



Walking on the Strings

NARRATION

As globalization accelerated due to the technology innovation, the world has turned itself into a melting pot with people from different backgrounds and race. Transients, who have lived in several different countries experiencing multiple cultures, are increasing dramatically and becoming the dominant group of people. It is glamorous to be recognized as transients cause you are expanding the view of the world, however, the recognition of belonging and home is one of the difficulties that transients face during their journey. The project aims to design a residence specifically for the increasing population of transients and provide them with a sense of belonging and solve their insecurity of rootlessness.

CONCEPT

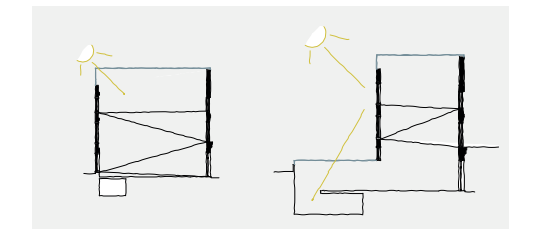
The targeted inhabitants of the residence are transients in creative fields. As an artists residence, the site-building provides artists with a space to live, to work, to showcase, and to form bonding with both community and inhabitants.

The project has blurred the line between private and public spaces which giving transient artists chances to communicate with people in the city and the building. Instead of closing themselves into a small room, opening and letting people know their stories rather help transients in their search for a home. The meaning of home for transients could be unconventional at the time, however as the "future citizens", designing homes for those who lack cultural identity might be one of the problems for us to solve.

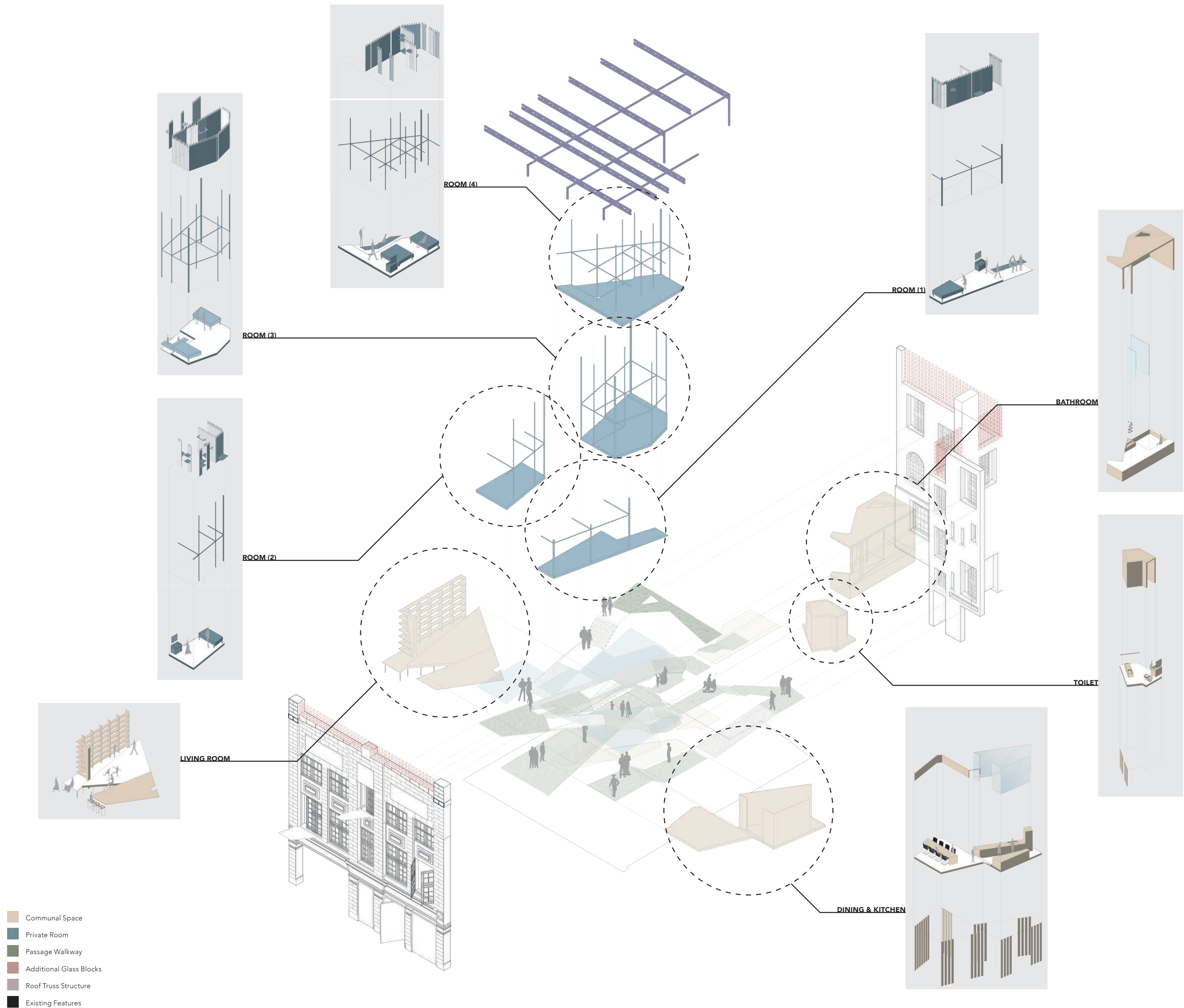
JOURNEY + SCATTER SPACES

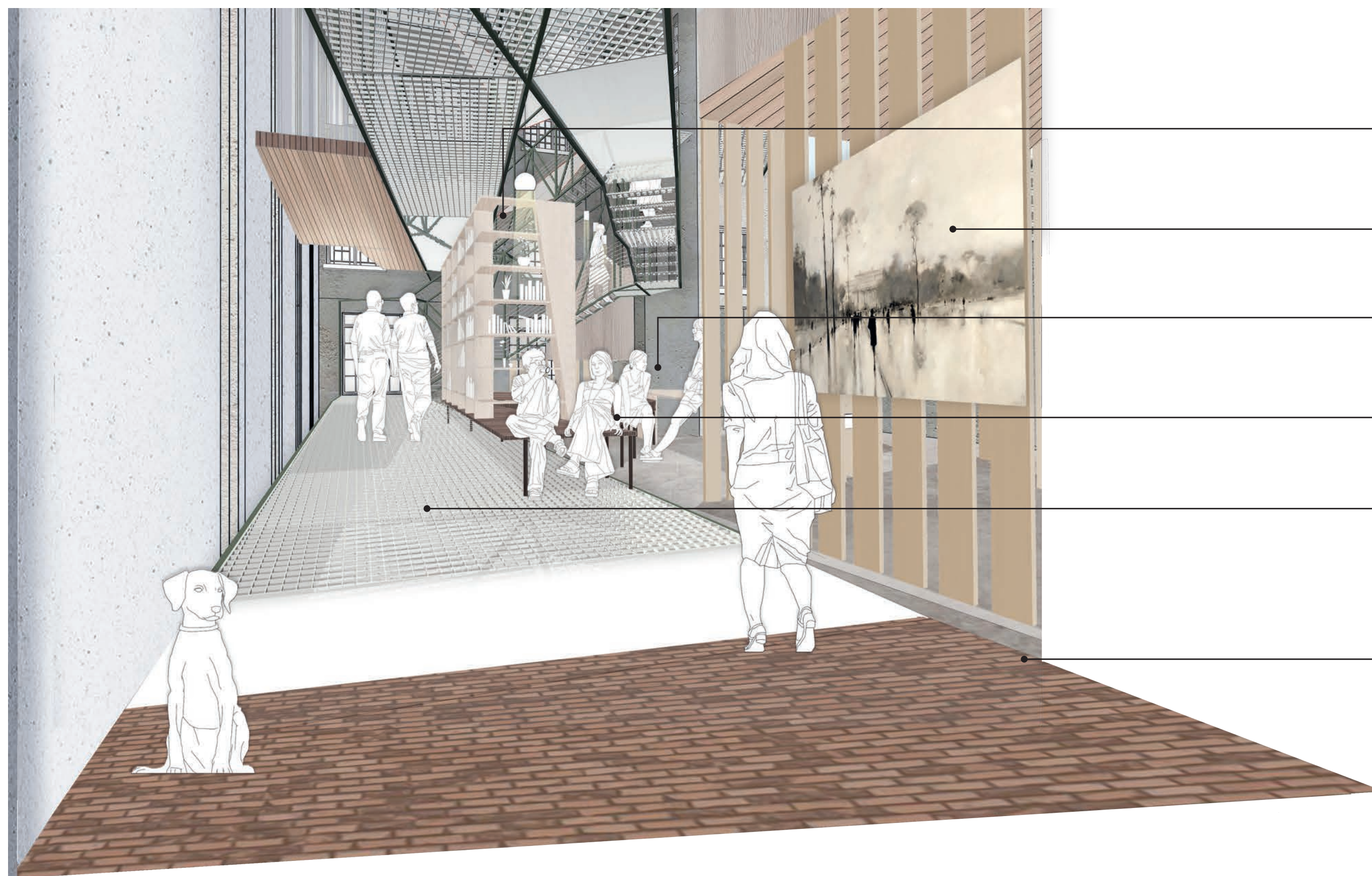
The site-building is designed to serve the purpose of both residence and gallery for transient artists. Instead of drawing a boundary in between the two purposes, the design blends the residential spaces into gallery space which remove the sense of publicity and privacy. The meaning of home as an interior aspect is challenged in this project by opening the personal life to the public and create communication spaces for inhabitants and community to bond their connections stronger in which give the sense of belonging to transients.

The design can be breaking up into several components. The main component is the passage walkway that portraits the journey that inhabitants have experienced as transients. The design of the passage walkway utilized the heights of the existing windows created by the skip floor scheme in which has connected the site-building in a one-way route that they exist leads toward the Smithfield Market. The visitors of the gallery will take their tour to the art gallery by walking on the passage walkway while the art created by the inhabitants are hung around the site building.



While the passage walkway served as the main component of the design, the residential spaces are scattered around the site building that is linked to the passage walkway. The scattered spaces can be detailed into two minor types: communal spaces and private rooms. Communal spaces are semi-public in which no fixed wall nor partitions are made. It opens the view for the visitors as well as accessibility so that it is welcomed for visitors to join inhabitants in a conversation in their residential spaces. The private rooms, on the other hand, has movable partitions that inhabitants have the right to switch the on/off scene. Once the partitions are taken away, the private rooms are exposed to the public that inhabitants use their personal spaces to exhibit their works while their private rooms as part of their representatives.



**BOOK GALLERY**

The book gallery on the ground floor is used both for gallery and residence which inhabitants bring the books from countries they've been to and share them with people who visit the gallery from the community.

ART DISPLAY

The arts are displayed around the site-building from different angles using the framework of the passage walkway and the structural pillars for communal spaces.

LIVING ROOM

The semi-public living room gives openness to space at the same time showing the life of the artists to the visitors. Inhabitants can also invite friends or guests and use this space as an open area for conversations.

BENCH

The bench designed with the slope difference from the passage walkway is for visitors to take a seat for reading books from the shelf and easily having a conversation with people in the living room.

PASSAGE WALKWAY

Passage walkway started from the entrance and continue being a one-way route until the bridge connecting to the Smithfield Market. It works as the core of the building by connecting all the residential spaces at the same time working as a public space for visitors to walk through and viewing the art pieces hanging between them.

ENTRANCE

The entrance of the site-building is open to the public which makes the passenger easy to access. It connects to the start of the passage walkway directly that start the journey for the visitors.

PUBLIC or PRIVATE

The boundary between public and private spaces of the design is nearly vague in terms of physical architectural features and functional purposes. Due to Covid-19, the home is more than just a living place that also needs to deal with working and leisure. The design does not follow the conventional thinking process of building divisions in spaces according to the function but to make the possible flexibility in changing the space functionality.

One of the characteristics of the design is that it gets rid of the floors and walls which makes the interior space as a whole. When there are no divisions in space vertically and horizontally, it is hard to distinguish the line between publicity and privacy. However, by using the materiality and the height differences on the platforms, people can still sense the differences in which is residential space and which is gallery space.

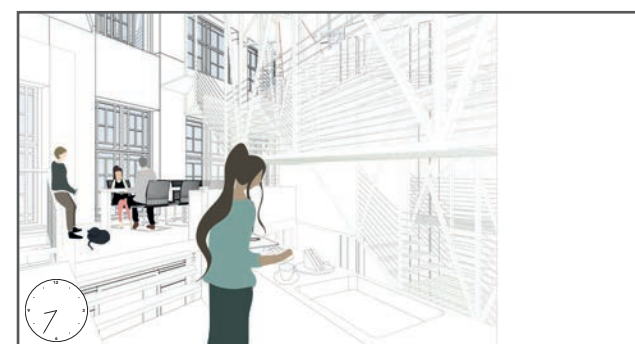
As the spaces are already hard to distinguish visually, the design makes the residential spaces harder to identify because of their flexibility in changing their appearance. The private rooms for example have the On/Off Partition which can switch itself from being an exhibition space to a private living space. The kitchen and dining area is used daily as the communication space for inhabitants with an extension by putting down the guard and connect the platform to the passage walkway to enlarge the space when needed. Through different detail designs in the project, the thoughts of a space serving multi-purposes are achievable. Space will not only become multi-functional but also be able to switch between being a public space and a private space.

The project takes a further decision in blending the public and private spaces with the aim of creating more conversations and communication between inhabitants and visitors which could provide a sense of belonging to the transients. Forming bonds with others is what makes a home to transients - it does not matter whether it is a public or private space.

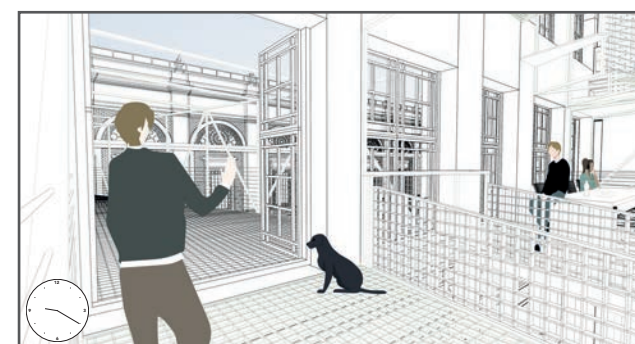
Visual from the entrance looking at the interior of the site-building



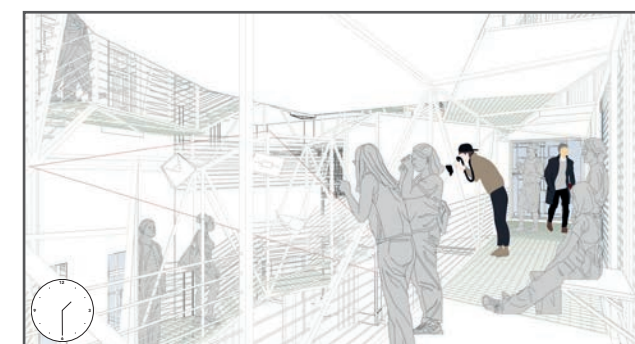
Walking up in the morning, Alfredo prepared himself ready for breakfast and work and set up his room switching from private use to exhibition use.



Alfredo had breakfast with the Lay family while his brother Adriano was still asleep. Livvy usually prepares the meal for other inhabitants if they woke up as early as the Lay family does.



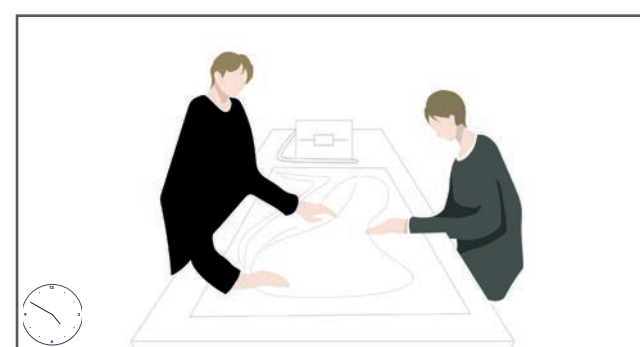
Alfredo was ready to work in the Perez Brother studio space in the Smithfield market from the bridge connected the site-building and the market. Anatoly always sees inhabitants off from the existing.



The exhibition was held during the daytime when Dimitry was taking photos as part of the records of the exhibition for the Perez Brother.



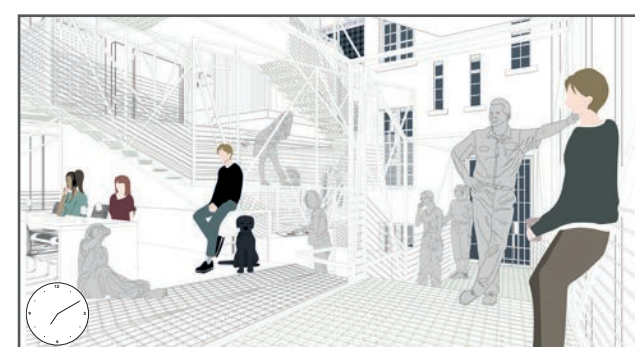
During the exhibition, Adriano got in touch with the visitors who were interested in their designs. To go into further conversation, Adriano welcomed them to the lounge space and shows more of their bag designs.



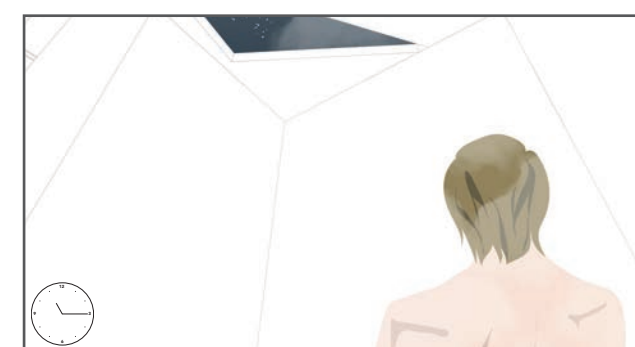
After talking with the visitors, Adriano had a meeting with Alfredo about their F/W 2021 collection in their studio at the Smithfield Market.



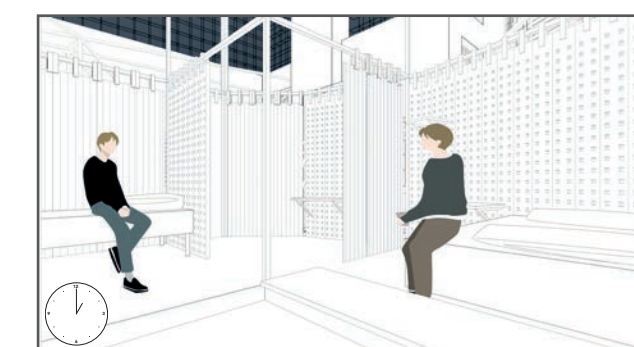
Adriano came back to the residence a bit earlier than Alfredo to close the exhibition, leaving Alfredo wrapped up their meeting and prepared for the bag patterns that would be used for the next meeting.



Adriano and Alfredo held an evening party for both inhabitants and some visitors of the community who support them during their exhibition. The dining area is extended to the passage walkway by putting the guard down.



After an exhausting day working at the studio, Alfredo finally got time to relax and took a break from others.



Before going to sleep, the Perez Brother always have a small conversation in their room talking about what happened during the day and their schedule for the next day.

A Day of Perez Brother storyboard

DWELLING or EXHIBITION

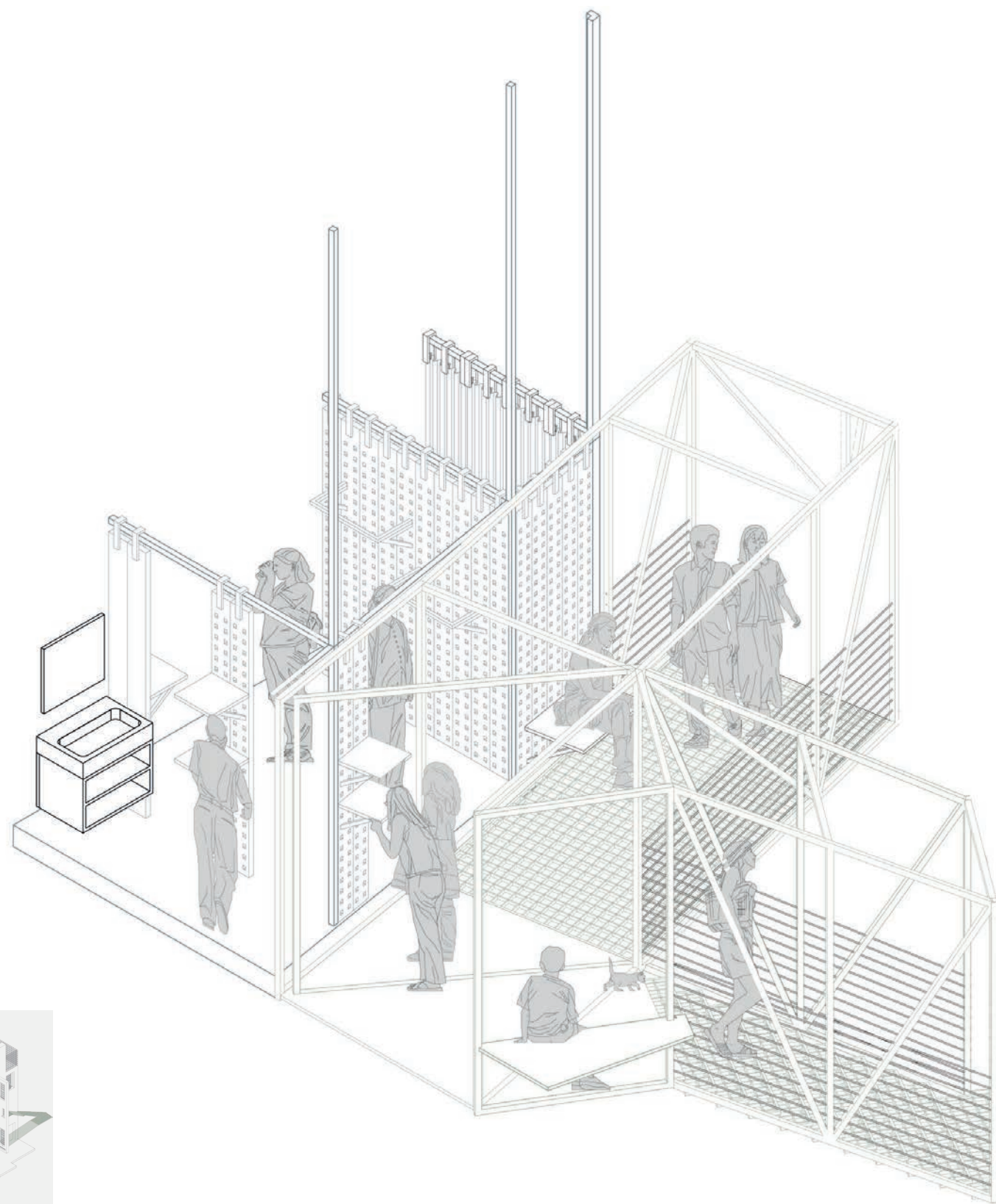
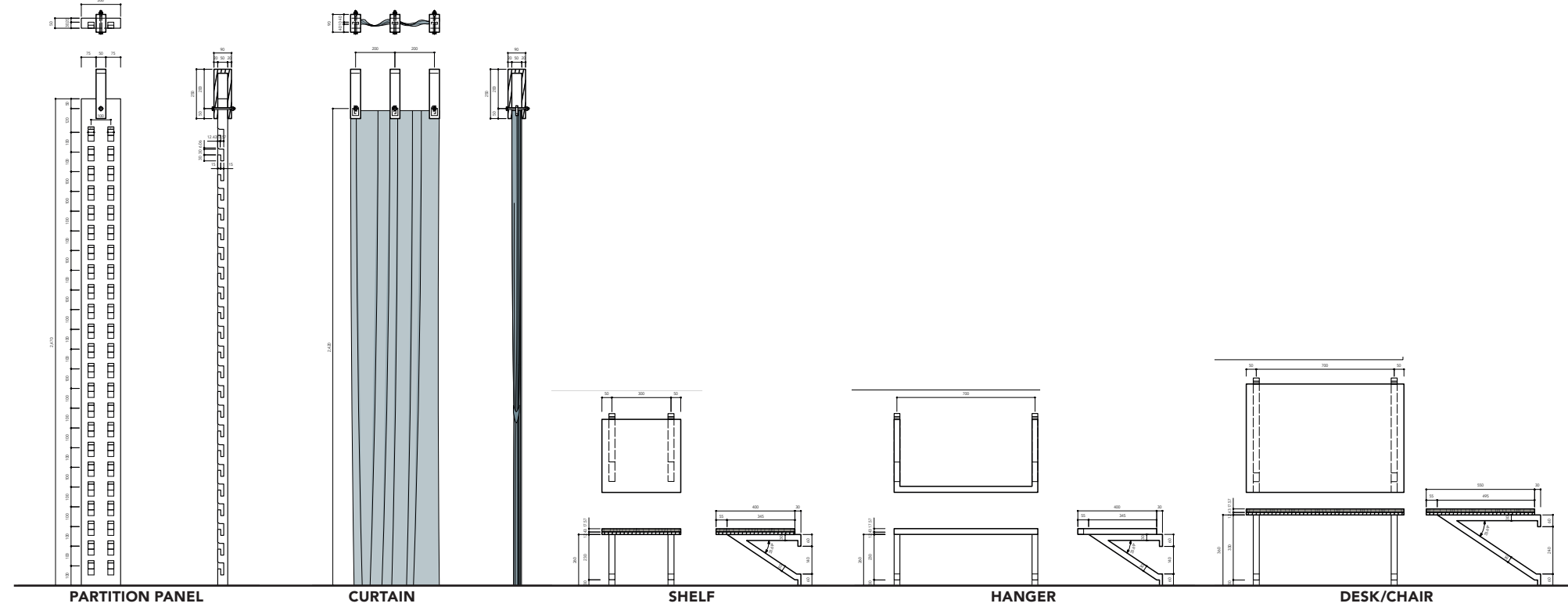
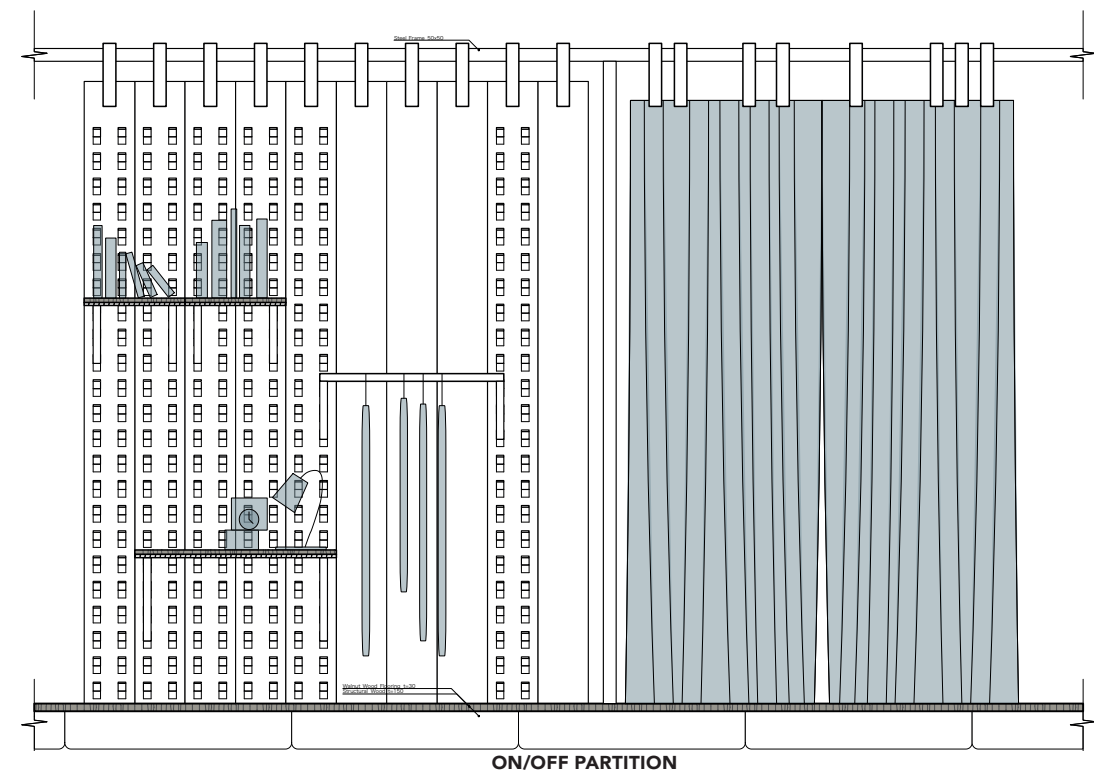
The residential and gallery spaces are designed inseparably by using the passage walkway connecting all the residential areas. It turns the site into a mixture of public and private spaces. However, within the interior, there is another essential element for the design which is the On/Off Scene for the exhibition space. It breaks the conventional idea of dwelling can only be used for living. The private rooms which is the residential space for inhabitants can switch their purpose depends on the time.

The private rooms do not have fixed wall nor ceiling. All it has is the platform and the framework hanging itself from the rooftop truss structure. The components of partition panel and curtain are used in the On/Off Scene by isolating itself from the passage walkway during the Off Scene at night to ensure the privacy use of inhabitant and dividing the platform into two spaces in which partially connecting itself with the passage walkway during the daytime. The freedom in changing the space according to the purposes breaks the boundaries between dwelling and exhibition. Considering the private room for the inhabitants is representing their personal life and characteristics, making the use of their private space to introducing the artworks that the inhabitants produced is a way of communicating their stories to the community.

The design of the On/Off Partition includes five components: the panel, the curtain, the shelf, the hanger, and the desk/chair in which both hard and soft division are considered. Three attachable components (shelf, hanger, desk/chair) could create an infinite combination with the panel to create the ideal dwelling or exhibition space. They provide the freedom in switching the display modes to living modes. The functionality is thoroughly considered during the design process.



The exhibition for Yuka's collection during daytime



DAY TIME DURING EXHIBITION



NIGHT TIME FOR PRIVATE USE

EVERYWHERE and NOWHERE

Whenever been asked "where is your home", the first thought out of transients' mind is always "everywhere and nowhere". As people who have been to different countries growing up under several cultures, they do not understand their cultural heritage which leads to a sense of rootlessness. There is not a fixed answer for them when it comes to the definition of home.

Walking on the Strings is representing the way that transients have felt during their journey. From mixing the public and private spaces to show their sense of carelessness to mixing the purposes of a single space to demonstrate their flexibility in changing environment.



The design uses lines as the central elements that represent the connection, the journey, the strings that pull everything together. From line to surface, from surface to volume, from volume to the physical sense of space, dimensionality becomes key to the design project that helps to push the boundaries between residential space and public space. For transients, a place to live does not necessarily mean a home. Home is where sharing the empathy of rootlessness with those who have similar experiences and feel connected as part of the group. The design is in a way embody the coordination of locations and connecting the dots as the representation of transients' experience. The embodiment of the experience is the passage walkway where visitors of the site would walk through the experience. Both art and residential spaces are "everywhere and nowhere" - the same as their impression of a home. However, they receive bonding with other inhabitants who feel the same way that make this place a "home" to transients.

