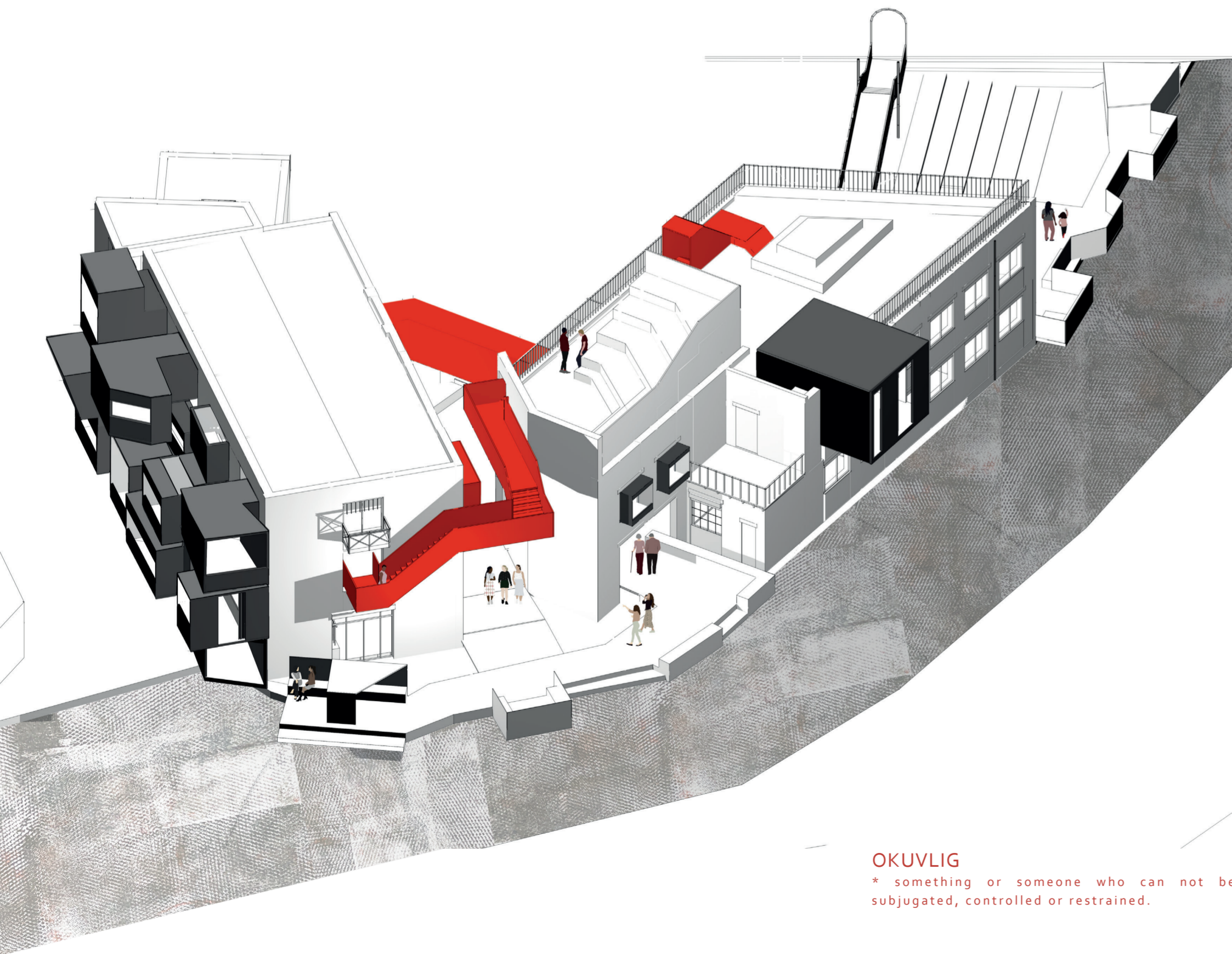


# OKUVLIG

A NARRATIVE SPACE TO  
PROCESS TRAUMA



## OKUVLIG

\* something or someone who can not be subjugated, controlled or restrained.

## THE AGENDA

The agenda for this project is to **give voice to the survivors of human rights violations**, to let them get a chance to shake society with their experiences, and to let the world know they are here. These survivors will get a safe **space to live and re-integrate with society**, a space that is inviting and warm and **encourages them to be bold and independent**. It gives them a chance to **claim recognition, to use their voice and force a reaction** from the society around them. It is a space for them to **heal by processing their trauma**.

The strategy used to reach the agenda is to create an open public space with moments of privacy that evidence the survivors experience.

## THE BRIEF

The theme is Waste. Waste is political. It is everywhere around us as discarded objects, food waste and litter, showing us visible traces of the consumer society. We as humans have a tendency to overlook this and ignore the waste created by us instead of taking responsibility for our consumer by-products. Here we have a chance to make a difference and take responsibility, and ask ourself – What can Design do?

The politics in waste is not only in the objects but in the inequalities the pattern of waste shines a light on. “The most polluted places on our planet are also where the poorest people live – this is no accident.” These polluted waste spaces are inhabited by communities without control of their environment, and the next question becomes, how can we address this inequality?

We were asked to Explore waste in conjunction with site analysis of the given area with the aim to develop a meaningful dialogue between the research and the context. This year’s sites are located along or close to the Camden Highline – a stretch of disused railway arches that cut across the borough between Camden Market and Kings Cross in North London.

## HUMANS AS WASTE

As the modern society grows waste grows with it in form of people. People in the modern world are viewed in the same way as waste. Those who do not contribute to the economical value of our society are not valued as equal. Only a selected few are truly indispensable in a consumer society, and even these people can eventually become waste. Not because these people are waste but because that how we as a society treats them. Most people might shy away from that statement, afraid to face the consequences of their own actions. **We do not mean to let people become waste, that is just the bi-product of our own development.**



# CONTEXT AND STRATEGY

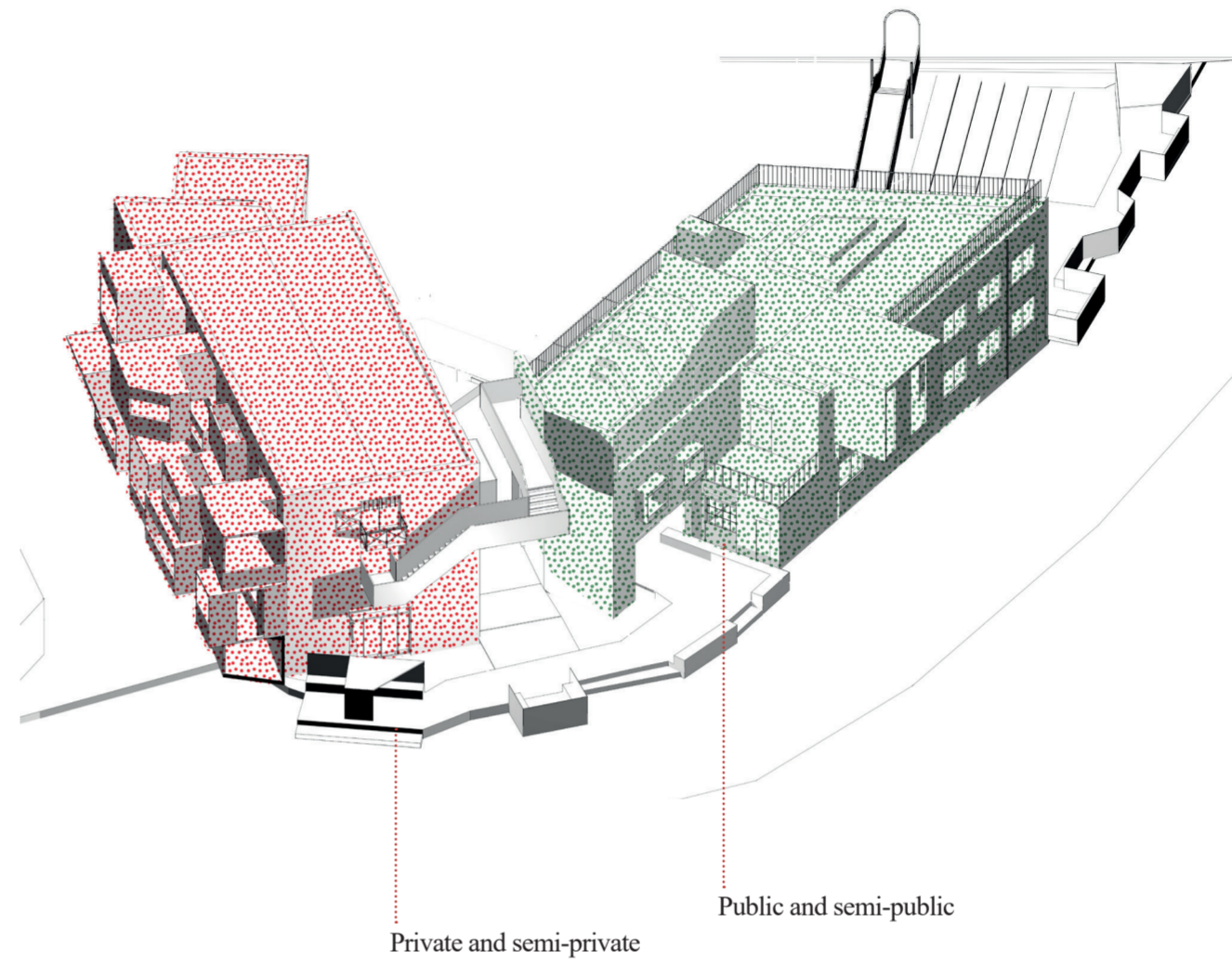
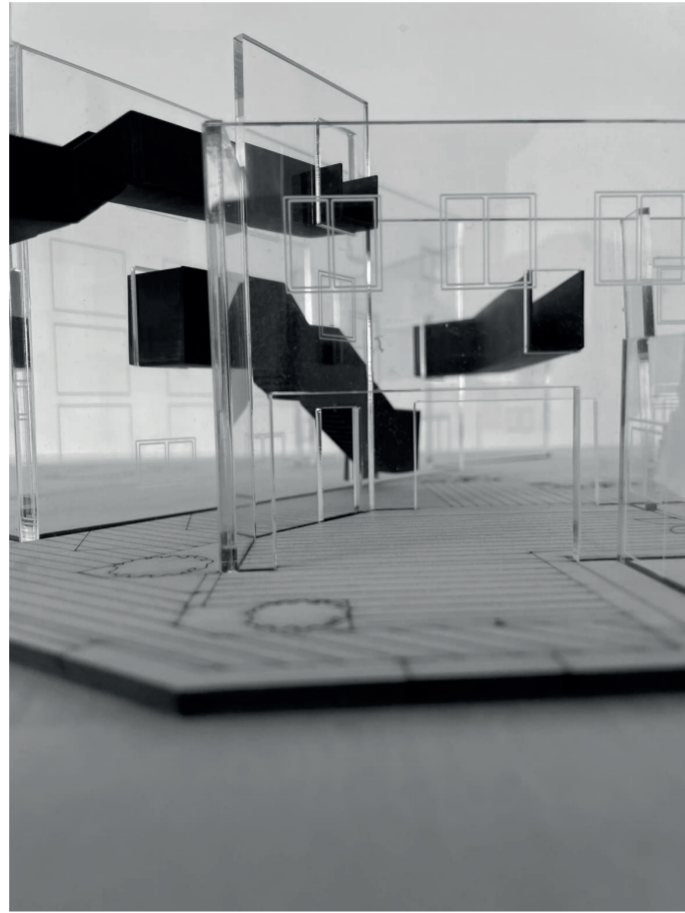
## THE SITE

The site is 146 Royal collage street, Camden. An old warehouse on the canal edge. The site consists of a series of connected buildings and have been added to and adopted in different stages. The two original warehouses have been given **different programs, one holding public activates and one private spaces.**

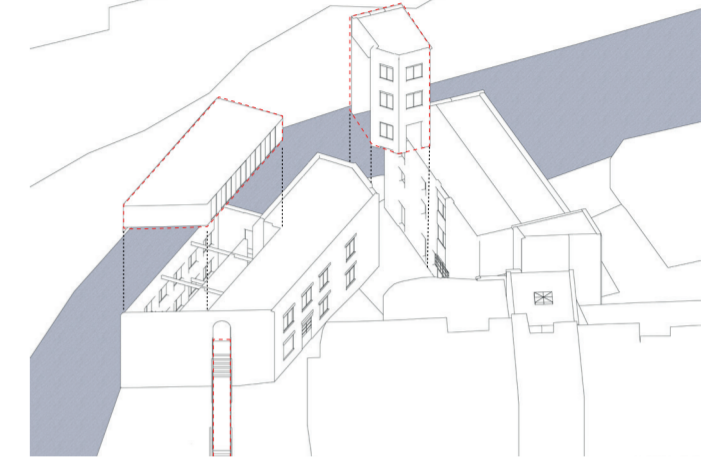
## THE CLIENT

**Helen Bamber foundation** - Human rights charity that gives survivors of human trafficking and torture the strength to move on. Work to ensure that survivors are free, healthy, safe, protected from re-victimisation, detention and poverty.

**Freedom from torture** - Charity supporting survivors of torture. The organisation also work with activist campaigns to stop torture and with supporting survivors to use their own voice to tell their story. These activist groups work with creative ways for the survivor to express their voices.



### 1. REVERSE



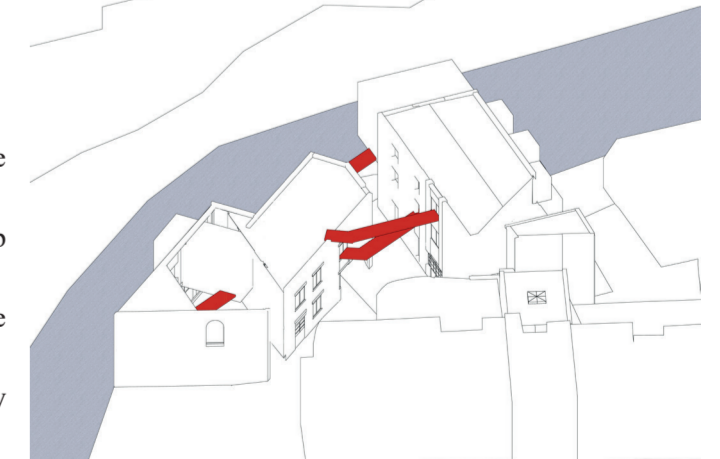
### 2. INVERT



### 3. INSERT

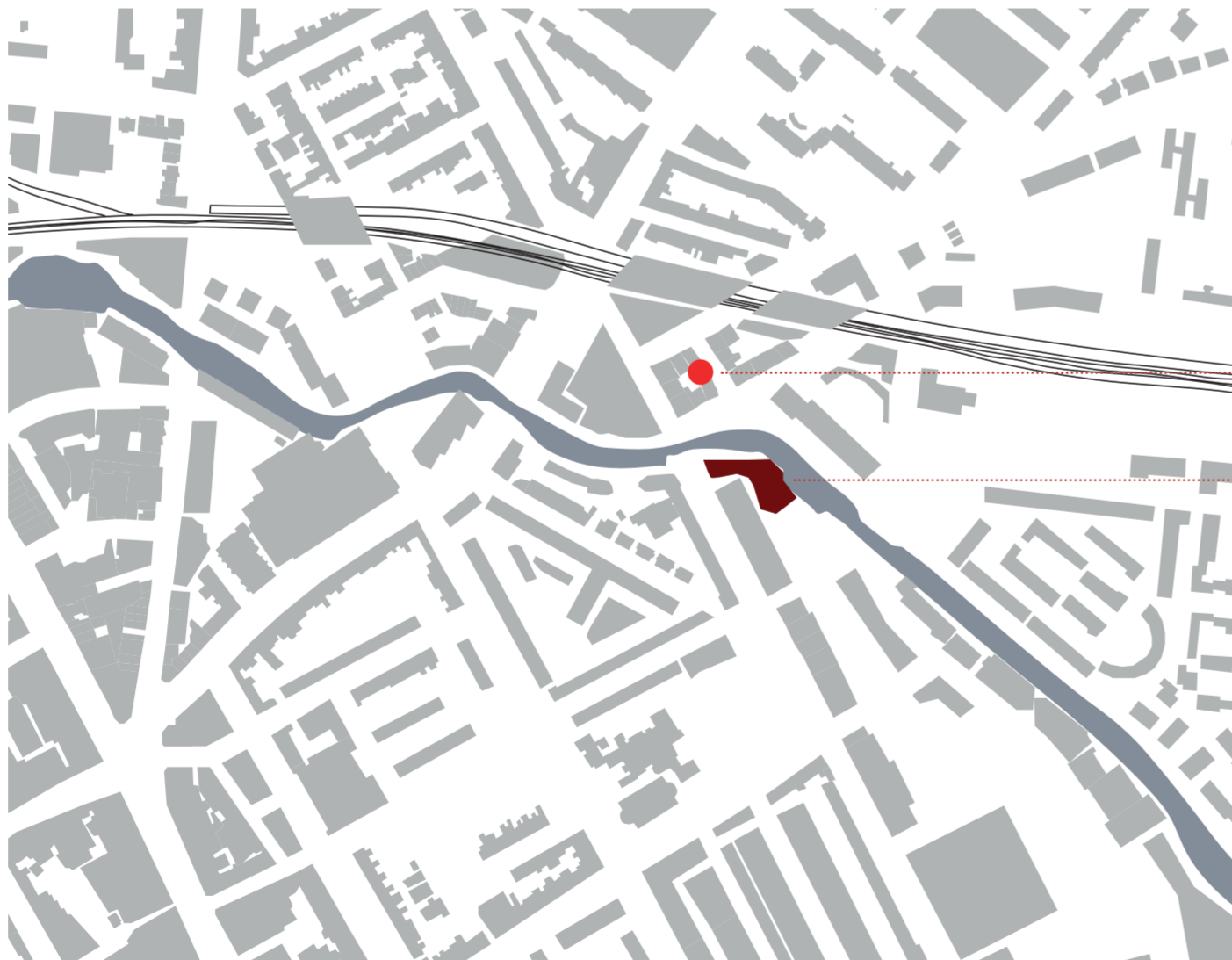


### 3. CONNECT



## THE STRATEGY

1. The previous adaptations to the buildings are removed. The building is reversed back to its original state.
2. Inverting the building to create exterior spaces and open up the building to the public.
3. Inserting new spaces for the survivors to inhabit that become interior spaces on the threshold to the exterior.
4. New circulation that challenge social interaction by connecting shared spaces.



Helen Bamber foundation

The site - 146 Royal collage street





# CREATING CONNECTIONS

The site is shared between the public and the residents with changing levels of privacy through the building. A new circulation space connects the spaces and leads the survivors and the public to shared spaces to invite chance interactions.

## PUBLIC

The public is invited into the building through a new circulation route through the building leading them to the café on the ground floor where the residents work or to the rooftop and roof cinema.

## SEMI-PUBLIC

The residents create fanzines and posters to tell their stories to the public. The workshop spaces are open for the public to view from the circulation route but only inhabited by the residents.

## SEMI-PRIVATE

The residents share living spaces and create connections within their own survival community.

## PRIVATE

Each resident or family have a private space of their own to inhabit. A safe space to enclose themselves in.

PUBLIC

SEMI - PUBLIC

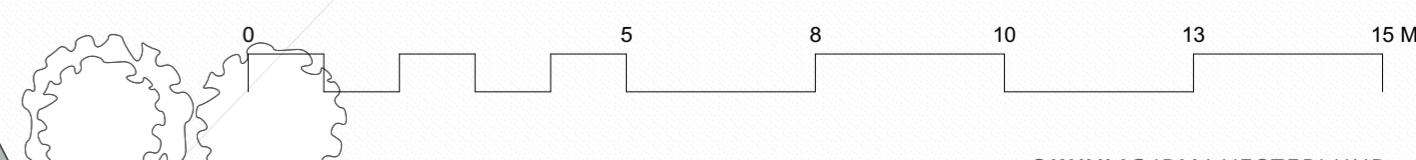
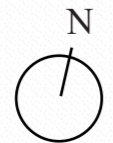
SEMI - PRIVATE

PRIVATE



FIRST FLOOR  
1:100

- 1. living room
- 2. library
- 3. bedrooms
- 4. WC
- 5. showers
- 6. fanzine workshop
- 7. Print making workshop
- 8. WC
- 9. circulation to rooftop

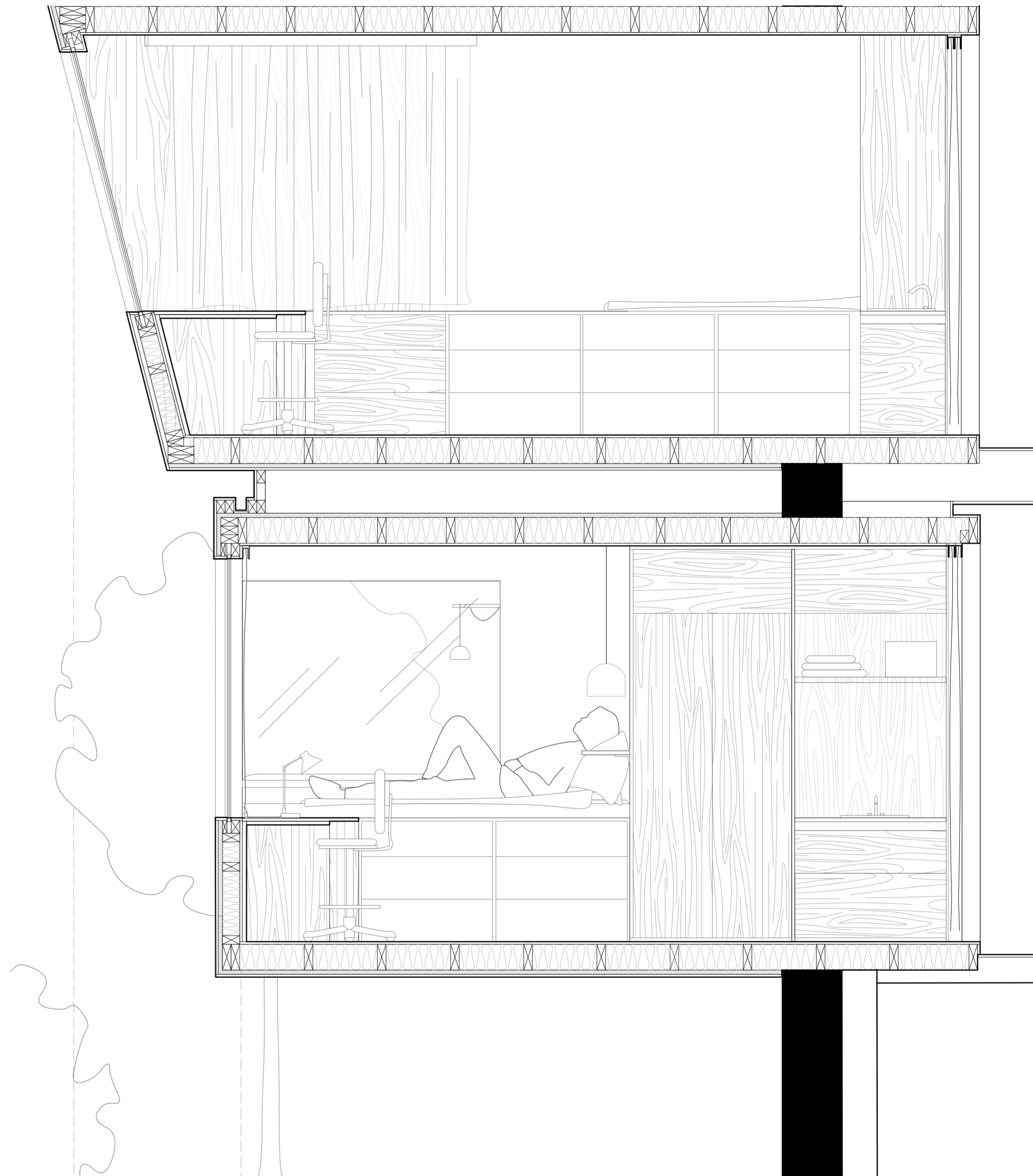
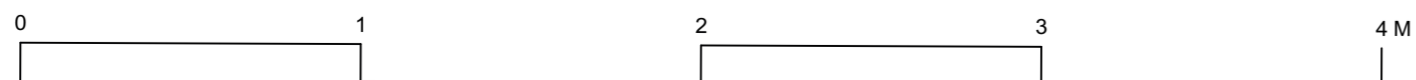
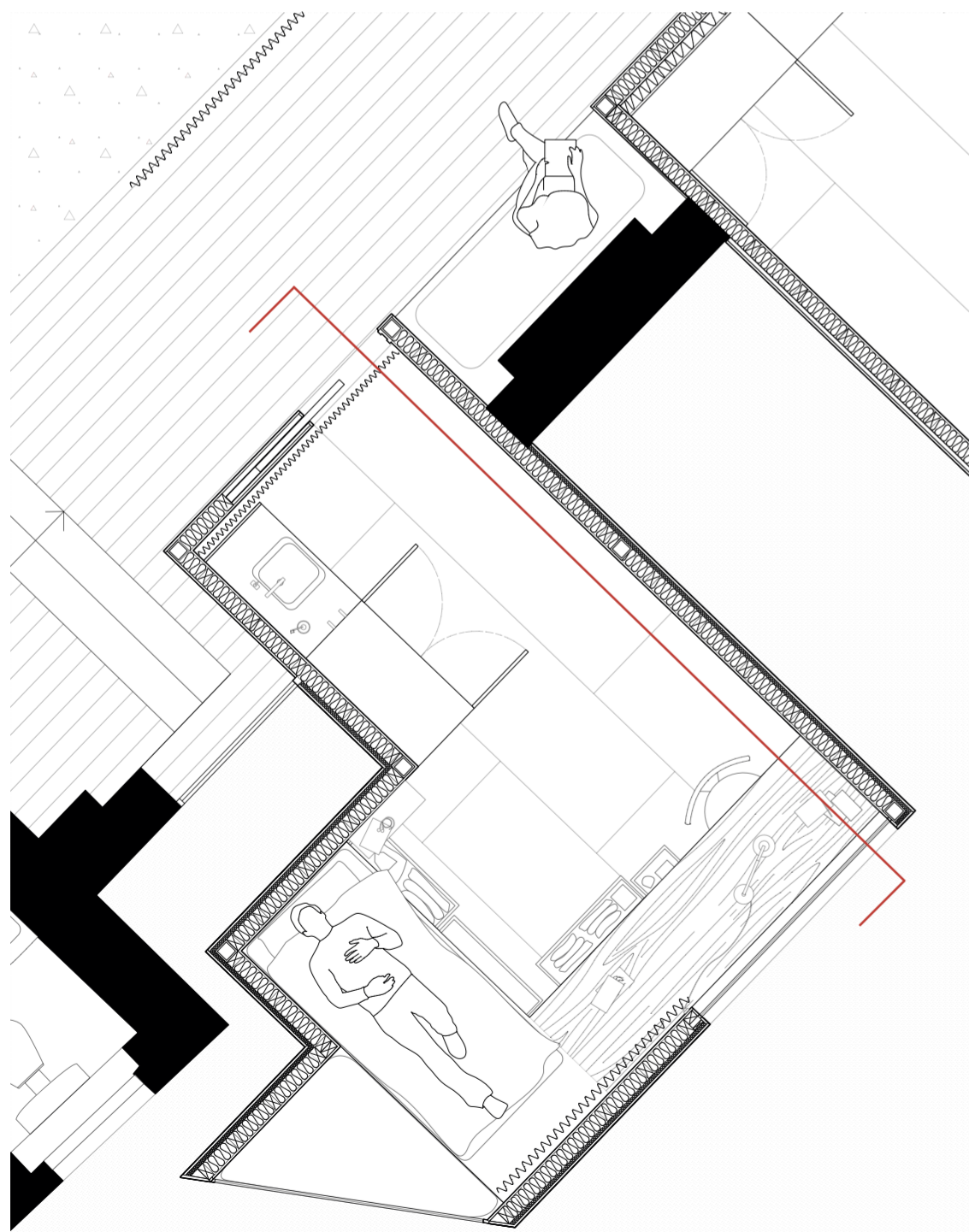




# INHABITING THE THRESHOLD

The survivors each have a private space to retrieve to, away from the shared spaces. These private spaces hold the bedrooms of single inhabitants or space for a small family. The place the inhabitants on the threshold to the public space, making the private spaces a part of the exterior. Each bedroom extrudes from the building, facing a back garden, resting on the edge.

The structure is given from a steel frame that rest on the structure of the existing building. A recess between the boxes gives the illusion of them being separated, being their own individual elements.





# A SPACE OF THEIR OWN

Each of the bedrooms are individual in their form, reflecting and making visible the individuality of the people that inhabit them. They open up to the shared internal space and allow layers of control for the inhabitants privacy.

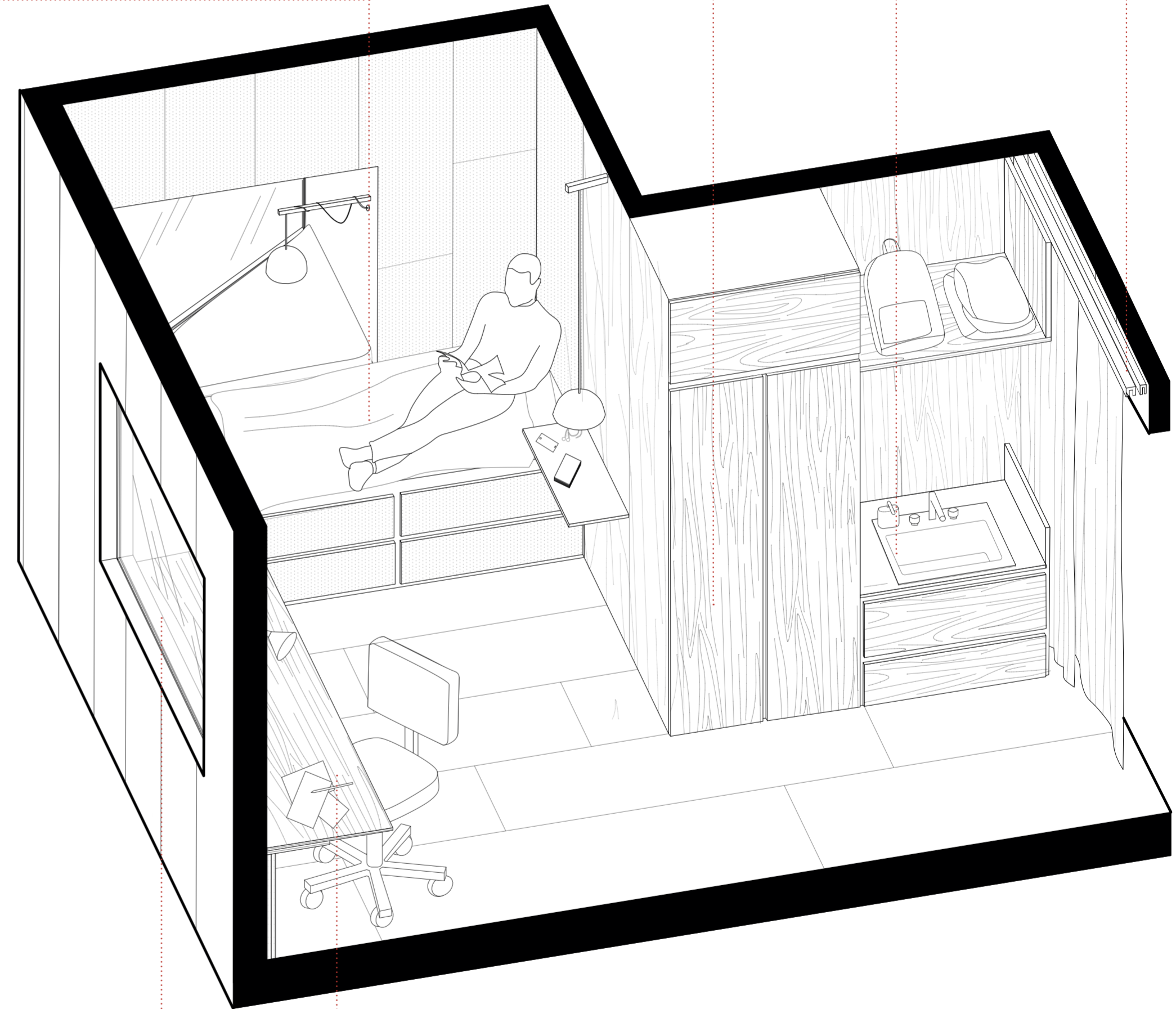
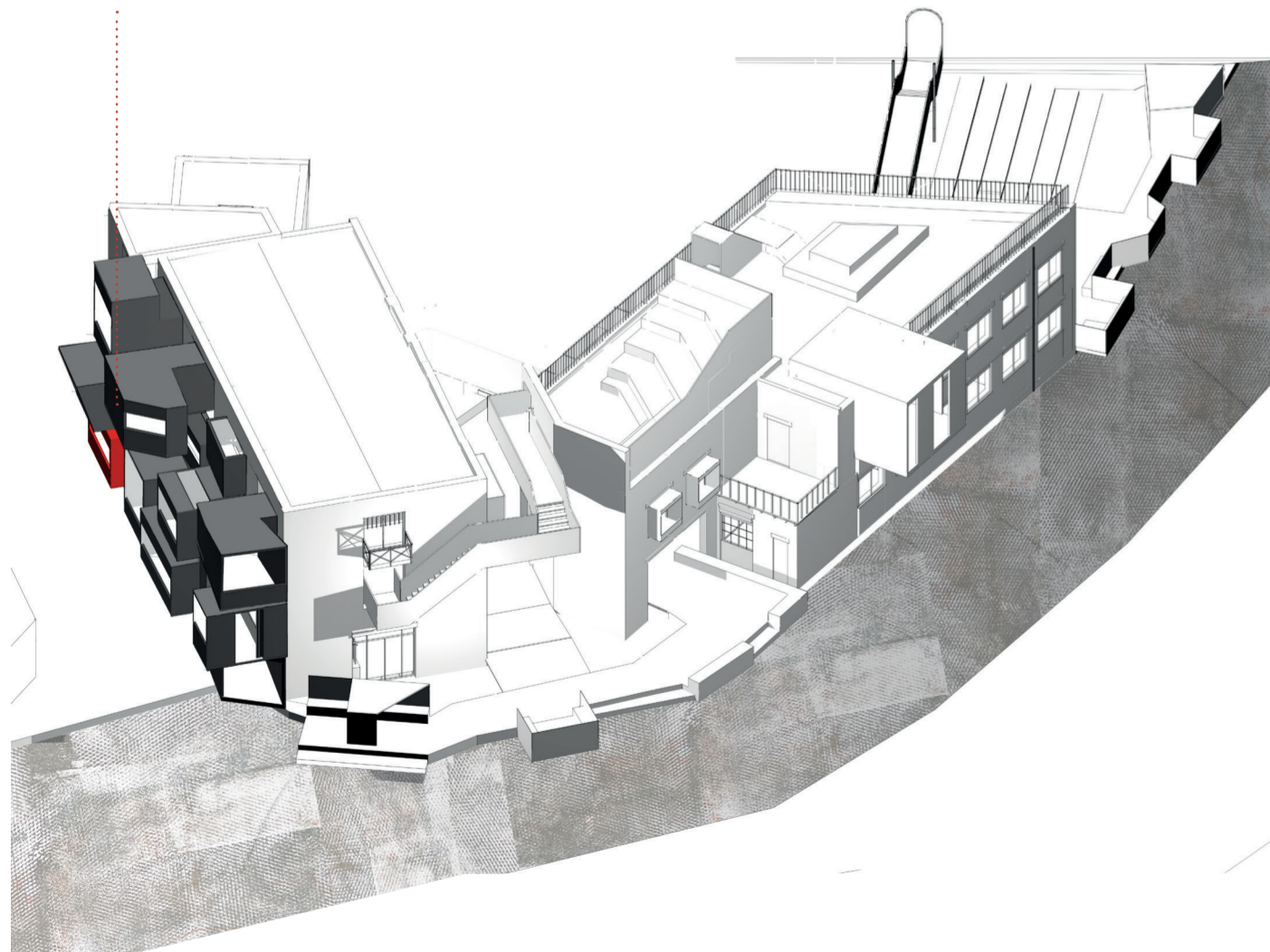
The resident controls the level of privacy in their own space through sliding partitions. The sliding door can be left open to create a connection to the social corridor outside through the curtains that can enclose the space.

Each bedroom is fitted with a vanity space.

The finishes of the interior are neutral allowing each new user to make the space their own and then leave a clean surface for the next inhabitant.

The focus on the space is to create a space of rest, a private refuge.

Bedroom 1



Each bedroom overlooks a back garden, bringing the inhabitants closer to nature.

The space is fitted with a bespoke desk space, inviting the inhabitant to create and make use of the space.