

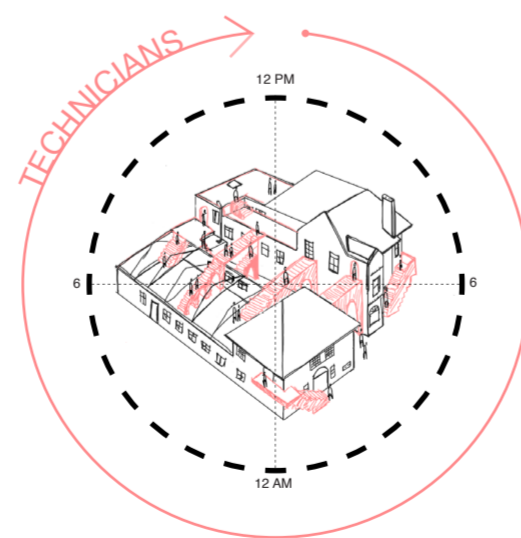
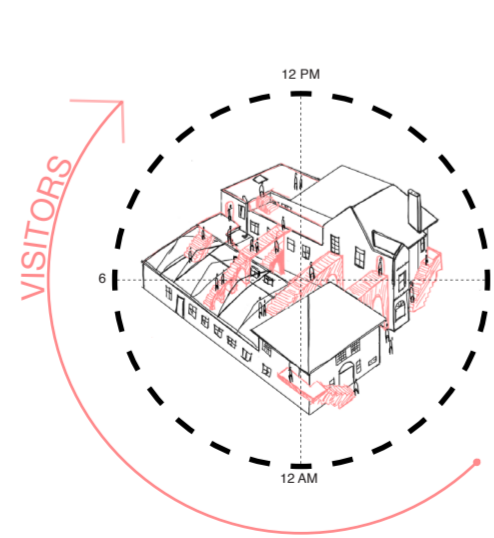
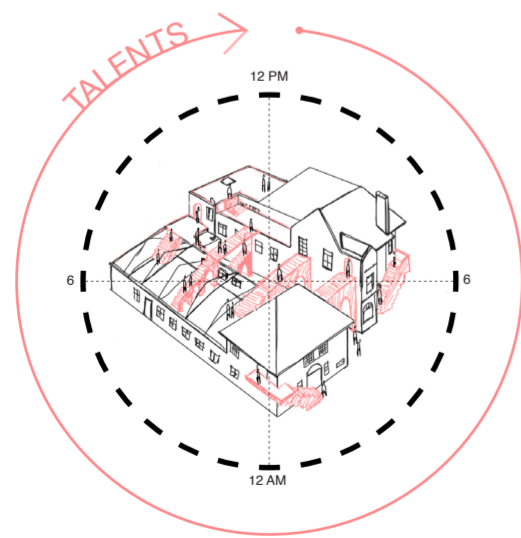
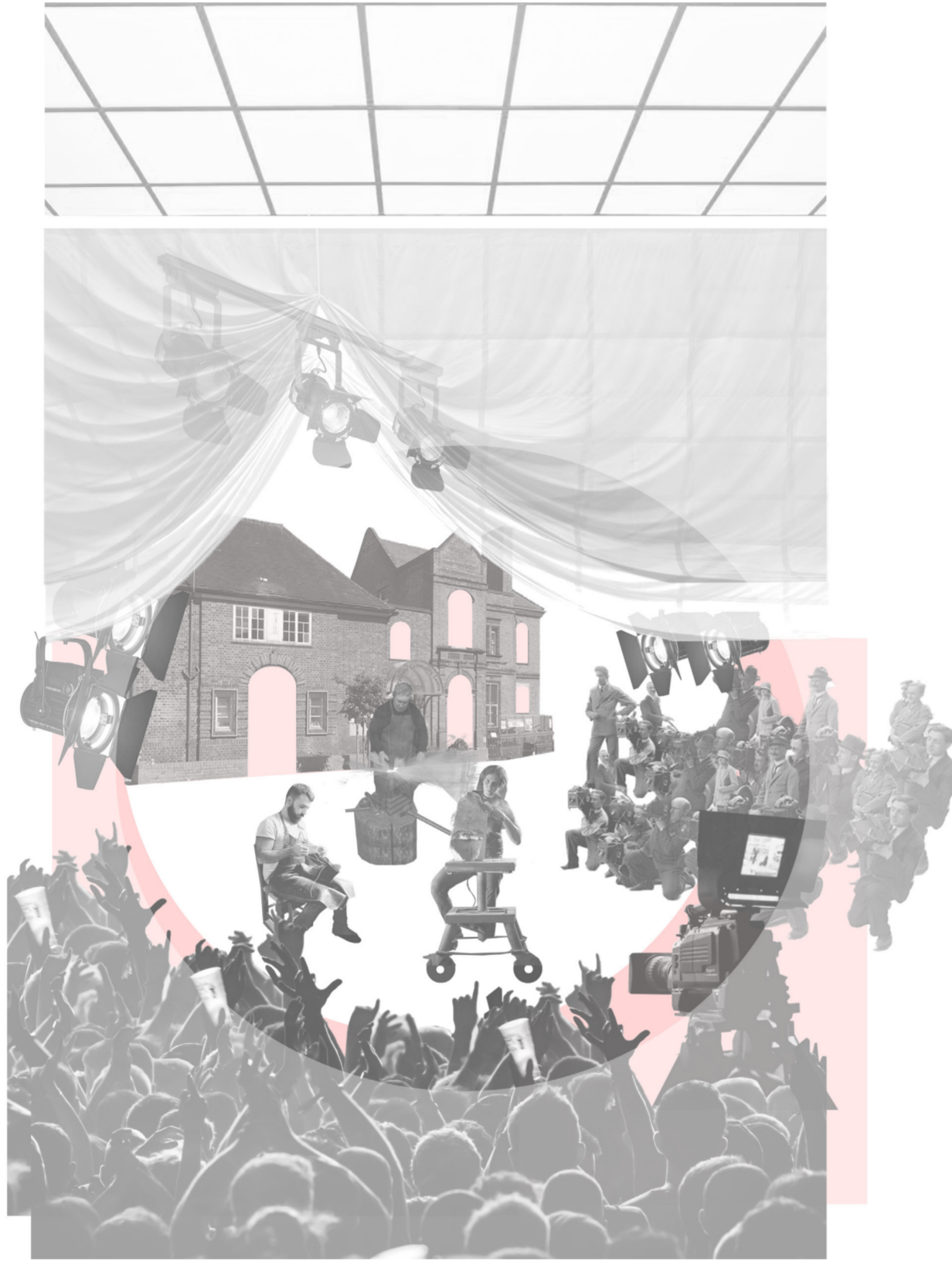
**MECENATE**  
noun

/me-ce-nà-te/

patron [noun] a person who supports (often with money) an artist, musician, writer, form of art etc

**MECENATE HOUSE**

The Community Centre will host an ongoing local 'Talent in Residence' show of what's happening inside the Mecenate House, where the participants will be selected by the community amongst local entrepreneurs, and will have the opportunity to develop their ideas/business and showcase their talent via livestream channels visible to the Kilburn. The participants of the Mecenate House, the building itself and every person that supports the community centre are the stars of the show.



**MECENATE HOUSE**

**VISITORS**

everyone is welcome, members of the Kilburn community as well as other visitors

- access to specific areas
- observe the activities in the House
- can create content
- dedicated workshop spaces
- direct and indirect contact/interaction with the talents

- circulation through dedicated corridors and passages
- view points to observe activities of the Reality Show
- dedicated spots for indirect interaction with the Talents
- dedicated spots to observe the Technicians

The building is Unlocked to the Visitors so that they can explore, observe and experience the Talent Show when in action and not. All level of the building are explorable; there are spots where they can see but not be seen and others where they can watch the Talents and be seen by them. They can't have direct contact with the Technicians but some of the filming and production areas are visible from the outside. They can also be filmed by the Technicians during the course of their visit, engaging with the Talents or just observing, making the Visitors an extra Character of the Show.

**TALENTS**

local entrepreneurs living and working within the Talent House, all participating in the Talent Show

- 24/7 use of the space
- living & working in the House
- interaction between Talents
- sharing communal spaces
- indirect contact/interaction with the visitors
- display their products and artwork
- being filmed 24/7

- individual workshops/living spaces
- communal spaces (kitchen, bathroom, workshop)
- exhibition space
- workshops area where they offer classes to the community
- confession room

The Talents are selected or suggested by the Community. The professions chosen for the Talent House are: TAILOR, COBBLER, MUSICAL INSTRUMENT MAKER, BLACKSMITH, JOINER, STONEMASON. The Talents live and work inside the Talent House and are filmed 24/7 by Technicians and Visitors, but they can come and go as they need. They can utilize any part of the House as a part of their inspirational and making process. The Talents can have direct contact with The Visitors and they can exchange ideas and inspirations. The Reality lasts for 3 months and when finished they have the opportunity to launch and showcase their business in a pop-up shop on the high road.

**TV TECHNICIANS**

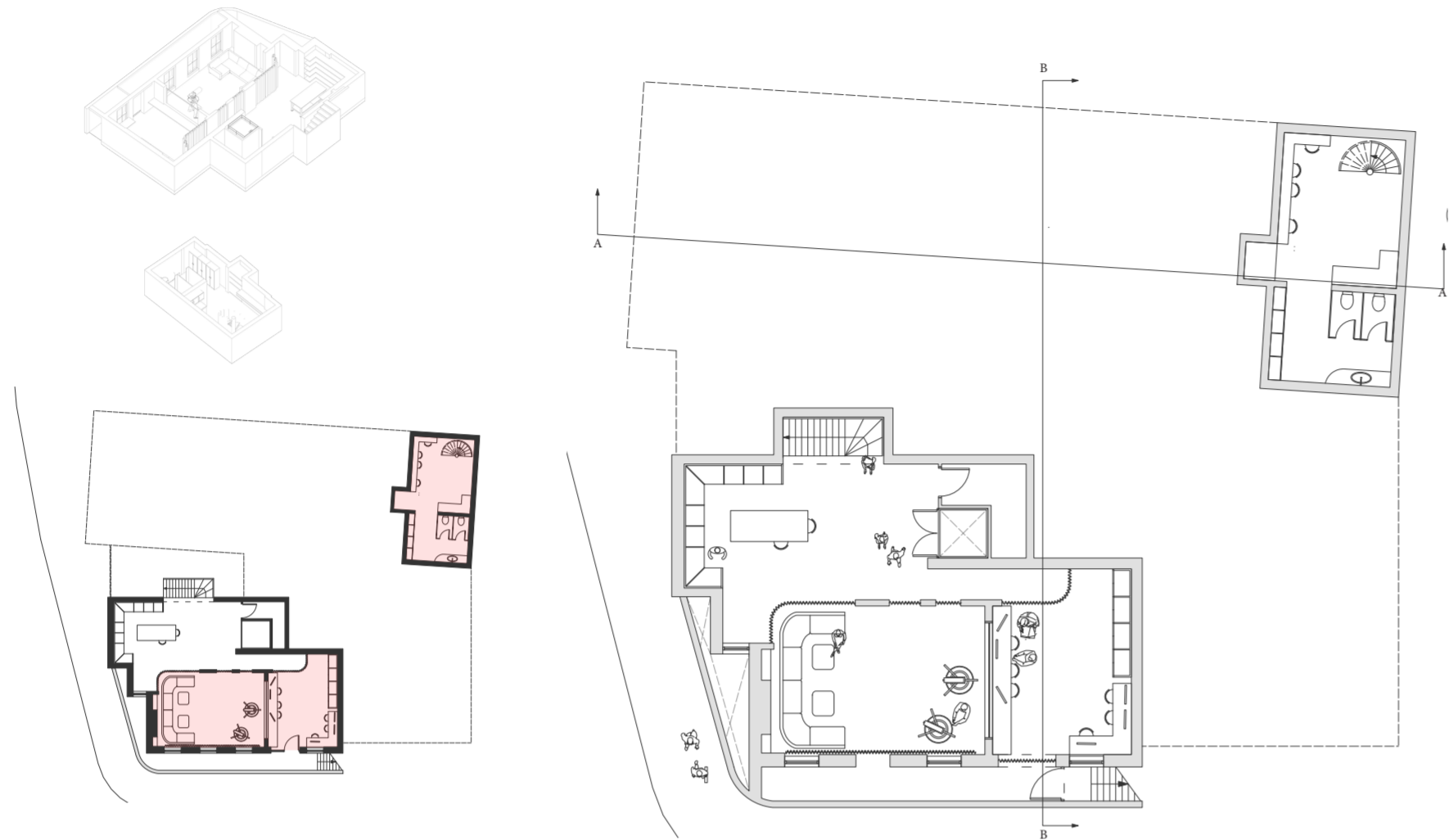
staff working behind the scenes, filming, recording and creating content for the reality show

- 24/7 access to specific areas
- filming and producing content
- no contact/interaction with the visitors and Talents
- hidden from the Talents but visible to the visitors

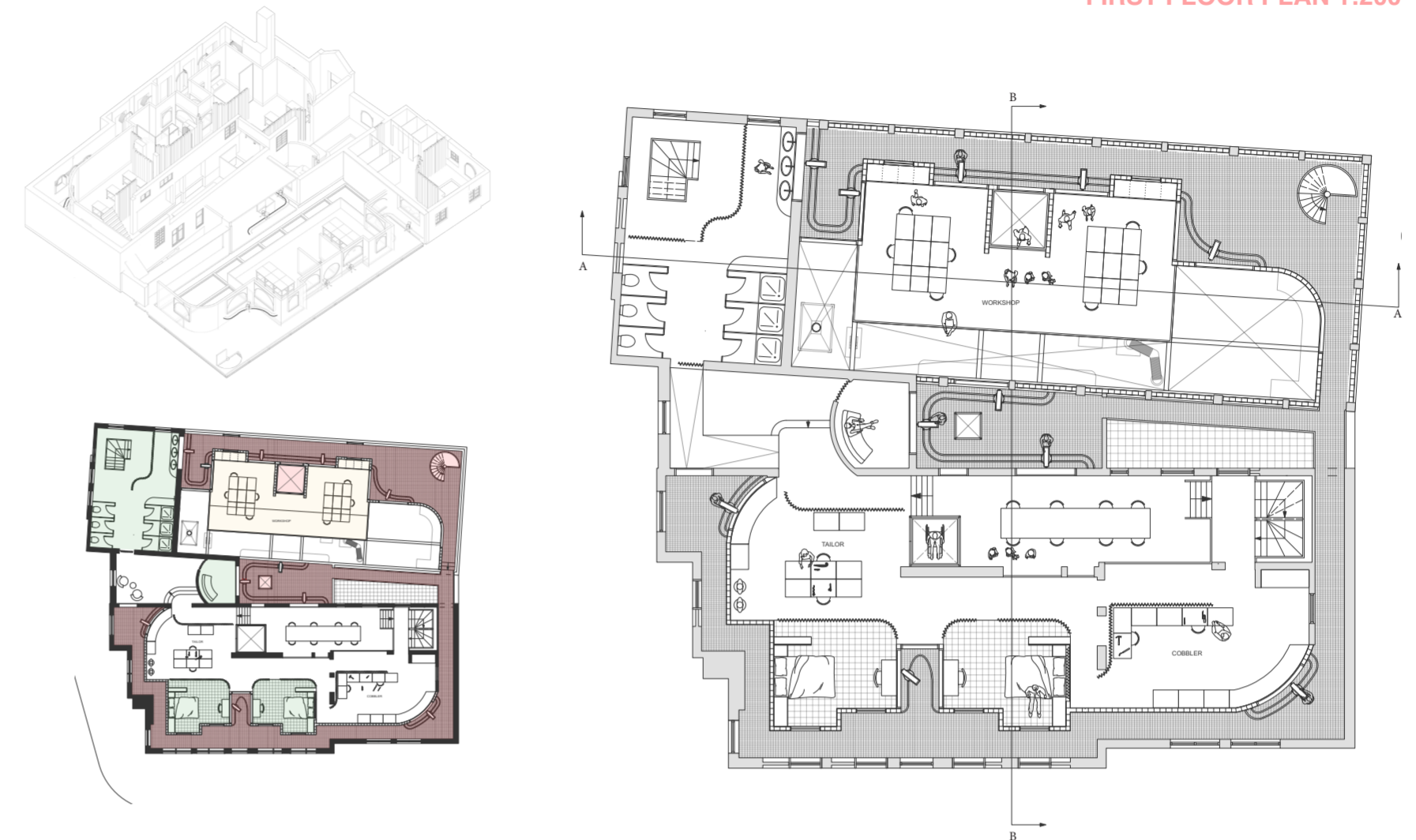
- circulation through the building and secret passages
- filming rooms
- production rooms
- staff welfare rooms

The Technicians are present 24/7. They observe, film and produce the content of the Show that goes on live-streaming via a Kilburn Community TV Channel. They don't share the space with anyone but watching and filming the Talents throughout the building.

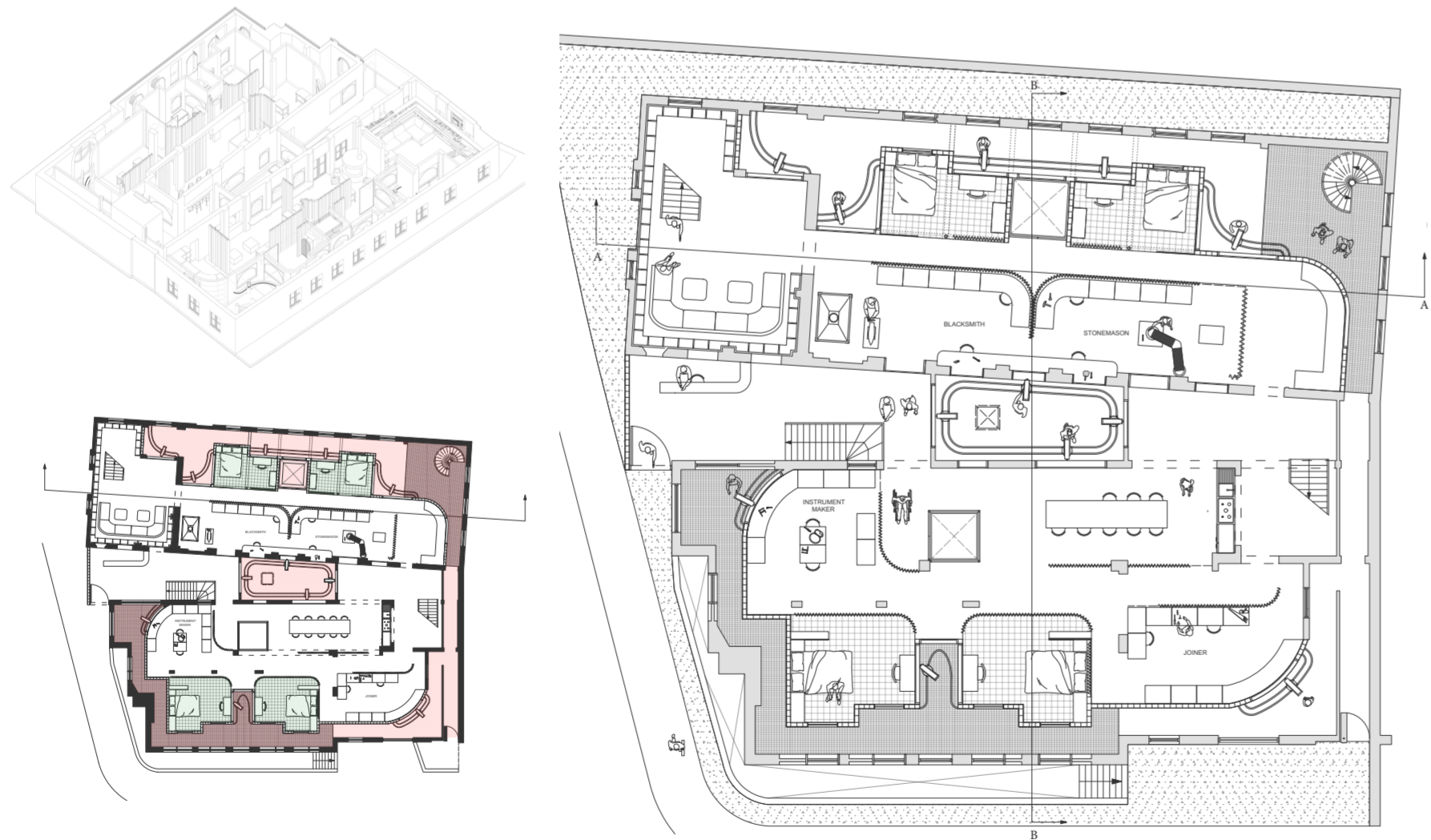
BASEMENT PLAN 1:200



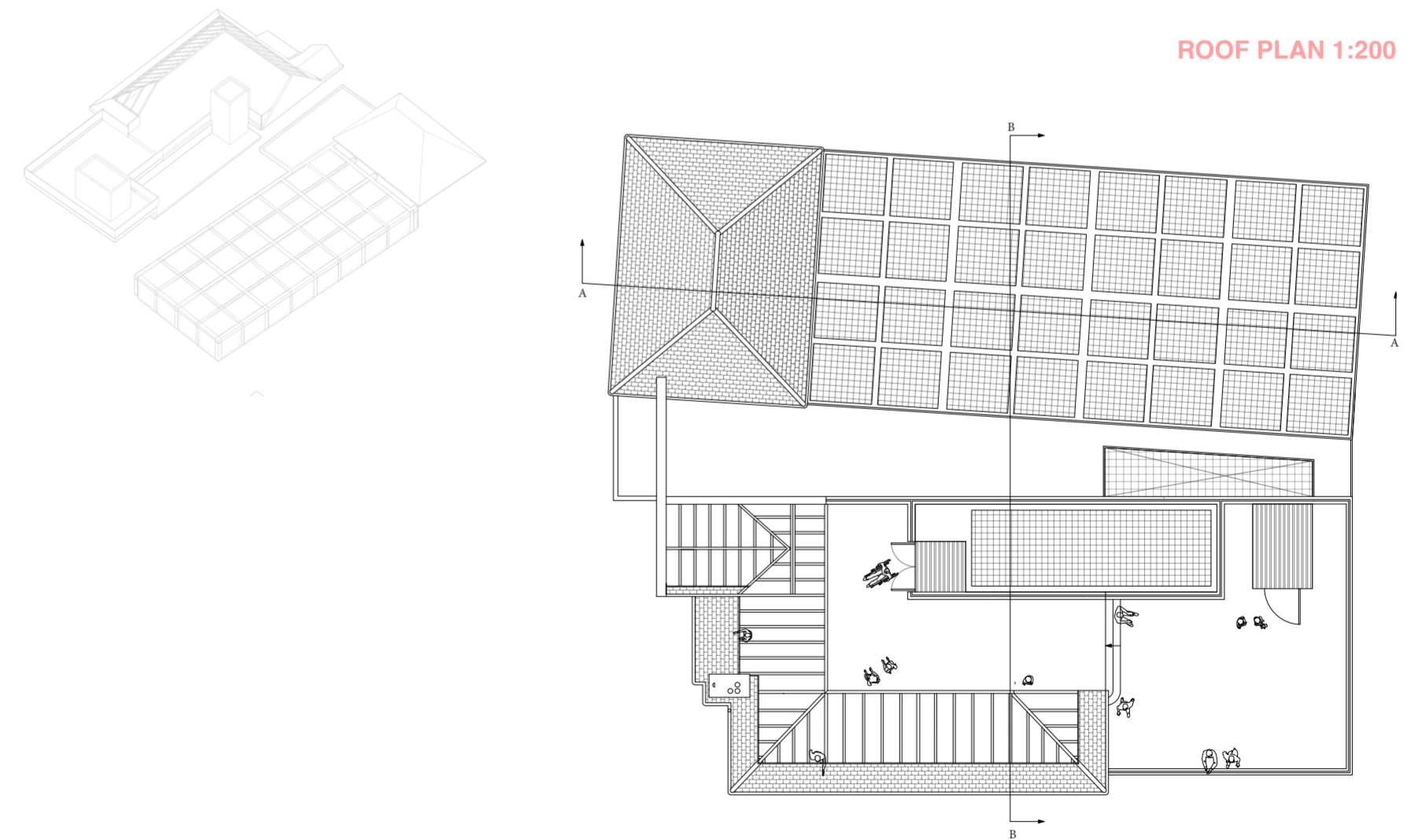
FIRST FLOOR PLAN 1:200



GROUND FLOOR PLAN 1:200

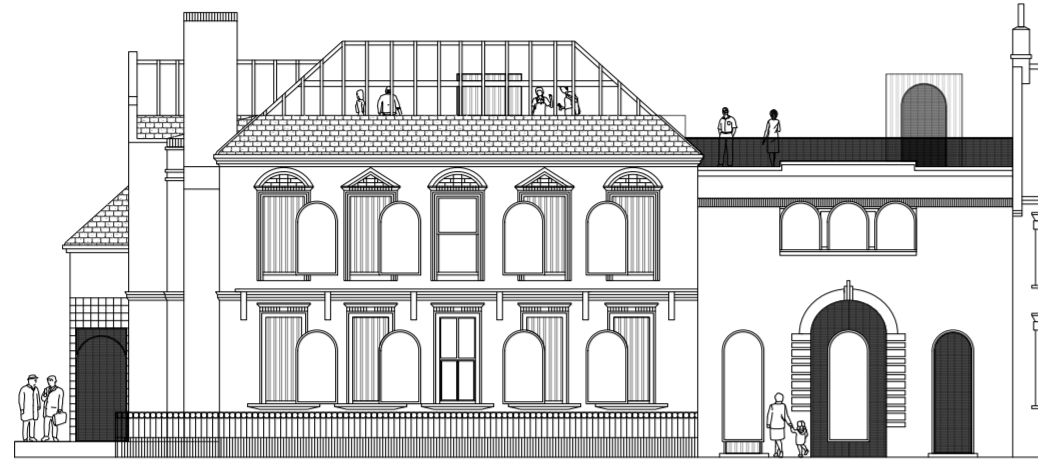


ROOF PLAN 1:200

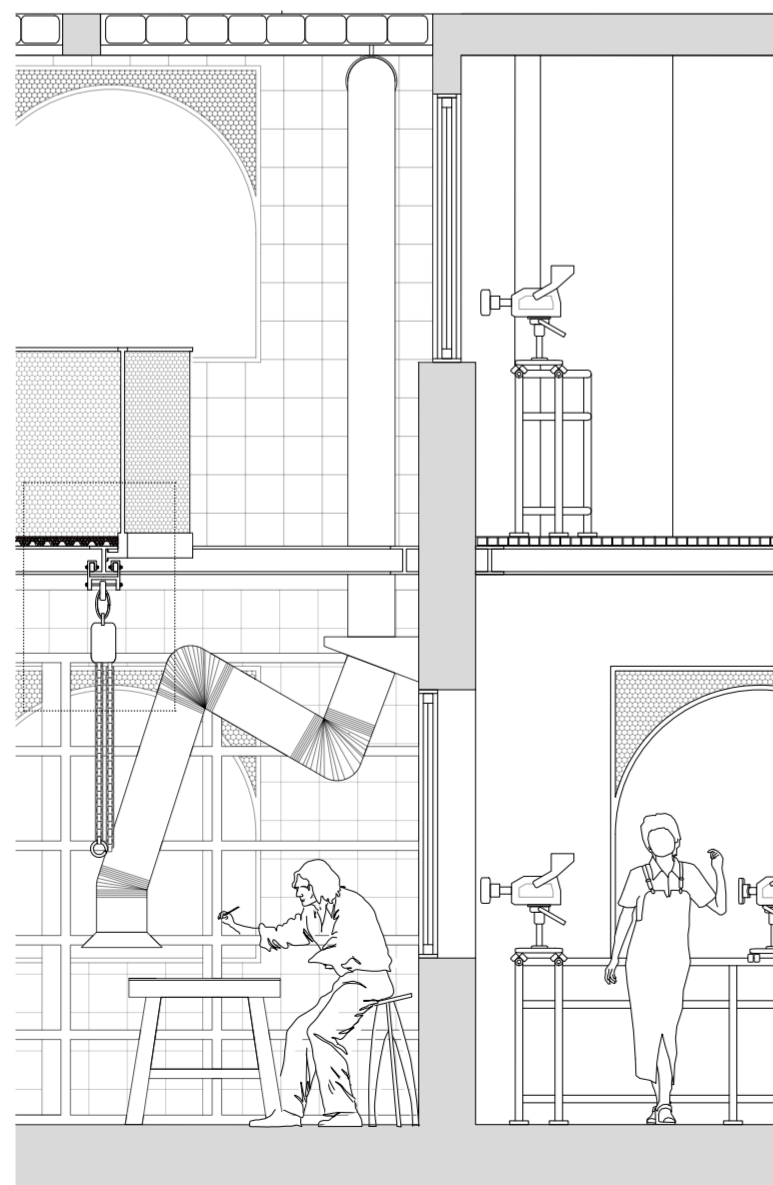


- Areas accessible to Visitors and Talents
- Semi-private living spaces for the Talents only
- Pathways and filming spaces for the Technicians only

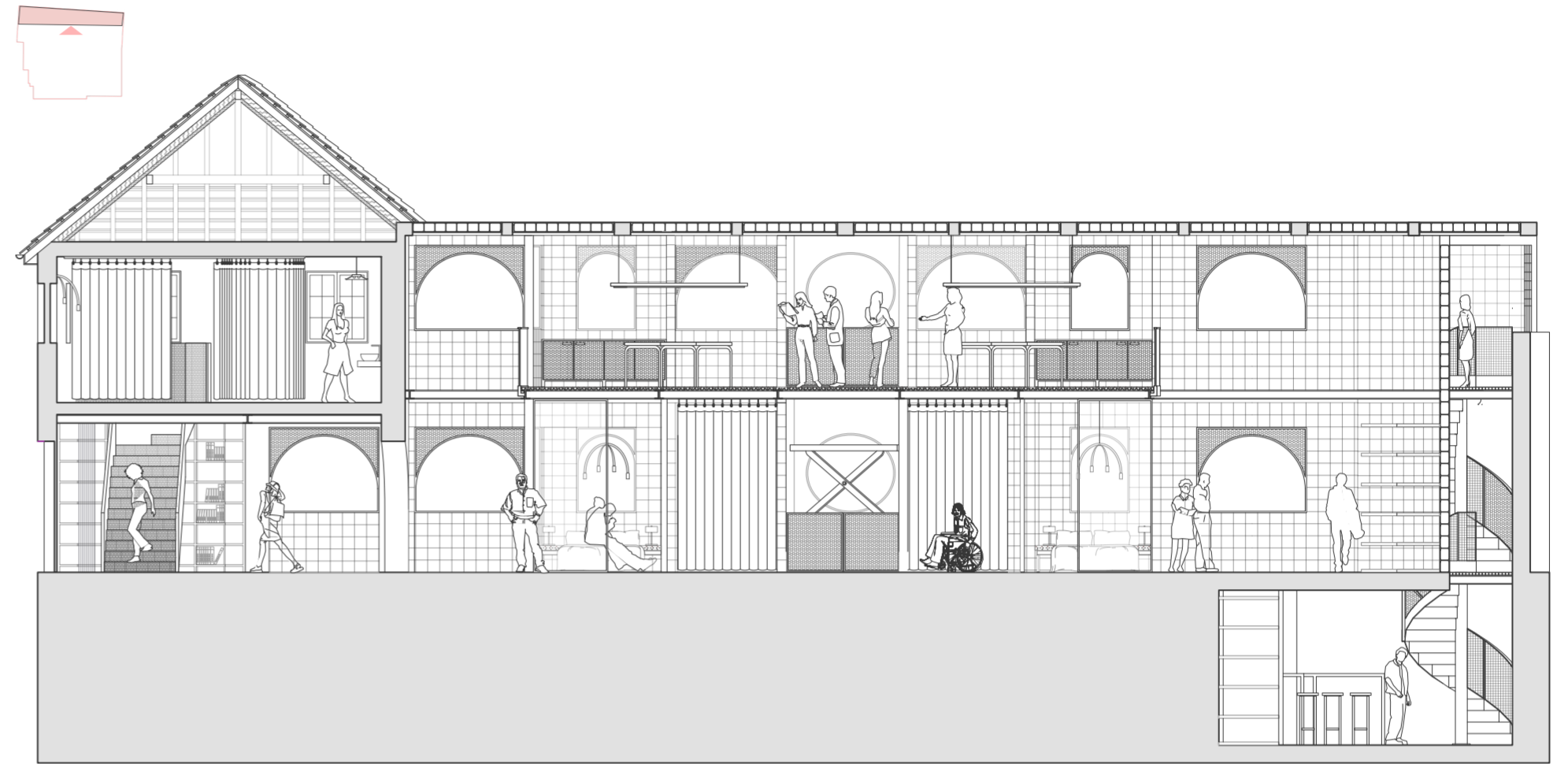
ELEVATIONS 1:200



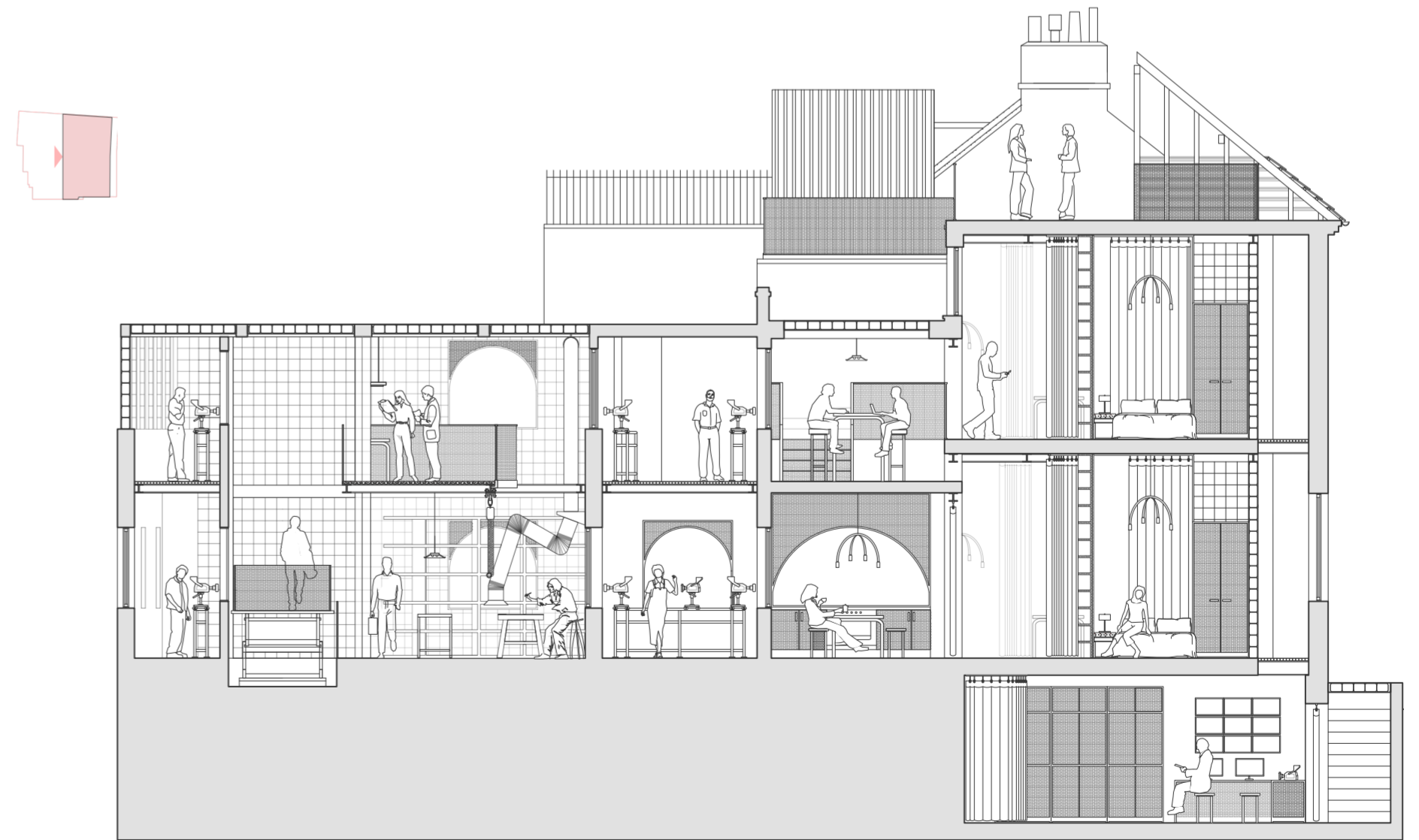
DEATAIL DRAWING 1:40



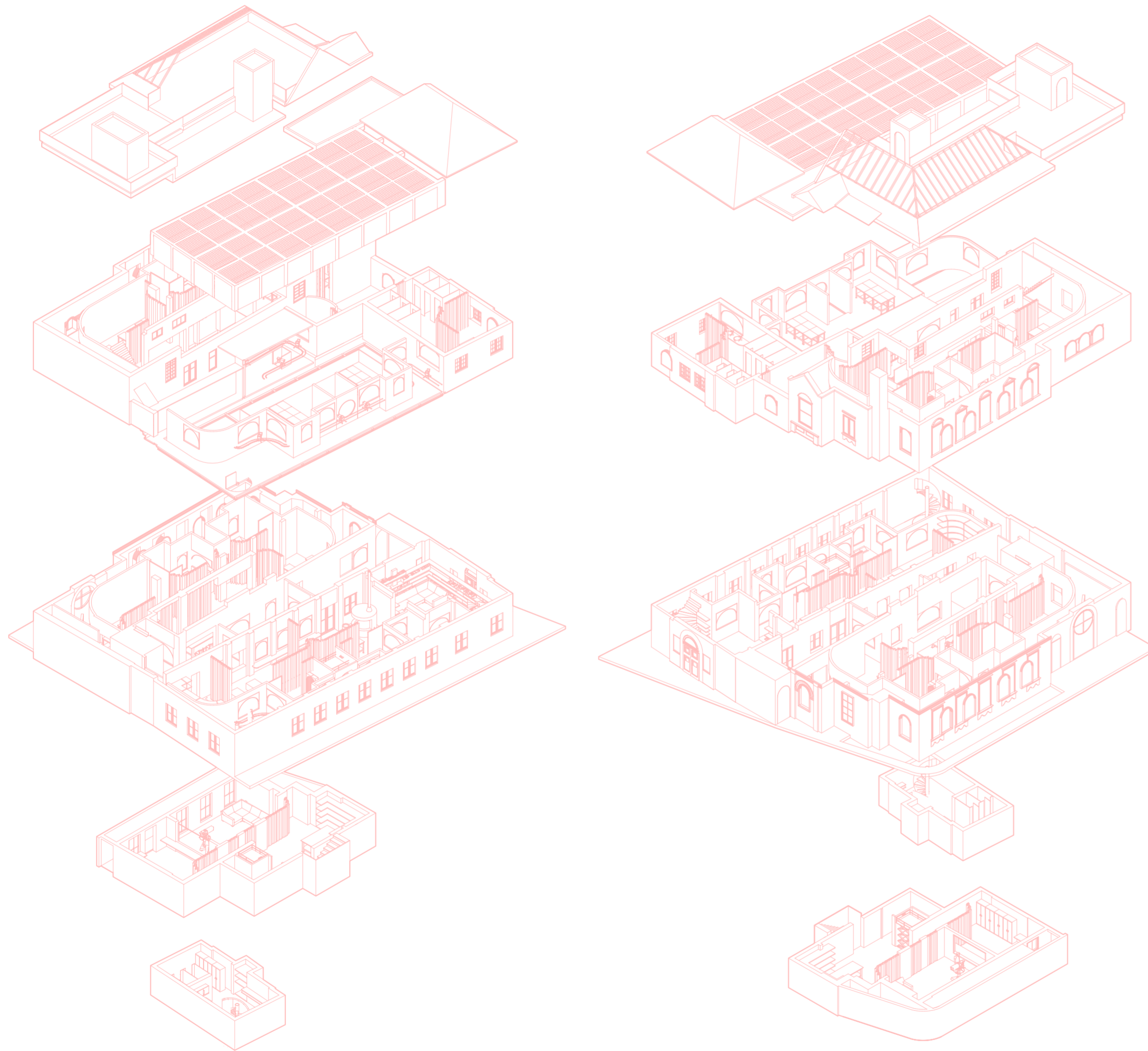
SECTION A-A 1:100



SECTION B-B 1:100



AXONOMETRY



MATERIALITY

- 1. Pink steel beams structure
- 2. Pink-orange recycled terrazzo
- 3. Perforated metal staircase
- 4. Blue soundproof curtains
- 5. Pink soundproof curtains
- 6. Glass blocks partitions
- 7. Orange perforated metal
- 8. Wood chipboard
- 9. Polished concrete flooring
- 10. Red tubular neon pendant light
- 11. Accent colour furniture/FF&E
- 12. Green velvet fabric/FF&E
- 13. Red fixtures/FF&E
- 14. Yellow fixtures/FF&E

