

# STILLWATER CIRCLE

“One-stop Essentials for the Barge Community”



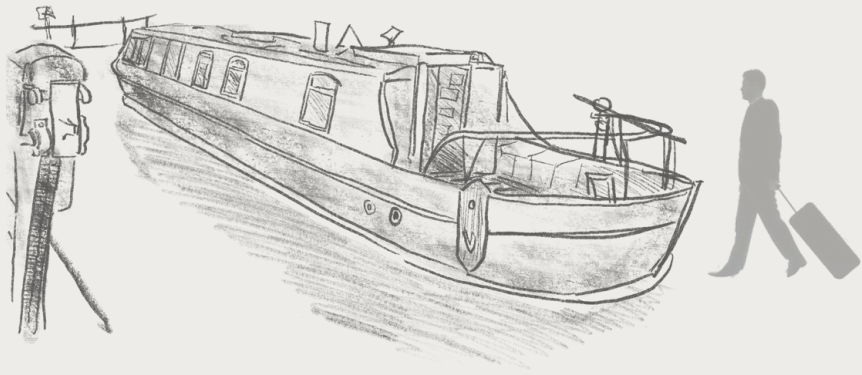
 12/13 New Wharf Rd, London N1 9RT

London's **escalating rental market** has led to a significant shift towards alternative living arrangements. In the 12 months leading up to November 2024, rents surged by 11.6%, marking the fastest annual increase since records began in 2006. This sharp rise has made **traditional housing increasingly unaffordable** for many residents. Consequently, a growing number of individuals have turned to canal boats as a viable housing option. Estimates suggest that approximately 10,000 people now reside on London's waterways, a figure that has roughly doubled since 2012.

## ISSUES

The bargee existing community, while resilient and **self-sufficient**, often faces challenges related to **social isolation, lack of communal gathering spaces**, and **limited access to shared resources**. Visiting/new bargees, on the other hand, have immediate needs such as **food and fuel**.

## Target Users

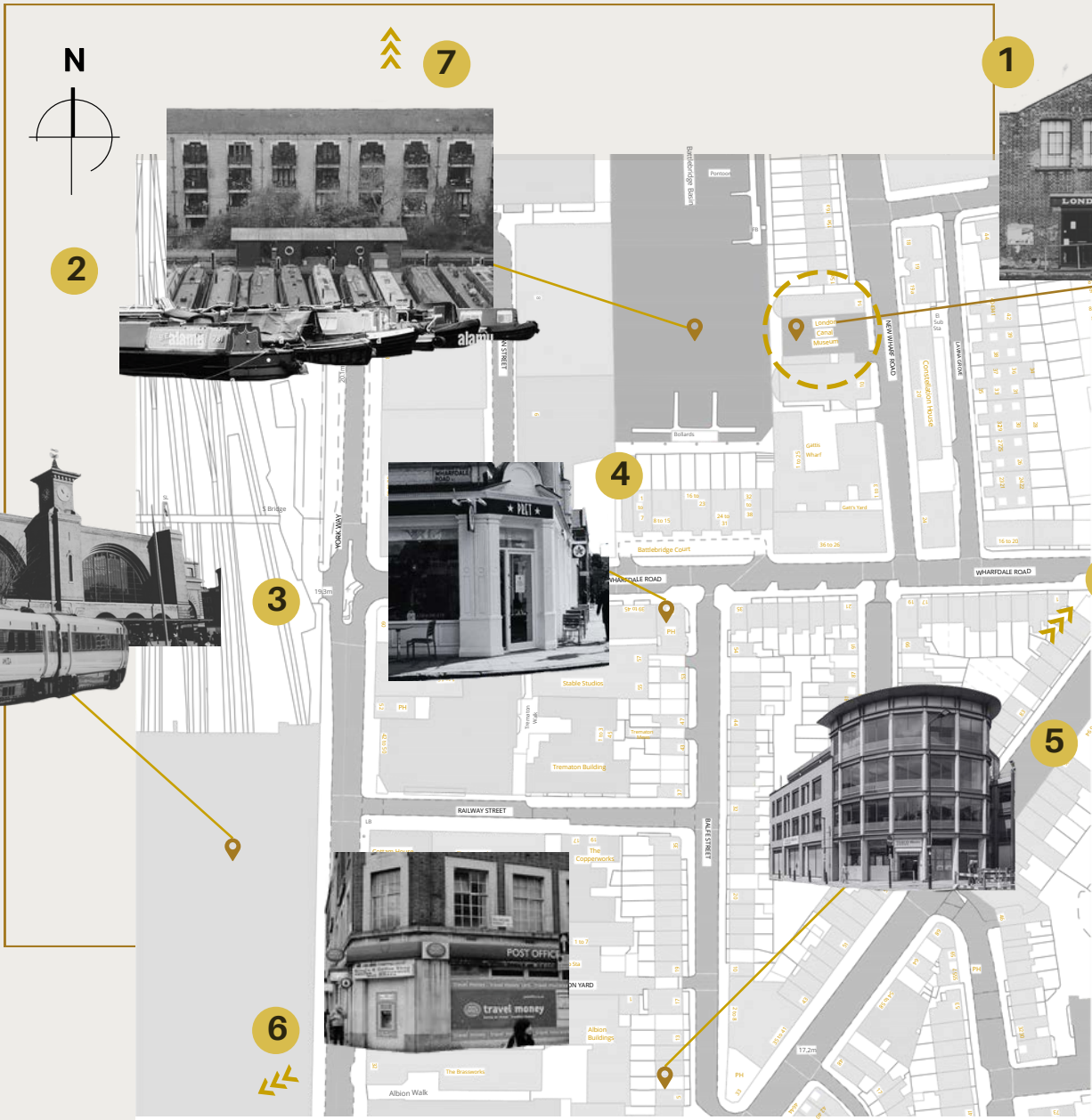


### RESOLVE #1

It can function as a **one-stop essentials supply store** for new and visiting bargees, **offering immediate basic needs**. Sources like **grocery, boat repair items, or medication** is often the first thing visiting bargees look for upon arrival. The hub for refueling and restocking. It could provide essential **groceries, maintenance tools, and emergency kits** tailored for life on the canal.

### RESOLVE #2

Although they have long adapted to survival challenges, there is a need for a dedicated **third space** to **enhance their social connections** and **strengthen their community** through **leisure activities**. In contrast to the minimalist living style, **a hint of luxury** can be provided in this space as well. The proposed idea is to build a **mini theatre** where bargees can invite friends and family to **watch movies** together or have **community meetings**.



## Site Survey

### Local Convenience for Bargees

- 1 Main Site - London Canal Museum ( 160m)
- 2 Target Barge Neighbourhood
- 3 Nearest Public Transport - King's Cross Station (400m)
- 4 Nearest Restaurant - Pret A Manger(300m)
- 5 Nearest Grocery Store - Tesco Express (300m)
- 6 Nearest Post Office - A.T.M. (650m)
- 7 Nearest Chemist - P. Edwards Chemist (800m)
- 8 Nearest Laundromat - 1 stop wash laundry (300m)



### LONDON CANAL MUSEUM SITE CONTEXT

The **London Canal Museum** is a **cultural and historical site** located near **King's Cross**, dedicated to the story of London's canals and waterways. Currently, the museum serves as a place where visitors can learn about the **history of canals**, the **lives of canal boat people**, and the **importance of waterways in London's industrial growth**. It features exhibits on canal **transport, trade, and even a preserved ice well** from its original use. The museum offers **educational programs, boat trips, and interactive displays**, making it a valuable resource for those interested in London's heritage.

- 1810
  - "Brown Field" Site
- 1850 - 1860
  - Carlo Gatti took over the site
  - 1st ice well was sunk and covered by a lightweight arch roof
- 1860 - 1900
  - 2nd ice well sunk
  - New substantial building was constructed
  - Building operated as an ice warehouse
- 1860 - 1900
  - 2nd ice well sunk
  - New substantial building was constructed
  - Building operated as an ice warehouse
- 1900 - 1926
  - Building repurposed as stables and delivery cart depot
  - The Upper floor was constructed for stables
  - Frontage remodelled and accommodation was included
- 1980 - present
  - Building repurposed as a museum
  - Restructured to be "accessible"

“ ESSENTIALS SUPPLY”  
“COMMUNITY HUB”  
“LEISURE SPACE”

# Development sketches

## Ideation & Iterations

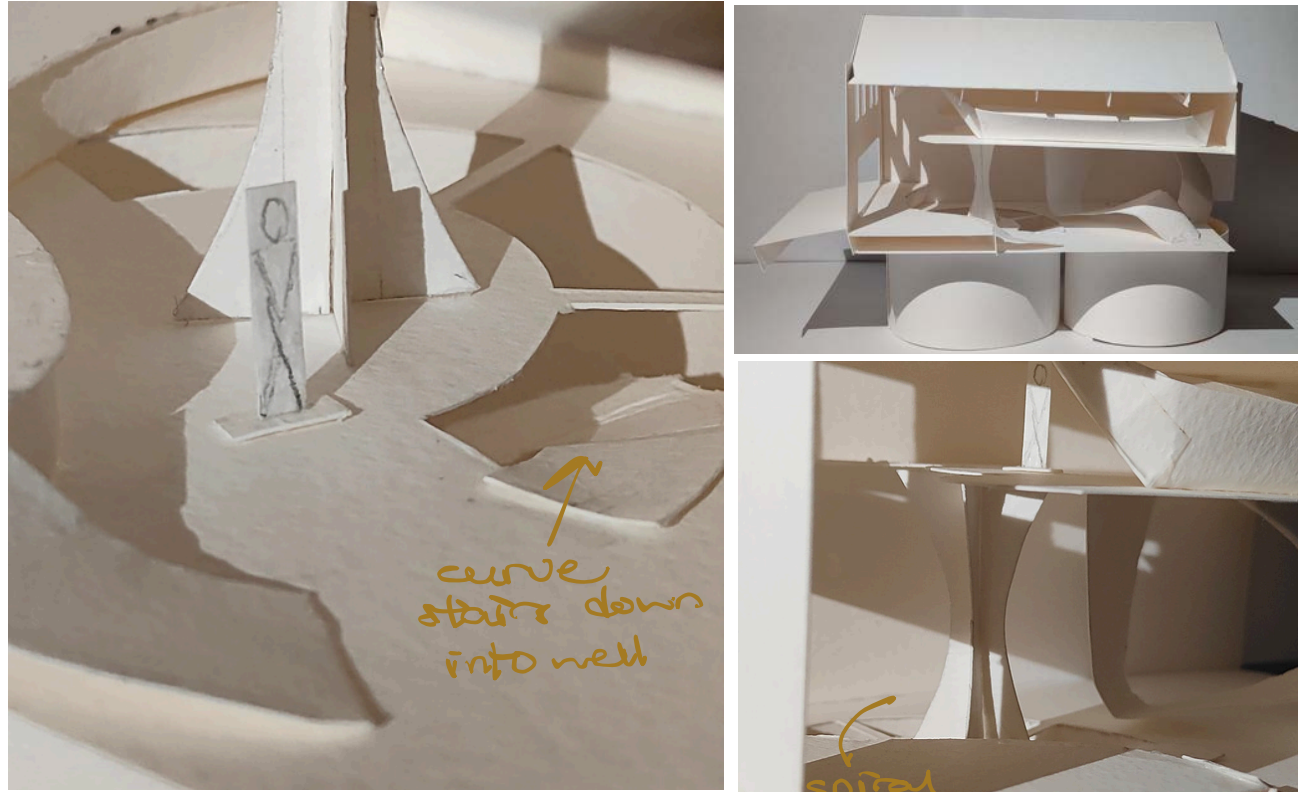
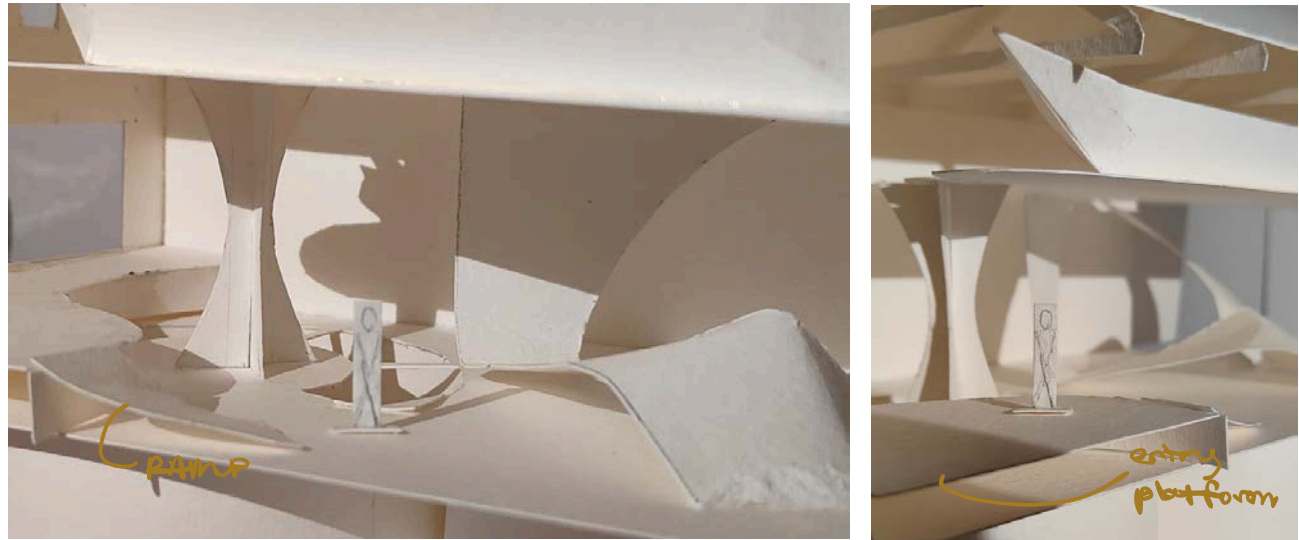
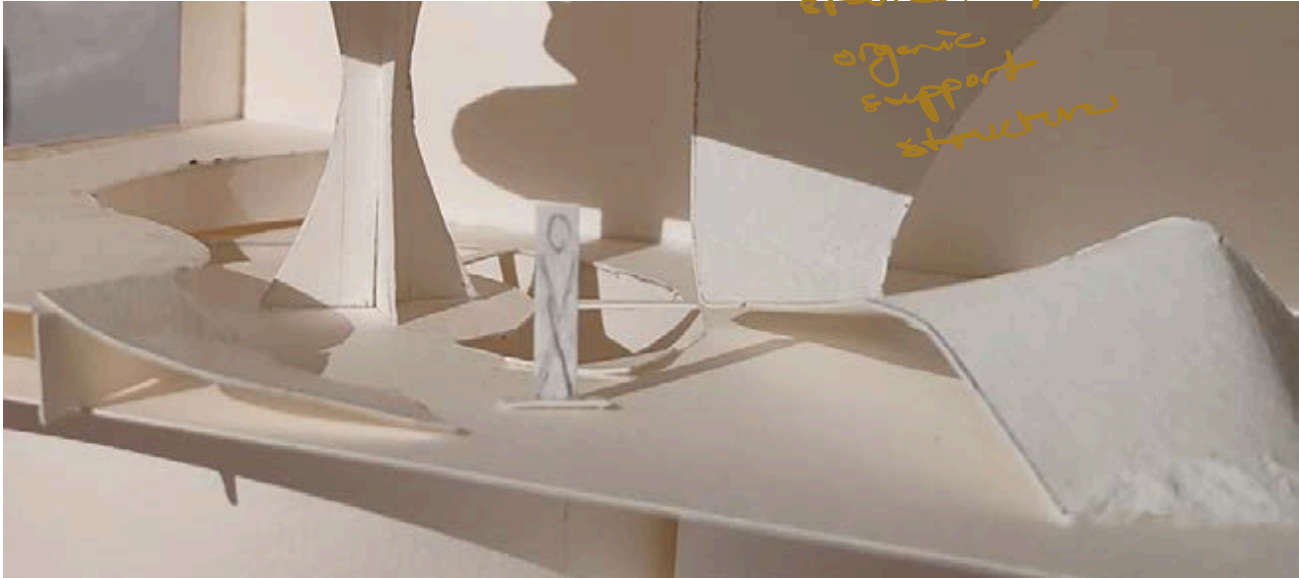
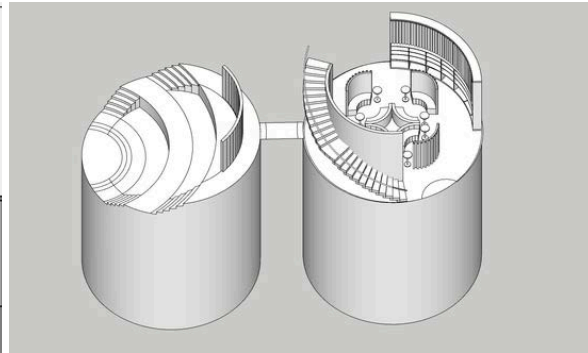


Fig. above shows the space above the ice well

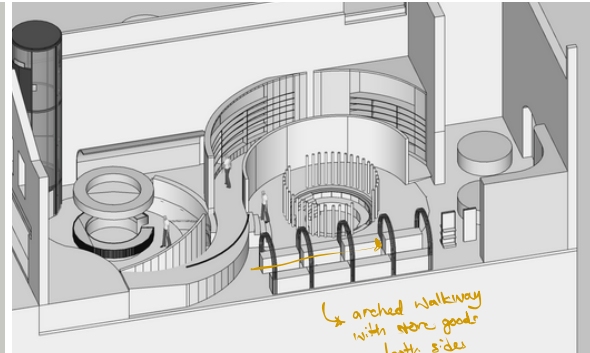


\*fig.1 stage 1 development

\*fig.2 basement skylight configuration



\*fig.3 basement plan configuration

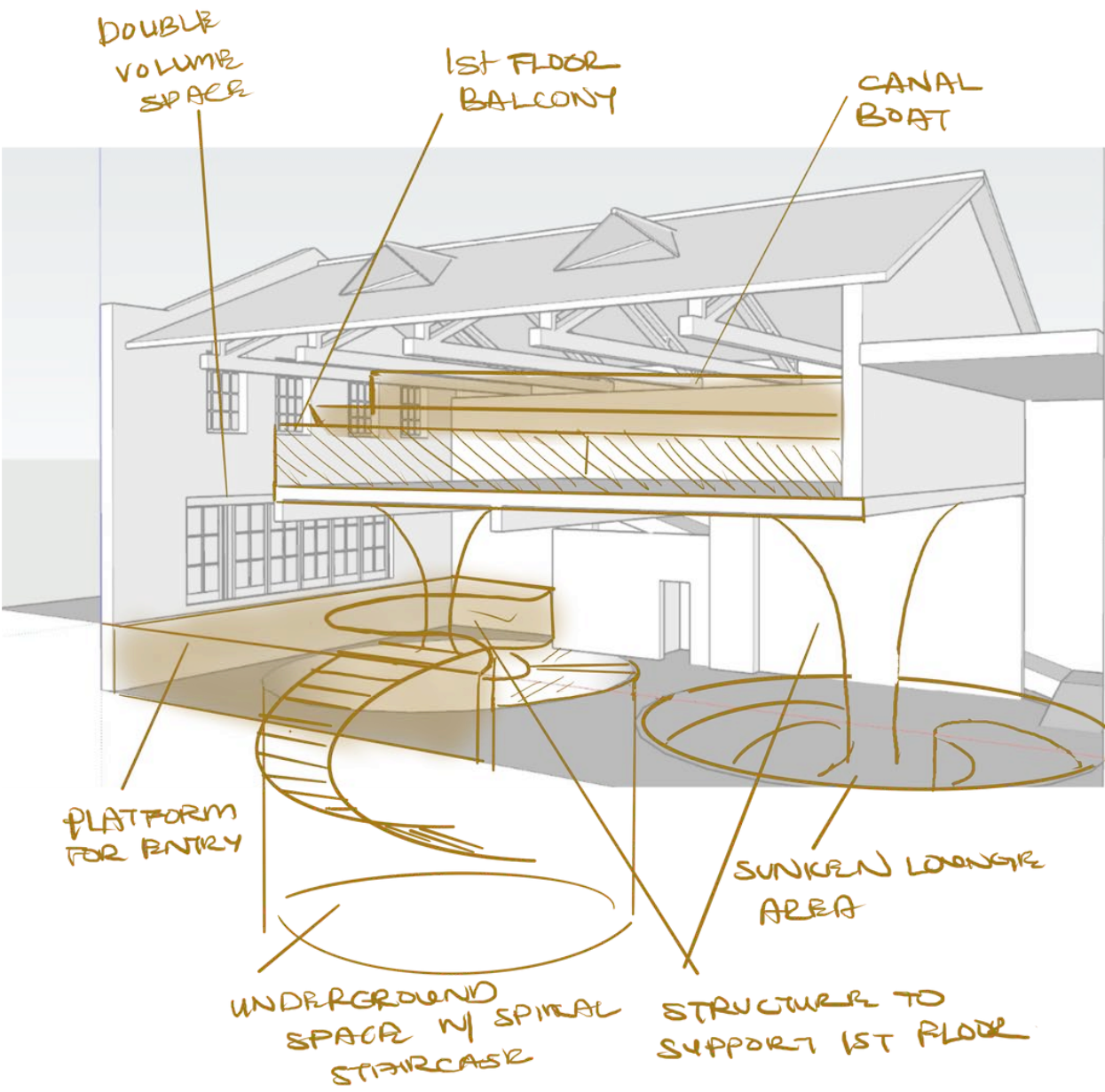


\*fig.4 ramp & spatial programming



## Mock Maquette

While re-imagining the existing element of a platform and ramp, I wanted to visualize a continuous **circular language that communicates throughout the entire model**—from the flooring system to the vertical support structures—creating a cohesive spatial dialogue. My intention was to explore how geometry could evoke inclusivity while maintaining aesthetic integrity, **ensuring the design remains accessible** and welcoming. Particular attention was given to integrating smooth transitions and generous proportions to accommodate wheelchair users, emphasizing accessibility not just as a requirement, but as a guiding principle in the overall architectural concept.



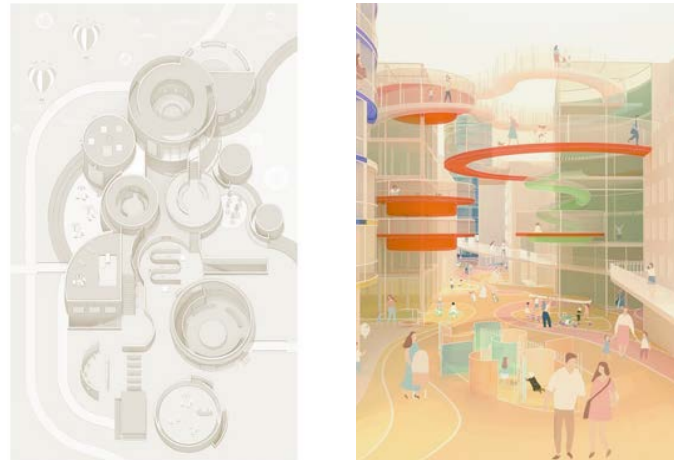
WHAT CAN THIS SPACE BE DEDICATED TO?

- LEISURE
- NEIGHBOURHOOD MEETING SPACE FOR BARGES IN THE AREA
- COMMUNITY HUB
- LOUNGE TO HOST GATHERINGS
- INFO HUB FOR VISITING BARGES

in theme with the canal water, my first thought was making a structure that resembled **water ripples**. The round spaces would then segregate the meeting spaces. The circular design inspired the existing **cylindrical wells**.



Fig. ref to water ripple structure

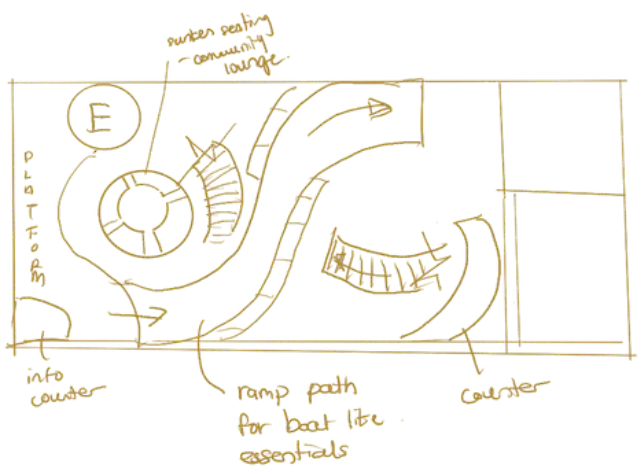


\*reference to dynamics of cylindrical forms

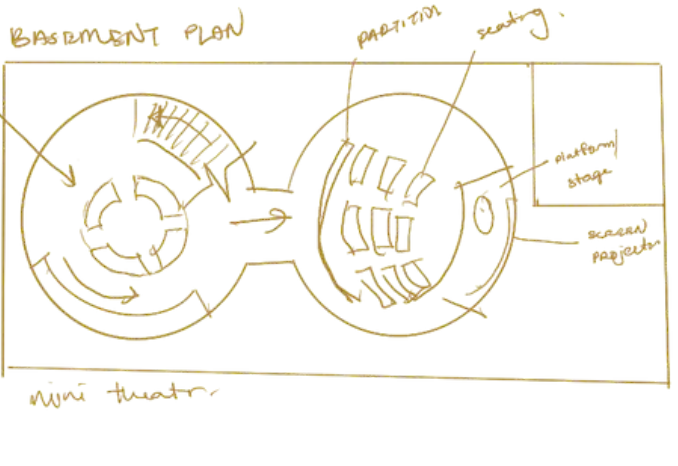
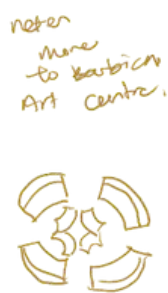
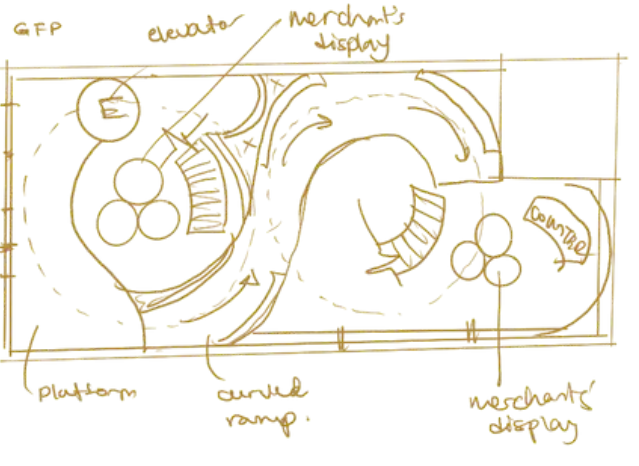
## Development

With my previous project in mind, I tried to recreate a platform that has dynamic platforms. However, several issues came up: accessibility in **circulation**, the **ramp had to be more 18m to fit in regulation** (with that in mind, the ramp would be extended to the store front.), and the **scale** of all the elements doesn't seem to fit together harmoniously. However, one of the key elements I wanted to maintain was the **"accessibility"**, hence, the ramp eventually became a big part of the circulation and design form. But still wanting to incorporate the **cylindrical element**, I made a decision to **shape the ramp** that wraps around the form of the well. In another way, the ramp also became the **main circulation of the ground floor**. The idea was to have customers grabbing their essentials as the walk along the ramp, and at the end of it would be the cashier counter.

Ground floor plan - Phase 1



Ground floor plan - Phase 2



# The Stillwater Circle

## Orthographic Drawings

Introducing the “Stillwater Circle”, a **one-stop essentials and communal space** for barges in the area.

The stillwater circle serves **3 main purposes.** :

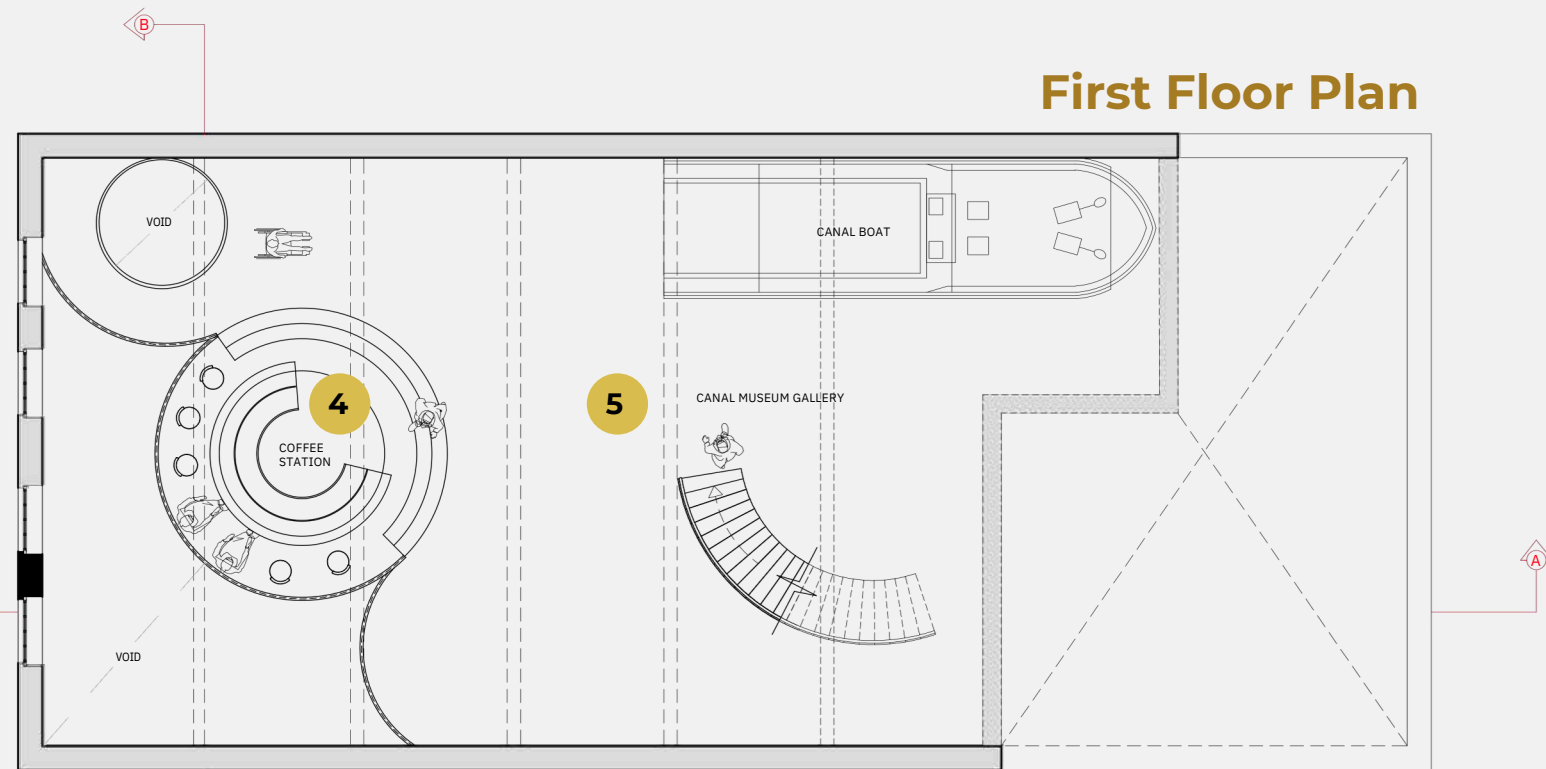
For **existing bargees** living in the neighbourhood, a luxurious **communal space** for hosting gatherings, neighbourhood meetings and mini theatre nights is provided.

For **visiting bargees** without permanent mooring, essentials like non-perishable food, fuel, boat repair kit/parts, and chemists is provided.

Lastly, for the **public**, the original canal museum is reserved. While retaining the gallery, a refreshment area is added.

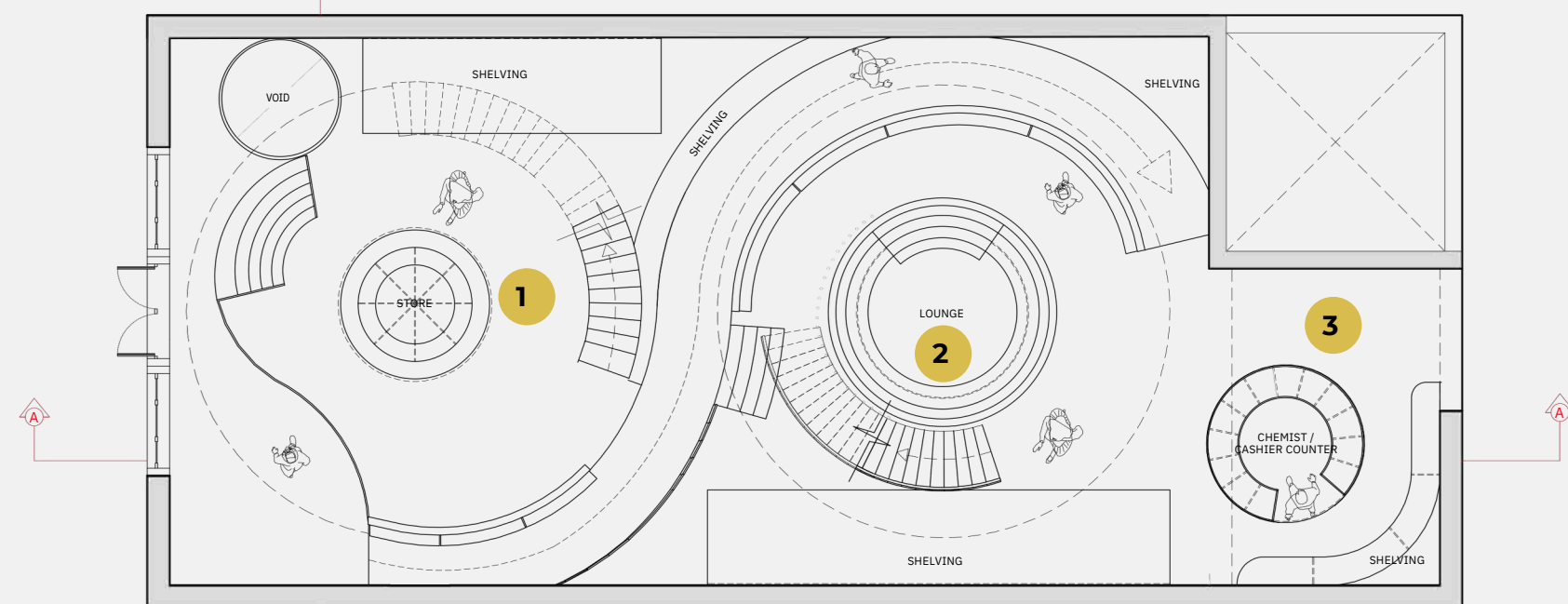
In a way, Stillwater Circle is an opportunity to **reimagine the London Canal Museum as a living, breathing part of the bargee experience.** By repurposing this historic site, we not only **preserve its legacy** but also activate it as a vibrant, functional space that **truly serves the people who rely on the canals.**

### First Floor Plan



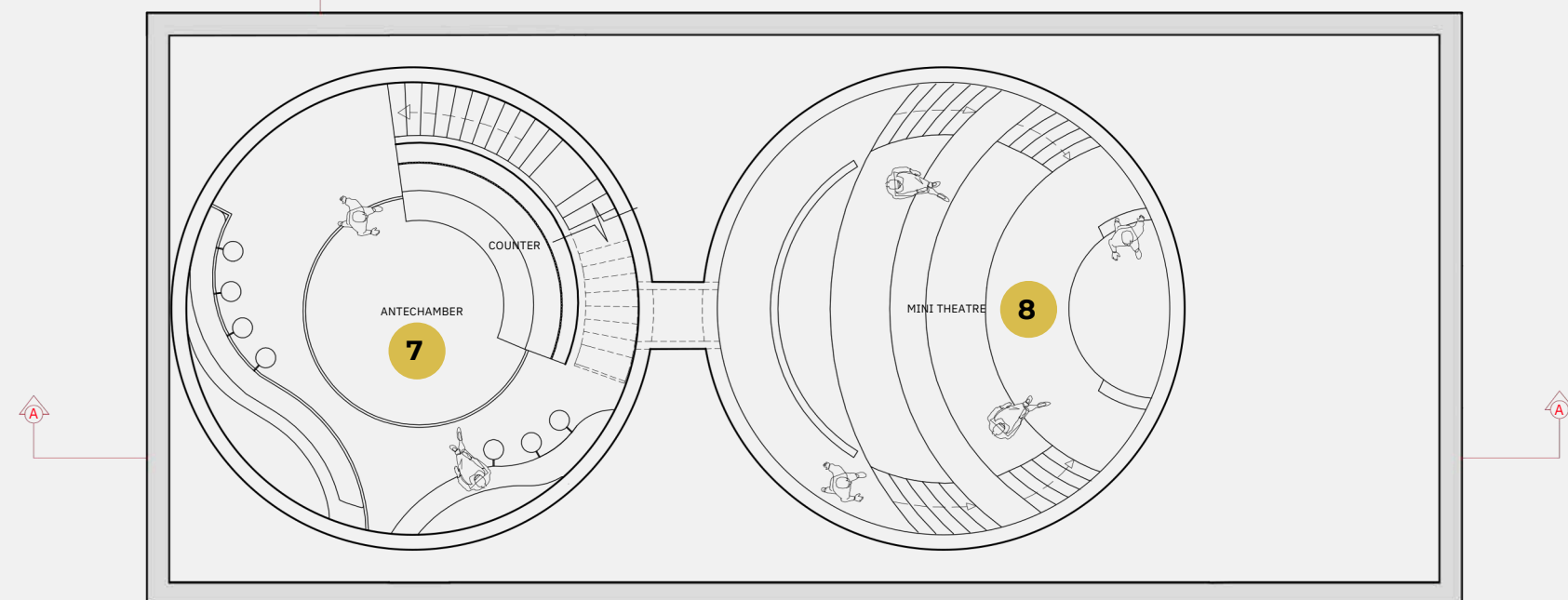
FFP  
FIRST FLOOR PLAN  
SCALE : 1:150

### Ground Floor Plan



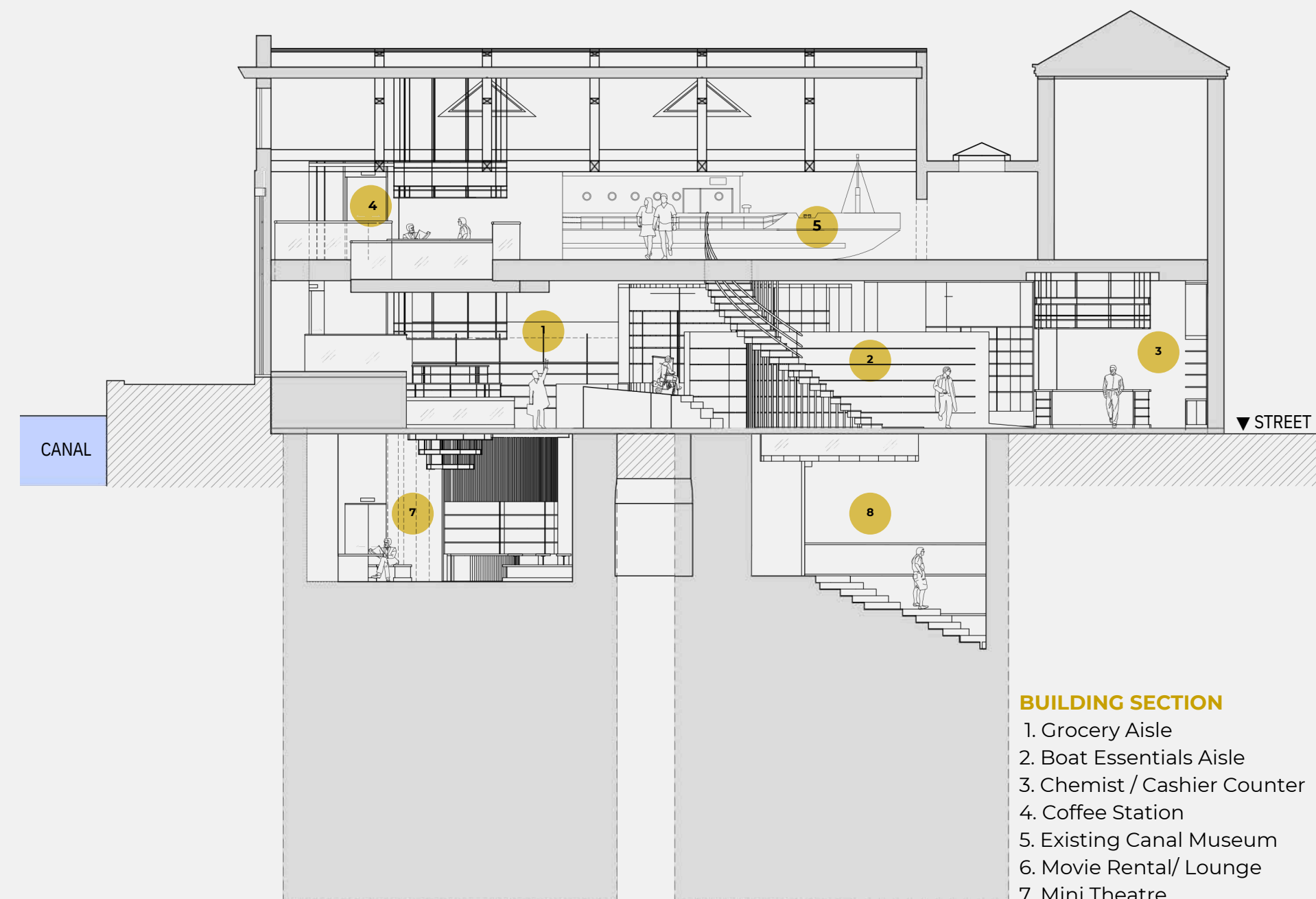
GFP  
GROUND FLOOR PLAN  
SCALE : 1:100

### Basement Floor Plan



BFP  
BASEMENT FLOOR PLAN  
SCALE : 1:150

### Long Section

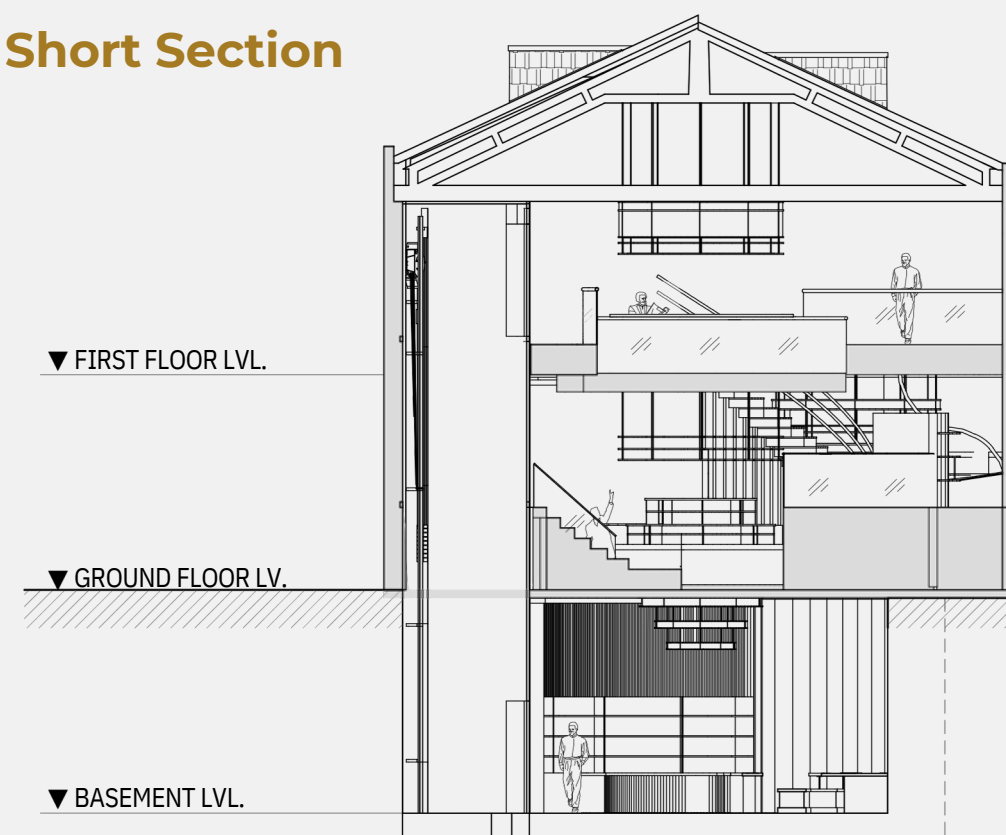


SEC  
AA  
SECTION A-A  
SCALE : 1:150

#### BUILDING SECTION

1. Grocery Aisle
2. Boat Essentials Aisle
3. Chemist / Cashier Counter
4. Coffee Station
5. Existing Canal Museum
6. Movie Rental/ Lounge
7. Mini Theatre

### Short Section



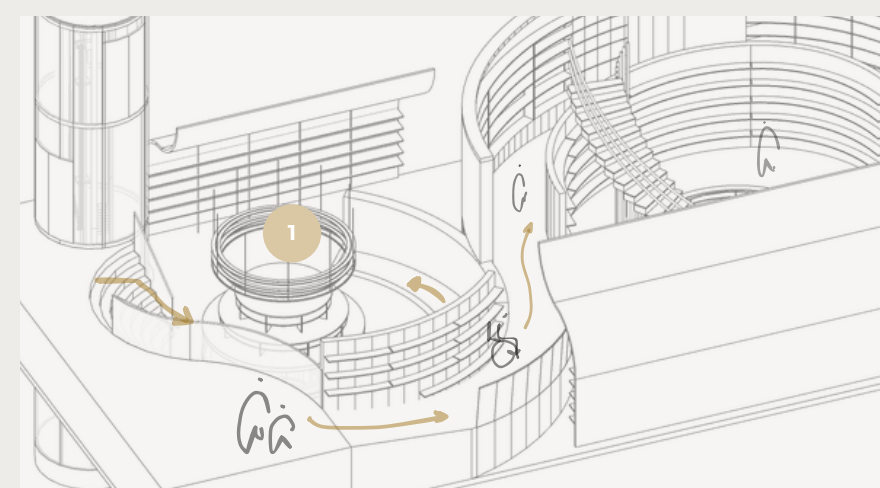
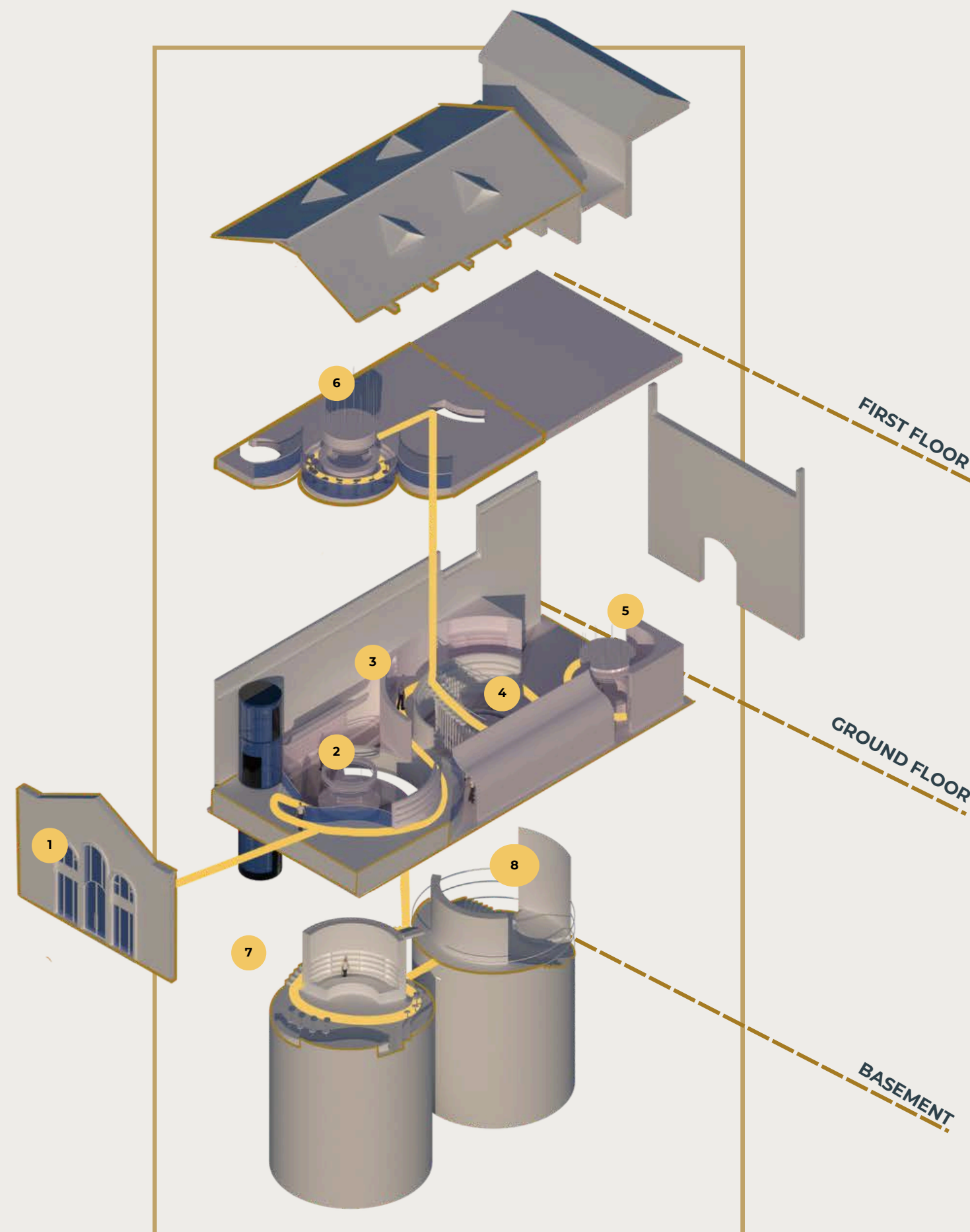
SEC  
BB  
SECTION B-B  
SCALE : 1:100

### Facade



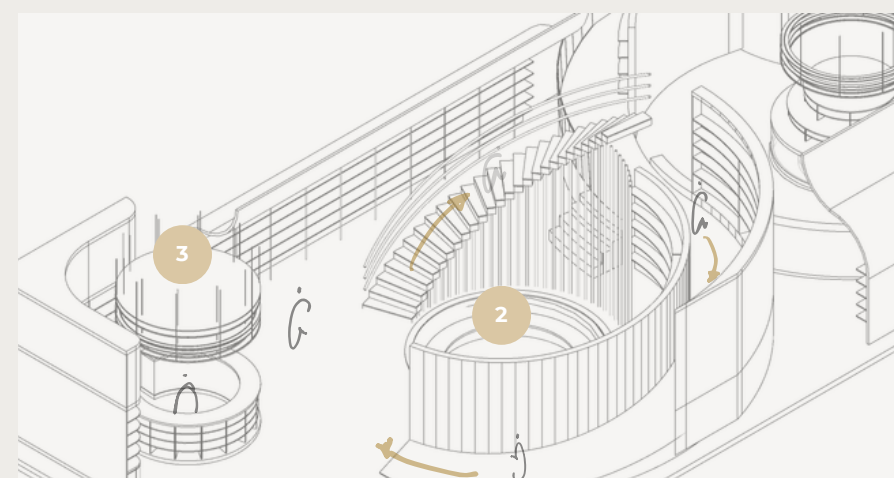
ELE  
W  
WEST ELEVATION  
SCALE : 1:100

# CIRCULATION

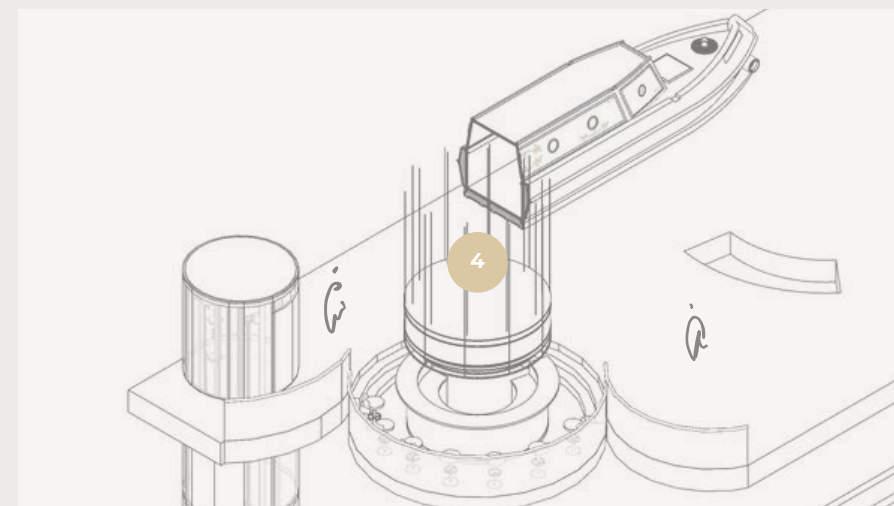


1. Nearest to the entrance, bargees can find **unperishable grocery** - eg. water and canned food

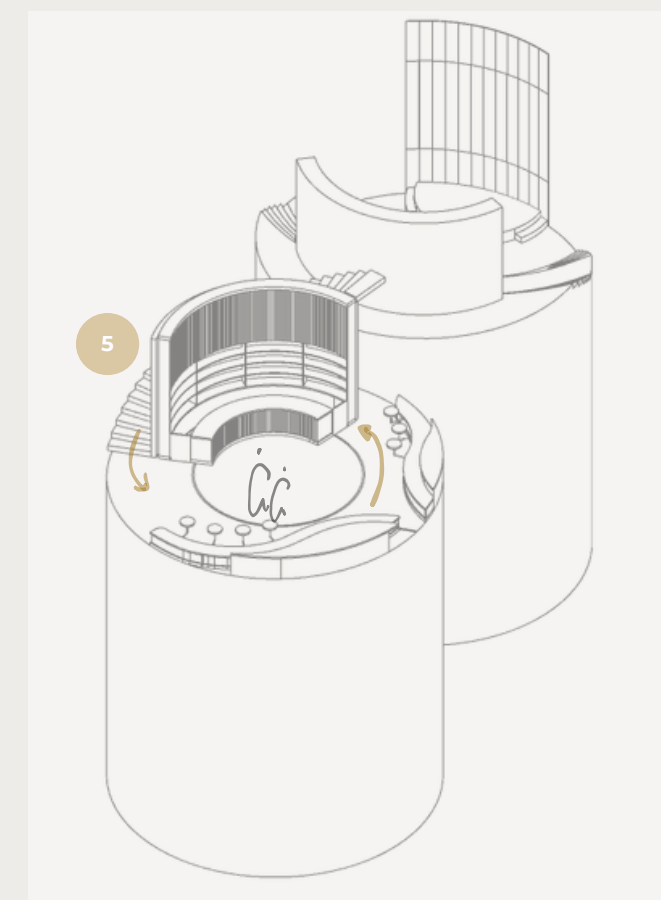
2. Along the curved ramp, bargees can find **boat renovation supplies**, or small boat parts. A **community lounge** for resting is offered at the end of the ramp.



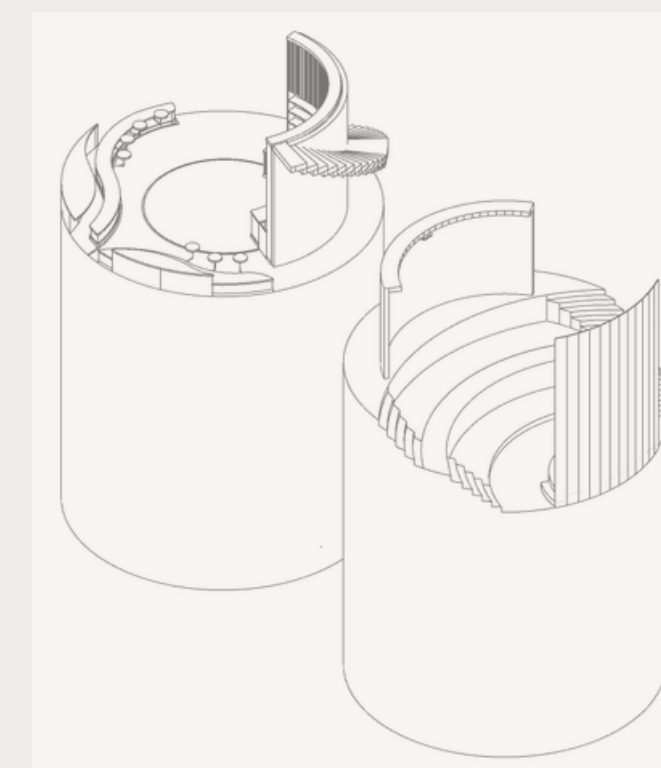
3. At the corner of the building, a **mini pharmacy** is provided, the space also serves as a **cashier counter**, for bargees to pay for their items.



4. On the **first floor**, where the canal boat exhibition is situated, a **free coffee station** is provided for visitors of the museum.

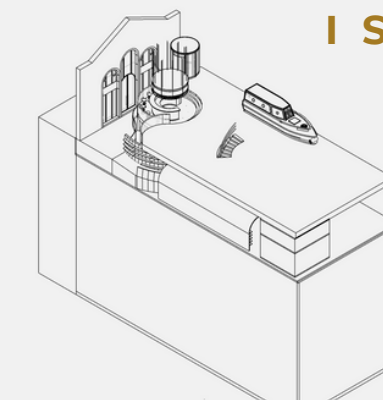


5. Down at the basement, the first well acts as an antechamber to the theatre. In here, bargees can request to **rent movies** to watch in the theatre or **chill at the lounge**,

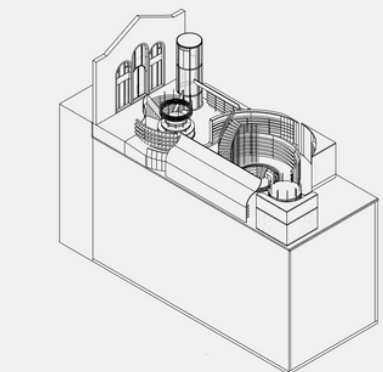


6. In the **mini theatre**, bargees can enjoy **watching movie** or **utilise the screen projector** for any **community meetings**.

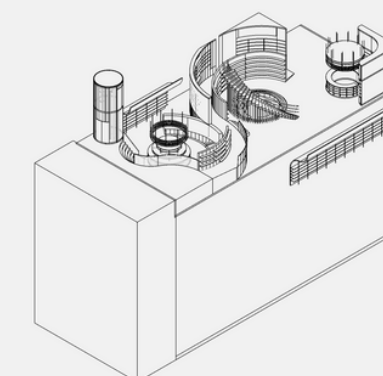
# ISOMETRICS



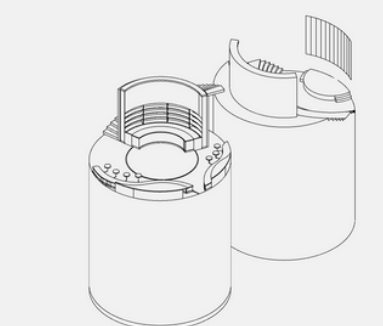
1  
FIRST FLOOR  
- MUSEUM GALLERY



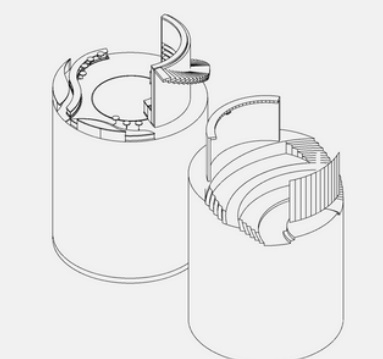
2  
GROUND FLOOR  
- ESSENTIALS STORE



3  
GROUND FLOOR  
- ESSENTIAL STORE



4  
BASEMENT  
- LOUNGE



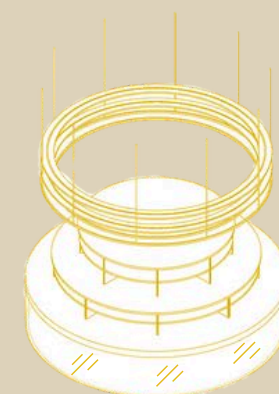
5  
BASEMENT  
- MINI THEATRE

# STORYBOARD

# SPATIAL ELEMENTS



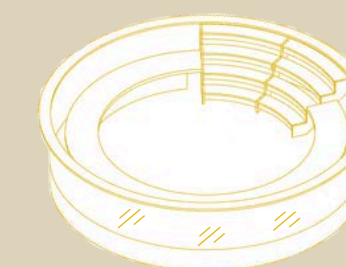
1 **TRIPLE FACADE**  
The entry point has a **double-height structural** feature to allow extra natural lighting and showcase the double volume space in the ground floor.



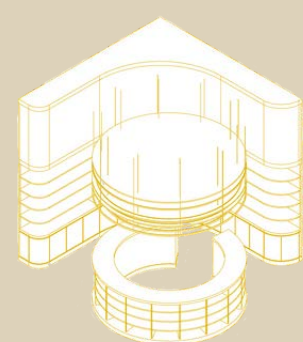
2 **CIRCULAR GLASS STRUCTURE**  
The round glass structure below functions as a **skylight**, through to the lower level. It comes with a circular **grocery shelving** as part of the store.



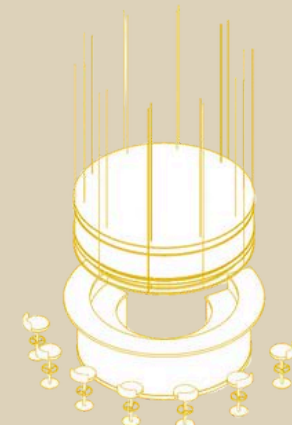
3 **CURVED RAMP**  
The store integrates a gently sloped curved ramp that weaves through the interior as a **primary circulation path**. The design also ensures **full accessibility** to all groups of users.



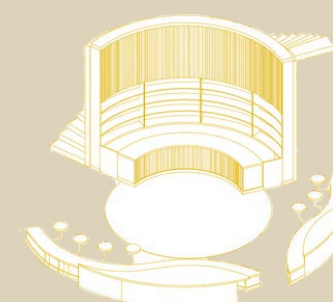
4 **COMMUNITY LOUNGE**  
The sunken community lounge, **recessed slightly into the basement**. This features allow users on the ground floor to **peek down** on what's going on below in the basement.



5 **COUNTER**  
This circular structure is functions as a **transactional (cashier) and advisory (chemist)** counter for customers of the store.



6 **COFFEE STATION**  
This coffee station is situated on the first floor for **free access** to **refreshments** for people visiting the existing **canal museum**.



7 **COMMUNITY LOUNGE**  
This space acts as an **antechamber** that leads to the mini theatre. In this space, the barge community can **rent movies** at the counter or chill at the sitting area.



8 **MINI THEATRE**  
The **natural depth** of the ice well sculpt the **tiered seating levels** that step down into the well itself. The existing cylindrical structure provides a natural **amphitheatre effect**. This space is used for movies or meetings.

# The Stillwater Circle

## VISUALS



\*REF. STORYBOARD 1 - GROCERY AISLE



### Material Selection - 1<sup>ST</sup> Floor & Ground Floor

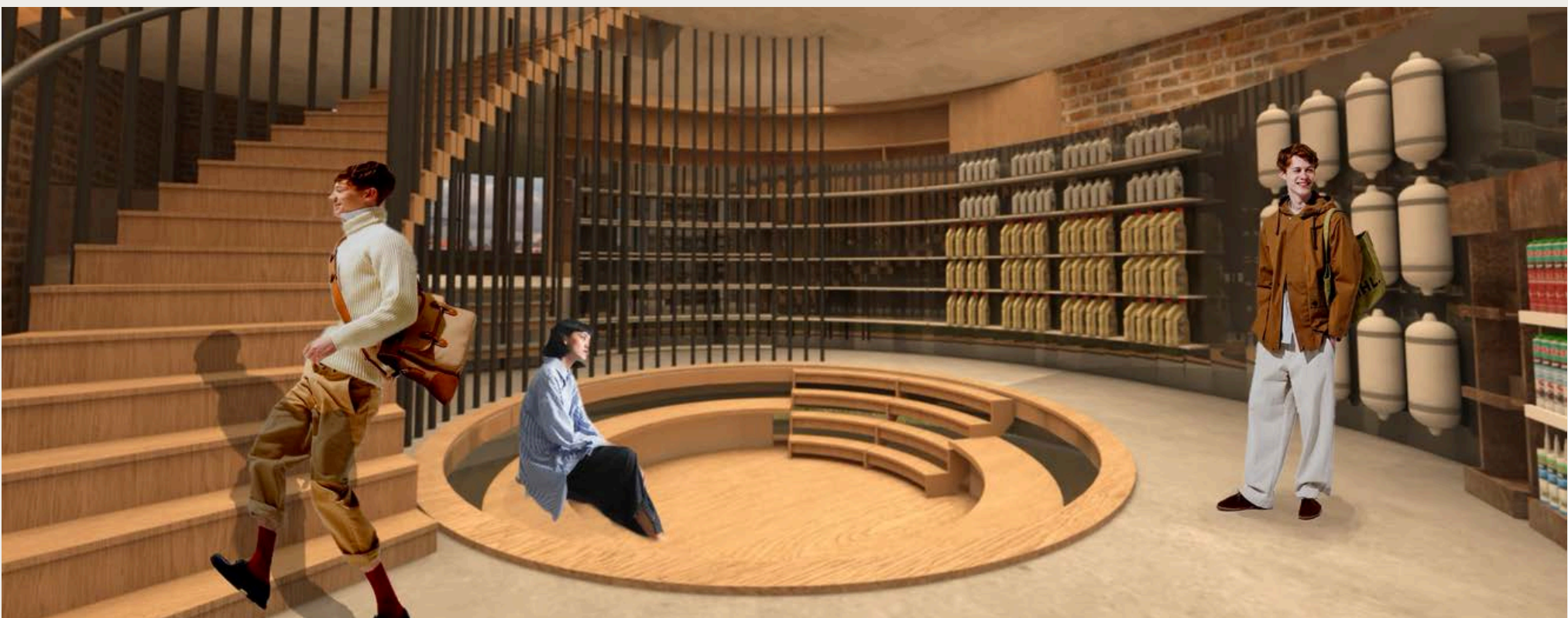
- 1.Travertine flooring
- 2.Oak wood High-Pressure Laminate (HPL)
- 3.Architectural-Grade Copper Sheet with Antimicrobial Clear Coat
- 4.Exisiting Brick Walls
- 5.Blackened Mild Steel with Clear Matte Lacquer



\*REF. STORYBOARD 4 - COFFEE STATION



\*REF. STORYBOARD 3 - BOAT SUPPLIES



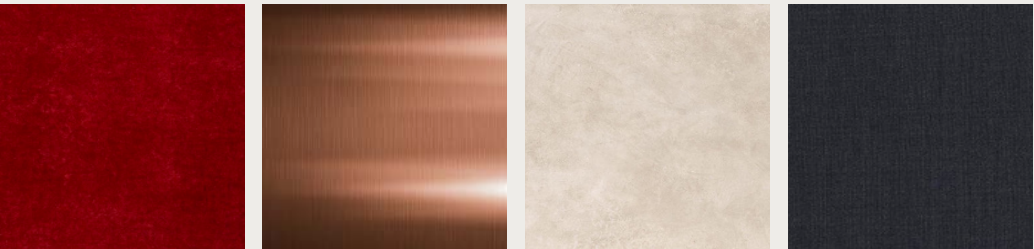
\*REF. STORYBOARD 2 - BOAT SUPPLIES



\*REF. STORYBOARD 5 - COMMUNITY LOUNGE



\*REF. STORYBOARD 6 - MINI THEATRE



### Material Selection - Basement

- 1.Red Velvet Upholstery Fabric
2. Anodized aluminum powder coated in champagne finish
- 3.Moroccan lime plaster -Tadelakt
- 4.Dark Grey Acoustic Wall Panels



FIG. FACADE