

THREADSCAPE

Reviving Textiles & Community, Weaving Identities and Crafting Futures

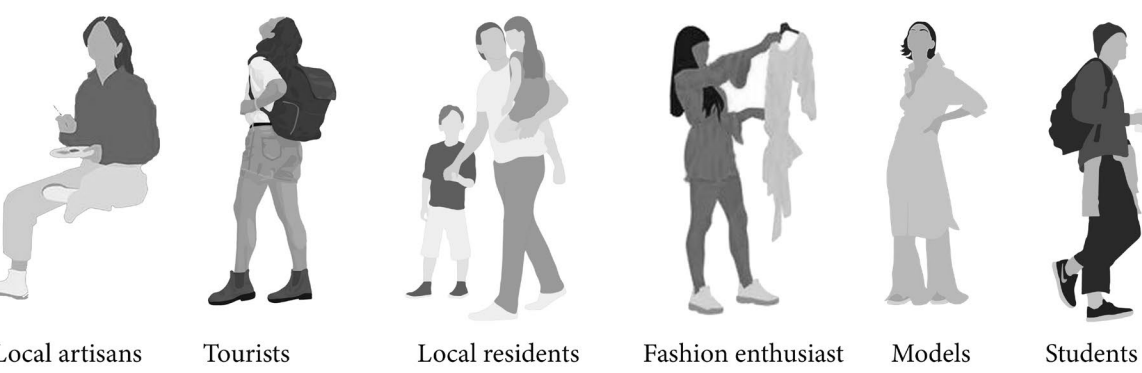
Threadscape is an immersive exploration into the intertwined realms of heritage, sustainability, and creative renewal. Rooted in the revival of lost skills and traditional practices, this project rethreads fragmented narratives—one stitch at a time—while addressing the urgent need to live within the Earth's natural limits.

In a world shaped by speed, waste, and overconsumption, Threadscape offers a slower, more intentional rhythm. It invites communities to return to the tactile wisdom of making—to learn through the act of doing, to craft with care, and to reconnect with the cultural memories embedded in fabric and form.

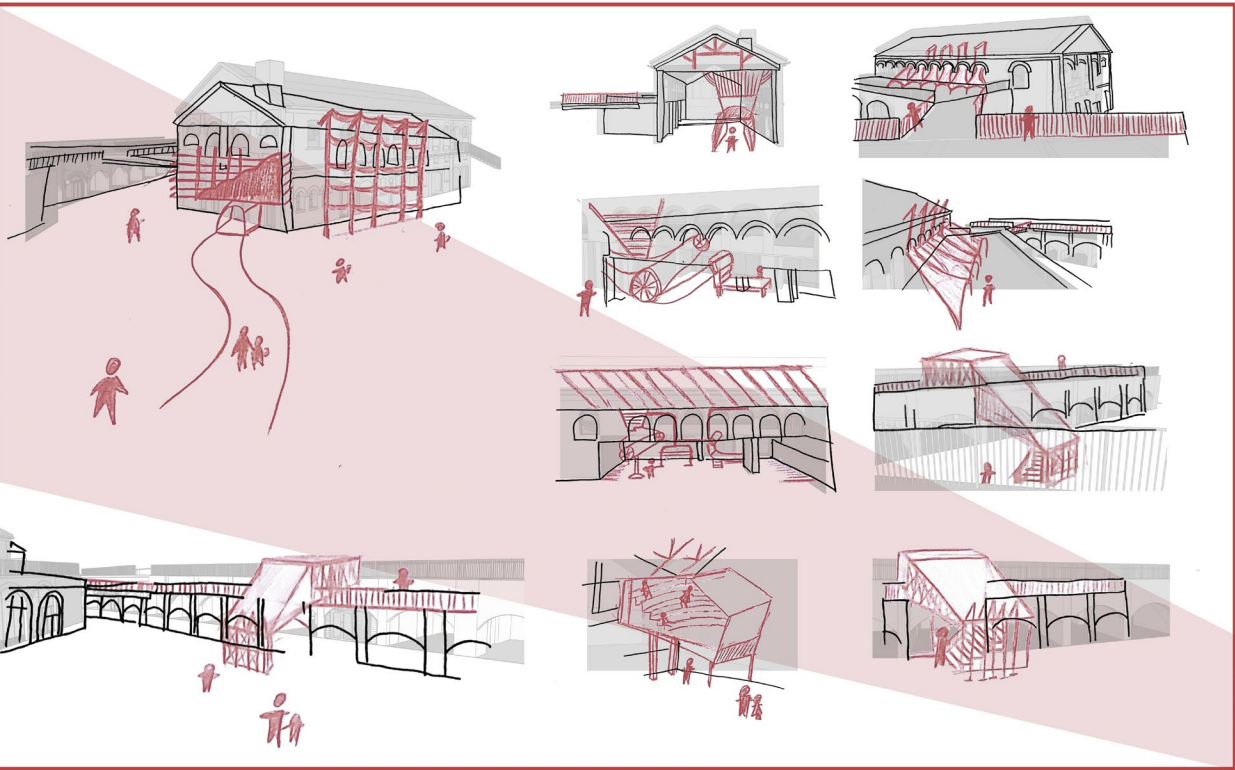
Built on a foundation of storytelling, upcycling, and communal learning, Threadscape transforms discarded textiles and forgotten techniques into vessels of identity, resilience, and belonging. By diverting textile waste from landfills and reducing demand for new material production, the project contributes to lowering carbon emissions and promoting a circular, resource-conscious approach to design.

This is not merely a project about textiles—it is about people, place, and the quiet power of reconnection. Through collaborative workshops and shared making, Threadscape becomes a regenerative space where the past informs the present and sustainable futures are crafted from the threads of what came before.

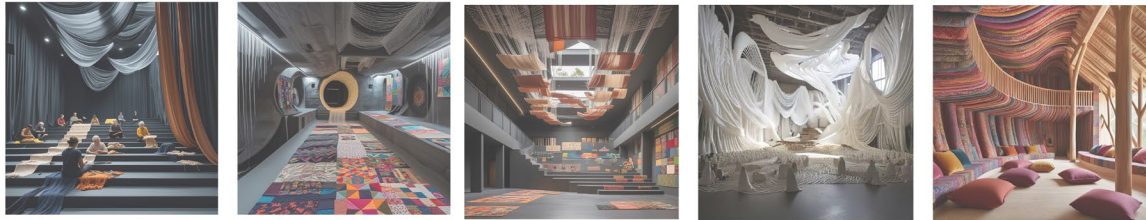
USERS AND INHABITANTS:



INITIAL SKETCHES FOR STORY BOARD:



AI IMAGES AND MANIFESTO:



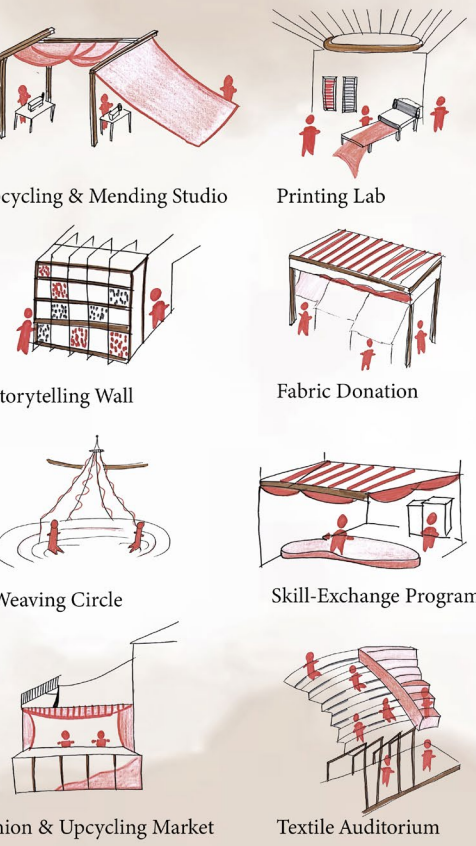
As my manifesto states, "the fabric of our collective identity is often stitched together from the remnants of forgotten practices, untold stories, and discarded materials." This visual translation highlights the act of rethreading history into the modern world.



Textiles are not just fabric but also carriers of history, culture, and identity. Yet the old stories and crafts of textiles are being lost with mass production and fast fashion. Every strand of yarn has a tale to be told, and it is down to us to uncover lost techniques and honor the craftspeople who have kept the traditions alive.

THE FACADE:
The facade of THREADSCAPE embodies these values through its lightweight steel framework, draped in recycled fabric panels and mesh cladding. This breathable, durable envelope minimizes environmental impact while showcasing how storytelling and sustainability can be interwoven into architectural materiality.

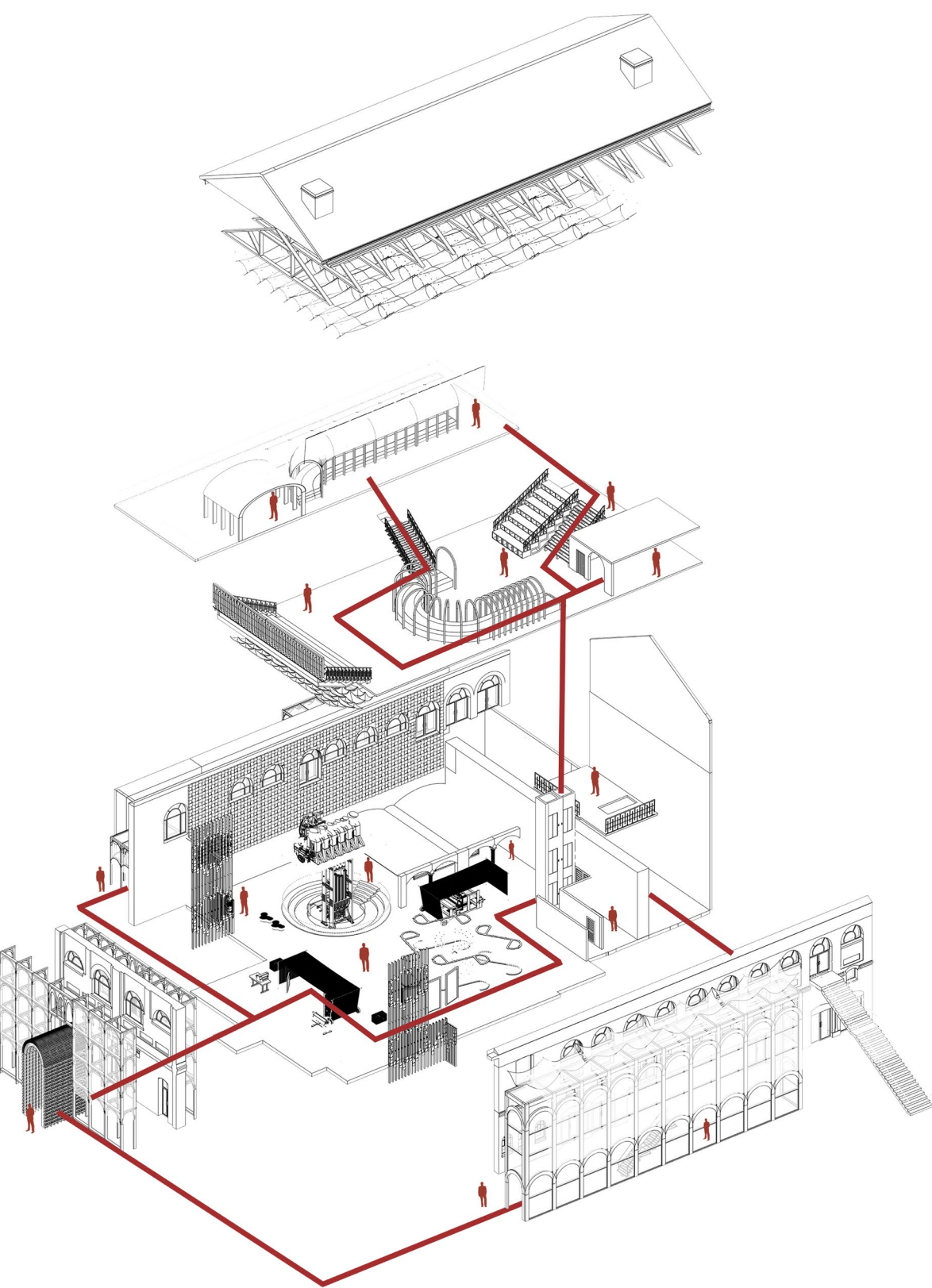
ACTIVITIES PROGRAMMING AND SDGS:



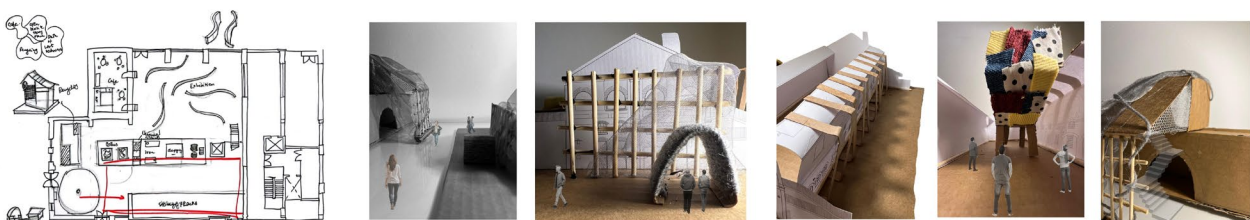
THREADSCAPE supports SDG 4 by offering inclusive workshops that revive lost textile skills. It fosters community and sustainability (SDG 11) through adaptive reuse and accessible design. By encouraging fabric recycling and mindful making, it promotes SDG 12 and contributes to climate awareness under SDG 13. Through shared making and storytelling, it reconnects people with craft, culture, and conscious living..



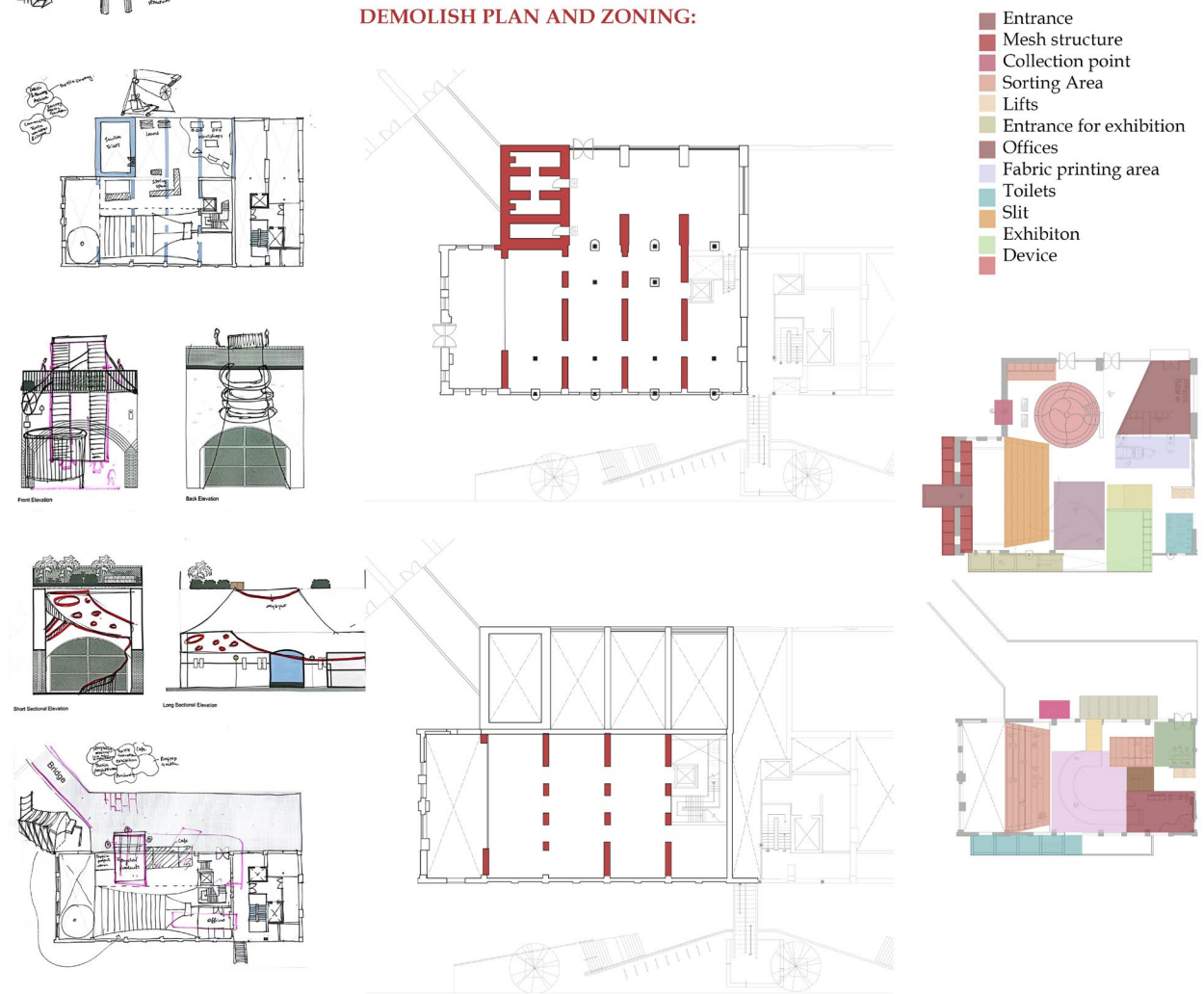
CIRCULATION DIAGRAM:



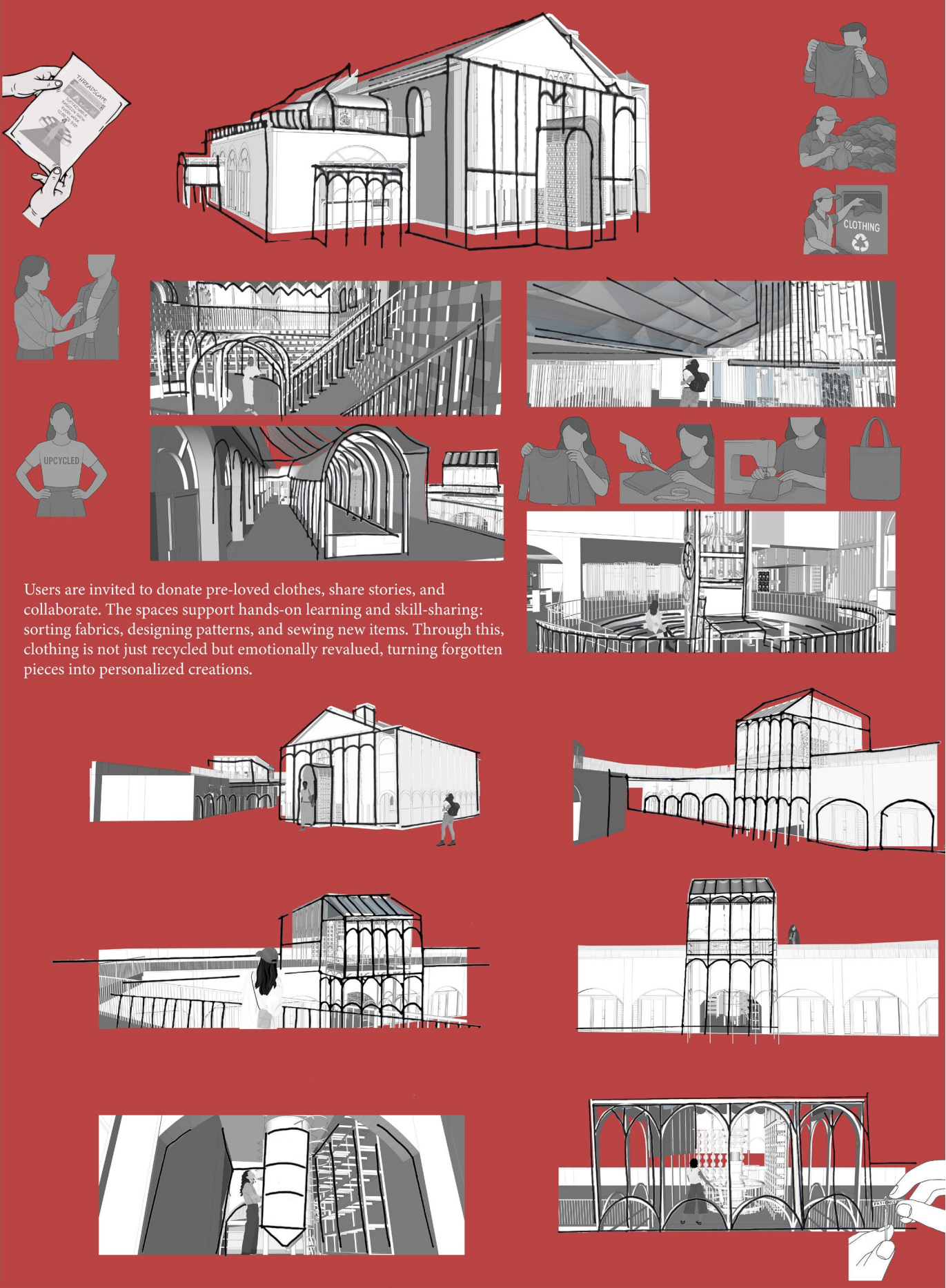
INITIAL LAYOUT AND MAQUETTE MODEL:



DEMOLISH PLAN AND ZONING:

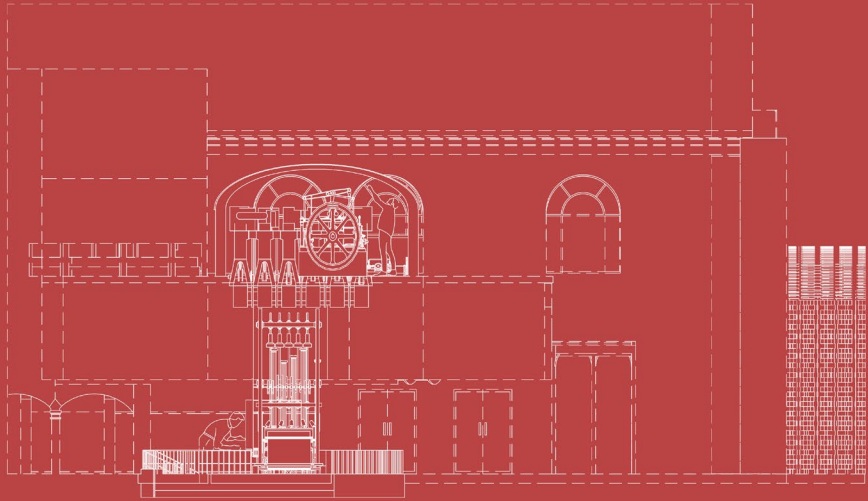


STORYBOARD:

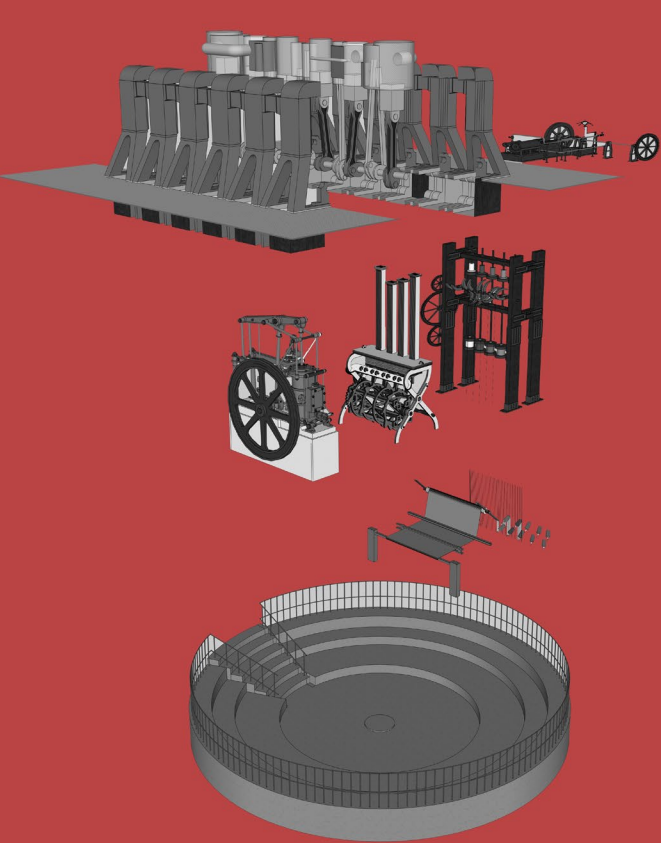


Users are invited to donate pre-loved clothes, share stories, and collaborate. The spaces support hands-on learning and skill-sharing: sorting fabrics, designing patterns, and sewing new items. Through this, clothing is not just recycled but emotionally revalued, turning forgotten pieces into personalized creations.

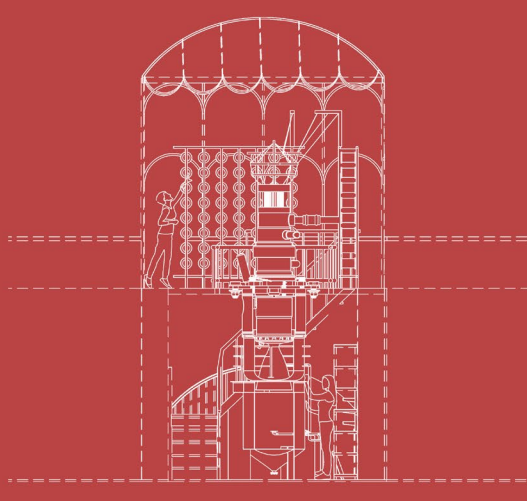
DEVICE PROPOSAL:



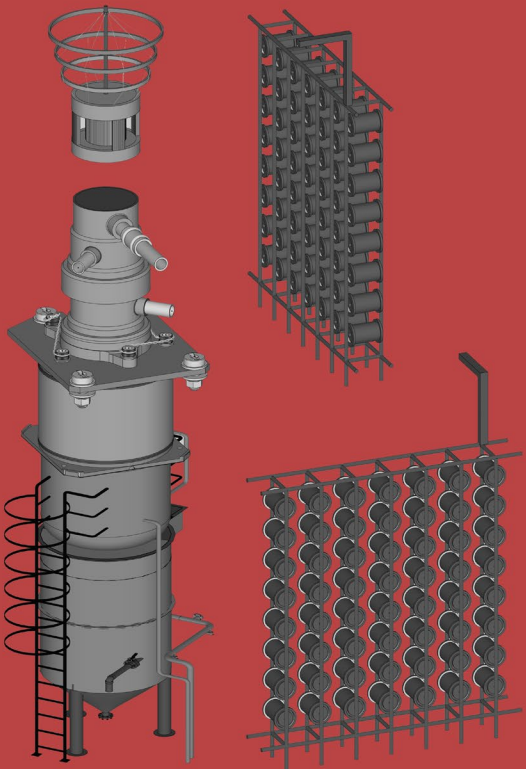
WEAVING CIRCLE



A circular stepped structure forms the foundation of the Weaving Circle, creating an open, inclusive environment where visitors can sit, observe, and participate in the textile-making process.



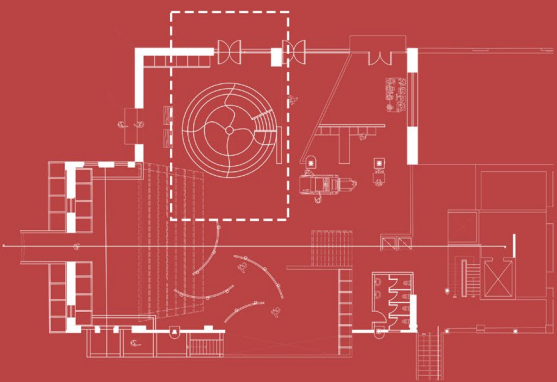
SYNTHESIS HUB



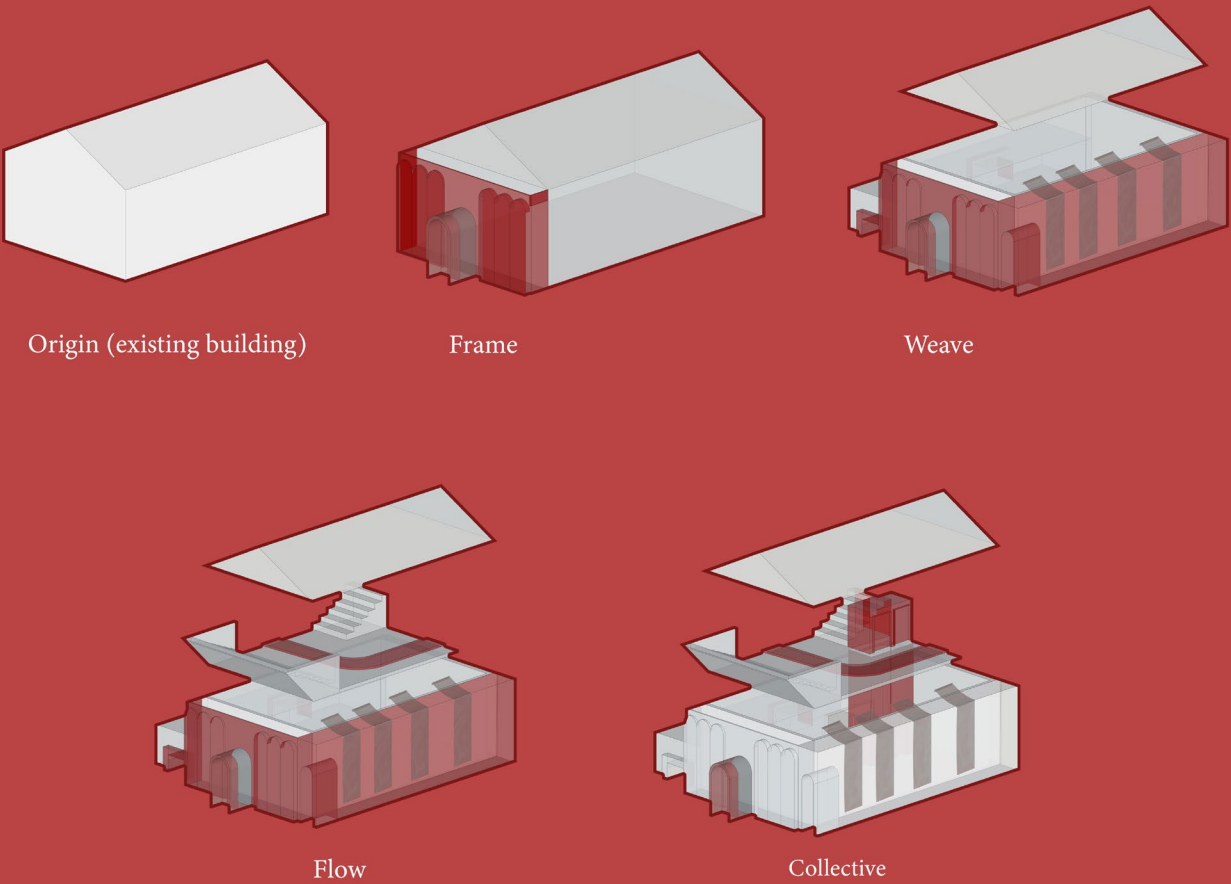
The device features a futuristic cylindrical core unit, surrounded by an array of thread spools that feed into a central processing chamber, where threads are gathered, manipulated, and prepared for weaving or further textile transformation.

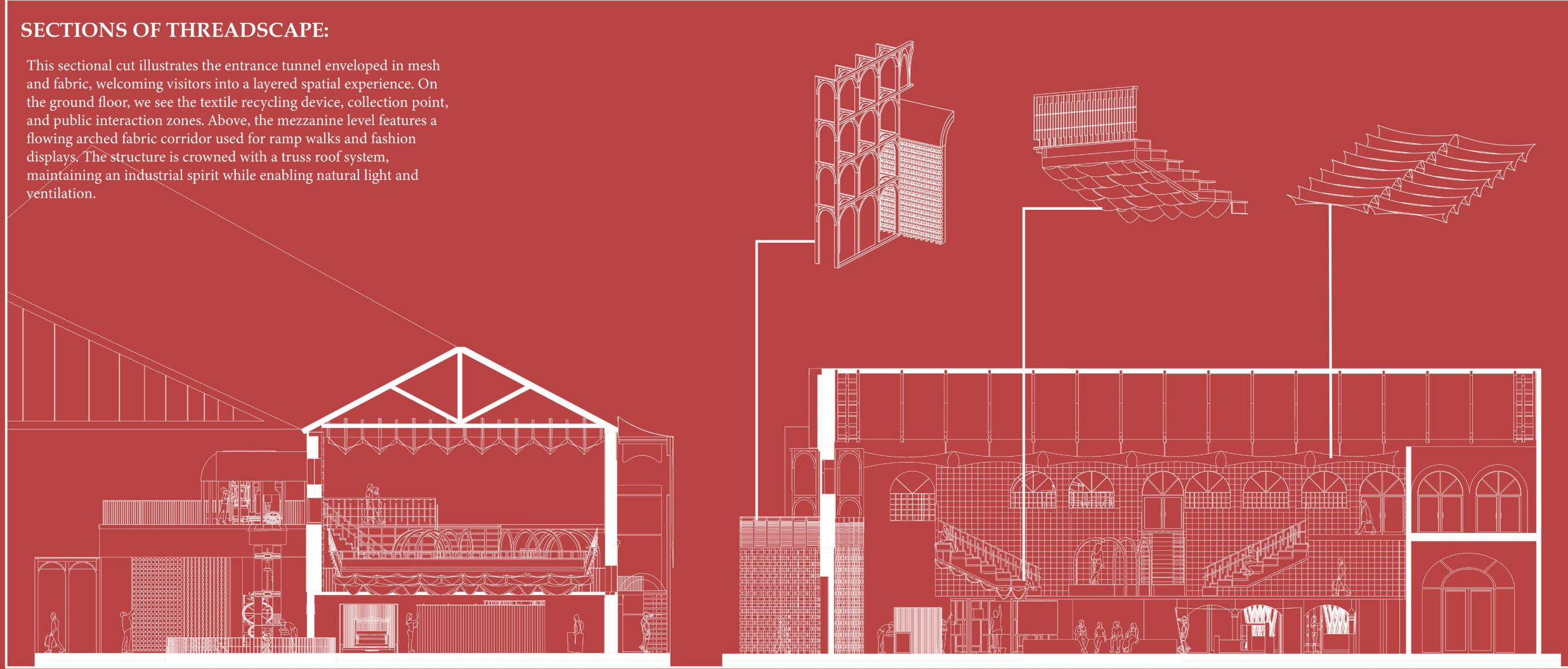
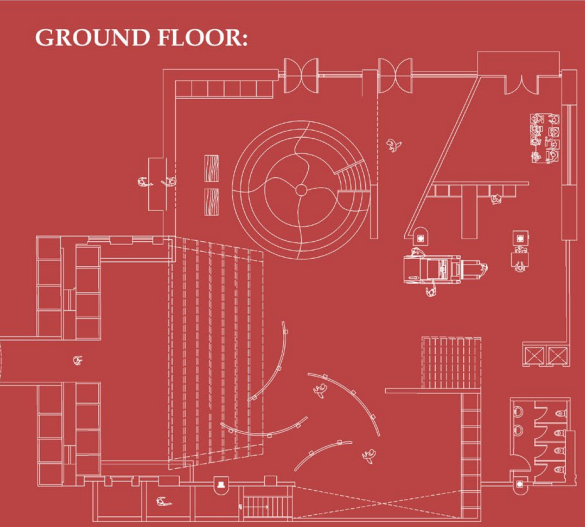
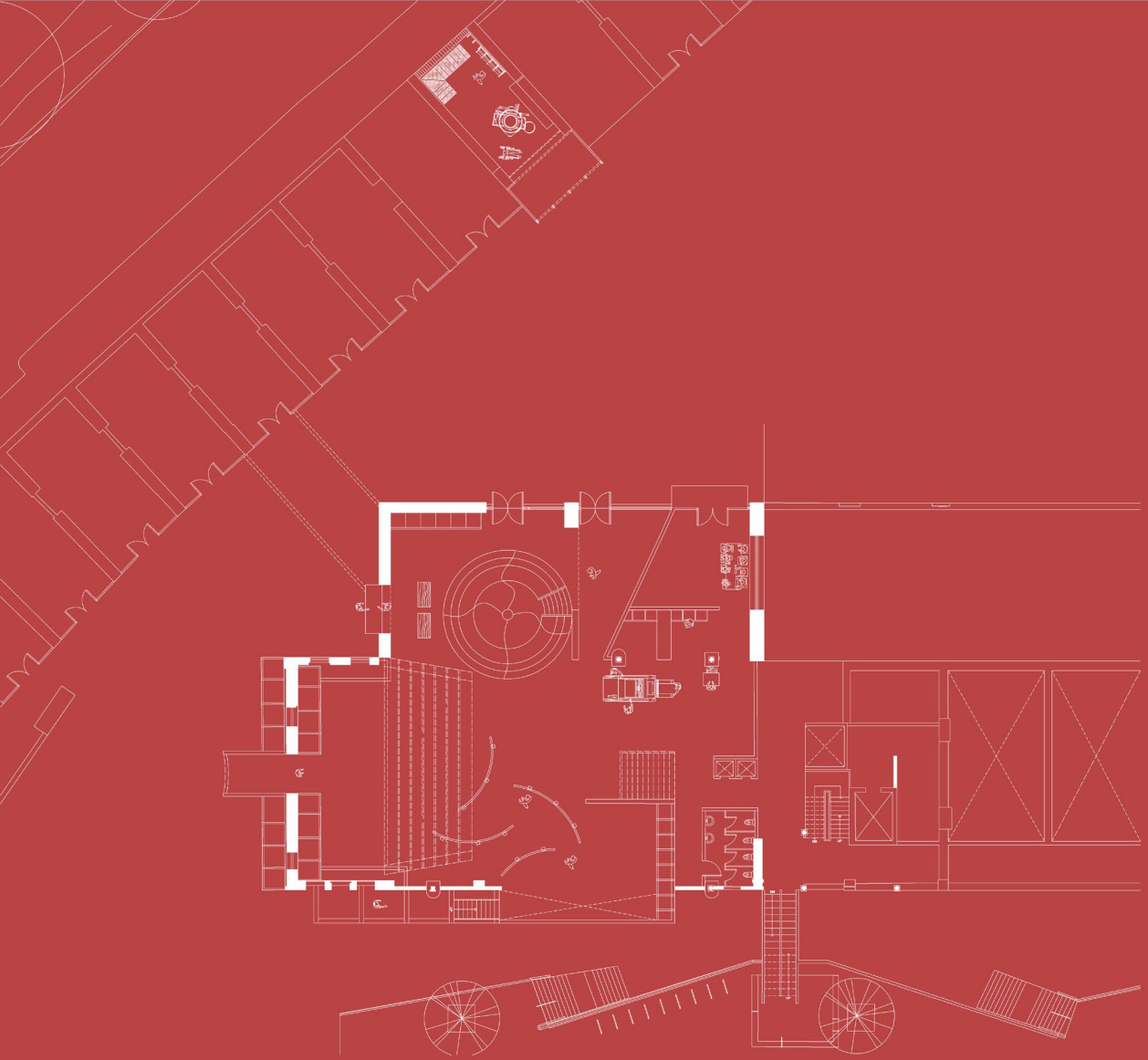
THE FACADE:

The facade of THREADSCAPE is composed of a lightweight mesh structure interwoven with recycled fabric, chosen for its durability and resilience in all weather conditions. This breathable skin wraps around the building, creating a soft yet defined corridor that guides visitors inside.



SEQUENTIAL DIAGRAM:





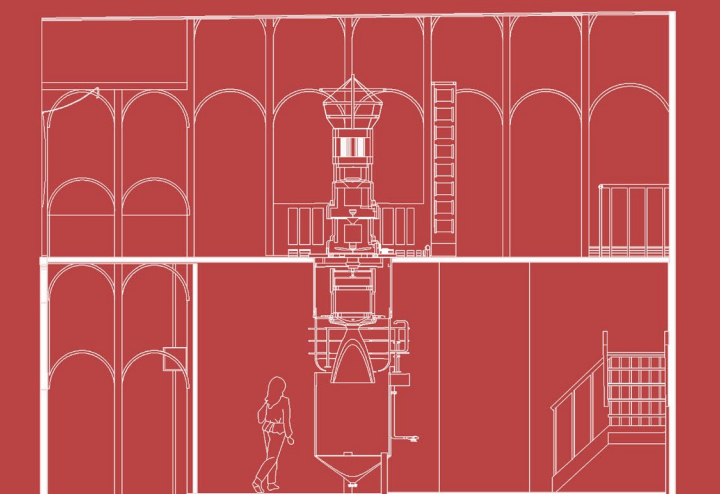
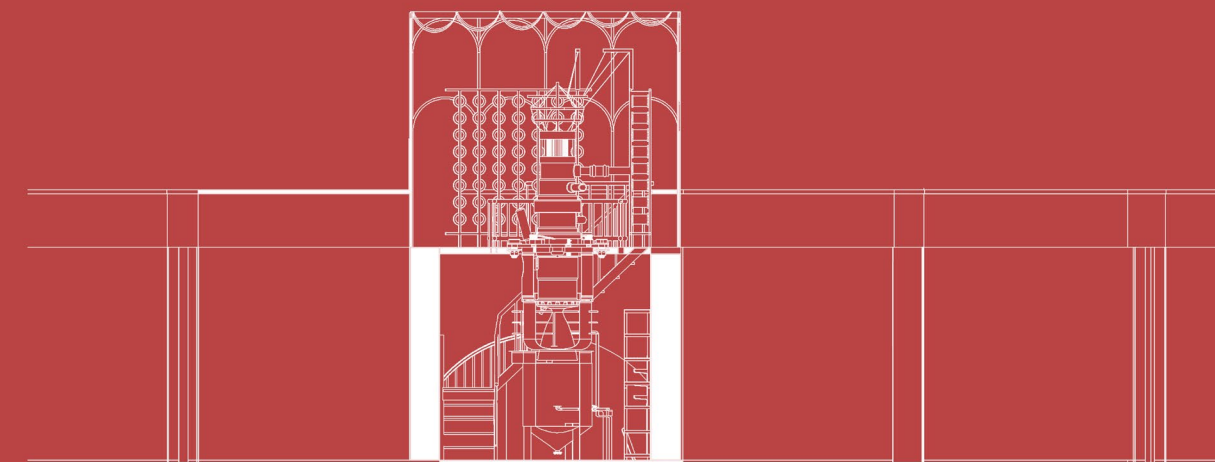
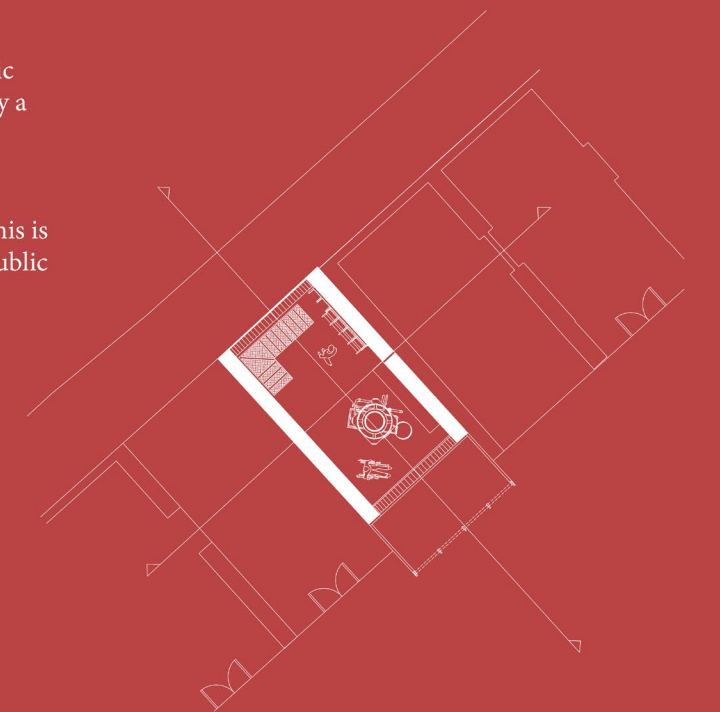
HERO SECTION:



THREADPOINT(ARCH SATELLITE SPACE):

These sections reveals a layered entrance experience beginning with a mesh and recycled fabric roof, which filters light gently through the structure. This semi-permeable canopy, protected by a glass enclosure, creates a soft threshold that blurs the boundary between inside and outside.

Upon entering, visitors are immediately engaged by the presence of the recycling device — a dynamic tool designed for quick fabric pattern creation and material processing. Adjacent to this is the collection point, where finished or repurposed textiles are stored and made available for public use, reinforcing the idea of shared resources and circularity.



VIEWS OF THREADSCAPE:



ENTRANCE SPACE ON EAST SIDE



DEVICE INSIDE THE THREADSCAPE



DEVICE INSIDE THE ARCH SPACE



ENTRANCE SPACE ON EAST SIDE

AXONOMETRIC DIAGRAM OF ARCH AND THREADSCAPE:

ARCH:

- 1 Entrance space for collection hub
- 2 Storage for textile stuff
- 3 Stairs
- 4 Balustrade
- 5 Device forming clothes
- 6 Terrace and front facade connected
- 7 Roof made of fabric and glass

THREADSCAPE:

- 1 Facade with mesh structure covered with recycled fabric
- 2 Entrance for exhibition and stairs towards fashion show hub
- 3 Textile recycling and exchange point
- 4 Standing point to observe fabric slit
- 5 Exhibition
- 6 Device
- 7 Toilets
- 8 Lifts
- 9 Fashion show and workshop hub
- 10 Dressing room
- 11 Terrace
- 12 Roofing made of recycled fabric

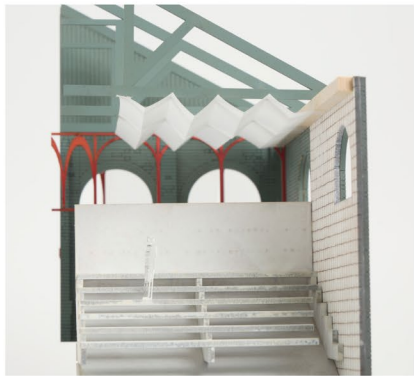
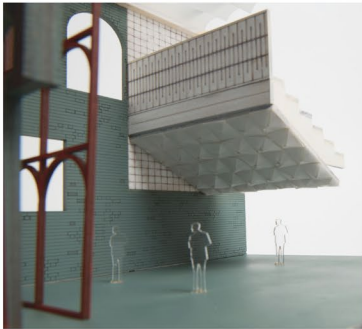
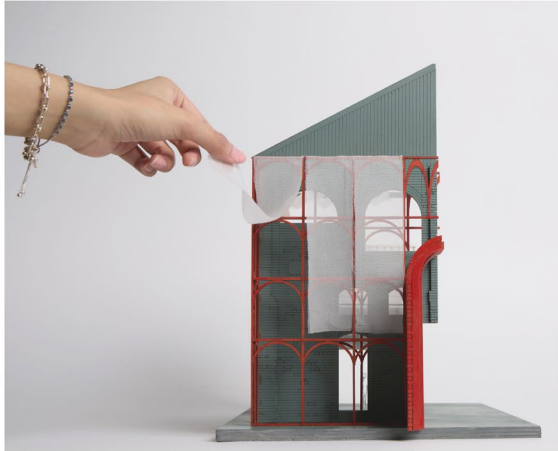
My project supports sustainable development by combining learning, community, and fashion in a meaningful way. Through hands-on workshops, people of all ages can learn upcycling, sewing, and sustainable design skills, making education accessible and creative (SDG 4). By reusing an existing building and turning it into an inclusive, multi-entrance fashion hub, I'm encouraging public interaction and preserving architectural heritage (SDG 11). The core idea revolves around fabric collection, recycling, and textile exchange, helping people rethink waste as a valuable resource (SDG 12). And with features like a breathable mesh façade made from recycled fabric and a focus on low-impact, local production, the entire space promotes climate-conscious fashion practices (SDG 13).



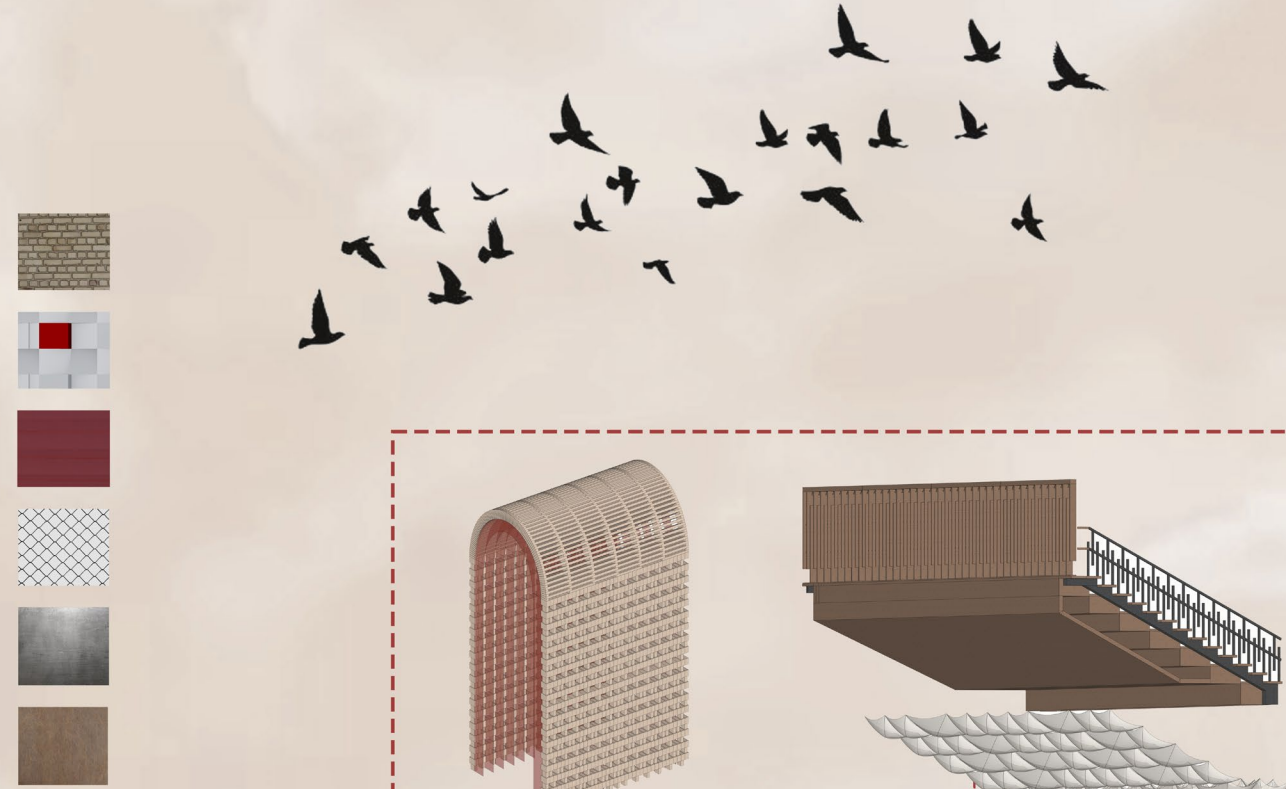
INNER VIEWS OF THREADSCAPE:



SECTIONAL MODEL 1:50:



HERO SECTION AND MATERIAL DETAILS:



This longitudinal section emphasizes movement and interaction across levels, with wide staircases connecting the ground to the mezzanine and upper floors. The central volume highlights the fabric exchange and exhibition zones, while the mezzanine hosts a fashion ramp walk, seating area, and open viewing galleries. Modular elements like curved timber structures, textile hangings, and red accented walls create a rhythmic narrative of circular fashion and public engagement.

- 1 Exposed Brick (Original Shell)
- 2 Fabric Panels (Red & White Squares on Interior Wall)
- 3 Recycled Fabric
- 4 Metal Mesh (Facade & Vertical Structure)
- 5 Steel for railing
- 6 Light Timber (Ramp Walk & Mezzanine Arches)

