

BOAT REPAIR HAUS



Introduction

In brief, my intervention involves proposing a project that offers boat repair services and carpentry installations tailored specifically for narrowboats along the Regents Canal. Moreover, the project aims to address the needs of canal boat communities by providing temporary living accommodations equipped with luxury bathrooms and kitchens. Moving forward, I intend to expand upon this idea by exploring key areas such as sustainable materials, efficient space utilization, and community engagement initiatives.

Through adaptation and reshaping, I aim to create a comprehensive solution that not only meets the practical needs of the community but also enhances their overall quality of life on the waterways. To embrace innovation and sustainability principles in all aspects of this project, from materials sourcing and construction techniques to energy efficiency and waste reduction measures. Explore innovative technologies, green building practices, and circular economy models to minimize environmental impact and maximize resource efficiency.

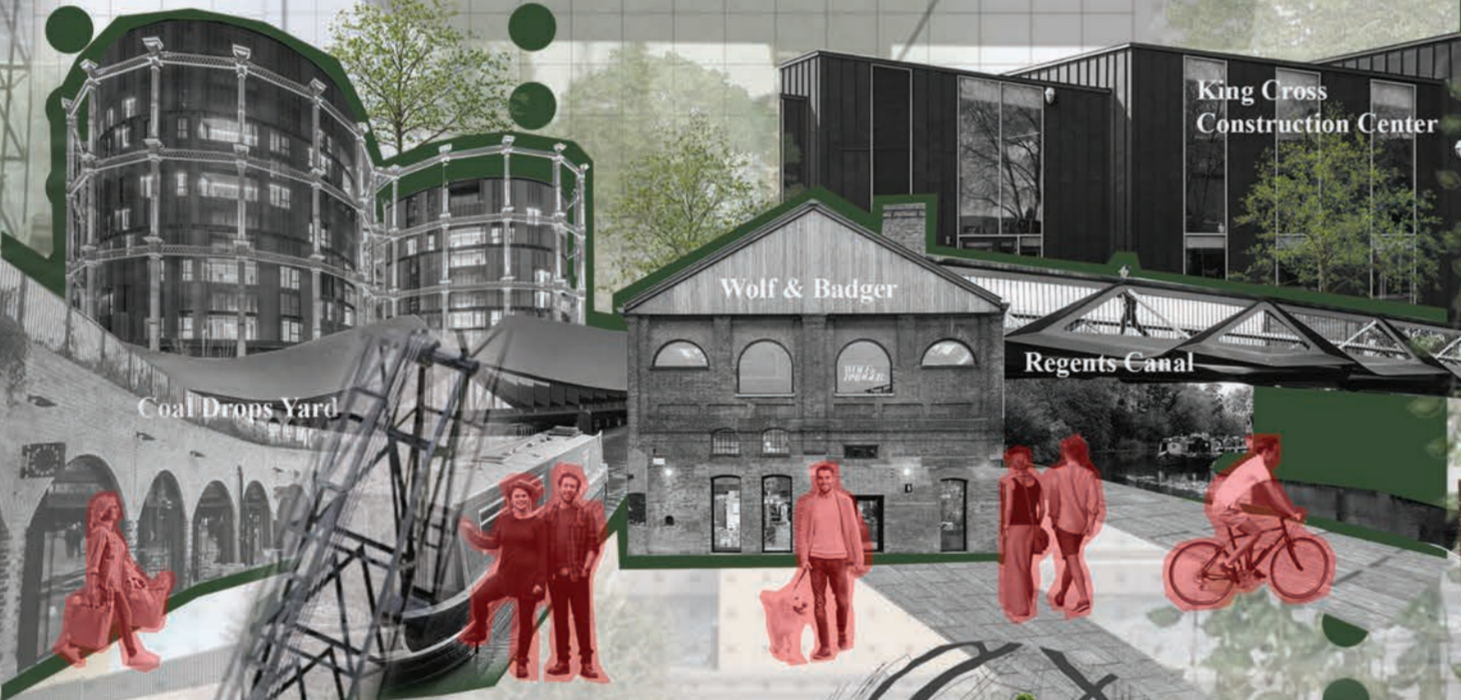


A sanctuary for canal residents, offering both repair services and temporary housing. The title emphasizes sustainability and community well-being, promoting resilience and inclusivity in a unique waterfront environment.

Description

A canal boat repair house complemented by essential facilities like a café, convenience store, pharmacy, and laundrette, reimagines communal spaces to address contemporary societal needs. By transforming familiar environments into multifunctional hubs, we respond to economic, social, and political shifts, fostering sustainable living and community resilience. This innovative approach not only revitalizes local economies but also creates inclusive, adaptable spaces that meet diverse community needs, from housing and workspaces to health and learning environments, ensuring a dynamic and supportive future for canal communities.

Canal boat communities in London may face challenges in accessing facilities such as boat repair workshops, groceries, post offices, and other amenities. While some services are available nearby, they may not be as numerous or easily accessible as in traditional neighborhoods. Residents may need to travel some distance to find these facilities, relying on shared transport or co-operative arrangements. Despite these challenges, many residents embrace the unique lifestyle offered by canal living, balancing the tranquility of the waterways with the need to access essential services elsewhere in the city.



The visual representation provided aims to vividly illustrate the profound impact of the design element on the surrounding environment. Within this depiction, a prominently featured large pipe is depicted, serving as a conduit to drain water from the elevated water tank situated on the first floor directly to the ground floor below.

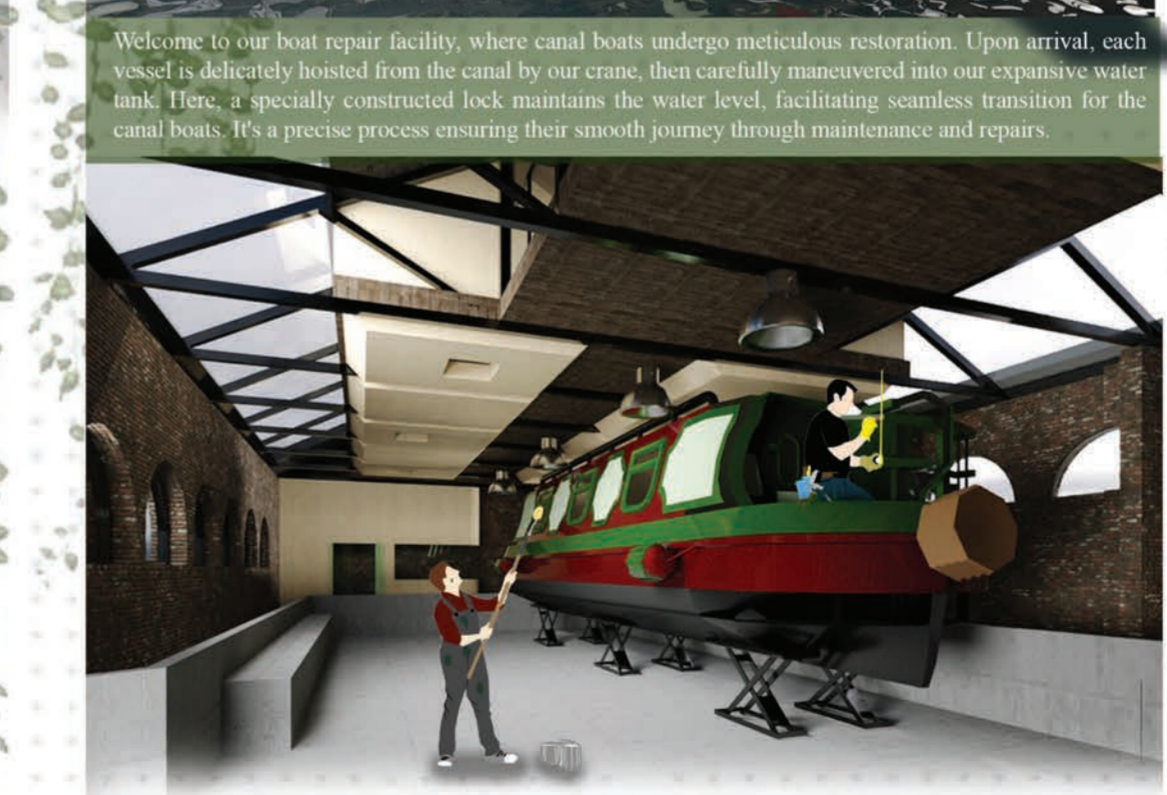
This architectural feature not only serves a functional purpose but also symbolizes a disruptive force within the environment, altering the natural flow of water. Moreover, the presence of a designated drain, strategically positioned to facilitate the return of water to the nearby canal, further emphasizes the engineered intervention and its intricate relationship with the surrounding ecosystem.



The blue highlighted area represents the Regent's Canal, a central focus of my project. In my endeavor to grasp the essence of the distinctive lifestyle along these historic waterways, I embarked on an immersive journey. Through extensive photography capturing the charm of canal boats and their picturesque surroundings, I delved deep into understanding the vibrant communities that thrive along the banks. Venturing into the heart of canal life, I sought to unravel the intricate web of daily routines, social dynamics, and shared experiences. From documenting the intricacies of boat design to conversing with residents about their way of life, every moment offered a glimpse into a captivating world. Exploring how these communities ingeniously access resources and sustain their livelihoods amidst the tranquil waters has been not just a research endeavor but a deeply enriching experience.



Welcome to our boat repair facility, where canal boats undergo meticulous restoration. Upon arrival, each vessel is delicately hoisted from the canal by our crane, then carefully maneuvered into our expansive water tank. Here, a specially constructed lock maintains the water level, facilitating seamless transition for the canal boats. It's a precise process ensuring their smooth journey through maintenance and repairs.

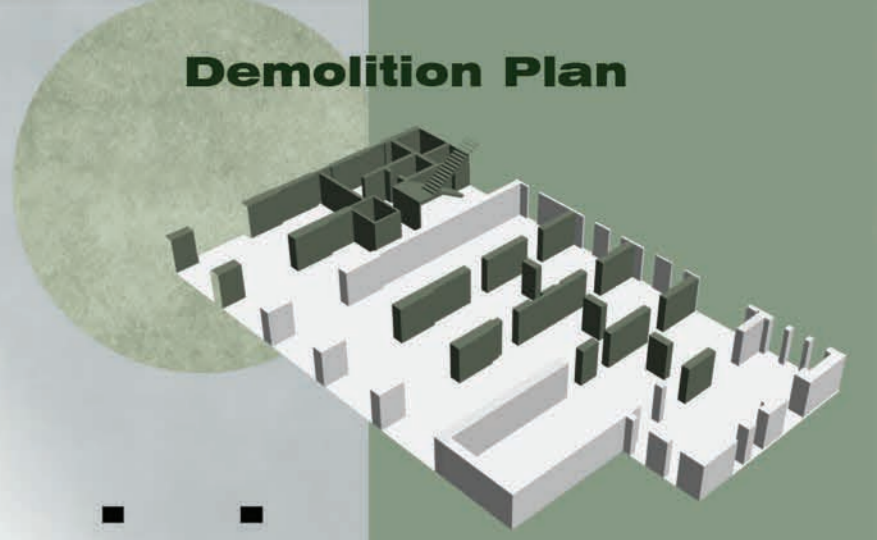
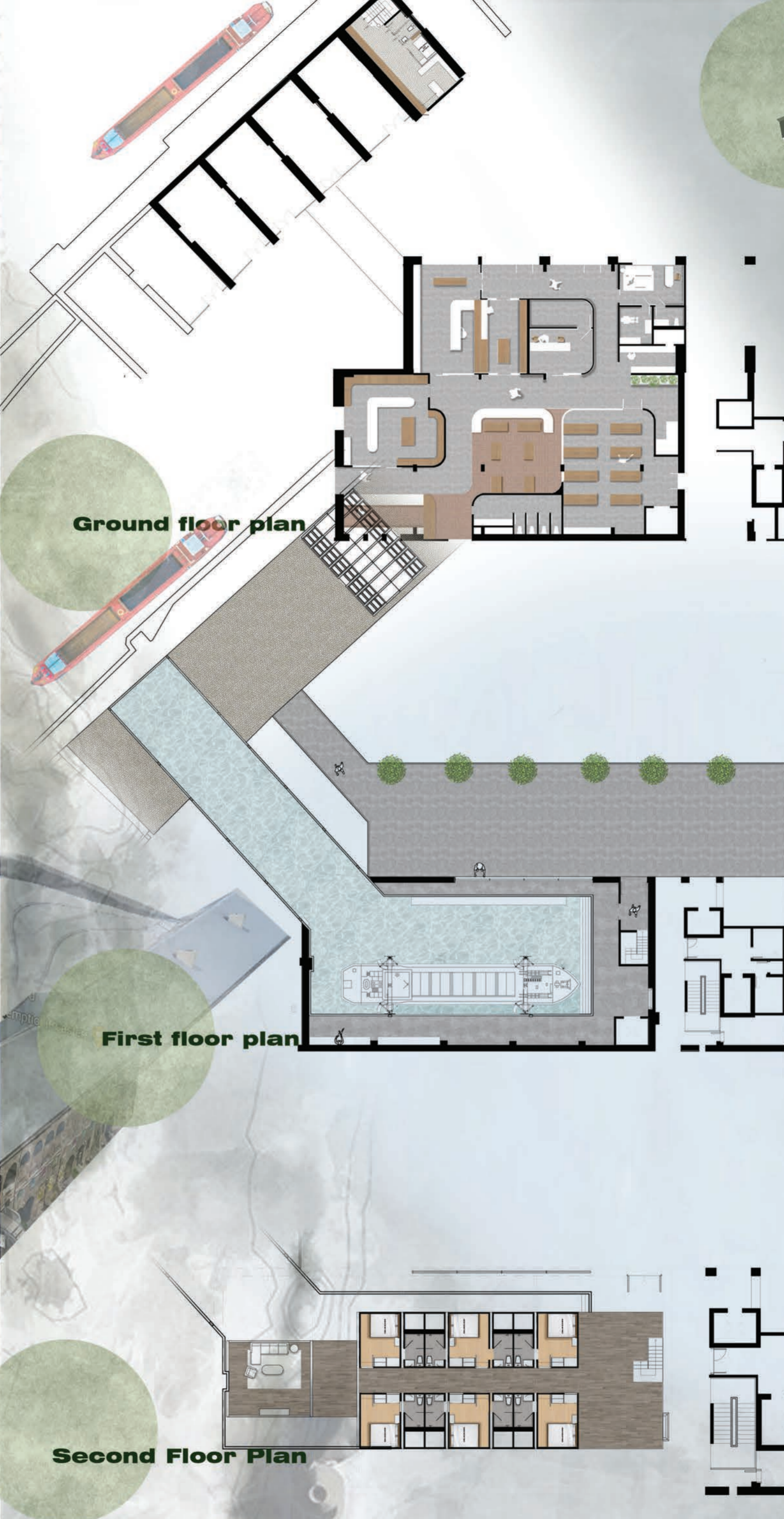
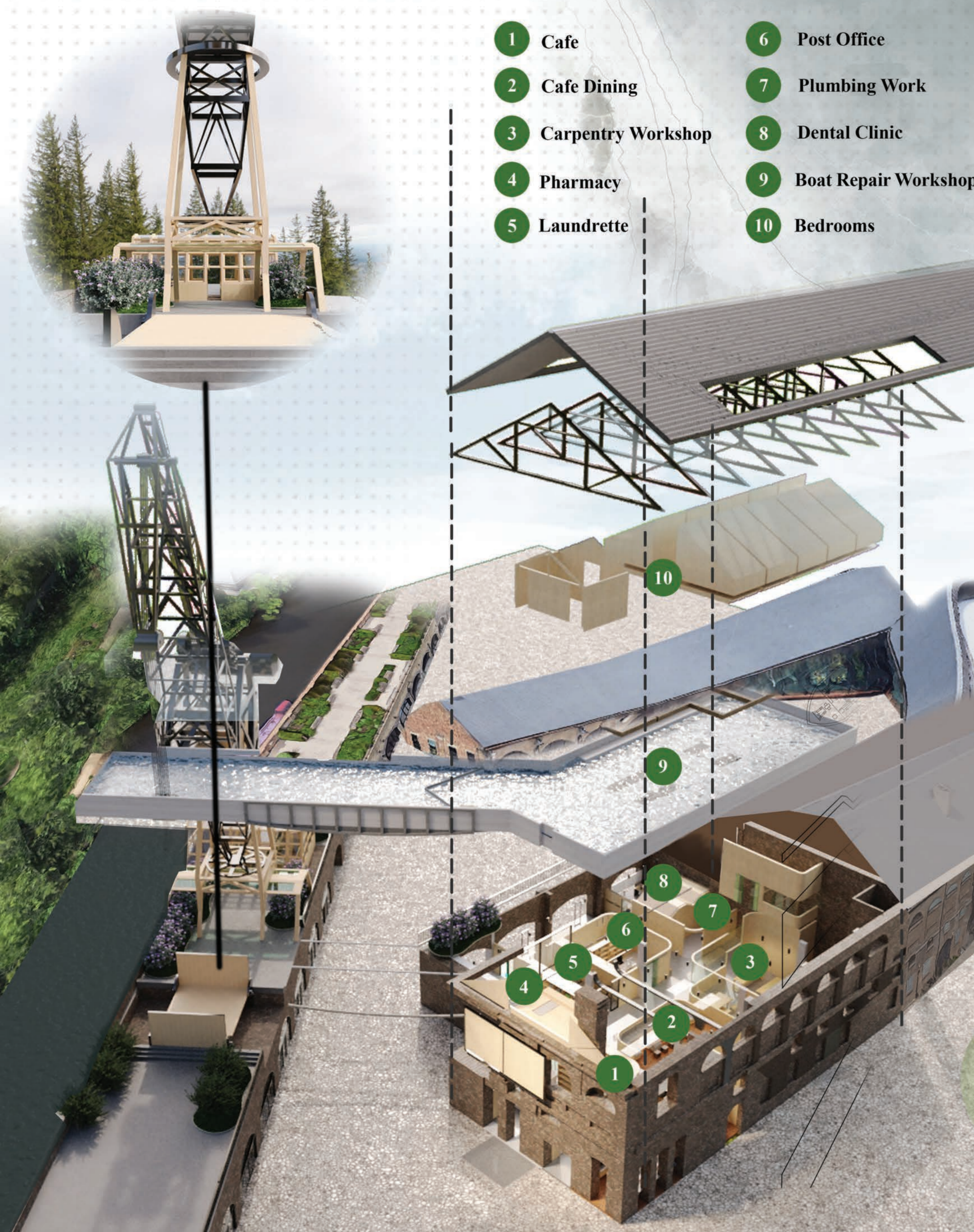


This visual offers a fascinating glimpse into the intricate process of boat repair, showcasing how carpenters skillfully ply their craft as the water recedes from the vessel. As the water level drops, a sturdy concrete worktop emerges, providing carpenters with a stable platform to arrange their tools and equipment, ensuring precision in every repair. For curious onlookers passing by, a convenient back entrance beckons, granting access to comfortable benches strategically placed for an optimal view of the carpenters' meticulous workmanship. It's an immersive experience where spectators can witness firsthand the artistry and dedication behind each restoration.

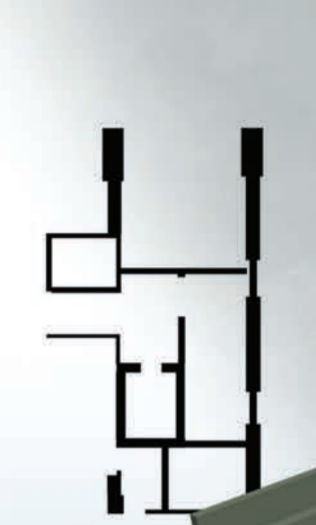




- 1 Cafe
- 2 Cafe Dining
- 3 Carpentry Workshop
- 4 Pharmacy
- 5 Laundrette
- 6 Post Office
- 7 Plumbing Work
- 8 Dental Clinic
- 9 Boat Repair Workshop
- 10 Bedrooms

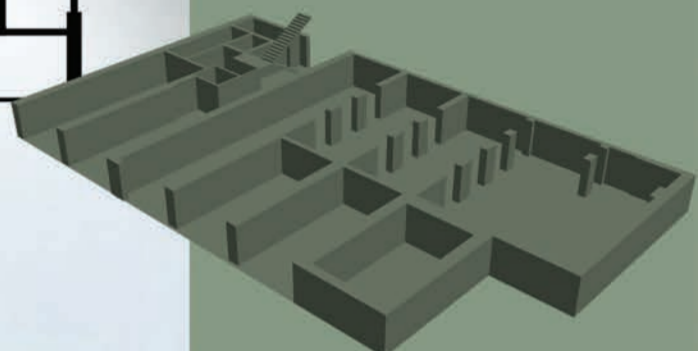


Demolition Plan



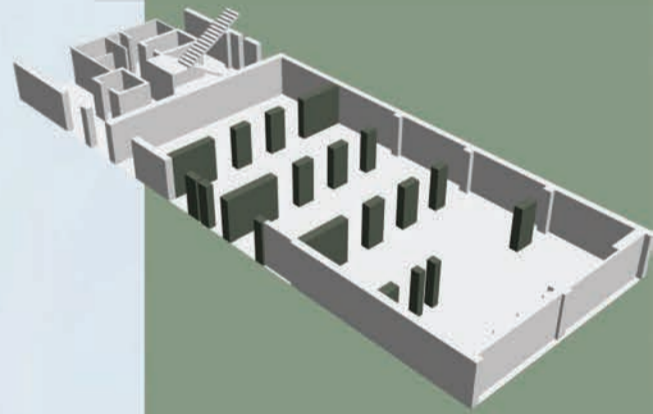
Ground Floor

The ground floor underwent a substantial transformation as walls were essentially removed to create additional space. While the entrance door retained its original position, the majority of windows were slated for demolition and reconstruction.



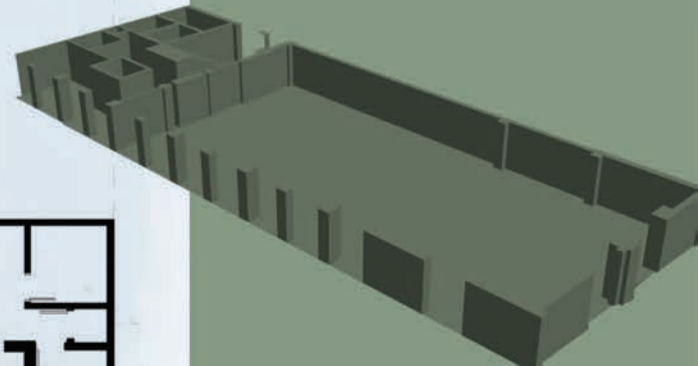
Mezzanine

The entire mezzanine floor was dismantled owing to its excessively low ceiling height. Consequently, erecting the proposed structure on this level poses significant challenges.



Viaduct

All walls surrounding the columns have been removed, save for those directly abutting the existing columns. This area stands as the pivotal focal point of the entire project, carrying paramount importance in its development.



Upper Viaduct

The upper viaduct floor was demolished to accommodate the need for additional space to create rooms.



Second Floor Plan



Cafe

The café holds a pivotal position within this project, serving not only as a social hub but also as a practical co-kitchen for temporary canal community residents. Strategically positioned near the entrance, it offers a space for community members to gather and unwind.

The design of the elevated working counter embodies the concept of floating, mirroring the canal boats' graceful presence on the water. Additionally, LED light strips beneath the counter not only illuminate the brick flooring but also delineate the space, enhancing its distinctiveness within the building.



Pharmacy

The pharmacy serves a vital role in aiding canal boat communities by providing convenient access to prescriptions. Given their lifestyle on the waterways, accessing medical facilities is often challenging for these communities. Moreover, residents in the King's Cross area also benefit from the pharmacy's services, catering to a broader demographic beyond just canal dwellers. The carpentry throughout this pharmacy predominantly features plywood, complemented by marble countertops and carefully chosen veneer wood grain, all harmonizing to create a cohesive ambiance.



Convenient Store

Adjacent to the café, a convenient store provides essential daily necessities and groceries for the community's convenience. The store's layout features smooth, curved edges, facilitating ease of movement for shoppers pushing carts.

Custom-made plywood display shelves add to the store's unique character and functionality. Residents of the building can effortlessly purchase groceries from the store and then utilize the nearby café space to prepare their meals, fostering a seamless and integrated living experience.



Material Board

The most use material in this project is plywood. Plywood is favored for carpentry due to its strength, durability, and uniformity. It resists warping and shrinking, making it stable in various environments. Additionally, plywood is cost-effective and versatile, easily shaped to suit different projects. Its attributes make it ideal for carpentry, furniture making, and cabinetry.

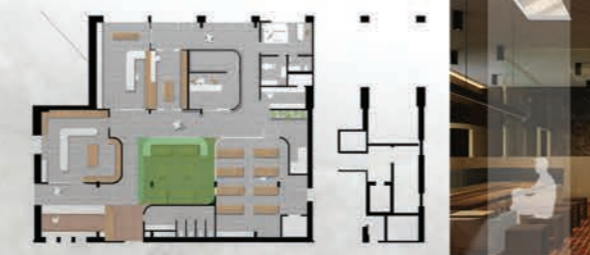
The decision to utilize marble tops extends beyond mere aesthetics; it also serves a functional purpose. Marble's inherent solidity surpasses that of typical wood worktops, offering enhanced durability and longevity. Additionally, marble surfaces are easier to maintain, contributing to the practicality and efficiency of the workspace.



Cafe Dining

The café dining area serves as a vibrant social hub, where canal boat communities can gather, mingle, and forge new connections with those residing on land. Beyond just repairing boats, this project aims to bridge communities and foster inclusivity.

Notably, glass panels installed on the ceiling offer more than just a glimpse into boat repairs; they provide an immersive experience, allowing customers below to witness the activity on the top floor. This design choice reflects a desire not only to showcase the repair process but also to offer diverse perspectives and insights, enriching the overall community experience.





Carpentry Workshop

The workshop serves as the heart of this building, where essential components like kitchen countertops, wardrobes, and bed frames are meticulously crafted for installation in canal boats. Conveniently located just behind the workshop is an elevator, providing easy access for carpenters to transport broken boat parts to the first floor. Within the workshop, fully equipped with working tables and machinery, community members have the opportunity to engage in hands-on workshops, learning the art of furniture making. On the workshop's right side, a vast glass partition offers a captivating view into the workspace, allowing café diners to observe the craftsmanship while enjoying their meals. This seamless integration of spaces exemplifies the interconnectedness and dynamic engagement within the building.



Post Office

The post office serves as a crucial facility for the canal communities, providing a centralized location for the collection and storage of parcels and mail intended for them. Given the unique challenge of not having fixed addresses, the post office plays a pivotal role in ensuring that residents receive their mail in a timely manner. Beyond merely receiving mail, community members can also utilize the post office to send out parcels, further solidifying its importance as a vital resource. In many ways, the post office serves as a lifeline for the canal communities, offering them a sense of connection and belonging in a world where traditional addresses may not apply. It becomes more than just a place for mail; it becomes a second home, a cornerstone of community life where bonds are strengthened and support is readily available.



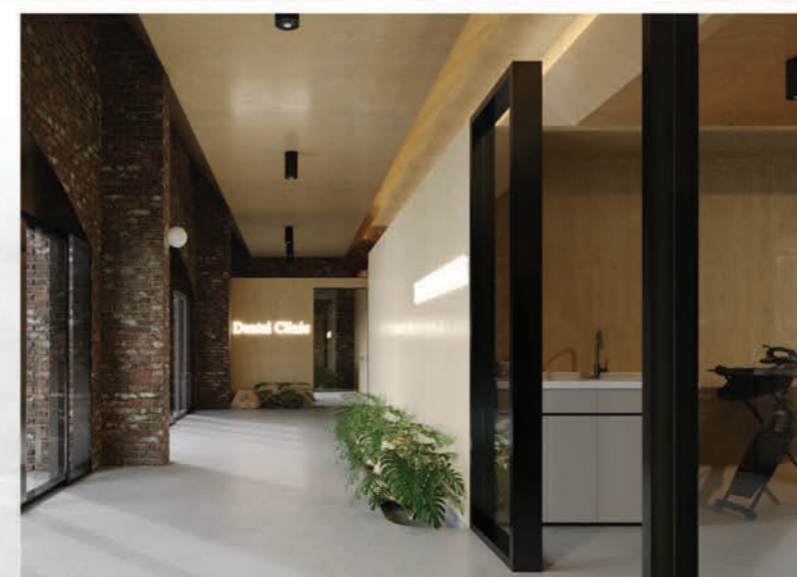
Laundrette

The laundrette is a convenient amenity available to the communities at any time, offering a hassle-free solution for washing clothes. Equipped with essential utilities such as washing machines, dryers, and ironing boards, it caters to the needs of canal dwellers, ensuring they can easily access and utilize these facilities. With ample space provided, navigating the laundrette is effortless, allowing community members to move around comfortably while tending to their laundry needs.



Dental Clinic

In addition to its other amenities, this building houses a much-needed dental clinic, catering not only to the surrounding communities but also to the canal dwellers. The presence of this clinic serves as a significant boon, particularly for the canal communities, who often face challenges in accessing essential healthcare services while living on the waterways. With the provision of a dental clinic on-site, residents can now seek professional dental care without the logistical difficulties associated with their unique living arrangements. This inclusive approach to healthcare underscores the building's commitment to addressing the diverse needs of its residents, regardless of their circumstances. By bringing essential services like dental care directly to the community, this building serves as a beacon of accessibility and support, enriching the lives of all who call it home.



Balcony

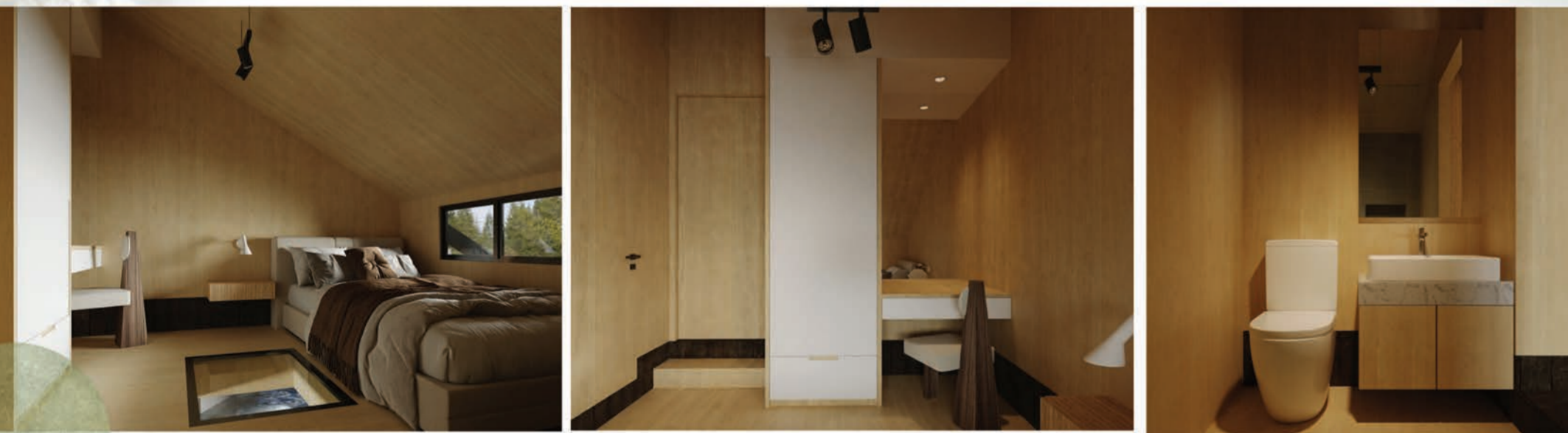
Moreover, a generously sized balcony is available, serving as a serene relaxation spot where residents can partake in various activities such as board games, yoga sessions, or simply enjoy casual conversations. This outdoor retreat offers a peaceful escape from the indoors, allowing individuals to bask in the natural surroundings while fostering community bonding and well-being.



Section X-X



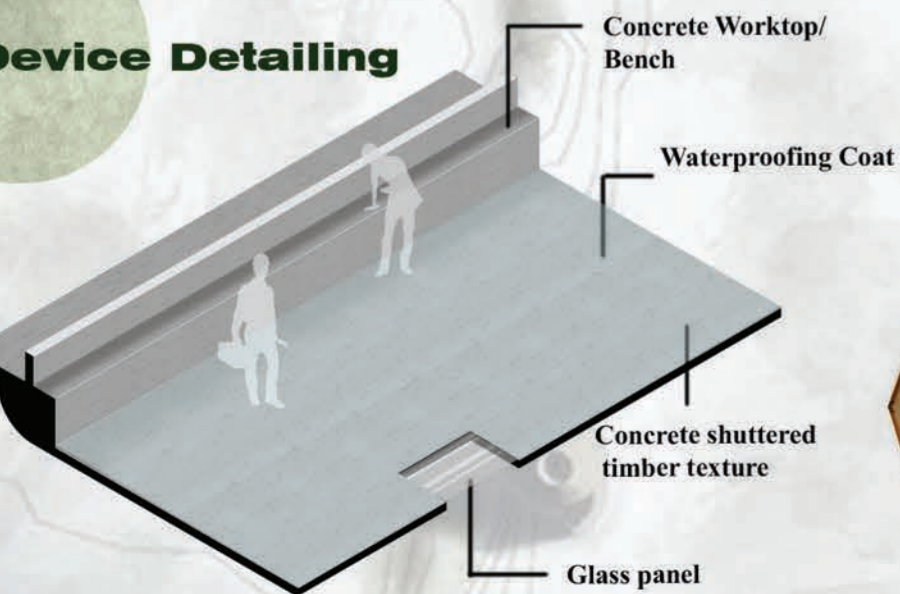
Accommodation



This accommodation is thoughtfully designed to cater to the needs of canal communities whose boats require repair. Recognizing the temporary nature of their stay during the fixing process, each member of the canal community is provided with a comfortable and welcoming room. These rooms are meticulously cleaned and feature fully furnished interiors complete with cozy beds and well-appointed bathrooms, offering a sanctuary for relaxation and rejuvenation. Notably, the inclusion of glass panels in the rooms provides a unique feature, allowing occupants to observe the activity on the first floor while maintaining a sense of connection to the repair process. Moreover, these glass panels are equipped with privacy mode functionality, ensuring that individuals can enjoy solitude and tranquility when desired. This attention to detail not only enhances the overall experience for canal community members but also underscores the commitment to providing them with a supportive and accommodating environment during their time of need.



Device Detailing



1:100 Model Making



Section Y-Y

