

Site Analysis\_  
Childs Hill Library  
320 Cricklewood Lane, London NW2 2QE

As you approach the site you'll notice the **mock tudor** style, the timbers at the front are there merely for decorations, giving it a certain appeal, a cottage feel.

When you walk into the building you're met with a **glazed screen** that immediately allows the user to anticipate where they're going as they can see ahead of themselves. It also forces you to walk left as the screen blocks you from walking ahead, **controlling the circulation**.

your **initial experience** as you walk into the building is that you'll feel quite claustrophobic and compressed due to the **low suspended ceilings**.



could make the ceiling at the entrance taller to open up the space and let natural light in through roof lights rather than using artificial lights



on the road it looked regular, didn't really stand out from the other buildings, as soon as I ~~passed~~ walked in the space immediately felt small as the ceilings were quite low and with the glass/wall right in front of the threshold made it feel a bit claustrophobic, forced me around to the left side. Two openings on each side leading into the main part of the library. The openings were redefining the double height higher height of the space as well as the sort of windows coming from the top allowing natural lighting means the space is brighter and require less artificial light during the day.

if this library used to have a spiral staircase which was used as a means for me where in secondary school our library had a spiral staircase that lead up to a room which I had no idea what was inside and I always wondered what was in there. so naturally I associated the spiral staircase with a library.



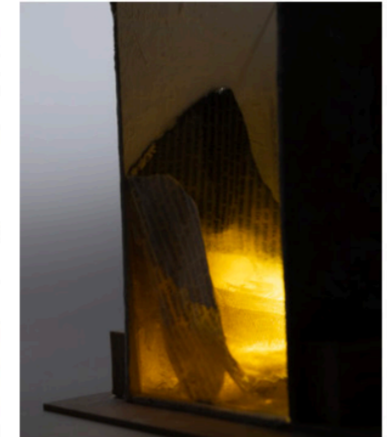
columns in the library space, to not only support the structure of the roof, but also to give the library a sense of history and character, but also to create a sense of mystery and intrigue.

these columns throughout the library space made of cast iron to support the structure of the roof, past these columns the ceiling is then brought down on both the left and right outer sides of the library

the structure of the walls are held by trusses, speculating that some are removed and replaced by steel trusses rather than timber as the building is relatively young.



chosen photographs for my atmospheric model:



These photos represent the atmosphere I want to create in the library.

The warmth from the yellow light passing through the resin gives a sense of comfort which is inviting people to a place of security. This subconsciously creates a feeling of trust.

Crafting and making the atmospheric model helped communicate the ambience and mood within the space that I wanted to create. Through experimentation using different materiality and testing how these little models worked with light, allowed for endless possibilities in creating different atmospheres leading to the final model which best conveyed the certain feeling an individual would experience inside the space. My project was driven by this model as it was the foundation to my design as it was something that would be referred back to throughout my designing and development stages.



i experimented with different materials in the workshops to create the atmosphere i want my space to emit

### Metal Workshop\_



the metal structures are representing the **protection** of the space and the space is supposed to be the workspace for the archivist in the process of preserving the materials it can also be **exposed** for people to be able to see it as well. You can see the archivist working up in the box but also giving them their **privacy** at the same time.

the fact the **protective cage is high up** it gives it the sense of an **observation tower** where someone is watching everything taking place within the space.

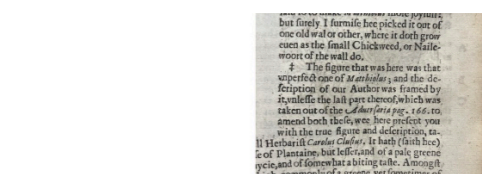
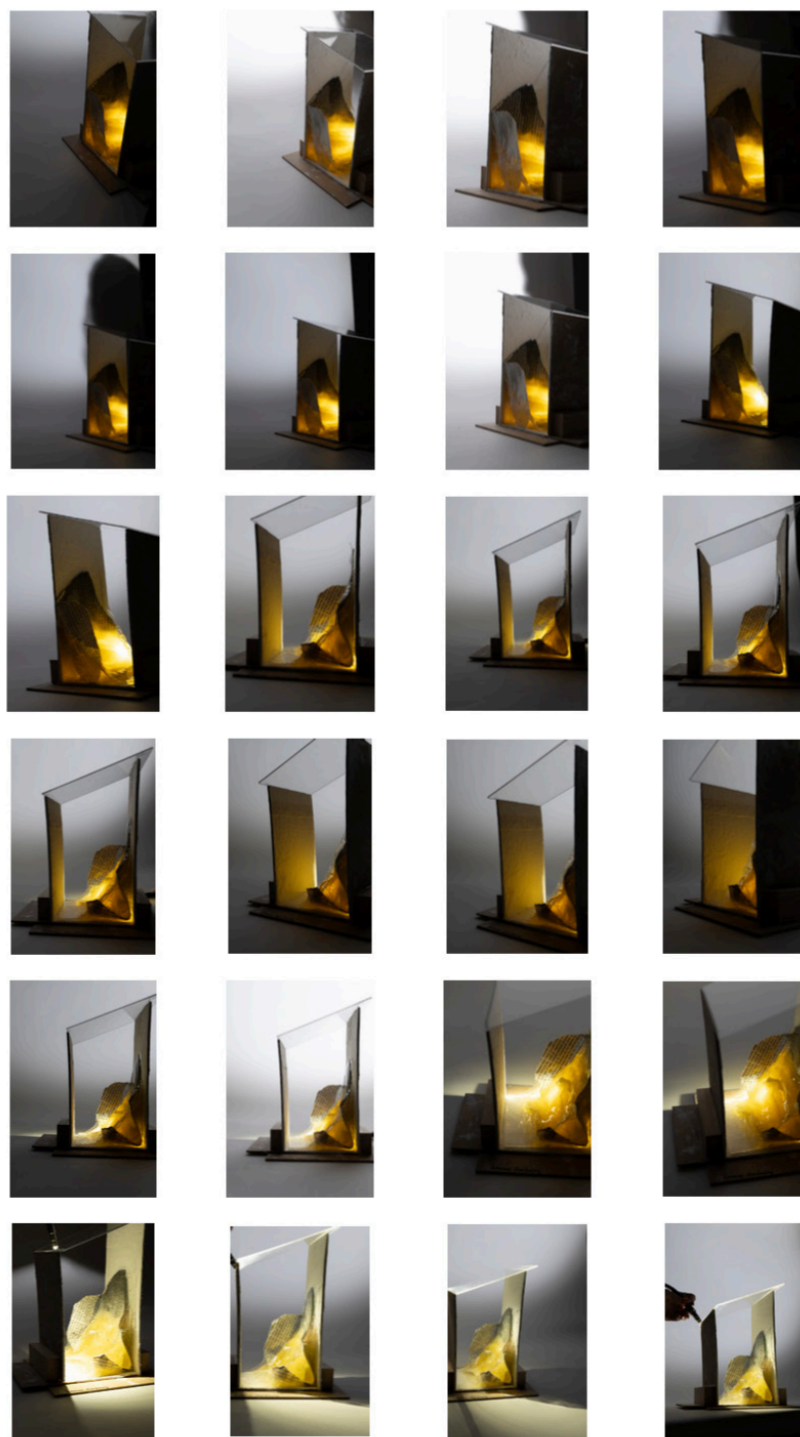


### Resin Workshop\_



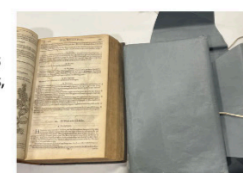
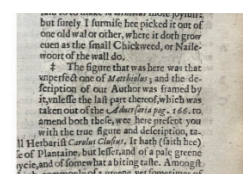
i used the resin to preserve the fabric, this idea came sparked from the preservation of flowers which is like **freezing** it in time so they don't change, rot or deteriorate. preserving the paint and the part of the newspaper meant that it wouldn't **change or deteriorate over time** due to the resin.

added dirt/sand into the resin which i then used the **shadows** of the dirt to create a different way the **light travels** through the space. i used all my experimental models to play with the **effect of lighting** through the space created by these models



the mx archive consisted of a variety of things that were collected and preserved such as clothes, magazines, newspapers, ancient books, maps, clothes, materials, documents and records.

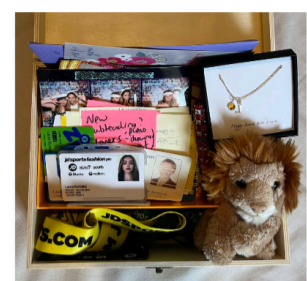
this helped me consider the things that could be archived within my design



how to make the archives personal to the community?

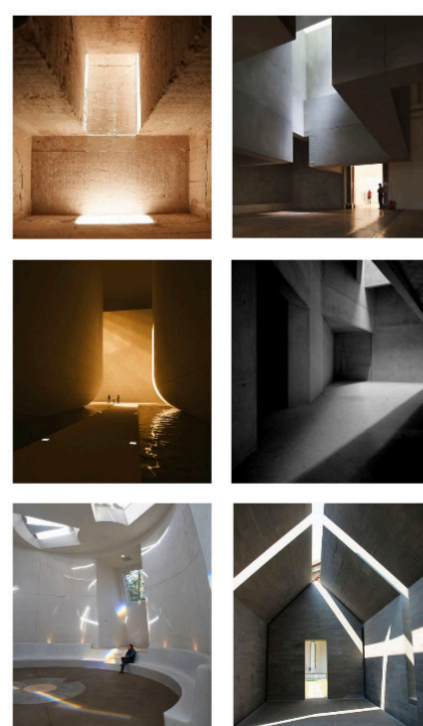
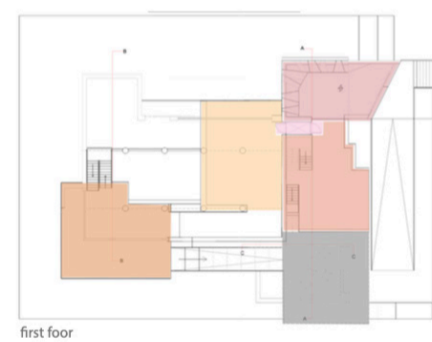
I asked people what things they would want to preserve and archive:

- teddy bear
- necklace
- first phone
- a tool from a tool box
- holiday tickets
- concert tickets
- school ID card
- empty perfume bottle
- keep safe box
- hair clip
- painting
- brushes
- glasses
- photo album
- scrap book
- medals
- troughs
- toys



i searched through some of my personal old items that i've kept over the years which have a meaning to me or trigger a certain memory from a certain point in my life. some things are as random as a post-it note with a message on it or a lanyard from a past school or workplace, but they are special to me as they mark a certain point in my life.

### Zonings\_



the atmosphere of an interior will affect a person's mood and well-being and it can also influence a certain emotion.

an effective atmosphere refers to mood, situation or sensory qualities of a space

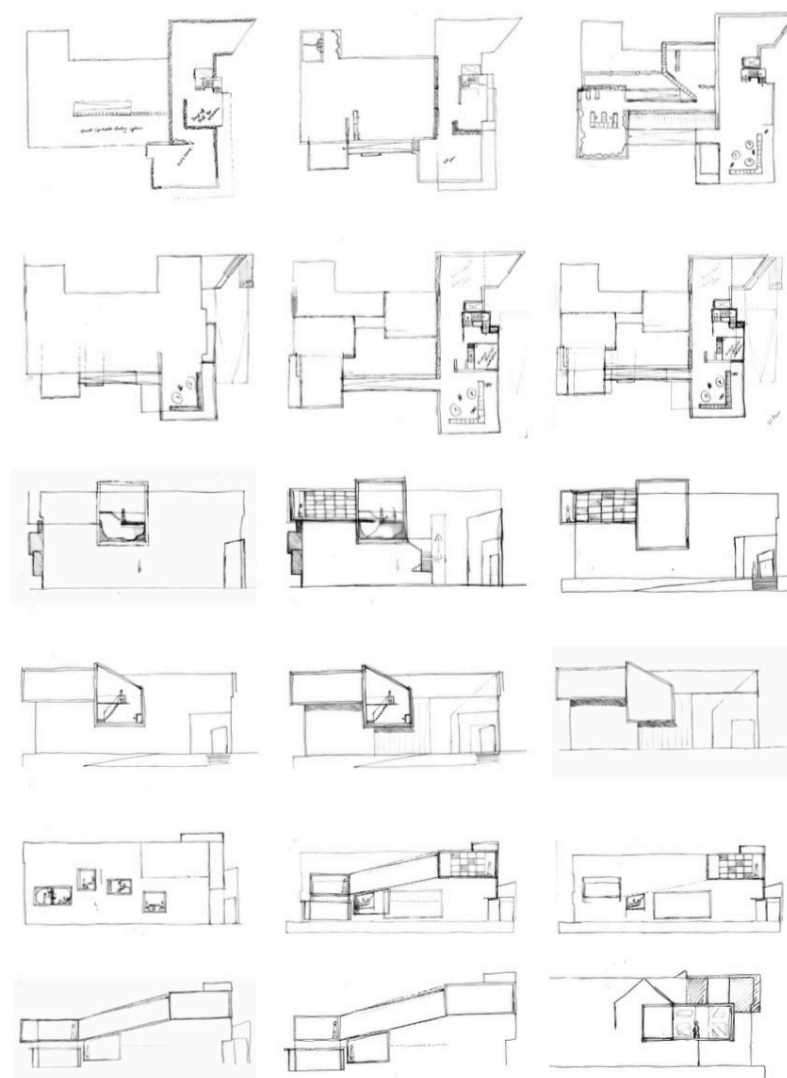
lighting has a huge impact on atmosphere and is used to create a specific atmospheric experience which can be enhanced through the use of **colour and materiality**

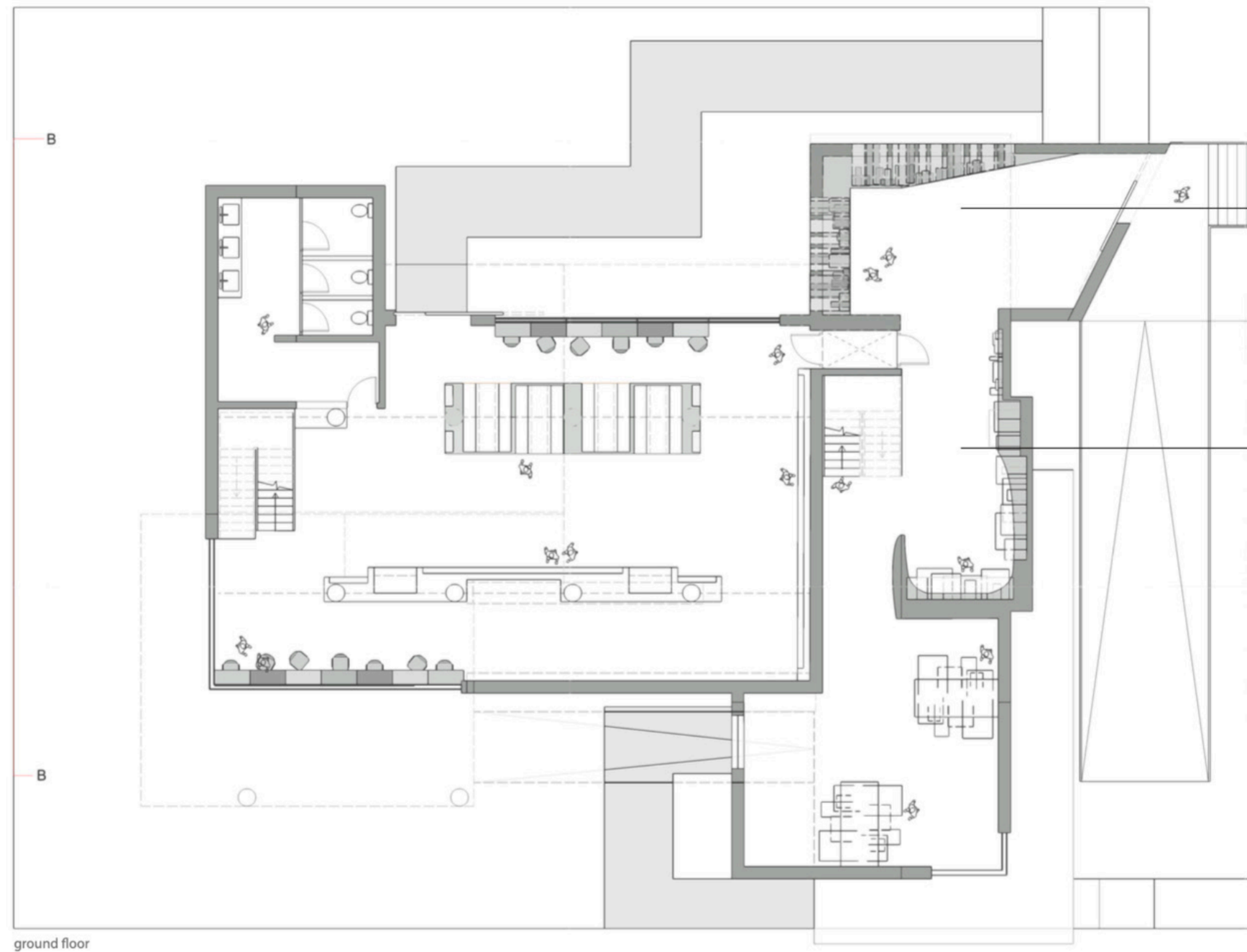
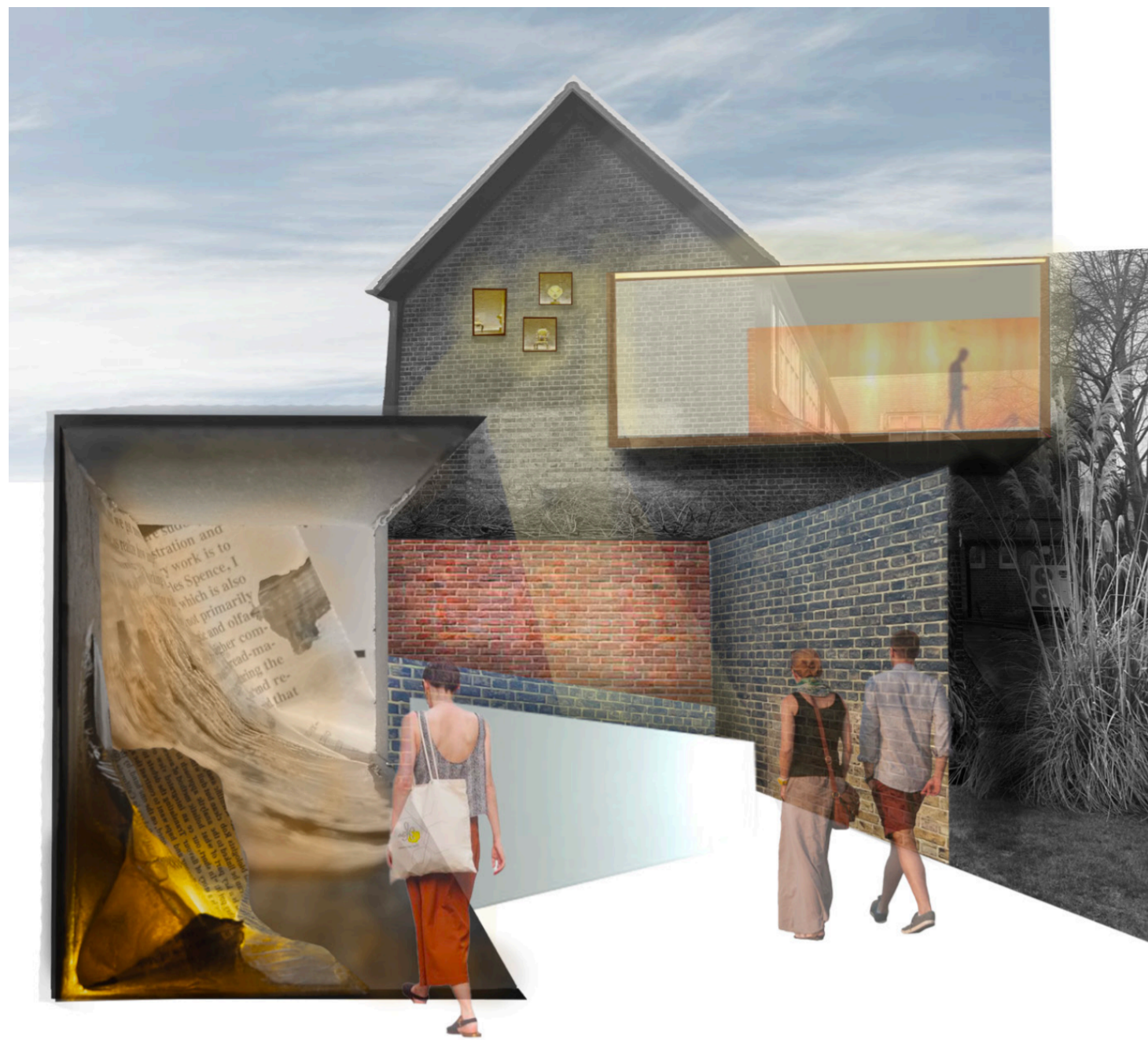
the atmosphere of a space is an immediate form of **physical perception**

**low light** creates an intimate, upscale atmosphere

atmosphere is a state of resonance and identification (sensory, emotive and cognitive) between an individual and their surrounding built space

just by looking at these photographs the atmospheres created are dependent of the lighting of the space, **cool tone** lighting creates a more **cold and sinister** atmosphere compared to the **warm tones** which create a **safe and comforting** atmosphere





ground floor



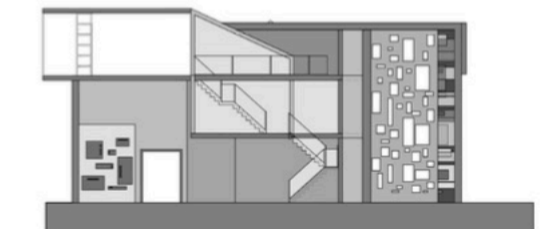
Archive display



Archive deposit



front elevation



section through front elevation



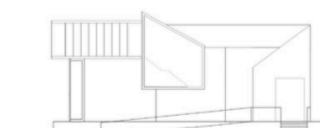
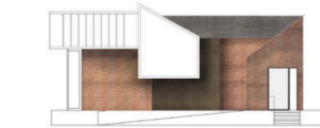
left elevation



rear elevation



right elevation



front elevation

left elevation

rear elevation