

A live collaborative project between Year 2 Interior Architecture students and Kilburn Museum Lab.

The brief was to design a series of temporary public interventions to support a forthcoming community based exhibition in June 2024.

Design proposals needed to respond to a clear set of criteria;
Sustainable
Cheap
Easy to transport
Safe for the public
Easy to assemble and disassemble.

Working in pairs, students were allocated one of the following tasks.

Group A_design 3D 'teasers' to be installed alongside the 'day to day life' of existing retail outlets within Kilburn High road, to drive public engagement/ interest leading to the main exhibition.

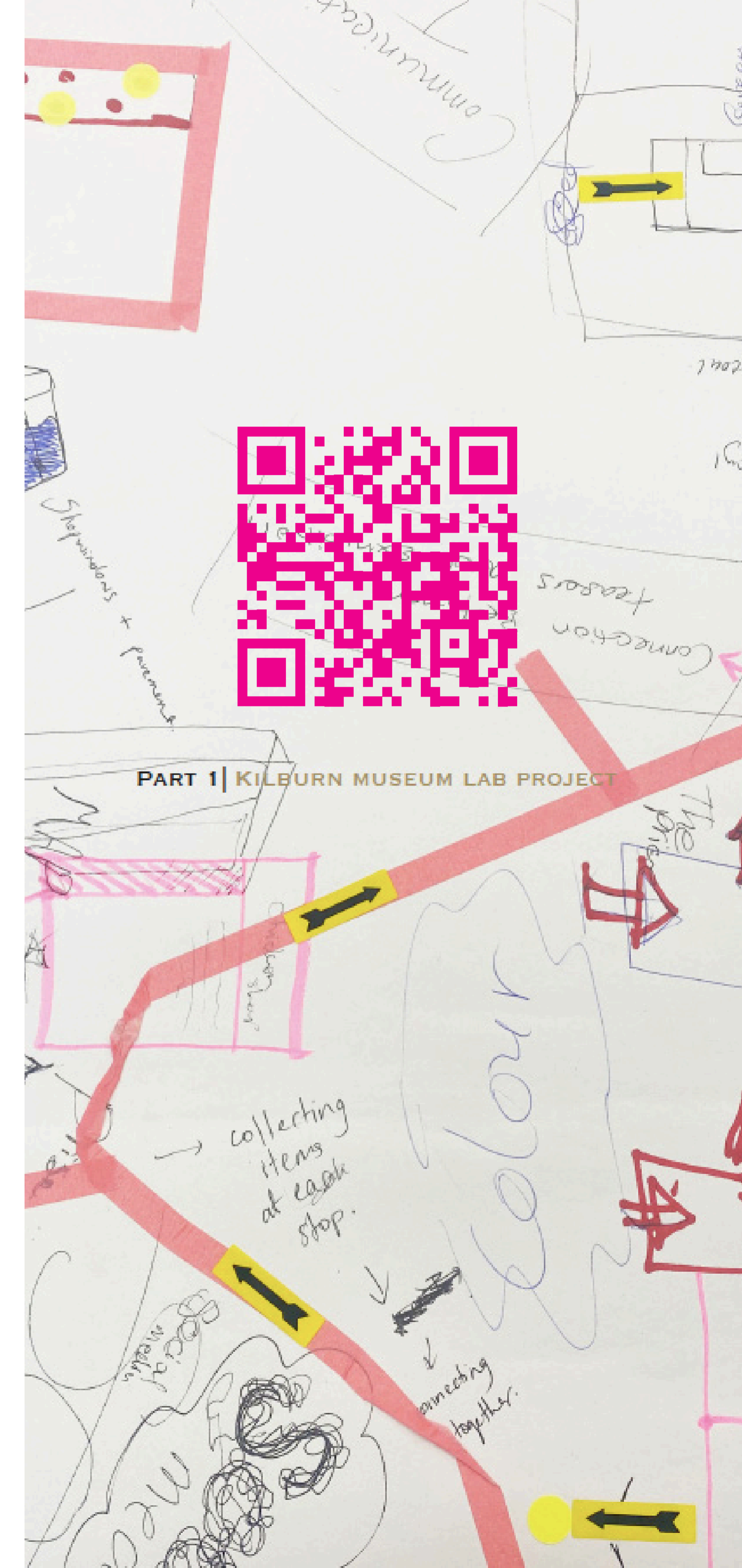
Group B_design communication and engagement strategies to publicise the forthcoming event.

Group C_design an exhibition system that is adaptable to various spaces; easy to assemble and transport to a public venue.

Initial outcomes were 'tried' at a public event held at the Kiln Theatre, Kilburn and promoted through social media reels made by the students to gather public feedback.



©Memories of Possibilities by Anna Bowman



COLLECT!

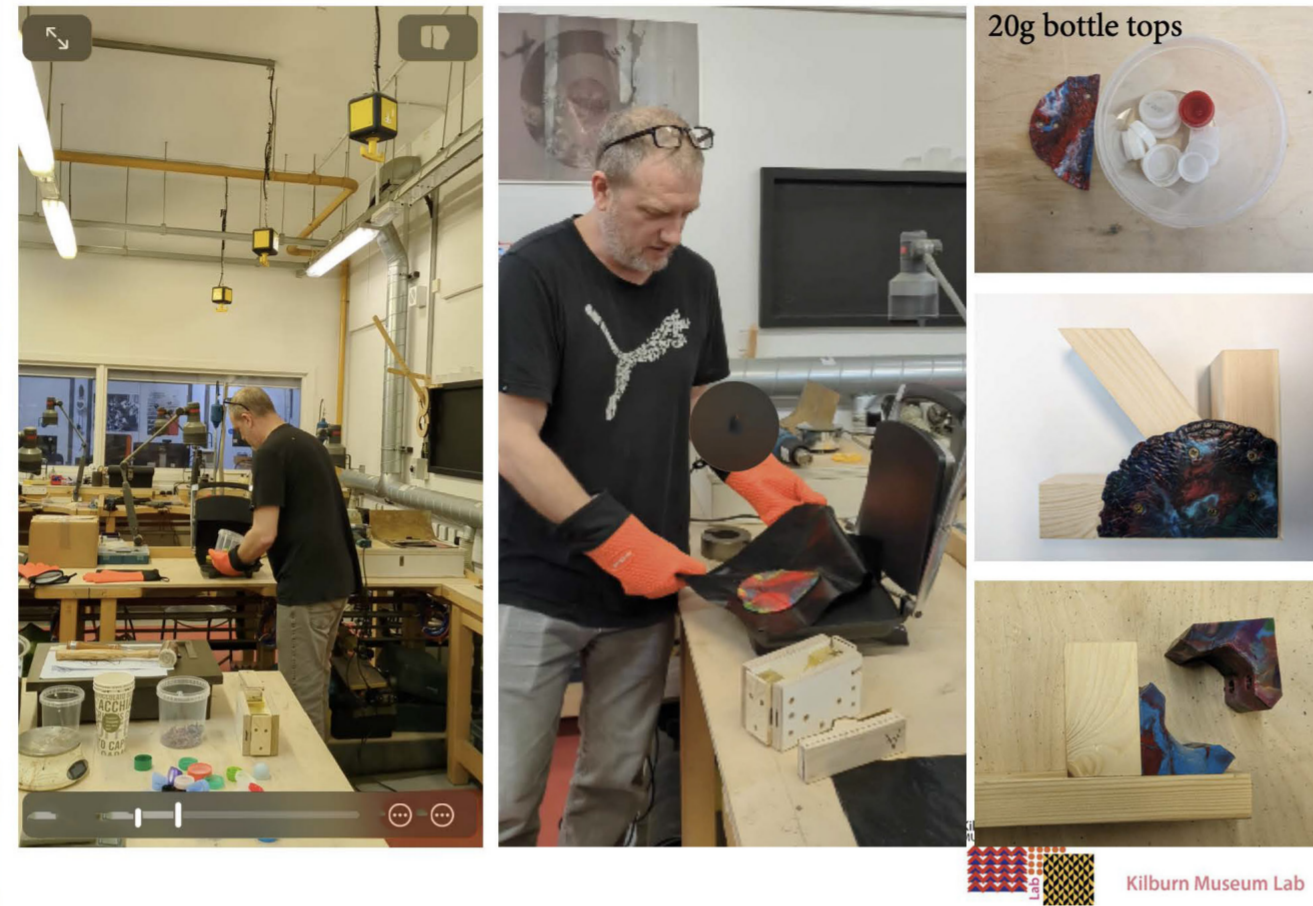
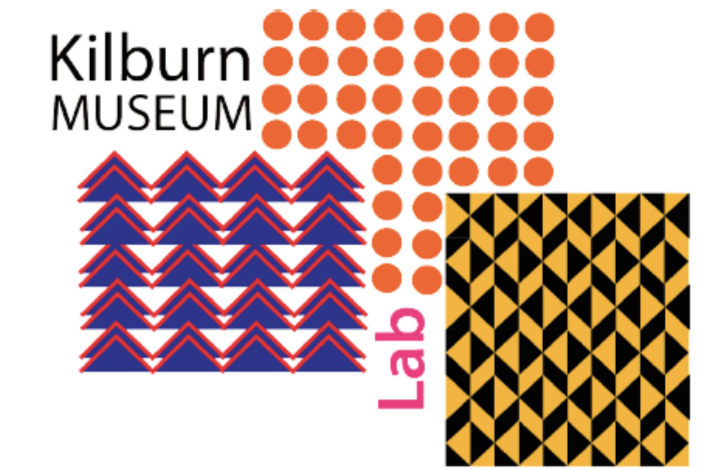
WE NEED YOUR HELP
 HELP US IN COLLECTING THE PLASTIC TOPS OF YOUR BOTTLES AND TO TURN THEM INTO SUSTAINABLE PROJECTS

COLLECT Save your plastic bottle caps
 DROP-OFF Find designated points across campus.
 @Grove/cafe'
 @Quad/cafe'
 @Library/cafe'
 @MDXHouse/at the entrance
 @Grove Building, Staff Room
 @Grove Building, Small Metal Workshop
 @Ritterman Building, 2nd floor, in front of the elevator

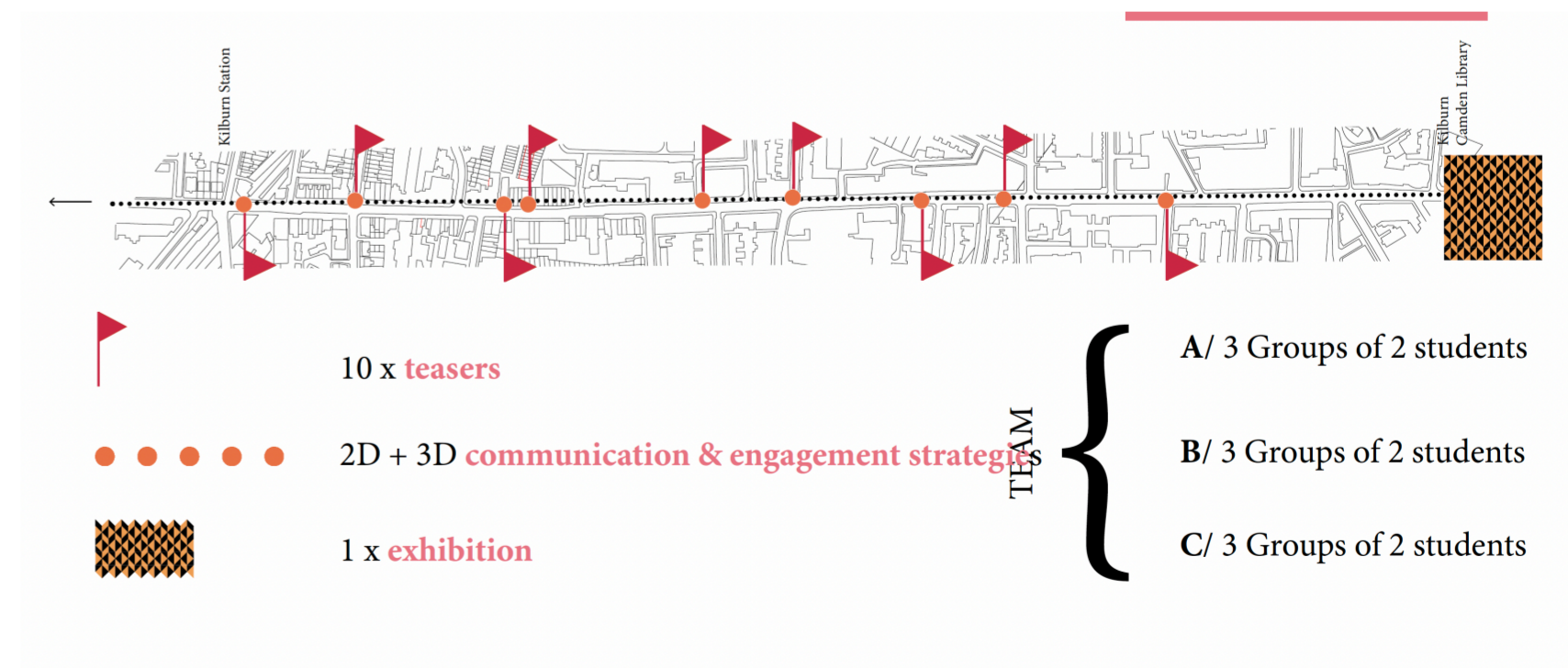
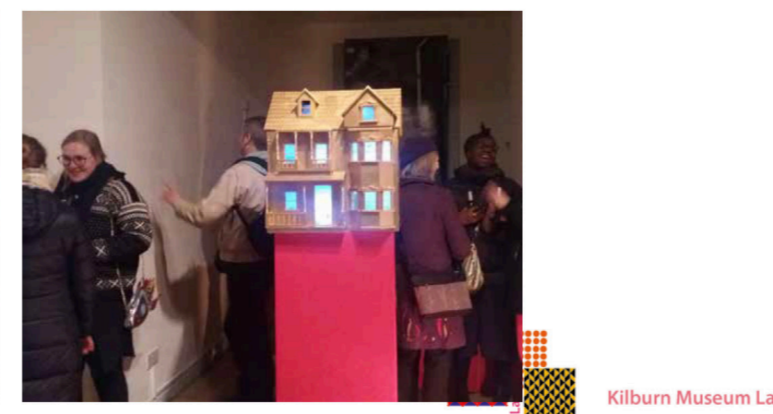
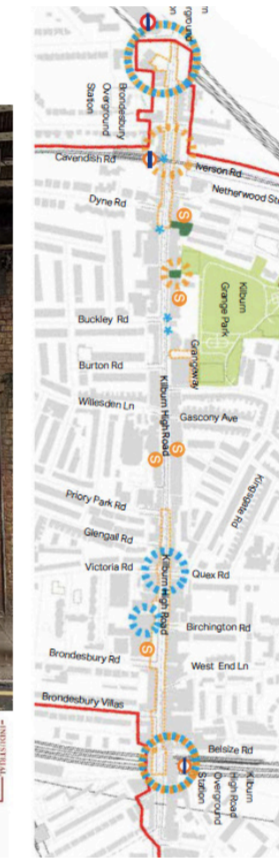
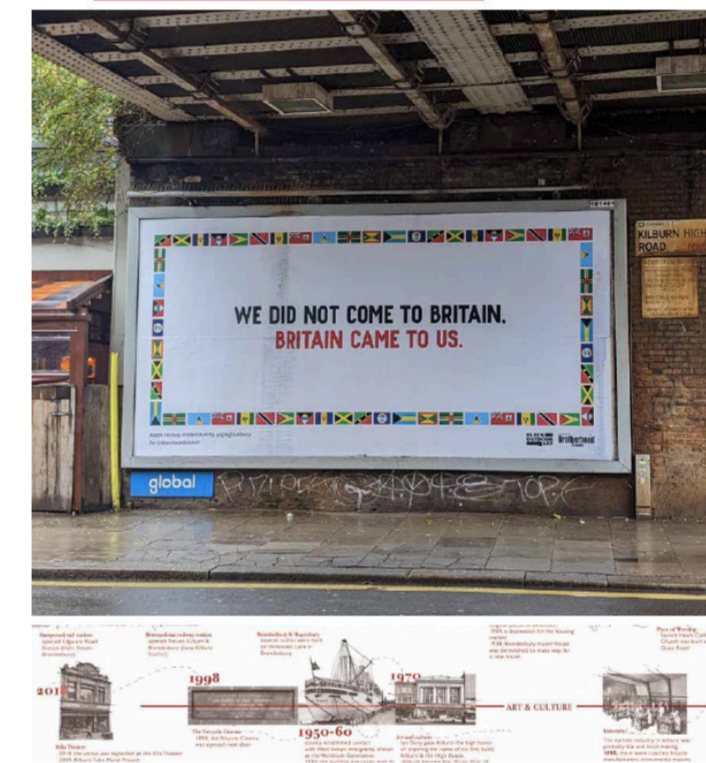
Campus Sustainability Goals

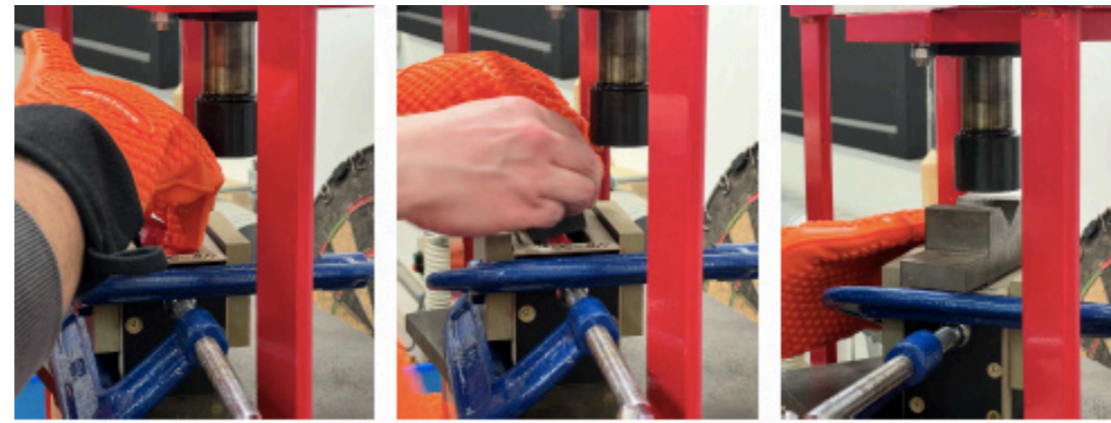
SUSTAINABLE FUTURES // 2023-24 // Middlesex University, London

Kilburn Museum Nomadic // DETAILS



Kilburn// context and opportunities





Placing the melted plastic into a mould. Using a hydraulic press machine to push the top of the mould into the bottom of the mould with the plastic in the middle of it.



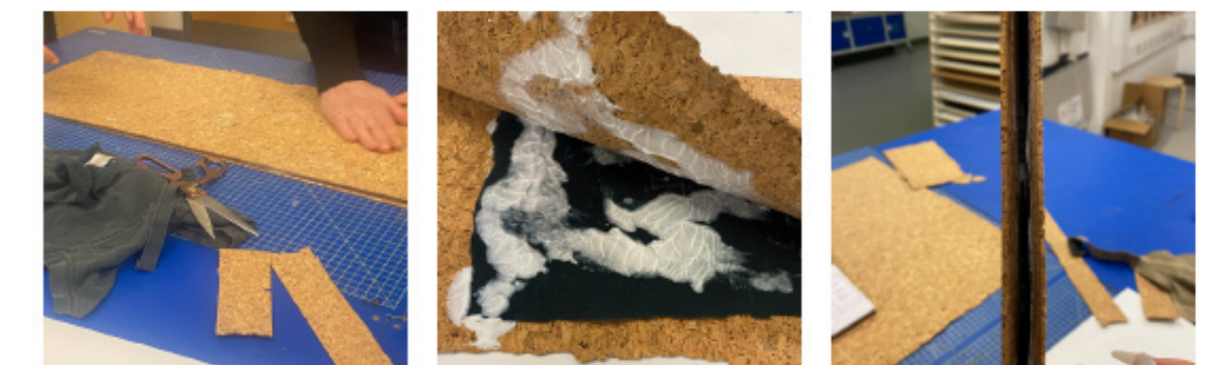
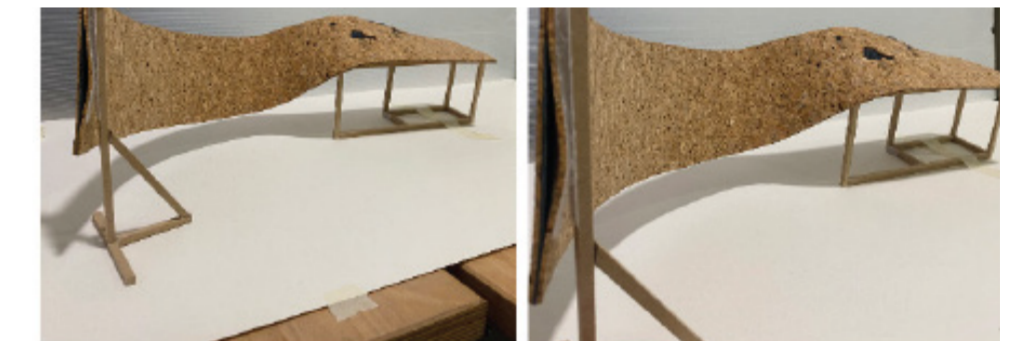
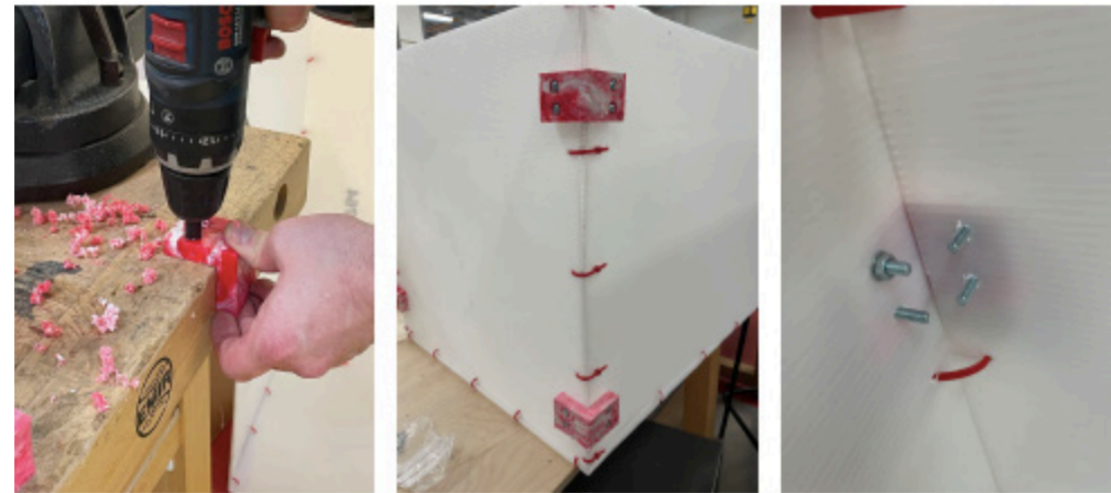
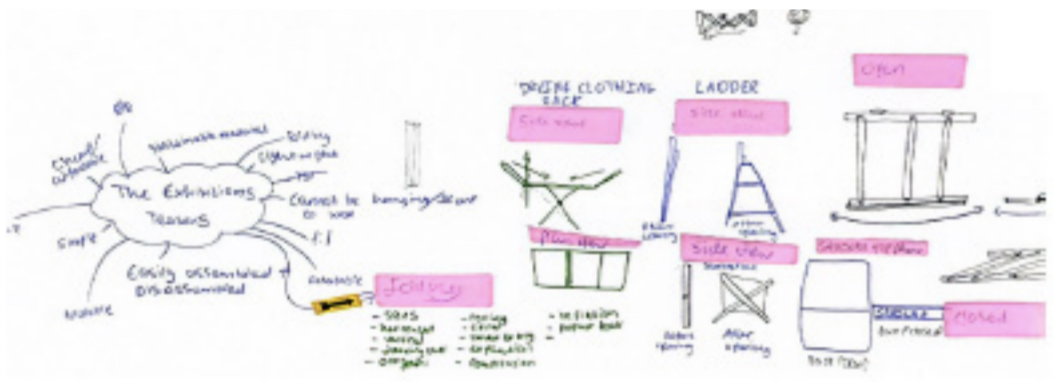
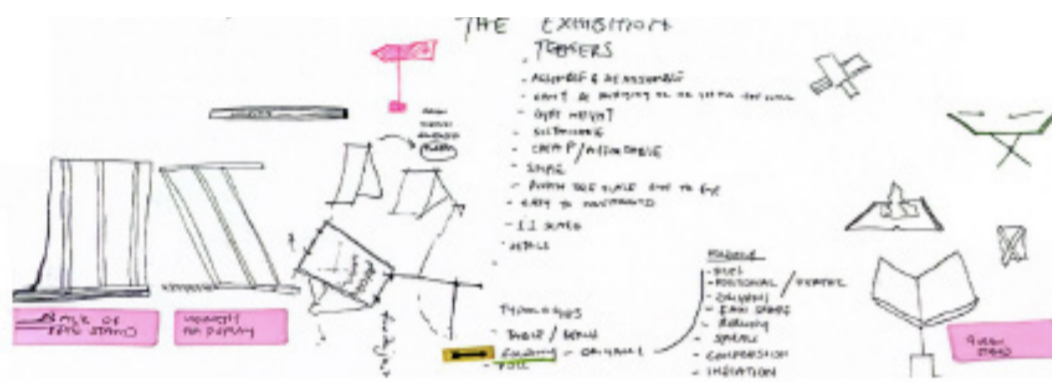
Taking the bracket out of the mould after waiting thirty minutes for it to cool down. This process was repeated seven more times as our two biggest correx box stands needed four each.

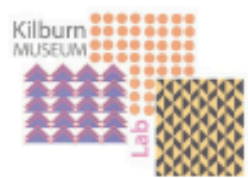
How will it join to the table?
What angle will the legs be?

How will the screen slot in?
What material? 100° angle.

Slot fitting

20 30 20
ANGLER x mBy 20





TEASERS

POLE

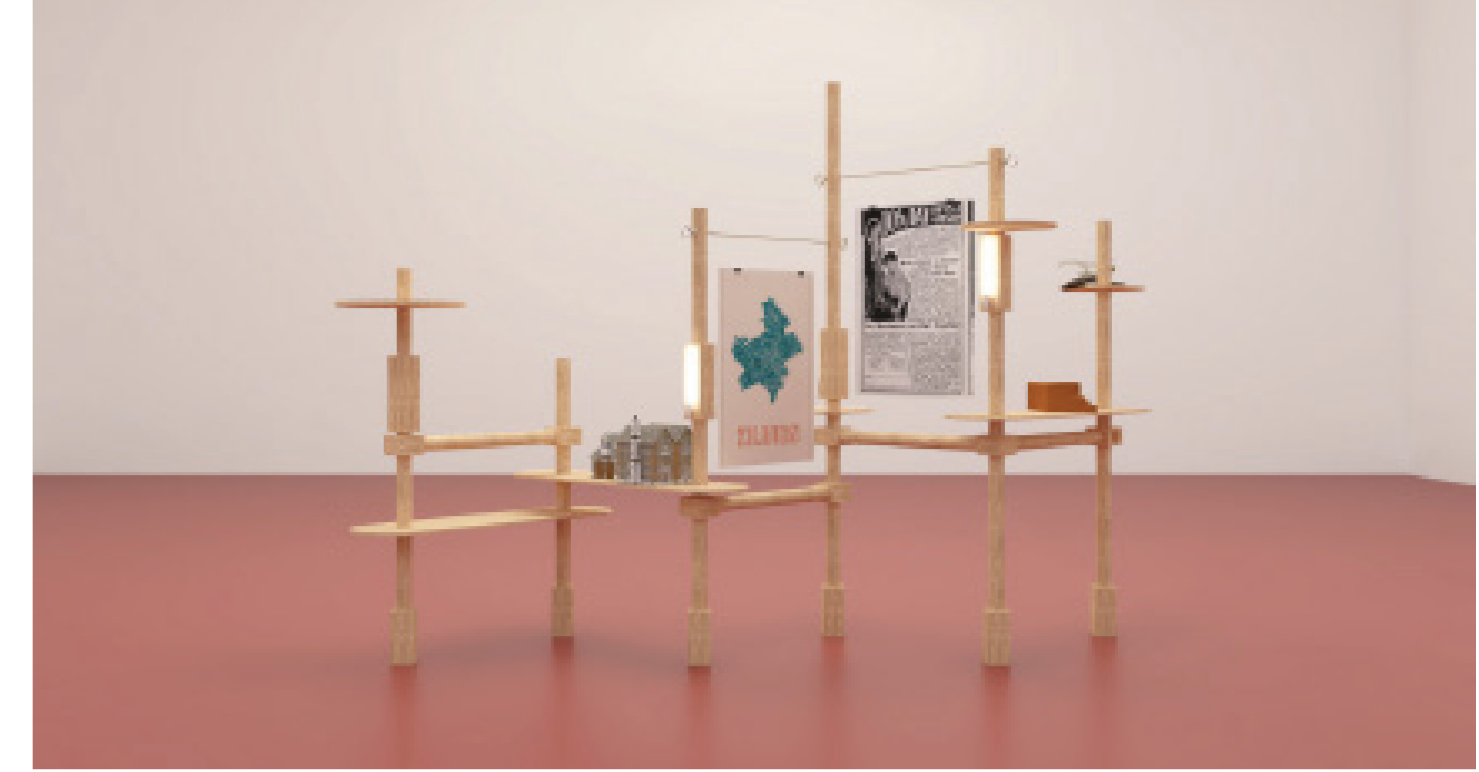
Context: This is a pole stand where 2d and 3d objects will be displayed. The reason why we choose to make it out of clay, that is green glazed, is to appreciate and celebrate the Irish population within the community. Also we wanted to celebrate the diverse cultural, ethnic and socioeconomic backgrounds in Kilburn, which is the idea behind the engraving of different languages throughout the pole.

We were testing out different design possibilities and patterns for our base that were based on the various ethnicities and cultures in Kilburn.

Kilburn has 18% of the population that is Black African, 12% are Arabs, 11% are White British, 9% are Asians. These are few facts that showcase the diversity within the Kilburn community.



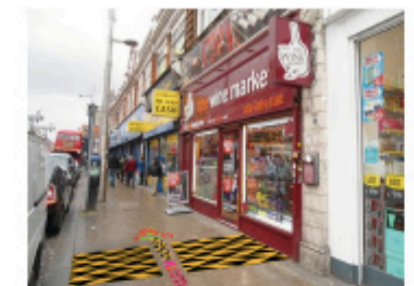
scan our QR code to see the video



Using the patterns from the kilburn lab logo to create an arrow that will direct people to the exhibition



Creating an eye-catching display by using the patterns from the logo, made out of vinyl, the display will follow the pavement.



The Kiln theatre then hosted an exhibition of our design. The public visited, reviewed our work, and offered suggestions. Positive response was received, and the public appreciated our consideration of the neighbourhood instead of merely creating a design for retail display.

This project was quite pleasant since it allowed me to identify my own skills and flaws. Also, working on a live project was frightening at first, but I am pleased I had the opportunity. It was quite wonderful to be able to create something that people could use and enjoy while being sustainable and affordable. Working with a community I was unaware of was an interesting experience.



Kilburn exhibition, Kiln theatre. 2024.



Kilburn exhibition, Kiln theatre. 2024. Photographed by Azria, C.