

# COMPOS(T)ING COMMUNITY

Exploring the urban issue: lack of accessible green space in the King's Cross area and the borough of Camden.

As rapid development prioritizes profit over greenery, my design proposal aims to reclaim space for the community. Offering areas to grow, cultivate, and reconnect with nature in an increasingly built-up environment.

Blending spatial strategy with environmental sensitivity, this project reflects my passion for sustainable, community-focused design.

## CAMDEN'S WILDLIFE

In 2019, a global assessment of biodiversity and ecosystem services estimated that a million species are at risk of extinction.

The situation has been described as the planet's "sixth mass extinction."

The wildlife of Camden is effected by this problem, therefore I wanted to help and keep the different specie of plants and ecosystem alive just like its community.

# "SIXTH MASS EXTINCTION"

## GREEN MAP

In the Camden Borough there are only 4 outdoor community gardens, and 2 allotments shared with the local population of the King's Cross which is around 11,000 people

### Council allotments

Antrim Grove Allotments  
London  
NW3 4XR

Westcroft Estate Allotments  
London  
NW3 2YS

### Active community gardens

Elm Haven  
Barker Dr, London  
NW1 0JW

Foodscape Urban Farms  
1 Rochester Square, London  
NW1 9SD

Castlehaven  
Horticulture Hub  
Hawley Rd, London  
NW1 8RG

### Permanently closed gardens

The Skip Garden  
1 Tapper Walk, London  
N1C 4AQ  
Current building that took over the garden

### Parks in the borough

### Borough of Camden



View from the terrace towards main building

## LONDON LIVING STANDARDS

# 50M<sup>2</sup> FLAT



In Greater London, 26.7% of flats range from 30m<sup>2</sup> to 49m<sup>2</sup>, while the majority, 36.9%, fall between 50m<sup>2</sup> and 69m<sup>2</sup>.

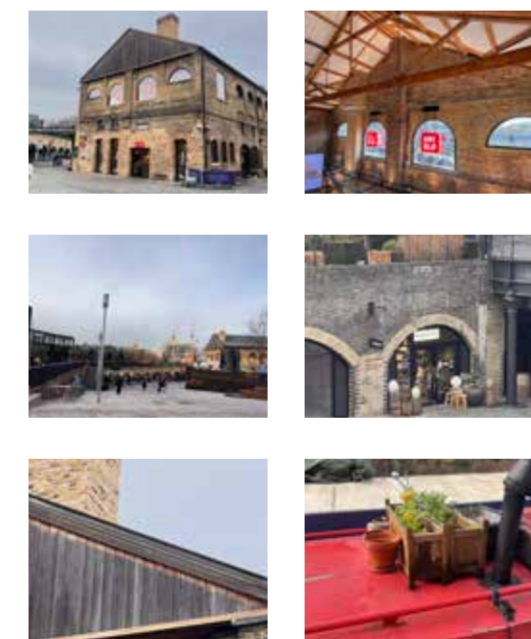
The London Borough of Camden residential flat sizes are between 47.0m<sup>2</sup> and 57.0m<sup>2</sup>.

One-bedroom flats often lack outdoor spaces like balconies, limiting residents' ability to integrate nature into their homes. This shortfall impacts overall well-being and diminishes the quality of life, reflecting a disregard for thoughtful living space design.

## COAL HISTORY

Constructed in 1851, Coal Drops served as a hub for transporting and storing coal. Trains used tracks on the upper level to deliver coal, which was dropped into the middle level for grading and then directed into sacks or carts at the yard level.

Inspired by its historical role and distinctive features like coal silos, the site has been re-imagined to merge its industrial heritage with nature, creating a striking contrast within its industrial surroundings.



## POLITICAL MANIFESTO

I aim to establish a community space where residents can reborn and reconnect with nature and growing plants.

Many people in the borough lack garden spaces, this initiative will provide an opportunity to cultivate their green fingers and composing stronger community bonds.

## CONCERN & AIM

An increasing number of green areas are being destroyed to make way for residential developments, leading to a loss of accessible spaces where communities can connect with nature and cultivate their own plants. This process is also devastating ecosystems. My goal is to counter this trend by creating spaces that allow people to reconnect with nature and rediscover essential skills, such as farming.



## USERS

**Local workers & schools**  
Workers can help grow produce or maintain the space, while children can learn about fresh, local food after school.



**Unemployed & Homeless people**

The centre offers unemployed and homeless individuals shelter and free food in exchange for their assistance in maintaining and cultivating the facility.



**Local resident**  
Local residents can bring organic waste for composting and plants they can no longer keep, helping to sustain its gardening efforts.



**Hospital people**  
Local hospital patients can engage in plant care activities, enhancing their mental well-being and making their hospital stay more enjoyable.



**People living in boats**  
Boat residents along the canal can utilize the centre to cultivate vegetation, compensating for the limited space on their boats.



**Global Generation**  
An educational charity fostering connections with nature and community through co-creating gardens, engaging children, youth, businesses, residents, and families.



1860



Bagleys Warehouse

1980



Uniqlo Store

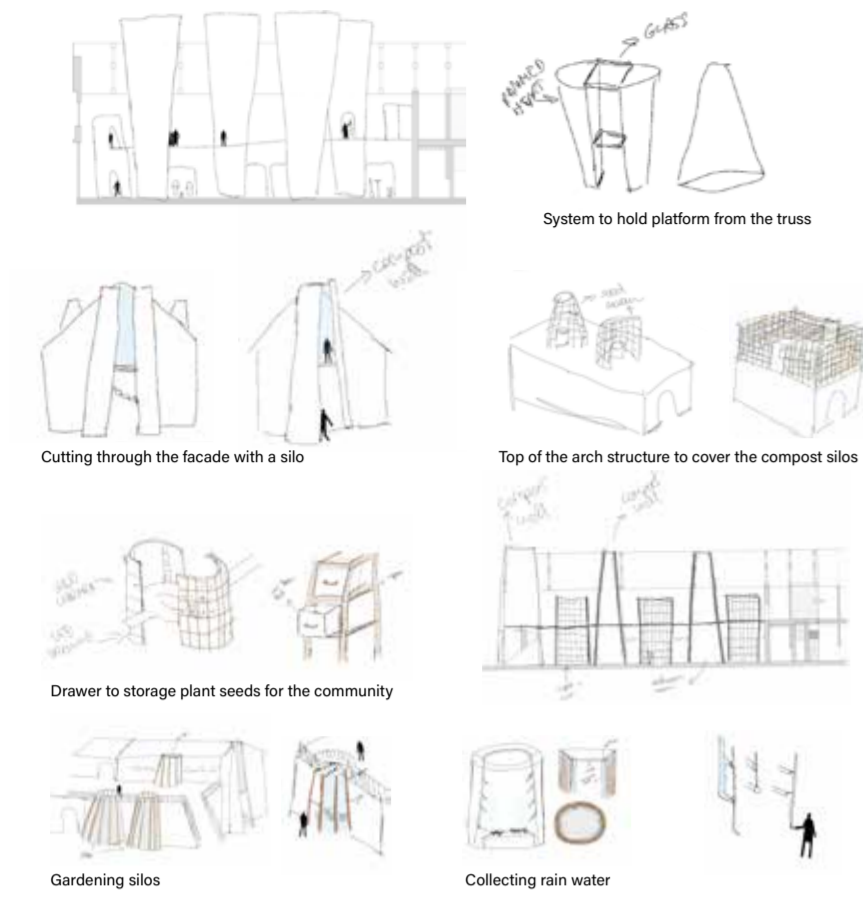
2025



Hydroponic community farm

2030

## DESIGN DEVELOPMENT

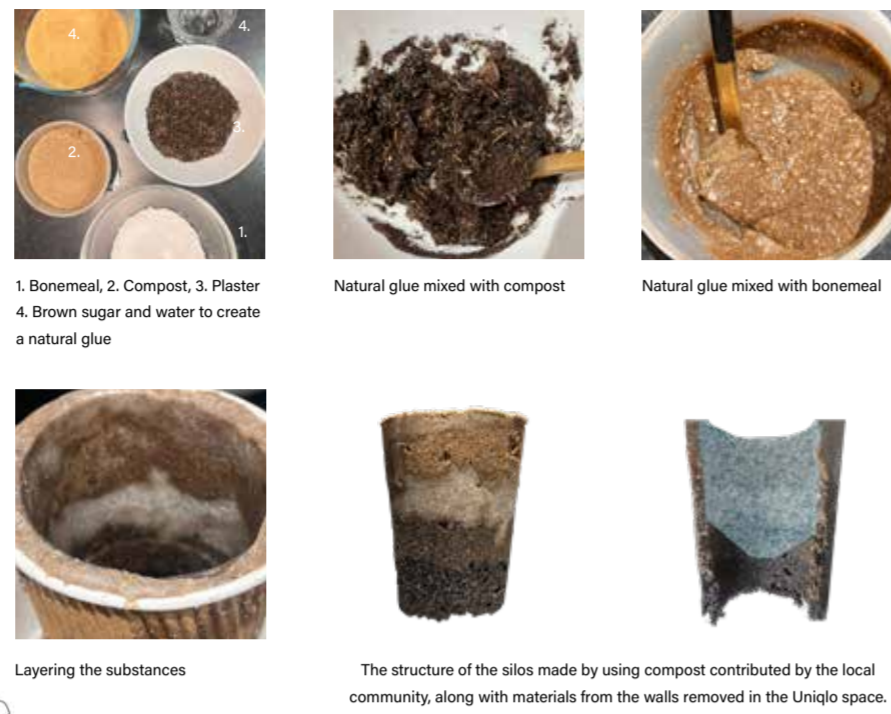


## DECOMPOSED

By utilizing toilet rolls, I experimented with various methods to decompose and explode silos, which enabled me to design a structure for the building's interior space.



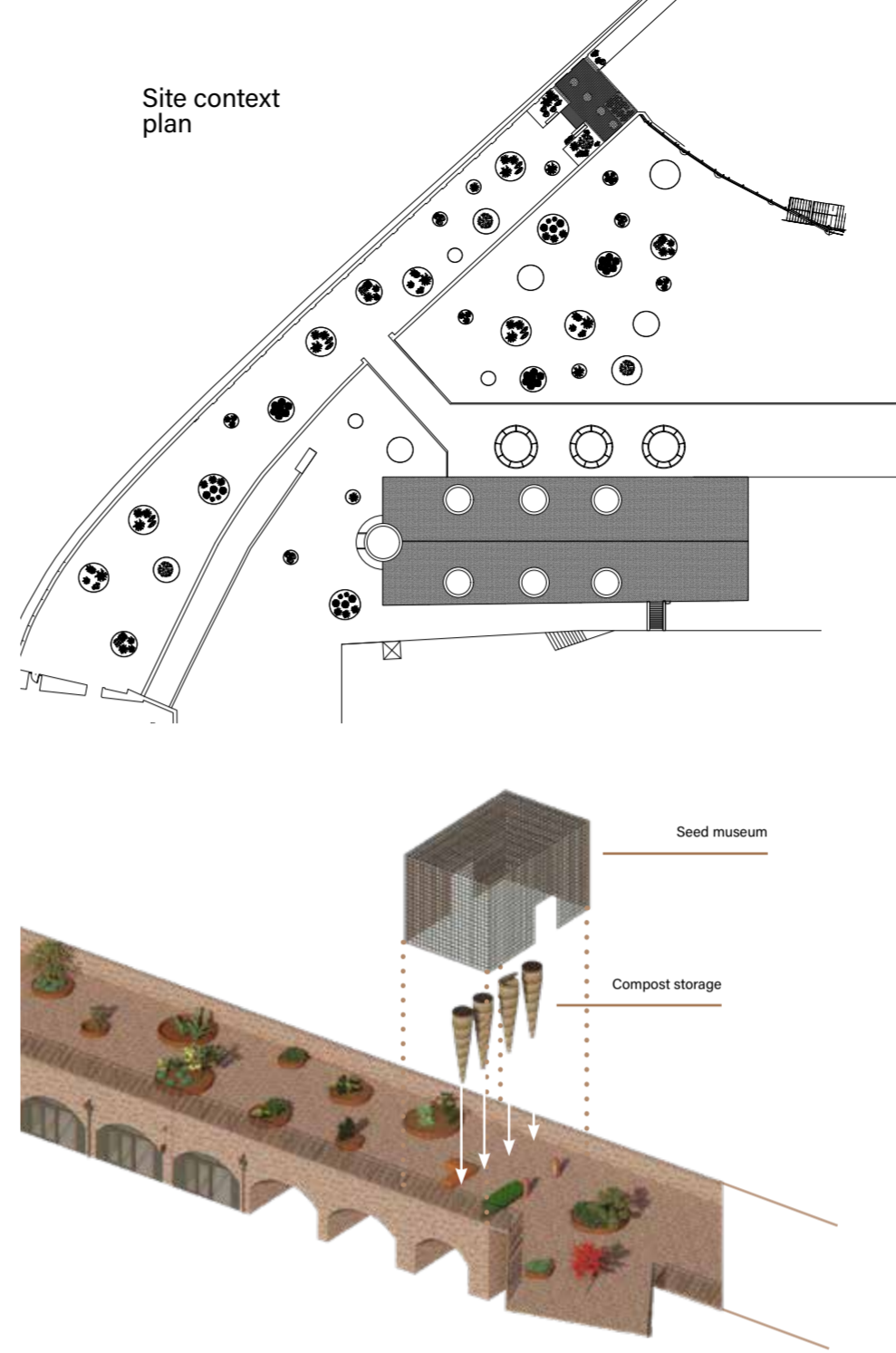
## RAMMED COMPOST



## MATERIAL BOARD



## Site context plan



## DEMOLITION PHASE



## Seed library

## Hydraulic farm

## Water tank

## Terrace entrance

## Green house

## Plant laboratory

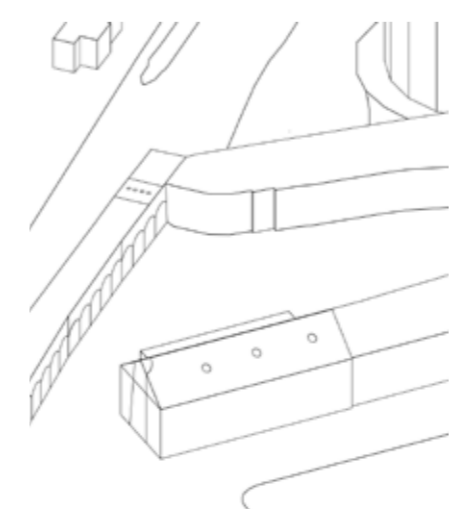
## Global Generation office & Cafe

## Fruit/vegetable shop

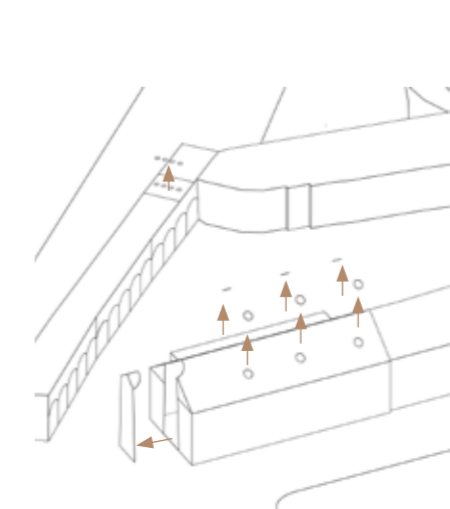
## Changing room & toilet

## Main entrance

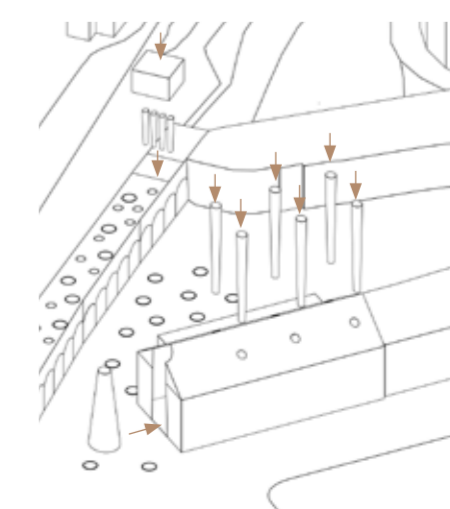
## CUTTING



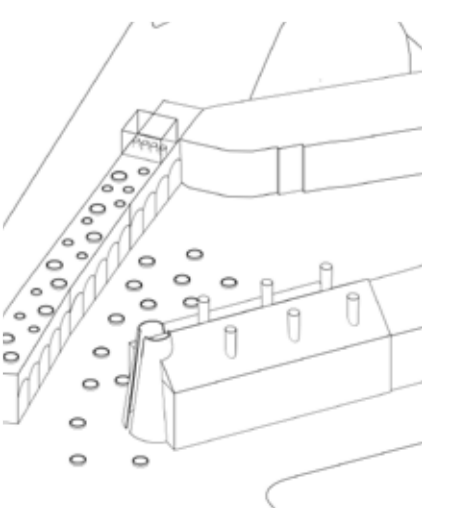
## TRANSPLANTING



## FERTILIZING

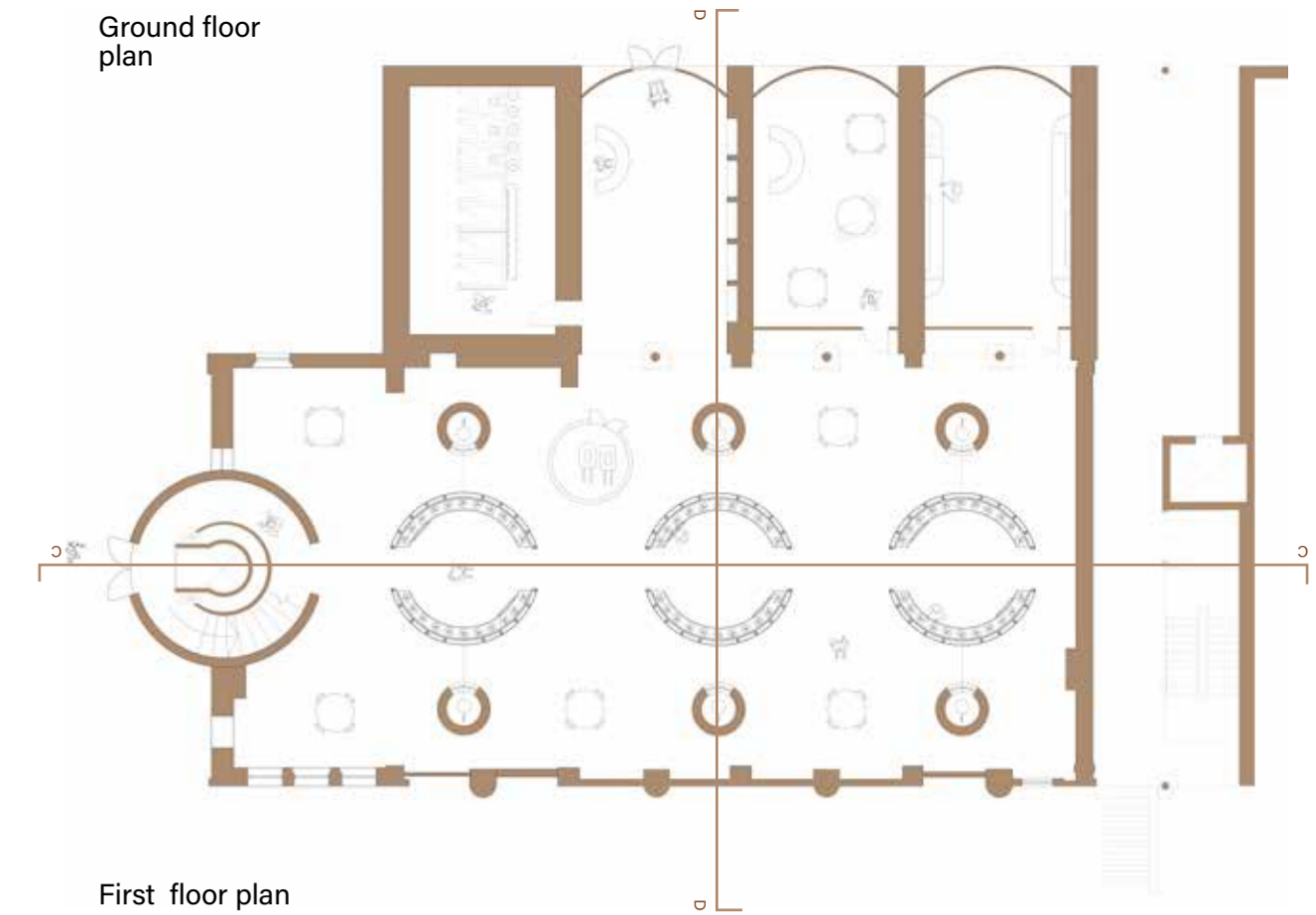


## GERMINATING

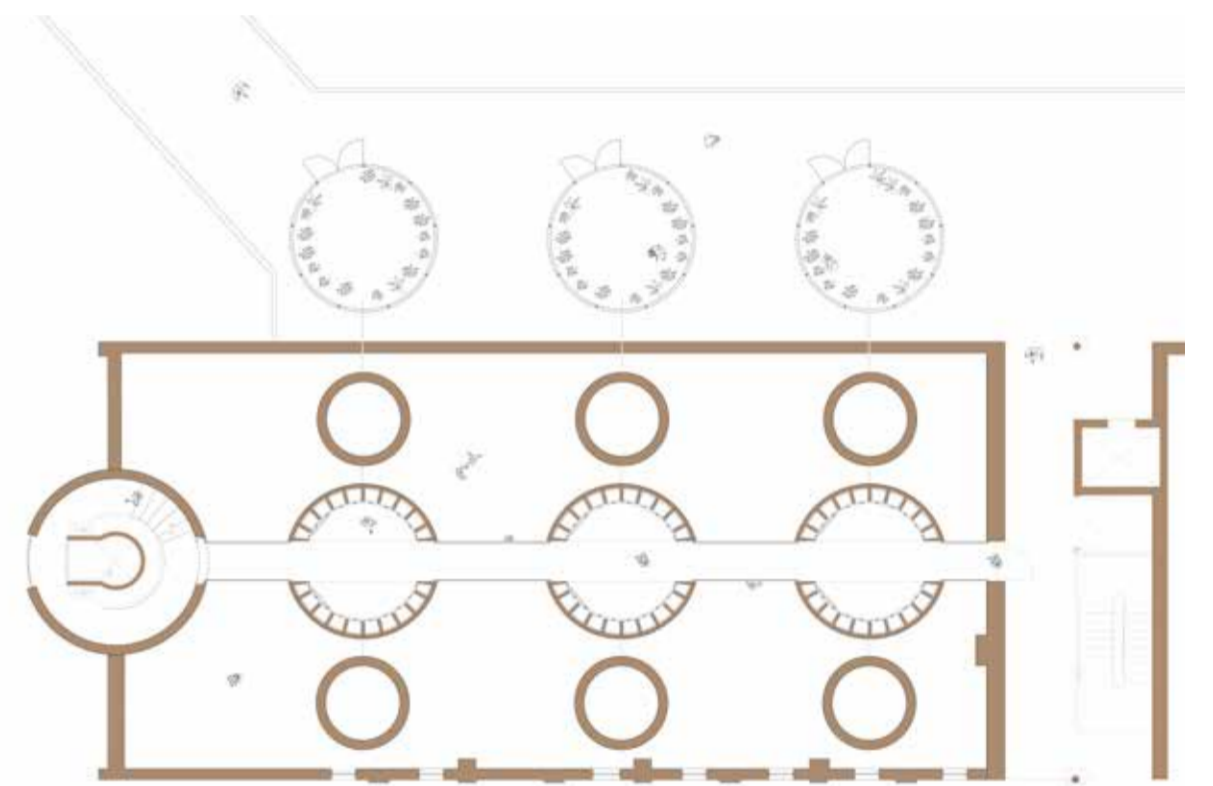




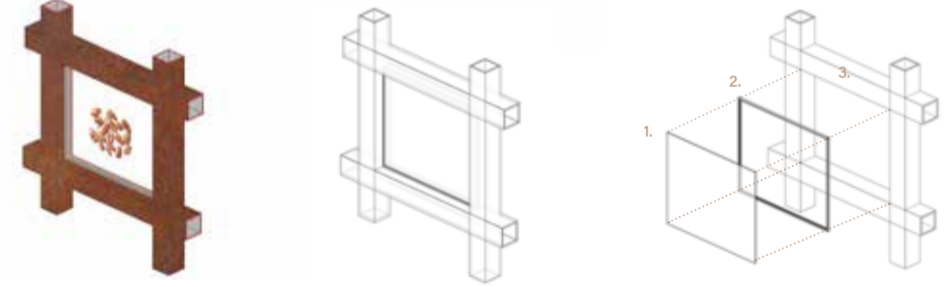
View approaching the main building.



First floor plan

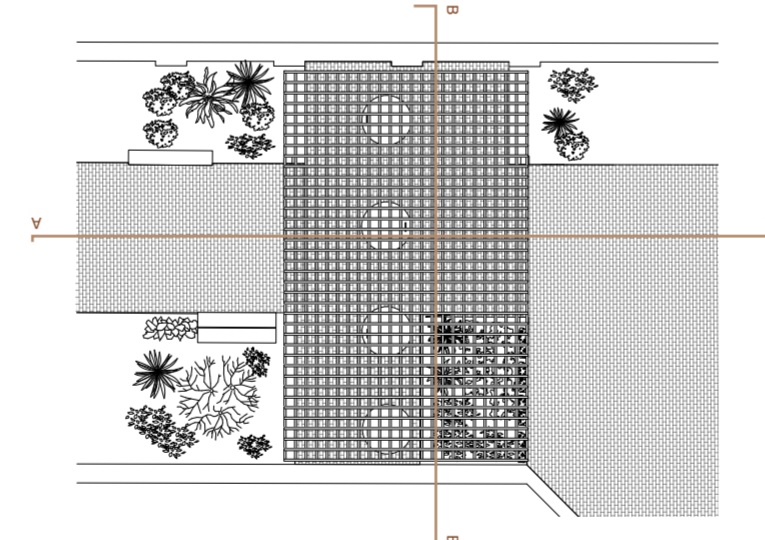


View inside the seed museum.

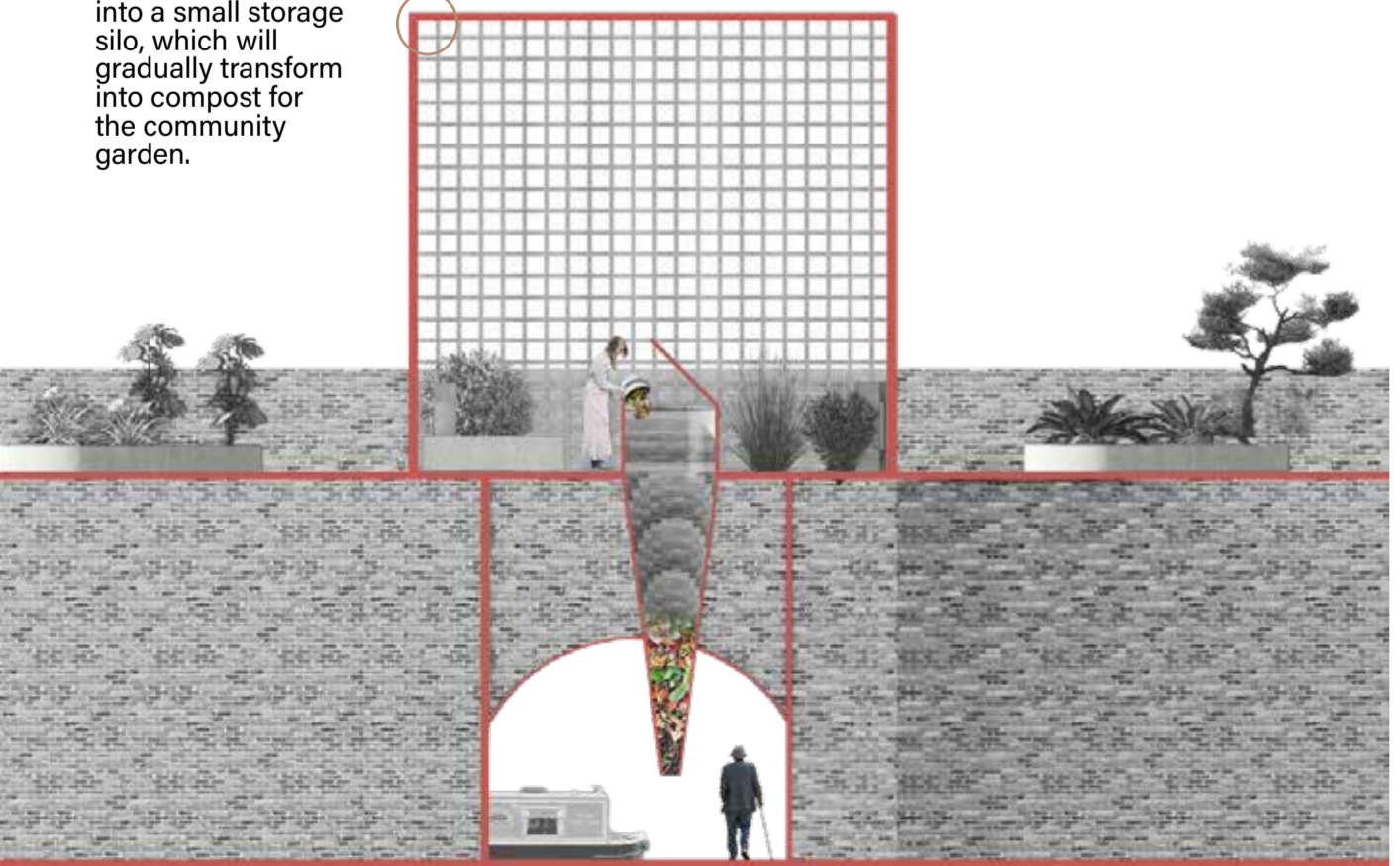


- 1. Glass containing plant seeds
- 2. Aluminium profile
- 3. Steel grid copper plated

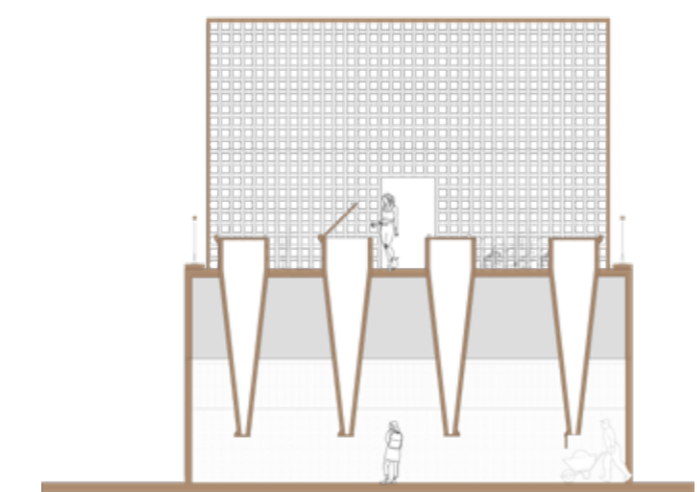
Seed museum



The arch will provide a dedicated space for local restaurants and residents to deposit their organic waste into a small storage silo, which will gradually transform into compost for the community garden.



BB section



SDG'S

- 2 ZERO HUNGER**  
By providing a garden space for people to grow their own vegetables, they can access fresh fruits and vegetables at significantly reduced costs.
- 11 SUSTAINABLE CITIES AND COMMUNITIES**  
Establishing a green space will help combat rising air pollution while also transforming the industrial surroundings that negatively impact both the environment and the community.
- 12 RESPONSIBLE CONSUMPTION AND PRODUCTION**  
Establishing a green space will help combat rising air pollution while also transforming the industrial surroundings that negatively impact both the environment and the community.
- 13 CLIMATE ACTION**  
A key goal of my project is to lower the costs of waste disposal, particularly organic waste, by establishing a local facility that transforms it into a reusable compost for the community. Rather than being dumped in fields.
- 15 LIFE ON LAND**  
Encouraging the community to grow seasonal produce in a controlled, chemical-free environment can also contribute to reducing the impact of over-agriculture.



# THE SILTER



## First floor - Seed library

The seeds library will be stored in drawer for the community to grab and use them in the green areas or own gardens, balconies.

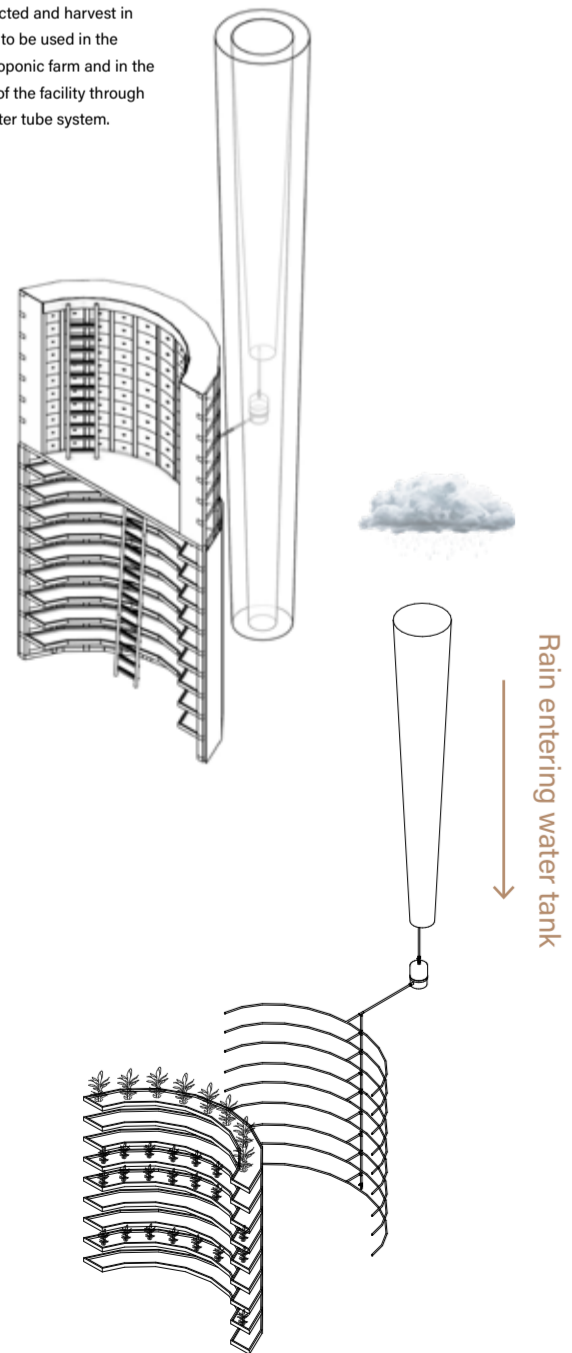


Top - First floor showing the seed library

Bottom - Inside one of the Silter with people cultivating.

## Ground floor - Water system

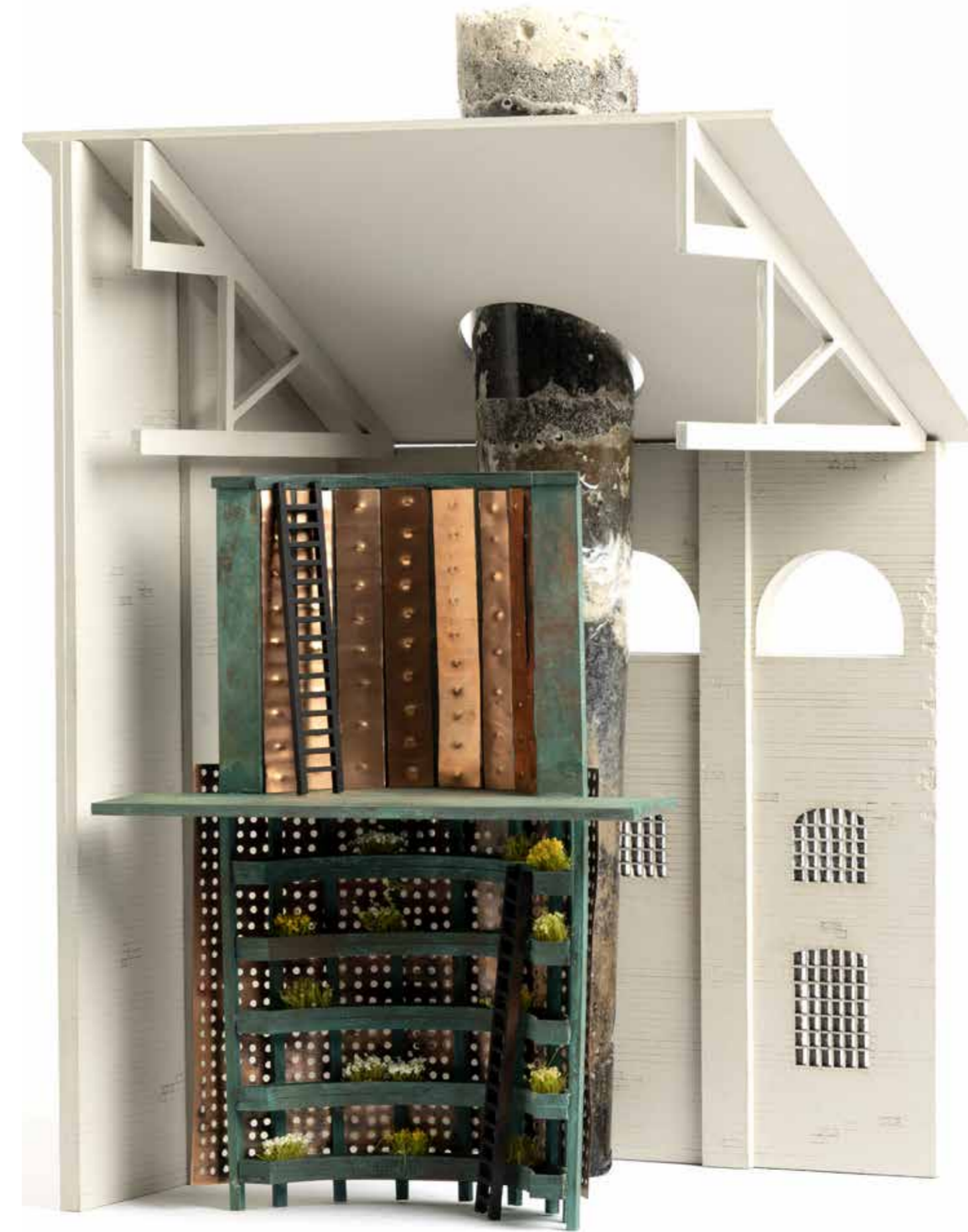
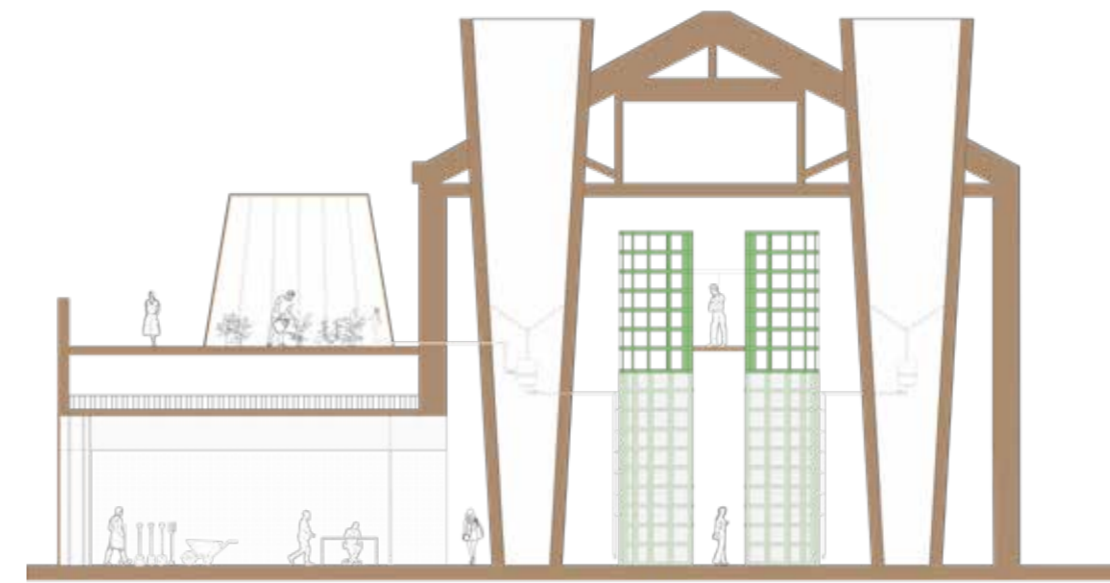
Raining water will be collected and harvest in silos to be used in the hydroponic farm and in the rest of the facility through a water tube system.



Rain entering water tank



## DD section





Changing rooms & toilets.



View of the outdoor garden.



View showing the green houses.

View from inside the shop.

