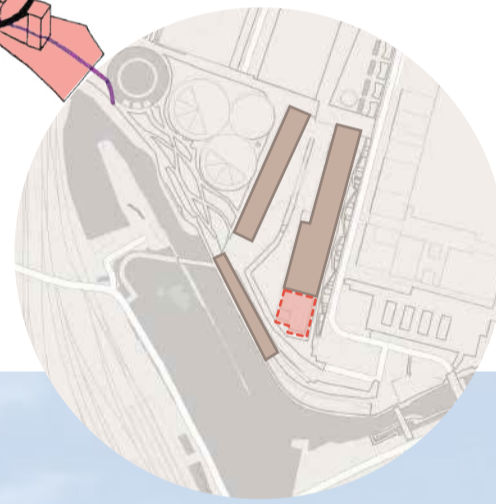


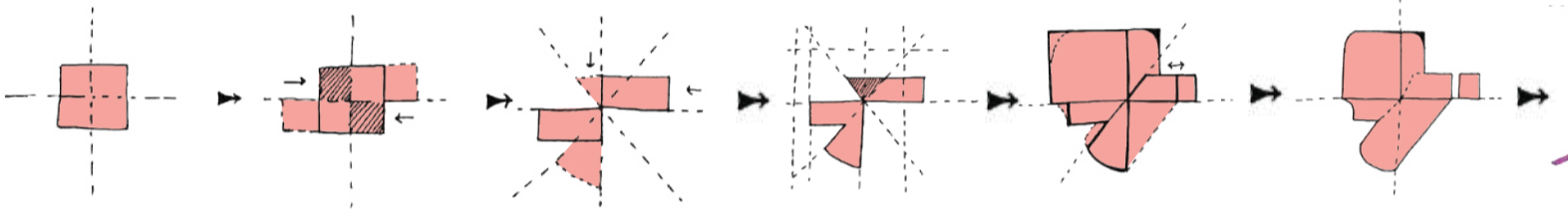
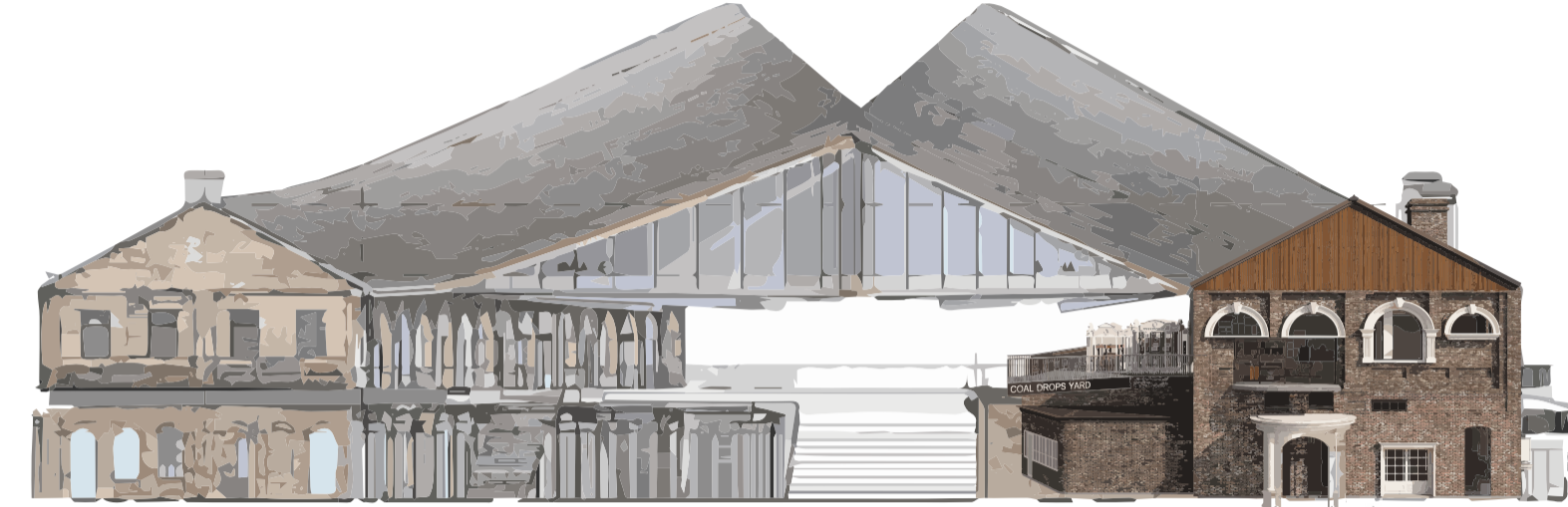
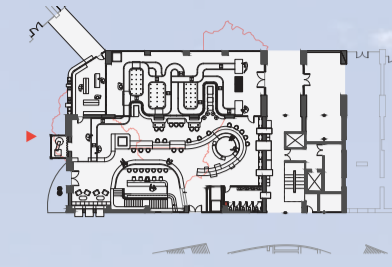
# HERITAGE DEPOT

## Architectural Collage: Spolia and Portmanteau Design Fusion

This project aims to redefine interior design through the innovative integration of spolia and portmanteau design concepts. Inspired by demolished building facades, the interior space will be transformed into a dynamic and evocative environment. Salvaged doors and windows will serve as the primary design elements, reflecting the ethos of sustainability and historical preservation. The project seeks to promote the concept of spolia design by showcasing its relevance in contemporary interior spaces. With the incorporation of salvaged architectural elements, it is aim to celebrate the history and craftsmanship. A dynamic space evoking a sense of nostalgia and intrigue is created with portmanteau design principles seamlessly blend disparate architectural elements into a cohesive whole by using salvaged windows and doors. By utilizing salvaged materials aligns with our commitment to environmental sustainability, it is important to repurpose architectural elements that would otherwise be discarded.



Exterior Front Elevation View From Bridge



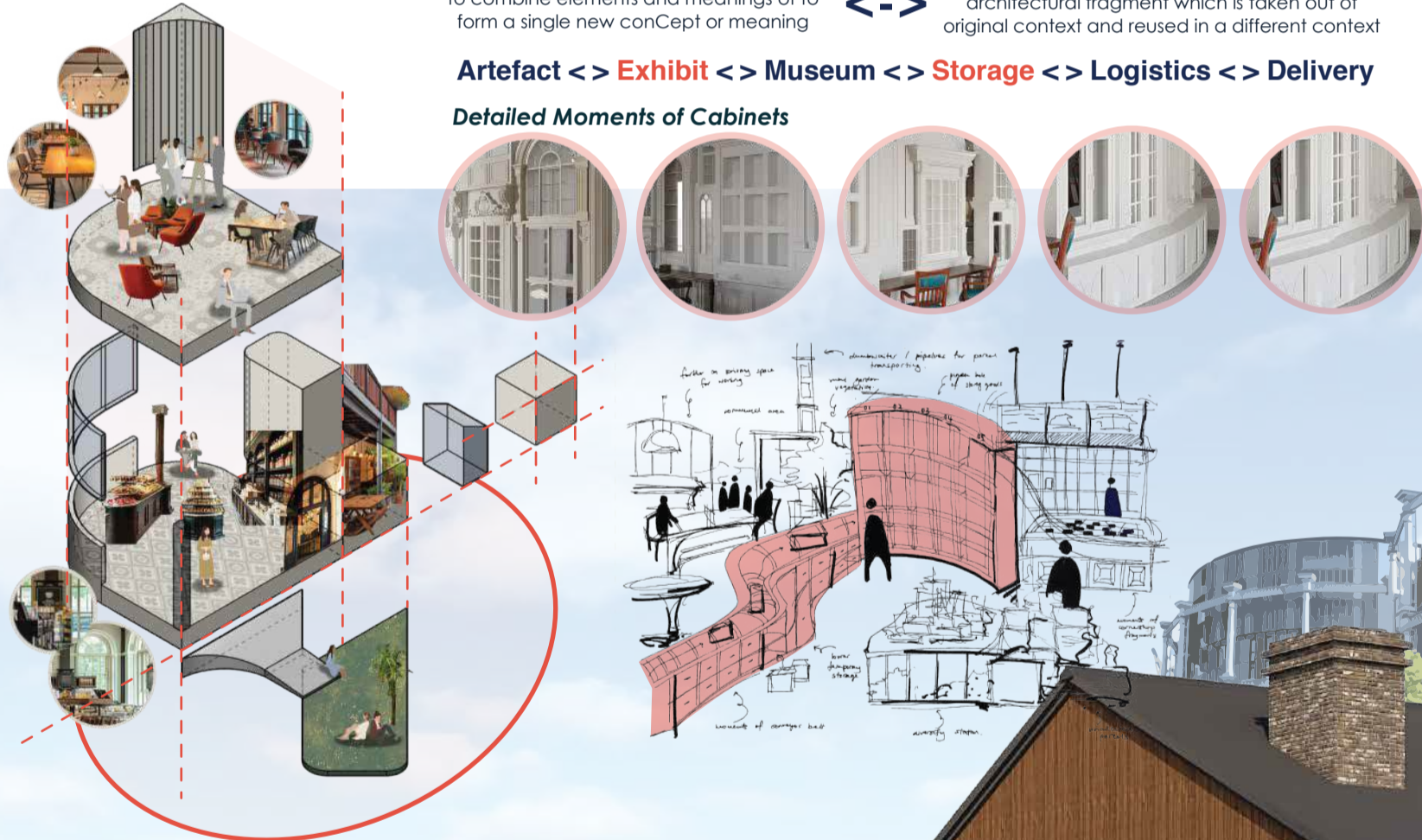
Ambition Space Design Model

**Portmanteau** to combine elements and meanings of to form a single new concept or meaning

**Spolia** architectural fragment which is taken out of original context and reused in a different context

Artefact <> Exhibit <> Museum <> Storage <> Logistics <> Delivery

Detailed Moments of Cabinets



Exterior Perspective in Coal Drops Yard



## Heritage Meets Innovation: Sustainable Interior Solutions through Spolia and Multifunctional Design

By relating the climate emergency to spolia and portmanteau design in interior architecture can be achieved by focusing on sustainable practices and innovative design solutions that address environmental concerns. Spolia involves the reuse of architectural elements from older buildings. This practice directly supports sustainability by reducing the demand for new materials and minimizing waste. Reusing materials can significantly lower the carbon footprint of construction projects. For example, in interior architecture, designers can incorporate reclaimed wood, bricks, tiles, and fixtures from demolished or renovated buildings. This not only preserves historical elements but also reduces the environmental impact associated with manufacturing and transporting new materials. Relating to resource efficiency, spolia helps conserve natural resources by repurposing existing materials. This is crucial in the context of the climate emergency, where resource depletion and environmental degradation are major concerns. Spolia addresses the issue of embodied energy, which is the total energy consumed in the production and transportation of building materials. By reusing materials, the embodied energy of new construction projects can be significantly reduced. For instance, in a renovated office space, incorporating old stone columns from a previous structure can save the energy that would otherwise be spent on quarrying, shaping, and transporting new stone.

Portmanteau design combines multiple functions into a single space, optimizing the use of resources and space. This can lead to reduced energy consumption and more efficient use of heating, cooling, and lighting. For instance, a living space that serves as a home office, gym, and lounge can minimize the need for multiple rooms, reducing the overall energy footprint of a home. Spaces designed with portmanteau principles can adapt to changing needs, reducing the need for frequent renovations and thus conserving resources. For example, modular furniture systems that can be reconfigured for different uses (e.g., work, dining, relaxation) can extend the life of interior spaces and furnishings, reducing waste and the demand for new materials. Portmanteau design often involves innovative combinations of materials and functions, which can include the use of sustainable or recycled materials. Combining spolia and portmanteau design can create durable and adaptable spaces that stand the test of time, reducing the need for frequent renovations and new constructions. Integrating historical elements through spolia with innovative, multifunctional design through portmanteau can create interiors that tell a story of cultural heritage and environmental stewardship.

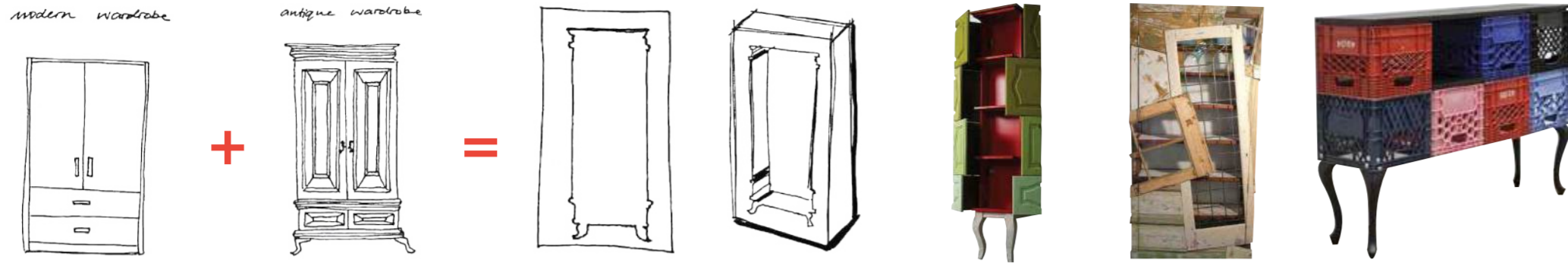
In summary, addressing the climate emergency through spolia and portmanteau design in interior architecture involves reusing materials to reduce environmental impact and creating multifunctional, adaptable spaces that optimize resource use and energy efficiency. These approaches not only contribute to sustainability but also enhance the cultural and functional richness of interior environments.



Section YY Perspective View

Potential Mechanical Device In Space

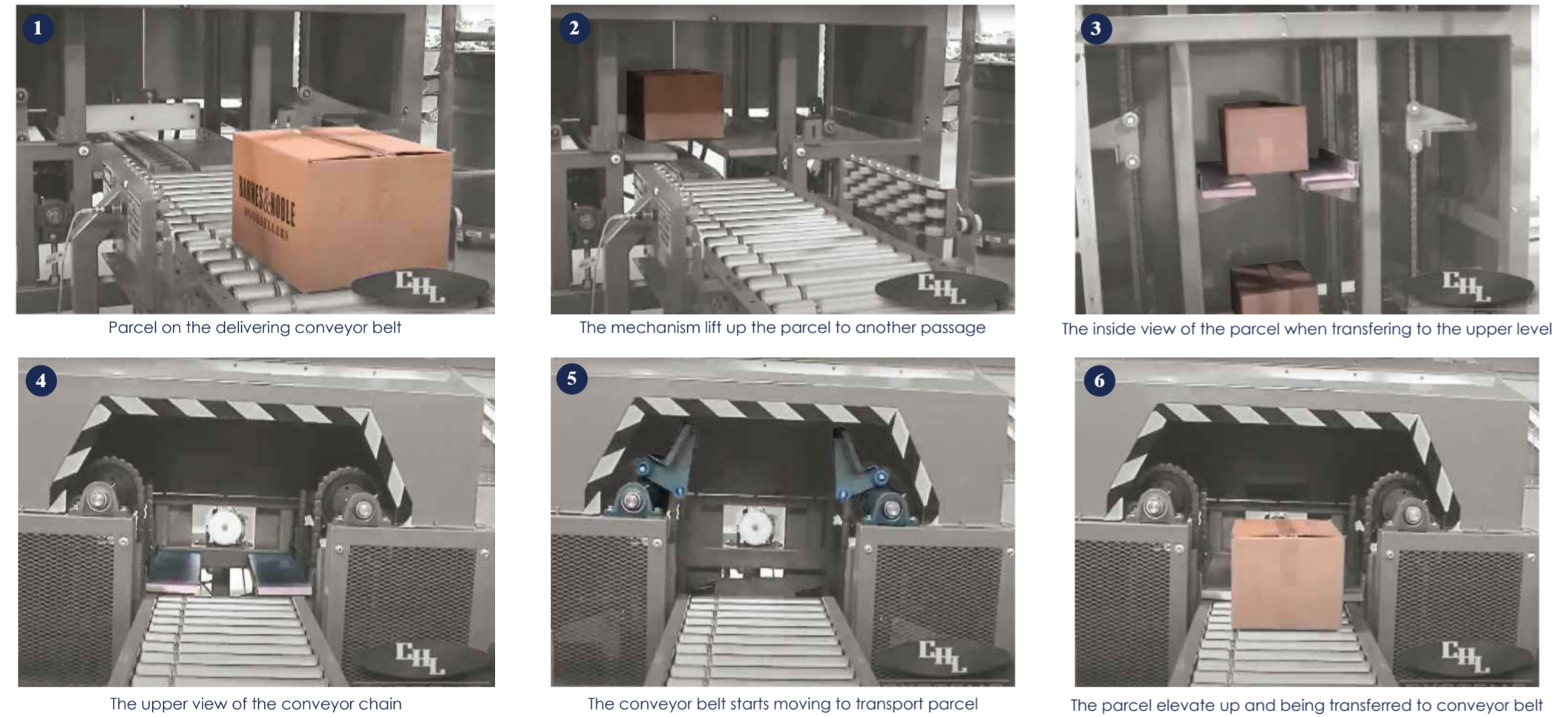
Device 01 - Chaotic Hybrid



Device 02 - Heritage Vending Machine



Parcel Elevating Conveyor System (Prototype)



Inhabitants



Business Nomad

**Alex**  
Alex works remotely as a freelance web developer. Always on the lookout for inspiring work environments, he discovers the coworking space while exploring the city. Impressed by its modern amenities and creative ambiance, Alex decides to spend the day working there.

Tourist

**Alix**  
Alix is a tourist from France who is passionate about photography and design. Intrigued by the coworking space's reputation as a hub for creative professionals, she decides to spend a day there exploring. She is inspired by the space's innovative design, which features spolia and portmanteau design inspired by demolished building facades, salvaged door and windows.

Freelance Designer

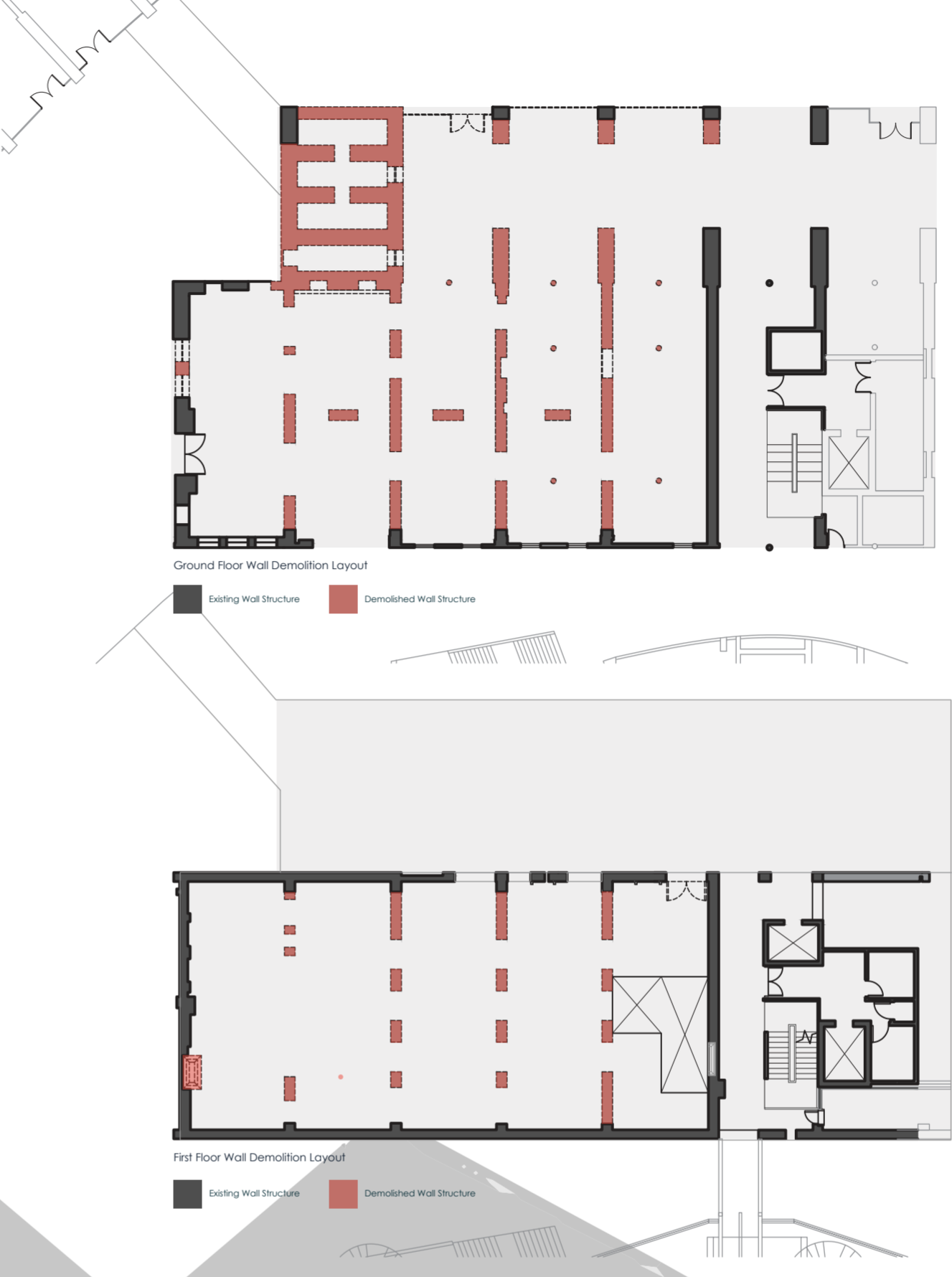
**George & Marcus**  
George & Marcus are pursuing a master's degree in engineering while also working part-time as a freelance graphic designer. With a busy schedule, they appreciate the flexibility of the coworking space, where they can focus on his academic research.

Travelling Couple

**Mark & Anna**  
Mark and Anna are a couple visiting from Italy, both with a passion for design and architecture. Intrigued by the coworking space's reputation as a hub for creative innovation, they decide to spend a day exploring together. Mark is a graphic designer, while Anna is an interior architect, and they appreciate the space's portmanteau concept design.

Concept Layout Development

Demolition Layout



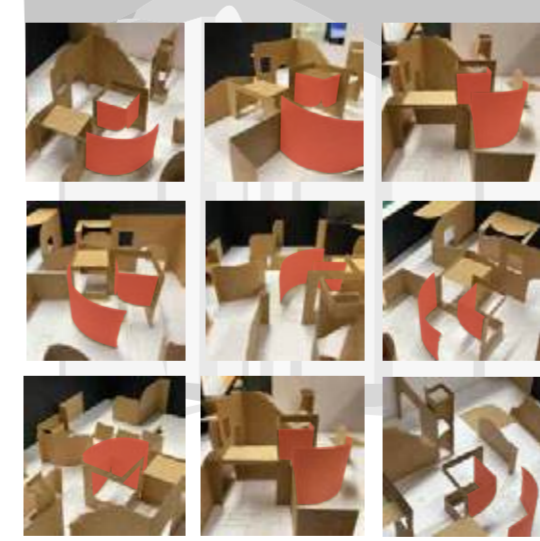
**Draft 01**  
red symbolizes the private spaces, whilst green symbolizes the public space and outdoor space.



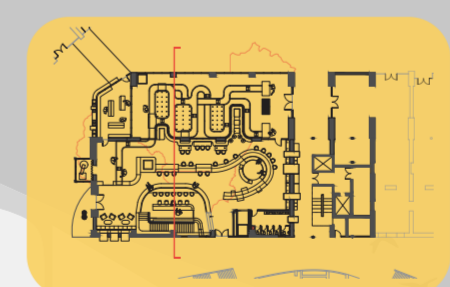
**Draft 02**  
blue symbolizes the working space whilst the orange symbolizes the social ground.



**Draft 03**  
red symbolizes the private storage space while the green area symbolizes the public access area for exhibition.



Maquette Model

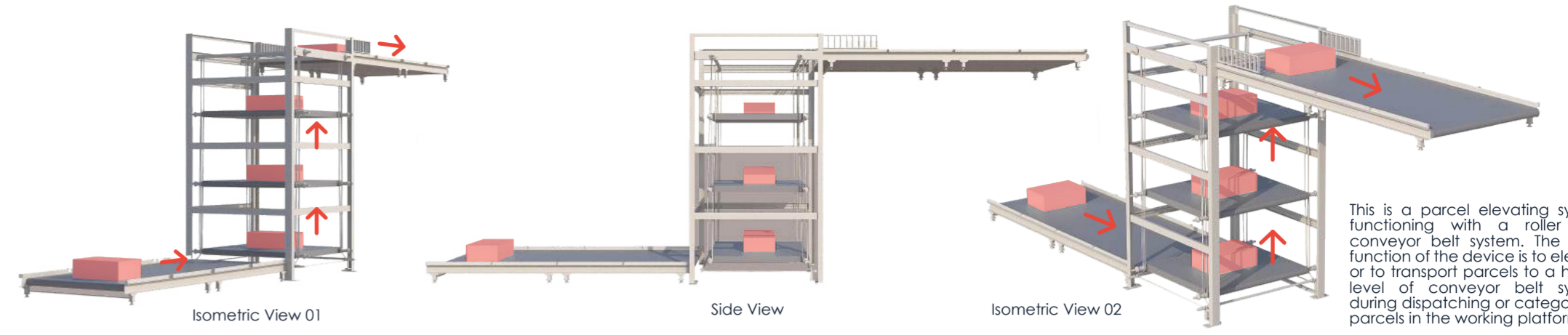
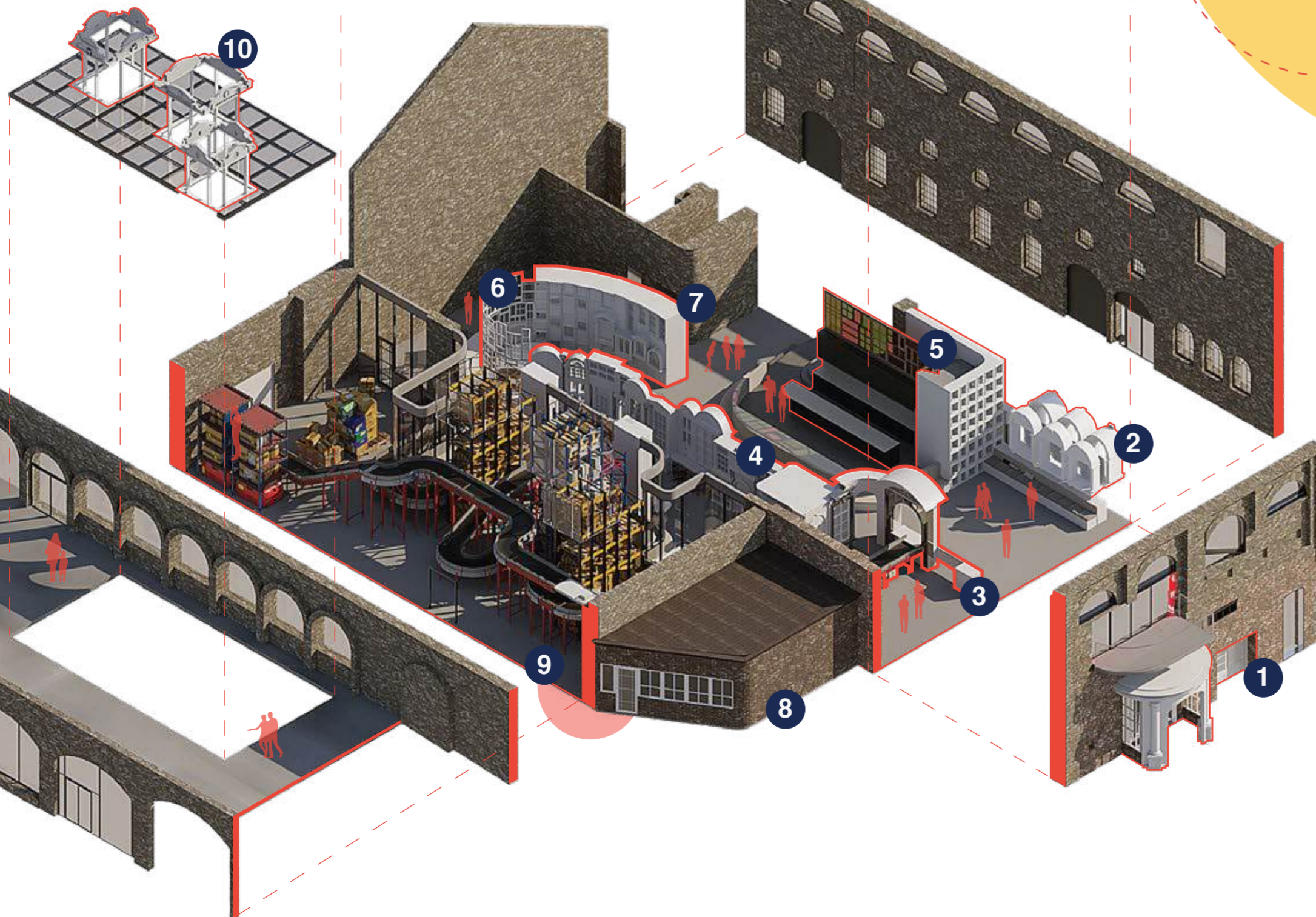
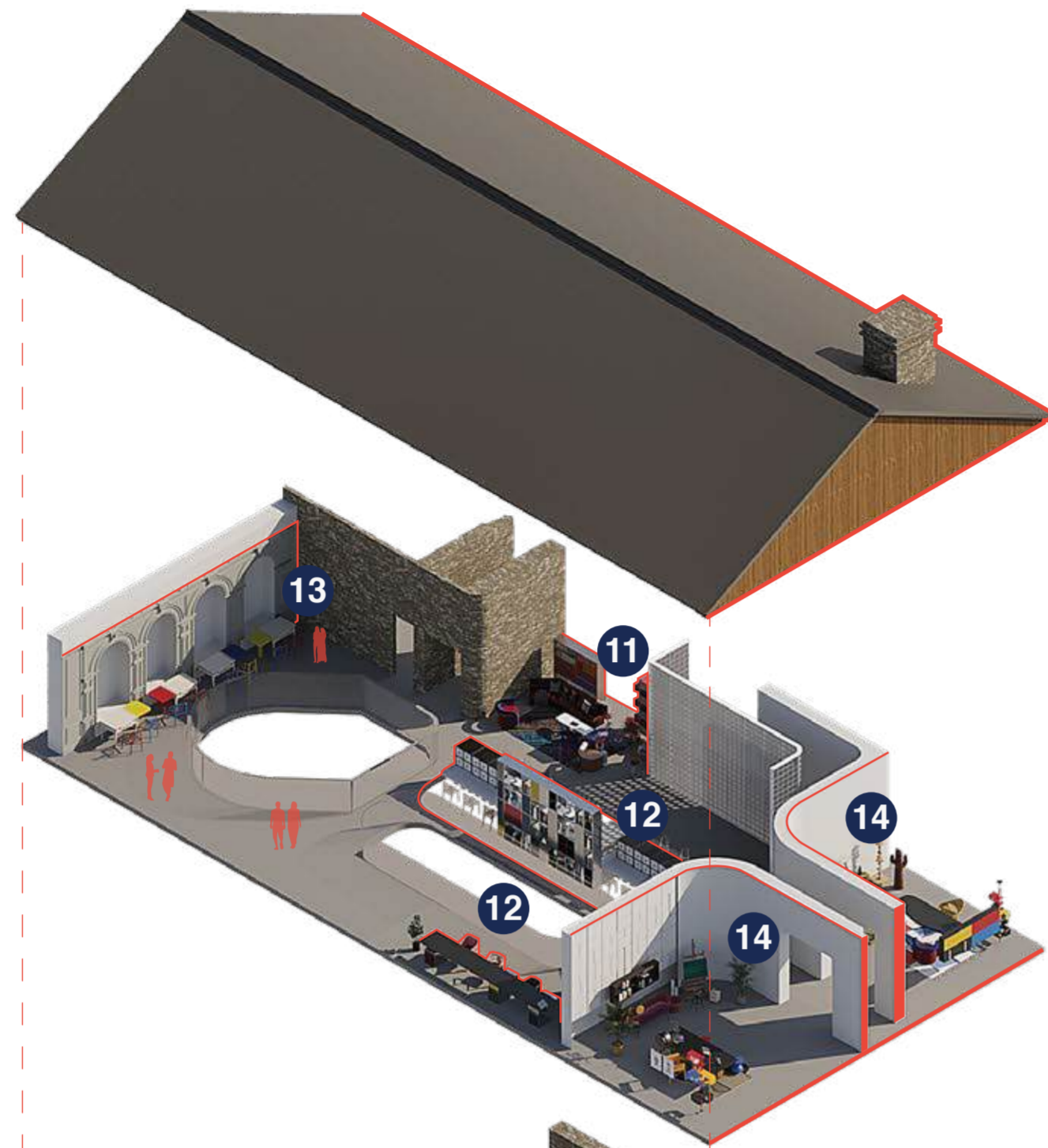


Section XX Perspective View

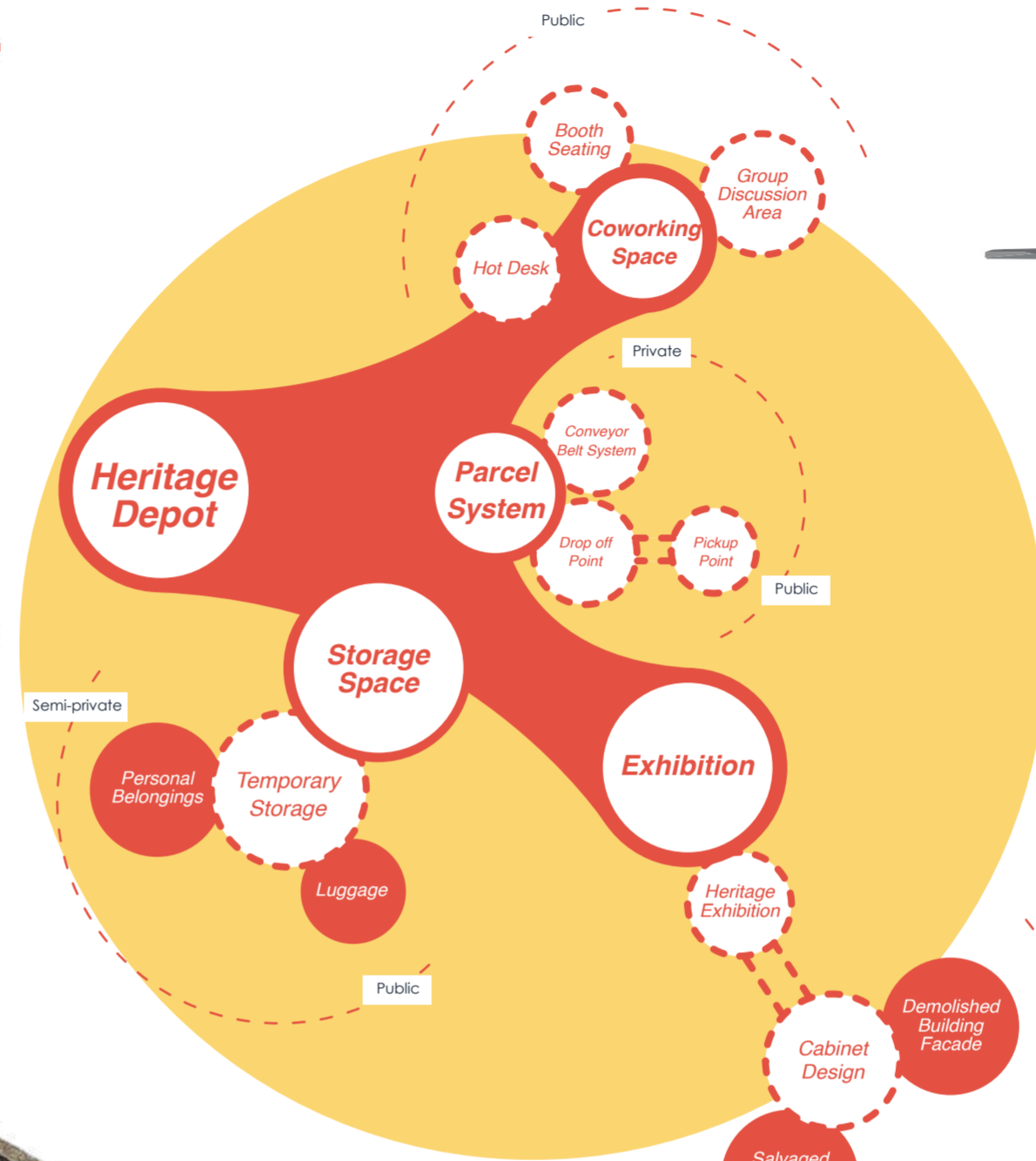
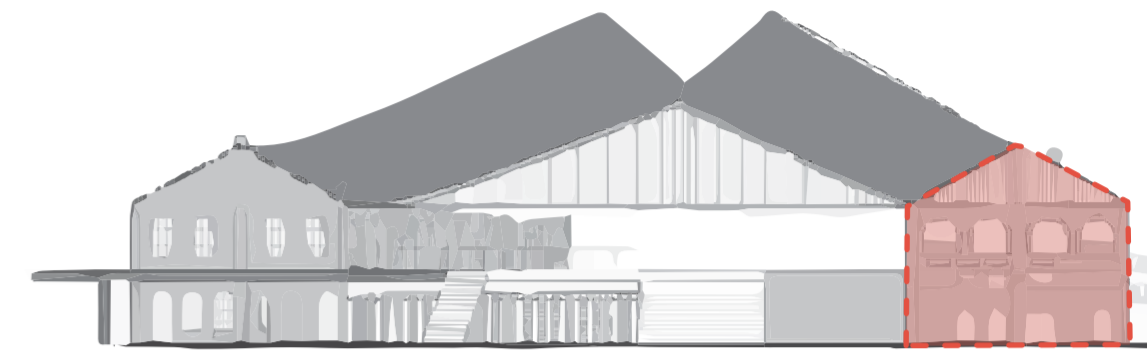
# Isometric View

## ISOMETRIC VIEW GROUND FLOOR

1. Main Entrance
2. Lounge Area
3. Parcel Collection Point
4. Hot Desk Area
5. Cafeteria
6. Leisure Area
7. Cabinets of Curiosity Lane
8. Corner Shop
9. Conveyor Belt System
10. Pop-up Display Area
11. Relax Chatting Area
12. First Floor Hot Desk Area
13. Group Discussion Area
14. Private Office



This is a parcel elevating system functioning with a roller and conveyor belt system. The main function of the device is to elevate or to transport parcels to a higher level of conveyor belt system during dispatching or categorizing parcels in the working platform.



### I. Storage needed

There is limited temporary storage space that could be founded in the neighbouring hood space. The proposal of this storage space to the public users and residents of the space is to provide them a safe and secure space for temporary storage to store personal belongings.

The users can pay at the automachine station to access to the storage space.



### III. Coworking spaces for talented community

This is also a space welcoming business startups, talented community or even students to work inside the space. This is inspired by Camden Collective where they help this minor community to develop their career by providing a comfortable space for the community to focus on their professional field.



### II. Cornershop concept-based space

This is a new concept which slowly replace post office where parcels are collected and dropped off. This space is convenient for residents around neighbourhood or even public users around Coal Drops Yard to pick up and drop off parcels. In order to maximize the efficiency of parcel collection and drop off process, a functioning conveyor belt system is a solution to go for.



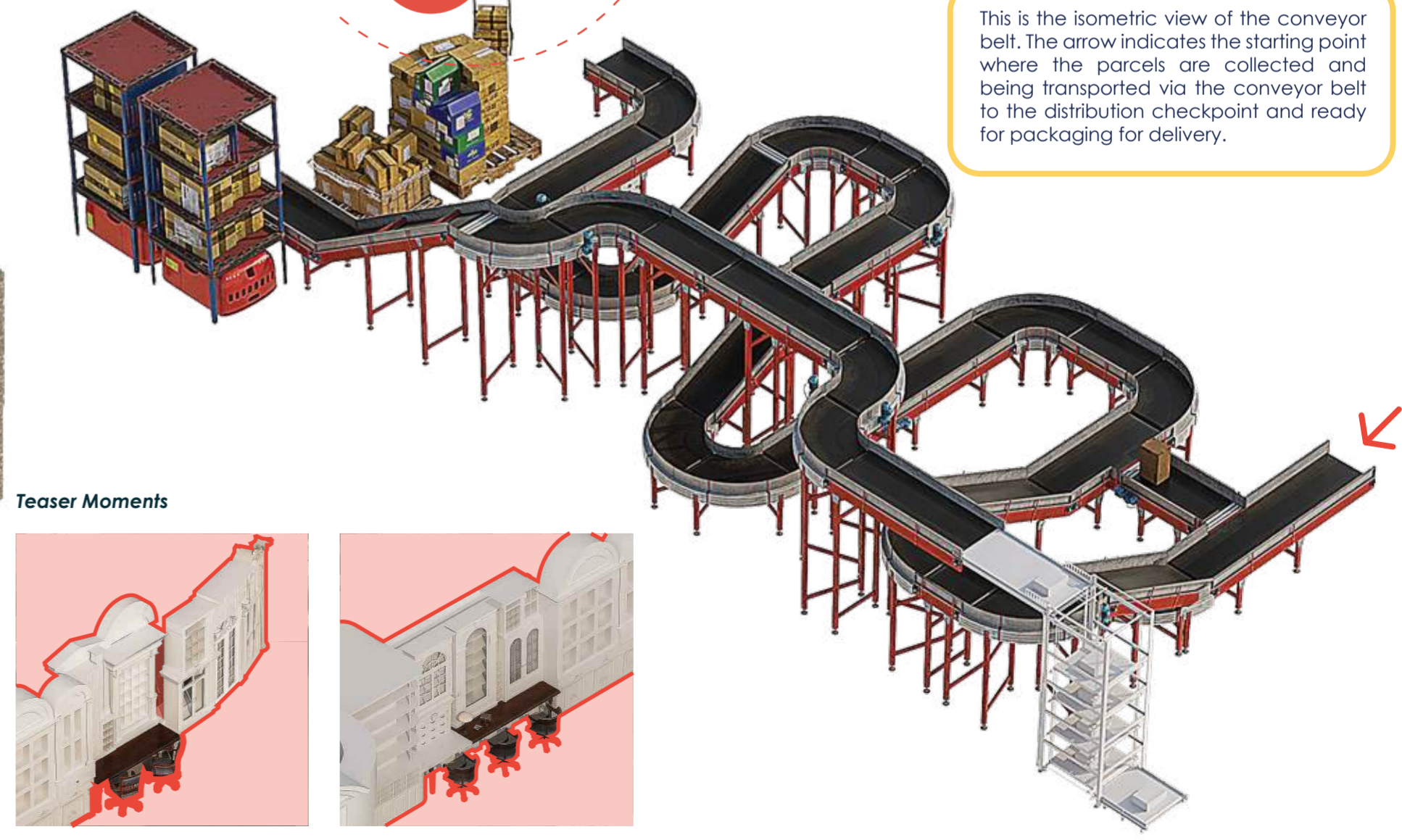
### IV. Heritage exhibition

Around Coal Drops Yard there is limited space to showcase or to appreciate the heritage history around the neighbourhood. Hence, inside the interior space, the design of the cabinets for storage purpose are inspired by the demolished building facades, salvaged doors and windows.

This is another creative method the remember the our past heritage and history with an aesthetic and functional way at the same time.



This is the isometric view of the conveyor belt. The arrow indicates the starting point where the parcels are collected and being transported via the conveyor belt to the distribution checkpoint and ready for packaging for delivery.



### Teaser Moments

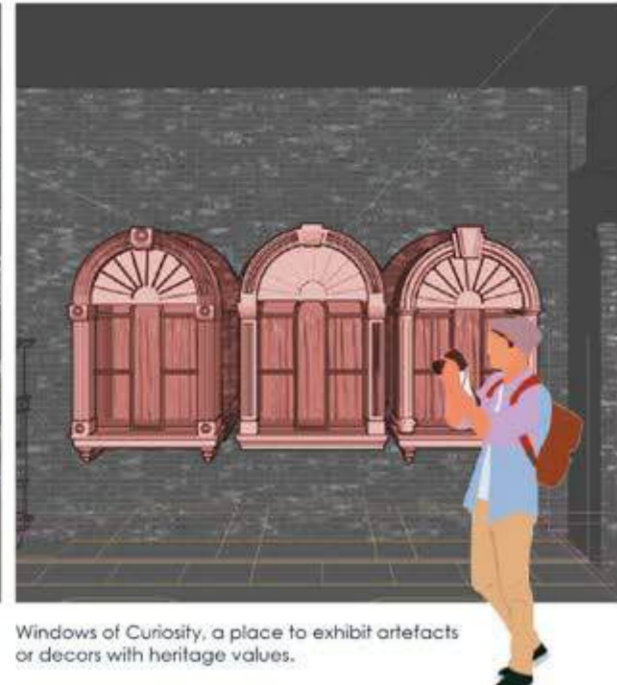


# Design Proposal

## Storyboard



Parcel collection point, a place where people can drop off their parcels they wish to deliver.



Windows of Curiosity, a place to exhibit artefacts or decors with heritage values.



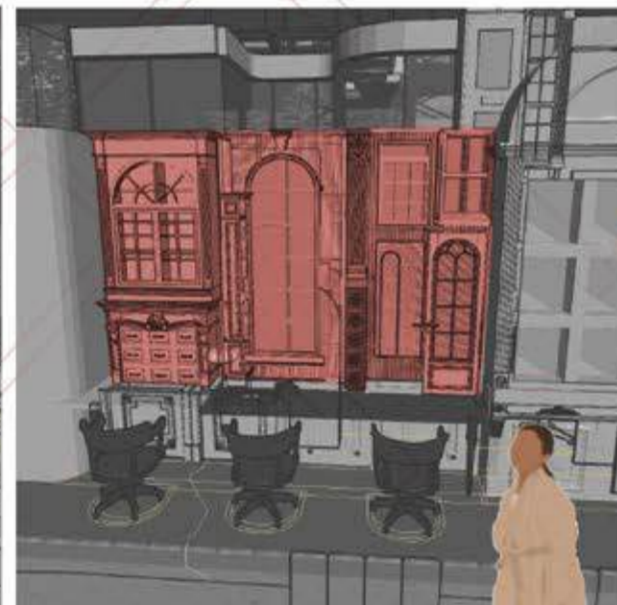
Cafeteria, a place where public can come over inside to have a sip of coffee and fast snacks.



It is also a perfect spot for people who work inside this space to have a chill time after hard work.



Inside the private space, where the conveyor system locates, is where the workers distribute and categorize parcels.



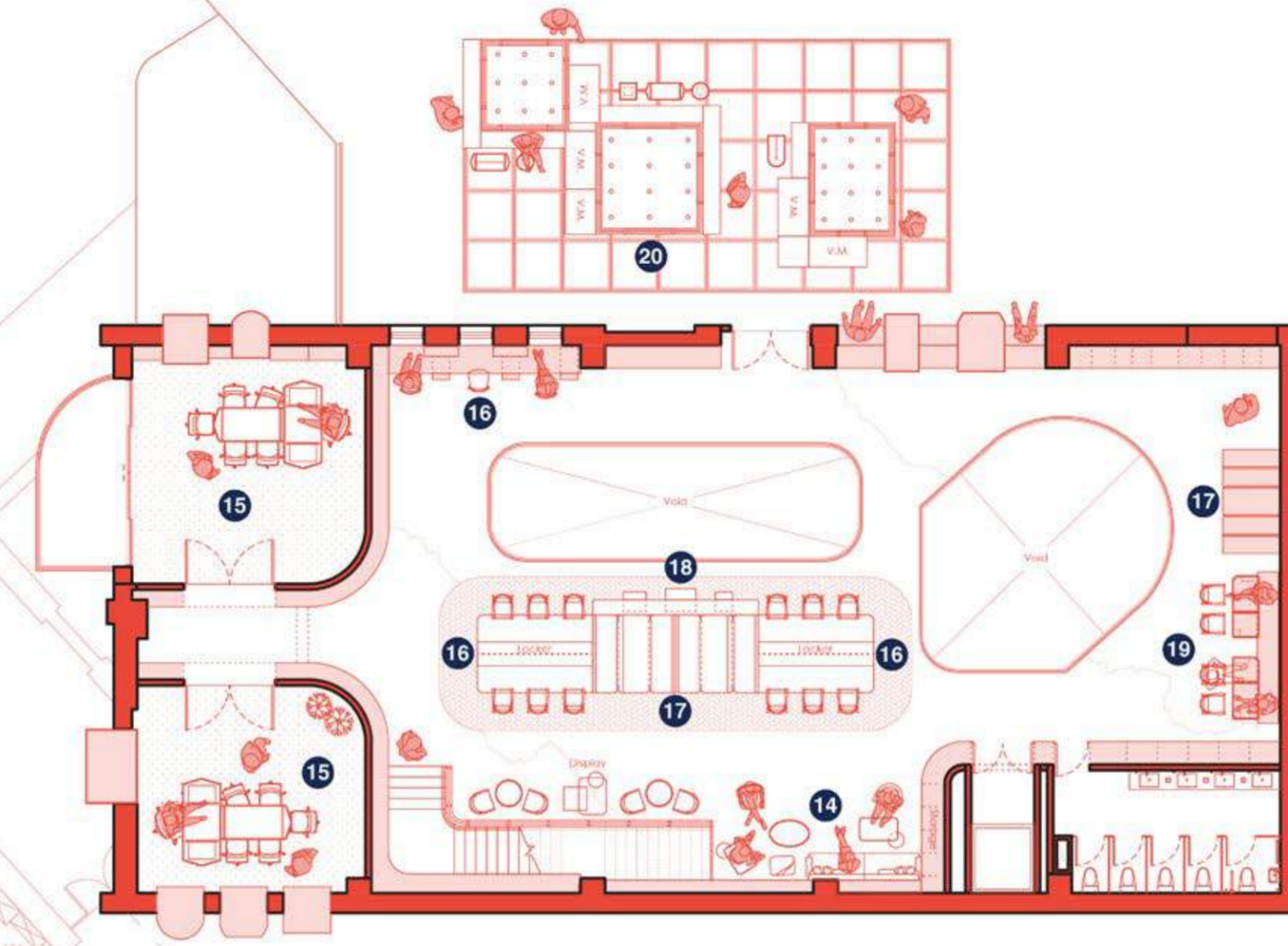
Hot desk area, a perfect place suitable for people to work on their projects or students to study.



This space is also designed for temporary storage.

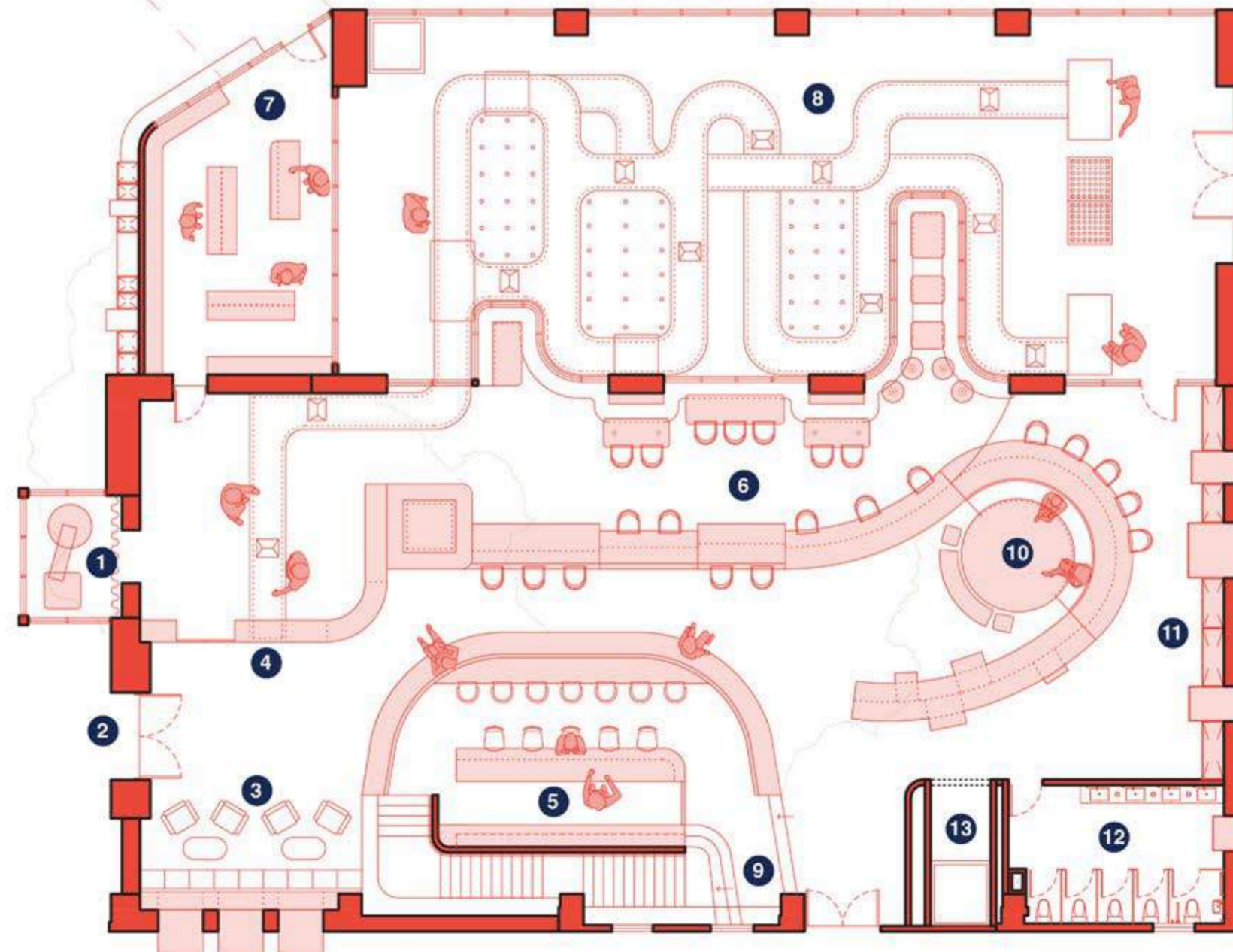


The design of the cabinets are inspired by the salvaged doors, windows, facades of a building structure.



First Floor Furniture Layout

- FIRST FLOOR**
- 14. Relax Chatting Area
  - 15. Private Office
  - 16. Hot Desk Area
  - 17. Booth Seating Area
  - 18. Display Area
  - 19. Group Discussion Area
  - 20. Pop-up Display Platform



Ground Floor Furniture Layout

- GROUND FLOOR**
- 1. Teaser Exhibition
  - 2. Main Entrance
  - 3. Lounge Area
  - 4. Parcel Collection Point
  - 5. Cafeteria
  - 6. Hot Desk Area
  - 7. Cornershop
  - 8. Conveyor Belt Working System
  - 9. Staircase (Access to first floor coworking space)
  - 10. Leisure Area
  - 11. Locker and display cabinet
  - 12. Toilet
  - 13. Lift



# Spolia & Portmanteau Moments



**Hot Desk Area**

This is a hot desk area moment where people are working on their assignments. The cabinets in front of them are personal temporary storage space.



**Hot Desk Area**

This is another hot desk area moment where behind the users inside the space can enjoy the conveyor belt system view.



**Hot Desk Area**

This is the another perspective view of hot desk area, where the divider designs are inspired by the salvaged windows and doors.



**Temporary Storage Space**

This is the another perspective view of temporary storage area, where the cabinet designs are inspired by the salvaged windows, doors and demolished building facades.



**Leisure Area**

This is the leisure area where people in a group can have a time to relax and interact with the public community inside the space.



**Leisure Area**

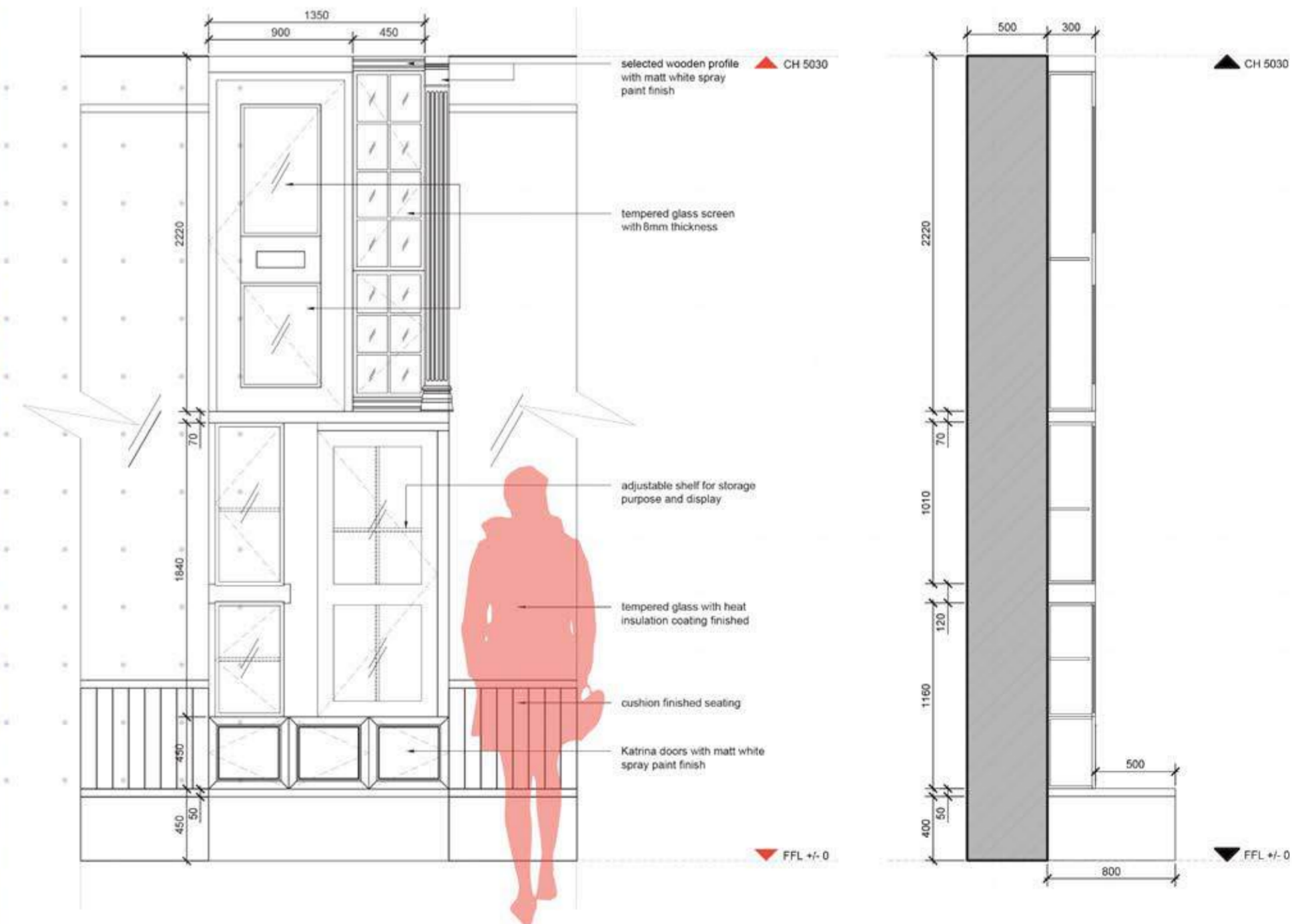
This is the another perspective view of leisure area. The round table can be a gathering spot for friends to hang out inside the space.



**First Floor Hot Desk Area**

This is the first floor hot desk area, where the windows in front of the desk gives a good natural light penetration inside the space.

## 2D Device Detail Drawing



This is the detail drawing for one of the storage and display cabinet designs inside the space. The design of the cabinet has combined salvaged doors, replica column works and classical wood panel designs.