

Permeable Territories.

Brief: The brief is to transform the library for 2033 and create permeability territories between the Librarian and a resident working in the library, the Alchemist.

Child's hill library, located on Cricklewood Lane, London, is supported by a Jewish charity, Kisharon. The library offers services like warm hubs, conversation cafes, workshops, and activities for children.

The concept is to create a visually invigorating space and create layers of foraging. Foraging is about being curious and exploring to find something interesting and useful. Throughout this project, I

explore the notion of foraging architecturally. The intention is to make people go through a journey of stopping, looking, observing, preserving, being in a state of awe, and exploring space. To achieve this, I aimed to create a juxtaposition between the Alchemist and the Library, creating layers of foraging, drama, reveal, sudden disruption, and illumination and announcing the library as the current mock Tudor facade feels out of context.

The library consists of Alchemist's working space, Library, a Making area for gardening and making teas, and an Archive to store books, and experiments done by the alchemist and the people in the Making Area.

Keywords: Layers of foraging, drama, sudden disruption, illumination, reveal, announce.



Mock Tudor Facade.



Main Space.



Reception.

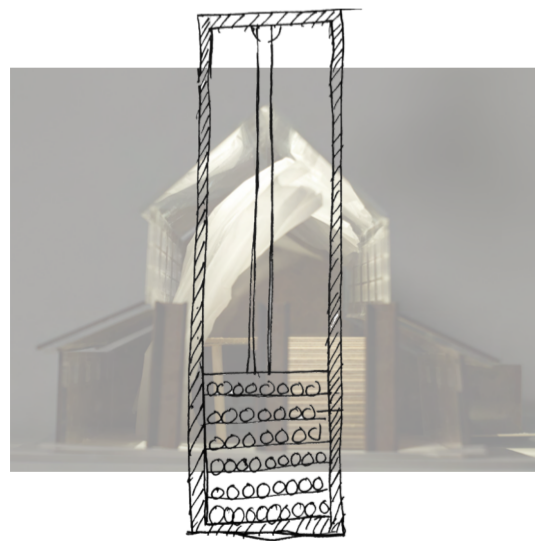


Soup for Warm Hub.

The main space has high ceiling and receives ample sunlight throughout the day. The reception desk has wealth of information about supporting people during difficult times and provide classes and workshops to improve english language skills. There's a lot of care and

energy in the room and it shows that the library genuinely wants to provide support and space for everyone. My feelings and analysis informed my decisions for choosing materials for all of the spaces.

Initial Sketches.



Hydraulic glass lift filled with experimental petri dishes done by the alchemist as the first layer of foraging.



High Ceiling.



Utilitarian Space



Foraging for plants.

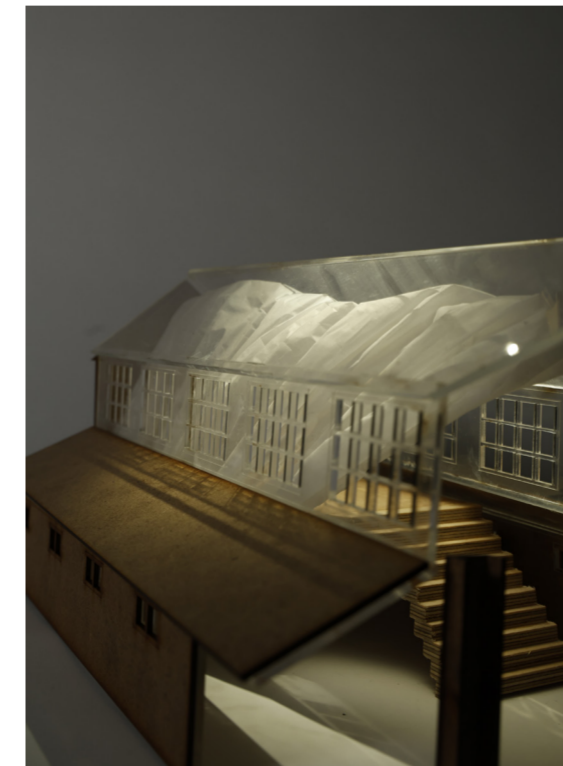
Atmospheric Model.



Making Area.



Curved staircase leading you to the making area.



This model represents the atmosphere of the Library and the design intent. The model shows the juxtaposition between the rigidity of bookshelves and glass and the fluidity of the illuminated nylon fabric. The bookshelves blocks and reveals the illuminated fabric whereas, the fabric provides drama while creating a soft space.



Models exploring illumination, spectacle, layers, announce, drama, compression and decompression.

The concept of foraging originated from the Alchemist's habit of foraging through plants to use in her experiments and my experience reading an architectural magazine. When I forage through an architectural magazine my eyes keep moving from

one point to another because of the visual hierarchy of the images, text, and colour. This inspired me to achieve the same experience for the library as at the moment the library feels outdated and does not engage people.



Personal experience and thoughts about library.



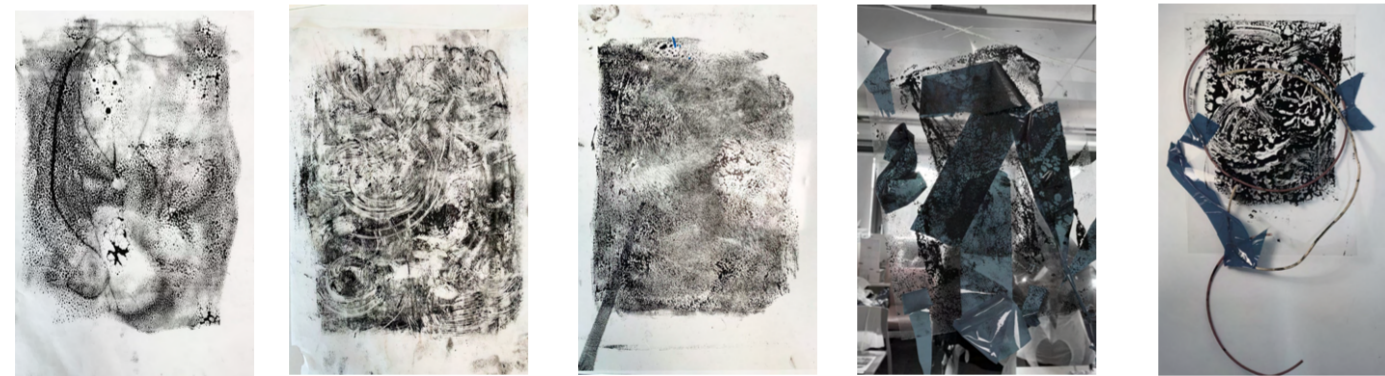
Foraging through an architectural magazine.



Seating between the bookshelves to provide privacy and intimacy with the books.

Prints and Models.

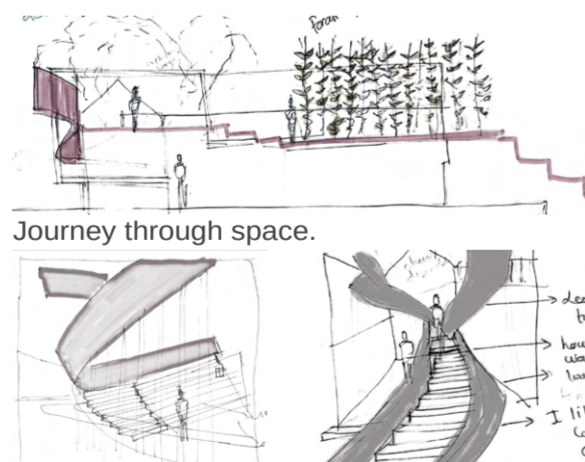
Before creating my atmospheric model I followed a process of creating prints and then converting them into models to explore my keywords.



Prints were created in response to the Alchemist's nature of experimenting and creating noise, announcing, and spectacle.



Copper model to create dynamic floor levels and connect the two spaces the Alchemist and the Making area.



Journey through space.

Sketch over copper model.

Drama.



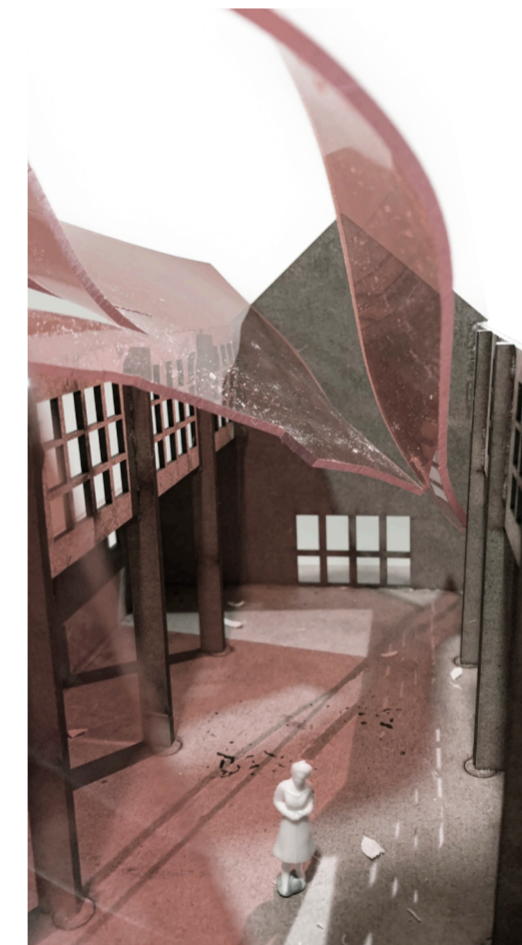
Sudden colour and accentuating high ceiling



Spectacle which causes people to stop and admire.



Extending out of the building to announce the building

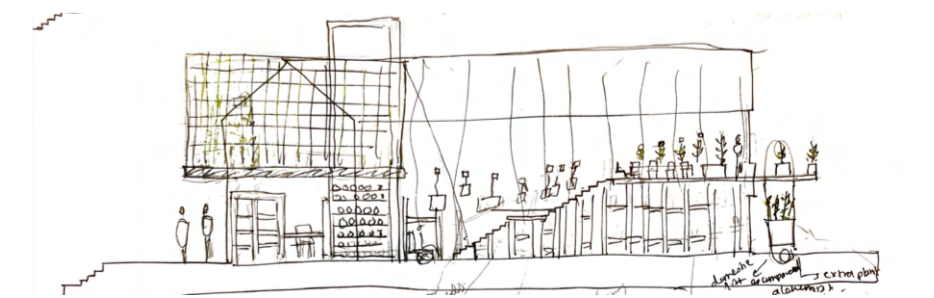


Fluidity vs rigidity of the building.



Compressed at arrival and then the space opens up to reveal light and drama.

These models and qualities were then used to design the library and make material choices. Further sketches were done on plan and section to achieve a cohesive design.



Final iterated section.

First Layer of Foraging - Alchemist causing a spectacle and disruption in the space.

The Alchemist's Space is at the front announcing the building with her plants and her space is made out of borosilicate glass which slightly blurs her plants and gives her privacy. Bookshelves are placed at the front and create a sense of enclosure. When the alchemist comes down in her illuminated lift it causes a spectacle in the space which makes

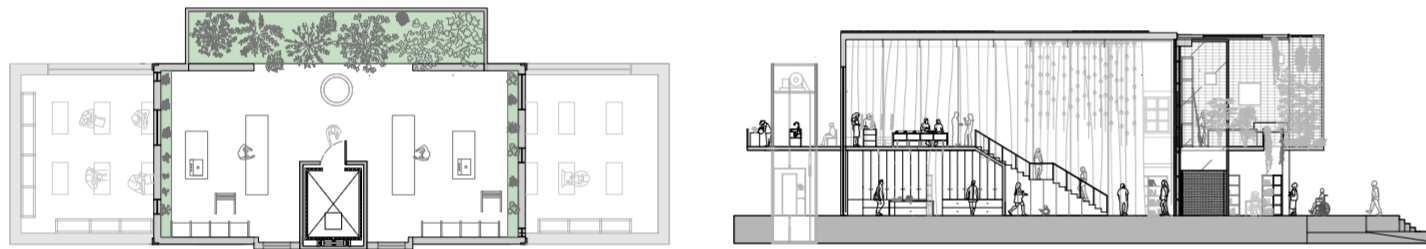
people stop, observe and forage around and inside her lift to learn about alchemy and experimenting. The lift is ever-changing as it keeps filling with petri dishes and has marks from her experiments. The lift also sparks conversation between the Alchemist and people furthermore, people can enter her space if she permits.

Material Palette.



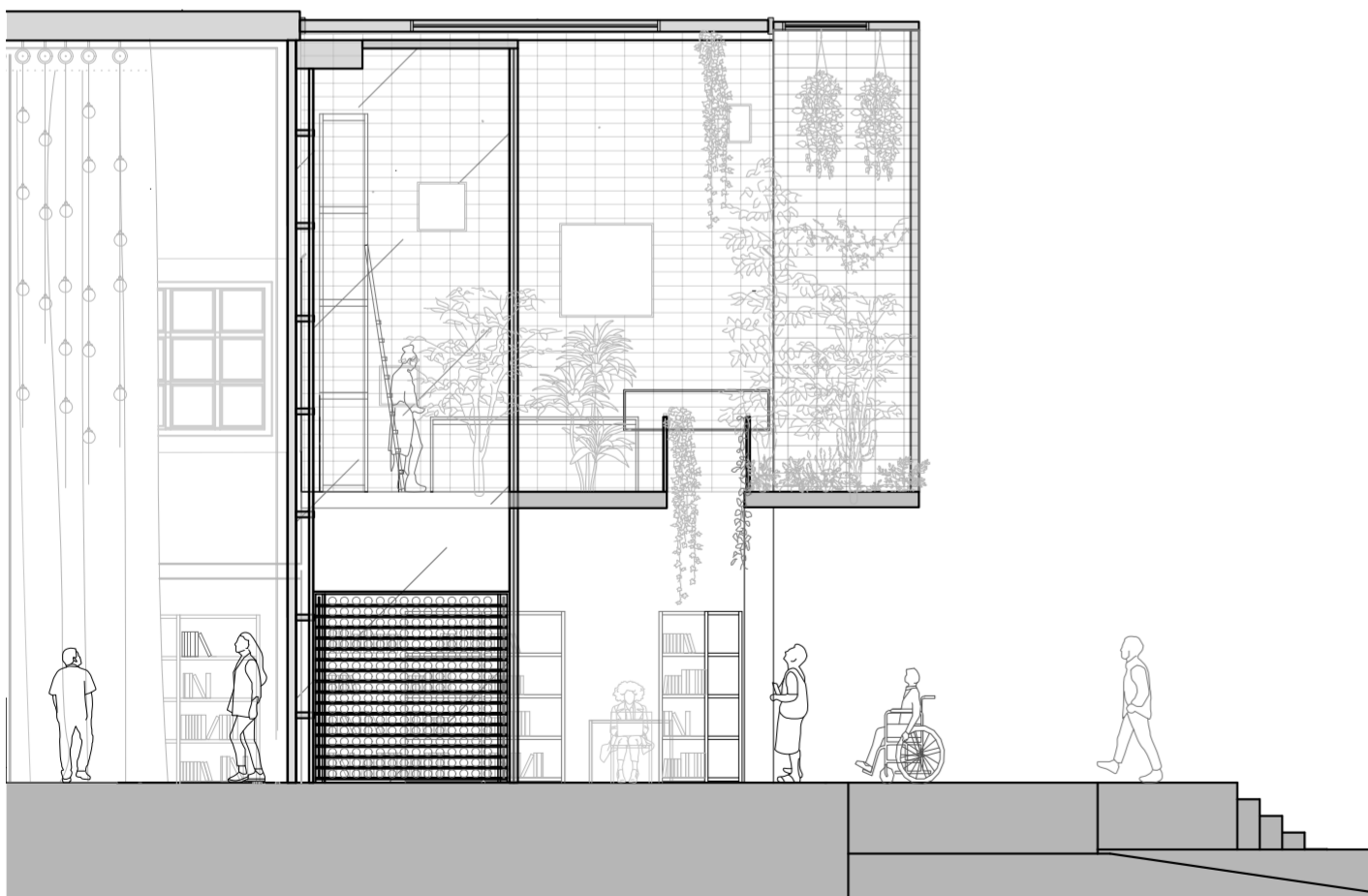
Material Palette is arranged three dimensionally.

Orthographic Drawings.



Alchemist experimenting between the lift and using the lift to store her experiments.

Section.



When people arrive they are compressed and the void on the Alchemist's floor allows for a peek into the space and filters out light and plants. The threshold is constantly changing as the plants grow and the lift comes down unexpectedly. The Alchemist is off limits which makes her seem mysterious, keeps people intrigued and encourage them to forage through her lift.



Material Palette arranged three dimensionally to show reflections of borosilicate glass.



Illuminated lift.



Illuminated lift filled with petri dishes.

Second Layer of Foraging - The Making Area.

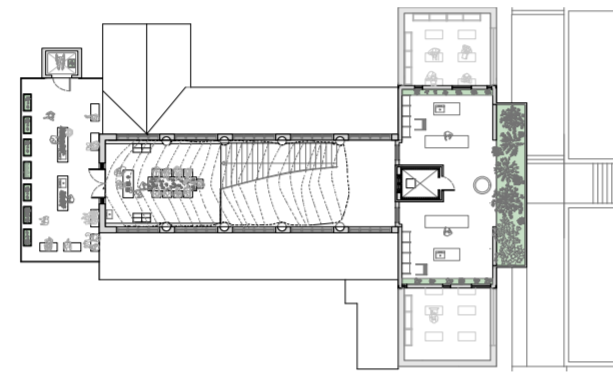
After foraging the lift and bookshelves people come across the illuminated nylon fabric. The fabric is an architectural lighting installation that covers the growing and making area providing drama while adding softness to the space. The creases of the fabric encourage people to feel the fabric and the making area is about learning by doing therefore, the creased fabric reinforces the concept of the space. There is a juxtaposition between the fluidity

of the fabric and the glass lift. The two spaces have different personalities, but they connect due to the hanging terrarium. The terrarium is where the Alchemist and people store their experiments and outcomes from the making area. When the terrarium gets full the objects move to a hidden archive underneath the making area. The terrarium is ephemeral and ever-changing.

Material Palette and Plan.

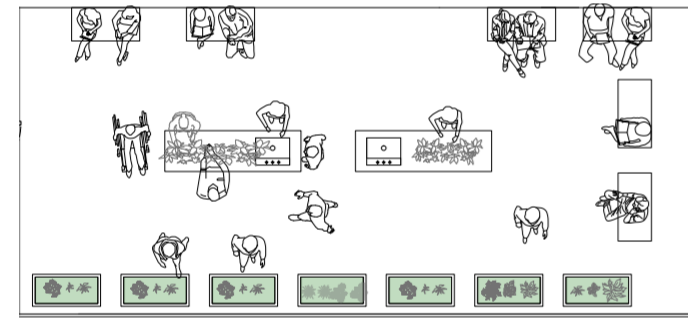


Material Palette is arranged three dimensionally.

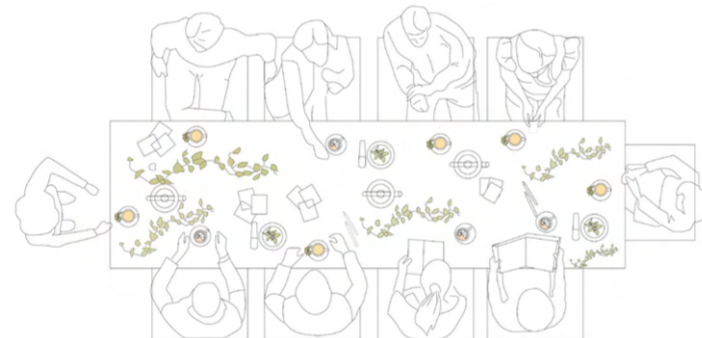


First Floor.

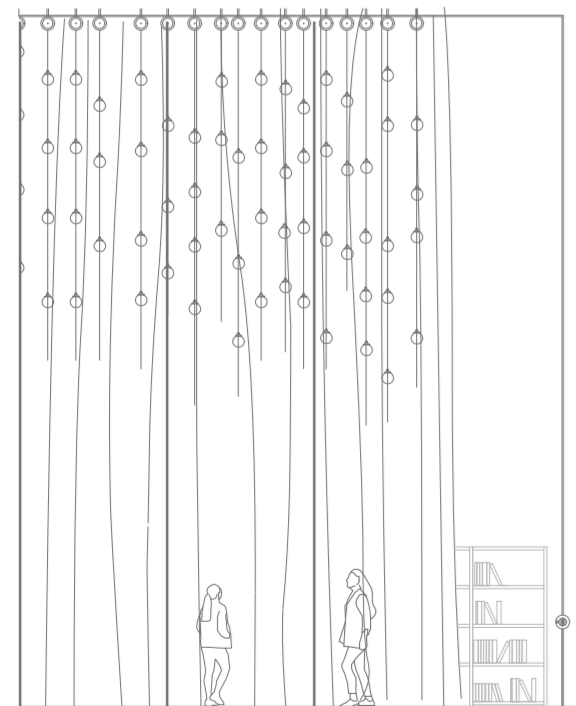
Activities and Construction of the Fabric.



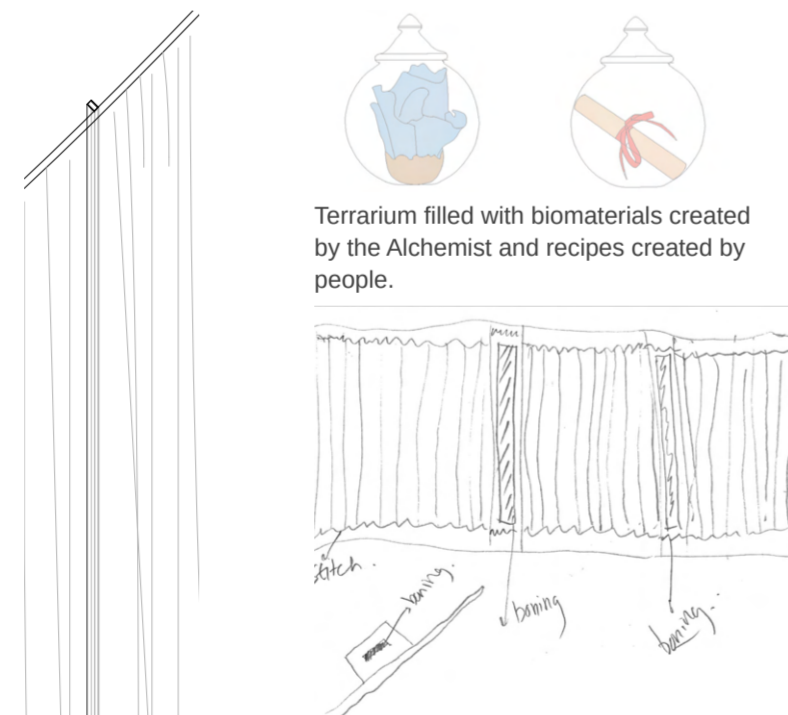
Gardening area is placed outside on a balcony. People learn how to grow plants and then how to use them for teas and experiment with them.



Crushing plants, making teas, conversing, free writing, writing recipes on how to use plants and sharing them with people. Any outcomes are then stored into the terrarium.



Terrarium is supported by pulleys and to bring the terrarium down people use the wheel on the right.



Closeup of encasing the boning to give strength to the fabric. Fabric is cut on the bias to achieve drapery and then stitched to keep the drapery intact. Boning is installed in the encasing at regular intervals.



Nylon fabric covering the Making Area.

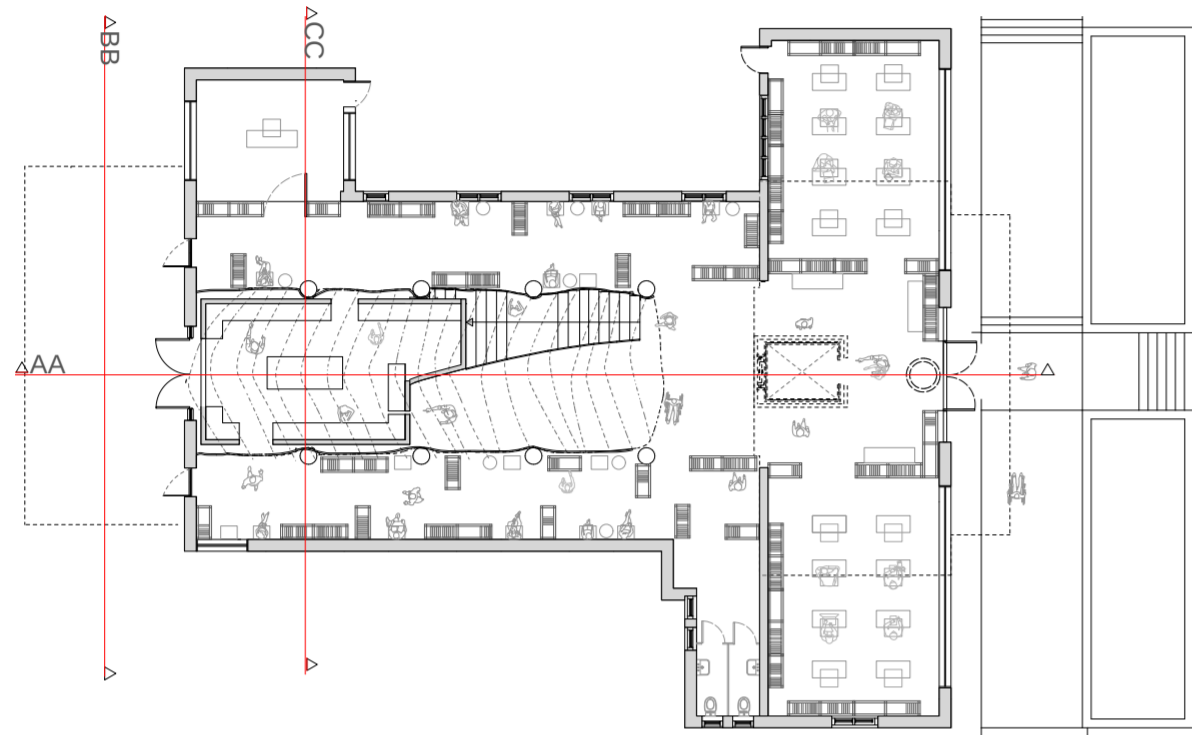


Bookshelves placed behind the nylon fabric.

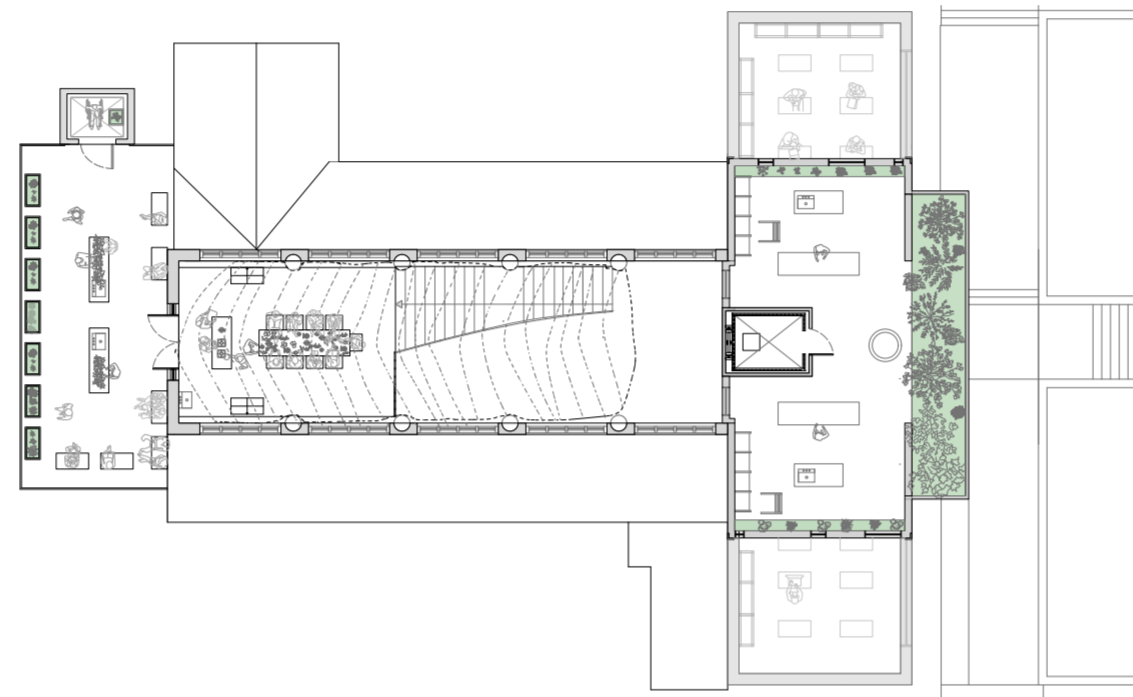


Plants harvested, washed and ready to use to make teas and try different recipes.

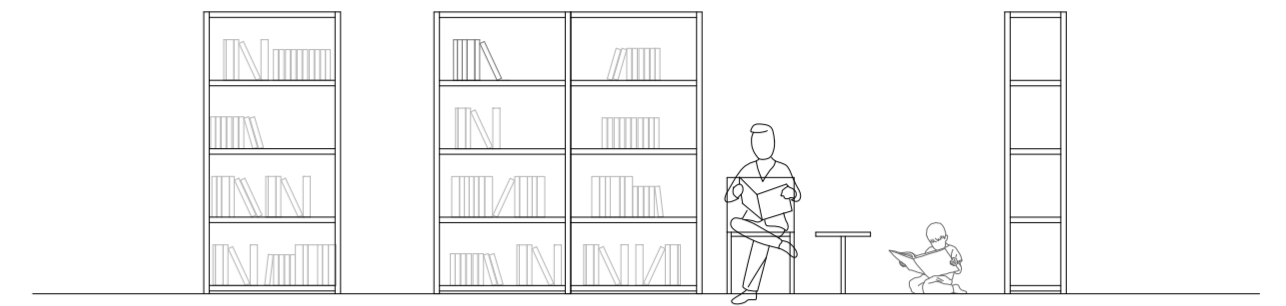
Orthographics Drawings with all Layers of Foraging.



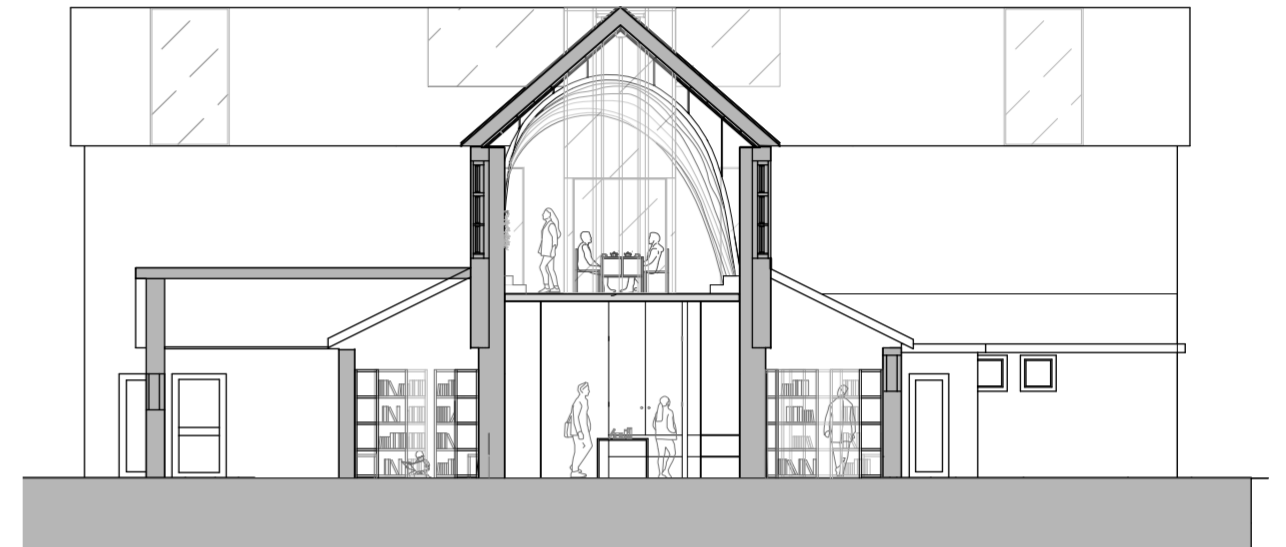
Ground Floor plan. Foraging through bookshelves to go the hidden protected archive.



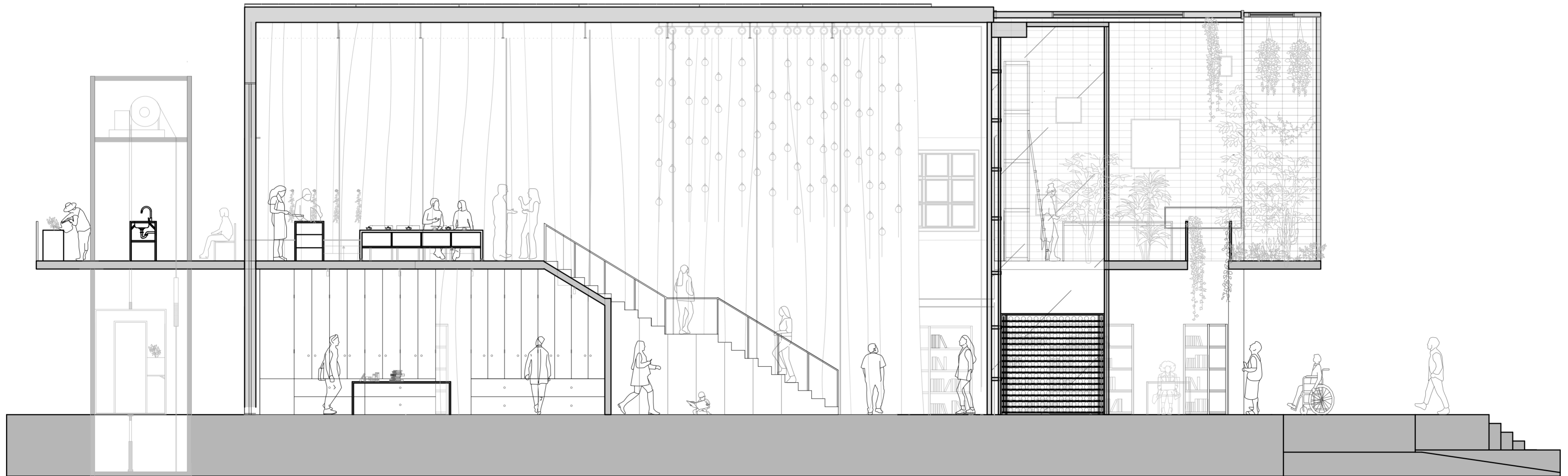
First Floor Plan consists of Alchemist's space, Making and Growing Area and architectural light fitting.



Seating between the bookshelves.



Section CC.



Section AA.

Archive hidden underneath the Making Area.

Hanging Terrarium above the staircase.

Bookshelves behind the Nylon Fabric.

Alchemist's space and hydraulic glass lift