

# THE POROUS OFFICE • THE SENSORY COMMUNITY

The task was to explore the future of the workspace though a client and spacial typology selected from a list of options. The design proposals explore the future workplace as a complex environments that overlaps not only with our domestic lives, but also with the civic space of the city. The intention of the sensory experience and stimulation is communicated with the short video and the final proposal is presented through a series of orthographic drawings.

INTENTION

The sensory community offers a **halfway home** to **young adults with neurodevelopment disorder** who find the wall between the childhood home and the **future of independence** wide and hard to overcome. By considering **stimulation, decompression, sequence** and **compartmentalization** the space gives the users **control** of their environment to make that wall more porous while still offering a safe support space. Here the user can find their independence and **take place in the wider community**.

The porous connection between the neurodiverse residents and the community is achieved through a mentoring program. Each resident are assigned a mentor and get a chance to see the inside of their profession and work experience. The staff works in the background supporting that connection and also support the residents in all the challenges of independent living not related to the workspace.

The sensory stimulations of the city and the community inside the building is **filtered** through the design. The **users control** the level of filtration and throughout the building the sensory zones changes and brings the users closer and further away from the city and the people in the community around them. The independent structure of the interior is enclosed in a membrane separating it from the existing building. Within the membrane the space is divided by layers of fabric, raising to makes space for the activities in the space and lowering to enclose the residents.

The spaces are divided on five floors, independent from the exterior walls and resting on the buildings existing structure, allowing the stimulations to travel through. The sequence of curtains are enclosing the space the users inhabit and are raised up to create a transition route though. The residents private living spaces holds its own transition space, reached from the top of the building.

VIDEO

Sensory experience of the stimulations of the sensory community. The stimulations are filtered through the interior and gives the residents control of the atmosphere around them.

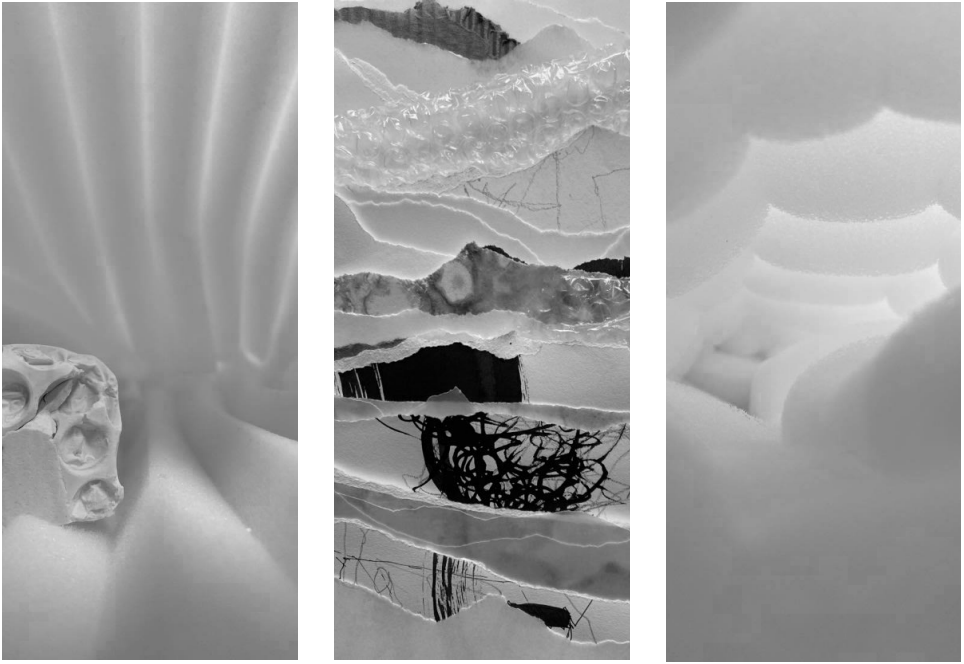


[https://youtu.be/\\_FqXlyiCFzw](https://youtu.be/_FqXlyiCFzw)





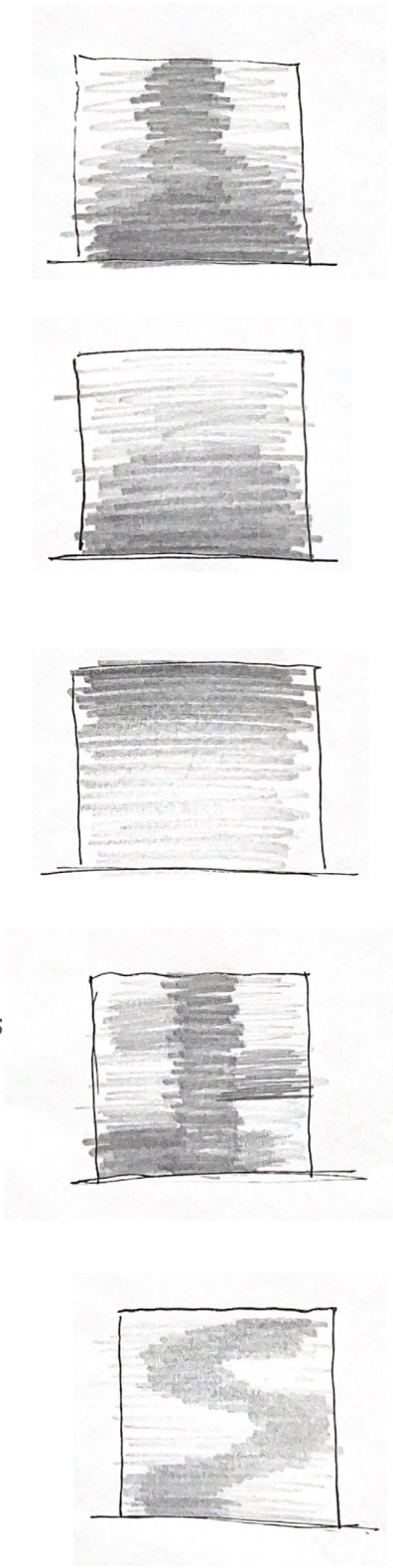
The given building is on 79-83b Charterhouse street in Smithfield, London. The neighbouring property houses the nightclub fabric and across the street is Smithfield market. This and the closeness to St Bart’s hospital and the many offices gives the area **high simulations** all hours of the day. The sensory experience of the high stimulated area was analysed and influenced the filtration and sensory zones of the design.



Scale, sequence and sensory experience became key from the start of the project and lead the work through concept models - exploring scale, sequence of space and sensory zoning.

The insertion in the building creates **layers of sensory zones** through the building. Each layer holds different levels of filtered **stimulations of the community** in the building and **stimulations from the city** outside. Different options of layering the density of the stimulations was explored through sketch diagrams.

The entire interior becomes a space of transition, with the route controlled by the raising and lowering of curtains. The zones follow the transition space in a **spacial sequence**, with the transition space leading from one activity to the next, following a **sequence of stimulations**. Each space holds one activity, supporting the users to **compartmentalize**. To help the users comprehend with the changing levels of stimulations the transition space holds space to decompose within, **a space of escape**.



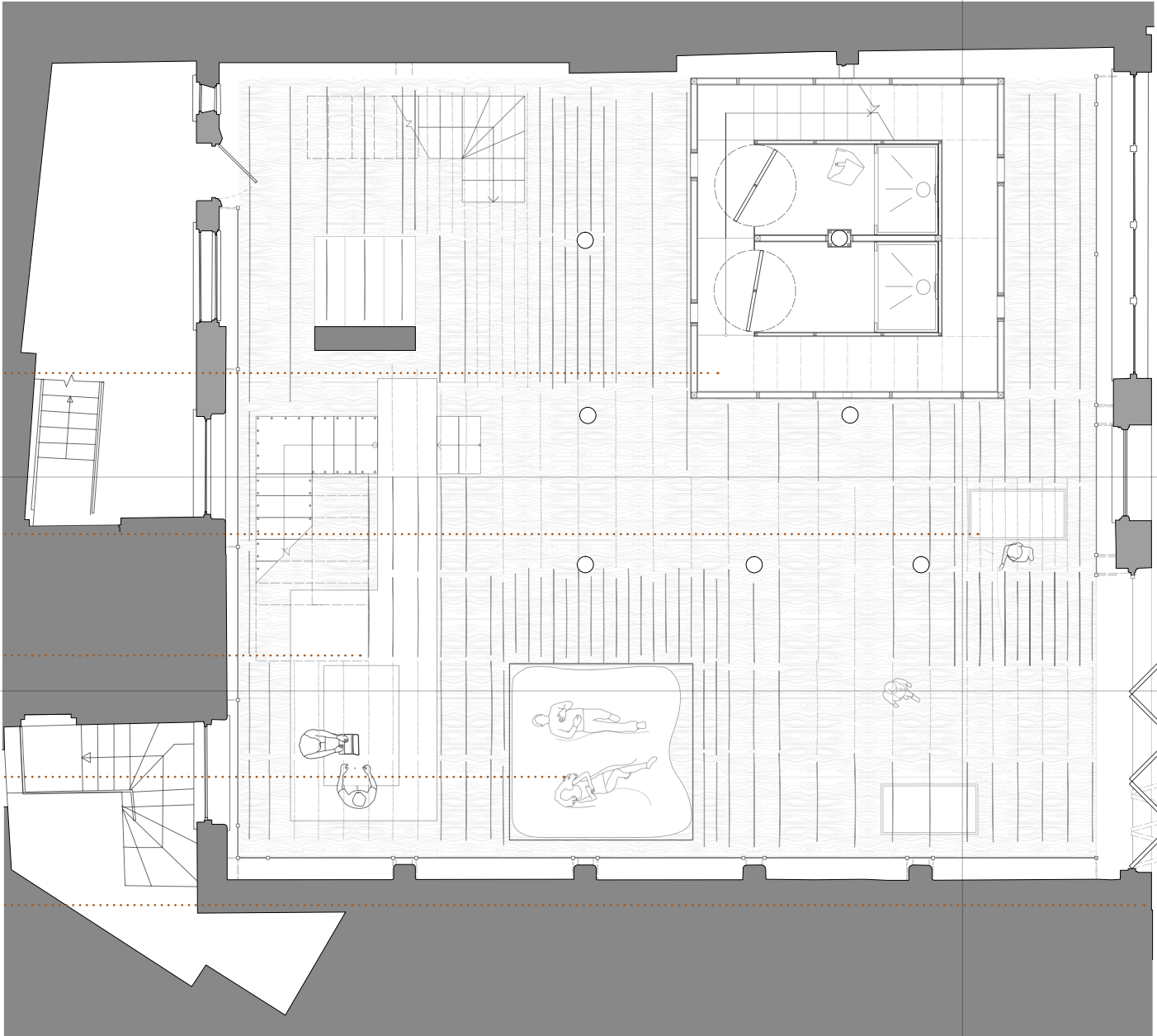
The living space have its own transition space. It is reached from the top and the bottom holds the showers to give the residents privacy and a sense of security.

The threshold sequence holds spaces to step back inside the curtains and gives the residents change to adjust to the stimulations of the street before entering it.

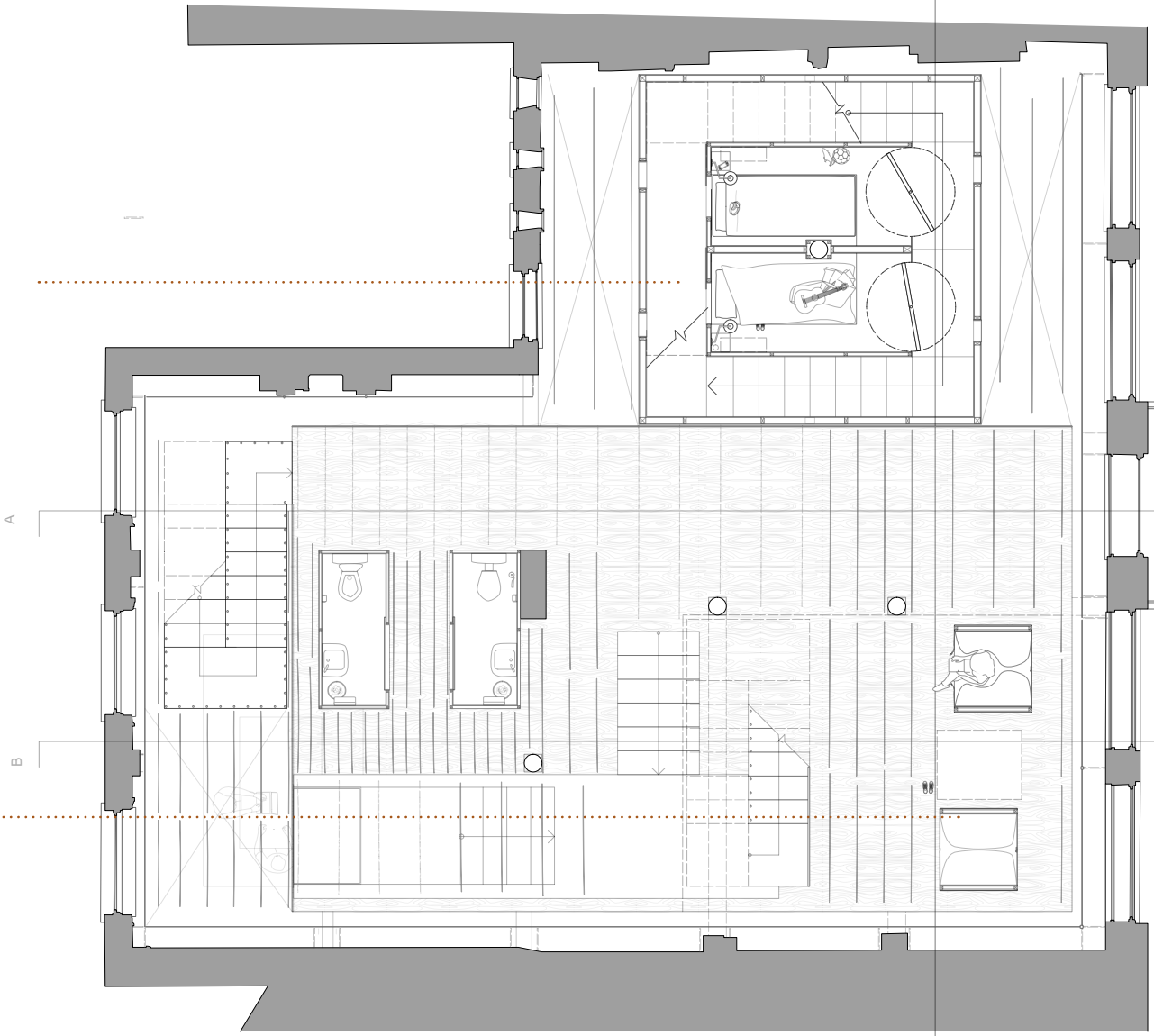
Spaces to meet and work with the mentors are hidden away in the layer of curtains. The users control the level of enclosure by raising and lowering the curtains.

A cinema space is lowered down around the users to create a space for visual work with the mentors during the day and watching movies in the evenings.

The entrance folds back and opens the building to the street making the curtains the disruptions of the threshold.

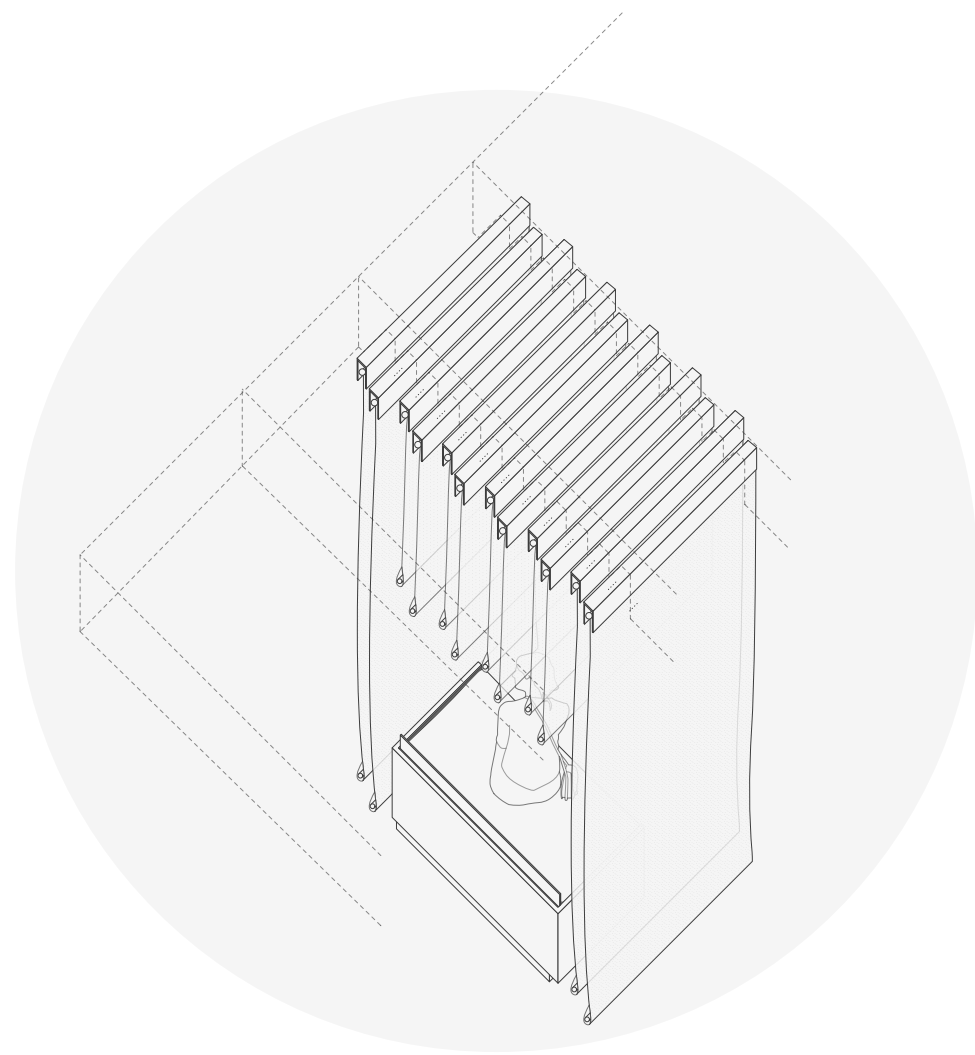


GROUND FLOOR  
1:100

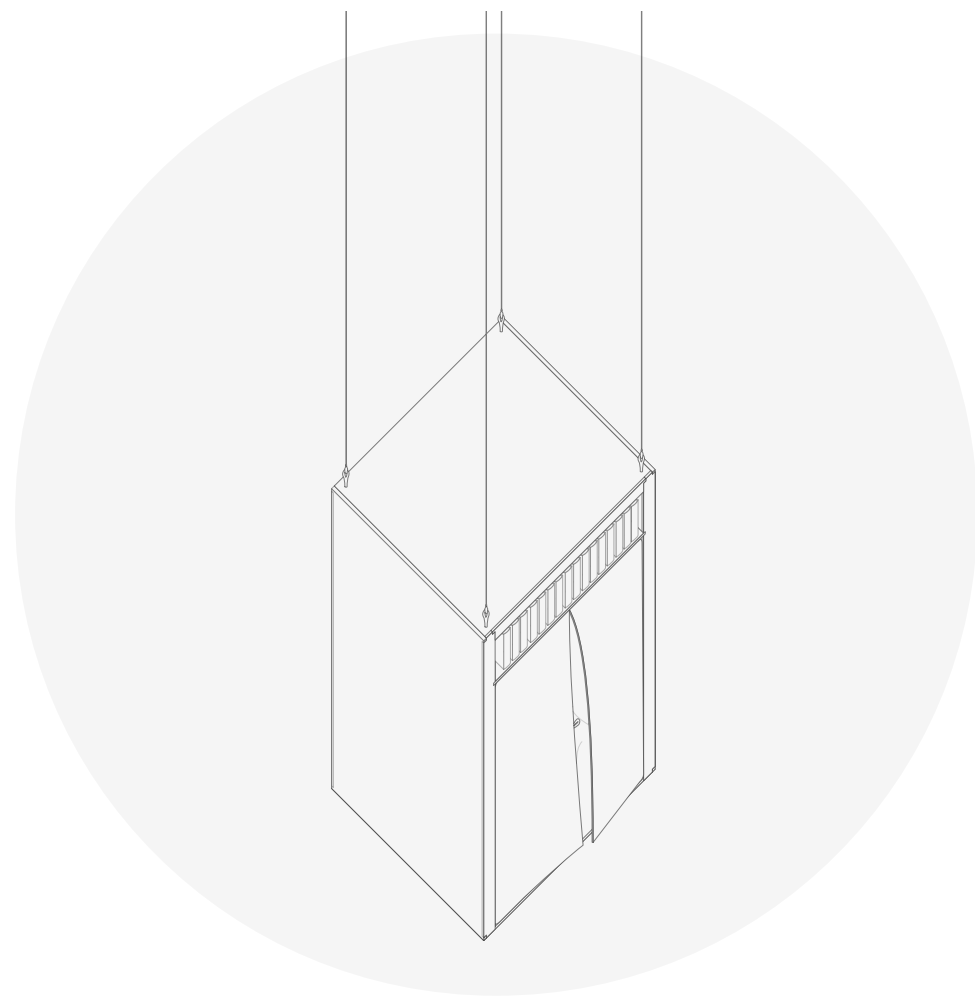


FIRST FLOOR  
1:100

The nooks from the first floor can be raised up from the first floor in the void behind the staircase, immersing the inhabitants in the layer of curtains.



The curtains are rolled up like blinds towards the hidden fixtures in the ceiling to create spaces to inhabit.

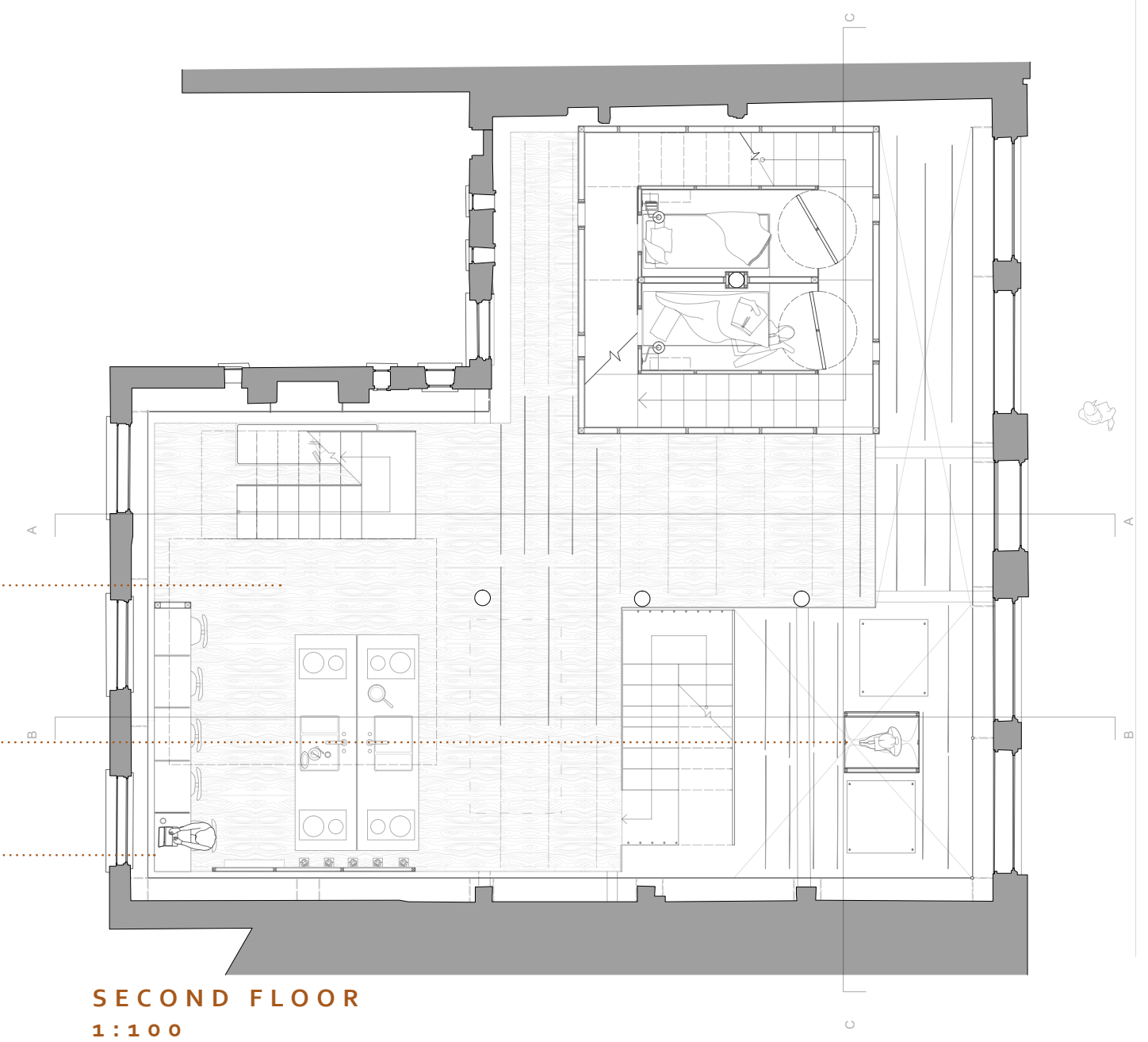


The reading nooks. Openings on both sides can be opened up towards the inside or the windows towards Charterhouse street. The nooks are raised up in the curtains and can be closed on both sides to enclose the users as in a cocoon.

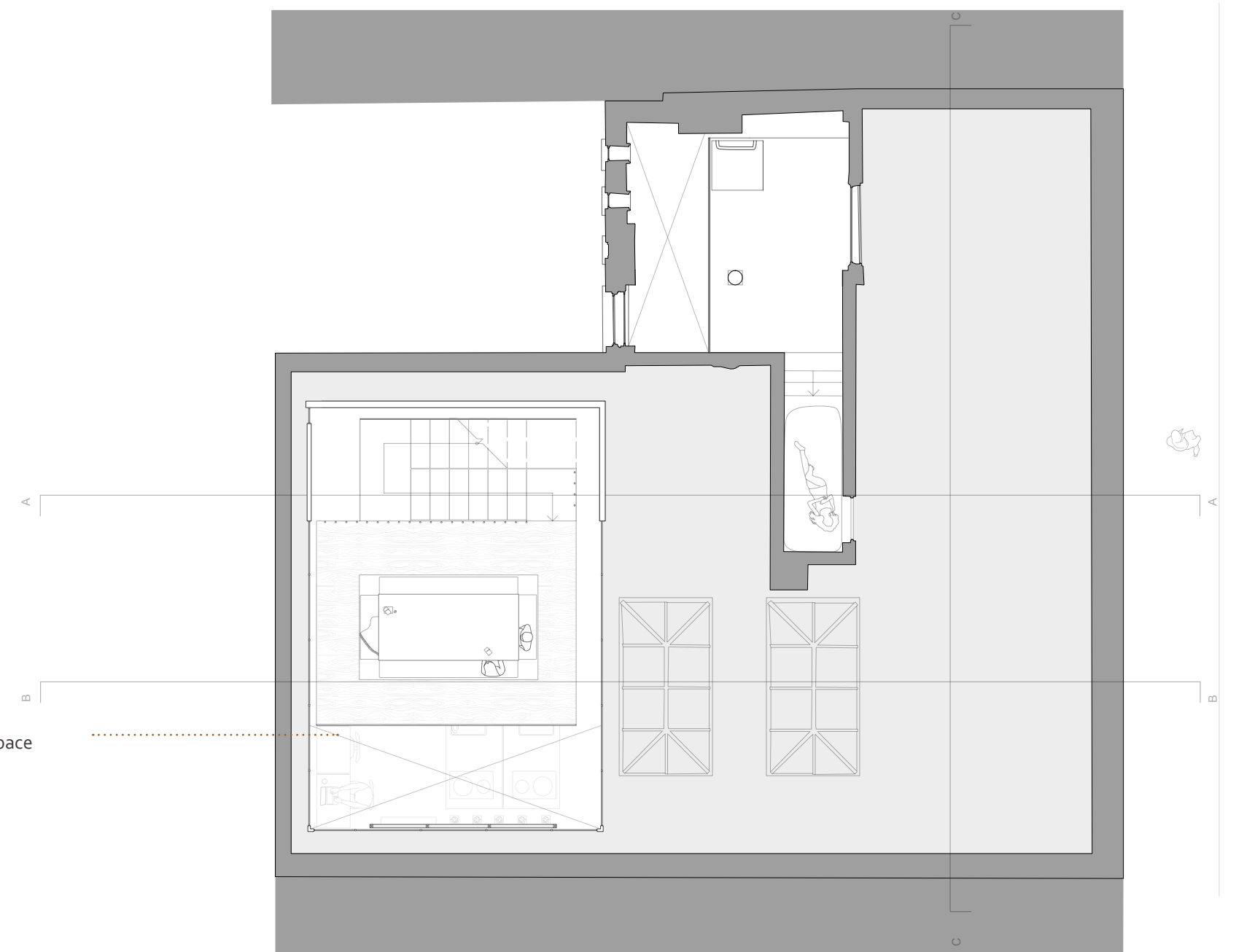
The kitchen becomes the community space in the building. It gives space for the users to cook with the staff the users can also control the surrounding curtains to enclose themselves from the rest of the building.

When the kitchen is not in use it becomes a work space. It also holds a space for the users to eat alone without facing someone. The spaces can be divided by a panel raising up between the seats.

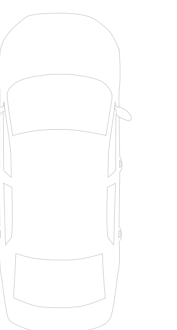
A new insertion penetrates the roof and becomes a space of high stimulation. Here the inhabitants have a close connection to the city



**SECOND FLOOR**  
1 : 1 0 0

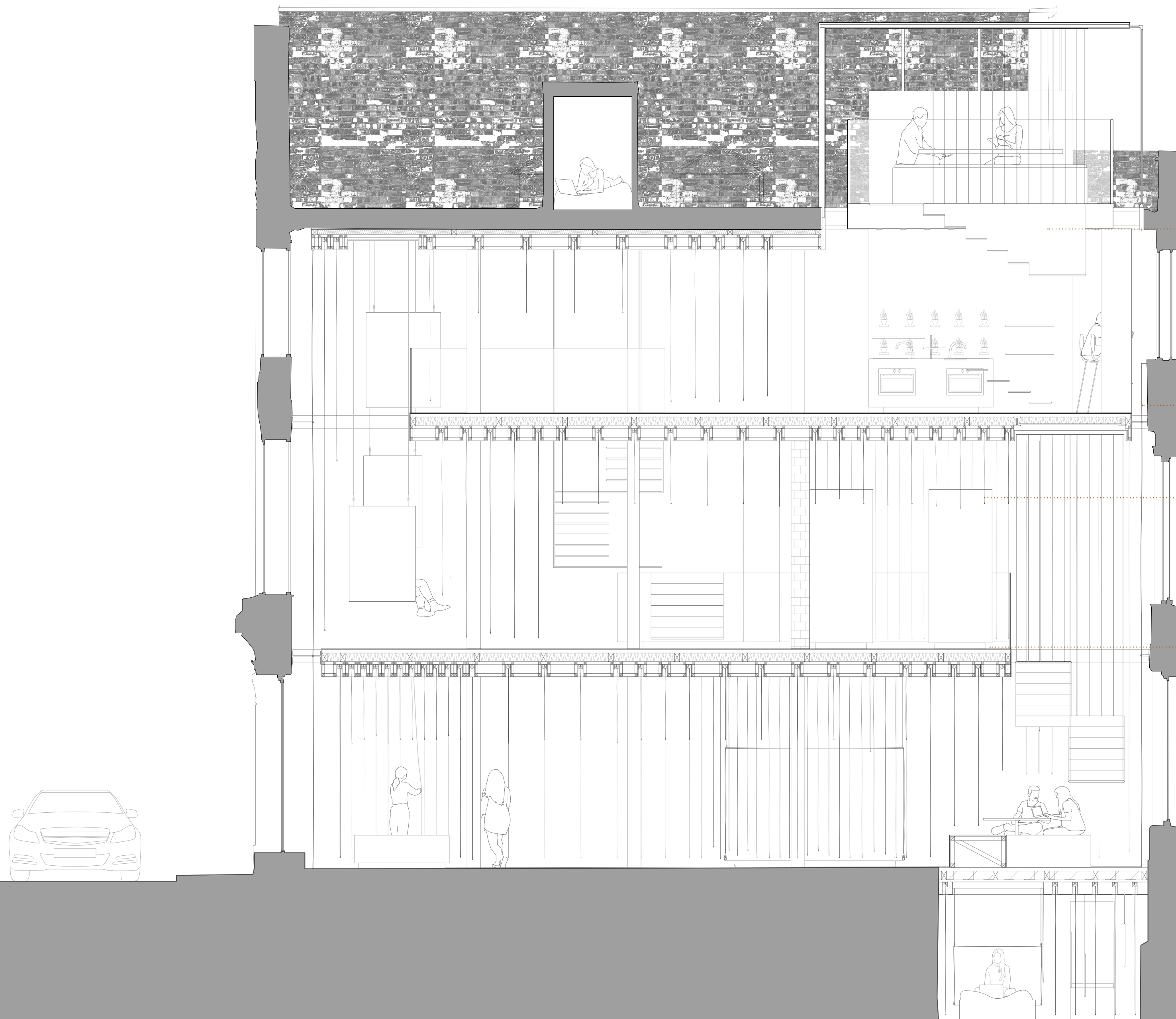


**THIRD FLOOR**  
1 : 1 0 0





SECTION AA  
1:50



The floating stairs hang from the structure of the building

The interior is enclosed in a membrane. Creating skin between the inside and the existing building. The membrane is illuminated from behind to highlight the connection between the existing building and the new insertion.

Each activity is enclosed in the layer of curtains. The moments that need more privacy, here the toilets, have solid walls of birch plywood sheets over a timber structure.

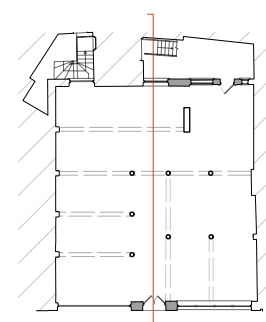
The solid elements are given a sense of floating by being slightly lifted from the floor and illuminated from below.

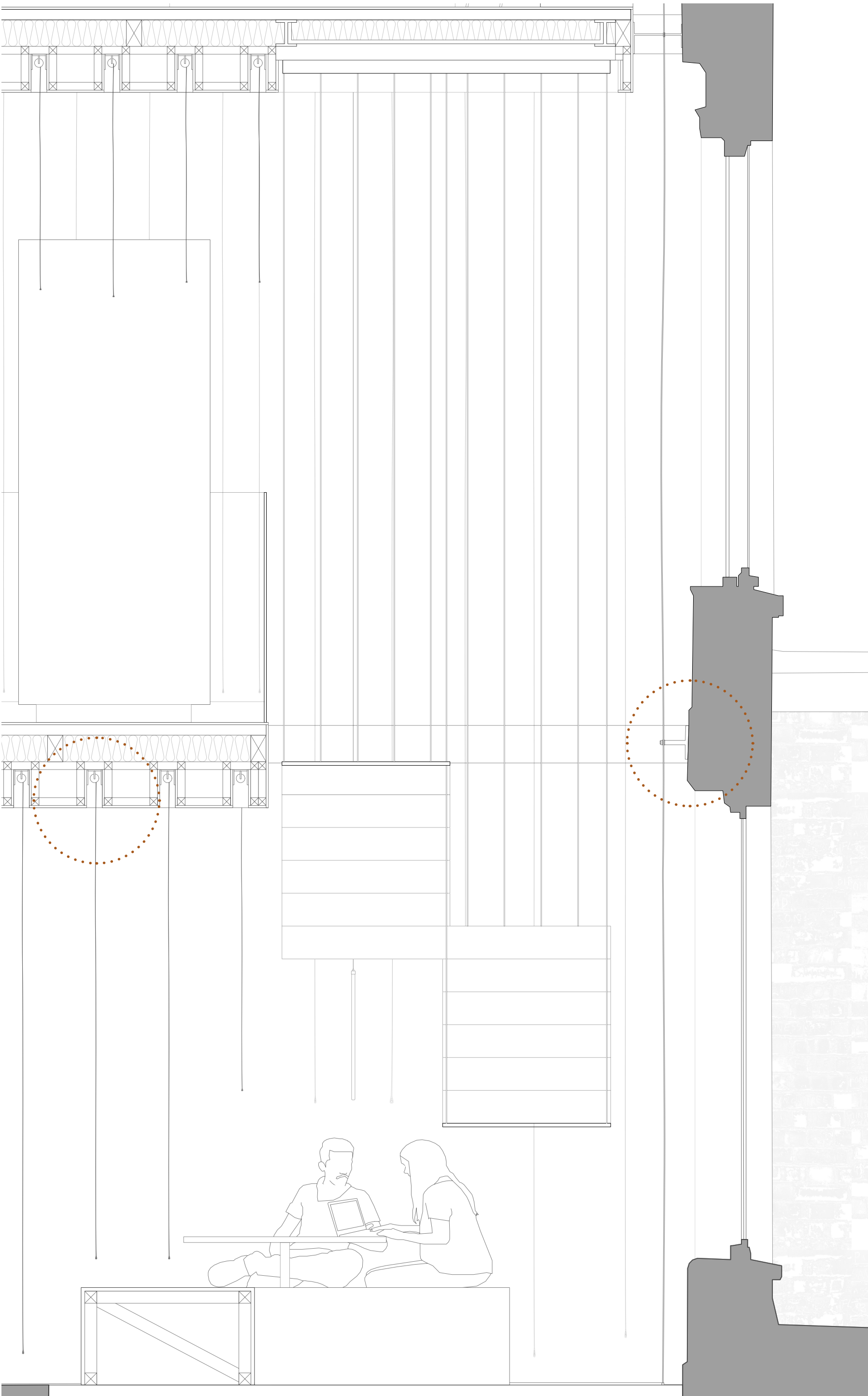
R

A

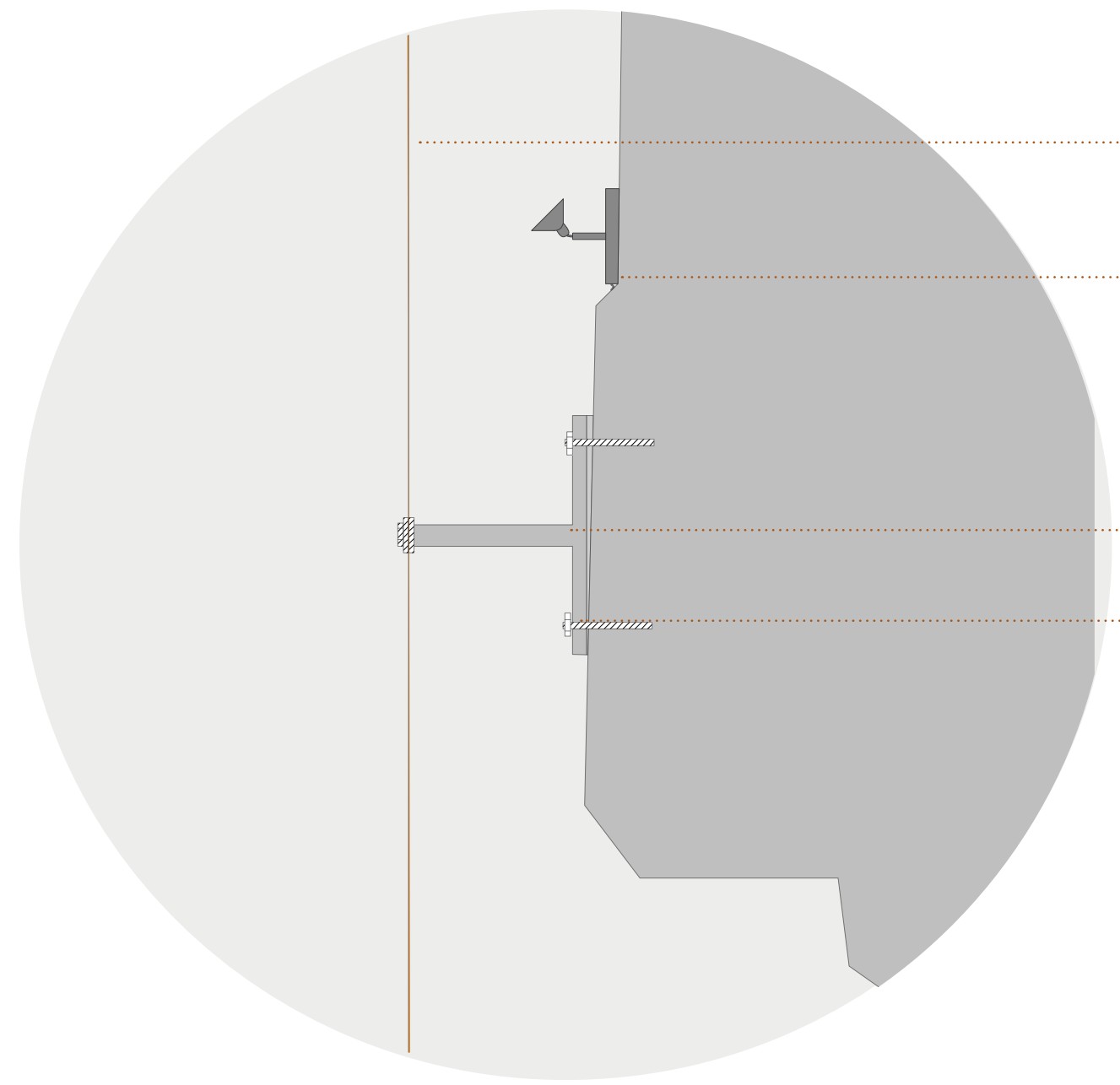
0 1 2 3 4 5 M

Section AA  
1:50  
79-83 Charterhouse street

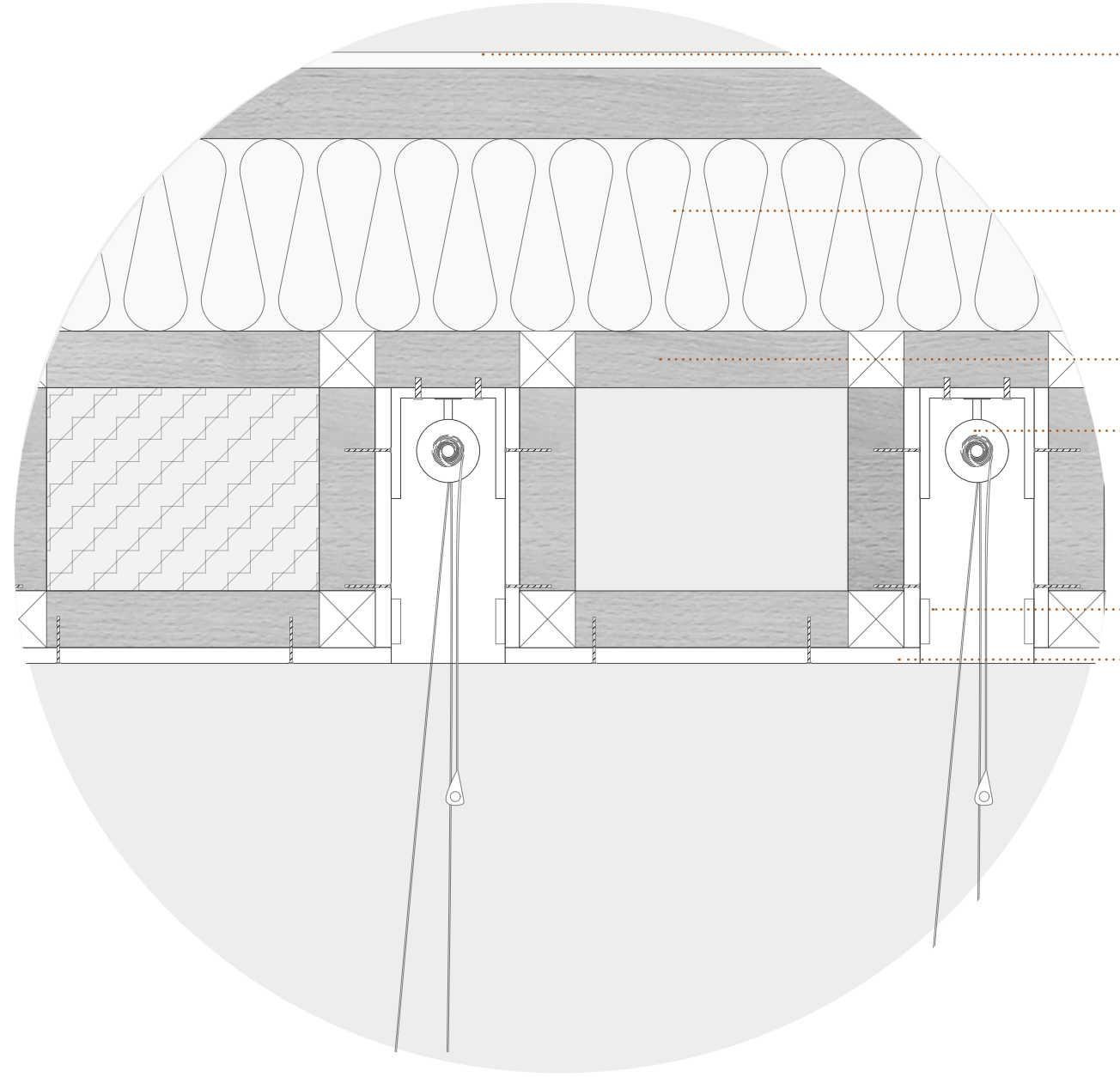




0 300 800 1300 mm



- DETAILS**  
**1:5**
- MESH MEMBRANE
  - SPOT LIGHTING
  - FIXTURE TO THE EXISTING BUILDING
  - SCREW



- BIRCH PLY FLOOR
- INSULATION
- PINE TIMBER FRAME
- BLINDS
- SPOTLIGHTS
- PLASTERBOARD

