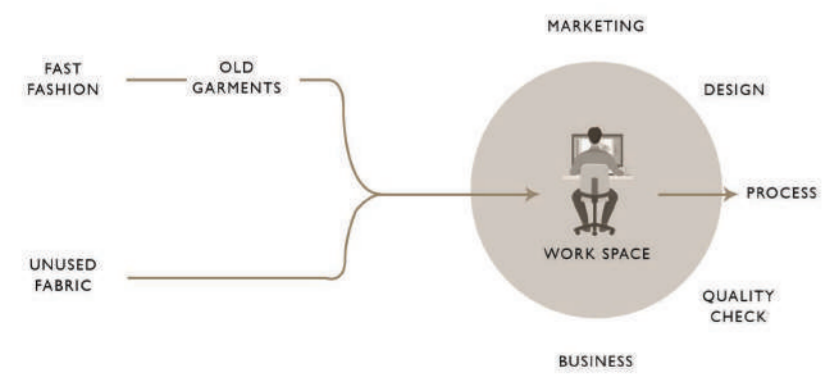
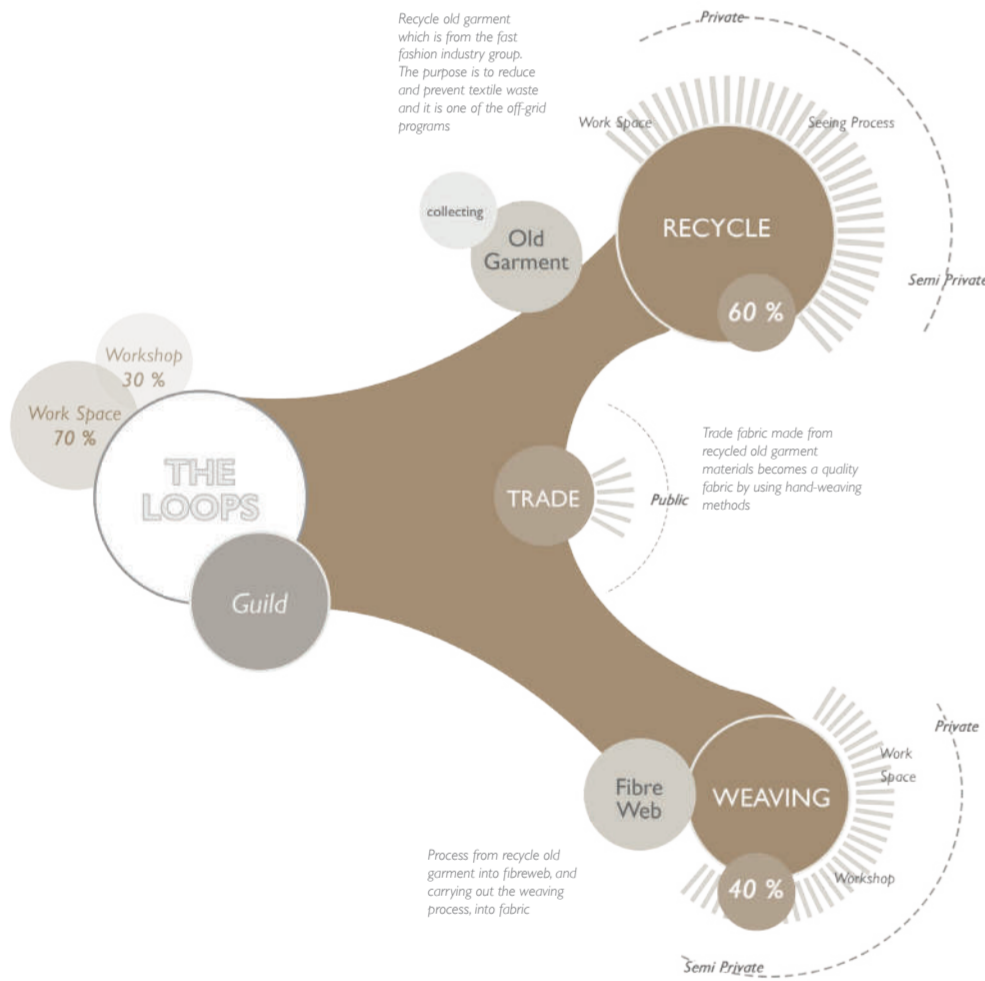


THE 'LOOPS'

The Guild of Recycling & Weaving
Nurul Aliya Afiqah Binti Shahidan

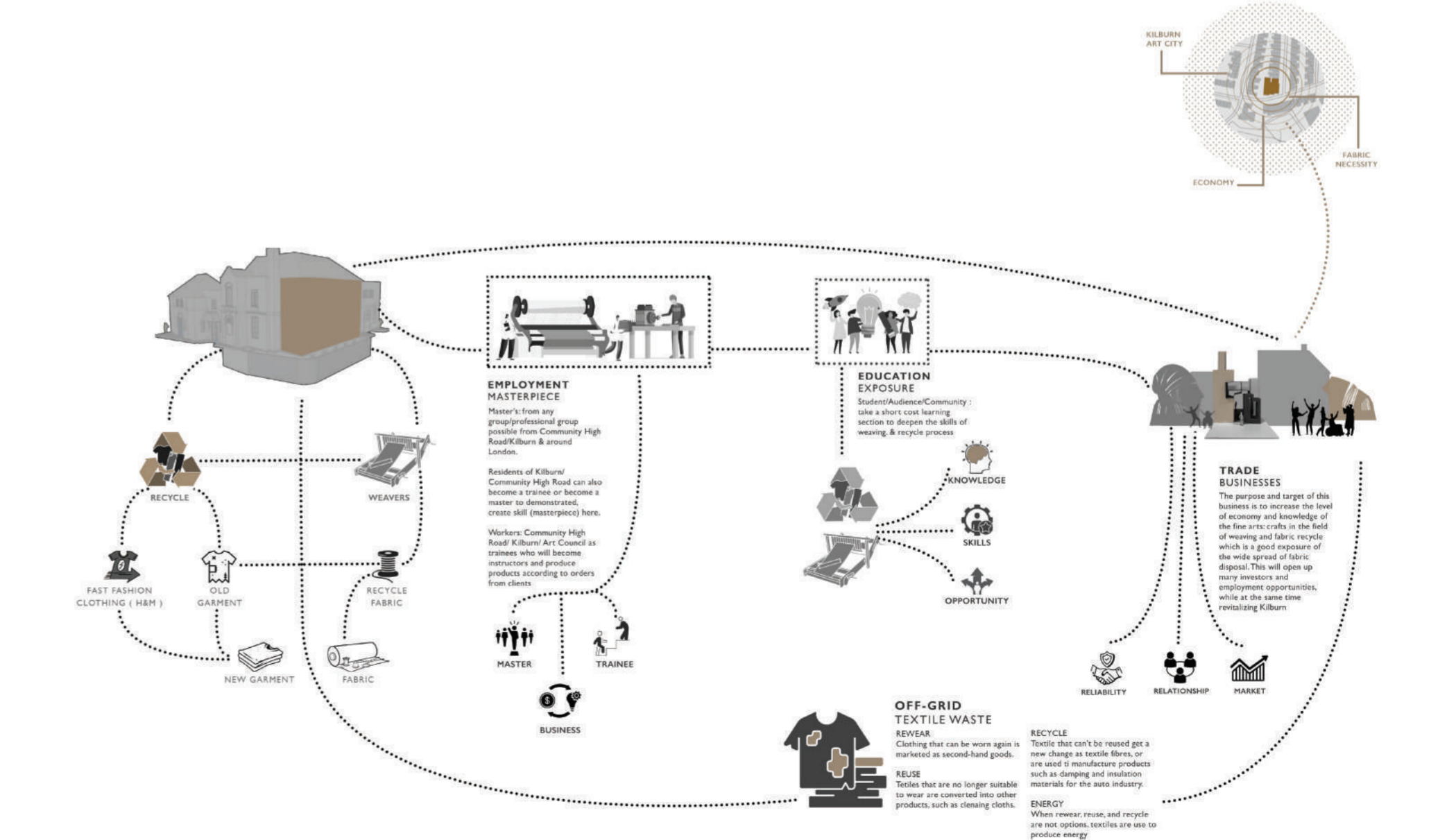
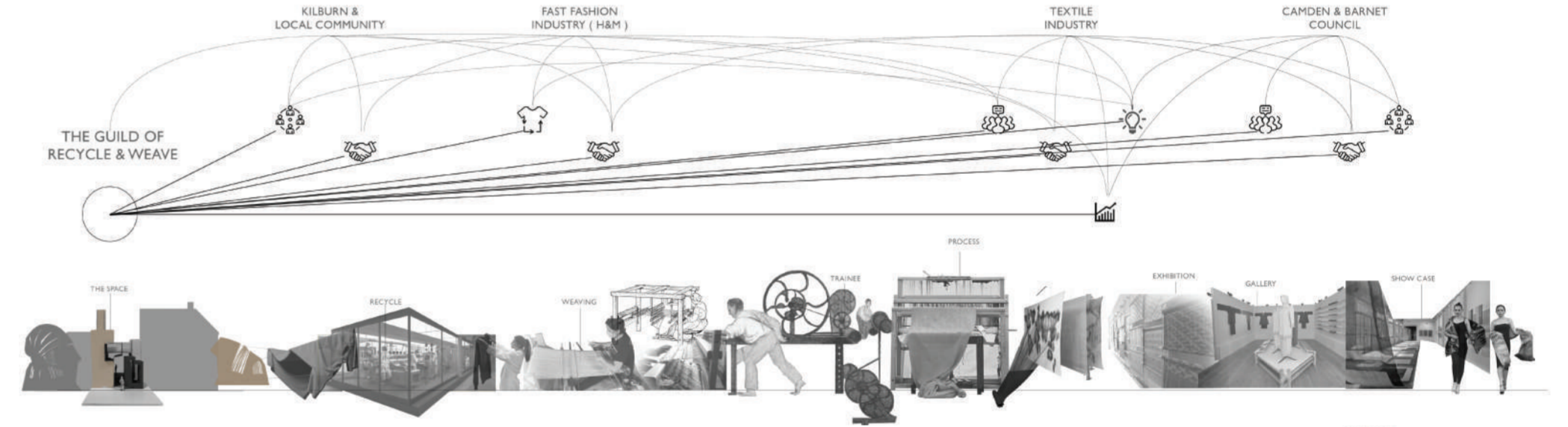
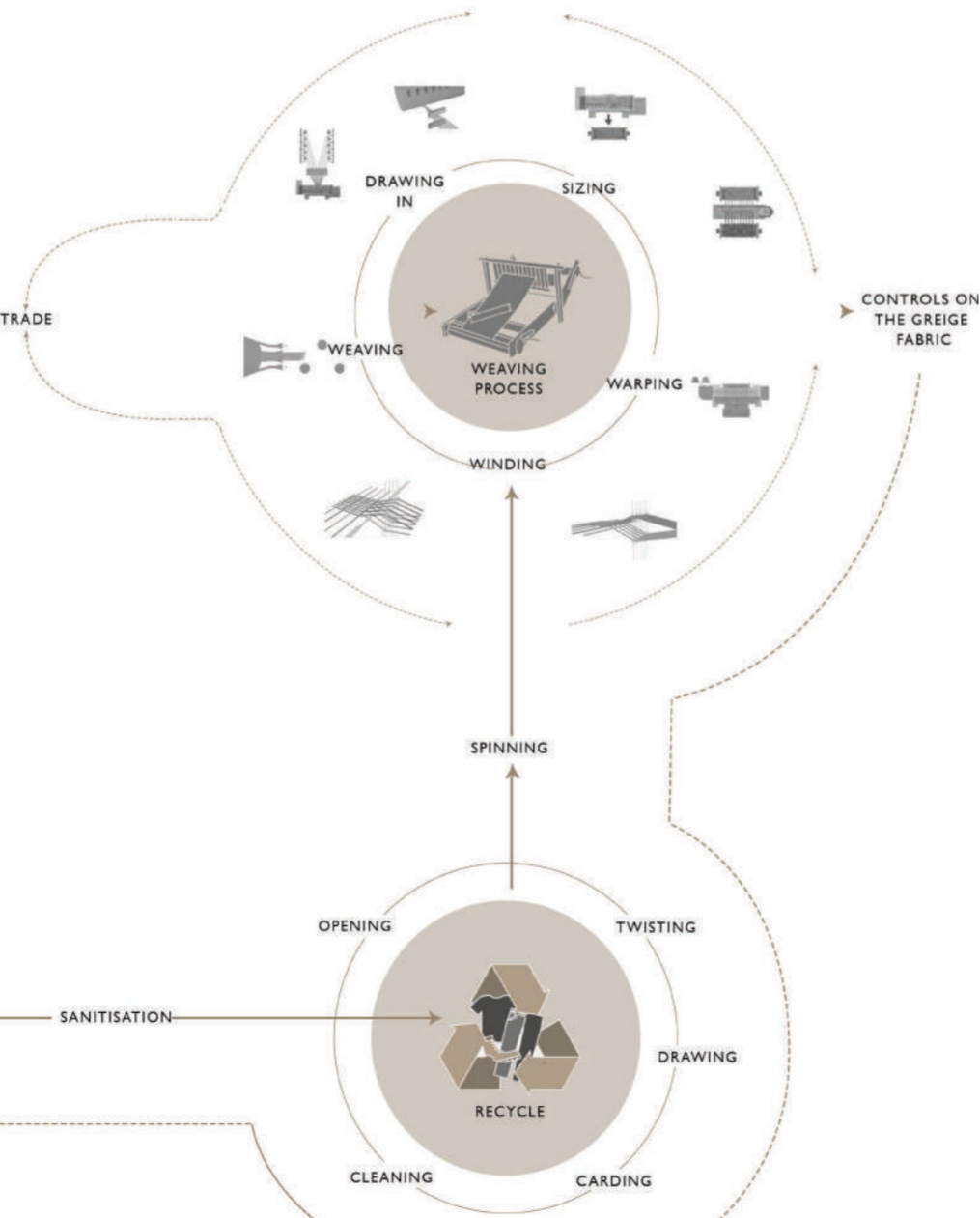
The 'Loops' is a guild of recycling and weaving. The combination of these two programmes creates a cycle of remaking and reusing. The primary purpose is to introduce skills & craft into the Kilburn area in collaboration with the local community. The Guild of Recycling and Weaving brings a range of new skills and knowledge to the area. With this expertise, Kilburn can benefit from the increase in knowledge value, which in turn improves the cultural capital of the locality. The scheme makes use of the building's vernacular to respond to the demands of this new set of functions that enable and celebrate Kilburn as an 'art city', increasing visitor numbers, reinvigorating the area to reduce crime rates and improve the local economy.



SOURCES

MANAGEMENT

OPERATION





THE LOOPS THE GUILD OF RECYCLE & WEAVING

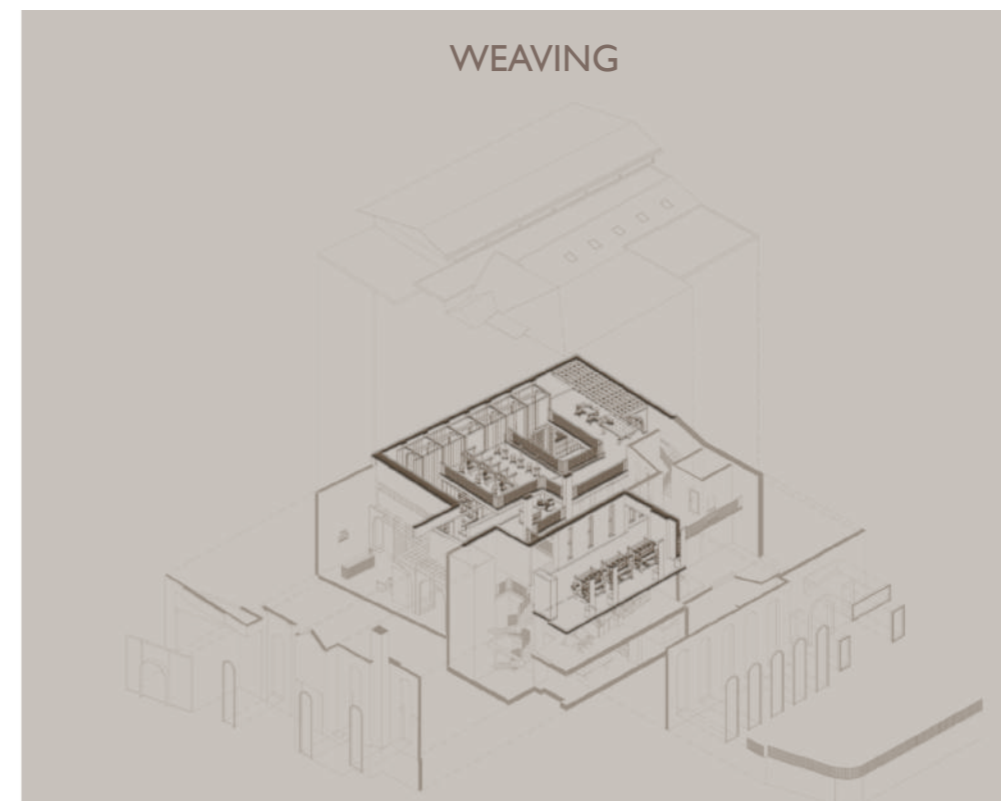
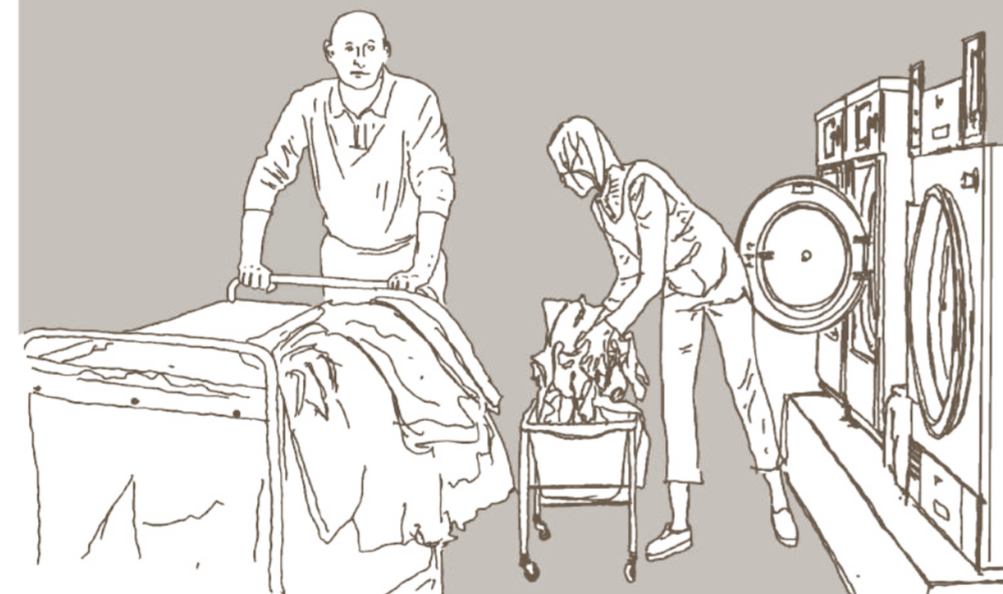
THE LOOPS, given because the process in this guild is like a cycle and also it is the same as the typologies of weaving ie looms.

The three cores in this guild are to make Kilburn Art City such as the exposure of knowledge, skills and opportunity. Next, upgrade the **economy** level in the Kilburn area with employment and production opportunities, and **Fabric necessity**, which is to return to *Off-Grid (Rewear, Reuse, Recycle, Energy)*



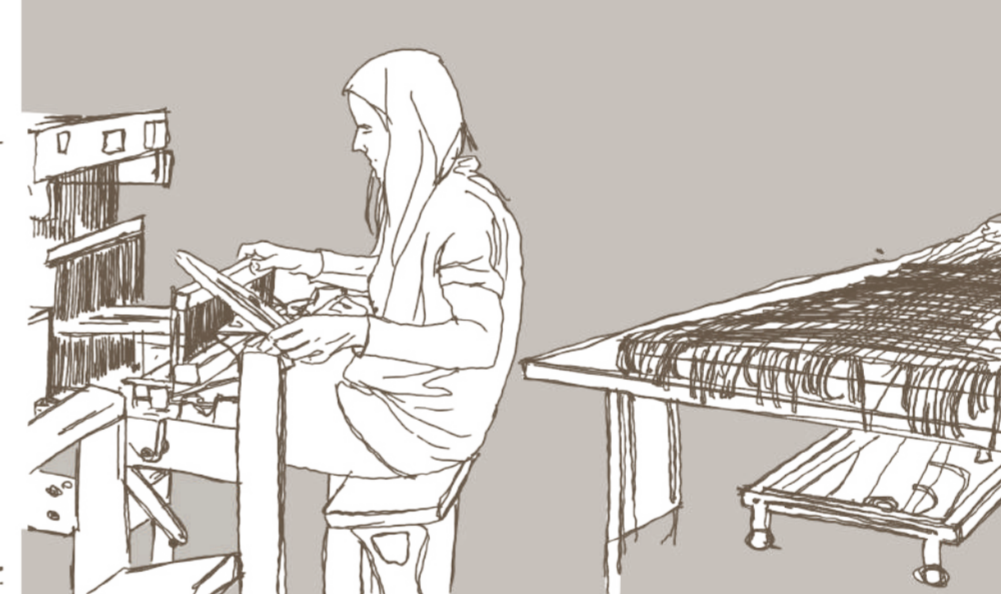
RECYCLE

The Fast Fashion Industry (H&M) and Public send used clothes or old fabric to the drop point provided through the laundry chute and directly to the old garment collection room for the sanitation and saperate process and directly to the recycle area on the ground level.



WEAVING

From the sanitation process, recycle directly to the spinning & winding operation to separate the yarn and process it again into a weaving fabric. There are two sections of weaving, namely commercial/trade weaving and weaving workshop & design for students and the public who want to deepen their weaving skills.



TRADE

Trade the results of weaving which is from commercial weaving and also from students on a small scale while commercial weaving is sold on a large scale. It can indirectly support those involved (students/locals) in terms of interests, finances and skills.



A DAY IN THE LOOPS



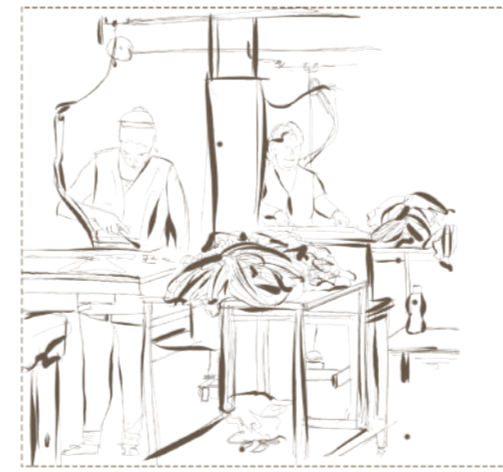
GARMENT DROP POINT



COLLECTION FROM THE LAUNDRY CHUTE



SAPERATE THE BUTTON & ZIP



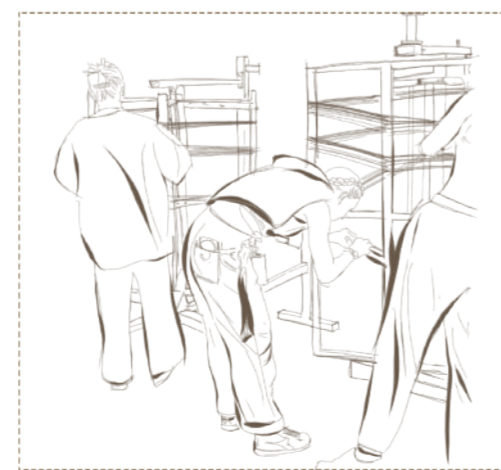
PROCESS FOR SANITATION & LAUNDRY



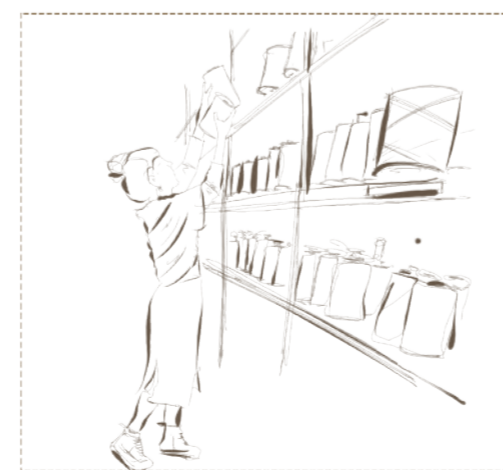
DESIGNING TEAMS & QUALITY CHECK



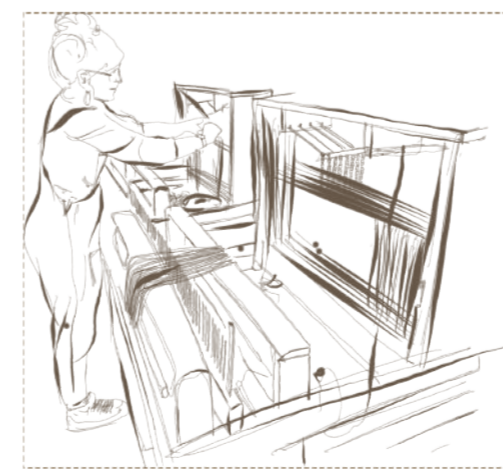
WEAVING WORKSHOP



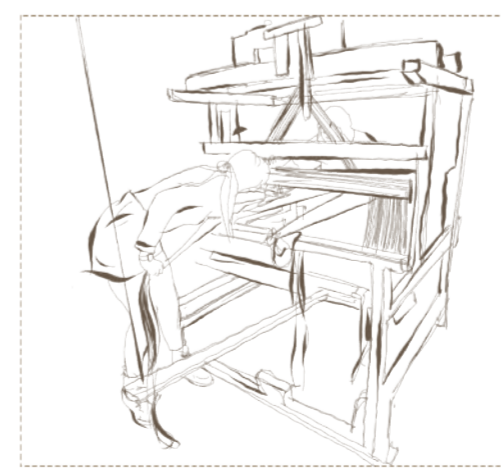
SPINNING PROCESS



SAPERATE THE COLOR IN BOBBIN SHELF



ARRANGING THE YARN



WEAVING PROCESS

PROPOSED

STRUCTURAL CONFIGURATION

This building is interpreted as (a box within a box), the main pillar in this building is a box structure which is located in the building where it rides on the original structure and becomes a space that is used as an office, workshop, and staircase with storage where it can also be connecting the two sides of the building and there is a mezzanine space. The intention is to design a space where clients, users, and others can see and get something educational.

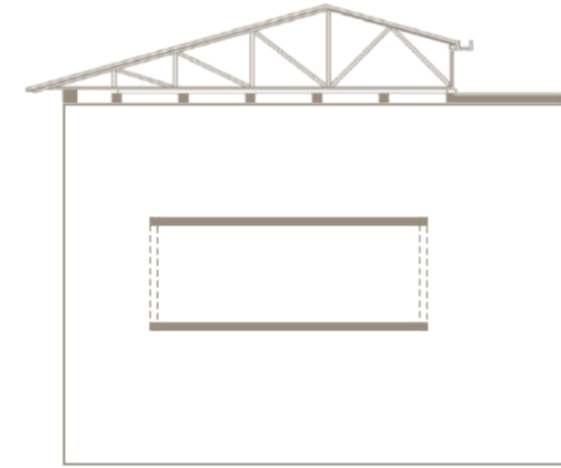
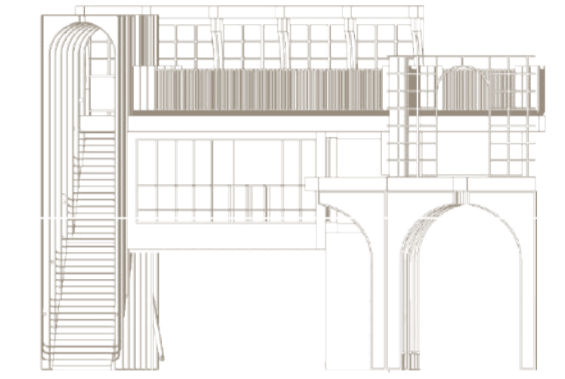
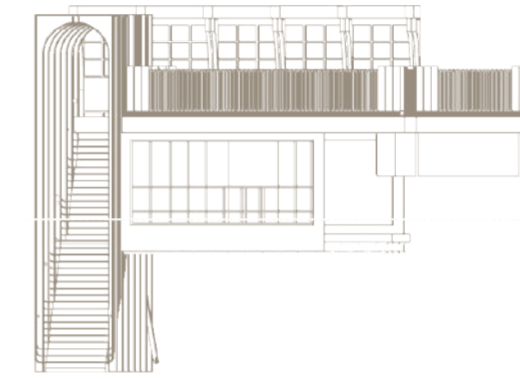
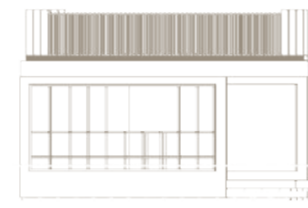
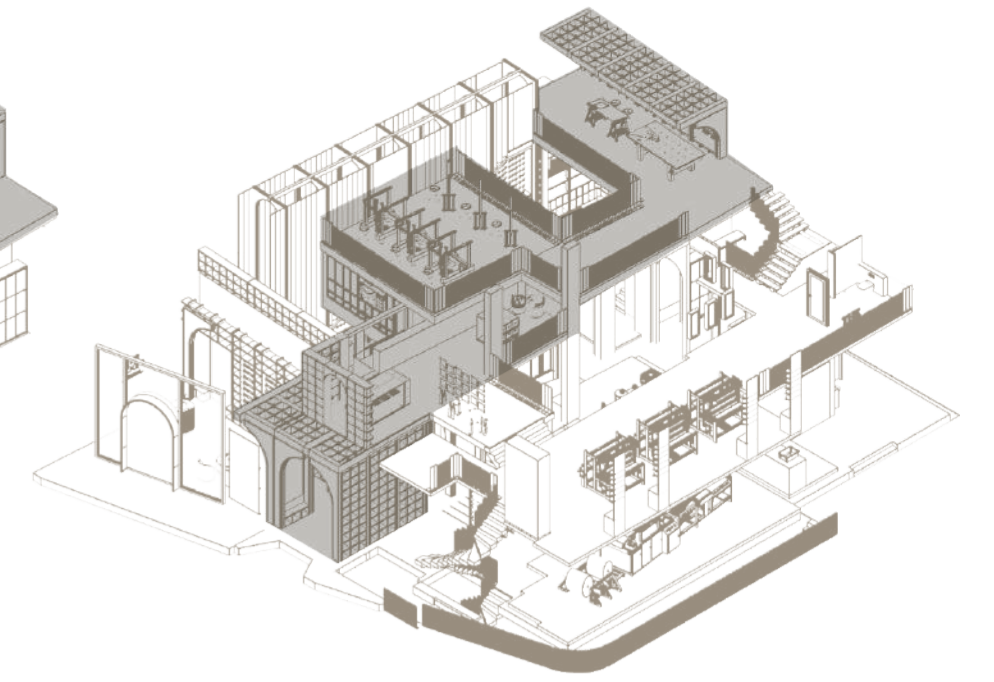
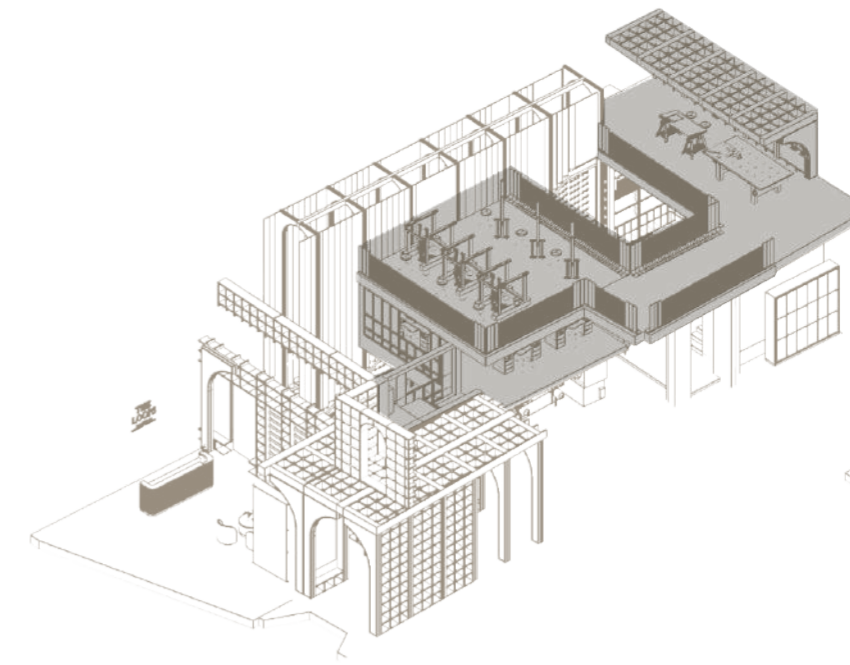
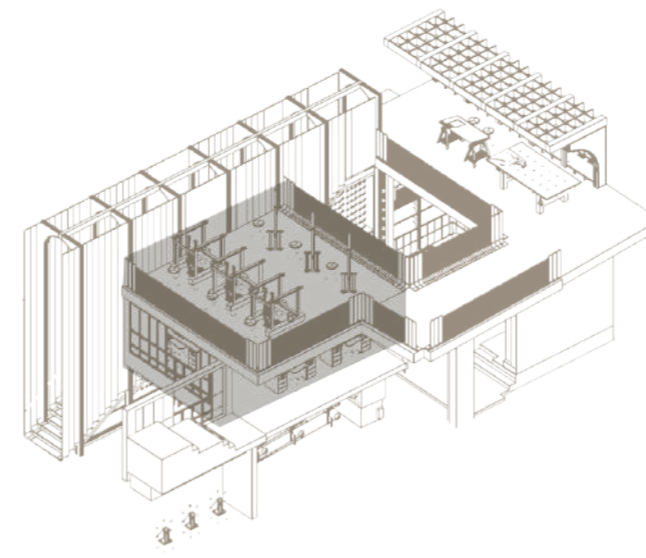
The original idea to create a new structure in this space like a box within a box is to create a new volume in the middle of the building without affecting much of the structure of the original building. Make it a mezzanine space in the middle of the building which connects the position between two different buildings and floors.

The selection of the arch form here is based on a long research whose character is as a support structure without a beam, but it originally came from the rusted sledge model produced in Term I.

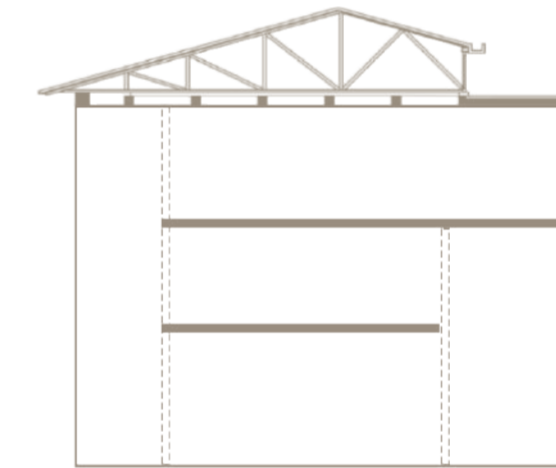
Facade of this building is modified with an arch mirror window which connects the ground floor & first floor. Just like in the interior, maintaining the arch form as an identity design which is used on all windows as well as stairs & balustrade



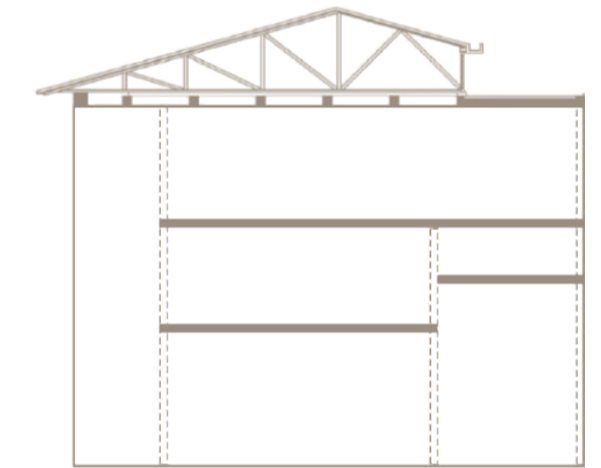
Rusted Sledge model



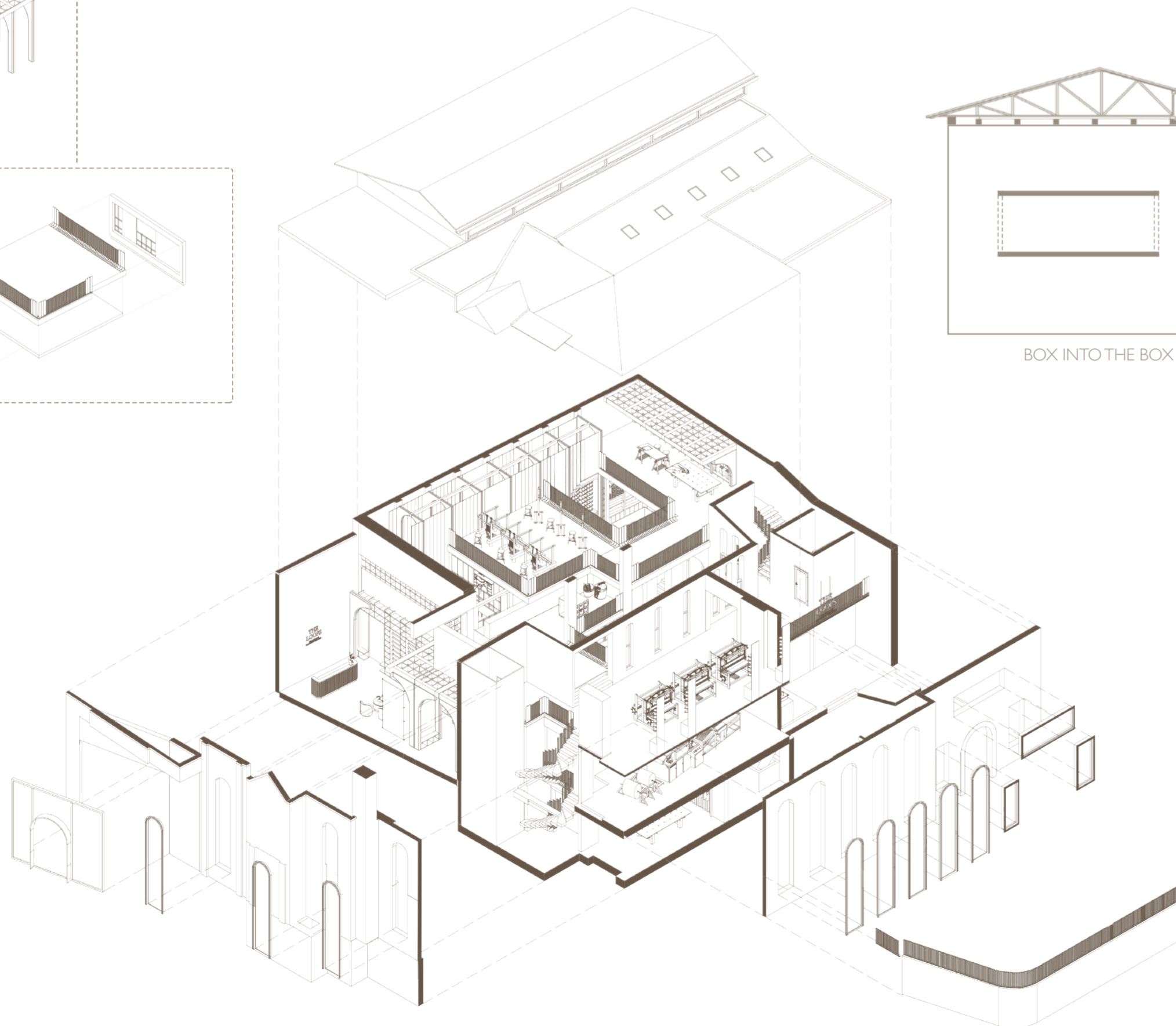
BOX INTO THE BOX



CREATING MIX-USED BUILDING



FLEXIBLE MICRO SPACES

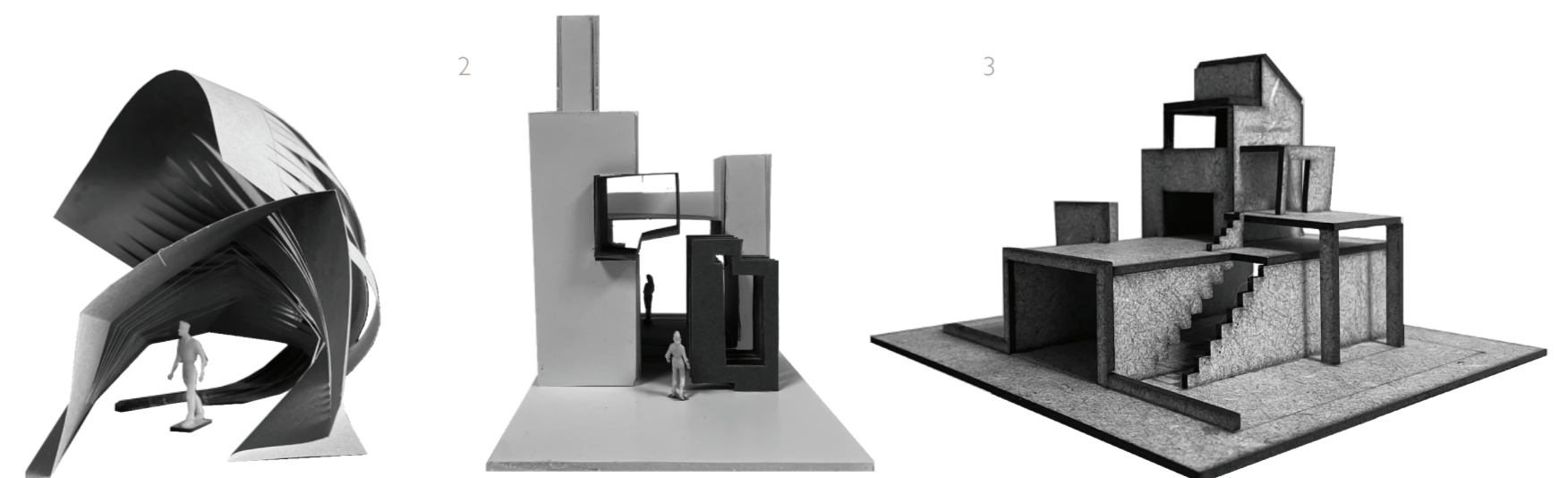


MAQUETTE MODEL // MAKE_RETHINK_REMODEL

1. This model making abstract describes the rhythm which is quoted from the keywords of model making in Community High Road which are **layers, linear, cramp**. combined the three keywords to become a sculpture model which can be developed and make identify a form for the next model.

2. Rethink model where I still use the same keywords but more focus on the space, try to make it like a pavilion and play with the human model

3. Remodel maquette model is where i try to explore and develop the shape and componen from the rethink model



THE LOOPS: OPERATION MOMENTS



THE LOOPS: COMMERCIAL & RECYCLE MOMENTS



THE LOOPS: OPERATION MOMENTS



THE LOOPS: OPERATION, COMMERCIAL & RECYCLE MOMENTS



LOBBY



FABRIC GALLERY/SHOP



LOUNGE



OFFICE



WEAVING WORKSHOP

MATERIAL SPACE

