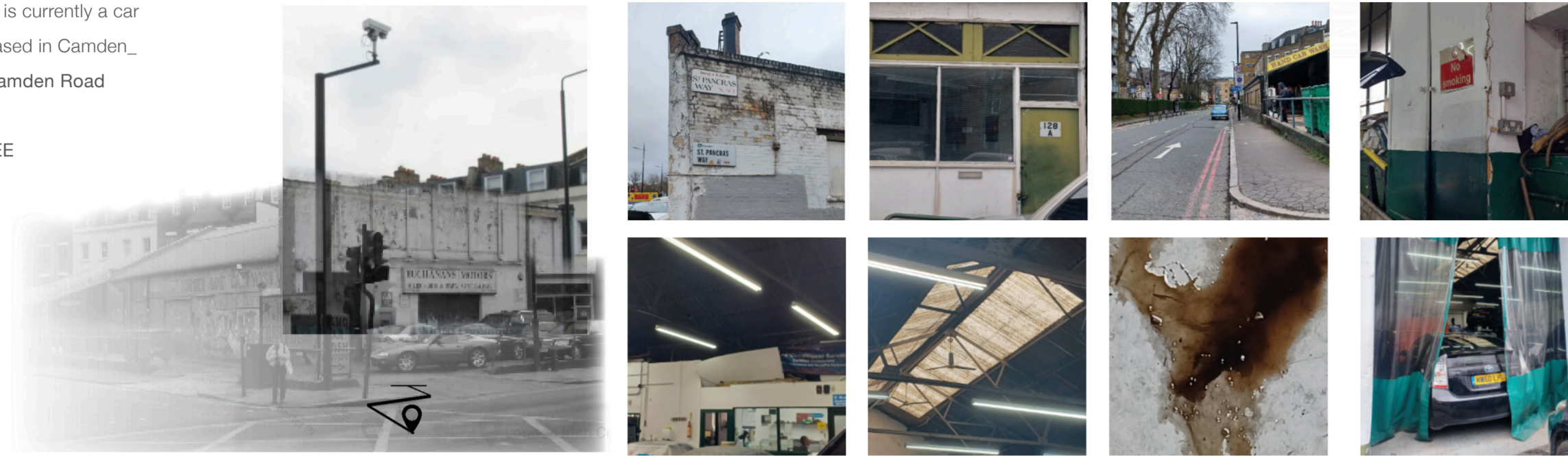


# 'A PLACE FOR IDENTITY'

Design an exhibition space to celebrate the work of two designers who are trying to improve the impact upon the environment whilst raising awareness of some of the issues surrounding their work.

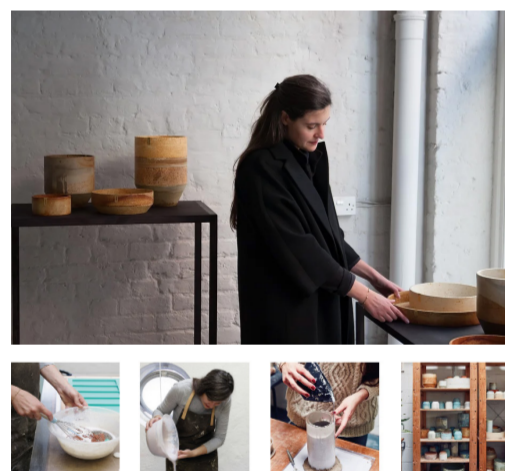
## SITE\_

The site is currently a car wash based in Camden\_ 128A Camden Road London NW1 9EE



Picking up on the natural deterioration of the site, oil spills, industrial, utilitarian language inspired the idea of watching things erode. The spills of oil prompted thoughts of the 'out of our control' the impact of clumsy humans.

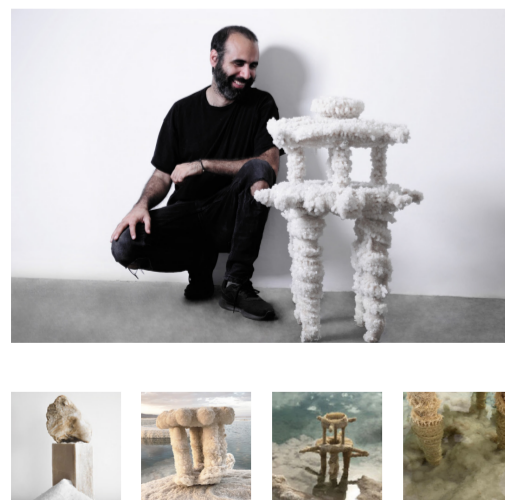
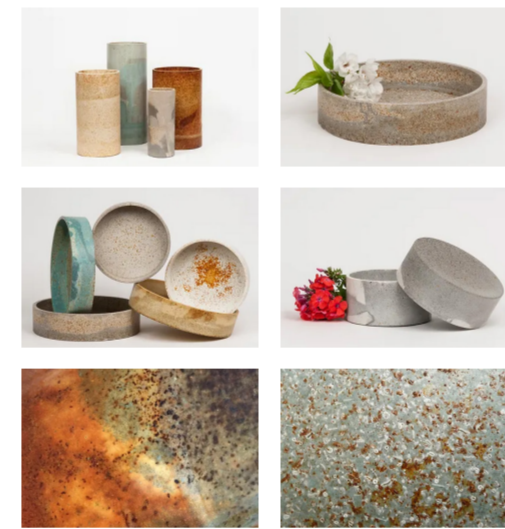
## CLIENT ANALYSIS



### ARIANE PRIN

Combining her passions for sustainability and originality, designer Ariane Prin launched her first home-ware collection, Rust, in 2015. Made entirely by hand using waste metal particles, each piece is unique in colour, texture and shape.

Ariane Prin discusses how it was by chance that she learned about the materials; she says, "I had no intention of starting a company when I first experimented with metal dust. I appreciate how a material that is useless to one person can be the beginning point for a project that is much more valuable to another. I believe we need to establish more of these connections in order to close the loop of the systems in which we are involved."

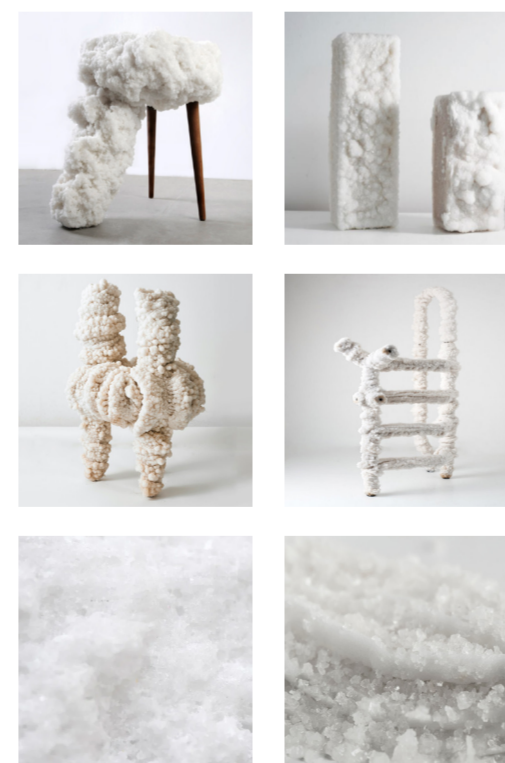


### EREZ NEVI-PANA

Erez Nevi Pana is a student of the earth, traveling far and wide to research how vegan design can alleviate our harmful interactions with nature. One of his most compelling bodies of work, motivated by the devastating consequences of mineral extraction from the Dead Sea, transforms salt into otherworldly crystalline architectural forms with the power to upend our notions of what humble materials can accomplish.

To make the Crystalline collection, Nevi Pana first extracted the raw material from the Dead Sea. He then continued to treat the raw material in various ways to make the final salt shapes. One part was left unfinished, while another was CNC-milled to create steps. He also used a compression-and-heating process.

Pana claims that sunlight is a fantastic technique to form crystals since the heat allows the water in the crystal to evaporate considerably faster, therefore speeding up the process.



## Concept\_

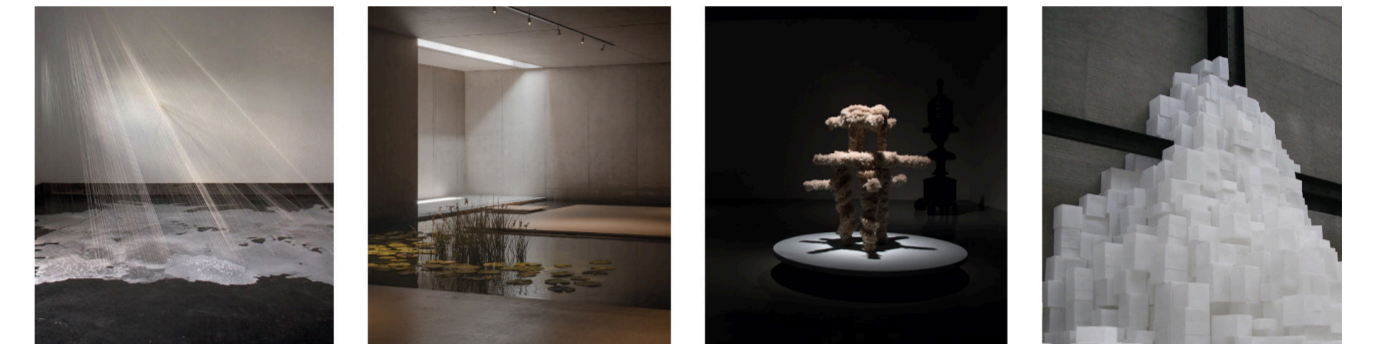


### RUST

Rust is an iron oxide, a usually reddish-brown oxide formed by the reaction of iron and oxygen in the catalytic presence of water or air moisture.

### OXIDATION OF IRON

When iron is in contact with water and oxygen, it rusts. If salt is present, for example in seawater or salt spray, the iron tends to rust more quickly, as a result of chemical reactions.



This exhibition will change over time, growing through the crystallisation of salt wrapping its way around the structures rising out of shallow tanks of salt water below - simultaneously elements of the metal structure are encouraged to corrode and rust showing the natural entropy and oxidation of the 'man-made'. These changing states are a both a conceptual warning of the deteriorating state of our world and an optimistic celebration of the possibilities of natural processes observed and harnessed by the designers.

## MANIFESTO\_



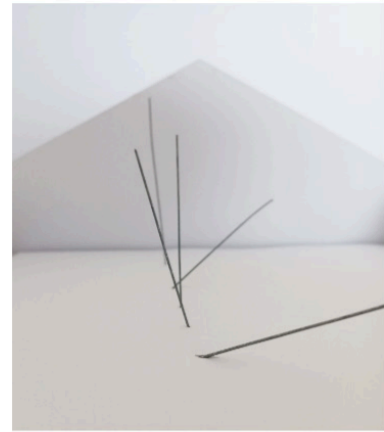
The exhibition aims to shock the public, flooding a space leaving a barren shell of structure & raw elements left to decay and evolve naturally. Visitors are enticed in by intimate glowing pockets of light highlighting the exhibits. Navigating their way through the space using narrow timber walkways floating above the surface of the water.

# 'A PLACE FOR IDENTITY'

The initial explorations looked at structures emerging from the floor and the idea of stepping stones or walkways across the flooded surface, considering how the salt would crystallise around the metal beams and transition between volumes.



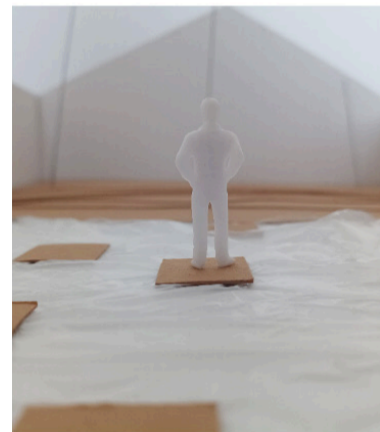
The various levels of flooring with steel beams resulting in various degrees of walking



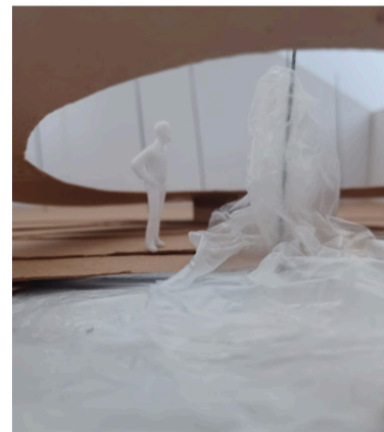
Tension is created by the different levels of steel beams



A rustic feel through soft fabric



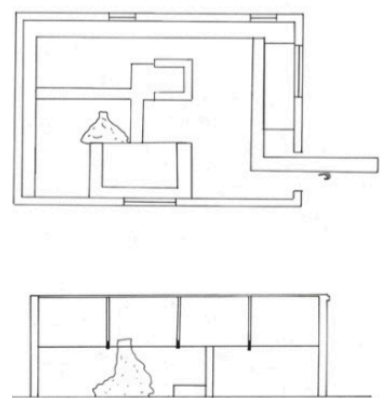
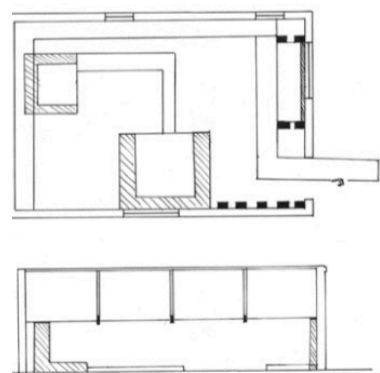
A path that gives a sense of taking time



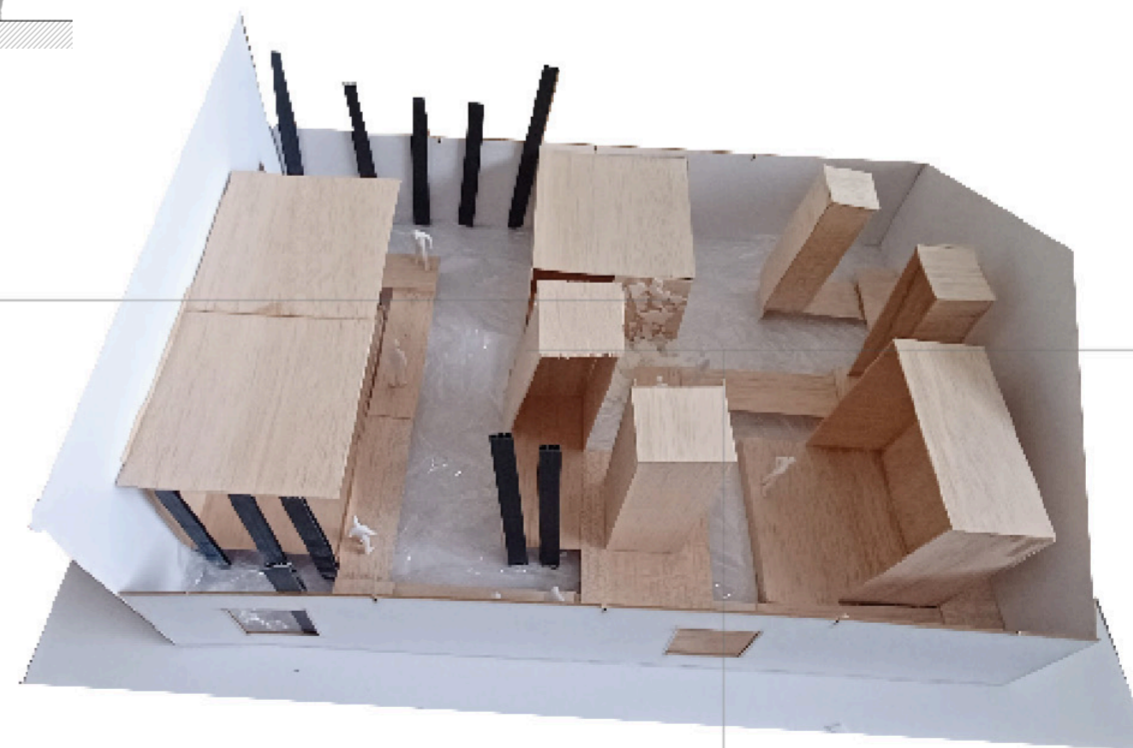
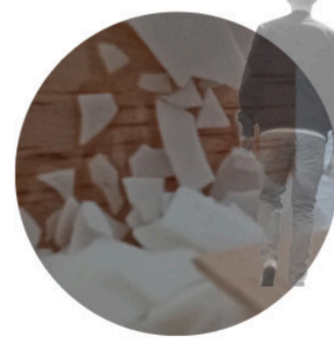
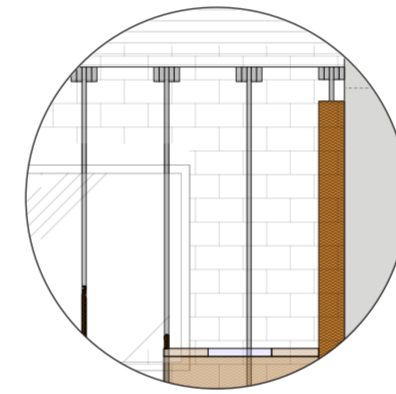
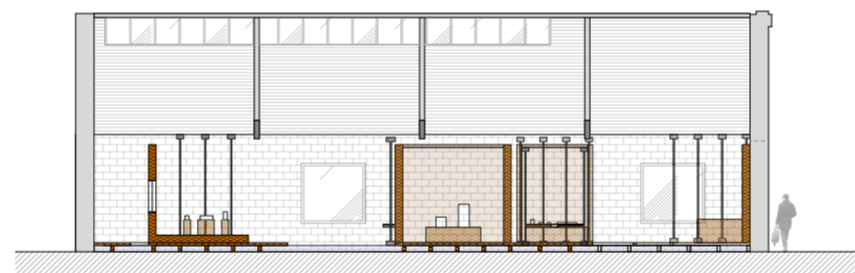
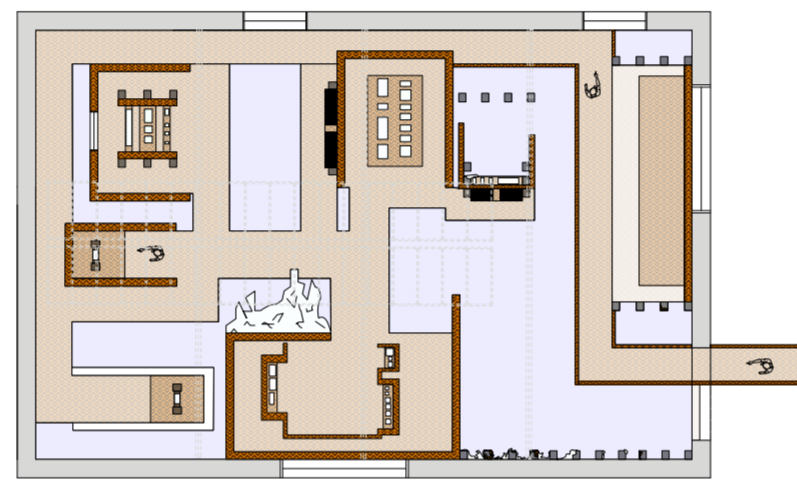
The process of crystal formation through water



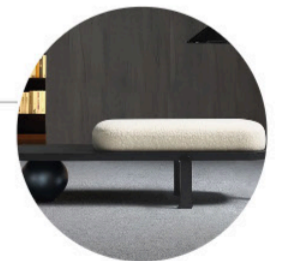
A volumetric form that evokes mystery



A route through the space explored the idea of negotiation and passing places, small pods where people could meet and see the displays. A sense of co-operation is built hinting at the idea of; if we work together, we can find solutions and a clear path through a difficult situation. This of course echoing the much bigger issues facing us with climate change and the environment - if we all work together, we can make a change.



RESEARCH: Seating for the exhibition.



Working with crystals and rust while also integrating steel beams to create an underground tunnel atmosphere.

