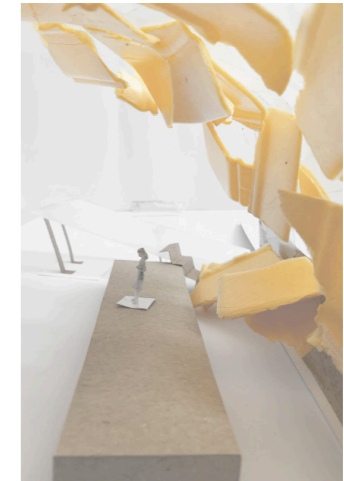
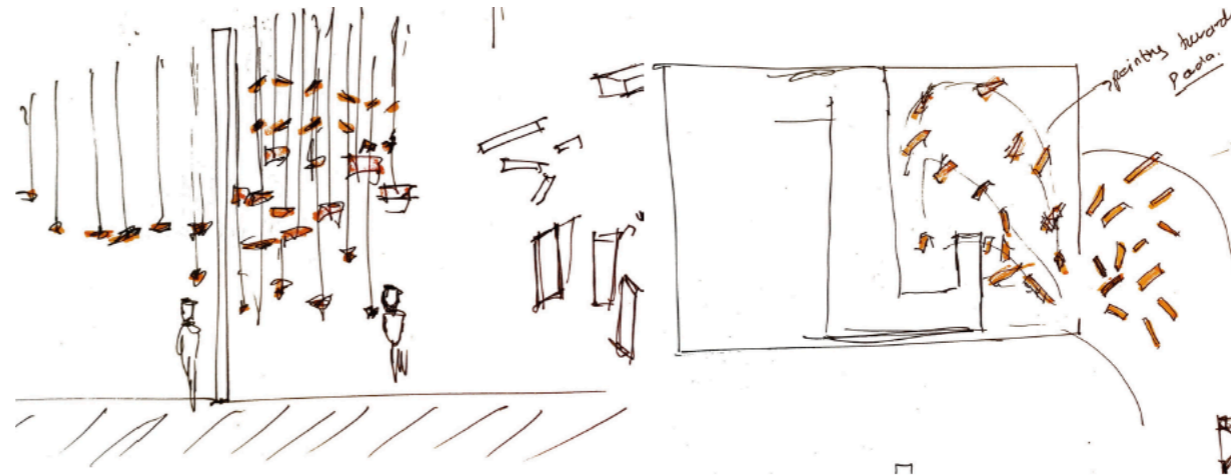


CELEBRATE THE SMALL

Exhibition Space

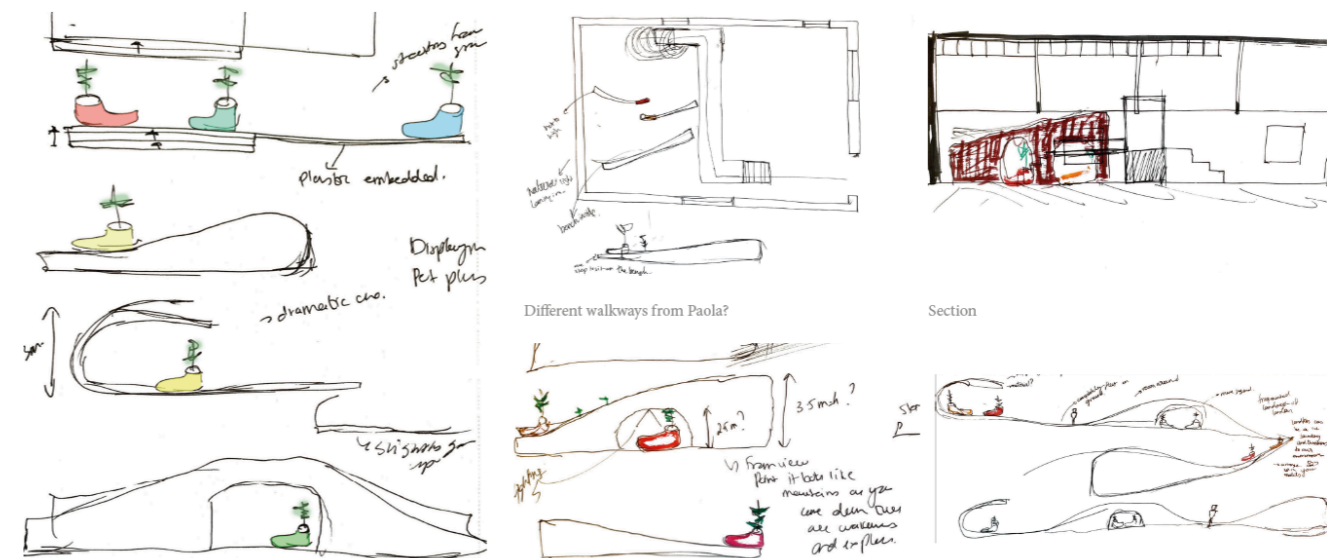
by Abeen Sami

BRIEF: Select two or three of the given makers and design an exhibition that promotes their work to a public audience. This exhibition is to raise public awareness of the fragility of the Earth's resources, highlighting the disruption the human impact is having on natural resources.



The aim was to create a dramatic juxtaposition between the two designers work - Paola's work is very fragile and not to be touched, whereas The New Raw's furniture is made for interacting. I wanted to create an observational/intimate/confined space for Paola, and an immersive/communal experience for The New Raw. This led to the narrative 'Control vs. Lack of Control' drawing parallels with humanities environmental plight and our quest in finding responsible resolutions.

Greeted by a hurricane of plastic 'waste' soaring above us, out of reach, out of our control, we are lead through to a raised platform which elevates you up to confront 'the problem'. The work of Paola sits, positively contrasting through layers of transparency affected by the participant. You then descend into a terrain of 'landfill' - where sculpted voids communicate the extraction of waste, re-used, saved, and now controlled by The New Raw.

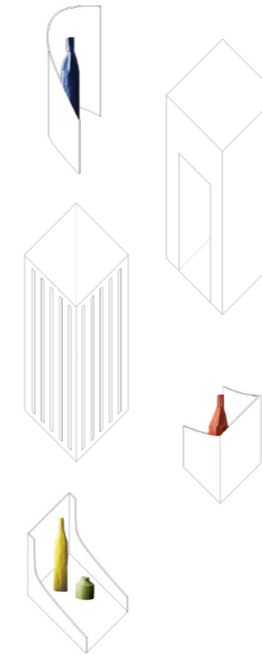
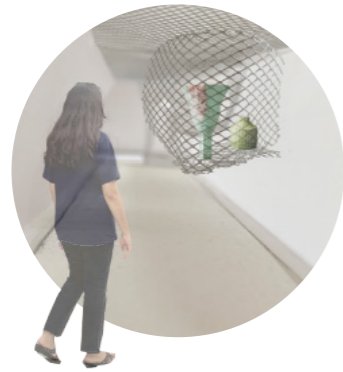


CELEBRATE THE SMALL

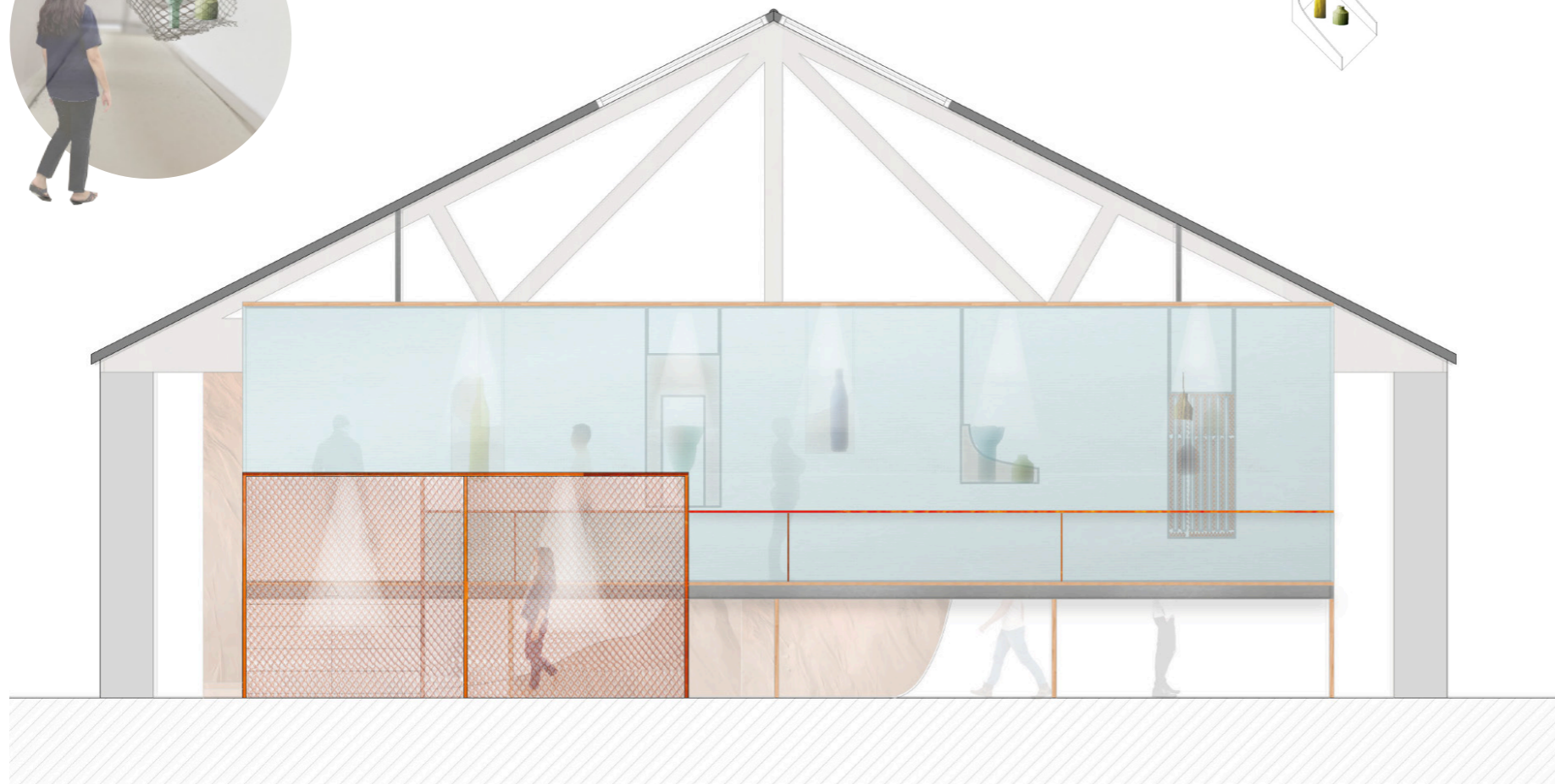
Exhibition Space



Paola's work is inspired by nature therefore the decision to display these objects in a delicate and fragile manner echoes the volatile state of the world. The display has different openings so people have to turn around to look at the work, curiosity and effort are rewarded.



This material was chosen because it opens & closes relative to the person passing through it's static charge, this means everyone will reveal the objects differently and have a unique interaction with the sculptures.

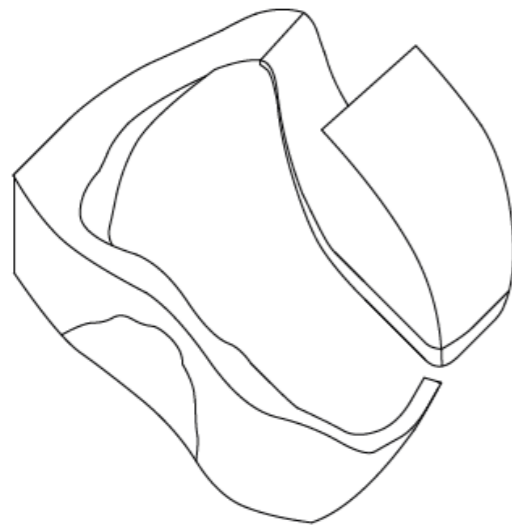
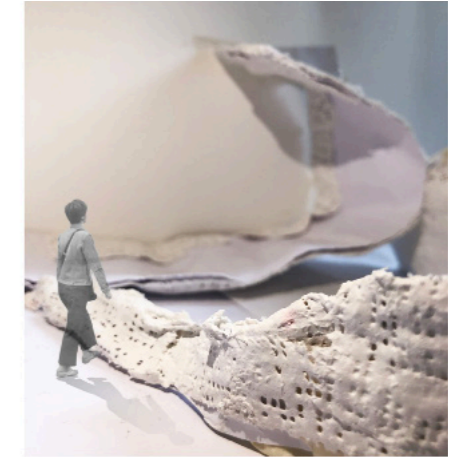


When people enter they can see the fabric opening and closing, hints of Paola's work can be seen through the layers - and beyond the bridge, glimpses of The New Raw 'landfill' mounds are visible.



CELEBRATE THE SMALL

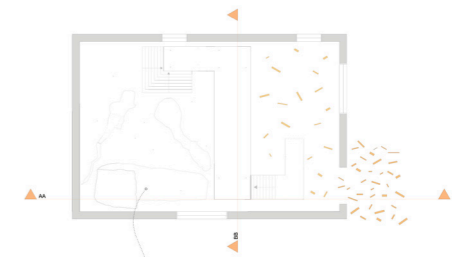
Exhibition Space



The New Raw benches within the 'landfills' are angled towards one another invoking a collective interaction, sense of community, city, and togetherness.

CELEBRATE THE SMALL

Exhibition Space



As you progress through the exhibition, gradually things become more controlled, elements that were seemingly out of reach become tangible, and there is a sense of renewal as we find more environmentally friendly methods of production through the designers work and attitudes.

