

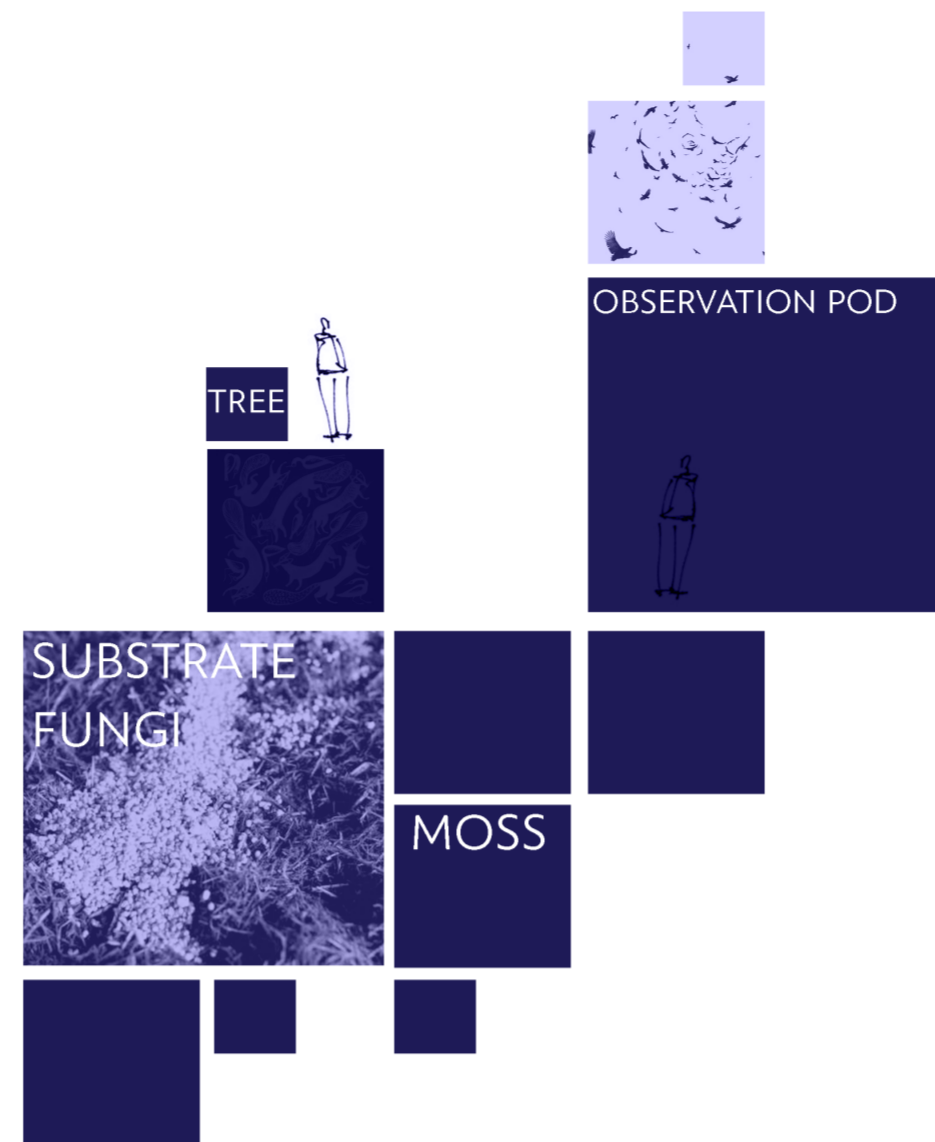
Urban Sanctuary

A space that promotes biodiversity in the city

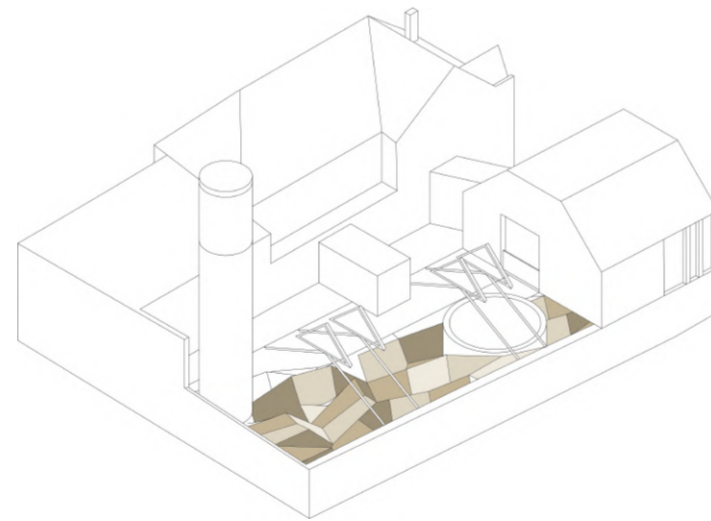
This space brings the idea of a 'forest' into the city, providing a sanctuary for humans to reconnect with nature and wildlife. The goal of this project is to promote physical and mental health and reduce air pollution in the area. The main idea was to create a new environment above and below ground where people can observe animals. This space is open to all, with residents enjoying it during the day, children after school, and animals throughout the day and night, as there are features that make it an ideal shelter for them. At the core of this project is the concept of "re-worlding," and ideally nature reclaims the building, harmonizing the urban landscape with the natural world.



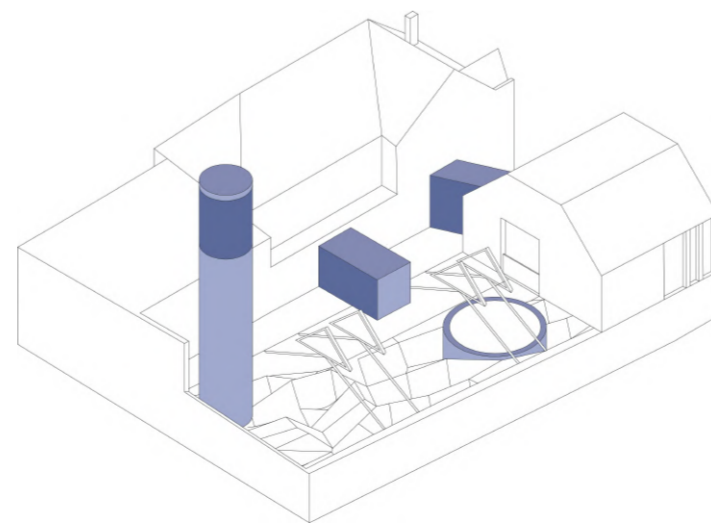
PROGRAMME



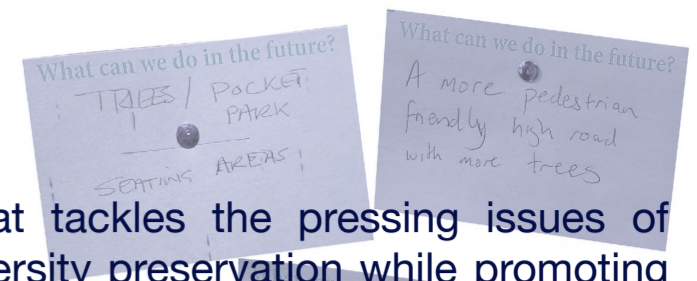
strategy / ADD



strategy / CONNECT

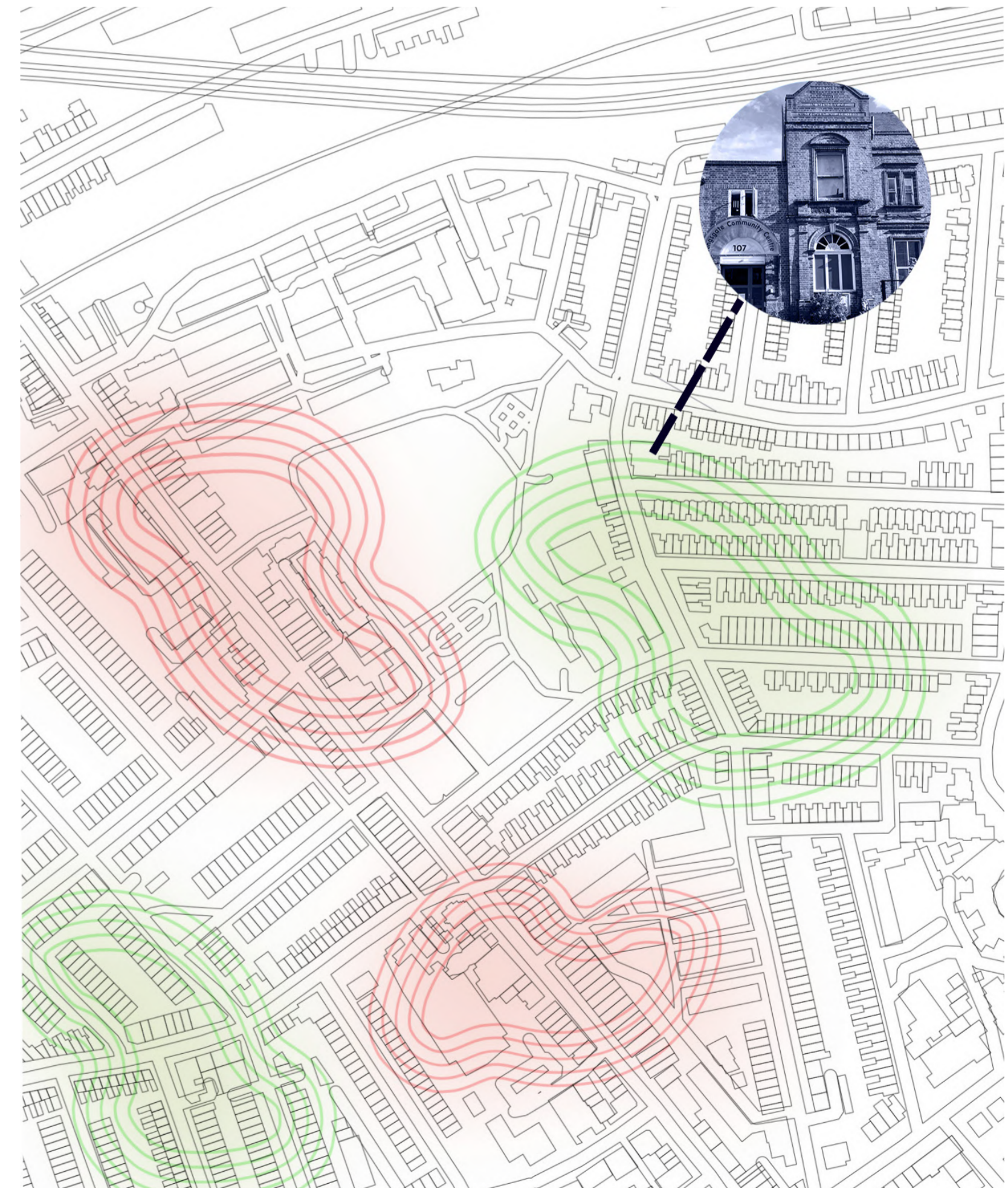


Reproducing sustainability: a model to promote biodiversity



The showcased project serves as a model that tackles the pressing issues of climate change, energy consumption, and biodiversity preservation while promoting a sustainable way of living. Situated within an urban environment, this project harmoniously coexists with nature, providing a space co-habited by humans and wildlife. It shelters and supports local wildlife, but at the same time encourages the well-being of people, facilitating a reconnection to the natural world. This model mainly involves the implementation of artificial burrows, which create a unique connection between humans and wildlife. By offering a safe space, these burrows allow wildlife to seek refuge while enabling humans to observe and appreciate them without violating their natural habitat.

This model can be replicated in all kinds of spaces and can create an harmonious cohabitation between humans and the natural world, promoting a sustainable and balanced future for all.



Material library: recreating the natural element

The material library within this building plays a vital role in recreating and integrating nature. The material palette combines the preservation of existing materials with the introduction of new materials that enhance the developing of nature, I chose to use Poikylohydric living walls, designed to encourage the growth of flora, and bee brick, that provide a habitat for pollinators. Nature served as the primary inspiration for this project, prompting extensive material experimentation. As depicted in the images on the side, the process involved creating plaster burrow replicas, as well as capturing the intricate texture of silkworms through 3D modeling, and physically reconstructing it with alternate materials. Image (a) showcases the hole to make the underground accessible for animals, while image (b) illustrates the connection established between the human and animal spaces, ensuring a seamless coexistence.

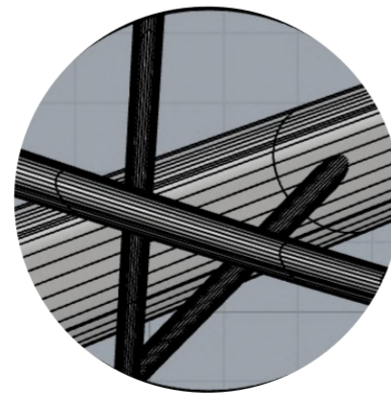
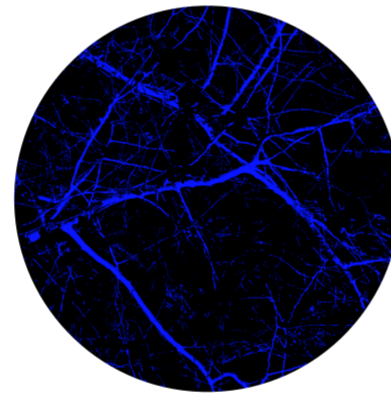
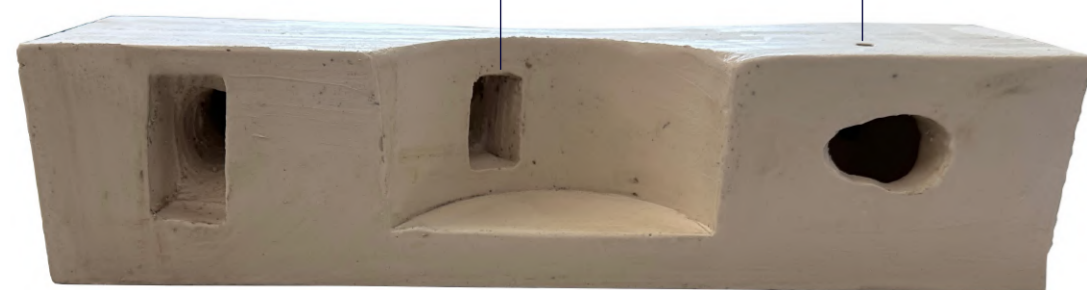


- 1 - Wood decking (natural walnut)
- 2 - Stainless steel (Omega 1520)
- 3 - Magnetic glass
- 4 - Insulation
- 5 - Poikylohydric living walls
- 6 - Basalto tiles.
- 7 - Existing victorian tiles
- 8 - Bee Bricks



a

b



Designing decay

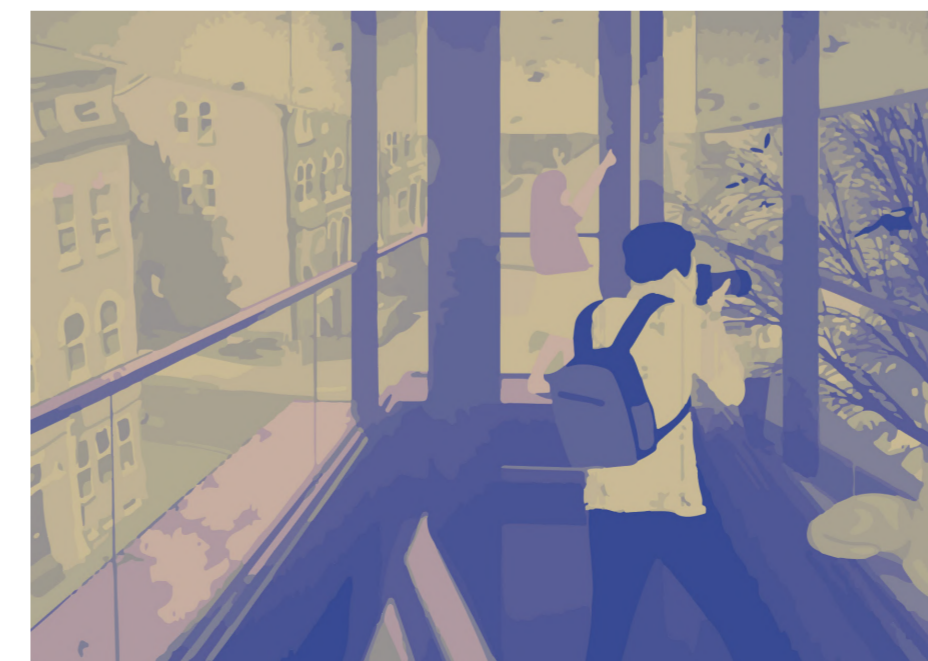
The storyboard represents my vision for the building, both in the present and in the future. Each element added to the structure has been intentionally designed to eventually fade away, allowing nature to gradually reclaim the entire building. Moreover, the storyboard offers a glimpse into a future where the building has been entirely reclaimed by nature, resulting in a space that becomes natural landscape. The storyboard shows a variety of activities for visitors to enjoy, starting from the moment they enter the space it is clear that nature blends with the built environment and every space invites visitors to explore and appreciate the ecological wonders that surround them.



present



future



Urban Sancturary

Technical drawings: plans

The basement serves as a central hub for visitors, offering a starting point for their nature-filled journey. It features a rainwater-collecting water tank and hides for animal observation. Visitors can engage with and closely observe wildlife at every turn. There is also a classroom and workshop area where children can learn about wildlife before experience it firsthand. Additionally, there is a specific area allocated for composting and recycling, with a focus on repurposing coffee grounds. This sustainability initiative demonstrates a commitment to waste reduction and highlights the interconnectedness of ecological practices and human activities.

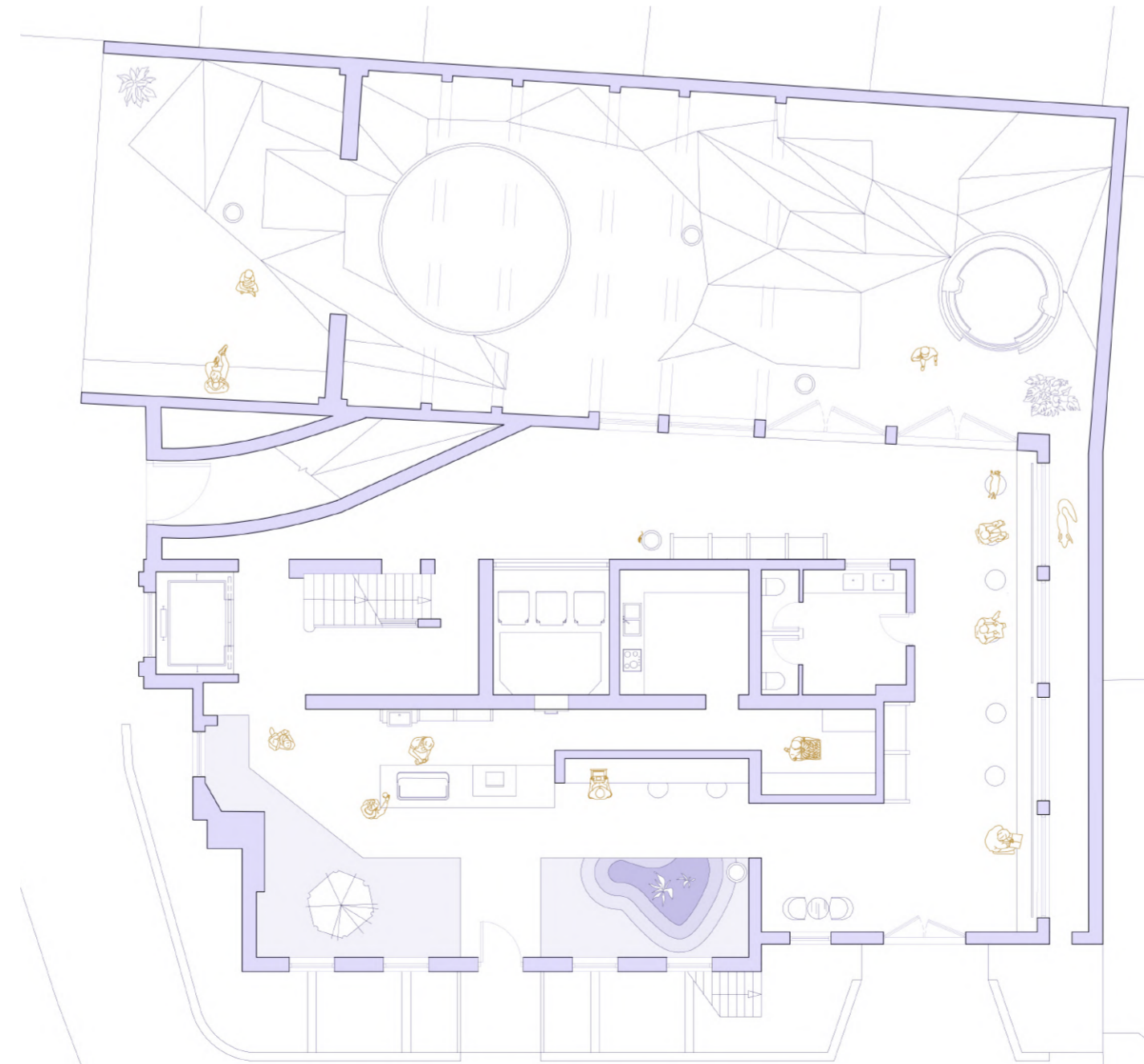
The ground floor of the building has an outdoor and indoor space, the entrance is accessed via a bridge surrounded by voids, providing intriguing perspectives and allowing for observation opportunities. Whether standing or sitting, visitors can immerse themselves in the surroundings and engage in the act of observing. This unconsciously create a deeper connection with the natural environment. The first floor of the building primarily consists of an exhibition space, as shown in the render, along with an observation deck. The observation deck offers a vantage point to observe birds, and additionally, visitors can observe them from other areas within the building.



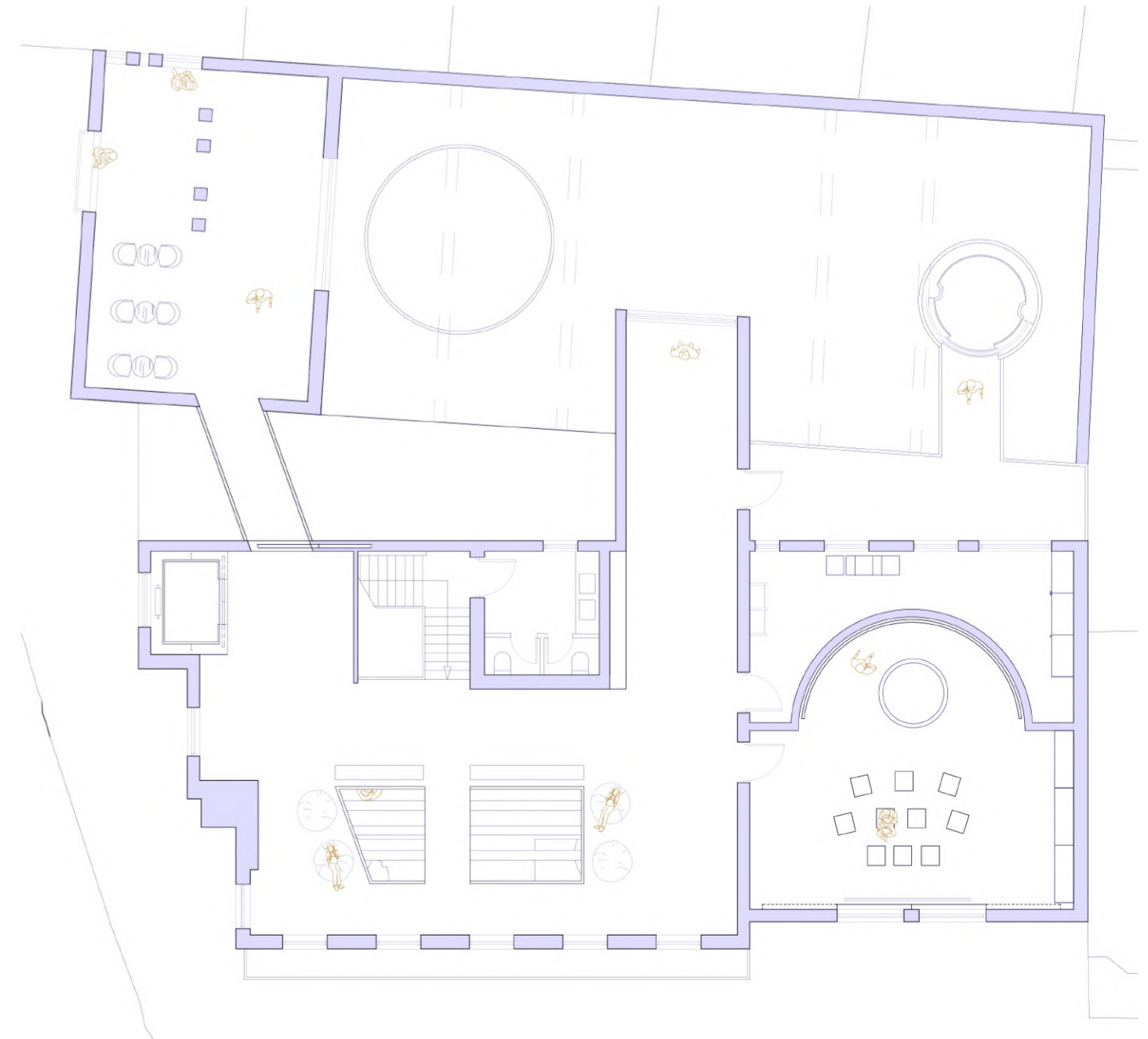
Basement plan scale 1:100



Ground floor plan scale 1:100



First floor plan scale 1:100



The central concept of this idea revolves around enriching everyday actions with meaningful experiences. The building serves not only practical purposes but also actively fosters biodiversity. In the drawings it is possible to see everyday activities, but this become an experience itself, like sitting on a stool and having breakfast: glass barrier separates humans from animals, yet the leftovers attract rats, turning what could be perceived as a problem into a solution and the same space is happily co-habited. Bird droppings take on an artistic role: instead of getting rid of it, the ceiling is made out of glass and acts as a blank canvas.

This innovative design creates a unique interplay between humans, animals, and the built environment, offering an engaging and thought-provoking experience at every turn.

The shift is represented by embracing actions rather than avoiding them, recognising that nature will always prevail and dominate this world.

The everyday as an experience:

The main concept is to merge everyday actions with meaningful experiences in a building that promotes biodiversity. By engaging with the building's design, visitors develop an unconscious connection to nature. Daily activities become immersive encounters, transforming perceptions and fostering a deep appreciation for the natural environment.

