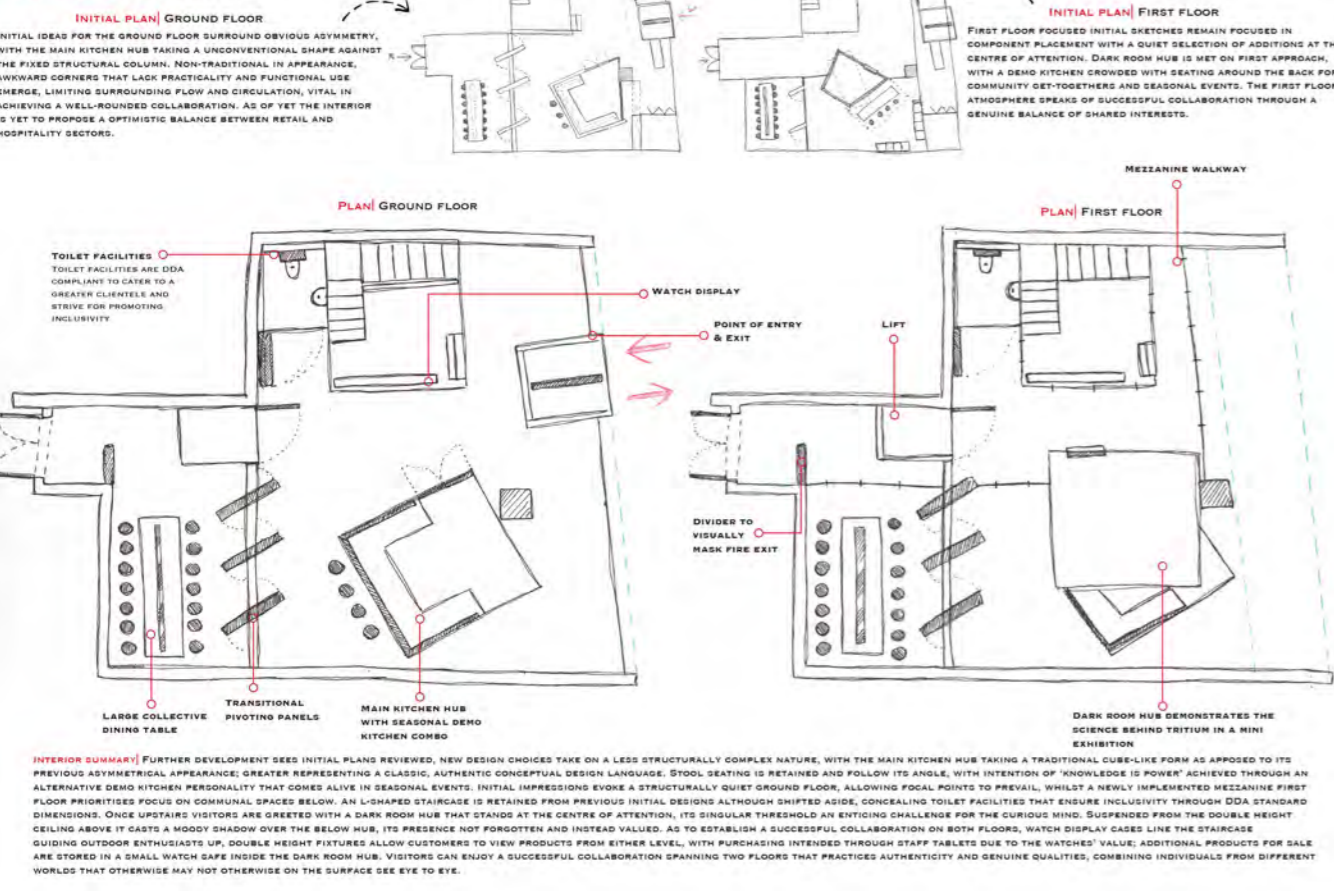
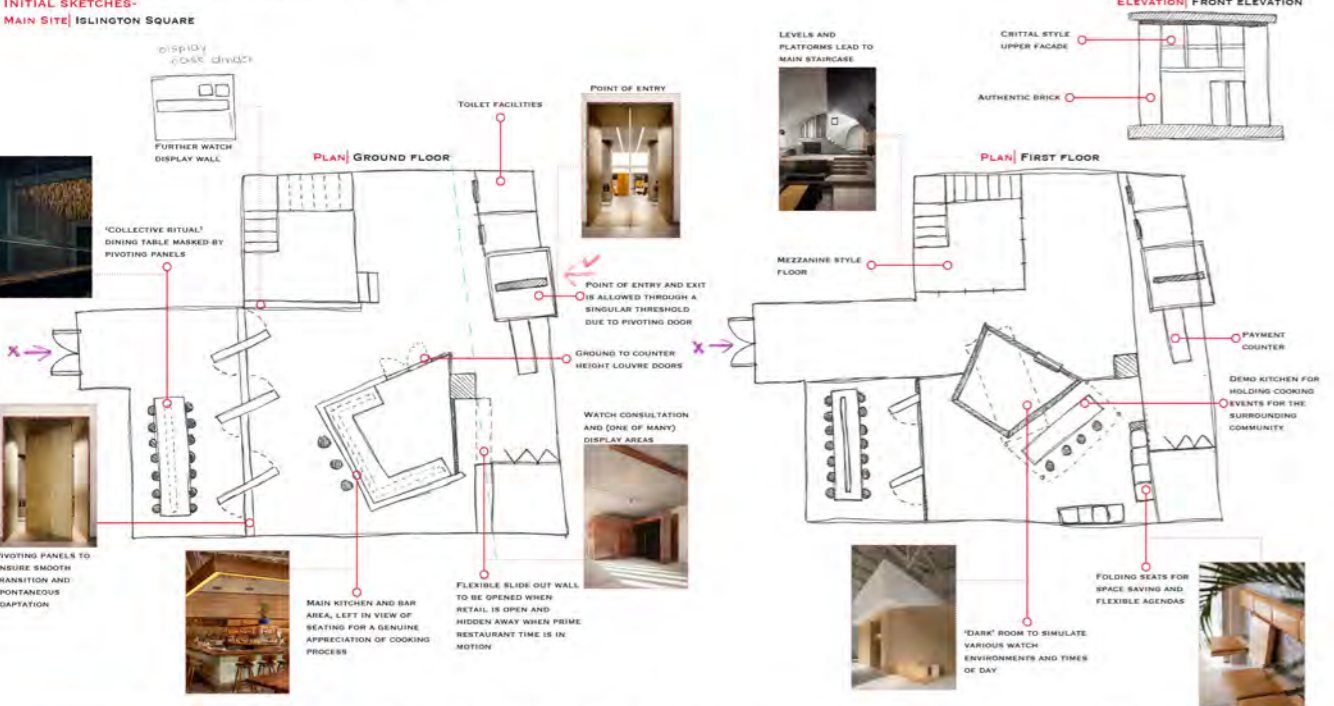


RETAIL COLLABORATION/ COMMUNITY RESTAURANT NEWLY PROPOSED LAYOUT-
NEW LAYOUT CONCEPT-
FEATURED SITE ISLINGTON SQUARE



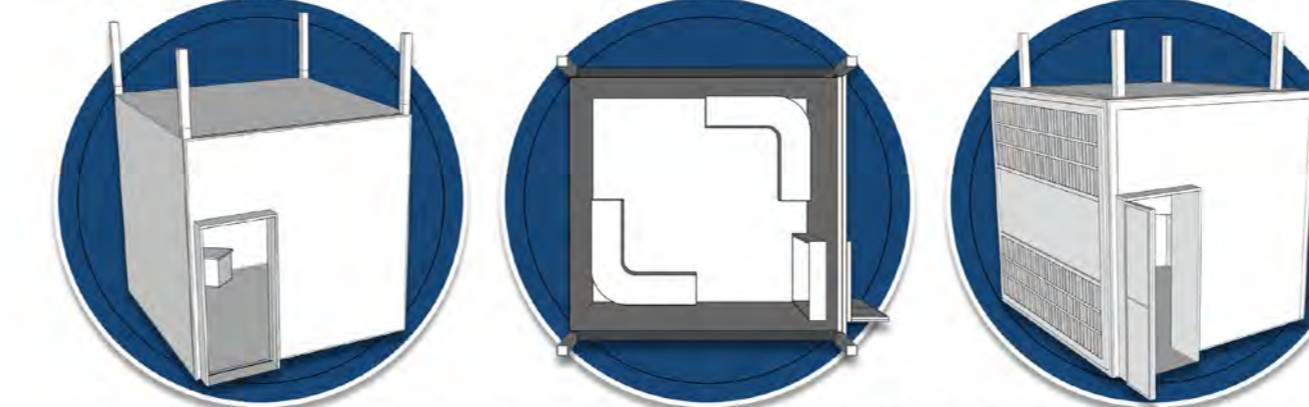
RETAIL COLLABORATION/ COMMUNITY RESTAURANT INITIAL IDEAS-
MAIN SITE ISLINGTON SQUARE



RETAIL COLLABORATION/ COMMUNITY RESTAURANT DETAIL DEVELOPMENT-
DESIGN DETAIL DEVELOPMENT-



INITIAL STAIRCASE PLANS PROPOSED A CLASSIC L, WITH A SINGULAR LANDING HALF WAY UP. UPON TRIAL WITHIN THE ISLINGTON SQUARE SITE POSITIONING DID NOT ALLOW ITS TRADITIONAL FORM TO PREVAIL, AS A RESULT OF THE FIRST FLOOR EXTENT. WITH REVISIONS NEEDED THE STAIRCASE BEGAN TO GRASP A U-SHAPED APPEARANCE ALMOST DOUBLE BACKING ON ITSELF, IN AN ATTEMPT TO COMPACT ITS FORWARD POINT OF TRAVEL. VERTICAL OAK SPINDLES AT REGULATION ENSURE CLIENT SAFETY, WHILST MAKING USE OF THE DOUBLE-HEIGHT INTERIOR: AN ESSENCE OF LEVITATION IS PROVOKED. NOW SET ON A STRUCTURAL SWITCH, A DOUBLE SET OF LANDINGS ENSURES GUESTS HAVE A MOMENT OF REST AND PASSING PLACE UPON NAVIGATING THE UPWARDS PATH THANKS TO THE STRIP LIGHTING GUIDE, ITS LOOPING NATURE A REMINDER OF GENUINE BELONGING AND TOGETHERNESS.



ORIGINAL INTENTIONS SURROUNDED A GEOMETRIC FORM WITH SUSPENDED CORNER-POSTS, MOUNTED ON THE FIRST FLOOR CEILING. UPHOLDING A SIMILARITY TO THE MAIN THRESHOLD DOWNSTAIRS, THE DOORWAY EXTRUDES PAST THE HUBS BOUNDARY, CREEPING ONTO THE MEZZANINE OUTSIDE. INTERIOR PLANS DEMARCAT A CURVED SET OF BENCHES, FACING ONE ANOTHER THEIR LOOPING SHAPE HAS SOMEWHAT OF A CIRCULAR RESEMBLANCE THAT NODS TO THE SHIFTING FUNCTION OF THE COLLABORATION SHOWCASED; A SENSE OF UNITY IS OBTAINED. THE HUB ITSELF ACTS AS A MINI EXHIBITION FOR A DEMONSTRATIVE LOOK AT THE SCIENCE BEHIND TRITIUM WITH A CEILING MOUNTED DISPLAY CASE SUSPENDED AT EYE LEVEL, HOUSING GLOWING TEST TUBES. FINAL PROPOSALS SEE MINOR DEVELOPMENTS SPECIFICALLY AIMED AT EXTERIOR APPEARANCE. IN THIS CASE THE CORNER POSTS SHRINK IN FOR A TRULY GENUINE GRAVITY-DEFYING STRUCTURE.



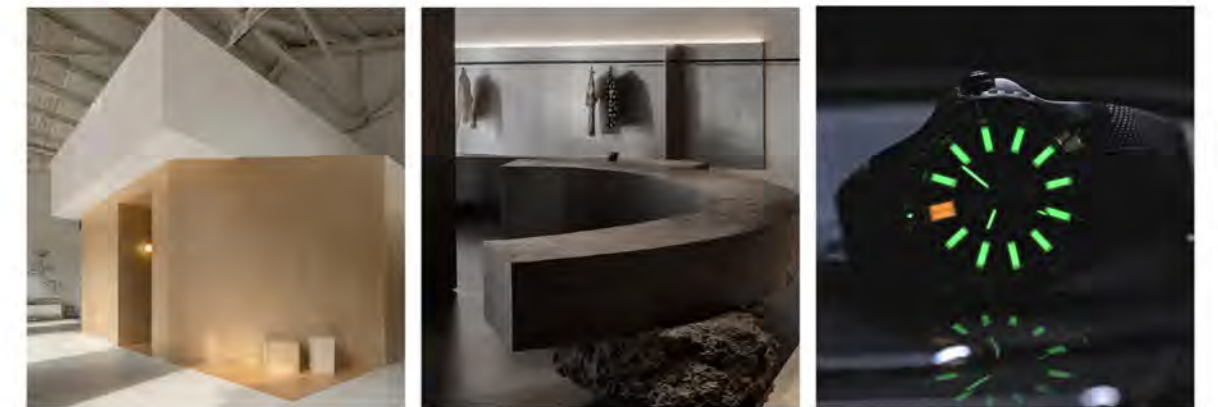
ARGUABLY ONE OF THE FOCAL POINTS UPON ENTRY, THE MAIN KITCHEN HUB VARIOUSLY TRANSFORMS DEPENDING ON EACH DAY'S PRIORITY. DURING THE DAY ALUMINIUM SHUTTERS ARE PROMINENTLY RAISED FOR AN OPEN-STYLE KITCHEN-DINING EXPERIENCE. DINERS ARE INVITED TO TAKE A SEAT AND PEER INTO THE PROCESSES BEHIND THE FOOD BEING PREPARED AND CONVERSE WITH THOSE WHO SHARE A GENUINE PASSION FOR THEIR COMMUNITY AND ITS FUNCTION. WHEN FINISHED FOR THE DAY A HANDLE AND FIXED PULL-CHORD ALLOW EASE CLOSURE FOR THE OVERHEAD SHUTTERS. OFF TO THE SIDE SWING DOORS MOVE BOTH WAYS FOR EASE OF ACCESS, WHILST A CENTRED DOWNLIT LIGHT HANGS OVER THE MAIN COUNTER, EMITTING A WELCOMING WARM GLOW; STORAGE FOR SUPERMARKET AND DELIVERED PRODUCE IS INTENDED WITHIN THE PULL-OUT CABINETS ON EACH SIDE. DURING SEASONAL EVENTS A DEMO KITCHEN EMERGES WHERE IFP CAN HOST GET TOGETHERS THAT TEACH THOSE THEY SUPPORT.

FEATURED SITE | ISLINGTON SQUARE

GENUINE TRADITIONAL AUTHENTIC CHANGE INDIVIDUAL BELONGING



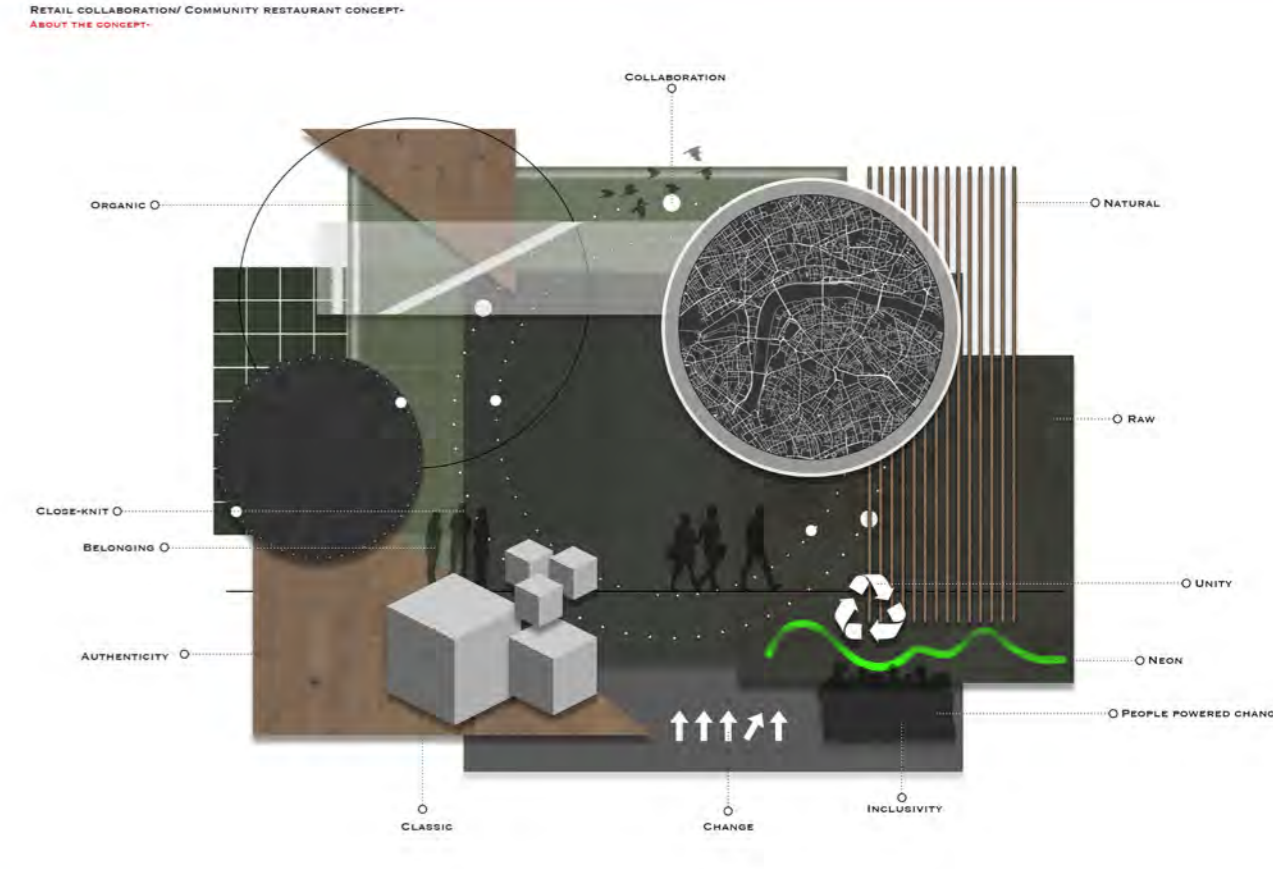
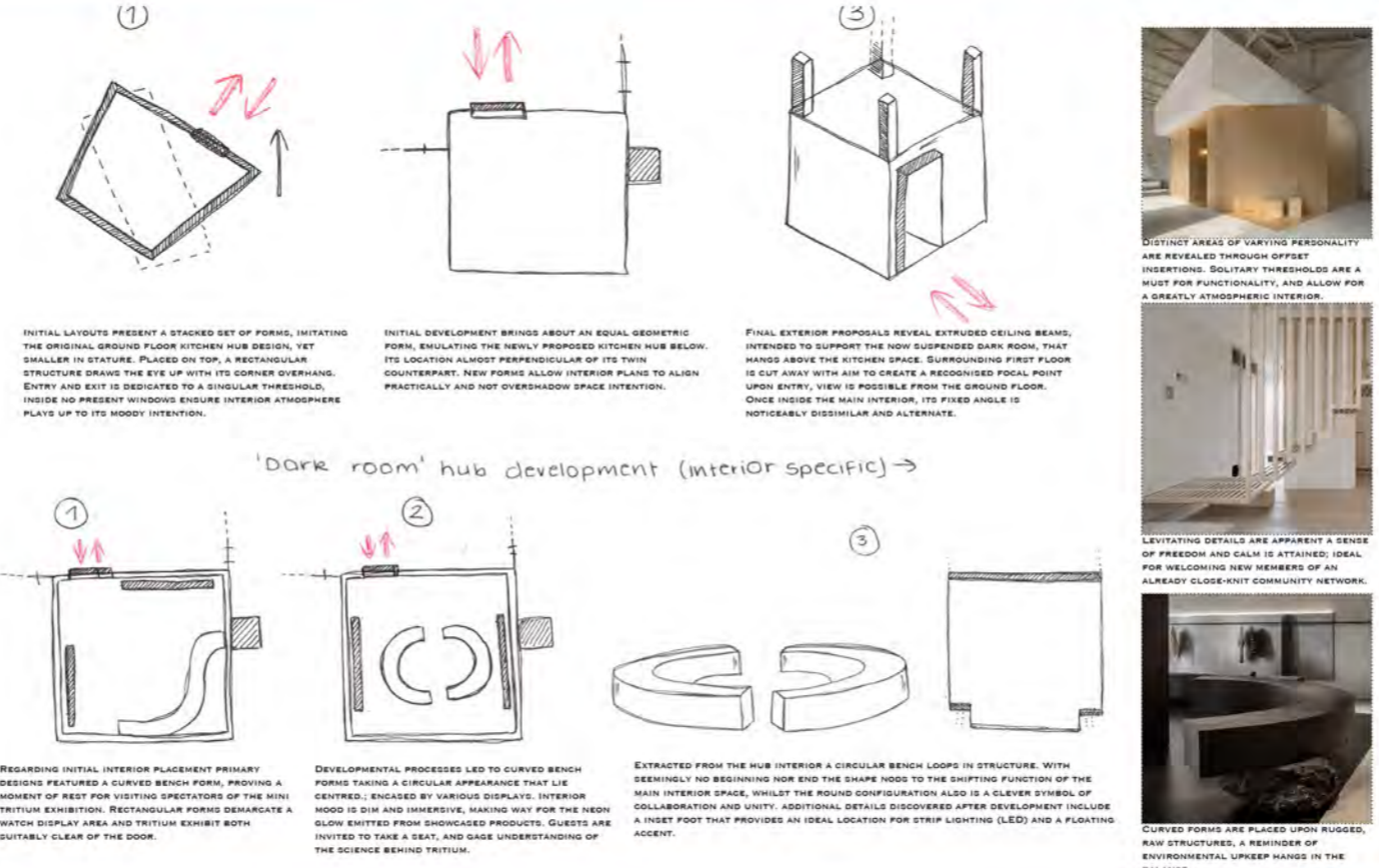
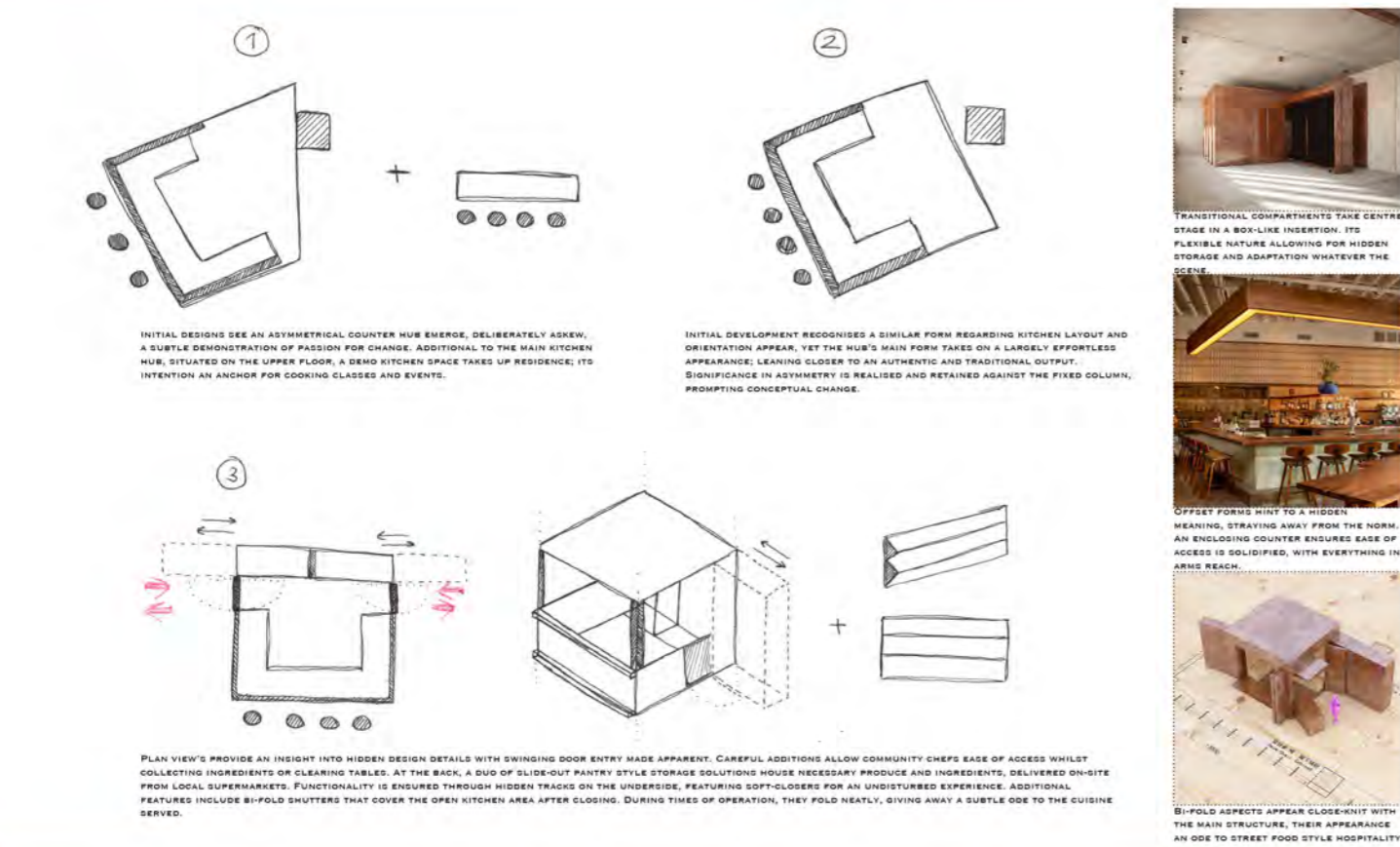
SUSPENDED STAIRCASE STAIRCASE LANDINGS DIRECTIONAL STRIP LIGHTING



ASYMMETRICAL BOOTHS CURVED BENCH-LIKE SEATING NEON TRITIUM DEMONSTRATION



TRANSITIONAL FORMS WITH VARIOUS COMBINATIONS GEOMETRIC INSERTIONS AS FOCAL POINTS & METAL MATERIALITY BAR SEATING





POP-UP STORE, OSLO
WITH FOCUS AIMED AT THE OVERHEAD FREE-FORM LIGHT A RELAXED FORM IS ACHIEVED. POTENTIAL FOR SYMBOLISM IN FUTURE INTERIORS IS ATTAINED, A REPRESENTATION OF THE RUGGED TERRAIN AND LIFE'S UPS AND DOWNS.



WOODEN BOX STUDIO, CHINA
ASYMMETRICAL BOX INSERTIONS STRUCTURE A OTHERWISE VASTLY OPEN-PLAN INTERIOR. WITH NO VISIBILITY FROM INSIDE OR OUT, INTERIOR ATMOSPHERE IS GUARANTEED DARK, PERFECT FOR FUTURE PROJECTS LOOKING FOR A 'DARK' ROOM TO SIMULATE WATCH NIGHT USE.



DISPLAY CASES, FLAGSHIP STORE, NYC
AUTHENTIC, RAW MATERIALITY MEETS MAN-MADE WITH A GROUP OF REPETITIVE DISPLAY UNITS APPLIED SIMULTANEOUSLY. ONE SIDE HOUSING PRODUCTS, THE OTHER DIGITAL SCREENS PROJECTING THE BRANDS IDENTITY.

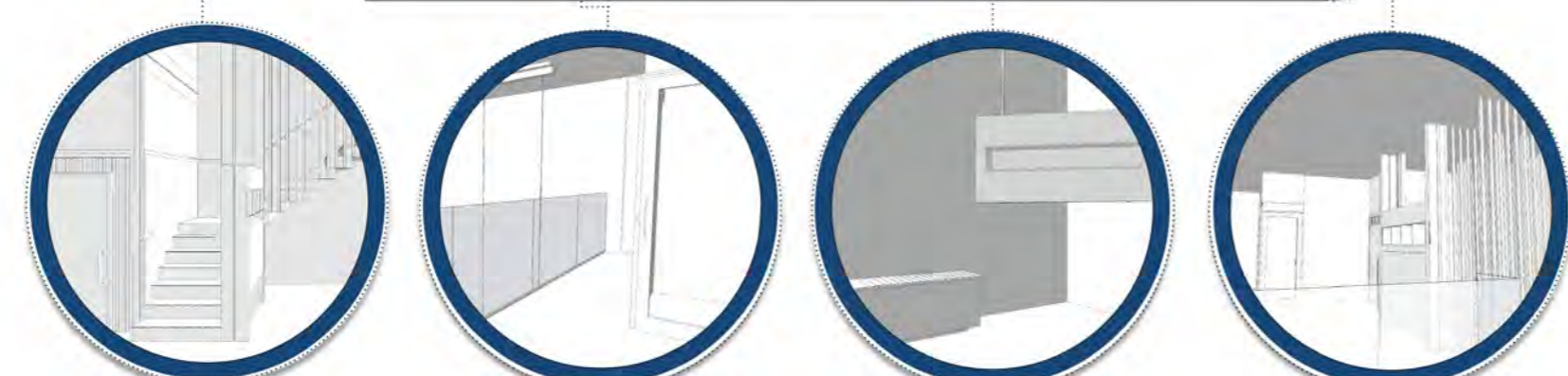
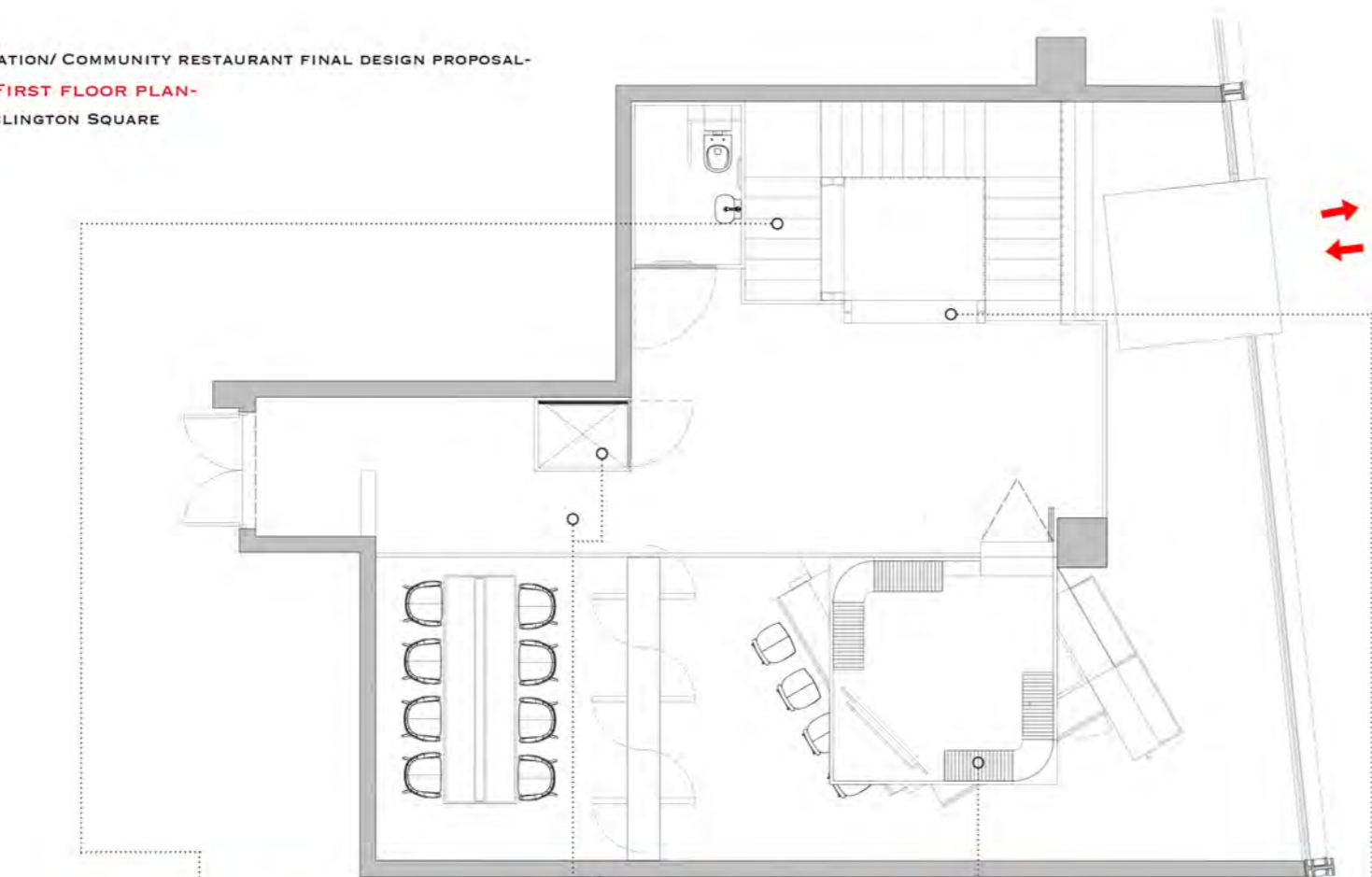


DISPLAY INSERTION, CHICAGO STORE
INTERIOR DISPLAYS TAKE A VERTICAL ARRANGEMENT, AROUND THE BASE A SEAT LIKE STRUCTURE PROVIDES A MOMENTARY PLACE OF CONTEMPLATION AFTER A TIME OF CAREFUL BROWSING.



PLATFORMS & LEVELS
VARIOUS LEVELS AND PLATFORMS LITTER THE SPACE, JOINED BY A SERIES OF MINOR STAIRCASES VARIOUS ZONES EMERGE, WITHOUT WALL CONSTRAINT.

RETAIL COLLABORATION/ COMMUNITY RESTAURANT FINAL DESIGN PROPOSAL-
FINAL DESIGN FIRST FLOOR PLAN-
FEATURED SITE| ISLINGTON SQUARE



STAIRCASE
VISUAL GUES DEMONSTRATE A SEEMINGLY LEVITATING STAIRCASE, SUPPORTED BY DOUBLE HEIGHT SPINDLES THAT DRAW THE EYE UP, ILLUDING CURIOSITY AND WHAT LIES BEYOND THE FRONTIER. UPON STARTING THE CLIMB A HANDRAIL RUNS THE LENGTH OF THE STAIRCASE ENSURING CUSTOMER EXPERIENCE REMAINS A VITAL ENDEAVOUR.

MEZZANINE FLOOR & LIFT
GUARDED BY A GLASS BALUSTRADE THE MEZZANINE FIRST FLOOR PROVIDES AN AERIAL VIEW OF THE CHATTER BELOW, PROMPTING GUESTS TO APPRECIATE THE CLOSE-KNIT COMMUNITY ATMOSPHERE AND ENCOURAGE INVOLVEMENT. TO THE SIDE A STANDARD LIFT SUPPLIED BY LIFT DESIGNER STANNAH, ENSURES INCLUSIVITY IS NOT FORGOTTEN.

DARK ROOM HUB INTERIOR
NO MATTER THE SEASON, NOW THE TIME THE DARK ROOM HUB REMAINS LARGELY UNLIT TO UPHOLD ITS TRUE INTENTION. ONCE INSIDE CURIOS MINDS SEE A NEON TRITIUM DISPLAY VITAL IN PROMOTING UNIQUE PROCESS AND SALES. GUESTS ARE INVITED TO TAKE A SEAT AND IMMERSE THEMSELVES IN PEOPLE POWERED CHANGE.

DISPLAY CASE
MAKING UP THE PERIMETER OF THE STAIRCASE A FURTHER DISPLAY CASE BEARS A DETAILED SELECTION FROM EACH COLLECTION, ITS FORM INTENTIONALLY SIMPLE AS NOT TO OVERSHADOW THE PRODUCTS DISPLAYED. LIGHTING IS IMPLEMENTED ON THE INSIDE OF EACH SHELF, DRAWING THE EYE CLOSER, THANKS TO THE SURROUNDING INTERIORS DIM AMBIENCE.

RETAIL COLLABORATION/ COMMUNITY RESTAURANT FINAL DESIGN PROPOSAL-
FINAL DESIGN SECTION-
FEATURED SITE| ISLINGTON SQUARE



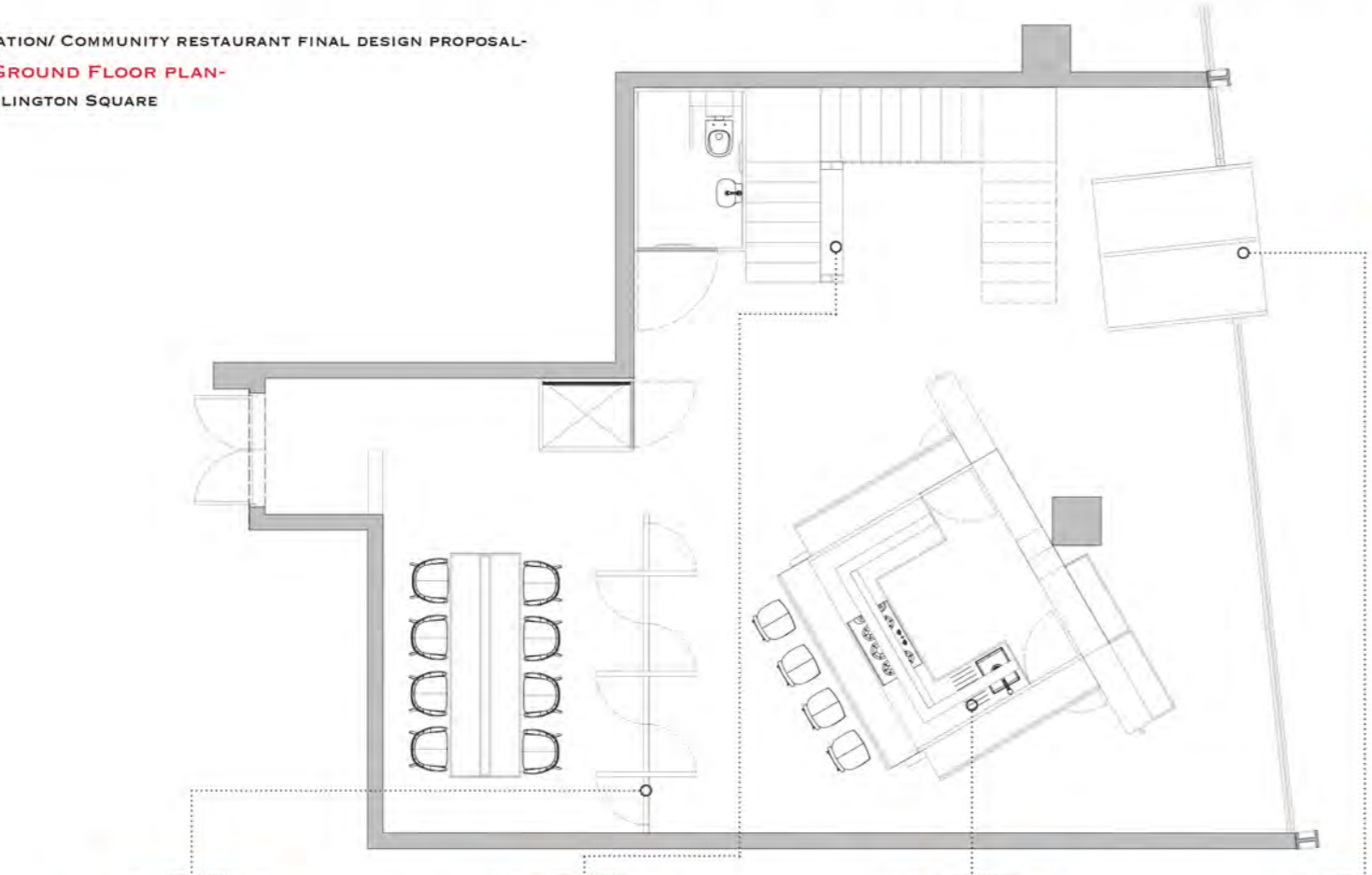
COLLECTIVE DINING TABLE
WITH A SOLE PURPOSE TO BRING INDIVIDUALS TOGETHER FROM VARIOUS BACKGROUNDS A COLLECTIVE EATING VENTURE RESTS ADJACENT TO THE PREP KITCHEN HUB. BOUNDARIES SEEM ELIMINATED ONCE PRESENT THE IDEOLOGY THAT THERE SHOULD BE NO ULTIMIOR MOTIVES WHEN SHARING GOOD FOOD PREVAILS.

TOILET FACILITIES
INCLUDED FOR THEIR FUNCTIONAL NECESSITY AND CUSTOMER PEACE OF MIND FIRST IMPRESSIONS HIGHLIGHT AUTHENTIC DETAILS AND TRADITIONAL PANNELLING. ALTHOUGH SET BACK AND PARTIALLY OUT OF SIGHT, THEIR DDA STANDARD DIMENSIONS GUARANTEE INCLUSIVITY AND THIS CANNOT BE COMPLETELY HIDDEN TO THE EYE.

DARK ROOM HUB EXTERIOR
SUSPENDED ON SECURED BEAMS THE EXPERIENTIAL SPACE APPEARS TO DEFY GRAVITY IN THE UNUSUAL OF WAYS. TO ENSURE TOTAL DARKNESS, A STEEL SHUTTER INSPIRED DOOR CLOSERS WITH EASE, TO THE SIDE ACCENTED PANNELLING ENSURES CONTINUITY AND IDENTITY IS REPRESENTATIVE OF AUTHENTICITY AND OVERALL GENUINENESS.

COMMUNITY PLANTERS
PROUDLY VIEWED FROM THE PARKING WINDOW A COUPLE OF PLANTERS HUDDLE AGAINST THE BACK OF THE KITCHEN SPACE. DETERMINED TO ENCOURAGE GROW YOUR OWN PRODUCE FOR ISLINGTON'S COMMUNITY, THE PLANTERS MAKE USE OF CRATES FROM SUPPLIED MARKET FOOD, LINED WITH RECYCLED PLASTIC PRODUCE TRAYS FOR UPKEEP, THE COMPONENT IS IDEAL FOR GROWING AN ARRAY OF HERBS AND MICROGREENS. GROW LIGHTS SUPPLY MUCH NEEDED LIGHTING, DUE TO LACK OF NATURAL LIGHT.

RETAIL COLLABORATION/ COMMUNITY RESTAURANT FINAL DESIGN PROPOSAL-
FINAL DESIGN GROUND FLOOR PLAN-
FEATURED SITE| ISLINGTON SQUARE



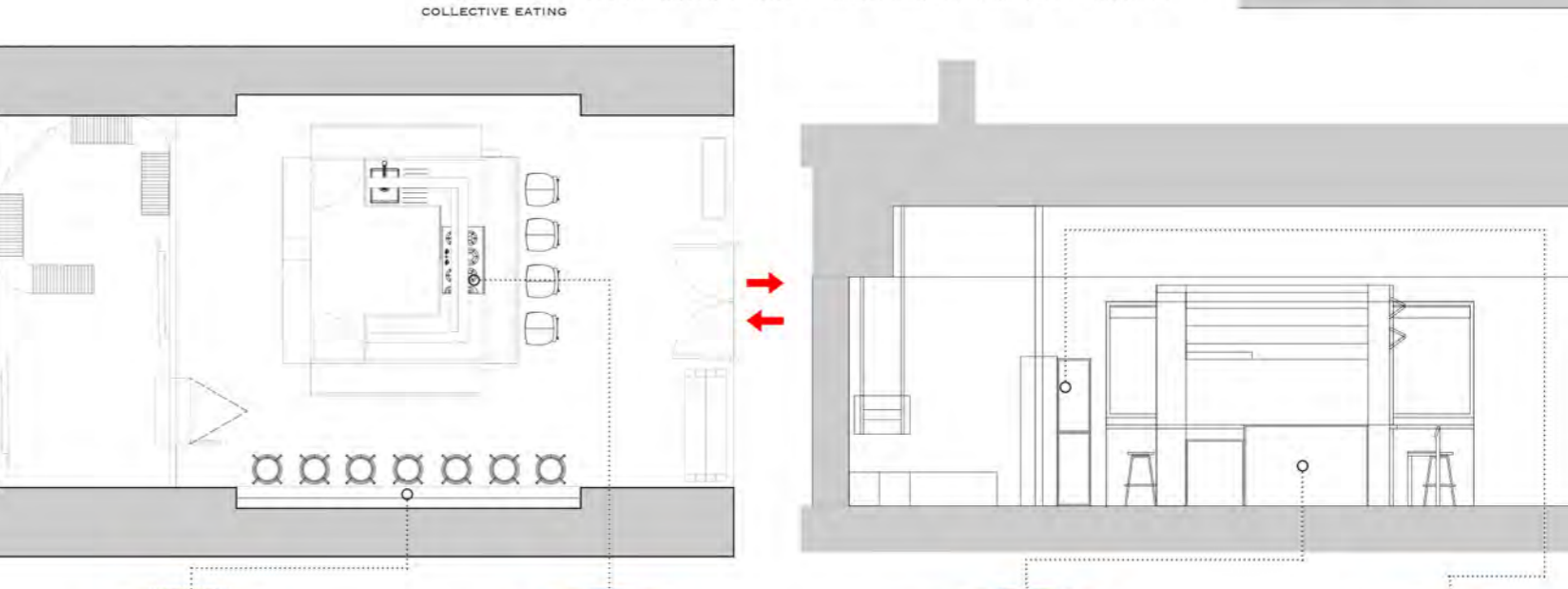
TRANSITIONAL PANELS
TRANSITIONAL PANELS ENCLOSE THE COLLECTIVE DINING AREA, WITH INTENT TO ENSURE ALL FEEL WELCOMED AND SAFE. DESPITE THEIR DIVISIONAL NATURE, GLASS MATERIALITY ENSURES A VIEW INTO THE KITCHEN IS RETAINED FOR AN ADEQUATE OPEN-STYLE KITCHEN EXPERIENCE.

DISPLAY CASE
SHOWCASING NITE'S RE-DESIGNED CLASSIC STYLE WATCHES, A SINGULAR WATCH FROM EACH COLLECTION IS DISPLAYED. SURROUNDING THE U-SHAPED STAIRCASE VISITORS ARE ENCOURAGED TO EXPLORE, AN OSE TO THE OUTDOORS NAVIGATED BY THE BRANDS MAVERICKS.

MAIN KITCHEN HUB
AT THE HEART OF THE COMMUNITY SECTOR A KITCHEN CUBE HOUSES ALL THE NECESSITIES FOR ONE-POT STREET FOOD SERVICE. FEATURING THE BETWIXT STOOL FROM HERMAN MILLER, GUESTS RESIDE IN COMFORT, ABLE TO SHARE THEIR LOVE FOR FOOD AND EXPERIENTIAL COOKING. LIGHTING IS COUNTER-CENTRED, EMITTING A DOWNLIT HUE.

POINT OF ENTRY
WITH A RE-DESIGN NOTED, A NEWLY PROPOSED FACADE ENSURES THE INTERIOR REMAINS DARK AND MOODY. AT ITS HEART A PIVOTING THRESHOLD CREATES A WALKWAY EITHER SIDE, GUESTS ARE ABLE TO ENTER AND EXIT AS THEY PLEASE. AFTER CLOSING ITS PROPOSED STEEL MATERIALITY IS EASY TO MANOEUVRE.

RETAIL COLLABORATION/ COMMUNITY RESTAURANT FINAL DESIGN PROPOSAL-
FINAL DESIGN PLAN & SECTION-
FEATURED SITE| COAL DROPS YARD



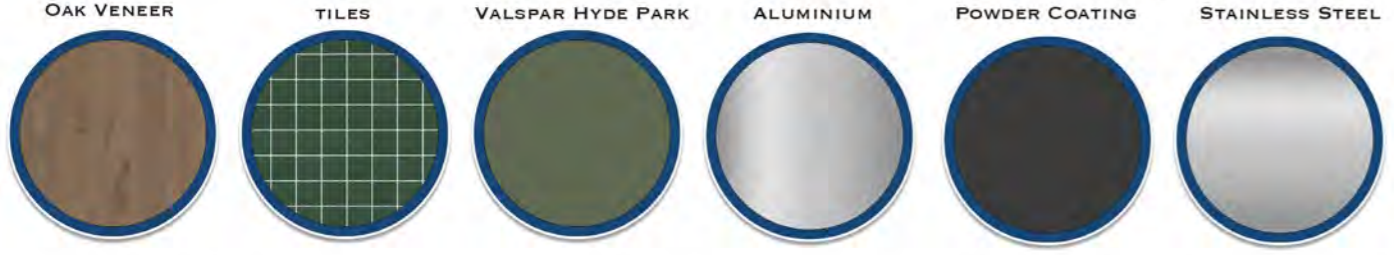
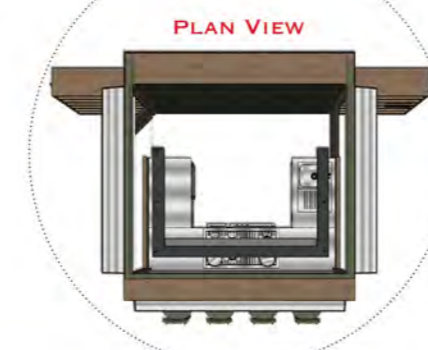
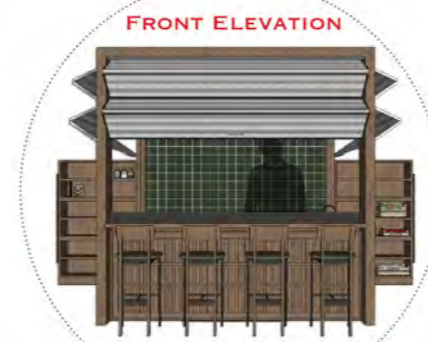
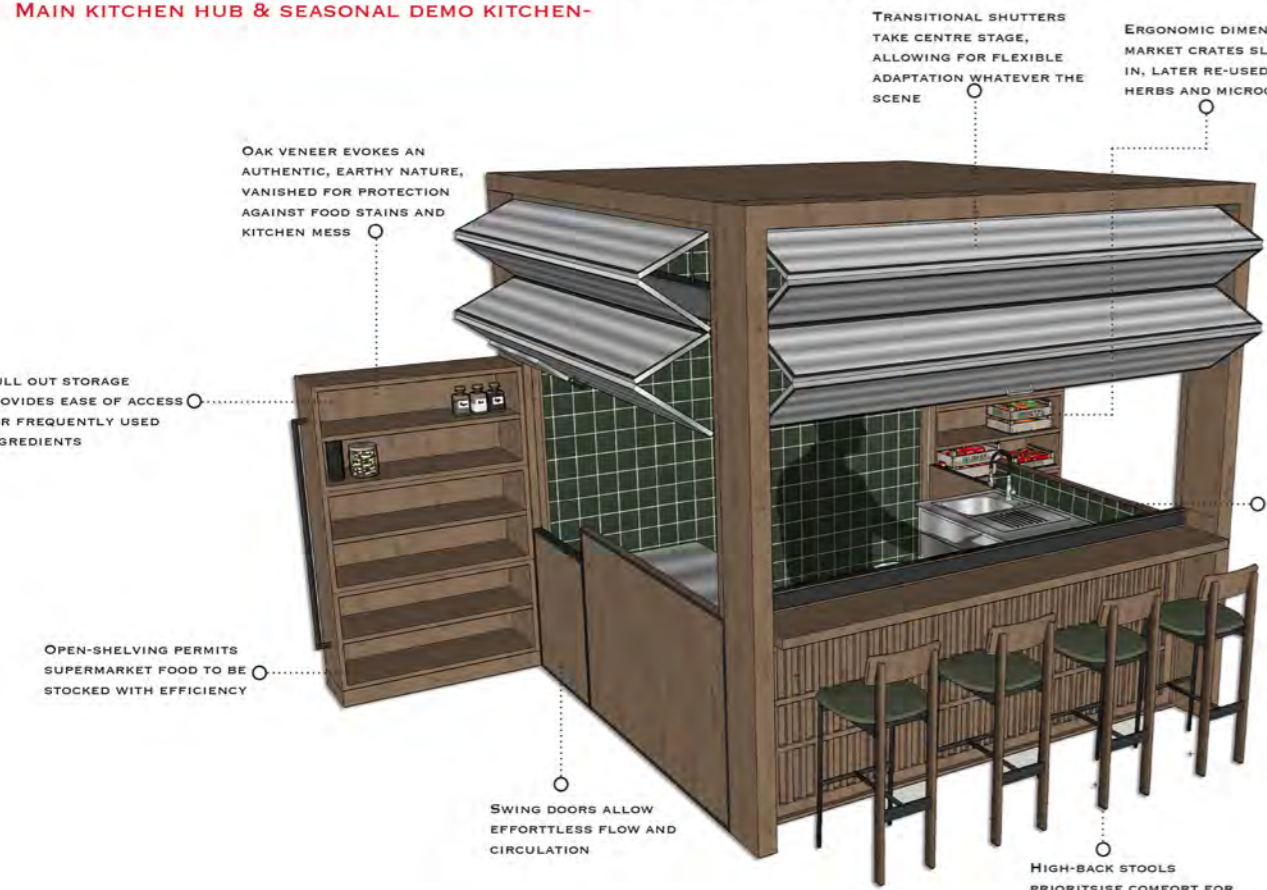
COLLECTIVE POSEUR TABLE
HOUSED IN AN EXISTING ALCOVE AN EXTENSIVE POSEUR TABLE PROVIDES A MOMENT OF REST WHEN FOOD IS RECEIVED. DUE TO ITS WALL-FACING NATURE A MIRROR FOLLOWS THE ALCOVE SHAPE ABOVE THE TABLE, A VIEW OF COOKING PROCESSES IS HAPPILY OBTAINED.

KITCHEN HUB INTERIOR
WITH A COMMERCIAL KITCHEN STANDARD TO BE UPHOLD MATERIALITY IS LARGELY STAINLESS STEEL. A CENTRED COOKER LOOKS OVER BAR SEATING, CHEFS AND CUSTOMERS RESIDE FACE TO FACE. DUE TO PROPOSED ONE-POT VEGGIE MEAL MENUS A SMALL SINK IS ALL THAT IS REQUIRED, AS WELL AS A HIDDEN UNDER THE COUNTER FRIDGE.

MAIN KITCHEN HUB
UNLIKE ITS MAIN SITE, COUNTERPART, THE POP-UP SITE LOOKS ITS TRANSITIONAL NATURE AS TO MAKE WAY FOR ADEQUATE FLOW AND CIRCULATION. AS TO MAKE BUILDING A WALK IN THE PARK MAJORITY OF INTERIOR COMPONENTS ARE EITHER FLAT PACK OR RE-USABLE IN THE MAIN SITE.

DARK ROOM POINT OF ENTRY
SEEN FROM INSIDE THE BACK ROOM A VIEW OF THE FRONT FACADE IS RETAINED. UPON ENTRY CUSTOMERS ARE DRAWN FORWARDS TOWARDS THE SINGULAR THRESHOLD, WITH THE INTENT TO EXPLORE AND DISCOVER, A SENSE OF CURIOSITY PLAYS ALONGSIDE THE INTERIOR'S ATMOSPHERIC MOOD.

RETAIL COLLABORATION/ COMMUNITY RESTAURANT COMPONENT MATERIALITY & FURNITURE SPECIFICATIONS-
MAIN KITCHEN HUB & SEASONAL DEMO KITCHEN-



**MAIN KITCHEN HUB FURNITURE SPECIFICATIONS-
 BAR STOOLS-**

Herman Miller

ON THE EXTERIOR THE MAIN KITCHEN HUB EMITS AN AUTHENTIC STYLE AURA, FREQUENTED SURFACES CLAD IN EUROPEAN SOURCED OAK VENEER, SHINING UNDER WARM WHITE GLOW CENTRED OVERHEAD. AREAS LESS LIKELY TO SUFFER DAMAGE FEATURE ROUGH SAWN OAK PANELS, TEXTURE AT THE FOREFRONT GUESTS ARE IN TOUCH WITH MORE THAN ONE SENSE AT ANY ONE TIME; FORGING A GENUINE CONNECTION TO THE OUTDOORS. ENTERING FROM THE SIDE STAFF AND COMMUNITY CHEFS ARE GREETED WITH NECESSITIES ALL STRATEGICALLY POSITIONED WITHIN ARMS REACH, IDEAL FOR SUCCESS IN THROUGHOUT THE DAY SERVICE. INTERIOR APPLIANCES GATHER, SHARING CONTINUITY IN EASY TO CLEAN STAINLESS STEEL, POWDER COATED FIXTURES ADORN THEIR SURFACE. PANELLING CLADDING ON THE FACADE LEADS THE CHARGE, SURROUNDED BY A GAGGLE OF CLOSE-KNIT BAR HEIGHT STOOLS. GUESTS ARE PUT AT EASE, GESTURED TO TAKE A SEAT, WARM PALETTES THRIVE AGAINST DARK CEILINGS AND FLOORS; HINTS OF EARTHY GREEN PROVIDE SECURITY AND BELONGING WHILST AN OPEN KITCHEN-DINING EXPERIENCE ALLOWS INCLUSIVITY TO PLAY ON THE MIND. AS THE SEASONS CHANGE EVENTS ARE ENCOURAGED (STOOLS ALLOW FOR A DEMO KITCHEN POP-UP), AIMED AT EDUCATING THOSE ON BOARD ABOUT SUSTAINABLE FOOD AND PEOPLE POWERED CHANGE.

ITEM NAME- BETWIXT BAR HEIGHT STOOL
LOCATION- MAIN KITCHEN HUB
SUPPLIER- HERMAN MILLER
MATERIALITY & SUPPLIERS- POWDER COATED FRONT FRAME, EUROPEAN OAK BACK FRAME, PAINTED SEAT IN VALSPAR HYDE PARK



RETAIL COLLABORATION/ COMMUNITY RESTAURANT MAIN MATERIAL OVERVIEW & POINT OF ENTRY-
**GROUND FLOOR PLAN-
 FEATURED SITE| ISLINGTON SQUARE**

SELECTED FOR ITS NATURAL APPEARANCE AND EASY TO CLEAN NATURE POLISHED CONCRETE FLOORS BOTH THE GROUND AND FIRST FLOOR WALKWAYS. GREYS/SCALE HUES BATTLE FOR RECOGNITION, COMPLEMENTING THE ORGANIC FINISH OF THE CEMENT CLAD WALLS.

ADDITIONAL BENEFITS SURROUND ITS REDUCED SLIP- RESISTANCE AND LIMITED MAINTENANCE, IDEAL FOR AN OPEN- AIR SHOPPING CENTRE AND FREQUENT VISITS FROM VARIOUS CUSTOMERS WITH DIFFERENT AGENDAS. AS A RESULT OF ITS COMPACT STRUCTURE STAINS ARE LIMITED, A NECESSITY IN ANY HOSPITALITY INTERIOR.

POLISHED CONCRETE FLOORING

ALUMINIUM SHUTTERS

SILVER IN SHADE ALUMINIUM SHUTTERS PROTRUDE FROM THE MAIN HUB'S OPEN SIDES. SELECTED AS A LIGHTWEIGHT ALTERNATIVE TO GALVANISED STEEL, ALUMINIUM ALLOWS EFFORTLESS OPERATION WITHOUT COMPROMISING DURABILITY. TO OPERATE A HANDLE IS POSITIONED ON THE FRONT FACE OF EACH SHUTTER GROUP AND AN INTERIOR FIXED STRAP ENSURES OUT OF REACH AREAS ARE FUNCTIONAL.

RAW AUTHENTICITY MEETS MAN-MADE MATERIALITY

NATURAL TEXTURE FORGES A GREATER CONNECTION TO THE OUTDOORS



EUROPEAN OAK LIMITS CARBON FOOTPRINT



ORGANIC SHADES ARE AUTHENTIC AND RAW

POLYSAFE SAFETY FLOORING

INCLUSIVITY IS SOLIDIFIED THROUGH INCORPORATION OF DDA STANDARD TOILETS. FLOORING MATERIALITY IS CAREFULLY SELECTED TO ENSURE CLIENT SAFETY AND DURABILITY. ALTHOUGH LESS GENUINE IN QUALITY, A VITAL NON-NEGOTIABLE FEATURE.



AREAS OF INTEREST ARE CARVED BY OAK VENEER, SOUGHT OUT FOR ITS COST-EFFECTIVE NATURE, IT HAS BECOME A COMMON CHOICE FOR MANY AN INTERIOR. DUE TO SOLID OAKS PRICE POINT AND WEIGHT, VENEER OFFERS A CARBON COPY ALTERNATIVE, IDEAL FOR ANY FREQUENTED SURFACE. IN THIS CASE THE COLLECTIVE RITUAL DINING TABLE, BAR AND SLIDE OUT STORAGE FEATURE AS SUCH; IN NEED OF SOLIDIFIED DURABILITY. ADDITIONAL TO OAK VENEER CERTAIN SURFACES FEATURE ROUGH SAWN OAK LEFT IN ITS RAW, AUTHENTIC STATE, FOR A GLIMPSE INTO THE WILD OUTDOORS.

ROUGH SAWN OAK & OAK VENEER

ECO CEMENT WALLS

CHOSEN FOR ITS LOW CARBON FOOTPRINT AND RAW TEXTURED APPEARANCE, ECO CEMENT IS A SUSTAINABLE ALTERNATIVE TO ITS TRADITIONAL COUNTERPART. LINING THE MAJORITY OF THE DOUBLE HEIGHT WALLS, ITS APPEARANCE IS DELIBERATELY EARTHY IN SHADE, TEAMING UP WITH THE DARK HUES OF POLISHED CONCRETE FLOORING THE FLOORS.

UPON ENTRY LIGHTING STRATEGY PREVAILS, A FOCUS ON COMMUNITY ATMOSPHERE AND CONVERSATION IS ATTAINED.

ANCHORED BY AN OFFSET FRAMEWORK THAT PROTRUDES INTO THE EXTERIOR WALKWAY, INTRIGUE IS ATTAINED UPON APPROACH. AT ITS CENTRE A PIVOTING DOORWAY ALIGNS PARALLEL WHEN OPEN, GUESTS ENTER ON EITHER SIDE. DUE TO ITS LARGE PRESENCE EXIT IS ALSO THROUGH THE SAME POINT. ITS PIVOTING NATURE A STATE OF TRANSITION BETWEEN INTERIOR AND EXTERIOR ENVIRONMENTS.

INTRIGUE IS MANIFESTED THROUGH A DIMLY LIT ATMOSPHERE, TRICKING THEIR MIND INTO A STATE OF CURIOSITY, ONCE CLOSED PASSERS-BY ARE NONE THE WISER TO WHAT LIES INSIDE; SEEING THEM RETURN AT A LATER DATE.

POINT OF ENTRY & PASSERY-BY INTRIGUE

RETAIL IDENTIFICATION IS RECOGNISED THROUGH NITE 3D LOGO SET ATOP THE EXTRUDED THRESHOLD

STAINLESS STEEL COATED THRESHOLD

DARING HUES SPEAK OF THE RETAIL'S PRIMARY CUSTOMER BASIS AND THEIR INTREPID CHALLENGES

OVERALL STRUCTURE & SHAPE

GLASS ACCENTS ALLOW A VIEW OPEN KITCHEN-DINING EXPERIENCE.

WITH ITS INTENTION TO CELEBRATE INDIVIDUAL PASSION AND SUCCESS, INTERIOR COMPONENTS SIT ILLUMINATED AGAINST THE VASTLY CLOAKED INTERIOR; DRAWING IN GUESTS WHO STEP FOOT OVER THE THRESHOLD. SHADOW RIDDEN CORNERS STRATEGICALLY CONTRAST WITH PRIME AREAS OF INTEREST.

VISITORS ARE ENCOURAGED TO EXPLORE THE OPEN-PLAN INTERIOR, A GENTLE CONNECTION TO THE TERRAIN EXPLORED BY THE MAVERICKS IS FORGED.

INTERACTIVE ZONES COINCIDE WITH AREAS OF SHARED CONVERSATION, AIMING TO TEACH THOSE AROUND; SPARKING PEOPLE POWERED CHANGE. MAIN HUBS ARE CLASSIC IN STRUCTURE, OFFSET IN ANGLE, THEIR IRREGULAR POSITION ALIGNS WITH CHANGE.

TRANSITION IS ENSURED THROUGH ADAPTIVE PANELS AND SLIDE-OUT STORAGE, THAT SUIT ANY AGENDA.

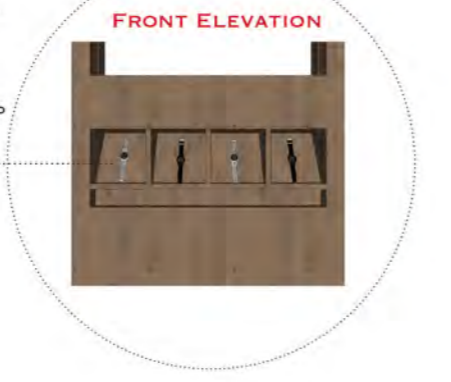
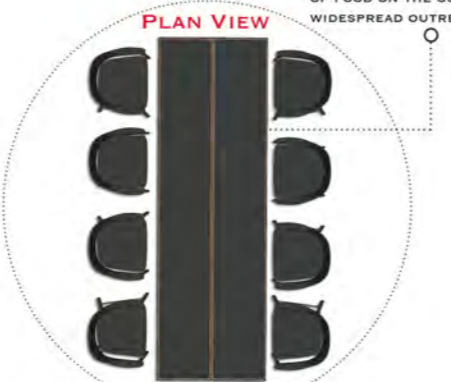
CONTINUITY IS RETAINED THROUGH OAK PANELLING, CREEPING UP EACH COMPONENTS FACADE, WHILST FIRST FLOOR ENDEAVOURS HANG ASYMMETRICALLY SUSPENDED IN TIME.

INTERIOR STRUCTURES ARE GEOMETRIC AND TRADITIONAL, YET AIM TO SHARE MORALS AND IDENTITY THROUGH A SENSE OF CLOSE-KNIT COMMUNITY CONVERSATION AND BELONGING.



NITE

RETAIL COLLABORATION/ COMMUNITY RESTAURANT COMPONENT MATERIALITY & FURNITURE SPECIFICATIONS-
COLLECTIVE RITUAL DINING & RETAIL DISPLAY-



SITUATED AT THE BACK IN A COSY CORNER, THE COLLECTIVE DINING TABLE STANDS PROUD. FORGED FROM OAK VENEER AND A GENEROUS COAT OF VALSPAR'S TEMPEST'S TEAPOT, THE TABLE IS ABLE TO HOUSE AN INTIMATE GROUP OF UP TO EIGHT; IDEAL FOR A TAKEAWAY STREET FOOD STYLE MENU. SOLELY LIT BY AN OVERHEAD STRIP PENDANT MADE UP OF POWDER COATED STEEL, A WARM SENSE OF UNITY AND BELONGING DRAWS THE EYE IN. THE INTENTION IS AS SUCH THAT DINERS COME TOGETHER TO SHARE MEALS AND CONVERSATION, FORMING ONE LARGE CLOSE-KNIT COMMUNITY NETWORK, THAT ADDRESSES SHARED INTERESTS IN FUTURE GENERATIONS SUCCESS AND SUSTAINABLE COOKING. BOUNDARIES ARE A THING OF THE PAST ONCE STEP FOOT PAST THE THRESHOLD, AN IDEOLOGY OF RESPECT AND TRUST IS FORMED.

WATCHES FORM A SIMPLISTIC ROW, SHOWCASING COLLECTION VARIANTS, FOCUS IS PRODUCT SPECIFIC WITH UNDER-SHELF LEDS DRAWING GUESTS IN

ADDITIONAL TRITIUM AND WATCH INTENTION IS SHOWCASED IN DARK ROOM HUB EXHIBITION, LOCATED ON THE FIRST FLOOR

STAINLESS STEEL WATCHES COINCIDE WITH OAK CONTINUITY RADIATING IMPORTANCE FROM THE GET GO, DISPLAYED ON WALL-LIKE STRUCTURES THAT HOUSE GEOMETRIC CUT-OUTS. LIGHTING IS INTENTIONAL ONLY ILLUMINATING NECESSITY. UPON ENTRY VISITORS SEE THE GROUND FLOOR DISPLAY PROTECTING THE OAK STAIRCASE, DEMANDING ATTENTION, AT NIGHT THE MOODY INTERIOR AMBIENCE ENSURES TRITIUM ACCENTS PREVAIL, DEMONSTRATING CLASSIC STYLE CHANGES. ERGONOMIC SLANTING ENSURES EYE LEVEL DISPLAYS ARE VISIBLE, BELOW INSET SHELVING PROVIDES A SPACE FOR PRODUCT DETAILS AND SPECIFICATIONS. CLIENTS WISHING TO MAKE A PURCHASE ARE ENCOURAGED TO SPEAK TO A REPRESENTATIVE WHERE PRODUCTS ARE SOLD THROUGH EMPLOYEE TABLETS DUE TO WATCH EXPENSE.

**COLLECTIVE DINING TABLE FURNITURE SPECIFICATIONS-
 CHAIR-**

**normann
 COPENHAGEN**

ITEM NAME- HERIT ARMCHAIR
LOCATION- COLLECTIVE DINING TABLE
SUPPLIER- NORMAN COPENHAGEN

MATERIALITY & SUPPLIERS- SOLID OAK FRAME, PAINTED BACK AND SEAT IN HARDWEARING PAINT, VALSPAR TEMPEST'S TEAPOT

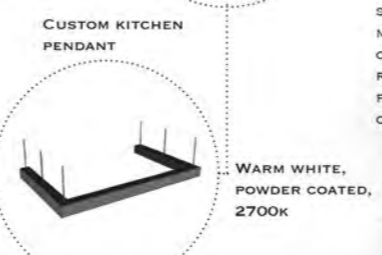
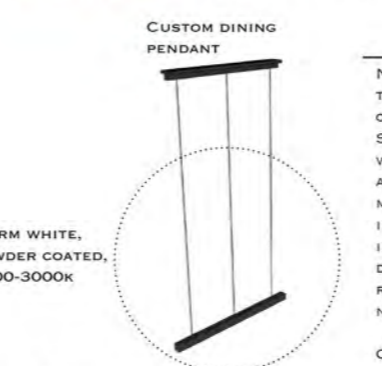
COLLECTIVE DINING VISUALISATION-



WATCH DISPLAY VISUALISATION-



RETAIL COLLABORATION/ COMMUNITY RESTAURANT LIGHTING OVERVIEW & INTERIOR AMBIENCE-
**FIRST FLOOR PLAN-
 FEATURED SITE| ISLINGTON SQUARE**



WARM WHITE, POWDER COATED, 2700-3000K

WARM WHITE, POWDER COATED, 2700K

WARM WHITE, POWDER COATED, 2700K

INTERIOR LIGHTING & OVERALL AMBIENCE

NO MATTER THE SEASON, NO MATTER THE TIME THE SPACE REMAINS CONSTANT IN ITS MOODY AMBIENCE. SHADY CORNERS CLING TO EACH WALL, VISUAL FOCUS SHIFTS TO EACH AREA OF INTEREST, HYPNOTISING THE MIND. HOSPITALITY ZONES APPEAR INTIMATE AND CONVIVIAL, ILLUMINATED BY WARM OVERHEAD DOWNLIT PENDANTS, WHILST AREAS OF RETAIL ENHANCE THE PRODUCTS NIGHTWEAR.

CONSIDERATION HAVE BEEN MADE FOR SEASONAL EVENTS WHERE LIGHTING MAY BE MORE SOUGHT AFTER, WITH ORIGINAL OVERHEAD SPOT-LIGHTS RETAINED, EMITTING A WARM GLOW FROM THE CEILING ABOVE, ALTHOUGH ONLY WORK UNDER OBLIGATION.

MAIN DINING & KITCHEN HUB LIGHTING

HANGING LOW OVER THE DINING TABLE TOP A SINGULAR CUSTOM PENDANT LIGHT ILLUMINATES THE DISHES SERVED. STRETCHING THE LENGTH OF THE TABLES EXPANSE IT ENSURES NOT ONE AREA FALLS SHY, GUESTS CAN ENJOY A STREET FOOD STYLE SERVICE WITH EASE, SEEMINGLY SUPER-CLUB ESQUE, APPRECIATING THE COLLABORATION OF INGREDIENTS SERVED AND FEEL INCLUDED IN GENUINE CONVERSATION MADE UP OF PASSIONATE INDIVIDUALS.

SIMILAR TO THAT OF THE DINING PENDANT A CUSTOM U-SHAPED PENDANT IS COUNTER CENTRED. PRACTICALLY AT THE FOREFRONT IT IS INTENTIONALLY DOWNLIT, SHADED FROM THE OUTSIDE BY THE MOUNTED SHUTTER ACCENTS.

NEON ACCENTS ACT AS BRANDING SEEMINGLY EXCITING IN A VASTLY AUTHENTIC INTERIOR

PRIMARILY UNLIT INTENTIONALLY TO REVEAL TRITIUM'S PROPERTIES, THE EXHIBITION HUB REMAINS DARK ALL YEAR ROUND. HOWEVER IMPLEMENTED AROUND AN OVERHEAD STEEL BEAM ARTEMIDE'S LA LINEA MARKS AN APPEARANCE, GLOWING A BRIGHT NEON GREEN IT EMULATES THE GLOW OF THE TRITIUM SHOWCASED.

FLEXIBLE PROPERTIES ALLOW THE LIGHT TO BE MANIPULATED TO ITS HEARTS CONTENT, OR REMOVED ENTIRELY FOR A TRULY DARK SPACE OF TRUST AND BELONGING.



LA LINEA, DESIGNER- ARTEMIDE

WARM WHITE LEDS, UNO

AREAS OF INTEREST ARE PRECISELY ILLUMINATED



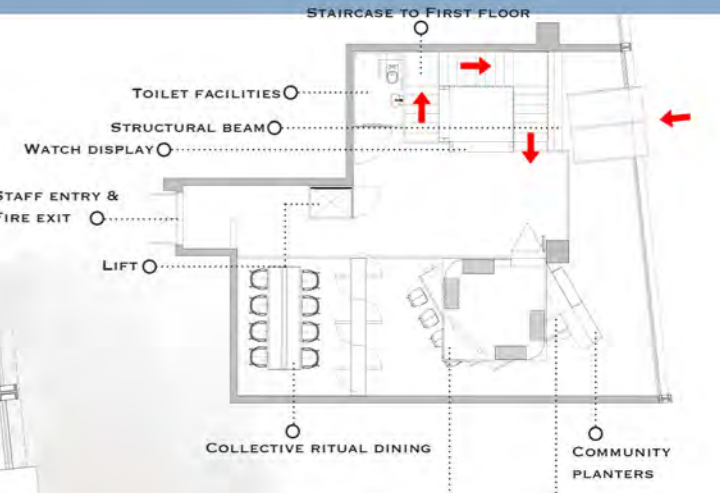
TRITIUM'S CLASSIC NEON GREEN EVOKES SECURITY AND WELL-BEING

DIRECTIONAL LEDS

TRAVELLING THE MAJORITY OF THE INTERIOR WHERE THE FLOOR AND WALL MEET, WARM WHITE LEDS ARE GUIDING AND DIRECTIONAL INCLUDED UP THE U-SHAPED STAIRCASE FOR INCREASED SAFETY AND ENSURING VISITORS ARE MADE AWARE OF THE UPPER FLOOR PRESENCE.

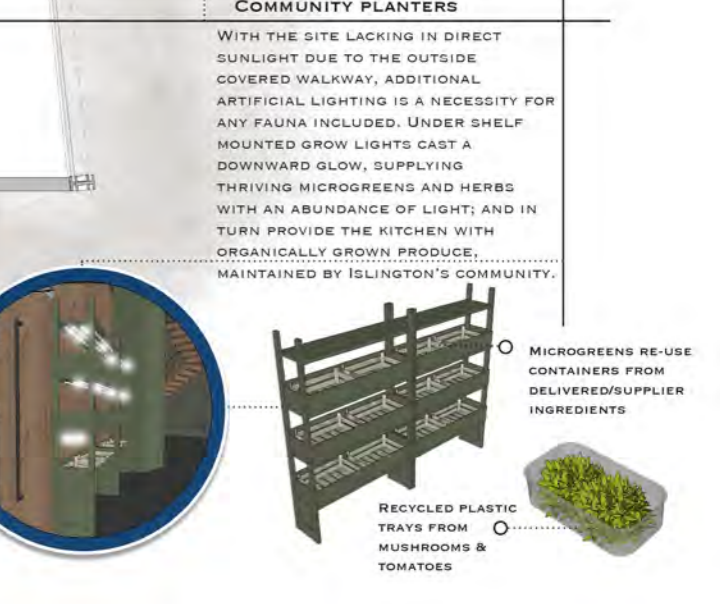


DARK ROOM HUB LIGHTING



COMMUNITY PLANTERS

WITH THE SITE LACKING IN DIRECT SUNLIGHT DUE TO THE OUTSIDE COVERED WALKWAY, ADDITIONAL ARTIFICIAL LIGHTING IS A NECESSITY FOR ANY FAUNA INCLUDED. UNDER SHELF MOUNTED GROW LIGHTS CAST A DOWNWARD GLOW, SUPPLYING THRIVING MICROGREENS AND HERBS WITH AN ABUNDANCE OF LIGHT; AND IN TURN PROVIDE THE KITCHEN WITH ORGANICALLY GROWN PRODUCE, MAINTAINED BY ISLINGTON'S COMMUNITY.



RECYCLED PLASTIC TRAYS FROM MUSHROOMS & TOMATOES

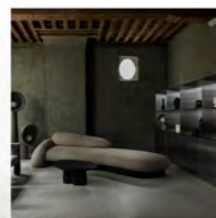
Stannah



PAINTED OFF-BLACK FOR COHESION AND AS TO NOT PREVAIL AS THE CENTRE OF ATTENTION

LIFT SPECIFICATIONS

SUPPLIED BY COMMERCIAL AND RESIDENTIAL LIFT DESIGNER STANNAH, LIFT INCLUSIVITY PROVIDES A SAFE AND HASSLE-FREE ENVIRONMENT THAT CATERES TO EACH AND EVERY INDIVIDUAL WHO ENTERS THROUGH THE THRESHOLD; VITAL WHEN INTENTIONS AIM TO FOCUS ON WIDESPREAD COMMUNITY OUTREACH.



FIRE RATED PAINT

ADORNING THE EXISTING CONCRETE COLUMN AND NEWLY IMPLEMENTED FIRST FLOOR SUPPORT BEAM, FIRE RATED PAINT COVERS EACH SURFACE. SELECTED TO ENSURE CUSTOMER SAFETY IN CASE OF AN EMERGENCY ITS PRIMARY PURPOSE LIMITS THE SPREAD OF FLAMES TO OTHER SURFACES AND PROTECTS THE SUPPORT I BEAM FROM TWISTING WHEN EXPOSED TO RAW FLAMES.

EARTHY SHADES CREATE A STRIKING CONTRAST TO THE AUTHENTIC OAK PANELING AND ECO CEMENT WALLS
 SHADE- EARTHY GREEN

SUGGESTED SUPPLIER- INTUMESCENT PAINTS

RE-DESIGNED THRESHOLD

IN ORDER TO PRIORITISE A DIMLY LIT, INTIMATE ATMOSPHERE ON THE INSIDE, A THRESHOLD RE-DESIGN ENSURES NATURAL LIGHT IS CONTROLLED. LEVEL WITH THE GROUND FLOOR A WOODEN CLAD FACADE IS VISIBLE UPON PASSING, PAINTED IN AN OFF BLACK SHADE. A VIEWING WINDOW AT EYE LEVEL PROVIDES PASSERS BY A GLIMPSE OF WHAT THE INTERIOR HOLDS AND AS NOT TO CAUSE DISCONNECT; WHILST A GLANCE UPWARDS SEES A CUBIC FORM SUSPENDED, PROVOKING IMMEDIATE INTRIGUE AND ADVERTISEMENT.

GLASS BALUSTRADE

POSITIONED AT THE EDGE OF THE FIRST-FLOOR MEZZANINE A GLASS BALUSTRADE NOT ONLY ACTS AS A SAFETY BARRIER, BUT A VIEWPOINT OF THE CHATTER BELOW, FOR ANY GUEST EXPLORING WHAT THE UPPER FLOOR HAS TO OFFER.



WITH A TIMELESS STRUCTURE AND VISUAL LANGUAGE, EMERALD GREEN TILES LINE FREQUENTED SURFACES INSIDE THE MAIN KITCHEN HUB. ALONGSIDE THE COMMERCIAL GRADE STAINLESS STEEL COUNTERS AND APPLIANCES, THEY PROVIDE A BREATH OF FRESH AIR AGAINST THE OTHERWISE MONOCHROMATIC COLOUR PALETTE.

ADDITIONAL BENEFITS SURROUND THEIR EASY TO CLEAN NATURE AND DURABLE OUTPUT.

TILE ACCENTS



TILE ACCENTS ADD A LIGHT-HEARTED CLASSIC NEIGHBOURHOOD AESTHETIC

OFF-BLACK SHADES ARE CLASSIC AND STATEMENT



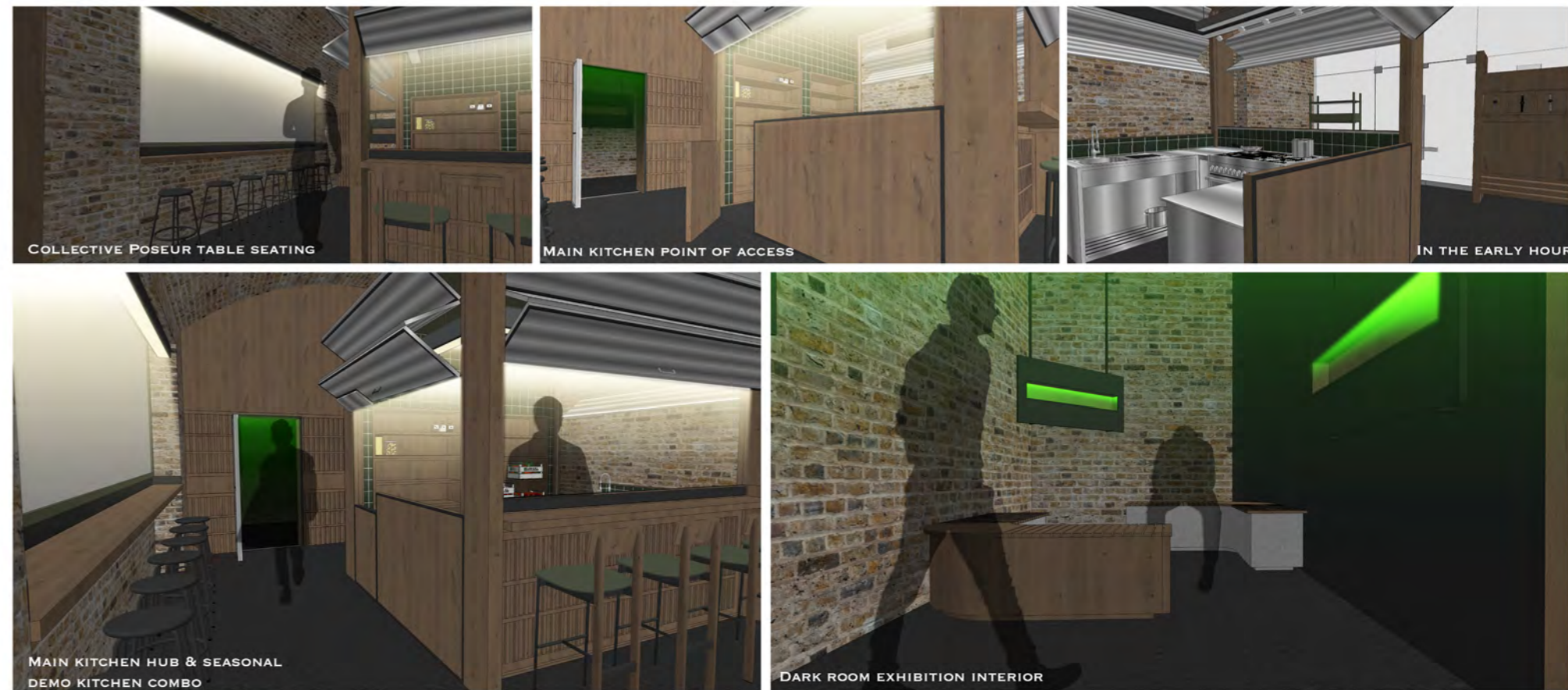
UPPER-FLOOR WINDOW ENSURES THE OUTSIDE WORLD STAYS AT ARMS REACH



POP-UP INTERIOR MATERIALITY AND ATMOSPHERE OVERVIEW- SECTIONAL VIEWS REVEAL EXPLORATION IS A NECESSITY, WITH INTERACTIVE SPACES ONLY REVEALED TOWARDS THE BACK. VISITORS INTERESTED IN THE SCIENCE BEHIND TRITIUM'S GRASP ON CLASSIC STYLE WATCHES, STEP FOOT INTO AN EXHIBITION STYLE ROOM THAT GLOWS WITH CURIOSITY. UNLIKE THE MAIN SITE MULTIPLE DISPLAYS STAND PROUD ACTING AS AN INFORMATIVE ADVERTISEMENT FOR WHAT TO EXPECT, WHILST WATCH DISPLAY CASES LINE THE FRONT WINDOW FOR CATCHING OF THE EYE. AUTHENTIC MATERIALITY MEETS A CONTEMPORARY CLOSE-KNIT COMMUNITY NETWORK STRIVING FOR INCLUSIVITY AND PEOPLE POWERED CHANGE.



INTENTION THROUGH INTERIOR- SEEN IN VARIOUS ANGLES, GUESTS EXPERIENCE A DARK, CLOAKED INTERIOR UPON ENTRY. GEOMETRIC STRUCTURES FORM A COLLECTIVE, EACH WITH THEIR OWN AGENDA; THEIR IDENTITY DICTATED BY WARM LIGHTING HUES. VISITORS OBTAIN A SENSE OF GENUINE AUTHENTICITY THROUGH CLOSE-KNIT EXPERIENCES AND CONVERSATION THAT PROMOTE EASE AND EVOKE BELONGING.



INTENTION THROUGH INTERIOR- WITH CONTINUITY A GIVEN , THE POP-UP SITE LOCATED AT COAL DROPS YARD SHARES SIMILAR VALUES. ALTHOUGH LIGHTER IN AMBIENCE THAN THE MAIN SITE DUE TO ITS POP-UP NATURE AND RETAINED THRESHOLD, GUESTS CAN ENJOY GENUINE CONVERSATION OVER A HEARTY MEAL. POSEUR STYLE DINING SETS THE SCENE FOR WHAT IS TO COME THREE MONTHS DOWN THE LINE, WHILST AT THE BACK ADDITIONAL EXHIBITION CASES PROVIDE A STRATEGIC MARKETING SCHEME OF REMEMBRANCE AND ENTICEMENT.



FEATURED SITE | COAL DROPS YARD

