



HER HAVEN | 354

CLIENTS:



PROJECT INTRODUCTION

THE AIM OF THIS PROJECT IS TO CREATE A TRANSFORMATIVE, INCLUSIVE SPACE THAT SUPPORTS WOMEN FROM DIVERSE BACKGROUNDS WHO HAVE EXPERIENCED TRAUMA, GUIDING THEM THROUGH A JOURNEY OF HEALING, EMPOWERMENT, AND RESILIENCE. BY REPURPOSING SHIPPING CONTAINERS AS THE PRIMARY ARCHITECTURAL ELEMENT, THE DESIGN SYMBOLISES NOT ONLY THE STRENGTH, ADAPTABILITY, AND TRANSFORMATION THAT WOMEN UNDERGO BUT ALSO ADDRESSES ISSUES OF SUSTAINABILITY AND EQUITABLE RESOURCE USE. THIS PROJECT ASPIRES TO PROVIDE NOT JUST A SHELTER, BUT A NURTURING AND DIGNIFIED ENVIRONMENT THAT RECOGNISES THE FUNDAMENTAL HUMAN RIGHT TO SAFETY, RESPECT, AND AUTONOMY. IT SEEKS TO EMPOWER WOMEN TO REBUILD THEIR CONFIDENCE, RECLAIM THEIR AGENCY, AND EMERGE AS RESILIENT INDIVIDUALS, READY TO REINTEGRATE INTO SOCIETY AS VALUED AND RESPECTED MEMBERS OF THE WESTMINSTER COMMUNITY. THE DESIGN INCORPORATES TRAUMA-INFORMED PRINCIPLES, CULTURALLY SENSITIVE SPACES, AND INCLUSIVE AMENITIES TO ENSURE THAT ALL WOMEN, REGARDLESS OF THEIR BACKGROUND, ETHNICITY, ABILITY, OR CIRCUMSTANCE FEEL WELCOMED, SUPPORTED, AND HEARD. ALIGNED WITH WESTMINSTER’S VISION FOR A GREENER, SMARTER, AND MORE CONNECTED FUTURE, THIS PROJECT CREATES SPACES WHERE INCLUSIVITY AND EMPOWERMENT TAKE ROOT.

CONCEPT: CONTAINERS OF CHANGE: EMPOWERING HEALING TO RESILIENCE

THIS PROJECT IS A TRANSFORMATIVE JOURNEY, GUIDING WOMEN FROM EMPOWERMENT TO RESILIENCE. IT OFFERS A HOLISTIC APPROACH TO RECOVERY, SUPPORTING EMOTIONAL HEALING, LEGAL ADVOCACY, AND PHYSICAL STRENGTH-BUILDING. THE JOURNEY BEGINS WITH SAFETY AND RETREAT, THEN MOVES TOWARDS REGAINING CONTROL—FIRST EMOTIONALLY AND MENTALLY THROUGH COUNSELLING AND LEGAL SUPPORT, AND LATER PHYSICALLY THROUGH SELF-DEFENCE AND TRAINING. THE FINAL STAGE FOCUSES ON REINTEGRATION, WHERE WOMEN EMERGE STRONGER AND MORE CONFIDENT. REPURPOSED SHIPPING CONTAINERS PLAY A PIVOTAL ROLE IN REINFORCING THIS TRANSFORMATION. TRADITIONALLY SYMBOLS OF CONFINEMENT, THEY SERVE AS A THRESHOLD BETWEEN CRISIS AND EMPOWERMENT. THEIR INDUSTRIAL, RIGID EXTERIORS CONTRAST WITH THE FLEXIBLE, NURTURING INTERIORS, REFLECTING THE JOURNEY FROM VULNERABILITY TO STRENGTH. THE TOUGHNESS OF THE CONTAINERS REPRESENTS THE RESILIENCE WOMEN DEVELOP, WHILE THEIR INTERIORS—DESIGNED FOR HEALING AND EMPOWERMENT—SYMBOLISE THE TRANSFORMATIVE PROCESS WITHIN. THE DESIGN EMPHASISES CONTROLLED CHOICE, EMPOWERING WOMEN TO NAVIGATE THEIR OWN PATH TO HEALING AT THEIR OWN PACE. THIS SPACE IS MORE THAN JUST A BUILDING; IT’S A JOURNEY TOWARD RESILIENCE, AUTONOMY, AND RENEWED STRENGTH.



**THE SITE**

THE SITE IS A NEWLY CONSTRUCTED MIXED-USE BUILDING (2023) LOCATED AT 354 OXFORD STREET, REDEVELOPED TO ACCOMMODATE THE NEW BOND STREET STATION ENTRANCE AND ELIZABETH LINE IMPROVEMENTS. IT CURRENTLY HOUSES MANIERE DE VOIR’S FLAGSHIP RETAIL STORE AND A CAFÉ ON THE LOWER FLOORS, WITH RESIDENTIAL FLATS ABOVE. THE BUILDING’S CENTRAL LOCATION AND MODERN STRUCTURE MAKE IT AN ACCESSIBLE AND ADAPTABLE SPACE FOR RE-USE.

THE USERS

THIS SPACE IS DEDICATED TO WOMEN WHO HAVE EXPERIENCED TRAUMA, PROVIDING A SUPPORTIVE ENVIRONMENT FOR THEIR JOURNEY TOWARD HEALING, EMPOWERMENT, AND RESILIENCE. IT OFFERS SURVIVORS OF ABUSE, VIOLENCE, AND LIFE-ALTERING CHALLENGES THE TOOLS AND SPACE NEEDED TO RECLAIM CONTROL OVER THEIR LIVES WITH DIGNITY AND STRENGTH.

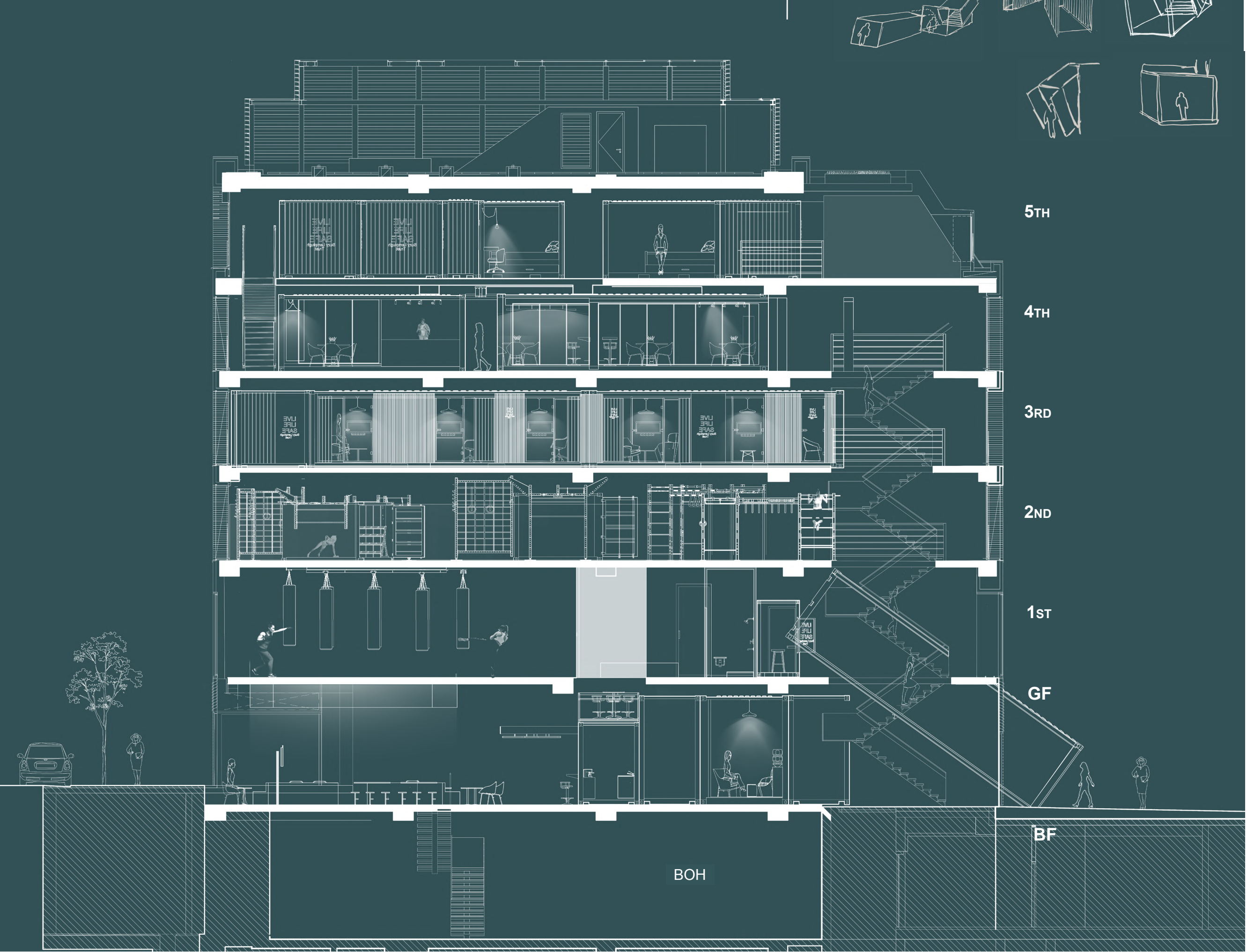
**GENERAL PUBLIC USING CAFÉ & AWARENESS PROGRAMS**  
PEOPLE VISITING THE CAFÉ AND ATTENDING PUBLIC TALKS ON SLP INITIATIVES PREVENTION.

**WOMEN SEEKING SAFETY & RECOVERY**  
VICTIMS OF STALKING, DOMESTIC ABUSE, HARASSMENT, OR ASSAULT. NEED IMMEDIATE REFUGE, OVERNIGHT STAY, AND LONG-TERM SUPPORT.

**WOMEN SEEKING MENTAL & EMOTIONAL SUPPORT AND WANT TO UNWIND**  
THOSE EXPERIENCING STRESS, ANXIETY, PTSD, OR TRAUMA. REQUIRE COUNSELING, THERAPY ROOMS, BEING EDUCATED.

**WOMEN ATTENDING SELF-DEFENSE & EMPOWERMENT CLASSES**  
INDIVIDUALS WHO WANT TO BUILD CONFIDENCE AND LEARN PROTECTIVE SKILLS. WILL ENGAGE WITH GYM, MARTIAL ARTS, AND SELF-DEFENSE PROGRAMS.

**WOMEN SEEKING LEGAL SUPPORT & ADVOCACY**  
NEED ADVICE, CASE MANAGEMENT, & LEGAL ASSISTANCE. ENGAGING WITH SUZY LAMPLUGH TRUST, CONSULTATIONS, AND WORKSHOPS.





BRANDING:

PEOPLESAFE APP

At Her Haven 354, the safety and security of all clients is a top priority. SuzyLamplugh Trust and Women's Self Defence UK have partnered with Peoplesafe to provide enhanced protection. Every client will receive an ID badge featuring their name, ID number, and a QR code. The QR code grants access to secure areas through tap-in card readers on all doors and links to the e-learning platform, offering resources on self-defense, wellness, and support from both SuzyLamplugh Trust and Women's Self Defence UK. Clients are required to download an app provided by SuzyLamplugh Trust and Women's Self Defence UK, and also register on the Peoplesafe Personal Safety App. This app includes a panic alarm feature for immediate alerts in case of danger and allows clients to book workshops, classes, study pods, gym sessions, and more. This ensures a seamless, secure, and empowering experience for all clients at Her Haven 354.



ALL THE CONTAINERS IN MY SPACE ARE BRANDED WITH BOTH THE WOMEN'S SELF-DEFENCE UK AND SUZY LAMPLUGH TRUST LOGOS. THESE CONTAINERS ARE TRANSFERABLE AND CAN BE RECONFIGURED TO BE PLACED ANYWHERE, BASED ON THEIR STRENGTH, STACKABLE FORM, AND DESIGN. THEY ARE NORMALISED, ADAPTABLE, AND EASY TO SET UP, MAKING THEM VERSATILE FOR ANY LOCATION. THIS DESIGN APPROACH NOT ONLY ENHANCES FUNCTIONALITY BUT ALSO CONVEYS A SENSE OF POSITIVITY, REINFORCING THE SPACE'S MISSION OF SAFETY AND EMPOWERMENT.

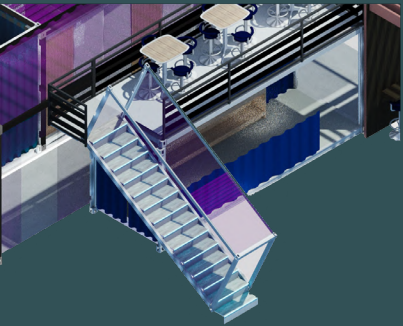
PROPOSED FACADE



MULTIPLE ENTRANCE TO THE SITE OR DIFFERENT USERS REQUIREMENTS



**12-Hour Open Entrance**  
A WELCOMING, OPEN ENTRY FOR USERS READY TO ENGAGE WITH THE SPACE OR COMMUNITY, ALLOWING THEM TO GRADUALLY EASE INTO COMMUNAL AREAS LIKE GROUP THERAPY OR WORKSHOPS AT THEIR OWN PACE. THIS ENTRANCE IS ACCESSIBLE TO ANYONE.



A DOUBLE-HEIGHT CONTAINER CAFÉ FUNCTIONS DISCREETLY AS AN ENTRANCE TO THE "SAFETY ZONE." WOMEN OR GIRLS IN DANGER CAN USE IT AS A SECURE ESCAPE ROUTE BY POSING AS CUSTOMERS AND ORDERING A DRINK.



STAFF ENTRANCE TO GO TO THE BOH STAIRCASE



**24-Hour Discrete Entrance Based on Emotional State**  
A DEDICATED, SECURE ENTRANCE INSPIRED BY SUZY LAMPLUGH (SLP) COLORS, DESIGNED FOR WOMEN IN URGENT NEED OF PROTECTION. OFFERING IMMEDIATE ACCESS TO A DESIGNATED SAFE ZONE, THIS DISCREET ENTRANCE IS LOCATED ON THE STRATFORD PLACE SIDE, AWAY FROM PUBLIC VIEW, NOISE, AND TRAFFIC, ENSURING A SENSE OF CARE AND SECURITY WITHOUT DELAY.



**24-Hour Safe Public Entrance**  
A PUBLIC, YET SECURE ENTRANCE DESIGNED FOR INDIVIDUALS WHO MAY FEEL VULNERABLE AND NEED IMMEDIATE PROTECTION. THIS WELL-SECURED ENTRY LEADS DIRECTLY TO THE SAFE ZONE, ENSURING SAFETY AND PEACE OF MIND.

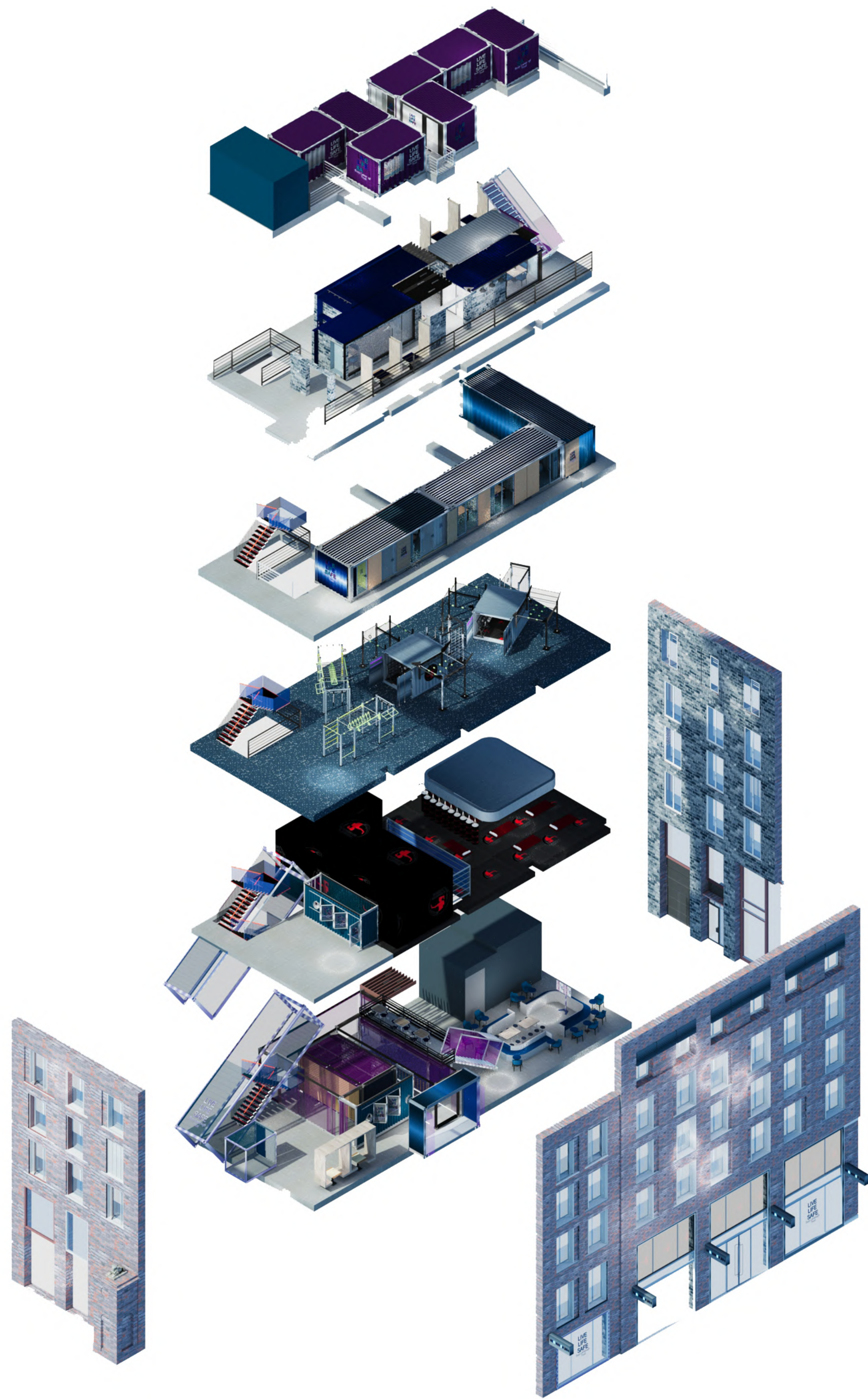
RETAINED FACADE

IN MY DESIGN, I HAVE CHOSEN TO RETAIN THE MAJORITY OF THE EXISTING FACADE TO PROMOTE SUSTAINABILITY. AS THE BUILDING IS NEWLY CONSTRUCTED, DEMOLISHING A FUNCTIONAL STRUCTURE WOULD BE WASTEFUL. BY PRESERVING THE CURRENT FACADE, I AM MINIMISING ENVIRONMENTAL IMPACT WHILE MAINTAINING THE BUILDING'S STRUCTURAL INTEGRITY AND THE EXISTING BRICK IS MAINTAINED. I HAVE KEPT THE EXISTING WINDOWS IN POWDER COATED AEGEAN TEAL METAL FRAMES A COLOUR THAT ALIGNS WITH SUZYLAMPLUGH'S BRAND AND SYMBOLISES SAFETY AND EMPOWERMENT.

TO REINFORCE THE MISSION OF THE SPACE, I'VE INCORPORATED THE NAME "HER HAVEN 354" IN BOLD 3D SIGNAGE, USING SUZYLAMPLUGH'S LOGO COLOURS. THE SIGNAGE IS POSITIONED ON THE CORNER OF THE BUILDING AND ABOVE EACH WINDOW, ENSURING IT'S VISIBLE FROM MULTIPLE ANGLES AND DISTANCES. THIS STRATEGIC PLACEMENT MAKES THE CENTRE EASY TO IDENTIFY AND ACCESSIBLE FROM AFAR, OFFERING COMFORT AND VISIBILITY FOR THOSE SEEKING REFUGE.



OVERALL SCHEME:



5TH FLOOR (SAFE HAVEN & RE-CHARGE) → IMMEDIATE REFUGE & RECOVERY

4TH FLOOR PLAN

3RD FLOOR → REGAINING CONTROL (EMOTIONAL & LEGAL EMPOWERMENT)

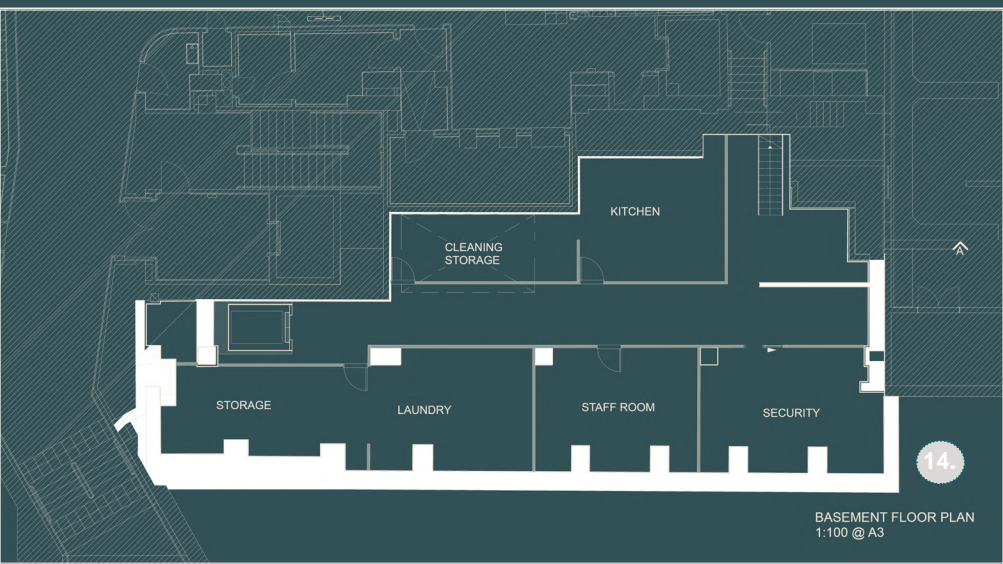
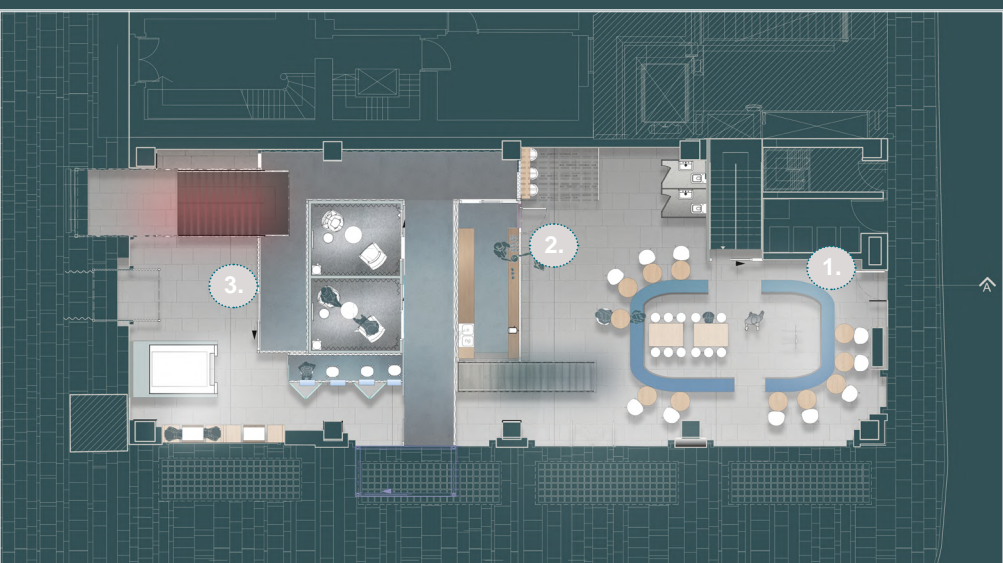
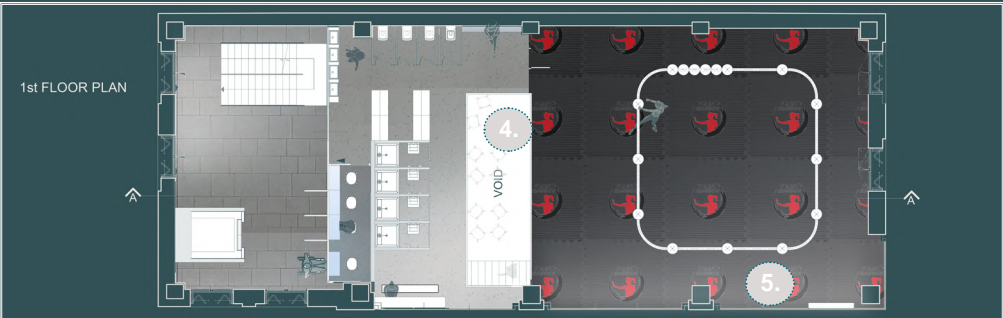
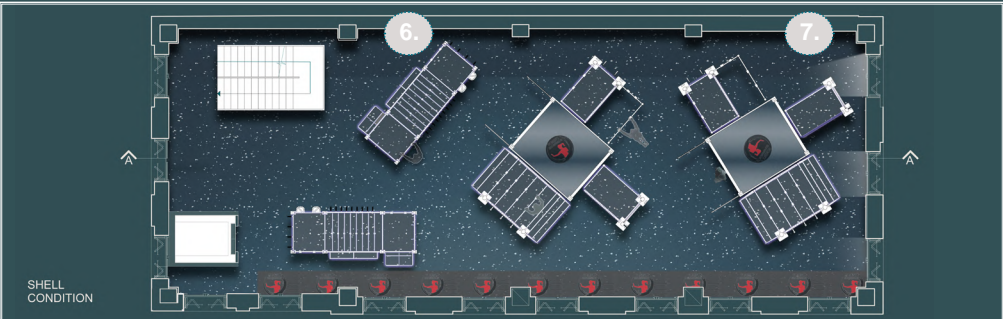
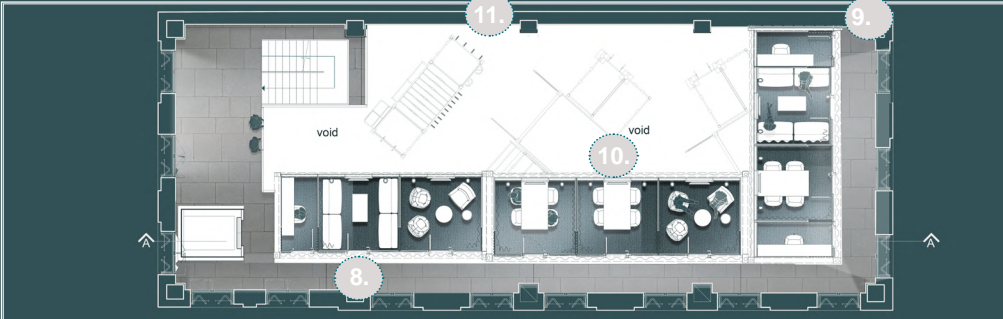
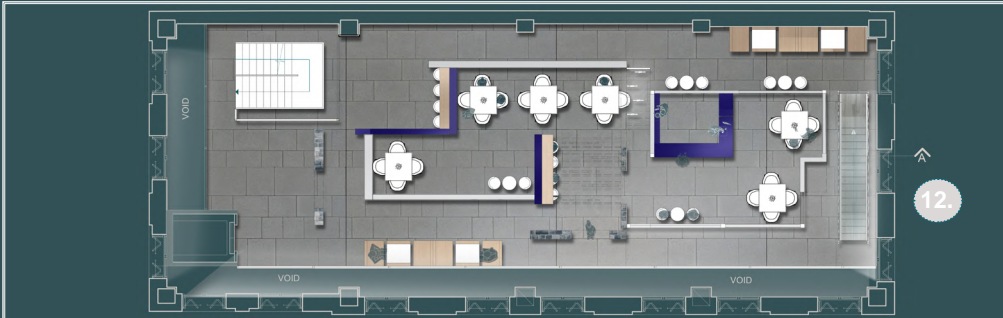
2ND FLOOR PLAN

2ND / 1ST FLOOR (EMPOWERMENT & STRENGTH) → BUILDING RESILIENCE & PREPAREDNESS

1ST FLOOR PLAN

GROUND FLOOR (COMMUNITY HUB & CAFÉ) → REINTEGRATION & NEW BEGINNINGS

BASEMENT FLOOR PLAN (BoH)



INSTALLATION OF CONTAINERS WITHIN THE EXISTING BUILDING

14. BACK OF HOUSE (BoH)

THE BASEMENT FLOOR IS DEDICATED TO HOTEL MAINTENANCE AND BACK-OF-HOUSE (BoH) OPERATIONS, INCLUDING SECURITY, STORAGE, LAUNDRY, AND STAFF ROOMS.

13. LIVING CONTAINERS

LOCATED ABOVE THE 4TH FLOOR, THE SLEEPING CONTAINERS FORM A DOUBLE-HEIGHT STRUCTURE, EACH OFFERING A ‘WINDOW-LIKE VIEW’ TO THE OUTSIDE FOR AN OPEN, AIRY FEEL. FULLY EQUIPPED WITH ALL THE ESSENTIALS, THEY PROVIDE A COMFORTABLE STAY FOR USERS.

12. EXCLUSIVE COMMUNAL DINING/MEETING

THIS FLOOR, ACCESSIBLE ONLY TO ENROLLED INDIVIDUALS, FEATURES A COMMUNAL DINING AND MEETING SPACE WITH A RELAXED, CASUAL ATMOSPHERE. IT SERVES MULTIPLE FUNCTIONS: A PLACE TO EAT, MEET WITH LAWYERS OR COUNSELORS, STUDY, AND UNWIND BETWEEN GYM SESSIONS. DESIGNED WITH NATURAL LIGHT, OPEN SPACES, AND VARIED SEATING OPTIONS, IT OFFERS A COMFORTABLE, VERSATILE ENVIRONMENT FOR USERS.

11. THIRD-FLOOR VOID & GYM INTEGRATION

A LARGE VOID ON THE THIRD FLOOR ENHANCES THE OPEN, IMMERSIVE EXPERIENCE WHILE ALLOWING THE SECOND-FLOOR GYM TO EFFECTIVELY UTILIZE THE VERTICAL SPACE.

10. CONTAINER POD 1 : FORMAL & EDUCATIONAL SPACE

IS A FORMAL, MULTI-USE SPACE FOR PRIVATE OR GROUP THERAPY, COUNSELLING, LEGAL MEETINGS, AND EDUCATIONAL SESSIONS. IT ALSO HOSTS SUZY LAMPLUGH’S OFFICE AND SMALL CLASSES FOCUSED ON WOMEN’S RIGHTS AND PERSONAL SAFETY.

9. CONTAINER POD 2: PRIVATE REFLECTION & DEVELOPMENT

IS A PRIVATE SPACE FOR ONE-ON-ONE USE, WHERE USERS CAN REFLECT, STUDY COURSES FROM SUZY LAMPLUGH AND WOMEN’S SELF-DEFENCE, OR ENGAGE IN PERSONAL DEVELOPMENT. IT ALSO SERVES AS A SETTING FOR PRIVATE LEGAL CONSULTATIONS.

8. CONTAINER POD 3: INFORMAL COMMUNAL MEETING & THERAPY SPACE

SERVES AS A VERSATILE COMMUNAL AREA FOR INFORMAL MEETINGS, GROUP OR PRIVATE THERAPY, AND COUNSELLING. IT ALSO OFFERS A SPACE FOR ONE-ON-ONE LEGAL CONSULTATIONS.

7. EMPOWERING FITNESS CONTAINERS FOR WOMEN

THESE VERSATILE GYM CONTAINERS ARE PURPOSEFULLY DESIGNED TO SUPPORT WOMEN IN BUILDING STRENGTH AND RESILIENCE. OFFERING PRIVACY AND ADAPTABILITY, THEY PROVIDE A MODERN ALTERNATIVE TO TRADITIONAL GYMS—CREATING PERSONAL, EMPOWERING SPACES THAT FOSTER INDEPENDENCE AND SELF-GROWTH.

6. RIG FITNESS STATION

A VERSATILE TRAINING STRUCTURE SUPPORTING STRENGTH AND FUNCTIONAL WORKOUTS IN THE WOMEN’S SELF-DEFENCE ZONE. EQUIPPED WITH MULTIPLE PULL-UP BAR STYLES, GYMNASTICS RINGS, AND BELTS FOR DIVERSE EXERCISES.

5. MULTIFUNCTIONAL MARTIAL ARTS SPACE

PURPOSE-BUILT, SPACE-SAVING RIG SYSTEM FOR BOXING AND VERSATILE FUNCTIONAL WORKOUTS. DESIGNED FOR GYMS, FITNESS CLUBS, MARTIAL ARTS, SELF-DEFENSE, AND YOGA SPACES, IT SUPPORTS CEILING-MOUNTED PUNCH BAGS AND FLEXIBLE TRAINING ZONES. EASILY ADAPTABLE TO ANY LAYOUT, WITH STORAGE SOLUTIONS THAT KEEP BAGS OUT OF THE WAY WHEN NOT IN USE.

4. WOMENS CHANGING ROOMS

3. ARRIVAL & CHECK-IN SECURITY PROCESS

CLIENTS ENTER THROUGH A SECURE, CONTAINER-BASED LOBBY AND PROCEED DOWN A PROTECTED CORRIDOR TO CONSULTATION ROOMS. THERE, THEY RECEIVE FIRST AID, DISCUSS THEIR PROGRAM, AND ARE ISSUED AN ID GRANTING ACCESS TO SPECIFIC AREAS. THE SPACE IS DESIGNED FOR SAFETY, PRIVACY, AND EFFICIENT CHECK-IN BEFORE MOVING TO THE UPSTAIRS SAFE ZONE.

2. SECURITY CONTAINER CAFÉ

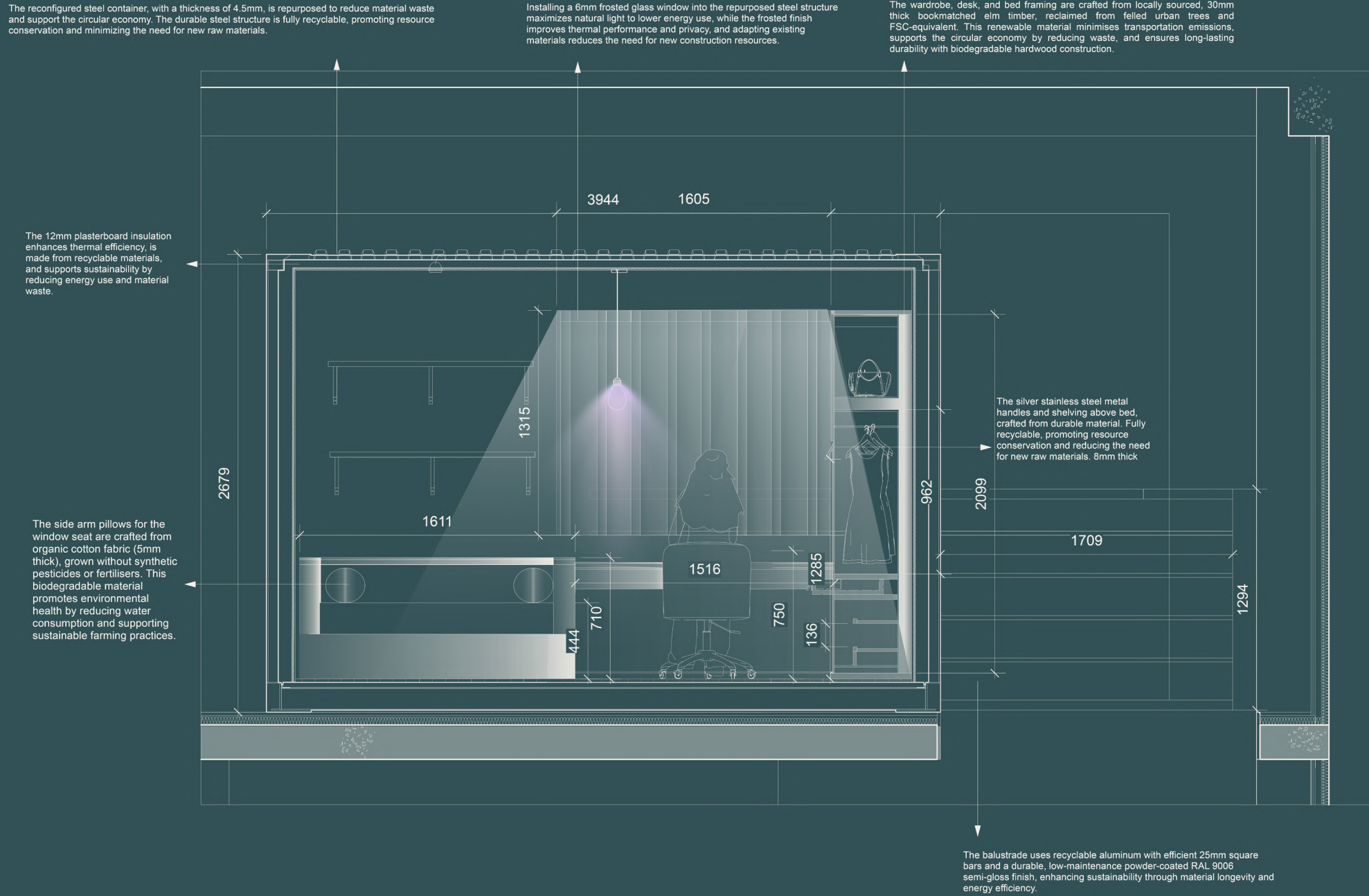
A DOUBLE-HEIGHT CONTAINER CAFÉ OFFERING HEALTHY FOOD OPTIONS, WHILE ALSO FUNCTIONING AS A DISCREET ENTRANCE TO THE “SAFETY ZONE.” WOMEN OR GIRLS IN DANGER CAN USE IT AS A SAFE ESCAPE ROUTE BY PRETENDING TO ORDER A DRINK.

1. COMMUNAL EDUCATIONAL CAFÉ

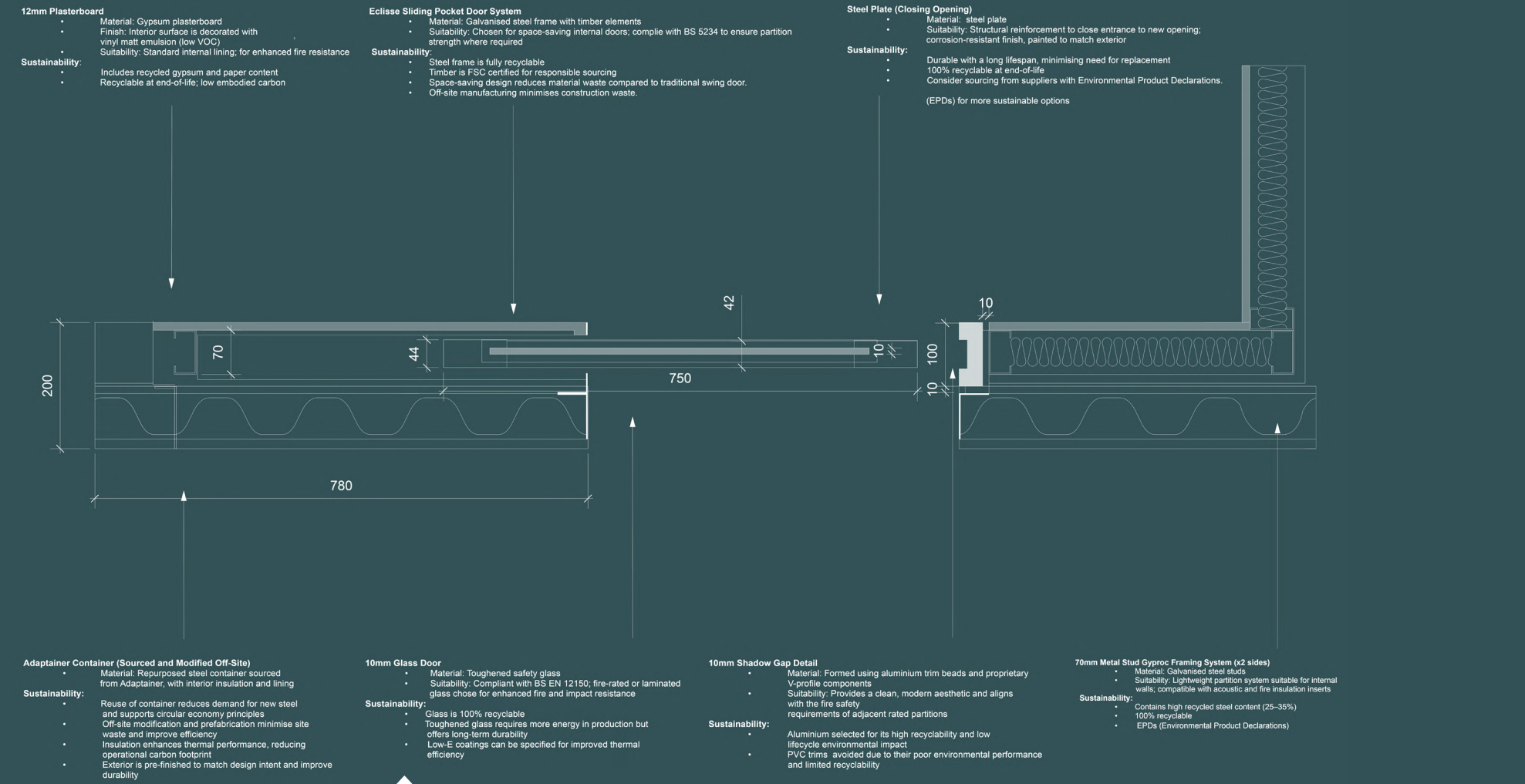
A WELCOMING CAFÉ OPEN TO THE PUBLIC THAT SERVES AS A SPACE FOR COMMUNITY CONNECTION AND LEARNING. IT HOSTS EDUCATIONAL TALKS AND SESSIONS LED BY SUZY LAMPLUGH TRUST AND WOMEN’S SELF-DEFENCE UK, PROMOTING EMPOWERMENT, RESILIENCE, AND AWARENESS OF WOMEN’S RIGHTS AND SAFETY.



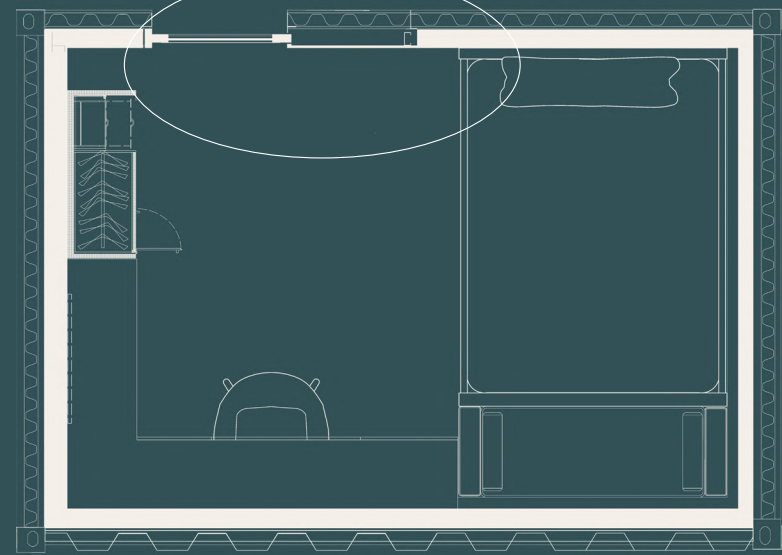
1:20 CROSS SECTION DRAWING OF THE CONTAINER BEDROOMS.



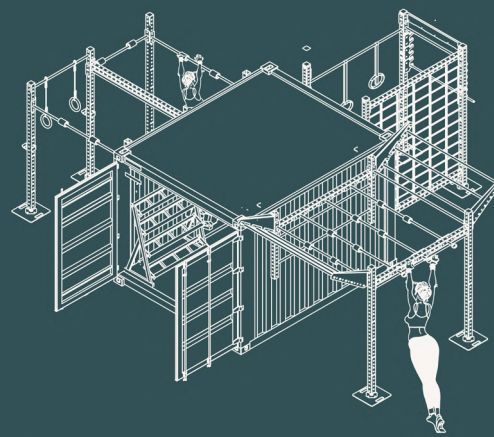
1:5 DESIGN DETAILING OF POCKET DOOR FROM CONTAINER BEDROOM



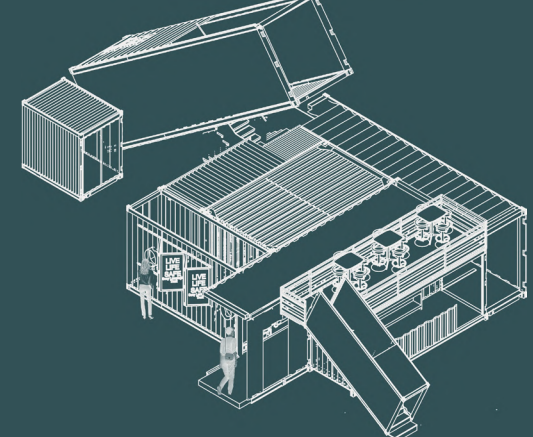
1:10 PLAN VIEW OF 1:20 CROSS SECTION



2ND FLOOR CONTAINER GYM ISOMETRIC DRAWING



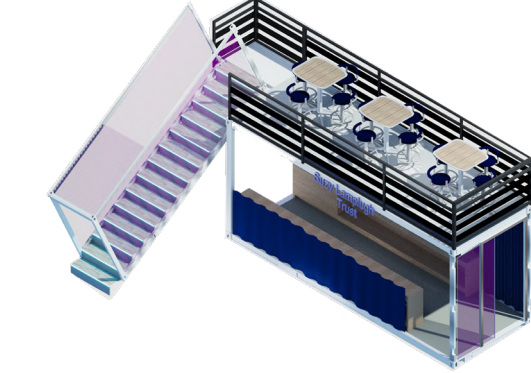
GROUND FLOOR CONTAINER SECURITY ENTRANCE ISO-METRIC DRAWING



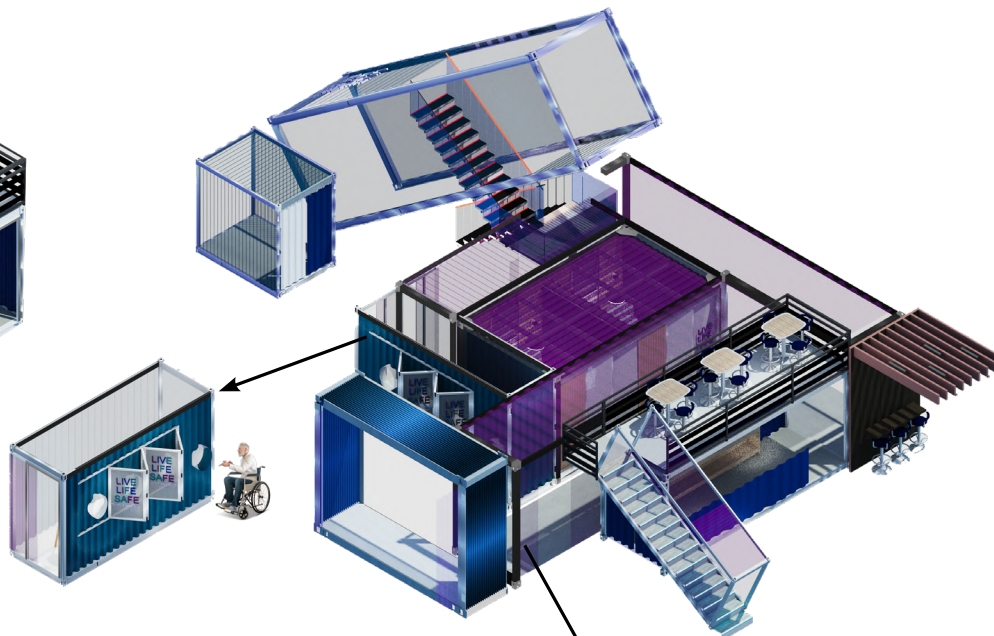
THIRD FLOOR FORMAL CONTAINER ROOMS (SLP INITIATIVES)  
EMOTIONAL AND MENTAL HEALING



2. SECURITY CONTAINER CAFE



3. GROUND FLOOR ARRIVAL & CHECK-IN SECURITY PROCESS



ISOMETRIC VIEW OF THE CONTAINER CORRIDOR WITHIN THE SECURITY SYSTEM



9. CONTAINER POD 2: PRIVATE REFLECTION & DEVELOPMENT



8. CONTAINER POD 3: INFORMAL COMMUNAL MEETING & THERAPY SPACE

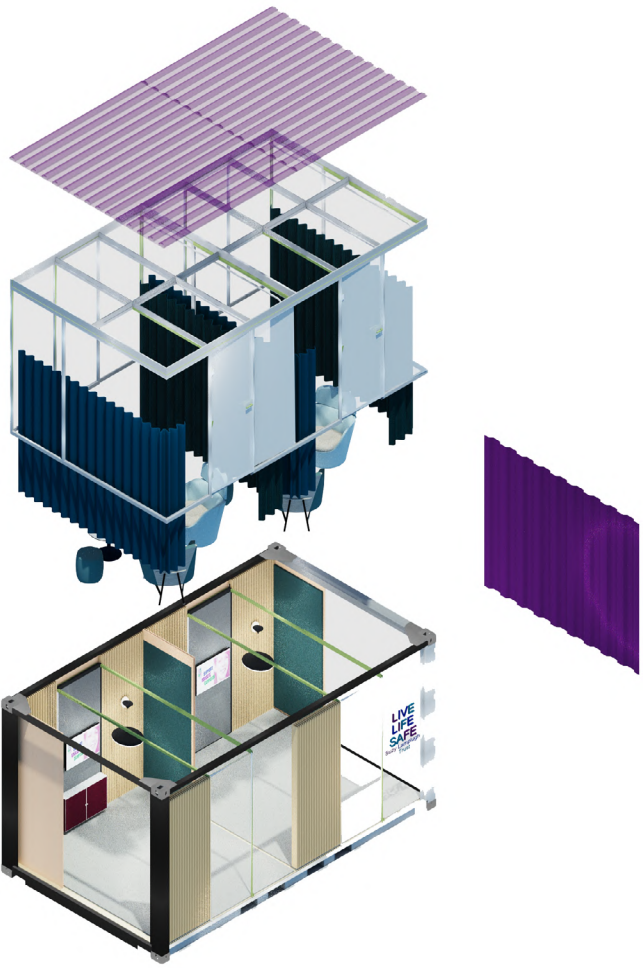


10. CONTAINER POD 1: FORMAL & EDUCATIONAL SPACE



EXPLODED AXONOMETRIC VIEW – CONSULTATION ROOMS

UPON ARRIVAL, CLIENTS ENTER THE CONSULTATION ROOMS WHERE THEY RECEIVE INITIAL SUPPORT, INCLUDING **FIRST AID** AND AN INTRODUCTORY PRESENTATION. HERE, SUZY LAMPLUGH TRUST STAFF PROVIDE ID BADGES AND ESSENTIAL INFORMATION BASED ON EACH INDIVIDUAL'S PROGRAM. THE SPACE INCLUDES SEATING FOR BOTH CLIENTS AND STAFF, A SCREEN FOR ORIENTATION, AND A WATER DISPENSER TO SUPPORT USER COMFORT DURING INTAKE.



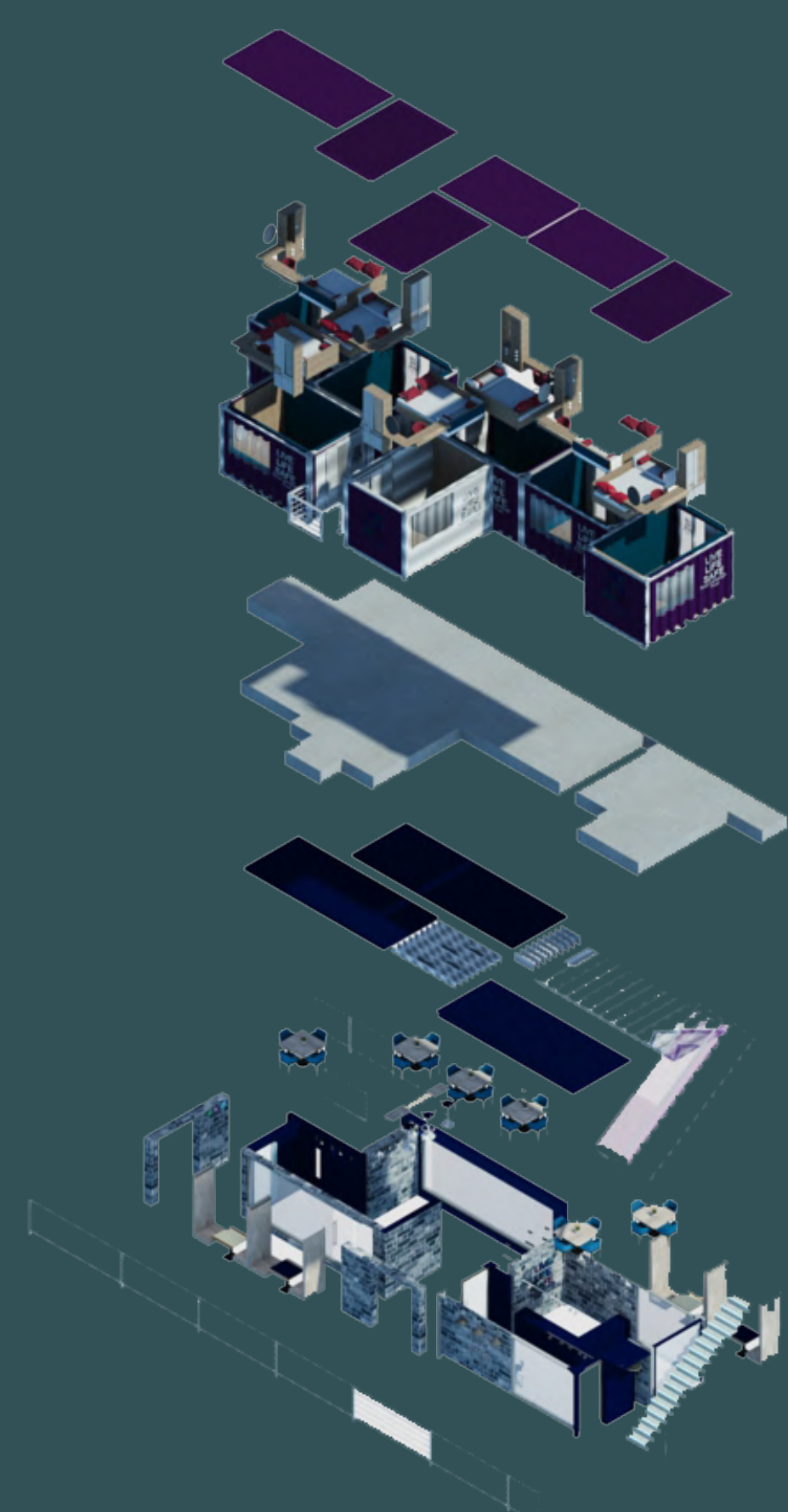
1. GROUND FLOOR COMMUNAL EDUCATIONAL CAFE



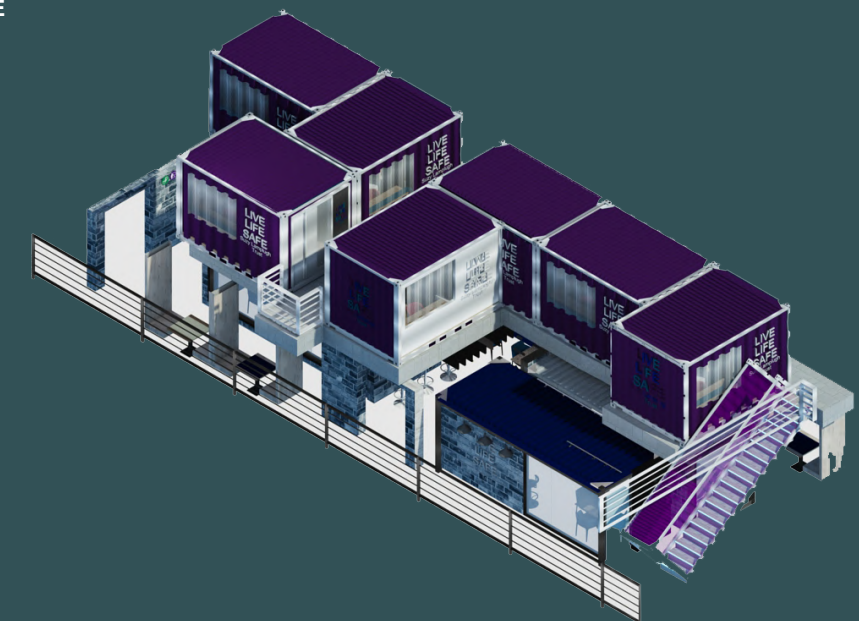


(EMPOWERMENT & STRENGTH) → BUILDING RESILIENCE & PREPAREDNESS

THE FIRST AND SECOND FLOORS CREATE A COMPREHENSIVE, EMPOWERING ENVIRONMENT WHERE WOMEN CAN BUILD PHYSICAL STRENGTH AND RESILIENCE THROUGH CONTROLLED CHOICE. THESE SPACES AFFIRM THAT ACCESS TO SAFETY, DIGNITY, AND OPPORTUNITIES FOR PERSONAL GROWTH ARE FUNDAMENTAL HUMAN RIGHTS. THE SECOND FLOOR OFFERS PRIVATE, ADAPTABLE FITNESS CONTAINERS AND A VERSATILE RIG SYSTEM DESIGNED TO MEET DIFFERENT ABILITIES, REINFORCING SELF-DETERMINATION AND PROVIDING WOMEN WITH A SENSE OF OWNERSHIP OVER THEIR HEALING JOURNEY AS THEY PROGRESS AT THEIR OWN PACE WITHOUT JUDGMENT OR CONSTRAINT. THIS IS THE SPACE WHERE WOMEN FOCUS ON BUILDING PHYSICAL STRENGTH AND RESILIENCE. HERE, THEY TRAIN TO BECOME EMPOWERED “SOLDIERS” OF WESTMINSTER—EMBRACING THEIR JOURNEY TOWARD AUTONOMY, CONFIDENCE, AND THE ABILITY TO FACE FUTURE CHALLENGES WITH STRENGTH AND DETERMINATION. TOGETHER, THESE CAREFULLY DESIGNED SPACES CREATE A FOUNDATION WHERE HEALING, EMPOWERMENT, AND RENEWED PURPOSE COME TOGETHER TO SUPPORT LASTING TRANSFORMATION.

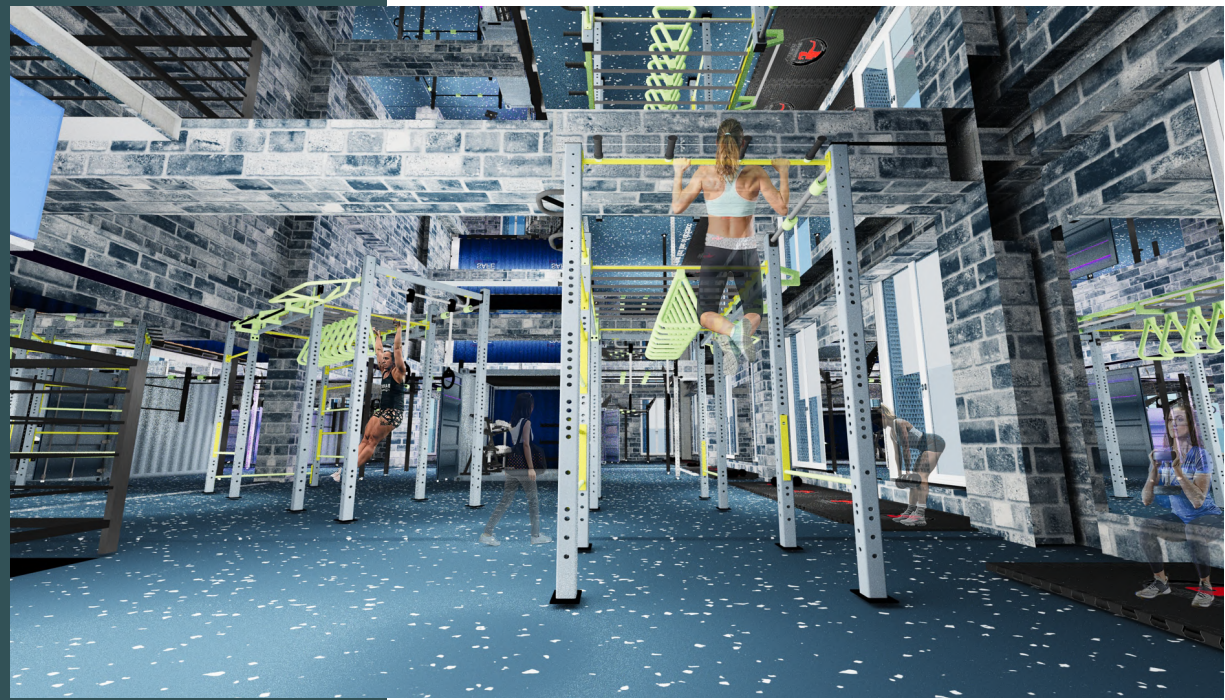


ISOMETRIC VIEW OF 4-5TH FLOOR DOUBLE HEIGHT CONTAINER STRUCTURE



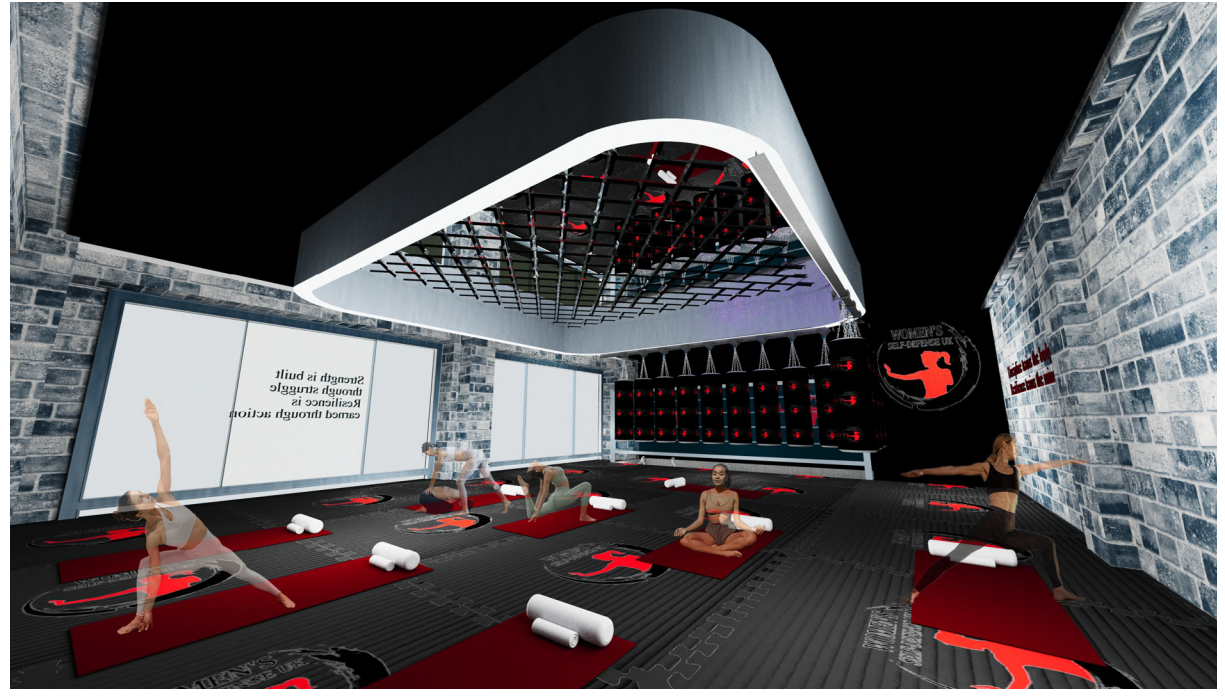
4TH - 5TH FLOOR

SHOWCASING THE DOUBLE-HEIGHT STRUCTURE OF THE 4TH AND 5TH FLOORS, THE 4TH FLOOR IS DEDICATED TO COMMUNAL DINING WHILE THE 5TH FLOOR FEATURES BRANDED SLEEPING PODS. THE SLEEPING CONTAINERS DISPLAY THE SUZY LAMPLUGH TRUST LOGO AND USE THEIR SIGNATURE PURPLE—SYMBOLISING SAFETY, PROTECTION, AND EMPOWERMENT—TO REINFORCE THE BRAND’S IDENTITY AND MAKE THE SPACE EASILY RECOGNISABLE. TOGETHER, THESE FLOORS CREATE A SENSE OF COMMUNITY AND PROVIDE SAFE, RESTFUL ENVIRONMENTS.

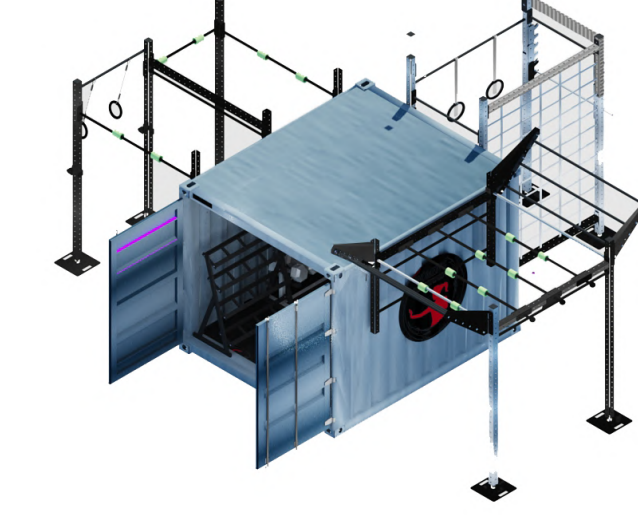


FIRST FLOOR: DYNAMIC MARTIAL ARTS TRAINING SPACE

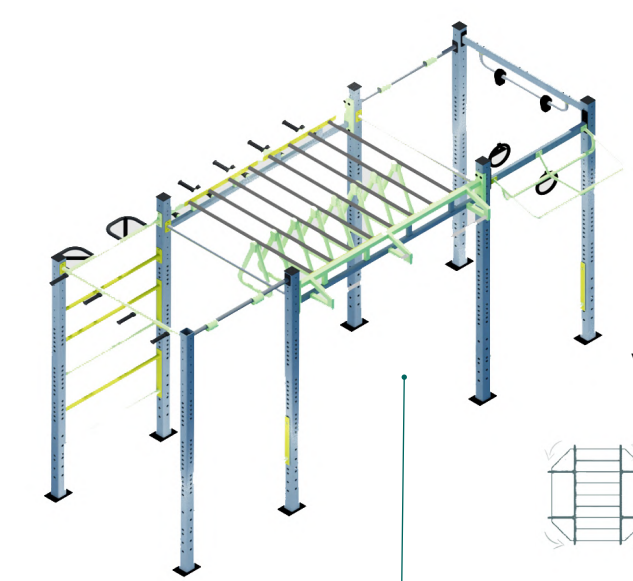
A FLEXIBLE MARTIAL ARTS AND SELF-DEFENCE SPACE EQUIPPED WITH RECONFIGURABLE RIGS AND MOVABLE BOXING BAGS, DESIGNED TO SUPPORT DIVERSE PRACTICES LIKE KICKBOXING, BOXING, AND YOGA. THIS INCLUSIVE ENVIRONMENT ENCOURAGES SOCIAL CONNECTION AND MUTUAL SUPPORT, EMPOWERING WOMEN TO RECLAIM CONTROL OVER THEIR PHYSICAL WELL-BEING WHILE PROMOTING EQUITY, DIGNITY, AND RESILIENCE.



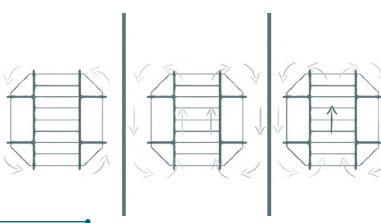
7. EMPOWERING FITNESS CONTAINERS FOR WOMEN



6. RIG FITNESS STATION



VIEW FROM ABOVE



11. THIRD-FLOOR VOID & GYM INTEGRATION AND CONTAINER ROOMS



EMPOWERMENT & JUSTICE: FORMAL POD SPACES SUPPORTING EMOTIONAL, MENTAL, AND LEGAL WELLBEING

THESE FORMAL PODS PROVIDE ESSENTIAL SUPPORT SERVICES—including offices, counselling, legal spaces, AND A STUDY ZONE—DESIGNED TO UPHOLD DIGNITY, EQUITY, AND ACCESS TO JUSTICE WITHIN A CALM AND ORGANISED INTERIOR. THE EMPHASIS ON NATURAL LIGHT AND SPATIAL CLARITY REDUCES STRESS AND CULTIVATES A RESPECTFUL, EMPOWERING ATMOSPHERE. A VISIBLE VOID OVERLOOKING THE SECOND-FLOOR GYM CREATES A CONNECTION SYMBOLISING THE JOURNEY FROM LEGAL AND EMOTIONAL EMPOWERMENT TO PHYSICAL RESILIENCE. THROUGH CONTROLLED CHOICE AND FLEXIBILITY, THIS THOUGHTFUL DESIGN SUPPORTS WOMEN IN TAKING CONTROL OF THEIR MINDS AND LIVES WHILE NAVIGATING RECOVERY AND ACCESSING THE LEGAL RESOURCES NEEDED TO RECLAIM THEIR RIGHTS AND AUTONOMY.

MATERIALS BOARD

