

MET POLICE-BATTENBURG

Located on London's Oxford Street, Battenburg is an experimental police station for the Metropolitan Police. This project **focuses on open communication with a focus on community through restoring social justice to the community.** Through the project's emphasis on open communication, the design fosters transparency, which is a crucial part of building community trust. By having **clear and open spaces, it symbolizes transparency to encourage a positive perception from the public.**

Through open communication, it humanizes the police force, emphasizing their role as protectors and supporters. **Providing comfortable spaces for police/public which can reduce the intimidating atmosphere often associated with police stations, resulting in a more positive experience.** A dedicated community activism space provides a platform for a variety of groups to voice their concerns, organize initiatives, and advocate for their rights. This evokes **change in how the public perceive the police making people realize the police are supportive.**



EXPLORING THE BRIEF-

Background: The site Change Money is located on **Oxford Street sandwiched between Primark and McDonalds.** Oxford street is the busiest shopping street in Europe, including some of the worlds famous fashion brands. However, due to the **pandemic, hybrid working and rise of crime on the street this is putting pressure on the street's popularity** and causing it to face a demise or a resurgence.

Significance of the project: Many large-scale retail developments are undergoing redevelopment. **Westministers new four themes for re-development are Greener, Smarter, Future and Together.** An aspect of 'together' is **bringing communities in unison,** which could be encouraged by a **positive and safer environment** with the help of a more **approachable police station in order to evoke confidence in reporting crimes.**

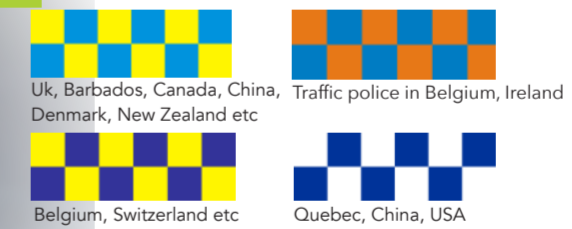
The project aims is **restore public trust and confidence in the police,** as the trust in police is at an all time low. Therefore the aim is to design an **eye catching office which is a customer friendly base for the police officers.** The sites main purpose is to be a **location for members of the public to be able to report and incident.** Each member of the public will need be re-assured/ understood and will need to feel safe, by presenting the police in a positive way. The station **needs to be a way to distribute information about personal safety, first aid and crime prevention.** Private areas for the office need to be considered in order to have an effective functional workplace.



THE SITE AND LOCATION-OXFORD STREET

The site is located in the heart central London just at the **end of Oxford Street nearest to Tottenham court road station.** The site is currently a **currency exchange shop**, the character of the shop is very **dirty and run-down.** The appearance of the shop almost appears **stuck in time compared to the retail units next door.** There is a sense of post-war architecture in the facade of the building really showing the **deep history of the building.**

BATTENBURG MARKINGS-



- Battenburg markings or Battenburg markings are a **pattern of high-visibility markings** developed in the United Kingdom in the 1990s and currently **seen on many types of emergency service vehicles in the UK and other countries** such as America, Australia and European countries.

- Primary objectives of Battenburg markings:

- Made officers and vehicles more conspicuous (E.g. to prevent collisions when stopped)
- Made police vehicles recognisable at a distance of up to 500 metres (1,600 ft) in daylight
- Assisted in high-visibility policing for public reassurance and deterrence of traffic violations
- Made police vehicles nationally recognisable



The client- Metropolitan Police

The client is London Metropolitan Police Service which have three core principles which are the goal of the police is to prevent crime, earning public support and approval is the key to preventing crime. Having a station for Metropolitan police station is important as it prevents looting, theft from Oxford street this will help manage and solve the high crime rate.



Less than half of public trust police in wake of scandals, new poll shows - and it's not just scandal-hit Met

Labour accuses government of being 'asleep at the wheel' on the issue

Due to the **lack of trust in the police** from major police scandals. These scandals have led people to **want more transparency and more honesty from the police.** This point is important when developing my design because as I want my design to be a police station that is **welcoming and makes the public feel safe.**



Collaging various parts of police cars from all around the world create a facade that is highly recognisable for all members of the public. Leading to people easily finding the station and being able to go for help.

Also, by collaging Battenburg markings using its various colour ways allows tourists from all around the world to find a place where they can report crime in a safe warm environment.

USERS OF THE SPACE AND THEIR NEEDS-



EDUCATOR - Space for people to educate/display knowledge. Changing the police narrative and being an educator hub for people to learn more.



INJURED - need a space for a medical room in order to help them with their injuries and administer first-aid. Allowing place to store a defibrillator.



LEARNERS - Space for people who want to be curious and want to be educated on key important topics from the station educator hub.



VICTIMS - Space for people who have experienced crime to feel comfortable reporting a variety of different crimes they have experienced in a private and safe setting.

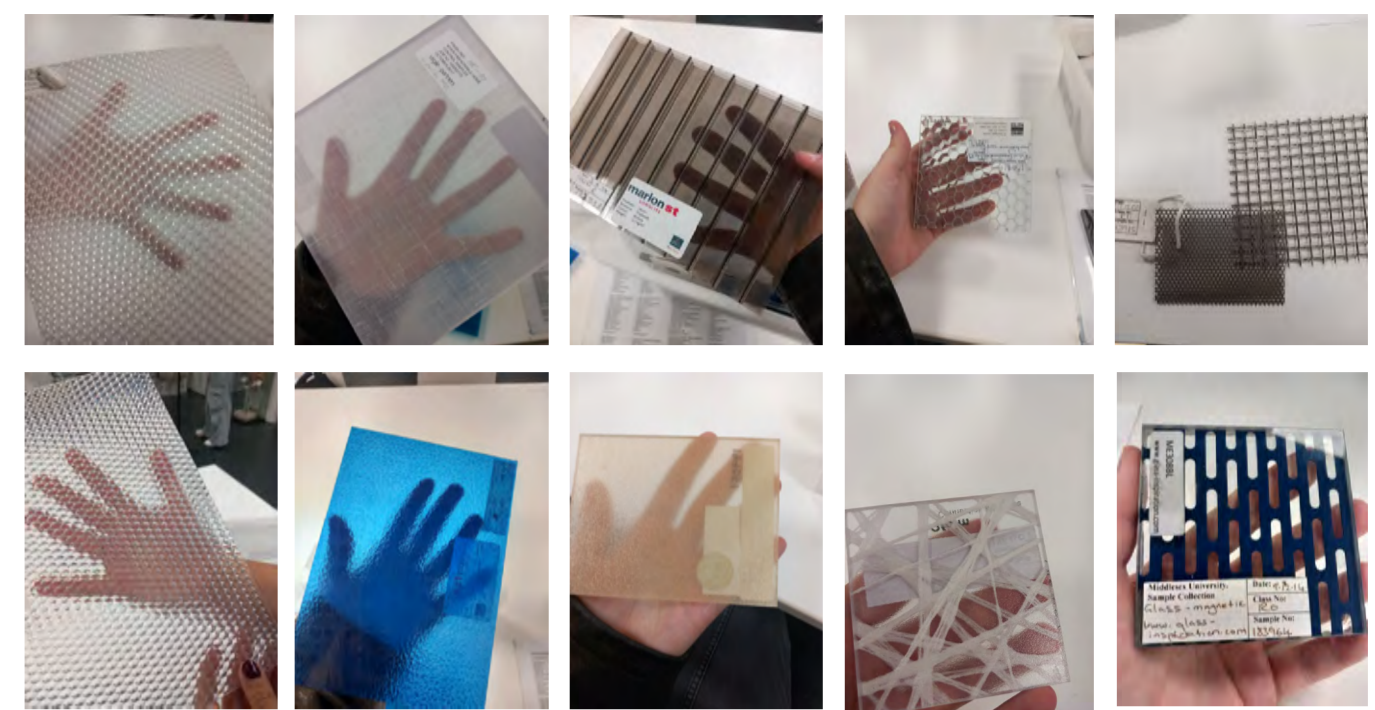


WITNESS - need for people to easily be able to report crimes or deliver witness statements in a professional way.



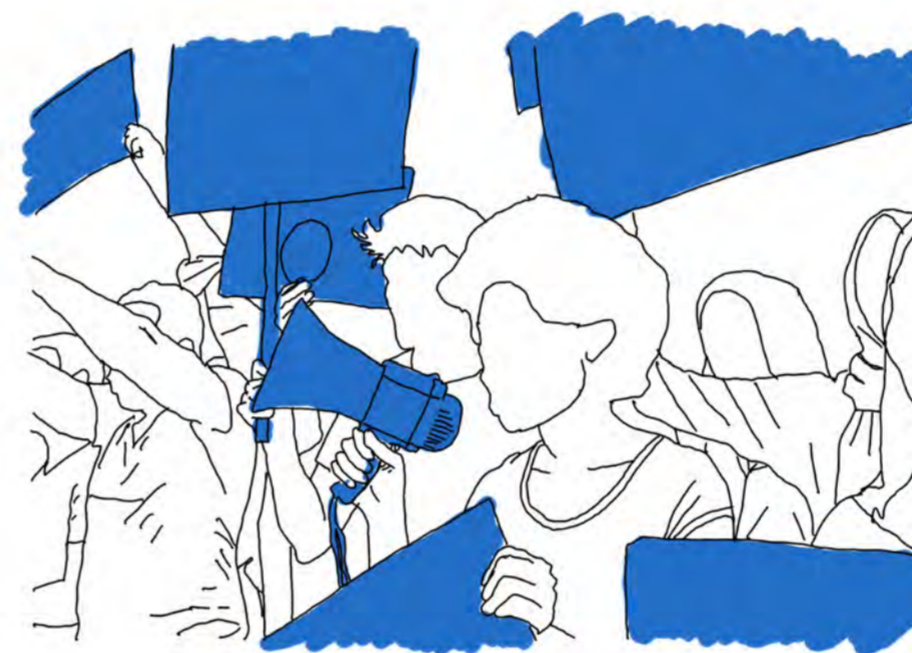
EMPLOYEES - Space for police officers to recharge batteries with a small Kitchenette. Along with changing and toilet facility for officers to use. There also needs to be a briefing room space for officers to use before every shift.

EXPLORING THE IDEA OF TRANSPARENCY-



Exploring various different types of transparent whether that it is frosted glass or patterned plastic panels. Also, experimenting with materials that play with light with offering small glimmers of transparency and non transparent.

EXPLORING THE IDEA OF COMMUNITY ACTIVISM-



Community activism- is about people in communities creating opportunities for growth and change and deliberate movement towards ends which they determine and in the process increase their critical awareness, knowledge, skills and attitudes.

- Using community activism in my design would create a space that invites various groups in that the public think the police are against such as groups that want to spark positive social change such as BLM. This evokes change in how the public perceive the police making people realise that the police are supportive of these groups.

- Exploring this idea in my space will allow these groups to come in and use the space to evoke change in the community. Ensuring that the police persona is a changed into a positive outcome from the public.

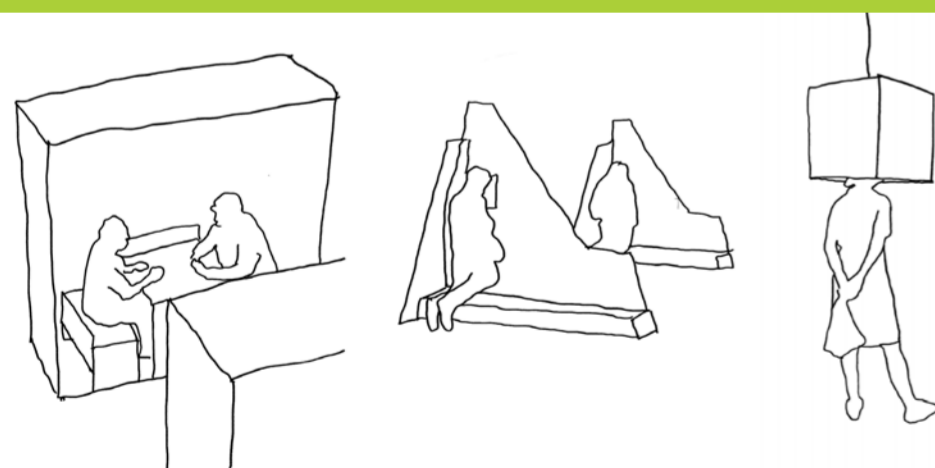


ANALYSING THE SCALE OF SPACE-



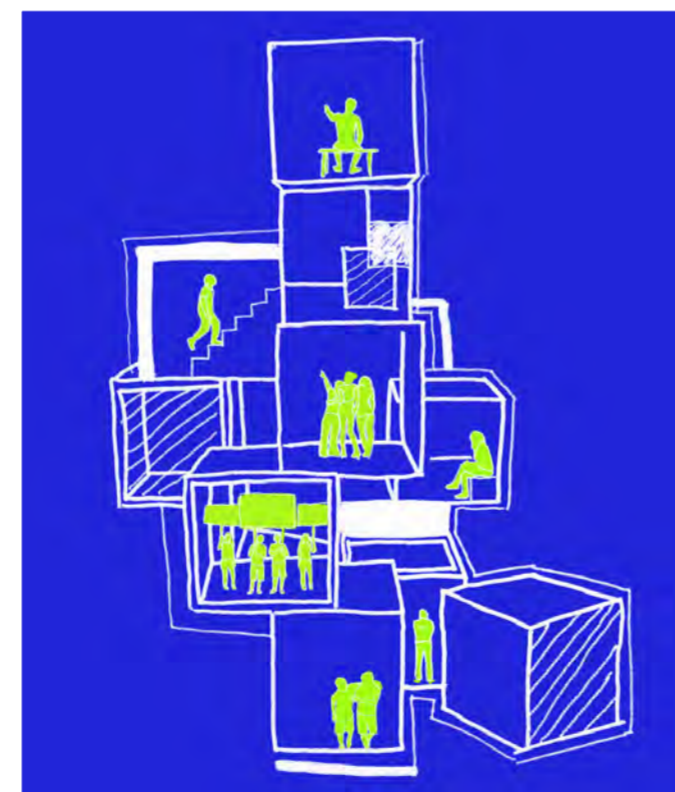
Due to the width of the space being an issue with the site I wanted to physically map out the area for 3D forms in the space. This process helped me indicate that the idea of the three-dimensional battenburg needs to be compliment and inter-grate to the site and its space that it offers. Also, that the cube shape needs to immerse itself into the site to almost appear embedding into the walls.

EXPLORING IDEA OF CONVERSATION-

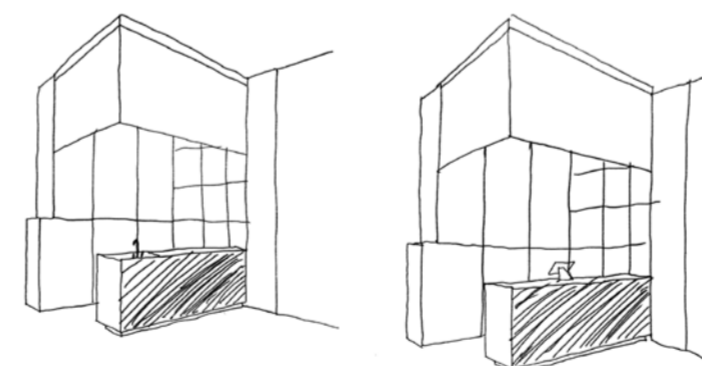


The process of communication and conversation is important when exploring the idea of the police and the community. Spaces for conversation are important as they are places for people to give/offer support and evoke change. By having different types of spaces for people to talk and reflect is important when developing my design. These spaces can be more intimate and enclosed or more relaxed and open.

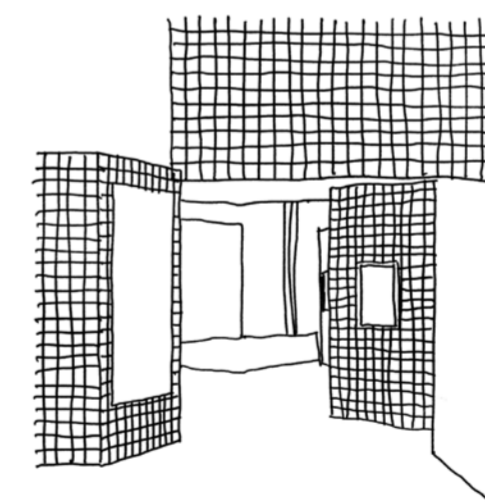
DISSECTING THE IDEA OF THE BATTENBURG CUBE-



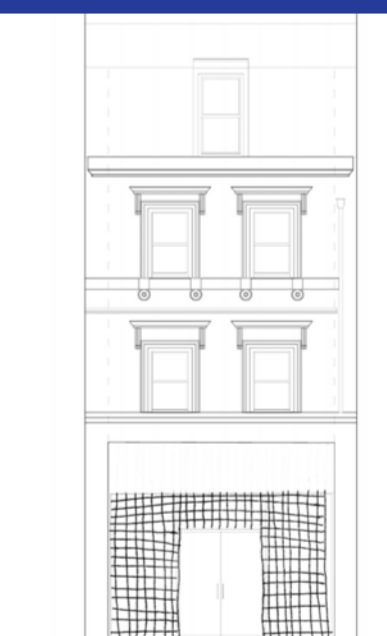
By breaking down the idea of the cube and giving each cube its own purpose and use allows for the multi-use space act effectively and functional to fit each of the users wants and needs.



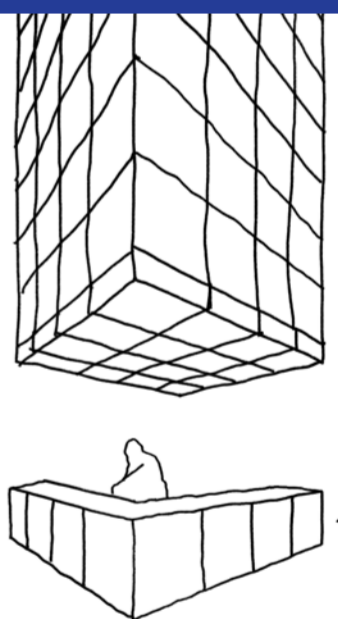
By cutting into certain areas of the cube allows for the cube to be formed into having a purpose for different functions such as kitchen or reception desk.



By using metal mesh as a motif for the battenburg allows to create a built up environment that can be folded up to create a built up scene.



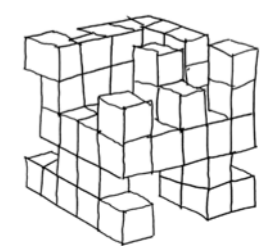
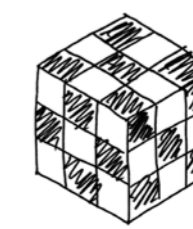
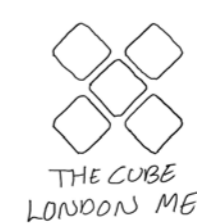
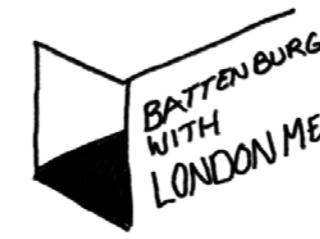
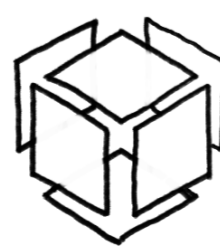
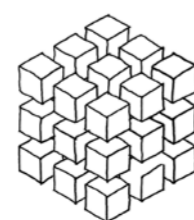
Using the idea of the battenburg that can be illuminated to act as a beacon during the night.



By using small cubes that are stacked in order to create a built up purpose that is extended on the ceiling such as reception desk

BRANDING FOR THE POLICE STATION-

The current logo of the Met seems very boring and intimidating and also rather prestigious and outdated. I want the new logo to work and represent the new brand and identity of my police station.



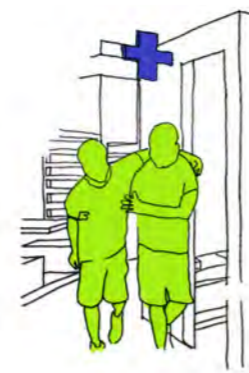
STORYBOARD-



When entering the space users are greeted with the community activism area where certain groups will come in to help change the community and the public's opinion of the police.



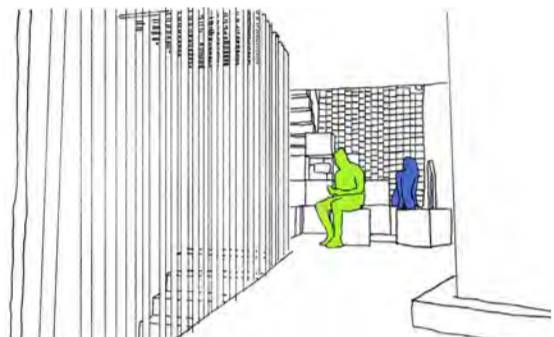
When entering users can go to reception to ask for help and advice and the receptionist will refer them to another part of the space.



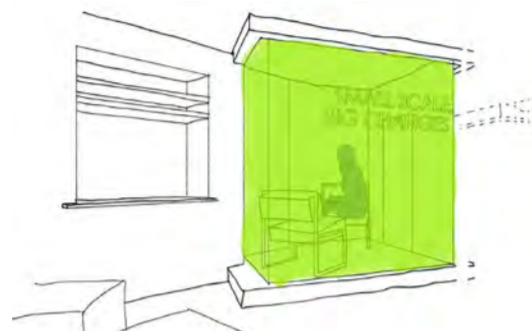
On the ground floor there is a medical centre where members of the public go to get first aid.



Located in the back of the ground floor is a kitchenette area which is for members of staff to take their breaks.



When walking up the ground floor stairs users are greeted with a waiting area where they can grab a refreshment and relax.



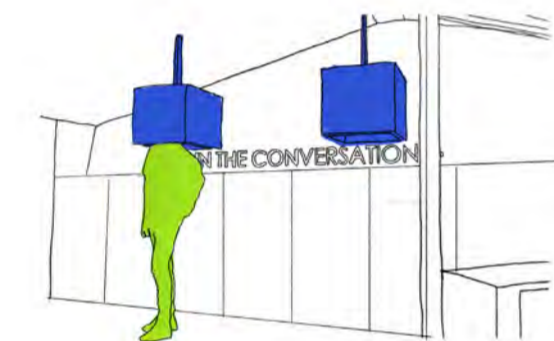
Conversation booths are added for victims or witness to speak privately with members of staff.



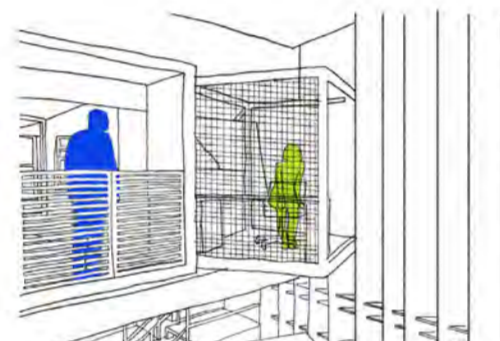
Briefing rooms also a multi-purpose when not in use and is used as another area for community activism to take place.



Bathroom and locker area is provided to members of staff to store uniform and belongings.



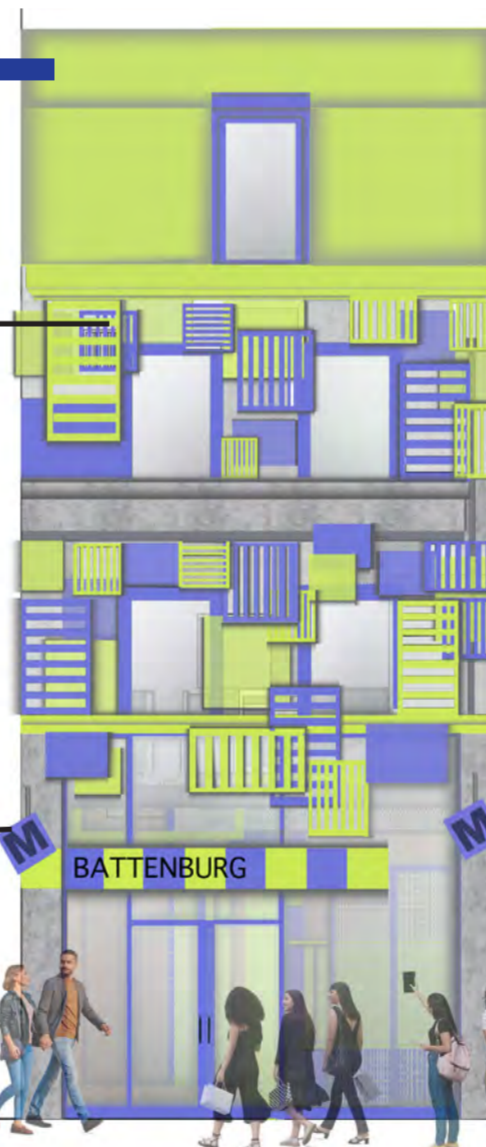
Located on the third floor is conversation booths where you can privately answer phone calls or spark up a conversation with a stranger.



More private workstations are located on the third floor for members of staff, along with a viewing platform for people to reflect upon the whole interior.

FRONT FACADE OF THE SPACE-

Battenburg symbolism- this symbolism is further on the exterior of the space this allows for a continuous transition from exterior to interior all relating back to the traditional Geometric battenburg logo



Logo- through developing the logo in order for the logo to represent the Battenburg used on police cars and uniforms. The logo is a rotated cube that has the letters of Met written all on each face of the cube.



The combination of both light and the color palette develop this glowing atmosphere making people pay attention to the space. This atmosphere is **perfect visibility for the police station on the street ensuring that people are able to easily find the station.** This important as during the evening Oxford Street is incredibly popular for night-life so it's very important that there is a police station that is visible in the later hours.

THE SPACE AT NIGHT...



Viewing platform- allows users to view and reflect the whole interior giving them complete transparency

Conversation booths- Allow you to be able to sparks new conversation with other strangers and is also a place where you can use your phone

THIRD FLOOR



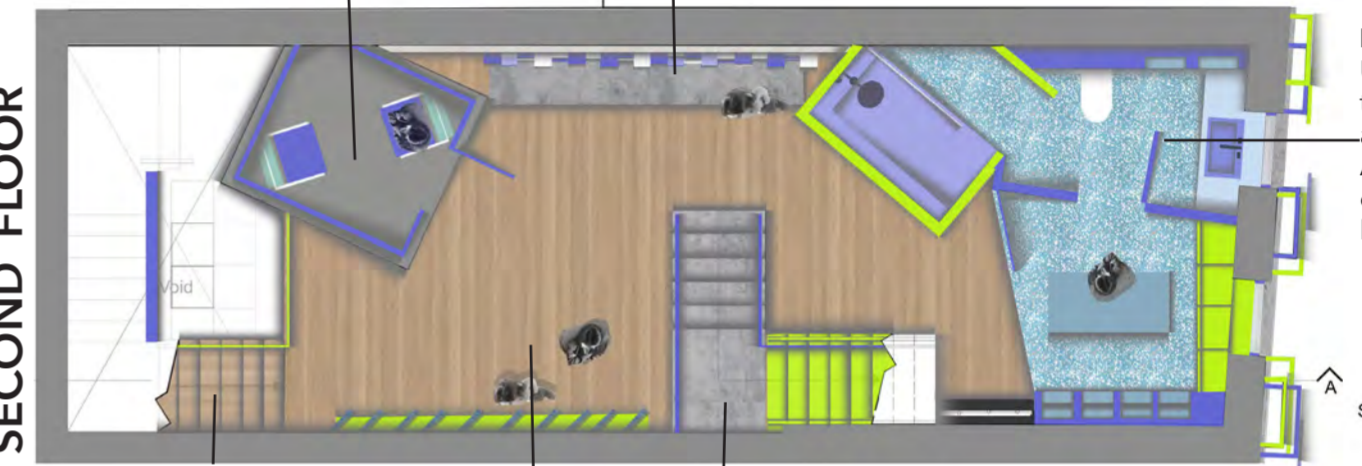
Work Stations- allows staff to have a place to use their laptop and do paperwork that is more private from the exterior but offers full transparency

Storage Units

Work station for staff Stairs leading up from second floor Seating area

Confessional booths- Used by mainly victims or witnesses to be able to comfortably speak to an officer in a private secure atmosphere.

SECOND FLOOR



Bathroom/lockers- Used by staff as a place to store their uniform and there belongings. Also, a private area for officers to use the bathroom facilities

Stairs leading up to the second floor Display Stairs leading up to the third floor

Confessional booths- Used by mainly victims or witnesses to be able to comfortably speak to an officer in a private secure atmosphere.

FIRST FLOOR

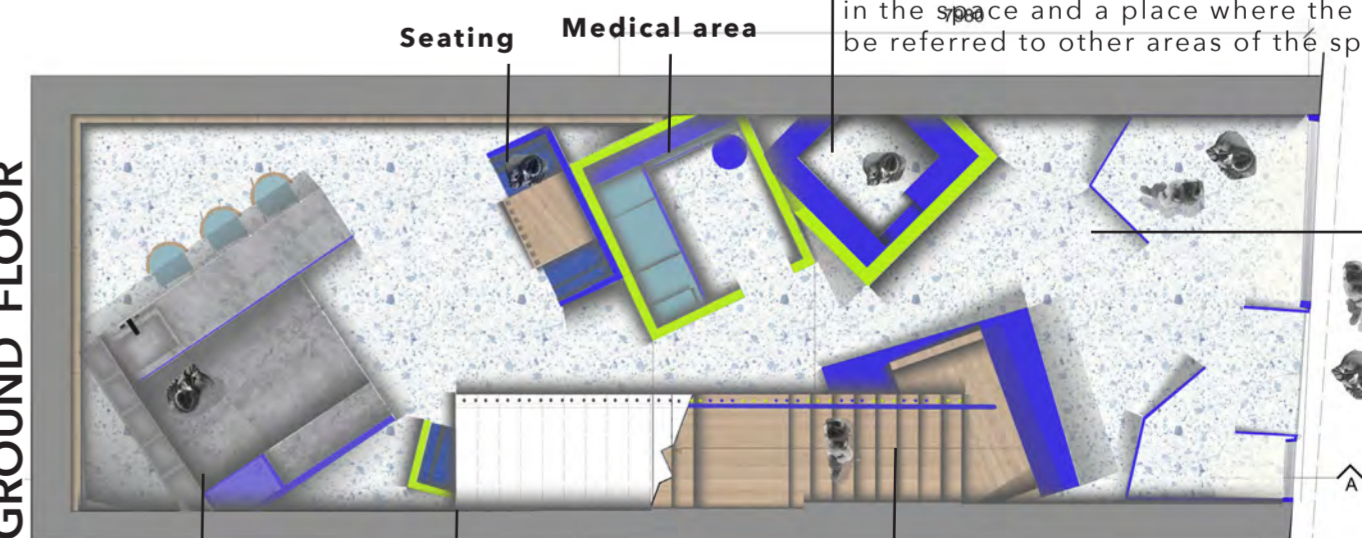


Briefing room/Community activism space- Used by staff as a briefing room before shifts and then is used as another community activism space. Offering a more intimate feeling than the ground floor one allowing people to talk to the communities group

Stairs leading up to the second floor Waiting area- A space for users to sit and wait and grab a refreshment before talking to one of the officers Refreshment area Stairs leading up to the first floor

Reception area- A space for users to be greeted and welcomed in the space and a place where the public can be referred to other areas of the space.

GROUND FLOOR

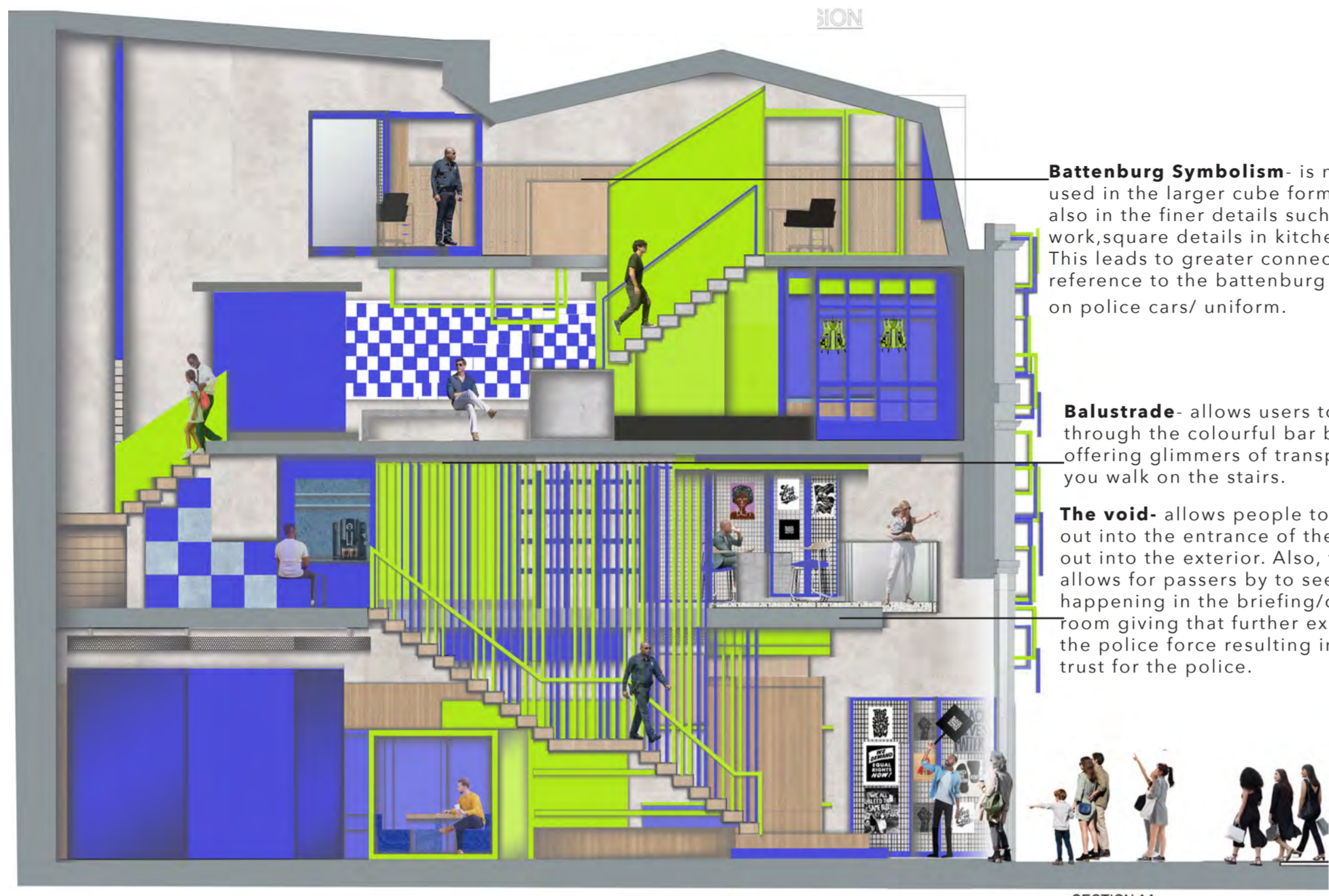


Community activism space- Used by various different groups that use the space to promote positive change for the community. This allows the public opinion about the police turn from a negative to a positive.

Kitchenette- Used by member of staff on their break as a place to make food/ drinks and relax.

Stairs leading up to the first floor

SECTION AA-



Battenburg Symbolism- is not only used in the larger cube forms but also in the finer details such as 3D art work, square details in kitchen panels. This leads to greater connection and reference to the battenburg logo seen on police cars/ uniform.

Balustrade- allows users to view all through the colourful bar balustrade offering glimmers of transparency as you walk on the stairs.

The void- allows people to look down out into the entrance of the space and out into the exterior. Also, this void allows for passers by to see what's happening in the briefing/community room giving that further exposure of the police force resulting in greater trust for the police.

SECTION AA

This section really showcases the atmosphere of the space and all the different elements and zones of the space. Even though these zones are instilled there is an ultimate freedom when walking around the space. This was in order for the public to feel as if the police are being transparent with them.

KITCHENETTE



Due to the kitchenette being located in the back of the space still offers that much needed rest and relaxation for officers on their break. But due to the kitchenettes dramatic angle allows people to be able to view down into the depth of building. This is further giving the public what they want regarding police being more transparent.



On the second floor the community atmosphere is very prevalent as it is home to the waiting room, briefing/ community space and one of the conversation booths. This blend of functions on one floor make the first floor very lively and social atmosphere for members of the public.

The use of transparency when it comes to these confessional booths allow outsiders to see there is someone present but not see fully what is going on in the space. This gives the occupier privacy to express to an officer what they are looking for the polices advice/help.

ENTRANCE- COMMUNITY ACTIVISM AREA



Due to locating the community activism hub at the front of the space allows passers by to instantly see the changes the police has made to change their identity. Resulting in a positive outlook and change for the police but also the community as well.

By having the posters for the groups near the entrance changes the narrative of police stations being cold and lifeless. Now they are bold striking community hubs that encourage you to explore around the space.

ELEVATION-



Work Stations- allows staff to have a place to use their laptop and do paperwork that is more private from the exterior but offers full transparency

Bathroom/lockers- Used by staff as a place to store their uniform and there belongings. Also, a private area for officers to use the bathroom facilities

The void-The void allows the public to see what's happening in the briefing/ community room giving that further exposure of the police force resulting in greater trust for the police.

Reception area- A space for users to be greeted and welcomed in the space and a place where the public can be referred to other areas of the space.

SECOND FLOOR-



The second floor implements the idea of privacy but in many forms confessional booth offers privacy from the other parts of the space but also provides a lot of transparency due to you being visible once you are inside the space. But on the other hand the second floor is the only space that offers full privacy due to the Locker and bathrooms for staff. But the second floor is slightly private and can be able to viewed from the viewpoint on the third floor.

THIRD FLOOR-



Through playing with angles through Experimenting with cubic shapes allowed me to create a contemporary work desk that still represents the Battenburg and the police.

These striking pale blue angled display shelves lead the viewers eyes directly up to the work desk and also to the viewpoint where you can see them from down below.

Using the mix of mesh and glass for this work station is very contradicting but works well as it represents the geometric cube of the battenburg but had the Delicacy of the transparent desk.

CROSS SECTION -

LANDING-

Is constructed through wooden joists which are lined inside with 150mm of insulation. This is then finished with oak Laminate flooring which can be secured using a laminate glue.



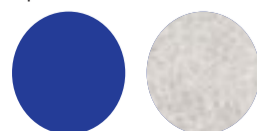
STAIRS SPINDLES-

These stair spindles are made from stainless steel and are welded to create smooth cylinder shape. These are then powder coated in cobalt blue and electric yellow and then stainless steel finish is applied to Ensure its all



KITCHEN-

Is made of pine joinery and butt joints to construct the frame, which will finished with a cobalt blue laminate wood look on all cabinets and doors of the kitchen. These doors/drawers will be accessible by a soft closing hinge. The worktops used in the space is an industrial concrete laminate worktop.



STAIRS-

Is constructed using steel stringer which holds the weight of the staircase. The staircase also has Timber joint called moitise and tenon used to overlap the panels in order to keep secure pine was used for the joinery. The stairs are then finished by a 25mm laminate floor finish.



Through exploring different ways to start or have a conversation has led me to have multiple conversational points throughout my space. This is allowing a victim to be able to sit and reflect and talk to an officer or starting a conversation with a stranger these all play a significant role in bringing together community to evoke change.

The idea of a geometric shape as an office is seen as something that is normal but in order for the space to be fully transparent with the public the walls of this office must be open but feel enclosed. The idea of using the cube as a framework instead of a solid shape feels intimate but in reality its very exposed.