



What is the goal of the project?

- Encourage Equity
- The democratisation of creative making

Aim of the brief?

Design a Starter studio/Incubator for recently graduated 3D printing engineer students, **encouraging local people to come in** and collaborate with the graduate maker to produce their own pieces

Accessibility and opportunity for all

The emphasis needs to be on the graduate-public relationship and **awake curiosity in the public's eye** and **engage with the community**

What facilities are needed for the space?

The space will require a:

-Working zone:
Workshop area (for 12 individuals), sales/display zone (to sell products)

-Living zone:
Sleeping area, wash zone, cooking and eating area, relaxing/socialising area

Halfway House - Graduate Starter Studio

A home/work space for a 3D printing engineer

Location of the site?

The building is a three story one, located on the Upper Street of Islington, currently being used as a Gordon Ramsey restaurant

The site

The alleyway has a unique and strong sense of character

The client who will live in the halfway house has a connection with the individuals operating in the eateries and small businesses tucked away in the alleyway since both are creators supporting their own business

Business Design Centre opposite to the site

Tube station few minutes walking distance away



Site Analysis - Photomontage to highlight important relations to the site

Conceptual Identity and Character



Occupation: **3D Printing Engineer**

Age: 20's

Necessities: Living, working, selling, displaying, meeting area

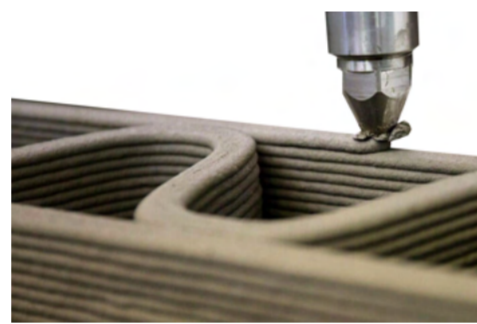
Activities: 3D printing, 3D digital modeling and manufacturing



Line representing the **filament** going through the space as a **journey**



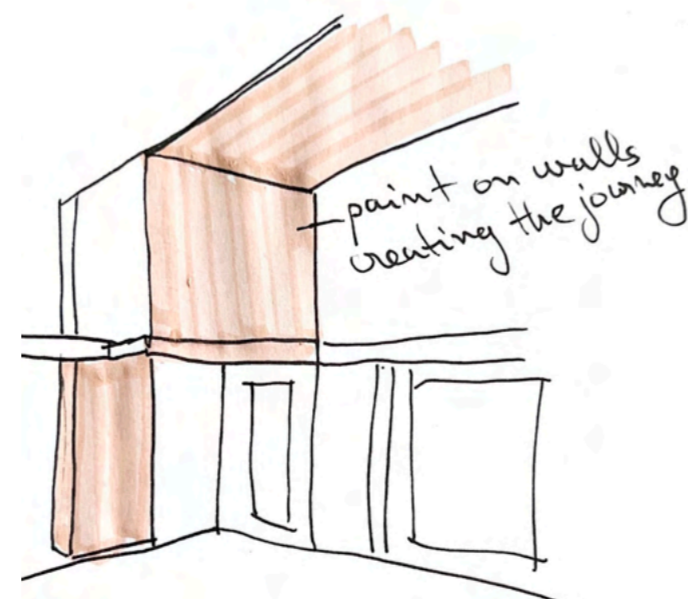
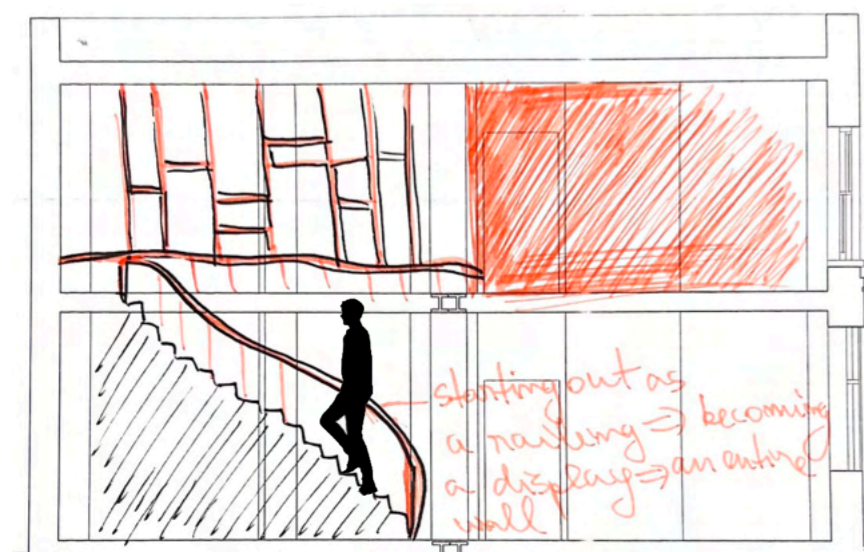
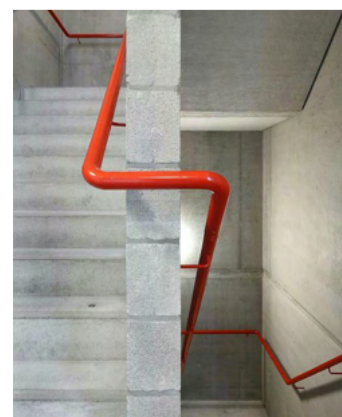
The filament then **melts** and becomes a new object, representing the transformation and **creation of something new**



Taking the idea of the evident **layering** of the super-sized concrete 3D printer

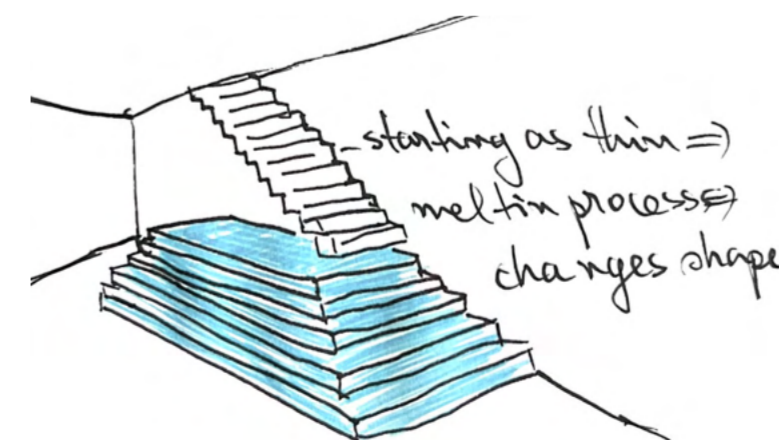
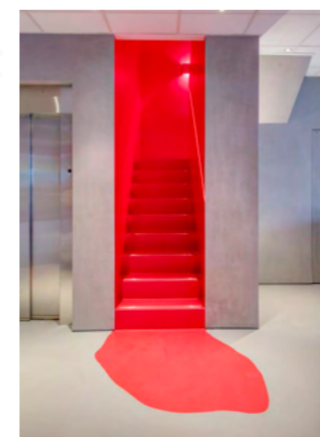


"Filament" creating the journey



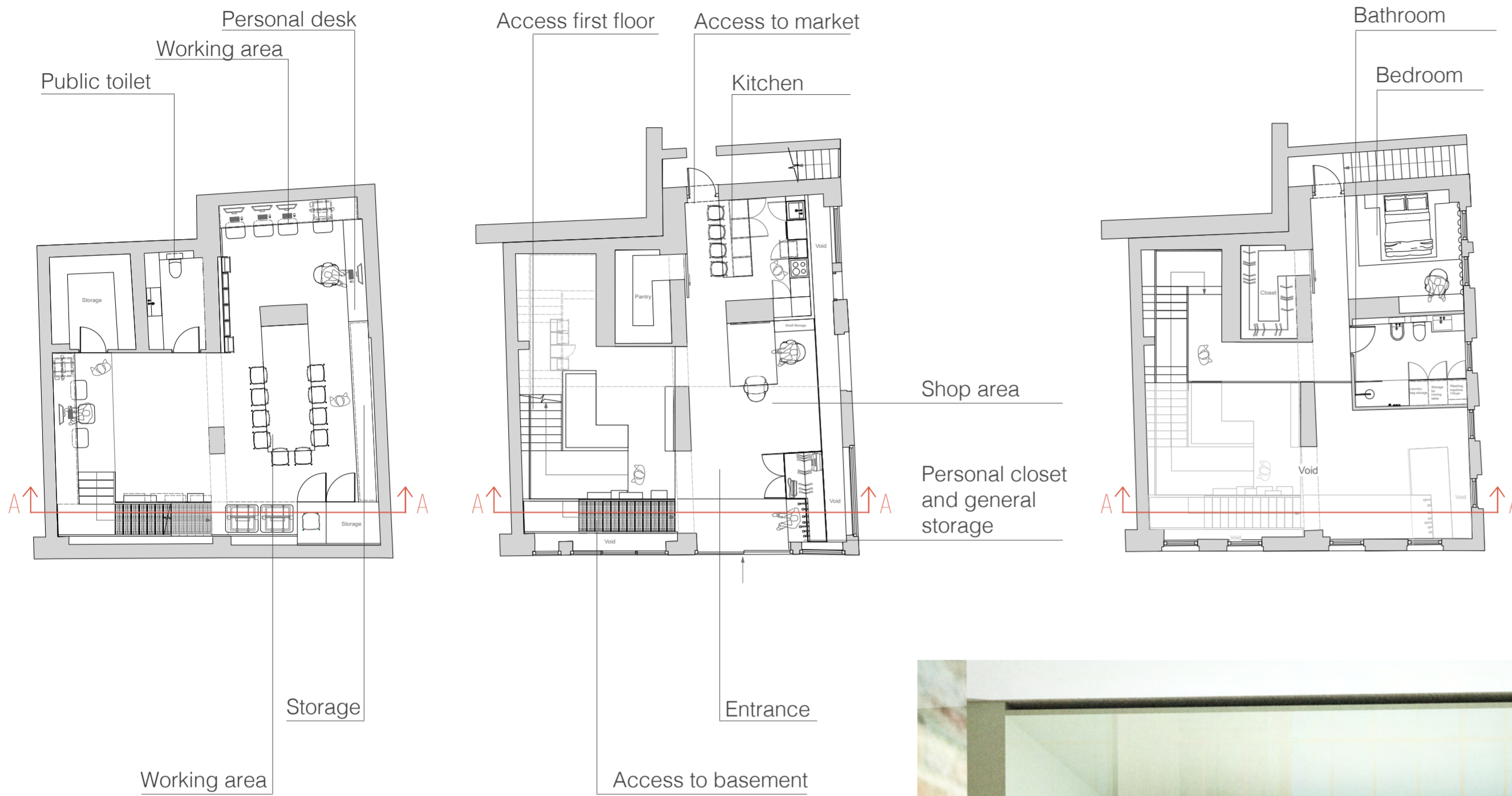
Mimicking the melting process

Transformation and layering



Materiality inspired by filament's spool

Entrance - Ground floor - Sales area



Section AA



Basement - Public access to the 3D printing workshop

Perforated metal, orange staircase reflects the **filament spool's pattern** and the **colour of the heated up printer's nozzle**



Product display as entering the shop area, also acting as a 'fence', stopping people from falling into the void

Projector attached to the column, for presenting and discussing business

Personal storage unit for documents, etc.

Table for discussing business and custom prints

Basement - Workshop area

Wood ceiling offering warmth to the space



Besement floor plan

Exterior - Perforated metal Facade

A bold, orange perforated metal cover, that is contrasted with a dark blue colour, becoming eye-catching, luring customers in

Some of the existing brickwork is apparent, contrasting between modern and old



The external facade is inspired by the filament spool's pattern and texture

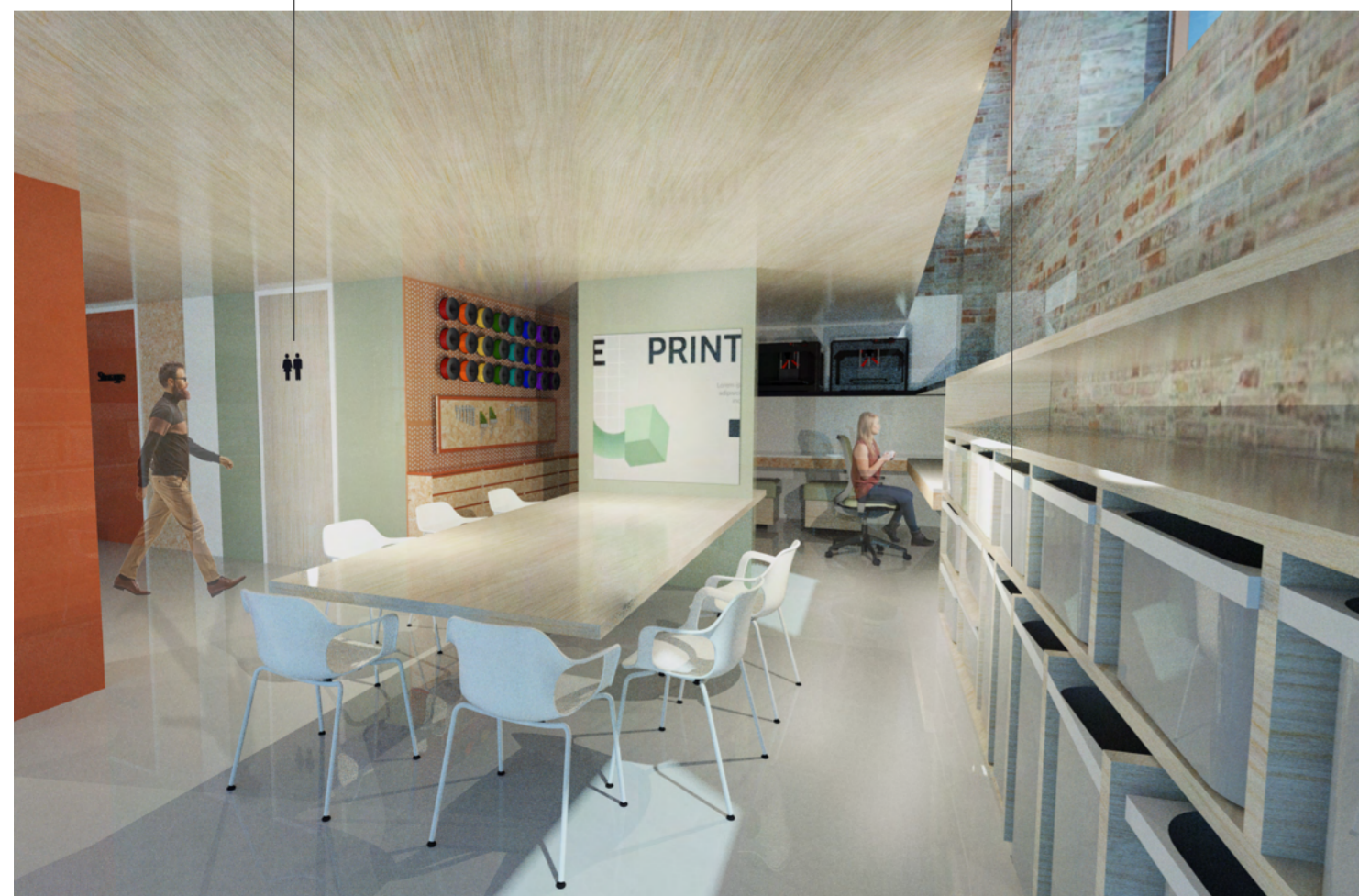
Work area to fit 12 or more students - offering them the chance to create

Different sized, bespoke, low shelving unit to let the light flow in from above

Strong graphical signage for the storage and bathroom area to make the space more eye-catching, dynamic

Custom designed, multifunctional, seats with storage underneath them

Orange staircase transforming from perforated metal sheets into solid orange blocks, showing the idea of transformation, similar to the printing process



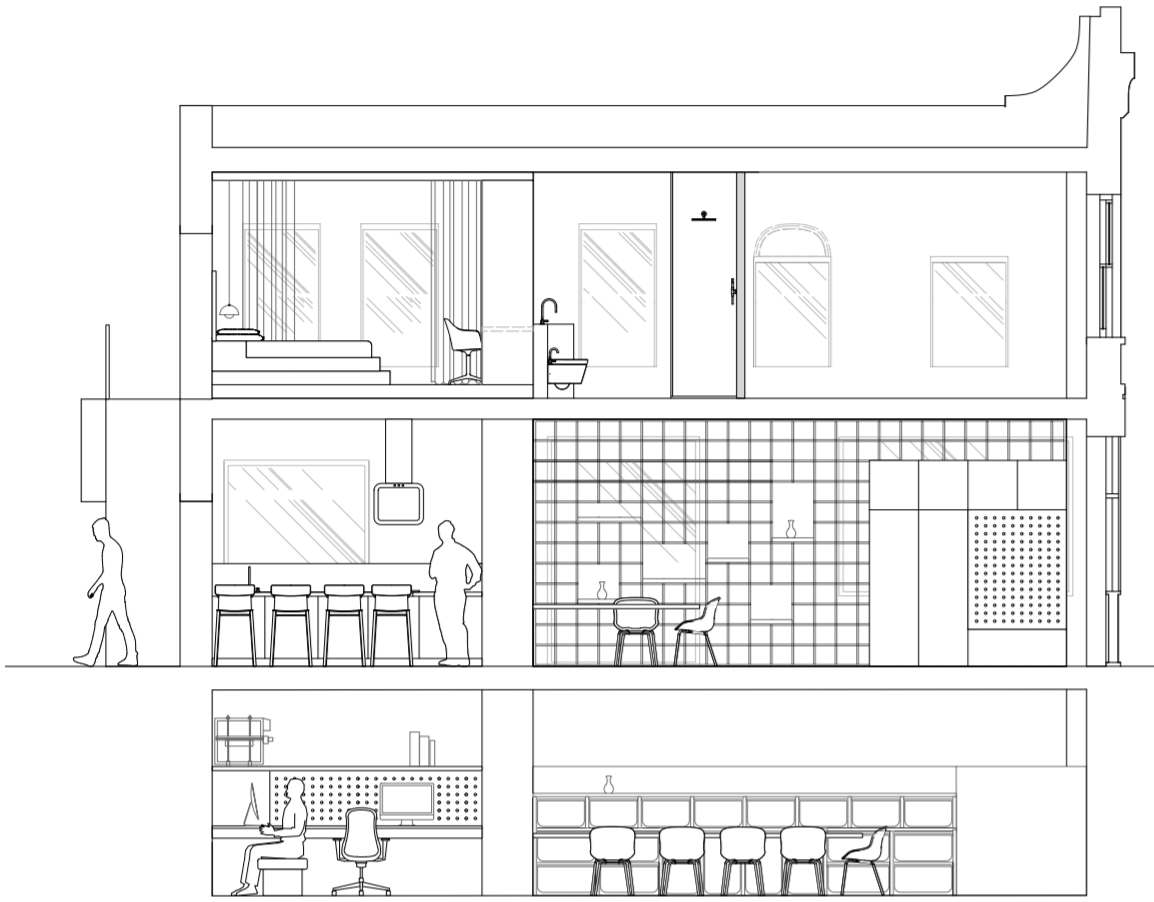
Filament rolls are on display to showcase the different colour options available, with storage underneath them



Private Living zone - Bedroom and Bathroom

The equity feature of this area can be recognized in the fact that this is a neutral interior, suitable and inspiring for all students who will live in it

Section CC



First floor plan



The bed is placed on multiple platforms on top of each other to show the idea of layers similar to the printing process



The platform and sofa is also a part of the staircase, making it seem like it's all a continuous object, similar to a 3D printed object

Some of the storage units underneath the stairs are open and some are enclosed, to provide different storing or displaying options



Terrazzo tiles wrap up onto the walls, reflecting the idea of continuity taken from the printing process

Bespoke shower set and orange glass frame mirroring the shade of the heated up nozzle

