

"Walnut"

This project is perfect for this category because *it is a Social space that will help the community to grow, allow all deaf/ hard hearing residence and those struggling to communicate (Aphasia disorder), to feel at home.*



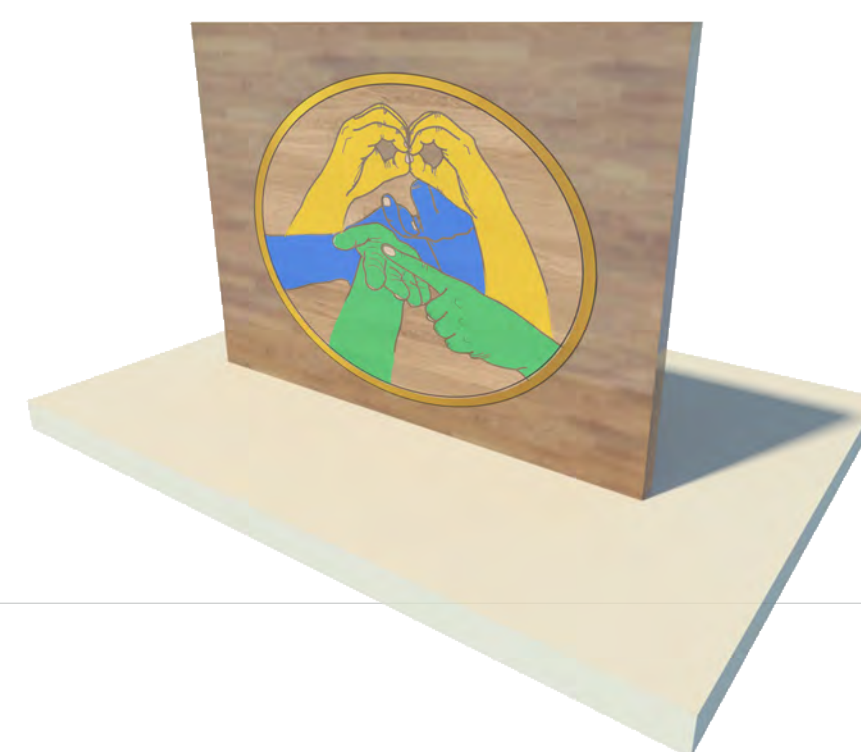
For us it is normal to enter a social space knowing that we will be able to communicate and understood by anyone at any point with no struggle.

But... what about those that were born with disabilities? Can they enter a space unaccompanied and feel safe?



What barriers do deaf people face in society?

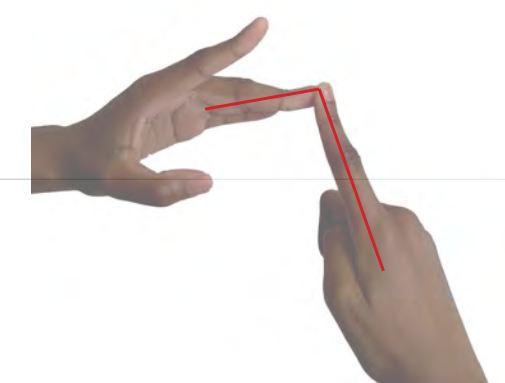
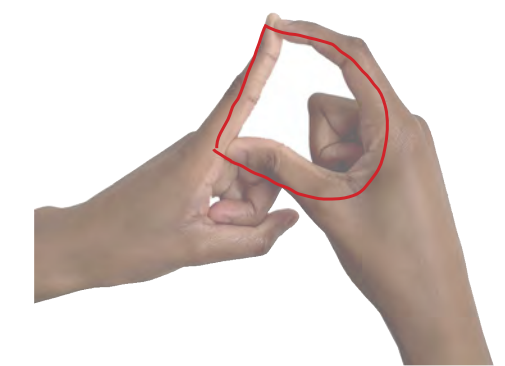
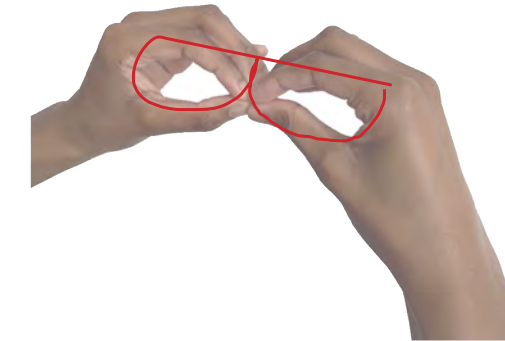
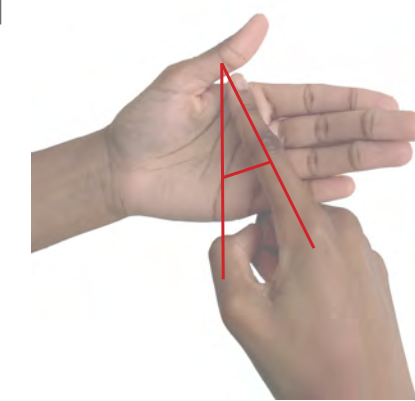
- fewer educational and job opportunities due to impaired communication;
- social withdrawal due to reduced access to services and difficulties communicating with others;
- emotional problems caused by a drop in self-esteem and confidence.



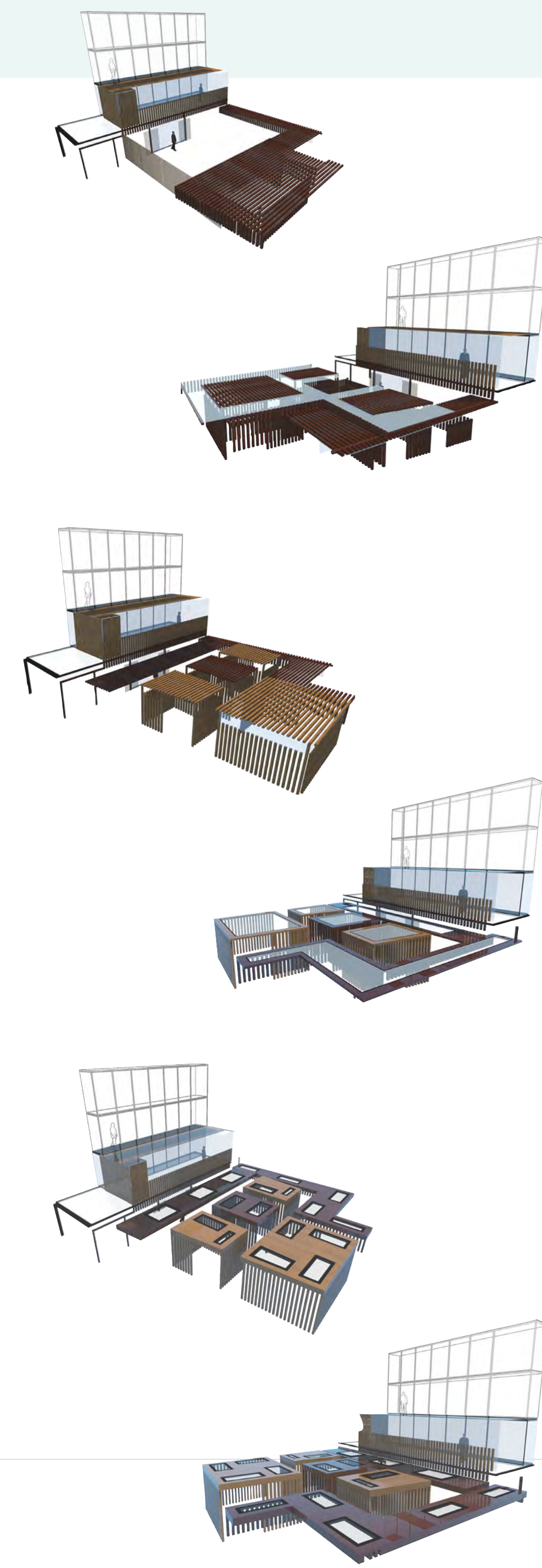
9 million
67.33 million
151 thousand

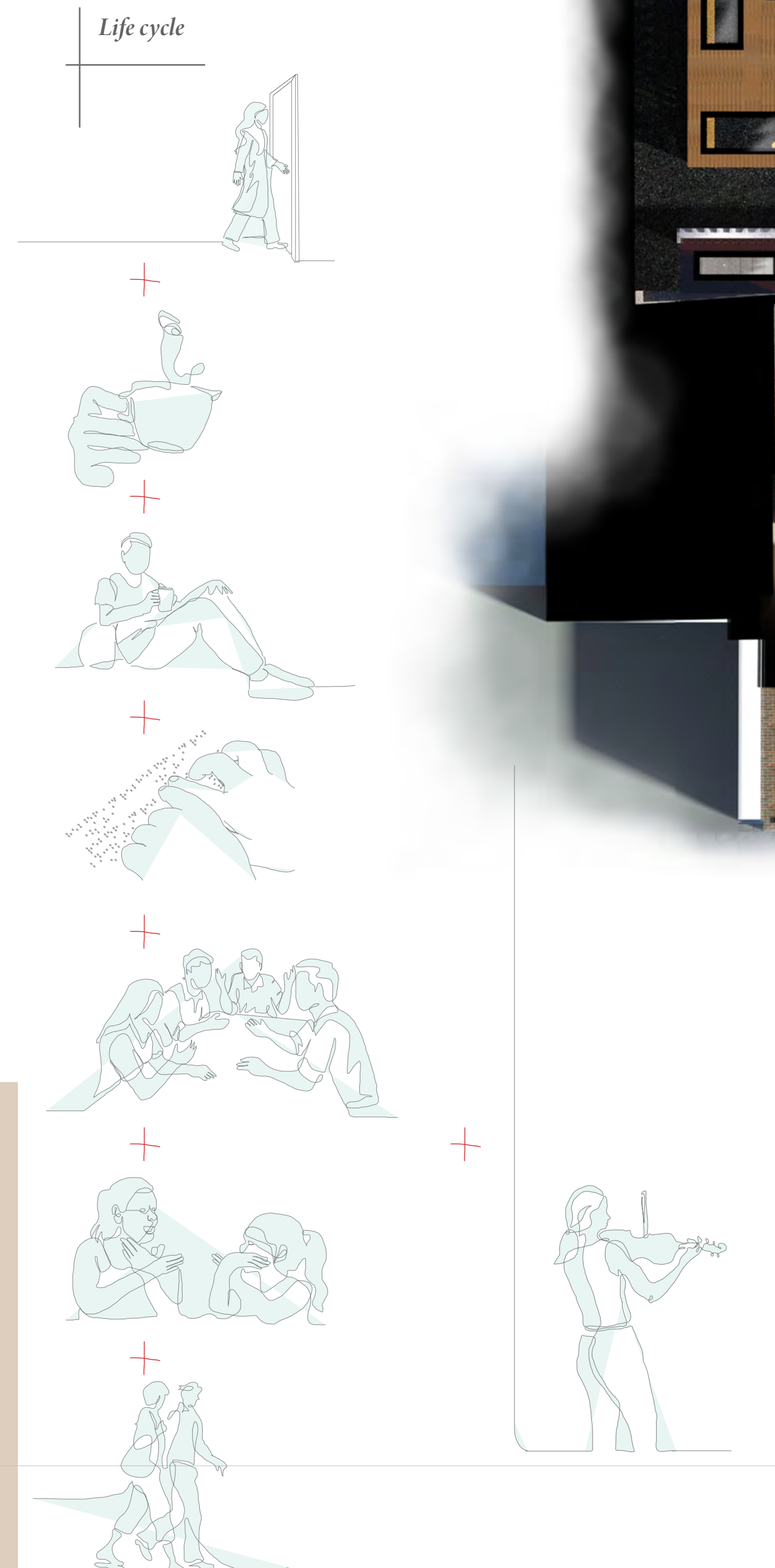
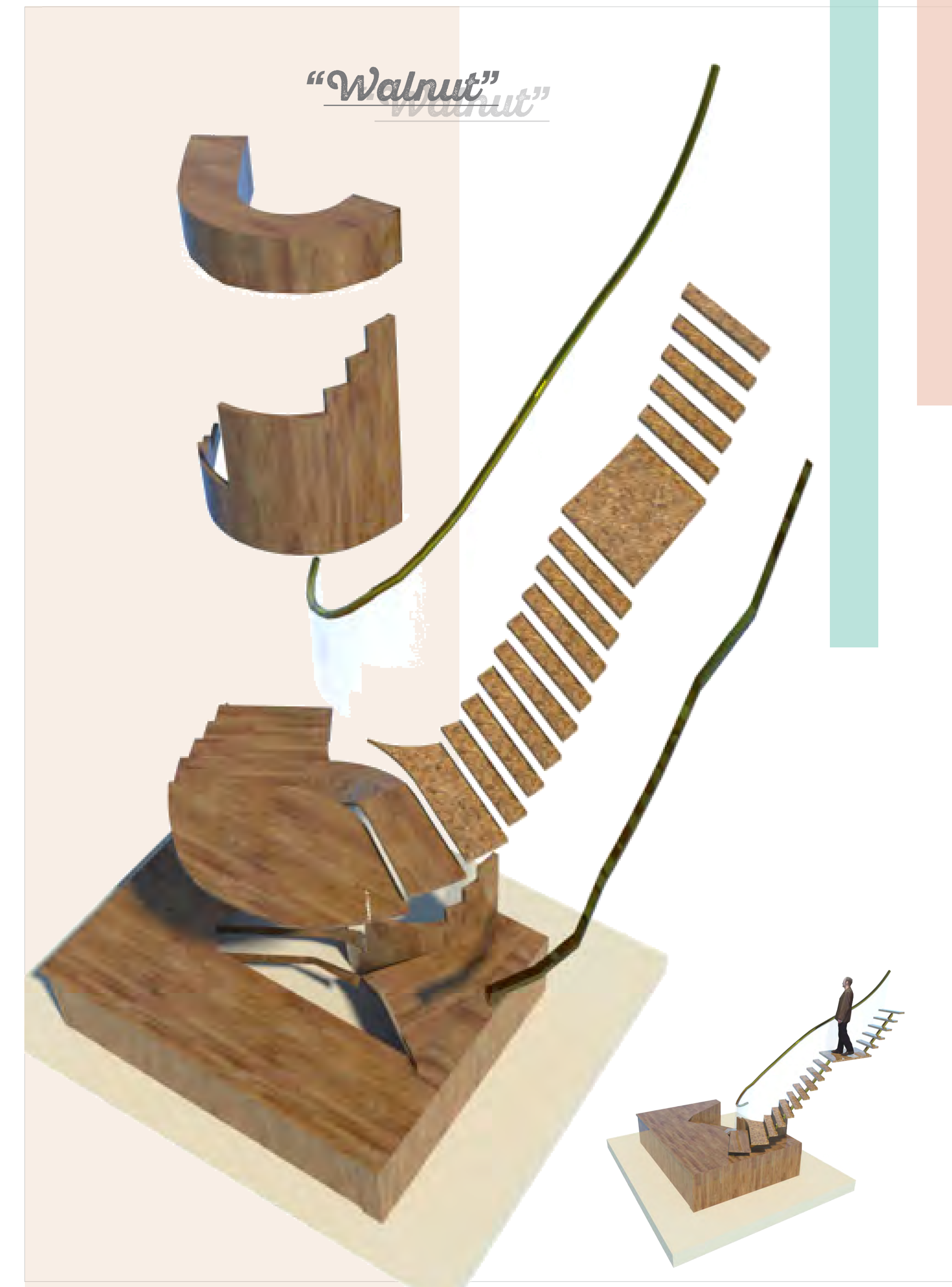
- The UK
- Deaf people
- BSL/ Braille

Body signal



OUTDOOR TERRACE





OUTDOOR TERRACE

