

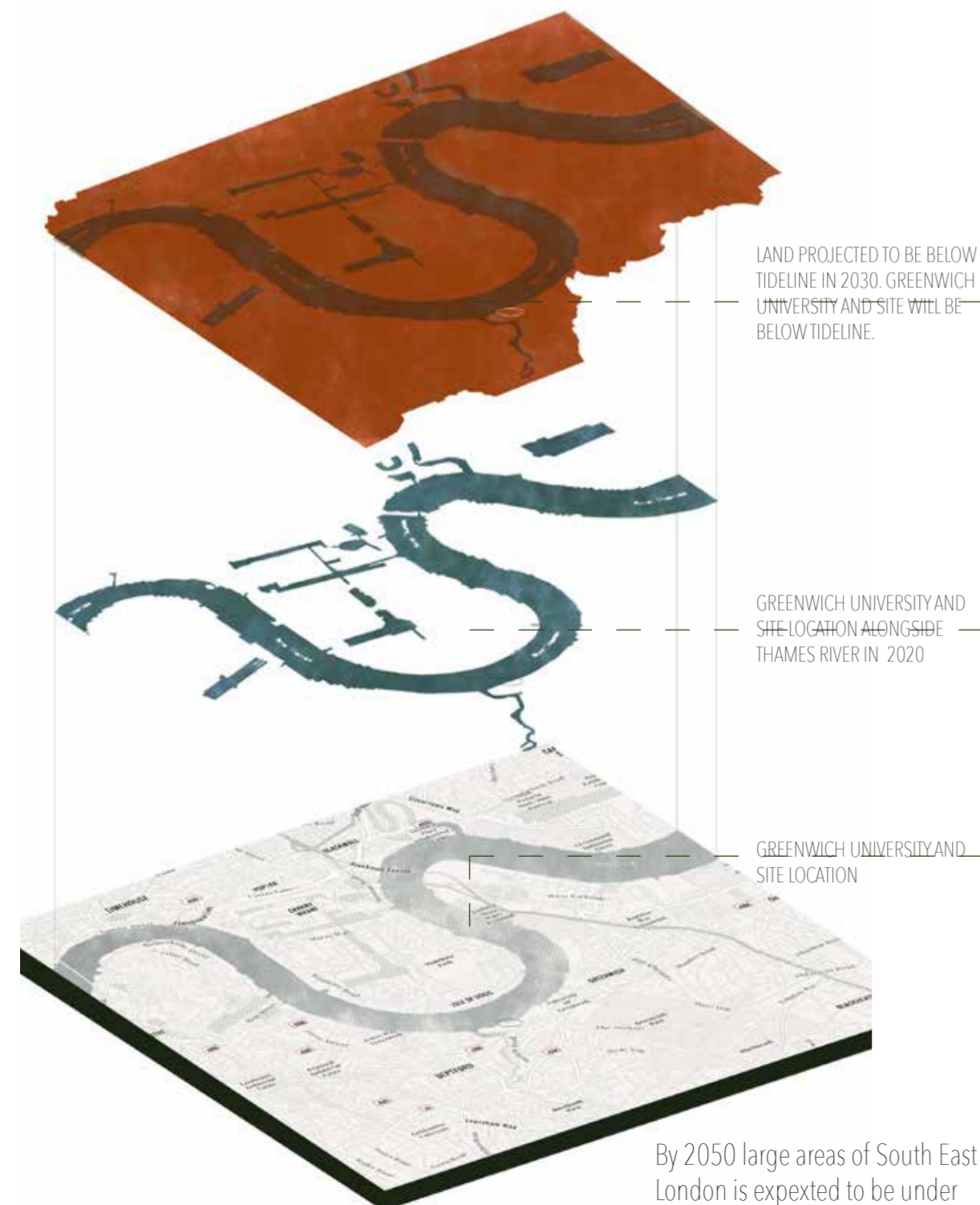
GREENHOUSE - CLIMATE CHANGE EDUCATION CENTRE

PROJECT BRIEF: To design an education centre for students studying subjects surrounding climate change at Greenwich University. Designing an educational community space where the young climatologists can research, learn and study alongside explore the importance of their subject. The space aim to include an educational space that promotes the importance of climate change to a climate change denier and the passive allies.

Greenwich University has many degrees which focuses on the science of climate change. The subject that climatologists and other sciences students' study are important to the future and therefore the university representatives have asked for a educational space which allows their students to study and get engaged with their subject which enables them to further engage with their studies and prepare for their future research.

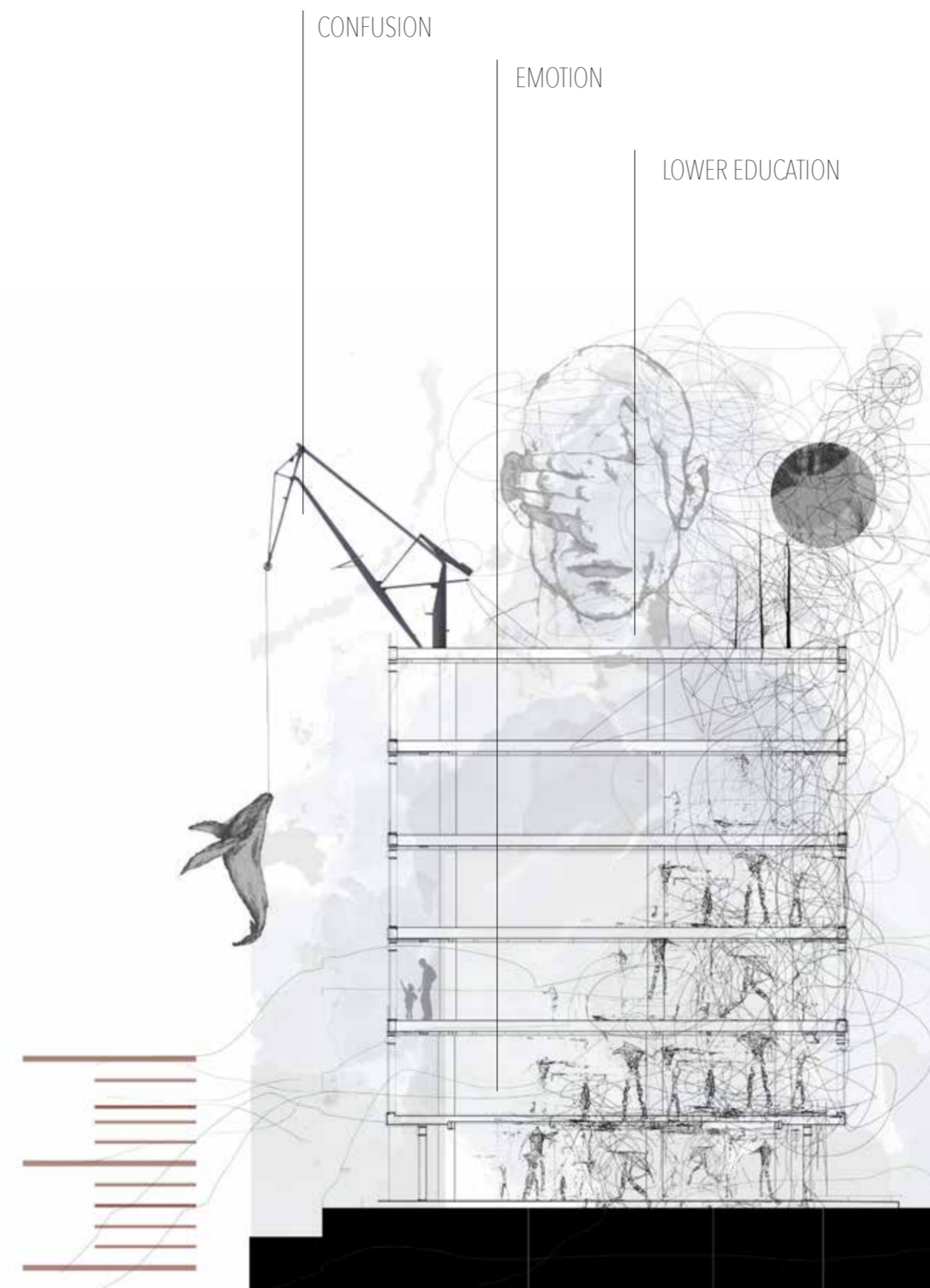
Alongside being a research centre / educational space for the students the space will contain experiential design features that allow the climate change student and climate change denier to interact with the subject of climate change.

The site is situated in Greenwich, southeast London. In close proximity to the university. The site is known for its contributions to English nautical and astronomical scientific history and has quite a few sites in this area, dedicated to allowing visitors to experience and learn about the past. Greenwich's history is significant in nautical and astronomical discovery.

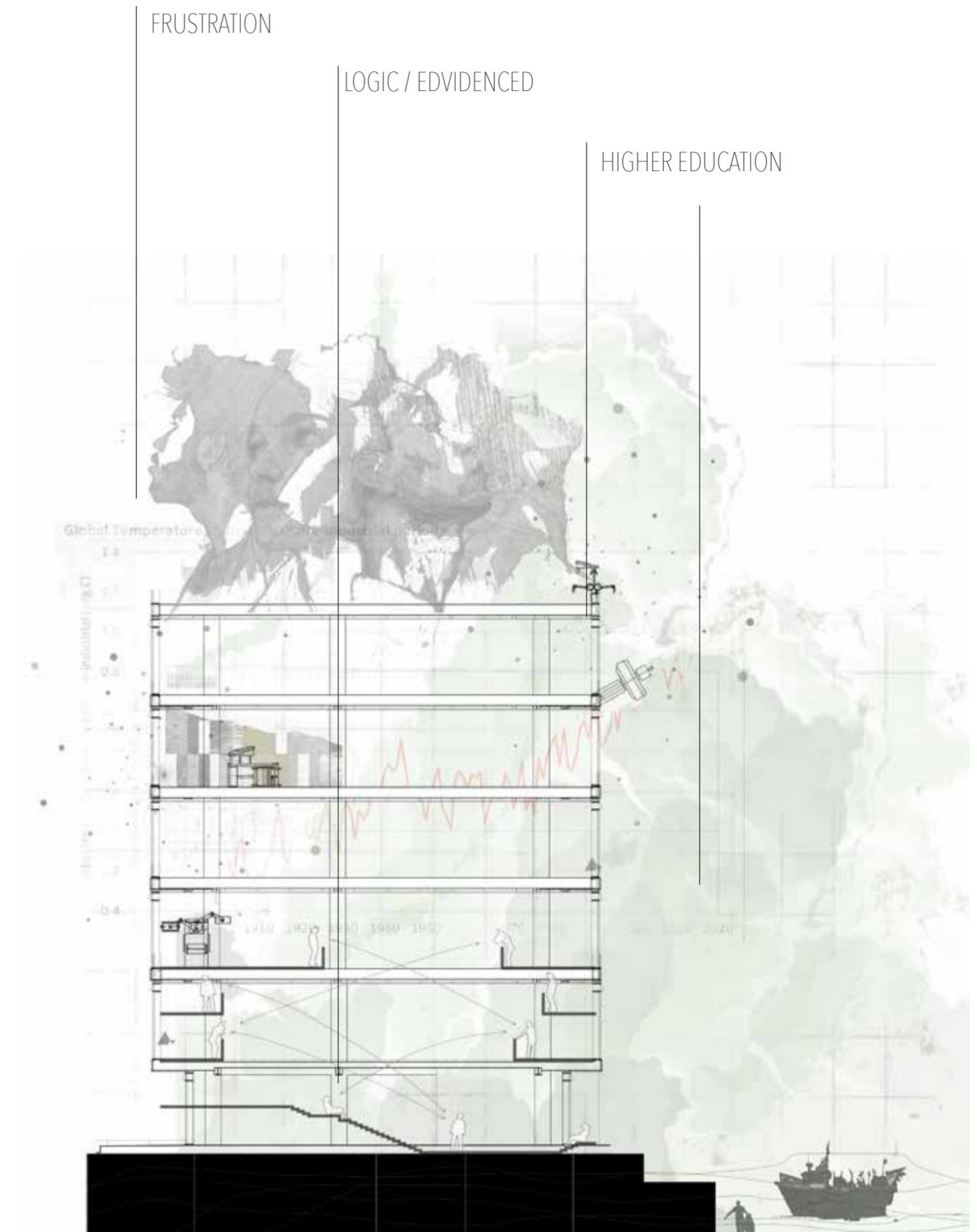


By 2050 large areas of South East London is expected to be under water due to the rising sea levels.

THE CLIMATE CHANGE DENIER AND THE PASSIVE ALLIES



THE CLIMATOLOGY STUDENTS AT GREENWICH UNIVERSITY



HOW DO YOU CONVINC SOMEONE THAT CLIMATE CHANGE IS REAL?

A question I asked myself while researching this project. Even with wildfires, hurricanes, rising sea levels and as Qatar starts to air condition its outdoors from scorching heat. Some continue to "not believe" in climate change.

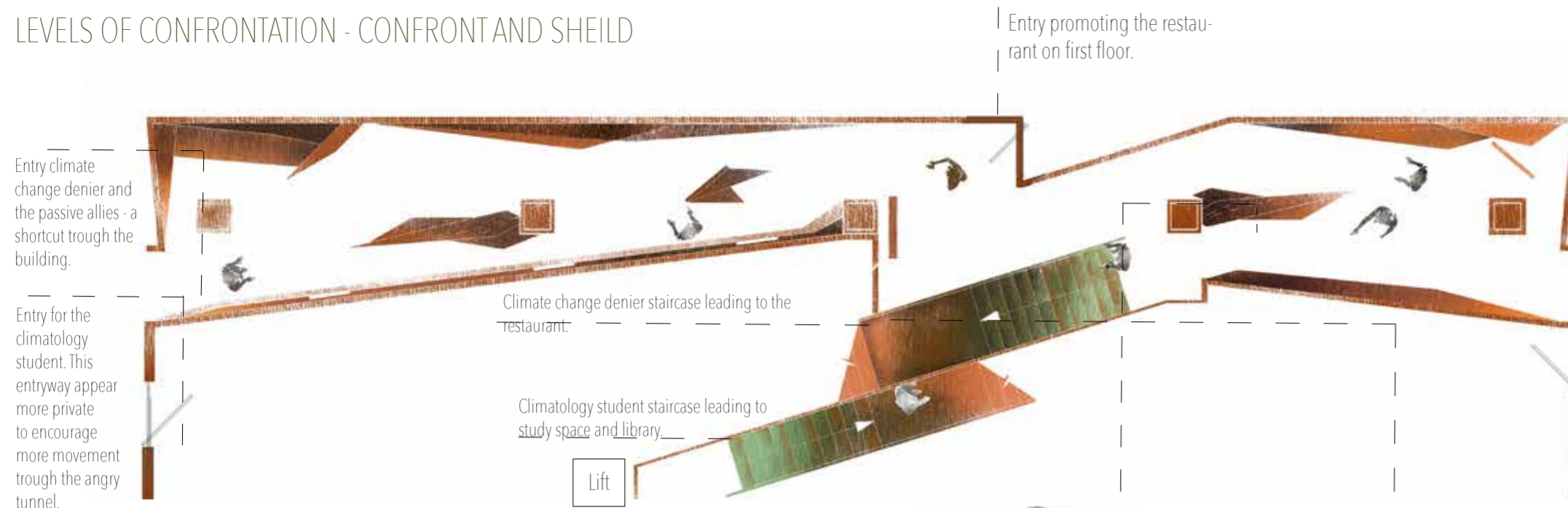
Should we display the latest Intergovernmental Panel on Climate Change report? Share gut-wrenching facts on the mass extinction of species? Offer statements from trusted medical organisations? None of this would have been very effective. Research shows that presenting scientific facts, the "information deficit model" of communication is often not effective in changing deeply held beliefs about climate change.

And so instead I looked back into my previous research on adaptive reuse in museums where I was investigating the potency of the existing shell in a museum / exhibition, where the analysis concluded that the context within an exhibition, which connect the visitor to the subjects significance are more likely to affect the visitor and provide them with a want to learn more about the subject portrayed.

And so, by creating a space that exhibits the concerns of climate change, the climate change denier is more likely connect to the subject and be intrigued to learn more about the subject and their beliefs.

Although the space is containing two separate opinions the concept is not based around the two visitors having a conflict with each other, rather that the space allowing the student connecting to the subject they are studying and the climate change denier connecting to climate change, and the contrast between them. The space aims to allow the visitors to be aware of the two separate opinions and allow that to encourage curiosity surrounding the subject leaving the visitor with a want to further explore the subject of climate change and further educate themselves.

LEVELS OF CONFRONTATION - CONFRONT AND SHIELD

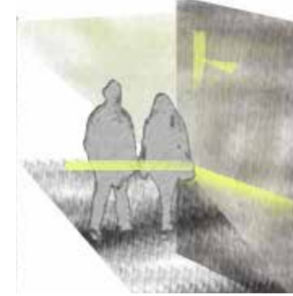


In the tunnel the corten material finishes decays further the closer the middle the visitor moves.



The copper staircase provides the visitor with a sense of the escape, the further up you go the less eroded it is. Leading the visitor to the restaurant which provide a place for reconciliation.

The angry tunnel is from the exterior portrayed as a shortcut trough the building - by provoking curiosity the visitor is taken trough the educational exhibition that allow the visitor and the climate change denier to connect to the reality of climate change by being able to interact with what the exhibition exhibits. The materiality of the tunnel is eroded and decaying to emphasise a contrast between the climate change denier and the students spaces within the interior. The space that the students use within the interior has a sustainable, modern and contemporary look and feel. The staircase in the middle of the tunnel provide the climate change denier an escape from the confrontation in the angry tunnel and lead him/her to the restaurant which provide a place for reconciliation.



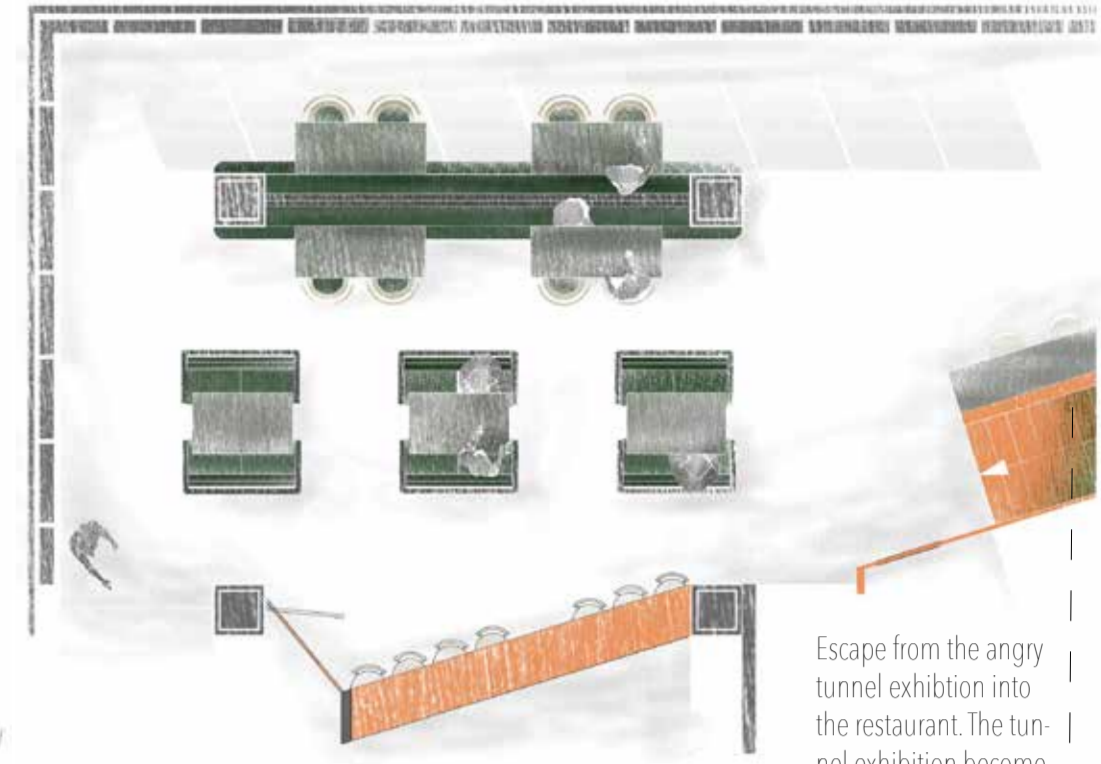
Inside exhibition a laser project onto the visitor and the exhibition the expected water levels in the building within 10 years time.



The first confrontation - the interior aims to allow a sense of confrontation within the space between the students and the climate change denier. The two staircases therefore share handrail on the landing where they meet.



As part of the development I sourced some algae and seaweed to further the research. By trying to rehydrate the dried seaweeds and algae I was inspired by shapes, translucency, and colour for the restaurant.

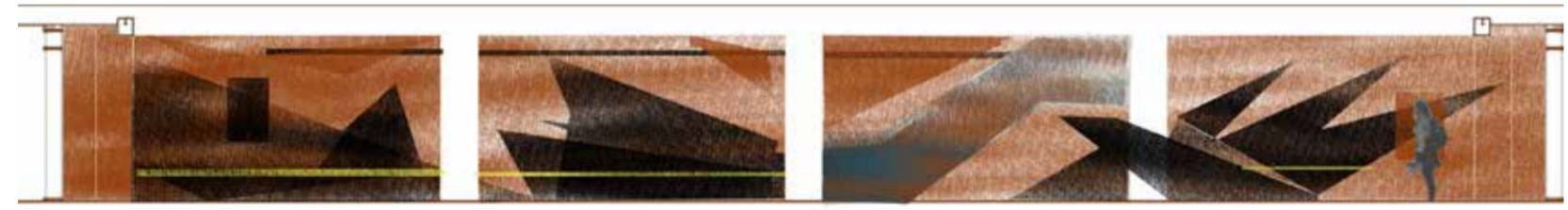


Escape from the angry tunnel exhibition into the restaurant. The tunnel exhibition become a exiting entryway with context and purpose to the restaurant.

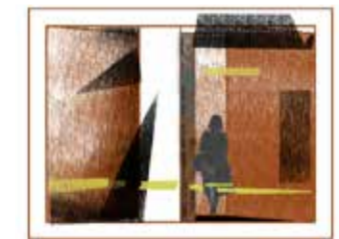
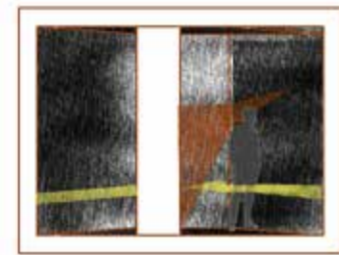
As a way to bring the climate change denier into the space, a restaurant within the interior could encourage more visitors to visit the space. In my research for this project I came across many articles and studies that tried to anticipate or predict the "future of food" as there is a definite certainty that the way we import, farm and produce now, is not sustainable for our environment. And so in these studies there were a lot of suggestions of incorporating more algae and seaweed into our daily diet as it is much more sustainable, it can be produced / farmed locally and it also contains important vitamins such as omega-3. And so I started further developing a concept of a futuristic foods restaurant within the site which is similar to a seafood or oyster bar however the food is based around different types of seaweed and algae and allowing visitors to experience what futuristic foods might be like.



Inside exhibition a laser project onto the visitor and the exhibition the expected water levels in the building within 10 years time. Projectors display parts of the exhibition on the corten surfaces. Developing an idea of an escape from the building leading the visitor further into the space, allowing them to educate themselves further.



Further development of the space allowed the escape to be the entry to the restaurant on the second floor. Having the tunnel as an entryway to a climate conscious / sustainable restaurant could provide an additional experience to the meal.



Hinting that there is something/someone on the other side. Provoking curiosity and want to explore the space further.



Private space. Exploring the idea of having closed off spaces within the site. Some places you could see someones feet.



Separating the students and visitors by having different pathways within the space.



A space where the visitors come together. The private and public spaces are separate, however some of the spaces can be shared to connect the community together.



Being aware that there are other routes within the building. Provoking curiosity and want to explore the space further.



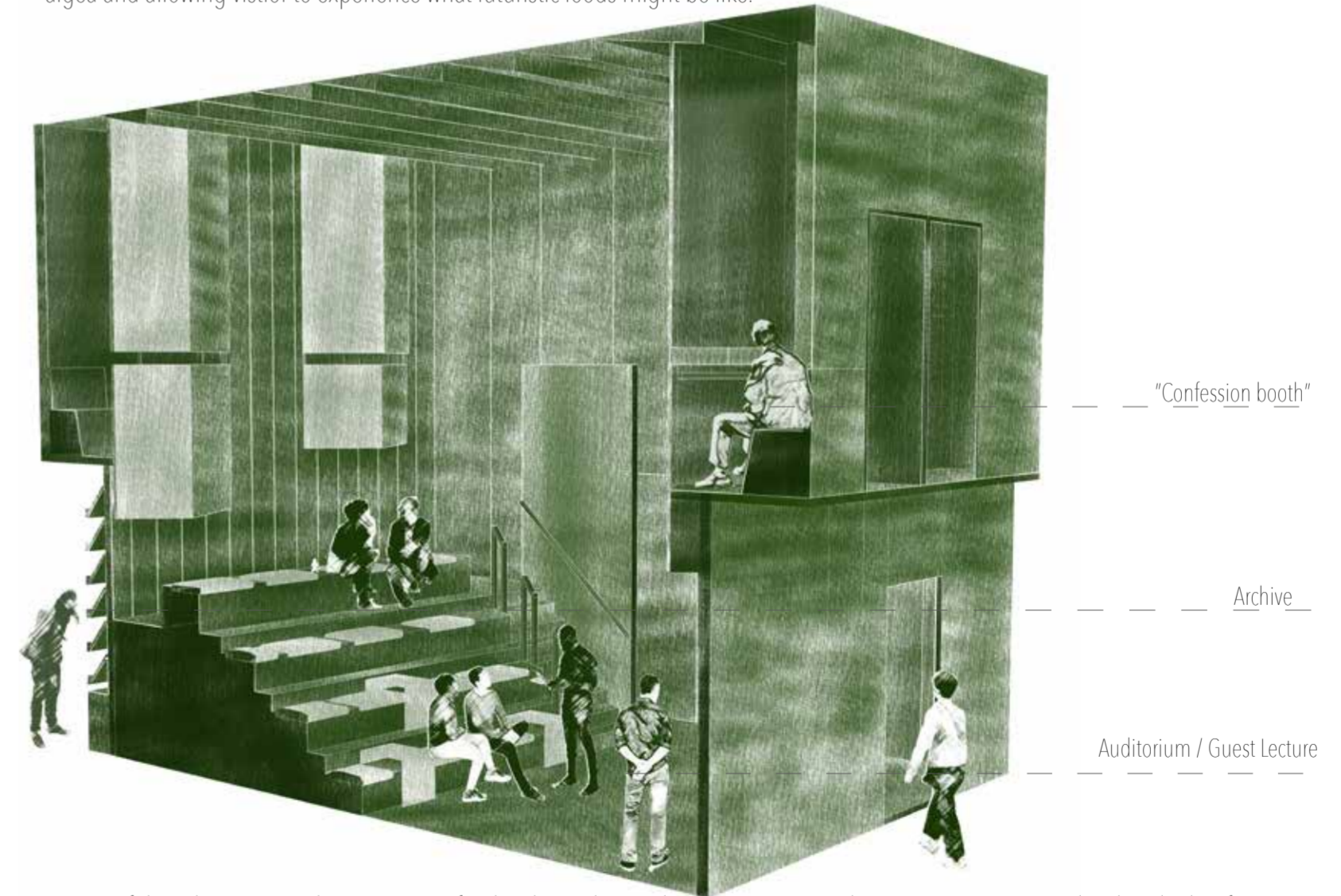
Exploring the possibilities of using semi-transparent materials to give a hint of what to explore.



The space allows for exploration and connection to the subject of climatology. By providing context the visitors are more closely connected to the subject. Allowing spatial hints that there is something behind.



Some spaces within the interior will aim to shield the visitors as well as confront.



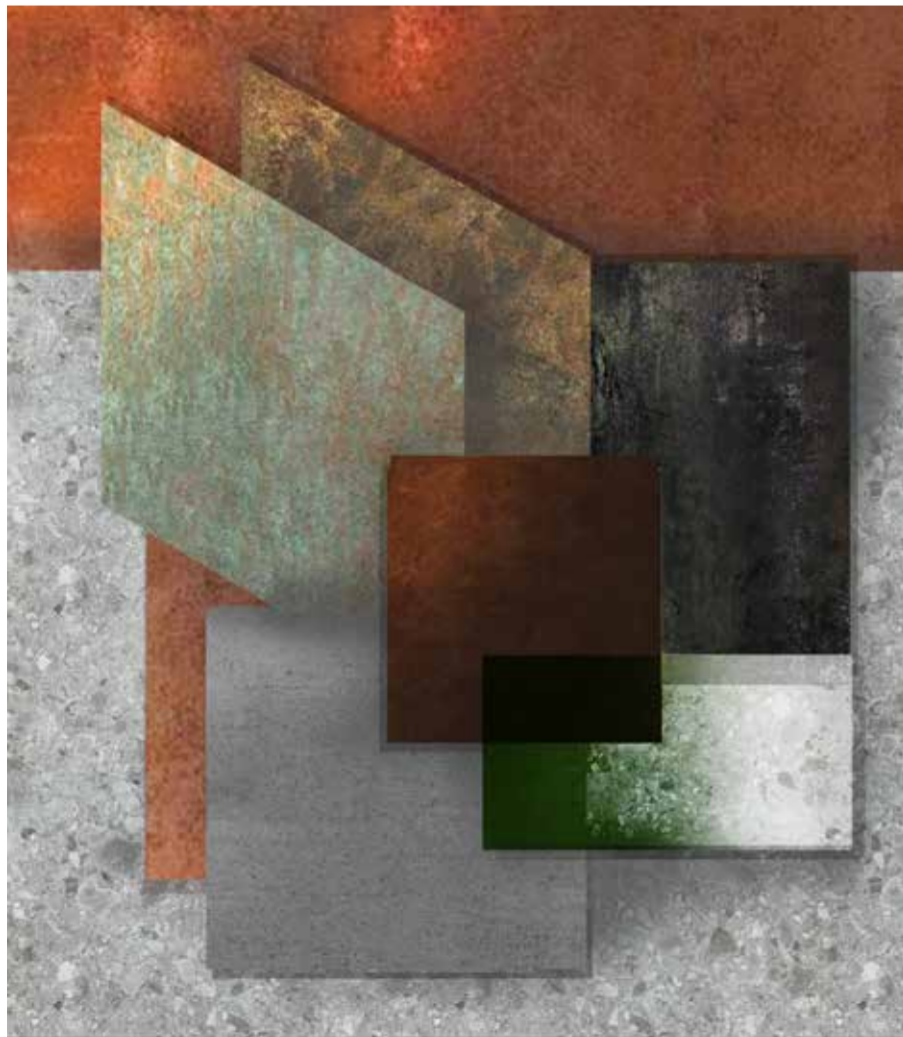
As part of the scheme an auditorium space for the climatology students to go to guest lectures etc was required within the brief. The development led to an inserted space that had an inside and outside purpose. On the outside ground floor level parts of the auditorium insertion is an archive display of climatology research that the visitors can explore. On the inside it is the guest lecturer space. On the first floor outside of the auditorium it is a library space and four "confession booths" that are for the climate change denier to explore and use to educate themselves further on climate change without being confronted as they are doing so. The booths are enclosed spaces for one person that has a seat and table and allows the visitor to peek down to the auditorium as well as listen to the lecturers.

GUEST LECTURE SPACE



The separation between the visitors within the space provokes curiosity and promotes the contrast between the visitors and their thoughts on climate change. The spaces aim to educate and contribute to learning not only for the climatology students from Greenwich University but also encourages and promotes education for the climate change denier and the passive allies and allows them to connect to the subject with different levels of confrontation as they move around the space.

EXHIBITION TUNNEL

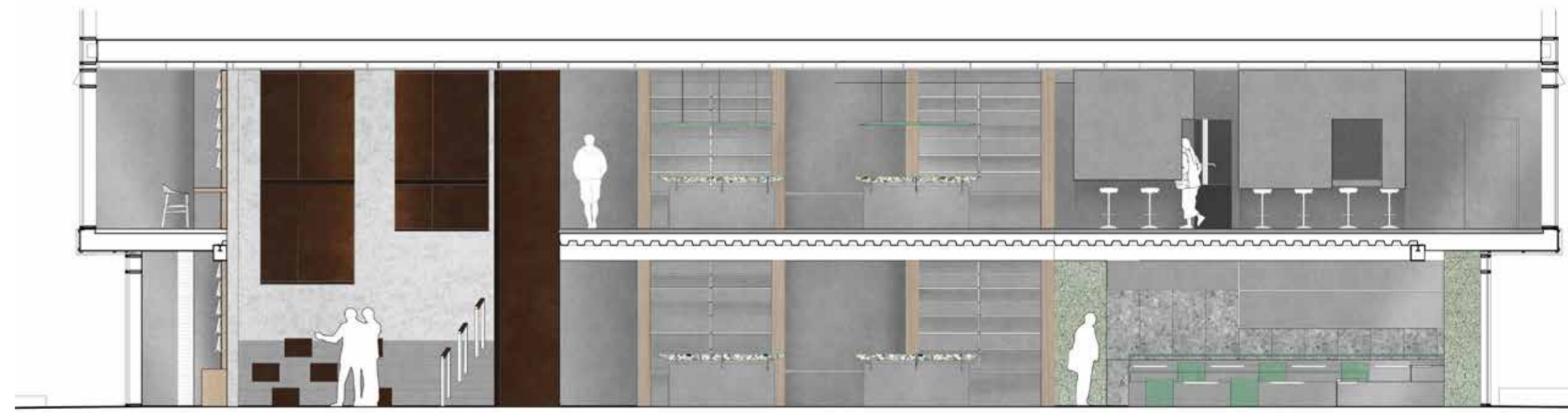


Materials used in the climate change denier spaces.



Materials used in the climatology students spaces.

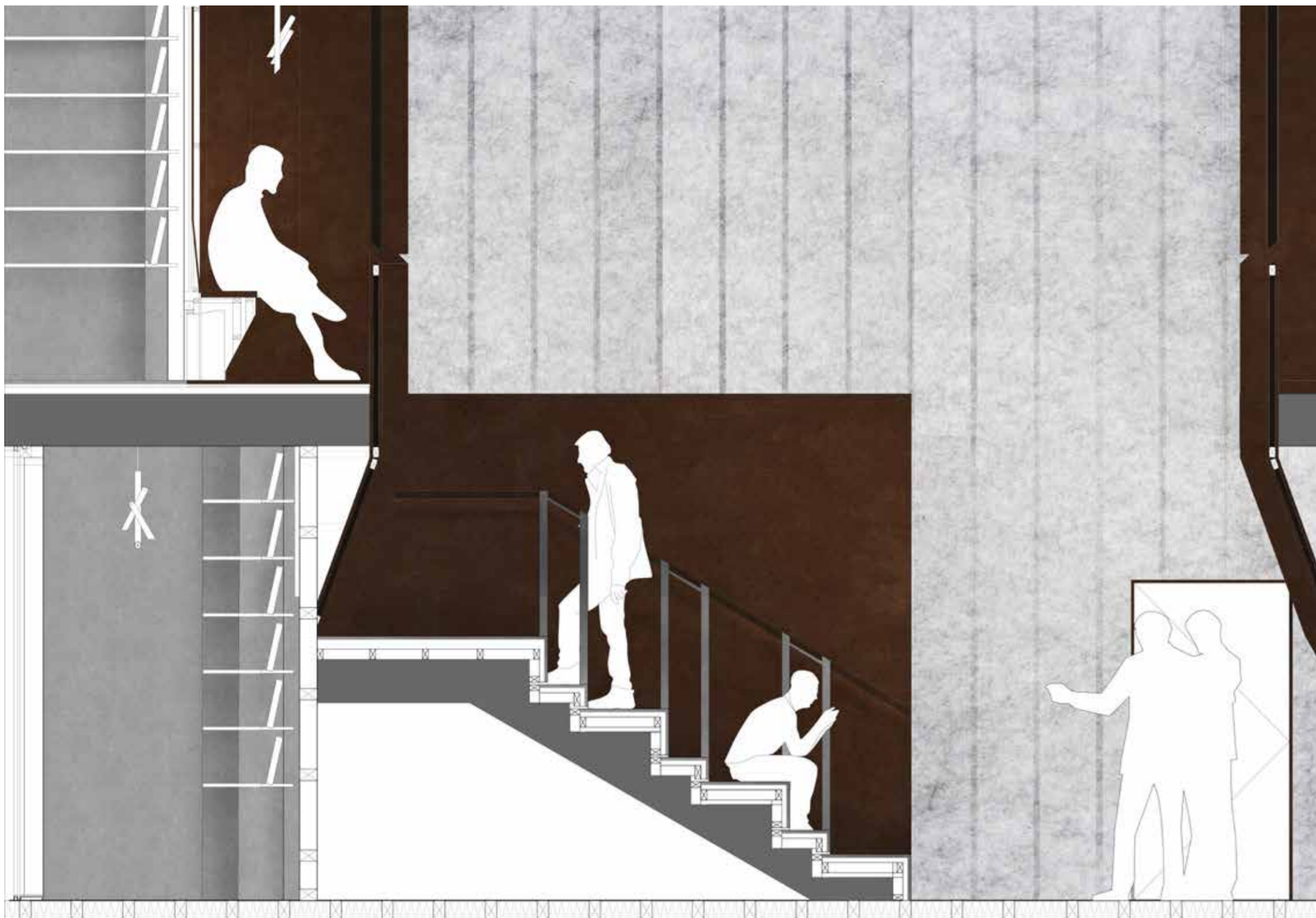
To enhance the contrast between the two different visitors the materials chosen are contrasting of each other. The materials used in the spaces the climate change denier circulates are eroding / dematerialising and the materials in the student spaces are sustainable and have a more polished feel.



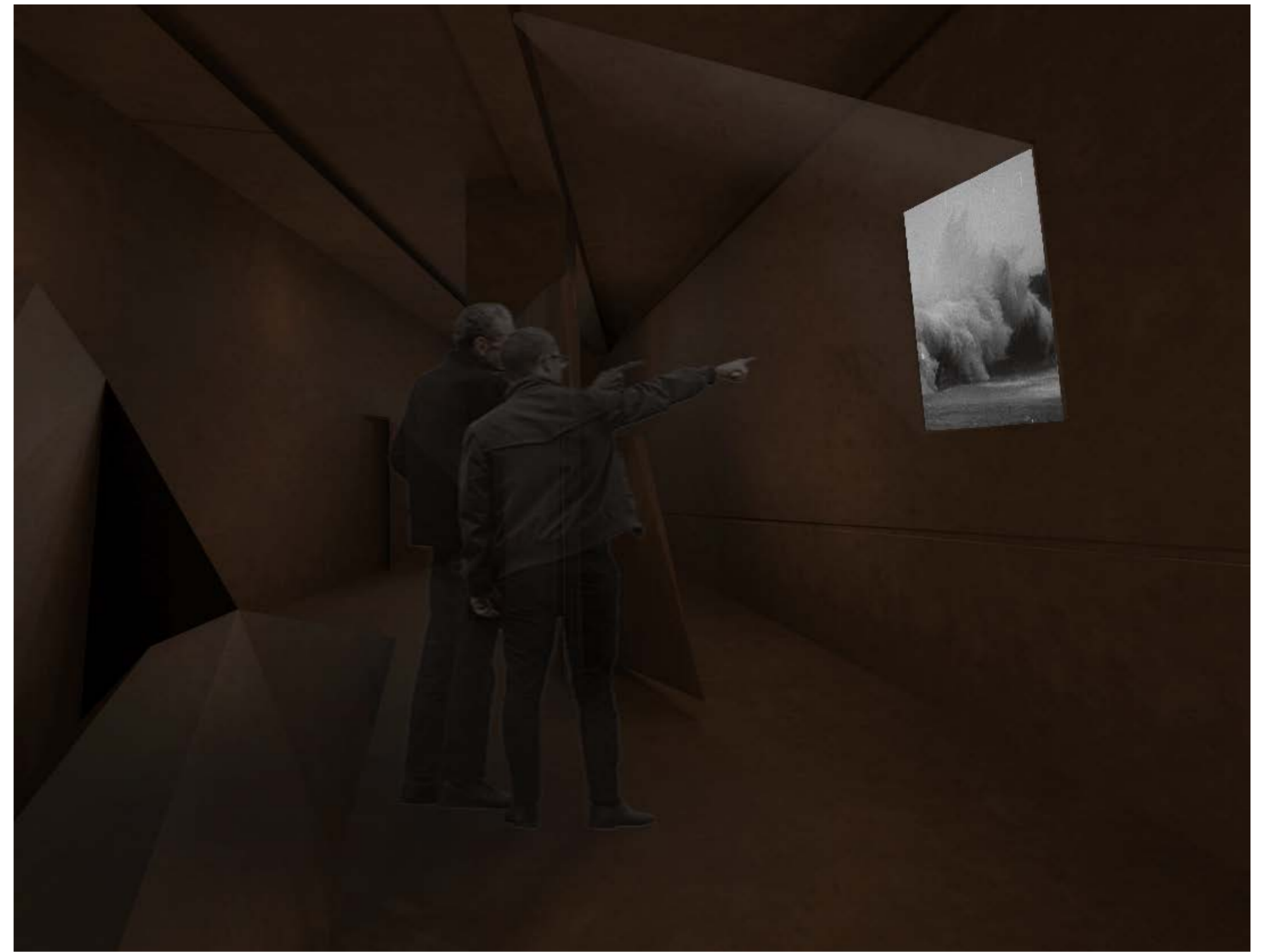
Section through the Greenhouse student spaces.



Section through the Greenhouse education exhibition tunnel and restaurant spaces.



As part of the scheme an auditorium space for the climatolgy students to go to guest lectures etc was required within the brief. The delvelopemnt led to an inserted space that had an inside and outside purpose. On the outside ground floor level parts of the auditorium insertion is a archive display of climatolgy reseach that the vistoris can explore. On the inside it is the guest lecturer space. On the first floor outside of the auditorium it is a library space and four "confession booths" that are for the for the climate change denier to explore and use to educate themselves further on climate change without being confronted as they are doing so.



Click on image for animated sequence.

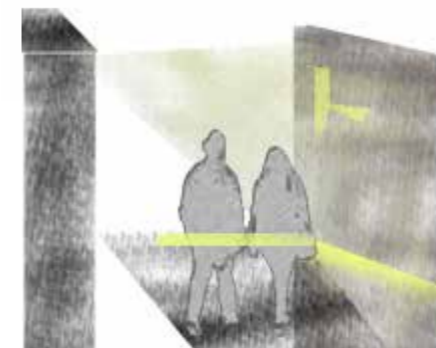
The angry tunnel is from the exterior portrayed as a shortcut trough the building - by provoking curiosity the vistor is taken trough the educational exhibition that allow the vistor and the climate chage denier to connect to the reality of climate change by being able to interact with what the exhibition exhibits.



The "angry tunnel" provide the person walking by with a shortcut trough the building, immersing them into the exhibition. The students entrance is more private.



Tide - mark illustrating the projected waterlevels within 10 years on to the facade.



Inside exhibition a laser project onto the vistor and the exhibition the expected water levels in the building within 10 years time.



The first confrontation - The two staircases therefore share handrail on the landing where theyre hands meet.



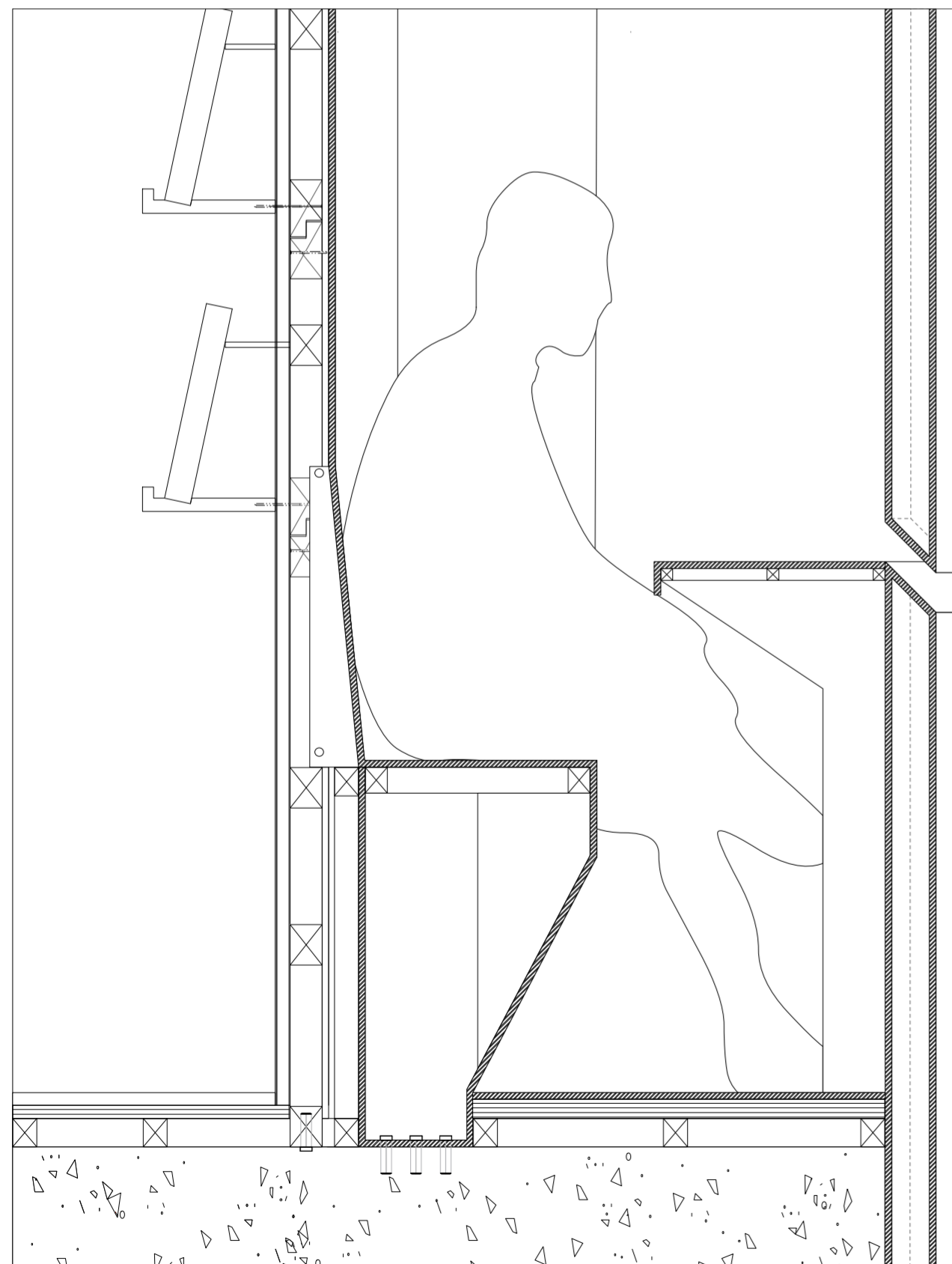
The first floor of the building provide the vistor with a view of the river and the cityscape. In the restaurant the coloured glass will be used on the windows.



The restaurant provide a place for reconcilation where the vistor can escape to from the angry tunnel. the seating is inspried by the idea of sheilding from confrontation. The benches provide sheilding from confrontati-on the people surrounding them.



Sectional visual of the Greenhouse. [Click on image for animated sequence.](#)



Detail: On the first floor outside of the auditorium it is a library space and four "confession booths" that are for the for the climate change denier to explore and use to educate themselves further on climate change without being confronted as they are doing so.



The new exterior allow visitors to connect to the idea of climate change in the city with a experiential tunnel that moves along with the tide. The tunnel rise up when the tide comes in. Elevation of the Greenhouse and Uneathed exhibition located next to each other.



The study spaces allow the visitors to explore and connect to the subject they are studying.



[Click on image for animated sequence.](#) Confrontation table with sliding mid panel. The restaurant places visitors on each side and when everyone is seated the panel is slid back and the visitor is confronted. During day it can be used as meeting space.