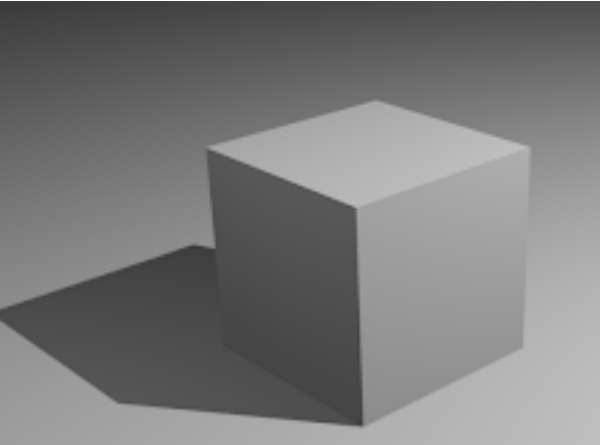
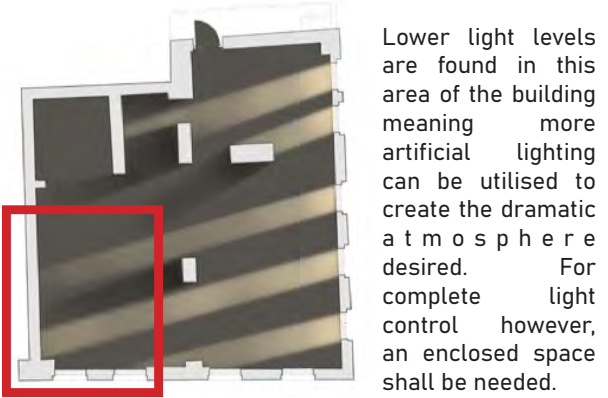
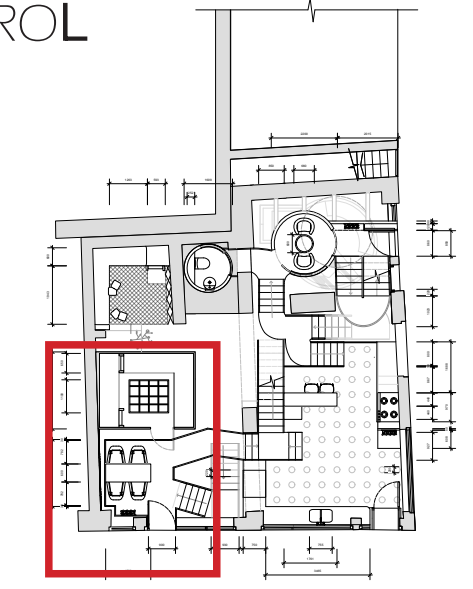


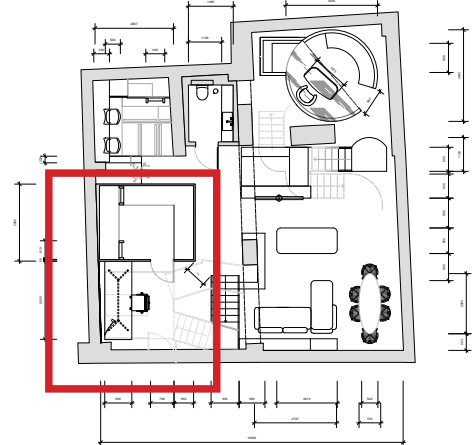
**ENCLOSED FOR LIGHT CONTROL
LIGHTING DESIGNERS SPACES**



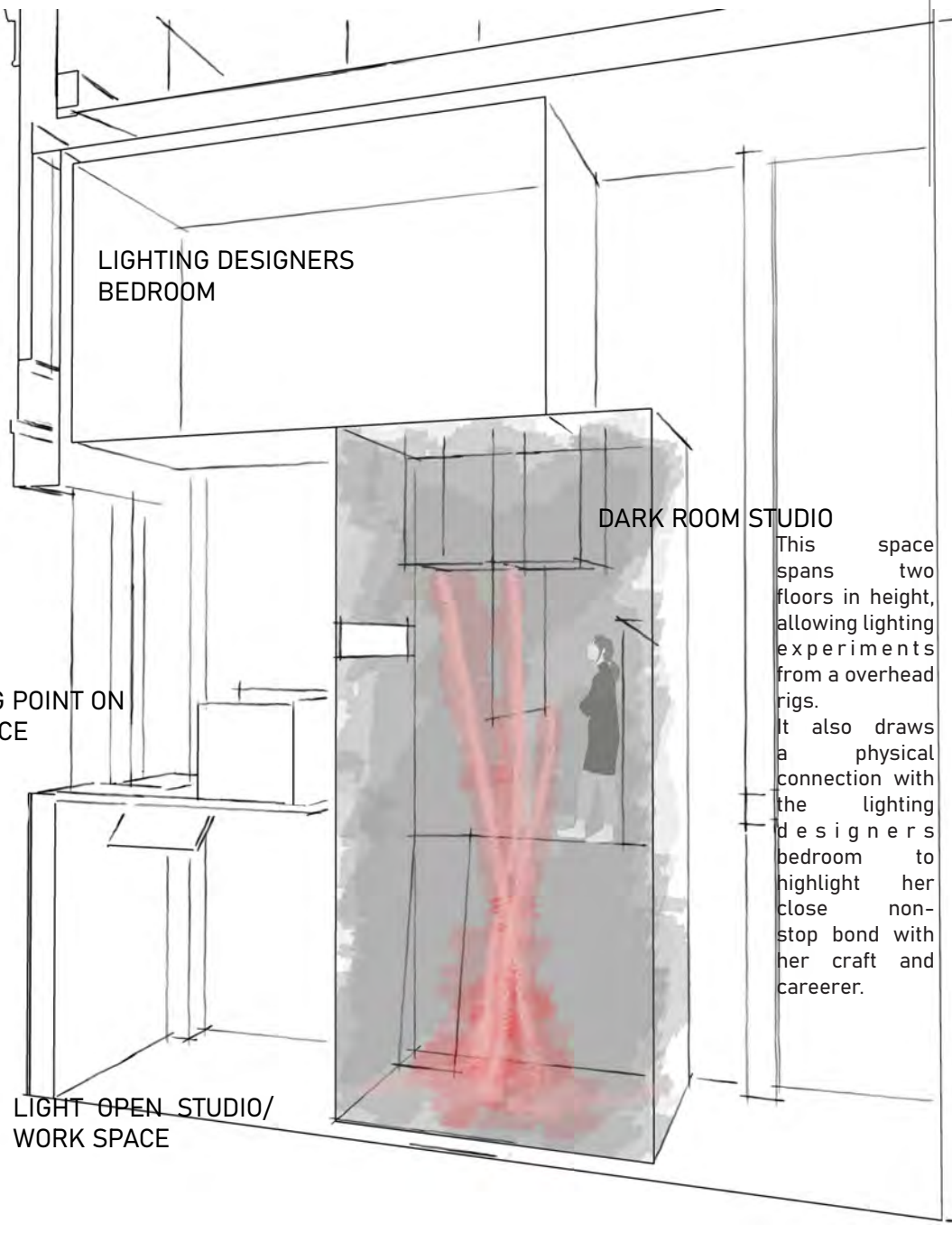
Angular harsh sharp shapes can be seen within this area, as this will create more dramatic clean cut shadow lines, with a more controlled and manipulated aesthetic. This represents the theatrical artificial light seen within her work.



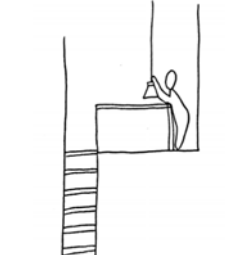
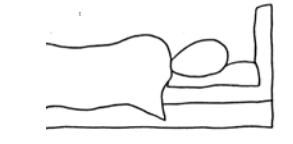
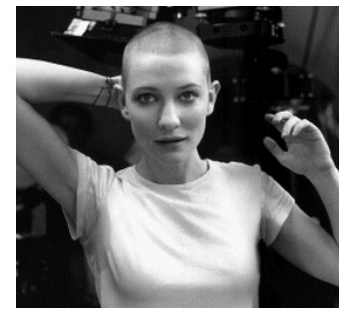
Here located on the ground floor plan you can see the lighting designers work spaces, including the meeting area, and controlled dark studio.



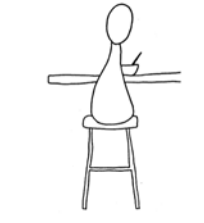
Here upon the basement plan you can see the light work space situated below the meeting area, flooring shall ensure light can travel down to this area.



A TYPICAL WORKING DAY -



Finally resting at the end of the day under the calming light of the lounge space.



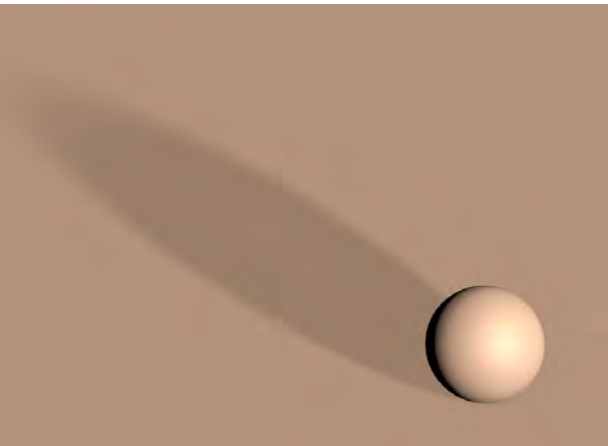
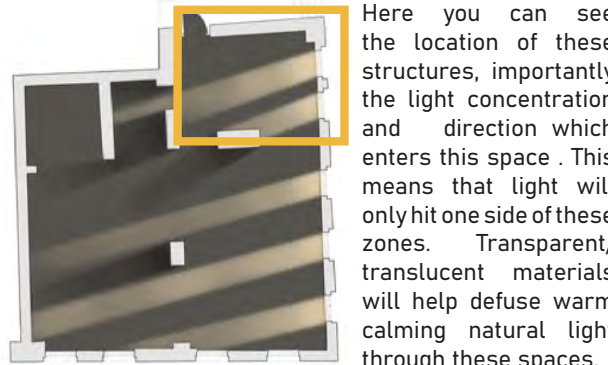
After a long days working she can then retreat to her communal spaces where she cooks and consumes her dinner. This is bright creative space after her time in the dark studio.

She shall begin work in her office space developing her projects, and possibly preparing for presentations later in the day.

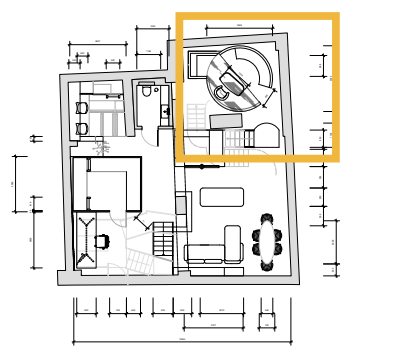
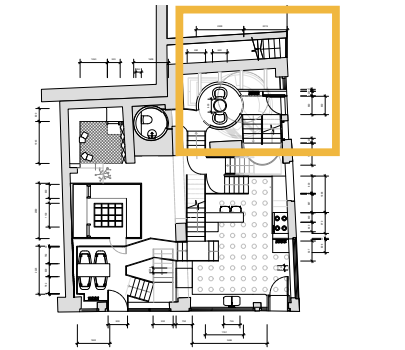
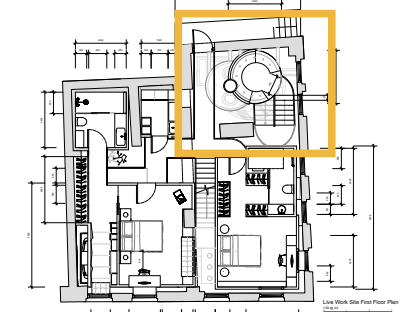
She can then move up stairs to the meeting space, where she can meet and inform colleges on her current projects and designs.

This space spans two floors in height, allowing lighting experiments from a overhead rigs. It also draws a physical connection with the lighting designers bedroom to highlight her close non-stop bond with her craft and careerer.

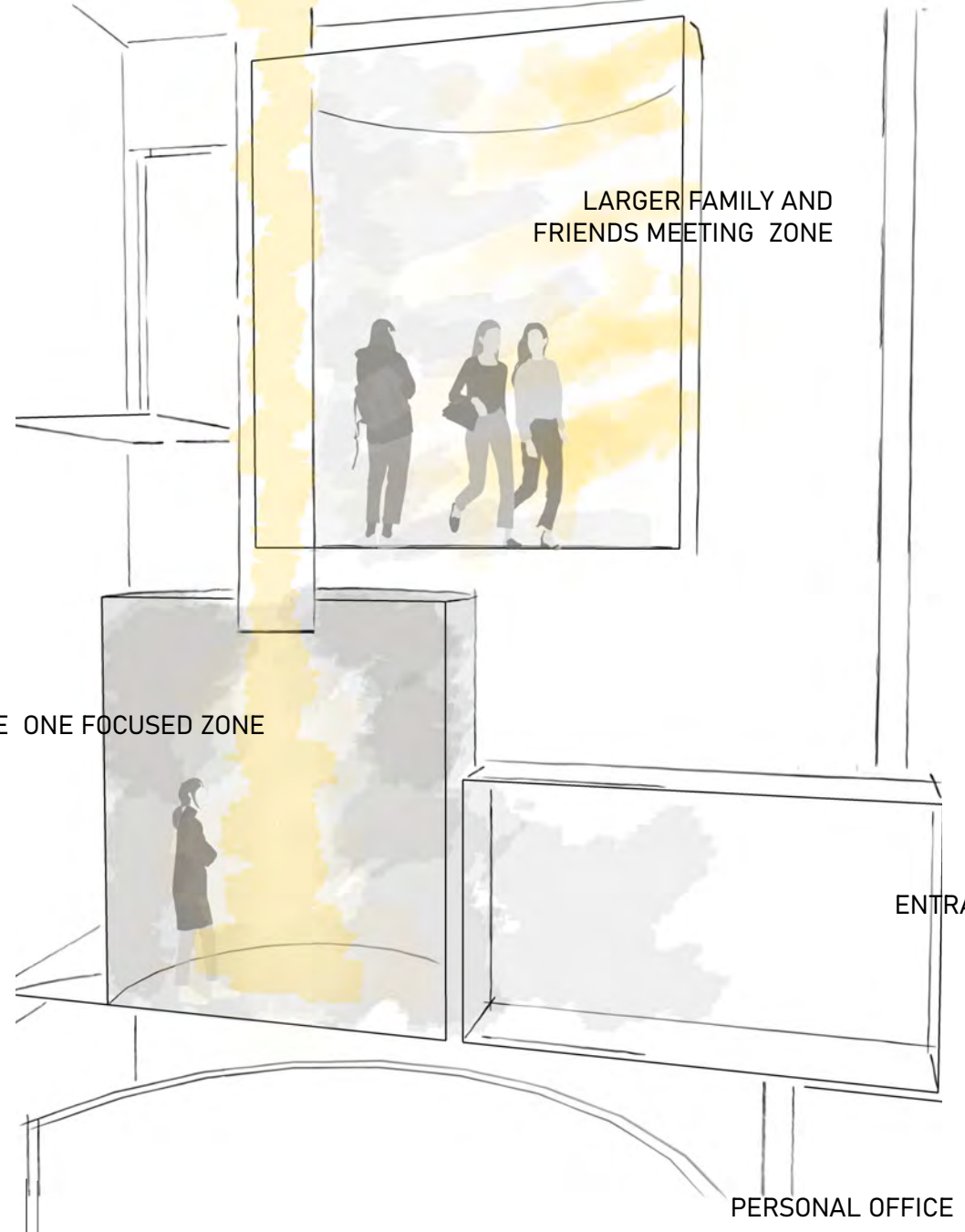
**CONCEALED FOR PRIVACY
BEREAVEMENT COUNCILLORS WORK SPACES**



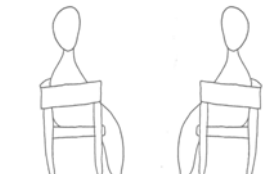
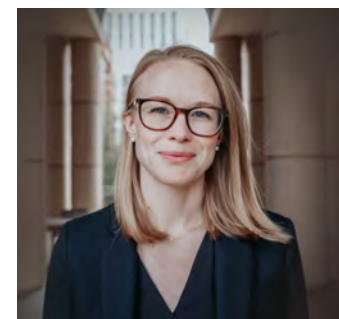
Rounded shapes will be used within this area of the building, This shall create more diffused shadows as the light wraps around the curved forms, this shall create a more natural and calmer aesthetic, than the dramatic harsh lighting seen previously.



Here you can see three different cylinder shaped spaces 'stacked' one on top of the other, all are enclosed to different degrees to ensure they have the confidential nature required.



A TYPICAL WORKING DAY -



After a long day she shall retreat back to the vibrant uplifting communal areas.

She shall organise herself and notes needed for her days meetings, retrieving files from storage within her office, in the basement.

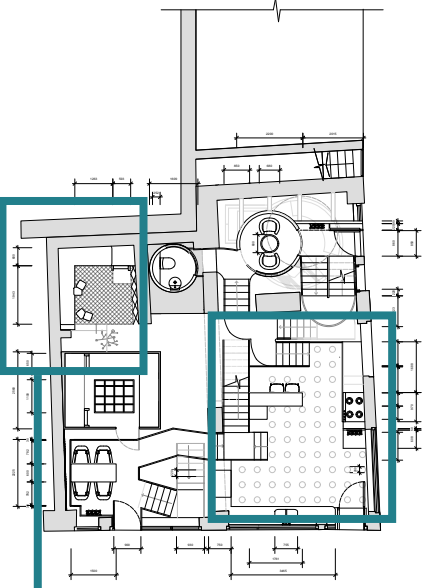
Clients shall arrive taking a moment before they enter either of the main meeting zones.

Some clients may be best suited to the one on one meeting area, a small focused area where full or parts of sessions can be held.

She shall then return to her office to file her reports and notes, whilst collecting what she needs for her next client

This separate entrance means clients of the councillor can enter the space any time, day or night and still receive the support needed, (without disrupting the rest of the space).

**BOUNDLESS FOR SENSE OF SPACE
A CREATIVE AND UPLIFTING ENVIRONMENT.**

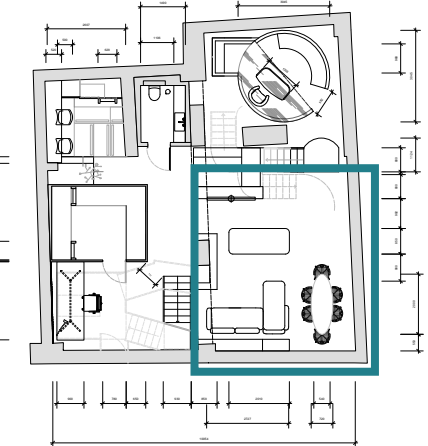


Here on the ground floor plan you can see a small playful communal spot which offers work space, storage and a net like lounging area. This space disregard the necessary but confining walls of each clients work spaces, instead possessing a free and youthful feel. This contrast and change is paramount in ensuring a each client can feel refreshed in their own way.

The lighting designer shall enjoy the use of colour and light techniques in this area as it shall offer inspiration to her work as a creative. On the other hand, this space shall be so drastically different to the councillors work space, it shall in fact act as a mental break from her work, uplifting her from the troubles she works with day to day.



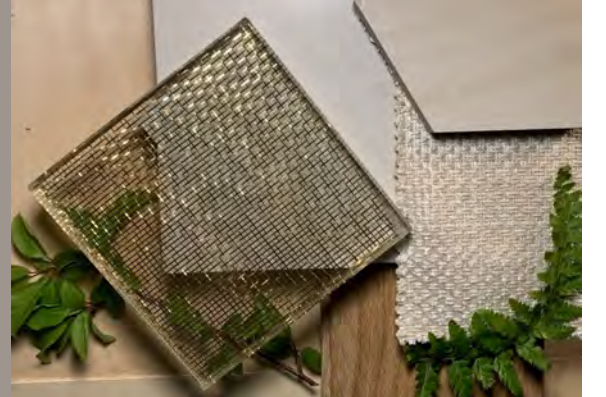
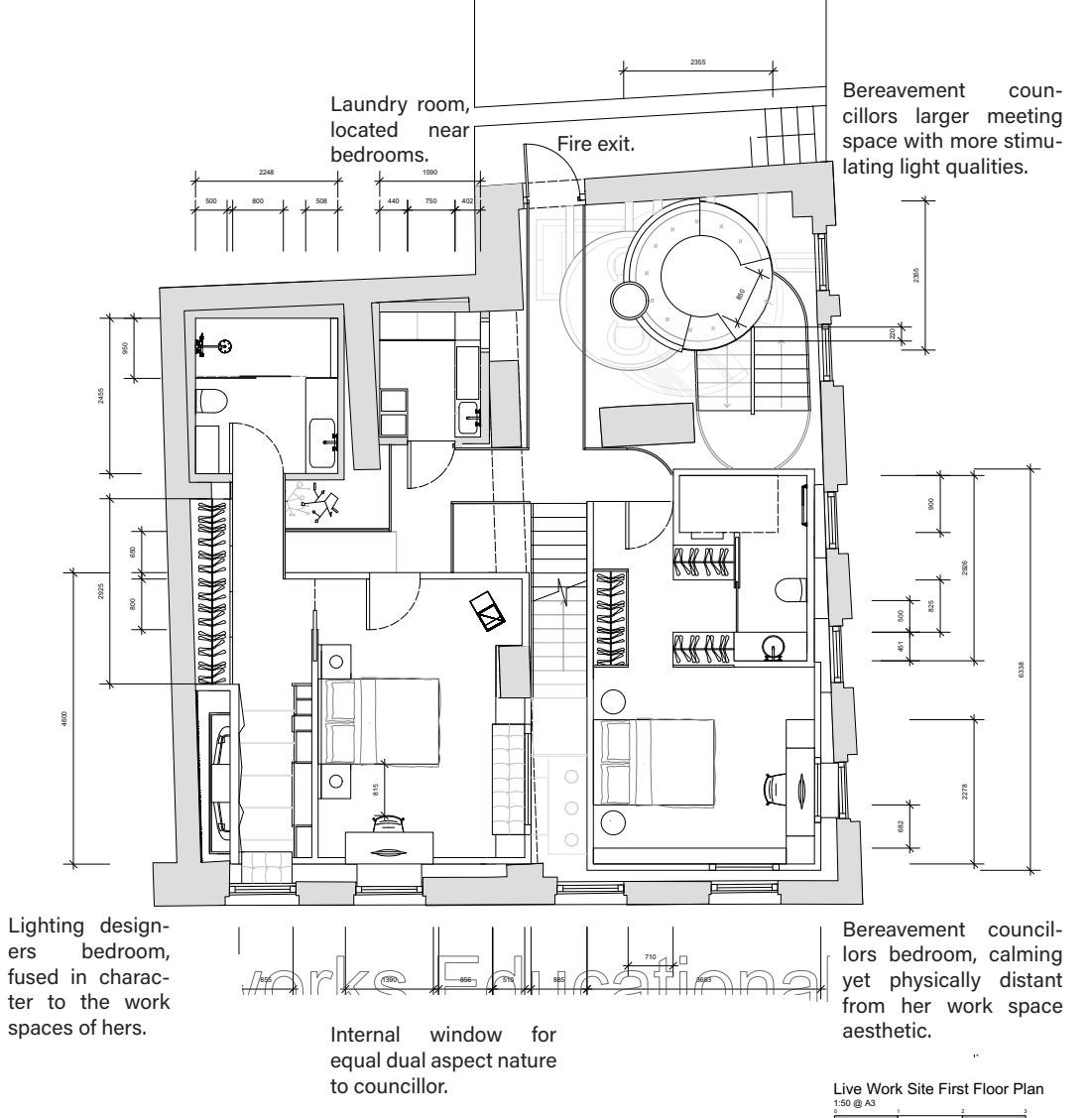
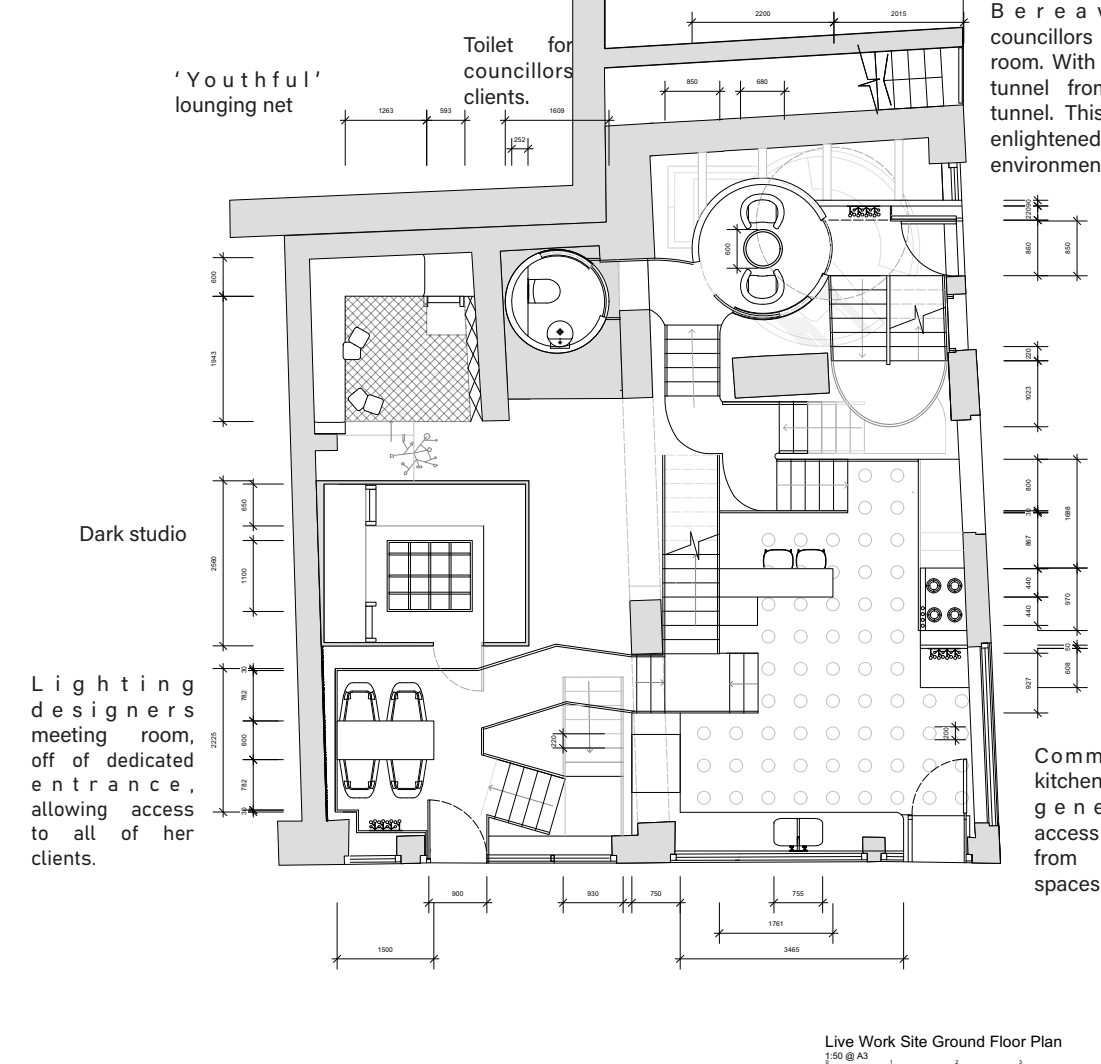
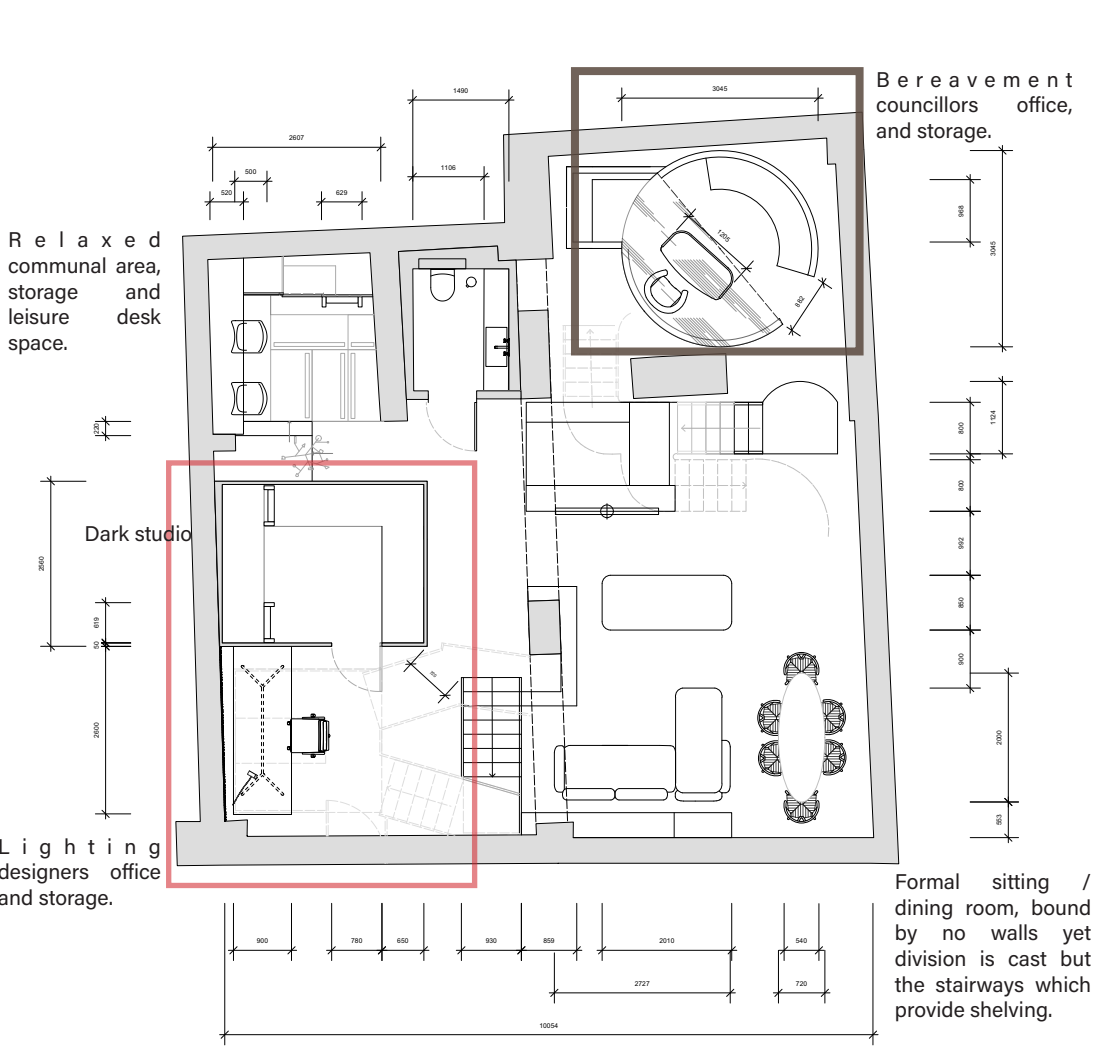
The ground floor is home to a large kitchen space, in the most naturally well lit area of the building. To ensure all natural light is utilised the floor of this area shall be made from Lux-crete, this means it is covered in 200mmD. 'hole punches', this allows light to stream down to the living space below. Natural light aids the uplifting feel, and calming light, desired of this area.



LIGHT

Light is a common harmonising factor within the whole space. Each area deals with the same themes, shadows, transparency and reflection, however, each space uses these techniques in its own way, aiding the identities of each space.

FINAL PLANS
MEASUREMENTS IN MM



Within the top right corner of these plans you can see the bereavement councillors work spaces, they all share the same warm natural colour pallet, yet are drastically different due to their light inputs, each of the meeting rooms host different benefits to the councillors clients emotional needs. Clients can move up towards the light' as their sessions continue, sensory materials are used higher up whilst the ground floor acts as a blank canvas.



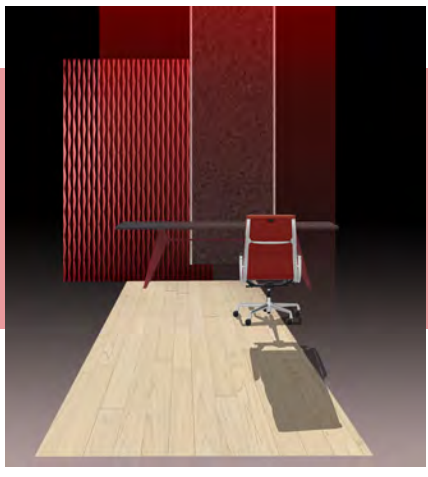
Translucent materials allow light to flood in. **FIRST FLOOR**



An overhead light tunnel produces a focused enlightening atmosphere. **GROUND FLOOR**

- 1 BLACK CORK BOARD
- 2 LITTLE GREENE PAINT Dock blue no. 252
- 3 PERFORATED ALUMINIUM SHEETS- Gooding aluminium, 19MM perforation. Colour, anodised satin smoked chrome
- 4 ORAL DECOR 3D wall covering, '111 Ridge'. L200h25x15cm inspired by theatre curtain.
- 5 LIGHT OAK. Luxury flooring -Brimham apple oak
- 6 VINTAGE BLACK LEATHER- Colour, shadow 100% Semi aniline leather, the lounge.co
- 7 VINTAGE RED LEATHER - colour, red stone. Composition 100% leather. Vitra

Here within the plans, (bottom left corner) you can see the lighting designers work spaces and personal bedroom are positioned on top of each other. The work spaces have a dramatic rich material and colour pallet, reminiscent of the theatres she works in, the bedroom continues the theme with a more subtle approach, (as conveyed within these style boards).



BASEMENT

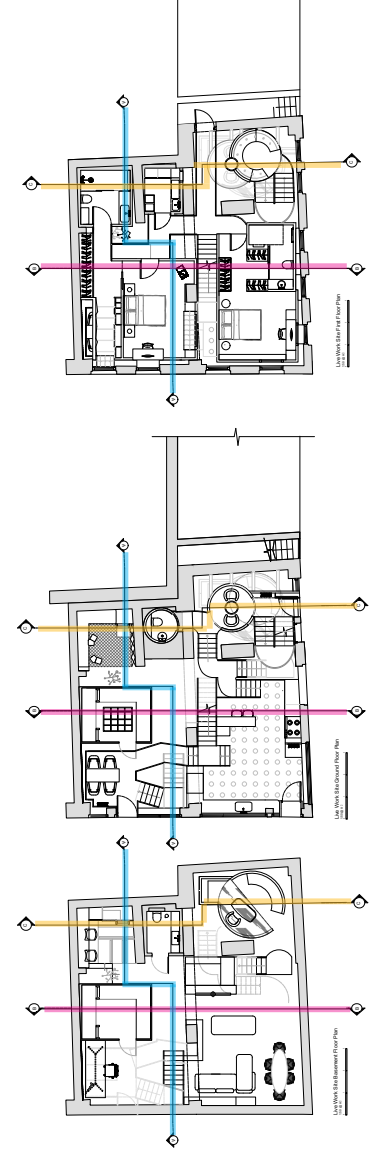
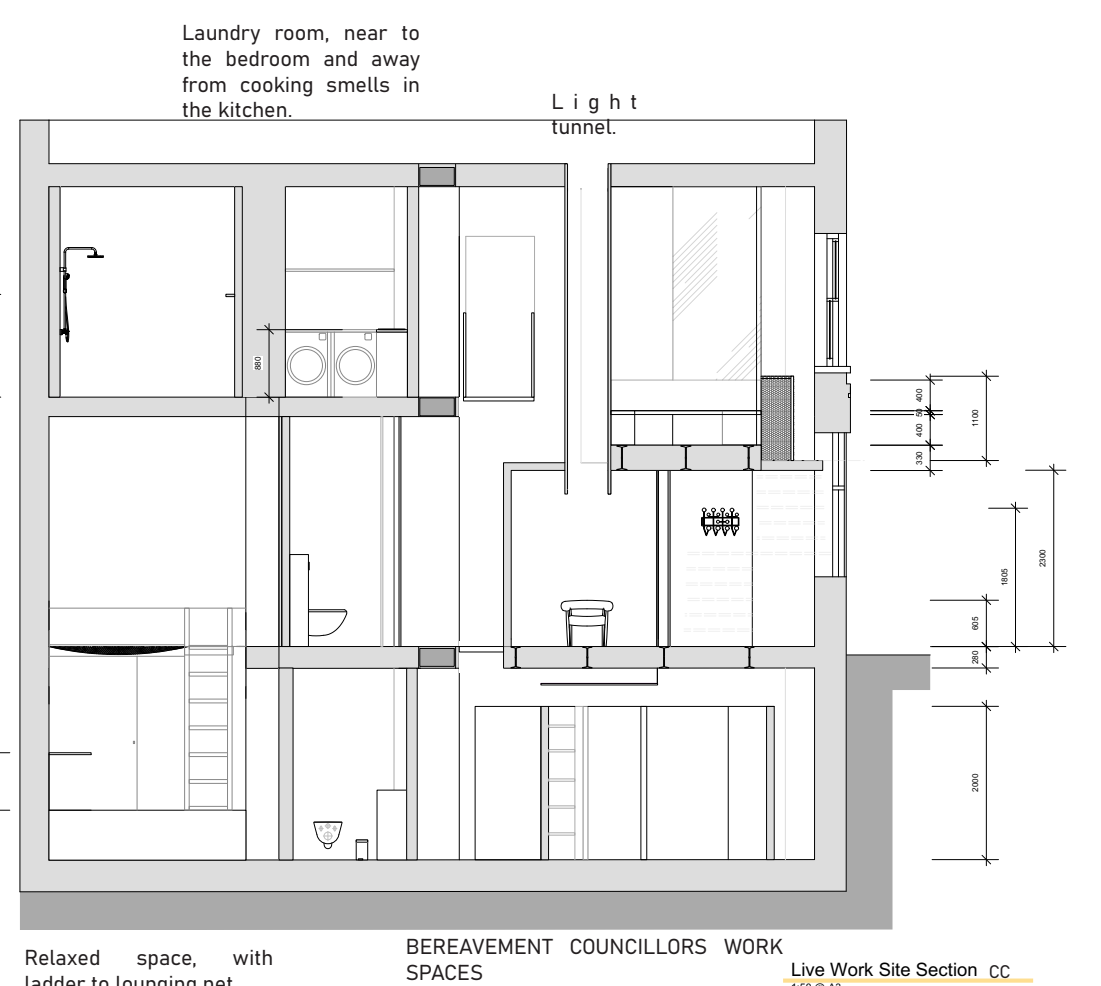
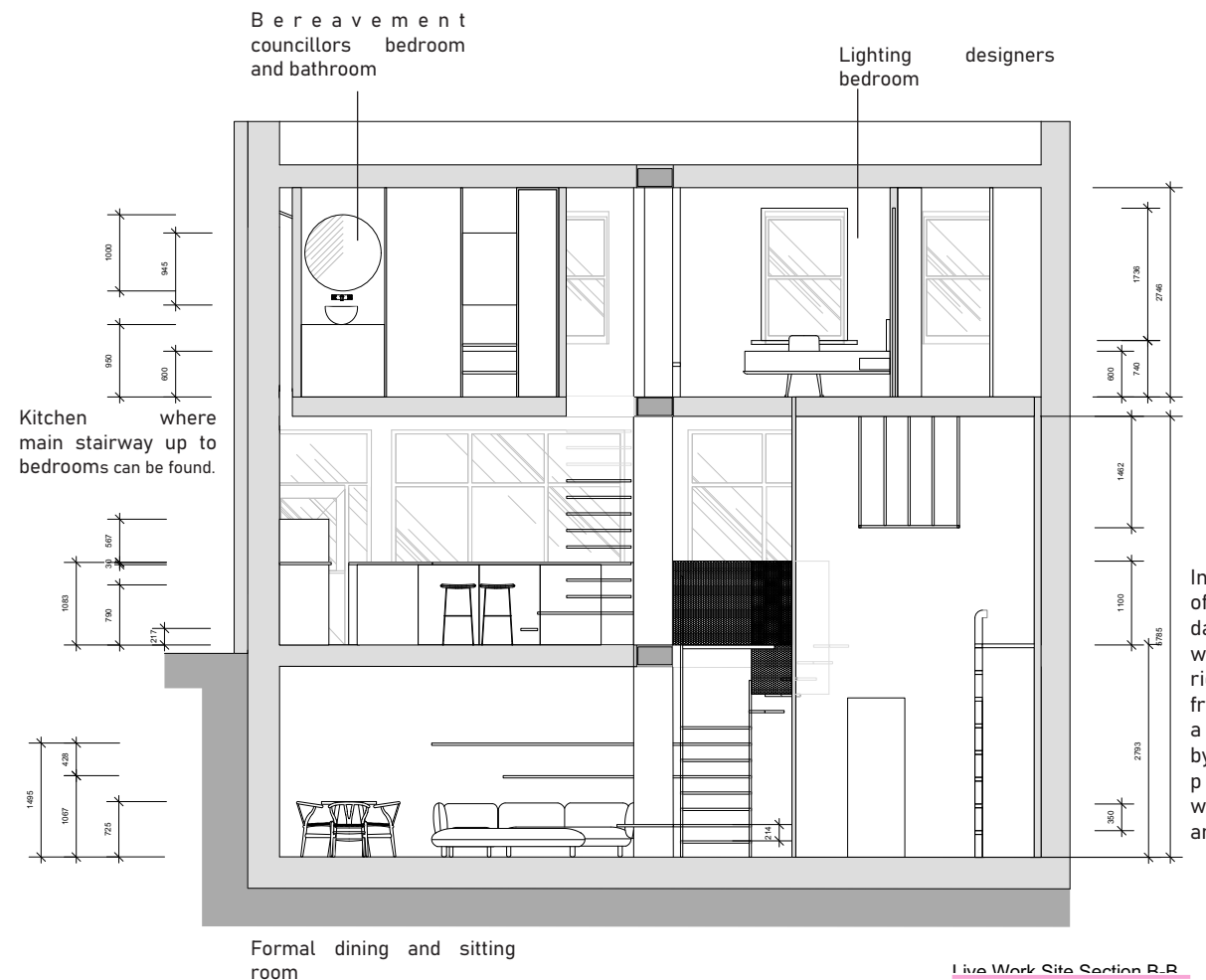
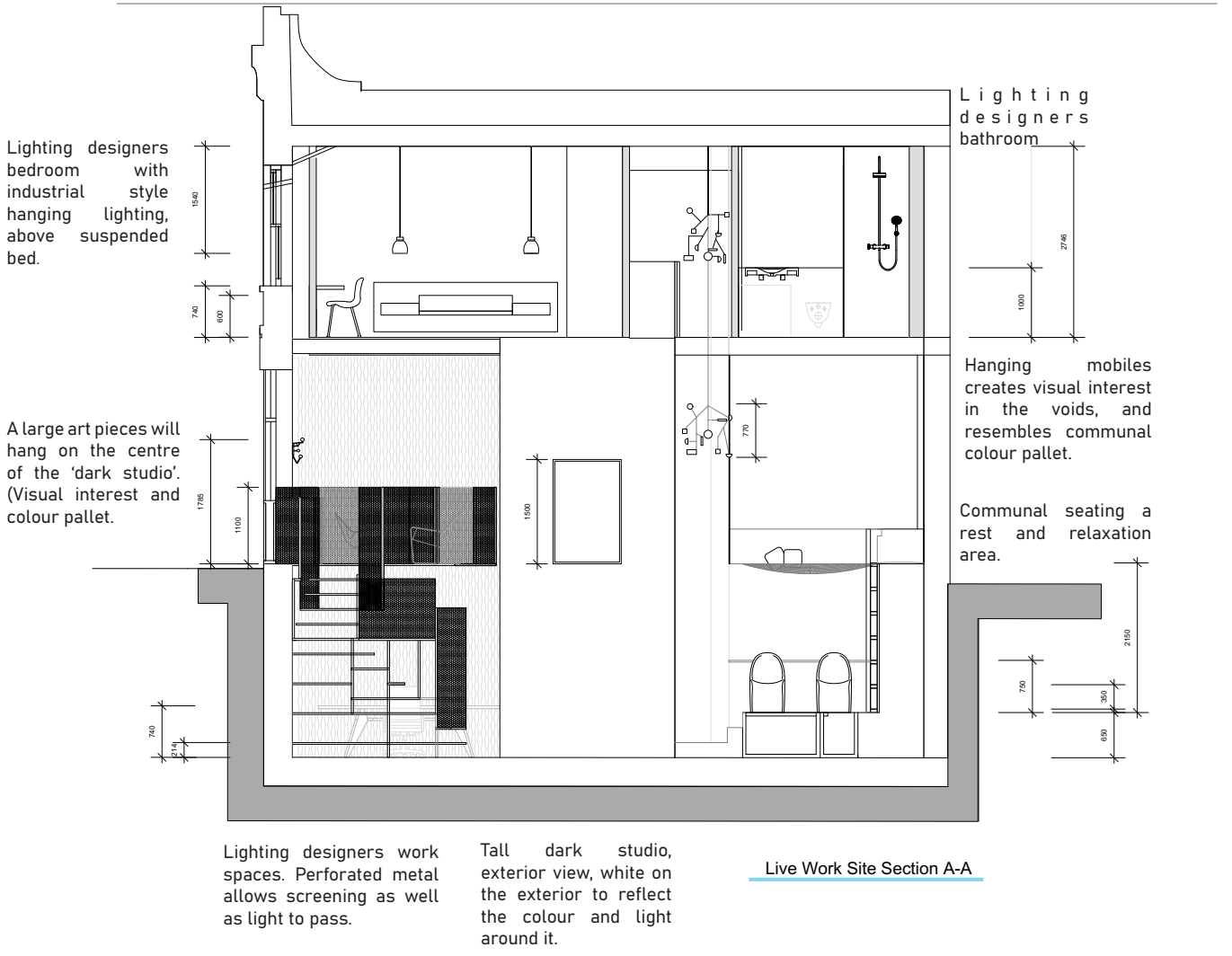


GROUND FLOOR



FIRST FLOOR

SECTIONS
MEASUREMENTS IN MM



AREAS EXPLORED



The physical closeness and shared colour pallet the lighting designer has within her work and private spaces is very intentional. Her work is part of her, she does not wish to switch off and distance herself from her craft. Below the internal window can be seen clearly, embedded within the wall storage a bench like seat offers views out, there is no privacy issues here as the window is positioned in the void above the staircase, alongside the solid wall of the councillors room.



LIGHTING DESIGNERS BEDROOM

Positioned directly above their work space the enclosed private space houses their bedroom, bathroom and wardrobe area.

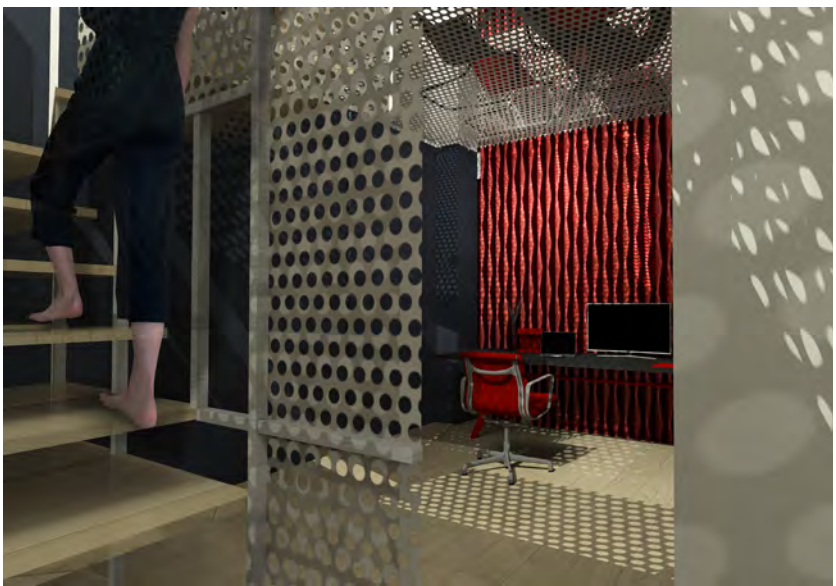
DARK STUDIO

Spanning the height of two floors this large oblong insertion, white one two faces it is able to sit back visually in the space, whilst defining the lighting designers work space with its darker 'Dock blue' face.



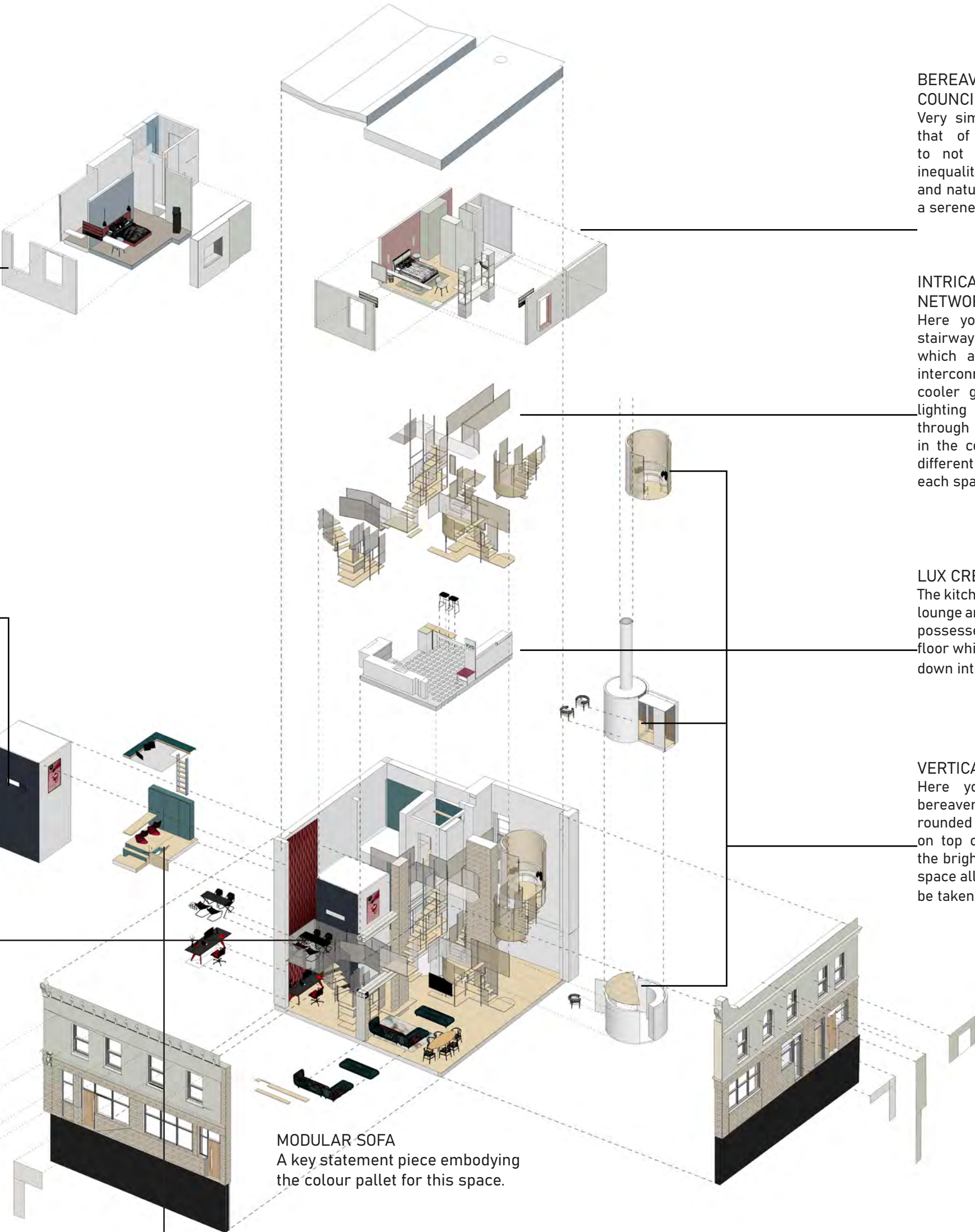
A view port in the side of the 'dark studio' allows clients to see the lighting set ups the lighting design is presenting, fusing the uses of these spaces together.

On the basement floor the office space is gently lit by the light falling through the perforated metal. This same metal in different tones can be seen across the space, forming the balance between privacy and openness.



PERFORATED ALUMINIUM

Three sheets of perforated aluminium anodised in three shades wrap around both exposed sides of the building, creating a shadows pattern on the exterior as well as tying with the layout and materiality of the interior.



MODULAR SOFA
A key statement piece embodying the colour pallet for this space.

BEREAVEMENT COUNCILLORS BEDROOM

Very similar size and layout to that of the lighting designer to not provoke the sense of inequality, this dual aspect space and natural colour pallet creates a serene atmosphere.

INTRICATE STAIRWAY NETWORK

Here you can see the unified stairways and walkways which allow for this vertically interconnected space. The cooler grey metal used in the lighting designers areas fades through to a warmer golden hue in the councillors reflecting the different toned light to pair with each space.

LUX CRETE KITCHEN

The kitchen sits directly above the lounge and dining area, however it possesses a perforated concrete floor which allows light to stream down into the basement below.

VERTICAL WORK SPACES

Here you can see how the bereavement councillors rounded work spaces sit directly on top of each-other, in one of the brightest front corners of the space allowing for natural light to be taken advantage of.



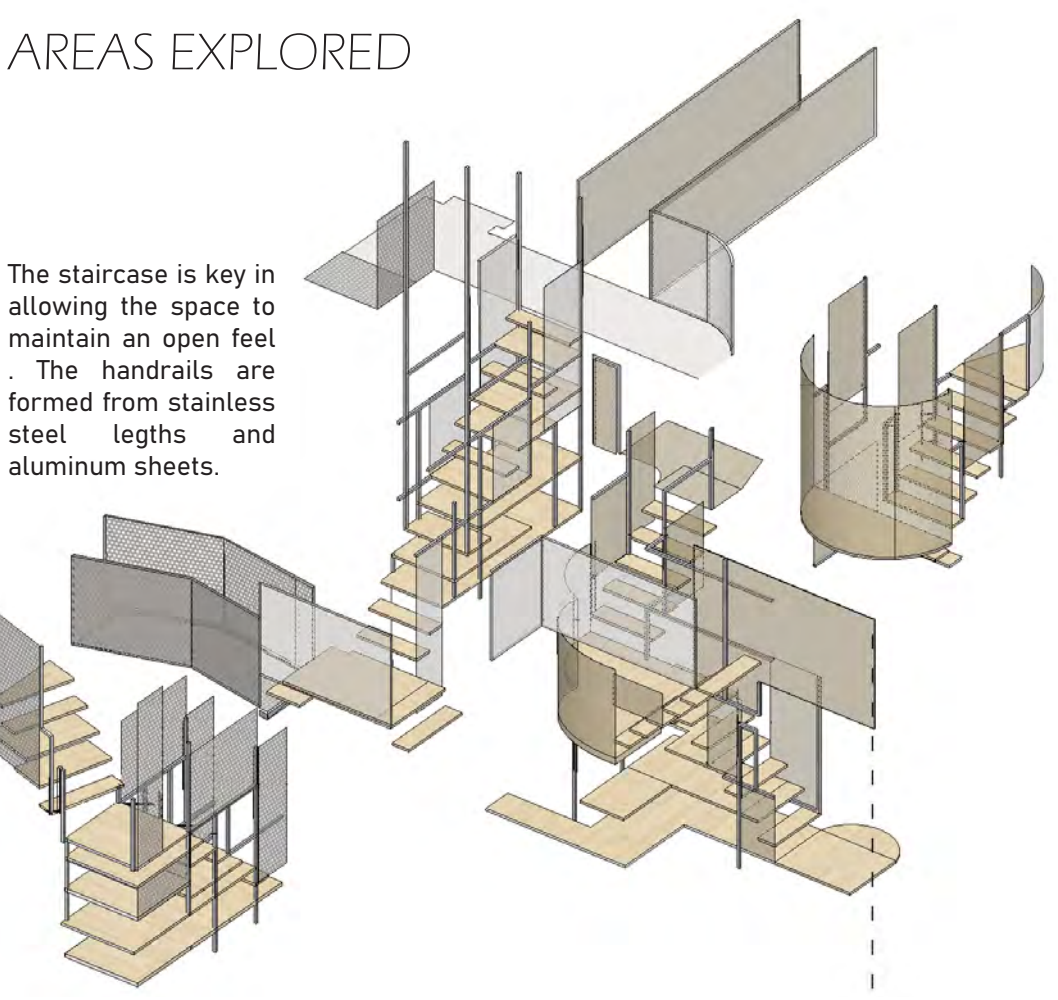
RELAXED SOCIAL SPACE

Tucked away in the furthest back corner is a playful place of retreat, housing storage within the floor and walls (as seen in section AA), a place to work on non work related projects and lounging net, accessed via a built in ladder.

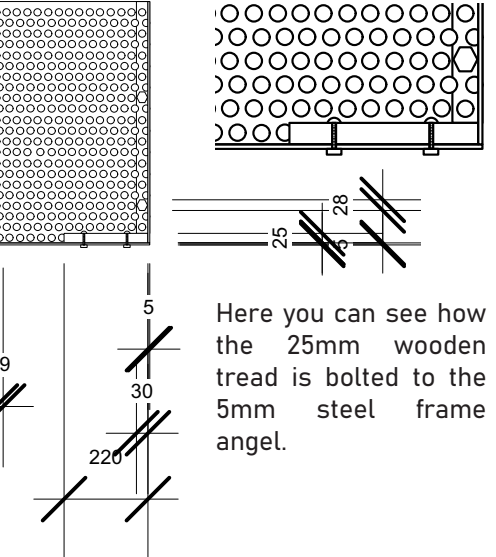
This provides a rest space away from the formal sitting room if one occupant has guest over for example.

AREAS EXPLORED

The staircase is key in allowing the space to maintain an open feel. The handrails are formed from stainless steel legths and aluminum sheets.



Here you can see the serene scheme of the councillors bedroom, claming and natural, yet distant enough from the tones within her work space to create a sense of separation.



The aluminium shall be aligned to ensure there is one row of the staggered aluminium perforation which sits in the centre of the steel horizontal corner piece. The bolt shall be passed through this 19mm hole, finishing the fixture with a custom 28 mm head bolt so as to overhang the 19mm perforation by 5mm as well as fitting the 30 steel corner surface.



Here you are able to see how the stairs act as a division between the lighting designers office and the living space, the treads can also be used as storage as they vary in length traveling back towards the wall.



OPEN AND BOUNDLESS

PRIVATE AND CONCEALED



The different types of areas within this space allow for a refreshing non conventional feel, this important as living and working within one environment does have the potential to feel rather confined and oppressive if not executed correctly.