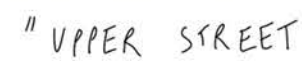


LOCATION: 341 UPPER STREET, LONDON, N1 0PB



**PROPOSAL  
IDEA:  
LIVE/WORK  
HOUSING**



**WITHIN SHARED LIVING:** Re-purposing the High Street in a post pandemic world to respond to changing needs

My proposal idea is to transform a **3-storey restaurant** situated in **Islington** and to transform it into a **co-working / co-living environment for two seperate professional individuals**. Within the interior the clients will have their own **private areas** as well as **shared communal spaces**. The inhabitants will have the opportunity to **enjoy the City life of London**. This project will enable the inhabitants to afford a property together in London and adapt a new contemporary way of living.

Large amounts of light penetrates throughout the day for long periods of time onto the front and side elevation of the building. Creating an ethereal atmospheric ambience.

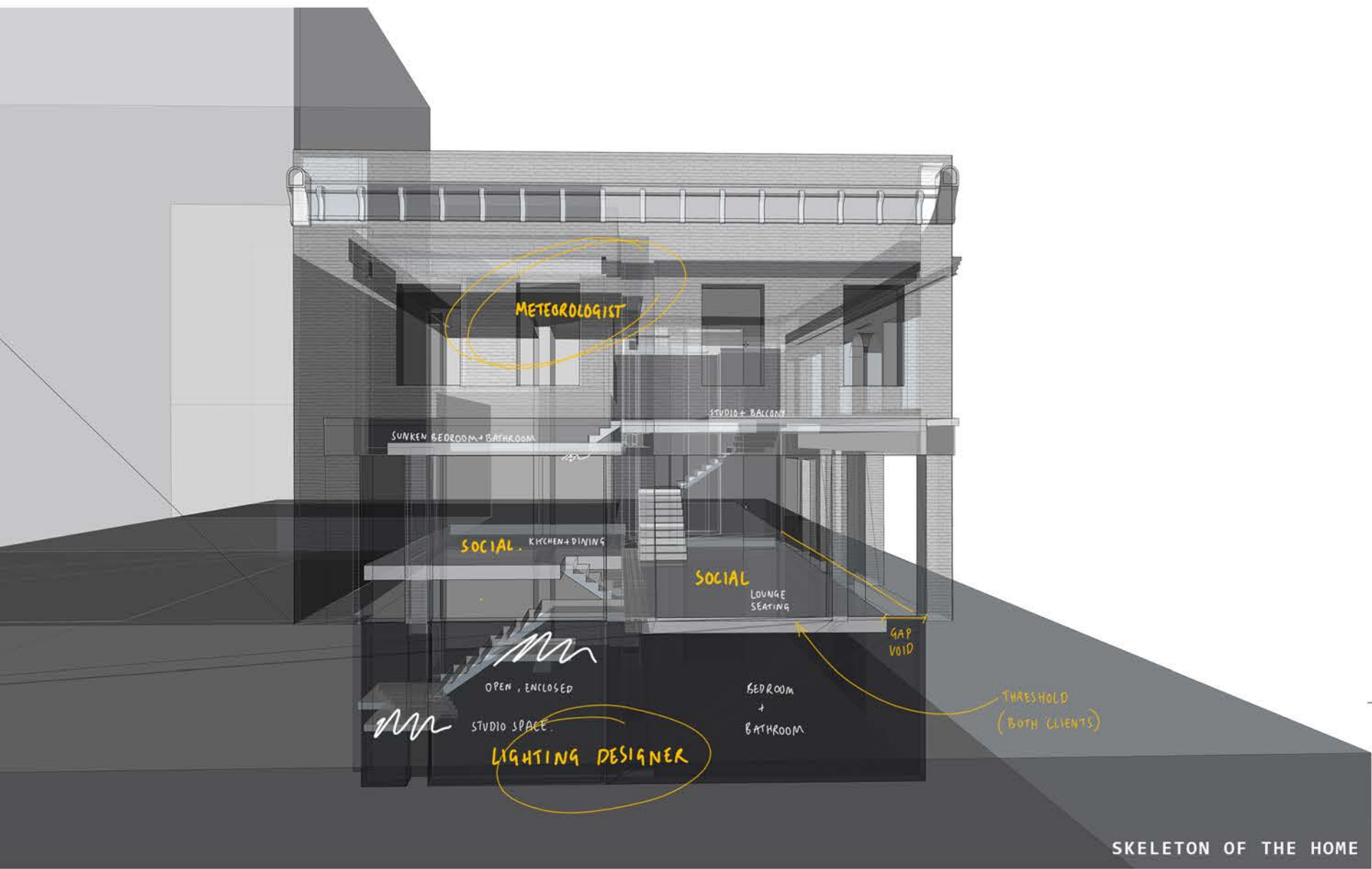




# CO

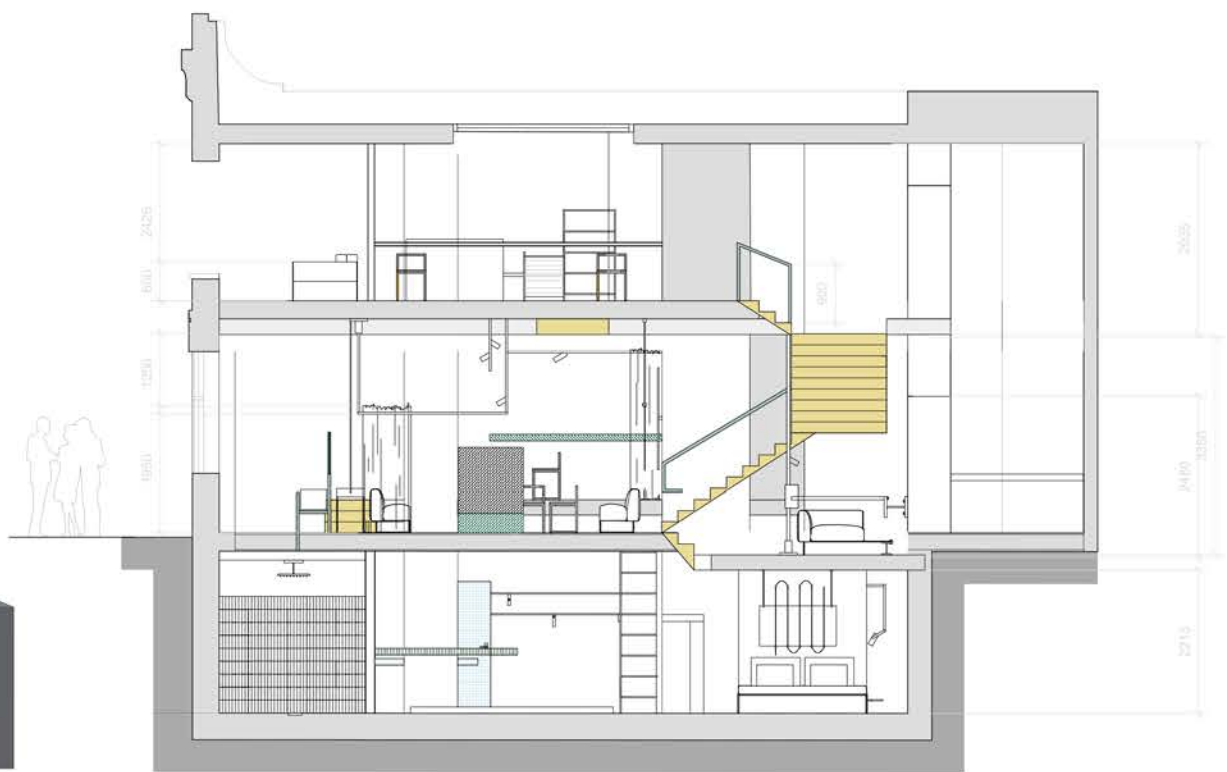


HOUSING  
LIVING  
WORKING  
SOCIALISING

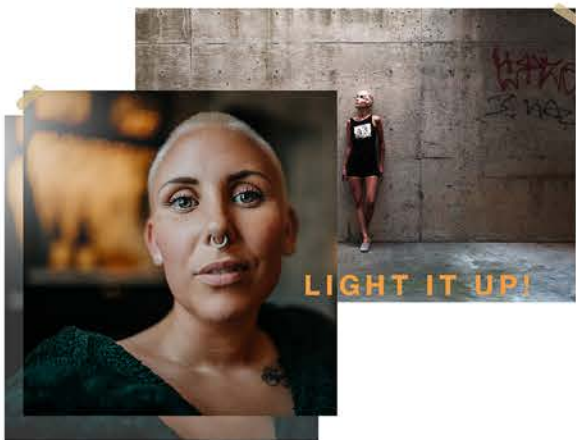


Today's **social shifts** and **challenges** are more **diverse** and less **predictable**. The pace of change in modern society affected many aspects of modern life, such as, **household structure change**, **worklife balance change**, **demographic change**.

The composition of households is becoming more different from the usual and conventional styles of living. As a response to the social shifts and challenges the society is becoming more **open-minded** about new ways of living.



SECTION AA



CLIENT: LIGHTING DESIGNER

NECESSITIES:

- LARGE SURFACE AREA TO WORK
- STORAGE
- STUDIO SPACE FOR TESTING
- BLACKOUT CURTAINS
- PRIVATE WORKSPACE

CHARACTERISTICS:

CONFIDENT-ACTIVE-EXPERIMENTAL



CLIENT: METEOROLOGIST

NECESSITIES:

- LARGE SURFACE AREA TO WORK
- STORAGE
- GREEN SCREEN
- INDOOR/OUTDOOR WORKING AREA

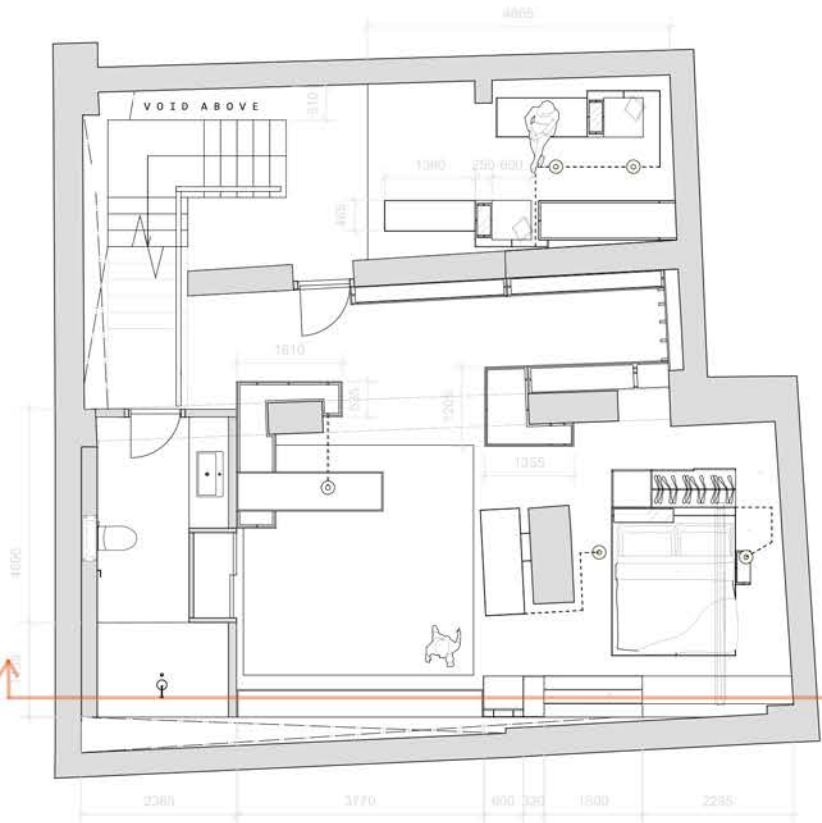
CHARACTERISTICS:

TECHNICAL-OBSERVATIONAL-ANALYTICAL

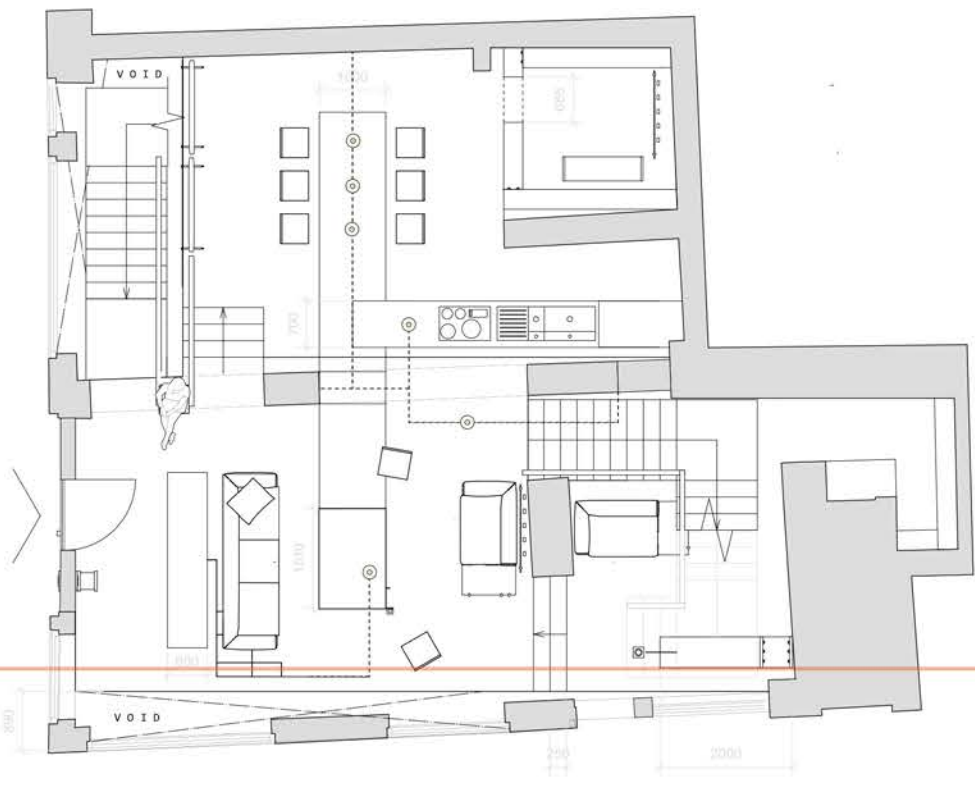


SHADES OF VISION

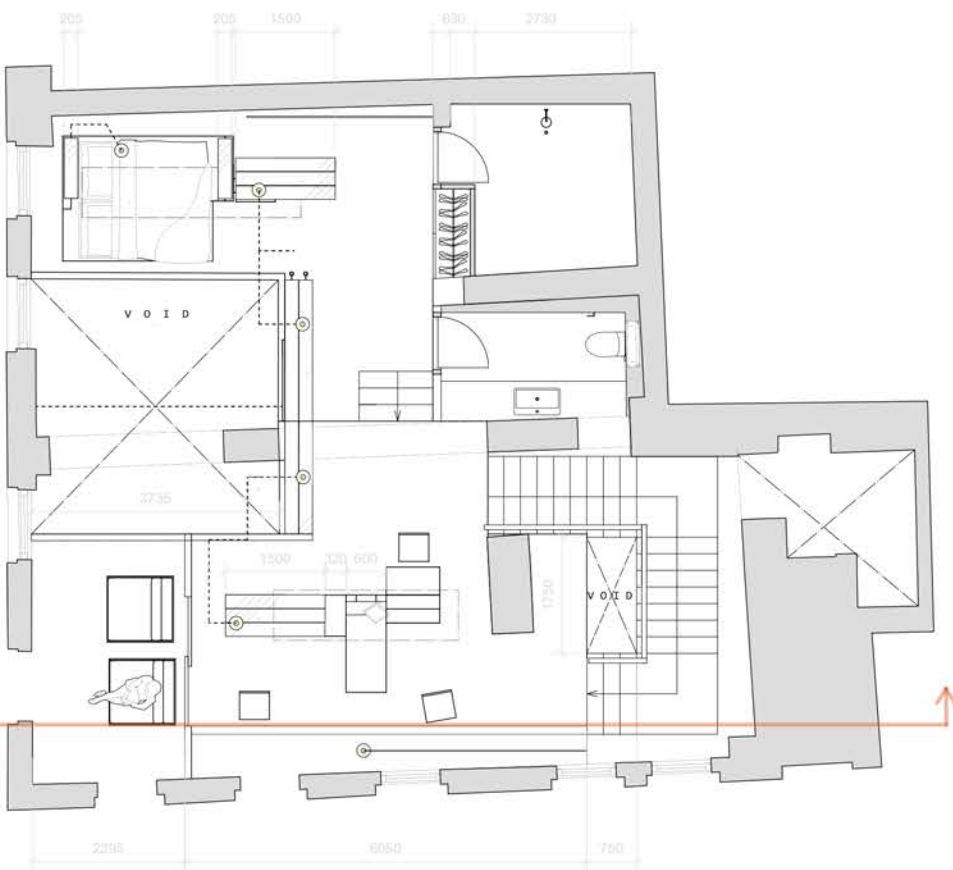
ALTERNATIVE LEVELS AND WAY-FINDING EXPERIENCES



PLAN BASEMENT



PLAN GROUND FLOOR



PLAN FIRST FLOOR



INSPIRATIONAL REFERENCE IMAGES

RELAXED  
CASUAL  
ALTERNATIVE  
COMPOSITIONS



SPATIAL POTENTIAL THROUGH CASUAL COMPOSITIONS



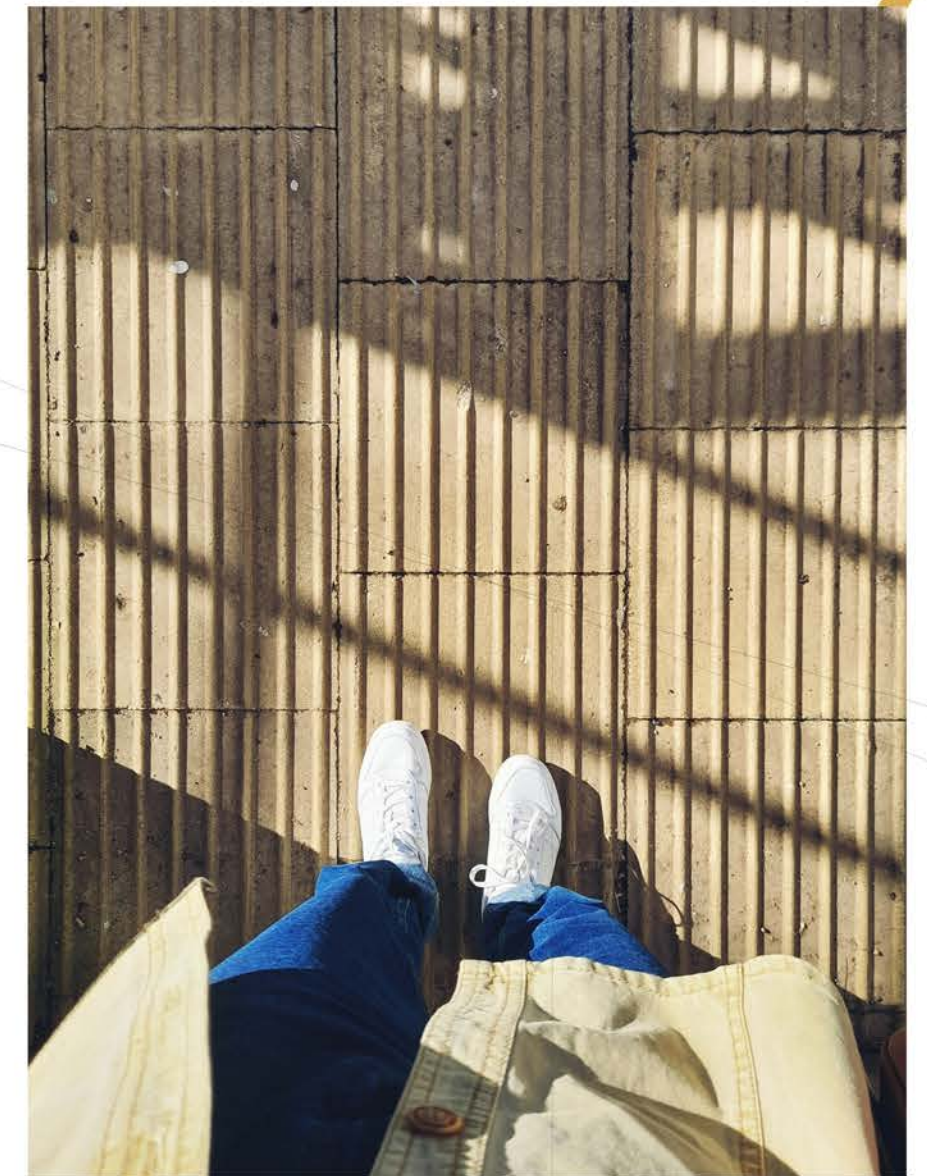
# DUSTY CITY HUES

INJECTED WITH ZINGY YELLOW

A VISUAL MOOD BOARD EXPRESSING THE CONTEMPORARY CITY, THE RAW & REAL AND LIGHTWEIGHT AESTHETICS DESIRED IN THE SPACE. ALONG WITH A SPECIFICATION OF THE CHOSEN MATERIALS WITH A MATERIALITY SAMPLE BOARD.



Materiality board, Ieva Marija Eid





SUNKEN ESCAPISM. ENCLOSED AREA FOR CLIENTS TO DETATCH



CONNECTING & BONDING. I-BEAMS CELEBRATE THE SKELETON OF THE HOME BY COMPOSING CONSTRUCTIVE DETAILS



I-BEAM CELEBRATES THE SKELETON OF THE HOME

THE UNUSUAL. A 7M SURFACE AREA CROSSES THROUGH THE ENTIRE COMMUNAL SOCIAL SPACE. WHAT BEGINS AS A COFFEE TABLE, FOLDS ONTO THE FLOOR AND RISES INTO A DINING TABLE. CREATING A MOMENT OF TOGETHERNES.



TRoubleMAKER, REBELLIOUS

CROWD SAFETY BARRIERS

# FUTURE INTERIORS

METEOROLOGIST

POST-COVID SETTLEMENT CELEBRATING FUTURE SPACES AND POSSIBILITIES OF MODERN LIVING.

- A bold, structural, heavy staircase moulds into place with leveled floors as the skeleton of the building. The impressive dramatic features adds drama and character how a user will circulate through the space.
- Having these imposing steps and levels, allows choice for the users to travel in multiple of ways whilst engaging and becoming part of the space.
- As a result choice and freedom is given to the clients - Lighting Designer and Meteorologist.

SPACE FOR BOTH

METEOROLOGIST LIGHTING DESIGNER

LEVELS AND SUNKEN SPACES



COME TOGETHER. SOCIAL SPACE FOR LIGHTING DESIGNER AND METEOROLOGIST SITUATED ON GROUND FLOOR

AN ECLECTIC MIX OF CITY VIBES, LINEAR FORMS AND INFORMAL COMPOSITIONS



IT IS WHERE THE **INHABITANTS ADVANCE** THE STORYLINE OF **ALTERNATIVE INFORMALITY...**

SHARED LIVING AS A RE-POPULATING OF THE STREET/CITY WITHIN A POST PANDEMIC WORLD.

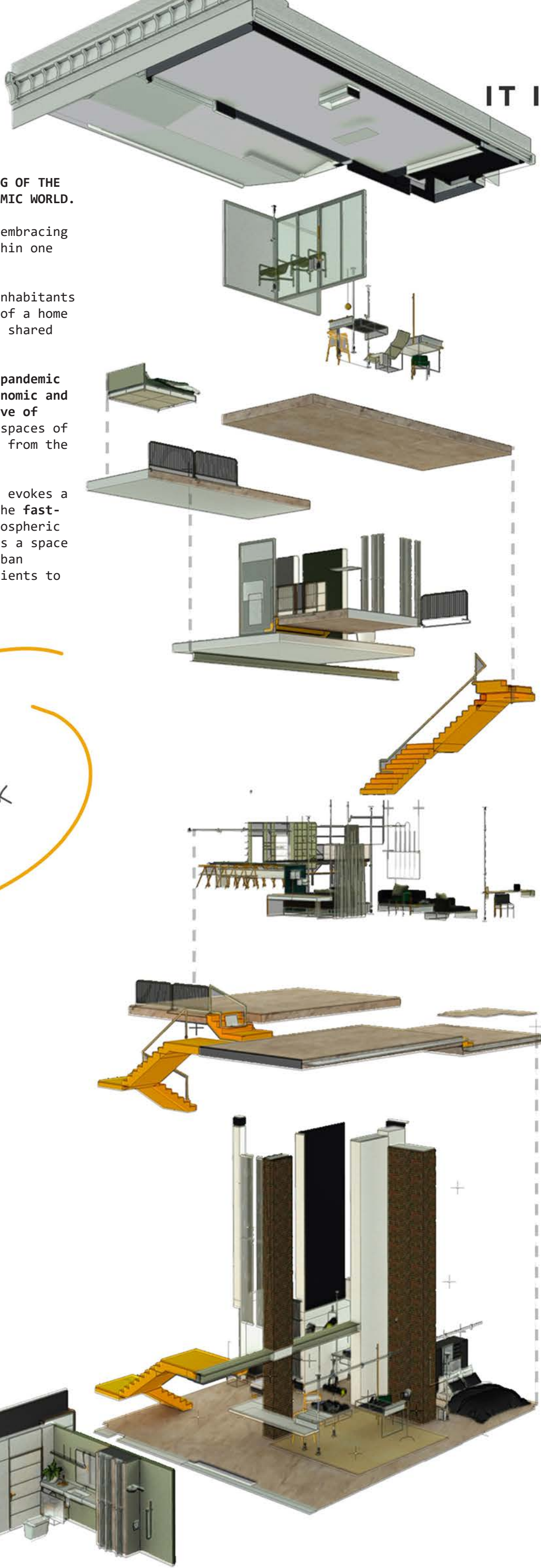
A home for **starter generators**, embracing a new way of living/working within one space.

The proposal idea will enable inhabitants to **adapt** to a different concept of a home by combining private as well as shared spaces.

The new challenges in the **post pandemic society**, such as political, economic and social reinforces our perspective of living arrangements. The future spaces of a home are becoming **alternative** from the usual and conventional.

The design elements of the home evokes a **vibrant city vibe** celebrating the **fast-paced, active and energetic** atmospheric ambience of London. This becomes a space injected with a contemporary urban atmospheric ambience for the clients to **grow into** and enjoy.

LIVE / WORK ENVIRONMENTS



ART AND ARCHITECTURE BALANCES ON THE BORDER BETWEEN FUNCTIONAL FURNITURE AND SCULPTURAL FORM.

- Linear geometric forms evokes contemporary culture. A form so delicate it celebrates its expressive sculptural form, yet has practicality and use for the user.
- Multifunctional, moveable and flexible pieces is desired to be engaged and interacted with. There is never a fixed place. Movement depending on mood advances alternative informality.
- The lightweightness of pieces gives total freedom to the clients to move, position and design forms as they like.

A NEW WAY OF LIVING



SEPERATE SPACES MET BY TOGETHERNESS IN THE MIDDLE



METEOROLOGIST BALCONY (FIRST FLOOR)

LIGHTING DESIGNER STUDIO SPACE (BASEMENT)