

THE FUTURE HIGH STREET AS A CREATIVE LIVE/WORK HUB FOR GRADUATES AND START-UPS

LIVE/WORK CLIENT CONCEPT ANALYSIS- CLIENT WRITER/POET

THROUGH SUMMARY
 WITH A FOCUS ON SUPPORTING RECENT GRADUATES ON THE ROAD TO THEIR PROFESSIONAL CAREERS, THIS PROJECT AIMS TO TAKE A RECENTLY PURCHASED THREE-STORY BUILDING WITHIN THE ISLINGTON DISTRICT, AND ESTABLISH ITS NAME AS A TYPE OF 'START-UP STUDIO', KITTED OUT TO ADEQUATELY INITIATE THE INDIVIDUAL'S BRAND AND FURTHER THEIR FUTURE BUSINESS. HEADED BY AN INDIVIDUAL UNIVERSITY, WHO AIM TO GAIN KNOWLEDGE AND PUT IT INTO ACTION BY DEVELOPING FAIRER, HEALTHIER, MORE PROSPEROUS AND SUSTAINABLE SOCIETIES' ABLE TO TRANSFORM OUTCOMES FOR INDIVIDUALS, THE PROPOSED CONCEPT INTENDS TO RE-CONNECT THE YOUNGER GENERATION WITH THE LOCAL COMMUNITY AND VALUE WHAT IT HAS TO SHARE. WITH PRIORITIES SURROUNDING LIVE AND WORK THE SITE LIES ITSELF TO A ONE YEAR RESIDENCY PER GRADUATE AND DURING TURN-AROUND IS EXPECTED THAT A NEW GRADUATE OF THE SAME PROFESSION WILL TAKE OVER; AND AS SUCH THE DESIGN SHOULD REMAIN CAREER SPECIFIC YET VERSATILE TO A RANGE OF VARYING AGENDAS.

EXPECTATIONS PRESENTED FOR A SUCCESSFUL START-UP STUDIO-

ALL THE STANDARD, EXPECTED NECESSITIES FOR ANY APARTMENT-STYLE RESIDENCE, INCLUDING- DOUBLE BED, BATHROOM (WITH TOILET, BATH AND SHOWER), NECESSARY STORAGE FOR YEARLY RESIDENCY, A SPACE FOR SHARING MEALS WITH FAMILY AND FRIENDS, KITCHEN AND SPACES TO SIT AND WORK
 ADDITIONAL FUNCTIONAL DETAILS THAT BOOST FUTURE CAREER SUCCESS, INCLUDING A SPACE TO CONVERSE AND SAGE NARRATIVES FROM VISITING COMMUNITY MEMBERS
 EMPHASIS AND CONSIDERATIONS REGARDING MATERIALITY AND DESIGN OUTPUT PRIORITISES A CONTEMPORARY, PLEASANT OUTLOOK, ENCOURAGING LOCALS TO OPEN UP ABOUT THEIR STORIES
 SUITABLE INTERIOR DESIGN TO ENSURE NEW GRADUATES ARE SUPPORTED AND WELL CATERED TO IN THEIR FIRST YEAR POST GRADUATION AND HOPEFULLY MANY YEARS AFTERWARDS

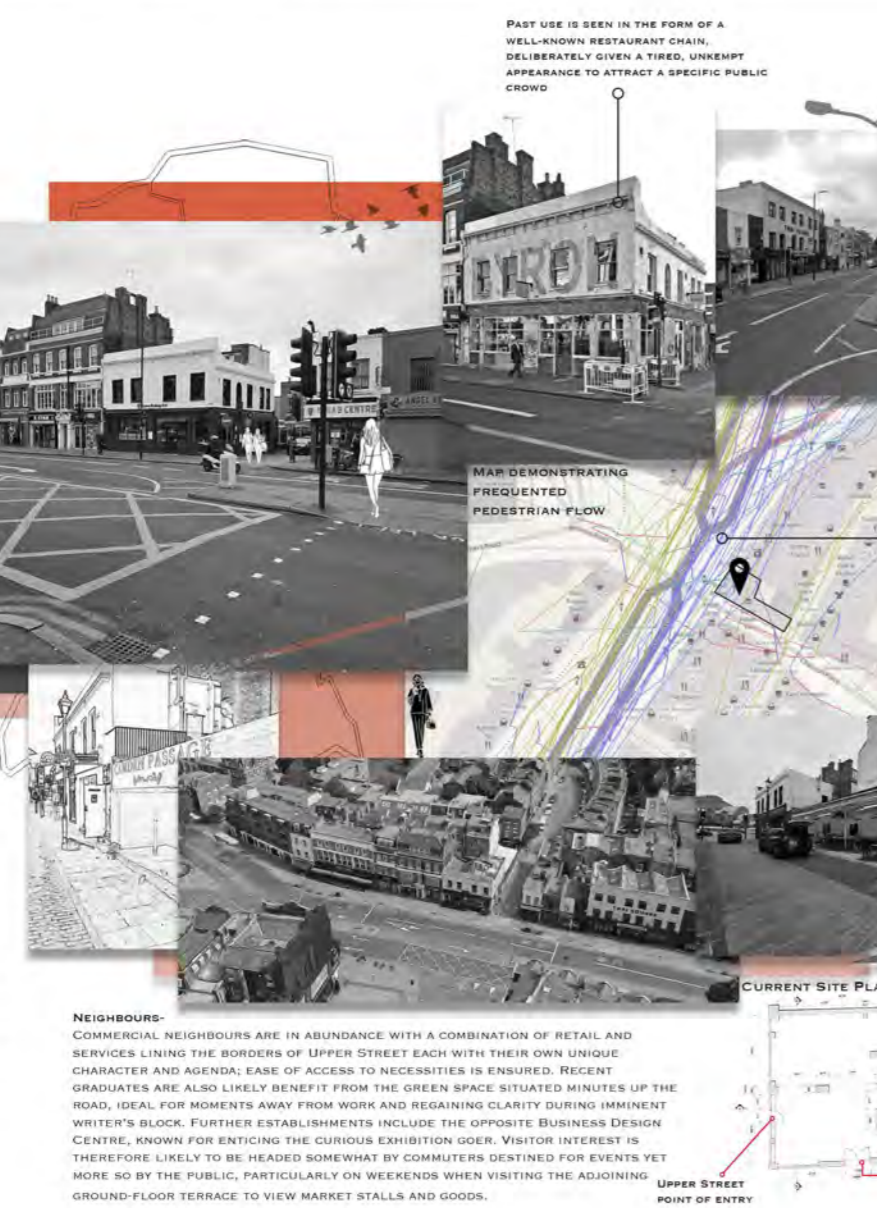
CONSIDERATIONS-

DESIGNATED SPACE FOR TAKING A BREAK FROM LONG HOURS OF WRITING, IDEALLY WITH A VIEW DIRECTED (WEST) AT FADING SUNSET RAYS
 SITE LOCATION ADDS ADDITIONAL PRESSURE FOR INTERIOR NOISE POLLUTION, AS SUCH POPULAR AREAS OF PRIME INTEREST AND FREQUENT USE SHOULD BE CAREFULLY CONSIDERED
 SOMETHING OF A SEPARATION BETWEEN PUBLIC AND PRIVATE SPACES WITHIN THE STUDIO TO ALLOW FOR A COMFORTABLE LIVING ARRANGEMENT
 PUBLIC USE OF SPACES MUST BE ENSURED TO MAINTAIN AN EASY-GOING NATURE, PRIMARILY AS SUCH TO ENCOURAGE OUTSIDE CONVERSATION
 SUITABLE DEMARCATION OF SELECTED POINTS OF ENTRY AND EXIT TO MAXIMISE OPTIMUM FLOW AND CIRCULATION, BOTH WITHIN THE INTERIOR AND UPON APPROACH
 LIVING SPACES INCLUDING SLEEPING AREAS AND DINING SPACES COULD APPEAR ON UPPER LEVELS, TO MAKE THE MOST OF SOUTH-FACING WINDOWS WITHOUT OBSTRUCTION
 SUITABLE SPACE TO OBSERVE PASSERS-BY, IDEALLY ON THE UPPER FLOOR TO GRANT UNOBSTRUCTED VIEWPOINTS
 DESIGNATED AREA FOR PUBLIC CONVERSATION THAT FEELS OPEN AND PURPOSEFUL.

REVEALED THROUGH CLIENT EXPECTATION, NEW DESIGN PROPOSALS WANT TO PRIORITISE A CREATIVE, CONTEMPORARY APPROACH THAT INTENDS TO ENCOURAGE INVOLVEMENT AND CONVERSATION, IDEALLY THROUGH AN EAST-GOING NATURE. LINES IN PART SORTING EVENTS AND GATHERINGS THAT CONNECT LOCAL NARRATIVES AND EXPERIENCES; JOINING PEOPLE AND PLACES, ON DAYS OF REST AND SOLITARY COMPANY. INDIVIDUALS ARE INVITED TO OBSERVE THE WORLD GO BY, PRACTICING MINDFULNESS, WHILST GAGING SILENT GLIMPSES INTO THE LIVES OF PASSERS-BY. PUBLIC INTEREST SHOULD BE KEPT CONSISTENT THROUGH VISUAL CHALLENGE AND INTERIOR EXPLORATION, BRINGING ABOUT A SENSE OF EXCITEMENT AND CURIOSITY AMONGST INDIVIDUAL GUESTS. WITH THE EXPECTATION THAT EXTERNAL VISITORS WILL BE SHARING THE SPACE, DESIGNS SHOULD STRIVE TO REMAIN INCLUSIVE, DEDICATED TO THEIR CAUSE OF SUPPORT AND UNDERSTANDING.

LIVE/WORK SITE ANALYSIS-

SITE SURROUNDINGS & CONTEXT-
 SITUATED ALONG A WELL-FREQUENTED ROAD THE SITE ITSELF IS NO STRANGER TO SCOPE LED BY THE PASSING COMMUTER OR LONELY PASSER-BY. DUE TO THE FUTURE STUDIO'S INTENT DROP-IN STYLE CONVERSATION IS WELCOMED AND SOMEWHAT SEEN AS UNEXPECTED. IDEAL FOR CREATIVE INSPIRATION AND CONNECTIONS WITHIN NARRATIVES, A SPACE THAT SEEMS AS UNEXPECTED, IDEAL. THE LOCAL SCENE NEVER SEEN IT NEEDED.
 REGARDING ACCESS PUBLIC TRANSPORT IS FAR FROM SCARCE, WITH BOTH ANGEL AND Highbury & Islington Tube Stations Accessed on foot or by bus; PROVIDING EASE OF ACCESS FOR VISITING COLLEAGUES OR FRIENDS.
HISTORICAL FEATURES & RESTRICTIONS-
 LOCATED ALONG UPPER STREET IN THE BOROUGHS OF ISLINGTON, THE FREQUENTLY USED SITE HAS HAD ITS FAIR SHARE OF DOMINANT RESTAURANT CHAINS TAKE UP RESIDENCE; ALTHOUGH RETAINING BUSINESS PRESENCE HAS FAILED TO REMAIN CONSTANT. AS SUCH THE BUILDING HAS TAKEN MANY FORMS, ATTRACTING OFTEN THE WANDERING YOUTH OR OCCASIONAL HUNGRY PASSER-BY.
 BEFORE ITS CURRENT STREET BURGER STALLS, THE SITE WAS ONCE A RETAIL SPACE AND PRIOR A FRIENDLY LOCAL PUB THAT OFTEN DREW TOGETHER ISLINGTON'S COMMUNITY. AS OF NOW THE SITE ITSELF SITS WITHIN A CONSERVATION AREA, NAMED 'THE ANGEL' BY ISLINGTON BOROUGHS COUNCIL AND AS SUCH VARIOUS BUILDING RESTRICTIONS APPLY WITH INTENT OF PRESERVATION. THESE INCLUDE RETAINING ALL EXISTING BRICKWORK AND MORNING AROUND A DUO OF STEEL BEAMS THAT ACT AS VITAL SUPPORT MAINTAINING THE BUILDING'S INTEGRITY. AT THE BACK, THE GROUND-FLOOR TERRACE MUST KEEP ITS OPEN-AIR NATURE, AS SUCH TO ALLOW NECESSARY ACCESS TO WEEKEND EVENTS AND EASE OF PUBLIC VISITATION. DESPITE THESE RESTRICTIONS, OPPORTUNITIES TO SHOWCASE PAST CHARACTER IS REALISED, DESIGN PRIORITIES SHOULD BE CAREFUL TO MAINTAIN AN AIR OF RESPECT AND CONSIDERATION.



LIVE/WORK CLIENT CONCEPT ANALYSIS- CLIENT WRITER/POET



KEY PROFESSION ASPECTS-

THE CREATIVE PROCESS OFTEN BEGINS WITH A SERIES OF MIS-MATCHED IDEAS THAT LOOSELY RESEMBLE A STORYLINE, AS SUCH A SPACE DESIGNATED FOR SCRIBBLING SUDDEN THOUGHTS ENSURES VITAL INSPIRATION IS NOT FORGOTTEN
 SHORTLY FOLLOWING DRAFTING BEGINS, ATTEMPTING TO MAKE SOME SENSE AMONGST INITIAL THOUGHTS
 ONCE THE LITERARY PIECE IS LOOKING PROMISING, WRITERS OFTEN BEGIN REVISING THEIR WORK, ATTEMPTING TO MAXIMISE THE NARRATIVE IN TERMS OF HOW CONVINCING IT SOUNDS
 TO CONCLUDE, FINAL STAGES SURROUND EDITING, ENSURING A POLISHED OUTCOME IS WHAT MAKES ITS WAY ONTO THE PUBLISHERS MARKET, AS SUCH A DEDICATED WORKSPACE THAT DOUBLES AS A MEETING SPACE WITH COLLEAGUES IS VITAL IN REFINING FINAL STAGES

GENERAL CHARACTERISTICS SURROUND STRICT ATTENTION TO DETAIL AND A NEED FOR ORGANISATION, SPACES SHOULD LOOK TO REFLECT A SENSE OF CLARITY AND COMMITMENT; YET STILL REFLECT AN AUTHOR'S CREATIVE EXCITEMENT
 WRITER INSPIRATION IS GREATLY INFLUENCED BY SURROUNDING VISUAL LANGUAGE, FUTURE ADDITIONS OF CONTEMPORARY DETAILS OUGHT TO PROVIDE SPACES FOR KEEN OBSERVATION OF EXTERIOR FLORA AND SITE LOCALITY
 WORDS CARRY AN ASPECT OF POWER AND IMPORTANCE, ABLE TO MANIPULATE DESIRED RESPONSES FROM THEIR RECEIVER, INTERIOR ELEMENTS SHOULD ADD SUBTLE DRAMA TO INSPIRE AND MOTIVATE
 DESPITE A WRITER'S NEED FOR SURROUNDING INSPIRATION, PRIVATE SECTORS ARE LIKELY TO REMAIN SUBTLE AND MINIMAL IN OUTLOOK AS NOT TO OVERSHADOW INDIVIDUAL NARRATIVES

POTENTIAL VISITORS



LIVE/WORK UNDERSTANDING SITE LIGHTING & SUN POSITION-



WITH THE SUN RISING ON THE EAST AND SETTING ON THE WEST, DIRECT SUNLIGHT IS LARGELY RECEIVED BY THE BACK OF THE PROPERTY, ALTHOUGH CAREFULLY CONSIDERED WINDOW ADDITIONS ALONG THE SIDE OF THE SITE (PARALLEL TO CHARLTON PLACE) ENSURE INTERIOR LIGHTING REMAINS PRESENT AND NOT APPRECIATED.
 AT 12:00, AT ITS PEAK THE DIRECTIONAL RAYS FLOOD THE SIDE WINDOWS, LIGHTING THE SPACE (BOTH GROUND AND FIRST FLOORS) FROM THE SIDE AND PROVIDING THE MOST DIRECT SUNLIGHT INTO THE INTERIOR, HOWEVER OBSTRUCTIONS IN THE FORM OF RESTRICTED BRICKWORK COLUMNS WILL LIKELY DISTORT AND LIMIT LIGHT IN CERTAIN AREAS, CREATING PLAYFULLY AND SOMEWHAT DRAMATIC SHADOWS THROUGHOUT.
 ALTHOUGH RECEIVING FADING SUNSET RAYS IN THE SUMMER MONTHS, THE FRONT FACADE MAINLY RECEIVES MUCH OF ITS DIRECT SUNLIGHT AT THE END OF THE DAY, AND AS SUCH IT RELYS ON SOUTH-FACING WINDOWS TO THE SIDE. ALTHOUGH, CONSIDERATIONS REGARDING OBSTRUCTION FROM SURROUNDING PROPERTIES IS VITAL AS THE SITE ITSELF KEEPS A SMALLER STATURE TO ITS NEIGHBOURING COUNTERPARTS.
 INTERIOR PLACEMENT OF KEY SPACES (BEDROOM AND LIVING SPACES) SHOULD DO WELL TO WORK ALONGSIDE GENEROUS NATURAL LIGHT, ENSURING RESIDENTS REMAIN IN TOUCH WITH REALITY AND RETAIN INDIVIDUAL ROUTINES.
 SIDE SOUTH-FACING WINDOWS BALANCE THE NORTH-FACING FACADE, INTERIOR COLUMNS OBSTRUCT LIGHT, LEAVING VARIOUS SHADOW HIDDEN CORNERS
 INTERIOR COLUMNS LIMIT LIGHT IN CERTAIN AREAS, PARTICULARLY THE FAR BACK, ADDITIONAL LIGHTING MAY NEED TO BE CONSIDERED FOR SUITABLE INTERIOR AMBIENCE
 CHANGING WEATHER THROUGH THE SEASONS LIKELY SEES DAYS WHERE CLOUD COVER IS PRESENT, AS SUCH LIGHTING WILL BE OF A DIMMER SHADE
 OBVIOUS LACK OF NATURAL LIGHT IN THE BELOW GROUND LEVEL, MEANS LIGHTING WILL RELY ON ARTIFICIAL FIXTURES
 FURTHER CONSIDERATION FOR THE VARIOUS SUN POSITION AS THE SEASONS CHANGE SHOULD BE TAKEN INTO ACCOUNT, AS THE VOLUME OF DIRECT SUNLIGHT WILL LIKELY FLUCTUATE THROUGHOUT THE YEAR.
 INTERIOR BRICKWORK COLUMNS WILL CAUSE LIGHT OBSTRUCTIONS THROUGHTOUT, HOWEVER DUE TO THEIR RESTRICTION, ADDITIONAL LIGHTING MAY NEED TO BE ADDED TO DIMMISH SHADOW HIDDEN CORNERS.

CLARITY & COMMITMENT



DRAMA & EXCITEMENT



LIVE/WORK TRENDS ANALYSIS-

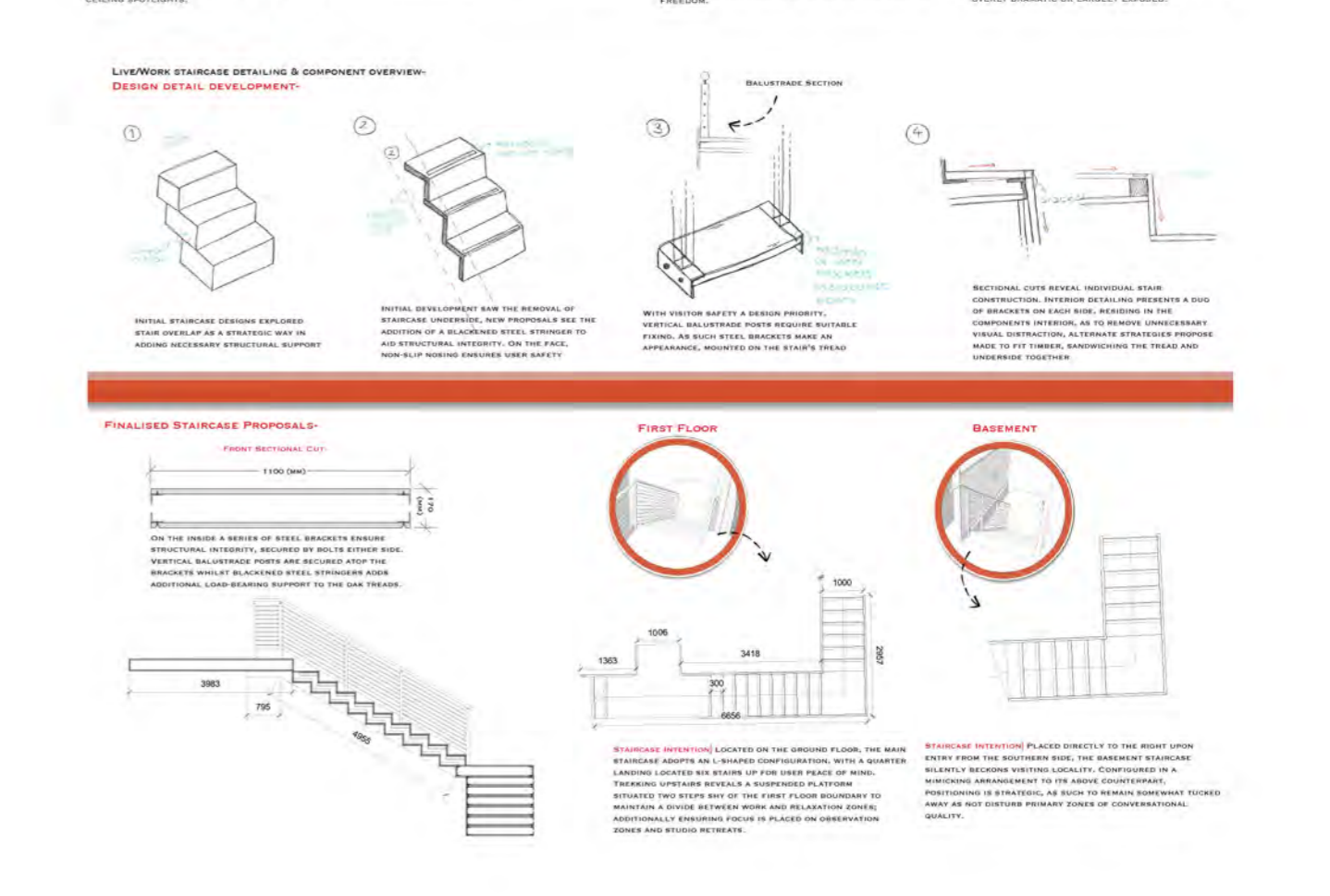
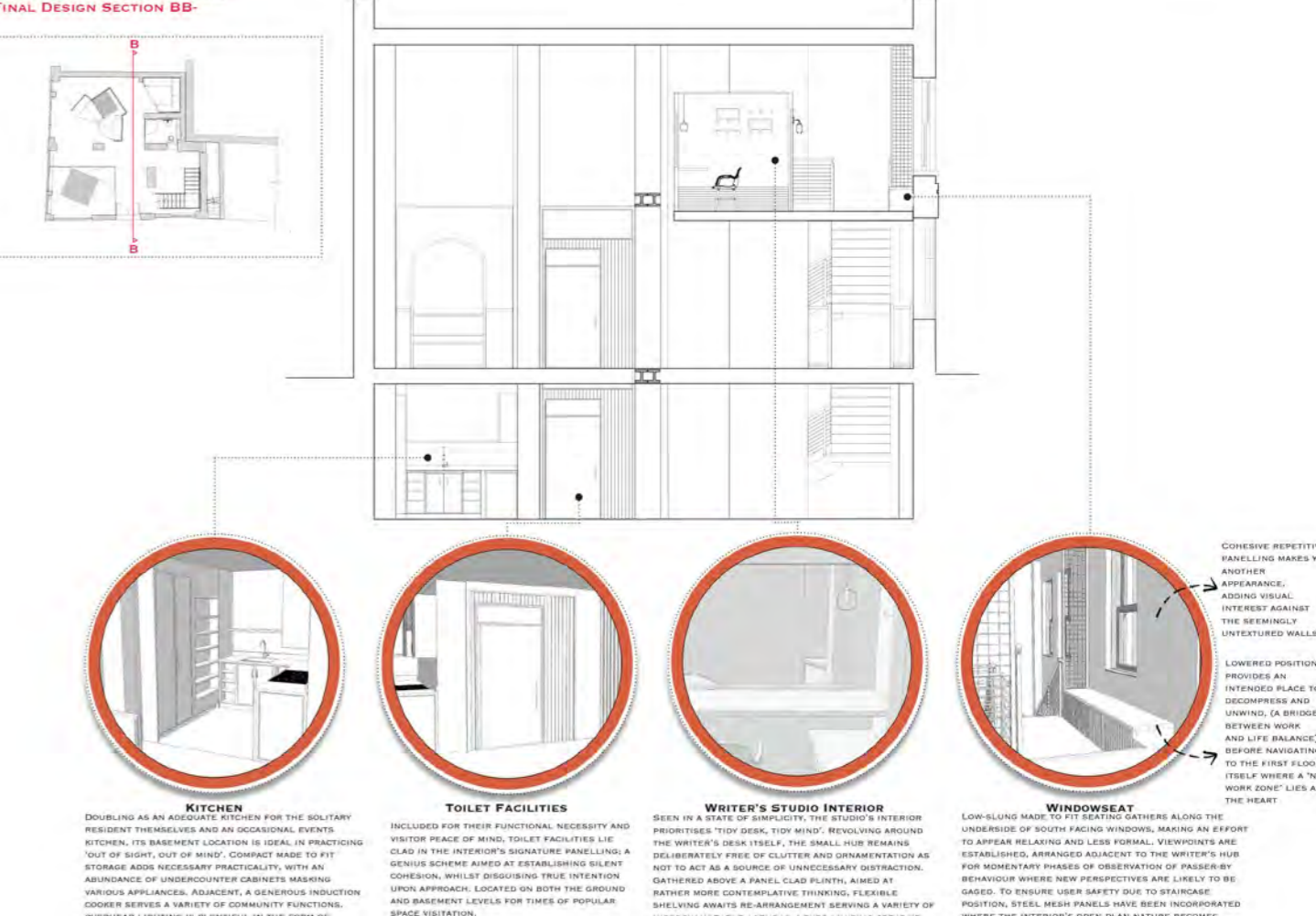
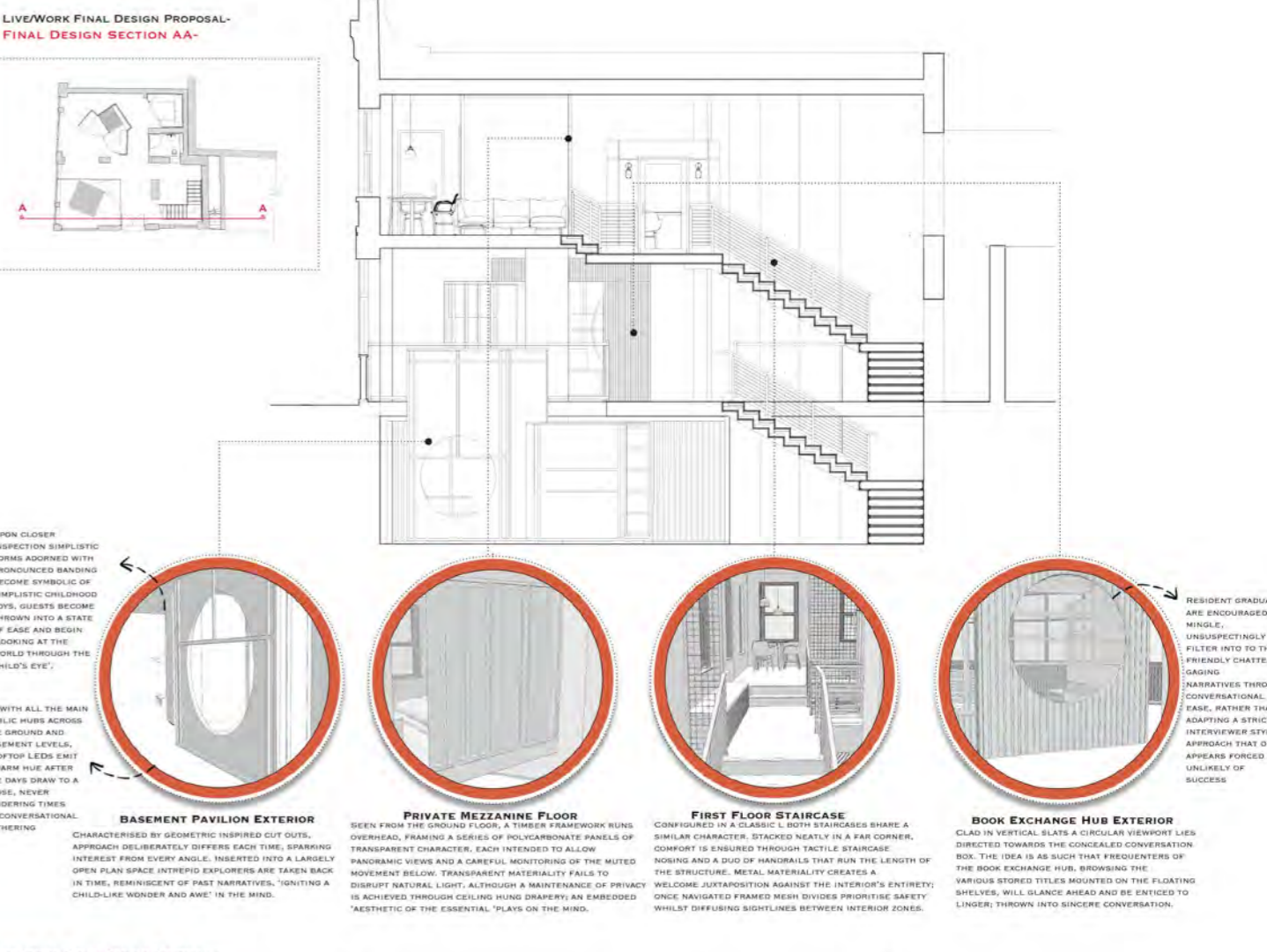
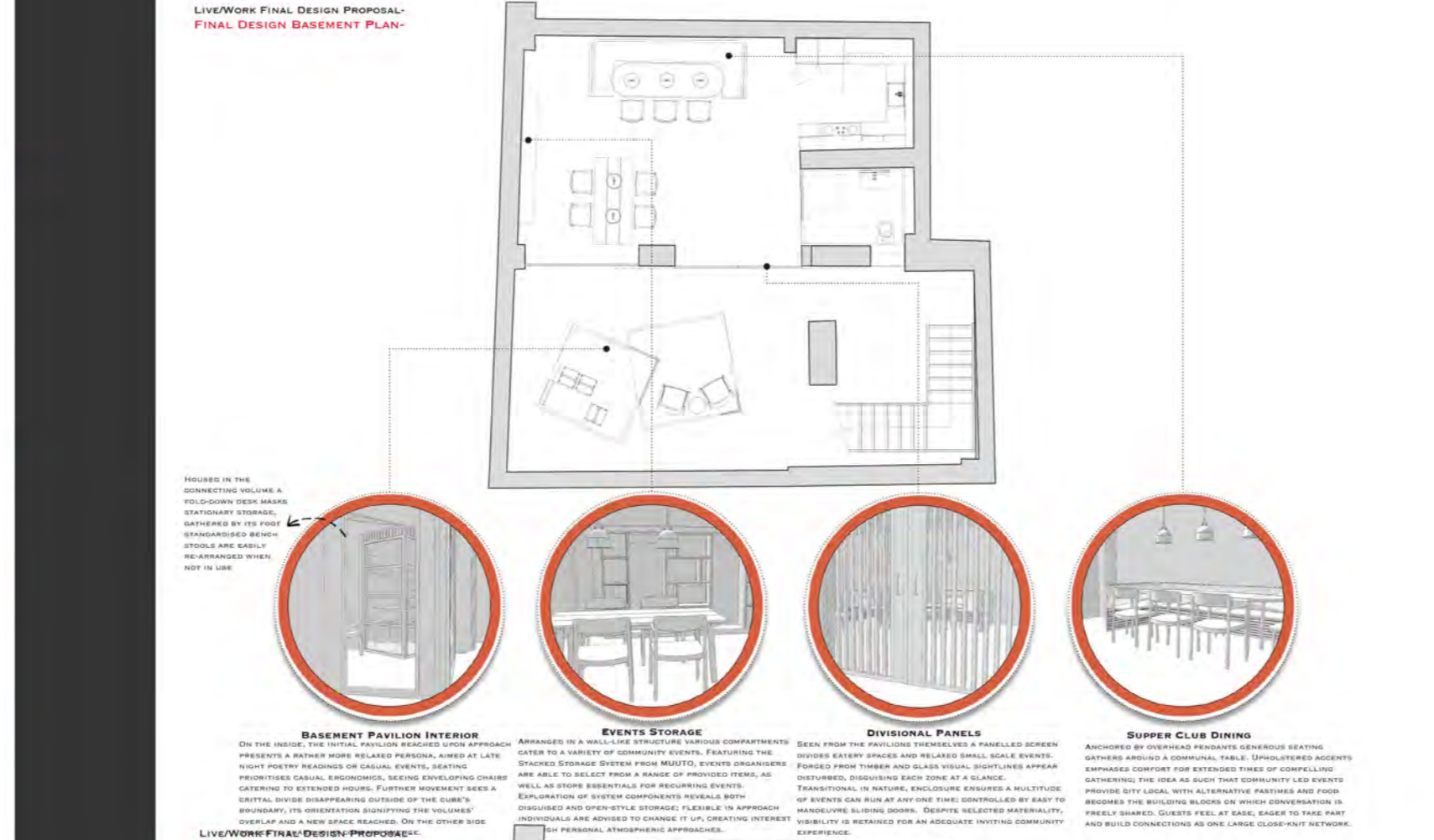
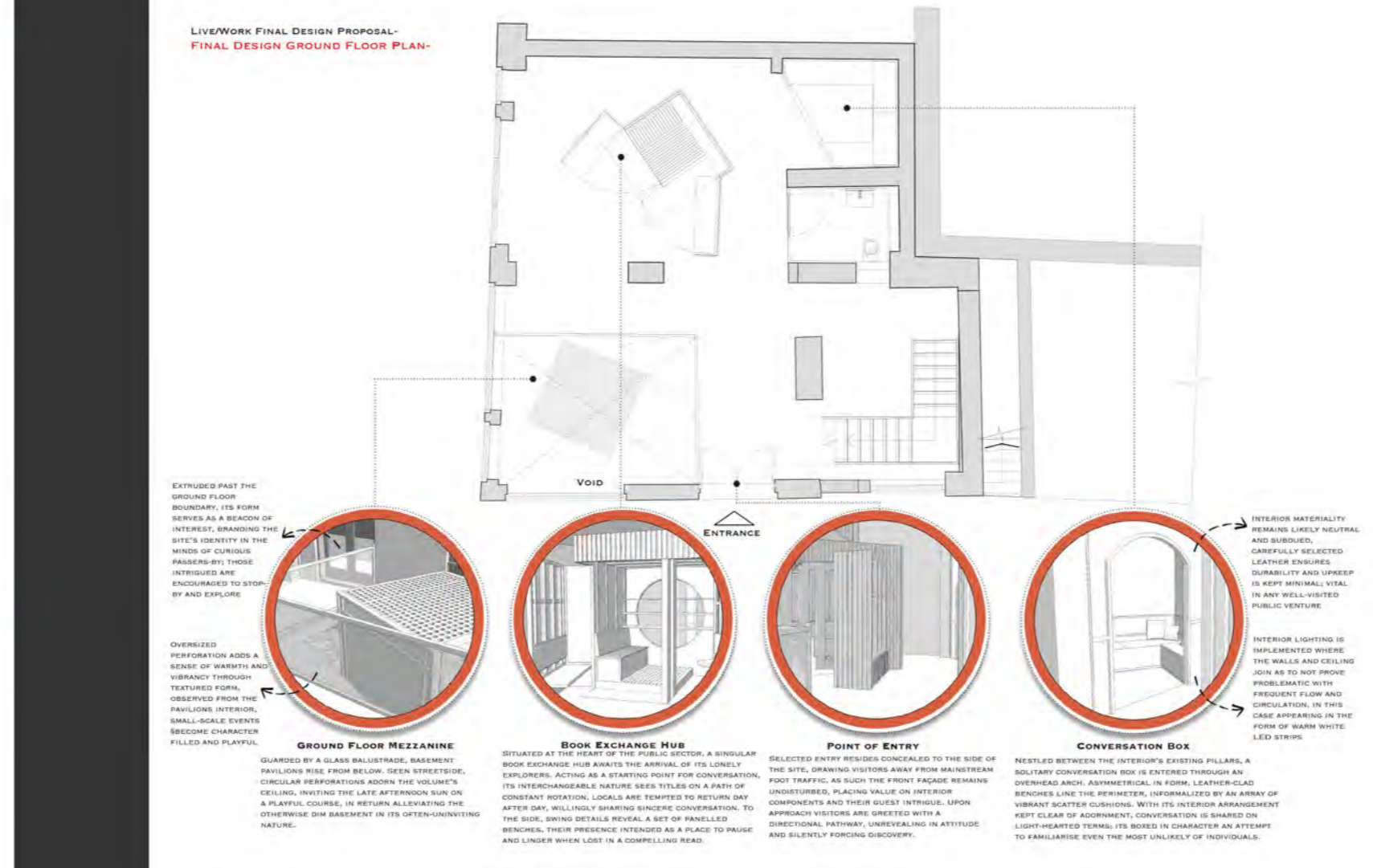
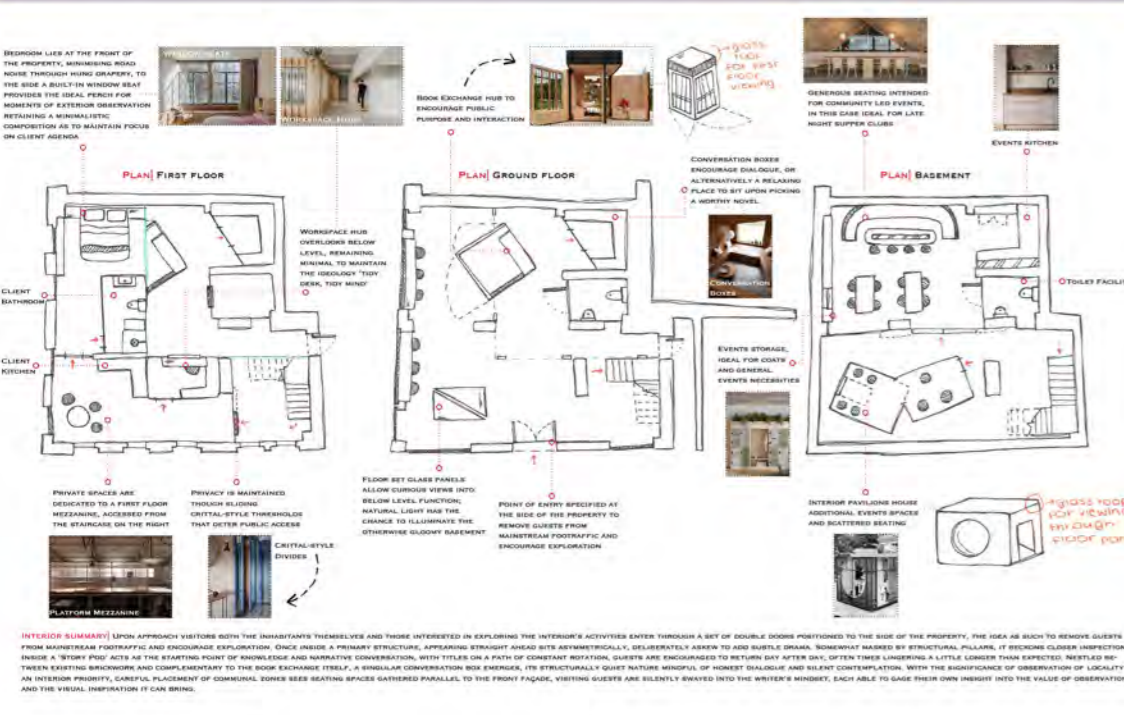
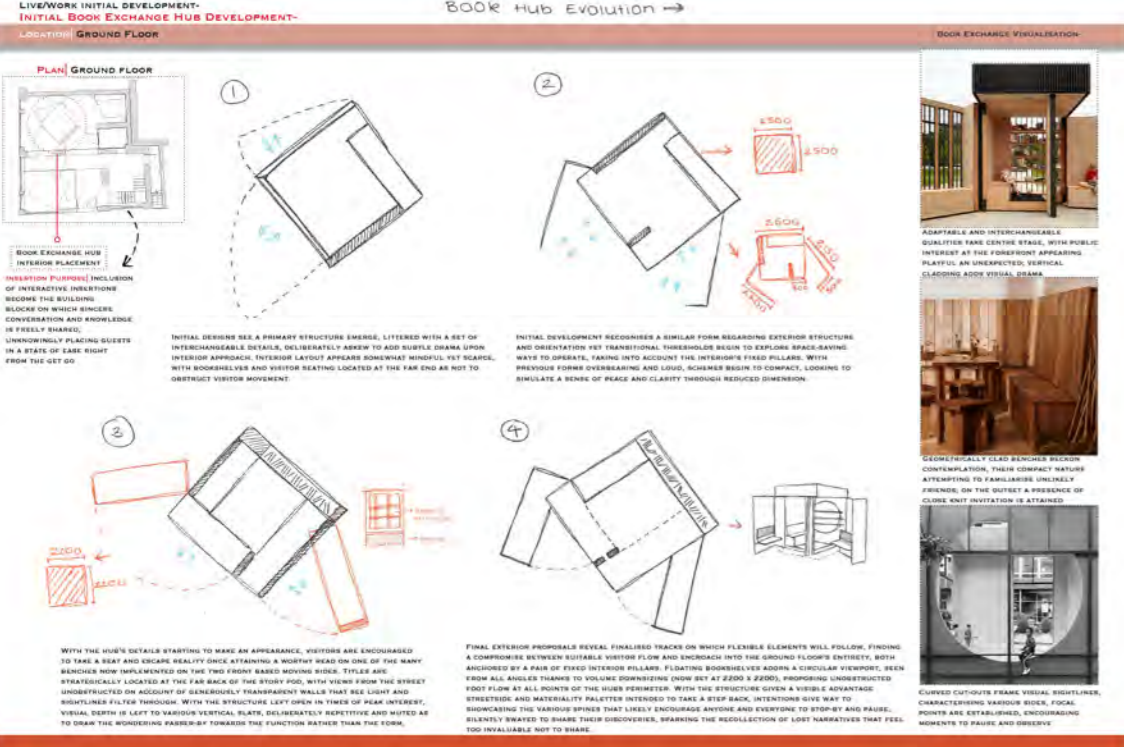
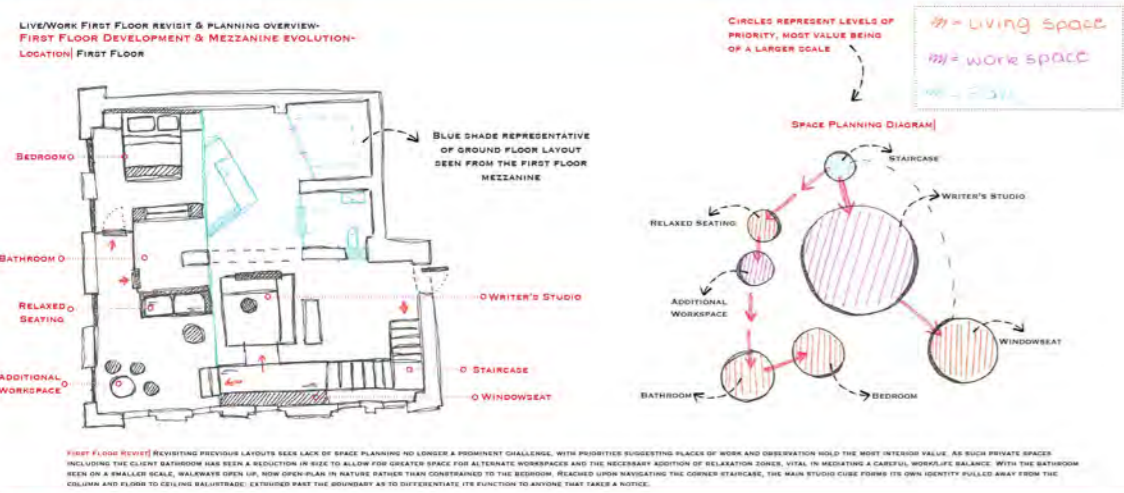
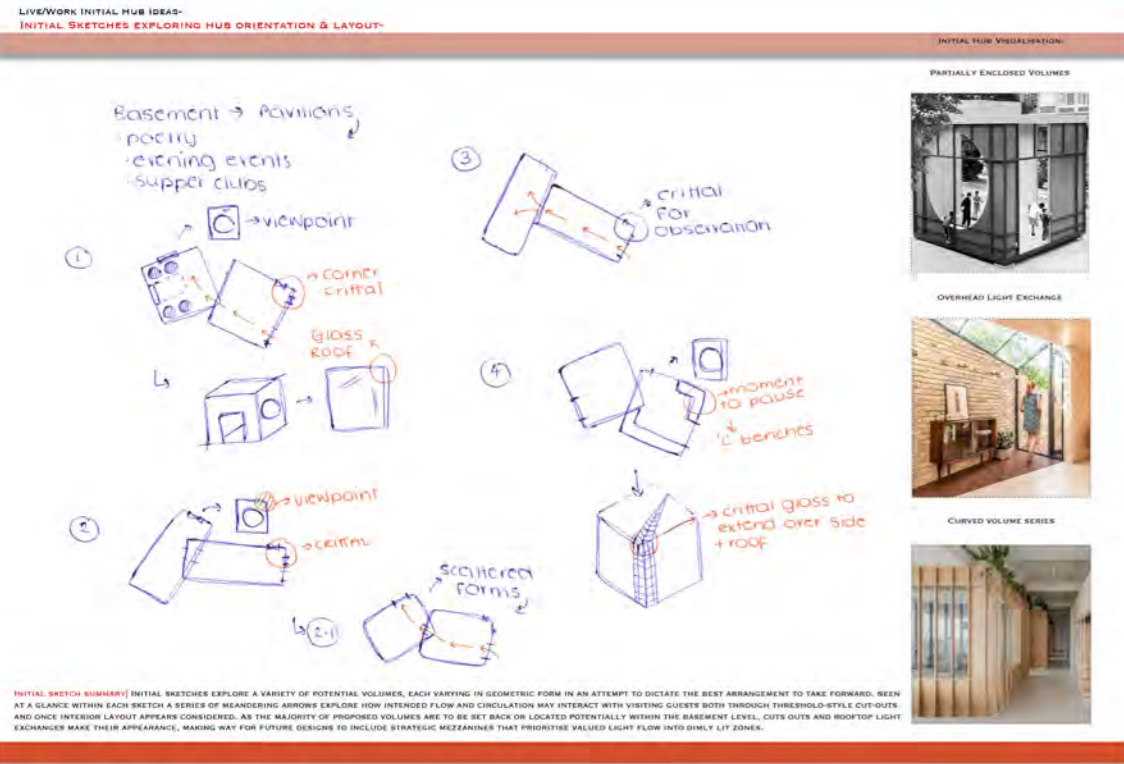
A COLLECTION OF VARIOUS WORKSPACE HUBS THAT SHARE UNIQUE DESIGN DETAILS- CLARITY AND COMMITMENT IS ACHIEVED THROUGH SOLITARY HUBS THAT PROMOTE SILENT OBSERVATION-
 INTERIOR STUDIOS LIGHTING WITH A HEAVY USE OF SILENT OBSERVATION, HANGING OVERHEAD IT BRINGS A DIMMING SHADE, FOCUSING ON THE TASK AT HAND
 DESPITE BEING OVERHEAD, ALIGNED ON EITHER SIDE OF THE HUB, THE STRUCTURE APPEARS PURE VISUAL AND SUBTLELY REVEALS, INSTANTLY ITS SUBTLELY VISUAL
 DESPITE ITS EXTERIOR PRESENCE, INTERIOR SPACES MAY CHOOSE TO USE BLUE METALLIC AS A HINT TO OBSERVE PUBLIC BEHAVIOUR, WITH THE OCCASIONAL BLURR OF A CREATIVE, VISUAL THOUGHT
 INTERIOR MATERIALITY REMAINS SUBTLE, BALANCING THE VISUAL COMPLEXITY OF THE STRUCTURE WITH HARD, RAW AND EARTHY IN TONE, MATERIALS APPEAR SILENT AND HONEST
 DINING FLOOR SLABS DIVIDE INTERIOR SPACES, REINFORCING INTERNAL SPACES THROUGH THE USE OF FORM AND RELATIONSHIP, STRUCTURAL COMMITMENT, BRINGING FLOW OF NATURAL LIGHT AS A SUBTLE THROUGHOUT
 DESPITE ITS UNUSUAL STRUCTURE, THE HUB'S VISUALITY FROM PUBLIC SPACES, IDEAL FOR SOLITARY OBSERVATION, CLARITY IN MATERIALITY, SUBTLELY REVEALS, IN PLACE HERE AS AN OBSERVATION OF THE SURROUNDING LANDSCAPE AND BEHAVIOUR, DISAPPEARS AS ONE OBSERVES THE LANDSCAPE, AS ONE OBSERVES THE PUBLIC OR PRIVATE VENTURES AT A MOMENT'S NOTICE, TO THE SIDE WINDOW OBSERVERS OVERLOOK THE SCENERY BELOW
 VISUAL UNITS, APPROACH A LIGHTWEIGHT FEEL, DESPITE BEING OVERHEAD, A VERTICAL STEEL BEAM, AS SUCH HELPS TO BRIDGE THE SPACE AND BRINGS VISIBILITY, DOES NOT FEEL OVERHEAD, BUT BRINGS WITH A LEVEL OF VISIBILITY FOR OBSERVATION, UPON THE BEHAVIOUR OF THE SOCIAL TABLE, THESE REVEALS POSITION AND VISIBILITY ENHANCES, PRESENTING FREEDOM RATHER THAN OBSCURE
 ALTHOUGH BEATING AS A SOLID, BEING IN THIS LOW PROFILE, BRINGING VISIBILITY AND RELIABILITY TO THE NARRATIVE TO BE OBSERVED
 CLAD IN BLACK STAINLESS PLATED, EXTERIOR STRUCTURES APPEAR PRESENT, BRINGING VISIBILITY TO INTEREST, DURING NONOBSERVABLE HOURS, PROVIDE INTEREST AND EXCITEMENT, THROUGH THE VISUALITY TO BE OBSERVED
 ADAPTIVE DETAILS ARE PLACED IN PUBLIC SPACES, BRINGING VISIBILITY TO INTEREST, DURING NONOBSERVABLE HOURS, PROVIDE INTEREST AND EXCITEMENT, THROUGH THE VISUALITY TO BE OBSERVED
 MEAN MATERIALITY IS SOMEWHAT HEAVY, AS IT MEET SURROUNDING SUBSTANTIATION, ADDITIONAL DETAILS ARE THE STEEL, AS AS SOME SORT OF VISUAL LANGUAGE, IDEAL FOR SILENT OBSERVATION OF SOCIAL BEHAVIOUR
 FURTHER VARIATION GIVES FLEXIBILITY AND WHITE, PROVIDING VISIBILITY TO INTEREST, DURING NONOBSERVABLE HOURS, PROVIDE INTEREST AND EXCITEMENT, THROUGH THE VISUALITY TO BE OBSERVED
 REVEAL FORM AND INTEREST AND PLACED IN PUBLIC SPACES, BRINGING VISIBILITY TO INTEREST, DURING NONOBSERVABLE HOURS, PROVIDE INTEREST AND EXCITEMENT, THROUGH THE VISUALITY TO BE OBSERVED
 OPENING OF THE INTERIOR INTO A DOUBLE-HEIGHT SPACE ALLOWS VISIBILITY TO INTEREST, DURING NONOBSERVABLE HOURS, PROVIDE INTEREST AND EXCITEMENT, THROUGH THE VISUALITY TO BE OBSERVED

LIVE/WORK TRENDS ANALYSIS SUMMARY-

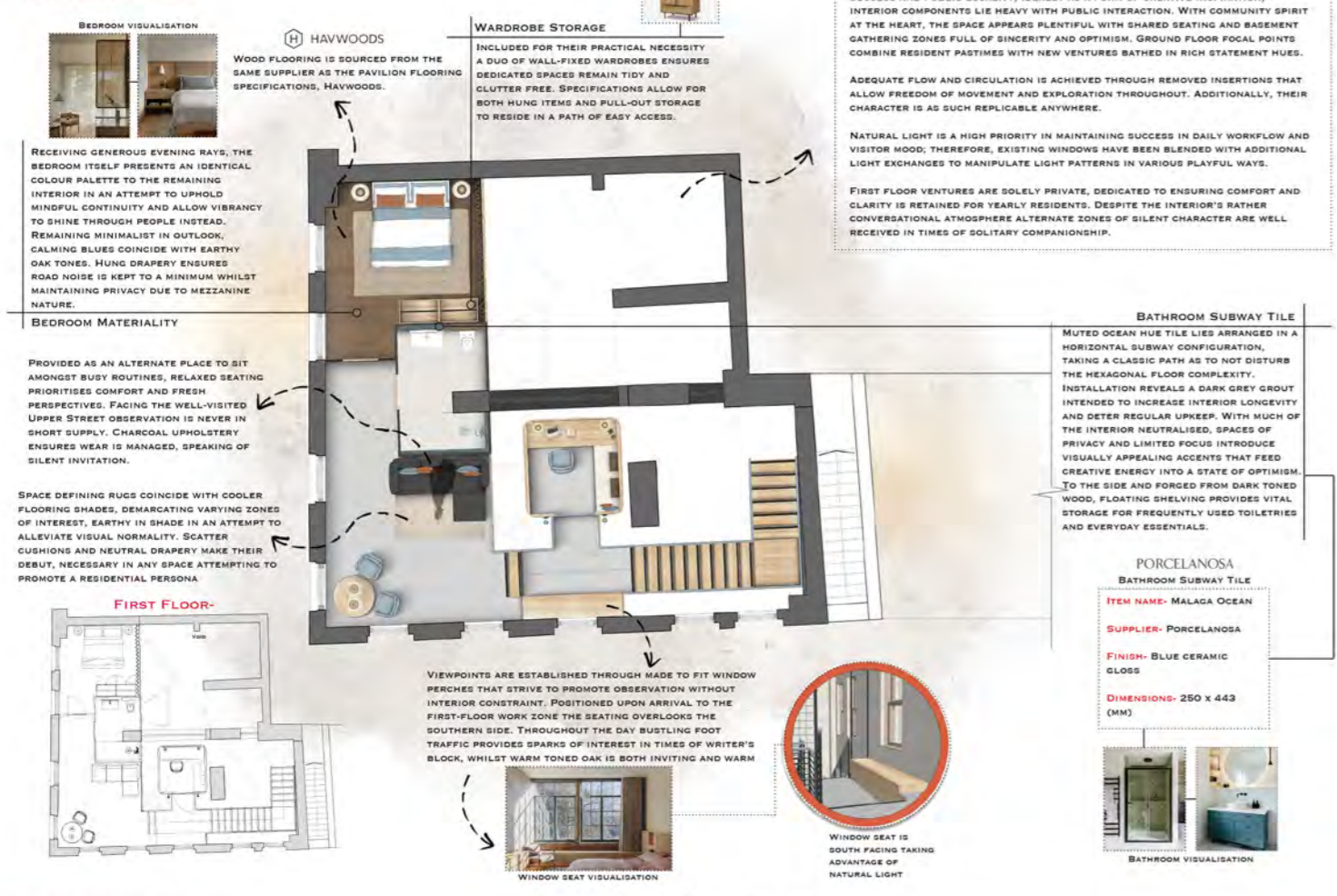


LIVE/WORK TRENDS ANALYSIS-

A COLLECTION OF VARIOUS PUBLIC READING SPACES THAT SHARE UNIQUE DESIGN DETAILS- NARRATIVES ARE REVEALED THROUGH SHARED EXPERIENCES AND SIMILAR INTERESTS THAT ENCOURAGE GUESTS TO VISIT-
 MEAN WITH PUBLIC SHARED AS A SOURCE OF INSPIRATION, THE USER TAKE ON A BOOK READING, INTERIOR SPACES ARE IDEAL FOR SOLITARY OBSERVATION, CLARITY AND COMMITMENT IS ACHIEVED THROUGH SOLITARY HUBS THAT PROMOTE SILENT OBSERVATION-
 THE EVENT PROVIDES AS A STARTING POINT FOR MINDFULNESS, ENCOURAGING AN INDIVIDUAL AND EVERYONE TO ENJOY THE MOMENT, BRINGING WITH A LEVEL OF VISIBILITY FOR OBSERVATION, UPON THE BEHAVIOUR OF THE SOCIAL TABLE, THESE REVEALS POSITION AND VISIBILITY ENHANCES, PRESENTING FREEDOM RATHER THAN OBSCURE
 INTERESTING MATERIALITY, BRINGING VISIBILITY TO INTEREST, DURING NONOBSERVABLE HOURS, PROVIDE INTEREST AND EXCITEMENT, THROUGH THE VISUALITY TO BE OBSERVED
 PRACTICAL MATERIALITY, BRINGING VISIBILITY TO INTEREST, DURING NONOBSERVABLE HOURS, PROVIDE INTEREST AND EXCITEMENT, THROUGH THE VISUALITY TO BE OBSERVED
 CONVERSATION BOARD, BRINGING VISIBILITY TO INTEREST, DURING NONOBSERVABLE HOURS, PROVIDE INTEREST AND EXCITEMENT, THROUGH THE VISUALITY TO BE OBSERVED
 VISUAL UNITS, APPROACH A LIGHTWEIGHT FEEL, DESPITE BEING OVERHEAD, A VERTICAL STEEL BEAM, AS SUCH HELPS TO BRIDGE THE SPACE AND BRINGS VISIBILITY, DOES NOT FEEL OVERHEAD, BUT BRINGS WITH A LEVEL OF VISIBILITY FOR OBSERVATION, UPON THE BEHAVIOUR OF THE SOCIAL TABLE, THESE REVEALS POSITION AND VISIBILITY ENHANCES, PRESENTING FREEDOM RATHER THAN OBSCURE
 INTERIOR STUDIOS LIGHTING WITH A HEAVY USE OF SILENT OBSERVATION, HANGING OVERHEAD IT BRINGS A DIMMING SHADE, FOCUSING ON THE TASK AT HAND
 DESPITE BEING OVERHEAD, ALIGNED ON EITHER SIDE OF THE HUB, THE STRUCTURE APPEARS PURE VISUAL AND SUBTLELY REVEALS, INSTANTLY ITS SUBTLELY VISUAL
 DESPITE ITS EXTERIOR PRESENCE, INTERIOR SPACES MAY CHOOSE TO USE BLUE METALLIC AS A HINT TO OBSERVE PUBLIC BEHAVIOUR, WITH THE OCCASIONAL BLURR OF A CREATIVE, VISUAL THOUGHT
 INTERIOR MATERIALITY REMAINS SUBTLE, BALANCING THE VISUAL COMPLEXITY OF THE STRUCTURE WITH HARD, RAW AND EARTHY IN TONE, MATERIALS APPEAR SILENT AND HONEST
 DINING FLOOR SLABS DIVIDE INTERIOR SPACES, REINFORCING INTERNAL SPACES THROUGH THE USE OF FORM AND RELATIONSHIP, STRUCTURAL COMMITMENT, BRINGING FLOW OF NATURAL LIGHT AS A SUBTLE THROUGHOUT
 DESPITE ITS UNUSUAL STRUCTURE, THE HUB'S VISUALITY FROM PUBLIC SPACES, IDEAL FOR SOLITARY OBSERVATION, CLARITY IN MATERIALITY, SUBTLELY REVEALS, IN PLACE HERE AS AN OBSERVATION OF THE SURROUNDING LANDSCAPE AND BEHAVIOUR, DISAPPEARS AS ONE OBSERVES THE LANDSCAPE, AS ONE OBSERVES THE PUBLIC OR PRIVATE VENTURES AT A MOMENT'S NOTICE, TO THE SIDE WINDOW OBSERVERS OVERLOOK THE SCENERY BELOW
 VISUAL UNITS, APPROACH A LIGHTWEIGHT FEEL, DESPITE BEING OVERHEAD, A VERTICAL STEEL BEAM, AS SUCH HELPS TO BRIDGE THE SPACE AND BRINGS VISIBILITY, DOES NOT FEEL OVERHEAD, BUT BRINGS WITH A LEVEL OF VISIBILITY FOR OBSERVATION, UPON THE BEHAVIOUR OF THE SOCIAL TABLE, THESE REVEALS POSITION AND VISIBILITY ENHANCES, PRESENTING FREEDOM RATHER THAN OBSCURE
 ALTHOUGH BEATING AS A SOLID, BEING IN THIS LOW PROFILE, BRINGING VISIBILITY AND RELIABILITY TO THE NARRATIVE TO BE OBSERVED
 CLAD IN BLACK STAINLESS PLATED, EXTERIOR STRUCTURES APPEAR PRESENT, BRINGING VISIBILITY TO INTEREST, DURING NONOBSERVABLE HOURS, PROVIDE INTEREST AND EXCITEMENT, THROUGH THE VISUALITY TO BE OBSERVED
 ADAPTIVE DETAILS ARE PLACED IN PUBLIC SPACES, BRINGING VISIBILITY TO INTEREST, DURING NONOBSERVABLE HOURS, PROVIDE INTEREST AND EXCITEMENT, THROUGH THE VISUALITY TO BE OBSERVED
 MEAN MATERIALITY IS SOMEWHAT HEAVY, AS IT MEET SURROUNDING SUBSTANTIATION, ADDITIONAL DETAILS ARE THE STEEL, AS AS SOME SORT OF VISUAL LANGUAGE, IDEAL FOR SILENT OBSERVATION OF SOCIAL BEHAVIOUR
 FURTHER VARIATION GIVES FLEXIBILITY AND WHITE, PROVIDING VISIBILITY TO INTEREST, DURING NONOBSERVABLE HOURS, PROVIDE INTEREST AND EXCITEMENT, THROUGH THE VISUALITY TO BE OBSERVED
 REVEAL FORM AND INTEREST AND PLACED IN PUBLIC SPACES, BRINGING VISIBILITY TO INTEREST, DURING NONOBSERVABLE HOURS, PROVIDE INTEREST AND EXCITEMENT, THROUGH THE VISUALITY TO BE OBSERVED
 OPENING OF THE INTERIOR INTO A DOUBLE-HEIGHT SPACE ALLOWS VISIBILITY TO INTEREST, DURING NONOBSERVABLE HOURS, PROVIDE INTEREST AND EXCITEMENT, THROUGH THE VISUALITY TO BE OBSERVED



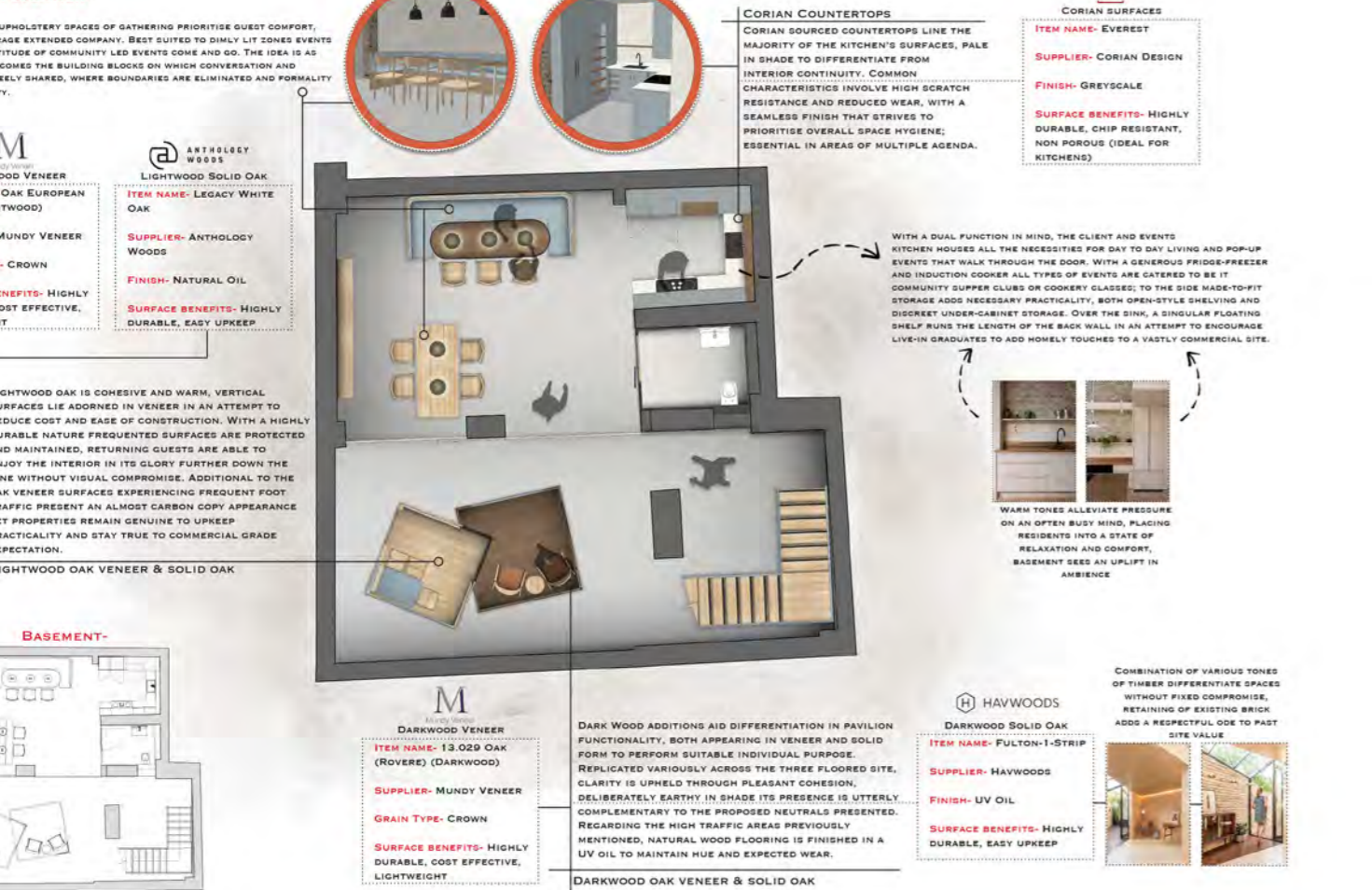
LIVE/WORK FINAL PLAN RENDER- FIRST FLOOR PLAN- FULL PLAN OVERVIEW-



LIVE/WORK FINAL PLAN RENDER- GROUND FLOOR PLAN- FULL PLAN OVERVIEW-



LIVE/WORK FINAL PLAN RENDER- BASEMENT PLAN- FULL PLAN OVERVIEW-



STRUCTURE & SHAPE WITH AN INTENTION TO MEDIATE A SUCCESSFUL RELATIONSHIP BETWEEN INDIVIDUAL SUCCESS AND PUBLIC LOCALITY...

BATHROOM SUBWAY TILE MUTED OCEAN HUE TILE LIES ARRANGED IN A HORIZONTAL SUBWAY CONFIGURATION...

PORCELANOSA BATHROOM SUBWAY TILE ITEM NAME: MALAGA OCEAN SUPPLIER: PORCELANOSA FINISH: BLUE CERAMIC GLOSS...

CORTINA LEATHER UPHOLSTERY ITEM NAME: BRANDENBURG PRODUCT CODE: 61-34 SUPPLIER: CORTINA LEATHERS FINISH: HONEY...

NASCO BATHROOM TILE ITEM NAME: AURORA WHITE Mosaic 2" Mosaic SUPPLIER: NASCO FINISH: HONEY...

BATHROOM TILE DRAMATIC HUES ENHANCE INTERIOR APPEAL, AT A CONTRAST WITH THE REMAINING INTERIOR PALETTE...

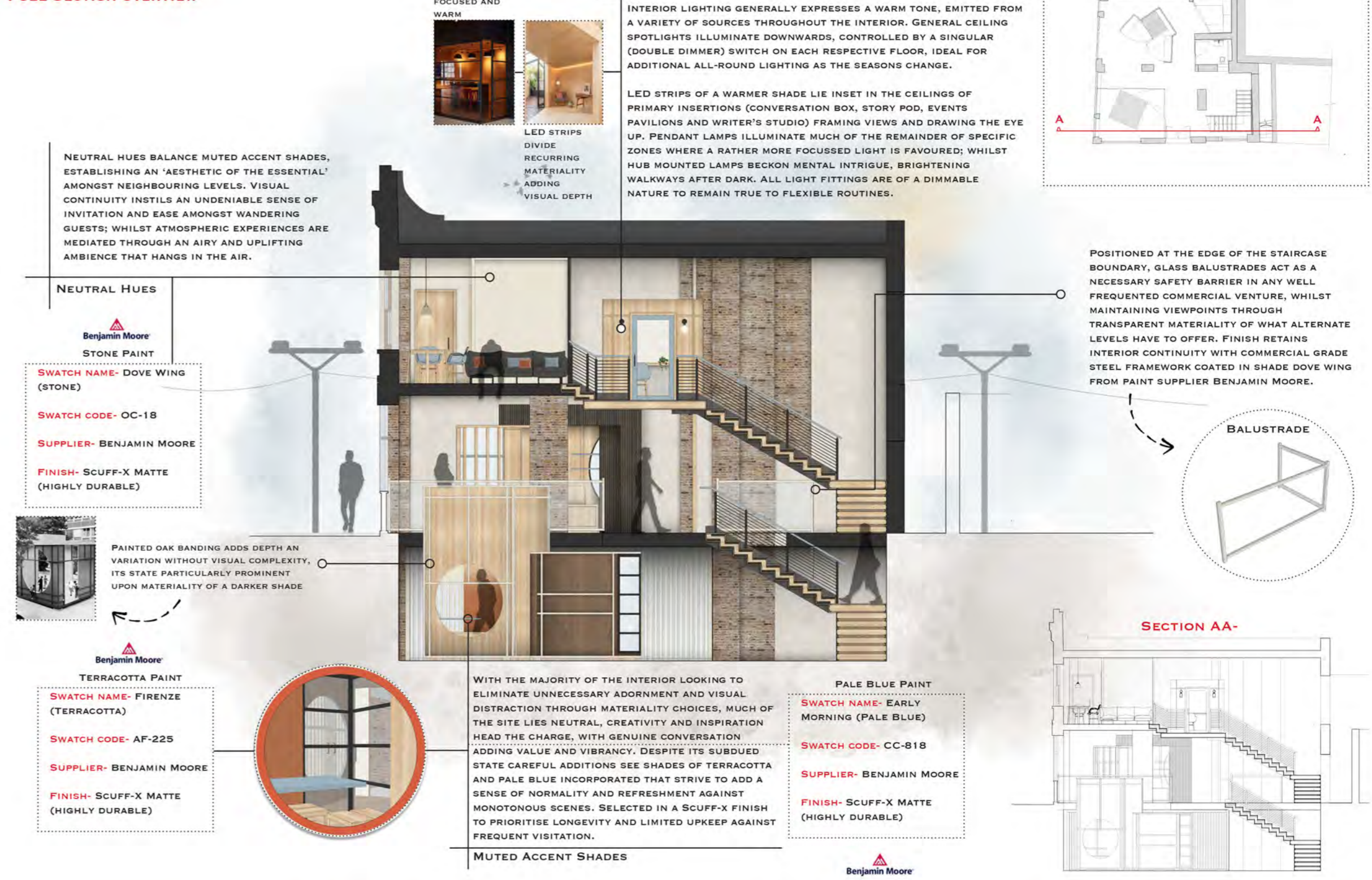
BLACK PAINT ITEM NAME: BLACK SWATCH NAME: BLACK SWATCH CODE: HC-190 SUPPLIER: BENJAMIN MOORE FINISH: SCUFF-X MATTE (HIGHLY DURABLE)...

CORIAN SURFACES ITEM NAME: EVEREST SUPPLIER: CORIAN DESIGN FINISH: GREYSCALE SURFACE BENEFITS: HIGHLY DURABLE, CHIP RESISTANT, NON POREOUS (IDEAL FOR KITCHENS)...

WARM TONES ALLEVIATE PRESSURE ON AN OFFER BUSY WING, PLACING RESIDENTS INTO A STATE OF RELAXATION AND COMFORT...

HAYWOODS DARKWOOD SOLID OAK ITEM NAME: FULTON-1-STRIP SUPPLIER: HAYWOODS FINISH: UV OIL SURFACE BENEFITS: HIGHLY DURABLE, EASY UPKEEP...

LIVE/WORK FINAL SECTION RENDER- SECTION AA- FULL SECTION OVERVIEW-



NEUTRAL HUES BALANCE MUTED ACCENT SHADES, ESTABLISHING AN 'AESTHETIC OF THE ESSENTIAL' AMONGST NEIGHBOURING LEVELS...

STONE PAINT SWATCH NAME: DOVE WING (STONE) SWATCH CODE: OC-18 SUPPLIER: BENJAMIN MOORE FINISH: SCUFF-X MATTE (HIGHLY DURABLE)...

TERRACOTTA PAINT SWATCH NAME: FIRENZE (TERRACOTTA) SWATCH CODE: AF-225 SUPPLIER: BENJAMIN MOORE FINISH: SCUFF-X MATTE (HIGHLY DURABLE)...

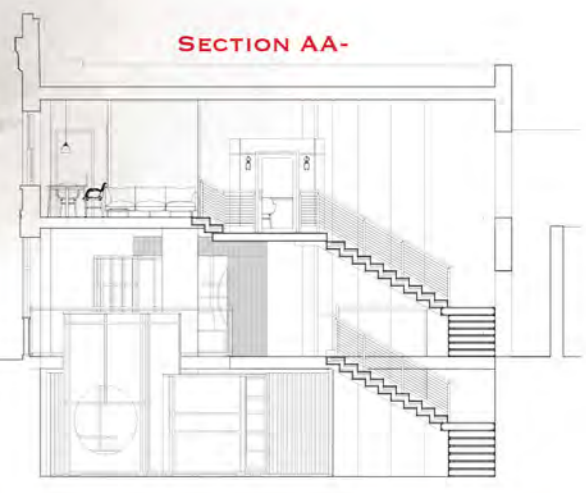
PALE BLUE PAINT SWATCH NAME: EARLY MORNING (PALE BLUE) SWATCH CODE: CC-818 SUPPLIER: BENJAMIN MOORE FINISH: SCUFF-X MATTE (HIGHLY DURABLE)...

DOWNLIT PENDANTS ARE FOCUSED AND WARM LED STRIPS DIVIDE RECURRING MATERIALITY ADDING VISUAL DEPTH

INTERIOR LIGHTING INTERIOR LIGHTING GENERALLY EXPRESSES A WARM TONE, EMITTED FROM A VARIETY OF SOURCES THROUGHOUT THE INTERIOR...

LED STRIPS OF A WARMER SHADE LIE INSET IN THE CEILING OF PRIMARY INSERTIONS (CONVERSATION BOX, STORY POD, EVENTS PAVILIONS AND WRITER'S STUDIO) FRAMING VIEWS AND DRAWING THE EYE UP...

POSITIONED AT THE EDGE OF THE STAIRCASE BOUNDARY, GLASS BALUSTRADES ACT AS A NECESSARY SAFETY BARRIER IN ANY WELL FREQUENTED COMMERCIAL VENTURE...



LIVE/WORK COMPONENT MATERIALITY & DESIGN DETAIL OVERVIEW-

DESIGN DETAIL OVERVIEW-
WRITER'S STUDIO-

ACOUSTIC PANNELLING IS A WELCOME ADDITION IN ZONES OF SOLITARY COMPANIONSHIP, SEEMING EARTHY IN SHADE, APPEARANCES REMAIN NEUTRAL AND UNDISTURBED

SIDE WINDOWS OPEN ON COMMAND, CONSTRAINED TO ENSURE USER SAFETY AND EASE OF ACCESS, INTENTIONS SUGGEST LESS AS A FORM OF VISUAL OBSERVATION AND INSTEAD A SOURCE OF SOLITARY AUDITORY INSPIRATION

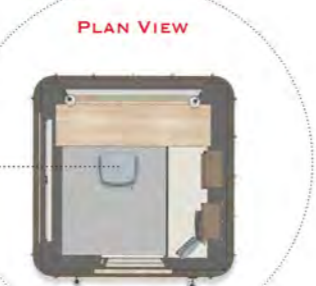
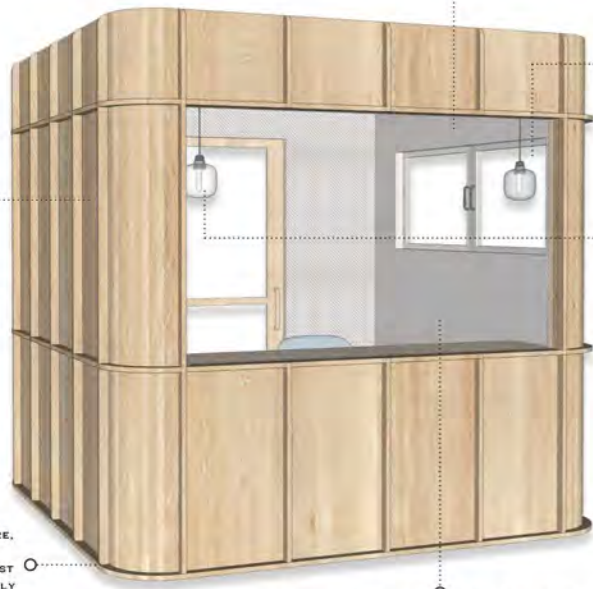
OVERHEAD PENDANT LIGHTING SIGNALS HUB FUNCTION TO GROUND FLOOR OBSERVERS, WHILST INTERIORS GAIN A FAVOURED SOURCE OF WARMTH THAT APPEARS FOCUSED AND INTENTIONAL

MUTED BLUE UPHOLSTERY MAINTAINS AN AIR OF CLARITY AND EASE, PROMOTING ADEQUATE COMFORT FOR HOURS ON END, IDEAL FOR EXTENDED WORK DAY ROUTINES

OVERLOOKING MOVEMENT BELOW A GENEROUS WINDOW SEES VIEWS NEVER COMPROMISED, WHEN FOCUSED WRITING IS APOOF, OBSERVED WRITERS ARE ABLE TO GLANCE AND OBSERVE AT A MOMENTS, NOTICE SPARKING INSPIRATION IN TIMES OF CREATIVE CONTEMPLATION

FORGED FROM LIGHTWOOD THE PERCHED STUDIO BECOMES SOMEWHAT BIRD BOX-LIKE IN CHARACTER, CURVED IN FORM TO STRAY AWAY FROM ITS NEIGHBOURING HUBS; THROUGH INTENTIONS REMAIN STRICT PRIORITISING A SINCERE AND MINDFUL PALETTE THAT BLENDS AND CAMOUFLAGES

OUTSET BANDING ADDS VISUAL DEPTH AND TEXTURE, OUTLINING THE STUDIO'S CURVED STRUCTURE, WHILST COMPLEMENTING THE VASTLY SUBTLED PALETTE THAT WELCOMES SUBTLE SIMPLICITY VIBRANCY



WRITER'S STUDIO INTENTION NESTLED BETWEEN THE SITES EXISTING COLUMNS, THE STUDIO HUB RESEMBLES SOMEWHAT OF AN URBAN WRITER'S RETREAT THAT PRACTICES SOLITUDE AND CLARITY FROM THE OUTSET. SEEN IN A STATE OF SIMPLICITY, VISUAL DISTRACTION IS ERADICATED, INSTEAD FOCUS IS CENTRED SOLELY AROUND THE WRITER'S DESK ITSELF WHICH LIES FREE FROM EXCESSIVE ORNAMENTATION AND CLUTTER; AN EXPECTATION THAT NEW PERSPECTIVES CAN BE GAGED FRESH EACH TIME. WITH A CLEAN SLATE AWAITING ACROSS THE THRESHOLD, ACOUSTIC PANNELLING ADORNS THE INTERIOR'S ENTIRETY TO MAINTAIN AN INTROVERTED ATMOSPHERE, WHILST PEGBOARD SHELVING IS SPACE SAVING AND FLEXIBLE. BELOW A RAISED PLINTH RISES FROM THE FLOOR, PROVIDING AN ALTERNATE PLACE TO SIT AMONGST PACKED ROUTINES. SUMMARIES SUGGEST OBSERVATION LIES AT THE FOREFRONT, SOLIDIFYING THE HUB'S BOUNDS, BACKED BY AN APPROACH THAT HANGS RATHER MINDFUL IN ATTITUDE AND NUDGES AT PAST NARRATIVES OF DENS AND FORTS THAT PREVIOUSLY INSPIRED US AS CHILDREN.

LIVE/WORK COMPONENT MATERIALITY & DESIGN DETAIL OVERVIEW-

DESIGN DETAIL OVERVIEW-
BOOK EXCHANGE HUB-

OF AN EVENING AND AS THE DAY MOVES FORWARD, DOWNLIT WARM WHITE LEDS ILLUMINATE BELOW ACTIVITY, POSITIONED BOTH ON THE HUB'S CEILING AND THE UNDERSIDE OF THE BOOKSHELVES THEMSELVES

BLACK PAINT ENHANCES INTERIOR APPEAL, UPON APPROACH DRAMATIC AND ADDING VISUAL CONTRAST; WANDERING GUESTS BECOME IMMEDIATELY INTRIGUED AND ENCOURAGED TO EXPLORE

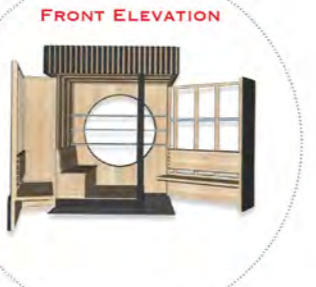
CIRCULAR VIEWPORT MAINTAINS A LINK BETWEEN MAIN HUB AND CONVERSATION BOX, SILENTLY ENCOURAGING READERS TO LINGER AND SHARE

SLANTED BACKSETS ENSURE ERGONOMICS ARE SUITABLY CONSIDERED, BECKONING GUESTS TO LINGER AND GET LOST IN A WORTHY READ

INTERIOR CONTINUITY IS UPHELD THROUGH AN UPKEEP OF SIMILAR TONED TIMBER THROUGHOUT, WARM IN SHADE, CHARACTERFULLY ENTICING AND A FORM OF SILENT INVITATION

LEVEL DIFFERENTIATION SIGNALS A SHIFT IN INTENTION, DIVIDING BROWSING AND READING ZONES, SLANTED DECKING ADDS DEPTH AND VARIATION AGAINST ALIKE MATERIALITY

MUTED BLUE ACCENTS DETER VISUAL MONOTONY, PAINTED IN A SCUFF'N' FINISH TO MAINTAIN ESSENTIAL DURABILITY IN HIGH TRAFFIC AREAS



HUB INTENTION POSITIONED IN DIRECT FIELD OF VIEW UPON APPROACH, THE STORY POD AWAILS THE ARRIVAL OF ITS LONELY EXPLORERS. CLOAKED IN A DRAMATIC SHADE, THE VOLUME ENTICES RIGHT FROM THE GET GO; ON THE INSIDE LIGHT-WOOD MATERIALITY WELCOMES AND UPLIFTS. INTERCHANGEABLE TITLES RESIDE ATOP CENTRED FLOATING SHELVES, WITH THEIR CHARACTER NEVER REMAINING SET, ON A PATH OF CONSTANT ROTATION, NEIGHBOURHOOD LOCALITY IS ENCOURAGED TO POP-UP AND RETURN, TEMPTED BY THE SUBTLETY OF ITS UNKNOWN NATURE. WITH ITS POSITION ORIENTED TOWARDS THE FRONT FAÇADE, THE POD BECOMES SOMEWHAT OF AN URBAN LANDMARK, A COMMUNITY HOTSPOT OF CONNECTION AND UNDERSTANDING. AS THE DAY DRAWS TO A CLOSE APPEARANCES SHIFT, ILLUMINATIONS REMAIN WARM, BRANDING THE SITE'S INTENT AND ENCOURAGING PASSER-BY INTERACTION THAT LOOKS TO RETURN DAY AFTER DAY.

LOCATION | FIRST FLOOR



WRITER'S STUDIO VISUALISATION-



LIVE/WORK FIRST FLOOR MAIN LIVING SPACE SPECIFICATIONS-
DETAILED OVERVIEW OF FURNITURE & FINISHES-



LIVING ROOM RELATED SEATING (OFF MARKET)
ITEM NAME: SOFA
SUPPLIER: NORMANN COPENHAGEN
LOCATION: FIRST FLOOR LIVING SPACE
DETAILS: FEATURES: MODULAR COMPONENTS, PARTICULARLY CHAIRS, ADDITIONAL AND NECESSARY COMPONENTS ADDED HIGH AND LOW DENSITY FLOORING (SEE LIVING SPACE) TO THE STUDIO, LEAD UPHOLSTERY MINIMISES VISUAL NOISE
FINISH: BLACK STEEL FRAMEWORK, FINISHED IN UPHOLSTERY BRUSH-PAINTED, COATED IN MICROCHAMBER FOR ADDED DURABILITY
DIMENSIONS: 170 x 200 x 100 (DIMENSIONS)
QUANTITY (PER SITE): 1

BED
ITEM NAME: BED
SUPPLIER: BIRMA ITALIA
LOCATION: FIRST FLOOR BEDROOM
FINISH: MAIN FRAME AND HEADBOARD DONE UPHOLSTERY, FINISHED IN BRUSH TAILIN 21
DIMENSIONS: 2000 x 2400 x 900 (DIM)
QUANTITY (PER SITE): 1
COST: ENQUIRY REQUIRED (PER UNIT)

ROUND COFFEE TABLE
ITEM NAME: ROUND COFFEE TABLE
SUPPLIER: MUUTO
LOCATION: FIRST FLOOR BEDROOM, BASEMENT PAVILION
FINISH: OAK VENEER WITH BROWN OAK LEGS, FINISHED WITH WATER BASED LACQUER (LEFT IN NATURAL FINISH)
DIMENSIONS: 850 (DIM)
QUANTITY (PER SITE): 3
COST: £380 (PER UNIT)



SEATING UPHOLSTERY
ITEM NAME: SEATING UPHOLSTERY
SUPPLIER: NORMANN COPENHAGEN
LOCATION: FIRST FLOOR MEZZANINE AND FIRST FLOOR WRITER'S STUDIO
FINISH: OAK FRAMEWORK, FINISHED IN UPHOLSTERY BRUSH-PAINTED, COATED IN MICROCHAMBER FOR ADDED DURABILITY
DIMENSIONS: 800 x 560 x 820 (DIM)
QUANTITY (PER SITE): 3
COST: £880 (PER UNIT)

SEATING UPHOLSTERY
ITEM NAME: SEATING UPHOLSTERY
SUPPLIER: NORMANN COPENHAGEN
LOCATION: FIRST FLOOR MEZZANINE AND FIRST FLOOR WRITER'S STUDIO
FINISH: OAK FRAMEWORK, FINISHED IN UPHOLSTERY BRUSH-PAINTED, COATED IN MICROCHAMBER FOR ADDED DURABILITY
DIMENSIONS: 800 x 560 x 820 (DIM)
QUANTITY (PER SITE): 3
COST: £880 (PER UNIT)

SLICE TABLE
ITEM NAME: SLICE TABLE
SUPPLIER: NORMANN COPENHAGEN
LOCATION: FIRST FLOOR MEZZANINE
FINISH: OAK VENEER TABLETOP, OAK LEG FRAMEWORK, FINISHED IN NATURAL TREATMENT
DIMENSIONS: 980 (DIM)
QUANTITY (PER SITE): 1
COST: £1,200 (PER UNIT)



DINING SPACE SEATING
ITEM NAME: DINING SPACE SEATING
SUPPLIER: NORMANN COPENHAGEN
LOCATION: BASEMENT DINING SPACE
DETAILS: FEATURES: FEATURING AN INDEPENDENTLY CURVED BACK AND WIDE SEAT, THE CHAIR IS MADE IDEAL FOR EXTENSIVE SEATING CAPACITY
FINISH: PUNISHED AND LAQUERED, ANL 100
DIMENSIONS: 820 x 560 x 810 (DIM)
QUANTITY (PER SITE): 7
COST: £420 (PER UNIT)

EVENTS STORAGE
ITEM NAME: EVENTS STORAGE
SUPPLIER: MUUTO
LOCATION: BASEMENT DINING SPACE
DETAILS: FEATURES: WITH BOTH OPEN AND CLOSED MODES, IT'S THE PERFECT STORAGE SYSTEM FOR BOOKS AND A PLACE TO CONCEAL NECESSARY EQUIPMENT
FINISH: LAMINATED DASHED VENEERED FOREBOARD
DIMENSIONS: 218 x 436 x 300 (DIM), LARGE: 436 x 850 x 300 (DIM), WITH DOOR: 436 x 436 x 300 (DIM)
QUANTITY (PER SITE): 6
COST: £270 (PER UNIT)

SLICE TABLE
ITEM NAME: SLICE TABLE
SUPPLIER: NORMANN COPENHAGEN
LOCATION: BASEMENT DINING SPACE
FINISH: OAK VENEER TABLETOP, OAK FRAMEWORK, FINISHED IN NATURAL TREATMENT
DIMENSIONS: 980 x 200 x 900 (DIM)
QUANTITY (PER SITE): 1
COST: £270 (PER UNIT)



OVER TABLE PENDANT LIGHTS
ITEM NAME: OVER TABLE PENDANT LIGHTS
SUPPLIER: NORMANN COPENHAGEN
LOCATION: FIRST FLOOR MEZZANINE (2x SMALL, 2x MEDIUM)
LIGHTING RANGE: 2x SMALL: 270 (DIM), 2x MEDIUM: 270 (DIM)
FINISH: ALUMINIUM, FINISHED IN BLACK/PAINT
DIMENSIONS: 2x SMALL: 220 (DIM), 2x MEDIUM: 220 (DIM)
QUANTITY (PER SITE): 4
COST: £250 (PER UNIT)

SEATING PENDANTS
ITEM NAME: SEATING PENDANTS
SUPPLIER: NORMANN COPENHAGEN
LOCATION: FIRST FLOOR BEDROOM
LIGHTING RANGE: 2x SMALL: 270 (DIM), 2x MEDIUM: 270 (DIM)
FINISH: ALUMINIUM, FINISHED IN BLACK/PAINT
DIMENSIONS: 2x SMALL: 220 (DIM), 2x MEDIUM: 220 (DIM)
QUANTITY (PER SITE): 2
COST: £280 (PER UNIT)

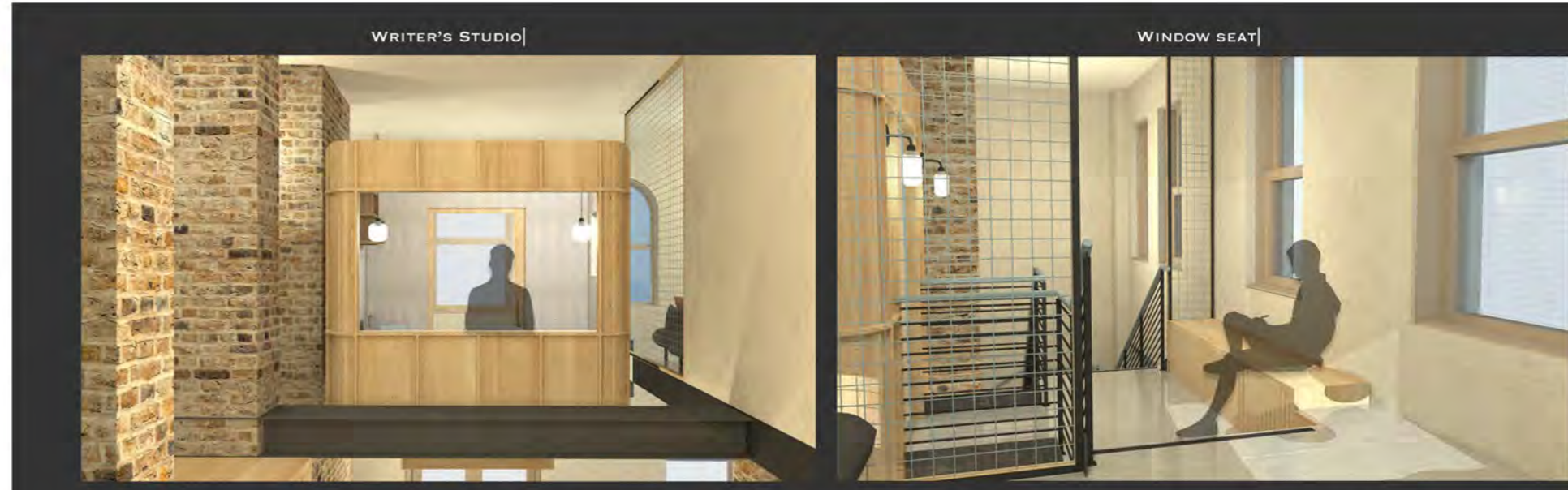
EXTERIOR STUDY WALL LAMP
ITEM NAME: EXTERIOR STUDY WALL LAMP
SUPPLIER: NORMANN COPENHAGEN
LOCATION: WRITER'S STUDIO (EXTERIOR FIRST FLOOR)
LIGHTING RANGE: 2x SMALL: 270 (DIM), 2x MEDIUM: 270 (DIM)
FINISH: ALUMINIUM, FINISHED IN BLACK/PAINT
DIMENSIONS: 2x SMALL: 220 (DIM), 2x MEDIUM: 220 (DIM)
QUANTITY (PER SITE): 2
COST: £280 (PER UNIT)



INTERIOR STUDY PENDANTS
ITEM NAME: INTERIOR STUDY PENDANTS
SUPPLIER: NORMANN COPENHAGEN
LOCATION: WRITER'S STUDIO (INTERIOR FIRST FLOOR)
LIGHTING RANGE: 2x SMALL: 270 (DIM), 2x MEDIUM: 270 (DIM)
FINISH: ALUMINIUM, FINISHED IN BLACK/PAINT
DIMENSIONS: 2x SMALL: 220 (DIM), 2x MEDIUM: 220 (DIM)
QUANTITY (PER SITE): 2
COST: £280 (PER UNIT)

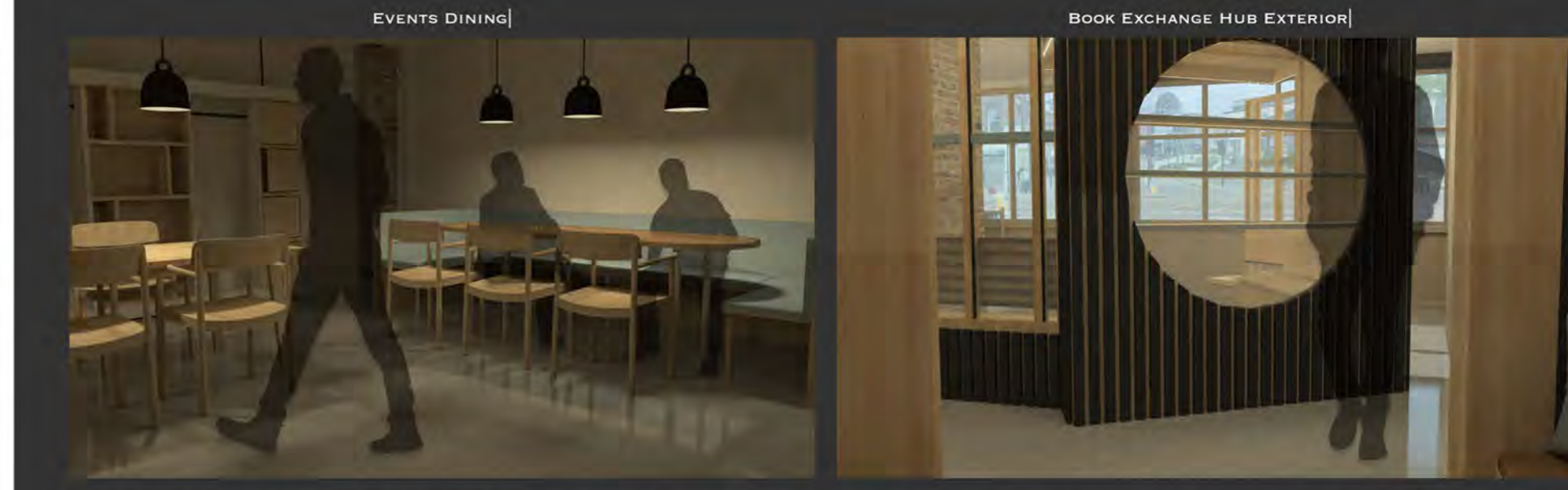
CEILING LIGHTS
ITEM NAME: CEILING LIGHTS
SUPPLIER: ASTRO LIGHTING
LOCATION: THROUGHOUT THE INTERIOR
LIGHTING RANGE: IMPLEMENTED TO ADD ADDITIONAL LIGHTING SOURCE, PARTICULARLY IN THE WRITER'S STUDIO, ATTENDING TO CONTRAST, AMBIENCE AND AWARENESS FOR VISUAL, AUDIBLE AND EVENTS. IDEAL: SLIGHT: DAYLIGHT
FINISH: SLATE AND MARBLE, FINISHED IN BRUSH / BLACK
DIMENSIONS: 2x 180 (DIM)
QUANTITY (PER SITE): 3
COST: £320 (PER UNIT)

LED LIGHTS
ITEM NAME: LED LIGHTS
SUPPLIER: BIRMA ITALIA
LOCATION: GROUND FLOOR AND BASEMENT PUBLIC HUB (OUTSIDE)
LIGHTING RANGE: 3000K, WARM WHITE
DIMENSIONS: 2x 180 (DIM)
QUANTITY (PER SITE): 2
COST: £250 (PER UNIT)



WITH NEW FOUND INSPIRATION CIRCLING THE MIND, I HASTILY TAKE A SEAT IN THE STUDIO, SOMEWHAT OF A WRITER'S RETREAT PRACTICING AN 'AESTHETIC OF THE ESSENTIAL' AS TO GROUND AND REGAIN AN INDIVIDUAL FOCUS. EXPERIENCES ADOPT A RATHER ENCLOSED ATMOSPHERE AN ODE TO THE DENS AND FORTS THAT SO OFTEN INSPIRED US AS CHILDREN, SWITCHING BETWEEN THE SIDE BENCH AND ERGONOMICALLY ADAPTED UPHOLSTERED SEATING, OVERHEAD PENDANTS ILLUMINATE THE GENEROUS TABLE. BELOW CURIOUS EXPLORERS FORM TRACKS OF THEIR OWN, EXCITEMENT AND DRAMA CREATED THANKS TO THE CAREFULLY SELECTED DARK PAINT SHADE THAT CLOAKS THE BOOK EXCHANGE HUB.

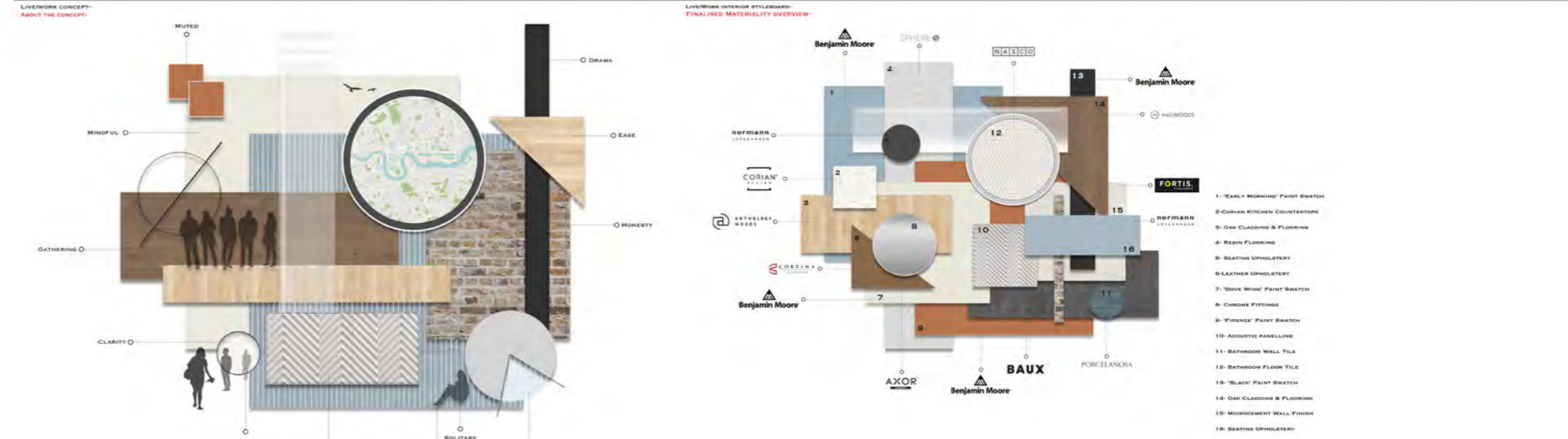
AFTER A FEW HOURS, INSPIRATION IS ON THE DOWNLOW, OUTSIDE OF THE HUB'S WALLS AWAITS A SOUTH FACING WINDOW SEAT FORMING READING NOOKS AND OBSERVATION ZONES THAT PRIORITISE AUDITORY INSPIRATION OVER VISUAL MEANS.



AS THE EVENING MAKES ITS APPEARANCE, SPACES OF PUBLIC INTERACTION BEGIN TO ADAPT. BASEMENT SUPPER CLUBS ARE IN FULL SWING HIGHLIGHTED BY OVERHEAD PENDANTS THAT EMIT A WELCOMING GLOW. MAKING MY WAY TO JOIN THE GATHERING I TAKE NOTE OF THE POETRY READING TAKING PLACE IN THE SMALLER EVENTS PAVILION, A HANDFUL OF INDIVIDUALS PRESENT LISTENING AND APPRECIATING VARYING SUCCESS. SHARED FREELY OVER FOOD I LEARN OF MEMORABLE EVENTS AND CHERISHED MEMORIES, ONE INDIVIDUAL EVEN WHEN ON TO SHARE HOW HER SUCCESS IN JOURNALING HAS LED TO MANY RESEARCH TRIPS AROUND THE WORLD. AS CHATTER DRAWS TO A CLOSE AND WITH NEW IDEAS ON THE HORIZON I HEAD UPSTAIRS. AS SOLITUDE PREVAILS, THE SITE BECOMES A PRIVATE DWELLING EVEN MORE, TO THE SIDE THE DAYTIME STORY POD SHIFTS ITS APPEARANCE, ITS STATE NOW SHUT, ILLUMINATED FROM THE INSIDE; PASSER-BY INTRIGUE IS MAINTAINED GRASPED BY A GLOWING LANDMARK THAT DELIBERATELY CAMOUFLAGES ITS INTENTION TO ENCOURAGE A RETURN DAY AFTER DAY.



BY THE TIME I REGAIN PRESENCE IN THE GROUND FLOOR VICINITY, THE SPACE IS A HIVE OF INTRIGUING ACTIVITY WITH A BUZZ OF CONVERSATION CHAINED TO THE MASKED STORY POD. UNSUSPECTINGLY JOINING THE GATHERING, SCATTERED VISITORS BROWSE WITH UNDENIABLE LEISURE, GUIDED BY THE LED MOUNTED STRIPS THAT DRAW THE EYE TO RANDOMLY ARRANGED TITLES OF VARYING TALE. CHILDREN LAUGH AND SHARE TOGETHER, RE-IMAGINING STORIES WRITTEN IN THE PAGES, SAT ATOP THE EXTENDED BENCHES IN AN EAGER FIT OF PLAYFULNESS. TO THE SIDE, MASKED BY A BRICKWORK PILLAR A SOLITARY STUDENT FLICKS THROUGH A DONATED NOVEL OF FICTION, IN A STATE OF UNDENIABLE FOCUS LOOKS TO LINGER A LITTLE LONGER THAN EXPECTED. AT THE BACK IN THE SECLUDED LEATHER CLAD CONVERSATION BOX STRANGERS CONVERSE WITH SINCERITY, TAKING A SEAT I AM IMMEDIATELY DRAWN INTO A SERIES OF UNTOLD NARRATIVES THAT SHARE SUCCESS, ADVICE AND UNLIKELY TWISTS THAT WOULD OTHERWISE REMAIN SUBDUED HADN'T AN INDIVIDUAL FELT ENOUGH AT EASE TO RECOLLECT AND RECALL.

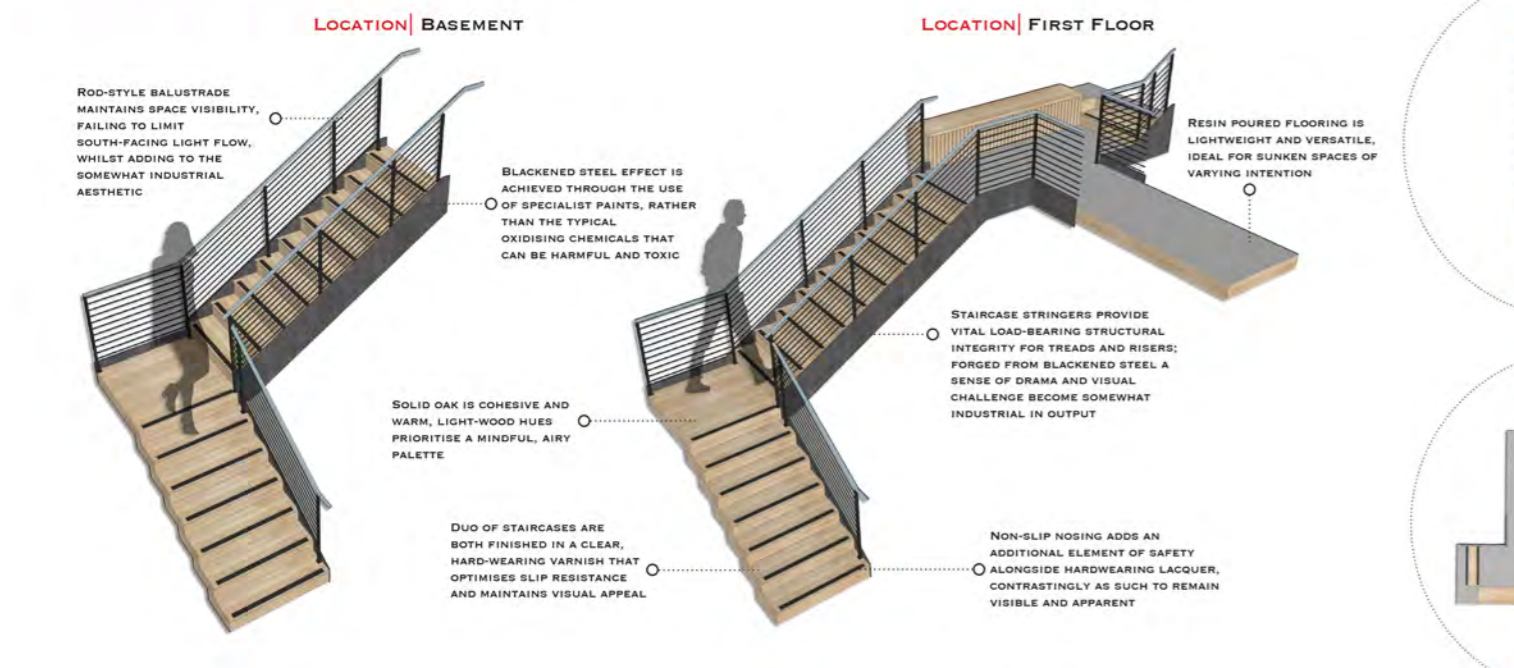


**LIVE/WORK COMPONENT MATERIALITY & DESIGN DETAIL OVERVIEW-
DESIGN DETAIL OVERVIEW-
EVENTS PAVILIONS-**



PAVILION INTENTION LOCATED IN THE SITE'S DEDICATED EVENTS BASEMENT, A DUO OF PAVILIONS RESIDES WITH MINDFUL INTENT. WITH A SERIES OF GEOMETRIC CUT OUTS, APPROACH VARIES EACH TIME, NEVER FAILING TO CREATE PASSING INTEREST. OVERHEAD LIGHT EXCHANGES EMULATE CRITICAL INSPIRED WINDOWS, GUESTS ARRIVING FROM THE SIDE OVERLOOK THE GROUND FLOOR MEZZANINE ABLE TO OBSERVE PUBLIC BEHAVIOUR FROM ABOVE, ALTERNATIVELY FROM INSIDE GAZING UP THROUGH A DIRECTED FIELD OF VIEW THAT REVEALS CURIOUS EXPLORERS. UPON APPROACH THE SMALLER OF THE TWO PAVILIONS ENCASES A RELAXED SEATING AREA, DECORATED IN RICH TERRAZZOTA UPHOLSTERY THAT AWAITS LATE NIGHT POETRY READINGS AND ALIEN INTIMATE EVENTS. DIVIDING THE DUO EASE OF FLEXIBILITY IS ENSURED THROUGH SLIDING THRESHOLDS THAT DISAPPEAR OUT OF SIGHT, MASKING A FLEXIBLE EVENTS SPACE WITH ADAPTABLE FURNITURE. UPON CLOSER INSPECTION FORMS ARE SYMBOLIC OF SIMPLISTIC CHILDHOOD TOYS; GUESTS ARE FORCED TO RECALL PAST NARRATIVES AND TREASURED MEMORIES, SHARED ON THE GROUNDS OF COMMUNITY COMPANY AND WRITER PRESENCE.

**LIVE/WORK STAIRCASE DETAILING & COMPONENT OVERVIEW-
DESIGN DETAIL OVERVIEW-**



LOCATION | BASEMENT



EVENTS PAVILIONS VISUALISATION



**LIVE/WORK BATHROOM SPECIFICATIONS & PRIORITIES-
DETAILED OVERVIEW OF FITTINGS & FIXTURES-**

<p>TOILET LAUFEN</p> <p>ITEM NAME: L214 WALL-FRONT WC, ADVANCED WASHDOWN RINSELESS</p> <p>ARTICLE NO.: H882000000001</p> <p>SUPPLIER: LAUFEN</p> <p>LOCATION: PUBLIC BATHROOMS (GROUND & BASEMENT FLOORS), PRIVATE BATHROOM (FIRST FLOOR)</p> <p>FINISH: 3000 WHITE</p> <p>DIMENSIONS: 520 x 360 x 345 (MM)</p> <p>QUANTITY (PER SITE): 3</p> <p>COST: PRODUCT ENQUIRY REQUIRED (PER UNIT)</p>	<p>BATHROOM MIRA LAUFEN</p> <p>ITEM NAME: MIRA WASHROOM, UNDERSURFACE COUNTOUR</p> <p>ARTICLE NO.: H818114000001</p> <p>SUPPLIER: LAUFEN</p> <p>LOCATION: PUBLIC BATHROOMS (GROUND & BASEMENT FLOORS), PRIVATE BATHROOM (FIRST FLOOR)</p> <p>DETAILED FEATURES: WALL-HUNG TO EMBODY EASE, IF ANY TENANCE AND OPENING</p> <p>FINISH: 3000 WHITE</p> <p>DIMENSIONS: 650 x 450 x 150 (MM)</p> <p>QUANTITY (PER SITE): 2</p> <p>COST: PRODUCT ENQUIRY REQUIRED (PER UNIT)</p>	<p>VANITY UNIT LAUFEN</p> <p>ITEM NAME: LANY VANTY UNIT, 2 DRAWERS, GEAR UNIT MATCHING MIRA (GROUND)</p> <p>ARTICLE NO.: H810087000001</p> <p>SUPPLIER: LAUFEN</p> <p>LOCATION: PRIVATE BATHROOM (FIRST FLOOR)</p> <p>DETAILED FEATURES: VANTY UNIT FEATURES A SET OF ADJUSTABLE DRAWERS FOR VITAL EASY TO ACCESS STORAGE, WALL-HUNG FOR EASE OF MAINTENANCE</p> <p>FINISH: 3000 WHITE MATT</p> <p>DIMENSIONS: 785 x 450 x 115 (MM)</p> <p>QUANTITY (PER SITE): 1</p> <p>COST: PRODUCT ENQUIRY REQUIRED (PER UNIT)</p>
<p>WASHED KITCHEN MATKI</p> <p>ITEM NAME: EMP LAUFEN WET BOWL PANEL</p> <p>REF: EW7000</p> <p>SUPPLIER: MATKI</p> <p>LOCATION: PRIVATE BATHROOM (FIRST FLOOR)</p> <p>DETAILED FEATURES: AVAILABLE IN A RANGE OF FINISHES ALL FINISH WITH A WALL MOUNTING, TONGUE AND GROOVE SAFETY CLASP, POTENTIAL FOR RESINIC FINISH AVAILABLE</p> <p>FINISH: BRUSHED BLACK CHROME</p> <p>DIMENSIONS: 668 x 279 (MM), 2013 (MM) WIDE BOWL HEIGHT</p> <p>QUANTITY (PER SITE): 1</p> <p>COST: £453 (PER UNIT)</p>	<p>ACTIVE SIDE WINDER ABOVE</p> <p>ITEM NAME: HANGING KANTA 8 MIRROR WITH LED LIGHTS 7000 IN MIRROR</p> <p>PRODUCT CODE: 84897000</p> <p>SUPPLIER: PRO HANGING (AKOR)</p> <p>LOCATION: PUBLIC BATHROOMS (GROUND & BASEMENT FLOORS), PRIVATE BATHROOM (FIRST FLOOR)</p> <p>DETAILED FEATURES: CIRCULAR LED STRIP OPERATED BY BENEFIT MIRROR OR BOUTIQUE MIRROR, ADDITIONAL DETAILS PRESENT ANY-FULL DETAIL FOR OPTIMUM USE PARTICULARLY IN FIRST FLOOR BATHROOM</p> <p>FINISH: MIRROR CLEAR FINISH COATED SURFACE MATERIAL, FINISHED IN MATT WHITE</p> <p>DIMENSIONS: 700 SQUARE (MM)</p> <p>QUANTITY (PER SITE): 2</p> <p>COST: £1508 (PER UNIT)</p>	<p>BATHROOM MIXERS & FIXTURES ABOVE</p> <p>ITEM NAME: HANGING KANTA 8 MIRROR WITH LED LIGHTS 7000 IN MIRROR</p> <p>PRODUCT CODE: 84897000</p> <p>SUPPLIER: PRO HANGING (AKOR)</p> <p>LOCATION: PUBLIC BATHROOMS (GROUND & BASEMENT FLOORS), PRIVATE BATHROOM (FIRST FLOOR)</p> <p>FINISH: CHROME</p> <p>1. ITEM NAME: HANGING BRASSER SELECT 8, THERMOSTATIC 240, 1-1/2" PIPES/BRASS</p> <p>DIMENSIONS: BRASSER HEAD 240 (MM), BRASSER AND 400 (MM)</p> <p>QUANTITY (PER SITE): 1</p> <p>COST: £1225 (PER UNIT)</p> <p>2. ITEM NAME: HANGING BRASSER 8, BRASSER LEVEL BRASS W/EX, 1-1/2" PIPES/BRASS 80</p> <p>DIMENSIONS: 133 x 100 (MM)</p> <p>QUANTITY (PER SITE): 3</p> <p>COST: £114 (PER UNIT)</p> <p>3. ITEM NAME: HANGING BRASSER SELECT, THERMOSTATIC W/EX</p> <p>QUANTITY (PER SITE): 1</p> <p>COST: £758 (PER UNIT)</p>

EVENTS PAVILIONS EXTERIOR |



POINT OF ENTRY |

EVENTS PAVILIONS EXTERIOR |



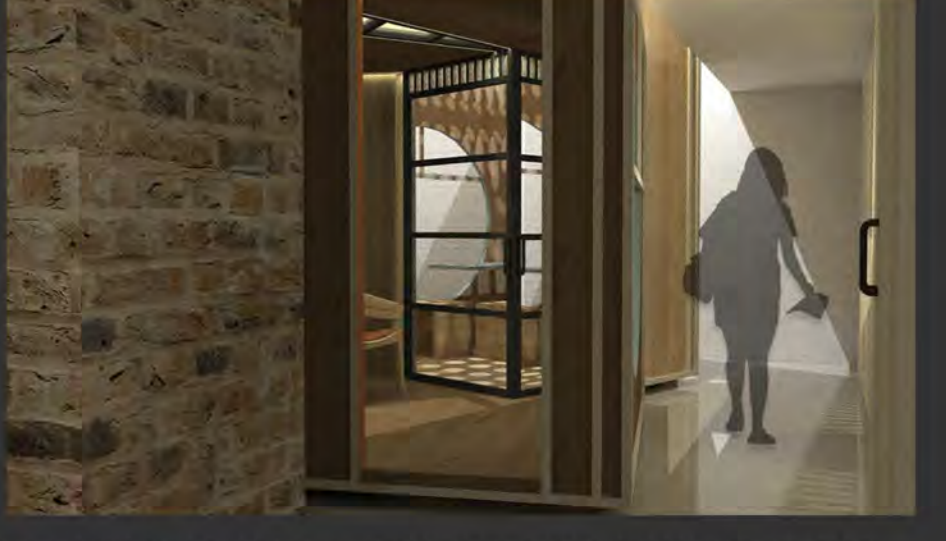
GROUND FLOOR MEZZANINE |



FIRST FLOOR STAIRCASE |



EVENTS PAVILIONS |



POWDER COATED HANDRAILS SIGNAL A ROUTE CHANGE, NAVIGATIONS ARE SOLIDIFIED BY TACTILE NON-SLIP NOSING THAT MARKS EACH STEP, DETAILING ALLOWS FLOW TO REMAIN ON A SEMI-CONSCIOUS PATH PRIORITISING SPACE INTENTION OVER AESTHETIC. UPON ARRIVAL TO THE GROUND FLOOR I VENTURE AS FAR AS THE MAIN THRESHOLD, LOCATED ON AN UNSUSPECTING SIDE STREET THAT ENCOURAGES LOCALS TO EXPLORE AND DETOUR FROM MAINSTREAM FOOTTRAFFIC. WITH THE SPACE NOW OPEN TO THE PUBLIC I TREK BELOW GROUND BOUND FOR THE KITCHEN. UPON APPROACH SUPER-SIZED CHILDHOOD TOYS LOOM AHEAD VIBRANTLY ADORNED WITH DAPPLED SUNLIGHT THAT DANCES ON THE WALLS COURTESY OF THE MIDDAY SUN, TO THE SIDE SHADOW RIDDEN CORNERS HUNT THE SUN IN A GAME OF CHASE. REACHING THE KITCHEN AND WITH A COFFEE IN HAND I OBSERVE THE UNACCOMPANIED DINING SPACE, THE MIND PAINTING PICTURES OF WHAT NARRATIVES ARE YET TO BE SHARED DURING THIS EVENING'S LATE NIGHT COMMUNITY SUPPER CLUB; WITH A DROP-IN NATURE EXPECTATIONS ARE PURELY FICTIONAL.

CLIENT BEDROOM |



WRITER'S STUDIO EXTERIOR |



ITS HIGH SUMMER, MORNINGS ARE OFTEN THE SAME. WITH THE CURTAINS DRAWN IN THE BEDROOM I OBSERVE THE DAYLIGHT FUELLED COMMOTION ALONG NEIGHBOURING STREETS, EACH ALIGNED WITH AN INDIVIDUAL PATH, LOCALITY SCATTERS, FROM ABOVE APPEARING SOMEWHAT OF A MINIATURE VILLAGE THAT AWAITS RE-IMAGINATION. AS THE TIME MOVES FORWARD, I MAKE AN EFFORT TO START THE DAY, ENTERING THE BATHROOM WHICH LIES IN CLOSE QUARTERS TO THE PRIVATE SUITE. THROUGH THE SLIDING DOOR, MOSAIC TILES LINE THE FLOOR, TACTILE AND TEXTURED UNDERFOOT, CREATIVE INSPIRATION STARTS TO FORM.

ON THE WAY DOWN TO MAKE REFRESHMENTS I PASS THE SOLITARY STUDIO, PERCHED HIGH BETWEEN EXISTING STRUCTURES, GAZING BELOW WITH A BIRD'S EYE VIEW IT AWAITS THE OBSERVATION OF LATE MORNING GUESTS. THE STUDIO ITSELF FROM THE OUTSET RESEMBLES A BIRDHOUSE TYPE CHARACTER, CARVED FROM LIGHTWOOD OAK AND BOUND BY CURVES, I FEEL INCINED TO ENTER, SIT ALONE AND OBSERVE IN A STATE OF SOLITUDE AND REGAIN CLARITY, AWAY FROM THE MURMURED CONVERSATION LIKELY TO UNFOLD AFTER OPENING.

PROJECT OVERVIEW & KEY REVIEW OVERALL THROUGHOUT THIS PROJECT EXPLORATION OF INITIAL IDEAS LOOKED TO INSPIRE AND RE-IMAGINE, WITH CURRENT TRENDS THE BUILDING BLOCKS ON WHICH TO BUILD DESIGN DIRECTION. THE ADDITION OF SITE MAPPINGS AND CONTEXT ALLOWED THE INTRODUCTION OF POTENTIAL LOCALITY INCORPORATION WITHIN THE SITE, WITH PUBLIC INTERACTION THE HEART OF THIS TRIPLE-HEIGHT ENDEAVOUR. DESIGN DEVELOPMENT IN ITS INITIAL STAGES SOUGHT OUT TO REALISE AREAS OF HIGH PRIORITY WITH SPACE PLANNING INDICATING PUBLIC ZONES SHOULD TAKE PRECEDENCE. THE USE OF DESIGN SOFTWARE EXPLORED HAND-SKETCHING IN SCALE DIMENSION, FLAGGING UP MINOR CHALLENGES PRIOR TO THE DESIGN'S FINALISED STAGE. DETAILED DEVELOPMENT LATER DOWN THE LINE PRIORITISED ACHIEVING EASE OF FLOW AND CIRCULATION, NEVER LIMITING INDIVIDUAL AGENDAS AND ROUTINES. INITIAL MATERIALITY SHOWCASED THROUGH PHYSICAL SAMPLE BOARDS EXPLORED A CAREFUL MEDIATION OF TEXTURE AND SIMPLICITY WITH CLARITY AND SINCERITY A KEY TAKE AWAY. NEW SKILLS ADAPTED FROM PREVIOUS PROJECTS ALLOWED DESIGN DIRECTION TO APPEAR CHARACTERFUL AND ENTICING WITH RENDERING EXPLORING STYLED PRESENTATION. WITH A MUCH LONGER PROJECT IN CONSIDERATION, ALLOWING EXTRA TIME ALONG THE WAY TO CHECK GRAMMATICAL ERRORS, REMOVED A NEED FOR A MASS EDIT AFTER COMPLETION, IN ESSENCE SAVING TIME.

IF THIS PROJECT WAS TO BE REPEATED IN FINAL YEAR I WOULD BRING FORWARD A SERIES OF TIME SAVING SKILLS, IN PARTICULAR STYLED RENDERING THAT BRINGS FINALISED PLANS TO LIFE WITH EASE, WITH THE ADDITION OF GRAMMATICAL CHECKING ALONG THE WAY TO MINIMISE LENGTHY OVERVIEW-AT THE END. ADDITIONALLY PRIORITIES FOR FUTURE PROJECTS WOULD LOOK TO MINIMISE ANNOTATION, ALLOWING ADEQUATE TIME FOR DESIGN COMPLETION IN A LESS TIME PRESSURED WAY.