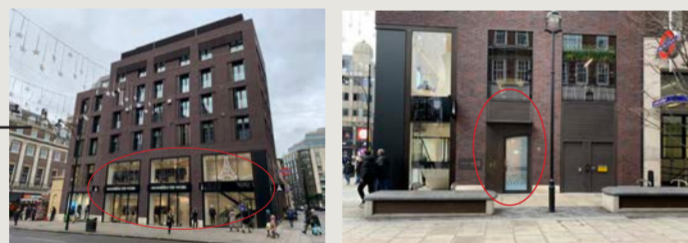


To revitalise 'the nation's high street' for the 21st century, Reverie, being a private members club, provides an opportunity to encourage the resurgence of **Oxford Street**, as a stepping stone in placing the 'economic powerhouse' back onto the cultural map. Considering Westminster's theme of 'smarter, future, together', Reverie's scheme is a radical intervention into a basic structure of a new build that sits along a row of historic buildings, suggesting the possibilities of adapting future buildings. Targeting a client group of **millennials and creatives**, Reverie provides a 'third place' between domestic and work environments, allowing members to **ESCAPE** from the pressures of reality into an alternative world due to its fantastical atmosphere. This includes spaces contributing to the **night-time economy** where members can connect and refresh through facilities such as a lobby/bar, restaurant, library and bedroom suites.

THE SITE & BUILDING ON OXFORD STREET



Located on **Oxford Street**, in the West End of London, the site is currently a Maniere De Voir retail space, which originally possessed a private members club from 1814 until the 1890s. Although the site changed function, the original **Stratford House** remains today. The **West End of London** is known for its vibrant atmosphere of entertainment, showcasing over 40 **theatres** as a method of expression for creatives, playing a vital part in the historical significance and identity of London.

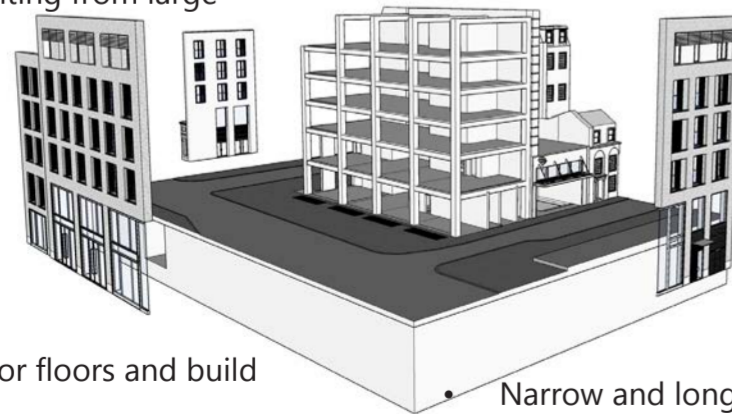


Lack of privacy and exclusivity for members due to large ground floor **windows** exposing the interior, and a **side entrance** for flats that could be repurposed for the use of the private members to work around the challenge of privacy.

STRENGTHS

- Great exposure of the building to the large amounts of people that walk across Oxford Street.
- Access to the tube station, making it easy for members to travel to and from the site
- New modern building
- Ample natural lighting from large windows

SWOT ANALYSIS



OPPORTUNITIES

- Can remove interior floors and build new floor levels
- Can use the side entrance to the flats for members access to provide an element of privacy
- Can utilise the columns to my advantage and integrate it within my design

WEAKNESSES

- Lack of privacy for a private members club due to large facade windows
- Columns create design barriers/restrictions
- Ceiling heights vary on each floor

THREATS

- Narrow and long space makes it difficult to fit in a design
- How to make the facade visually interesting whilst maintaining privacy for members
- Noise levels from tube station and busy Oxford Street may disturb members, especially those who stay overnight.

FILM - PRODUCER



PUBLISHING - WRITER



THEATRE - DIRECTOR



GROWING WITH TECHNOLOGY



MILLENNIALS IN THE WORKFORCE



EXPERIENCE



CREATIVES & MILLENNIALS



The particular client group that Reverie targets are people who work within the **creative industries**, particularly industries that use **narratives** due to the sense of **escapism** in its work which **immerse** people and encourage detachment from reality such as **theatre, film and publishing**. These industries revolve around **storytelling** which takes audiences through compelling experiences, and within design it aims to **resonate with users, evoke emotions and create meaningful experiences**. Designing for Millennials means taking into account their position in society regarding their obsessive relationship with technology, their pressure-heavy work life, and deteriorating mental health. It's about designing a private members club that relieves the weight of these factors in their life and allows them to escape into a fantasy where they can unwind and detach in their 'third place'.

PRIVATE MEMBERS CLUBS

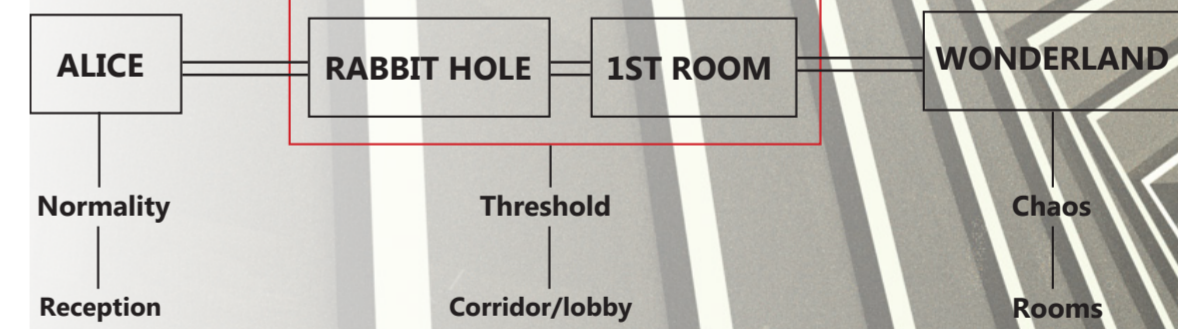


ANNABEL'S

Private member's clubs are organisations, steeped in history dating back to the 17th century, that offer facilities and social enclosures to people who pay a membership fee. It resembles **sophistication and luxury**, offering a cultural hub and bespoke experiences that cater for groups that share interests/passions. **Annabel's** is one of the best known clubs in London for its design that provides a unique experience for its members, inspired by a painting that depicts the fall of man from the Garden of Eden. "It's really about **fantasy** - this is a club, you don't come here for reality, you come to be transported somewhere else" - Martin Bruzniziki.

CONCEPT - ESCAPISM & SURREALISM

An art form which encompasses escapism is surrealism which explores the expression of the **unconscious mind**, depicting **illogical and dreamlike ideas**. Reverie is inspired by the narrative structure of the 1865 surrealist literature piece 'Alice in Wonderland' by Lewis Carroll. It drives the narrative of the club as the space starts in a normal setting such as the reception, transitioning into a threshold which resembles the experience of falling down an ominous rabbit hole and entering the 1st room that plays with the concept of shifts in scale, finally leading to a chaotic atmosphere which resembles 'wonderland'.



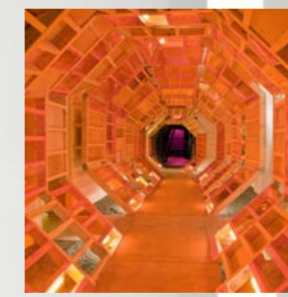
CARLO MOLLINO - TEATRO RIGIO



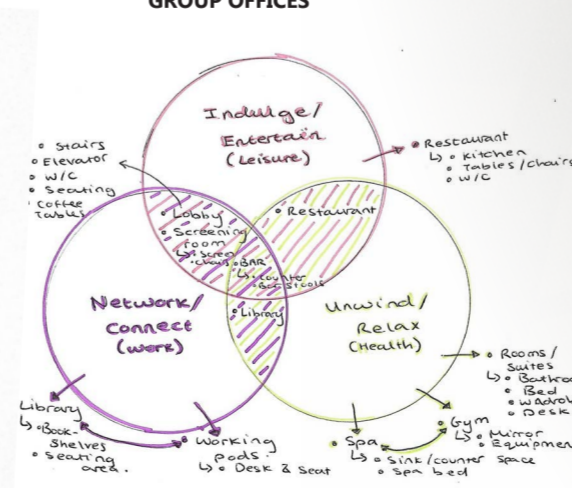
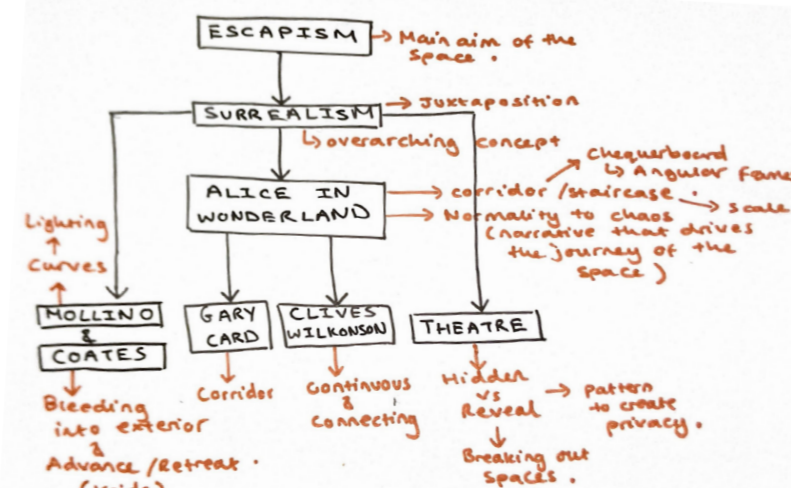
NIGEL COATES - CAFE BONGO



CLIVES WILKINSON - BARBARIAN GROUP OFFICES

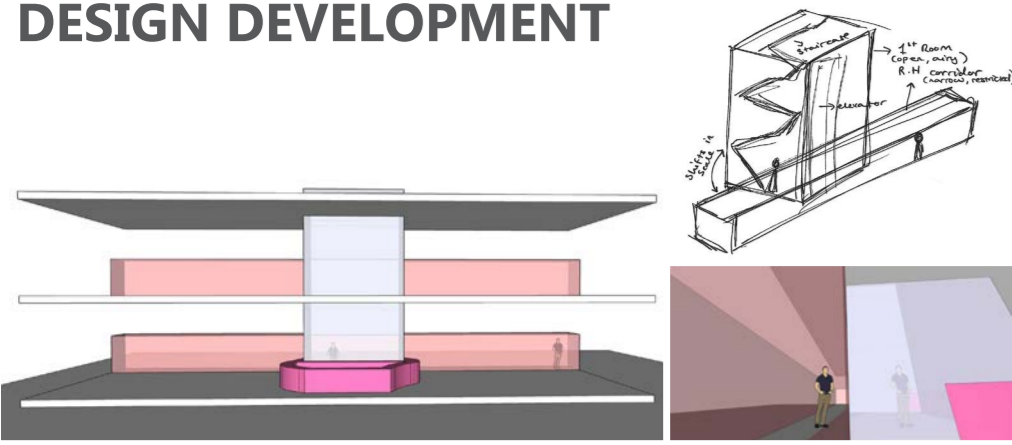


GARY CARD - LN-CC

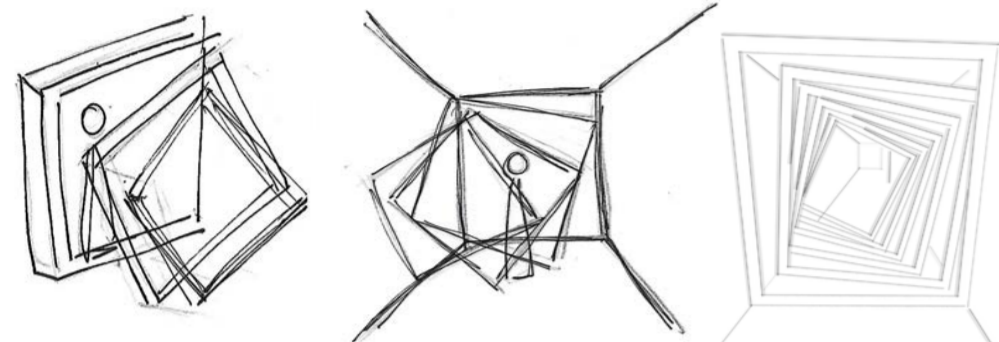


This hierarchy diagram demonstrates a sense of **rationalisation** for the design inspiration for the space. It highlights the main concepts which make sense of the scheme as a whole being escapism which is the main aim, leading to surrealism being the overarching concept, and Alice in Wonderland being the narrative. It then branches out into ideas which have singular devices derived from surrealism within design that are contained to a particular zone such as Mollino with his curves; Coates with bleeding into the exterior; and continuous design strategies such as Gary Card resembling the rabbit hole and Clives Wilkinson suggesting an interconnected wonderland where one encounter leads to the next experience.

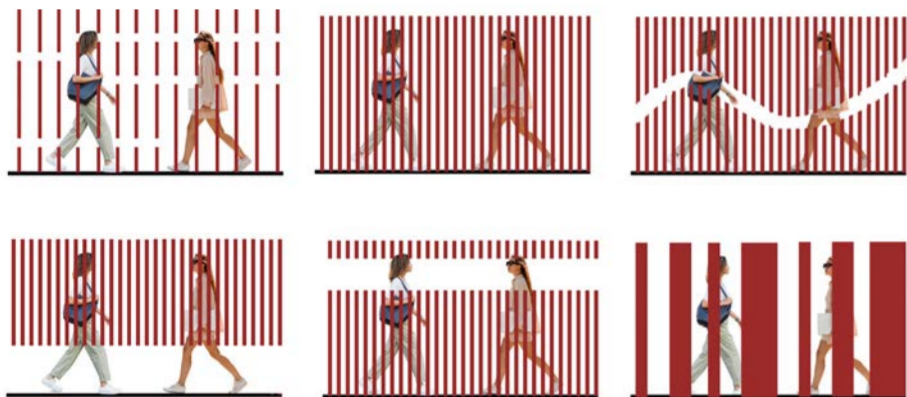
DESIGN DEVELOPMENT



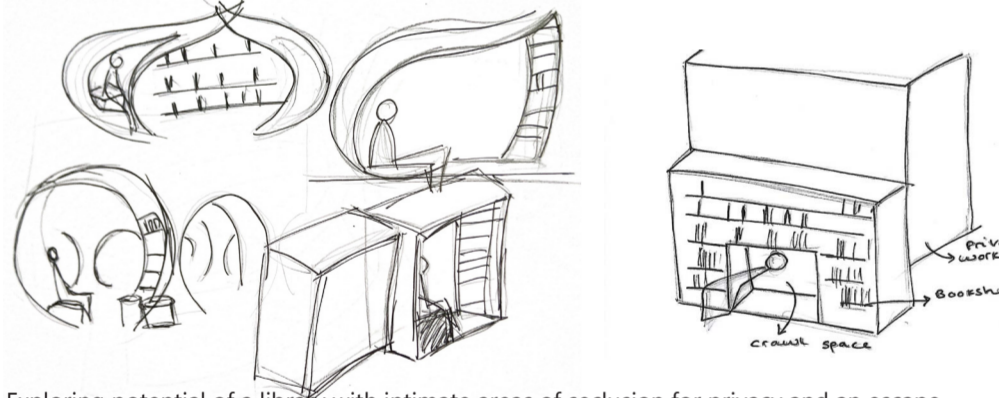
The corridor and staircase spaces play with the concept of shifts in scale, relating to Alice in how she becomes too big or too small for the space she is inhabiting. The corridor is a more restrictive area, thus intends to make users feel like they fill the space, whereas the staircase room is tall and empty, running through the height of the building, causing users to feel small and lost.



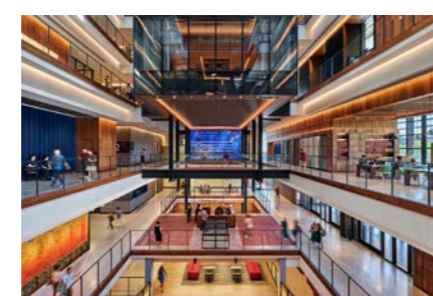
The tilted frames inspired by Gary Card creates the illusion of falling into a hole through it's psychological trick on the eyes as it persuades the user to move their body with the angle of the frames.



Experimentation of the composition of lines to provide a blurred view of movement to solve the issue of minimal privacy within the facade.



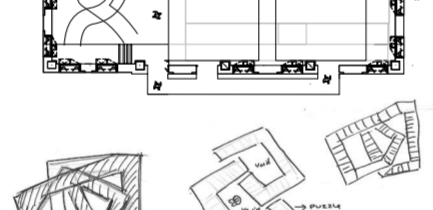
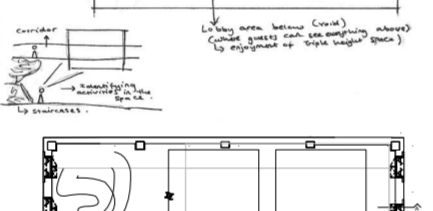
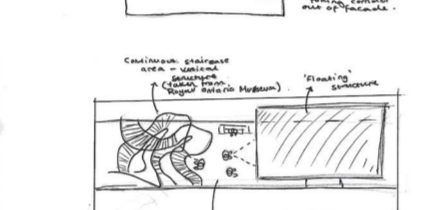
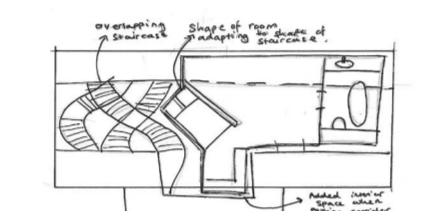
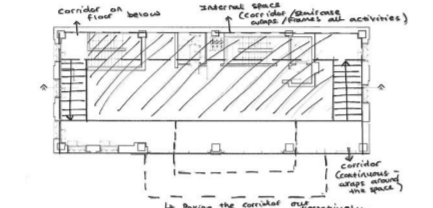
Exploring potential of a library with intimate areas of seclusion for privacy and an escape, taking inspiration from the curves of Mollino's Teatro Rigio's theatre boxes.



John Hopkins University - Ennead Architects and Rockwell Group
Lights makes the space feel as though its moving (light photography - low exposure - moving cars) - creates a busy and erratic environment (linking to wonderland).

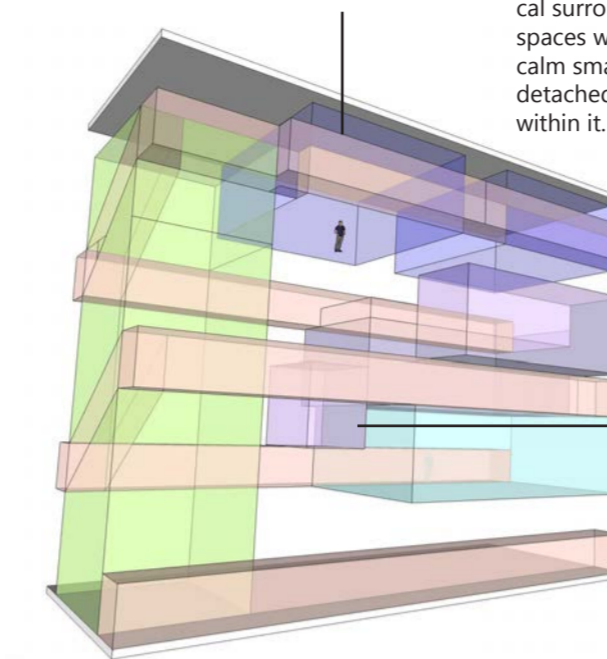


Royal Ontario Museum - Renovation by Hariri Pontarini



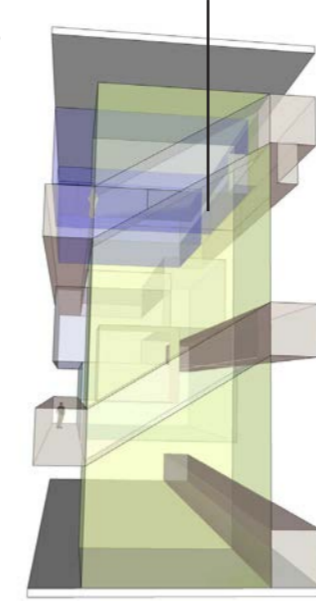
Experimenting with a tilted overlapping staircase inspired by the Royal Ontario Museum.

The suites acts as theatrical spaces staged within the space. They are individual box structures seemingly 'floating' that push out of the facade to emphasise its significance and grandiosity within the space.



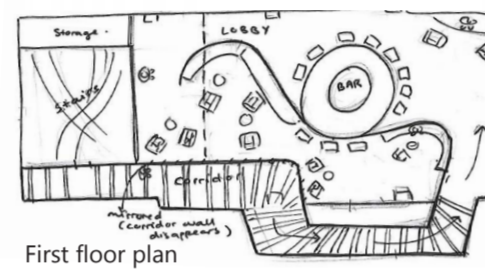
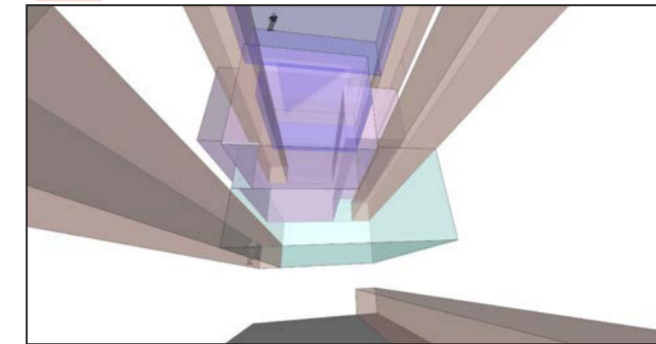
Surreal theatrical surrounding spaces with more calm smaller-scale detached spaces within it.

Drama of the staircase - this highlighted area signifies the vertical relationship that the staircase area has in the space in comparison to the horizontal character of the corridors.

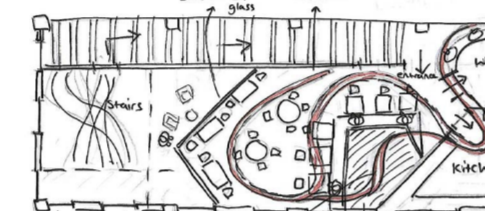


- Rooms/Suites
- Library
- Lobby/ Bar
- Staircase
- Corridor

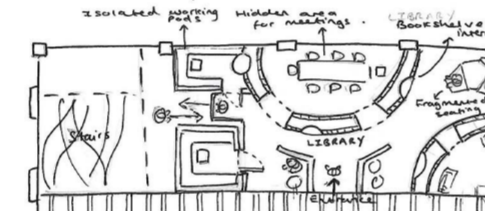
Looking up, a person can view the entirety of the interior and its vertical grandness, viewing the relationship between the various facilities. It celebrates the power of the triple height space.



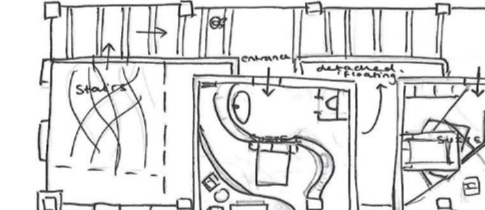
First floor plan



Second floor plan

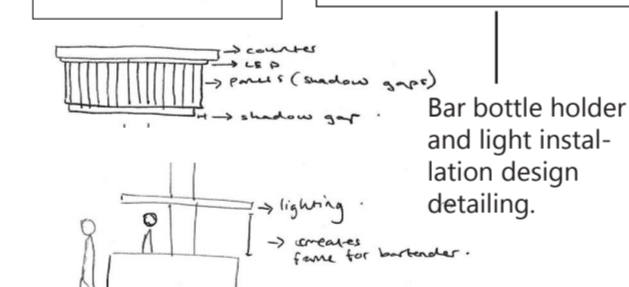
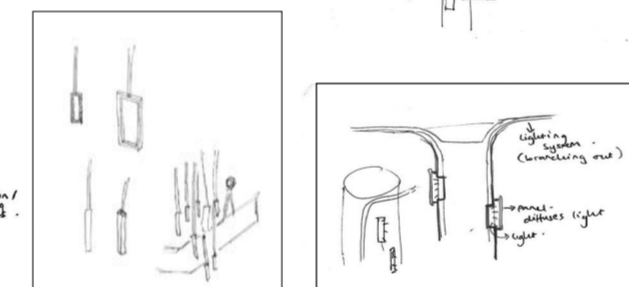
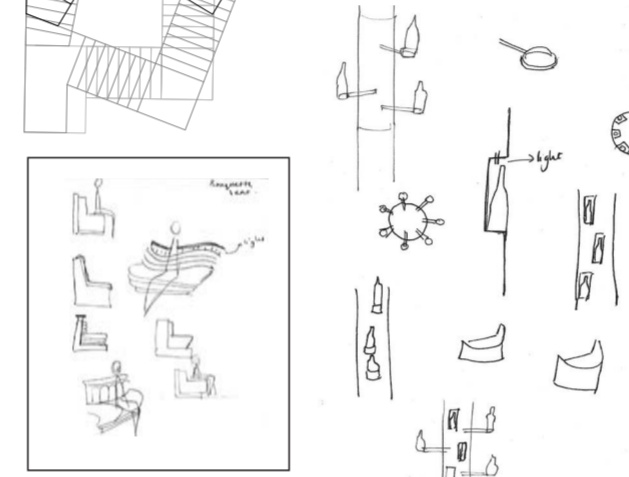


Third floor plan

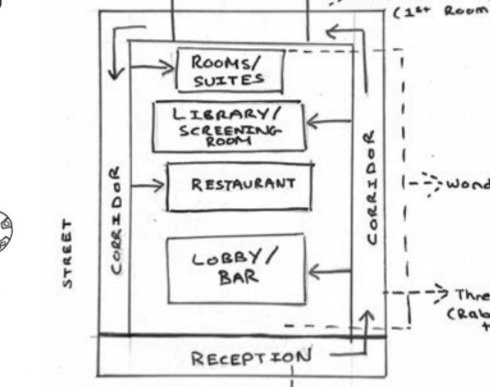


Fourth floor plan

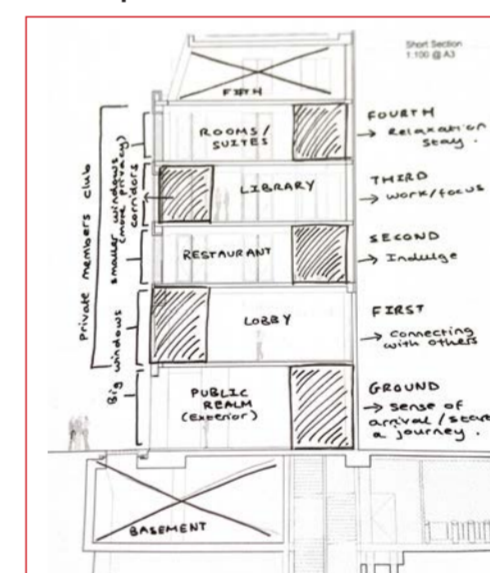
Rotating frame staircase, adopting same design language as corridor with central void to experience irregular shape.



Bar bottle holder and light installation design detailing.



The corridor wraps around the interior edges of the building to encompass the main function. The circling of the space allows the central activity to have a sense of safety and protection for its members, creating their own world separate from Oxford Street.

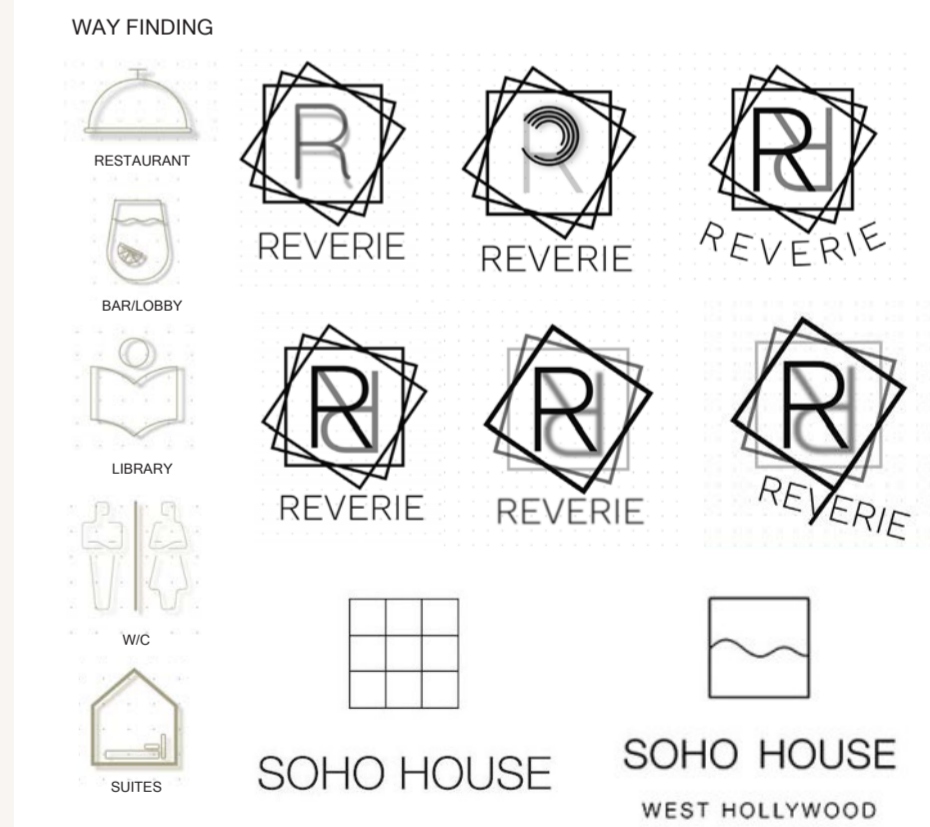
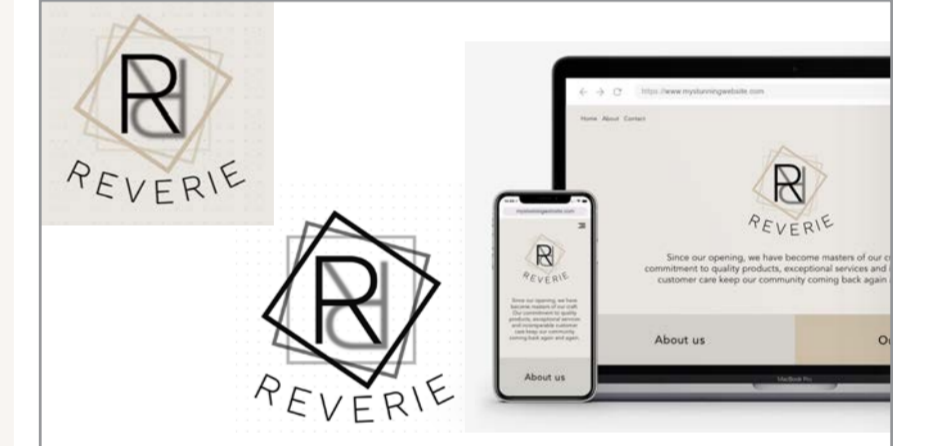


MATERIALITY EXPERIMENTATION



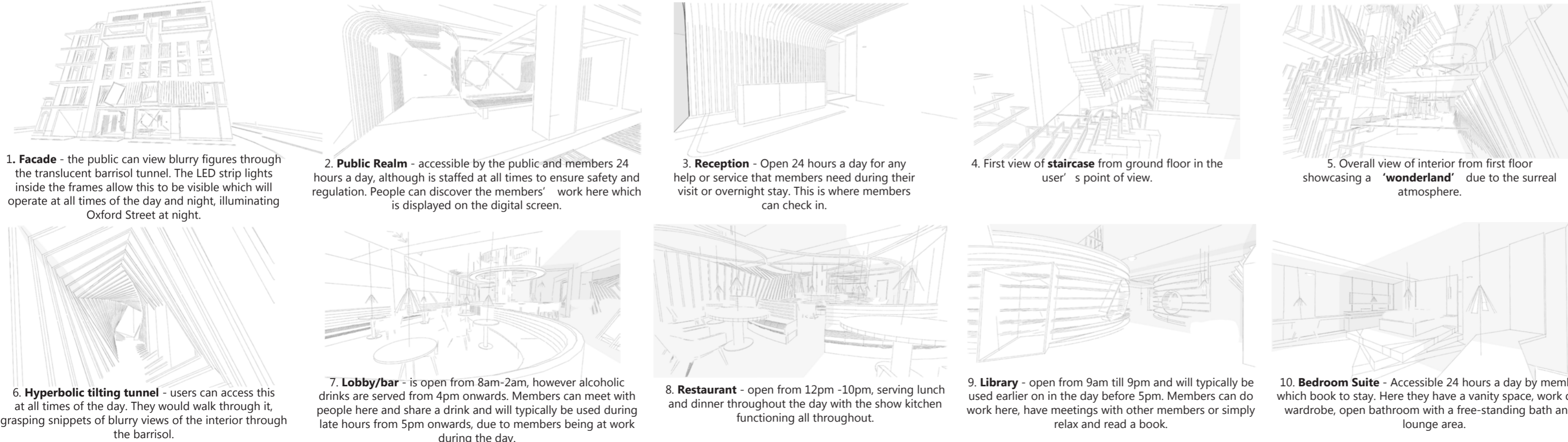
The colour scheme of the space derives from the logo, drawing out neutral beige tones that indicate sophistication and elegance for a private members club, expressed through the materials of warm oak wood and soft, light coloured upholstery. This is contrasted by the darker, cooler colour scheme of a calming blue and black touches that create a moody and hushed atmospheric quality that is often perceived in private members clubs. This is enhanced by details of polished gold to accentuate a sense of luxury and radiance of warmth, which compliments the large quantity of blue paint and upholstery.

BRANDING & LOGO DEVELOPMENT



The Reverie logo is inspired by the minimalist appearance of the Soho House brand identity that draws inspiration from the location and design of each unique club. Therefore, referring to the design language of Reverie's interior, the logo takes the tilted frames of the corridors and creates a visually stimulating overlapping of the motif, to signify the illusion of falling down a rabbit hole, linking to the surreal quality and narrative of Alice in Wonderland. The term 'REVERIE' means to be in a state of having pleasant dream-like thoughts, relating to the concept of a fantasy and surrealist atmosphere, linking directly to the character of my space and the narrative of Alice in Wonderland.

STORYBOARD



1. **Facade** - the public can view blurry figures through the translucent barrisol tunnel. The LED strip lights inside the frames allow this to be visible which will operate at all times of the day and night, illuminating Oxford Street at night.

2. **Public Realm** - accessible by the public and members 24 hours a day, although is staffed at all times to ensure safety and regulation. People can discover the members' work here which is displayed on the digital screen.

3. **Reception** - Open 24 hours a day for any help or service that members need during their visit or overnight stay. This is where members can check in.

4. First view of **staircase** from ground floor in the user's point of view.

5. Overall view of interior from first floor showcasing a 'wonderland' due to the surreal atmosphere.

6. **Hyperbolic tilting tunnel** - users can access this at all times of the day. They would walk through it, grasping snippets of blurry views of the interior through the barrisol.

7. **Lobby/bar** - is open from 8am-2am, however alcoholic drinks are served from 4pm onwards. Members can meet with people here and share a drink and will typically be used during late hours from 5pm onwards, due to members being at work during the day.

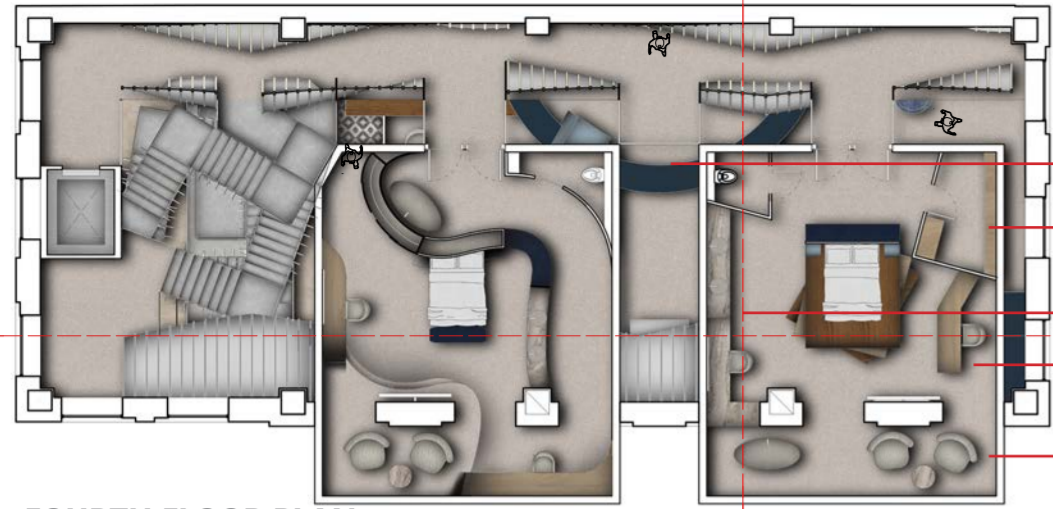
8. **Restaurant** - open from 12pm-10pm, serving lunch and dinner throughout the day with the show kitchen functioning all throughout.

9. **Library** - open from 9am till 9pm and will typically be used earlier on in the day before 5pm. Members can do work here, have meetings with other members or simply relax and read a book.

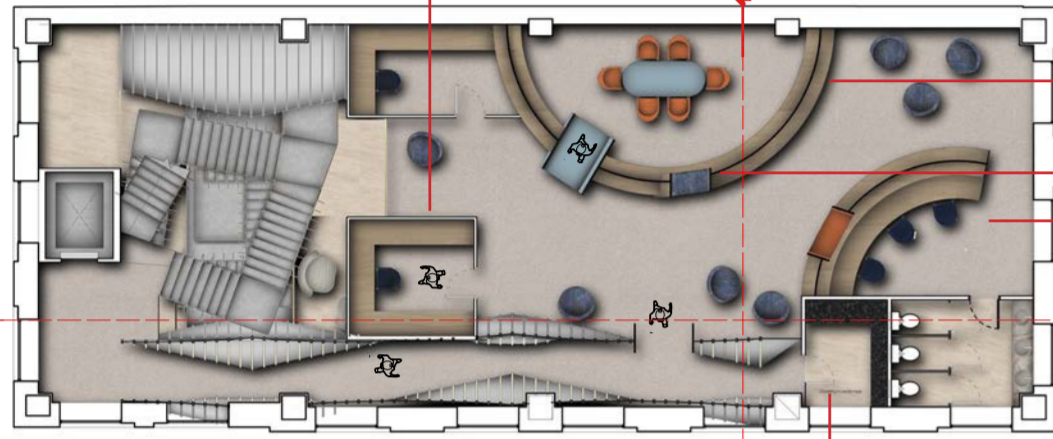
10. **Bedroom Suite** - Accessible 24 hours a day by members which book to stay. Here they have a vanity space, work desk, wardrobe, open bathroom with a free-standing bath and a lounge area.

LAYERS WITHIN WONDERLAND

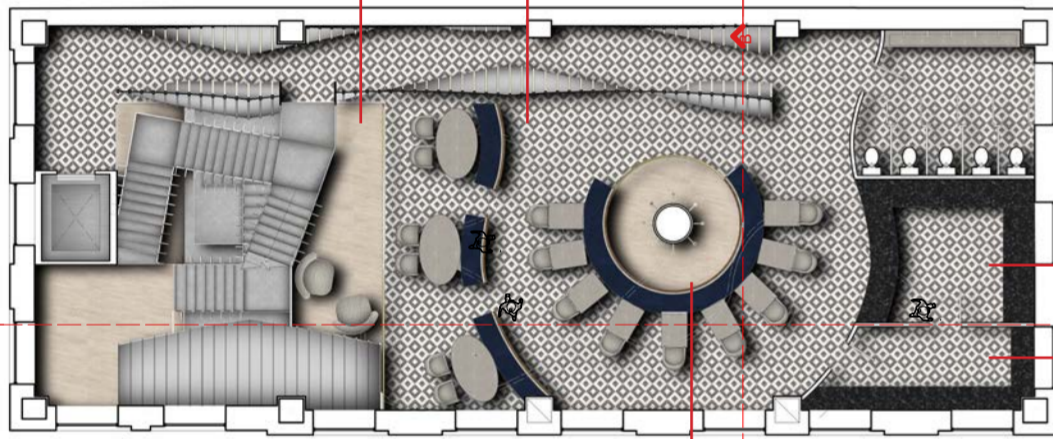
SECTIONAL PERSPECTIVE



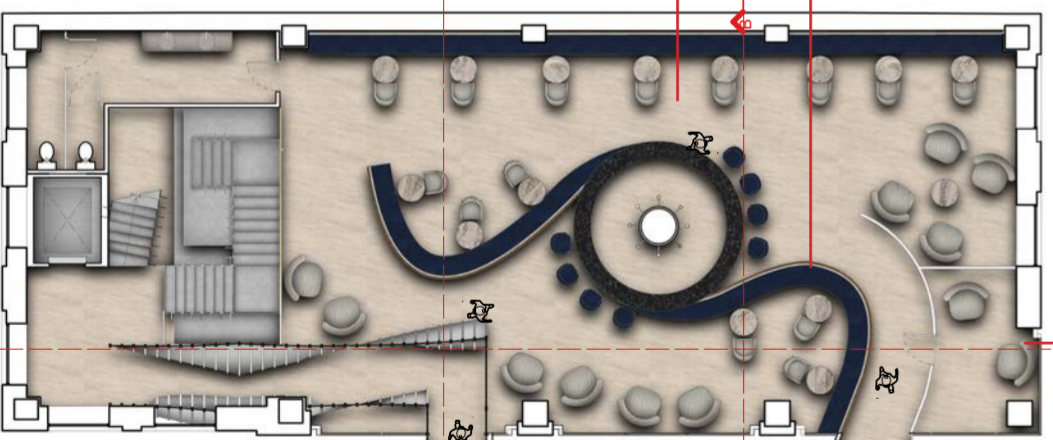
FOURTH FLOOR PLAN
SECLUDED WORKING ROOMS



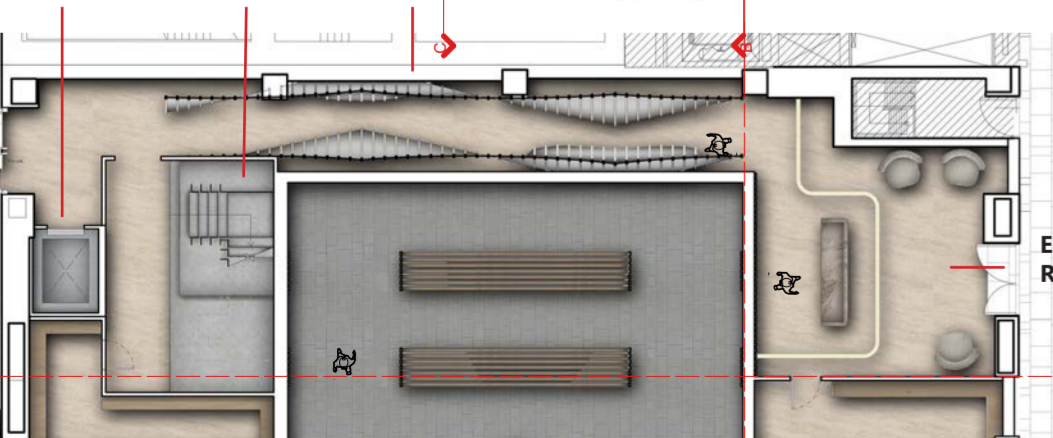
THIRD FLOOR PLAN
RESTAURANT



SECOND FLOOR PLAN
BAR & LOBBY



FIRST FLOOR PLAN
ENTRANCE/RECEPTION



GROUND FLOOR PLAN
PUBLIC REALM

JUXTAPOSITION - A SURREALIST QUALITY
- Each suite possesses a unique character- one being more fluid inspired by curves and a soft influence, in contrast to the harsh angular lines which section off areas within the suite.

Double height void looking down into the library
Walk in wardrobe

Vanity desk and sink area
Work desk

Lounge area

LIBRARY BOOKSHELF

NICHE SEATING

HIDDEN WORK AREA

TRIPLE HEIGHT SPACE
-Restaurant is pushed back to look down into the lobby and celebrate the verticality of the space that produces an interconnected 'wonderland'

TUNNEL & STAIRCASE
The tunnel links to the concept of Alice falling down the rabbit hole as the frames tilt by a 3 degree angle consistently, creating a translucent hyperbolic tunnel. The staircase extends the surrealist quality of the space by taking the tilted frame concept and implementing it within its plan as it rises through a void that travels up the interior of the building, allowing users to see the entirety of the club from the view of the staircase.

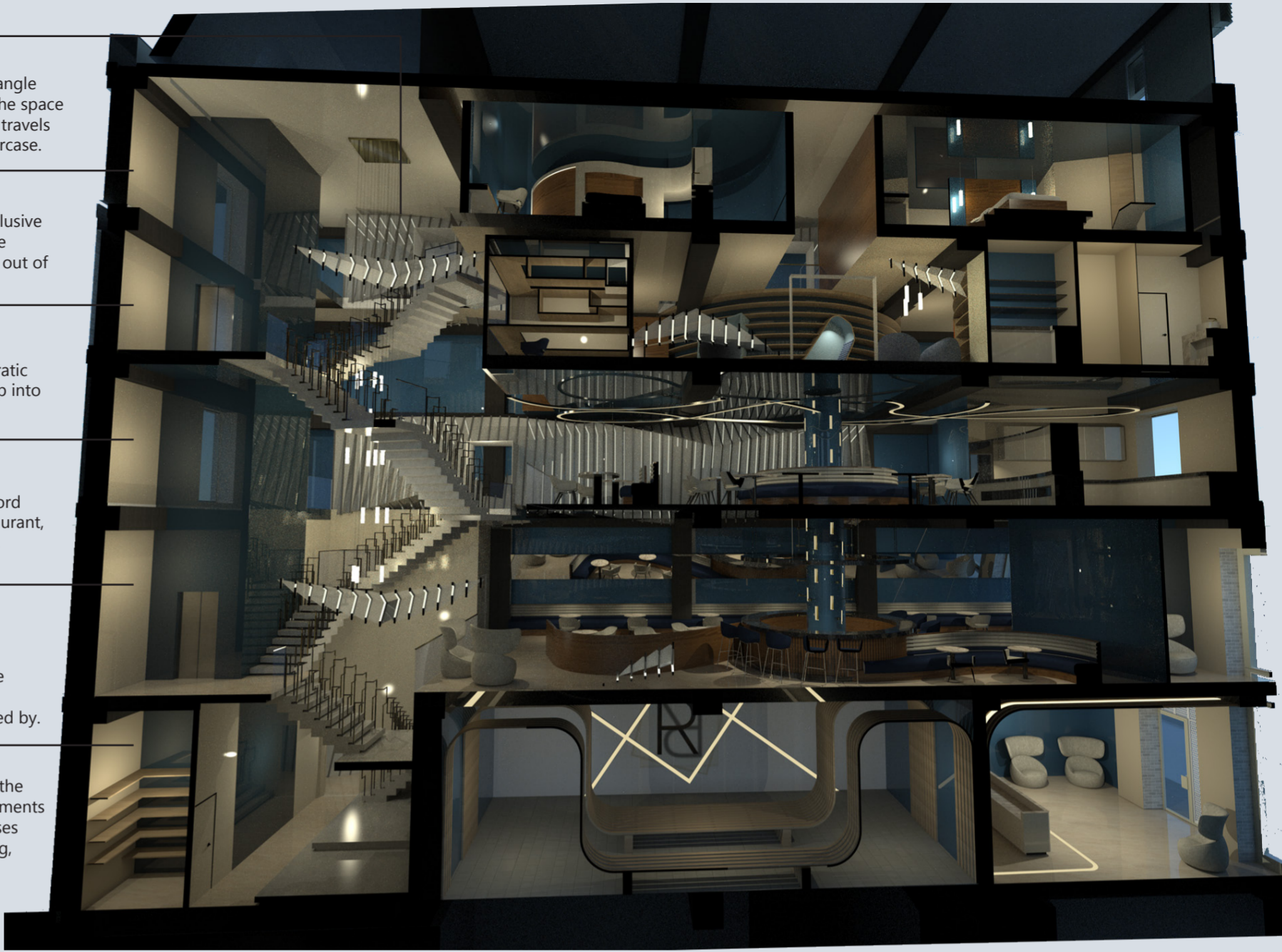
FOURTH FLOOR - BEDROOM SUITES
The bedroom suites provides members with the option to stay overnight and indulge in a luxury, exclusive room which carries Reverie's surrealist atmosphere in every corner. These two suites are made to be significant both in the interior and exterior as they each sit independently in a 'box' that extrudes out of the facade.

THIRD FLOOR - LIBRARY
The library provides members with a hidden space to find seclusion and focus within a busy and erratic member club, in order to escape the 'Wonderland'. It achieves this through breaking the space up into private working rooms, working spaces behind bookshelves and niches to sit and work.

SECOND FLOOR - RESTAURANT
The restaurant contains a more energetic atmosphere, connecting with the lively atmosphere of Oxford Street. This is illustrated by the light installation that captures the trails of movement within the restaurant, inspired by the erratic feel of light photography. This stimulating space also contains a show kitchen, allowing members to gain a fully immersive experience within Reverie.

FIRST FLOOR - LOBBY & BAR
The lobby and bar provide members with a space to socialise and connect with each other, thus the connecting seats that link with the bar. The space also contains a private room for members to utilise during a private meeting between two people. The atmosphere for this space is moody and hushed, portrayed within the low level lighting providing a space in which members can relax and feel soothed by.

GROUND FLOOR - PUBLIC REALM & RECEPTION
The public realm acts as an exterior space that is sheltered, welcoming the public to enjoy a taste of the 'Reverie' club experience. It contains a seating area which hints at the continuous, connecting elements within the design of the interior and a digital screen containing the Reverie logo, which also showcases the creative work of Reverie club members. The club is entered from the side entrance of the building, providing a sense of privacy and seclusion for members, into the reception.



REVERIE'S FACADE ON OXFORD STREET



The facade of Reverie ensures a level of privacy for its members by placing the hyperbolic tilting tunnel against the facade's windows, reducing the vision of what can be seen in the interior. The extruding elements such as the tunnel with a seating area on the first floor and the bedroom suites, creates the impression that the interior wants to break free from the constraints of the building, linking to the concept of a 'Wonderland' with a surrealist quality.



LONG SECTION AA

Continuous, flowing structure in the public realm that forms a tunnel (linking to the tunnel element in the design of the interior) and a bench.

The grey barisool and grey elemental concrete stairs provides a neutral tone that balances out the blue and beige tones.

Niches within the vertically rising structure provide a lighting feature for the restaurant and bar, illuminating the dark and moody space. It also links to the spots of lights on Oxford Street at night, creating that lively and energetic feel.

Deep blue hues allows members to feel safe and comfortable due to its soothing quality that blends in with the darkness

The tunnel diverts from the interior and attacks the facade as it suspends over Oxford Street, complimented by a seating space to enjoy the view of the busy street, creating a surreal experience.

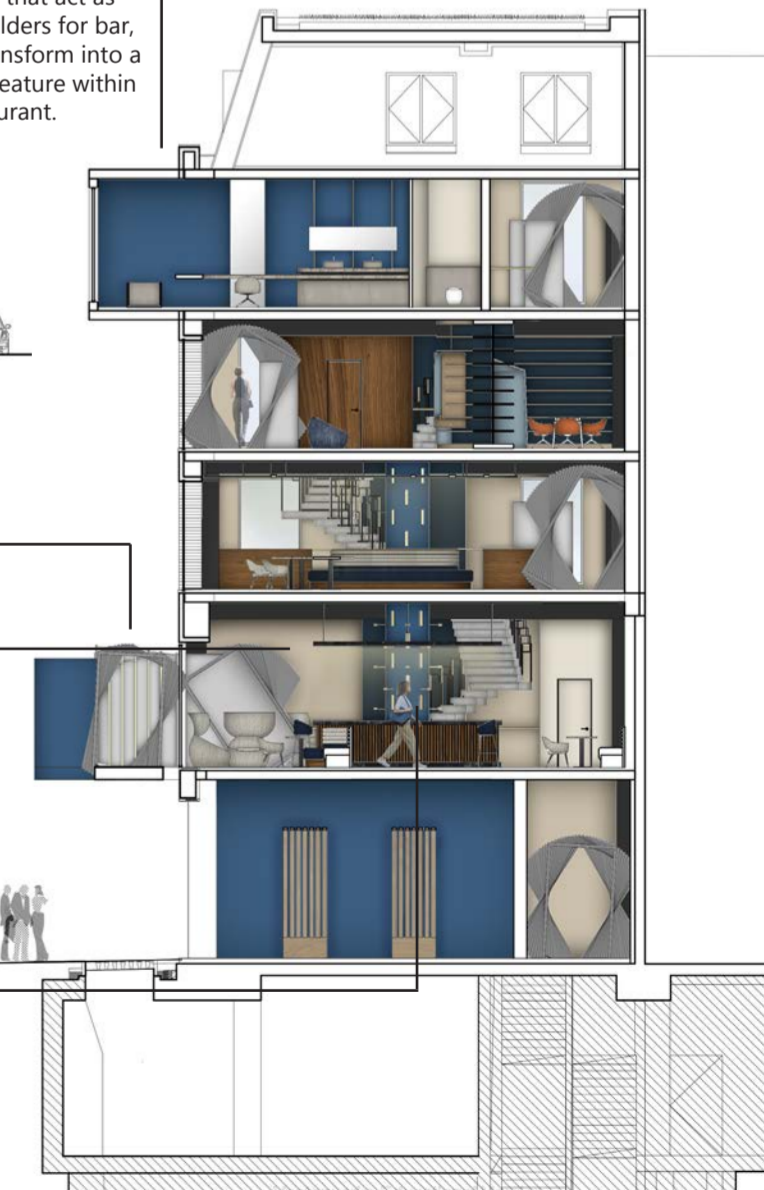
Low level lighting intended to create a moody, hushed atmosphere for the private members club. The light mirrors the shape and materiality of the bar counter, drawing attention to this central element of the space.

Areas of beige provides lighter tones to brighten up some spaces that compliments the blue hues well, providing a balance.

Staircase travelling through void creates the impression of a continuous staircase that feeds into the tilted illusion, enhancing the surreal environment.

Bedroom Suite extrudes out of the building, poking out the facade as it hangs over Oxford street, giving the impression of a luxurious, exaggerated and exclusive experience.

Niches and extruding elements that act as bottle holders for bar, which transform into a lighting feature within the restaurant.



SHORT SECTION BB

REVERIE' S JOURNEY



Public realm with a continuous, connecting bench that forms tunnel-like shapes, hinting at Reverie' s tunnels within the interior. The Reverie logo illuminates the space as it branches off and reflects off the ceiling, whilst the digital display showcases members' work.

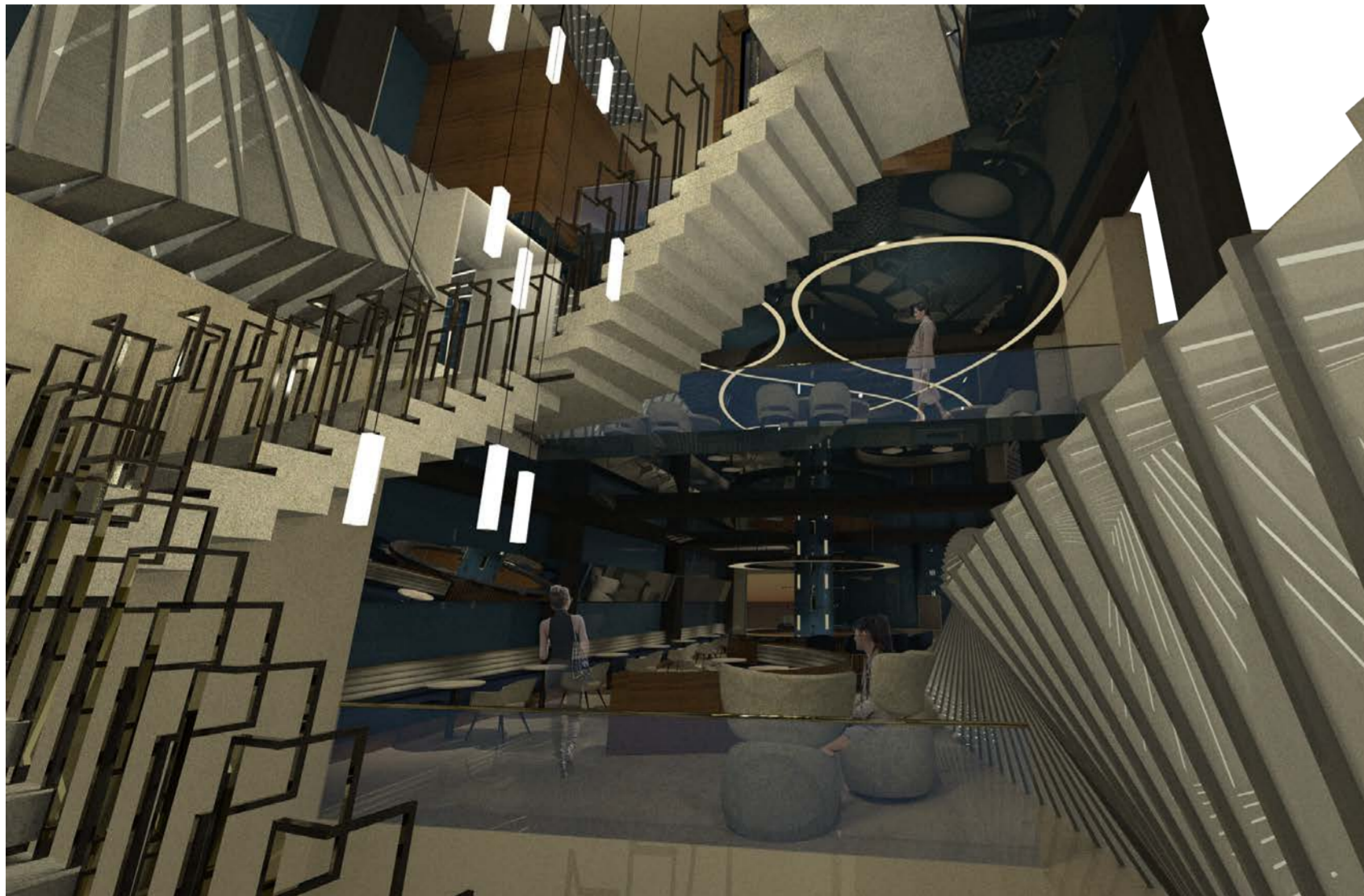
By not using the ground floor as part of the private members clubs, it allows the opportunity to open it up as a **public realm** exterior space which allows the public to use freely, providing exclusivity that gives back to the community. Within this ground floor, a small portion of it would be used for a **sense of arrival** for private members with a secluded segment containing a **reception, cloakroom, corridor, lift, staircase and fire escape**. The purpose of this is that by not actively using the ground floor as part of the club' s activities, it creates a set up that has a **surreal quality in its initial impact** as it drives users through a corridor and then forces them to travel up a staircase in order to reach the first function of the space. It also pulls the private members club further away from the busy street, creating a **separate 'world'** that feeds into the concept of **escapism**. The staircases are the first thing that the user encounters when approaching the end of the corridor and entering into the central space. They feel a sense of **relief and accomplishment**, as well as feeling much smaller for the large triple height space they are inhabiting. This shows an instant shift in emotion from the **confines of the long corridor to the openness and airy atmosphere** that the staircase provides, allowing members to feel as though they are **Alice in changing size**.



Reception - the continuous bench element from the public realm is carried into the reception which leads to a trail of light that guides members into the tunnel.








View looking up at the stairs that travels through the void from the ground floor, creating a tilted frame illusion, linking to the frames of the tunnel.

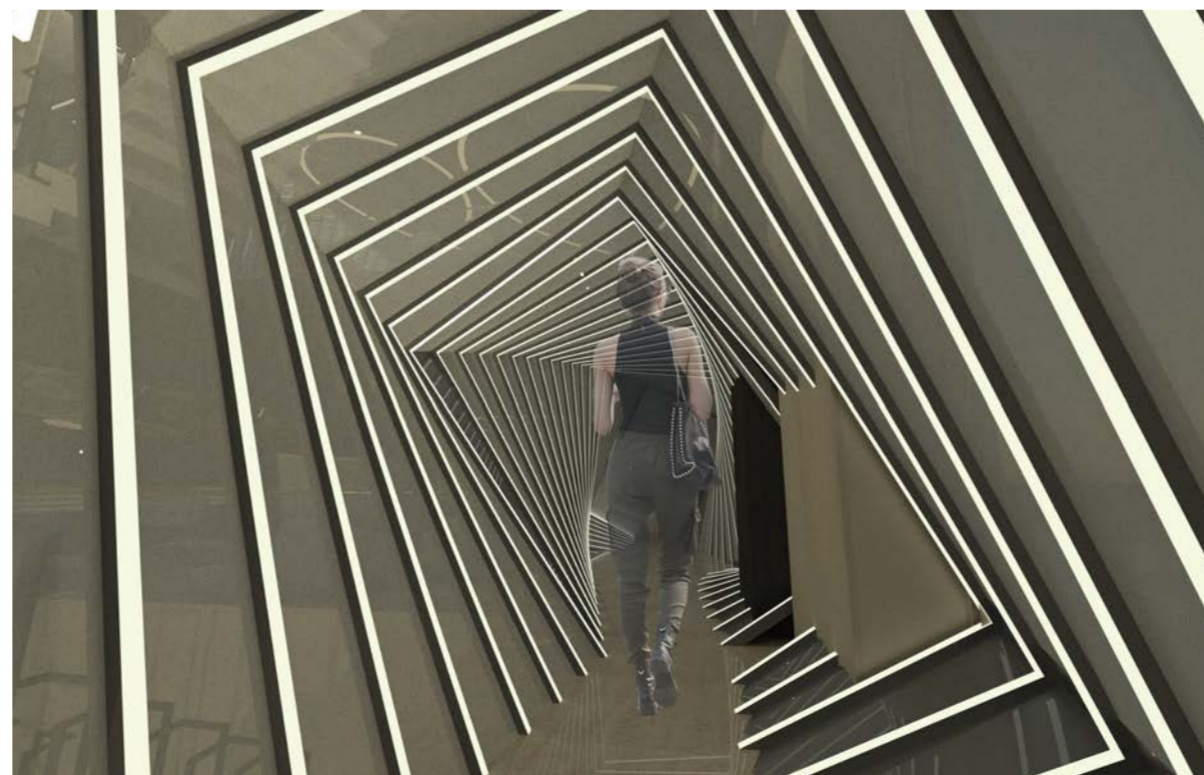


View from the first floor at the top of the staircase, before entering the tunnel. The entirety of the interior can be seen from this single point, creating an erratic, surrealist atmosphere that gives an overall impression of a 'Wonderland'.

The corridor acts as a passageway for the user to navigate through the space and floors, along its edges as it then breaks out into various activities within the central space. The experience of walking along the corridor involves the notion of feeling **confined and succumbed to the illusions of the space**, having a **surreal quality** as it pulls you in and encourages users to feel as though they are **falling into a 'rabbit hole' inspired by Alice in Wonderland**. Emotionally, this would initially make users feel a sense of **confusion** as to why they must undergo this extended journey to reach their function of choice, but also a sense of **excitement** for what they' re about to encounter. It allows them to feel a **sense of exploration** as they enter their **journey of escapism**, and **achievement in reaching their destination**, as opposed to the **rooms which fulfil their needs**.



PRODUCT	NAME	SUPPLIER
	GRACE HIGH STOOL	MDD
	ESTER CHAIR	JOHANSON
	HANA ARMCHAIR WINGBACK	MOOI
	UNIT CONFERENCE TABLE	MDD
	SUNBEAM	SHIMALE PELEG



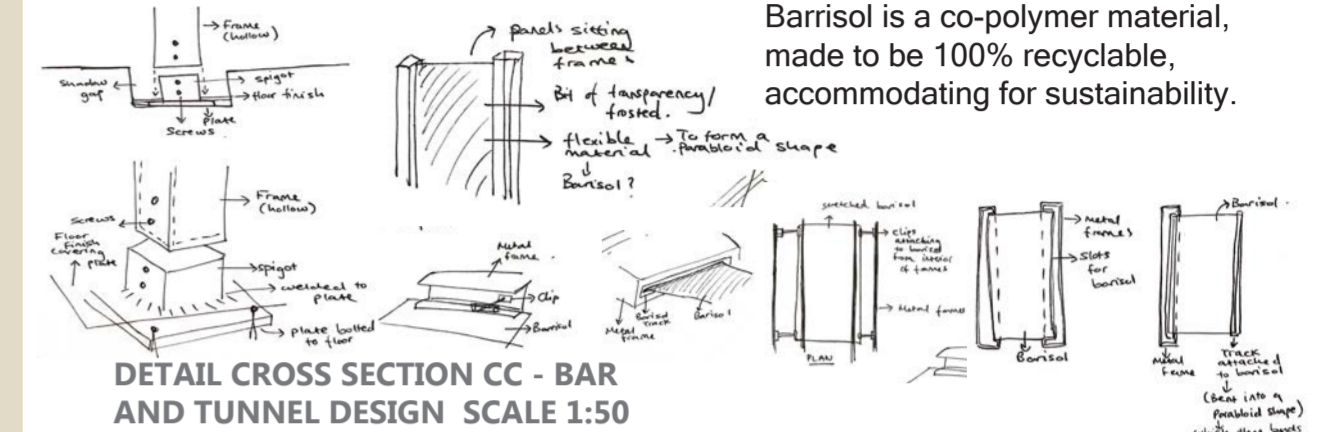
Walking through the illuminated tunnel with tilting frames that provides a sense of movement. The translucent barrisol allows faint views into the interior, providing visual interest during this journey.

DETAIL CROSS SECTION & TECHNICAL DRAWING

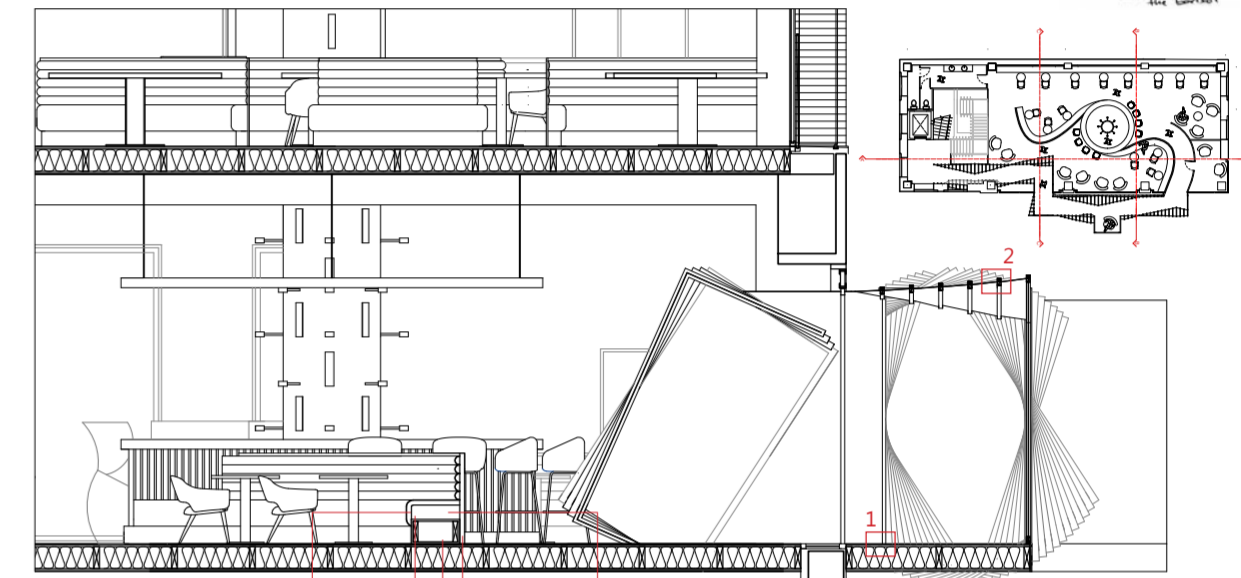


INSPIRATION: BRIDGE OF ASPIRATION

Barrisol provides flexibility, connected to a track system, allowing it to be manipulated into a hyperbolic paraboloid shape. Barrisol is a co-polymer material, made to be 100% recyclable, accommodating for sustainability.

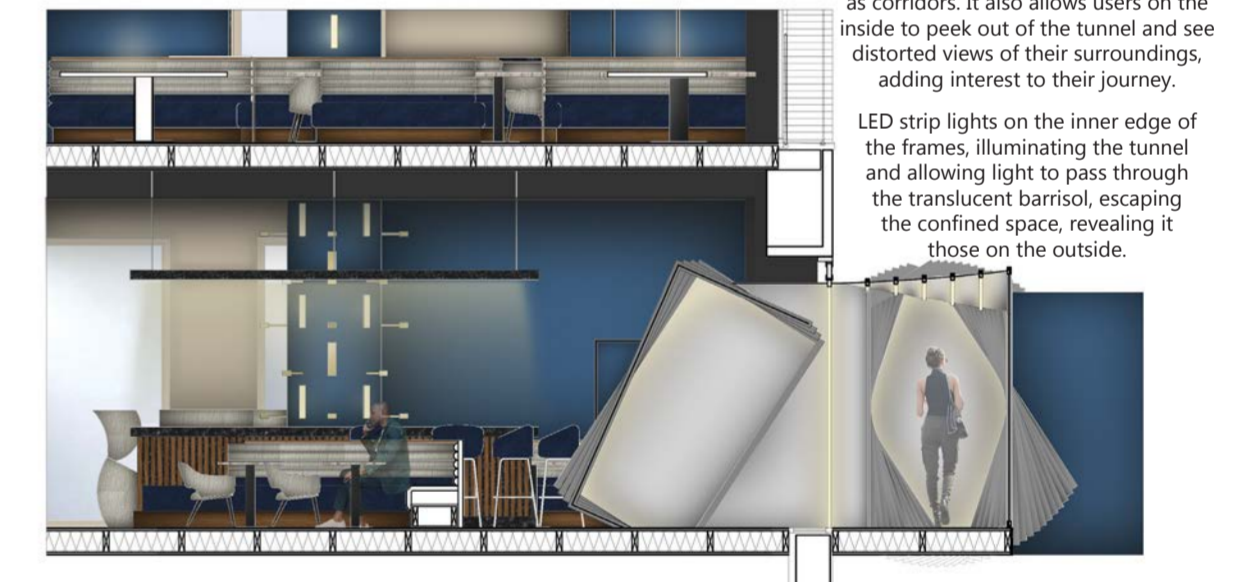


DETAIL CROSS SECTION CC - BAR AND TUNNEL DESIGN SCALE 1:50

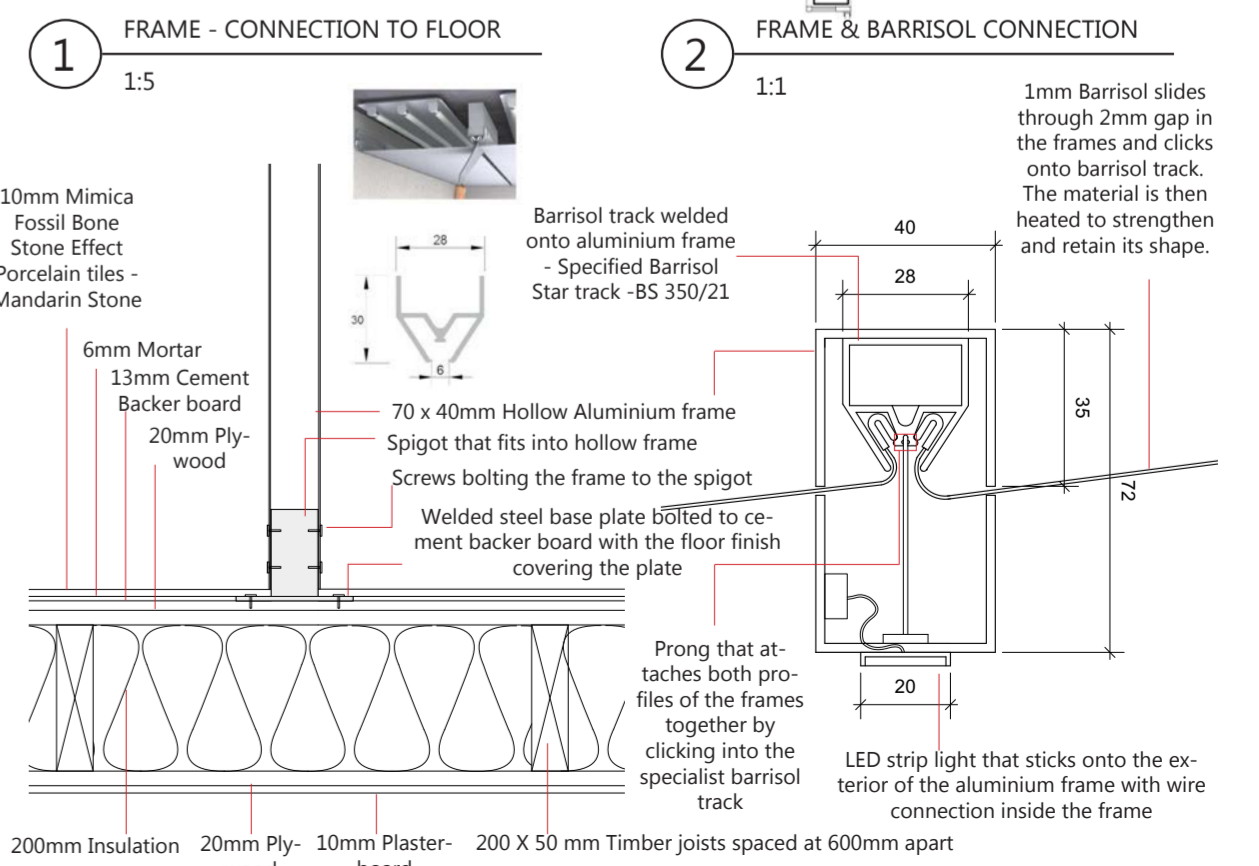


3mm Bemz Teddy Ecru fabric
50mm high density foam
50mm thick Smoked Oak wood backing
150mm Polyester fill

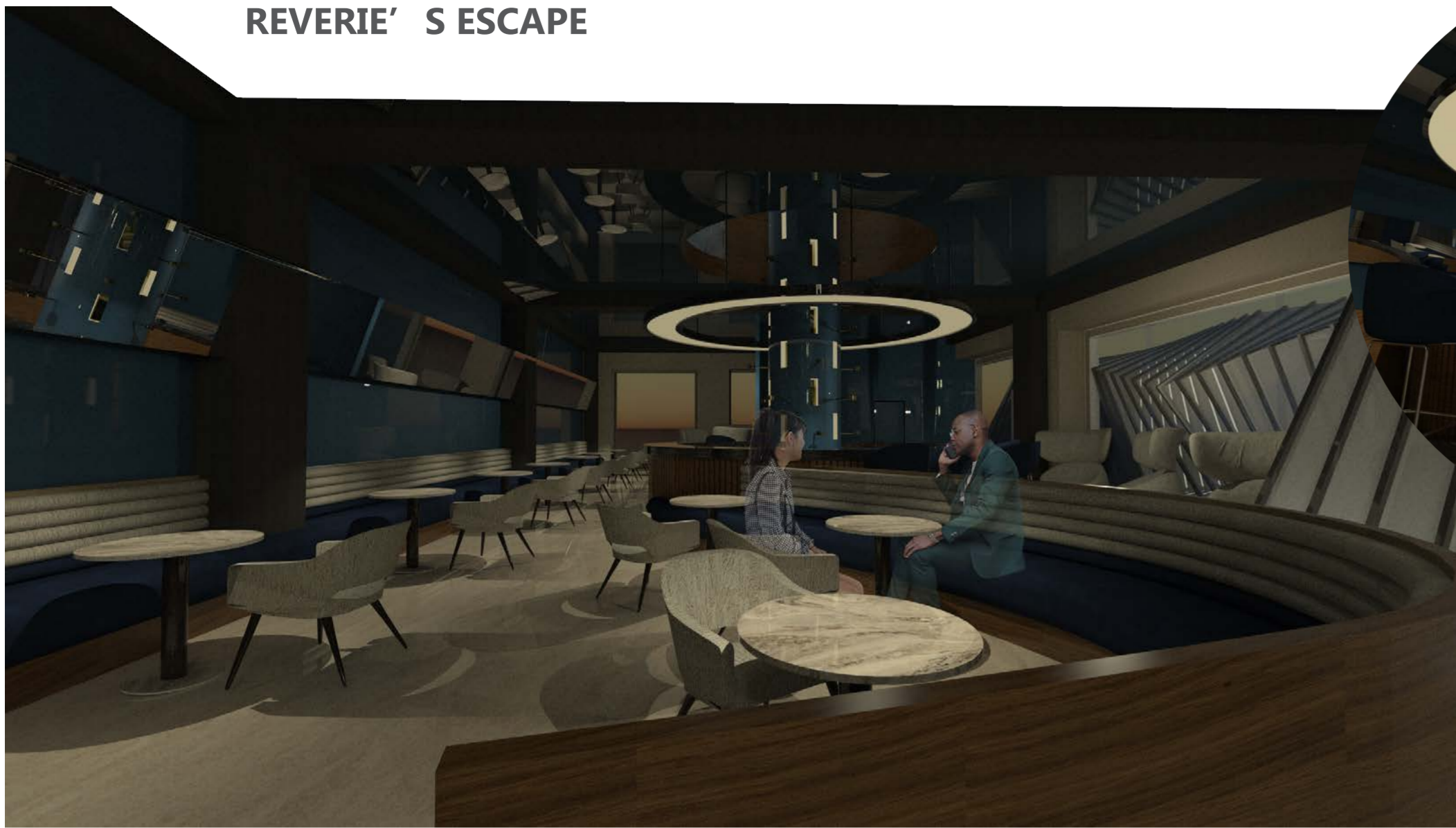
The translucent barrisol allows for distorted figures to be seen from the point of view of people in the exterior, creating a visually interesting dynamic for 'in-between' liminal spaces such as corridors. It also allows users on the inside to peek out of the tunnel and see distorted views of their surroundings, adding interest to their journey.



LED strip lights on the inner edge of the frames, illuminating the tunnel and allowing light to pass through the translucent barrisol, escaping the confined space, revealing those on the outside.



REVERIE' S ESCAPE



Looking up from the bar into the void which leads to the restaurant, seeing the central bar element with illuminated niches for bottles, rise up and form into a lighting feature in the restaurant.

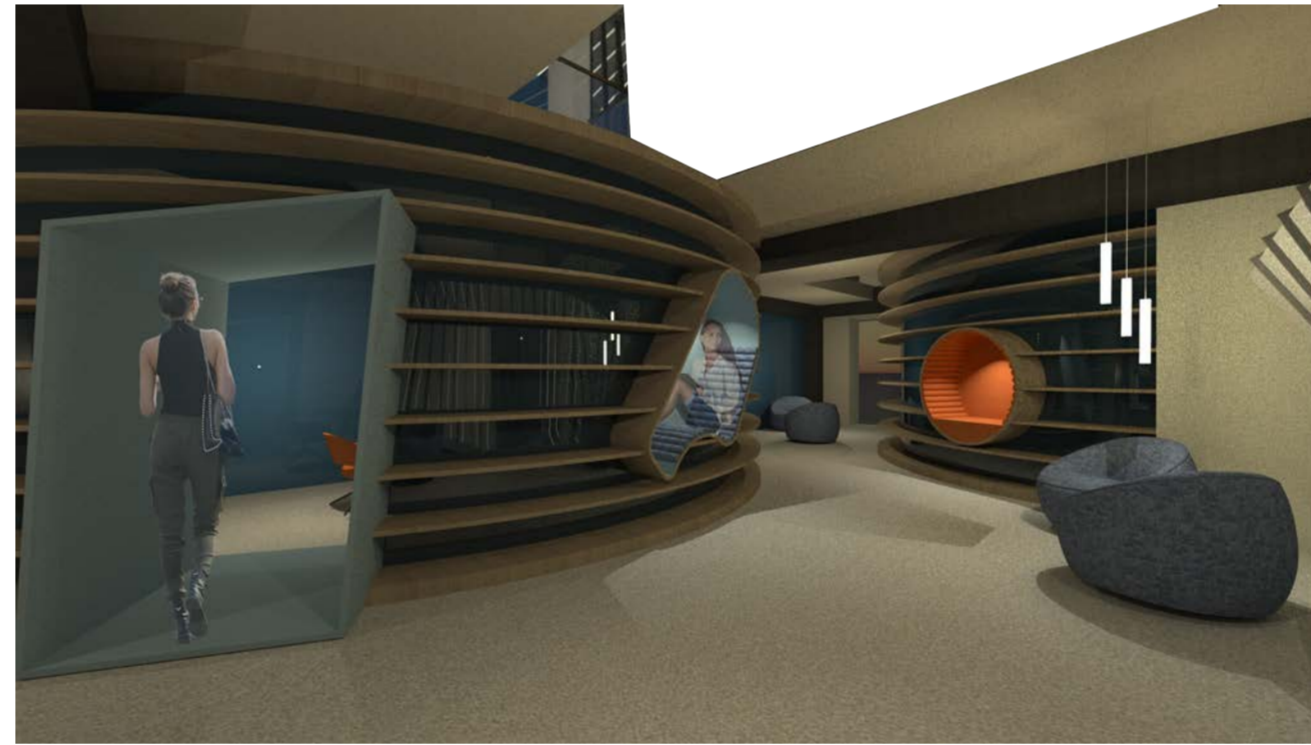
The concept and aim of the lobby and bar is to **'connect'** members together through looking inwards and providing a welcoming environment that creates a sense of community and coming together. This is achieved in the design as the corridor placed on the facade blocks external views onto Oxford Street, allowing members to focus solely on the experience of socialising. The fluid banquette seating emphasises the concept of connection further by attaching to the central bar, allowing the space to feel unified. The **moody and hushed** atmospheric quality in this space from the low level lighting that bounces off the tables creates a calming and mysterious space for users.

View of bar/lobby with tilted mirror on the left wall allowing members sitting in the chair to see activities behind them. The tunnel on the right is shown to be poking into the interior as it comes from the exterior of the building.

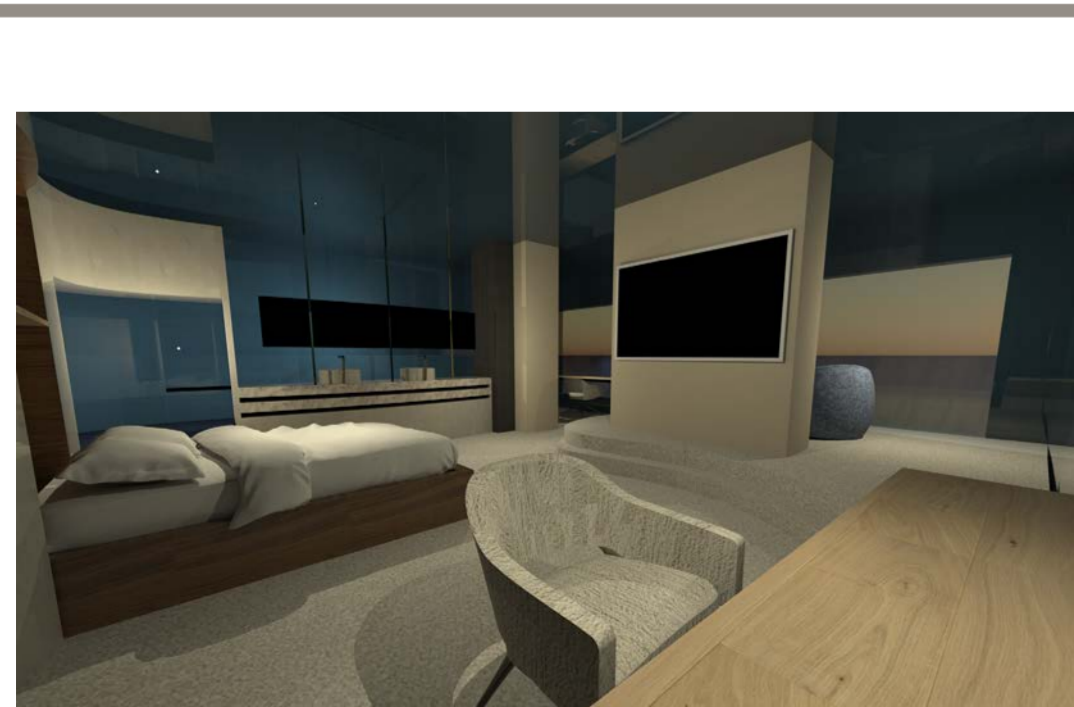
The restaurant at Reverie is a **contemporary casual and fine dining** experience with a more **lively and energetic** atmosphere, demonstrated by the dynamic ceiling light feature that traces movement around the space. This contrasts the lobby/bar below which can be seen through the central void. This relates to the **stimulating and overwhelming** atmosphere of Oxford Street as the facade windows are exposed to the restaurant.



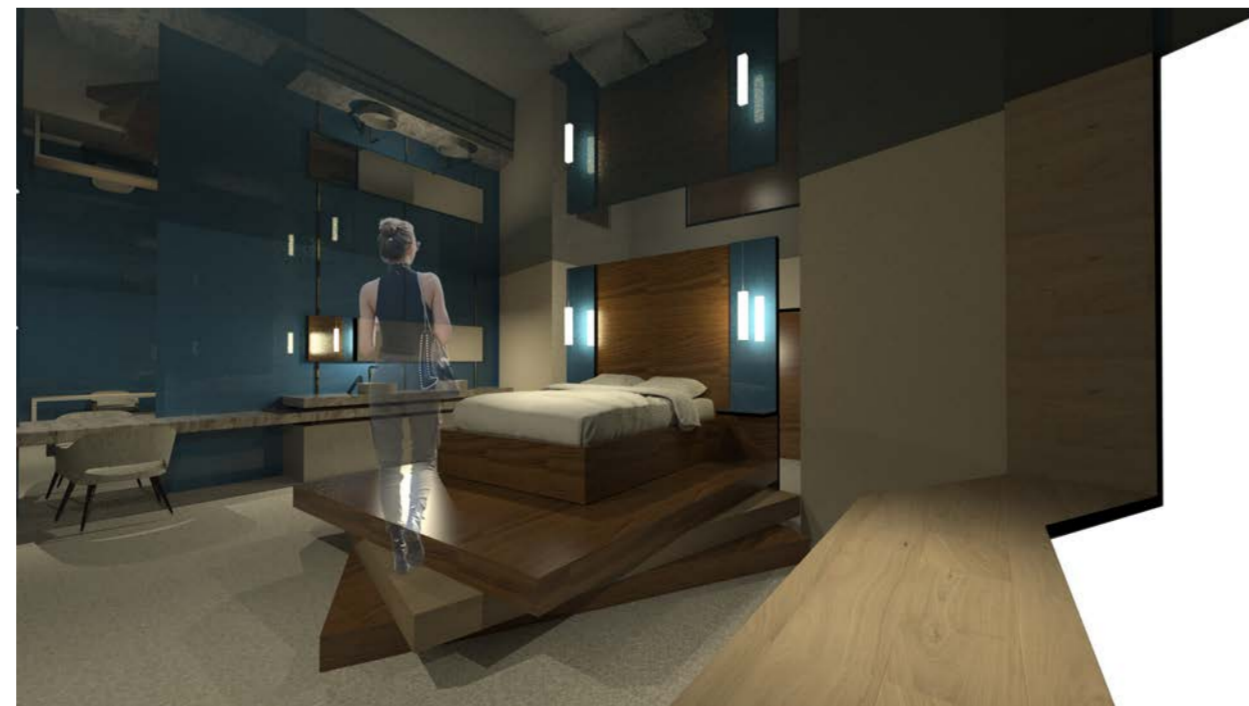
Restaurant - view on the left of a person walking through the tunnel, showing a faint, blurry view of them through the translucent barrisol.



Library - Person walking into the hidden meeting space on the left, and a person sitting in the niche to find a sense of peace in the erratic atmosphere of the club.



Curving structure creates niche for bed which then forms into a seat and a sink areas. The three sticks that hold the mirror for the sink area links to the frames of the tunnel.



Bed base taking inspiration from the tilted frames in the tunnel to create a risen platform to feed into the idea of luxury, importance and exclusivity.

The bedroom suites provide an **exclusive and luxury** experience for overnight guests due to its theatrical and spacious design, such as the elevated bed on a platform which links to the design language of the tilted corridor frames. Each room possesses a **unique** character which provides members with an option to select between a more fluid and curvature design and a angular, fragmented one, suggesting a sense of **juxtaposition** between the two. Due to the comfortable atmosphere this space intends to evoke and its low traffic quantity, the material choice of Lynmouth Twist carpet for the flooring provides a **soft and welcoming** character to the space.

MATERIALITY BOARD & SPEC



MATERIAL	NAME	SUPPLIER	SUSTAINABILITY
1	'Dinnerware' paint with 'Modern Eggshell' finish containing 40% sheen.	Farrow & Ball	Farrow & Ball' s dry waste is either recycled or converted into energy, whilst 97% of its liquid waste is recycled. In 2010, they stripped their less sustainable oil-based paints for exclusively water-based products.
2	'Tintouse Blue' paint with 'Dead Flat' matt finish containing 95% sheen.	Farrow & Ball	Farrow & Ball' s dry waste is either recycled or converted into energy, whilst 97% of its liquid waste is recycled. In 2010, they stripped their less sustainable oil-based paints for exclusively water-based products.
3	'Parma Gray' paint with 'Full Gloss' finish containing 2% sheen.	Farrow & Ball	Farrow & Ball' s dry waste is either recycled or converted into energy, whilst 97% of its liquid waste is recycled. In 2010, they stripped their less sustainable oil-based paints for exclusively water-based products.
4	'School House White' paint with 'Dead Flat' matt finish that contains 2% sheen.	Farrow & Ball	Farrow & Ball' s dry waste is either recycled or converted into energy, whilst 97% of its liquid waste is recycled. In 2010, they stripped their less sustainable oil-based paints for exclusively water-based products.
5	'Stony Ground' paint with 'Dead Flat' matt finish that contains 2% sheen.	Farrow & Ball	Farrow & Ball' s dry waste is either recycled or converted into energy, whilst 97% of its liquid waste is recycled. In 2010, they stripped their less sustainable oil-based paints for exclusively water-based products.
6	Antique Bronze Aluminium Metal	Lazy Susan	Lazy Susan reduce, reuse and recycle to contribute to a positive sustainable environment. Aluminium is 100% recyclable.
7	Polished Gold laminate	Formica	Formica have a 'cradle to gate approach' ensuring they reduce the impacts of the production process in increasing efficiency and using less impactful raw materials.
8	Mimica Fossil Bone Stone Effect Porcelain with a gloss finish, suitable for high traffic areas.	Mandarin Stone	Porcelain can be re-purposed and recycled, and uses less energy to produce and creates less pollution.
9	Black Granite with Crystal finish	Formica	Formica have a 'cradle to gate approach' ensuring they reduce the impacts of the production process in increasing efficiency and using less impactful raw materials.
10	Elemental Concrete with Honed finish	Formica	Formica have a 'cradle to gate approach' ensuring they reduce the impacts of the production process in increasing efficiency and using less impactful raw materials.
11	Corian Arista Beige	Corian	Contains a minimum of 6% pre-consumer acrylic recycled content. Corian' s pre-consumer waste in manufacturing is reduced and recycled into new products.
12	Kajagoogoo Strode - Handmade encaustic cement tiles with terrazzo effect	Claybrook	Encaustic cement has an eco-friendly composition made from natural ingredients, and does not require combustion during production, thus reducing their energy consumption. Willen Rose source their timber from sustainable suppliers. Oak has a well life-cycle assessment as its production process is less energy-intensive, and due to its durability and longevity, oak wood outlasts other materials. Willen Rose source their timber from sustainable suppliers. Oak has a well life-cycle assessment as its production process is less energy-intensive, and due to its durability and longevity, oak wood outlasts other materials.
13	Smoked Oak with a sheen finish	Willen Rose	Willen Rose source their timber from sustainable suppliers. Oak has a well life-cycle assessment as its production process is less energy-intensive, and due to its durability and longevity, oak wood outlasts other materials.
14	Natural Oak	Willen Rose	Willen Rose source their timber from sustainable suppliers. Oak has a well life-cycle assessment as its production process is less energy-intensive, and due to its durability and longevity, oak wood outlasts other materials.
15	Corian Smoke Drift Prima	Corian	Contains a minimum of 6% pre-consumer acrylic recycled content. Corian' s pre-consumer waste in manufacturing is reduced and recycled into new products.
16	Teddy Ecru containing 77% rolefin and 23% Polyester	Bemz	Bemz has a sustainability strategy through circularity which prolongs the life of furniture; sustainable supply chains; sustainable materials with less environmental impact and climate protection.
17	Simply Linen in Navy Blue with 55% cotton and 45% linen and a brushed, peachskin finish.	Bemz	Bemz has a sustainability strategy through circularity which prolongs the life of furniture; sustainable supply chains; sustainable materials with less environmental impact and climate protection.
18	Conscious Vintage Velvet in Mineral Blue with a recycled, medium length-pile, smooth to the touch with a muted lustre	Bemz	Consciously sourced 100% Recycled PET
19	Lynmouth Twist Carpet in colour 'Cloudy Bay' with a 100% polypropylene fibre content.	Carpentryright	Carpentryright' s underlay range for carpet contains a product derived from recycled tyres, contributing to waste reduction and promoting a circular economy.
20	Barrisol stretch ceiling with a translucent finish	Barrisol	Barrisol sheets are 100% recyclable and can be used in other products. Barrisol stretch ceilings have a longevity of more than 40 years, increasing its life cycle.
21	Outdoor Velvet in the colour 'Rust' with a short pile that has a smooth feel.	Bemz	Bemz has a sustainability strategy through circularity which prolongs the life of furniture; sustainable supply chains; sustainable materials with less environmental impact and climate protection.
22	Slate grey Aluminium Metal	Lazy Susan	Lazy Susan reduce, reuse and recycle to contribute to a positive sustainable environment. Aluminium is 100% recyclable.