

CALAN WOMEN SAFE HOUSE

Post pandemic, like never before, women and children have found themselves locked constantly with their abuser. Domestic violence cases increased by 25-33% globally in 2020, and numbers are in continuous rise since then. So much that Domestic Violence has been defined as COVID VIOLENCE, as in the inescapable violence created by covid-related lockdowns.

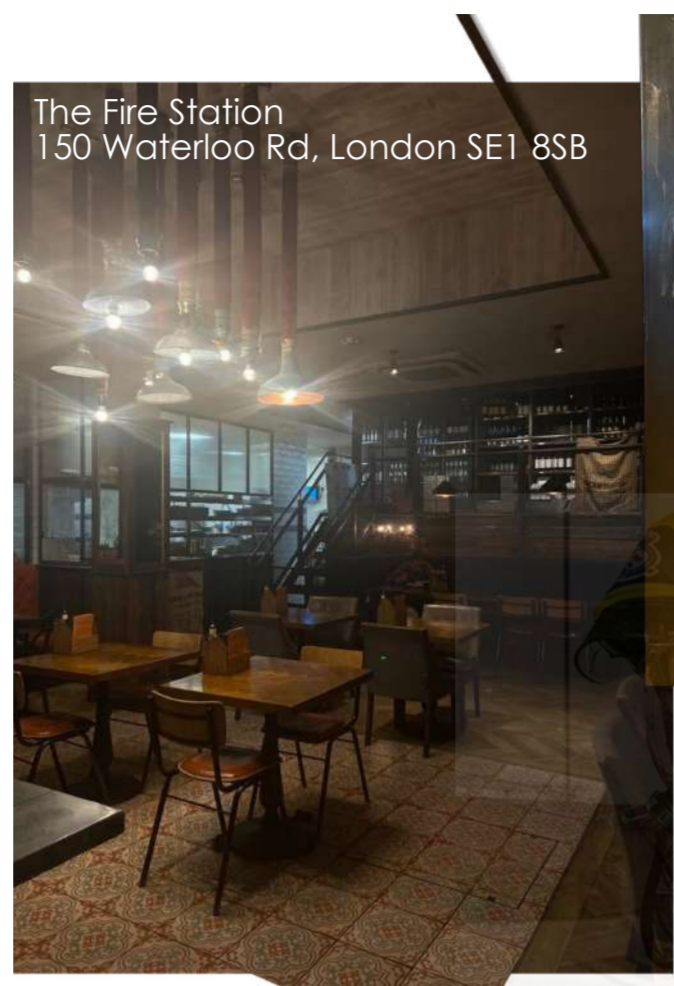
Focusing on the ideal opening of a new branch of Shelter, CALAN, aiming to contain all the parts of the **rehabilitation** process after escaping from domestic violence in one structure. Designed to assist both guests and members of staff from the first rescue, through a long stay use of the facility to heal and **empower** the guests, ending with the **reintegration** of the user in the society.

However, the project aims to take the Calan, Women Safe House to a new level by introducing it to the 'high-street'. Calan focuses part of its design (on the Ground Floor) to cater a Café space where links to the trauma of abuse are subtly introduced in the design to raise awareness about the issue, as well as to normalise the 'domestic abuse talk'.

Located next to Waterloo Train Station, in London, making the site strategically accessible for people coming from all around the city to access the facility. At the heart of the London Borough of Lambeth, where the biggest amount of domestic violence cases and littlest amount of help facilities and shelters have been located.

In Calan, the healing process is highlighted through a site dominant intervention that allows for two metal 'ramp-like' structures, used as devices to travel through the space in a way that does to recall anything the guests have ever lived before, to treat the rehabilitation process much like a retreat and self-discovery opportunity more than an hospitalisation.

The design takes into account the need for a **sense of freedom of choice**, long lacking from the guests' lives, creating spaces they have never seen before. Spaces that we, as humans, have not been taught how to inhabit, leaving the guests to choose between options, **'talking' and engaging with the structures** to learn how to travel through them, encouraging decision making and self-choice.



STRUCTURE AS A HEALING PROCESS

RED

- Excitement
- Motivation
- Confidence

20% Raising awareness
80% Women Safe House

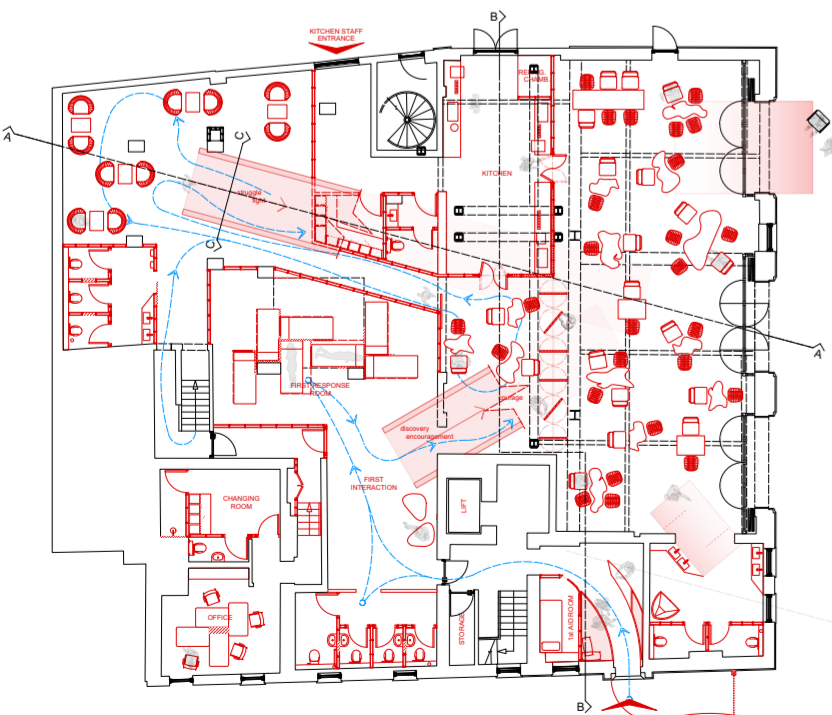


CALAN

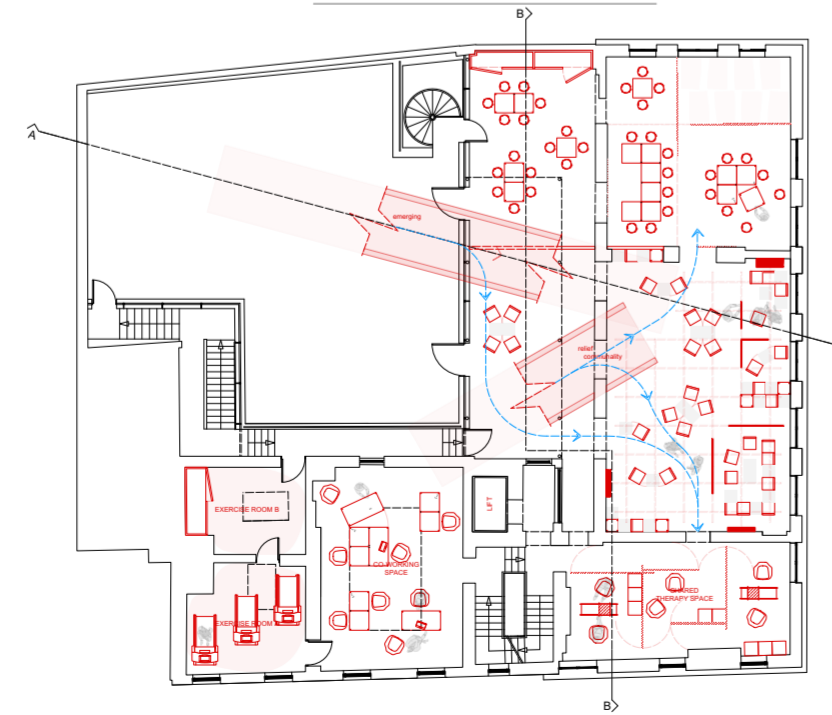
ESCALATION



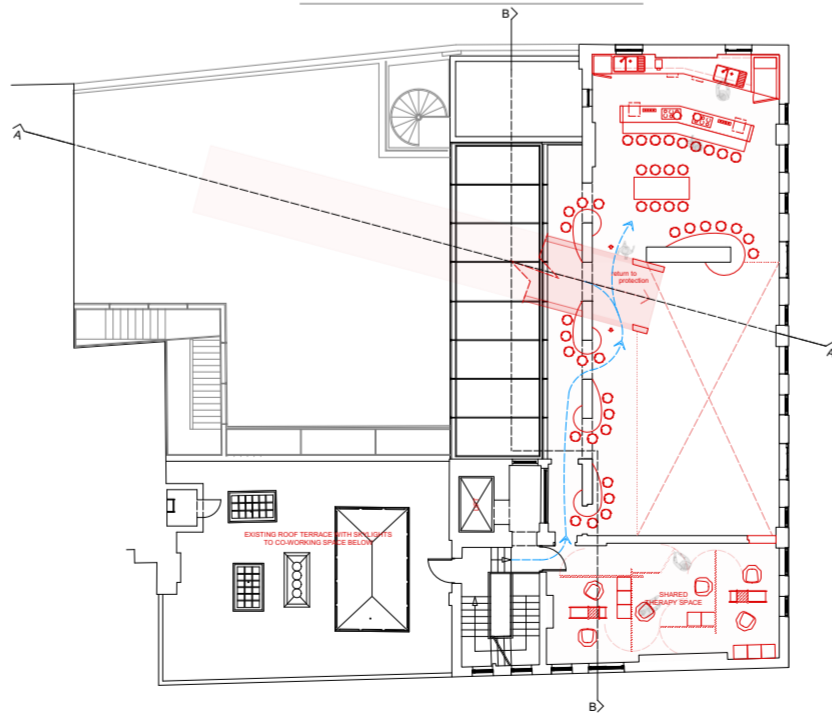
📍 = Shelters/Safe Houses



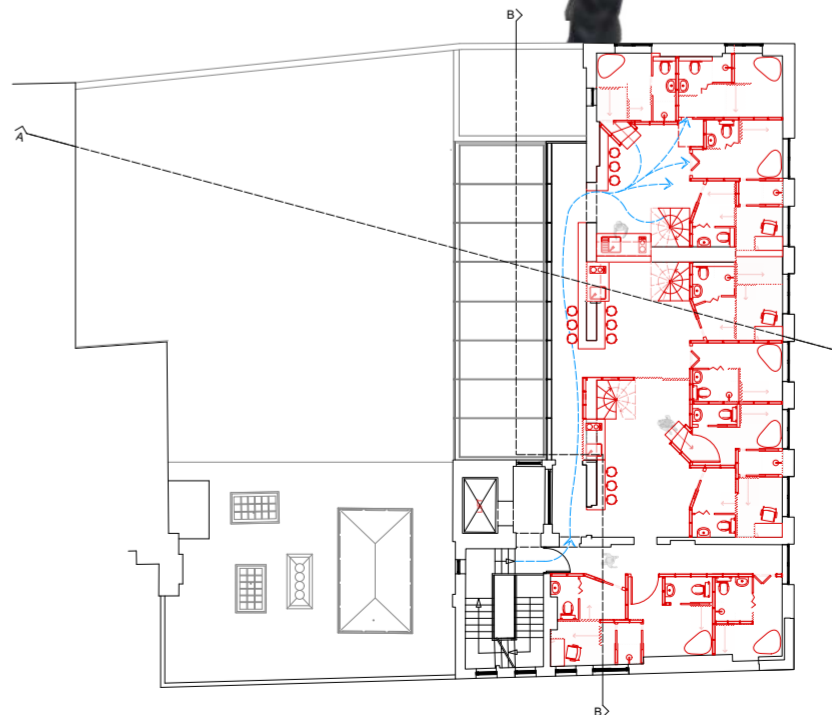
Ground Floor Plan
The main focus is laid towards **Short 24 hours stay in the 1st Aid Room** before being relocated to the upper floors. As well as the Calan Café which is a public space aiming to **raise awareness and funds against domestic violence**



First Floor Plan
Landing of both structures onto the 1st floor common spaces aiming for the guests to **interact** with them and to **not feel intimidated** by them



Second Floor Plan
The **benefit of cooking for rehabilitation** from traumas is connected with the experience of togetherness in the open 'dining area', where the tables wrap around the existing structure and at the same time engage with landing of the new structure.



Third Floor Plan
The idea of creating **multiple spaces tied together by the feeling of normalised imperfection**. Therefore the leading to design is of multiple smaller spaces that require the engagement of the guest, adapting them to their needs



Fourth Floor Plan
Reimagining the idea of healing together but with privacy... The design giving and **enforcing the healing** process, aiming to **EMPOWER** the guests by allowing them to find their own personal way to heal

STRUCTURE AS HEALING PROCESS

The whole space is characterized by the **unusual ways to travel** through it, aiming to **detach the guests from a normal way** of living he everyday life and at the same time represent the struggle of the healing process. The Structure B presents **visually randomly placed sets of ropes, steps and handles**.

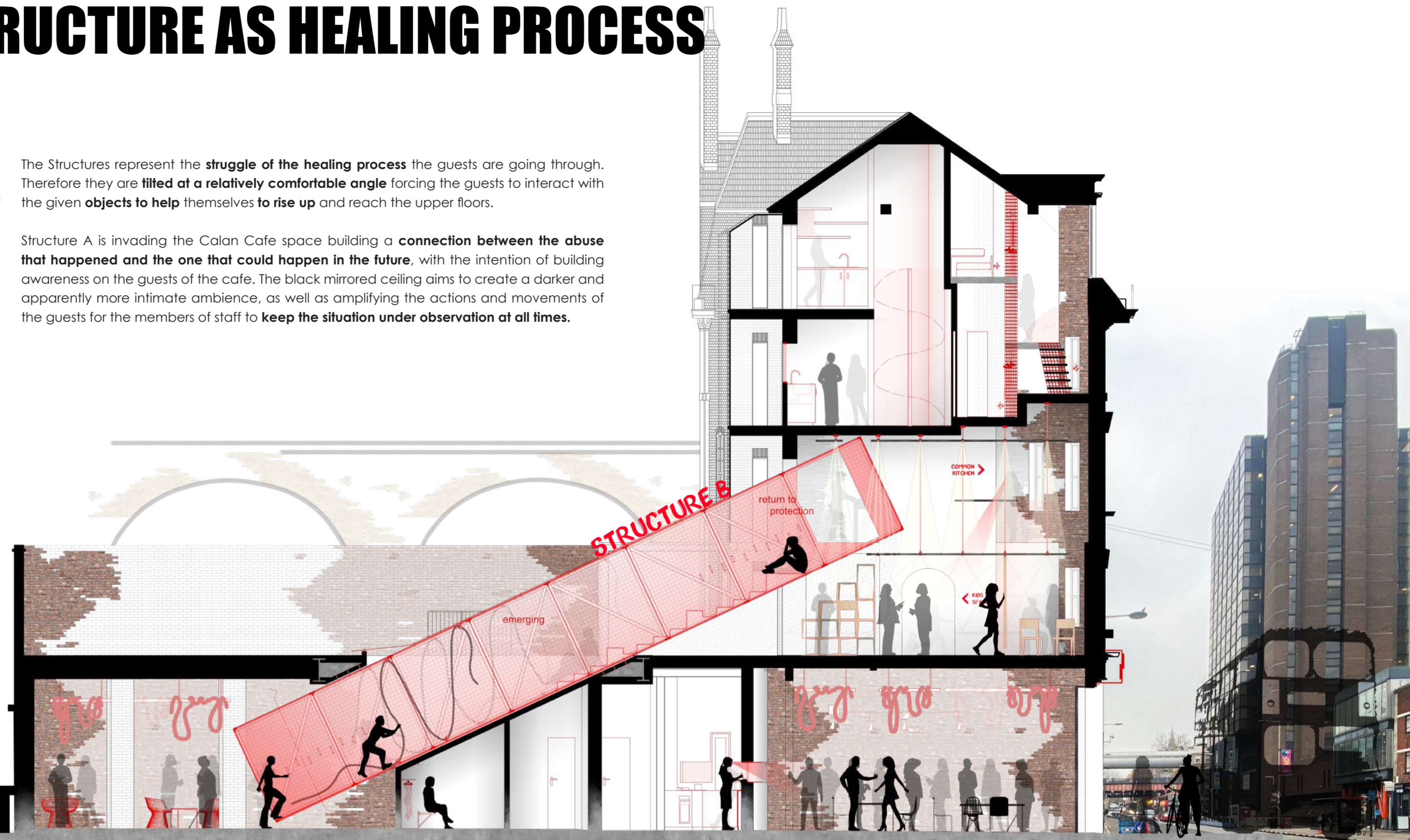
Bricks are present in most of the spaces reminding of the historical origins of the space. **Transparency** of the red mesh, aims to transmit a **feeling of truthfulness** of the space. Playing with **shadows** to create an **emotionally surrounding and engaging space**.

The Structures represent the **struggle of the healing process** the guests are going through. Therefore they are **tilted at a relatively comfortable angle** forcing the guests to interact with the given **objects to help themselves to rise up** and reach the upper floors.

Structure A is invading the Calan Cafe space building a **connection between the abuse that happened and the one that could happen in the future**, with the intention of building awareness on the guests of the cafe. The black mirrored ceiling aims to create a darker and apparently more intimate ambience, as well as amplifying the actions and movements of the guests for the members of staff to **keep the situation under observation at all times**.



**REHABILITATION
EMPOWERMENT**



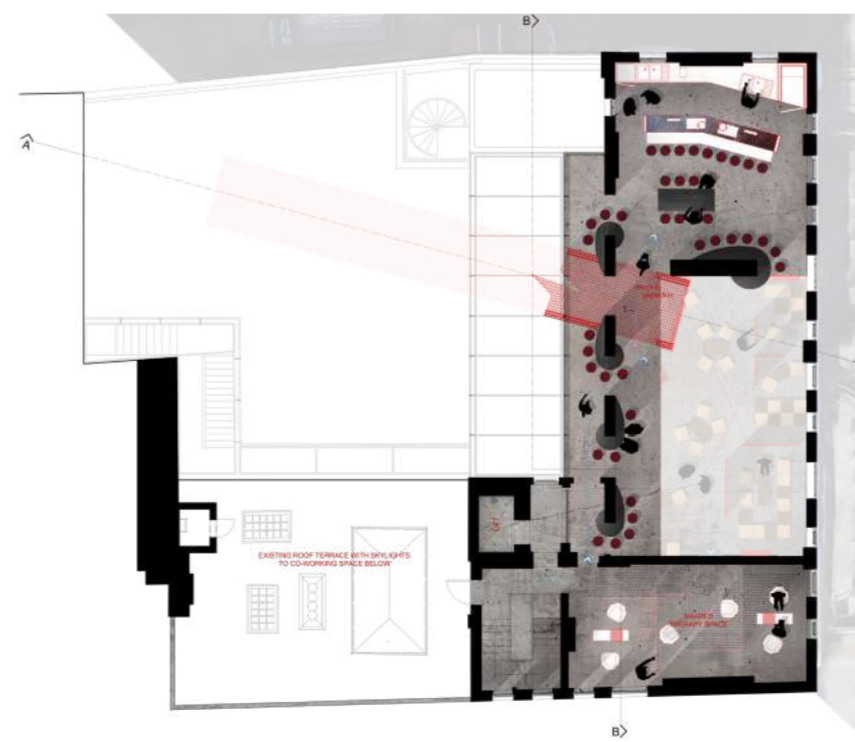
Ground Floor Plan

The Ground Floor almost solely illuminated by artificial light creates an almost melancholic feel in the cafe room a reassuring one in the First Response Room, looking safe and protected from the dangers of the outdoors.



First Floor Plan

The 1st Floor affected greatly by natural light, especially during Sunset and Sunrise creating dramatic shadows. If the panels are moved, shadows contribute to the creation of spaces twice as private and comforting.



Second Floor Plan

The 2nd Floor is characterised by the landing of Structure B as well as a great void connecting the Dining Area to the 1st Floor. Mostly illuminated by natural light, this space is influenced by the Structure B shadows.



Third Floor Plan

The 3rd Floor is characterized by the entrances to the private rooms, a restricted social occasion in which the space concentrates on smaller groups of guests, for them to hang-out in a more private setting.



Fourth Floor Plan

The 4th Floor is mostly focused in building connections between guests in a sleep-related setting. However, the rooms for women with younger children are allocated in one single floor and connected in other ways.

EMPOWERING CIRCULATION



EXPLODED AXO OF A ROOM

Structure A & B dictate the movement of the spaces surrounding them, forming corridors and rooms with tilted walls and furniture opposing to the flow of the original building

Natural light is granted to every room either by a skylight or a normal window (at times both) creating different effects and levels of light in every room

Rooms connections offer the opportunity to the guests to bond and support each other in moments of solitude and grief through openings carefully placed in the most sensitive parts of the building (eg. above beds, public toilets etc.)

Level 3 - Sleeping area
Specific for the sleeping process and hanging of clothes, light or personal belonging

Level 2 - Working area
Completely flexible and space-saving allowing for each item to be closed-up and hang from the wall whenever not needed

Level 1 - Living area
Addressing the processes of cleaning, dressing and possibly 'hanging-out' in a more casual-looking part of the space



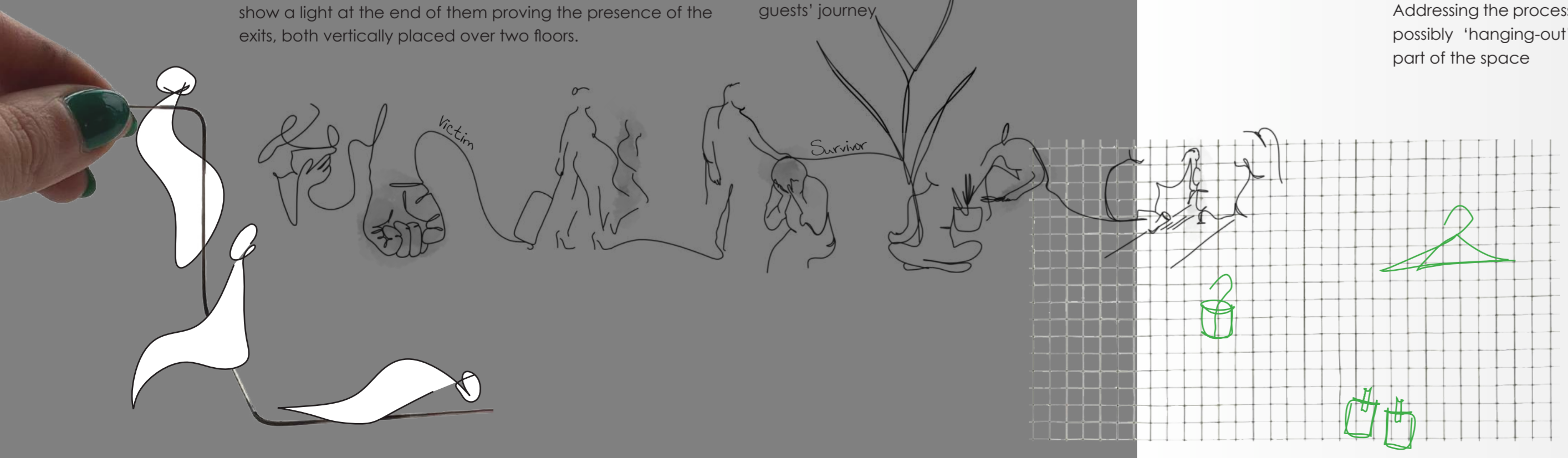
The guests are guided across the building through marks of red paint forming arrows and pointing the direction needed. The colour symbolizing Excitement, Motivation & Confidence

The metal flooring forming the Calan Cafe threshold is the first interaction of the public with the red patterns also found in the rest of the space, highlighting its symbolic importance and dualism between positive meaning and awareness of the danger

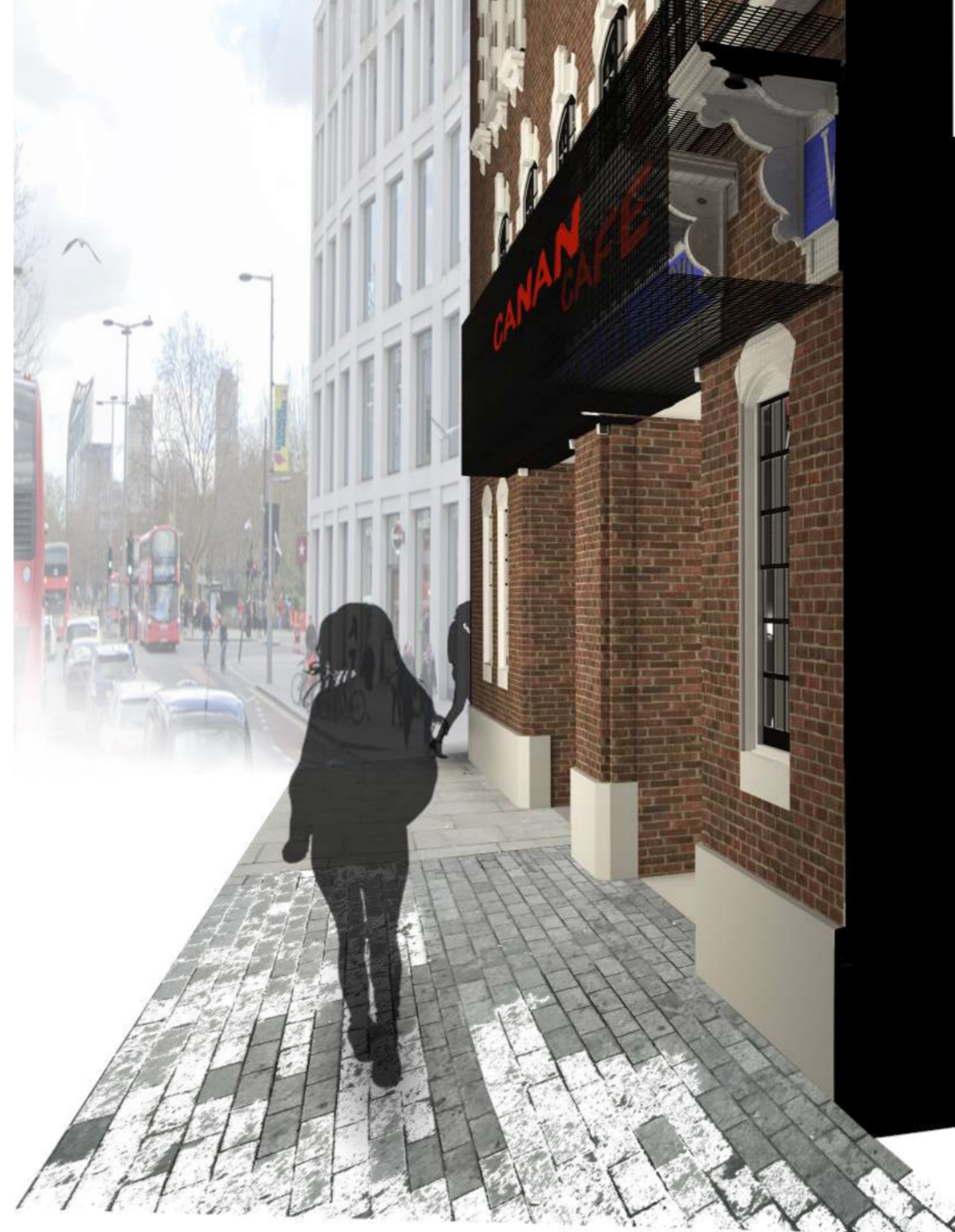
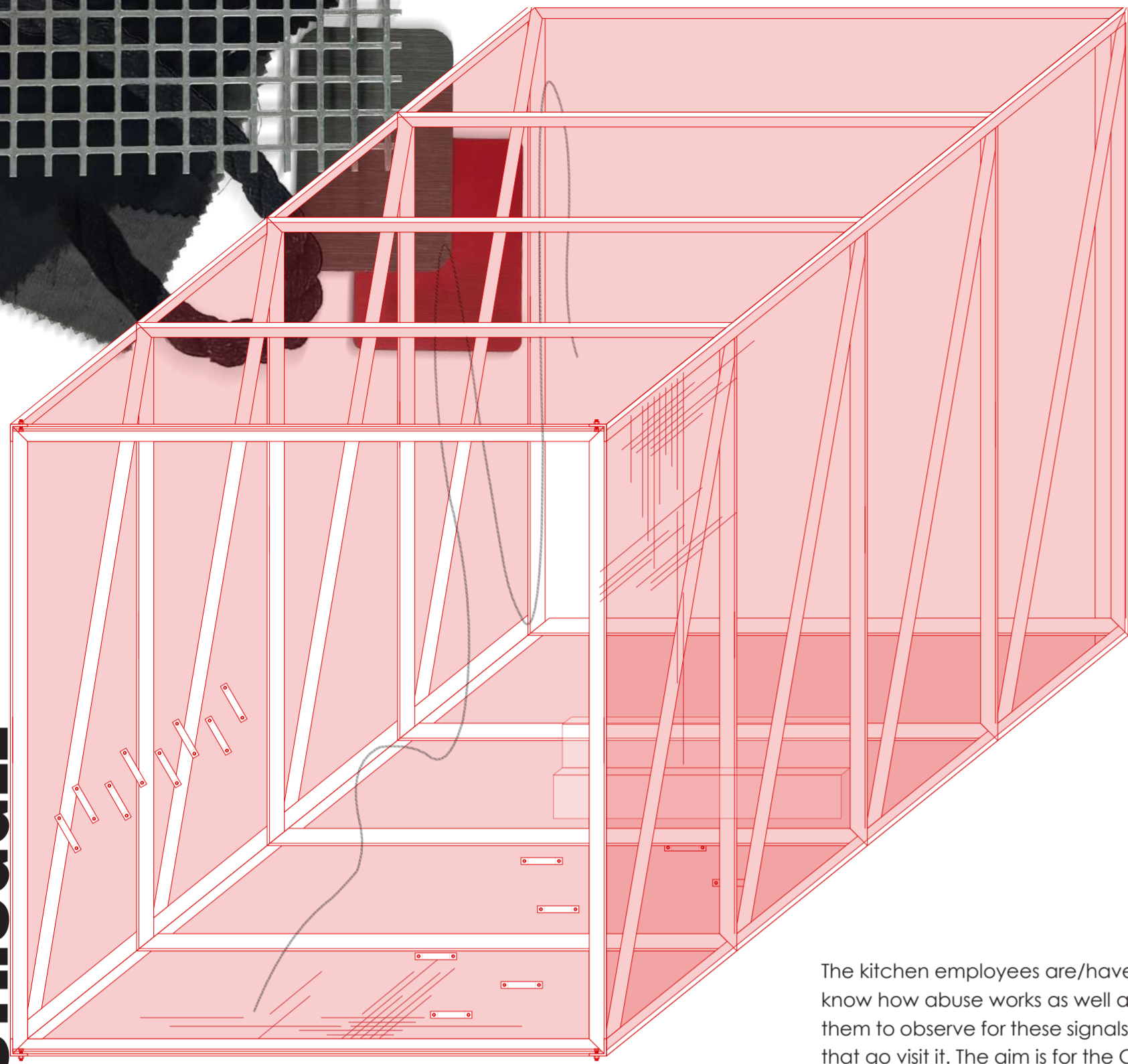
The Structures A & B are placed central of the space and away from the stairs making it look like the only way around the building and encouraging the guests to use them. These show a light at the end of them proving the presence of the exits, both vertically placed over two floors.

The side entrances are dedicated to the Supplies Off-load and the live-out Kitchen Staff working in the Cafe as part of the Reintegration process. This creates a more discrete and 'out-of-the-way' functional option for the business-related part of the 'Calan - Women Safe House'

The materiality reflects the wayfinding solution by accumulating red furniture in the hotspots of the building, the spaces that unexpectedly create the most impact on the guests' journey

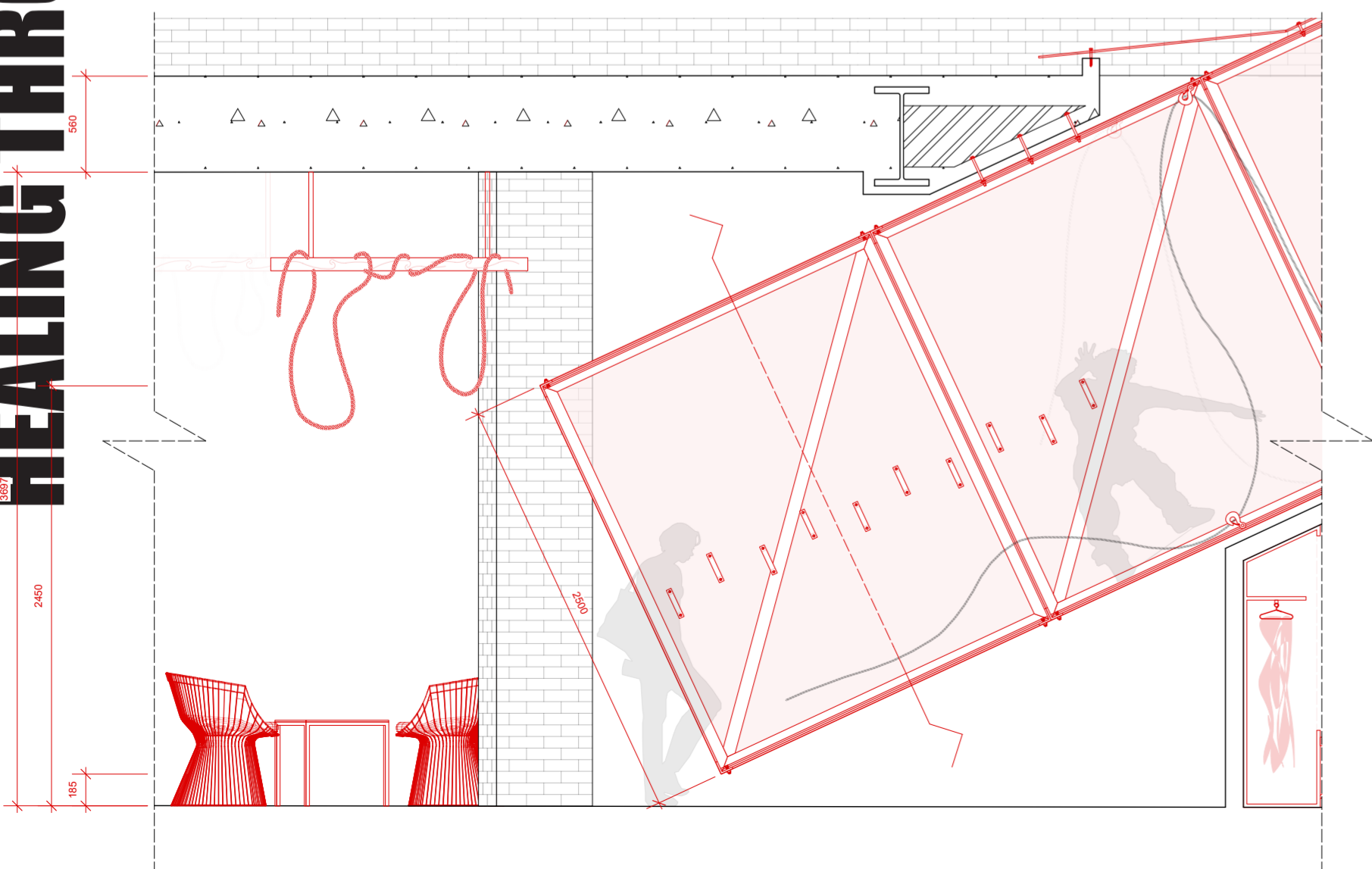


HEALING THROUGH STRUGGLE



The kitchen employees are/have been guests at the Calan Safe House, they know 'the face of the abuser', they know how abuse works as well as toxic relationships and red flags. Therefore the slot in the kitchen wall allows for them to observe for these signals on the people inhabiting the Cafe space, making it a safe space for the women that go visit it. The aim is for the Cafe to become a **space where people can go to safely meet someone they do not know in person.**

Both tunnels are structured in equal pieces with thin external metal structures welded together. The **metal mesh** being bolted to the main structure allows for it to be **replaced whenever worn out** and lacks of slippery resistance, ensuring the overall **durability** of the structure and it's **sustainable value over the years.** At times the Structure B is allowing for bigger and smaller steps to be placed as a **resting place, facilitating its use as a 'hang-out' space** more than just a Transitional space.



STRUCTURE A

STRUCTURE A
Leading from Ground Floor to 1st Floor and creating an unusual way to travel through spaces, aiming to create a **struggle path** that is not in any way related to any space inhabited before therefore not triggering any trauma.

First Floor - Common space visual



CROSS-CONNECTIONS BETWEEN FLOORS

The grid constructing a **pattern connecting First and Second Floor** supplies light to both floors through the **LED upper grid** and flexibility on the First Floor through a **railing Lower grid**

FLEXIBLE MOMENTS OF PRIVACY

Panels allowing flexibility through the space and encourage the guest with a feeling of **empowerment** deciding the levels of privacy needed for the interactions with each other

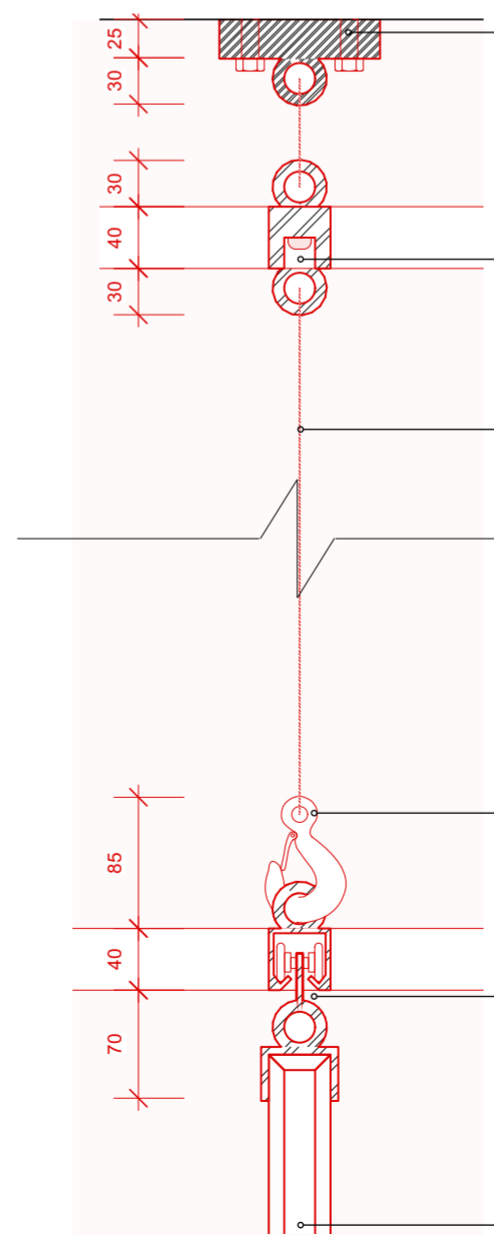
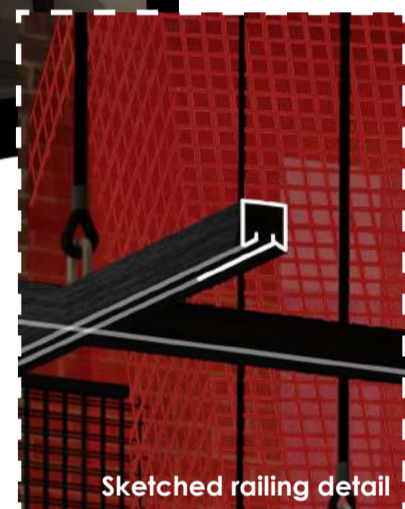
BRANDING & WAYFINDING

Around the building, strategically placed painted directions are shown in positions where they can be seen the most. The idea of the paint itself connects with the concept and brand identity, not hiding but **showing, sharing and embracing the sufferance**, by doing so **Empowering the guests**.

ADAPTABILITY AND MOVEMENT

Space designed if needs to be freed-up the lightweight furniture can **moved, piled and secured** with each other and eventually forming possible **shelves and storage**

EMPOWERMENT SECTION BB 1:100



- 25mm Eye Plate** Stainless steel powder coated RAL 9005 screwed to ceiling
Rope Services UK
www.ropeservicesuk.com/
- 3500K LED Strips** fixed to bespoke metal railing
299 The Light Engineers
<https://299lighting.co.uk/>
- 3 strand twisted rope** RAL 9005, L30m x W10mm hanging from Cosby Lifting Hooks
Trust-k Cordage (UK based)
<https://cordagemaker.com/>
- Cosby Lifting Hooks** Powder coated RAL 3000
Direct Industry <https://www.directindustry.com/>
- Heavy-duty panel track**, Stainless steel powder coated RAL 9005
Camstage Ltd
<https://camstage.com/>
- Bespoke plywood panels**
Wood Sheet Warehouse
<https://www.woodsheets-warehouse.co.uk/>

- Day time 5am-12pm
- Afternoon time 1pm-8pm
- Night time 8pm-4am

