

ART OF REPAIR AND REUSE

COBBLER WORKSHOP - SHOESPA

Anna Motmillere

The project brief is focused on sustainable practices and design. The planet is facing a climate change crisis which holds us accountable and asks of us to think of a more sustainable future both in our everyday lives and design. This crisis also affects different companies and how they are perceived, more and more businesses are starting to pay more attention to these issues and making them their priority in their brand, whether it would be how they provide their service, obtain their materials or simply their company morals. This is why it's especially important to find ways to both promote creativity, innovative and sustainable design.

The space aims to create a welcoming and functional space that reflects the values of craftsmanship, sustainability, and heritage of cobblers practice. The practice is envisioned as a place where shoes and leather goods are repaired, restored, and celebrated for their longevity and character. The design conveys a sense of authenticity, craftsmanship, and a connection to traditional techniques while embracing a contemporary aesthetic.

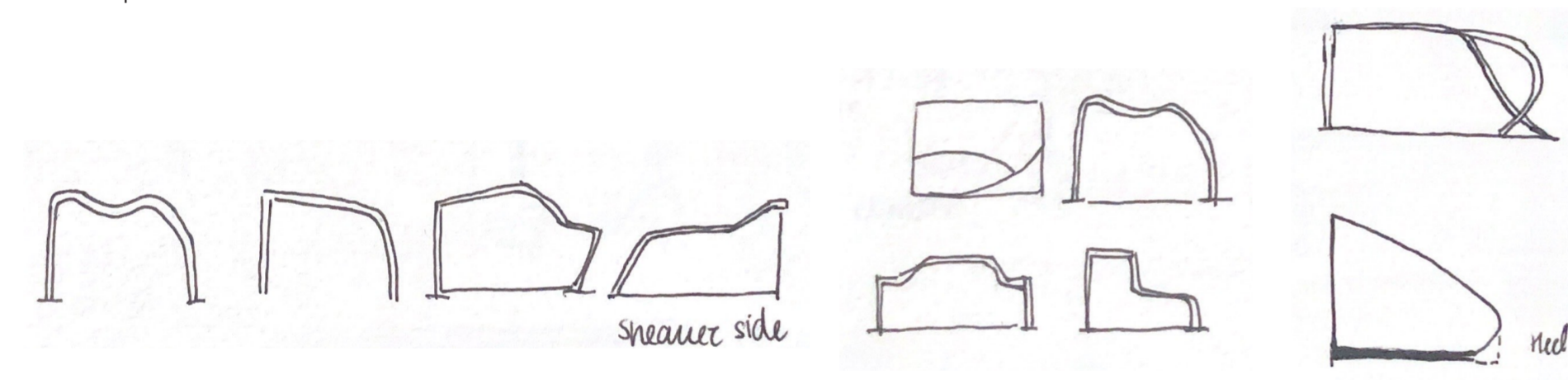


DEVELOPING CONCEPT



When building a long-lasting, environmentally friendly design it's important to seek innovative and exciting ideas that will be current for long periods of the time. The design has to be classic yet have a modern feel to it. Similar traits apply to cobbling as a practice, which is why parts of it can serve as inspiration for the concept of the design. Cobbling is a sustainable practice for several reasons. Firstly, it promotes the reuse and repair of shoes and leather goods, extending their lifespan and reducing the need for new production. This helps to conserve resources, energy, and raw materials that would be required for manufacturing new products. Cobblers also contribute to the circular economy by diverting items from landfills and reducing waste. Additionally, cobbling often involves traditional craftsmanship techniques, which can preserve cultural heritage and support local economies. By providing repair services, cobblers encourage consumers to value quality, durability, and the longevity of their possessions, promoting a shift away from disposable fashion and fostering a more sustainable approach to consumption.

To gain inspiration from the shoes and shoe repair as it is, it is important to look at the shoe in hand as more than a finished product. This is why taking the seams apart and looking how it was created is an important part of the research. Cobblers are not just people who work with ready made shoes, they appreciate them broken just as much as repaired.



A PEEK INTO THE ART OF REPAIR

BEASLEY BROTHERS' REPAIR SHOP BY CARL CLERKIN

Beasley Brother's repair shop allows for an insight into the process of repairing. Only this time it has a different approach. Carl Clerkin has opted for an option that instills intrigue by having only a part of the workshop visible. The shop also has a little window where people are able to connect with the man behind the repairs himself and ask him questions through a little window while the person continues with his work.

This approach creates excitement for the final result, you can see glimpses of what the used furniture is turning into, but it doesn't give a well enough idea, where you could guess the ending of the product.

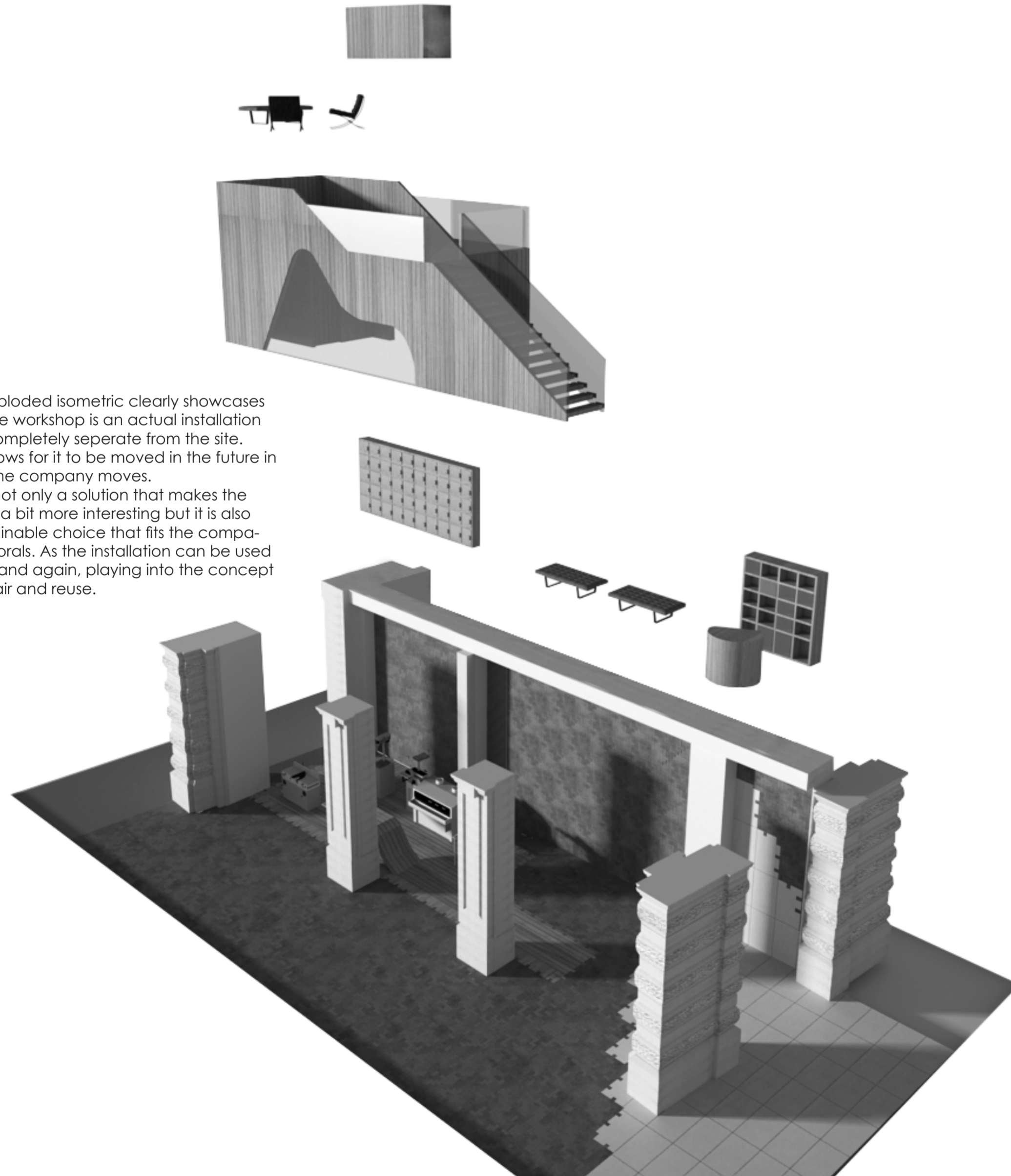
On the outside of the workshop all of the creations are displayed giving any new visitors an understanding of what this workshop might be about.

The shop itself is of simple design. A box that could easily be found at any place and would fit in no matter the interior. Although not intentional the exhibition promotes sustainability not only by promoting repair in an exciting way and using sustainable materials, but also through the flexibility of the workshop itself and chance to reuse.

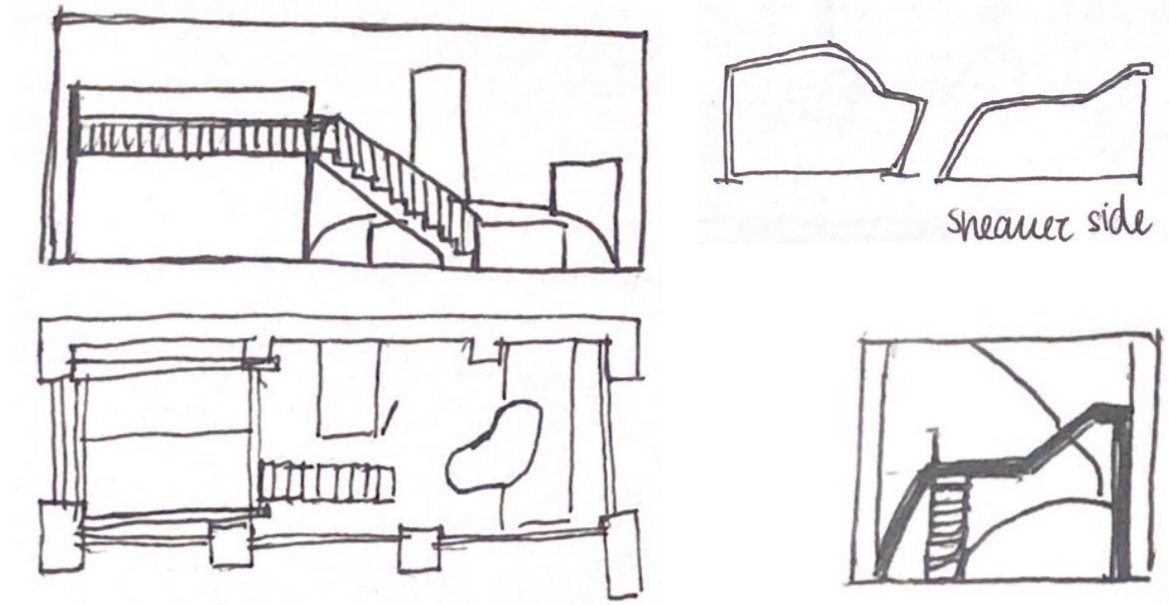
For the design of Shoe Spa not only the workshop itself can serve as an inspiration rather the whole exhibition. If the theme is repair why not look into how it can be portrayed through furniture and surrounding areas.



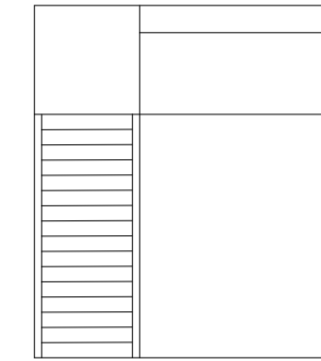
DESIGN DEVELOPMENT AND FLEXIBILITY



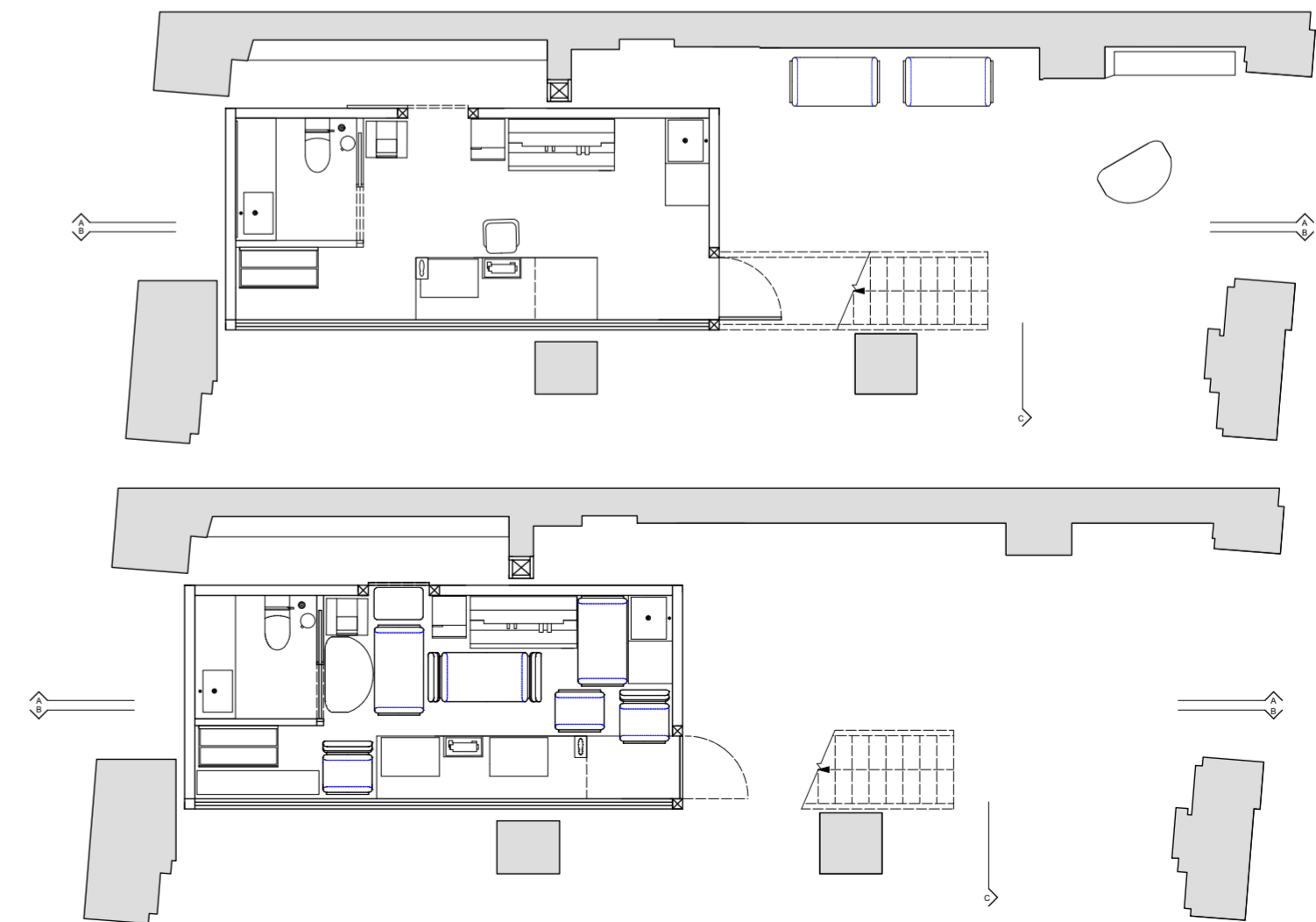
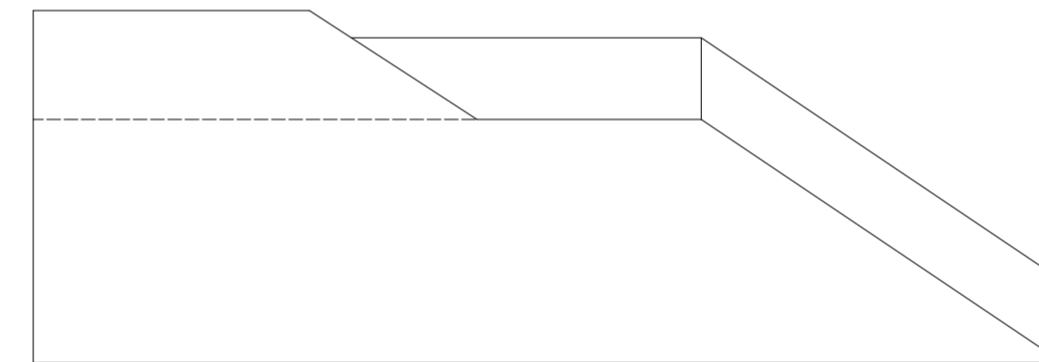
The exploded isometric clearly showcases that the workshop is an actual installation and completely separate from the site. This allows for it to be moved in the future in case the company moves. This is not only a solution that makes the space a bit more interesting but it is also a sustainable choice that fits the company's morals. As the installation can be used again and again, playing into the concept of repair and reuse.



One of the main goals of the design was to make sure it would be long lasting and would be a part of the whole concept of repair and reuse. This is why it was important to create an installation like structure that could be moved around from location to location in case the actual shop moves. Since the clients were a cobbler practice it was important to inspire from their work and values which is how looking intentionally at a taken apart shoe inspired the actual structure design.



To make the structure easier to move and also promote safety during closing hours all of the furniture and separate can be fit into the main workshop area. When in need of opening the shop or making the space feel specifically designed for the purpose of retail, the furniture can be brought back out.



DESIGN DEVELOPMENT AND MATERIALITY



PRODUCT	AVAILABLE FROM	DYMENSIONS	COLOUR
1. LEATHER	www.alphenberg.com Alphenberg Leather THE ORIGINAL	1200 x 900mm	Tundra Clay

Leather can be sustainable when sourced and produced responsibly. Sustainable leather takes into account various factors such as the use of byproducts from the meat industry, ensuring animal welfare standards, implementing environmentally friendly tanning processes, and promoting fair trade practices. Additionally, leather is known for its durability and longevity, which contributes to its sustainability by reducing the need for frequent replacements and minimizing waste in the long run.

2. OAK HARDWOOD FLOORING	www.kahrs.com	187 x 2420 x 15mm (largest available) 132 x 242 x 15 mm (custom)	oak dublin
--------------------------------	---------------	---	------------

Oak is considered sustainable due to its renewable nature and long lifespan. It grows relatively quickly compared to other slow-growing trees, allowing for responsible harvesting and regrowth, while its durability ensures that oak products have a prolonged lifespan, reducing the need for replacements and minimizing waste.

4. LEATHER	www.alphenberg.com	1200 x 900mm (largest available)	tundra kaiman off-black
------------	--------------------	-------------------------------------	----------------------------

To create a design that fully reflects the ideas that a sustainable practice like cobblers portray it's important to take into notice all of the aspects including sustainable materials. For this reason it was important to look into what kind of materials cobblers use in their day to day practice and how sustainable they are.

PRODUCT	AVAILABLE FROM	DYMENSIONS	COLOUR
3. CORK	www.amorim.com Amorim Cork Composites	635 x 950 mm (largest available)	tan

Cork is a sustainable material due to its renewable nature and the environmentally friendly process of its extraction. The bark of cork oak trees can be harvested every 9 to 12 years without harming the trees, allowing them to continue absorbing carbon dioxide and contributing to the ecosystem. Additionally, the harvesting process supports local economies and promotes the preservation of cork oak forests, which are important habitats for diverse flora and fauna.

5. HYACINTH NATURAL WEAVE	www.vetique.co.uk	1200 x 900mm (largest available)	natural
------------------------------	-------------------	-------------------------------------	---------

Natural hyacinth weave is sustainable due to its use of renewable and biodegradable materials. Hyacinth plants grow quickly and abundantly, allowing for a sustainable source of the weaving material. Additionally, the use of natural hyacinth promotes the reduction of synthetic materials and supports eco-friendly manufacturing practices, contributing to a more sustainable and environmentally conscious approach to design.

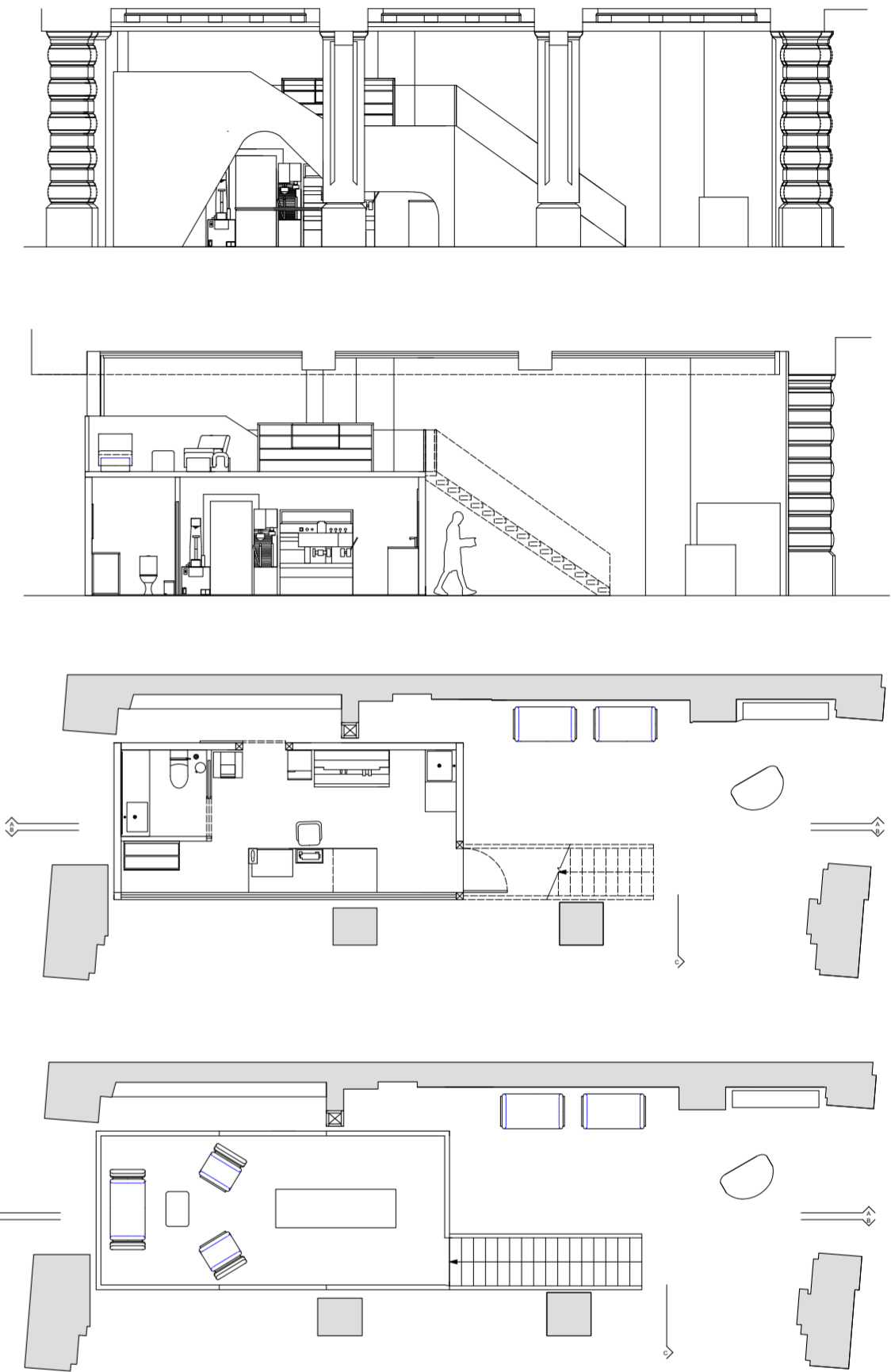
6. ORIENTAL BASALT (honed)	World's End Tiles	175 x 85mm	grey tiles
-------------------------------	-------------------	------------	------------

Basalt tile is sustainable due to its long lifespan and low environmental impact. It is a durable and naturally occurring material that requires minimal maintenance, reducing the need for frequent replacements and minimizing waste generation.





DESIGN RESOLUTION



Transformable design offers a sustainable solution by prioritizing adaptability and minimizing environmental impact. Its nature allows for easy disassembly, relocation, and reuse, reducing construction waste and promoting resource efficiency. The flexibility of the workshop enables it to respond to changing needs and locations, promoting long-term sustainability. By embracing portability, the design minimizes the environmental footprint of construction and contributes to a more sustainable and resilient built environment.