

# LOCAL THREADS

A self sustained incubator for fashion creatives in the local London and Lambeth area, this space is filled by the support of Lambeth council in collaboration with the social enterprise Fashion-Enter. Community-centric in character 'Local Threads' shall celebrate creativity and sustainability within the fashion industry. It shall facilitate the teaching of anything from corporate social responsibility for brand owners, to simple DIY up-cycling skills for the everyman. The one shared aim being a more sustainable world of fashion for all.

EVERY BRANDS NEEDS TO BE SUSTAINABLE TO THE CORE, THIS EDUCATION AND BUSINESS FLOOR PROVIDES ALL THE SUPPORT NEEDED IN THE REALM OF CORPORATE SOCIAL RESPONSIBILITY FOR THE EMERGING BRANDS IN THE INCUBATOR SCHEME.

MEMBERS MAKING SPACES ALLOW EVERY ASPECT OF THE DESIGNING MAKING AND SELLING PROCESS TO TAKE PLACE ON ONE SITE, LOWERING THE CARBON FOOT PRINT OF EACH GARMENT TO OTHERWISE UNOBTAINABLE LEVELS.

PRODUCTION WORKSHOPS ARE POWERED BY ON SITE RENEWABLE AND SUSTAINABLE ENERGY SOURCES. MATERIALS FOR MAKING ARE SUPPLIED BY DONATIONS, AND WASTE FROM NEARBY FASHION-ENTER FACTORIES.

MEET WITH LIKE MINDED PEOPLE AND BOND WITH A SHARED SENSE OF OPTIMISM. LEARN ABOUT THE LIKES OF CIRCULAR ECONOMY AND FAST FASHION IN THE PRESENTATION SPACE.

DONATE UNWANTED CLOTHES, LEARN HOW TO UP-CYCLE GARMENTS AND PURCHASE CLOTHES FROM THE INCUBATOR MEMBERS SUSTAINABLE BRANDS.





# SUSTAINABILITY BASED ISSUES TACKLED WITHIN THIS SPACE

## ADAPTIVE REUSE



Giving new life to the old - Considering the use of the space is centred around crafting sustainable clothing and up-cycling clothes, it is rather fitting that the site is a Grade II listed building, an old fire station situated on Waterloo road, Waterloo London. Whilst this means there are restrictions in terms of what can be altered and added within the space reuse of old sites such as this is key in building a more sustainable future.

GRADE II LISTED BUILDING  
List Entry Number: 1249651  
Date first listed: 05-Mar-1986

## FAST FASHION



Fast fashion is an extremely pressing issue in the world today, with both consumers and brands pushing for more to be done to reduce the many negative impacts of the mass produced disposable culture that currently exists.  
-UK consumers ditch more than a million tonnes of clothing every year.  
-The value of clothing that goes into land fill each year is £140m  
- 30% in an average wardrobe has not been worn in a year  
Source: Wrap UK  
<https://www.bbc.co.uk/news/magazine-30227025>

There is also a lot of data which highlights that people have engaged a lot more in up-cycling their own clothes, particularly during and since the covid 19 pandemic. A 65% increase in sales on Depop market place was seen since 2019, this is were 2nd hand and up-cycled clothes are sold. This space directly feeds into this growing interest.

## CORPORATE SOCIAL RESPONSIBILITY



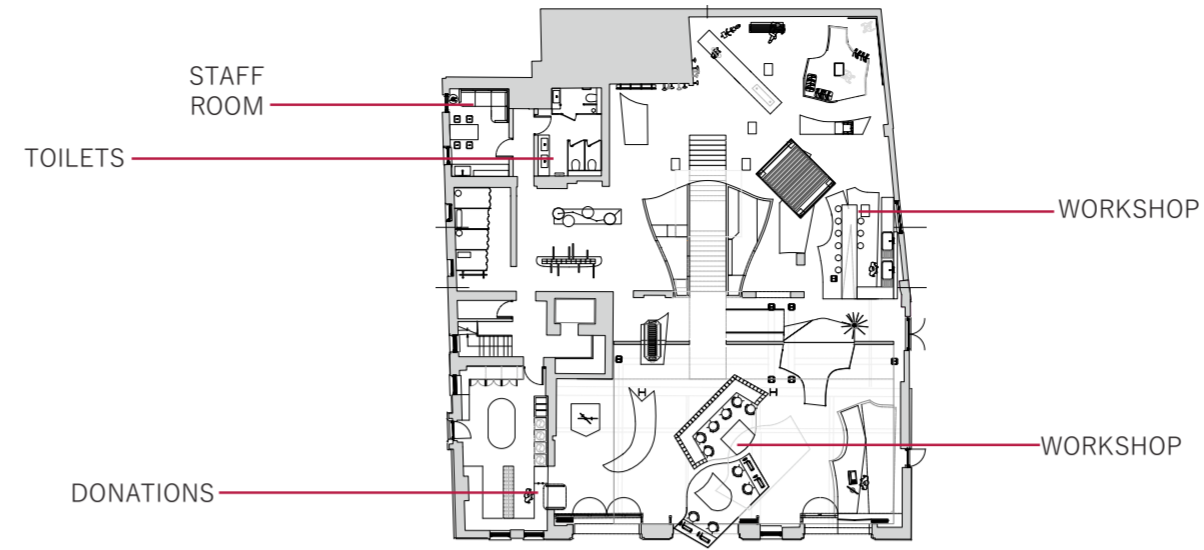
Corporate social responsibility is a business model by which companies make a concerted effort to operate in ways that enhance, rather than degrade society and the environment. The public are demanding higher ethical standards of fashion brands today more than ever. This space strives to set itself apart from the typical high-street store, it achieves this by creating a community and educating those who engage with the space. This means there is a shared sense of optimism as everyone interacts positively towards a more sustainable world of fashion, from those at the top behind the business models, to the every-man learning some up-cycle skills.

## SUPPORTING LOCALITY

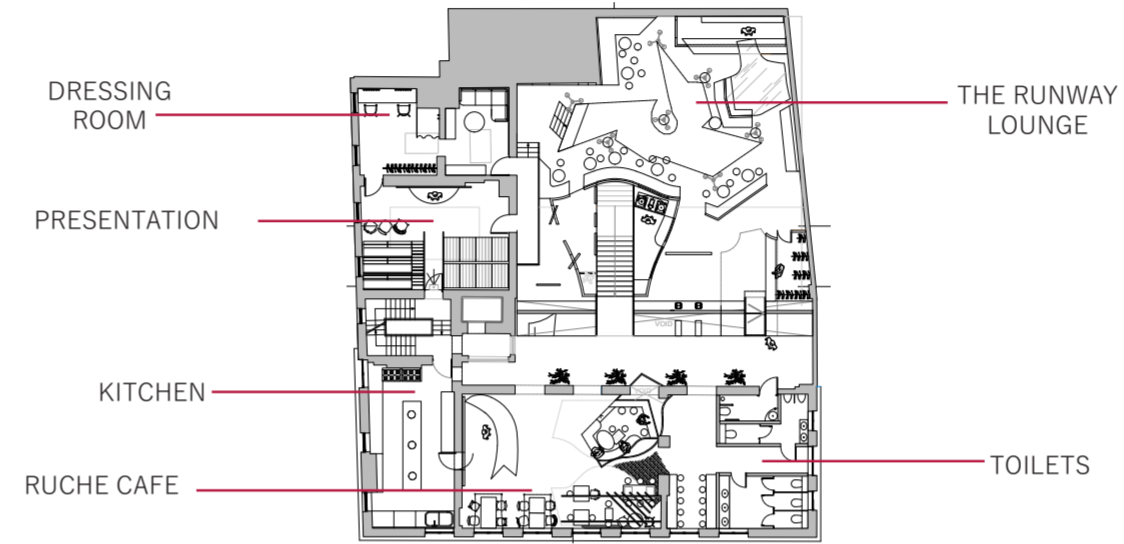


This space is funded by Lambeth council meaning there is a drive to ensure resources, and those who engage with the space are local, this reduces the carbon footprint of Local threads. In terms of building materials nearby construction sites can provide some waste materials, existing materials shall be celebrated and reused, similar themes can be seen within the fabrics needed in the making spaces as the social enterprise Fashion enter run multiple clothing factories locally and shall be providing waste fabric that can be used within this space.

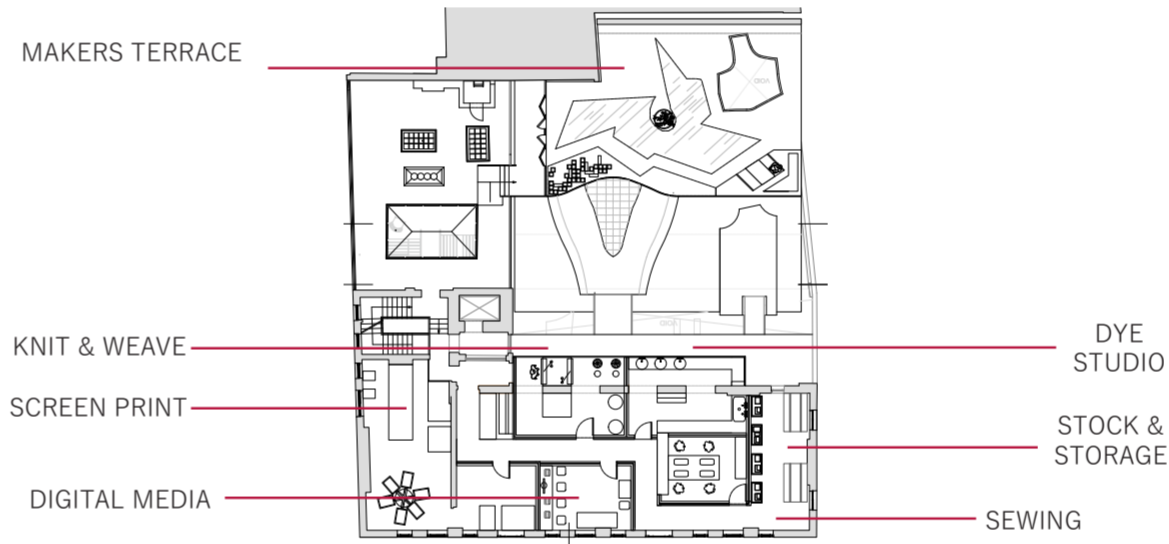
## RETAIL & EVERY-MAN WORKSHOPS



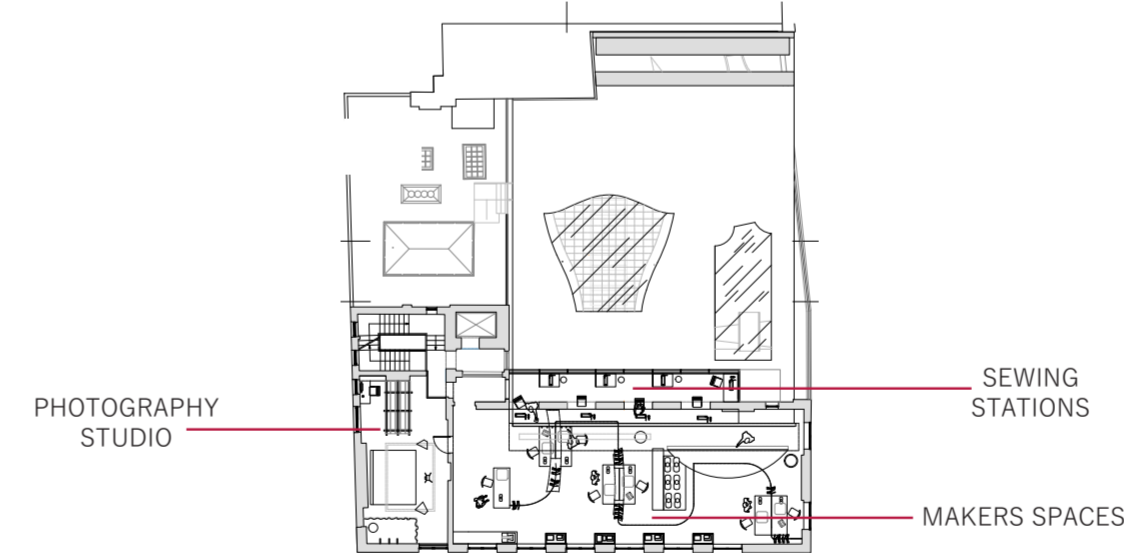
## HOSPITALITY, CAFE RUCHE AND THE RUNWAY LOUNGE



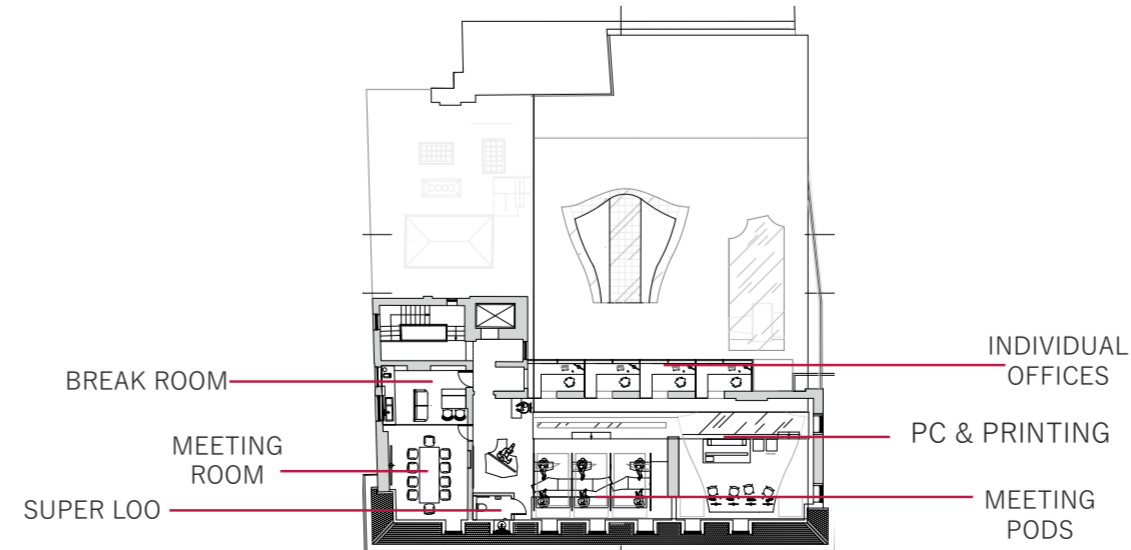
## MEMBERS WORKSHOPS



## MAKERS SPACES



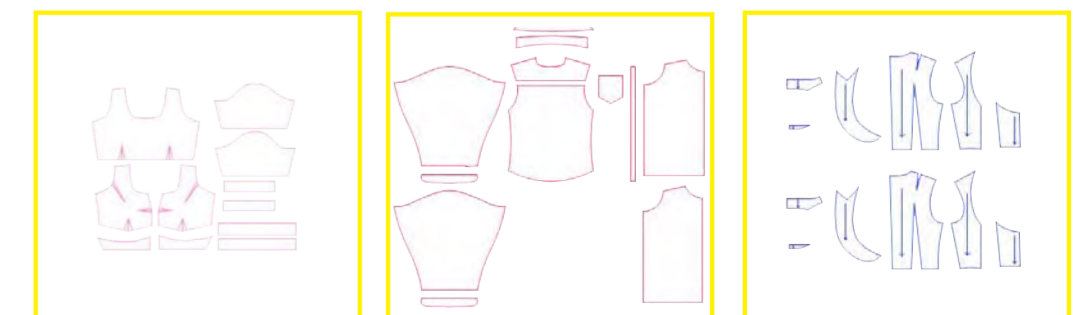
## BUSINESS OFFICES



**EVERYTHING NEEDED ALL IN ONE SPACE.**

## CONSCIOUS PATTERN CUTTING - DRAWING ATTENTION TO THE USED AND UNUSED

Here you can see the pattern shapes that have been used to create inhabitable and usable spaces within the design. These are cut from a seamless steam bent timber form that flows through the space alike fabric, the various ways these pattern shapes are manipulated, extruded and used within the space, as well as the voids they leave behind shall conjure thoughts of the used and unused, and thereby the beauty in the waste produced in the garment making process. The aim being to encourage makers to see how offcuts can be re-imagined and used themselves.





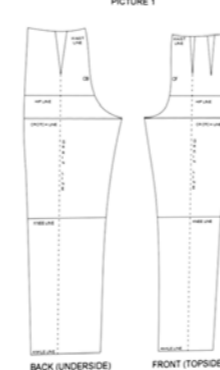
# UTILISING WASTE MATERIALS



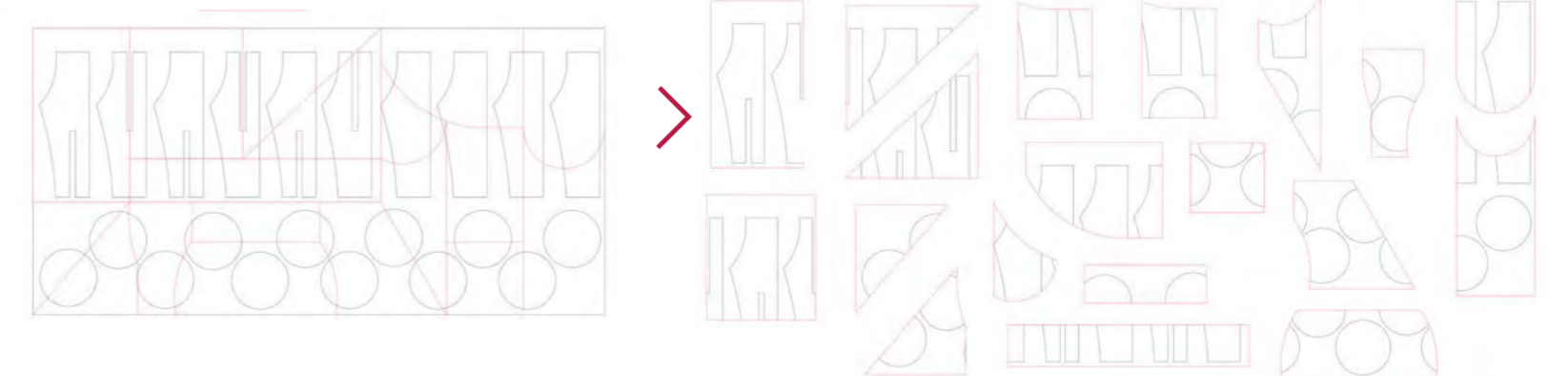
One key example of how waste materials have been utilised within this space can be seen in the facade design. As previously mentioned this site is Grade II listed therefore no direct contact or alterations of the existing brickwork etc. can be made. Therefore a light scaffold and metal mesh design has been created. However it is what has been used to embellish the mesh that is key. To understand this you must first look to the Ruche cafe on the 1st floor, where a bespoke stool design can be found (see to the right). Continuing the theme of pattern cutting the stool is created from ply wood interlocking shapes, inspired by the patterns needed for making trousers. These shapes shall be laser cut from plywood sheets, and due to their irregular shape shall leave remnants of wood unused. It is these wood sections that shall be further cut up, painted and applied to the mesh facade. This design feature truly embodies how something once regarded as disposable waste can actually be re-imagined to create something wonderful in its own right, the same shall be done with the fabric pattern cutting within the space.



THE BASIC TROUSER BLOCKS  
PICTURE 1



CUTTING PATTERN FORMS NEEDED LAID OUT ON SHEET MATERIAL





# COMMUNITY EDUCATION



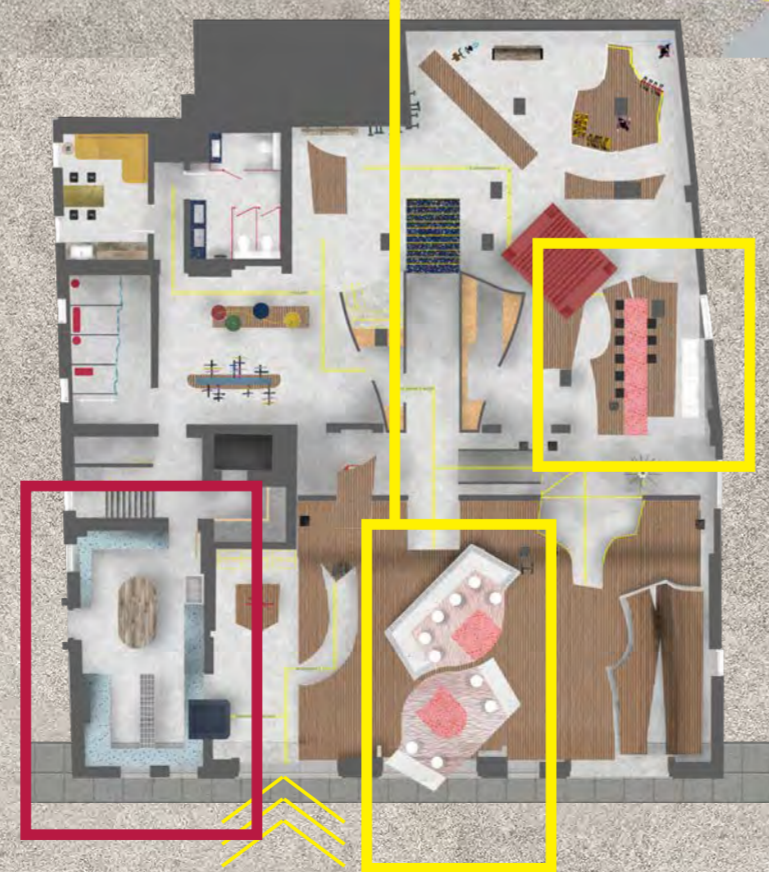
## DONATION POINT AND UP-CYCLE WORKSHOPS

The Ground floor is home to retail, where customers can buy clothing ranges up-cycled by the local threads members. There is also a donation point where anyone can drop off unwanted clothes or fabrics, these materials shall then be fed into the workshops and making spaces throughout Local Threads for them to be re-imagined.

The most interactive spaces on the ground floor, (highlighted by a yellow boxes on the plan to the right), are the workshops. The workshops are immersed within the retail displays and allow the every-man to become inspired but the art of up-cycling.

There are set classes that shall take place where DIY and at home skills can be learnt, 'workshop one' at the front of the store focuses on sewing and embroidery techniques, where 'workshop two' dives into dye and print methods to bring old clothing to life.

These classes shall allow like-minded people to meet and a shared sense of optimism and contribution to a more sustainable future to be felt.



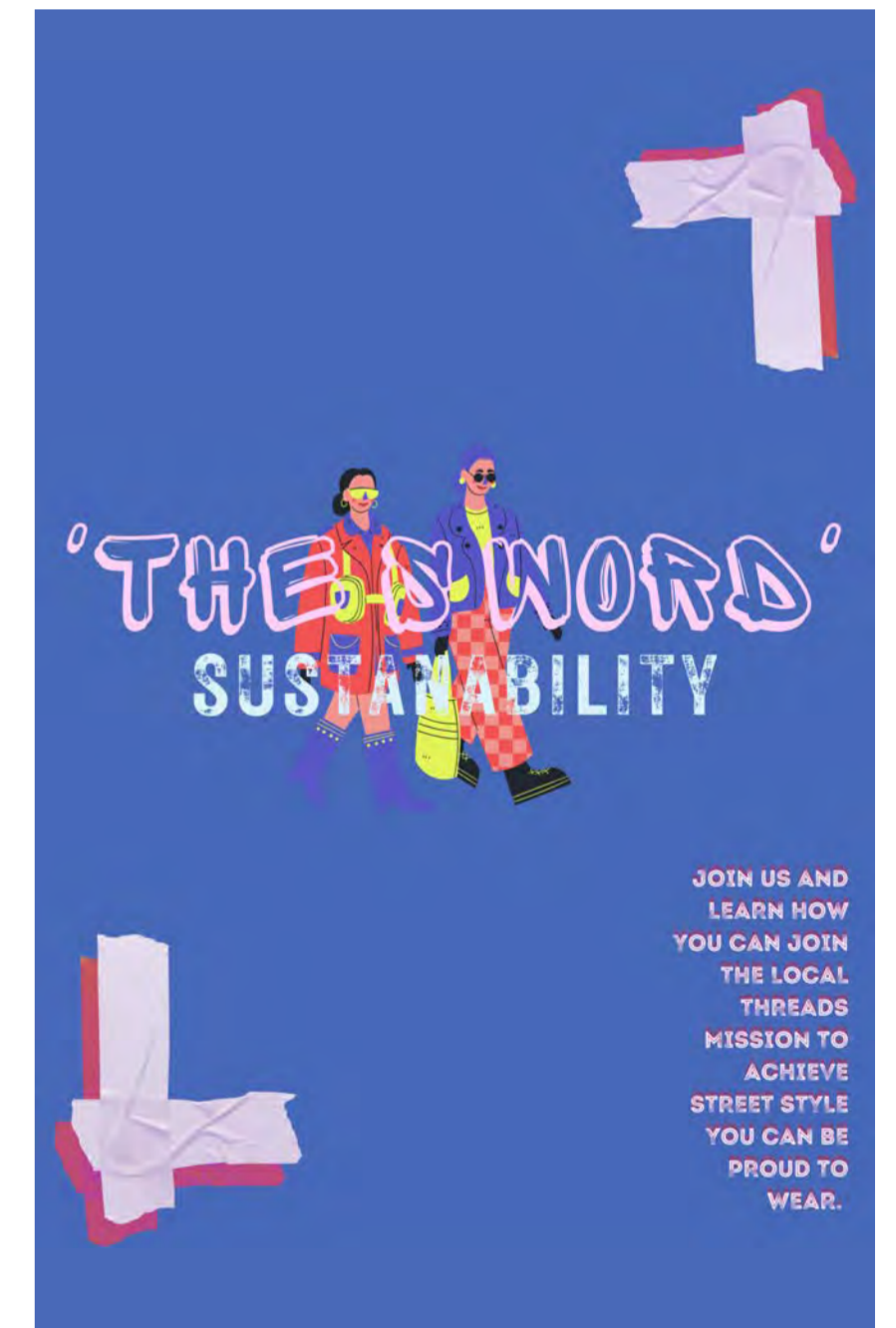
SECTION CC



Above you can see a section through The Runway Lounge and presentation space on the 1st floor.

The runway lounge hosts exhibition style displays where new sustainable clothing ranges can be viewed whilst the public enjoy a late night drink, there is also a central pop-up runway where the members can showcase their work at various events. This engages the public with sustainable fashion providing a dual typology space to capture attention. The Runway Lounge shall prove to customers that high end fashionable clothing doesn't need to come at a cost to the planet.

Secondly, the presentation space (highlighted by a red box), here events will be held, open to Local Threads members and the public. Talks and classes shall be centred upon educating people on sustainability, how to help, and arming them with knowledge. To the right you can see a poster that can be placed around the local area, in Waterloo station for example, publicising such events.

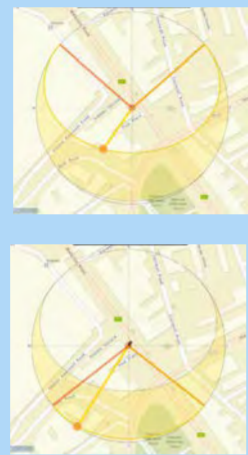




# INSIDE AND OUT SPECIFICATION AND RESOURCES

## SELF SUSTAINED:

Of-course the vast majority of the equipment needed in the workshops require electricity, therefore in order for this space to practice what it preaches, a sustainable source of power is needed. Considering the large expanse of roof and perfect location to catch the mid day sun on the rear of the building ( as depicted in the solar graphics to the right ) solar panels are a great choice.



- 1 Rain water collection for dye labs and screen printing shall also be used to offset the negative impact here both environmentally and economically.
- 2 Solar panels



Inside local Threads, all of the materials and furniture specified are sustainable, either reclaimed, renewable, recycled or recyclable. This is of course great environmentally and also financially as money can be saved through 2nd hand resourcing. The original materials in the space have also been celebrated largely and no covered over showing respect and balance between the new and old. Here you can see all the materials used for the makers spaces



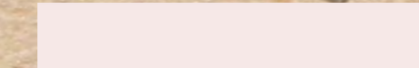
**Curved Timber Battens**  
Available from: sculptform  
Steam bent Timber Click-on Battens, concave and convex available with opposing groove sides.  
Dimensions :max single length 1800mm, width 60mm, depth 19mm. Standard readli lengths are between 300-600mm, max angle 90 degrees  
Wood type: American Oak with a olive rubio finish.  
Sustainability: Highly sustainable when responsibly sourced, American oak is growing 100.7 million m3 per year while the harvest is 52 million m3 per year. PEFC Controlled source material to ensure the best practices are met in terms of sustainability.



**Concrete-** as an existing material only, floors and ceilings stripped back.



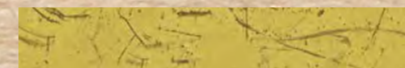
**Re:mix Sunlight**  
Available from: Little Greene  
Sustainability: Hand-crafted in the UK. Made using recycled paint. Re:mix sees damaged and unwanted stock expertly blended and reformulated to create a beautiful matt finish for interior walls and ceilings.



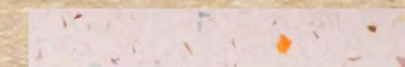
**Chemise (139) Paint**  
Available from: Little Greene  
Finish: Absolute Matt Emulsion  
Sustainability : Hand-crafted in the UK. Virtually zero VOCs. Made in association with the National Trust.



**Foresso Timber terrazzo**  
Thulite Oak  
£990.00  
per dimension of 3050 x 750 x 24mm  
Uses: Residential or commercial; Foresso is suitable for all interior surfaces.  
Sustainability: 6mm Foresso top layer on and 18mm plywood substrate. Handmade in the UK. Durable and practical for numerous interior applications.  
Made using minimum 65% waste material sourced within Britain.  
Low Carbon, designed to minimise ecological damage with short supply chains, high recycled content, and locally generated power.



**Container panel offcuts**  
Waste steel from shipping containers can be used and up-cycled for many interior purposes  
Available from : Budget shipping containers UK  
Dimensions: of-cut shapes/sizes are varied, elements could be welded together.  
Sustainability: is a recycled source and is able to be recycled after use.



**Flek Frosty Pink**  
Available from: 3 form  
Dimensions: 48" x 120"  
Gauge: 1/2"  
Sustainability:  
An award-winning, sustainable product, Flek features a design made from recycled Varia samples displayed in a beautiful terrazzo-like pattern. Product Declarations and 3form Initiatives that advance sustainability goals and help projects qualify for LEED v4i, Living Building Challenge, WELL Building Certification, including Optimized EPDs, EPDs, Declare Labels, Greenguard Gold and more.



**Mous Hellgrian, Medium**  
Up-cycled light green moss in medium coverage on a translucent self-adhesive backing.  
Available from: Organoid  
Thickness: 0,5 mm  
Info: Can be applied directly on rough surfaces e.g. plasterboard  
Sustainability: up cycled moss content, the biophilic design of the surfaces increases well-being and reduces stress



**Medium-grained agglomerated cork board**  
7x640x950mm  
Unit Price for 1 pcs. £ 44.79  
Available from: corkstore24.co.uk  
Sustainability: Made from 100% natural cork.  
Sustainability: Natural cork is a renewable resource that can be harvested without harming the tree, making it an eco-friendly choice.  
Natural cork is a non-toxic material, making it a safe and healthy choice. Natural cork is a renewable resource that can be recycled and reused, making it a sustainable choice for the environment.



**Lightly™ chair**  
Price: \$329 per chair  
Colour: Sunshine  
Sustainability: frame made from a plant-based polymer. (made using the castor bean plant which soaks up carbon from the atmosphere as it grows.) This incredible material makes up 74% of Lightly's weight.  
Our high-tech manufacturing facility uses 82% renewable electricity.



**1960's Original Mulca French stools**  
Available from: 1st Dibs  
Material and colour: metal birch, yellow.  
Dimensions: H 590, W 390, D390mm



**FUZL Chair Pollen [YELLOW]**  
£260.00 GBP  
Sustainability: VOC free, food safe and solvent free. We source our wood exclusively from responsibly managed forests in Northern Europe.  
Available from: www.fuzl.co



**Large yellow no.14 front door.**  
146241634  
Dimensions: HWD 2069 x 880 x 45mm  
Price: £300  
Available from : Authentic Reclamation



**Hay - Colour Crate Basket recycled**  
Available from HUH store  
Colours: Dusky pink, sunshine yellow  
Price £10.92  
H: 14 cm, D: 26.5 cm, L34.5 cm to W26.5 x L34.5 x H14 cm.  
Material: 100% recycled post consumer plastic



**A 'Frame' Trestle Desk / Table**  
Sustainability: local sourced sustainable wood including salvaged wood whilst working with local artisan manufacturers to keep the local economy alive.  
Dimensions: Bespoke  
Colour: Mustard Yellow  
Price: from £575.00

- RECYCLED - RECYCLABLE- RECLAIMED- 2ND HAND -