

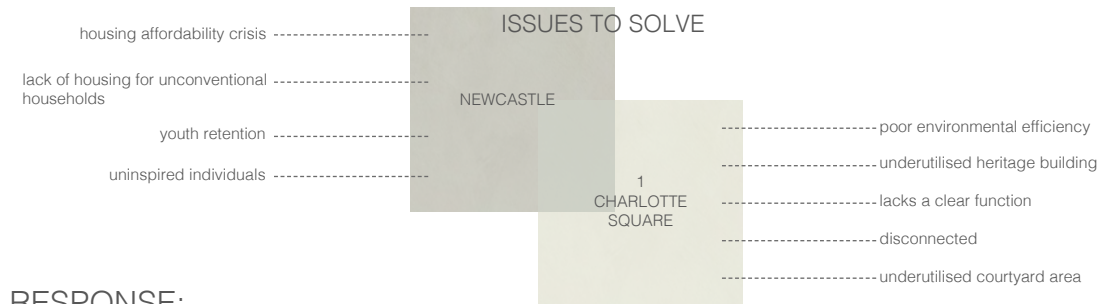
Elevated Threads

Weaving Vertical Living for Young Adults

BRIEF:

The project Design an adaptive reuse intervention for 1 Charlotte Square, Newcastle, that responds to themes of affordability, unconventional households, and spatial anthropology. The proposal should address the needs of diverse household types—while incorporating community-oriented spaces.

The design should reflect the buildings heritage while addressing contemporary needs. Use creative reuse, design for disassembly, and material honesty to breathe new life into the building and support a resilient, community-focused future.



RESPONSE:

This project reimagines affordable living for young adults through a vertically oriented, flexible design inspired by elevated threads. Suspended elements such as hanging tables, modular platforms, and textile partitions stitch together adaptable living units and shared spaces that promote movement, autonomy, and community. A woven spatial layout balances privacy with collaboration, while the adjacent Coach House becomes a vibrant venue for events and cultural exchange. The design integrates sustainable strategies, prioritising energy efficiency, material honesty, and low-impact construction methods. With varied pricing and a socially driven ethos, the proposal offers an inclusive, innovative living experience that bridges the site's heritage with contemporary environmental and social needs.



Young Couples Tom + Elsie

A couple visiting from London with a shared interest in architecture and design, are seeking short-term accommodation in Newcastle. The studio pods provide an innovative and cost-effective living solution, offering a flexible, alternative lifestyle.

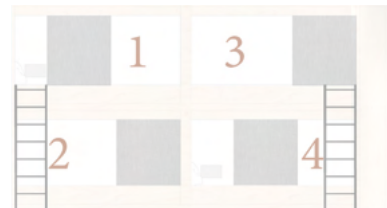
Graduates Mark

Recently graduated from Newcastle University, Mark is seeking affordable housing that fosters a sense of community with others in similar life stages. This residential space offers a sociable environment near the city centre, providing an ideal transition from student living to independent adulthood.

Creatives Alex

Alex moved to Newcastle to pursue his music career. The residential space at Charlotte Square offers a creative living environment with a collaborative workspace. With access to the Coach House for performances and events, the environment supports both his lifestyle and artistic ambitions.

bed pods - communal residency

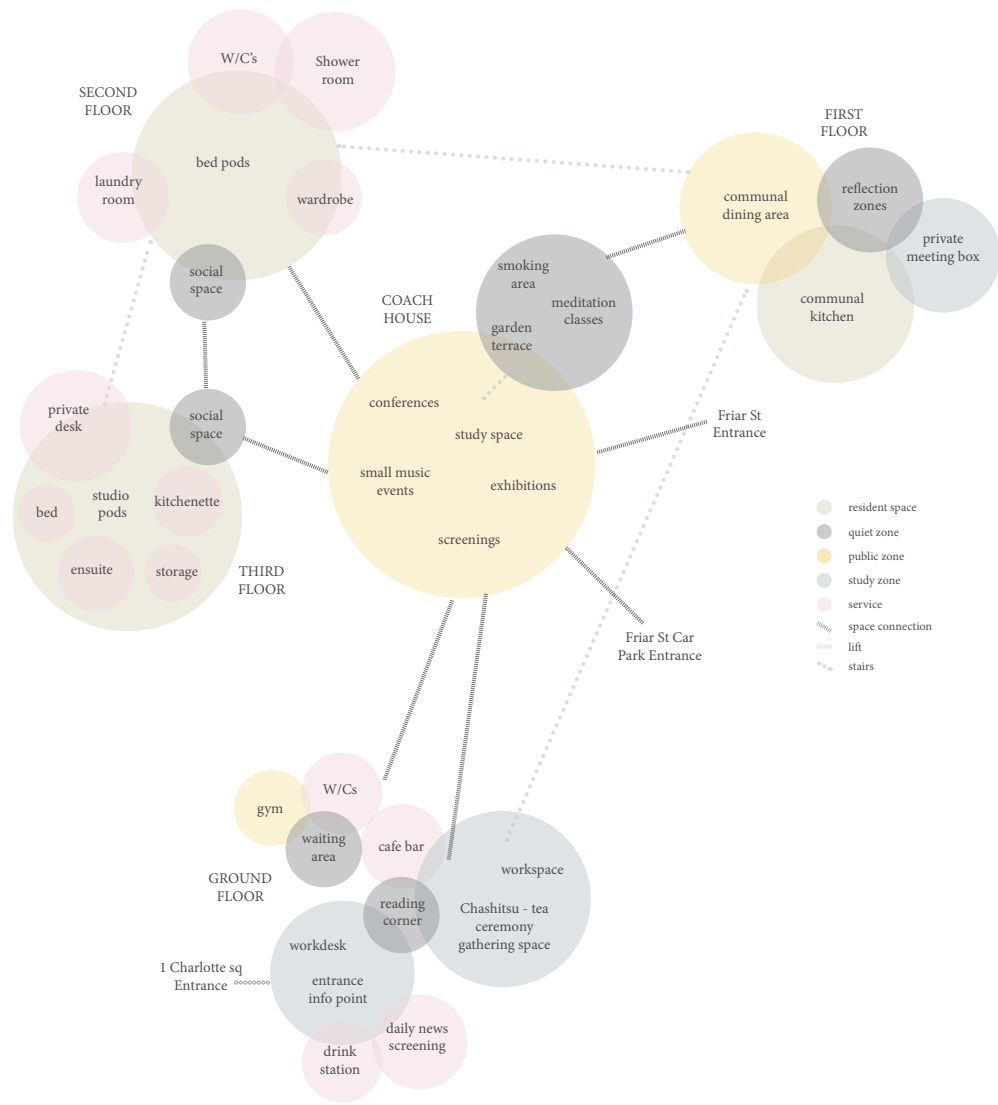


private sleeping quarters
shared kitchen and bathroom facilities
encourages social interaction and spatial efficiency
< 28people

studio pods - private residency



Accommodates 1-2 people
fold-down guest beds
retractable platform bed that can rise above studio walls
< 21people



UNCONVENTIONAL



Supplier: Bennett's Timber (Yorkshire, FSC & PEFC-certified)

- supporting regional economies
- durable
- easy to construct and disassemble
- renewable
- efficient in manufacturing

Supplier: Flooring by Nature (UK based)

- dampen noise levels
- improves micro-climate
- cork is made from waste wood
- recyclable
- eco-friendly

birch plywood
hardwood

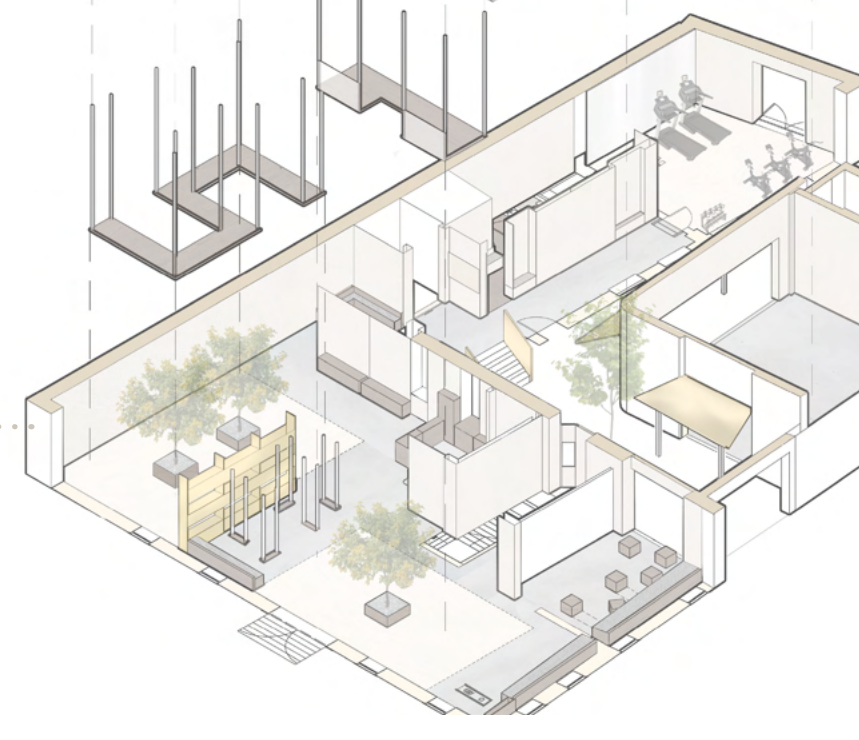
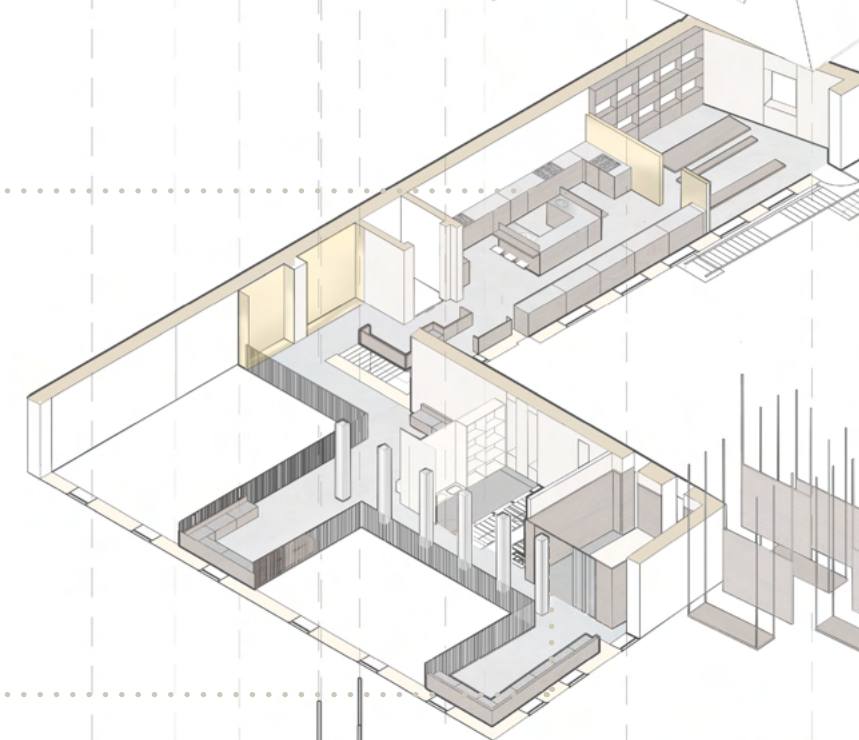
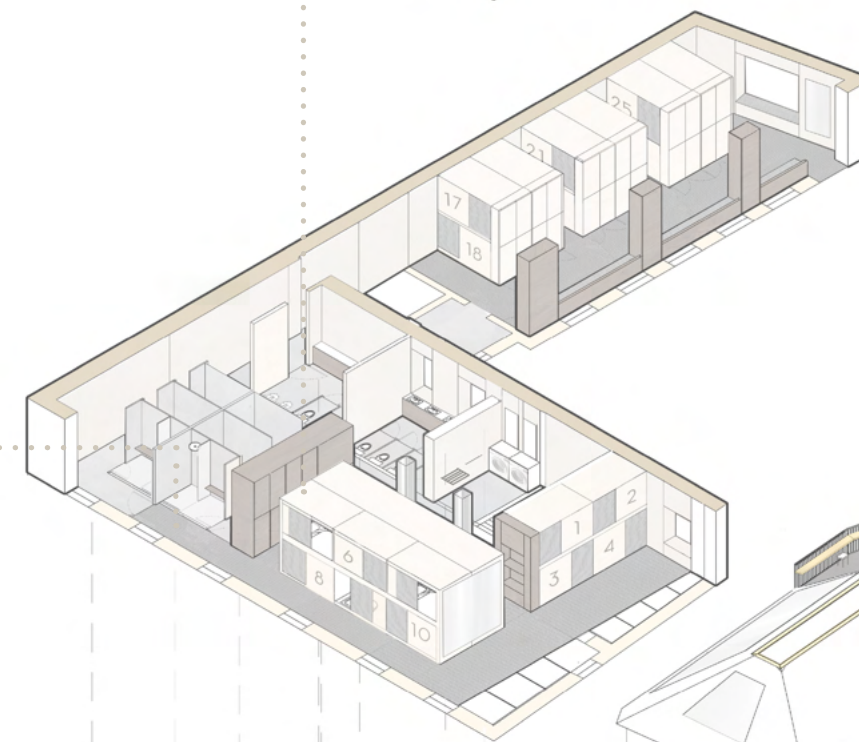
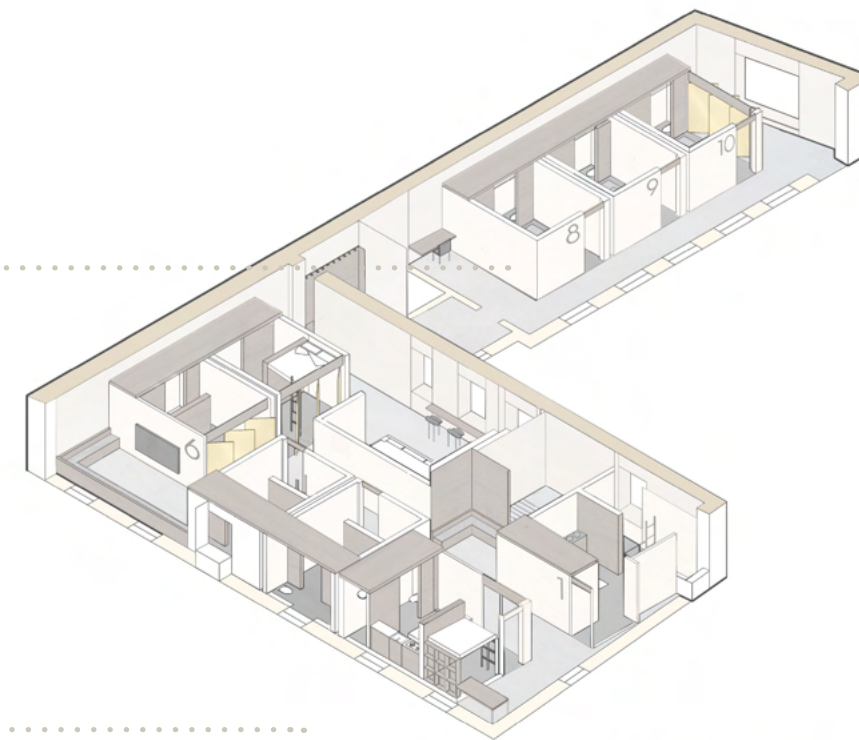
recycled cork

recycled rubber

dark oak timber
hardwood

troldekt acoustic
panelling

existing brick walls



THIRD FLOOR:

MICRO-LIVING STUDIO PODS

- modular and repeated structure
- compact living design
- adaptive privacy through wall openings
- flexible occupancy (accommodate 1-3 people)
- sustainable material palette
- acoustic independence

SECOND FLOOR:

COMMUNAL LIVING

- Minimalist Bed Pods with Efficient Footprint
- Shared Washroom Facilities
- Socially Sustainable Layout
- Customisable LED Lighting in Pods
- Integrated Laundry Room with Air-Drying Racks
- Natural & Soft Material Palette

FIRST FLOOR:

COMMUNAL LIVING

- resident kitchen
- communal dining area
- private seating space
- outdoor access

CONNECTED LEVELS

- Double-Height Volumes
- Passive Oversight from Upper Levels
- Strategic Balcony Viewpoints
- Semi-Private Balcony Retreats
- Enhanced Air Circulation
- Optimised Natural Lighting

PRIVATE POD

- clear insertion into existing building
- self-contained
- multifunctional space (meetings, study...)
- sustainable materials

GROUND FLOOR:

GYM

- promotes a healthy lifestyle
- free access to residents
- sustainable materials
- rehomed exercise equipment

KNOWLEDGE HUB

- Informs and educates residents and visitors by broadcasting curated, thought-provoking news and current affairs content

STUDY SPACE

- open to public
- communal design
- multifunctional design
- collaborative workspace
- appropriate for residence

COACH HOUSE:

COURTYARD

- Perforated courtyard edges allow seamless indoor-outdoor flow
- biodiversity through added vegetation
- rain harvest system

EVENT SPACE

- opportunity for residents to showcase their work/passions
- community engagement
- social opportunity
- flexible/ adaptable space

ROOFTOP TERRACE

- expands outdoor space on site
- multifunctional space (meditation/ events)
- connected to 1 charlotte sq building

INTERACTIVE



Supplier: The Rubber Floor Co.

- post-industrial rubber
- low maintenance
- sound-absorbant
- slip resistant
- fire rated
- durable

Supplier: Bennett's Timber (Yorkshire, FSC & PEFC-certified)

- supporting regional economies
- durable
- easy to construct and disassemble
- renewable
- efficient in manufacturing

MULTI-FUNCTIONAL



Supplier: Troldekt UK

- fire resistant: "Class O"
- acoustic qualities
- cradle-to-cradle certified
- improves indoor air quality
- long lifespan
- low maintenance

Supplier: NE repointing services

- preserving the existing redbrick reduces the need for more materials
- brick repairs are sourced locally
- heritage value
- embodied carbon reduction

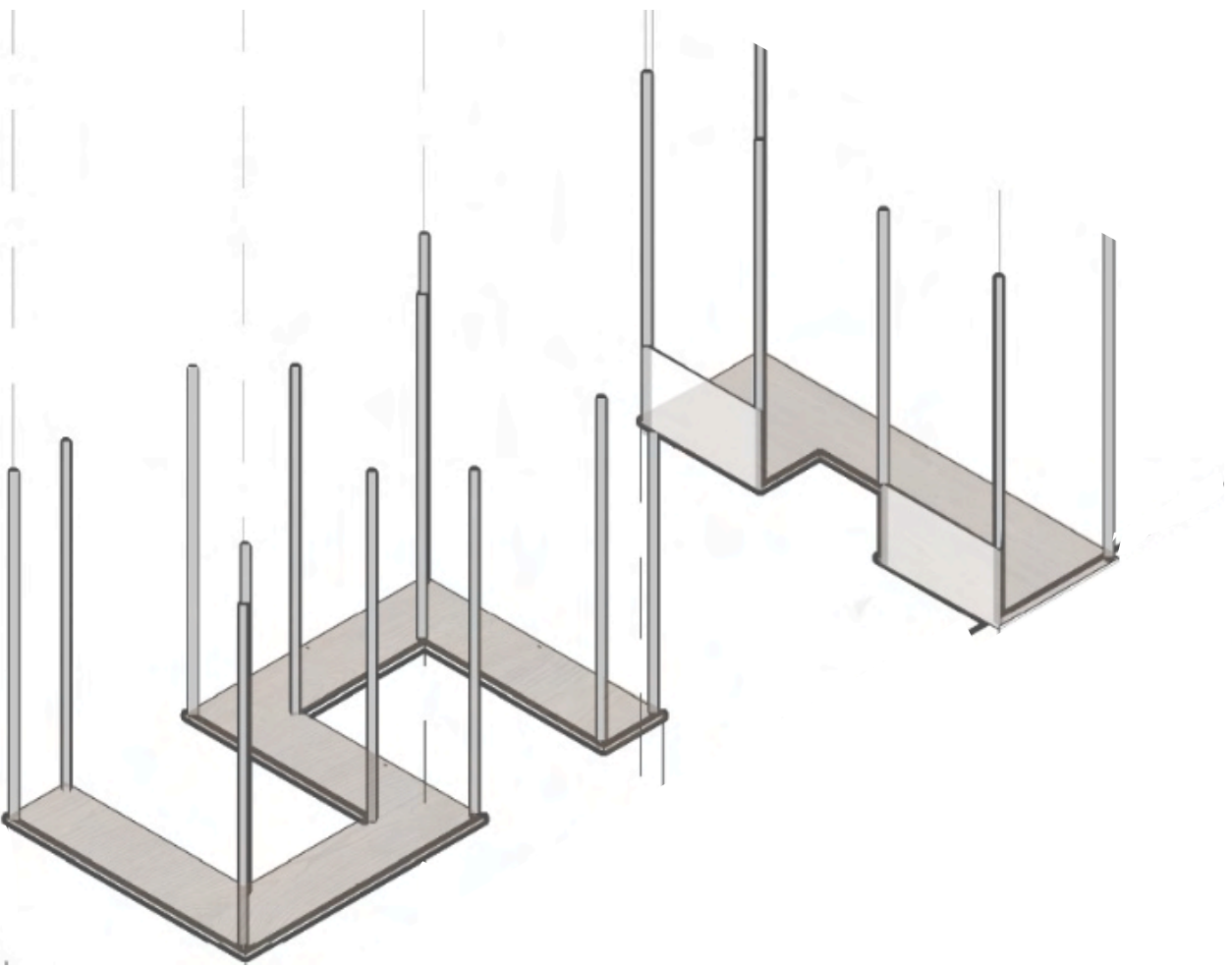
REDUCING THRESHOLD ANXIETY



Incorporating multiple entry points into the coach house helps foster a more welcoming and inclusive atmosphere. By avoiding a singular 'in-or-out' access route, visitors are given a greater sense of freedom and ease when entering or exiting. This design choice enhances the accessibility and openness of the event space, ultimately contributing to a more successful and engaging public environment.



Rainwater is collected and directed through a piping system into a storage tank, where it is then pumped to irrigate the indoor trees.

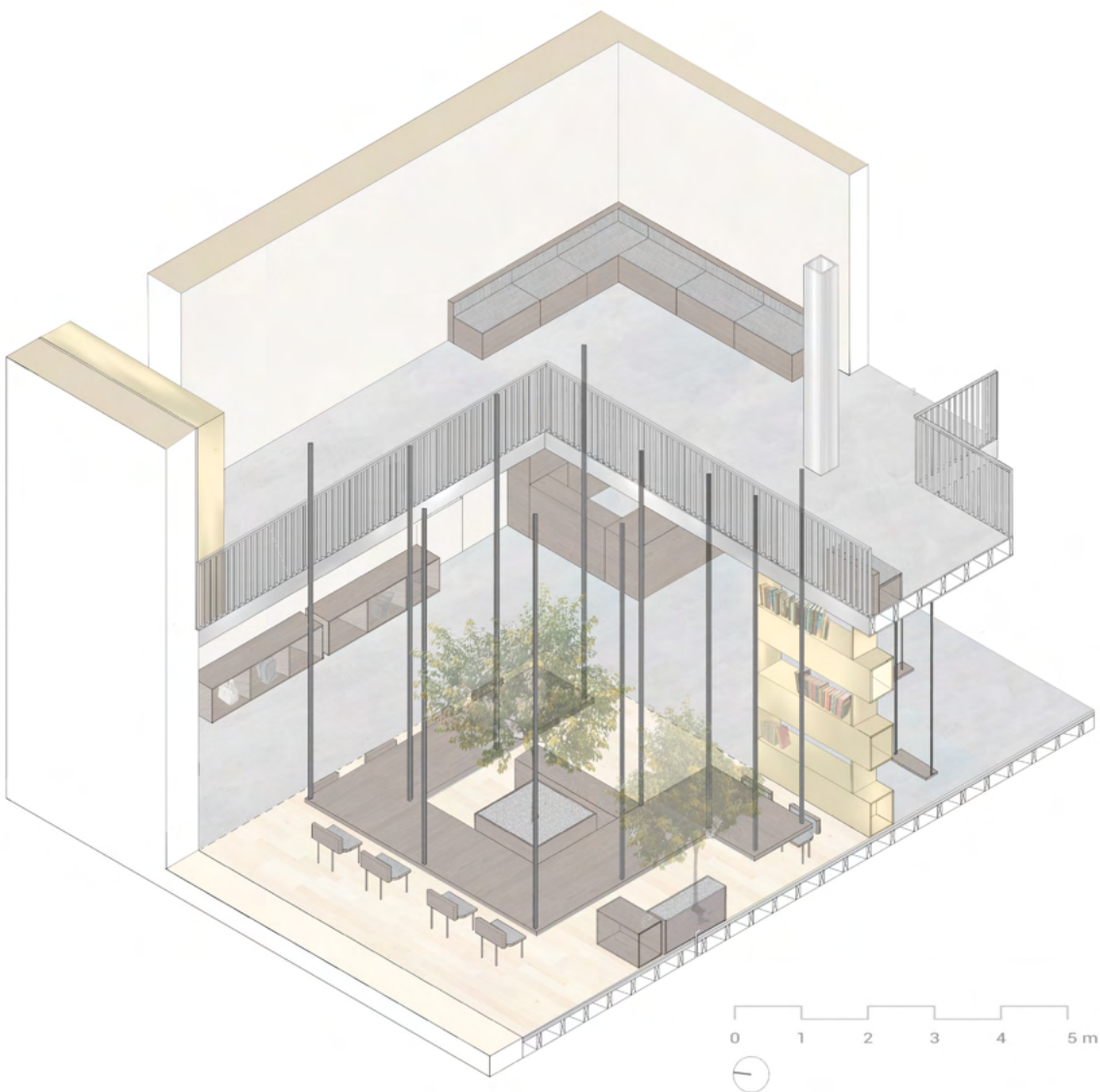


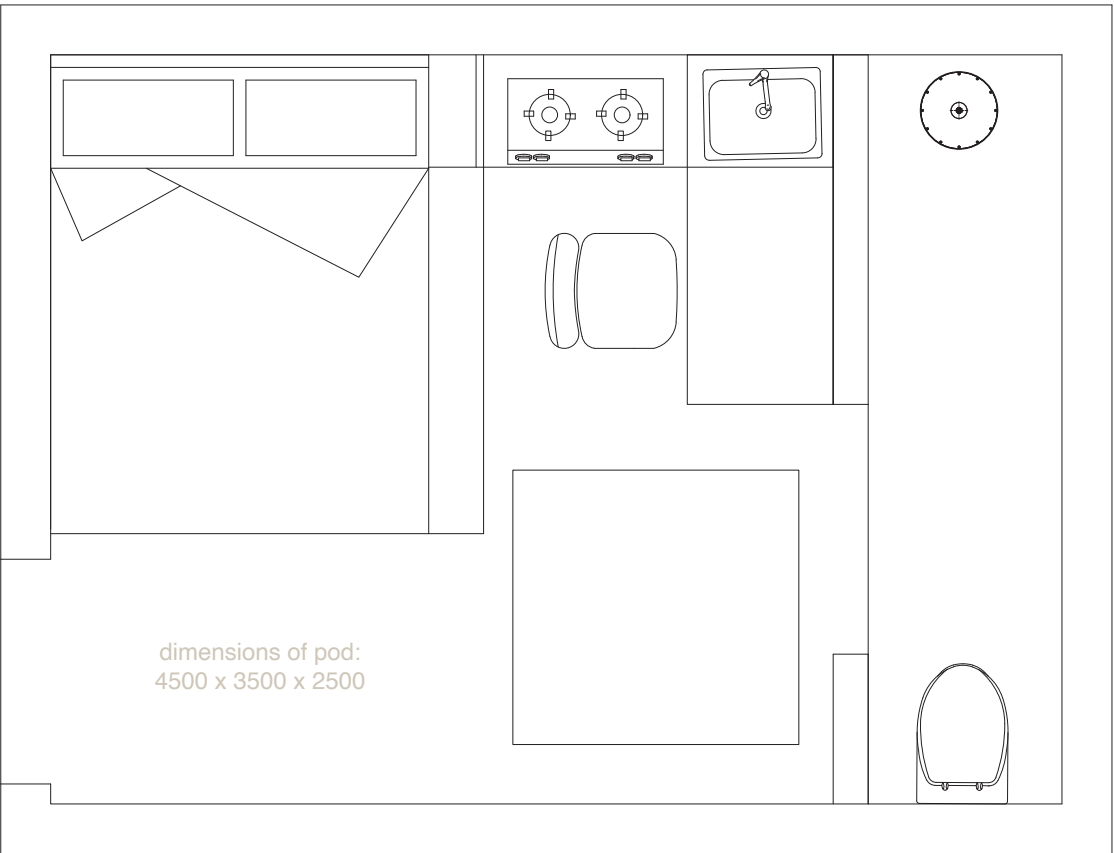
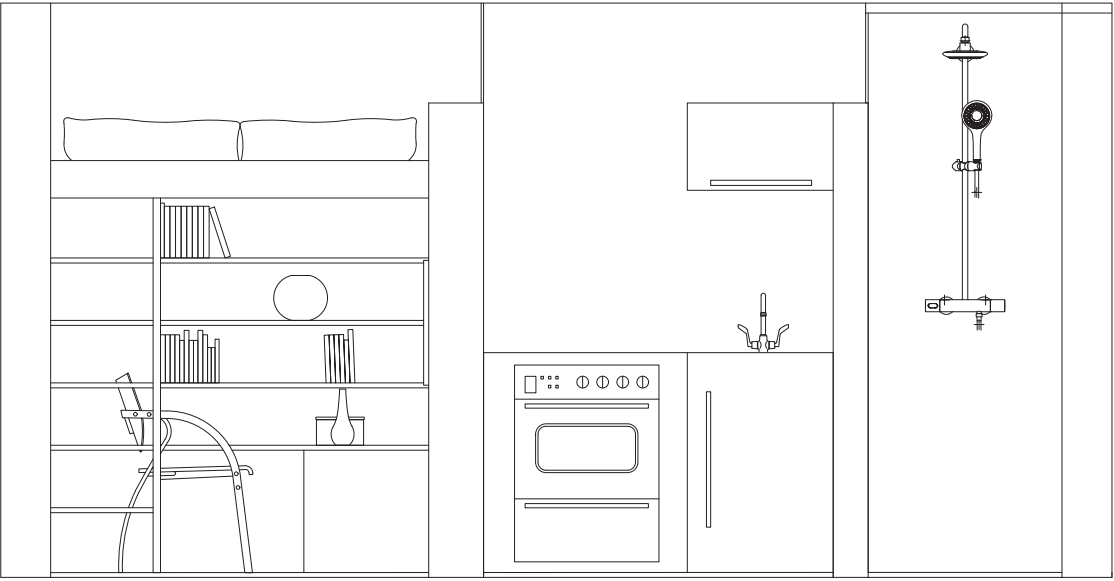
SUSPENDED TABLES

The design embraces spatial flexibility by introducing multifunctional rooms equipped with adaptable tables. These tables can be lowered to create practical workspaces or raised to facilitate cultural activities such as chashitsu. When elevated, they transform into sculptural ceiling features, revealing mirrored undersides framed with soft LED strip lighting. Suspended on sleek rods, the tables can be effortlessly lifted to the ceiling of the first floor, seamlessly blending functionality with aesthetic impact.



A multifunctional, open-plan space designed for adaptable use — from group activities to quiet reflection. The room integrates living trees, nourished by a rainwater harvesting system, reinforcing sustainable values while bringing nature indoors. This biophilic hub promotes wellbeing, social interaction, and ecological awareness within the built environment.



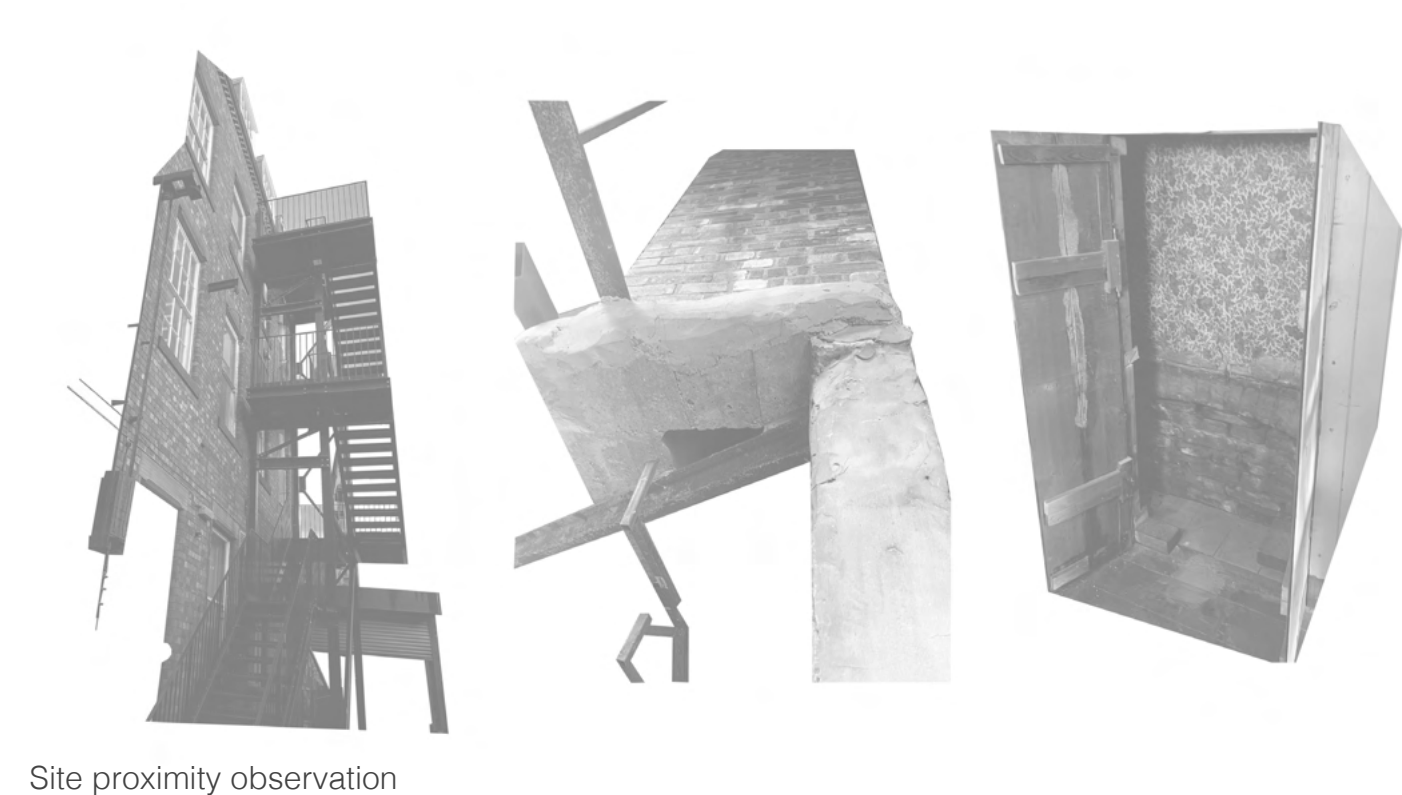
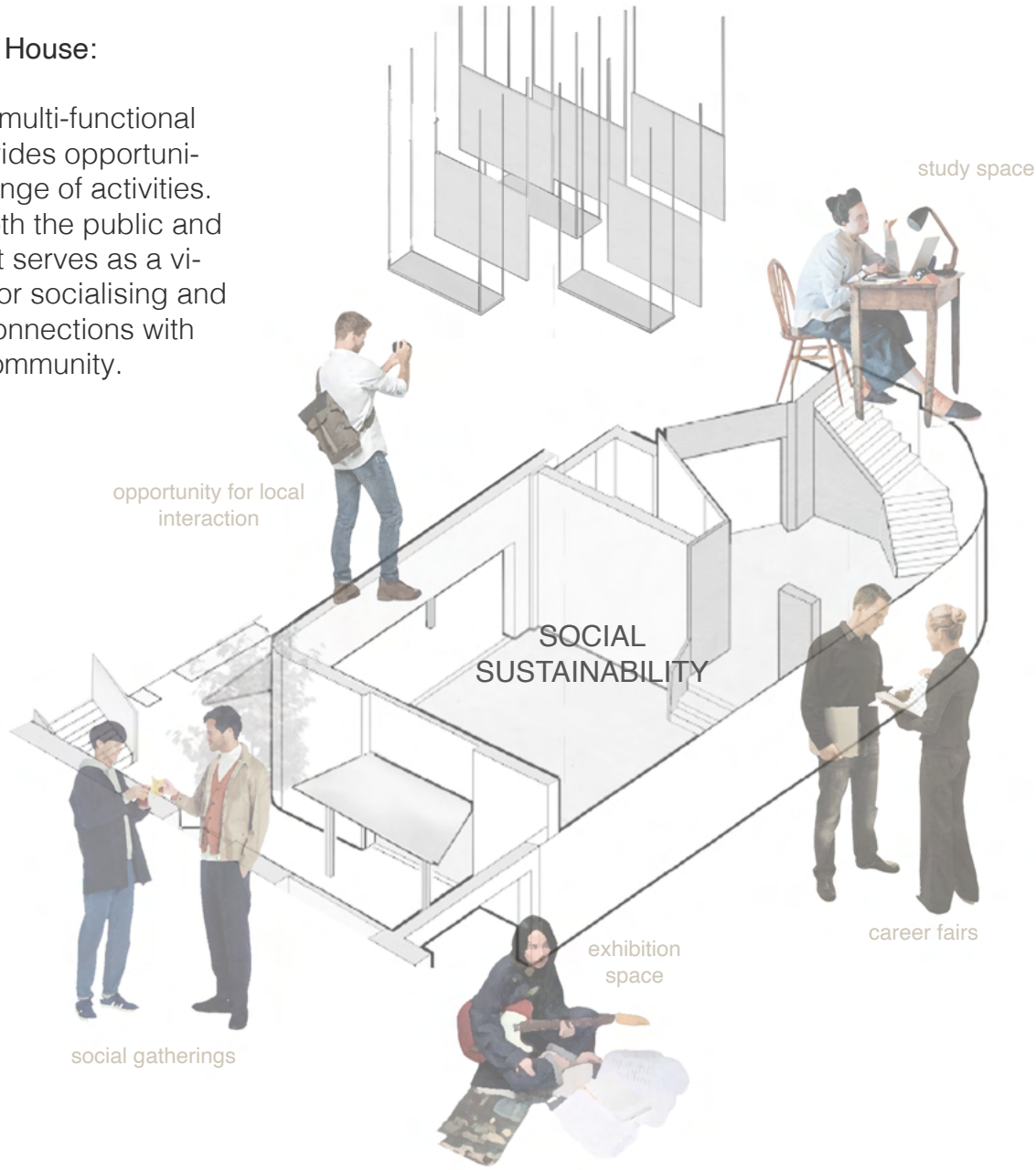


STUDIO PODS (3rd floor)

The studio pods are carefully designed with a compact footprint, providing all essential living functions within a flexible layout that can be easily adapted to suit residents' needs. Their modular construction allows for off-site manufacturing, reducing on-site energy use and minimising construction waste. Designed for easy assembly, disassembly, and relocation, the pods promote building reuse and circularity, helping to conserve resources and reduce material depletion. By using sustainable, recyclable materials and maximising space efficiency, the pods offer an environmentally conscious housing solution that supports low-impact living within the Earth's natural limits.

The Coach House:

Creating a multi-functional space provides opportunities for a range of activities. Open to both the public and residents, it serves as a vibrant hub for socialising and fostering connections with the local community.



Site proximity observation

