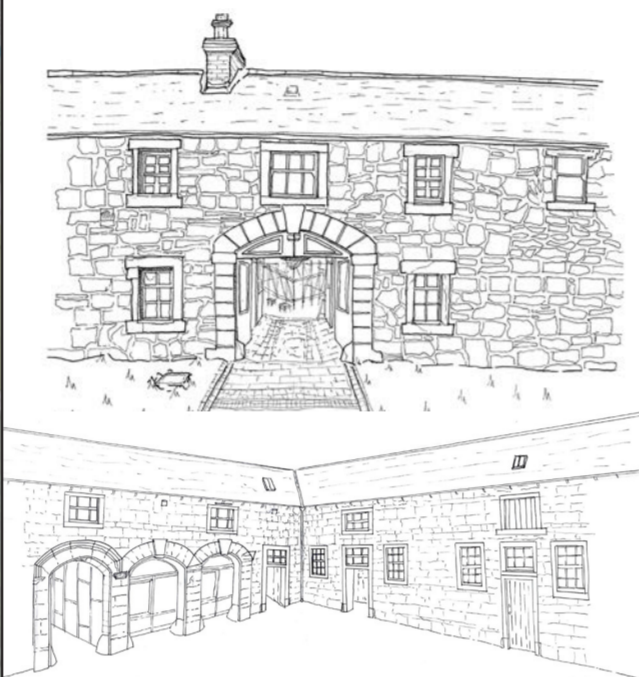
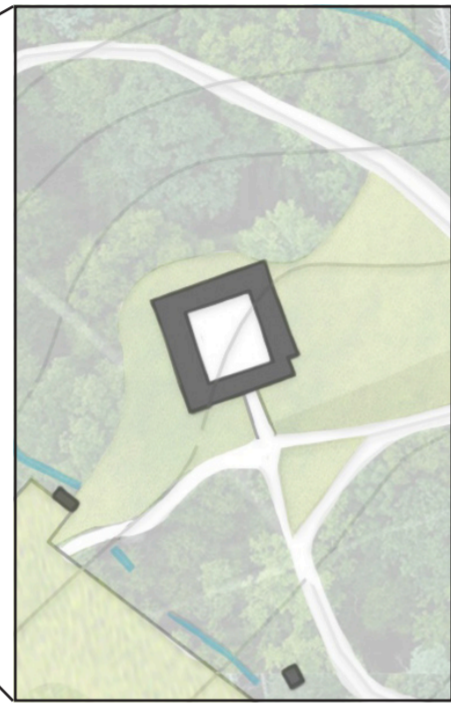
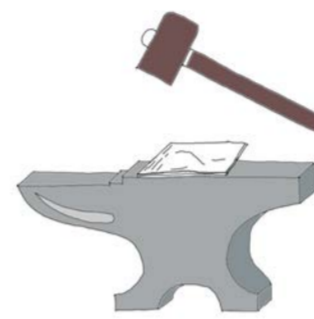




Rural Crafts Revival @ Gibside Stables



Fire -
metalwork and
silversmithing



Water -
printmaking
including lino and
sublimation and cafe
facilities

Earth -
willow weaving,
woodworking and
dry stone walling



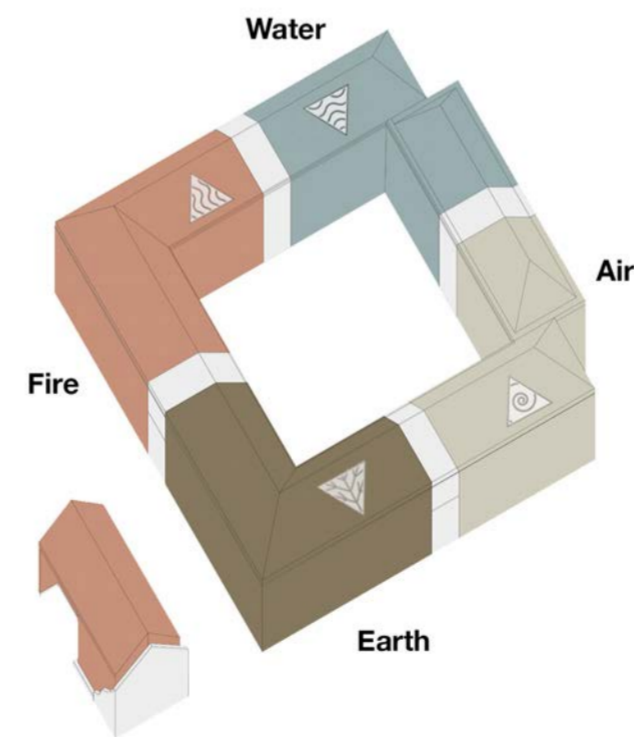
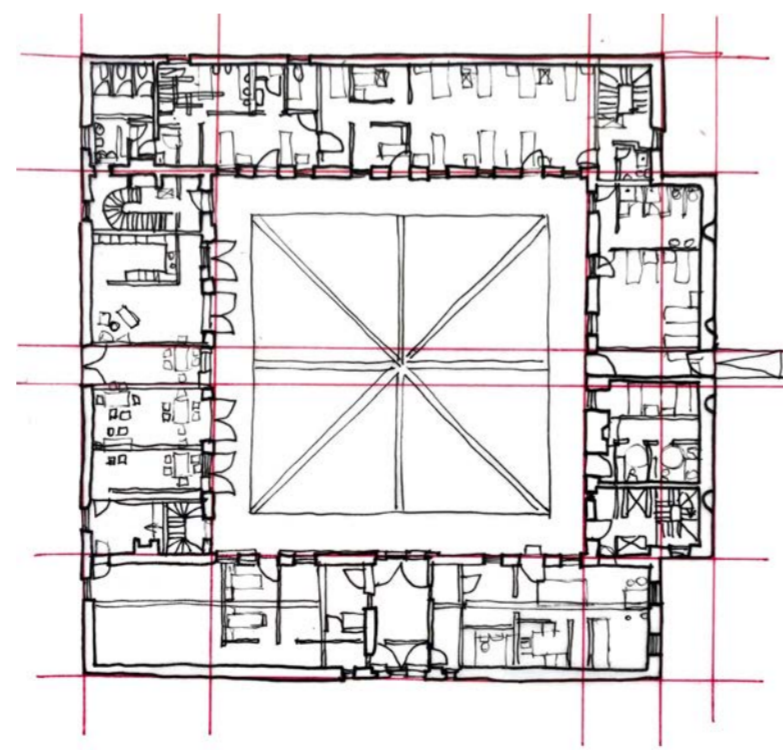
Air -
stained and fused
glassmaking



Handmade
objects and
display cabinet
to showcase
activities on
offer

A **revisoning** and **adaptive reuse** of a Grade II* listed Georgian stable block and blacksmith's ruins on the historic and beautiful Gibside estate in the Derwent Valley. A creative hub for rural craft training and leisure days for **local community groups** and **National Trust visitors** to learn increasingly scarce heritage craft skills including: metalworking, woodworking, willow weaving, print and glassmaking.

The concept is designed around the four elements, **Fire, Earth, Air and Water**, all creating life force or spirit 'prana' and wellbeing when kept in balance. These ancient archetypes rooted in the natural world link the activities with **Gibside's 'spirit of place'** and the wider rural and industrial history of the Derwent Valley.



**West Wing of
Gibside Stables**

**Fire Wing &
The Forge**

Water Wing

**East Wing of
Gibside Stables**

Earth Wing

Air Wing

Gibside Stables is a **working building** designed and built in 1746 by Architect Daniel Garrett. The local labourers, craftspeople and supporting cottage industries in the Derwent Valley were invaluable to the Gibside estate and their legacies live on in the fabric of this building. The National Trust's **'spirit of place' philosophy** at Gibside offers a unique opportunity to revitalise the Stables as a place to **meet, relax and learn skills** actively practiced by civilisations for millennia. Cottage industries where the pinnacle of jobs, livelihood and **community spirit**, this proposal aims to recapture that spirit and inspire a **new collaborative generation of craftspeople**.

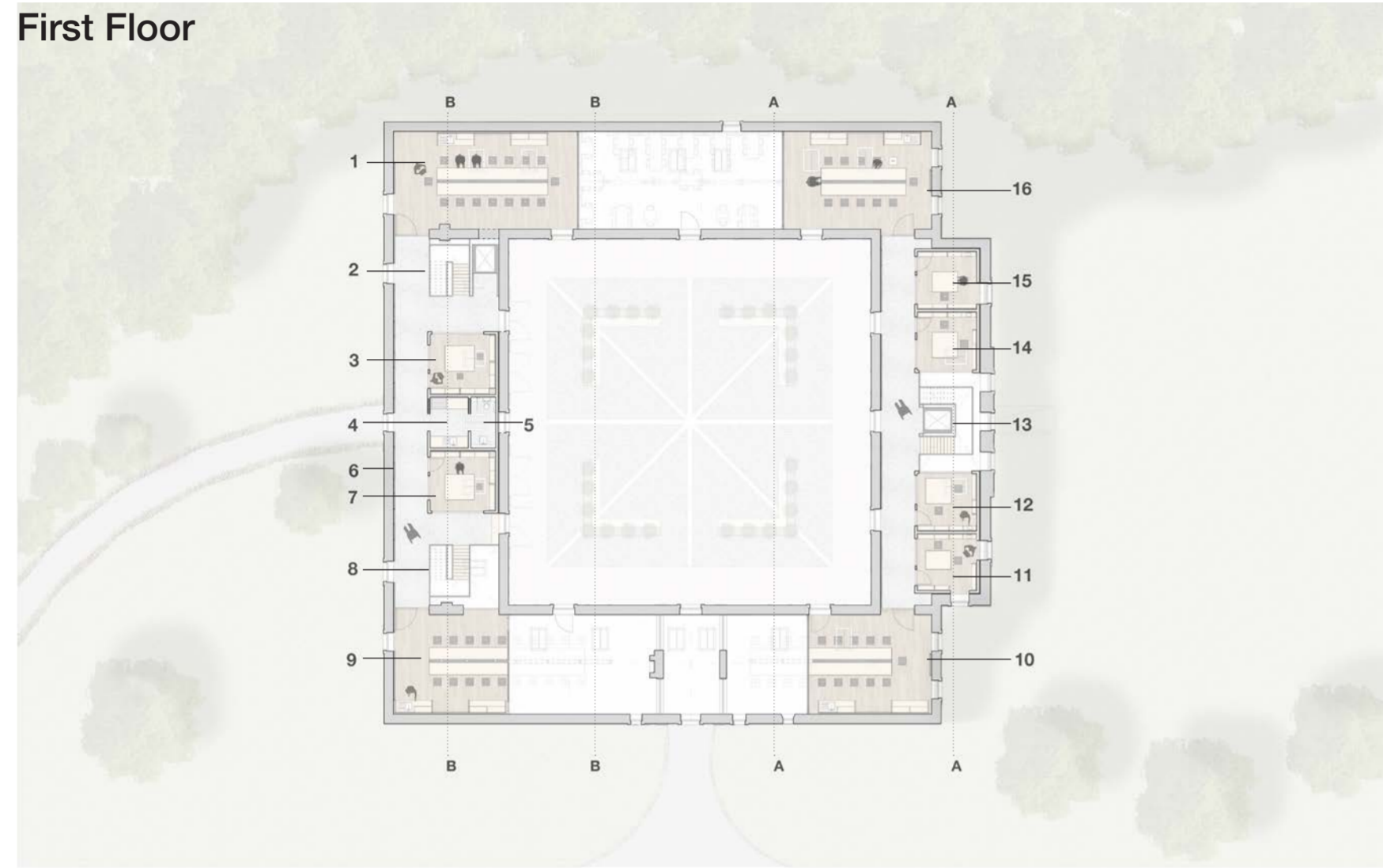
The four wings of the Stables and derelict blacksmiths workshop inform the zones of the spatial strategy each linking to a different element and bespoke programme of activities.

Key interventions including workshops with studio mezzanines and makers' pods interventions create unique spaces for **beginner, amateur and professional craftspeople** in the Stables and the reused blacksmiths workshop. A new café, retail and exhibition spaces offer an **varied and engaging visitor experience**.

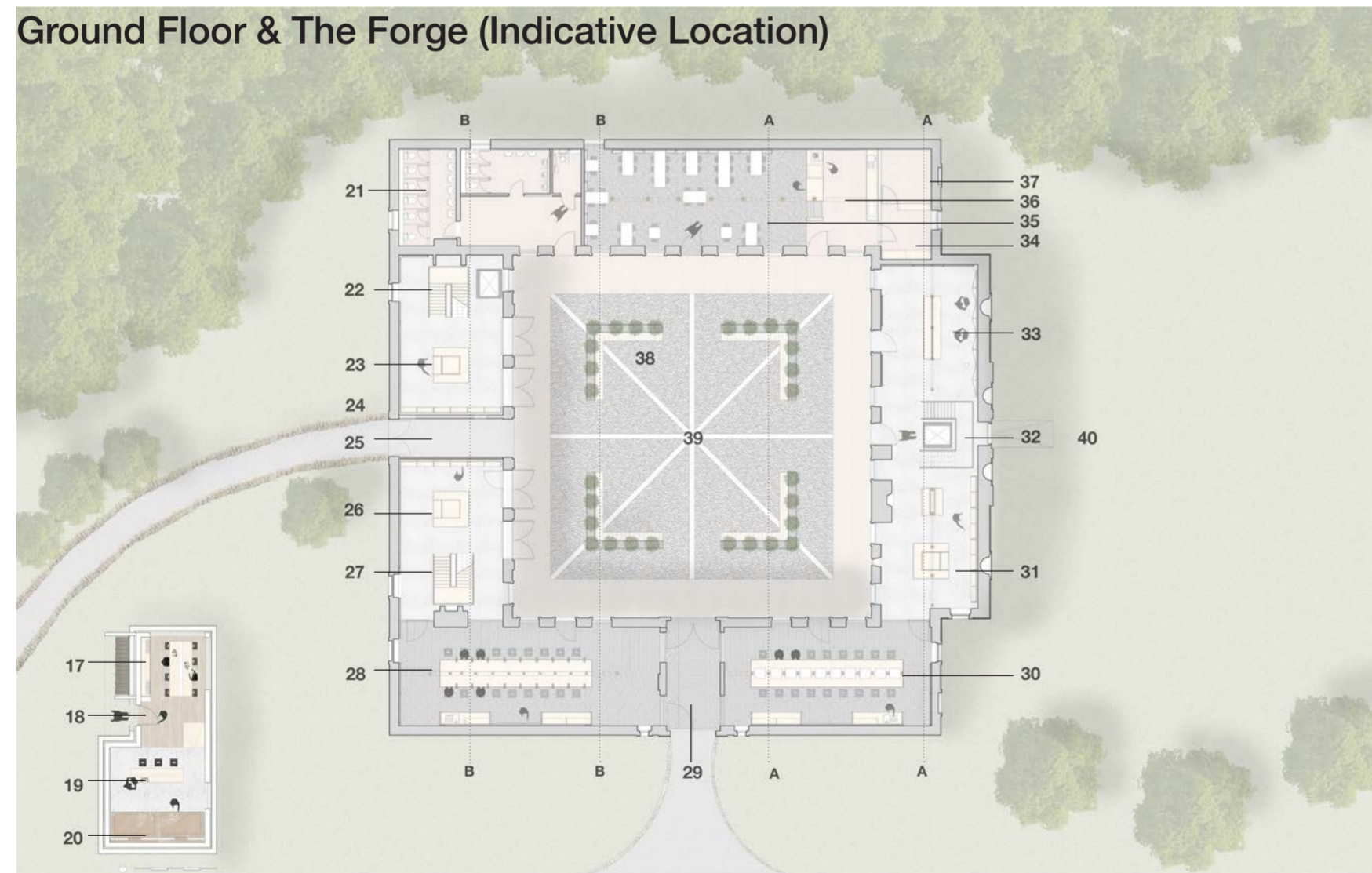
Rural Crafts Revival @ Gibside Stables

Beginner, amateur and professional makers can cooperate visually and kinesthetically through spaces designed to improve the visibility of the crafts person and interactivity of visitors and community groups. The internal and external programme helps revitalise lost skills and encourage community spirit whilst creating a sustainable and comprehensive programme on site designed to accommodate all age groups and abilities.

First Floor



Ground Floor & The Forge (Indicative Location)



- | | | | |
|-------------------------------|---|--|--|
| 1. Silversmithing studio | 11. Fused glass pod | 21. Toilets (including accessible toilet) | 31. Air & water retail space |
| 2. Stairs & lift | 12. Stained glass pod | 22. Stairs & lift | 32. Stairs and lift |
| 3. Silversmithing maker's pod | 13. Stairs & lift | 23. Fire retail and exhibition space | 33. History of Gibside exhibition space |
| 4. Kitchen | 14. Printmaking pod | 24. Dry stone walling (external programme of activities) | 34. Storage |
| 5. Accessible toilet | 15. Lino print pod | 25. Exit to the forge and wider outdoor programme | 35. Cafe seating |
| 6. Woven sample wall | 16. Printmaking studio | 26. Earth retail and exhibition space | 36. Cafe kitchen |
| 7. Willow maker's pod | 17. Metal workshop & wood store (indicative location) | 27. Stairs | 37. Plant room |
| 8. Stairs | 18. Forge entrance & ramp | 28. Wood workshop | 38. Courtyard seating & planting |
| 9. Willow studio | 19. Metal workshop preparation area | 29. Main entrance | 39. Courtyard (external programme of activities) |
| 10. Glass studio | 20. Forge & kiln | 30. Glass workshop | 40. Front grass (external programme of activities) |

Spatial Interventions Within Existing Stables

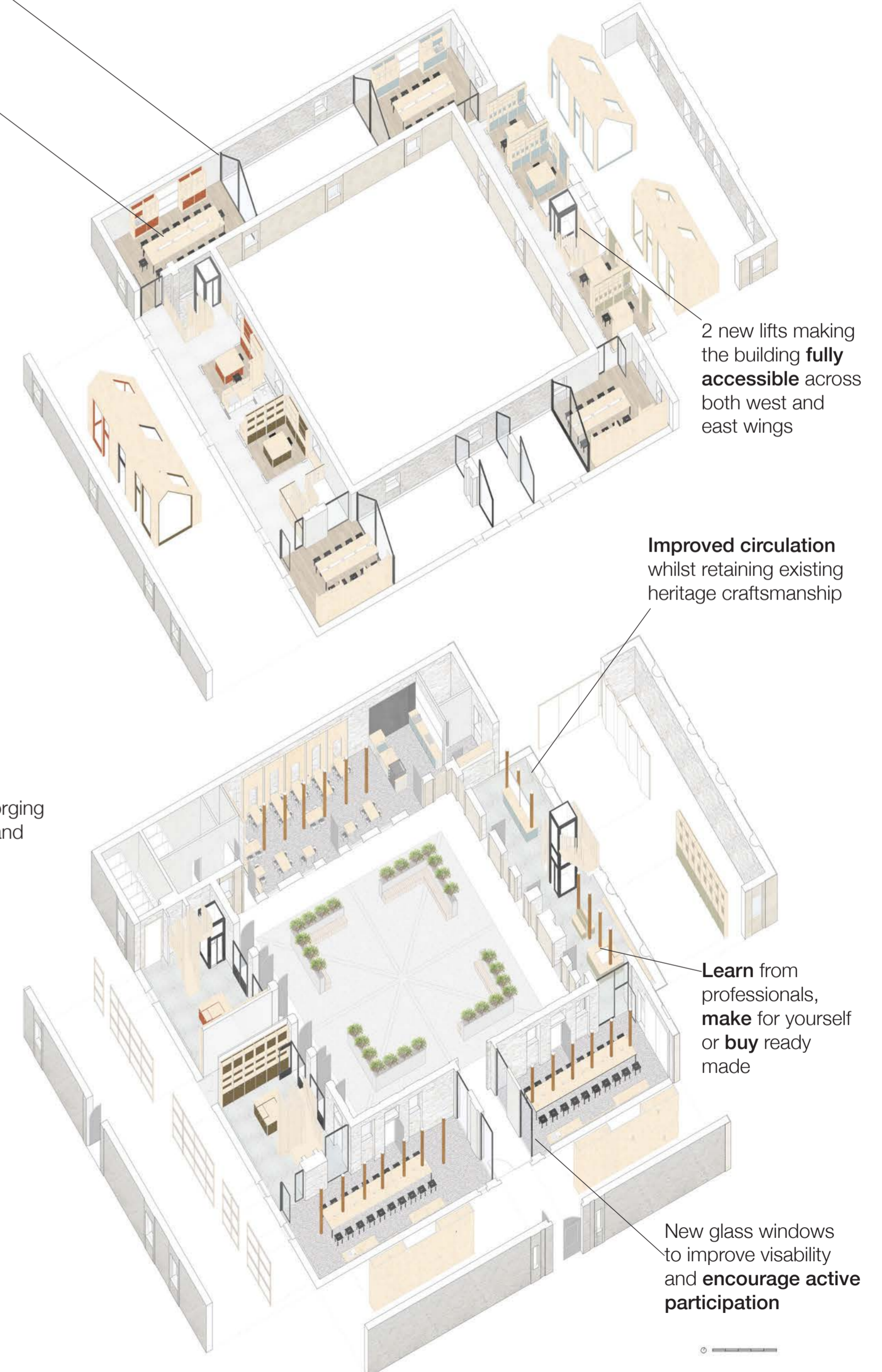
Glass partitions to control acoustics, increase light and improve visibility

Communal table design to promote sociability across different ages and abilities

The Forge Intervention



Access to forging equipment and kilns



2 new lifts making the building **fully accessible** across both west and east wings

Improved circulation whilst retaining existing heritage craftsmanship

Learn from professionals, **make** for yourself or **buy** ready made

New glass windows to improve visibility and **encourage active participation**

Rural Crafts Revival @ Gibside Stables
East Wing - Air and Water

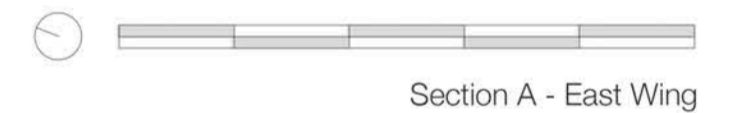


The Stables will be **retrofitted** with a ground source heat pump, new insulation and electric Velux skylights to **improve thermal efficiency**.

Educational spaces to encourage **active participation**.

East Wing is **fully accessible** with lift access, wider corridors and resurfaced floors.

Visitors can view and buy products made on site ultimately **inspiring** them to return to make their own.



Section A - East Wing



-New larger, open plan cafe will facilitate increased visitor numbers, provide **local jobs** and **secondary revenue streams** to be **reinvested** at Gibside. **Local food suppliers** and the **Gibside Community Farm** will supply the kitchen.

-New interactive exhibitions allows local groups and school trips to **engage collaboratively** with the social history of the site as well as inspire a **new generation of makers** to contribute to Gibside as a **sustainable site**.

-Link to **existing external programme** including den building and bushcraft and the creation of **new activities** including willow sculpture making and dry stone walling.

-The Forge can operate as a **seperate, fully accessible working environment** from the rest of the Stables. SPAB heritage skills courses; educational groups and private bookings mean the space is **flexible** for a variety of uses.



Rural Crafts Revival @ Gibside Stables
West Wing - Earth and Fire



Craft production becomes more **visible**, making activities appear **more accessible** and inspiring new participants to **get involved**.

The user journey guides visitors past professional makers to show the beginner or amateur what they seek to achieve - **learn from each other**

Work is exhibited **visually and kinesthetically** - the woven wall provides a sensory experience - learn through touch

Work showcased in the cafe space **inspiring visitors** who may be taking a rest break from alternative activities



Section B West Wing

Earth Wing 1:50 Model -

Interrelationship between the workshop, studio and pod explored through modelling to understand the **user journey**



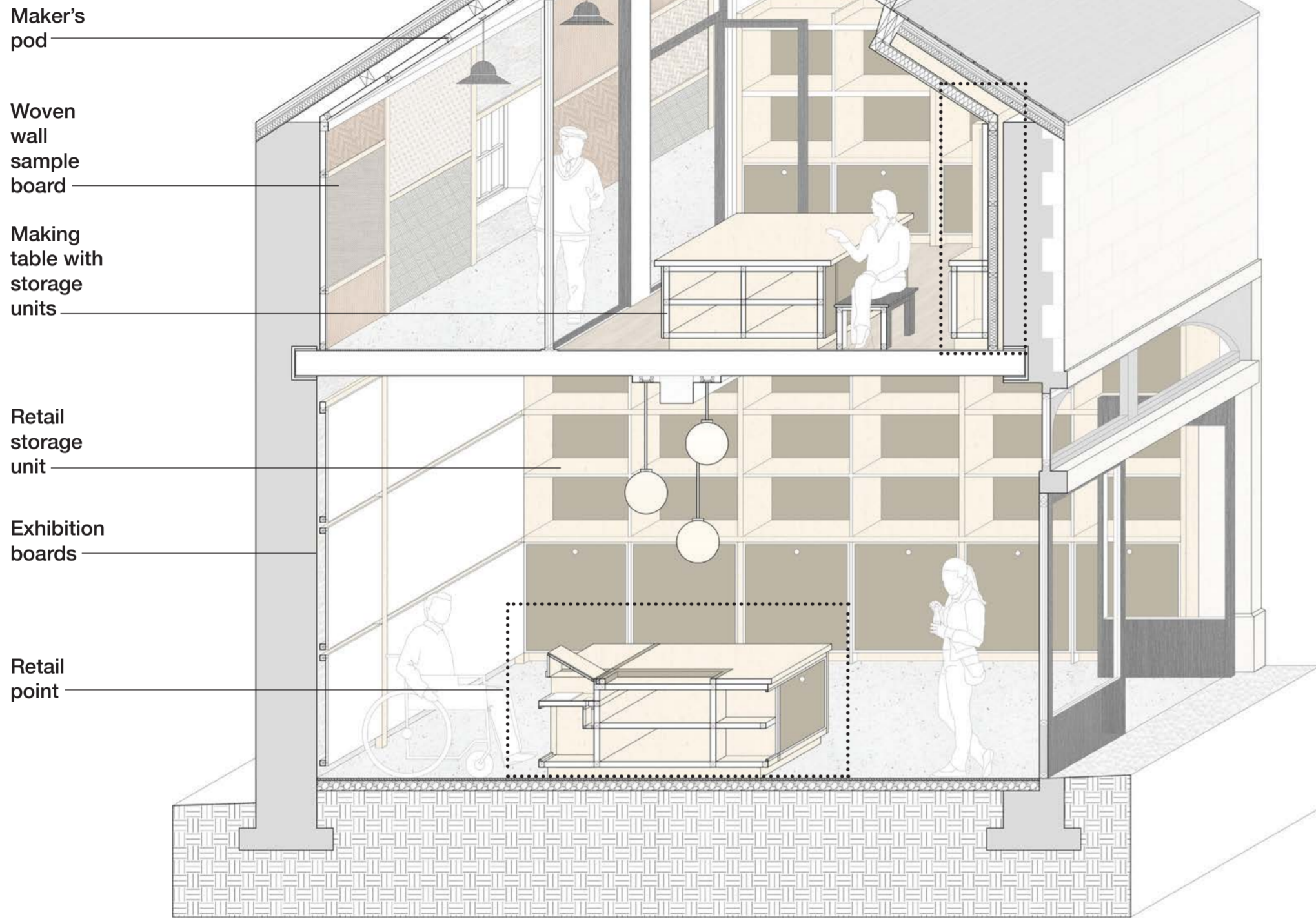
The Forge -

Active space set within woodland for using industrial equipment including a kiln and forge to create unique metal and glass pieces



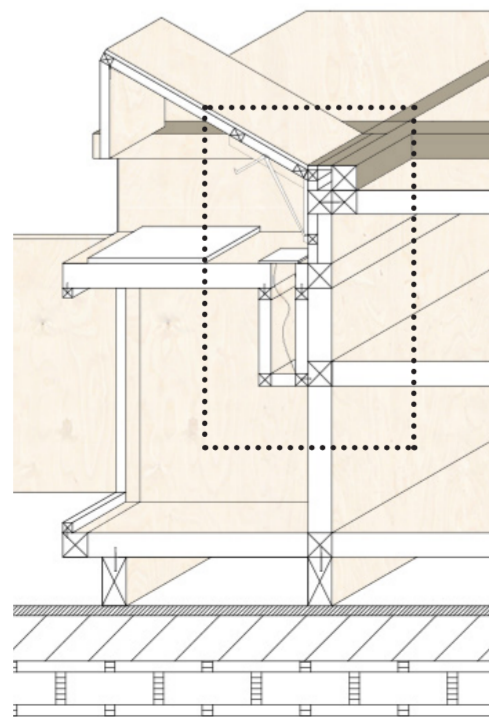
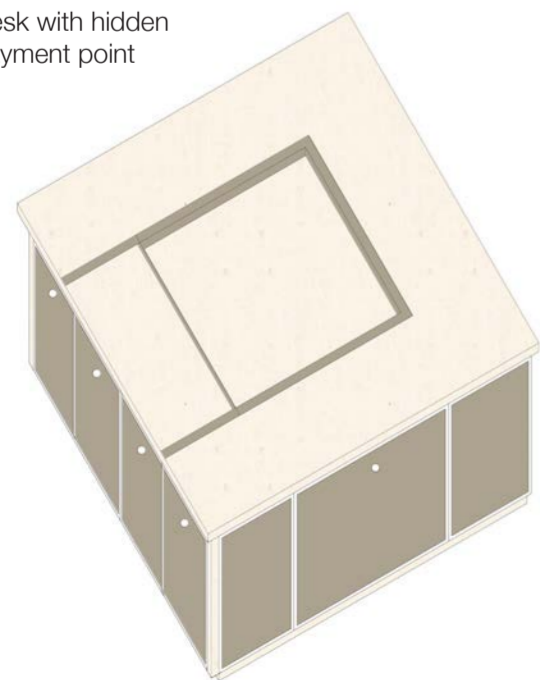
Rural Crafts Revival @ Gibside Stables
Earth Wing in detail

Technical Sectional Axonometric showing spatial relationship between the maker's pod, retail and exhibition spaces

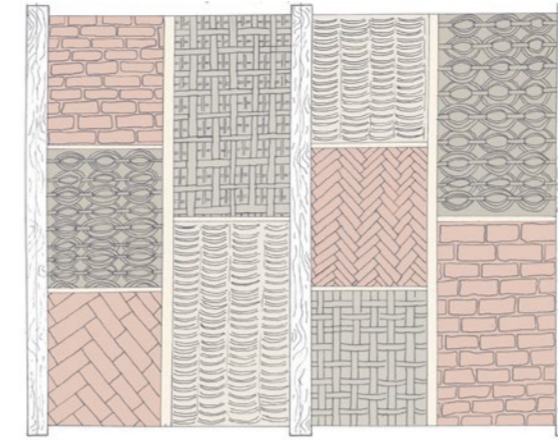


Retail Space - Earth - payment point, display unit and exhibition boards to engage prospective makers

Desk with hidden payment point



Maker's Pod - Earth
 with woven sample wall



Woven wall design inspired by the materiality of the existing walls



Workshop with Studio Mezzanine - Earth



Modular storage units
 -including magnetic tool station, integrated units and shelving
 -units clip together and apart to ensure flexibility in the space

