

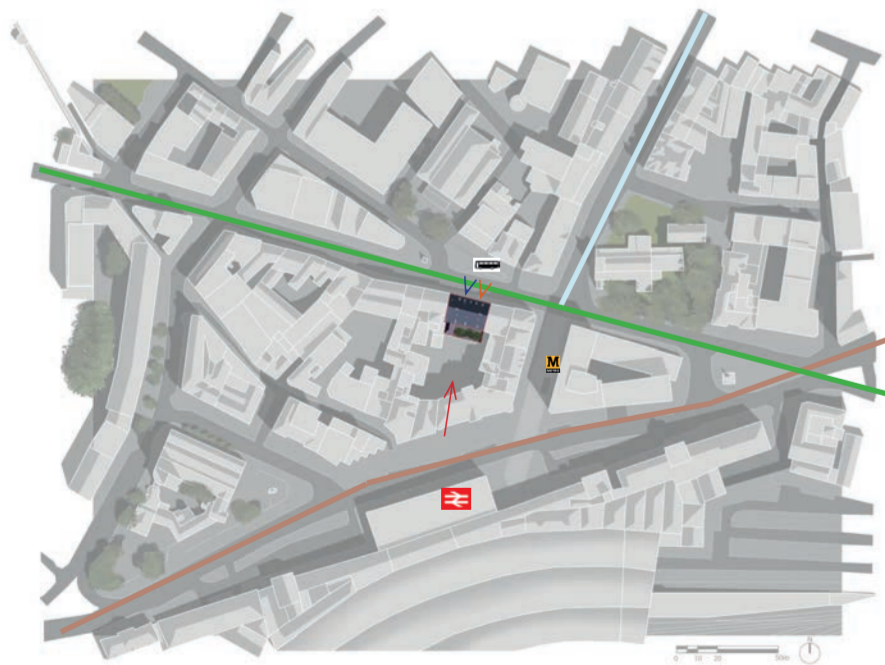


This proposal for 55/57 Westgate Rd references back to the 1700's when the site was an Assembly House as well as a School. The building will be occupied as a Hub for Students and Professionals in the Built Environment Industry.

The core venture of the Design Hub is to provide spaces for any kind of worker. Within the site, visitors can find their perfect working environment ranging from secluded and focussed nooks, to open workspaces designed to encourage visitors to collaborate and make connections.

This Hub represents the future of what a working environment can be, striving to provide variety, as well as opportunity for studying and learning across the community atmosphere created in the scheme.

There is a disconnect between the two universities in the city, as well as between the student world and the professional industry, the merging of these people in one space strives to spark chance crossings of paths which may never have happened otherwise.



- | | | |
|--------------------------------------|------------------------------------|---------------------|
| Central Station Metro Station | Westgate Road, leading to Motorway | Car Access |
| Central Station | Grainger Street | Main Entrance |
| Central Station Westgate Rd Bus Stop | Neville Street | Accessible Entrance |

SITE PLAN

55/57 Westgate Rd is very well connected to public transport links. The site is an equal distance of 1km away from both universities, and being at the doorstep of the train station means students and professionals can frequently visit the hub. The south elevation has many large historic windows to benefit from sunlight from the south.



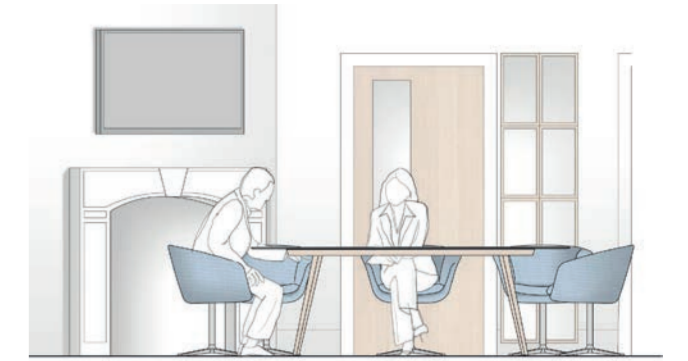


LONG SECTION
1:50 Scale (AA)

RANGE OF WORKING ENVIRONMENTS



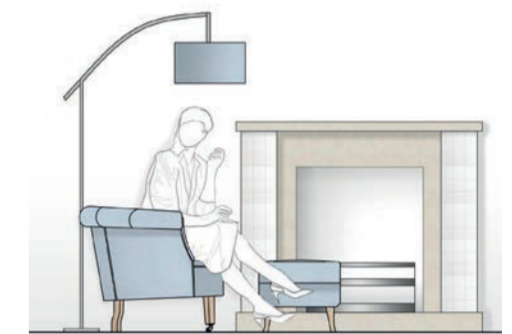
The hub will have a range of comfortable areas for visitors to find their perfect working environment.



Meeting Rooms ranging in occupancy size - Small (Up to 4 people), Medium (up to 8 people), Large (12+ people). Set within historic 1st floor rooms, with presentation facilities.



Individual Study Booths
Plugs, USB ports.
Colour of upholstery is inspired by the baby blue plasterwork in the Grand Staircase.

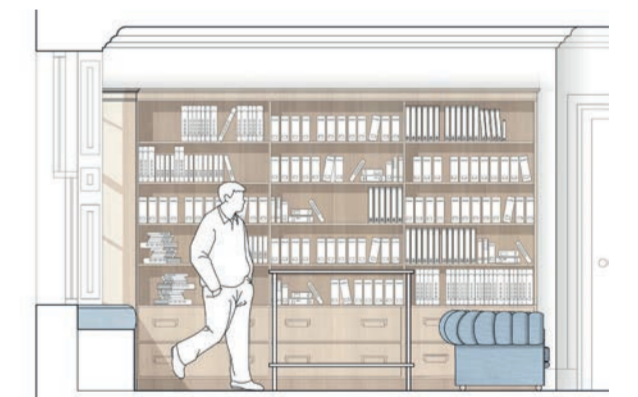


Range of Comfortable Seating
Fireplaces create homely relaxed environment. Visitors can find their favourite unique working environment in the hub.

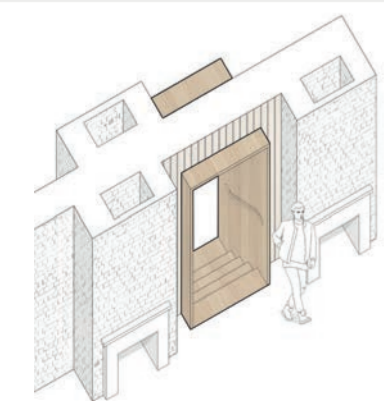
FACILITIES



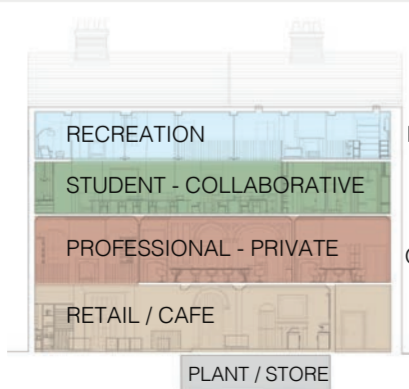
Lockers for short-term storage of personal items while on study break etc.



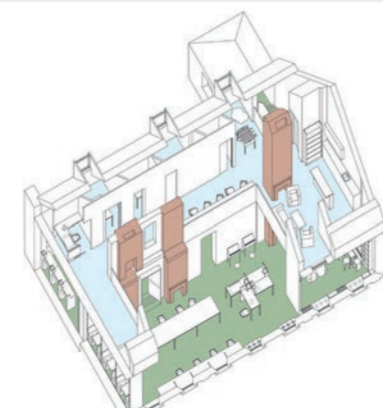
Material Sample Library - available to both students and professionals where visitors can avail of a range of sample materials and fabrics for their projects. Comfortable seating, window seating, existing fireplace.



Interaction Between Existing and New- Contemporary wooden boxes break through existing central walls



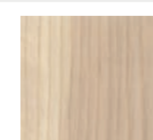
Zoning allows private meeting rooms to be separate from the busy collaborative area.



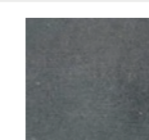
The upper floors are open with a large atrium and celebrate the chimney breasts.



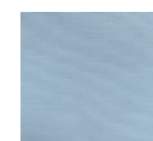
New upholstery in baby blue colour to tie in with elaborate Imperial Plasterwork in Grand Staircase



Solid Ash Wood Panelling / Ash Veneered MDF



Black Velchromat MDF behind ash panelling



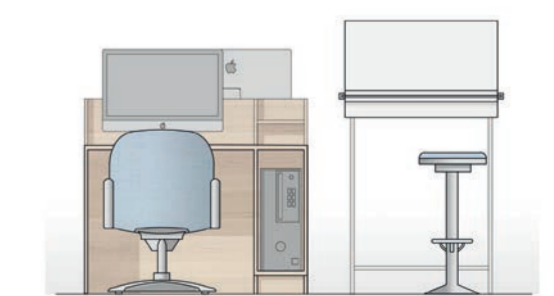
Light Blue Fabric (Proof 0014 by Sahco)



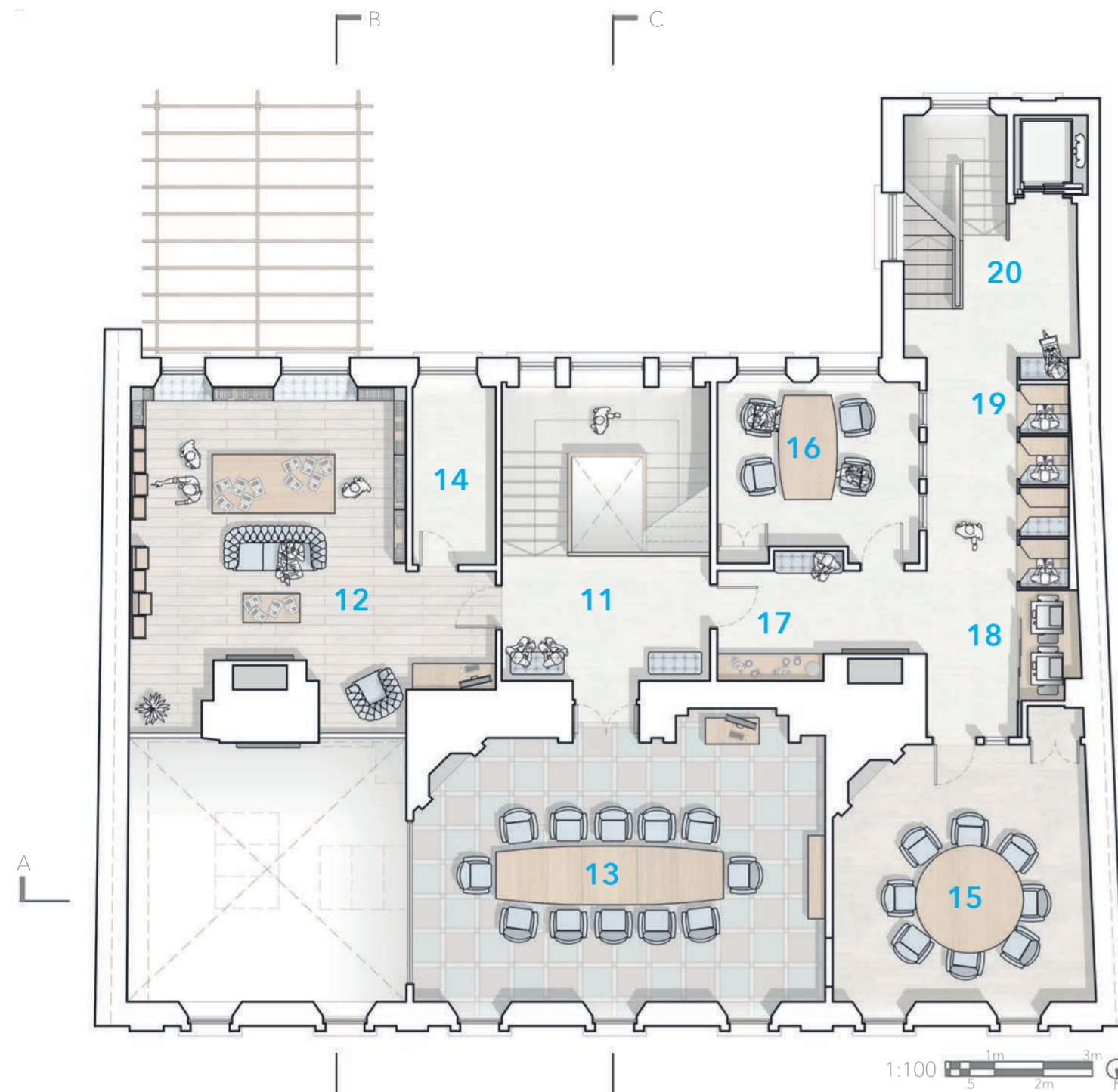
Exposed 17th Century Existing Brickwork



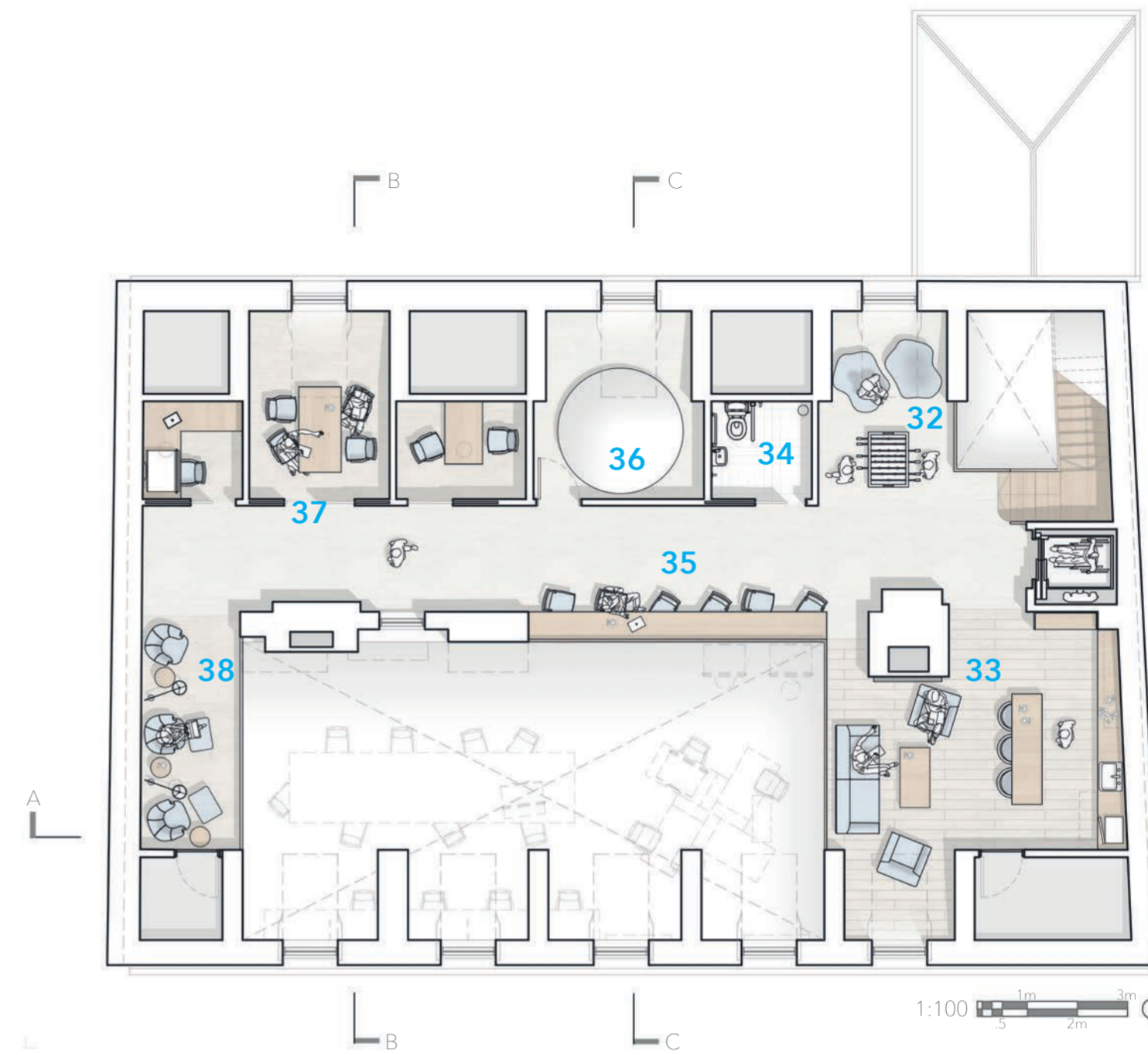
Kitchenette/ Pantry in attic space. Top floor is a relaxed break area where visitors can make lunch, refreshments and take breaks from work.



Architecture Equipment - IT with specialised software, printing facilities, Drawing Boards.



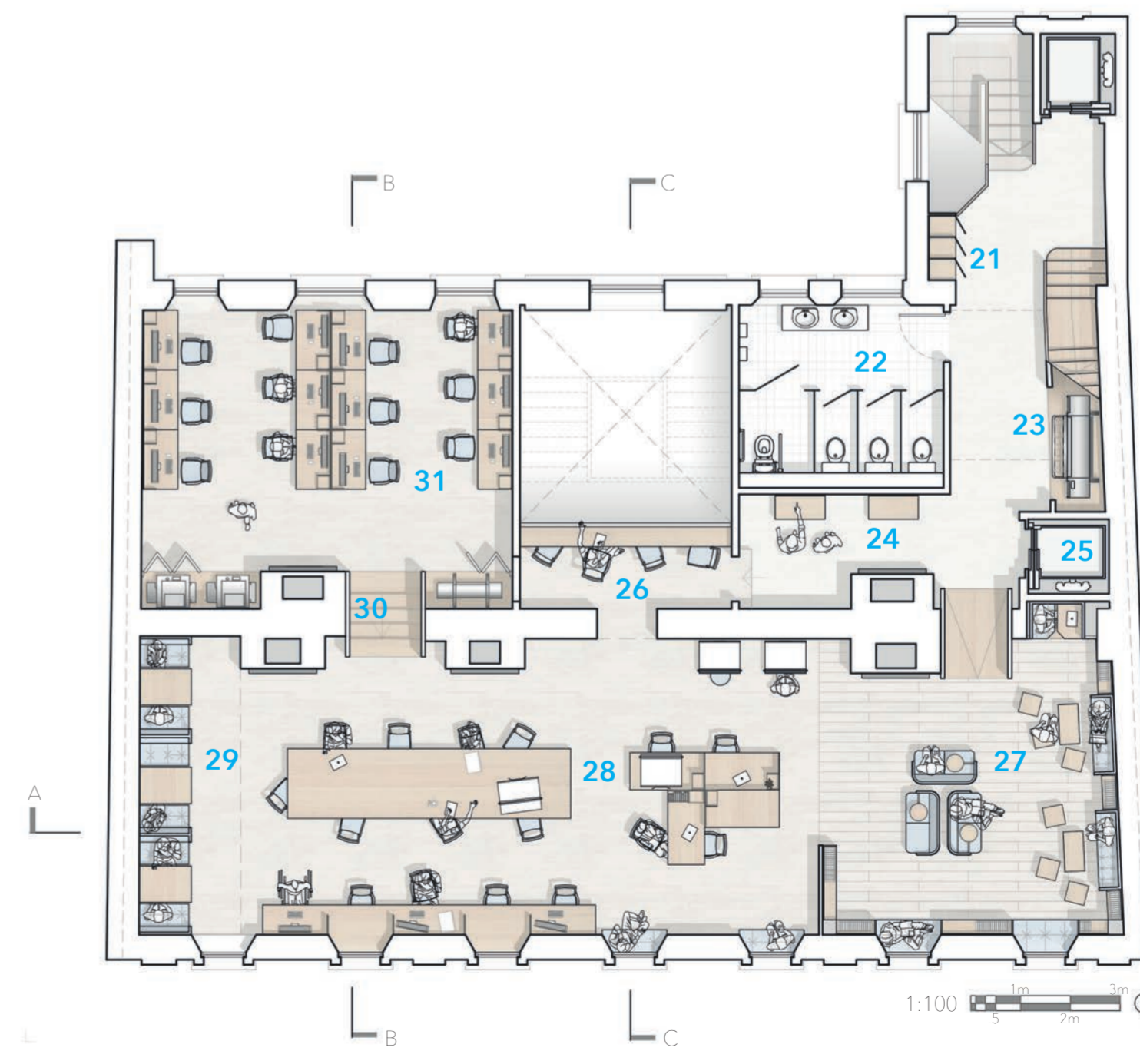
- 11- Grand Staircase - Meeting Room waiting seating
- 12- Material Sample Library - open to all
- 13- Large Meeting Room / Reconfigurable as Large Event Space
- 14- Storage of tables / chairs from Large Meeting Room for events
- 15- Medium Meeting Room
- 16- Small Meeting Room
- 17- Coffee/ Refreshments - Seating
- 18- Printers
- 19- Individual 'Phonebooth' Pods
- 20- Main Circulation Block



- 32- Break Areas
- 33- Pantry/ Kitchenette - Cosy Seating beside fireplace - homely relaxing atmosphere
- 34- Accessible WC
- 35- Seating overlooking Void above Study Hall
- 36- Grand Staircase Dome
- 37- Private Study Rooms - ranging in occupancy size - Light Tunnels for natural lighting
- 38- Armchairs



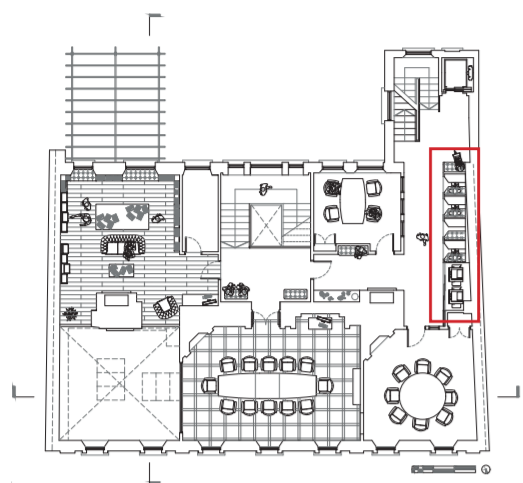
- 1- Cafe
- 2- Shop Floor- selling architecture essentials / Reconfigurable as Event Space
- 3- Cafe Seating
- 4- Outdoor Seating
- 5- Ramped Access
- 6- Unisex Toilets
- 7- Storage for re-stock Cafe / Shop items
- 8- Storage of Display Tables / Chairs for events
- 9- Stairs to Basement - Plant Room / Storage / Staff Office
- 10- Lift - Basement > 2nd Floor



- 21- Locker Storage
- 22- Unisex Toilets
- 23- A0 Plotter
- 24- Pin-Up Discussion Area
- 25- Lift - 2nd Floor > 3rd Floor
- 26- Work Area overlooking Grand Staircase
- 27- Library Zone
- 28- Main Study Hall - Collaborative Table / Individual Desks / Window Seating
- 29- Booth Seating
- 30- Circulation Boxes
- 31- IT Suite - Architecture Software, Printers / Scanners

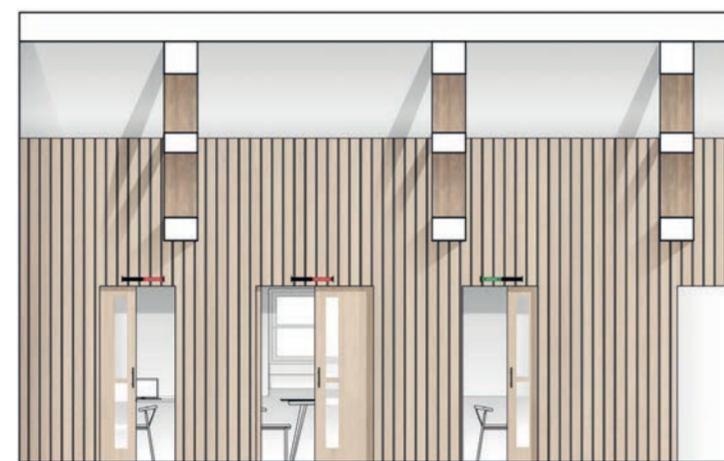
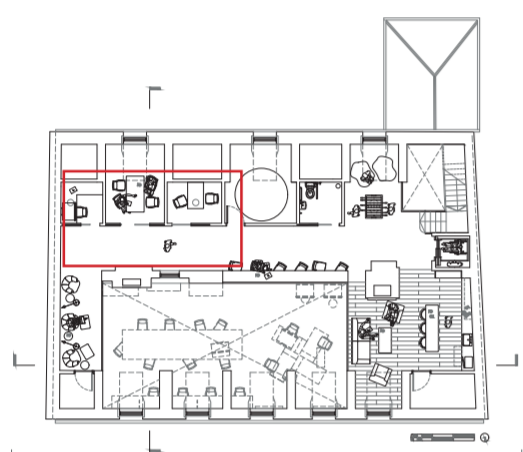
FIT-OUT

New intervention takes full advantage of all the given space within the site



PHONEBOOTHS & PRINTING

Floor plan is used to full potential -This area has study pods and enclosed printing facilities. Ash panelling and sliding doors to create a slick efficient design.



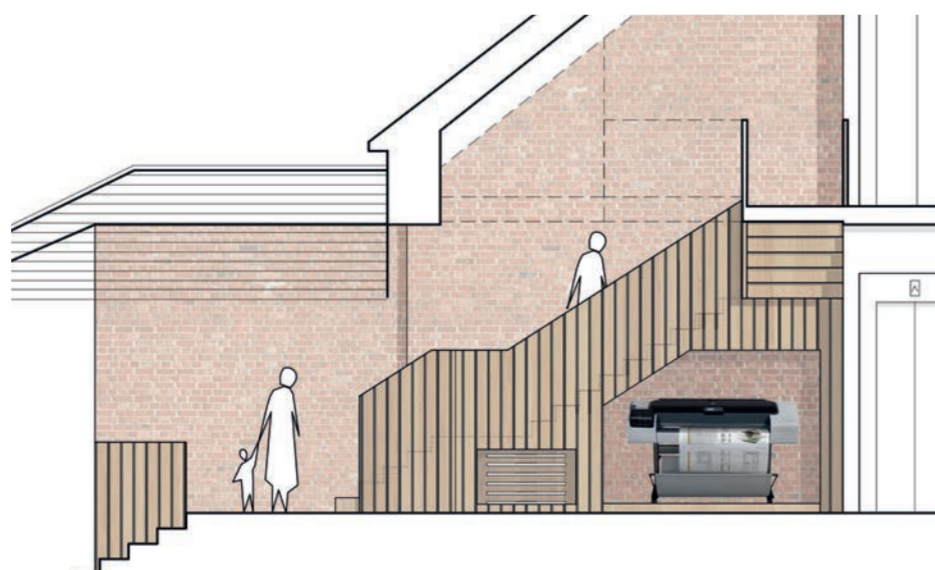
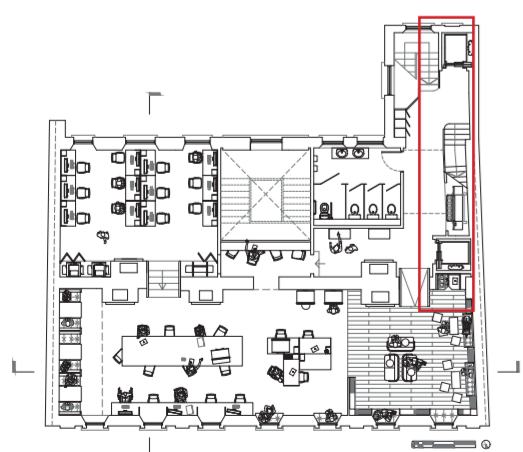
STUDY ROOMS

(Single, Double, Group). Space saving sliding doors with ash panelling. Existing dormer window and new light tunnels bring light to these rooms. All desks in the space are designed to fit drawing boards and with built in electrical sockets.



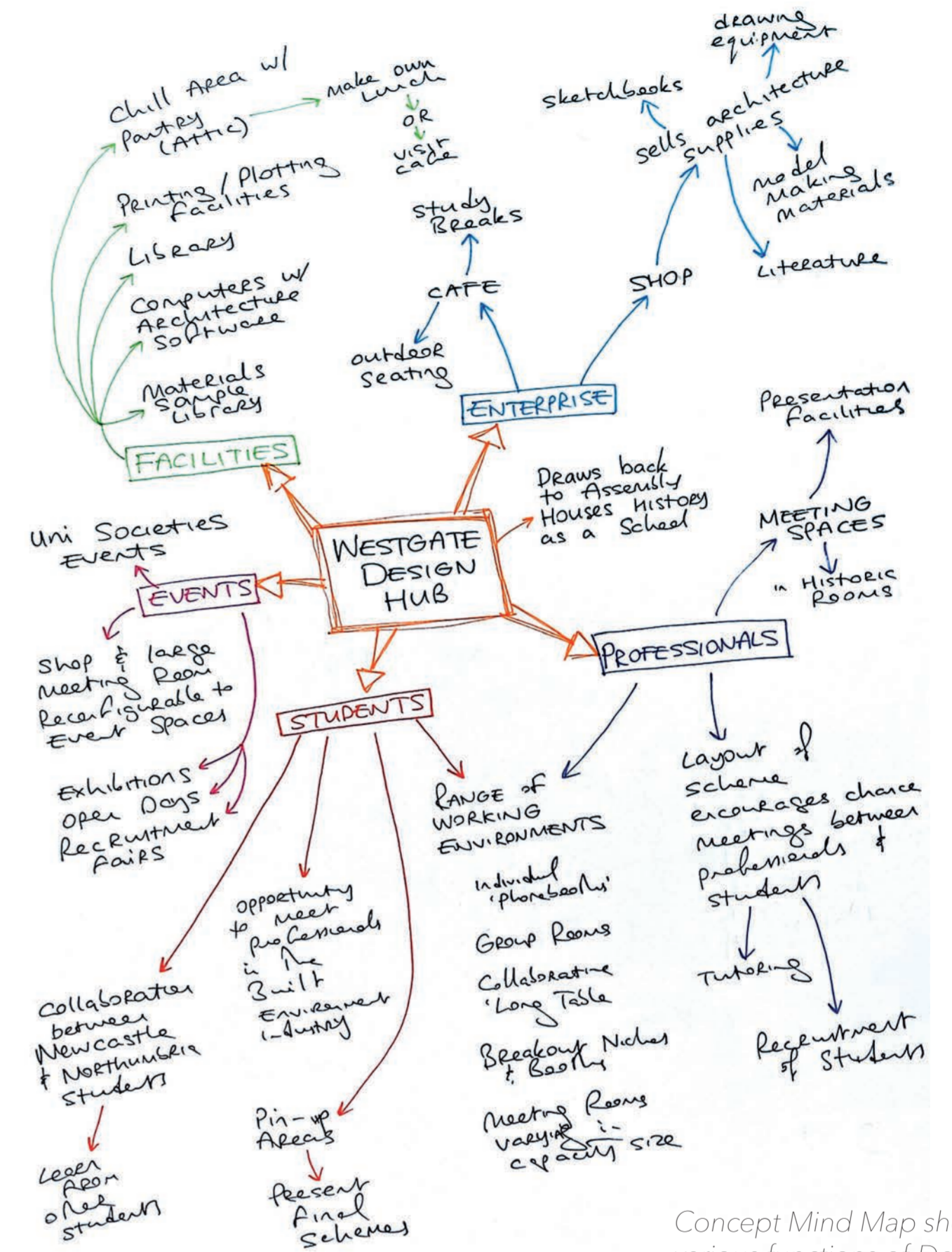
ENCLOSED PRINTING

The IT Suite has printers and scanners which are enclosed with folding doors. New wooden intervention is flush with existing chimney breast and circulation box steps.

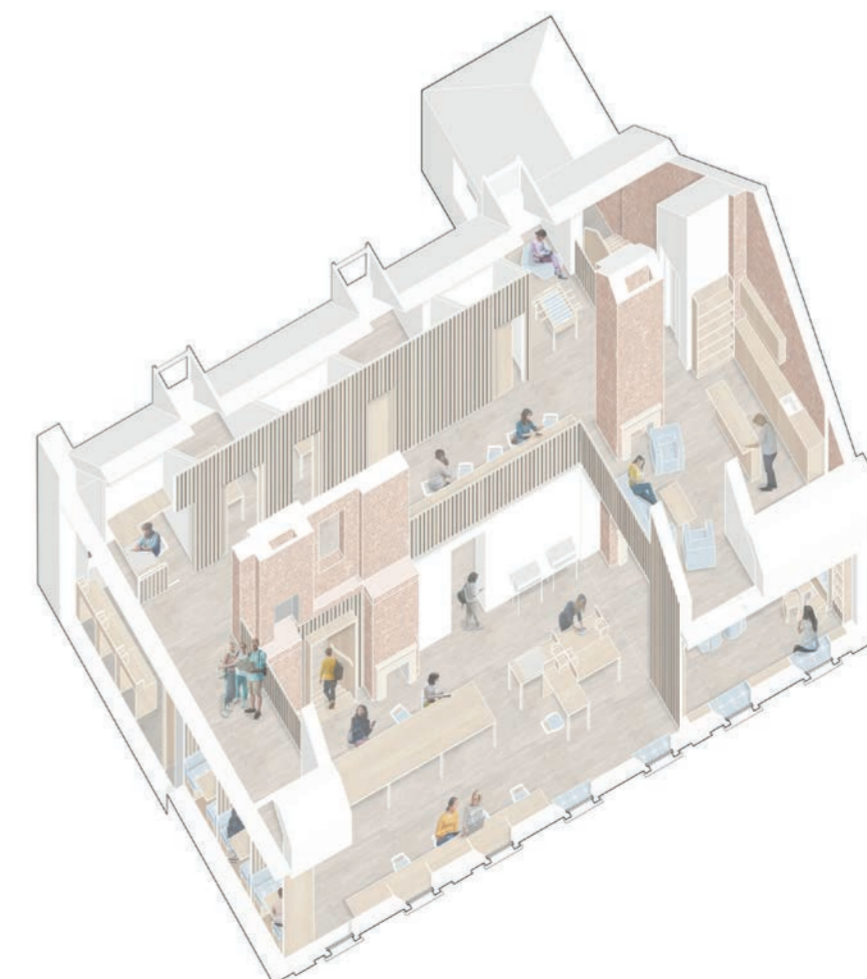


A0 PLOTTER

In the location of existing dilapidated stairs to the attic, a contemporary interpretation provides space below for plotting facilities as well as racks for drawing boards to be borrowed from for use in the study hall. Set against exposed historic brickwork.



Concept Mind Map showing various functions of Design Hub



Scan QR Code to view GIF showing attic space as it changes from current state to proposed state. The new layout functions as a workspace for all to be experienced and tested to find your perfect space to study.



MATERIALS SAMPLE LIBRARY

Contemporary shelving mirrors dimensions and style of existing solid wood furniture found on site. Slots will categorise material samples and book shelves will display sample directories. Window seating and existing fireplace creates a cosy homely environment.



COLLABORATIVE STUDY SPACE

This space accommodates a long collaborative table, booth seating and individual spaces. This area is very open to encourage conversation, the double height opening allows the roof trusses and chimney breasts to be celebrated. This floor also has computer and printing facilities, reference books, and pin-up review areas.



KITCHENETTE & CHILL- OUT AREA

Visitors can take a break from work and come to the attic space to prepare their own lunch (or visit the cafe on the ground floor). This space will have cosy seating and further study spaces. Visitors can explore the site and find their perfect environment to work within.