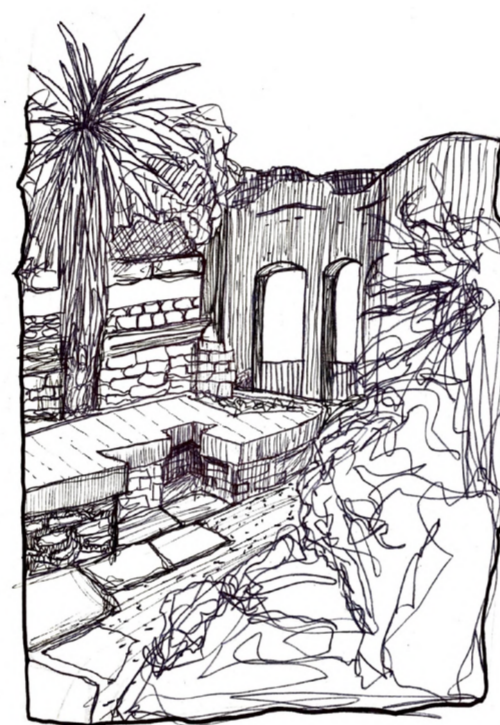
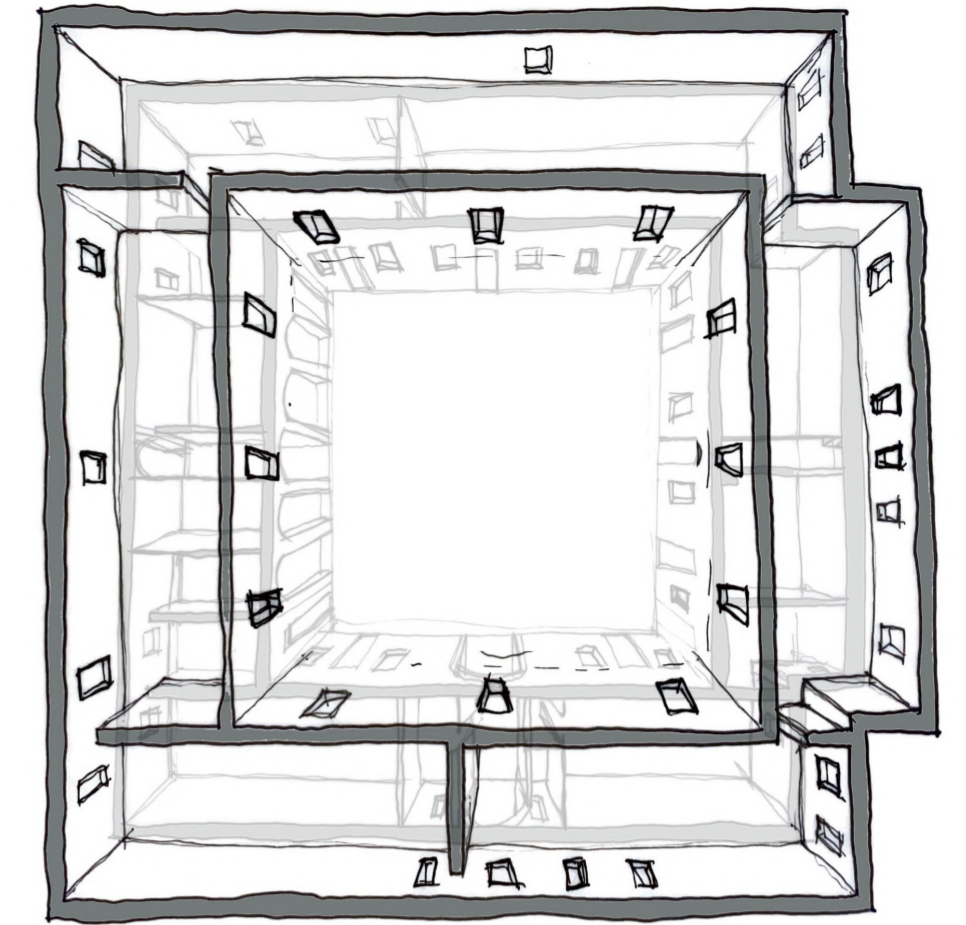
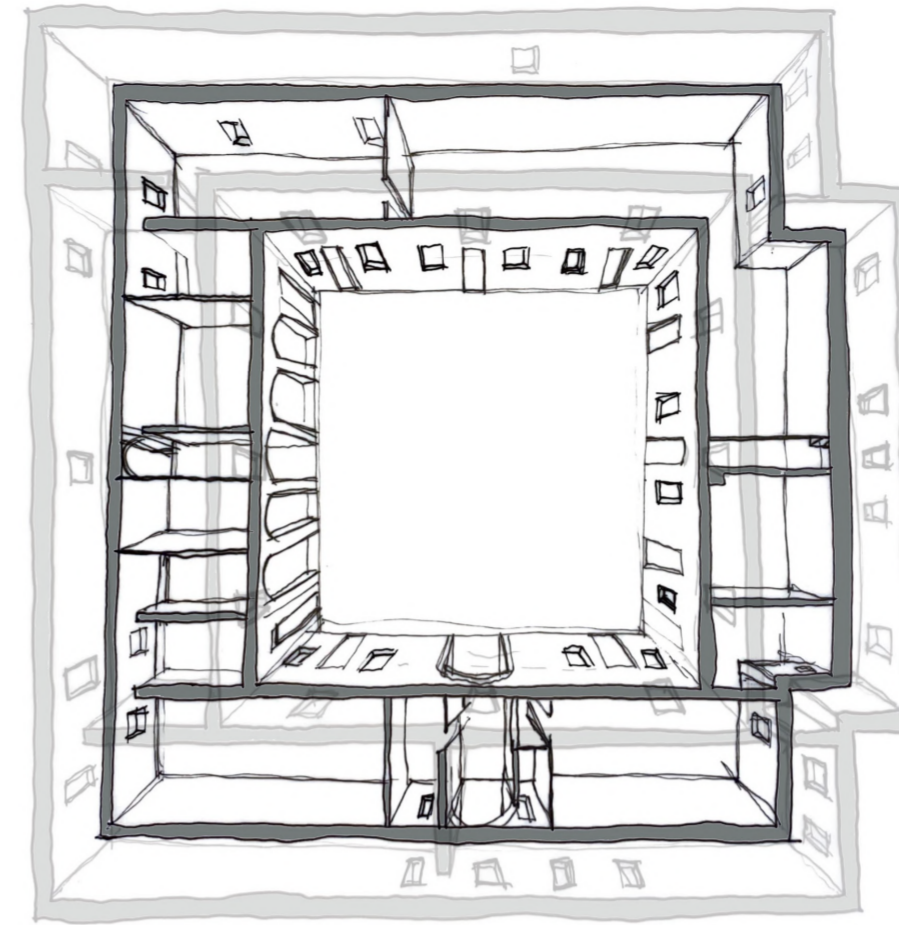
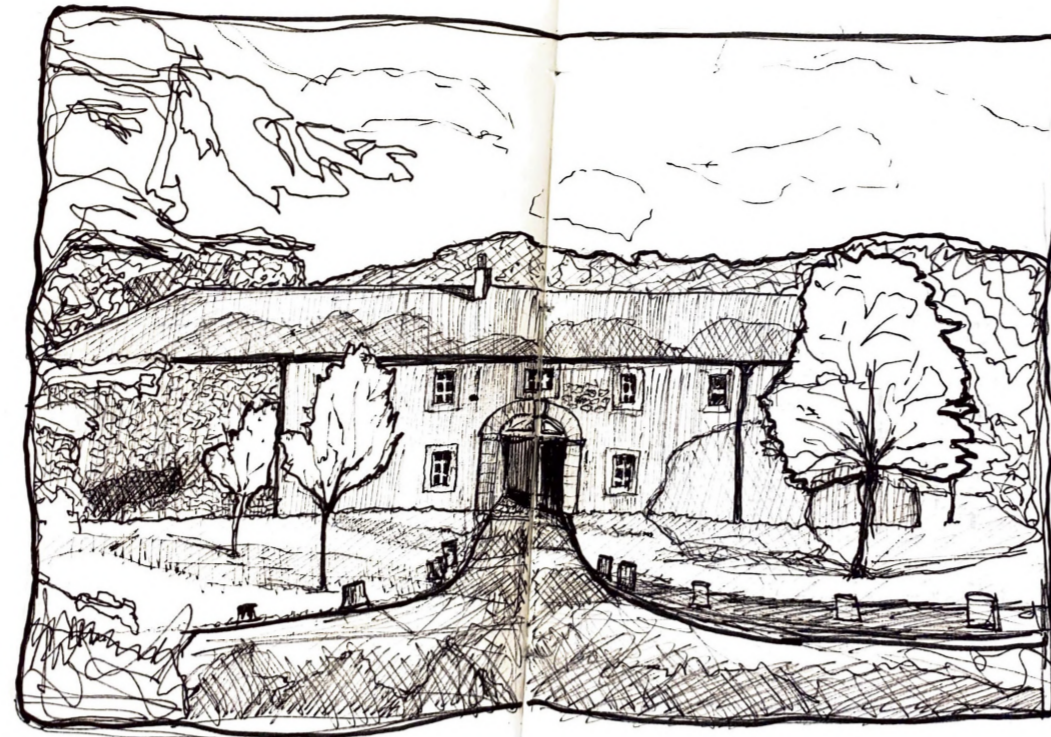


context analysis

The site is located in Newcastle, on the Gibside estate which is part of the National Trust. The building we were given was the former stables and is of the Georgian period. We were tasked to reinvent the purpose of the building and to re-vision it's new use and form. Key themes that stepped out to me during site visits and research were the ideas of escapism, links to Japanese architecture and links to nature.

From this I derived that the new use of the building would be a well-being retreat that uses biophilia and active ways of connecting with the mind and body. There would be links to traditional Japanese architectural styles and methods in a re-envisioned westernised design and approach.

initial site sketches



spirit of place

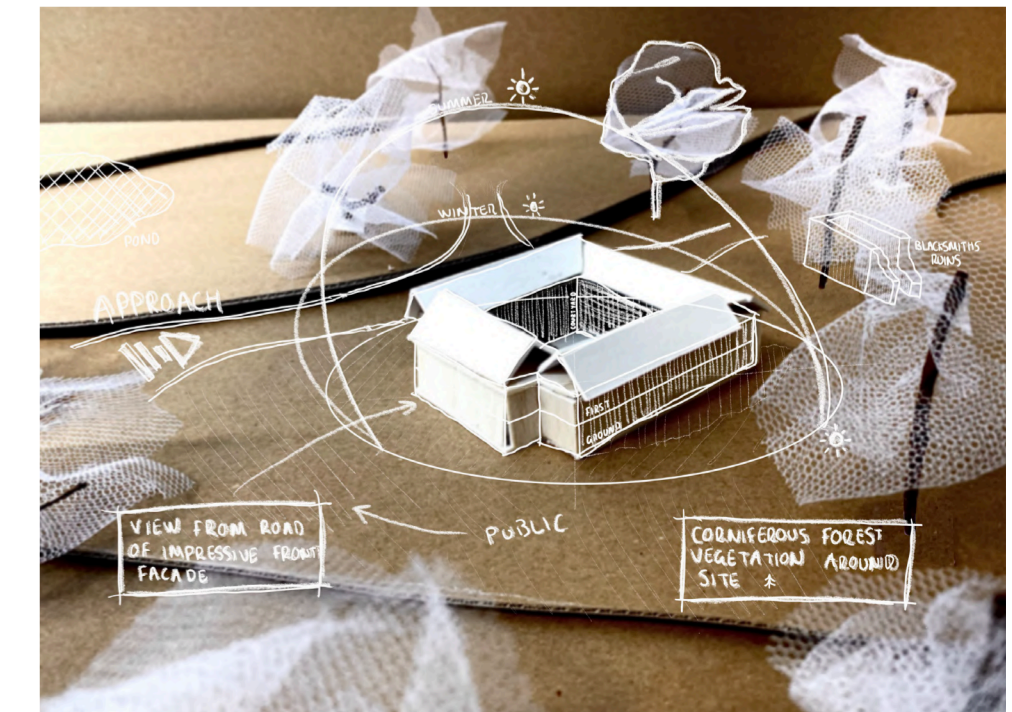
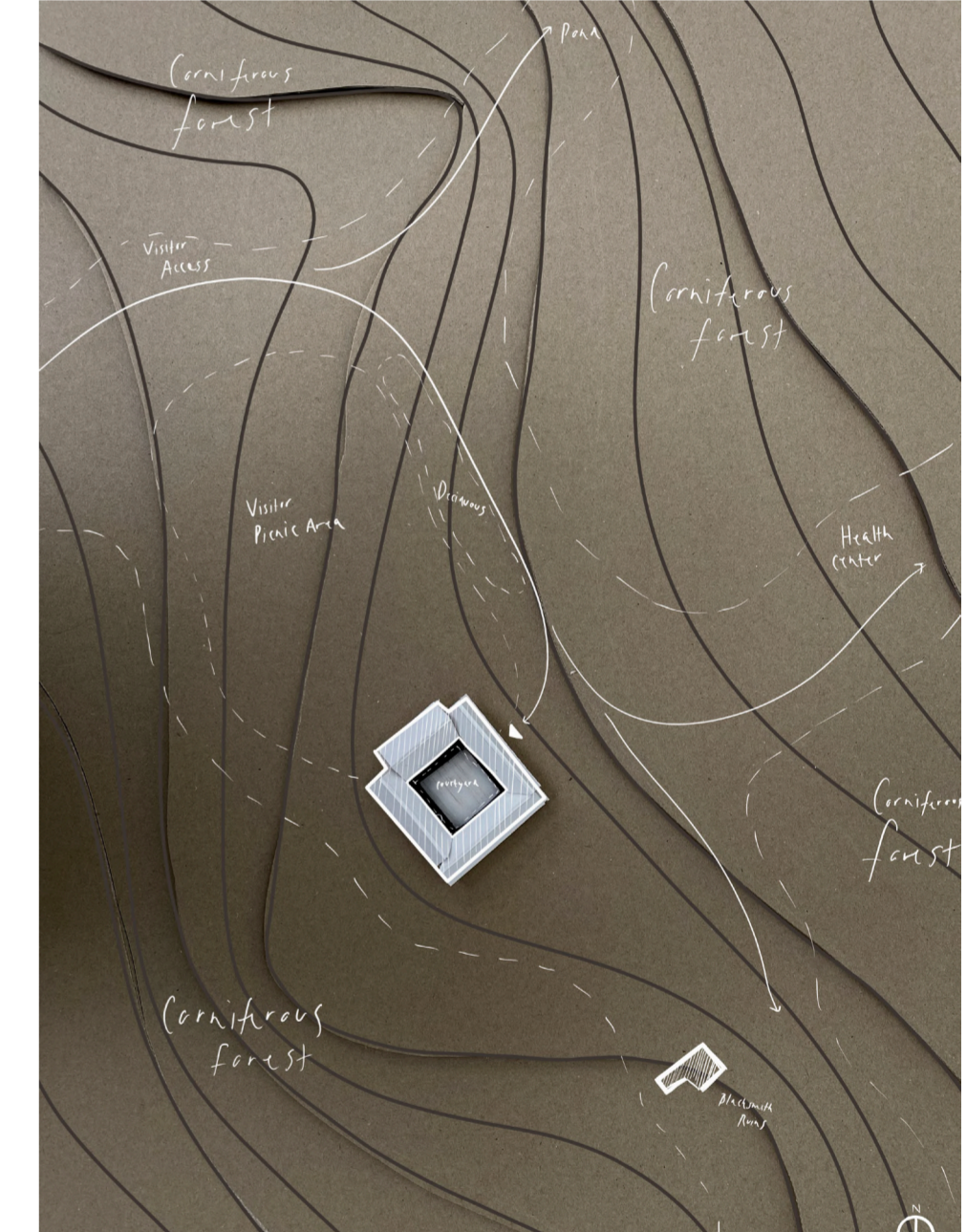
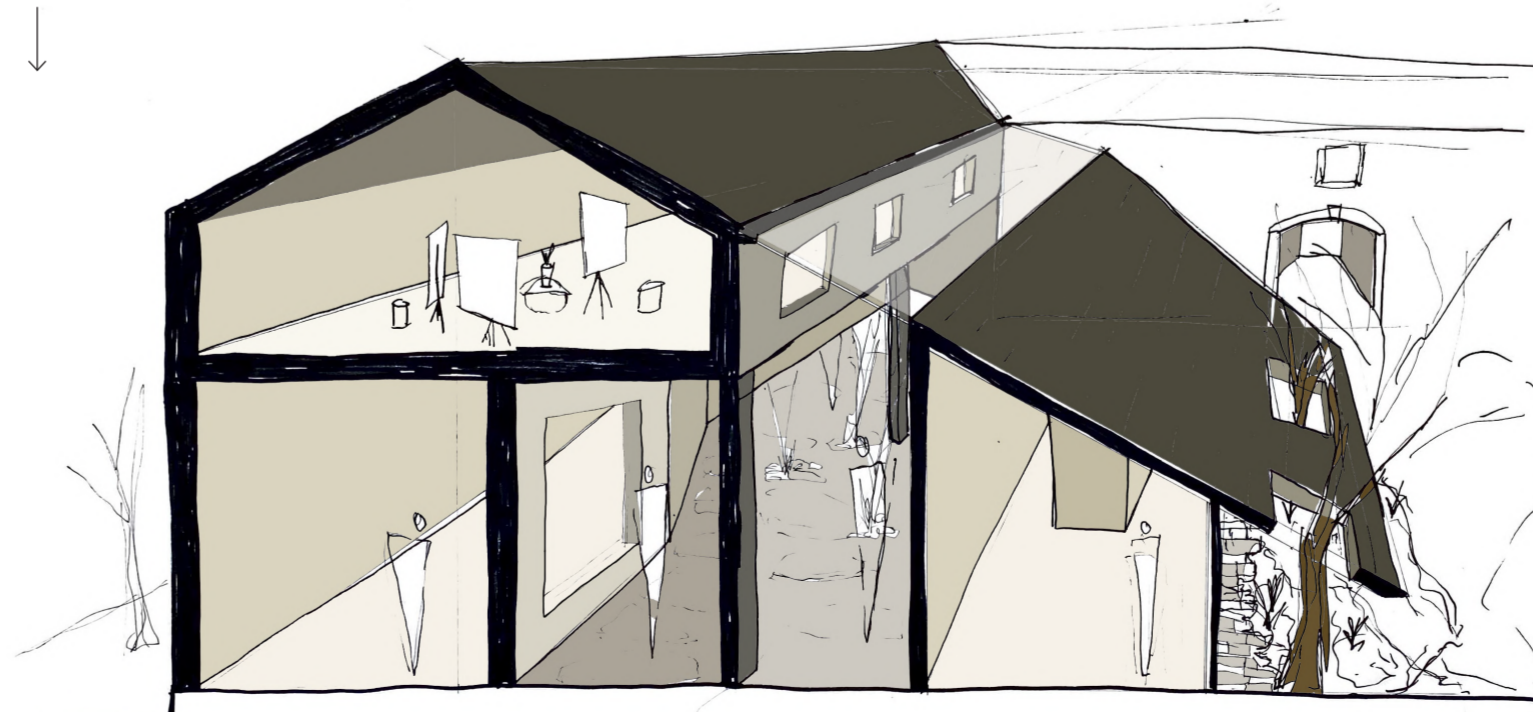
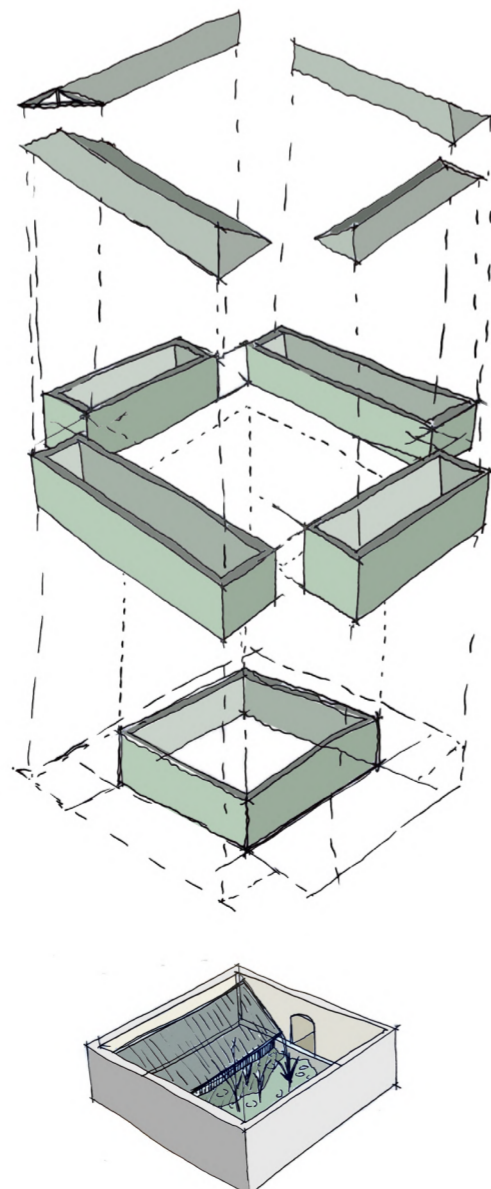
The 'spirit of place' is a Gibside term relating to the sense of escapism users feel when visiting the National Trust site. I have related this to the Japanese concept of 'ma' meaning the sense of place, voids in time and negative space. In my theory module I put together an essay on the ideas of space and place and the Japanese responses to these ideas. I have used this module to put my new found knowledge into practice to create moments throughout the building targeting different emotions and feelings.



adaptive potential

The building is made up of four sections with an enclosed courtyard. It is grade 2* listed which allows for some adaptation of the existing with good reasoning behind decisions. The courtyard is used for circulation and some bits of outdoor seating, so a proposed new intervention or new life is needed to re-populate the space.

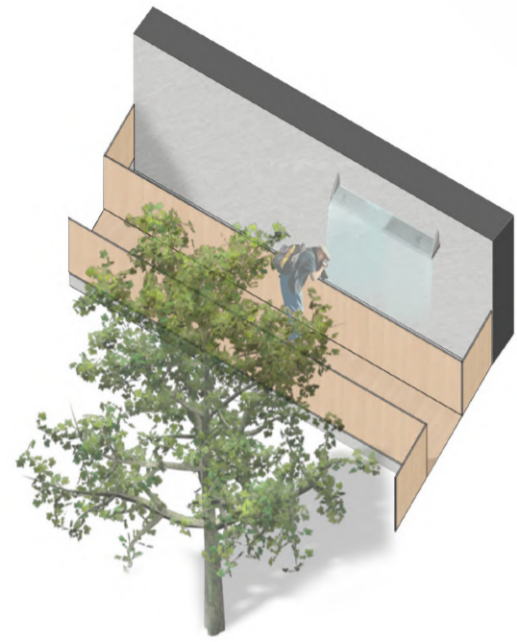
This is a sketch of the proposed new intervention initial idea



functional analysis

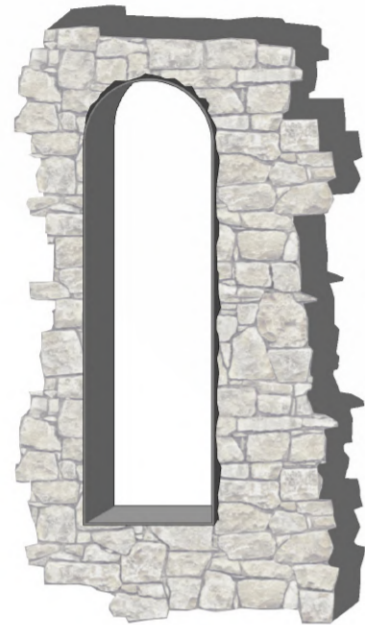
Within Japanese architecture there are four different types of space as listed below; 'ma', 'wa', 'ba' and 'tokoro'. Each space I have used as moments within the existing building to create different feelings and emotions relating to the space's purpose. I have paired each with a corresponding material as a visual anchor for visitors to know which space they are in and its aimed purpose.

This is a 1:50 concept model showing relationship to nature in 'ma' space →



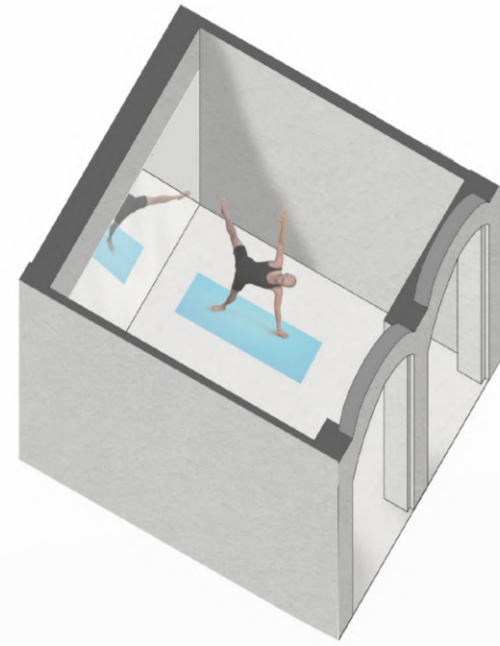
Ma - Negative/void space (WATER)

Will be used to guide visitors as a directional anchor but also as a refresh before going between spaces



Tokoro - Contextual/connection space (METAL)

These will be used to connect the existing building with nature/new interventions



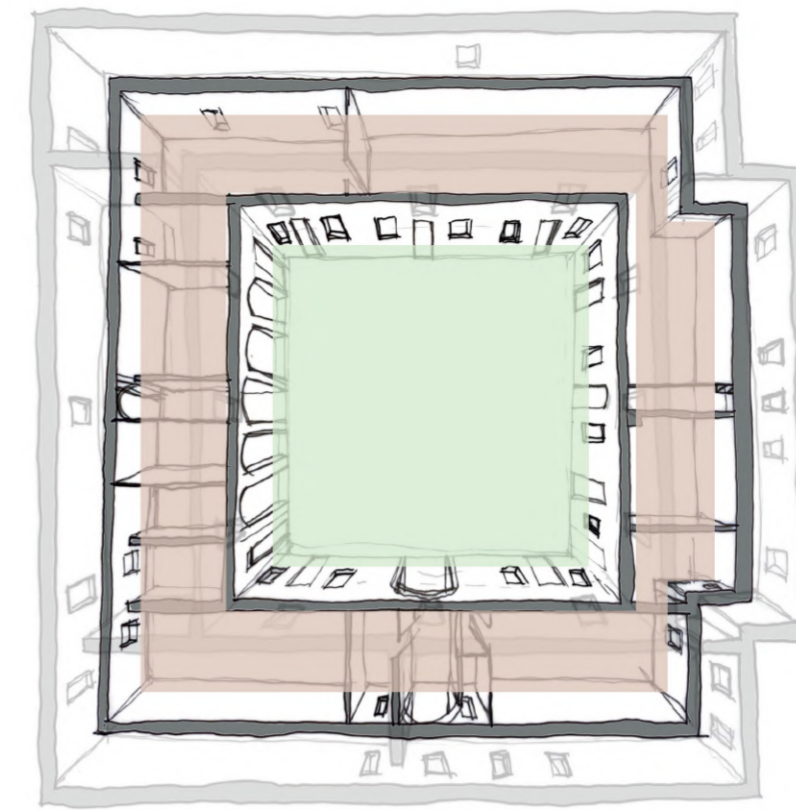
Ba - Knowledge space (STONE/CONCRETE)

These are spaces where new knowledge is gained such as a yoga class.

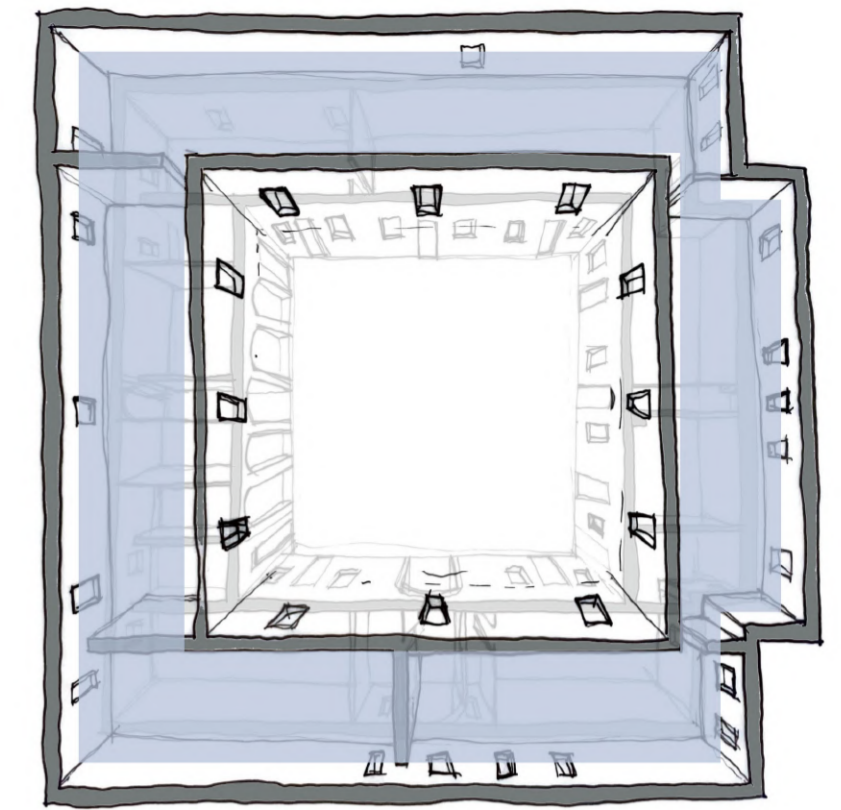


Wa - Relational space (WOOD)

These spaces are moments within the building where users will feel more personal, time for self reflection



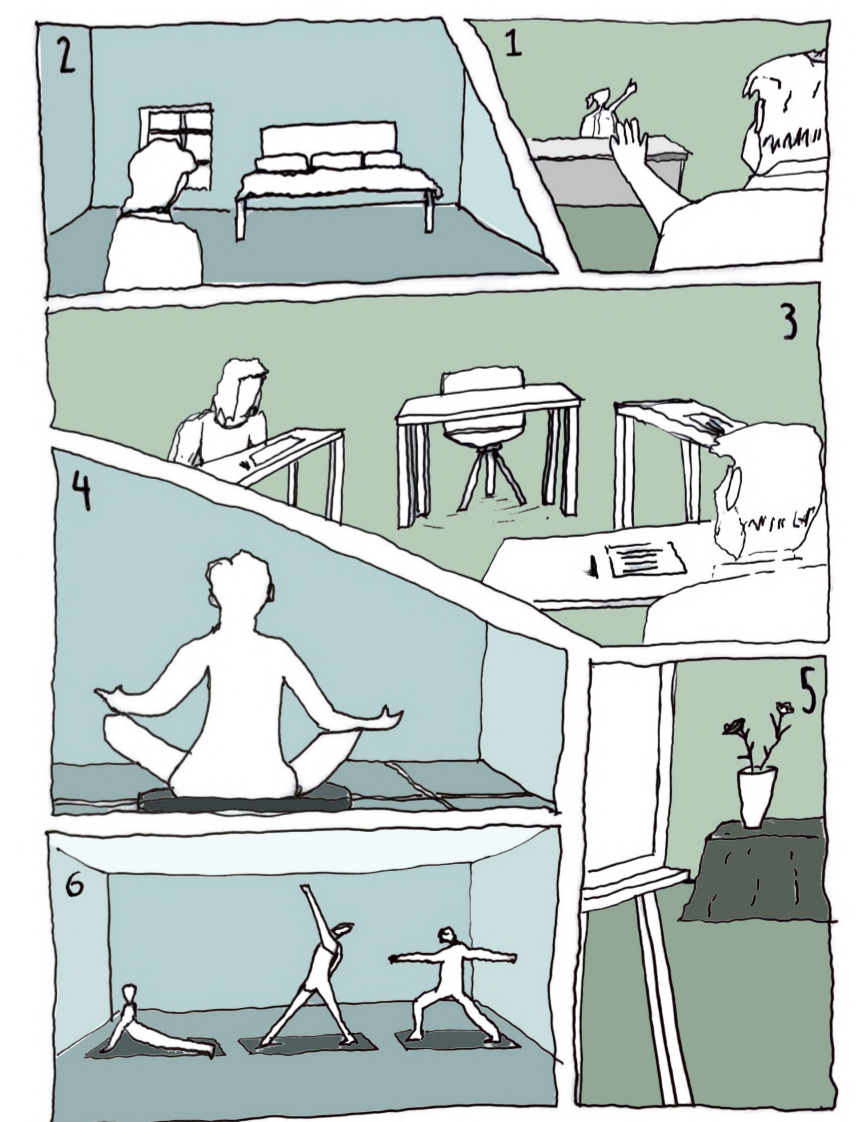
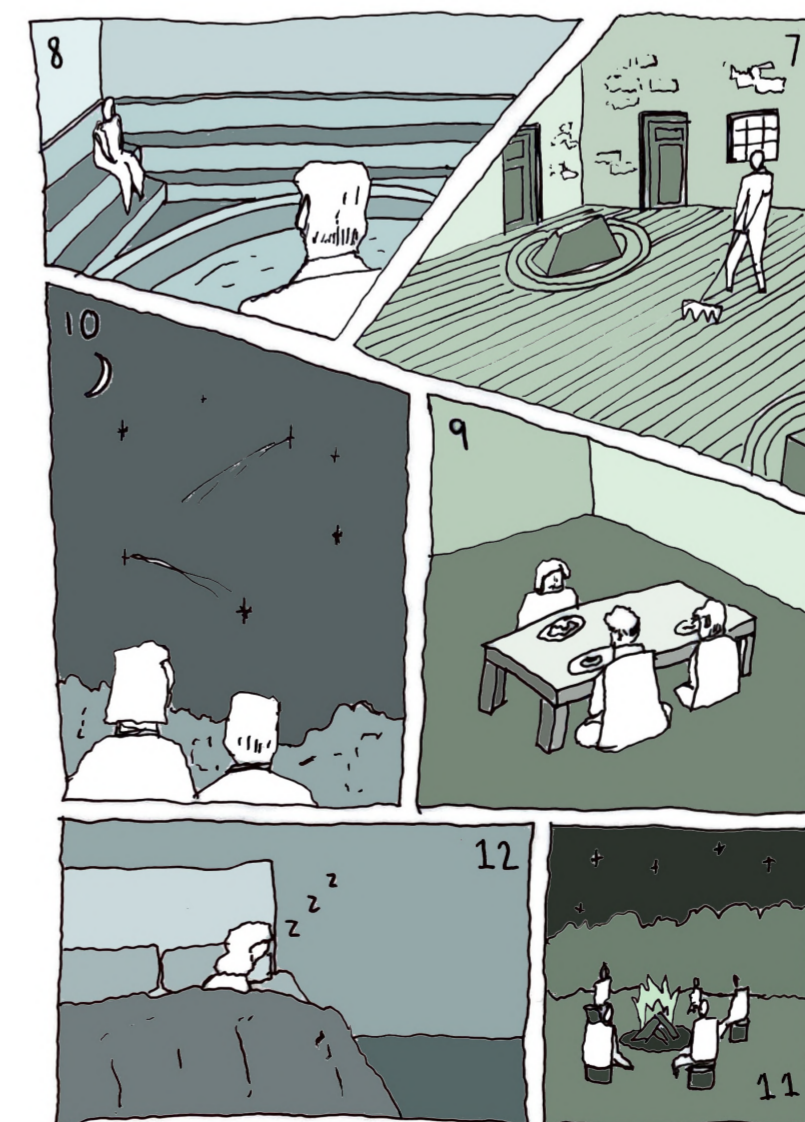
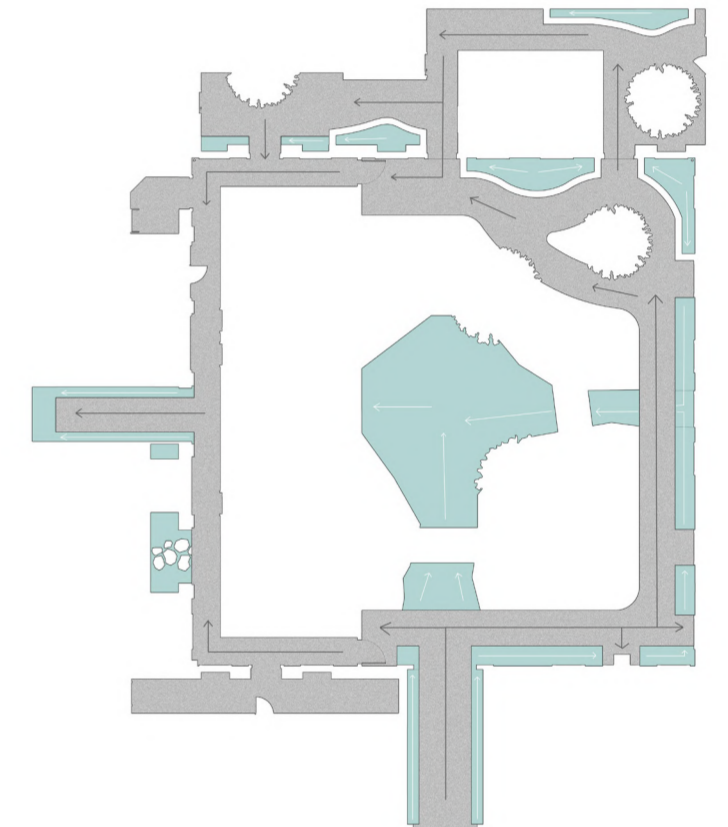
public/private public



private

The building is split up into private and public spaces aimed at different types of users of the space. The public spaces are most of the ground floor and courtyard which is aimed at the Gibside National Trust visitor wandering around the site. The private/public spaces are on the ground floor and new extension and are booked out activity spaces and the sauna/Onsen spa. The private spaces are the bedrooms for the well-being retreat users who are a part of the weeks long experience.

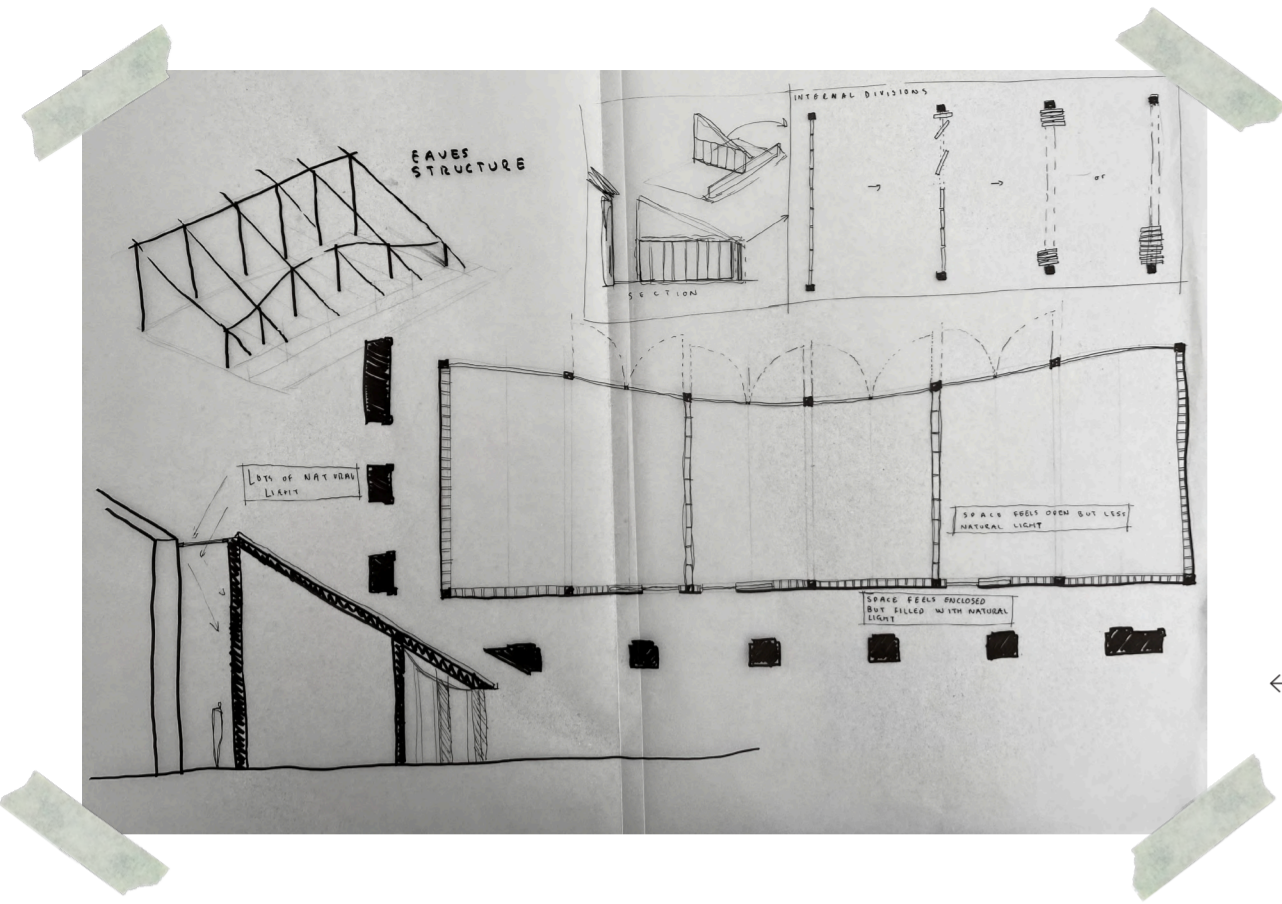
Movement throughout the site is indicated through the direction of the flow of water which is explained in the diagram to the right. Water is part of the 'ma' space and links to the connection with nature.





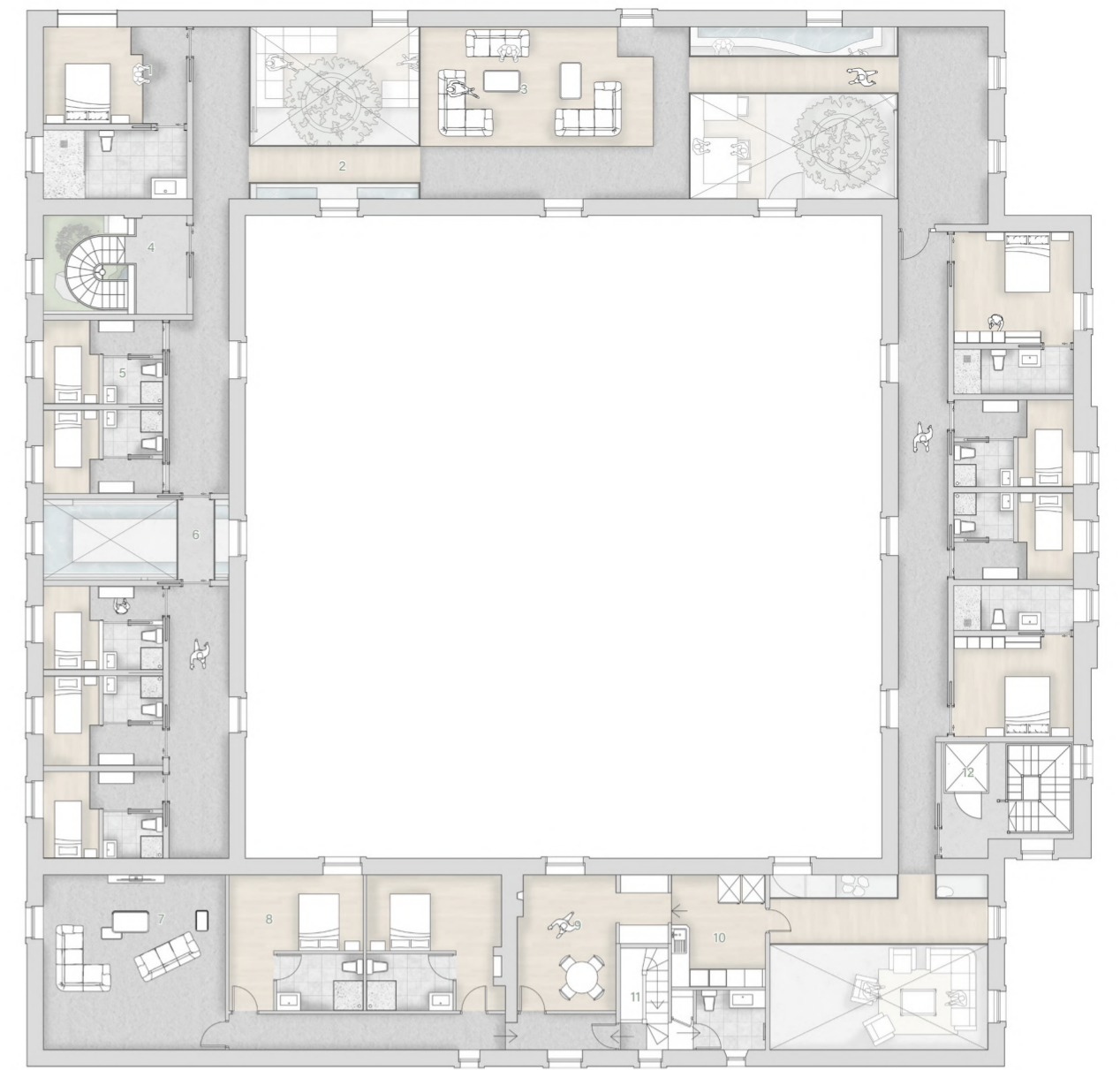
1:50 short section render

technical details



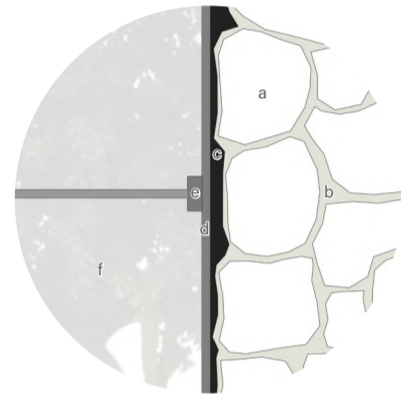
Initial technical structural details of the sloping extension

1:50 long section of key space.



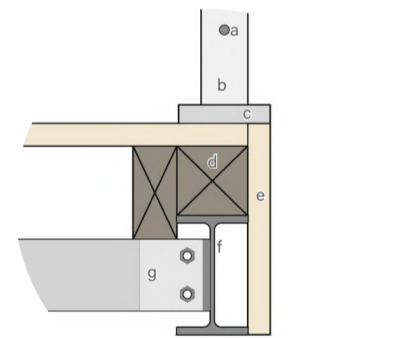
FIRST FLOOR 1:50

SHADOW GAP DETAIL (A) 1:10



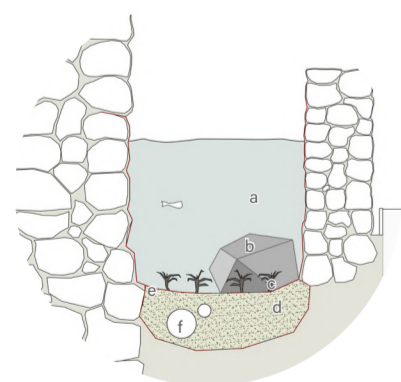
- a - EXISTING RUBBLE STONES
- b - LIME MORTAR COMPOSED WITH WATER AGGREGATE AND LIME
- c - SHADOW GAP CREATED BETWEEN THE STRAIGHT STEEL WINDOW FRAME AND THE RUGGED RUBBLE STONE WALL
- d - GALVANISED STEEL SHEET 7MM AS THE WINDOW FRAME
- e - GALVANISED STEEL TRANSOM WITH SILICONE LINING AROUND GLASS
- f - TEMPERED GLASS WINDOW

WALK-OVER BRIDGE DETAIL (B) 1:5



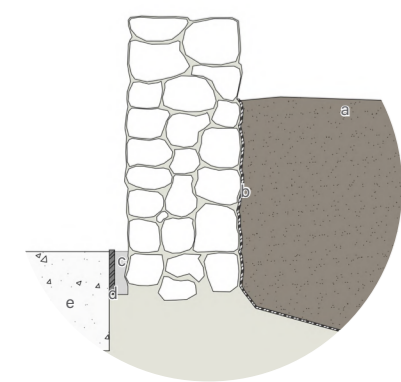
- a - RS PRO WIRE ROPE STRANDING SWG 7/20
- b - SQUARE HOLLOW CAST STEEL 50 x 50 x 3.2
- c - COLLINGWOOD STAINLESS STEEL 304 BRACKET 175 x 175 x 85mm
- d - PRESSURE TREATED PINE TIMBER 100 x 100 x 2400mm
- e - TULIPWOOD POPLAR PLANED FLOORING AND SKIRTING 19 x 200 x 2400mm
- f - UNIVERSAL STEEL BEAM 127 x 76 x 13mm
- g - WIDE FLANGE STEEL BEAM 100 x 50 x 13mm

INTERNAL POND DETAIL (C) 1:10



- a - FILTERED POND WATER FOR INSIDE USE SAFE FOR FISH AND OTHER WATER SPECIES
- b - ROCK HABITAT AND DECORATION FROM GIBSITE GROUNDS EXCAVATION ON SITE
- c - ELODEA DENSA POND PLANTS OXYGENATING PLANT
- d - UBBINK POND SUBSTRATE BASE FLOORING
- e - DURABLE RUBBER POND LINER FLEXIBLE EPDM
- f - WATER PUMP AND FILTRATION SYSTEM WITHIN THE AGGREGATE FLOORING

TREE PLANTER DETAIL (D) 1:5



- a - TURFING TOPSOIL FOR TREE TO BE PLANTED INTO AND INSURE HEALTH
- b - DPM DAMP PROOF MEMBRANE 300MU 4M WIDE POLYTHENE SHEET 1200 GAUGE
- c - SHADOW GAP CREATED BETWEEN THE RUBBLE STONE WALL FOR THE TREE PLANTER AND THE STEEL SHEET.
- d - GALVANISED STEEL SHEET 7mm
- e - BRUSH FINISHED CONCRETE FLOORING SLAB OVER SELF LEVELING SAND



TECHNICAL AXONOMETRIC (C) 1:20

1000mm

1 - EXISTING TIMBER BEAM AND ROOF STRUCTURE

2 - EXISTING RUBBLE STONE WALL

3 - 1200mm STAINLESS STEEL WATERFALL BLADE CASCADE FIXTURE

4 - TEMPERED GLASS WITHIN A GALVANISED STEEL FRAME WITH SILICONE LINING AROUND THE GLASS AS A FIXTURE.

5 - GALVANISED STEEL TRANSOM 15 x 15mm

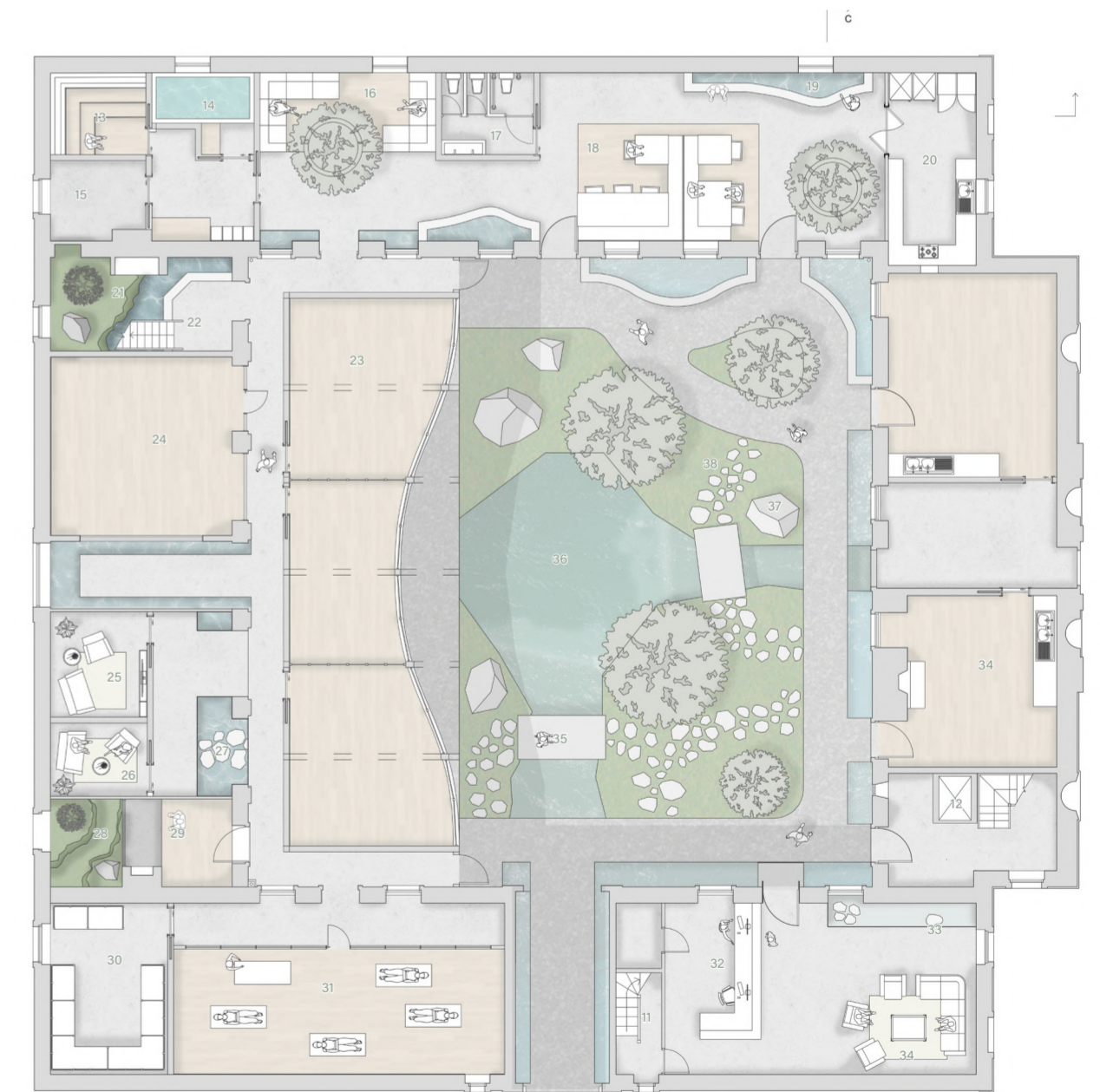
6 - STEEL BALUSTRADE WITH RS PRO WIRE ROPE STRANDING SWG 7/20 AT 500mm CENTERS, WITH A POPULAR TULIPWOOD FLOORING AND HANDRAIL

7 - SYCAMORE MAPLE TREE RESTRICTED HEIGHT WITH THE SIZE OF PLANTER

8 - TREE PLANTER WHICH IS ALSO ACTS AS BENCH SEATING MADE FROM THE RUBBLE STONE EXCAVATION FROM NEW WINDOWS

9 - BRUSHED CONCRETE FLOORING SLAB

10 - EXISTING WINDOWS



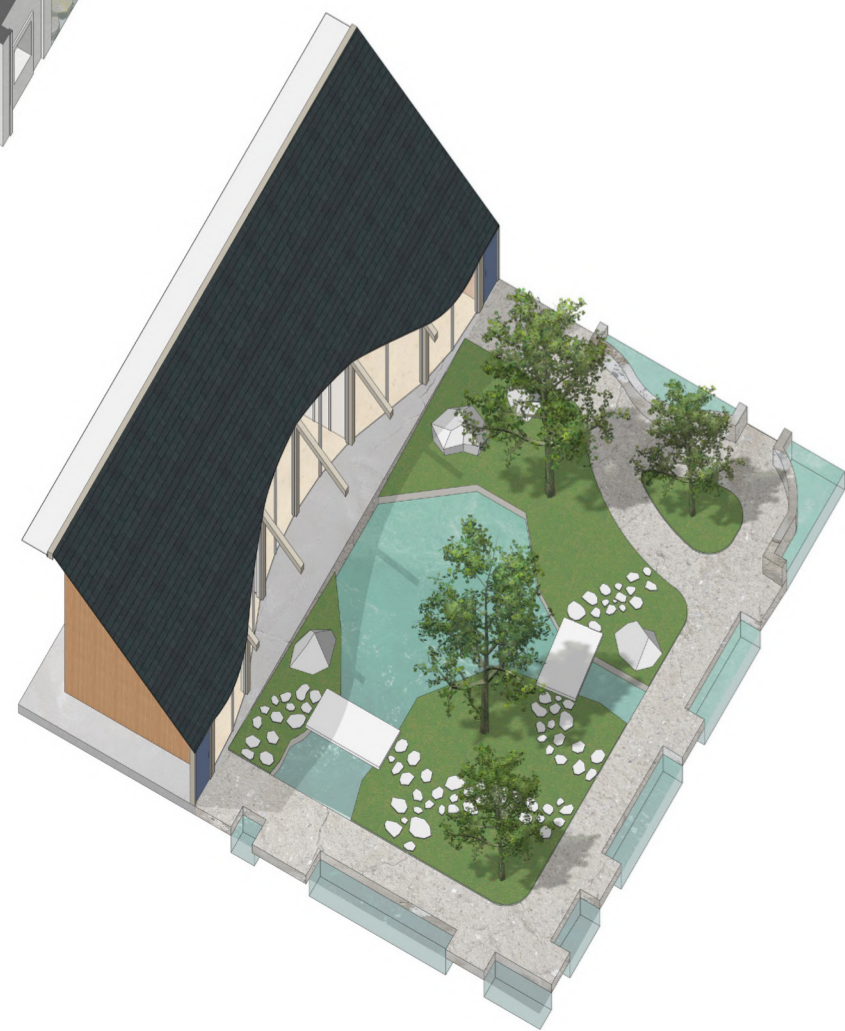
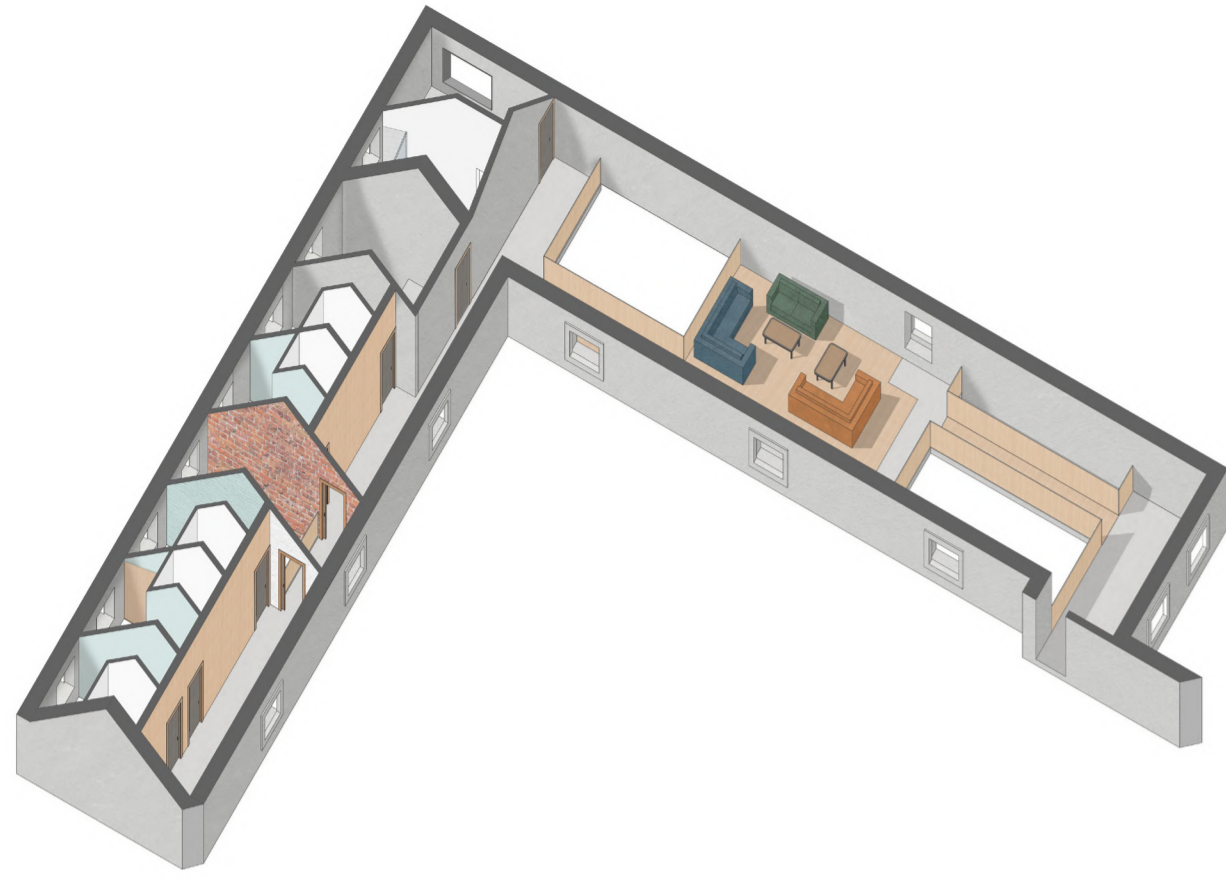
GROUND FLOOR 1:50

- 1 - Large two person en-suite room
- 2 - 'ma' walkway bridge
- 3 - Lounge seating area
- 4 - Existing circular metal staircase
- 5 - Small one person en-suite room
- 6 - Walkway over first floor with sliding doors
- 7 - STAFF lounge area
- 8 - STAFF bedroom with en-suite
- 9 - STAFF dining area
- 10 - STAFF kitchen
- 11 - STAFF stairs behind reception desk
- 12 - Existing lift
- 13 - Sauna
- 14 - Onsen bath
- 15 - Plant room

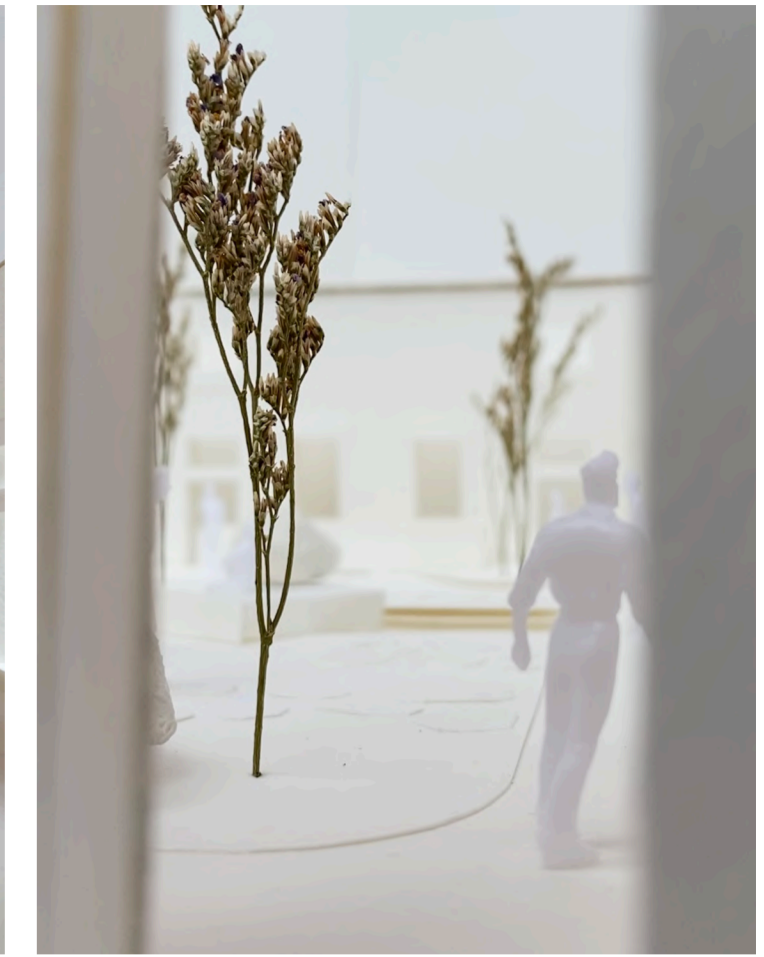
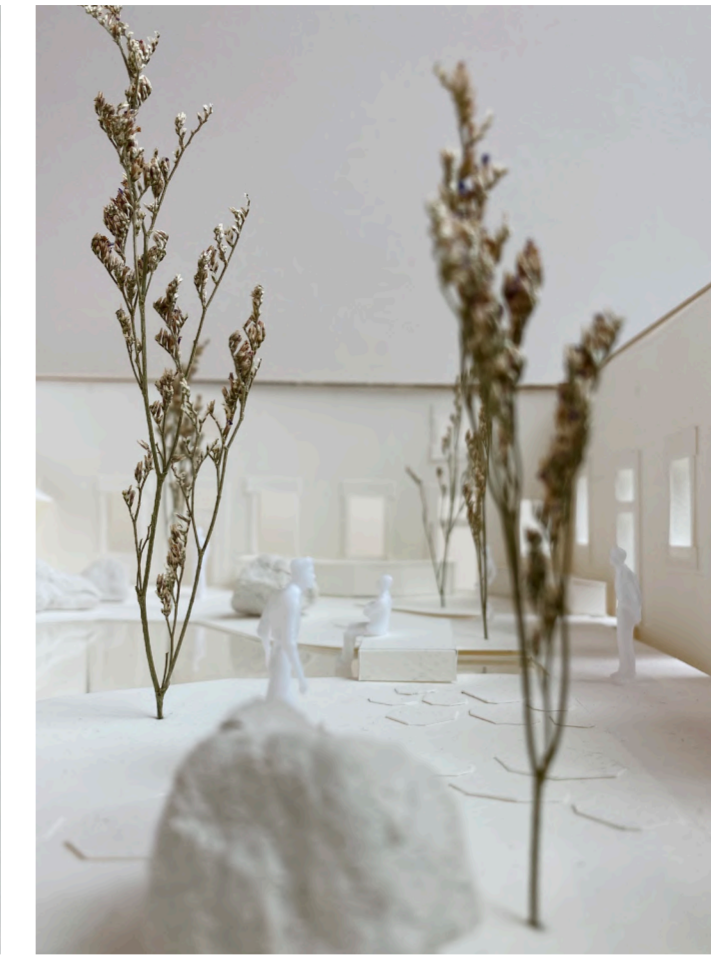
- 16 - Ground floor lounge area
- 17 - Toilets
- 18 - Dining area for guests on retreat
- 19 - Pond/waterfall
- 20 - Kitchen
- 21 - 'ma' nature point with tree, rocks and moss
- 22 - Existing staircase
- 23 - New sloping extension activity rooms
- 24 - Existing room activity room with mirror wall
- 25 - Breakout room
- 26 - Therapy room
- 27 - Stepping stones over pond
- 28 - 'ma' inside outside space
- 29 - Meditation space
- 30 - Storage room

- 31 - Large Activity room with mirror wall
- 32 - Reception desk
- 33 - Stepping stone to interact with waterfall
- 34 - Lounge/waiting space
- 35 - Concrete bridges
- 36 - Pond based off of octagonal pond
- 37 - Large shintai rocks
- 38 - Stepping stones which influence rhythm of walking pace

visualisation



axonometric diagram

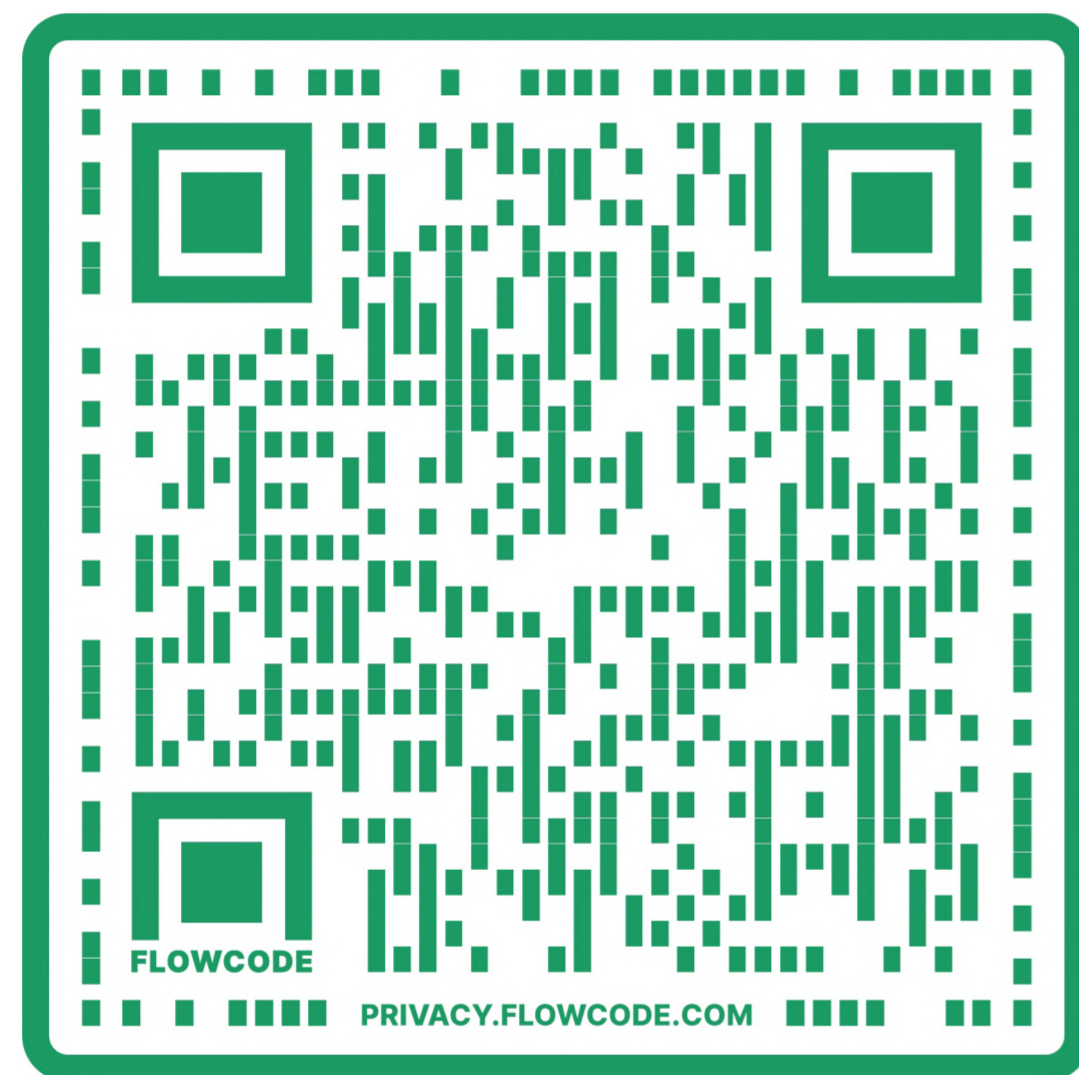


origami style paper model



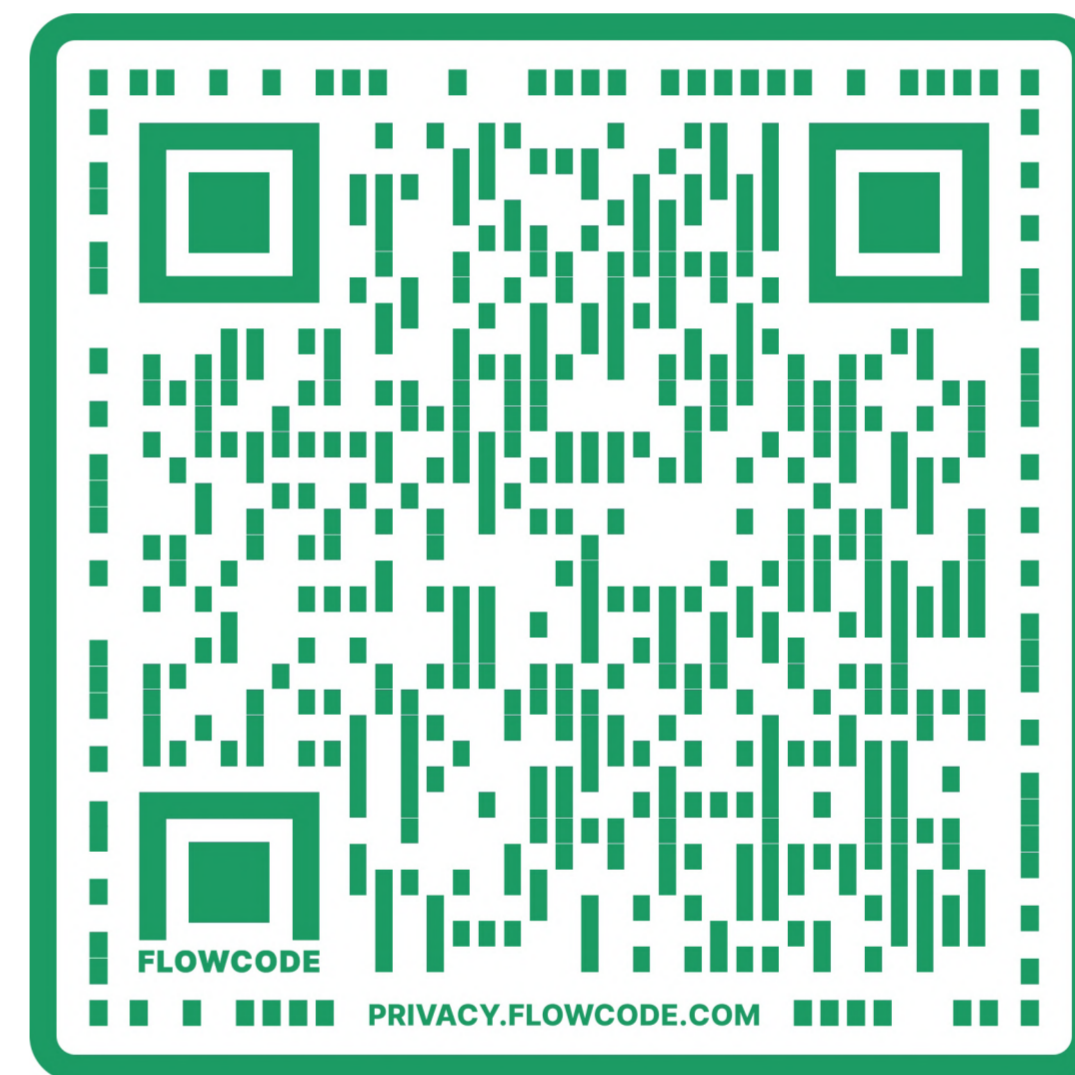
3D rendered perspectives

3D flythrough



flowcode.com/p/jlD6A2sec?fc=0

'ma' - sense of place essay



flowcode.com/p/jlD50Gc3O?fc=0