



Papillon

The Old Stables at Gibside, a grade II* listed building, will be gently converted into the North East's first fully comprehensive butterfly breeding, conservation and research centre; by the community, for the community, providing a vital solution to one of the UK's most quiet problems. A wonderfully wholesome experience, Papillon; The Butterfly Effect will educate, spark joy and inspire all ages and backgrounds, united towards achieving our goals of saving native butterflies.

Take a stroll through butterfly meadow, uncovering hidden curiosities alongside new, fluttering friends. Watch as funny little caterpillars tuck themselves away into tiny, blanket like chrysalis', emerging days later as beautiful butterflies. Help regenerate the ecosystem through community led floriculture programmes, taking seeds home from gibside flowers to plant your own Pappillon garden, and watch the butterfly effect unfold.

The Butterfly Effect at Gibside will encompass a state of the art lepidopterarium, breeding centre and butterfly data analysis hub for the North of England, coupled with a cafe, educational zone and small shop. To the rear of the property, a small scale flower farm will be operational, enabling gibside seeds to act as change - inspiring catalysts throughout our local communities.

site plan & context



Proudly situated on the river, just 15 minutes to the south-west of Newcastle, The Old Stables at Gibside boast a unique and opportunistic position within the North East.

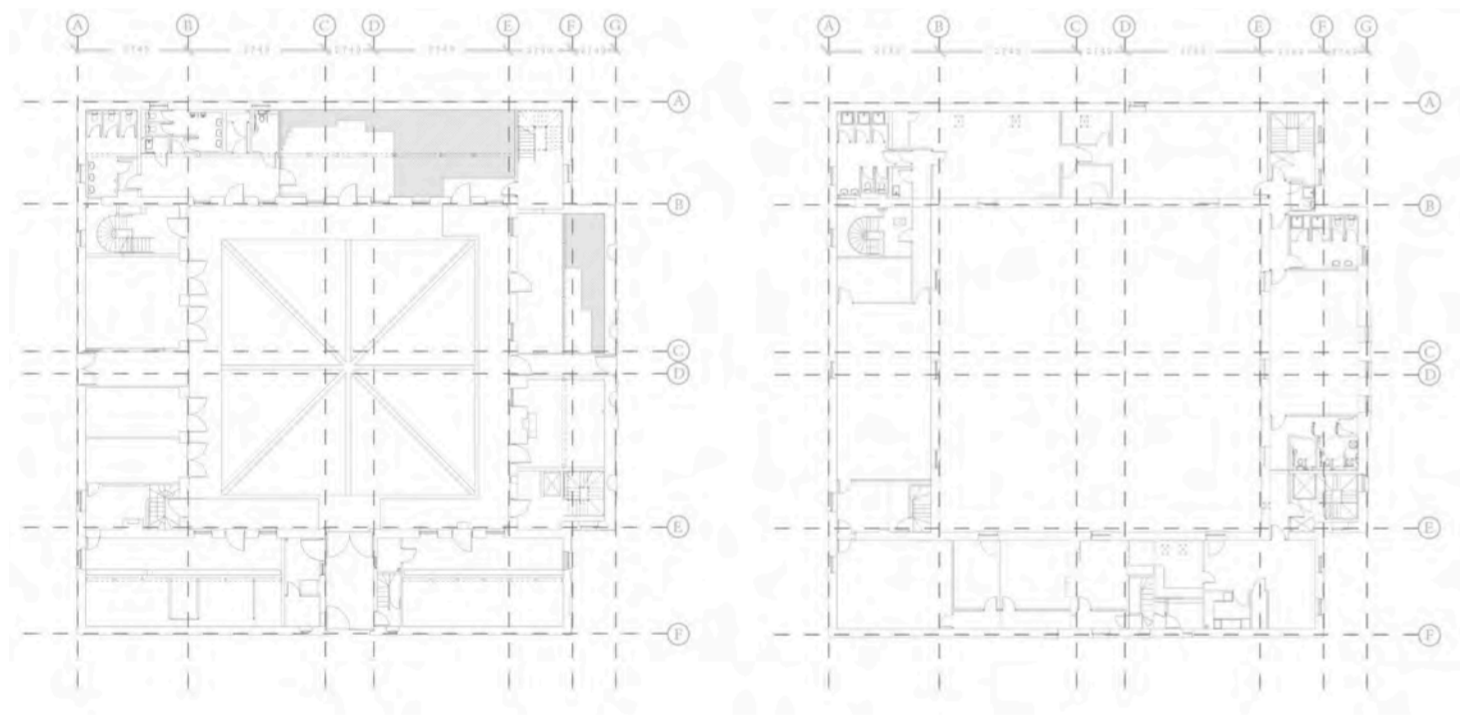
building response model



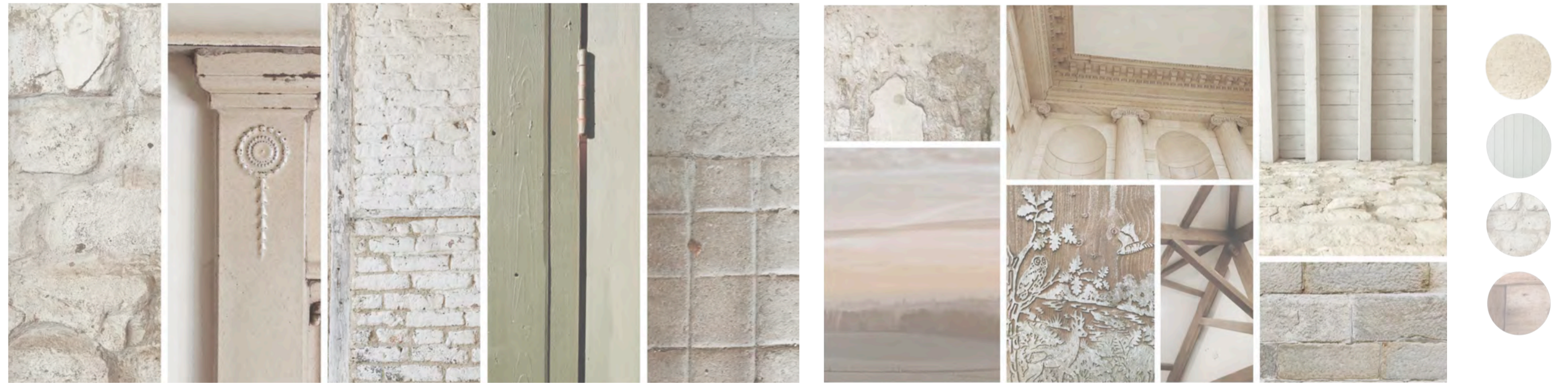
This building model was developed to demonstrate the personal narrative I created after visiting the old stables site, which can be understood as follows:

'The fabric of place is not in fact made from bricks and mortar, but from the lives and stories that have come to define it'.

existing plans



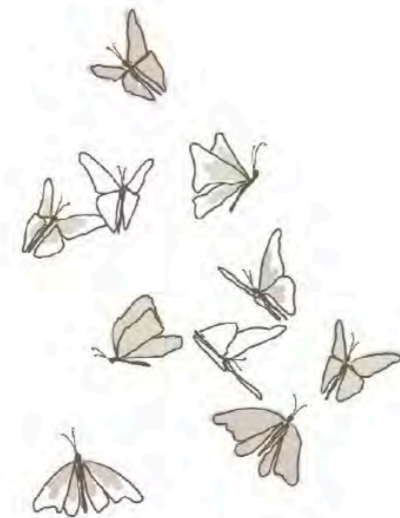
photography



illustrated thoughts



Acrylic observational painting representing the stonework of the Old stables and the idea of butterflies using it to bask in the sun.



'In order to re-vision something to it's fullest potential, one must first observe it at it's very best'.



Series of natural collages made from natural resources collected around gibside



brief investigation: developing a narrative

Butterfly Conservation Society Current Data

'We are facing a man made disaster on a global scale. Butterflies and moths are in worrying decline'.

Since 1976, butterflies have declined by 76%.

Since 1968, Larger moths have declined by 33%.

41% of all UK species have declined since 1970.

The lappet moth has had a 98% decline in abundance and 61% in distribution.

68% of butterflies that rely on a specific habitat need conservation help.

Butterfly Conservation Society Goals

Halve the numbers of the UK's threatened species of butterflies and moths

Improve the condition of 100 of the most important landscapes for butterflies and moths

Transform 100,000 wild spaces in the UK for people, butterflies and moths

Values

To Deliver Excellence, To be Passionate

To Inspire Others, To be Collaborative



2021 - 2026 Conservation Plan Initiatives

BCS: Recover butterflies and moths
NT: Nature and the historic environment are under threat and urgently need more care

BE Solution: A Butterfly Breeding & Release Centre

BCS: Connect people to nature
NT: We love people and places

BE Solution: Introduce the ability to buy seeds, directly from the flower garden, and replicate the gibside butterfly garden at home

BCS: Unite for wildlife
NT: We are collaborative, welcome and value difference

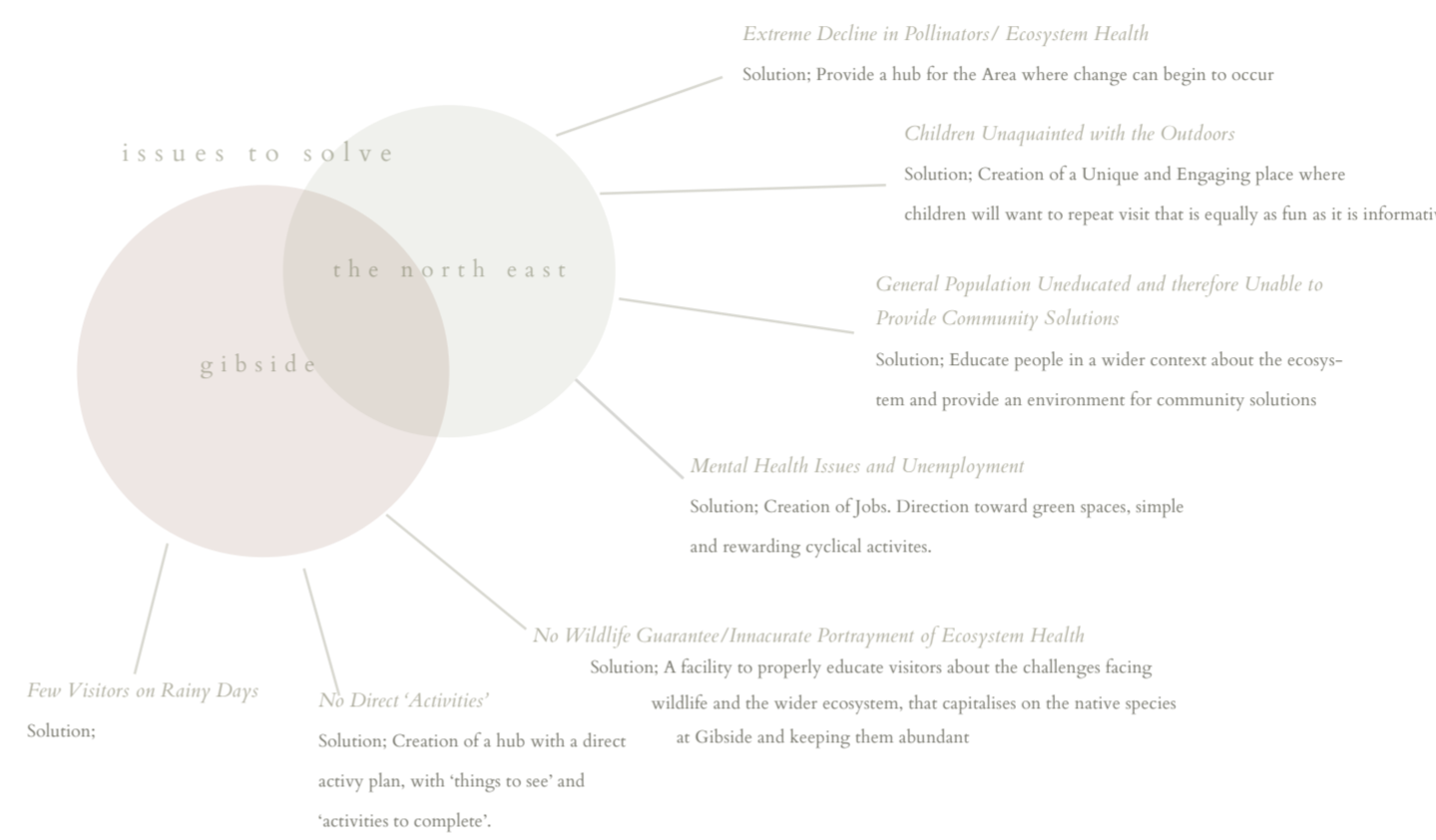
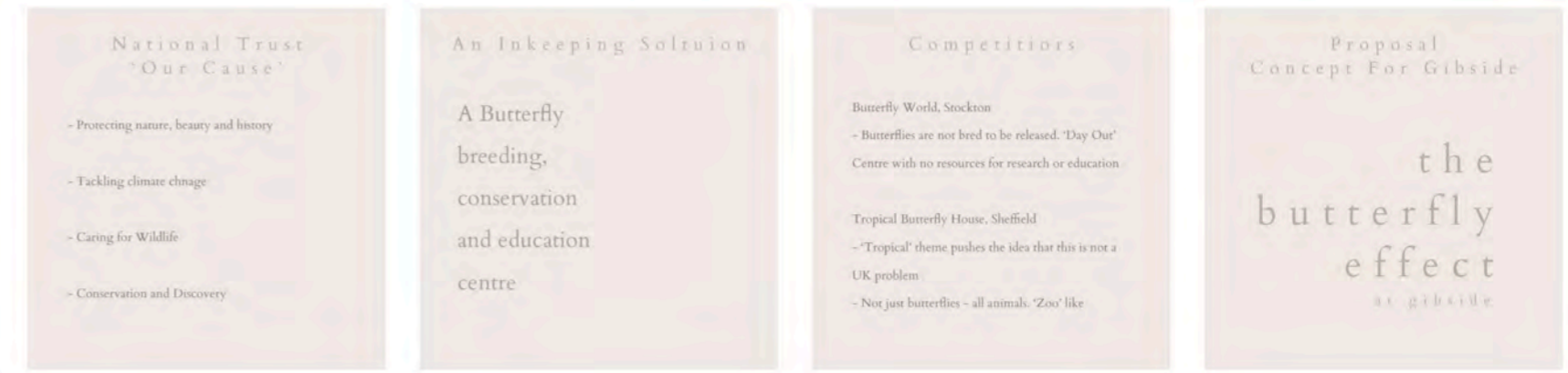
BE Solution: To bring together all age groups at the garden, where different people can learn from one another in order to grow and learn

BCS: Tackle threats to species
NT: We protect and care for places so that nature can thrive

BE Solution: A data collection, research and analysis section within the centre for the monitoring and planning of species reintroduction

Manage land sustainably
NT: We Act Responsibly and Sustainably

BE Solution: To use sustainable materials and act in a conscious manner

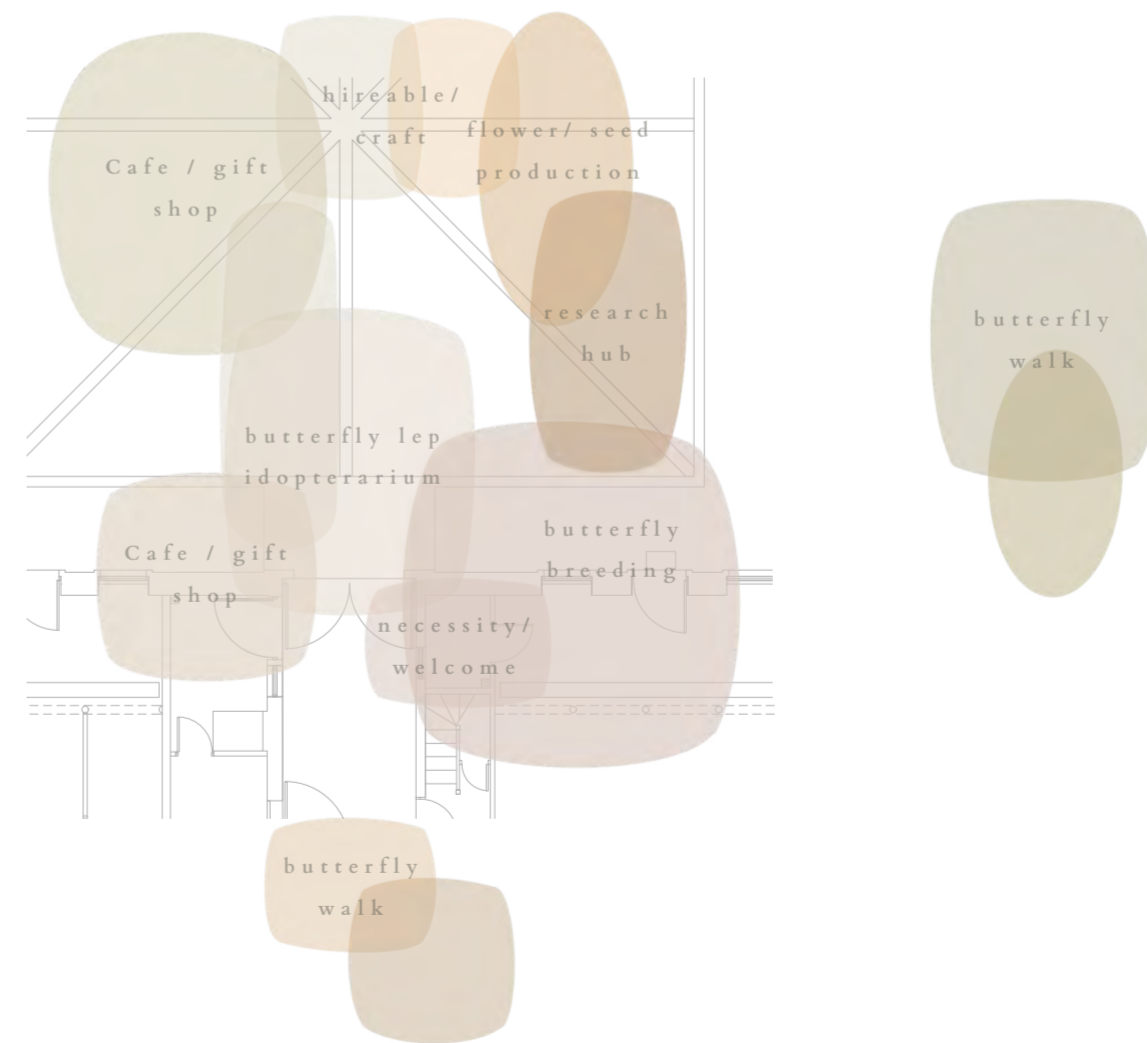
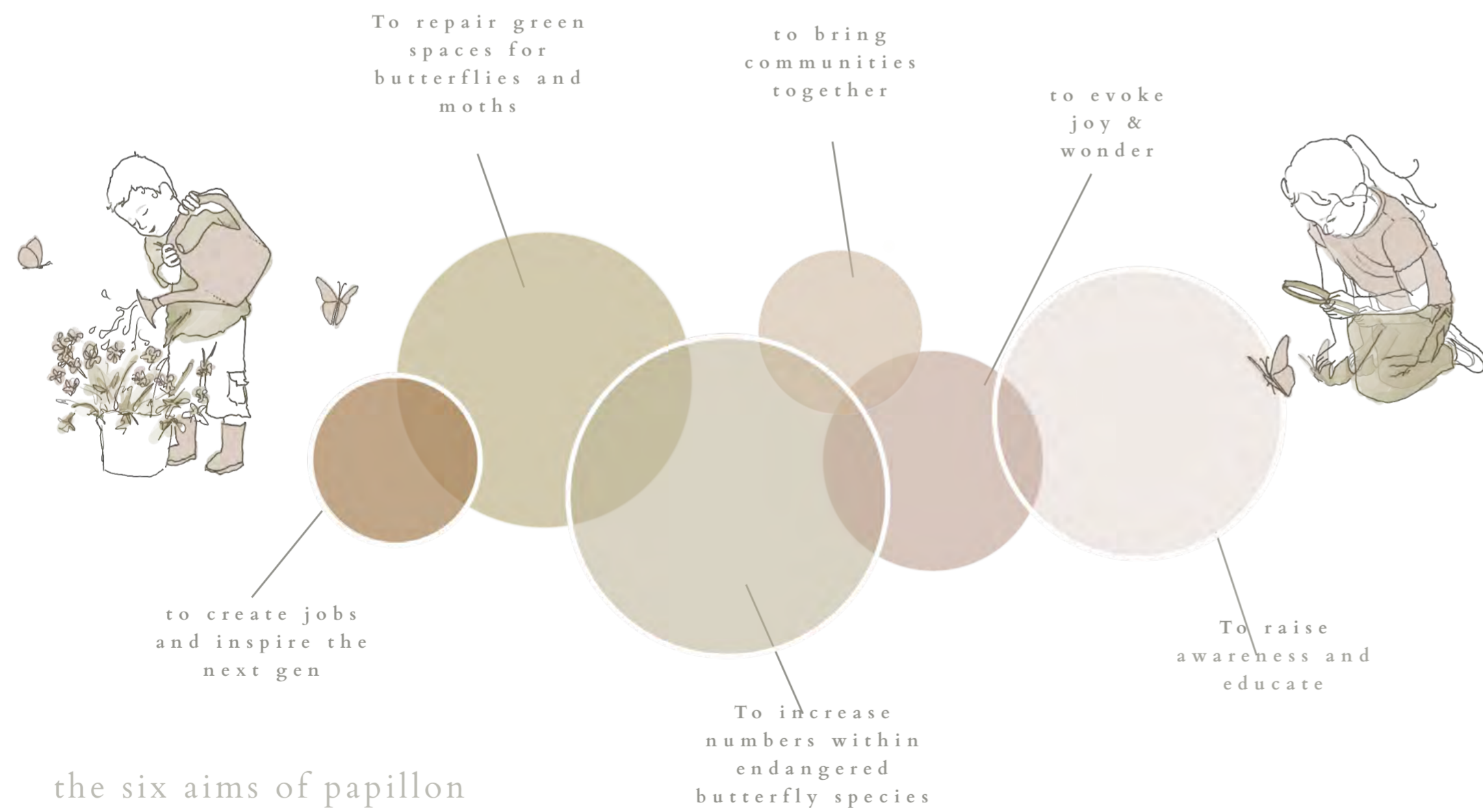


historical relevance

Mary Eleanor grew up surrounded by nature and reaped the rewards, becoming a strong and confident trailblazer



Gibside has been defined by plants and nature for centuries, and if the ecosystem breaks down, the legacy cannot continue.



To Create Jobs and Inspire the Next Generation of Conservationists

- Butterfly Care Centre
- Science Hub for data collection and analysis
- Gardening Opportunities
- Workshops for all ages



To Repair Green Spaces for Butterflies and Moths

- Butterfly meadow walks leading visitors to hidden curiosities
- Community gardening incentives for schools and homes to increase the distribution of butterfly suitable spaces



To Increase Numbers in Endangered Butterflies and Moths

- Butterfly Breeding and release programme; immersive experience
- Increased monitoring within the science hub & community programmes such as the big butterfly counts
- Increased stratagising and innovative educational experiences



To Bring Communities Together

- Community events and workshops for all ages
- Butterfly cafe for socialisation and unexpected connections
- Monthly butterfly release events



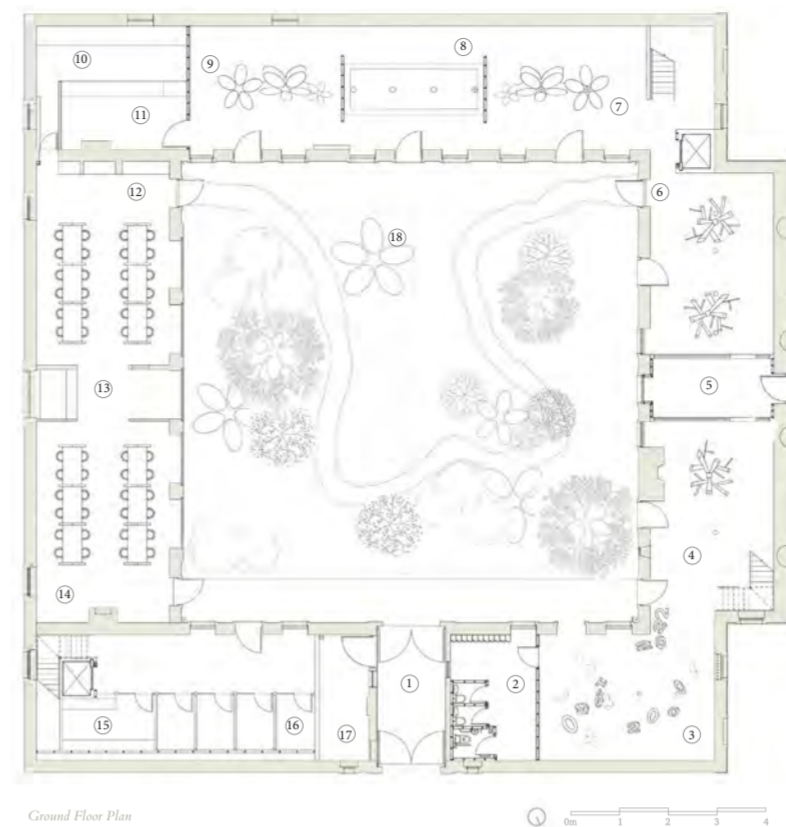
To Evoke Joy and Wonder, Naturally

- Performative butterfly release once a month
- Colourful light manipulation for a natural display
- 'Back to basics' approach; 'it's the simple things'

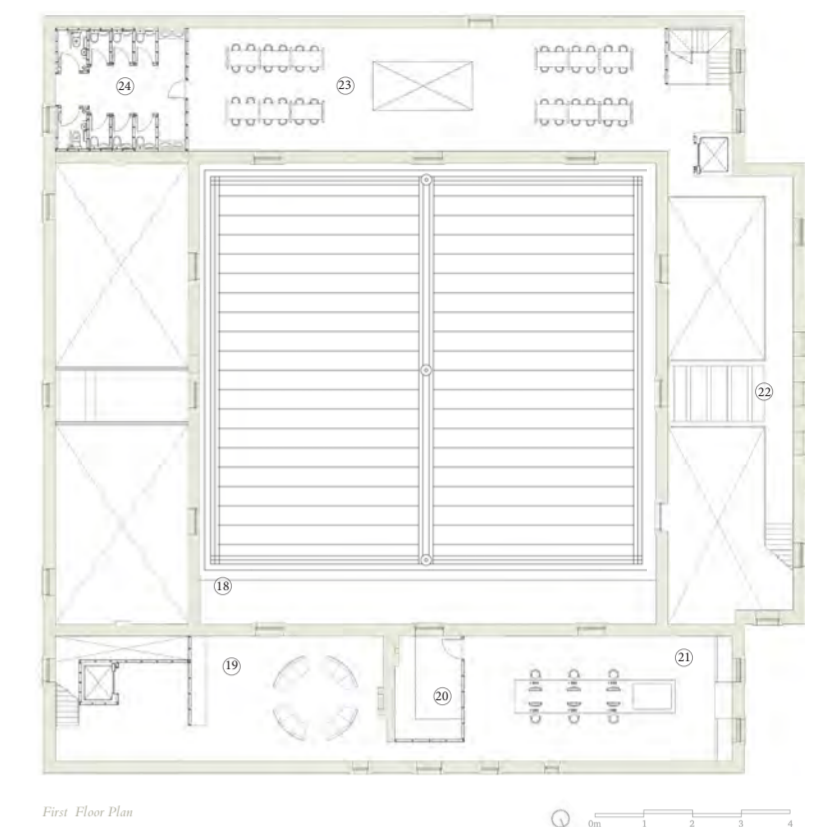


To raise Awareness and Educate

- School trips with a focus on learning through doing; gardening, being part of the life cycle, crafts and experience at forefront
- Captivating experience that can be replicated on a school/home level



Ground Floor Plan



First Floor Plan

functional analysis

floor plans

sectional perspective

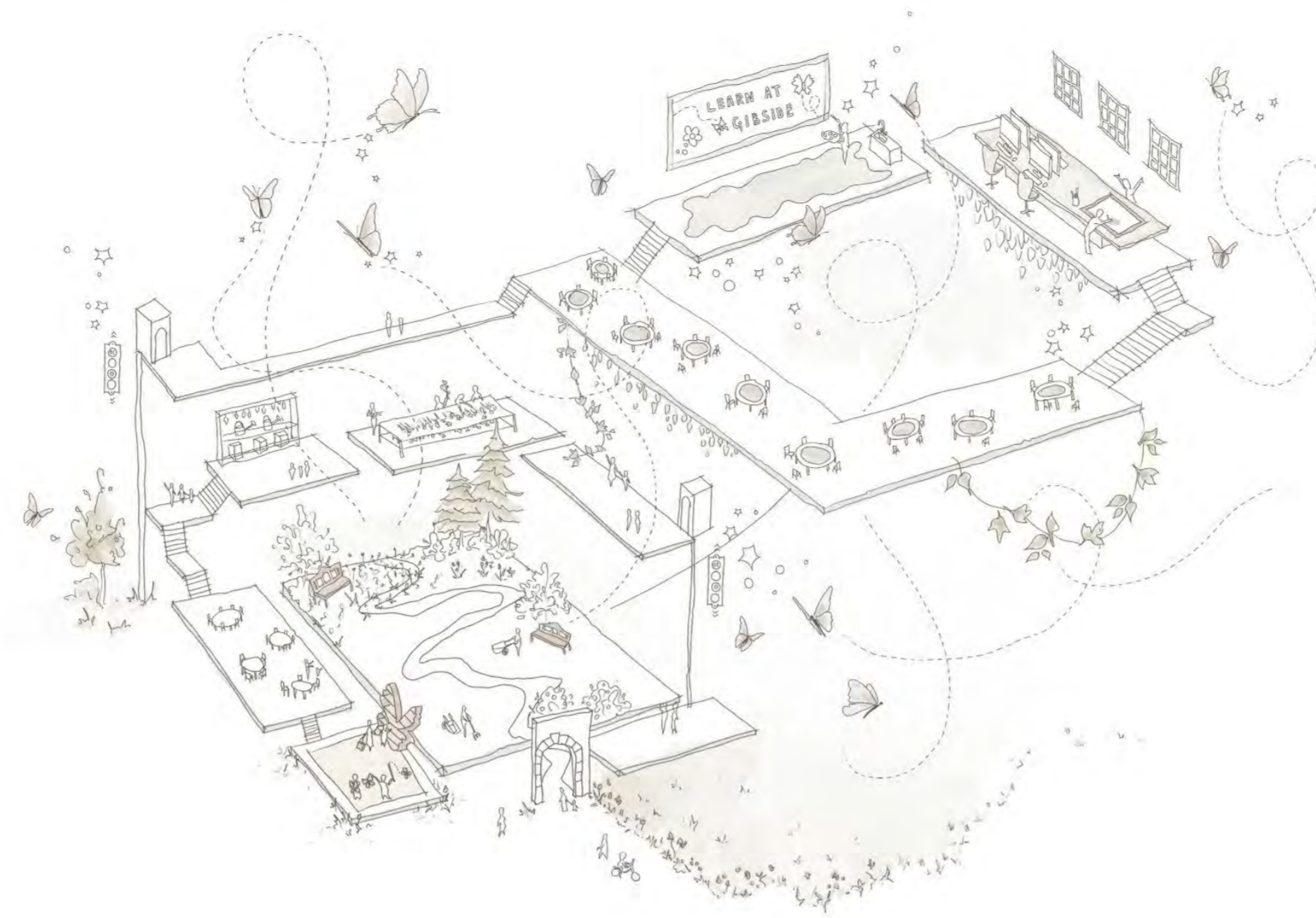


key plans

- 1 Entrance
- 2 WC & Lockers
- 3 Context Exhibit
- 4 Caterpillar Breeding Centre
- 5 Crystals Zone
- 6 Exit to Lepidopterarium
- 7 Flower Farm - Flower Collection and Sort (Zone 1)
- 8 Flower Farm - Flower Drying Table (Zone 2)
- 9 Flower Farm - Seed Shaking and Sorting (Zone 3)
- 10 Seed Packing
- 11 Outdoor Equipment Store
- 12 Cafe Food Display/ Collection
- 13 Tills
- 14 Extra Seating Zone
- 15 Staff Filing Store
- 16 Focus Booths
- 17 Plant Room
- 18 Victorian Greenhouse Style Roof
- 19 Meeting Zone
- 20 Staff Kitchen
- 21 Research & Analysis Hub
- 22 View to Crystals Zone
- 23 School Centre with Lightwell
- 24 WC

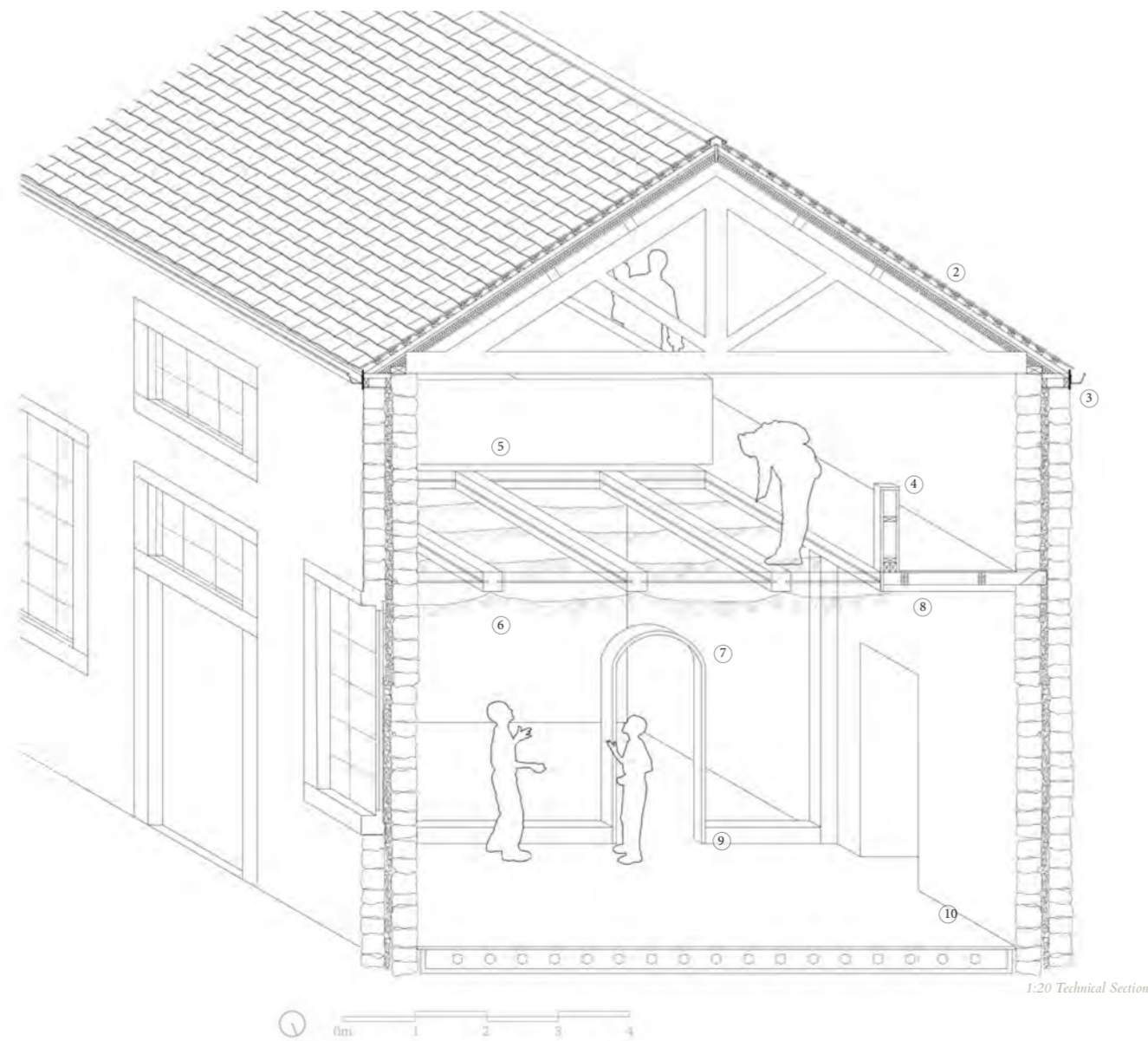


quiet pavillion on butterfly walk



lepidopterarium

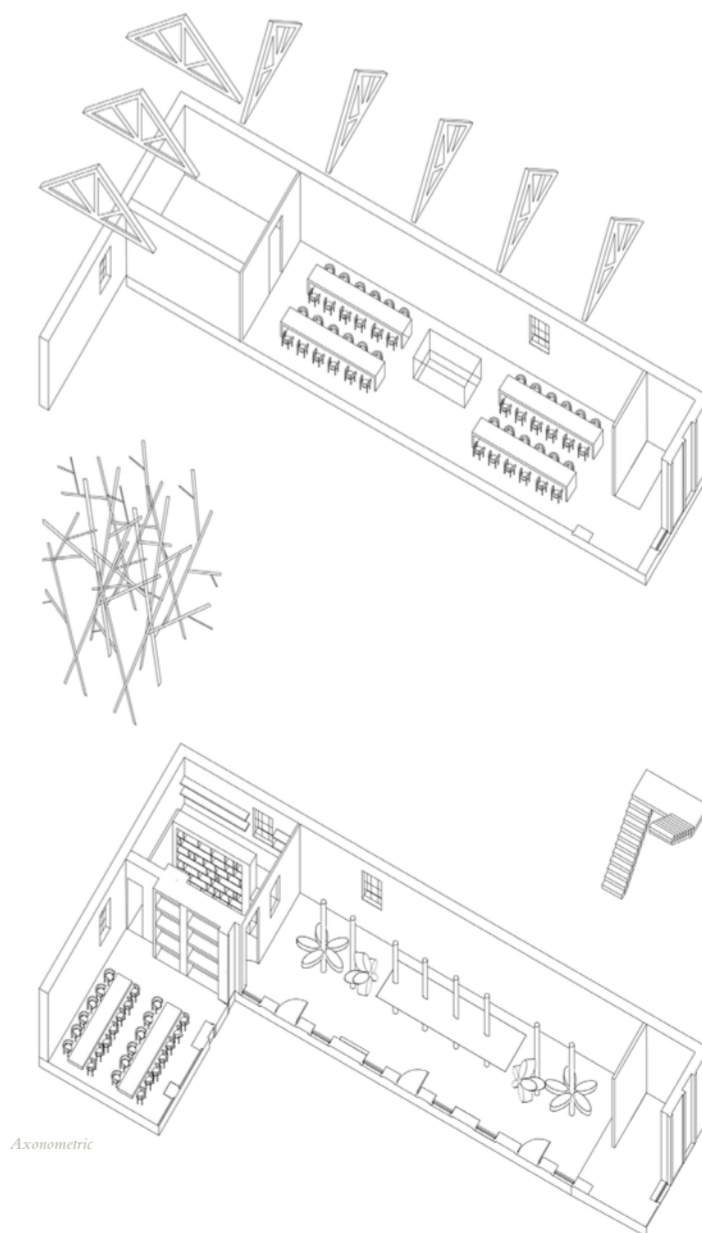
Butterfly walk will take visitors on a journey of discovery around gibside, with floral themed pavillions marking special points along the way, where butterflies can be seen. The pavillions have been designed to cast intricate shadows, like light shows, over the grasses, leading visitors to look closer to see what they can spot. Specially designed flat plates on the pavillions provide the perfect place for butterflies to rest in the sun, whilst the gaps provide the perfect environment for climbing roses.



key

1:20 technical section

- 1 Entrance
- 2 WC & Lockers
- 3 Context Exhibit
- 4 Caterpillar Breeding Centre
- 5 Crysalis Zone
- 6 Exit to Lepidopterarium
- 7 Flower Farm - Flower Collection and Sort (Zone 1)
- 8 Flower Farm - Flower Drying Table (Zone 2)
- 9 Flower Farm - Seed Shaking and Sorting (Zone 3)
- 10 Seed Packing
- 11 Outdoor Equipment Store
- 12 Cafe Food Display/ Collection
- 13 Tills
- 14 Extra Seating Zone
- 15 Staff Filing Store
- 16 Focus Booths
- 17 Plant Room
- 18 Victorian Greenhouse Style Roof
- 19 Meeting Zone
- 20 Staff Kitchen
- 21 Research & Analysis Hub
- 22 View to Crysalis Zone
- 23 School Centre with Lightwell



Home to papillon's unique floriculture programme, visitors of all ages will be able to participate in the selection, growing, harvesting and de-seeding of flowers at the Old Stables. they will be able to plant these seeds at home in their own gardens, making their own ecosystems and encouraging the butterfly population to flourish.

The lepidopterarium also features a glass roof, where butterfly release events will be held monthly, as not only a spectacle but as a means of increasing species numbers around gibside.