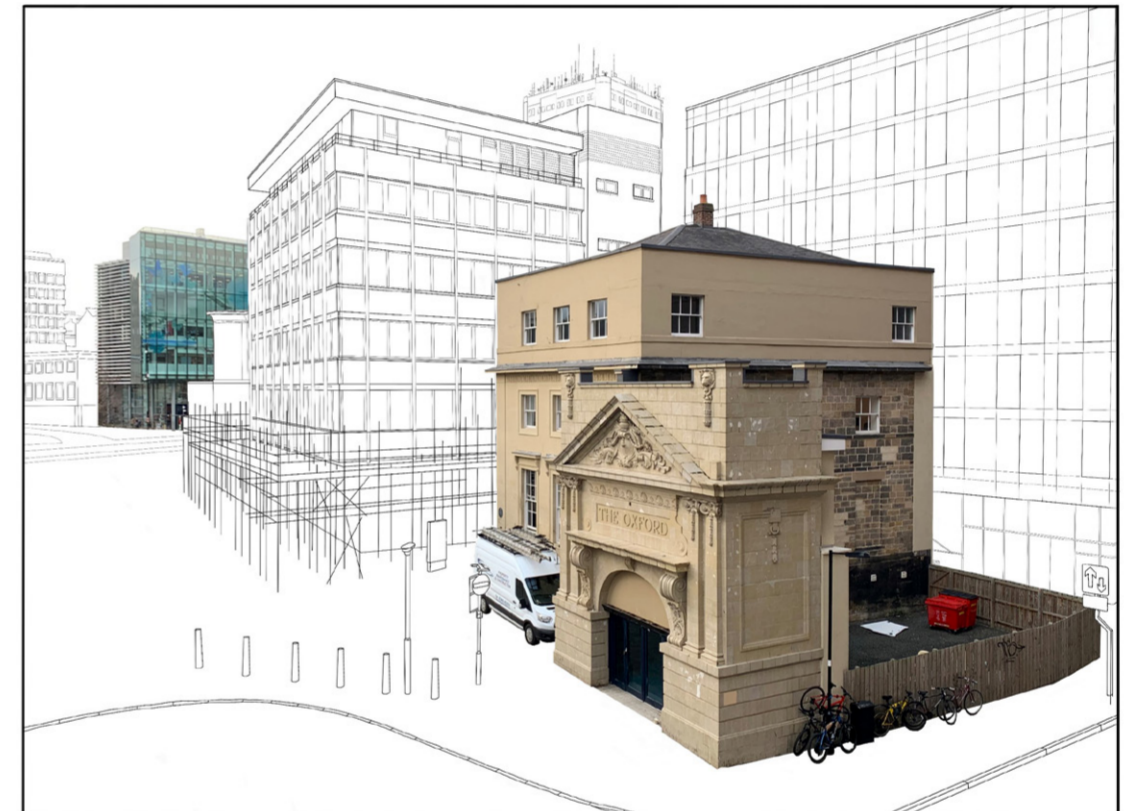


The Spoken Archives



The Spoken Archives is a branch of the Newcastle Central Library allowing for their online archives to be accessed by visitors to learn, listen or for any events they may be attending. The motivation behind the spoken archives is to provide the space for talks and lectures to take place in the Speaking Space along with events to be recorded and archived in video form. This would provide a new aspect to the Newcastle Central Library archives allowing for information to be more accessible in video and audio forms.



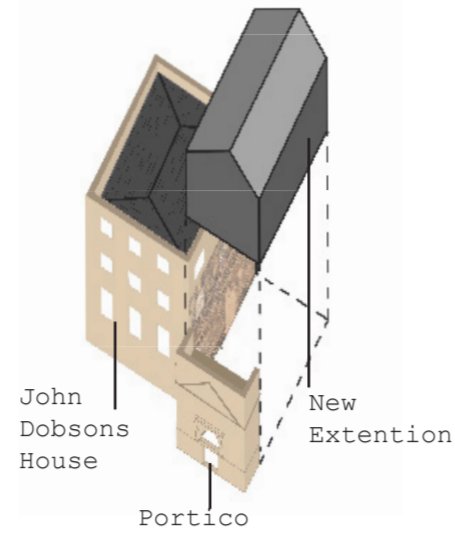
Site Plan



KEY

- Roads
- Pavement / Other
- Pedestrian Walking
- Newcastle Central Library
- Site
- Blue Carpet

The John Donsons House site is grade II* listed with the north, south and west facade being predominantly listed. A portion of the east facade is unlisted, between the newly added extension and the house. There is also listed plaster work allowing for minimal opportunity for any large openings within John Dobsons House.



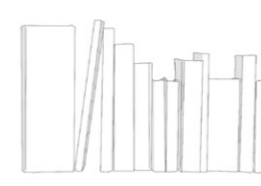
1- Speaking Space



2- Cafe



3- Bookshop



4- Exhibition Space



5- Solo Archive Access



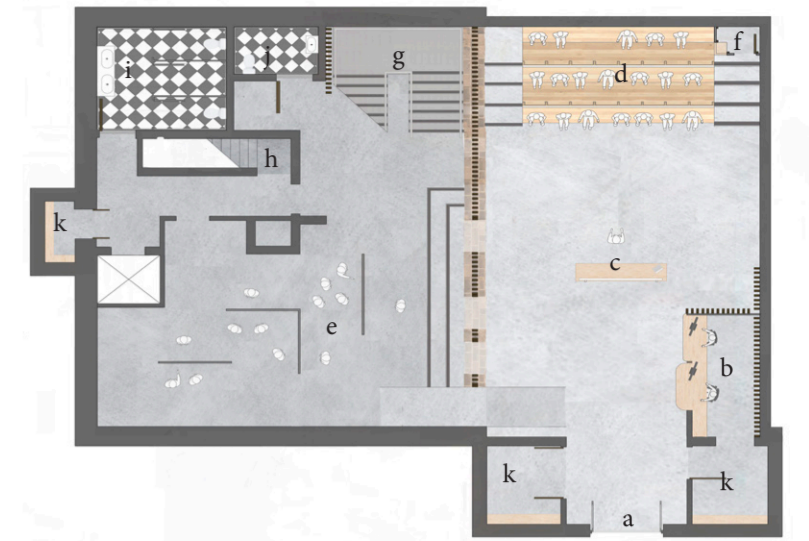
6- Lounge Archive Access



7- Group Archive Access



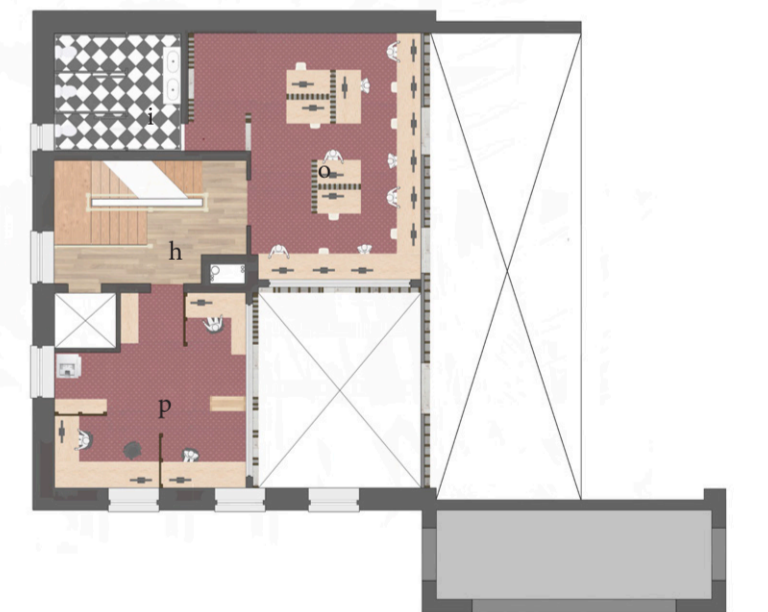
Ground Floor Plan



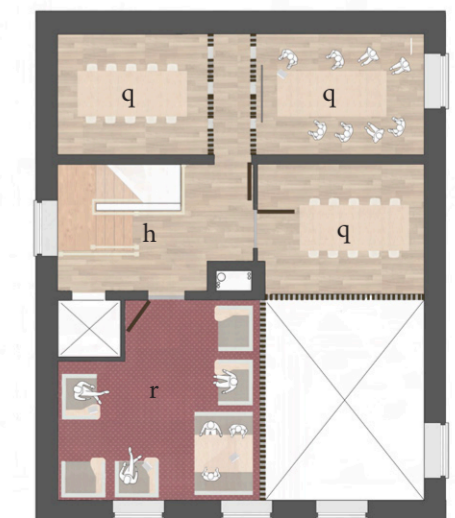
First Floor Plan



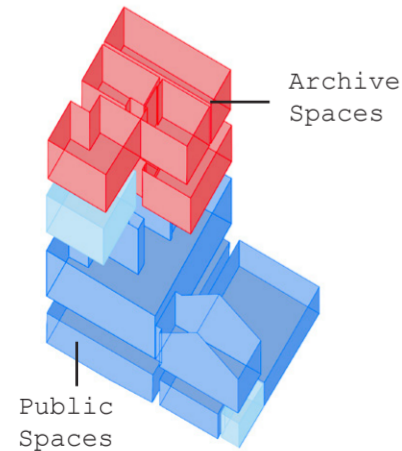
Second Floor Plan



Third Floor Plan



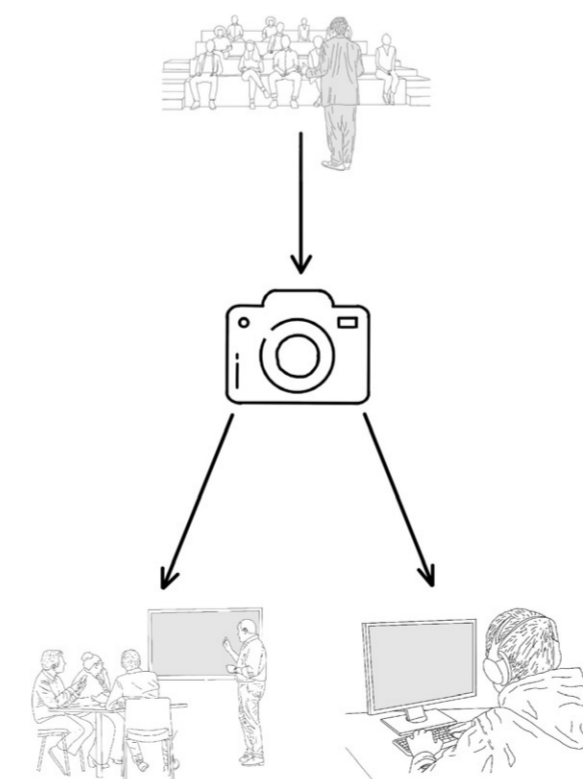
Floor Layout



The layout below shows the spaces in which lectures, talks and exhibitions take place on the ground and first floors. Meanwhile on the second and third floor visitors can come to the archives and research whatever interests them, along with taking part in group projects using the archives. The building layout shown below is inspired by the floor layout used in the Newcastle Central Library.



Archiving Process



Key

- a- Entrance
- b- Reception
- c- Speaking Point
- d- Seating for Talks
- e- Exhibition Space
- f- Recording Room
- g- New Staircase
- h- Existing Staircase
- i- Toilets
- j- Disabled Toilet
- k- Storage
- l- Staff Room
- m- Cafe
- n- Book Shop
- o- Solo Research Space
- p- Office Space
- q- Bookable class/group rooms
- r- Relaxed Research Space

3rd floor	
2nd floor	
1st floor	
Ground floor	

Key

- Staff Areas
- Archive Spaces
- Online archiving rooms
- Group working spaces
- Public Spaces
- Bookshop
- Cafe
- Speaking space
- Toilets
- Exhibition

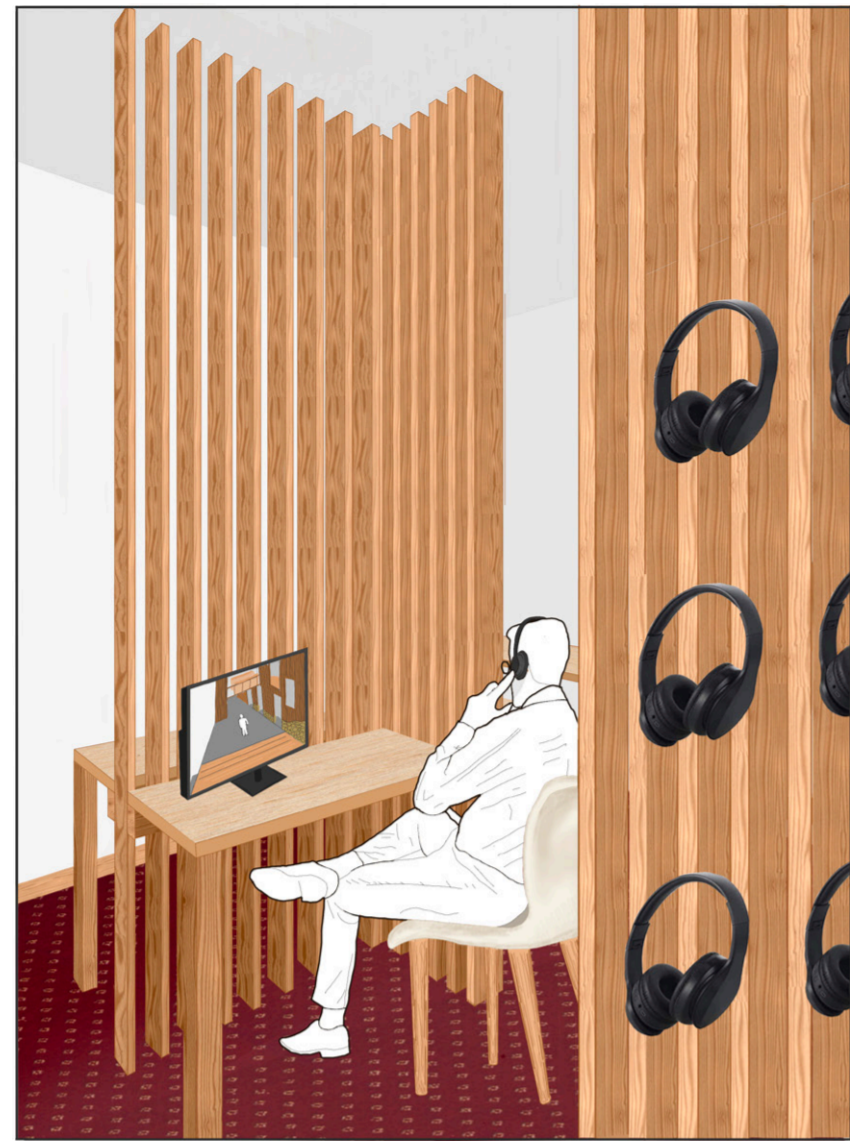
Solo Archiving Space Perspective

This perspective shows the solo workspace, which is one of the three rooms where the Newcastle library archives can be accessed. Also the video and audio archives which are recorded within the speaking space of 'The Spoken Archives' can be accessed. There are 14 computers in the solo archiving space for visitors to use individually using the headphones which are provided to listen to the recordings of past lectures and talks. This space is meant to provide a more relaxed and private environment compared to the more group focused learning spaces located on the floor above.

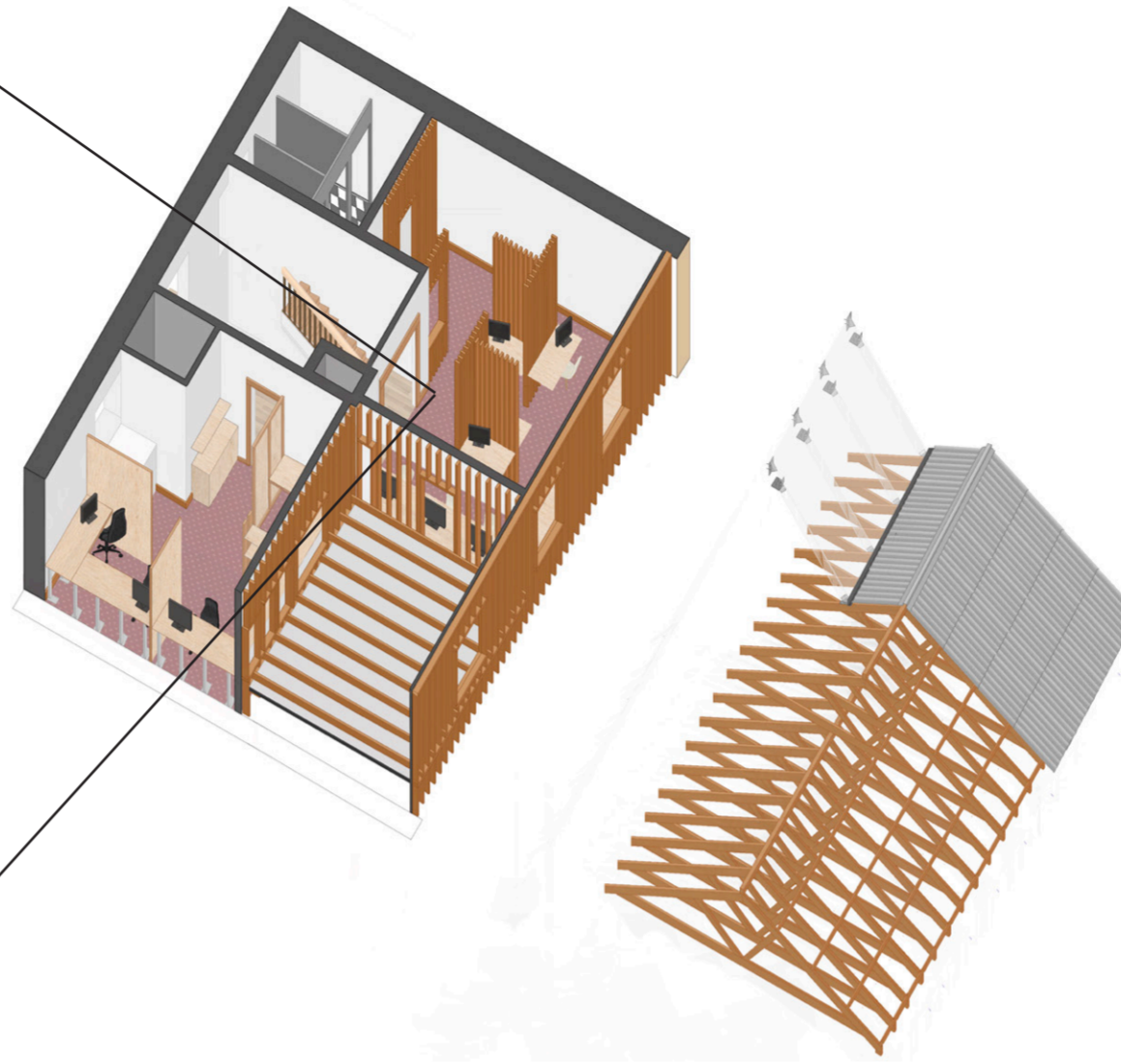
Speaking Space Perspective

The speaking space is located on the ground floor at the end of the newly added extension behind the portico. The newly extended space is multi functional but is predominantly used for recording and filming lectures that take place on the site, as can be seen in the perspective. There are only around 24 seats in the speaking space with minimal space to expand seating. This is why the process of recording and archiving is so important for the buildings purpose. Also providing a reason for people to come and experience 'The Spoken Archives'.

Solo Archiving Space Perspective



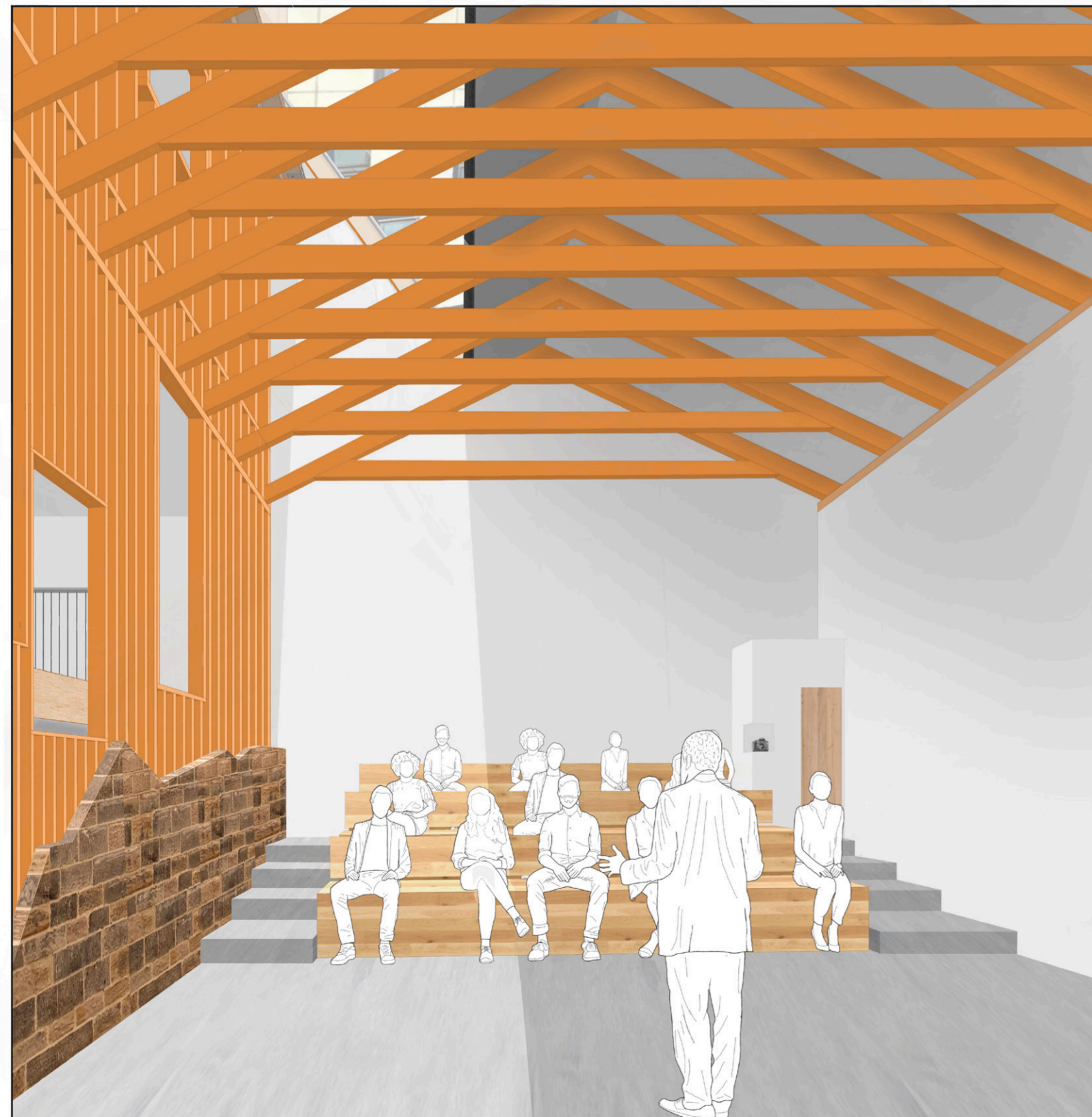
Second Floor



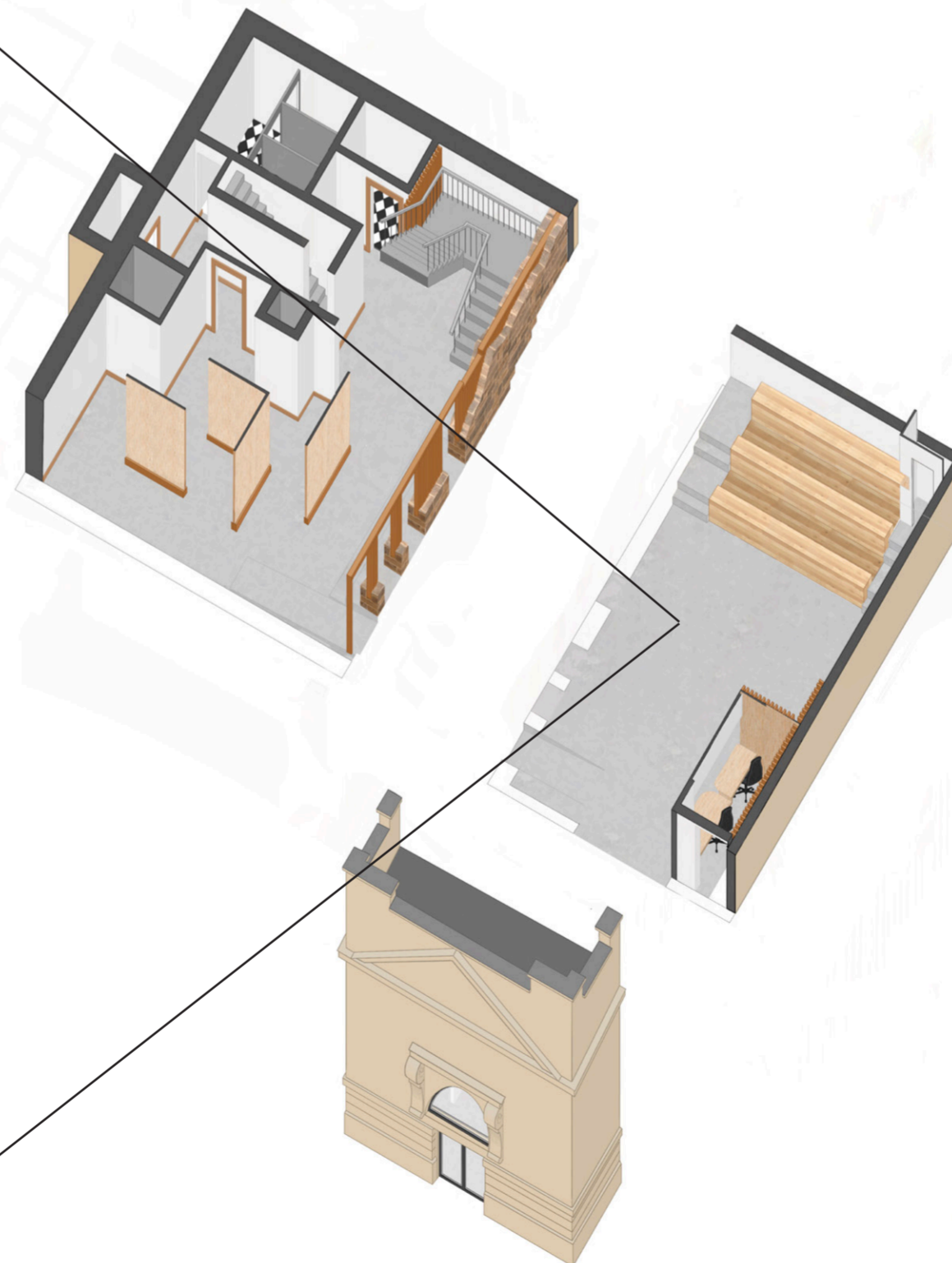
Third Floor



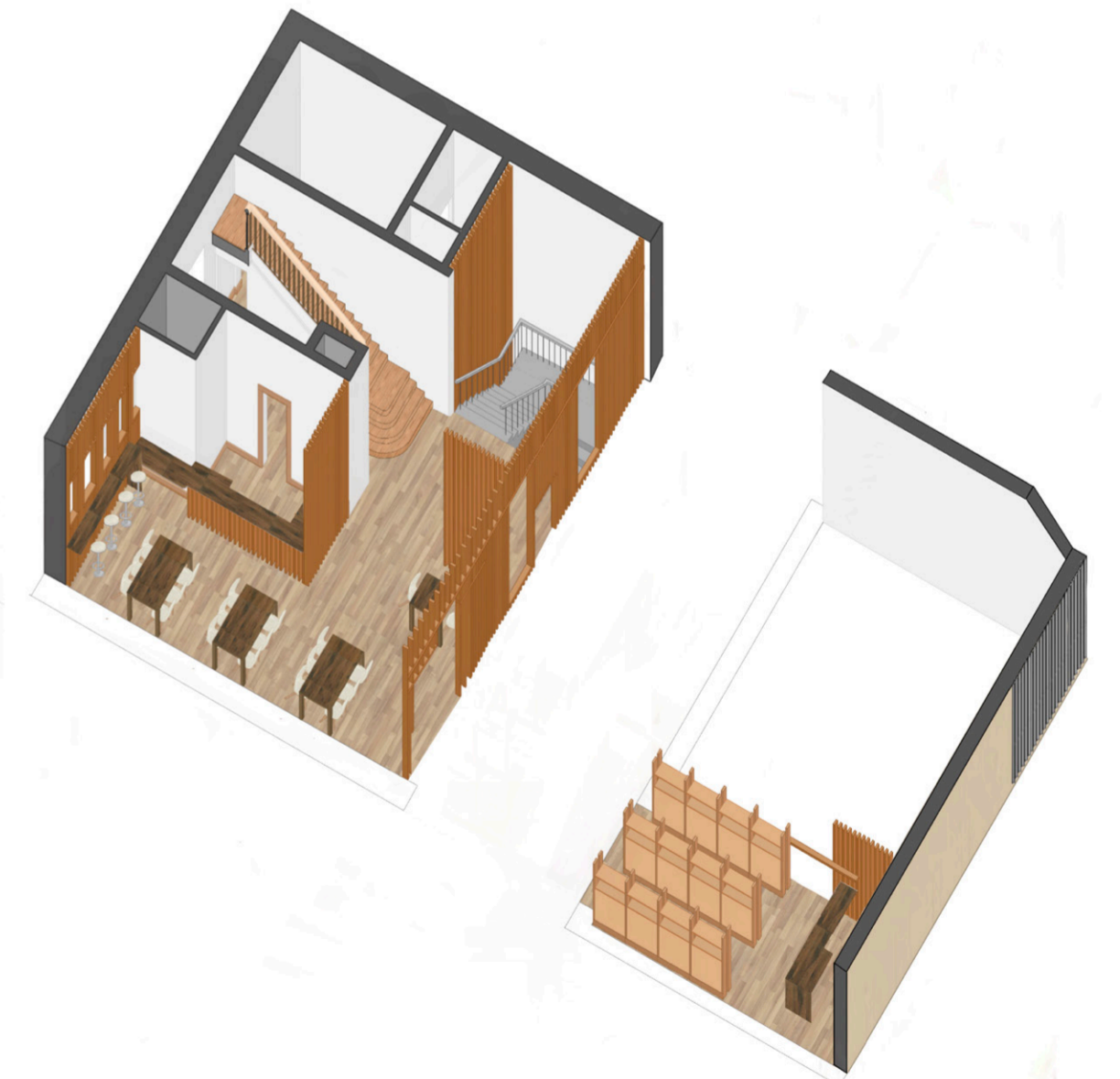
Speaking Space Perspective



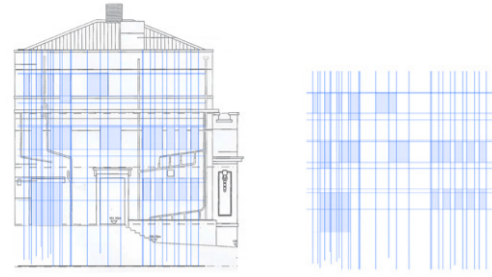
Ground Floor



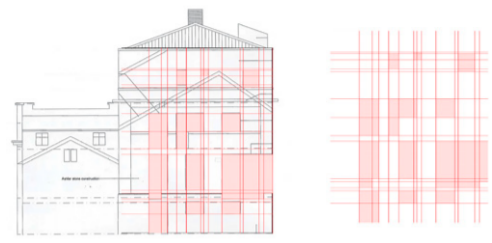
First Floor



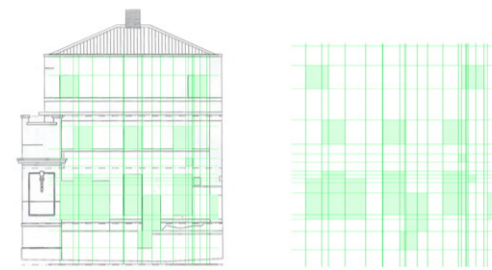
West Facing Facade



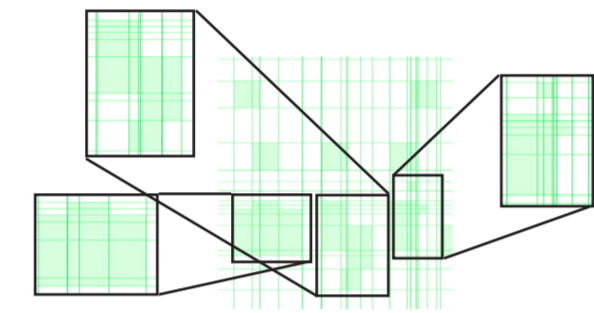
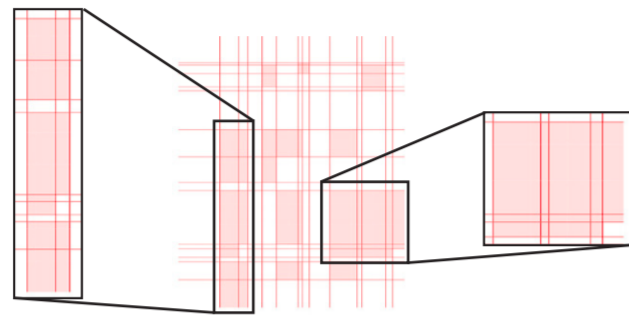
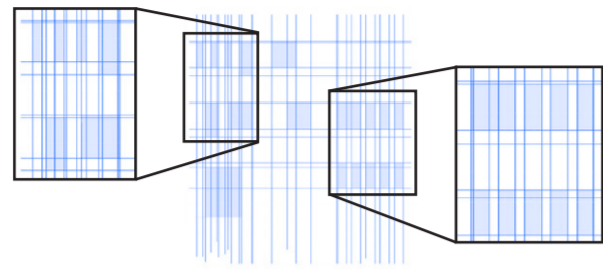
North Facing Facade



East Facing Facade

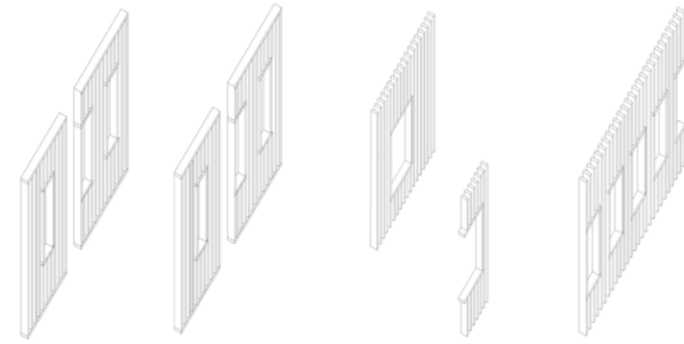


Isolating Interesting features of the Existing Facades

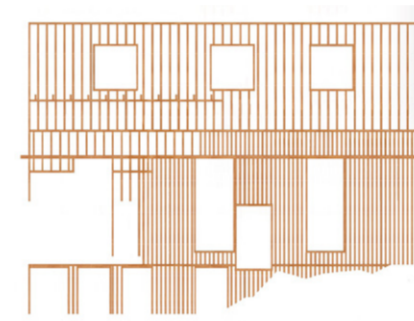


Showing past alterations made to the facades of John Dobsons House was a focal point in the design of the space, as making the past visible in a new and alternate way. Using 150mm x 50mm timber struts to highlight aspects of the modifications made to John Dobsons House in the past, shown as cut outs between evenly placed struts. The evenly placed struts work as balustrades allowing for the cafe area of John Dobsons House to look over into the speaking space in the new extension. There is a steel structure on the East facade, in turn reducing the stress on the timber detailing struts supporting the overhanging third floor.

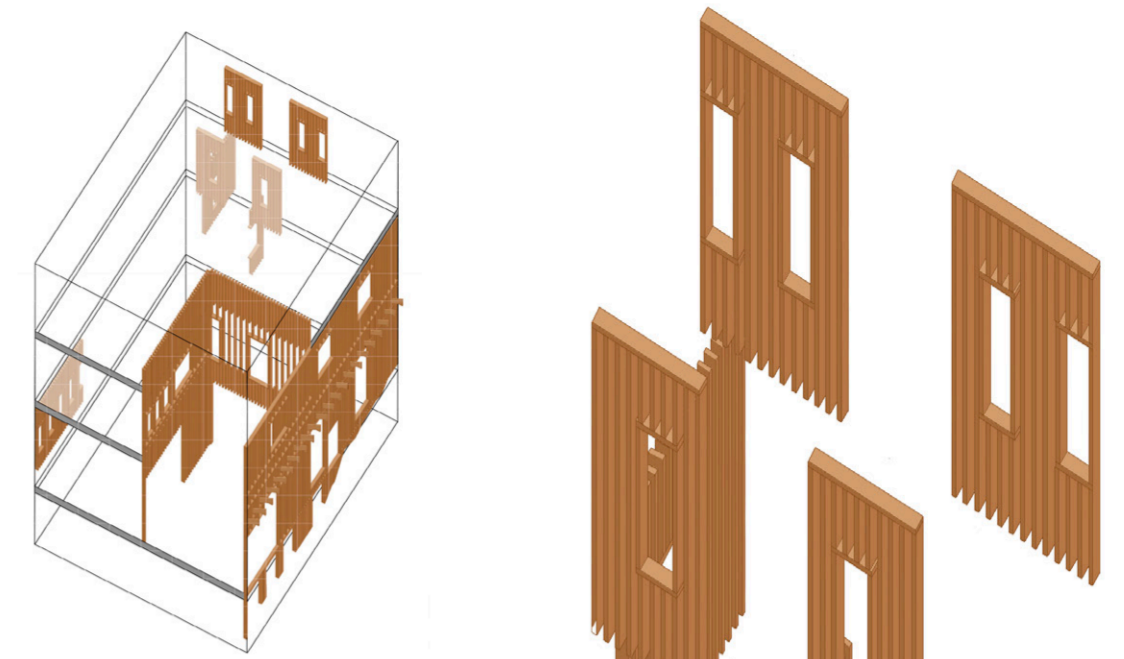
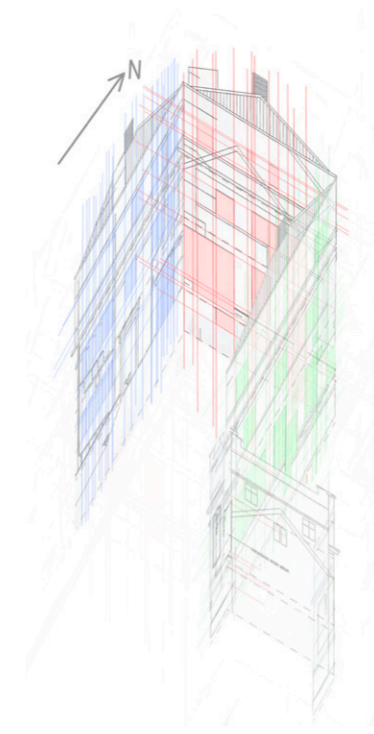
Features from the West Facade



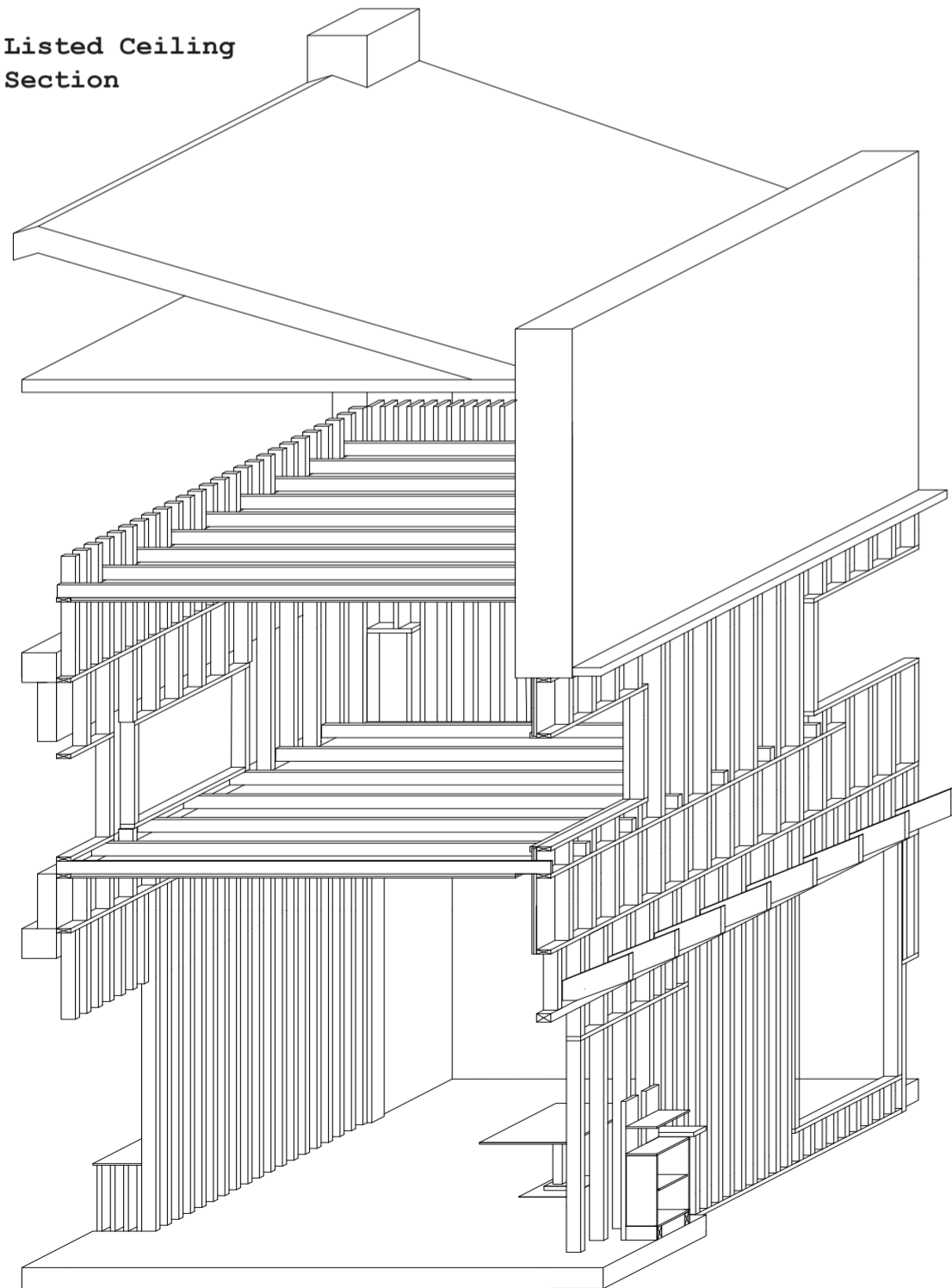
East Facade



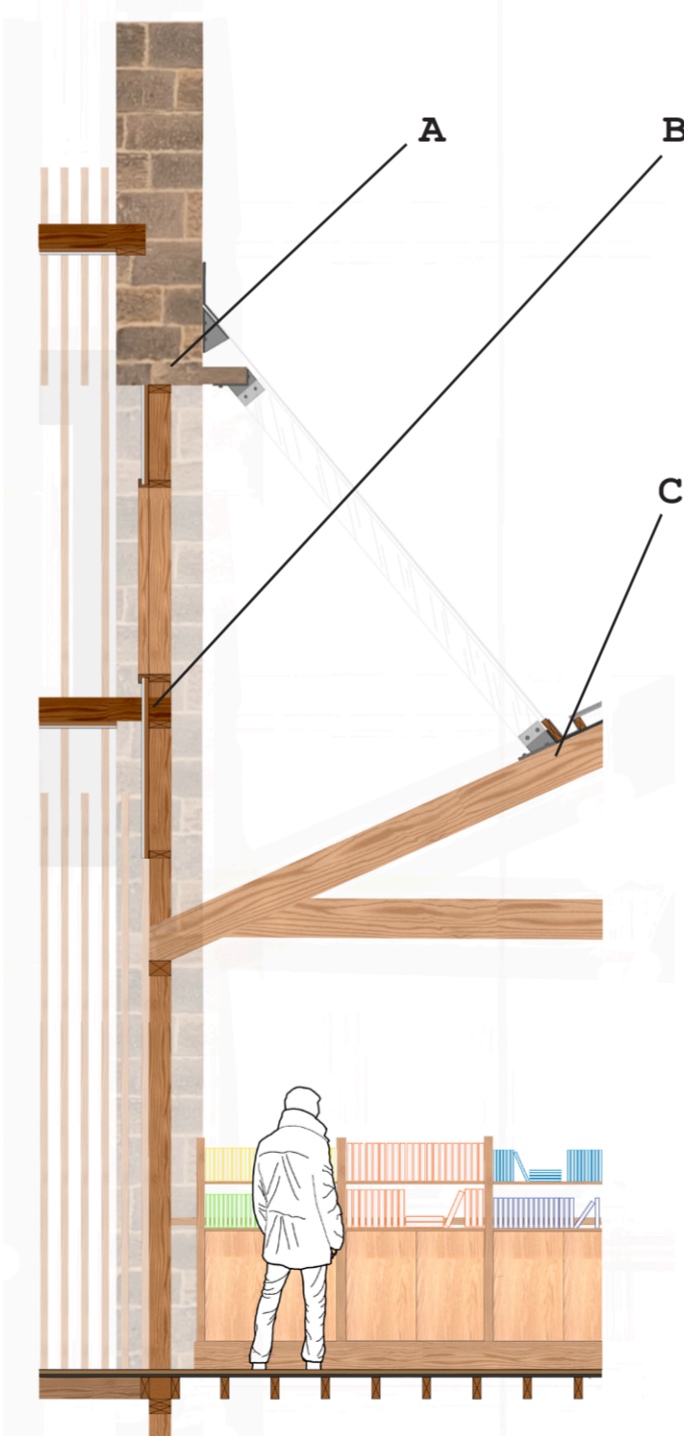
Timber Strut Detailing



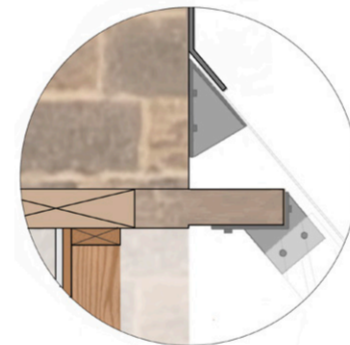
Listed Ceiling Section



Detailed Section



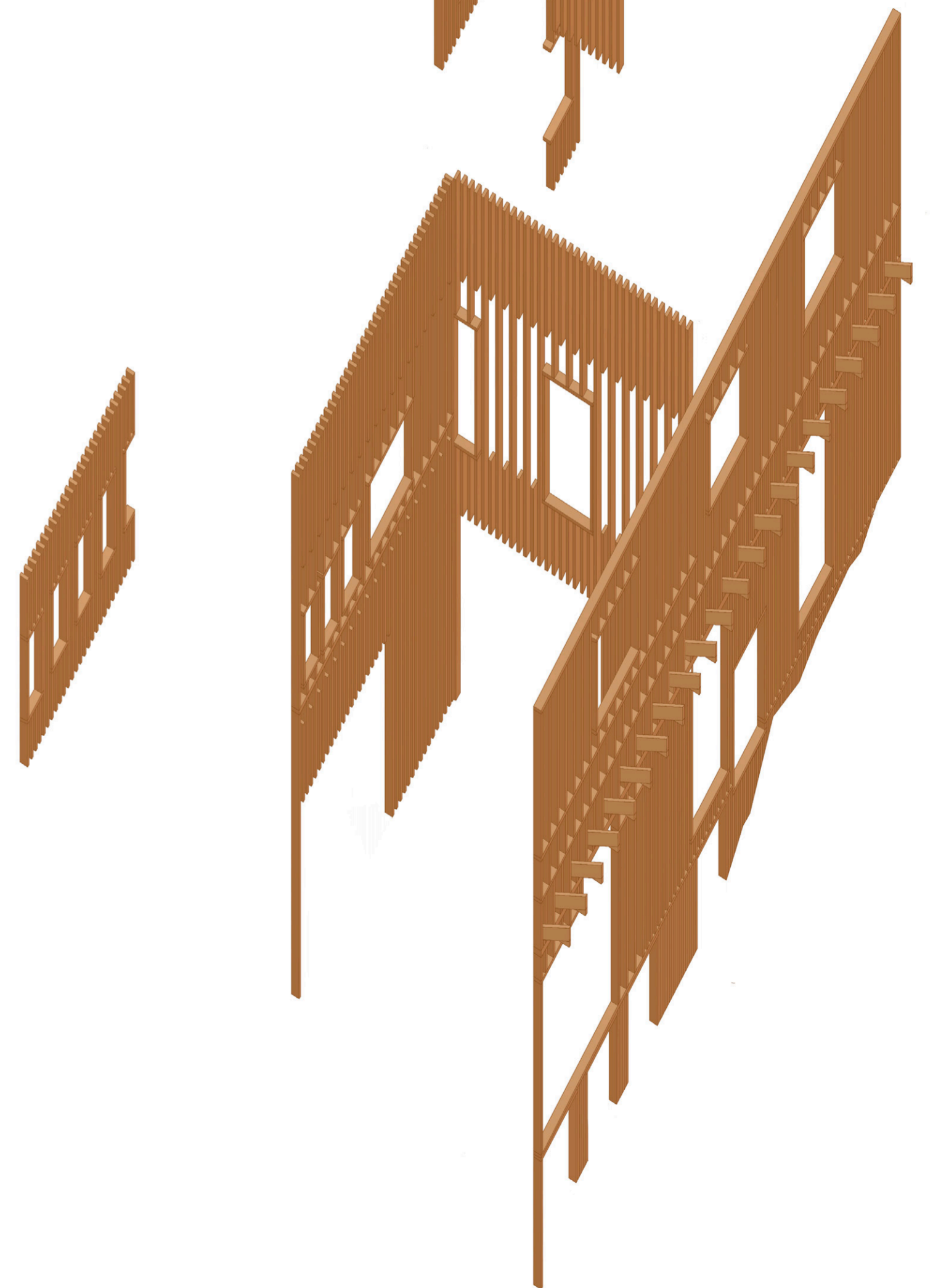
Section A



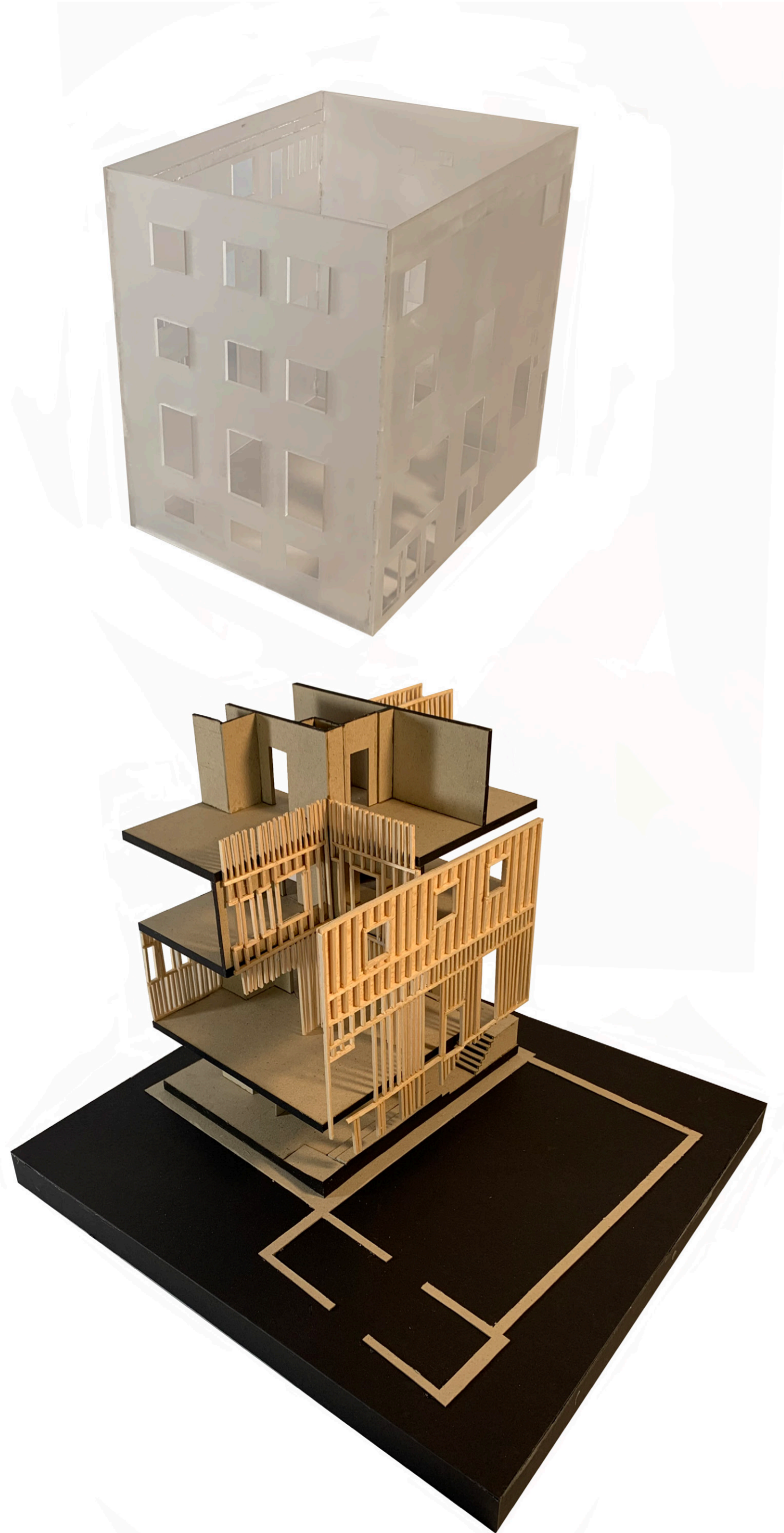
Section B



Section C



John Dobsons House With Timber Strut Detailing



floor
Intersection

Cafe Space



Solo
Archiving
Space

Cafe Space



Through Solo Archiving Space



Floor Intersection

