

# ARCHITECT'S PLAYGROUND

The site Gibb chambers, located on Westgate Road, in the centre of Newcastle upon Tyne, has been commissioned by NTCA to form a new cultural and creative zone in order to enhance the local creative community through the form of a co-working hub. The surrounding area is rich in historic and urban architecture with convenient transport links making it a prime location for such project.

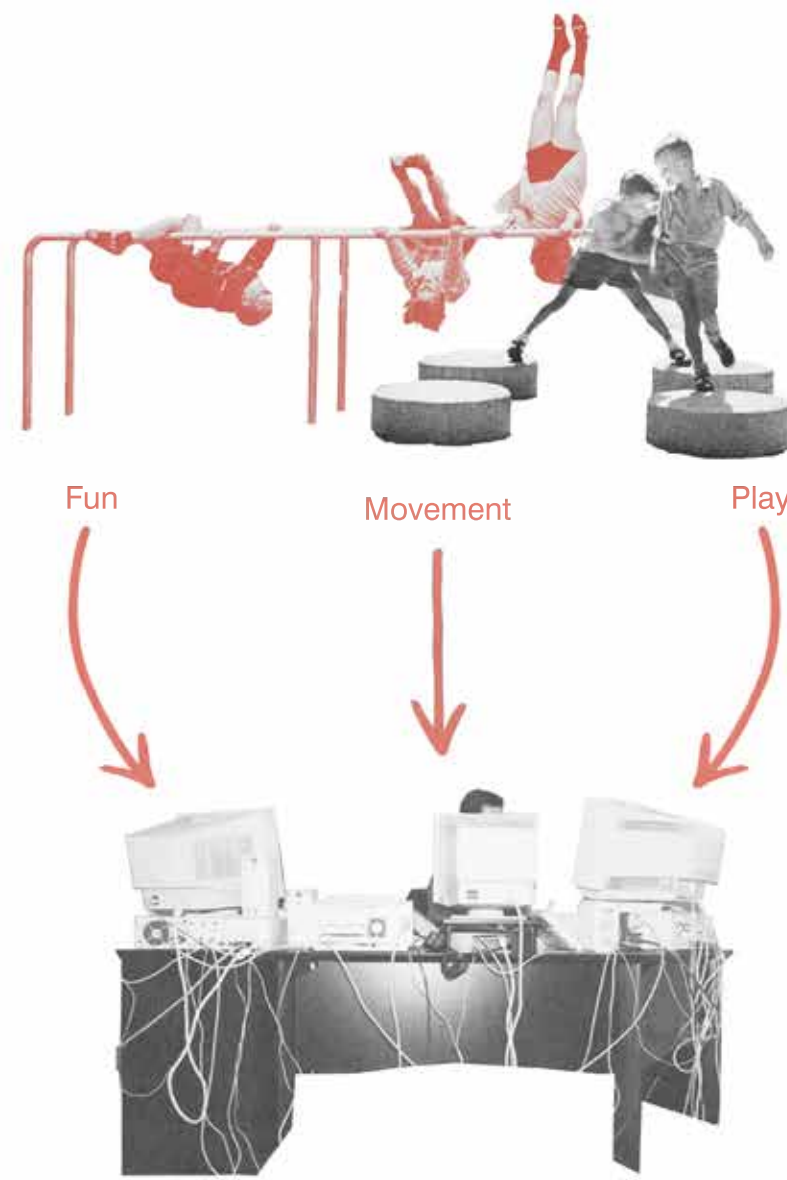
The scheme is tailored to provide an aspirational and fun environment for architects derived from the concept of playfulness within the workplace. The response from the building which sparked this was the varying floor levels and a cast iron ladder at the top of the stairwell which also prompted the spatial strategy of creating fun via movement through the building. The development of these ideologies lead to the introduction of a bouldering gym as part of the brief's public facing requirement. The volumetric playfulness of the scheme harmonises with the addition of various movable and thought-provoking installations, creating a semi-modular environment where architects are encouraged to experiment and "play" whilst retaining the functional requirement of a co-working environment.



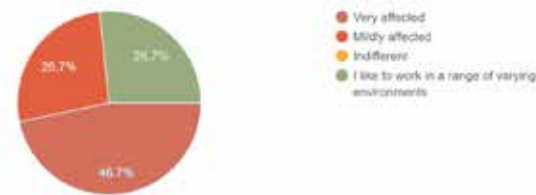
Site location within map of the UK

Site location within the City of Newcastle Upon Tyne

Sunpath within immediate surrounding infrastructure



When making design decisions how affected are you by the quality of your working environment? I.e. working in a darkened room as opposed to a well lit room  
19 responses



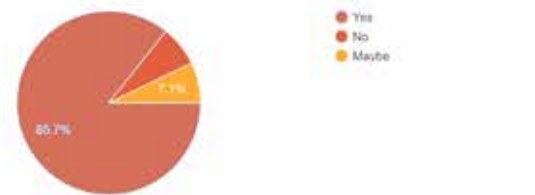
Throughout the design process a whole how do you feel your mental health and stress levels are affected?  
19 responses



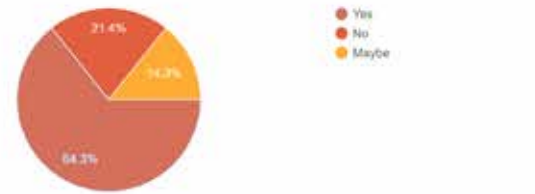
Do you feel your viewpoint on the architectural industry has changed from your first venture into it?  
15 responses



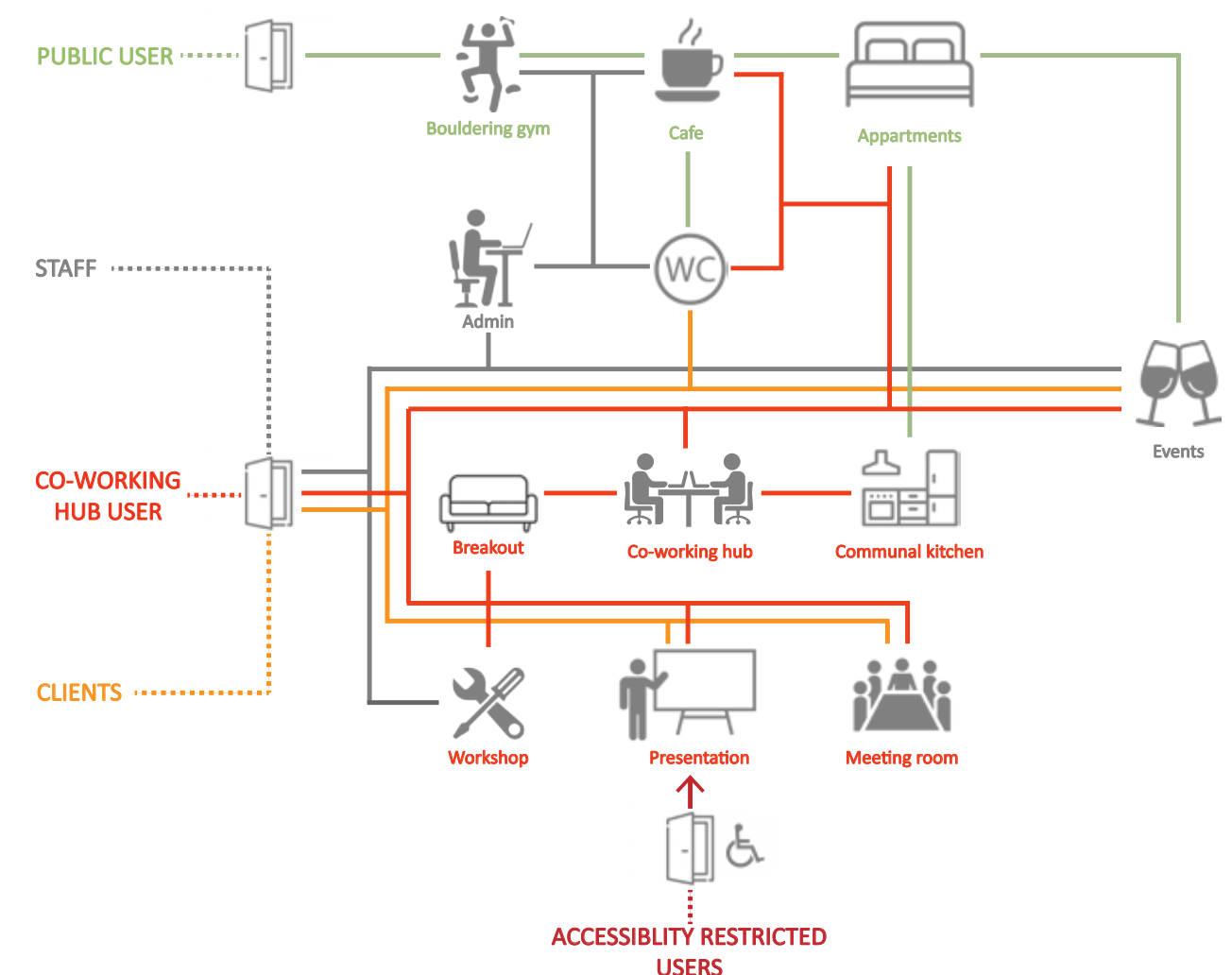
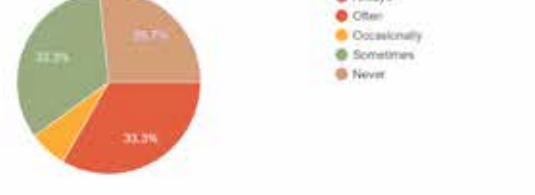
When developing a concept for a proposal, do you feel you take inspiration from your immediate and wider surroundings?  
14 responses



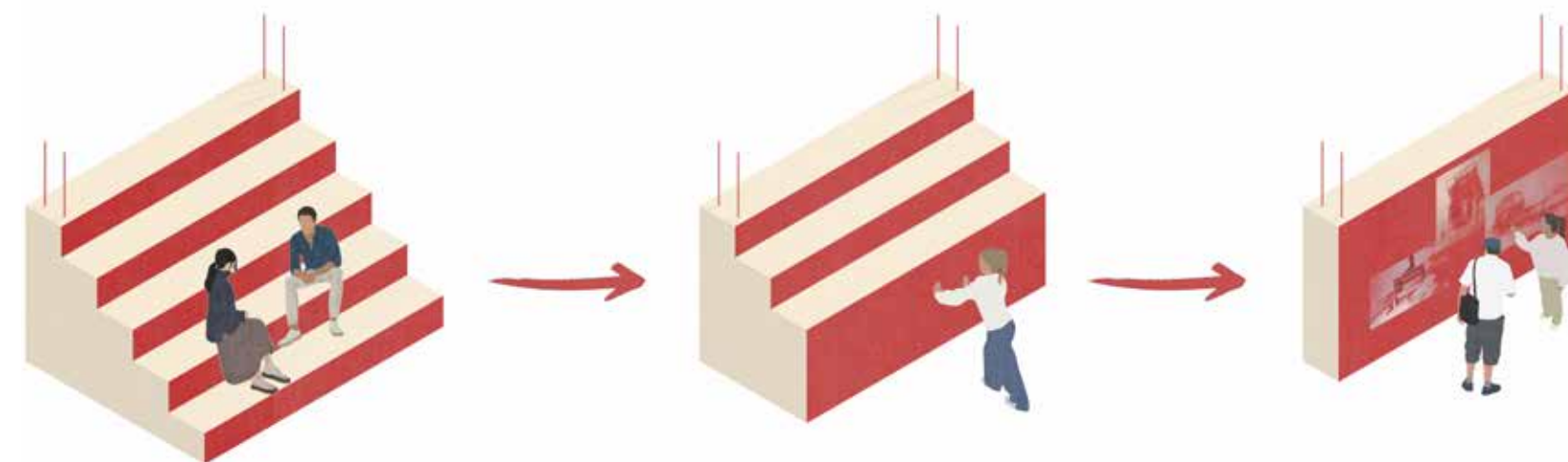
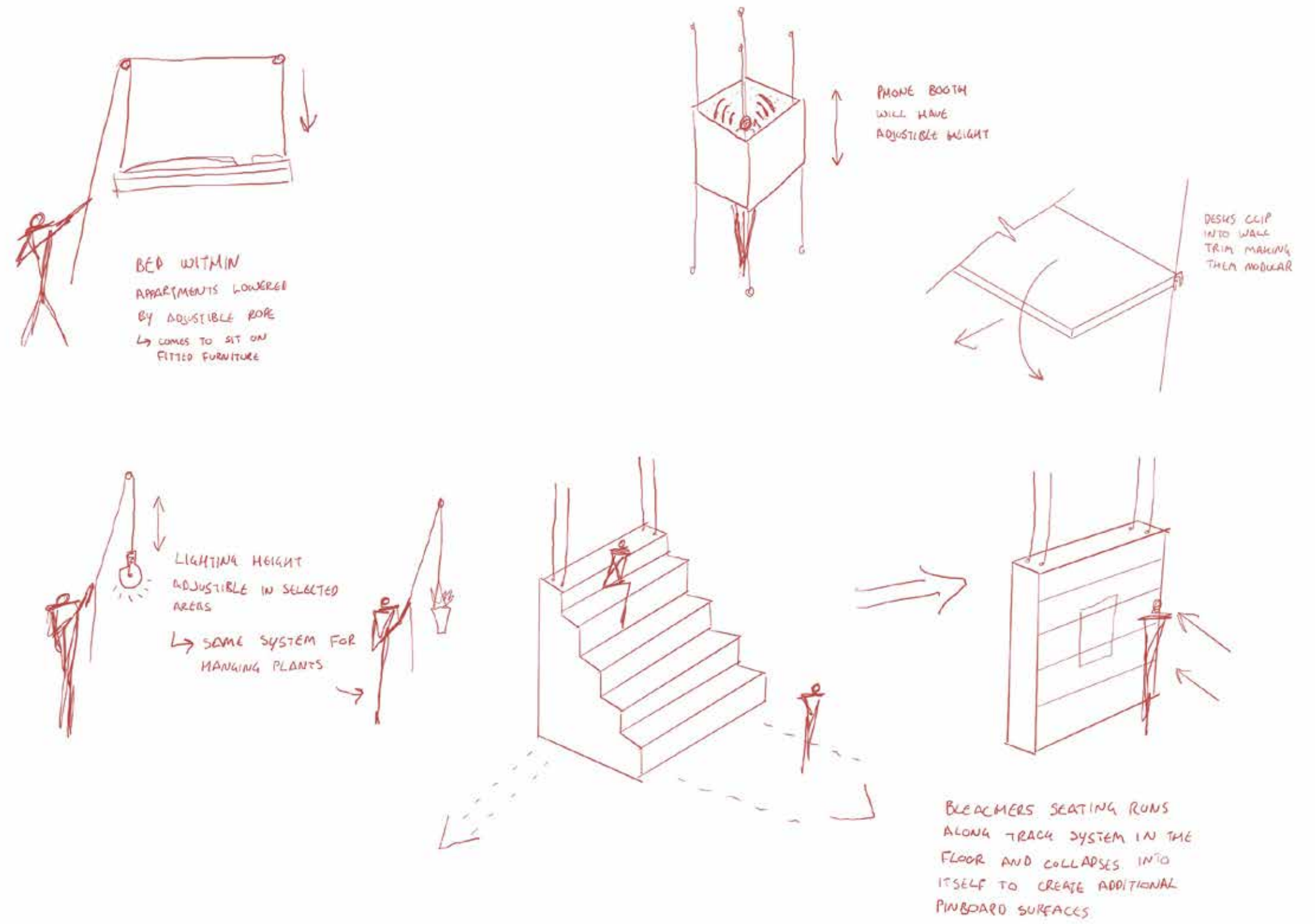
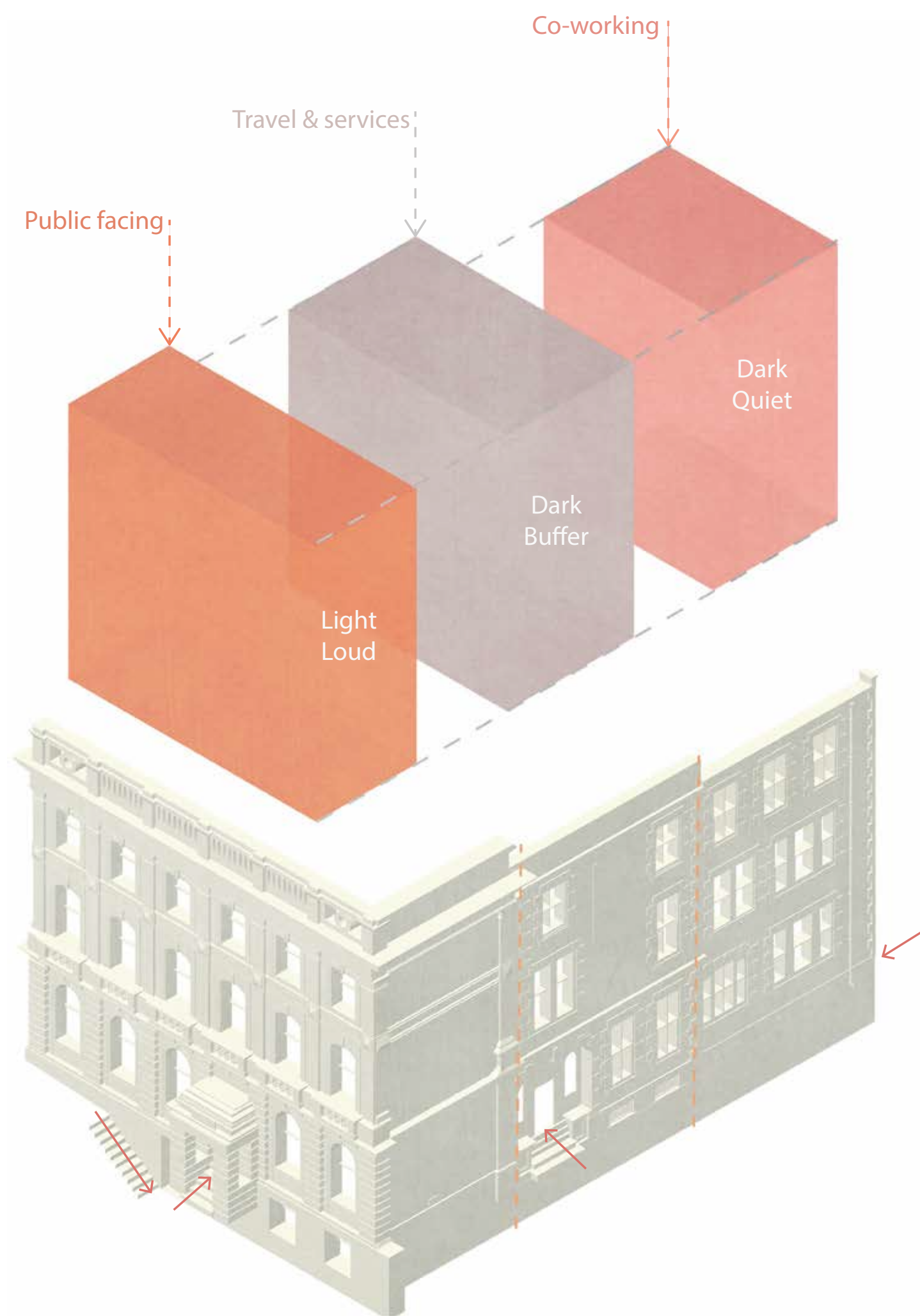
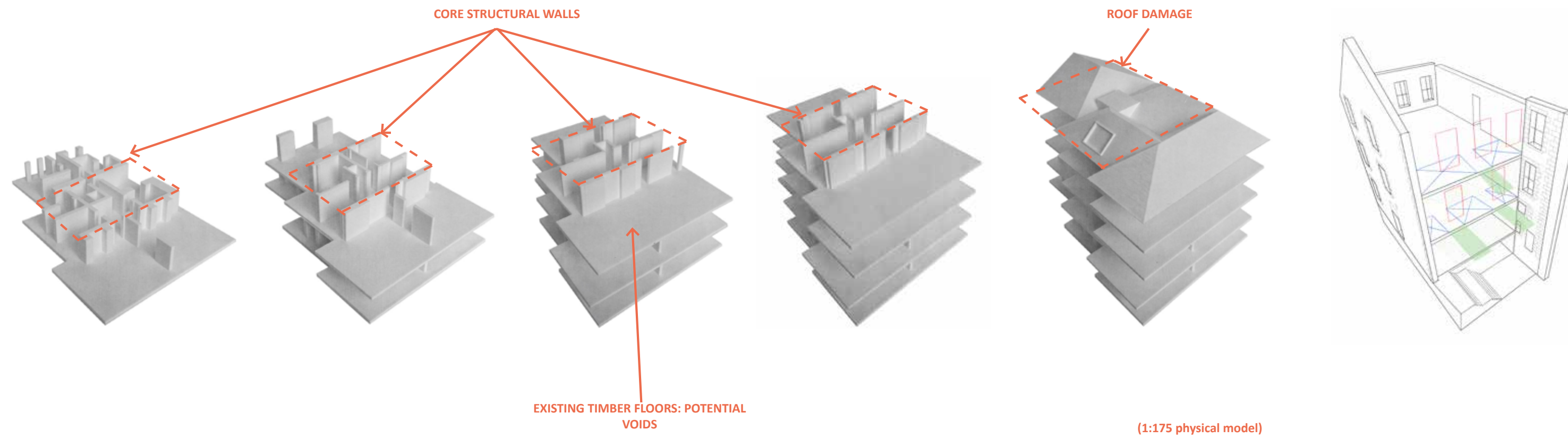
Do you ever feel your design scope is limited when applying it towards construction and feasibility?  
14 responses



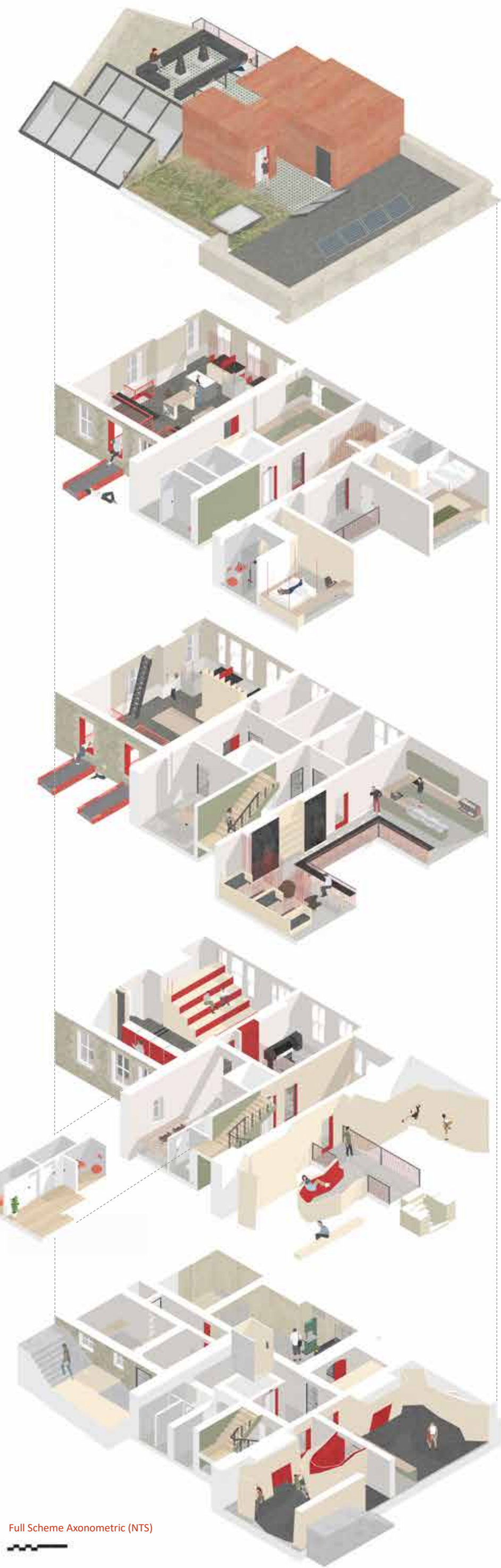
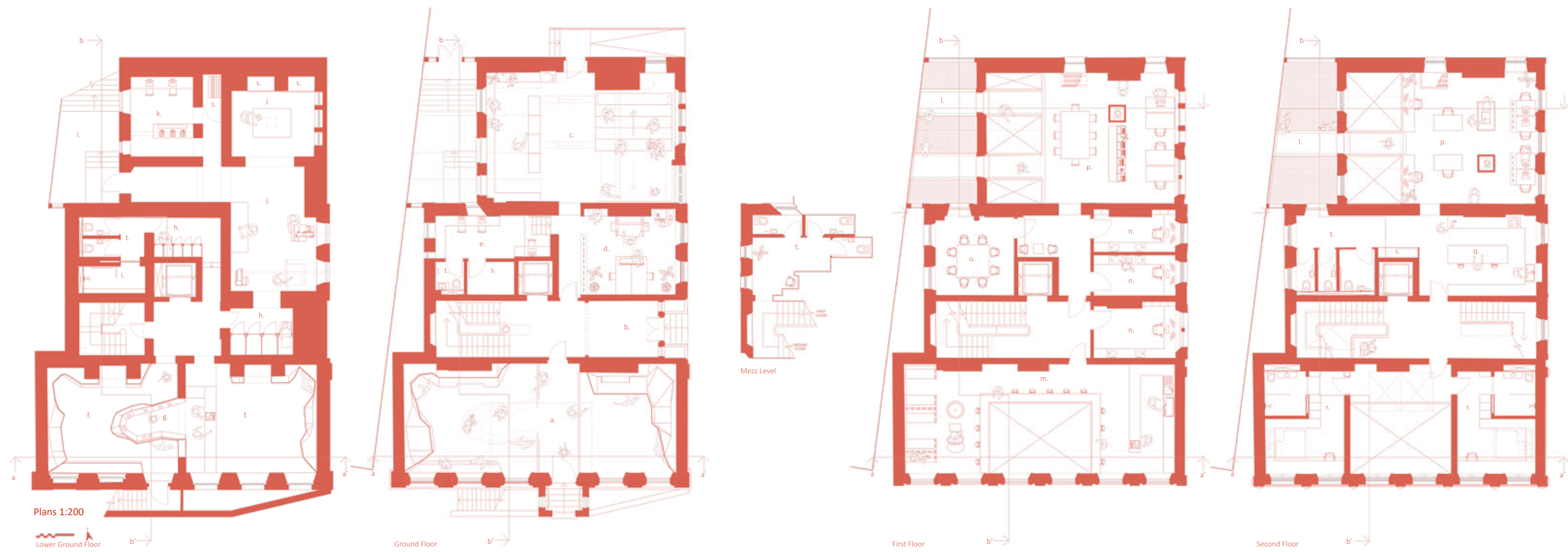
How often do you work from home as opposed to a communal working space?  
15 responses



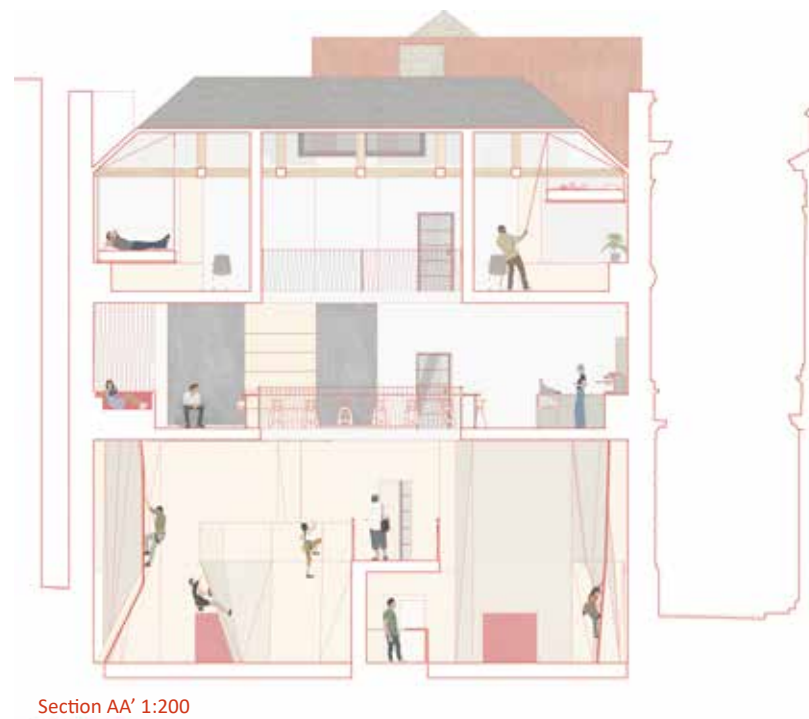
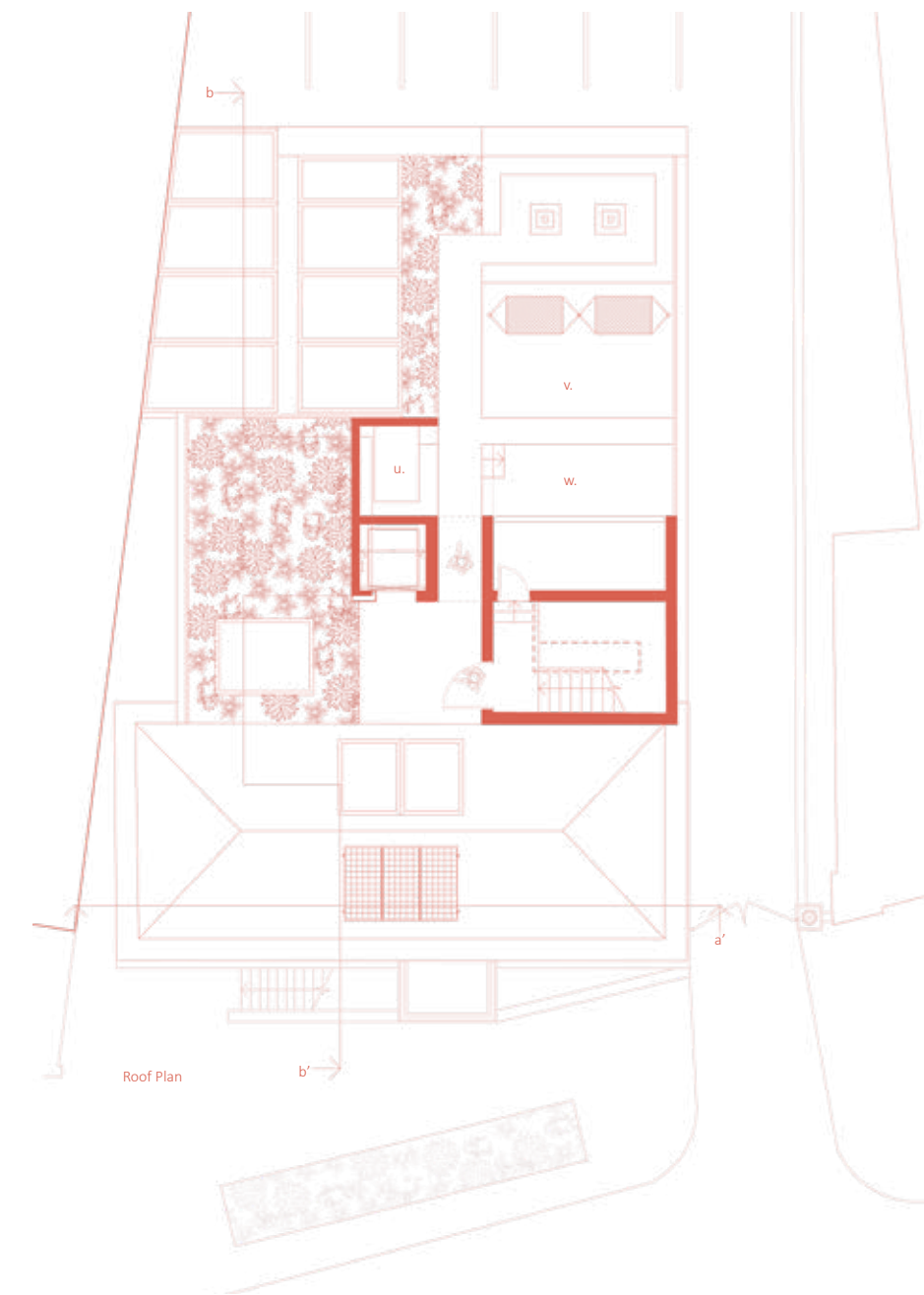








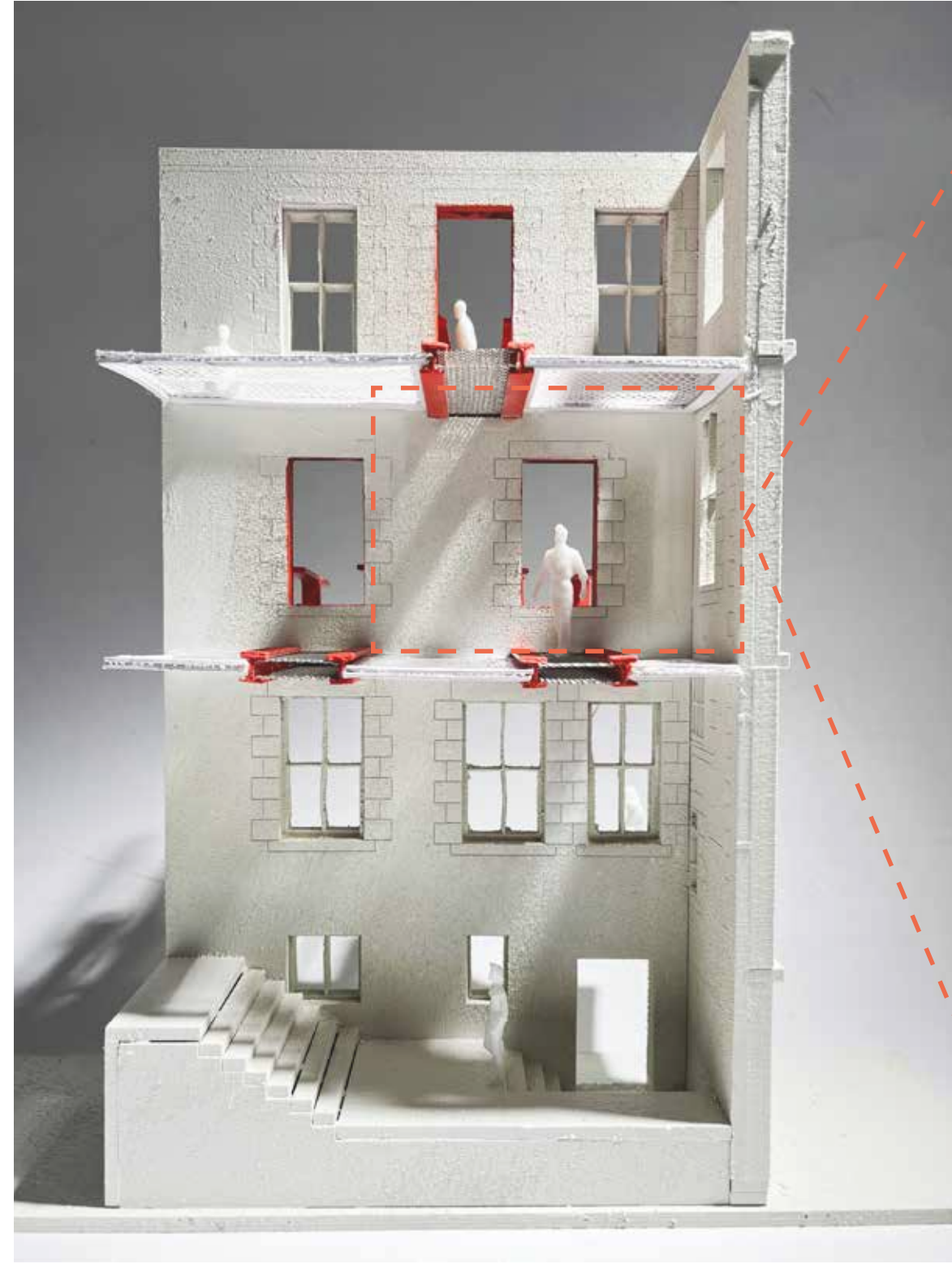
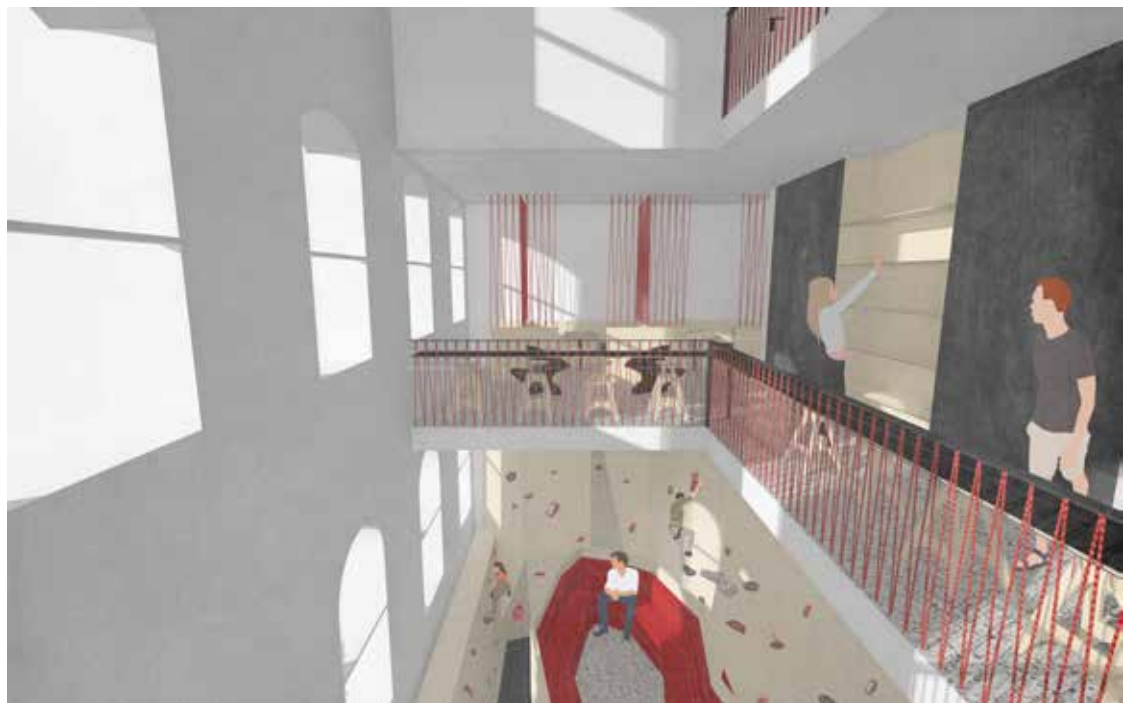
- a. Primary entrance walkway/ conversation pit
- b. Secondary entrance
- c. Presentation space/ accessible entrance
- d. Print room
- e. Admin office
- f. Bouldering gym
- g. Shoe exchange storage
- h. Storage lockers
- i. Shower/ changing facilities
- j. Small scale workshop
- k. 3D printing hub
- l. Break out spaces
- m. Cafe
- n. Offices
- o. Meeting room
- p. Co-working spaces
- q. Communal kitchen
- r. Short stay apartments
- s. Storage
- t. Toilets
- u. Bar
- v. Event space
- w. Raised speaking platform



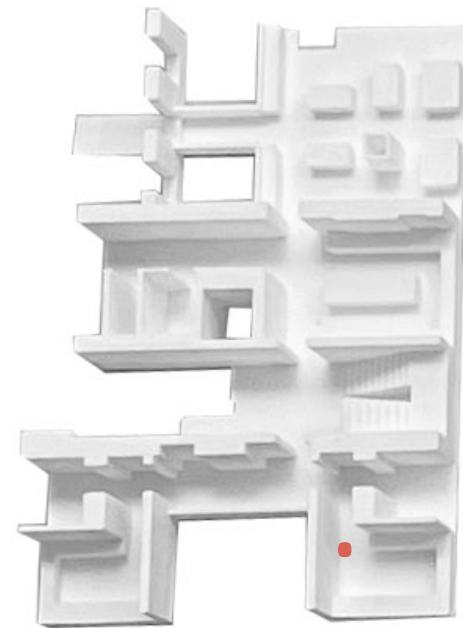
Movable Elements

<https://ghalifax987.wixsite.com/architects-playgroun>

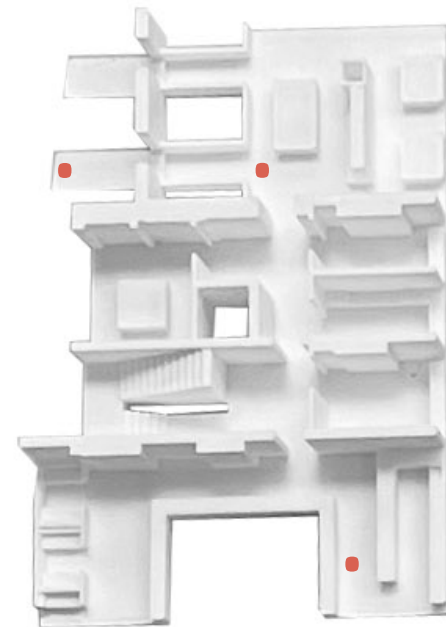




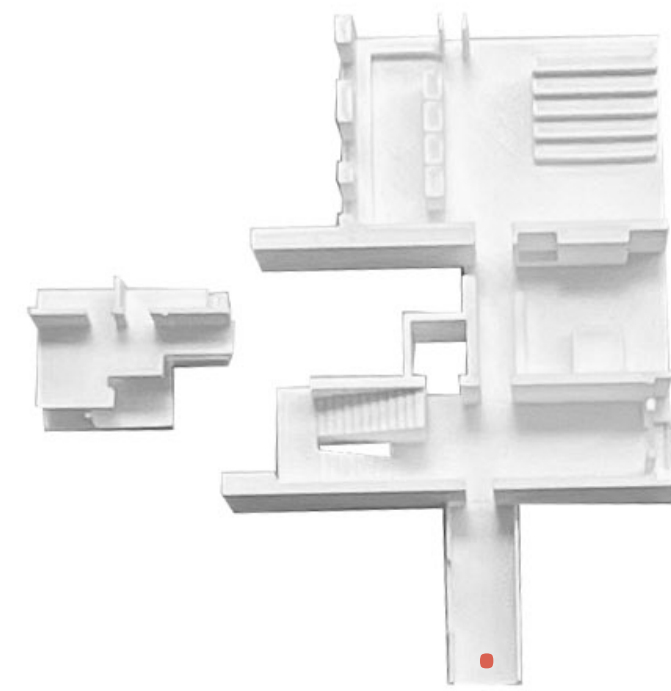
R



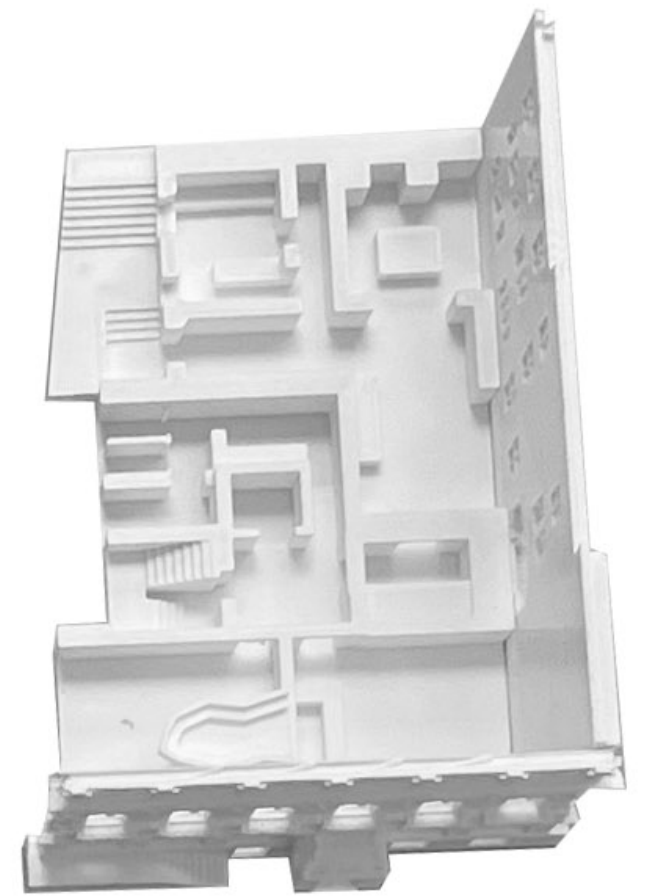
2



1

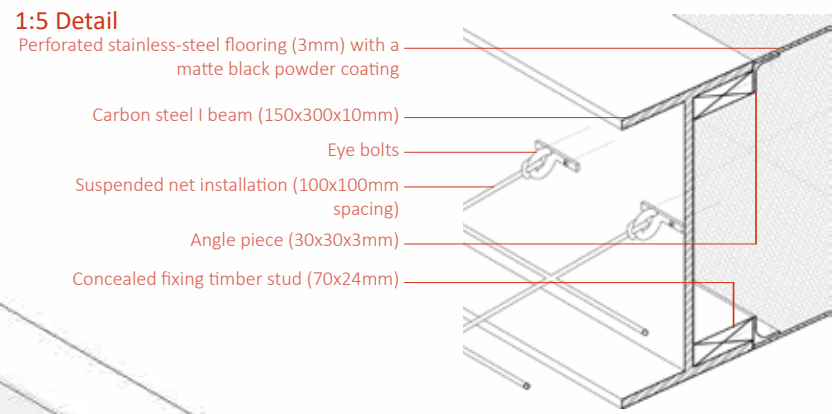
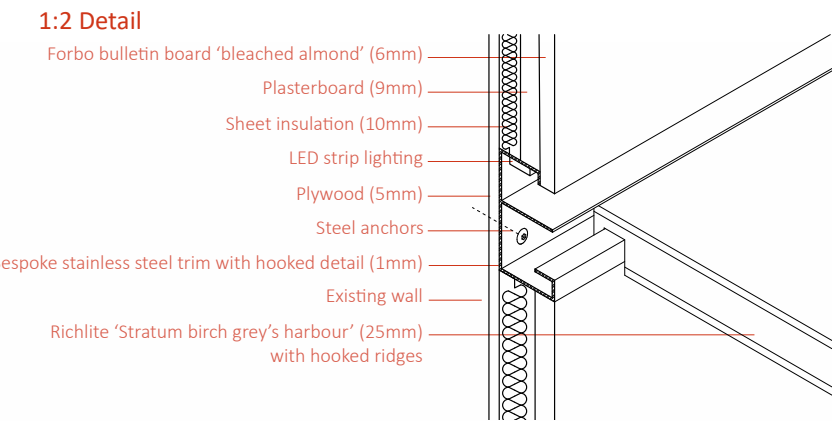
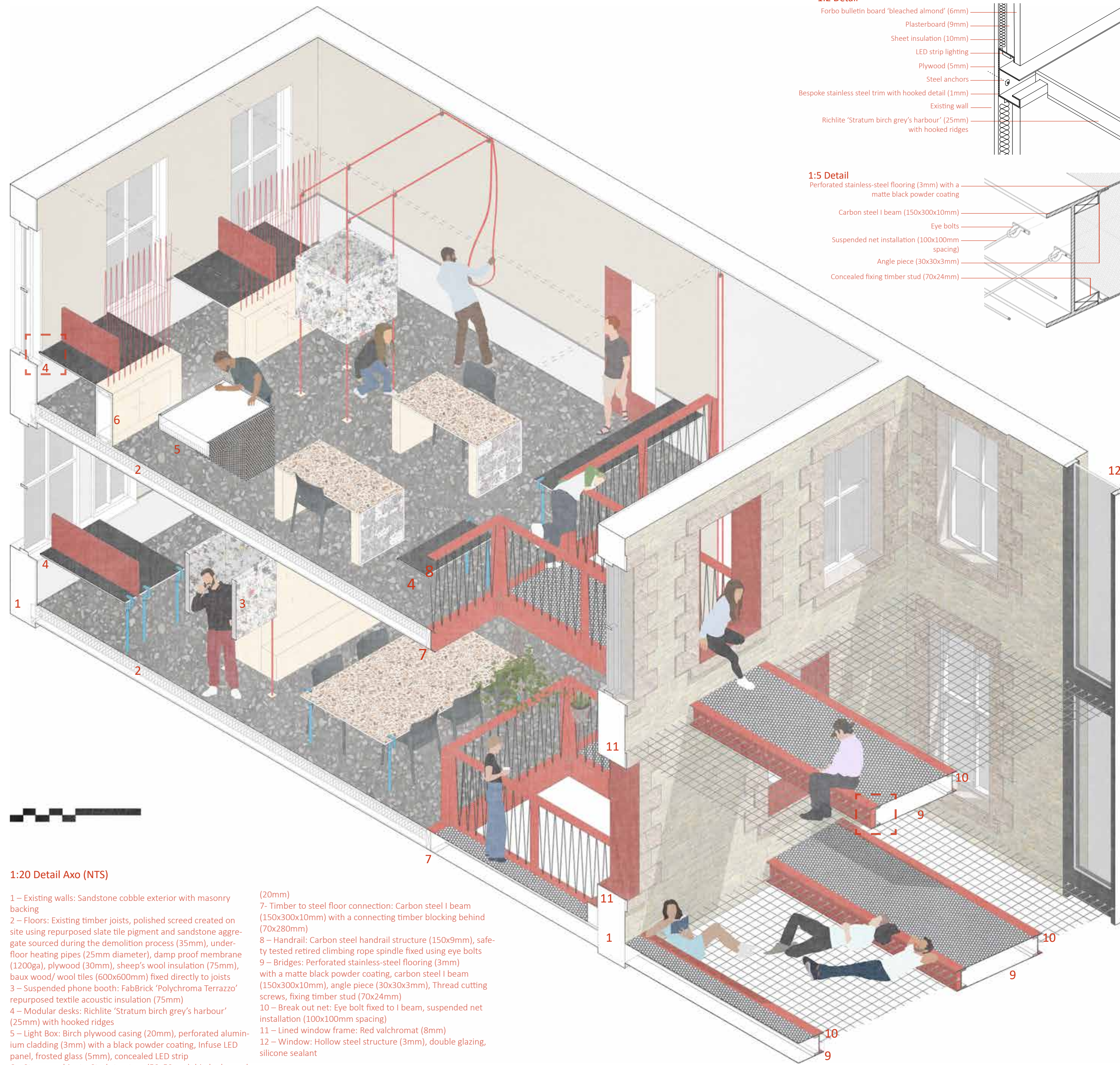


G



B





**1:20 Detail Axo (NTS)**

- 1 – Existing walls: Sandstone cobble exterior with masonry backing
- 2 – Floors: Existing timber joists, polished screed created on site using repurposed slate tile pigment and sandstone aggregate sourced during the demolition process (35mm), under-floor heating pipes (25mm diameter), damp proof membrane (1200ga), plywood (30mm), sheep's wool insulation (75mm), baux wood/ wool tiles (600x600mm) fixed directly to joists
- 3 – Suspended phone booth: FabBrick 'Polychroma Terrazzo' repurposed textile acoustic insulation (75mm)
- 4 – Modular desks: Richlite 'Stratum birch grey's harbour' (25mm) with hooked ridges
- 5 – Light Box: Birch plywood casing (20mm), perforated aluminium cladding (3mm) with a black powder coating, infuse LED panel, frosted glass (5mm), concealed LED strip
- 6 – Storage cabinets: Stud structure (50x50mm), birch plywood

- (20mm)
- 7- Timber to steel floor connection: Carbon steel I beam (150x300x10mm) with a connecting timber blocking behind (70x280mm)
- 8 – Handrail: Carbon steel handrail structure (150x9mm), safety tested retired climbing rope spindle fixed using eye bolts
- 9 – Bridges: Perforated stainless-steel flooring (3mm) with a matte black powder coating, carbon steel I beam (150x300x10mm), angle piece (30x30x3mm), Thread cutting screws, fixing timber stud (70x24mm)
- 10 – Break out net: Eye bolt fixed to I beam, suspended net installation (100x100mm spacing)
- 11 – Lined window frame: Red valchromat (8mm)
- 12 – Window: Hollow steel structure (3mm), double glazing, silicone sealant

