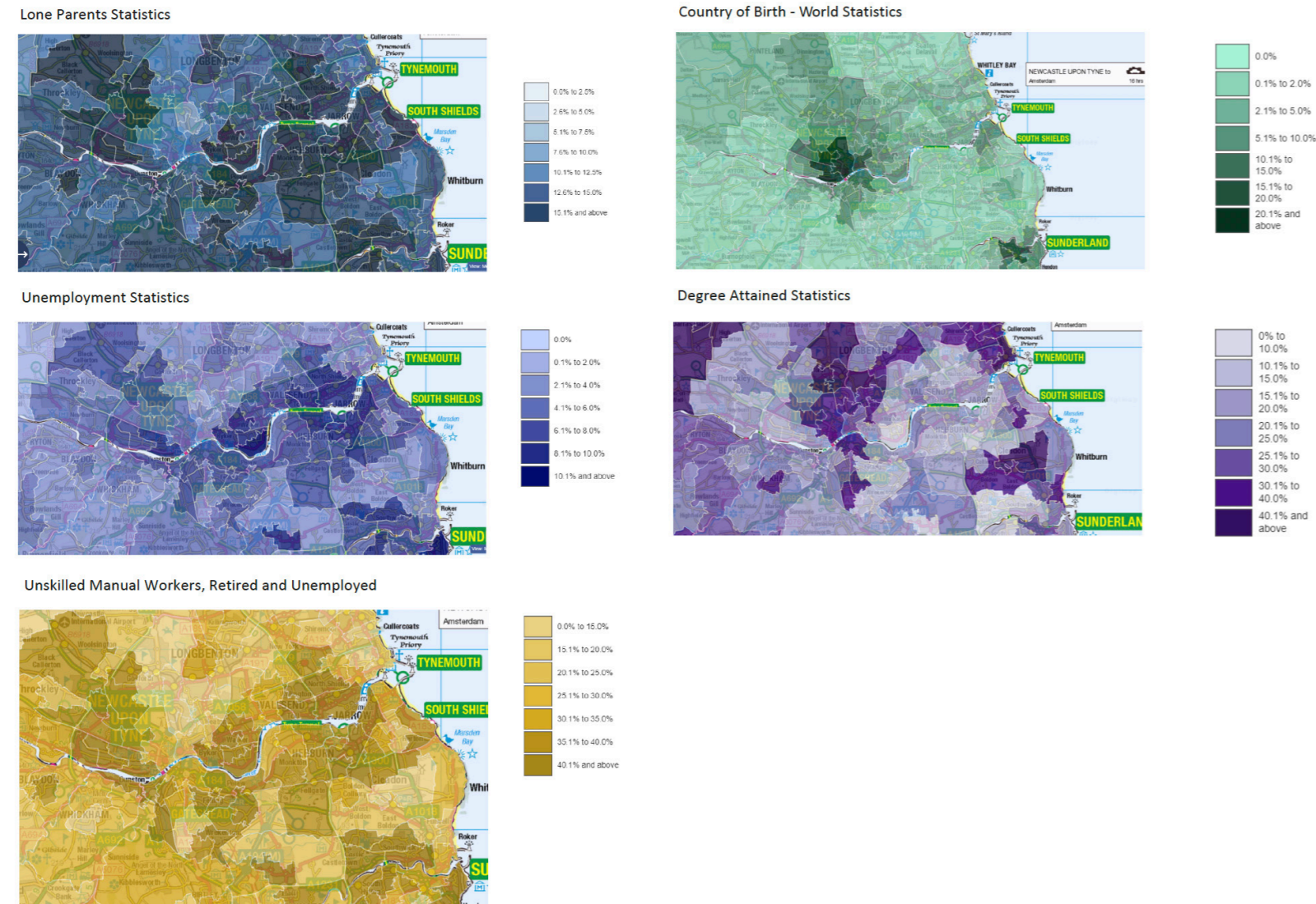


Data Analysis and Site Context

Socio-economic Context



The YMCA centre is situated in the centre of Newcastle Upon-Tyne, the charity aims to provide vital services for Newcastle's Young Adult demographic, providing guidance on vital issues such as mental health, unemployment, education etc. When drawing upon recorded data to analyse the schemes vital needs and requirements, significant issues were illuminated:

- Young adults lack higher qualifications - above GCSE level.
- A large quantity of young adults lack qualifications that will allow them to access a skilled workforce - manual labour/unskilled work is the predominant occupation accessed.
- A high percentage of households have single parents and thus single parent income - leading in a lower level of financial support in a child's education and extra-curricular activities.
- A high level of society, especially young adults are first generation immigrants - who may not have the qualifications needed to access high skilled jobs.
- A minority that may be isolated due to English not being their first language - affecting their ability to cohesively integrate into society and work.
- High level of unemployment - specifically young adults.
- Low level of degree attainment.
- Little or no work experience.

All information attained through DigiMaps Society Roam.

Site Context



The site is central and easily accessible to all, through means of pedestrian routes, bus routes, cycle lanes and train. The site enables individuals whom may not have access to car or personal transport an equal opportunity to access the sites facilities.

Responses to the Data within the Scheme:

In response to the data collected from the socio-economic maps, the scheme aims to bridge societal gaps caused by factors such as unemployment, single parent house holds, unattained qualifications etc. and create a support network that provides accessibility to all and the opportunity to progress to higher levels of employment. Proving that diversity can be achieved and individuals may succeed despite their background and initial skill set.

Support will also be provided for those who may be struggling from other circumstances from the on site support staff, the scheme creates multiple areas for 1-1 support. The YMCA focuses heavily on mental health well-being and the importance of communication.

Scheme Overview and Accessibility (Building Regulations: Part M)

1. Stacked Seating Discussion Space
2. Lift and Stairs
3. Waiting Area/Circulation Space
4. Studio One
5. Studio Two
6. Studio Three



Minimum of 800mm width of every opening and a minimum of 300mm at the leading edge of the door to allow manoeuvring - unless the door is power operated (2.13).

Any corridors or intended paths of circulation have a minimum width of 1800mm, to allow easy movement by a wheelchair user around the space, including comfortably passing another

Lift design provisions:

- Minimum dimensions of 1100 x 1400mm.
- Unobstructed manoeuvring space of 1500x1500mm.
- Landing call buttons at approximately 900mm from the landing floor.
- The lifts floor is not dark coloured and is not a material with a frictional nature.
- Mirror at the rear of the lift to allow an individual to safely manoeuvring in reverse.

1. Entrance
2. Community Cafe
3. Staff Room
4. Kitchen
5. Dry store
6. Cold Store
7. Toilets
8. Booth Seating
9. Stacked Seating Discussion Space
10. Lift and Stairs
11. Tiered Seating
12. Event space
13. Private Storage
14. Access to Rear of Site/Plant Room



Access provisions:

- "Access must be level from the boundary of the site" (1.6).
- The entrance is protected from the element and has a level threshold (2.6).
- Clearly sign posted with the International Symbol of Access (2.7).
- Power assisted door to allow access for wheelchair users and the less physically able - without assistance.
- When both halves of the door is open the width is 1600mm - 800mm wide is only one power assisted door is functioning (section two, table two).

Disabled toilet design provisions:

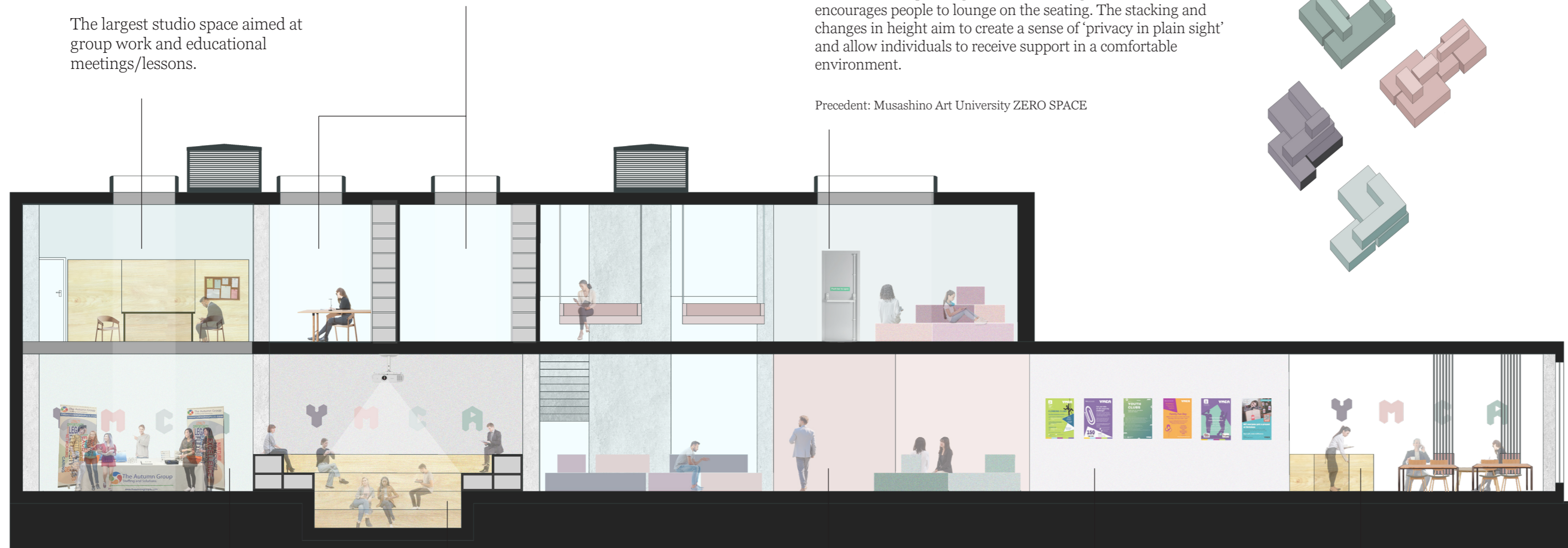
- In retrospect the disabled W.C door must open outwards,
- W.C dimensions are 2000mm x 1600mm exceeding the current 1500 x 2000 recommendation.
- The toilet will be equipped with the necessary pull rails and emergency assistance alarm system (5.10).

1:50 Long Section - Scheme Overview

Studio Space Three -

The largest studio space aimed at group work and educational meetings/lessons.

Studio Spaces Two and Three



0 1000 2000 3000 4000
SCALE BAR 1:100

Events space -

Multifunctional space to accommodate for events such as careers fairs - to help educate and support visitors. This space may also be used for informal events such as youth clubs, craft events etc.

Tiered Seating -

Tiered seating area to allow discussions and presentations - educational, informal movie screenings etc.

Stacked Seating -

Discussion Space for open discussions and support.

Notice Wall -

Information regarding all the YMCA's campaigns and available services.

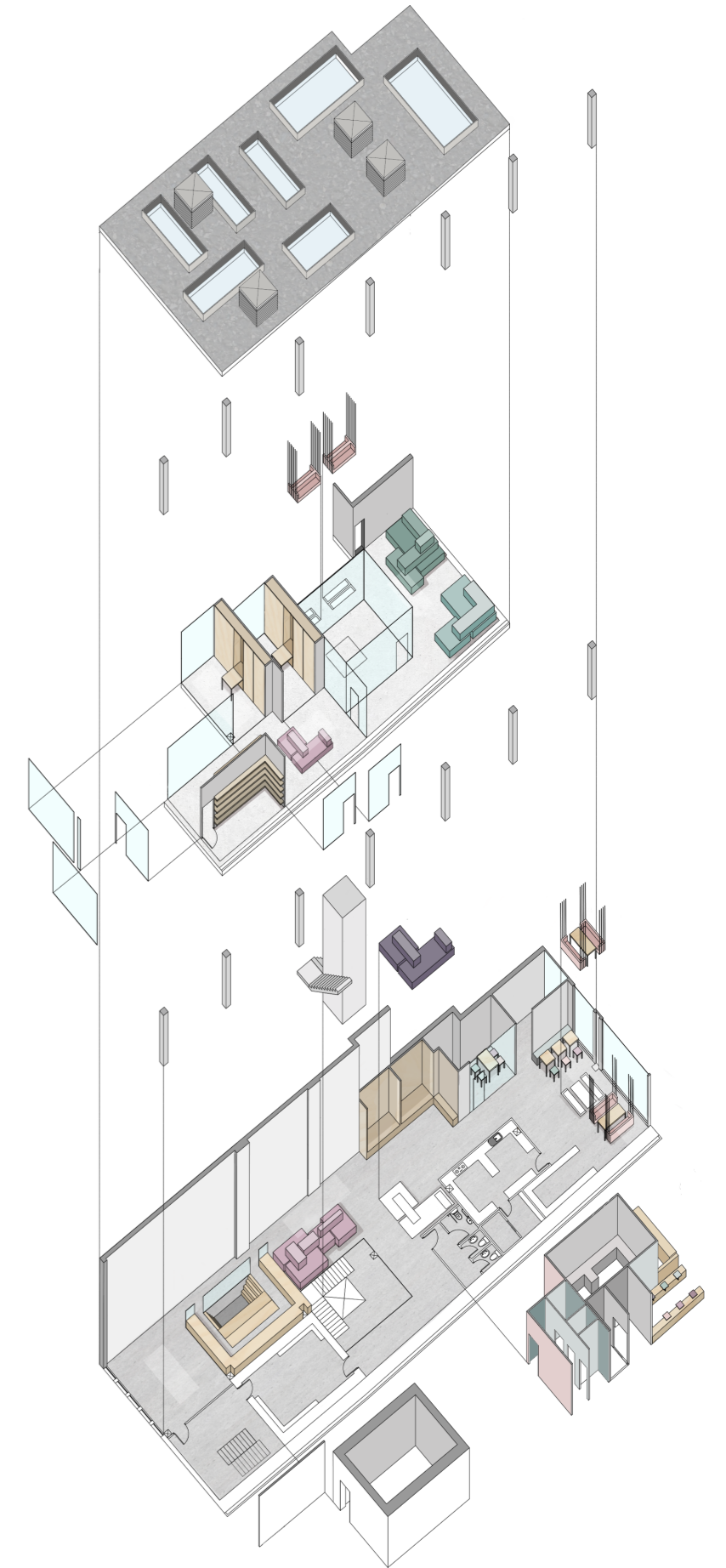
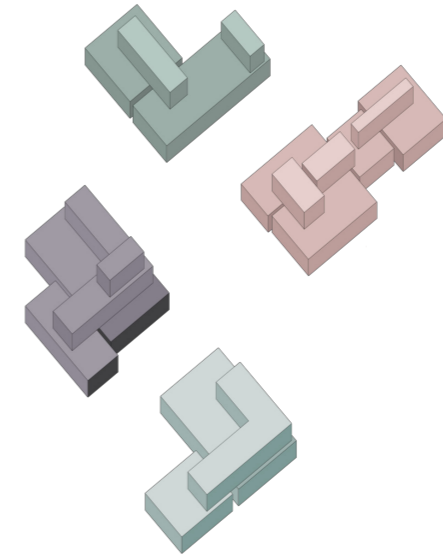
Community Cafe -

Generates income for the YMCA Charity.

Stacked Seating -

Discussion Space for open discussions and support. The Urethane foam padding makes the seating comfortable and encourages people to lounge on the seating. The stacking and changes in height aim to create a sense of 'privacy in plain sight' and allow individuals to receive support in a comfortable environment.

Precedent: Musashino Art University ZERO SPACE



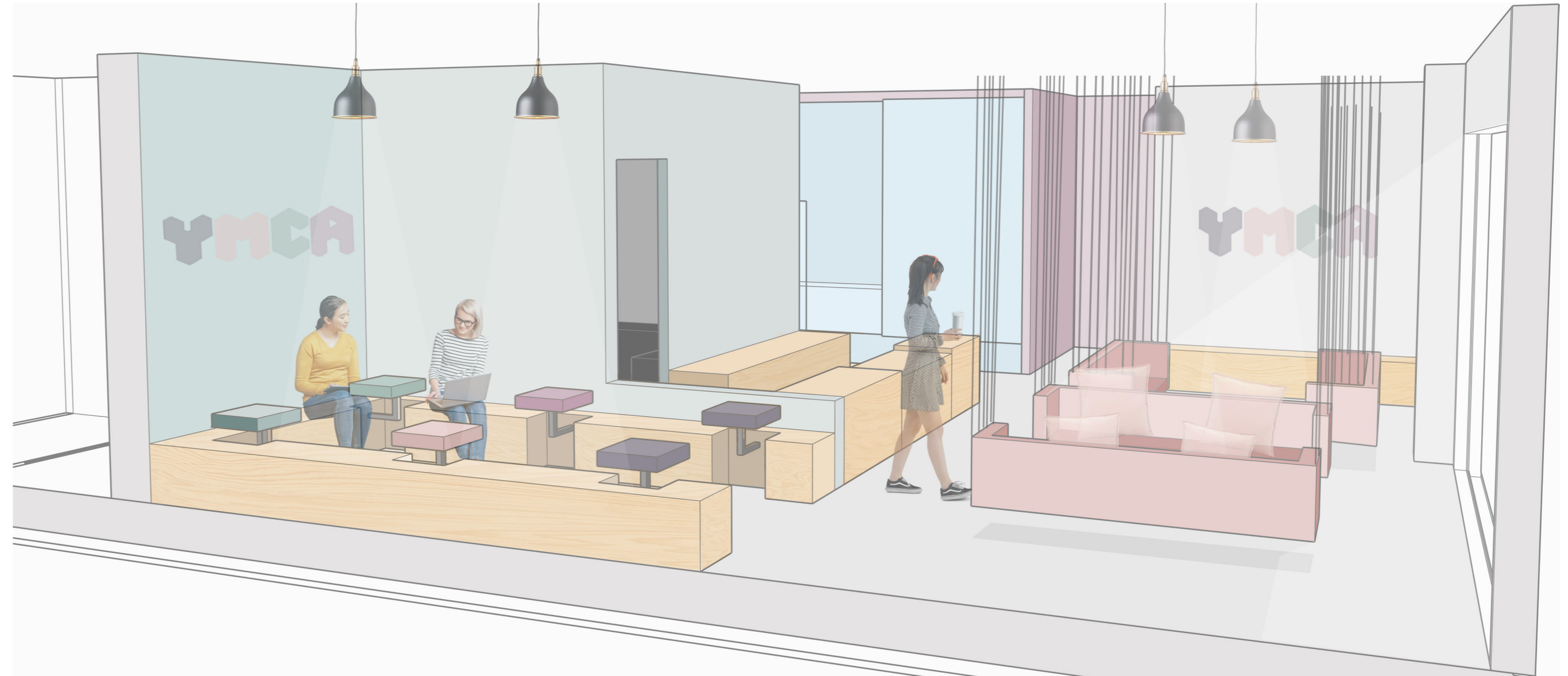
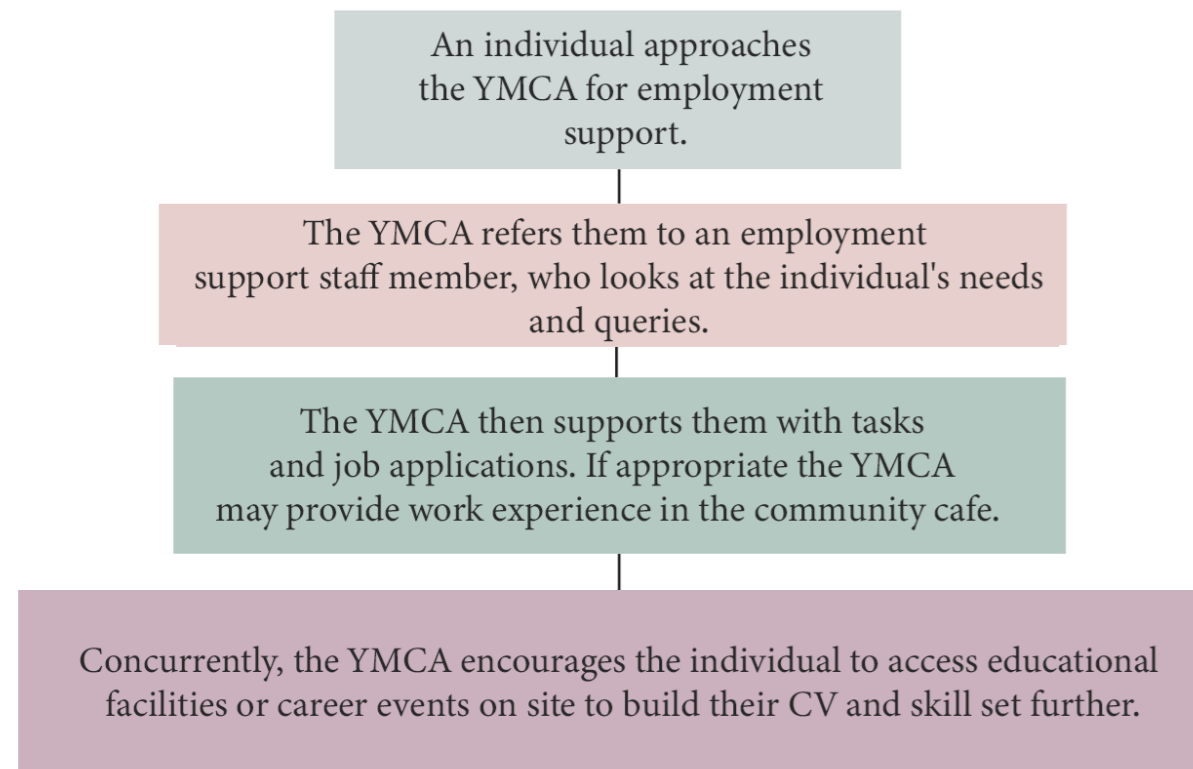
Community Cafe and Employment Support

Community cafe - that aims to integrate the charity and members of the public, whilst also creating job opportunities and work experience for young adults using the charity's employment services.

The implementation of a community cafe supports the Promoting Healthy and Safe Communities 91(a) and (b), allowing the YMCA service users to interact and build relationships with the public through employment. Alongside the Promoting Healthy and Safe Communities 92(c), due to the cafes generation of income which will consequently allow the YMCA to stay open.

Implements design strategies pertaining to Promoting Healthy and Safe Communities 8(92)(b), the "support the delivery of local strategies to improve health, social and cultural well-being for all sections of the community"(National Planning Policy Framework - Ministry of Housing, Communities & Local Government, 2019. P, 27).

Depending on the support required the YMCA's support staff may take the following steps:



Interior Perspective of the Community Cafe.

Studio and Educational Scheme

On the first floor the scheme has created three studio spaces that will be available for small start up businesses, specifically ones receiving funding from the YMCA, in an effort to help young entrepreneurs. The spaces will be equipped with multifunctional storage units that will allow the studios to be multifunctional, allowing a range of activities from office work to a specified arts and craft.

Studio three is the largest of the three spaces, that will host educational activities and lessons, focusing on the charities schemes surrounding re-entering education and gaining language skills and qualifications - in response to the data collected from Newcastle's demographics. Educational talks and career advice on topics such as - applying for jobs, creating CV's and gaining new qualifications will be given in the tiered seating area.

