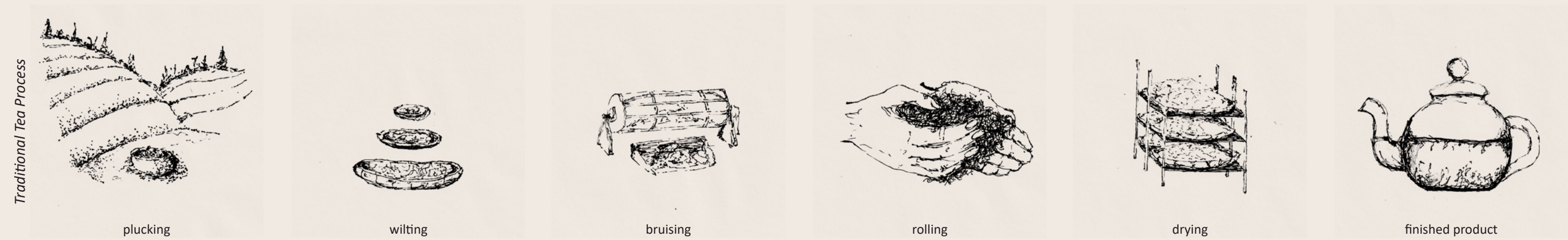




WESTGATE TEA-ASSEMBLE

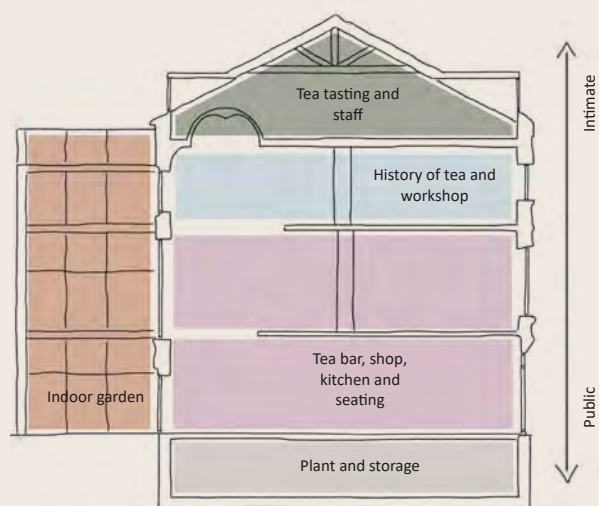
Amy Roberts



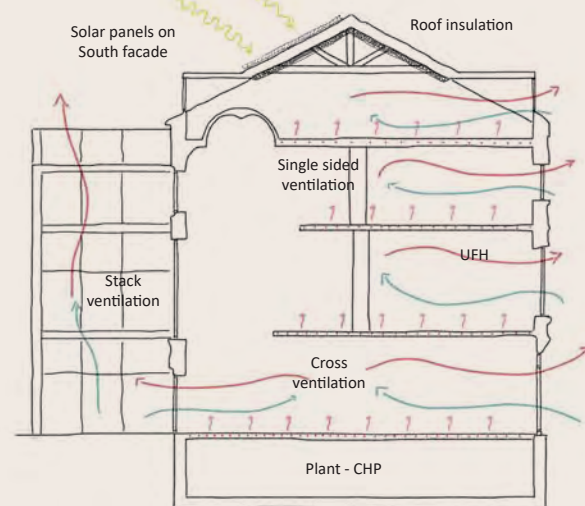
“Tea speaks a thousand languages and solves a million problems”

Westgate Tea-Assemble provides an experience unique in Newcastle, reviving a long neglected grade II* listed building in a diverse multi-cultural area of the city centre. The sympathetic design preserves and draws on the building’s rich history of previous use and alterations over the years. It includes original ornate plasterwork and grand stairwell beneath a high-domed ceiling. Visitors to Westgate Tea-Assemble will appreciate this in a re-purposed vibrant space. Tea is an ancient beverage, drunk by millions

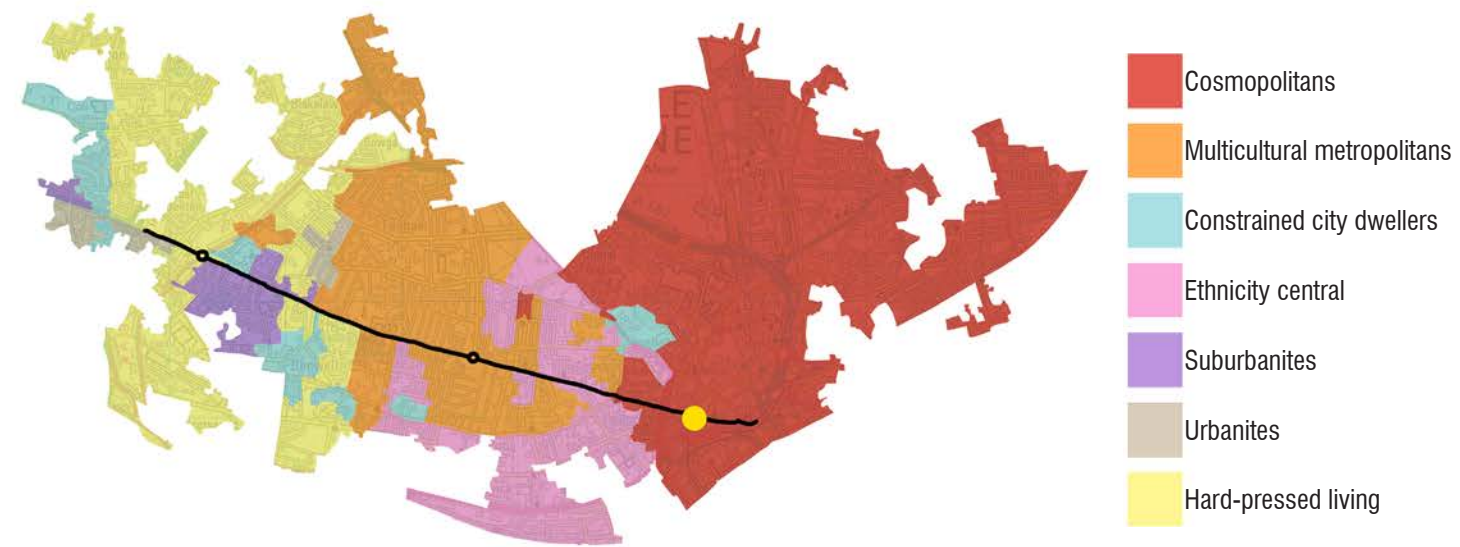
of people all over the world every day. But it is so much more than a drink; it is a ritual. Westgate Tea Assemble is a holistic tea experience, offering social, reflective and intimate spaces. Enjoy a quick cuppa on the go or a leisurely afternoon tea experience. Discover all about this fascinating product or bask in the serene atmosphere and surroundings. Shop for your favourite teas and accessories. Even create a one-of-a-kind blend. Westgate Tea-Assemble welcomes and unites everyone in the communi-tea.



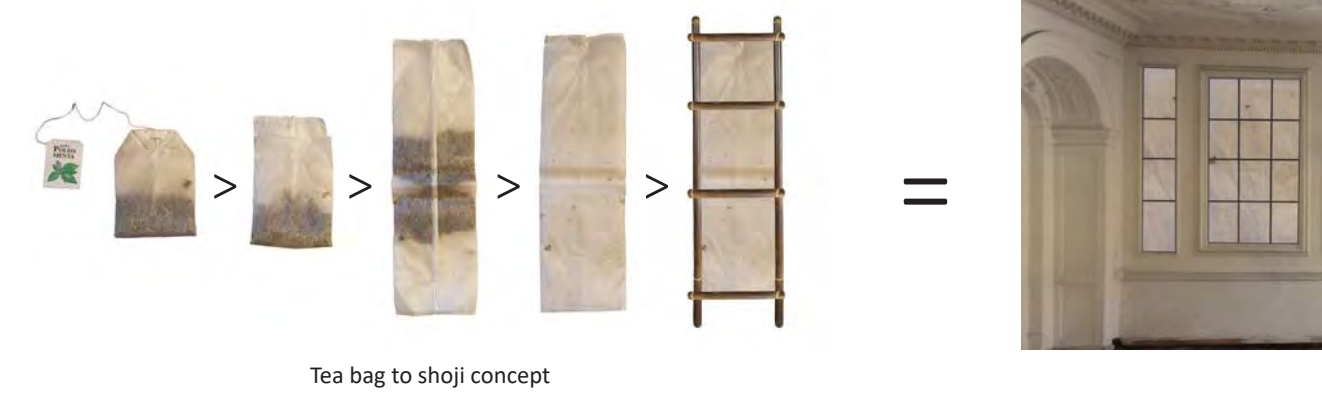
Spatial strategy



Environmental strategy



Ethnographic investigations of Westgate Road



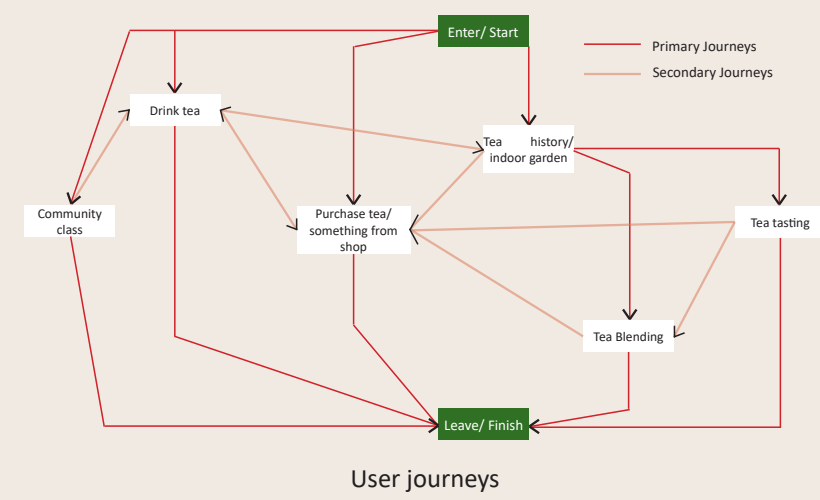
Tea bag to shoji concept



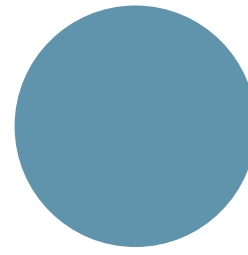
A. Short section NTS



B. Long section NTS



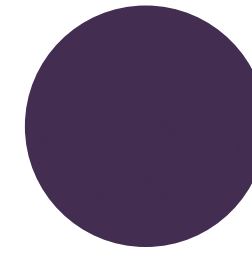
engineered vanilla oak - herringbone



pastel blue powder coated steel - RAL 5024



shoji paper



laminate faced MDF - Formica cassis



birch plywood



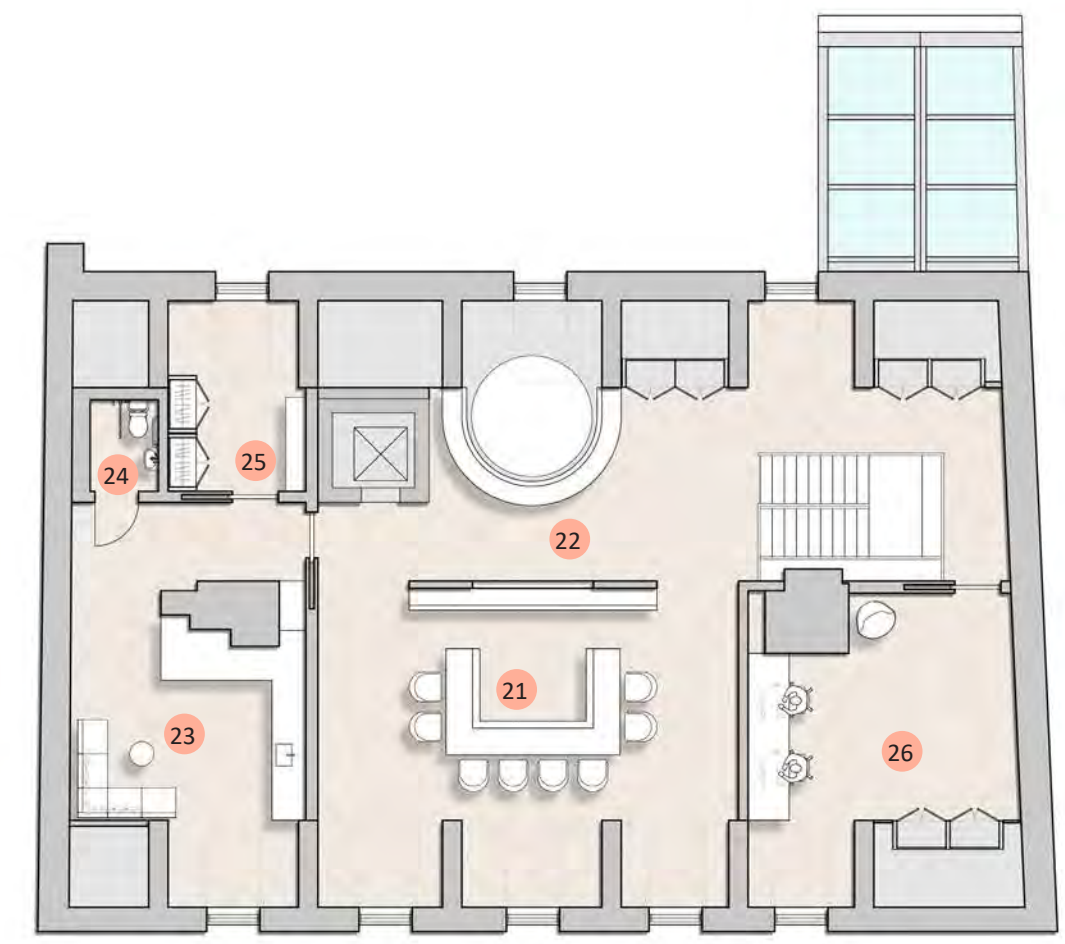
reclaimed terracotta tiles



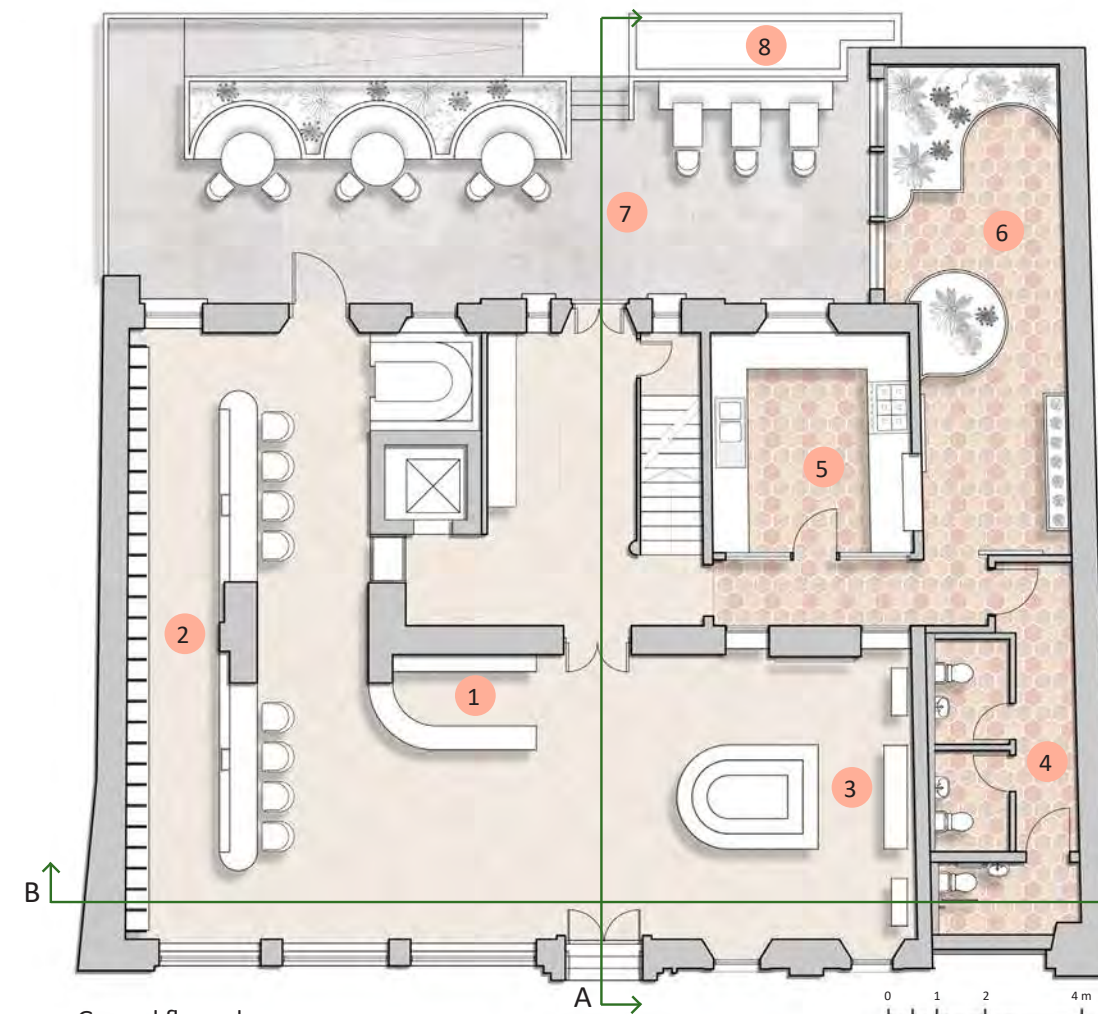
Domus biscuit tile - Dune DFZK 02



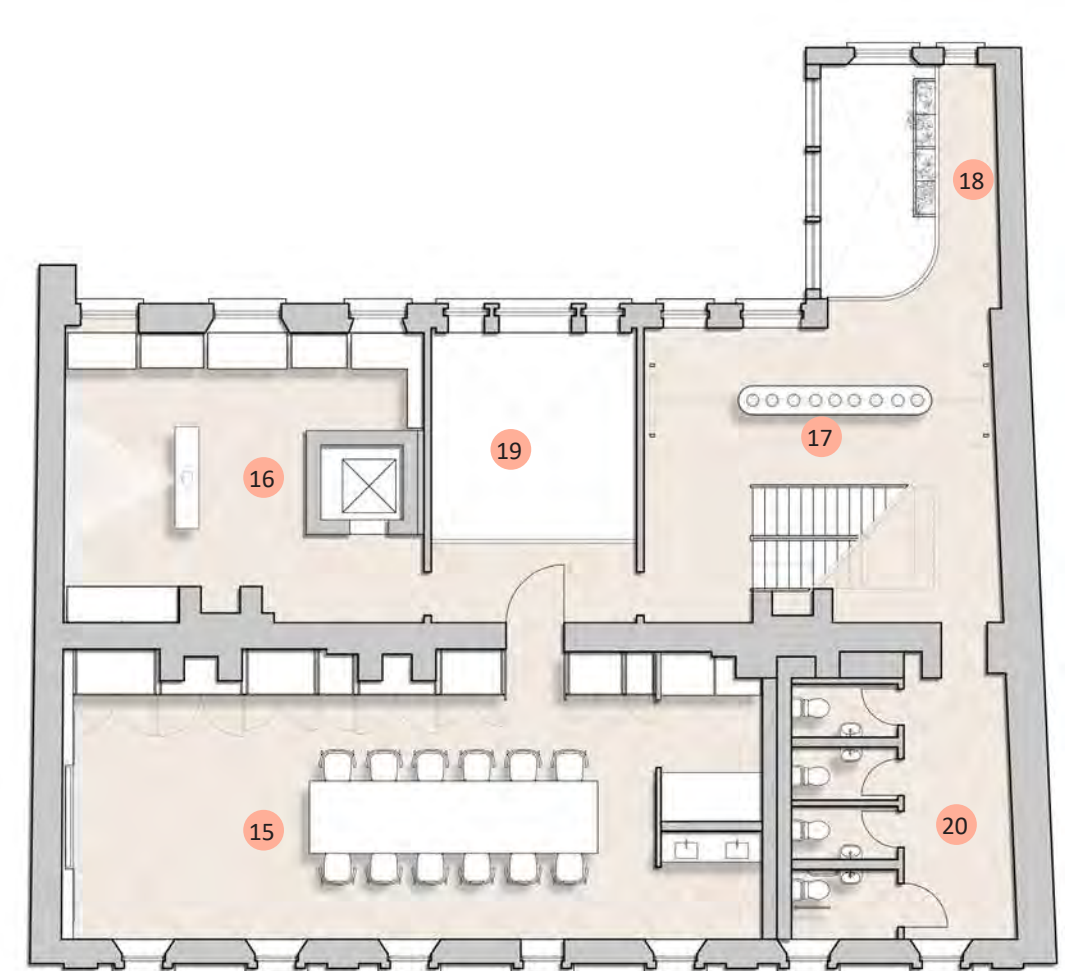
First floor plan



Third floor plan



Ground floor plan



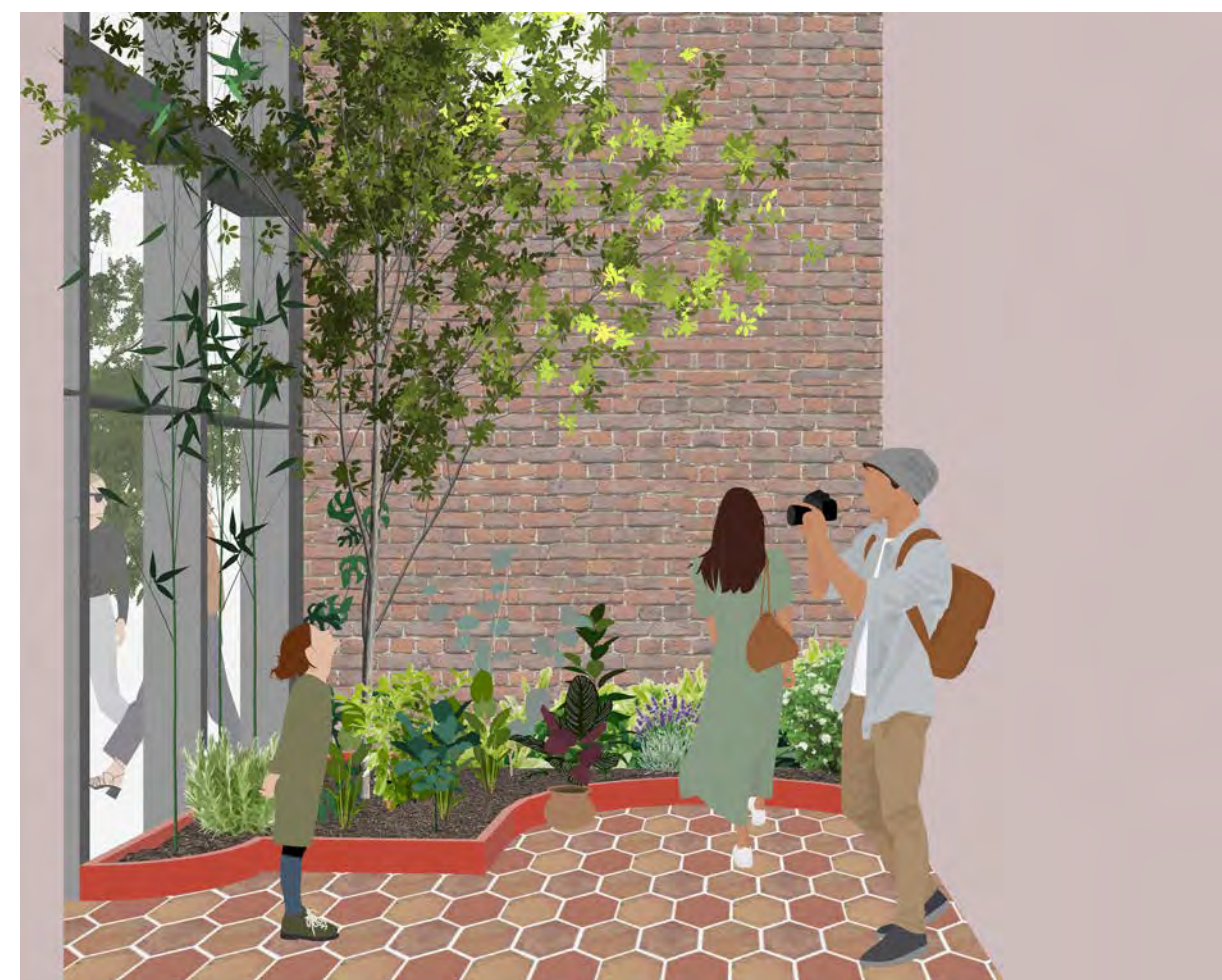
Second floor plan

- 9. seating area grand room
- 10. seating area overlooking indoor garden
- 11. Japanese style tea room
- 12. void overlooking tea bar
- 13. void
- 14. storage

- 21. tea tasting bar
- 22. seating around top of dome
- 23. staff break out room
- 24. WC
- 25. changing space
- 26. staff office

- 1. welcome desk and point of sale
- 2. tea bar with double height shelving
- 3. shop
- 4. WC
- 5. kitchen
- 6. indoor garden
- 7. outside seating
- 8. rain water collection

- 15. tea blending and community workshop space
- 16. tea history with artefacts and rolling video of tea making process
- 17. tea history with dried botanicals for touch and smell
- 18. balcony over indoor garden
- 19. void over grand stairwell
- 20. WC

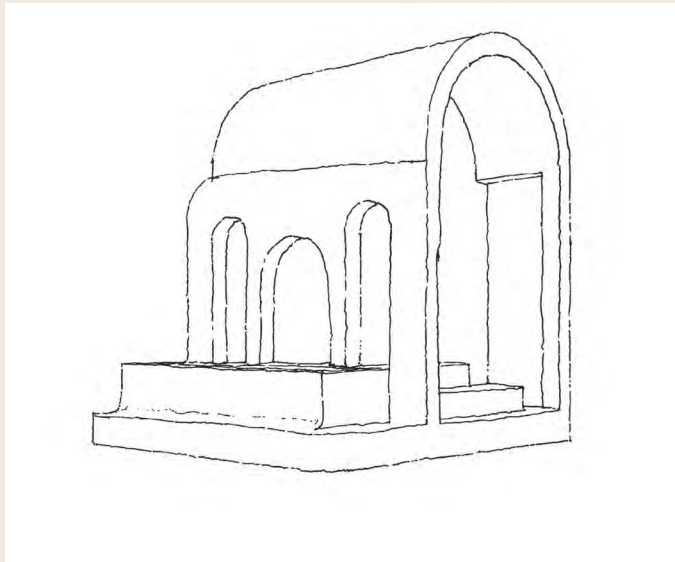


BRINGING THE COMMUNI-TEA
TOGETHER



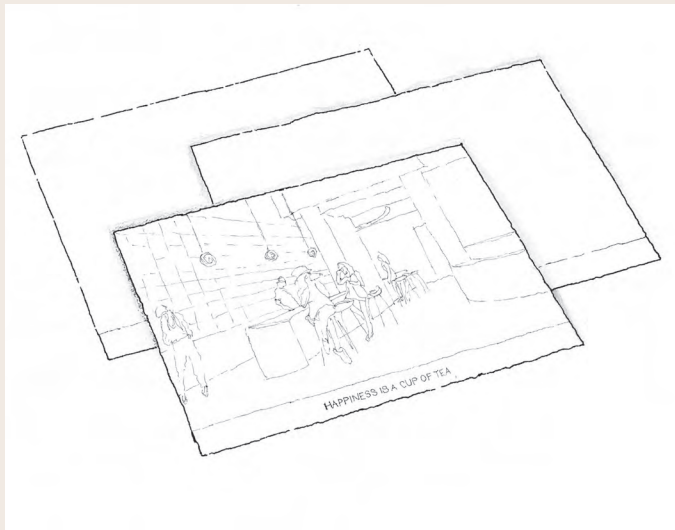
Westgate Tea-Assemble

Central hub of *activi-tea*



Pop-up Pavilion

Relax - Connect - Reflect
Spend time within the pavilion, inspired by
Westgate Tea-assemble



Tea Postcards

Send to a friend or neighbour; check in
and arrange to get together over a cup of tea



Concept massing model for pavilion design, casted with cement



Concept collages, drawing inspiration from geometry and form within the Westgate Tea-Assemble design scheme



Pop-up pavilion design, to be erected within a public park in Newcastle



Positivi-tea themed postcards with visuals from Westgate Tea-Assemble. Visitors are encouraged to take one