

THE CERAMICS CAFE

@ The YMCA Pilgrim Street

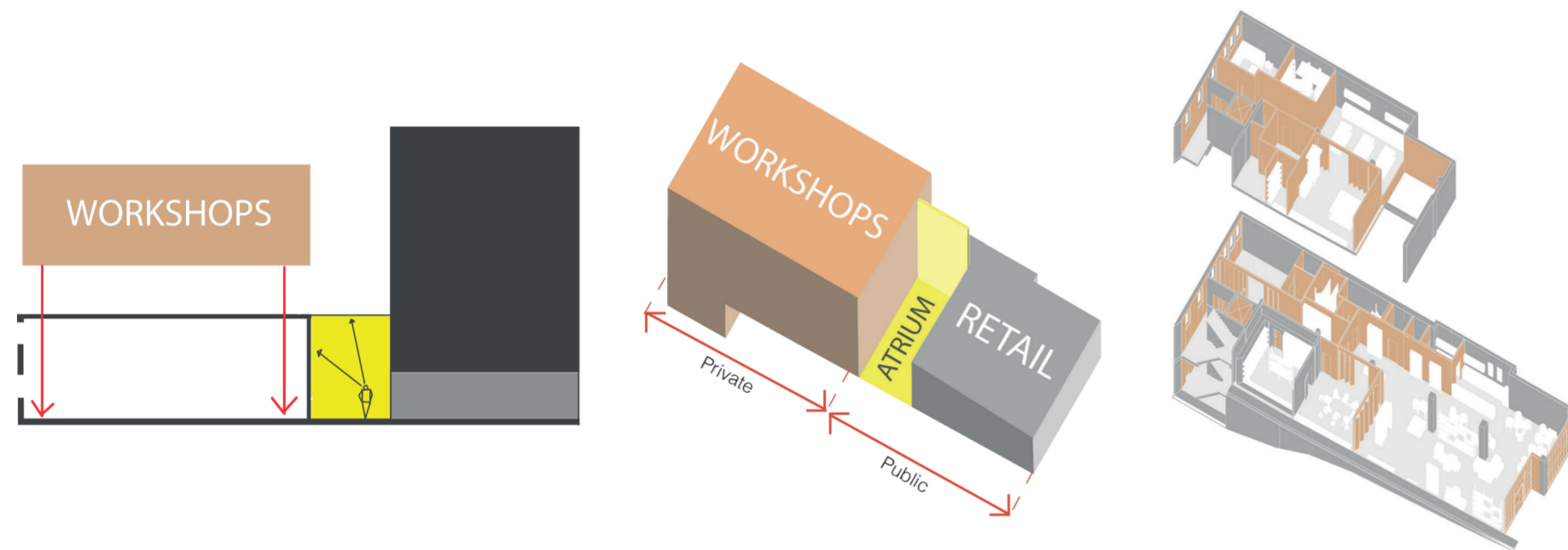
BRIEF: Design a charity shop provision for YMCA. The store will be a Destination Space that will redefine the traditional charity shop and will skill up young people through creative endeavour.

The scheme introduces ceramics workshops into the space, and provide all the facilities needed to create bespoke pottery from scratch, or repair donated pottery. Pottery is a great outlet for self expression and a valued skill for young YMCA members to learn.

Parties can rent a workshop and create their own pottery. The space will have a studio for a professional potter to create pieces to be sold in the shop, they can also teach YMCA members the skill.

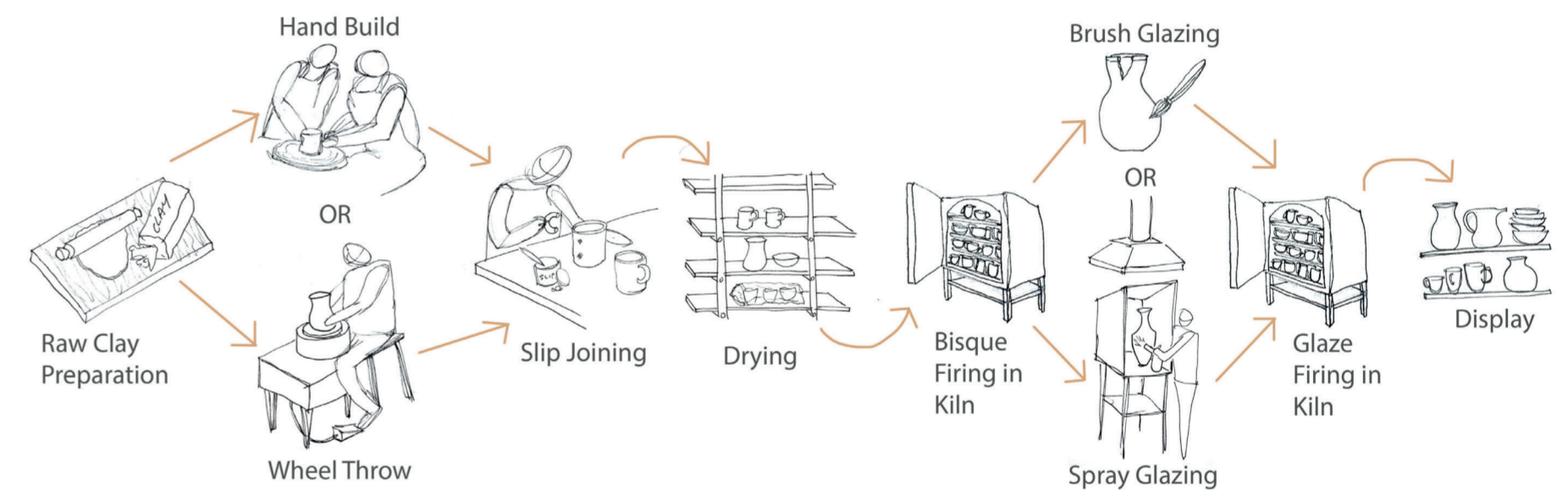
All work created on site can then be sold in the charity shop, along with donated pottery and supplies. A cafe space will provide further enterprise, while the store can be transformed into an exhibition space for events and showcases.

The fit-out focusses on being accessible to all, both physically and ethically. The workshops can be used by groups and individuals of any skill level, and creates an environment of inclusivity, learning and community.

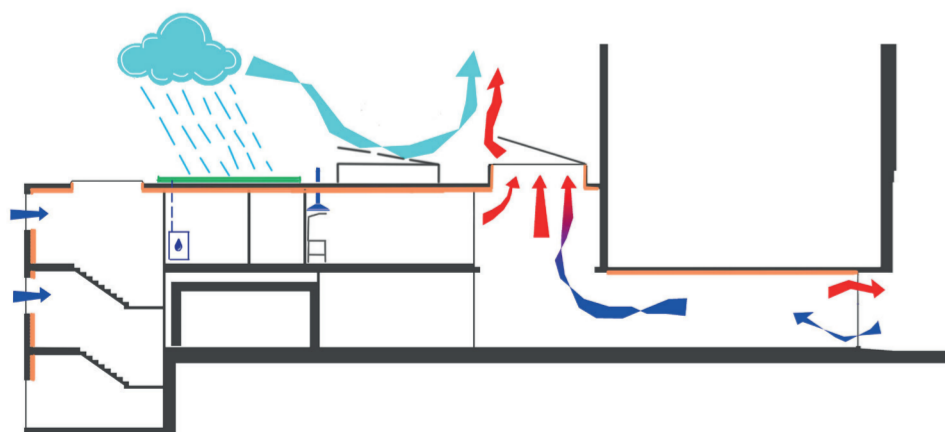


Spatial Concept - The ceramic workshops are grouped together in a single block in the space. A double height atrium creates a zone where store visitors can view the workshop block as a whole and be intrigued of what goes on in there.

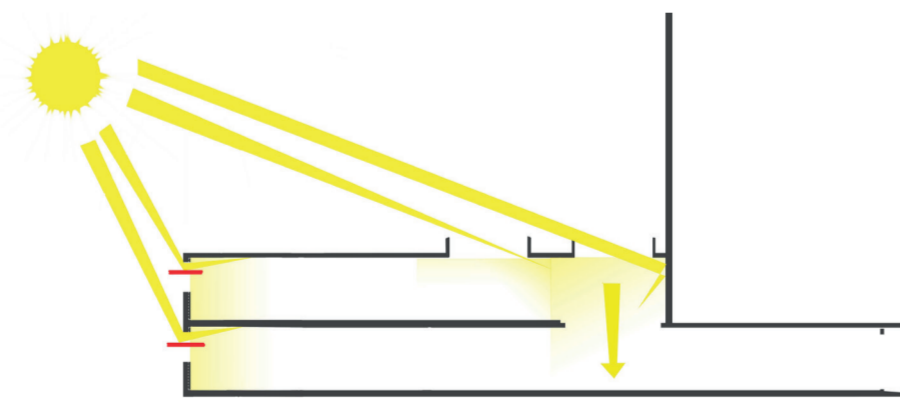
New Interventions (Orange) Vs Remaining Existing (Grey) ie stairs, strongroom, structure.



The workshops will have specialised facilities to accommodate each step of the ceramics process.



Open-able skylights, raised so wind can catch and help lift warm air from the space. Increased insulation at back wall. Mechanical ventilation of kilns & glazing booth. Rainwater collection from roof.



The site is in the shadow of the Commercial Union Building so to increase natural light in the space, skylights will be introduced to bring light into the centre of the site, and light shelves at the back wall will reflect light to the ceiling.

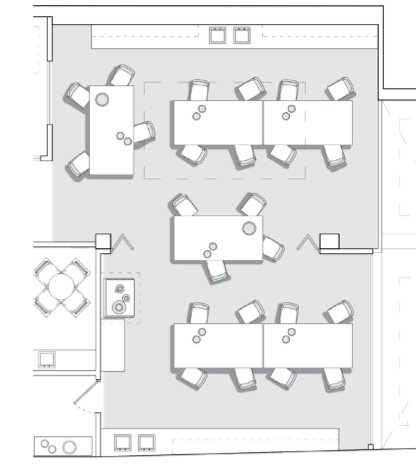


The site of 29-31 Pilgrim St benefits from public bus transport routes and the nearby Metro Station as well as Stack and Northumberland St to bring plenty of footfall.

RECONFIGURABLE SPACES



1st Floor



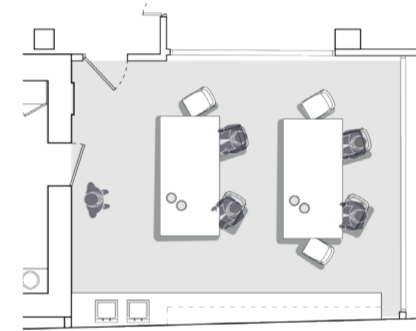
A- Upstairs workshops can be combined into one large collaborative space by opening up the folding doors.



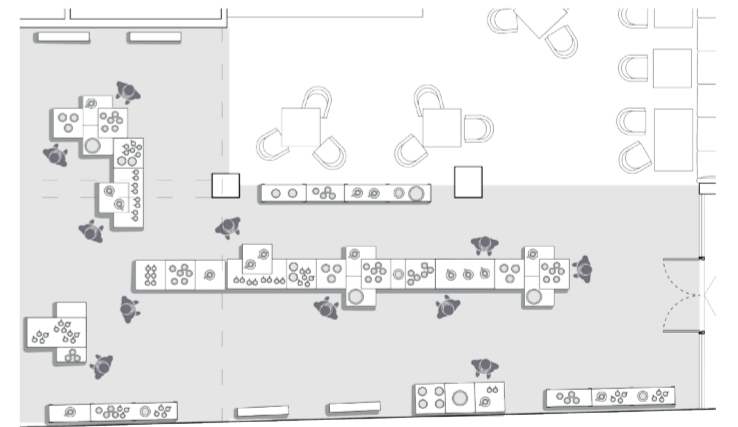
B- Folding doors in the YMCA space can be opened for more spacious activities when needed.



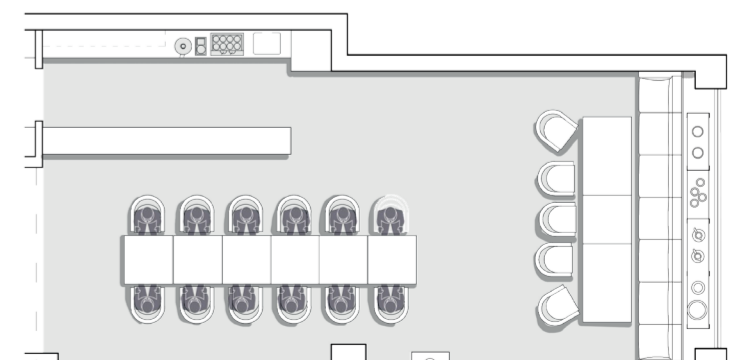
Upper Ground Floor



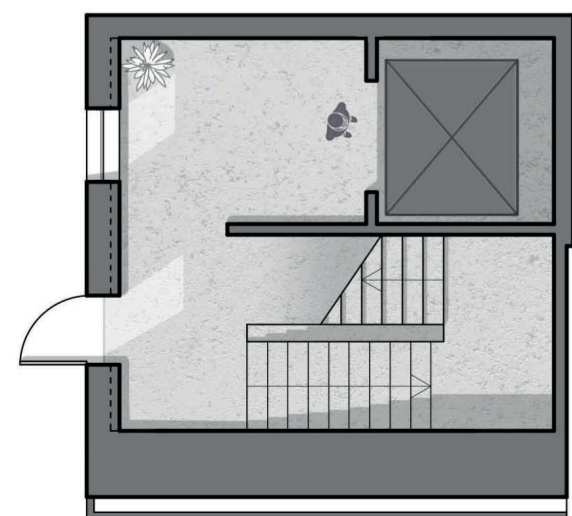
C- Multifunction space can be reconfigured to a classroom (tables stored in strongroom), Folding doors mean this can be extra space for exhibitions.



D- Shop floor display boxes are designed to be reconfigured for different uses, such as exhibitions.



E- Cafe tables can be moved together for events in the cafe, like pottery painting with afternoon tea.



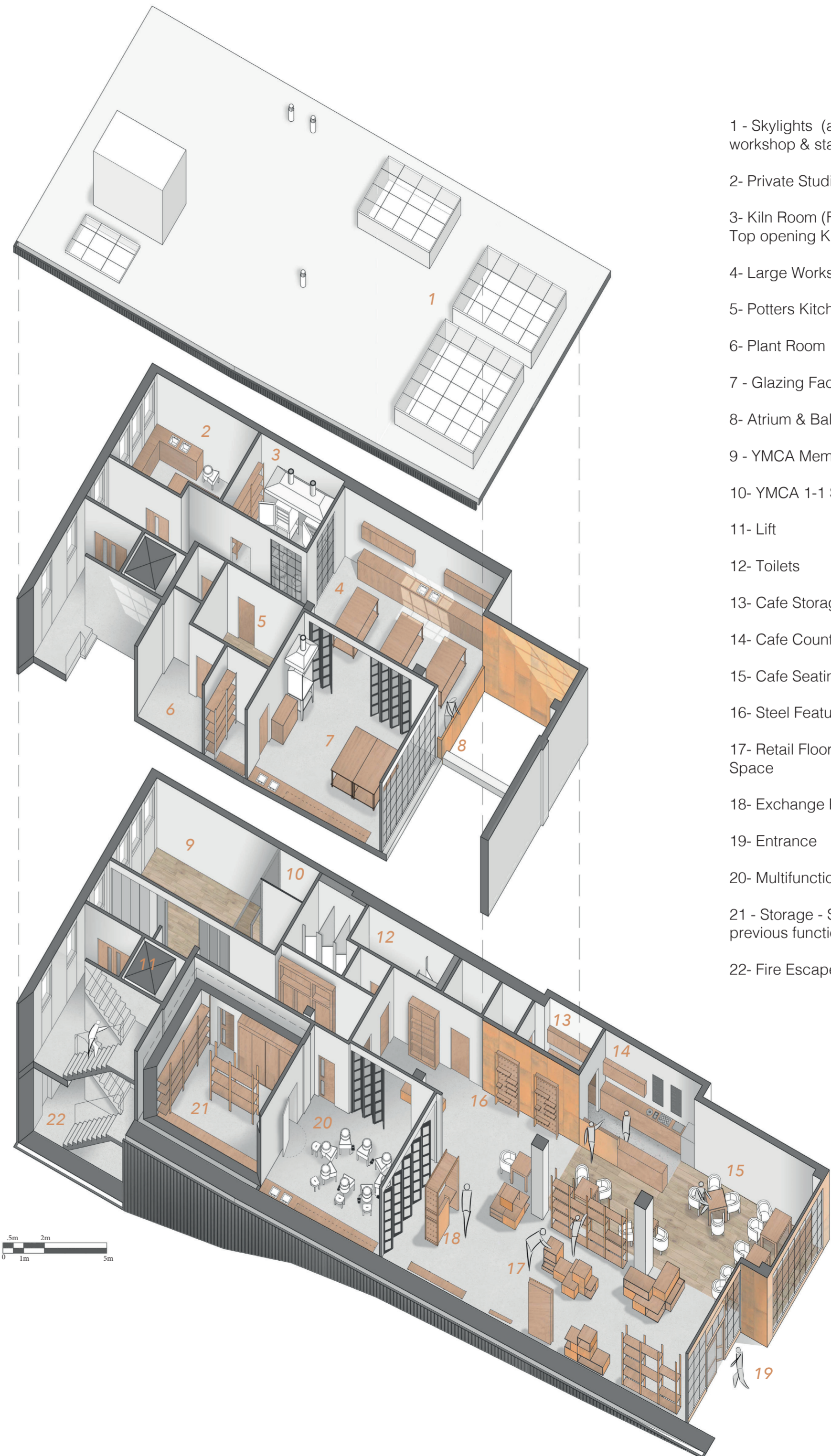
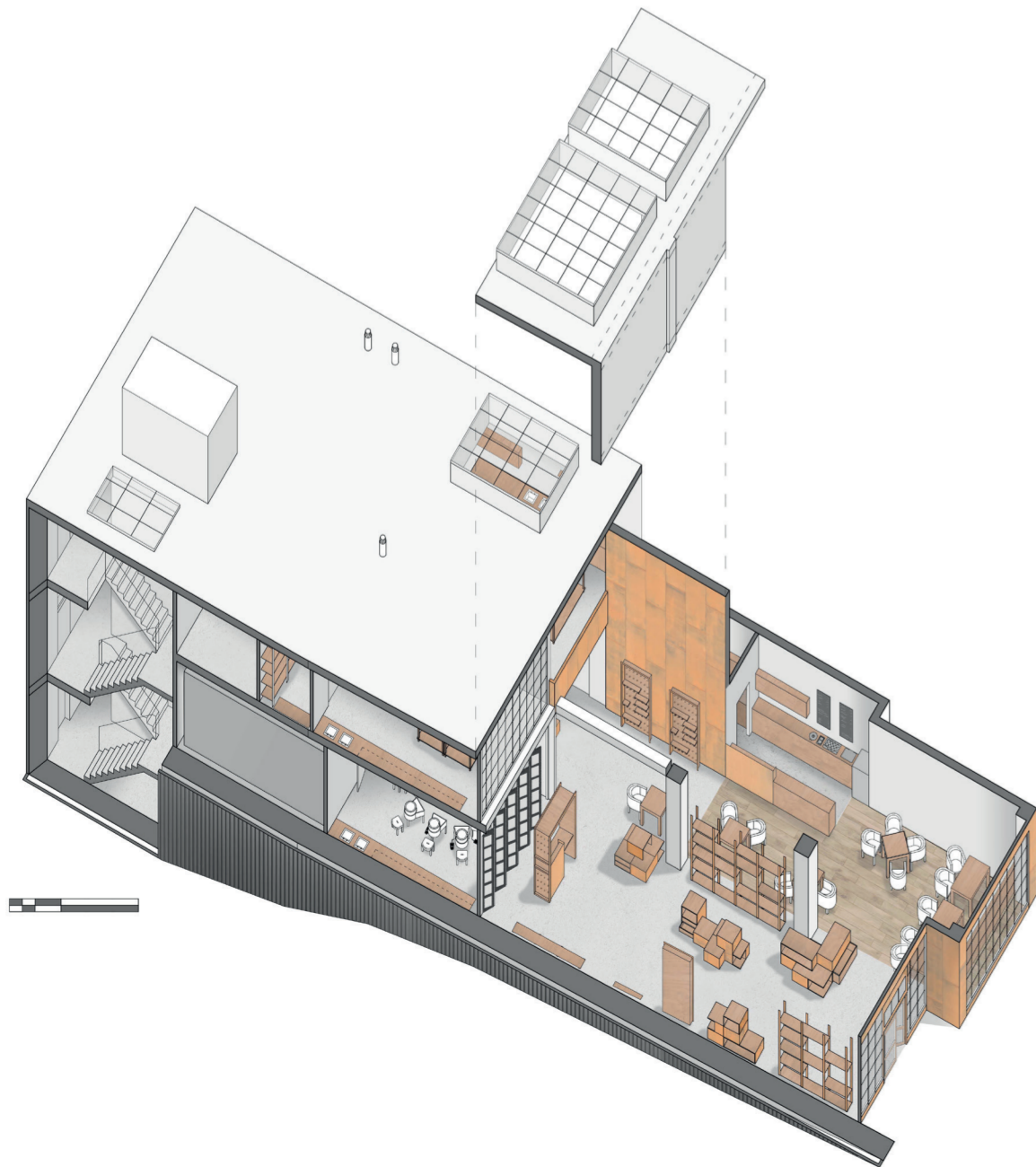
Lower Ground Floor



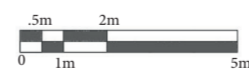
New Corten steel entrance to reflect interior language. Large display windows and entrance to encourage visitors to enter



New windows as modern, steel interpretation of existing, some existing windows blocked.

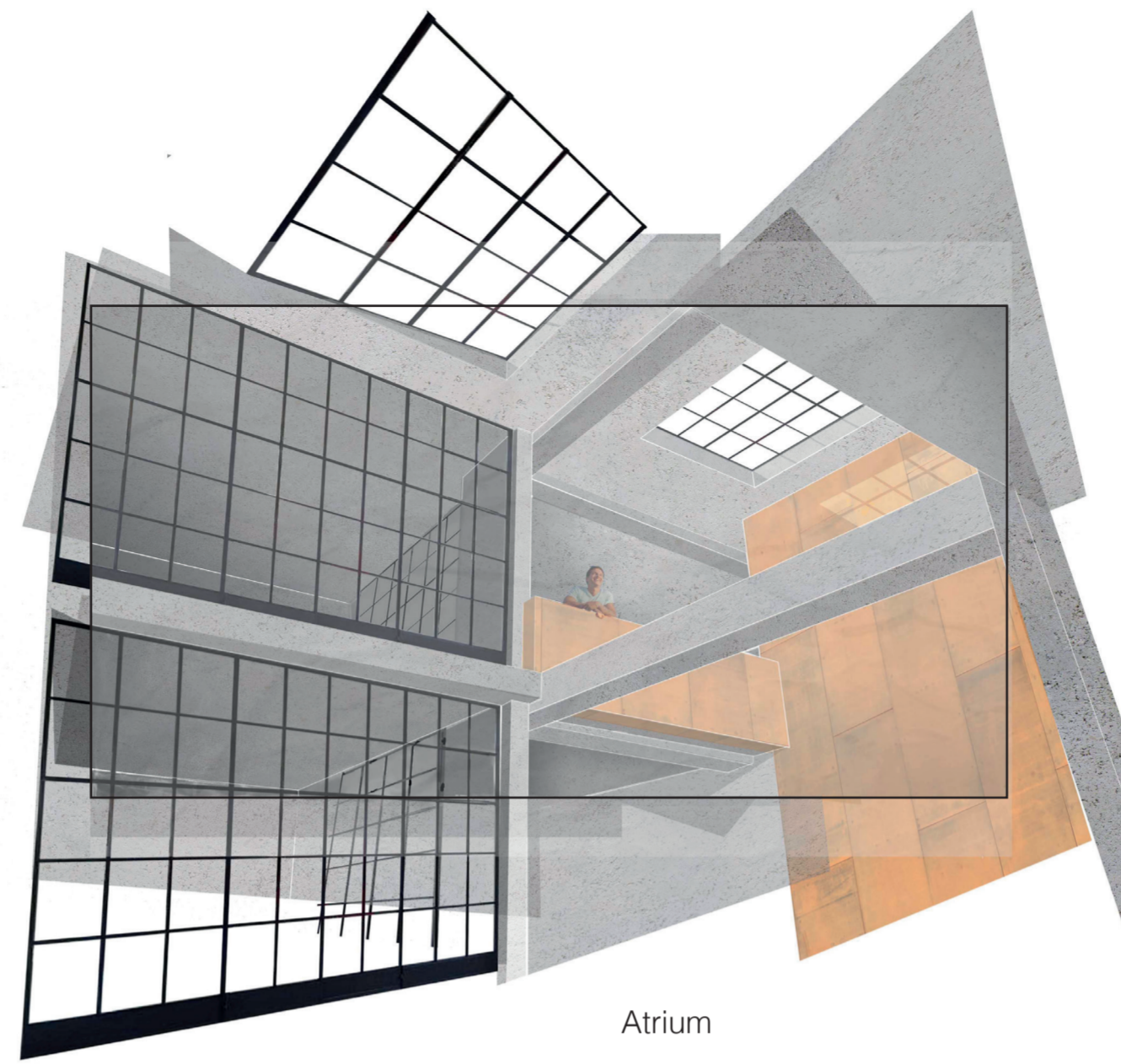


- 1 - Skylights (above atrium, workshop & stairwell)
- 2- Private Studio
- 3- Kiln Room (Front opening and Top opening Kilns)
- 4- Large Workshop
- 5- Potters Kitchenette
- 6- Plant Room
- 7 - Glazing Facilities & Store
- 8- Atrium & Balcony
- 9 - YMCA Member Zone
- 10- YMCA 1-1 Spaces
- 11- Lift
- 12- Toilets
- 13- Cafe Storage
- 14- Cafe Counter
- 15- Cafe Seating
- 16- Steel Feature Wall
- 17- Retail Floor / Exhibition Space
- 18- Exchange Point
- 19- Entrance
- 20- Multifunction / Classroom
- 21 - Storage - Strongroom from previous function as a bank
- 22- Fire Escape





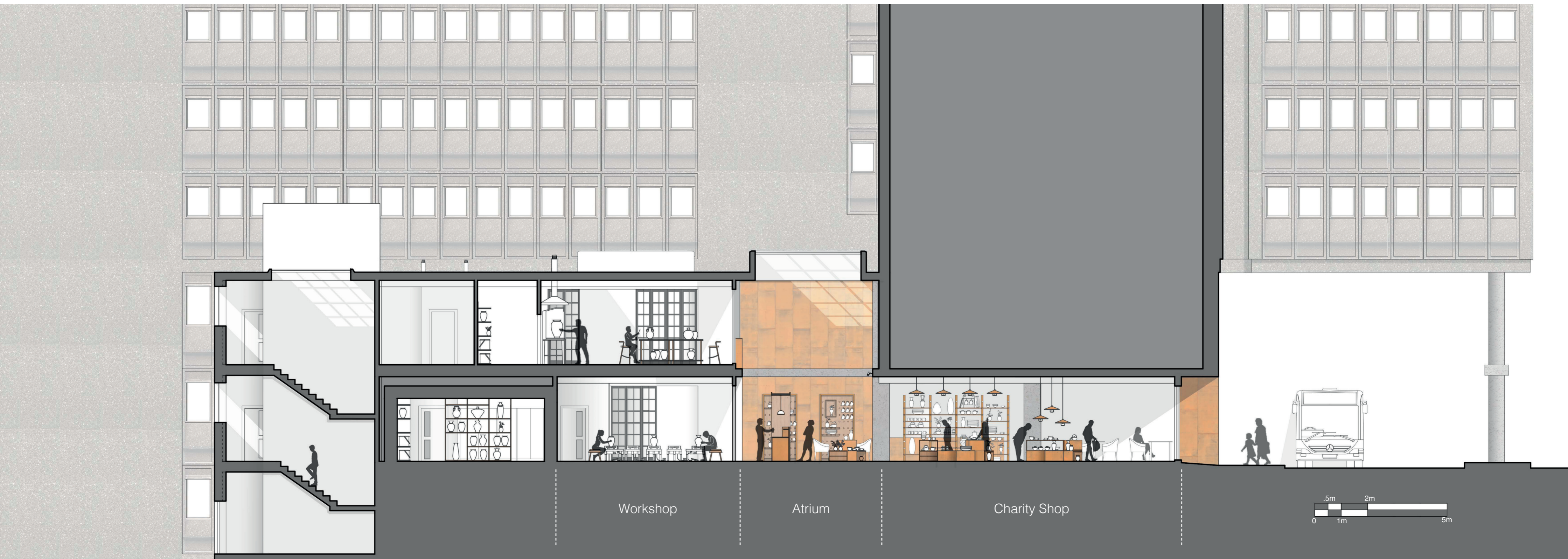
Charity Shop



Atrium



Workshop

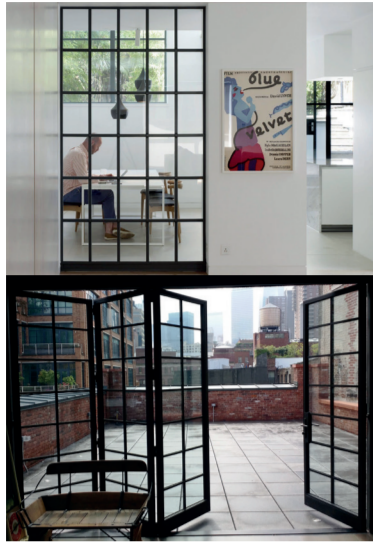


Workshop

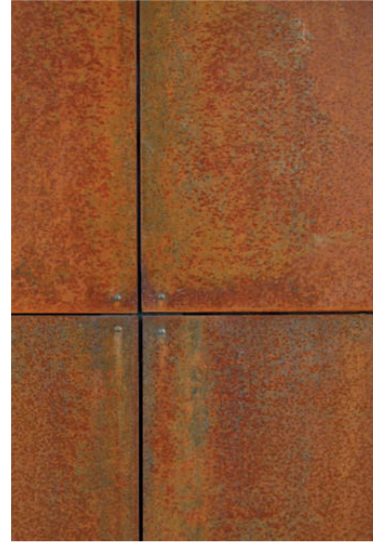
Atrium

Charity Shop





CRITTAL WINDOWS + BIFOLDING DOORS
Contemporary factory feel to creative environment



CORTEN STEEL CLADDING
Tactile accent to compliment texture of ceramics



BIRCH PLYWOOD
Very strong, durable, and pale in nature to compliment the harshness of the steel and ceramics.



EXISTING CONCRETE
Existing concrete frame of the building will be exposed and celebrated against the new insertion.



PET ACOUSTIC PANELS
Situated above the YMCA Zone and the Cafe, with a Noise Reduction Coefficient of up to 0.95.



Exchange Point **Reconfigurable Display Boxes** **Peg Board** **Adjustable Shelving**

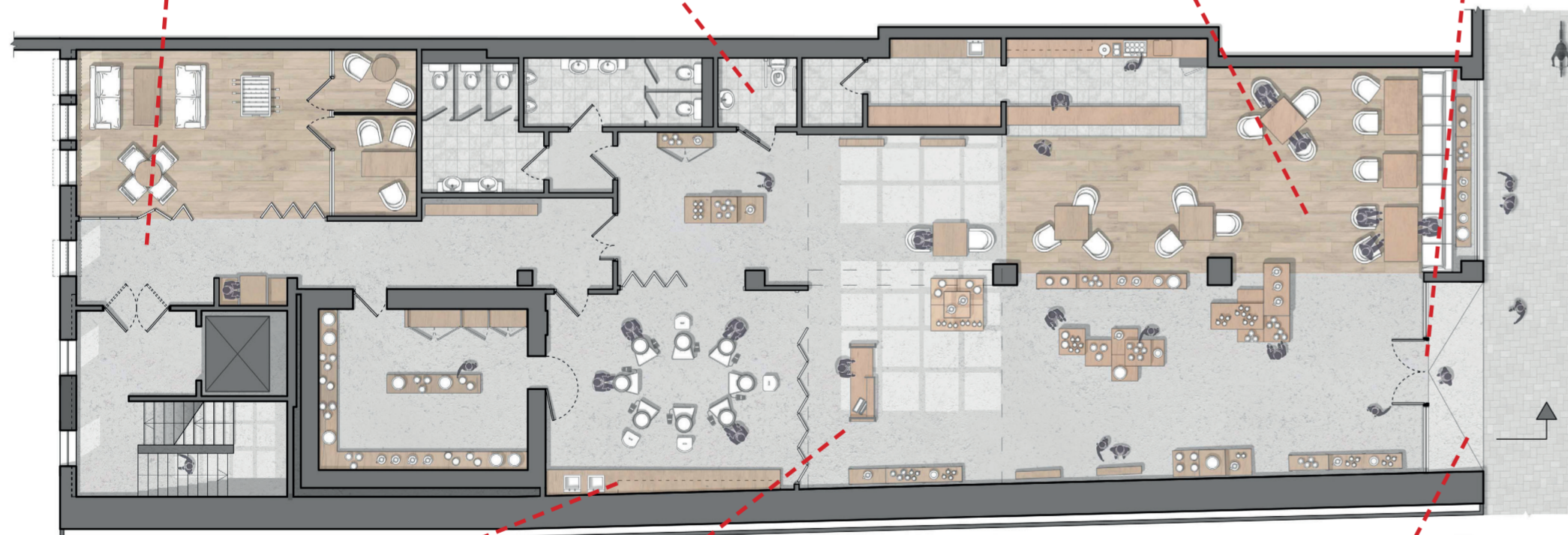
The store will have bespoke displays that allow for various sizes and types of pottery to be displayed on. Made from Birch and Corten Steel with integrated lighting.

All corridors have an unobstructed width larger than 1200mm, with plenty of areas wider than 1800mm for wheelchair passing places

Accessible WC

Floor surfaces vary in order to aid the visually impaired. Helps with way-finding and area distinction. Dull concrete and wood so glare and reflections don't hinder the visually impaired. Cafe / YMCA / Toilets distinguished from shop floor.

Powered Entrance Doors

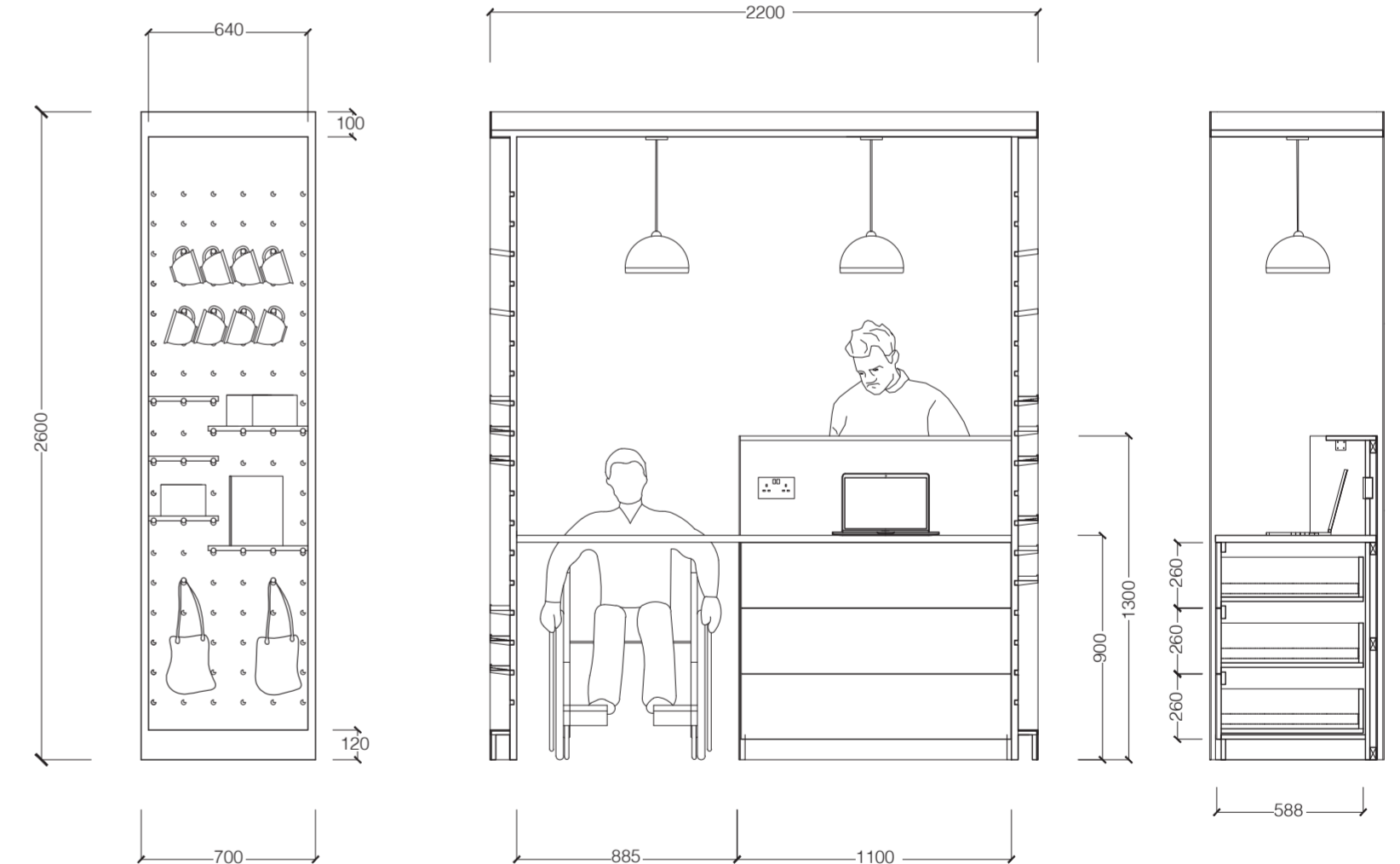


Counter-top and sink areas in workshops/classrooms will have clear space underneath at least 700mm high for wheelchairs

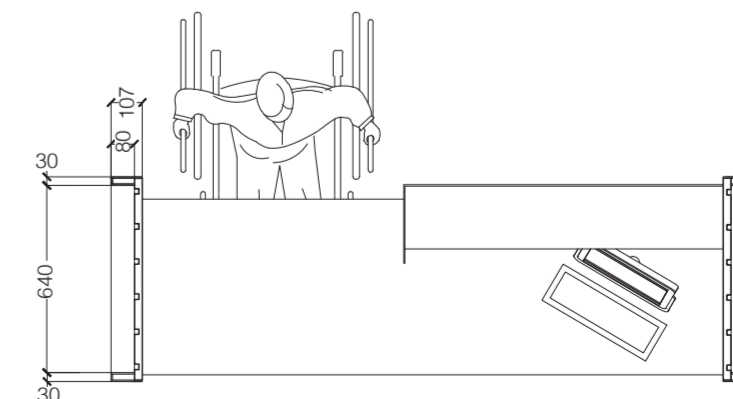
Induction Loop System at reception desk for the hard of hearing to tune into and help navigate the building, system also installed in the pottery classrooms and making spaces



Ramped Access to the space signified by **signposting** and a distinct change in colour and texture. This ramp has a rise of 100mm and a going of 1200mm meaning it satisfies the requirement of a 1:12 gradient



All elements of the fit out are considered. This welcome desk is designed to be comfortable for all, as well as being reconfigurable to display any sized items.



Pottery comes in all shapes and sizes and so shelving in the shop can be adjusted to various heights to accommodate.