



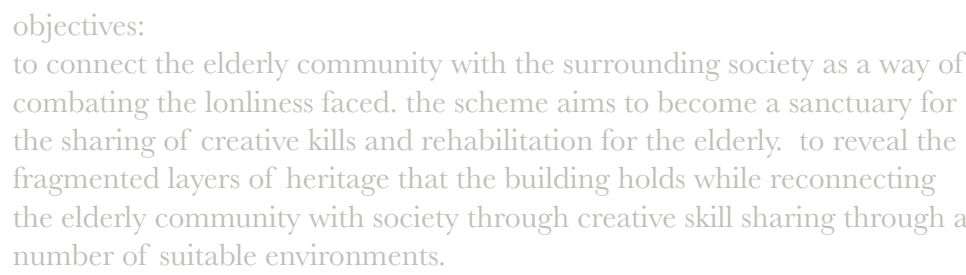
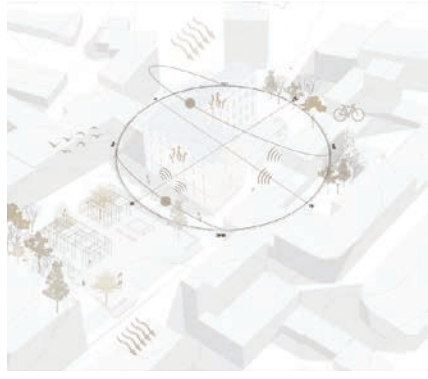
Fragments of the Past

the reactivation of a heritage building is particularly important to the scheme. the building should provide an economic, social and physical attribute to both the users living in the space and also the community. the intention of the scheme is to bring attention to the memories and heritage associated with the space, revealing the layers of the past. the scheme is targetted towards the loneliness faced by the elderly community, reconnecting them with the city.

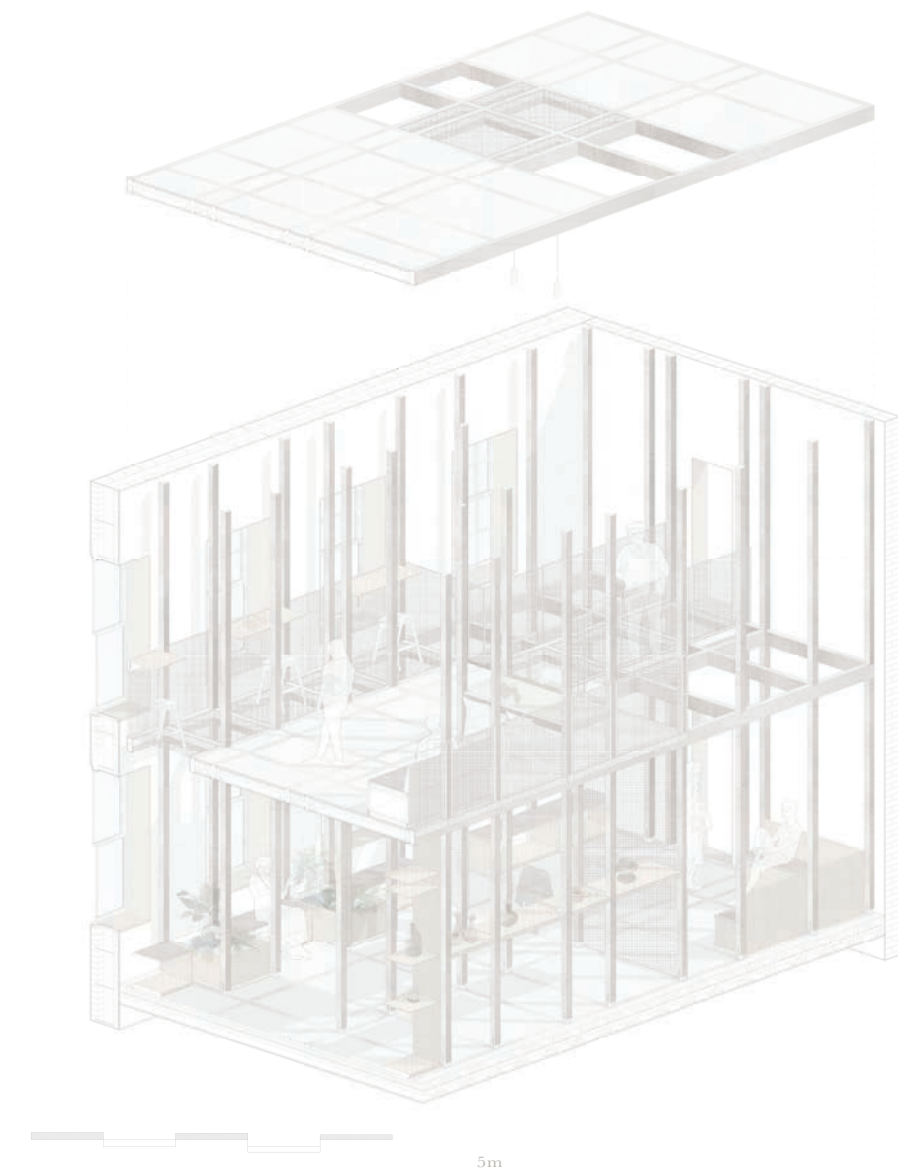
the existing site hosts a wealth of history, this is visible through the clear layering and fragmentation of the materiality and design of the building. particular interest is held within the facades as there is a fragmentation of placement of openings and thresholds- creating a closed off space.

“Architecture must seek to frame experience by engaging one’s sense memory through spatial and material fragments in order to connect space with the layers of consciousness.”

there is a clear link to the fragmentation of memories within the elderly community, the scheme looks to include both the layers of the existing heritage and the layers that are associated with the elderly users.



1-20 axonometric nts- depicting the ground and first floor of the creative hub



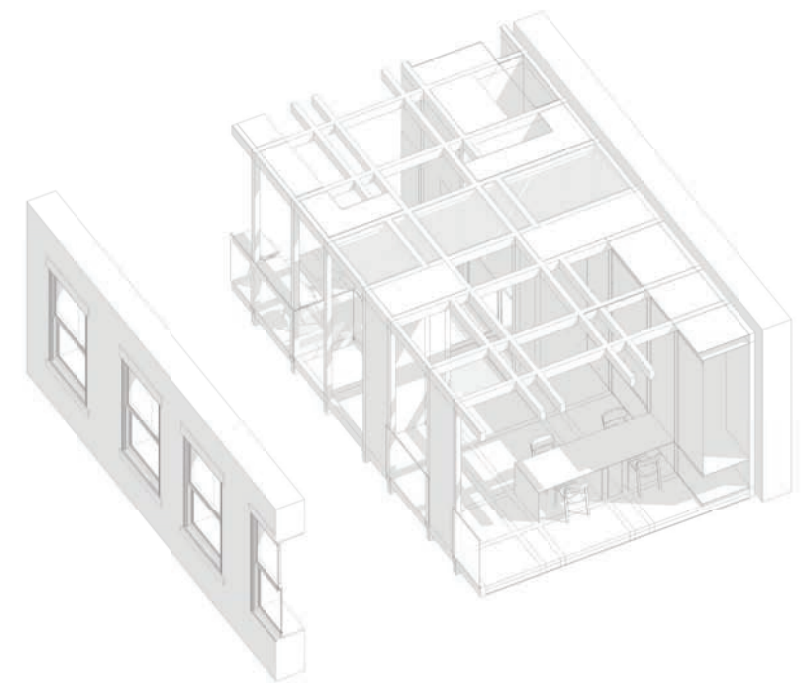
the grid system is a key motif used throughout the scheme. the repeating motif enables the residence to link the space to their memory, encouraging the sense of belonging. the motif is taken from the original geometries of the site.



2 creative nooks in the housing scheme



3 a public creative hub is connected to the housing scheme encouraging the elderly to interact and share creative skills



Brief Overview

the project looks at the UKs significant housing crisis, that is characterised by a chronic shortage of affordable homes. this crisis disproportionately affects vulnerable groups, including low income families, young people, and displaced individuals, such as refugees and those experiencing homelessness. the project seeks to create spaces that not only accommodate but celebrate the diversity of human experience. it challenges students to push the boundaries of conventional design, offering an opportunity to merge creativity, ethics, and functionality in shaping the future of interior spaces.

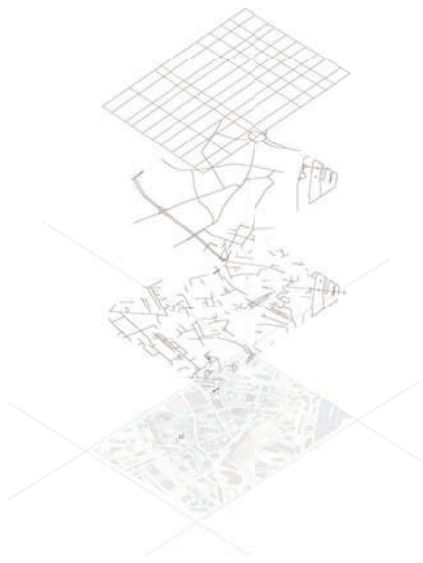


plaster model of the site

Site Analysis



fragmentation occurred in the wider surrounding area



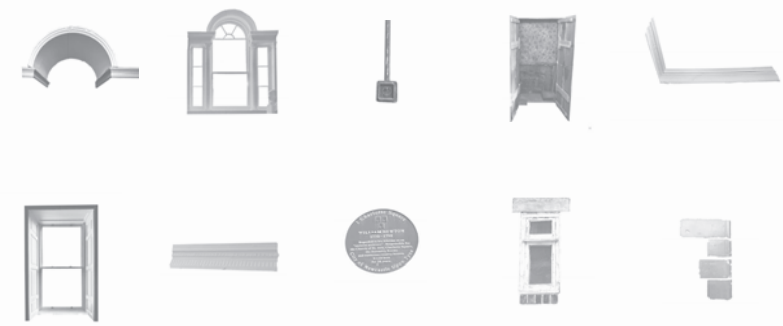
grid lines taken from the surrounding map



sewn site studies depicting the layered nature of the building, the variety of windows hold a narrative of adaption and layering of history in the site. each of the facades are sewn together clearly separated by materials and style.



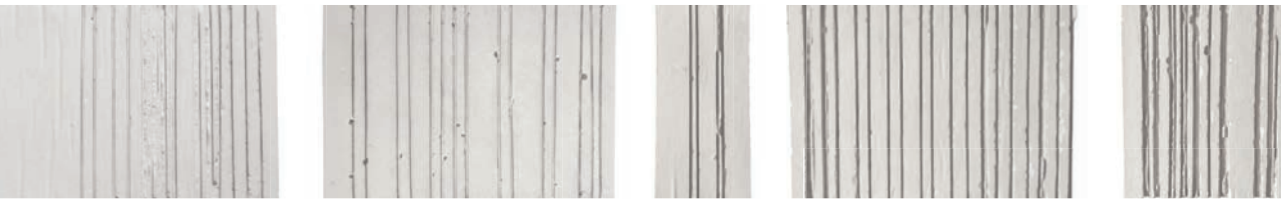
unfolding the facades collage understanding the fragmented layers of the history on site through the addition of facade styles



fragments of the existing site understood through 3d printed models

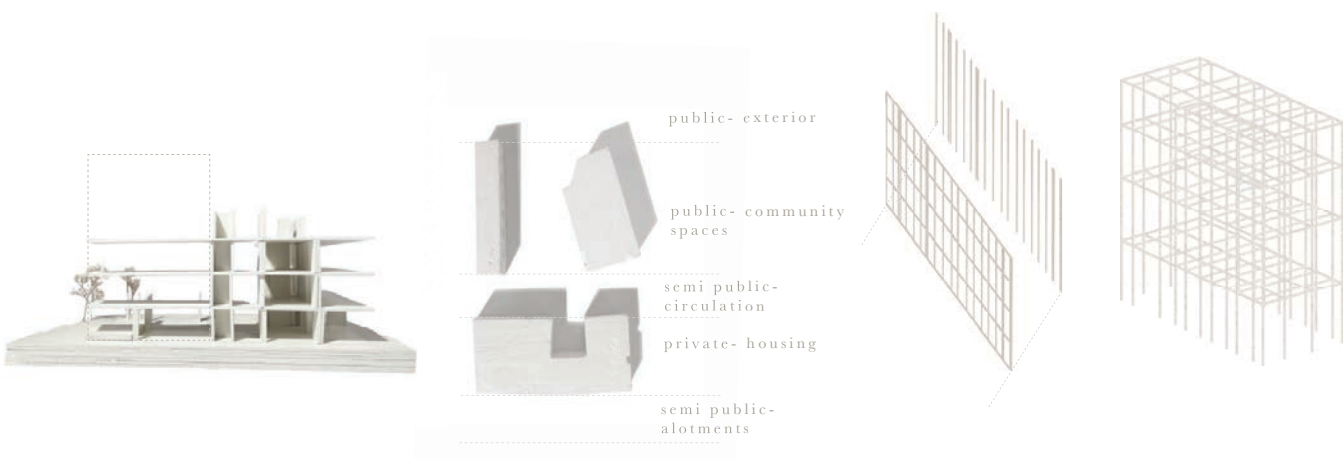
Site Response

particular interest is held within the facades as there is a fragmentation of placement of openings and thresholds-creating a closed off space. the façade holds many layers of the existing history (changes its undergone reflecting both society and the architectural language of the time. taking geometries from the fragmented nature of the facadesthis is then used as a motif that runs throughout the scheme



the geometries of the facades became a way of fragmenting the site and ordering the spatial qualities. the external layers of the site are reflected internally.

Tactics + Approach



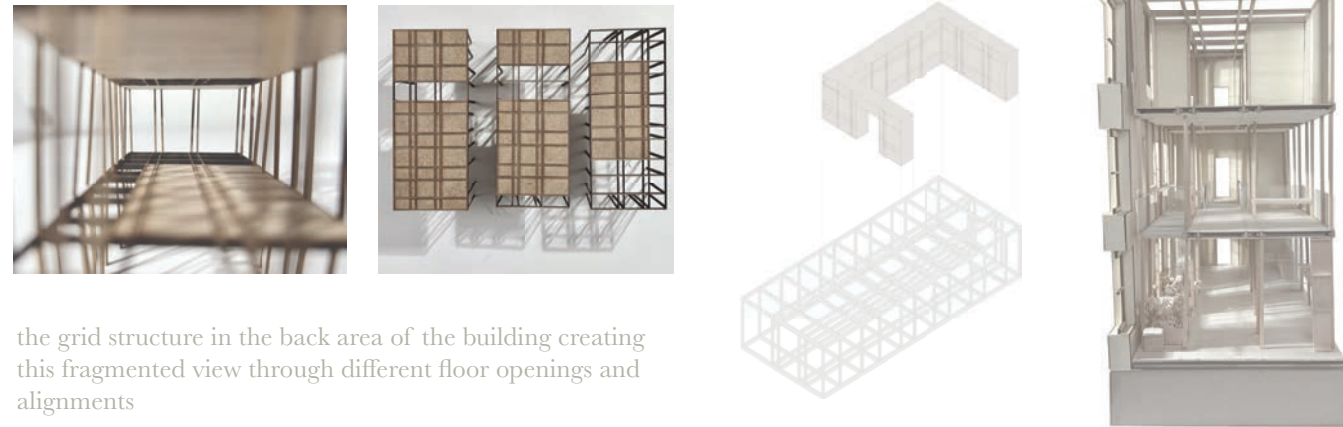
removal of the back section of the building allows for a new intervention and layer to be added to the space. the back building is most suitable for this approach as it is built later therefore lacks visual heritage characteristics such as the cornicing

this fragmented motif is seen both vertically and horizontally. creating these gaps and openings through the spaces



the views through the space become fragmented and layered reflecting the idea of fragmented memories of the elderly and the site both vertically and horizontally

conceptual weaving depicting the idea of different planes and layers that are fragmented on top of one another through the space. the thicker elements being the grid with the thin elements being the furniture placed within



the grid structure in the back area of the building creating this fragmented view through different floor openings and alignments

third

communal living zone
elderly residential
family creative space

second

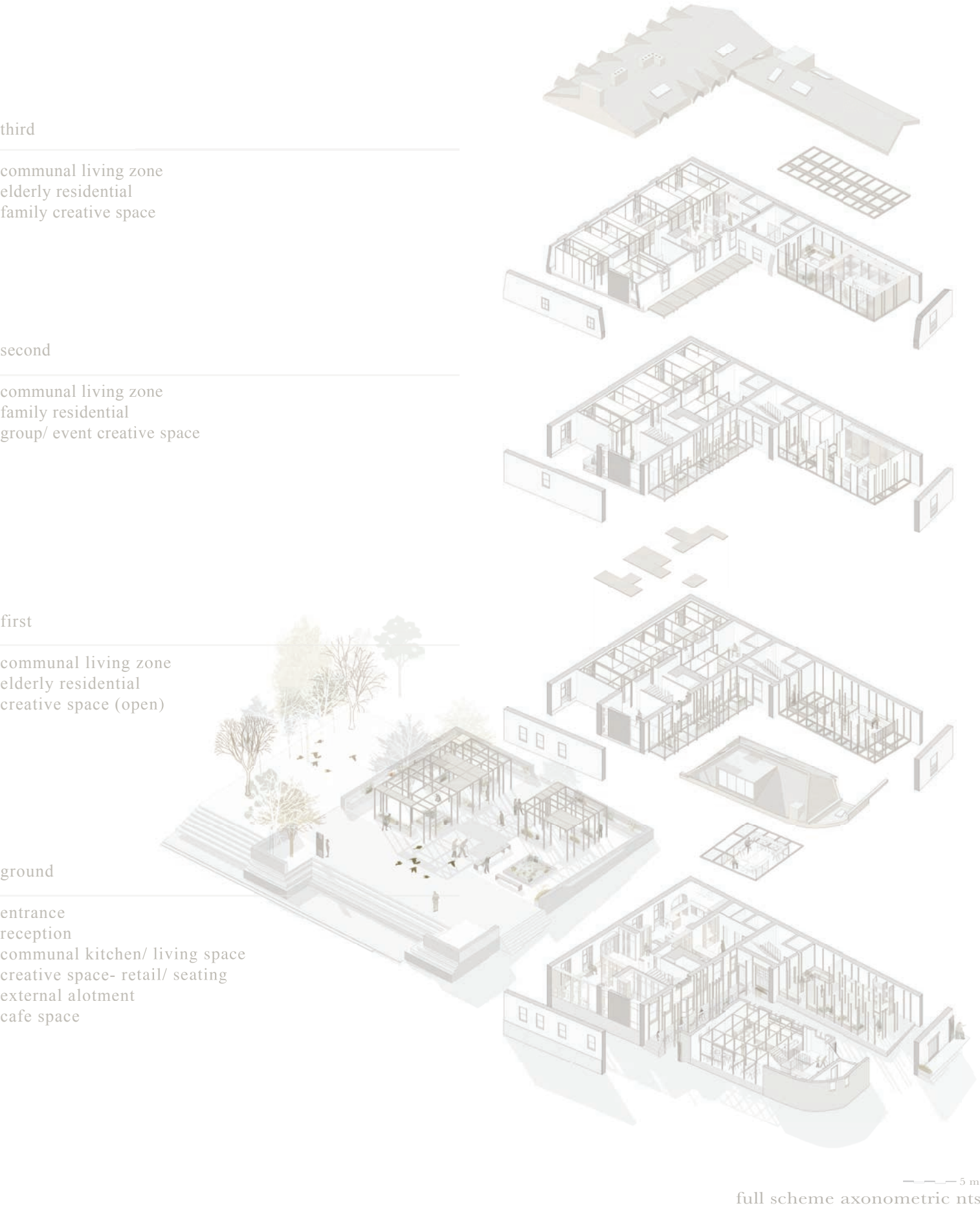
communal living zone
family residential
group/ event creative space

first

communal living zone
elderly residential
creative space (open)

ground

entrance
reception
communal kitchen/ living space
creative space- retail/ seating
external allotment
cafe space



Motif Applied to Surrounding Site

i have specifically chosen to look at the elderly age group, exploring challenges such as a lack of involvement within the surrounding city and community. through integrated public spaces such as a café, workshops and allotment the scheme will aim to tackle the feeling of loneliness and disconnection that the elderly community may face.

by extending the motif of the grid into the surrounding city environment the building is integrated into the lives of society, the elderly are able to create these connections with the wider community through the building. the motif also enables the elderly to create connections in the mind subconsciously.



external grid structure/ walkway

Materiality



15mm birch plywood

100 x 200 mm birch plywood grid structure

cross lap joinery connection for timber grids with a steel plate connecting batton to the floor