

# THE UBUNTU MANOR

—————> 'I am because we are' (Zulu)

## DESCRIPTION

In the heart of Newcastle, a tapestry of lives unfolds, grandparents tending stories like gardens, children chasing laughter through a sunlit courtyard, hands passing down recipes, wisdom, and care. This multi-generational housing project embraces the complexities of the everyday, where the rhythm of shared meals, the hush of evening prayers, and the warmth of gathered voices shape a home. Rooted in anthropology, it honours the beauty in domestic rituals from different cultures, the way we cook, rest, nurture, and belong. Here, past and future intertwine, weaving resilience, tradition, and togetherness into the very walls of Charlotte Square.

## 1:20 AXONOMETRIC OF RESIDENTIAL QUARTER



### ARCH MOTIF

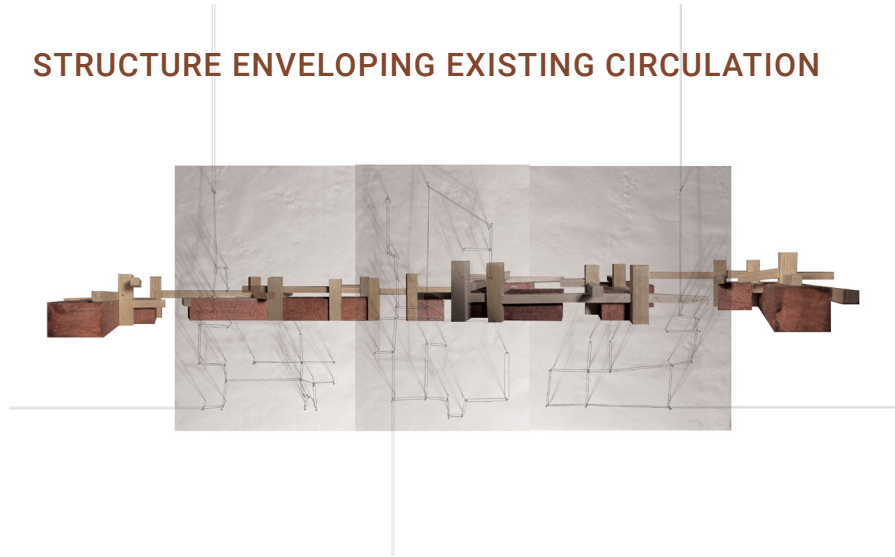
- a design that unites all cultures that the Ubuntu Manor accommodates to.



## HOUSEHOLD COMPOSITION

- No. of Generations: 3 (grandparents, parents, children)
- No. of Residents per Generation: 2-4
- Unit Capacity: 2 bedroom, 1 bathroom (adjoining spaces)
- Term Time: temporary

## STRUCTURE ENVELOPING EXISTING CIRCULATION



PERSPECTIVE OF RESIDENTIAL QUARTER, RETREAT AREA

## UNCONVENTIONAL WALLS | MODELS AND SKETCHES



## DETAILS OF THE RESIDENTIAL QUARTER

- ROOM SIGNS FEATURING COUNTRY NAMES
- WELLBEING SPACE: BUCKET BATH

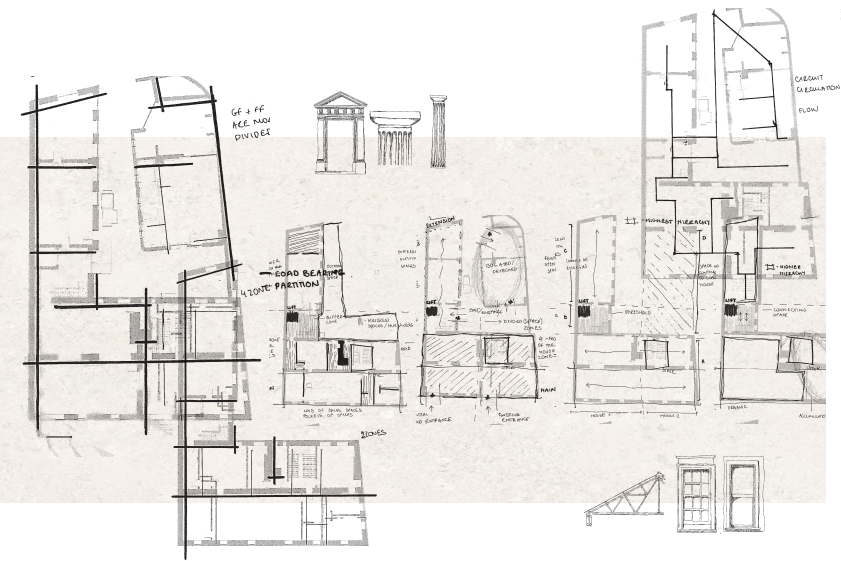


MYCELIUM WALLS MODEL

- can be grown into lightweight, durable wall panels.
- fully biodegradable and made from agricultural waste.



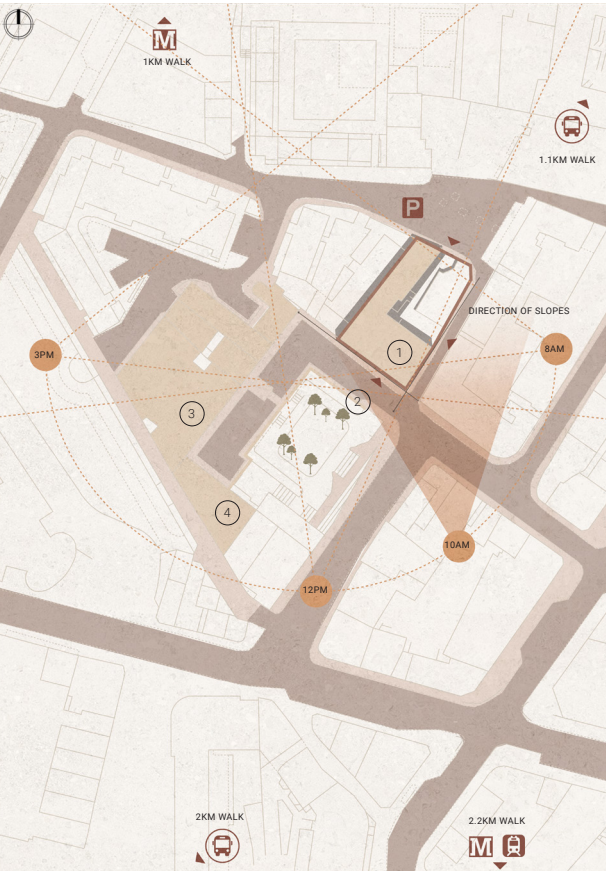
## SITE SKETCHES AND PERSONAL OBSERVATIONS



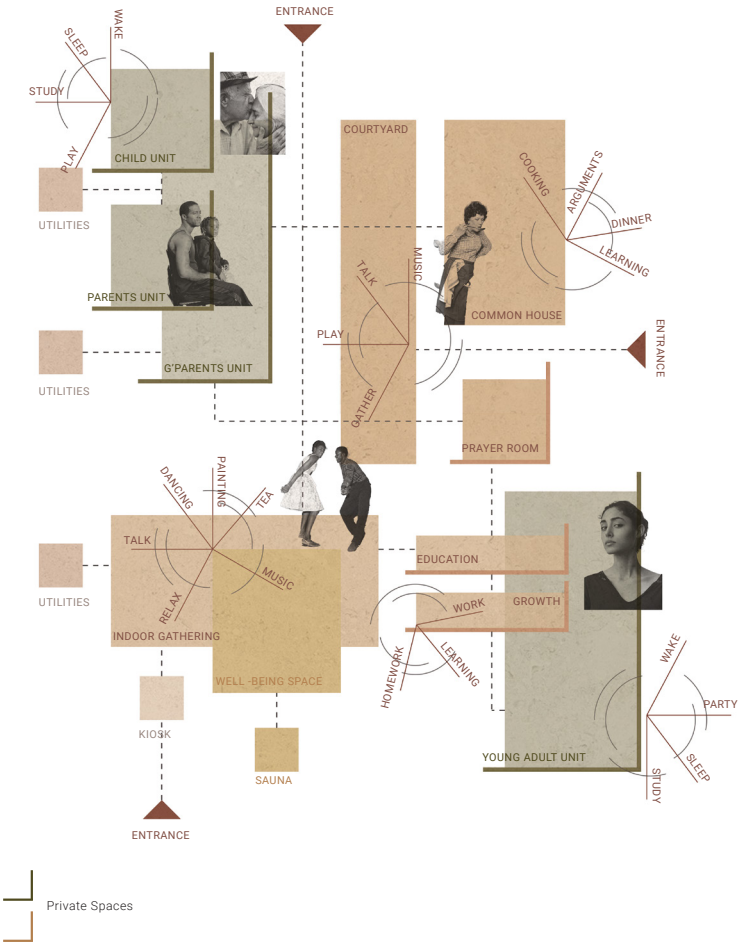
Irregularities, elements as extensions, interstitial spaces



SITE MAP



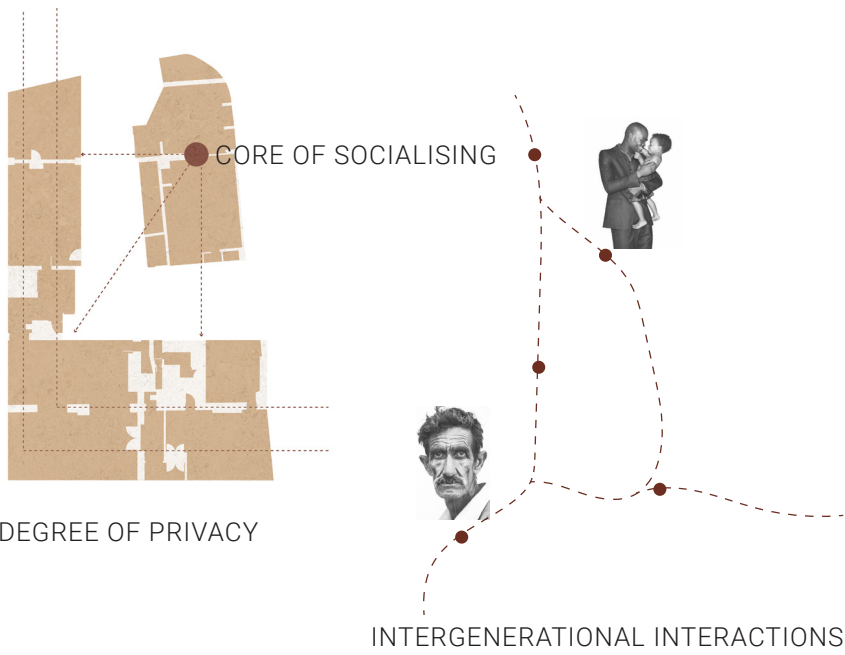
ADJACENCY DIAGRAM



1:50 SECTION B-B



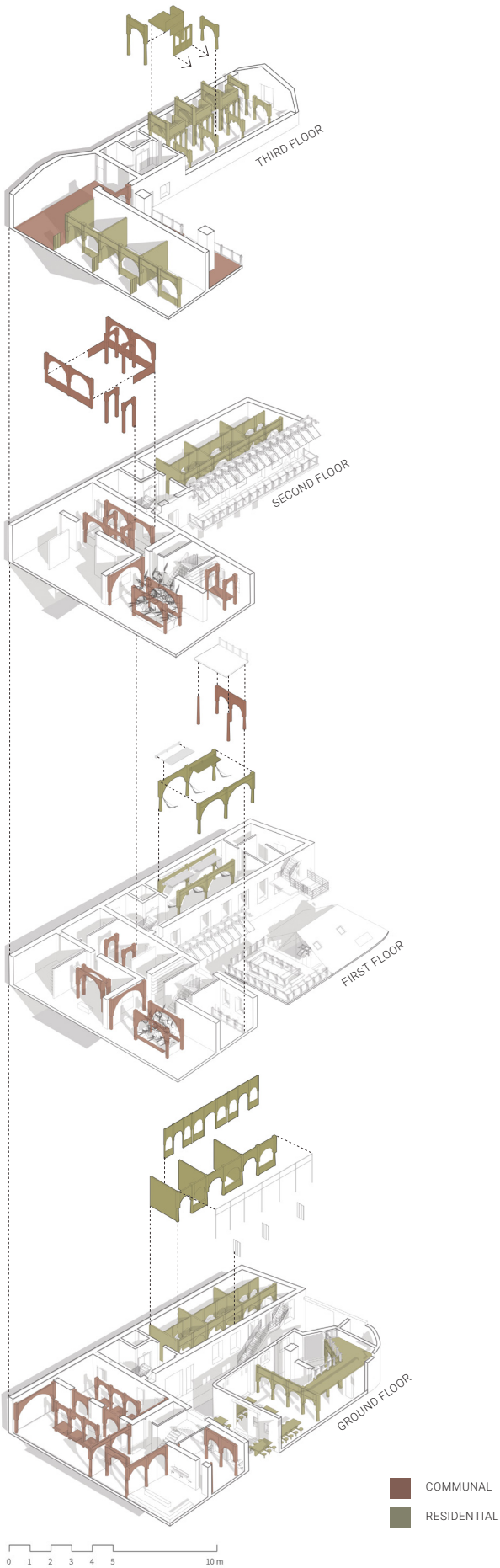
ADAPTIVE STRATEGY



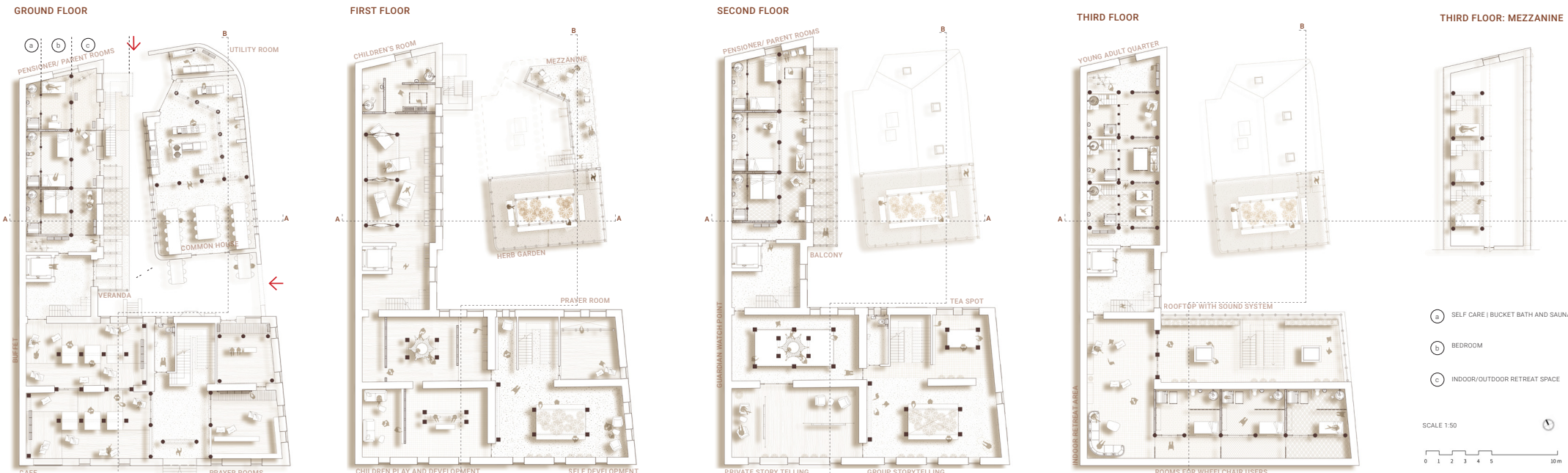
TYPLOGIES OF IMMIGRANT COMMUNITIES

- Home is experienced as a site of security, heritage and ancestral connection, reinforcing identity and resilience.
- Home is not an isolated space but an extension of the self, where relationships, culture and identity are shaped by communal interactions.
- Home becomes a place of duality, balancing nostalgia for communal life with modern aspirations and global influences.

1:200 AXONOMETRIC



1:50 PLANS



BRIEF OVERVIEW

UAH! reimagines affordable living in Newcastle by transforming 1 Charlotte Square into an inclusive residential and community hub. The project addresses the housing needs of displaced individuals and unconventional households while preserving a key heritage asset in the historic Blackfriars area—bridging social purpose with architectural legacy to foster resilience, community, and adaptability.

At its core is the adaptive reuse of the Grade II-listed Georgian building. The design introduces a flexible interior that blends private and shared living with communal care and social spaces.

To support inclusion, well-being, and shared experience, the reimagined layout includes:

- private living units
- shared kitchens and dining areas
- quiet spaces for reflection and counselling
- co-working and community areas
- optional retail or café units

The design takes a narrative-led, human-centred approach, combining sustainable strategies—like demountable fit-outs and material honesty—with the building's historic character.

Addressing urgent housing needs, the project creates a supportive environment grounded in:

- dignity
- adaptability
- social connection

UAH! uses 1 Charlotte Square as a canvas to merge heritage with contemporary needs—offering a model for inclusive, future-focused urban living that honours Newcastle's past and evolving social fabric.

