



Site model exploring decay and ruin

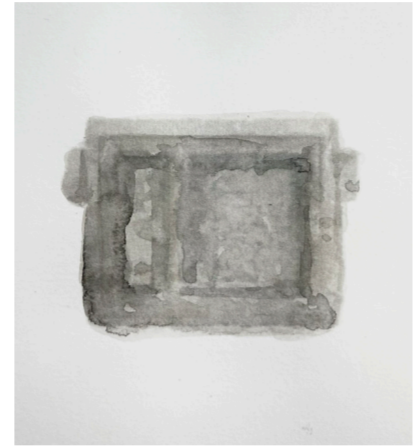
This plaster study explores the hypothetical result of decay and ruin within the building structure over time. By examining factors such as material composition, environmental conditions, and potential sources of deterioration, it offers insights into the possible progression of degradation.

# An Intimate Music Sanctuary

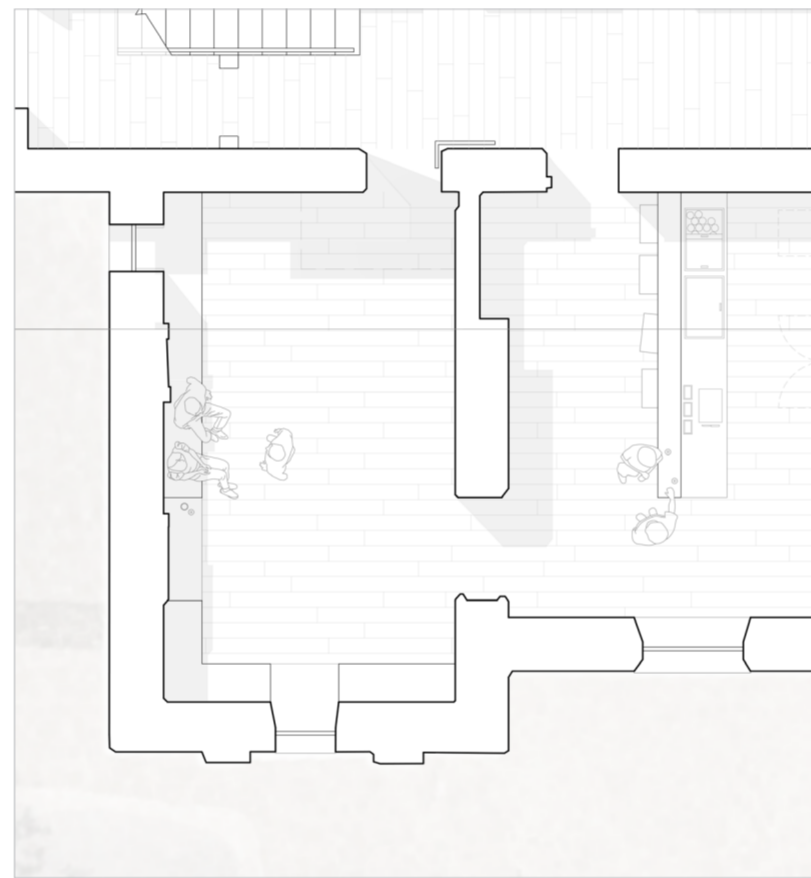
Chloe Hodgson



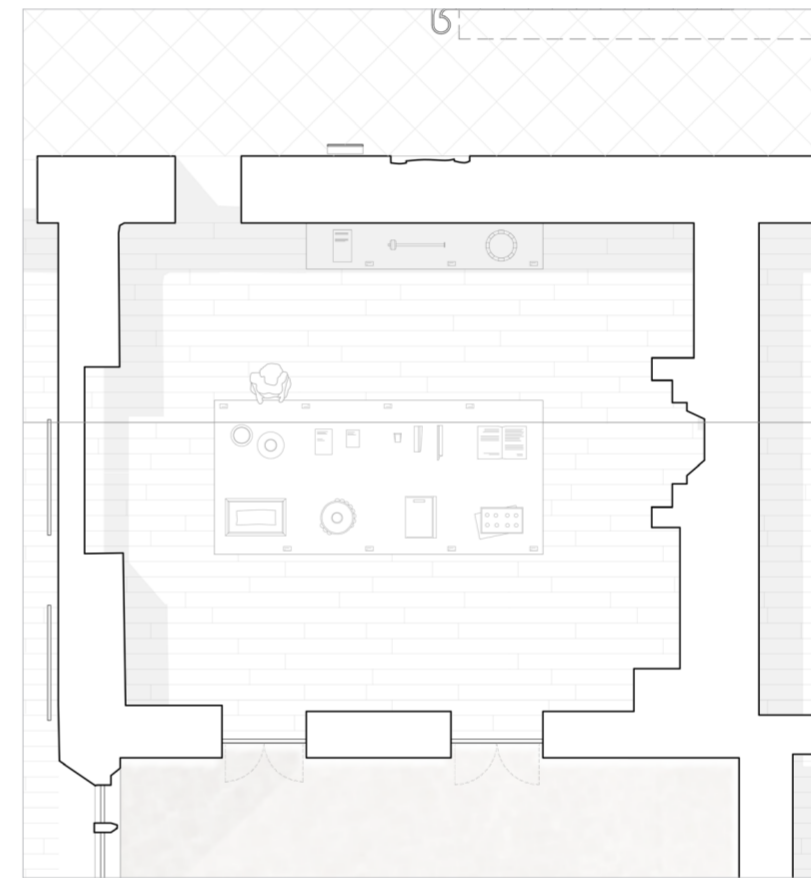
Test model exploring materiality



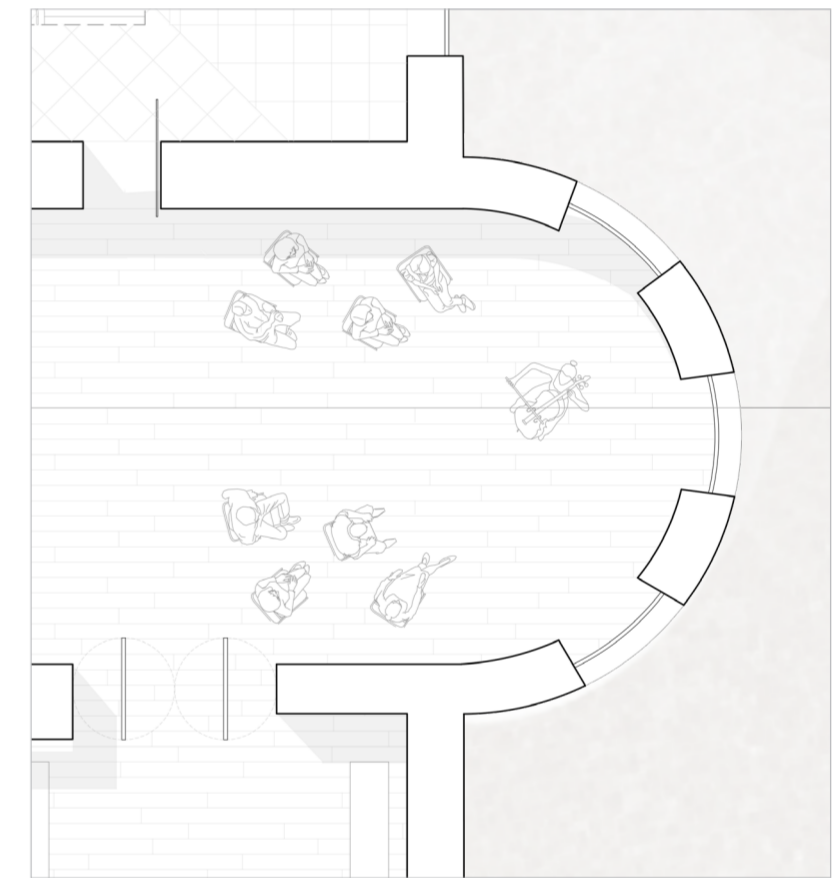
Concept sketches that explore activities during the daytime and evening



Live music and refreshments



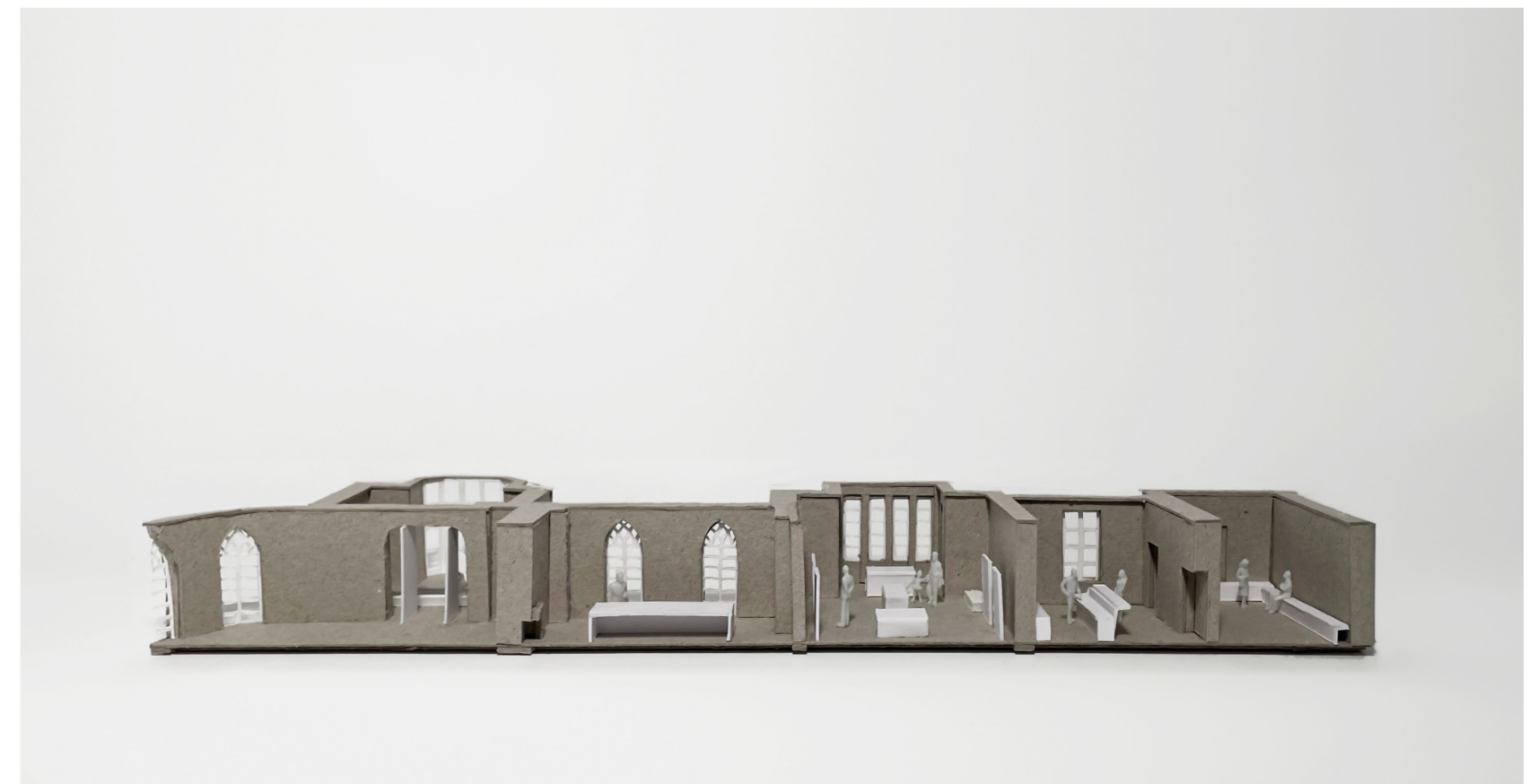
Brinkburn Collections exhibition



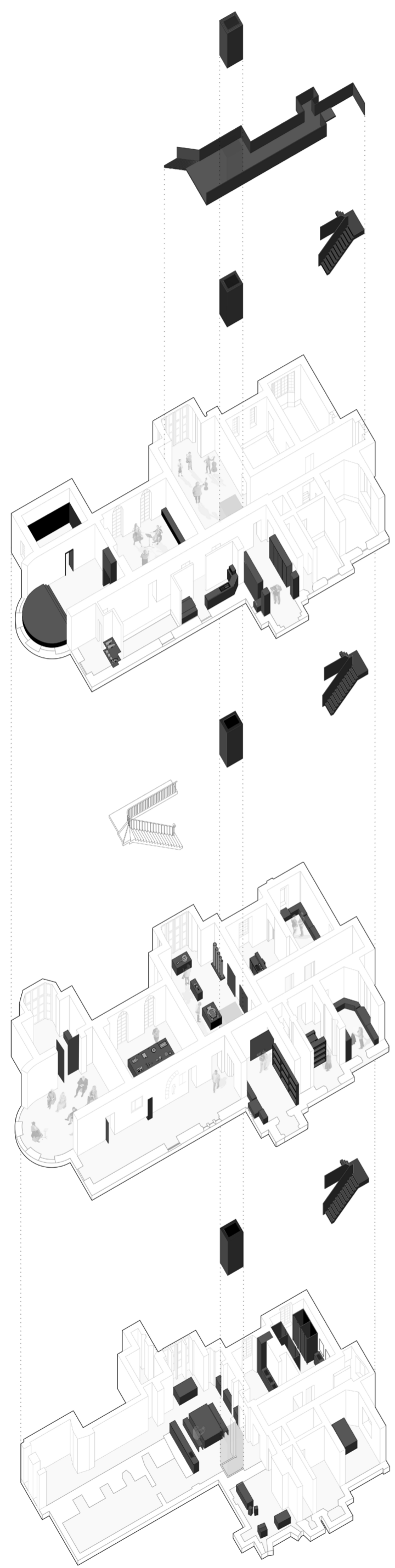
Intimate string performance experience



Creative study showcasing performance space



A Sectional representation of 'An evening at Brinkburn Manor - An intimate Music Sanctuary'

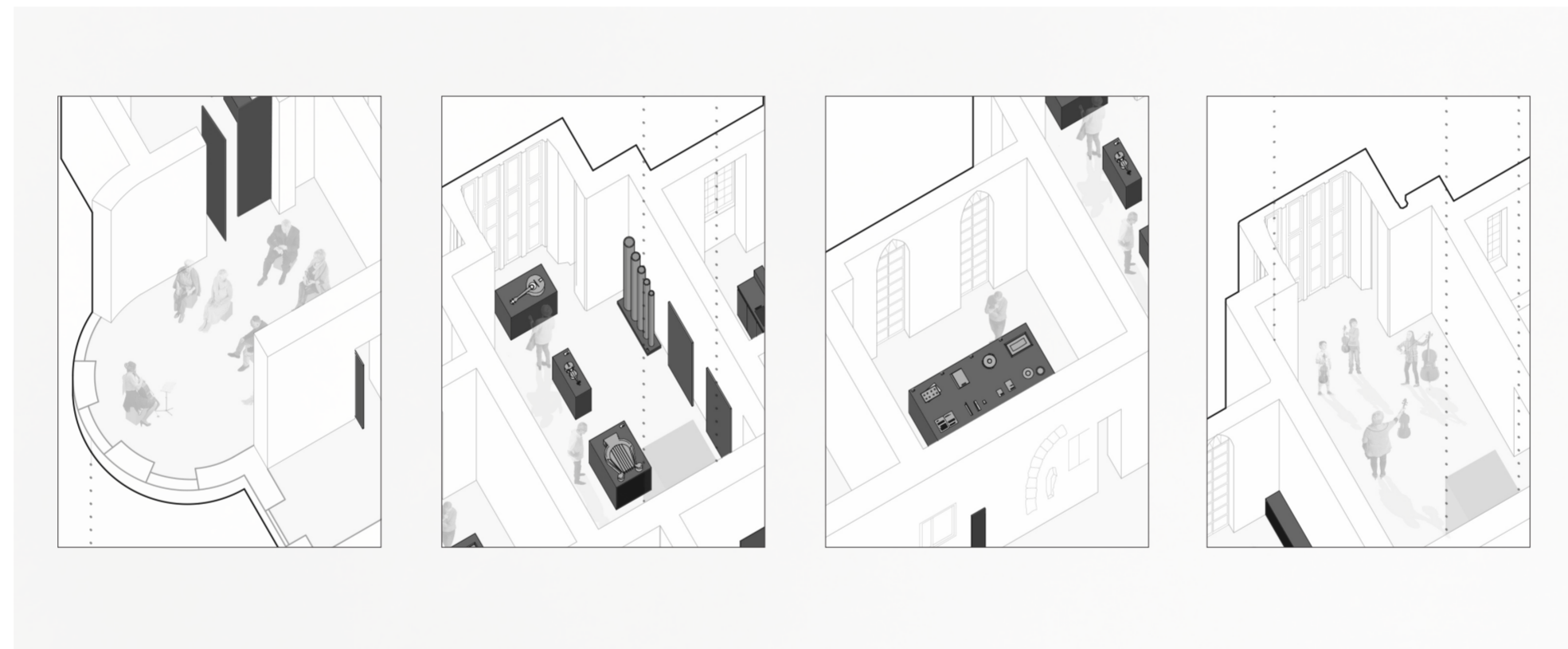


## An Intimate Music Sanctuary

### The project:

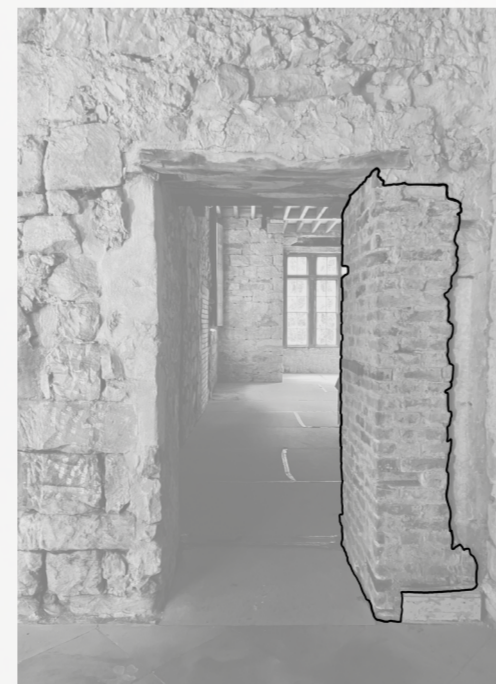
An intimate setting for music lovers within a beautiful surrounding, rich in historic narrative. The beauty in the decay is left to proudly tell a story. The design scheme is solely centred around appreciating the existing, the landscape, a tale of resilience.

Brinkburn welcomes music lovers to enjoy its intimate string performances. The collections shall be showcased, and music professionals can share their knowledge and celebrate the prize that is the Organ. Bringing life to a once cherished event at Brinkburn, the Summer music festivals shall return.



### My approach:

To lightly touch the building, the scheme is centered around experience, collaboration and education.



### The palimpsest tells a story

Various past events and decisions at Brinkburn have left their mark and have become part of the fabric. These judgements tell a story and represent the building's history from abandonment to when little funding there to care for and maintain the structure.



Site: Brinkburn Priory Manor House

Client: English Heritage

Whilst being tucked away within a deep valley, there are many tales surrounding Brinkburn Priory and the resting fate of their bells. They held great significance within the history of Northumberland and the winding river Coquet is said to still carry the ringing of the bells through the waters today.

### Concept:

