



SHORT SECTION (LEFT) AND LONG SECTION (RIGHT)

Occupying the new scheme at two angles with the exposed repaired timber roof structure.

## THE CERAMIC JOURNEY - GIBB CHAMBERS

A CO-WORKING HUB FOR CREATIVES AND THE COMMUNITY TO COLLABORATE AND CONNECT

The direction of this project was inspired by the history of Westgate Road and the discovery of roman pottery, as well as the initial site visit uncovering a 'pill' form phenomenon, helping to distinguish contrast between the neoclassical shell of the exterior against the discovered futuristic interior feature, encouraging the shape to accommodate the scheme to create a sinuous and organic design whilst using the ceramic nature to generate a unique aesthetic through form, colour, texture and pattern. By applying the ceramic process to the vertical journey of Gibb Chambers, the existing staircase symbolises the spiralling of a pottery wheel, where every ceramic process begins - similar to where every journey through the building begins. Each floor illustrates a different stage within the ceramic journey, starting with the lower ground level and gradually getting richer with material.



1:20 AXONOMETRIC DETAILED SECTION (NTS)

This detailed section illustrates the phenomenon of the 'pill' form and how it inhabits the new scheme. The ground floor entrance is accompanied by a retail space for artists and the public to sell and buy ceramic pieces made in-house. Along side a cafe open to the public divided by a terracotta brick partition. The first level floor contains co-working break out points and a kitchen, with a conversation pit to encourage collaboration and communication between artisans.



FIRING STAGE  
FIRED



GLAZING STAGE  
GLAZED

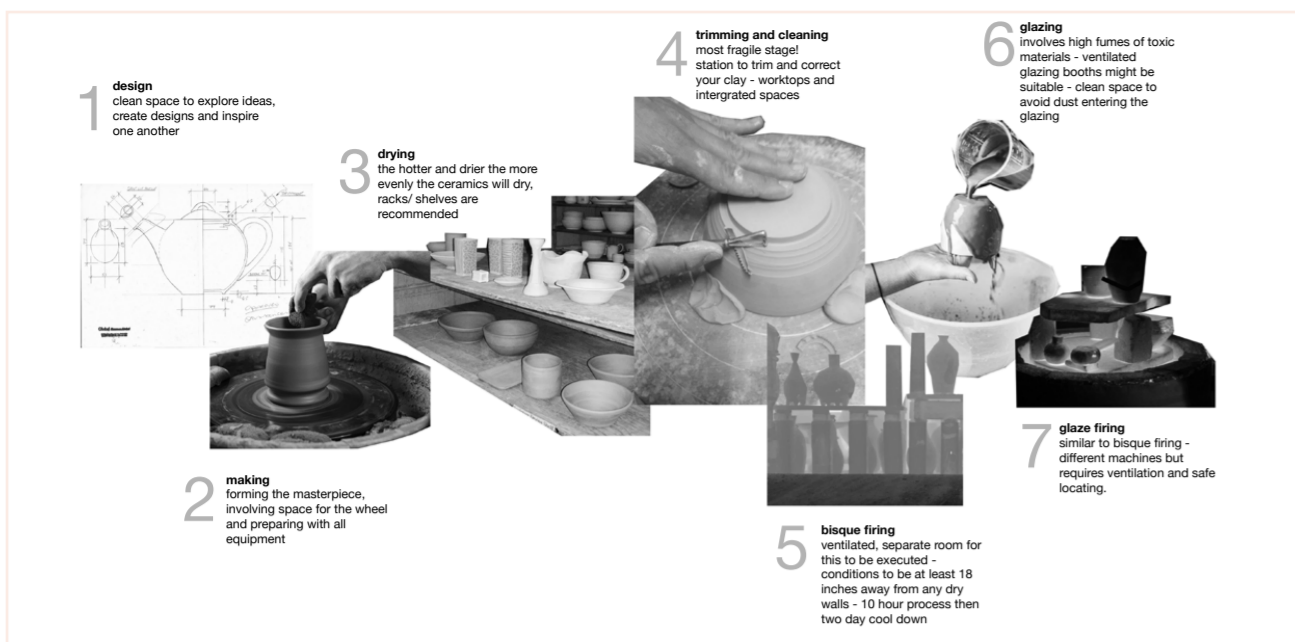


DESIGN STAGE  
RAW



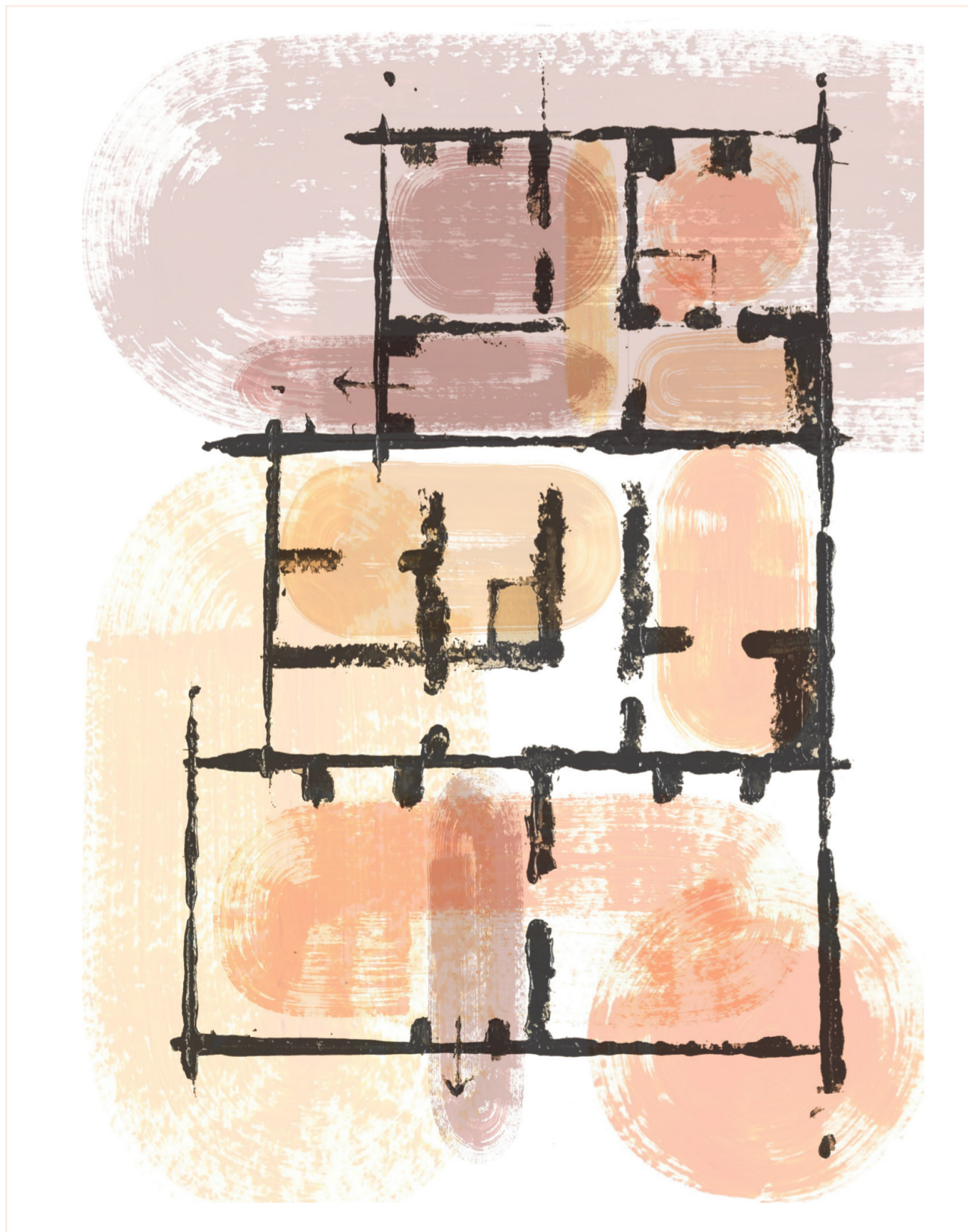
MAKING STAGE  
MATTE





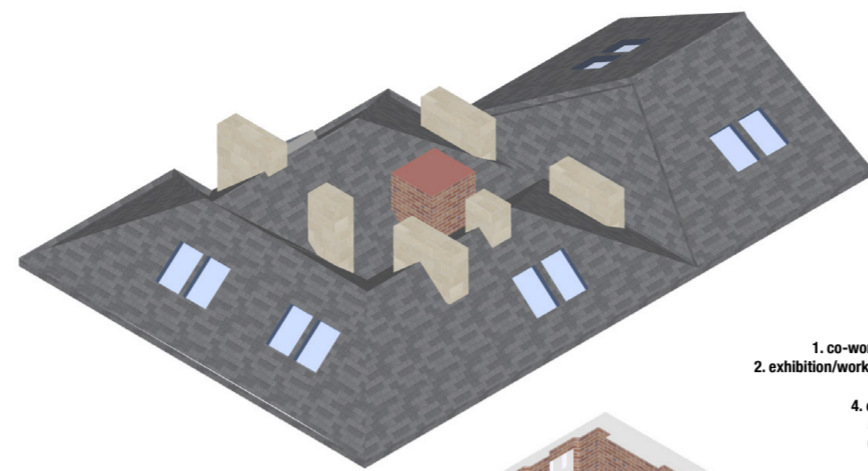
### FUNCTIONAL ANALYSIS OF THE CERAMIC PROCESS

This collage was key for identifying the different stages within the different ceramic process and helped me distinguish the range of spaces required. This then led to applying the ceramic process to the concept of my scheme - the ceramic journey. Using materials to identify which floor is which stage in the process.



### COLLAGE OF THE 'PILL' FORM PHENOMENON

Exploring how the shape fits within the existing structural walls of Gibb Chambers and how it inhabits the connecting spaces.



1. co-working zone
2. exhibition/workshop zone
3. toilets
4. circulation
5. studio 1
6. studio 2



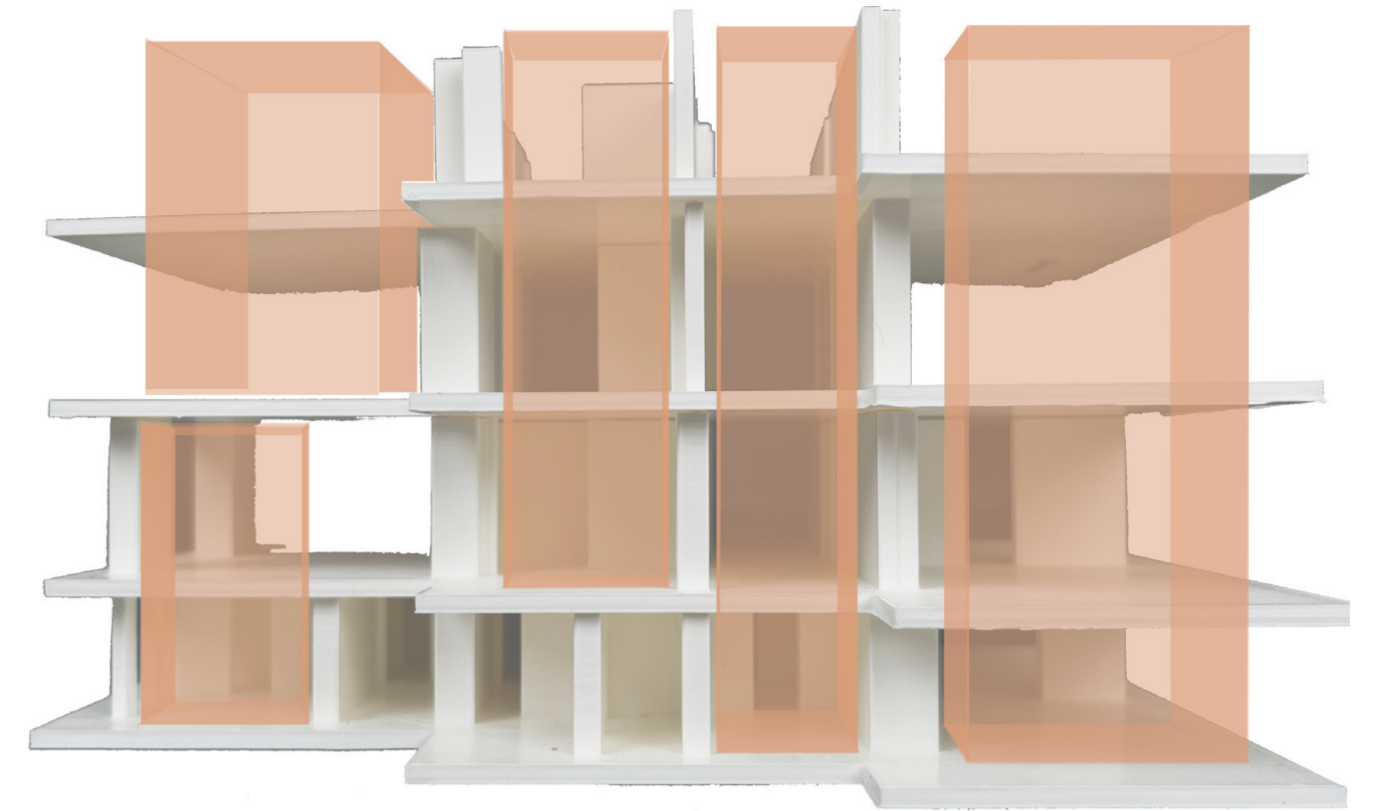
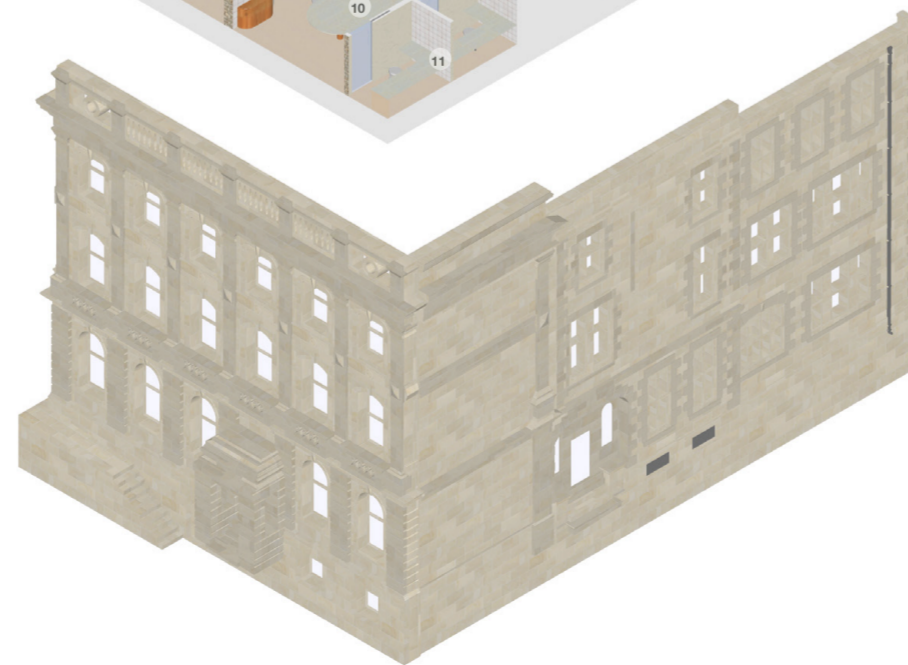
1. private pods
2. work desks
3. it space
4. meeting room
5. circulation
6. co-working social hub
7. conversation pit
8. accessible break out space
9. kitchen



1. pottery painting room
2. pottery making room
3. accessible toilet
4. toilets
5. circulation
6. retail zone
7. cafe
8. mezzanine storage
9. secondary entrance
10. primary entrance

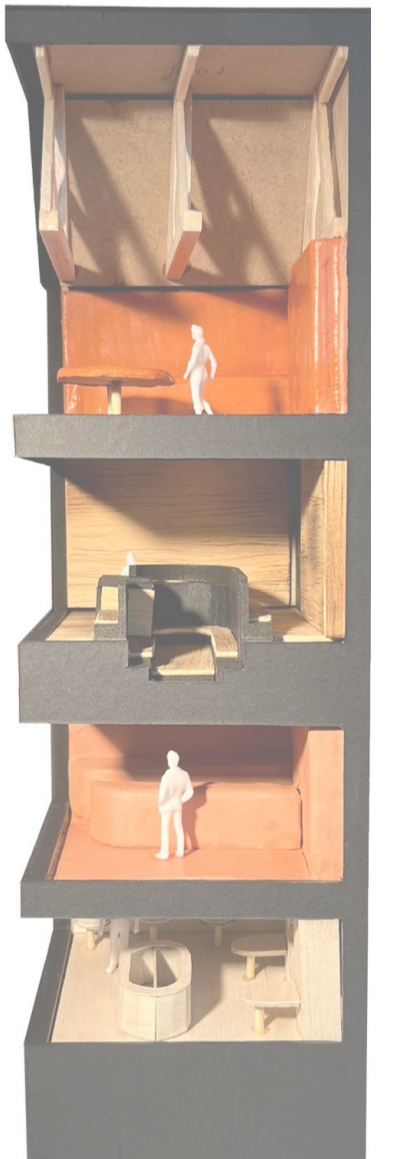


1. private potter studio 1
2. kiln room
3. drying room
4. private potter studio 2
5. shelving
6. toilets
7. circulation
8. shelving
9. wheel room
10. designing room
11. glazing booths



### 3D PRINTED MODEL EXPLORING VERTICAL OPPORTUNITIES

Investigation into the long section of the existing Gibb Chambers of potential double/triple high spaces.



### CREATIVE STUDY MODEL OF MATERIAL DECISIONS

Investigation into the long section of the existing Gibb Chambers of potential double/triple high spaces.