



1 the garden: landscape intervention

rereading brinkburn

heritage exhibition and visitor centre

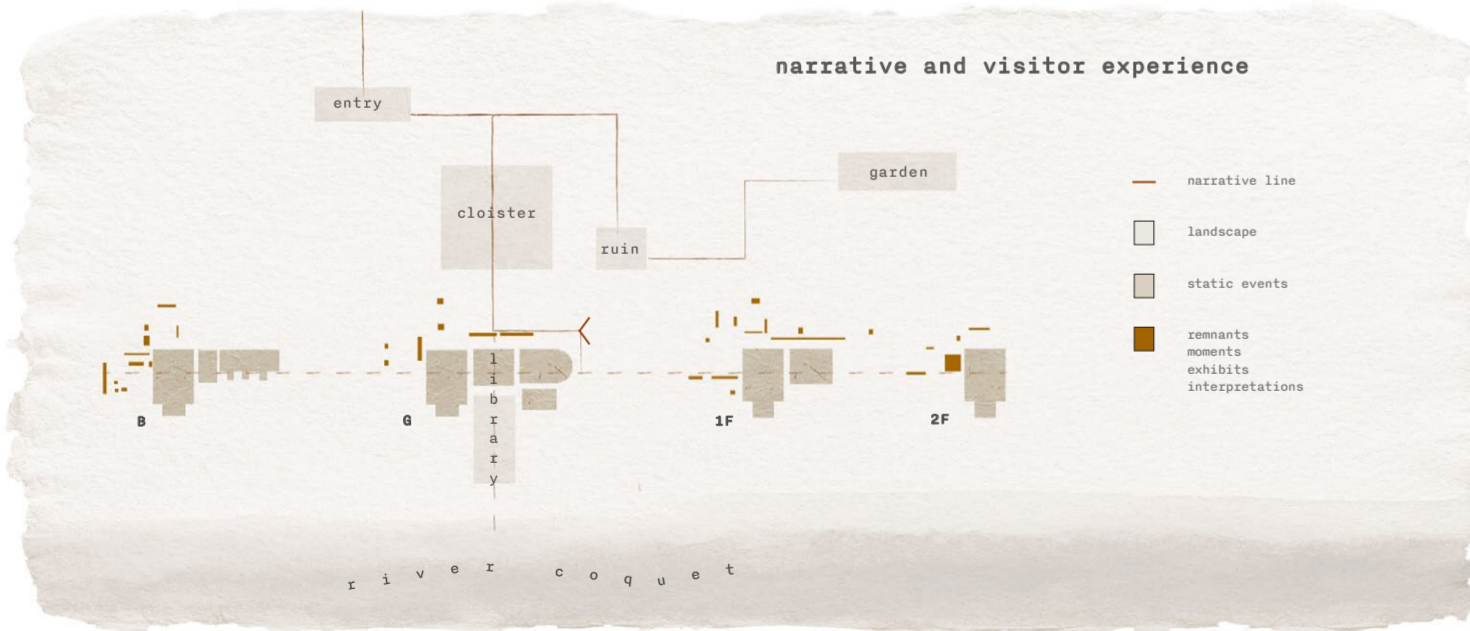
Placing the visitor experience at the heart of this proposal, the ambition of the proposal is to tell stories of the past through **fascinating exhibitions and respectful interventions** that align with the narrative of the site and heritage values. **Rereading Brinkburn** is an immersive and imaginative experience that begins in the landscape, continues within the interiors containing fragments of moments, that then flows back and culminates in the landscape. With a site-specific approach, thresholds, frames, and layers create continuity and transparency to enable an honest dialogue between the old and new, the past and present. Ultimately, the proposal aims to support the ambition of English Heritage that extends beyond an increase in visitor, and envisions a curated influx of individuals drawn by the appeal of discovery...and our enduring fascination to history and how they are relevant today.

- Site
- English Heritage guardianship and boundary line
- River Coquet: Sites of Special Scientific Interest (SSSI)
- Ancient Woodland
- Priority Habitat Inventory - Deciduous Woodland
- Slopes
- Listed buildings
- Veteran trees (yew, sycamore, oak, lime)

proposed map



existing map



2 info: the bell pool



3 direction signage



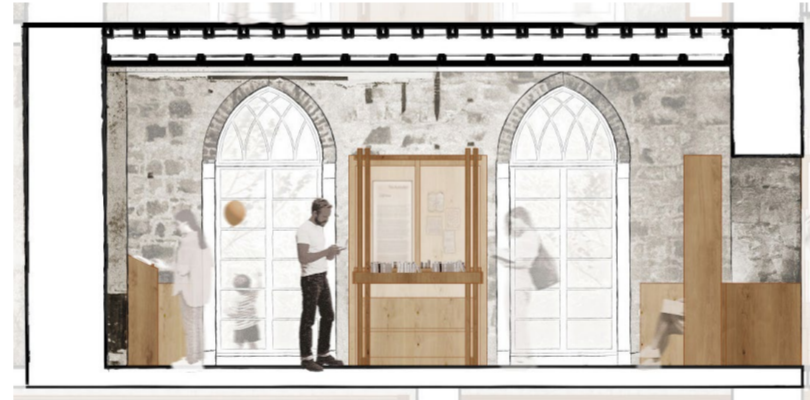
4 cloister intervention: muddy boots + water station



5 info: the mill



P1 the library and bookshop



6 the library: outdoor seating



existing library unfolded

The proposed library and bookshop acts as the *spine* of the ground floor, it reconnects the existing drawing room to the proposed story room, while providing ease of access to the cafe kiosk, cloister walk and the outdoor seating area with the *view of the River Coquet*.

In it's essence, the library and bookshop hopes to revive the forgotten tradition of *storytelling and poetry reading* at Brinkburn Priory, while supporting the narrative of the site and proposed exhibitions.



P2 exhibition: manors revisited



exhibition thresholds



manors revisited's double height exhibition wall

Manors Revisited is an exhibition that fosters meaningful collaboration of various sectors from heritage and conservation to encouraging local and national creatives to put together interpretations and visual curation of centuries of private lives on English Manors.



P3 exhibition: rereading



crafts room and rereading exhibition chapter II



narrative collage: monastic life and scriptorium

Rereading is an exhibition that celebrates selected writings, musings, and diaries – an ode to monastic life and the *scriptorium*, and their contribution to knowledge through the act of rereading and rewriting. Situated in the historical cellar, the participatory part of the exhibition encourage visitors and travelers to contemplate a day in their life, perhaps their experience at Brinkburn, and write an entry which others can *discover, reread and rewrite* their own piece - an evergrowing *book of shared stories and experience*.

The *story room and crafts room* will provide meaningful spaces for both local community and visitors as gathering and workshop spaces, supervised by a visiting artist. The workshop activities will aim to promote awareness, appreciation and protection of our natural environment through arts and craft such as *papermaking, bookbinding, printmaking, ink making*, etc. The programme will included *guided trail walking and foraging materials* for the activities - an experience that hopes to provide participants space to contemplate our contemporary lifestyle and our connection with our environment today through *the art of discovering the past exas' relationship with place and nature*.

tactics, approach and materiality

In the pursuit of understanding a heritage site with a **rich architectural palimpsest**, it's easy to immerse in the tangible aspects: its environmental nuances, historical significance, and legal considerations...yet, beneath these layers lies the realm of sensory, emotional experiences.

Hence, as a starting point for exploration, the proposal examines the use of *Spolia* as a tactic of using a collage-like approach to interpret spaces. Guided by heritage documentations and **phenomenological study**, the articulation of this informed approach aims to understand the spirit and essence of the site, unlocking its true potential for a meaningful visitor experience and **honest interventions** that respect the authentic image and palimpsest of the historic building without imposing on it.



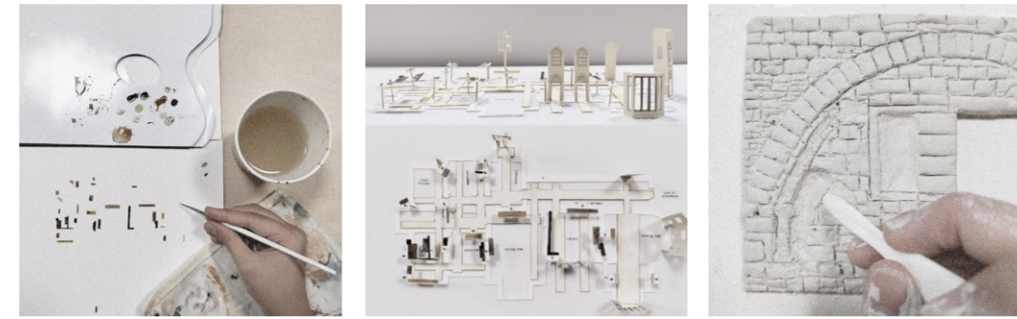
palimpsest study: remnants of a **lavatorium** recess within the manor house (clay and plaster)



phenomenological collage: site visit (mixed-media)



handmade paper process: informing exhibition curation and visitor programme activities (craft room)



site paper collage: remnants, fragments, lost/forgotten objects



process' delightful surprise: details found on discarded paper

The monastic history of the site, specifically the **scriptorium**, as well as the fascinating anecdotal findings of the manor's **library** prompted the use of **paper** to explore the adaptive potentials of the site. The characteristics of paper allowed the existing spaces to be folded, unfolded, layered and framed, informing potential thresholds for narrative and visitor journey. Ultimately, the combination of this process, the historical narrative and phenomenological study informed the **reinterpretation of the manor's entrance corridor**: the space where the two distinct historical narratives of the site merged. A series of 'in-between' **wall interventions** acts as collage **bookmarks**, exhibiting important historical information and curated artefacts and salvaged materials of the site.



visual analogy: unfolding the interiors; unfolding a book

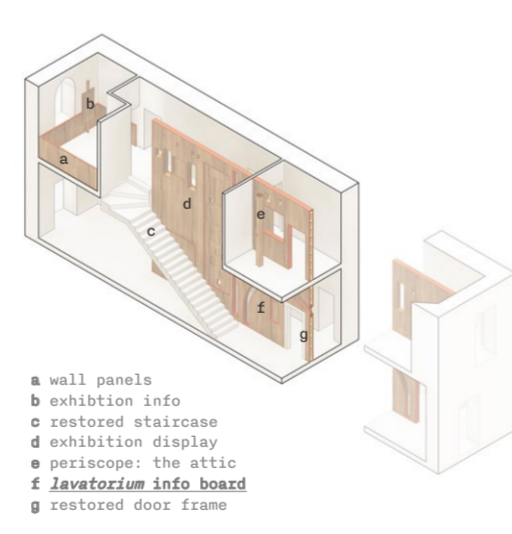
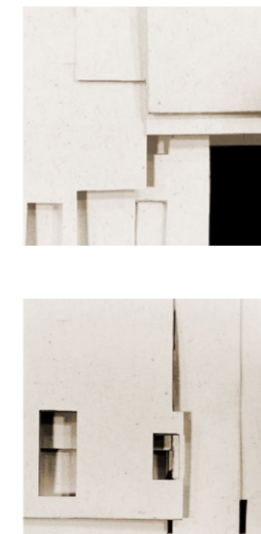


thresholds: folding, unfolding, layering



circulation: movement and continuity

P4 the gallery: entrance corridor intervention

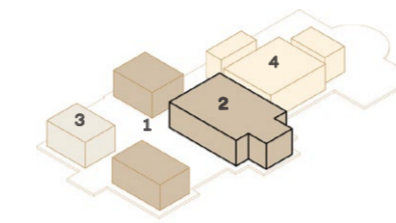


a wall panels
b exhibition info
c restored staircase
d exhibition display
e periscope: the attic
f lavatorium info board
g restored door frame



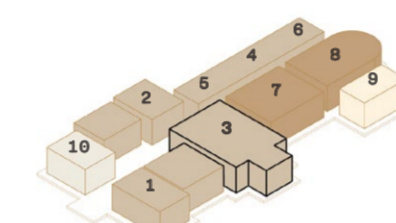
proposed programme

- PUBLIC
- EXHIBITION
- PRIVATE
- LIFT



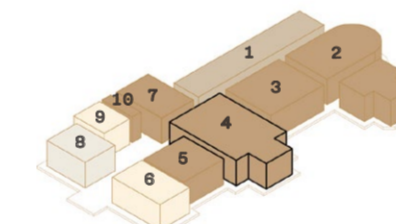
second floor exhibition: manors revisited

- 1 viewing tower
- 2 **memory room**
- 3 the attic
- 4 lift



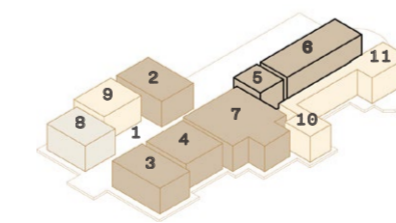
first floor exhibition: manors revisited

- 1 viewpoint: river coquet
- 2 viewpoint: priory
- 3 **memory room**
- 4 the gallery
- 5 viewpoint: the attic
- 6 viewpoint: landscape
- 7 archive
- 8 visiting historian + info poi
- 9 storage
- 10 lift



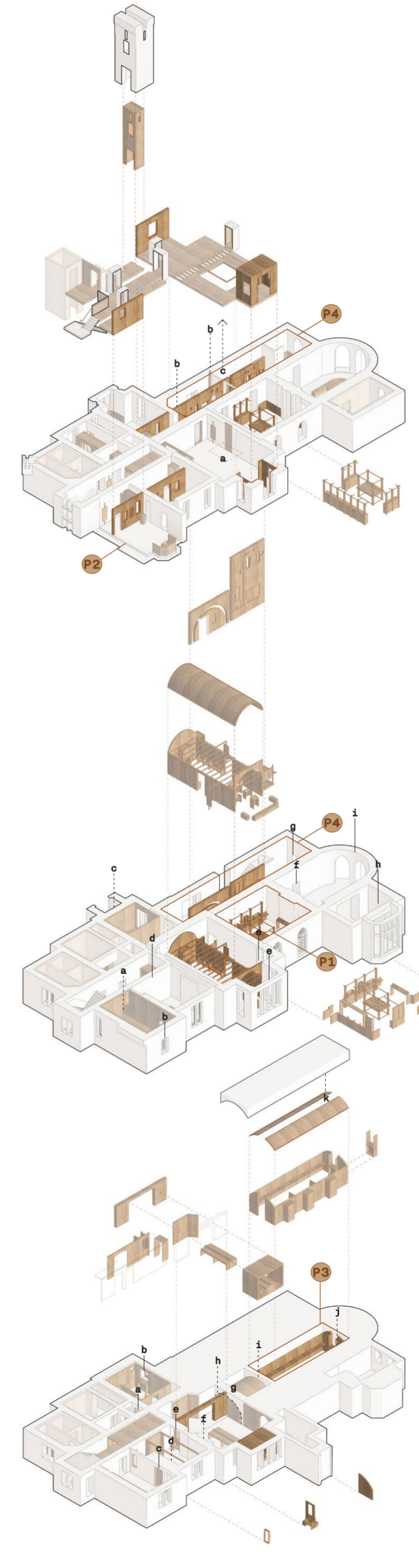
ground floor exhibition: stozy room and library

- 1 interpretation: cloister walk
- 2 events + demonstration room
- 3 library + bookshop
- 4 **stozy room**
- 5 crafts room
- 6 visiting artist + staff room
- 7 kiosk cafe
- 8 lift
- 9 services + storage
- 10 toilet



basement exhibition: rereading

- 1 intro
- 2 prologue
- 3 chapter I
- 4 chapter II
- 5 interpretation: scriptorium
- 6 **rereading**
- 7 epilogue
- 8 lift
- 9 services + storage
- 10-11 private



historical and existing details and materiality

