

TALES ON TAP

MONASTIC HISTORY OF BRINKBURN MANOR

Brief

This project explores Brinkburn Manor, one of 84 ecclesiastical sites, and unfolds as a celebration of the site, cultural preservation, and an immersive journey into history, architecture, and the natural serenity that defines this English landmark.

Design an intervention to alter and reimagine Brinkburn Manor and its surroundings as a visitor experience to allow the English heritage to realize its ambition and share this tranquil site. Consider the rich historical narrative.

Response

This project's aim is to emphasize sustainability and energy efficiency while honoring Brinkburn's rich history. Inspired by its use by Augustinian monks, a brewery will be designed where visitors can experience, taste, and rest. The brewery will feature a fully functioning tower that uses minimal energy, with stages strategically placed to allow gravity to facilitate production with minimal electricity.

The primary goal is to create a captivating space at Brinkburn, inviting visitors to immerse themselves in Northumberland's history. Visitors will learn about and experience the monks' way of life, including the art of brewing ales and stouts. This space will serve as both an educational hub and a sanctuary for travelers, offering rest and guidance. The tower brewing system, designed to operate without electricity, ensures an environmentally sustainable approach to ale production, showcasing historical brewing techniques.



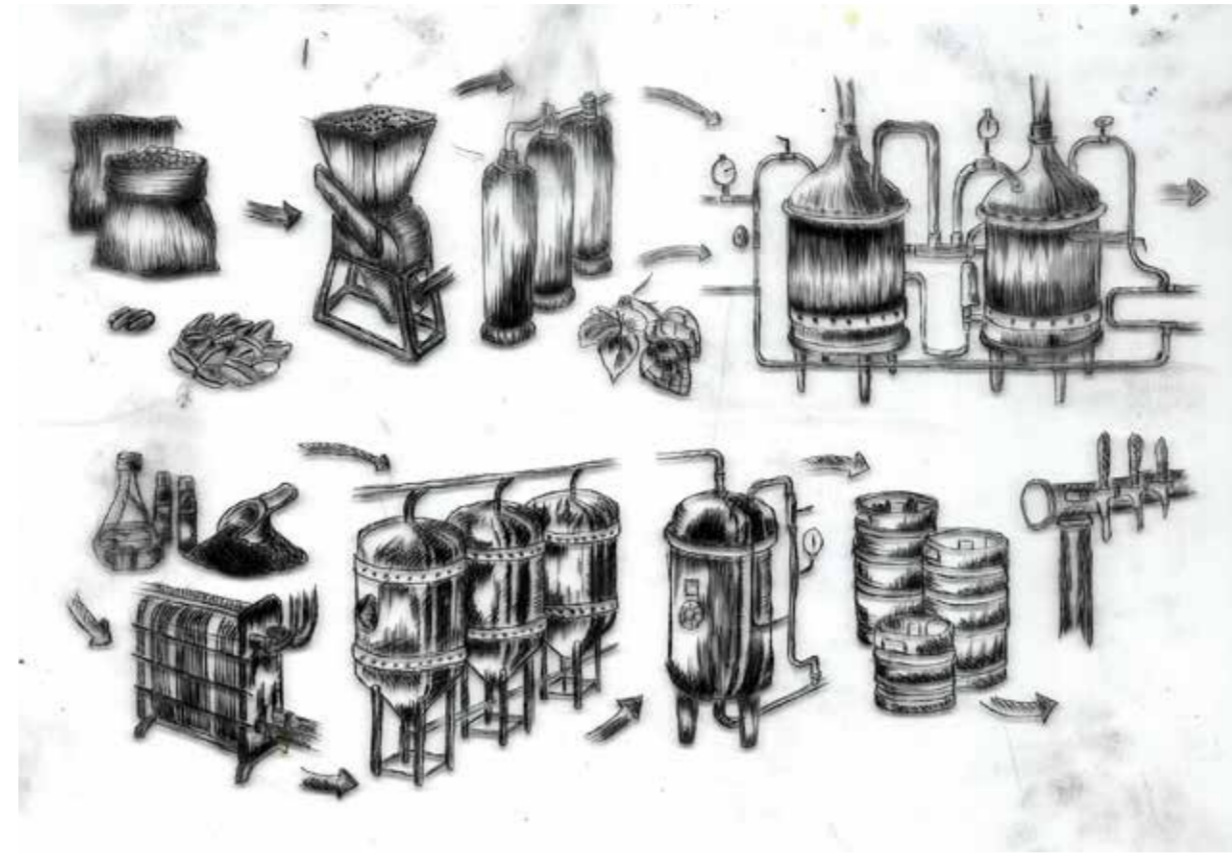
TOWER BREWERY IN BRINKBURN MANOR



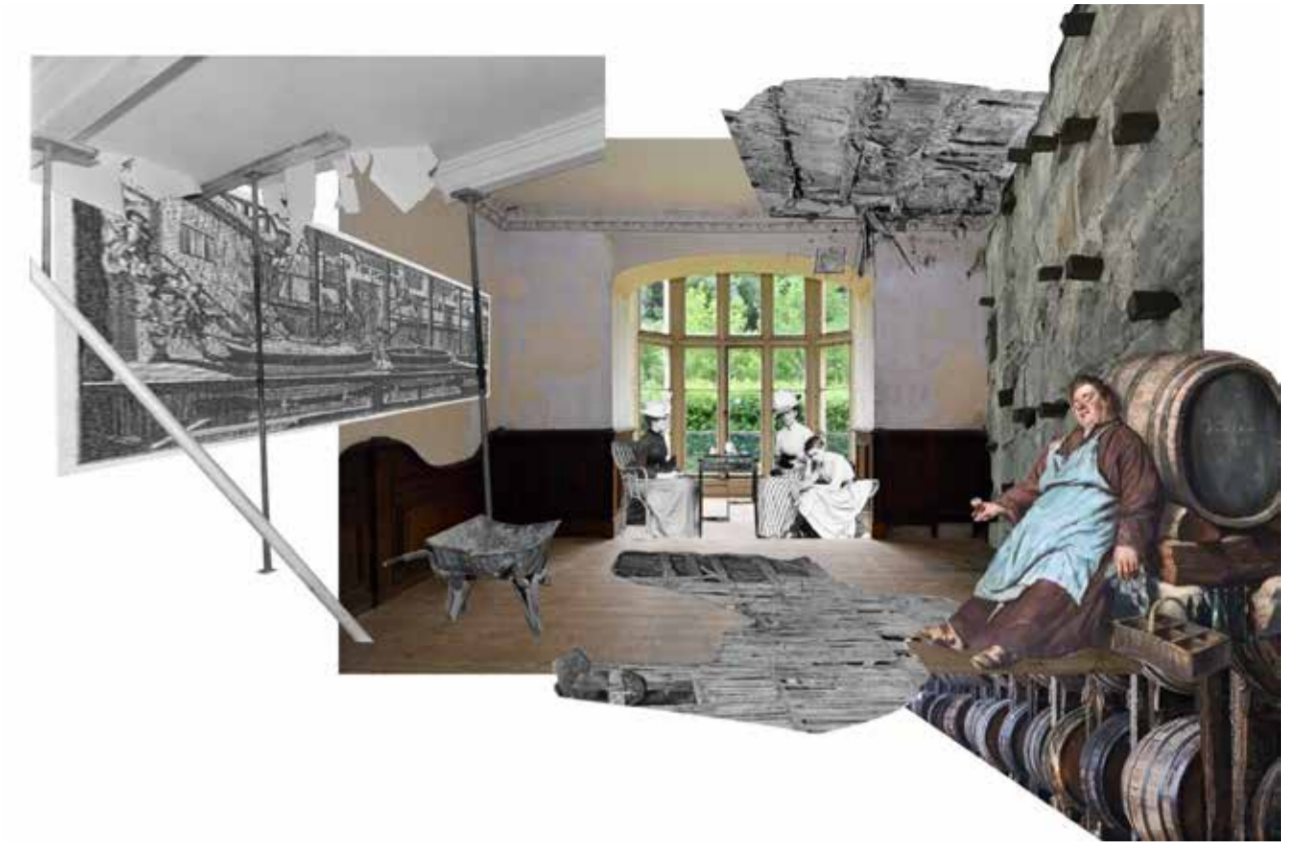
CONCEPT



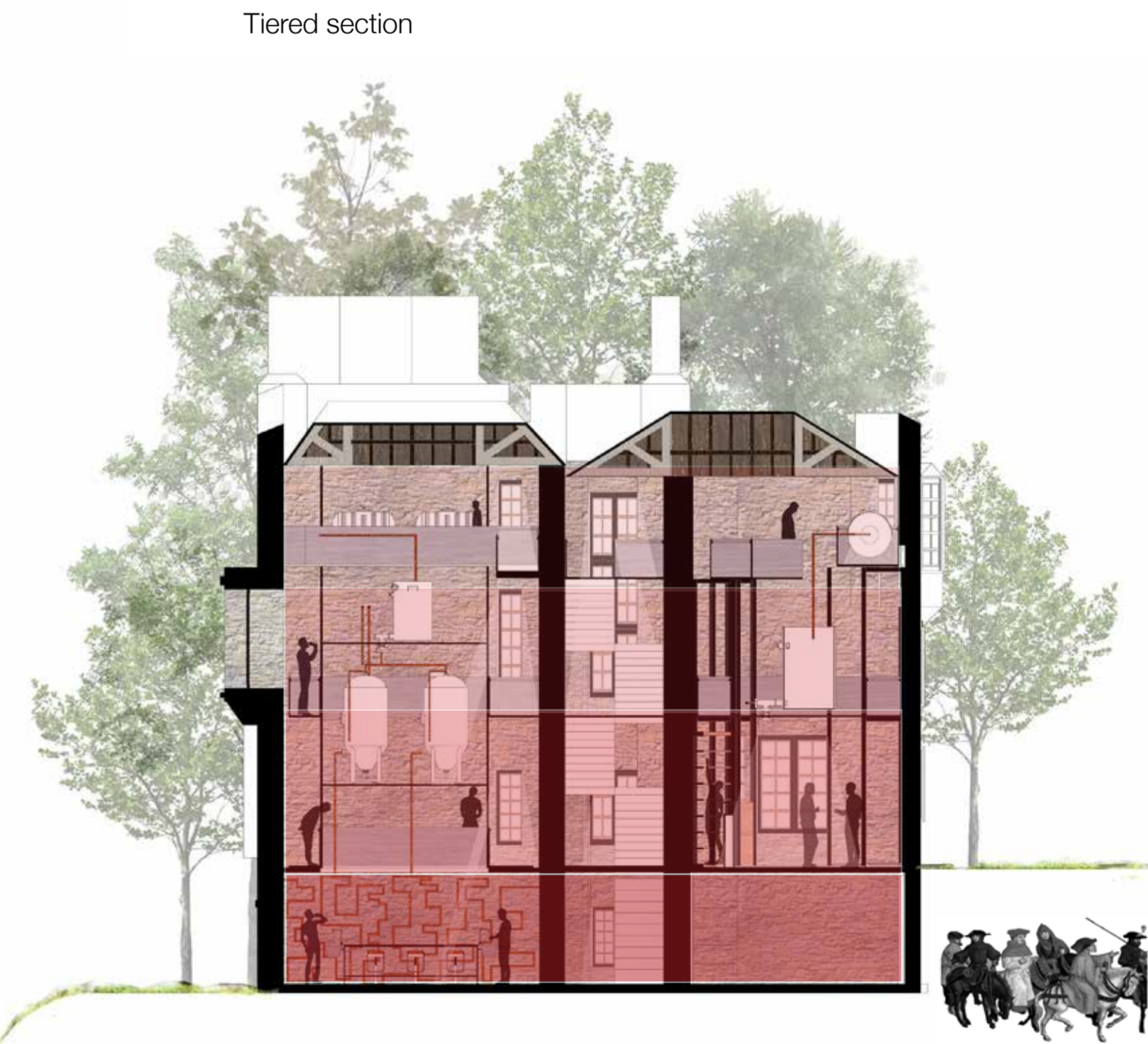
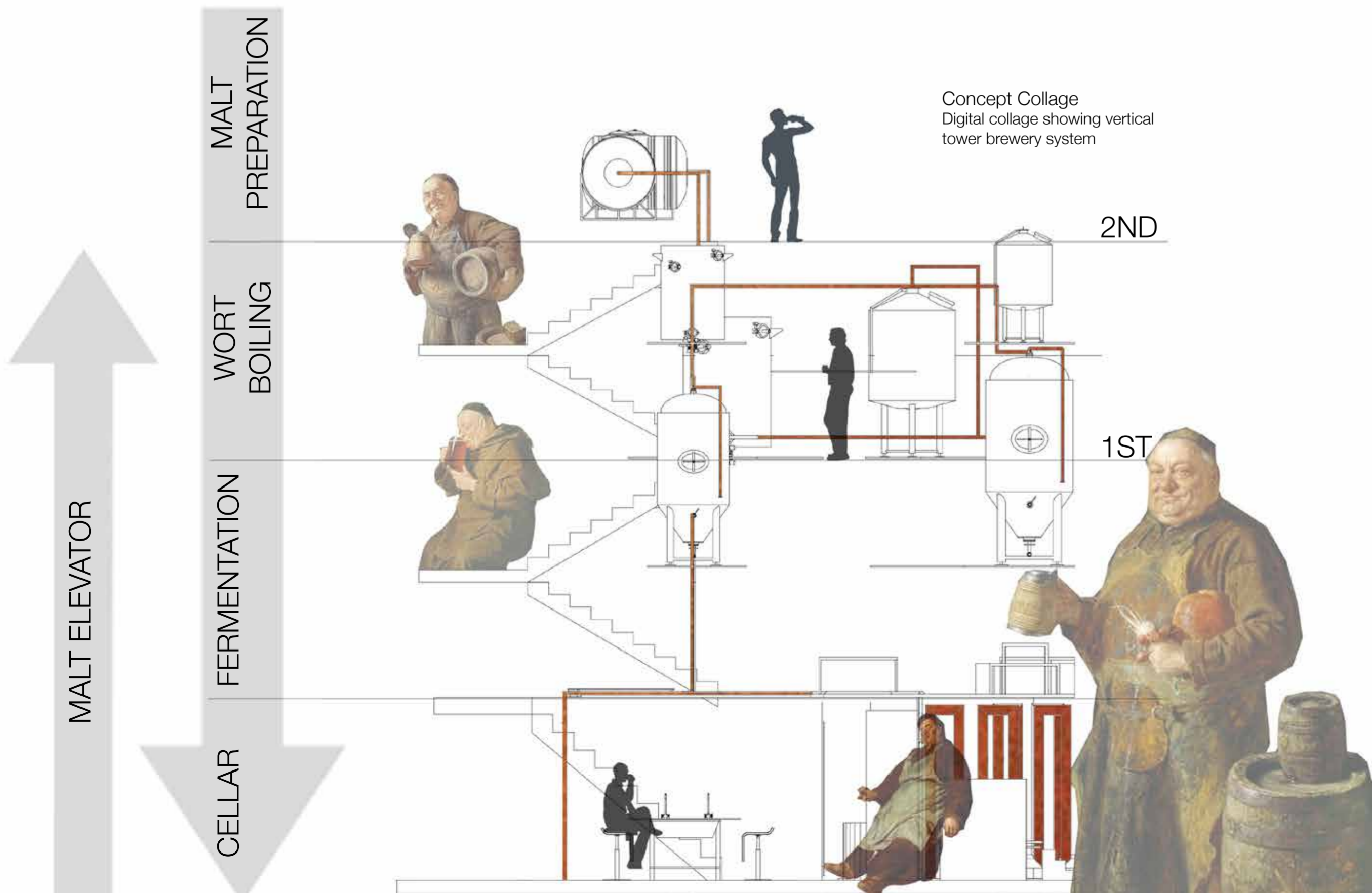
Traditional ale and stout production followed out by Augustinian Monks (cyanotype collage)



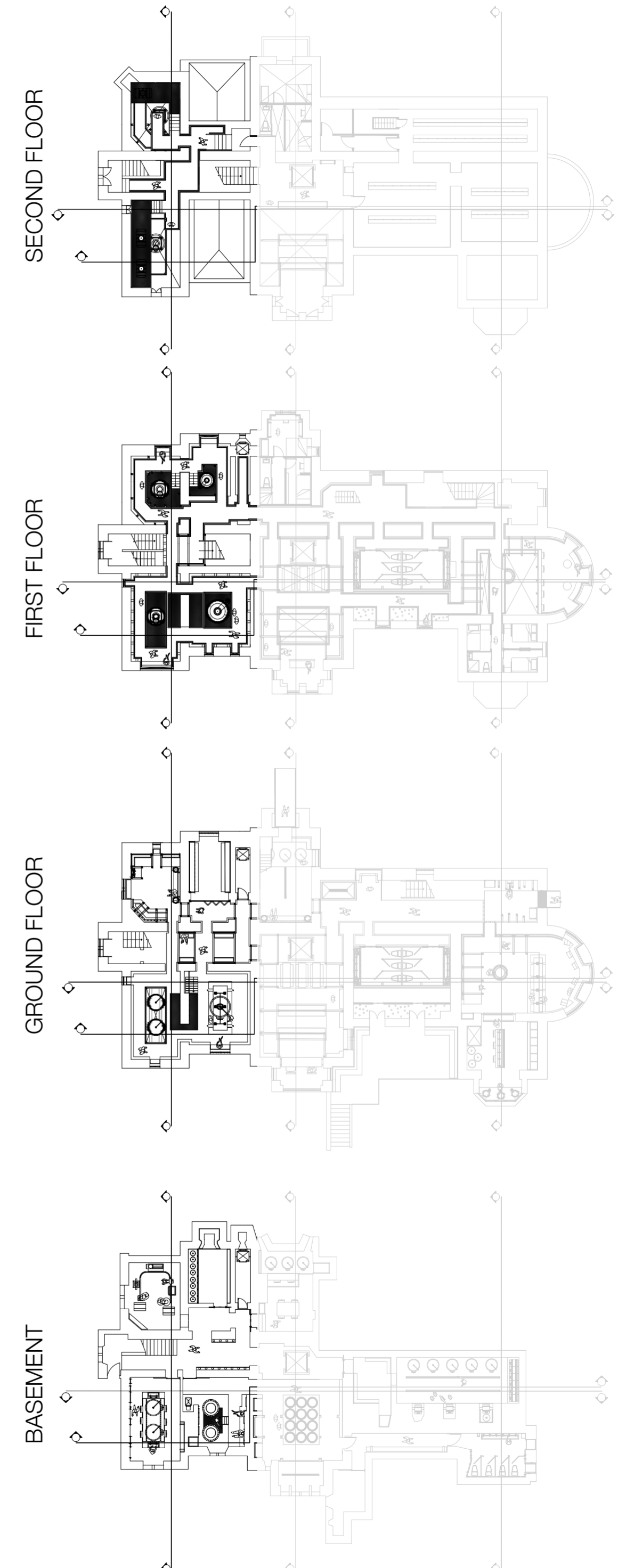
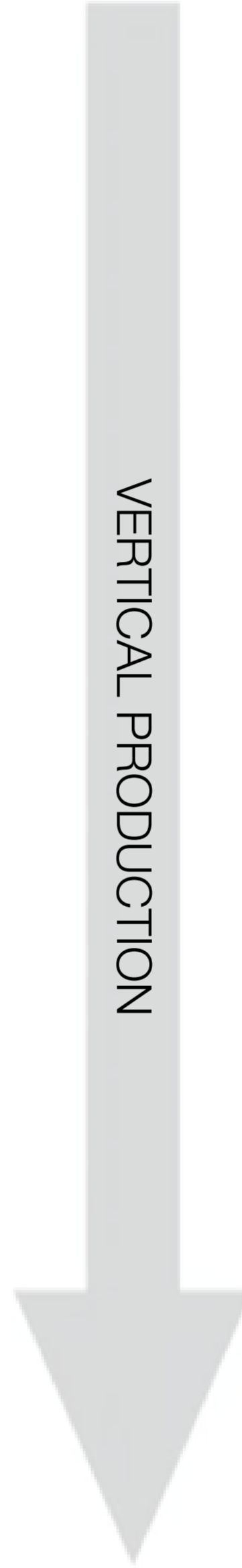
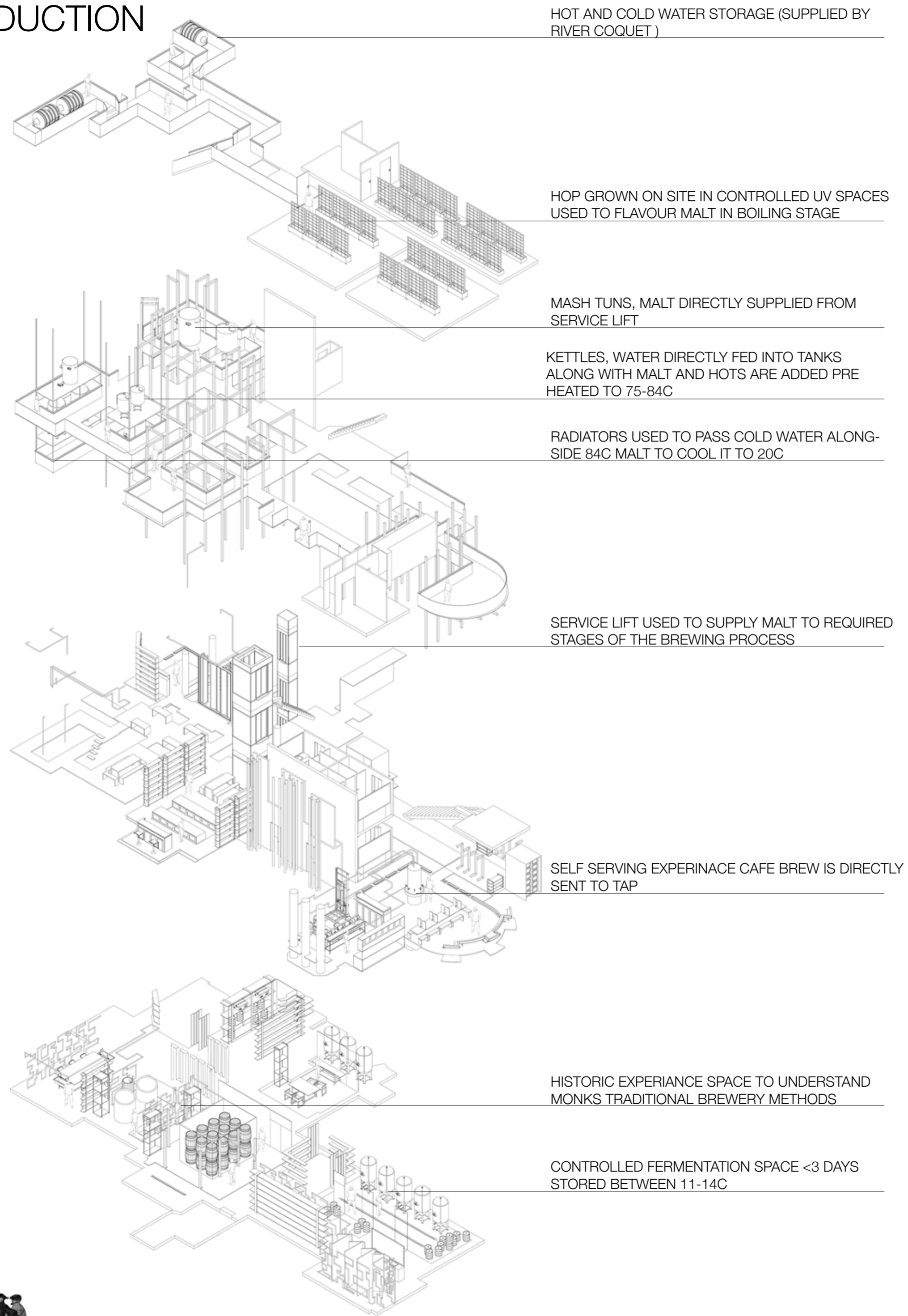
Functional analysis of current beer making process (Etching)



Initial visual collage to express concept within the walls of Brinkburn



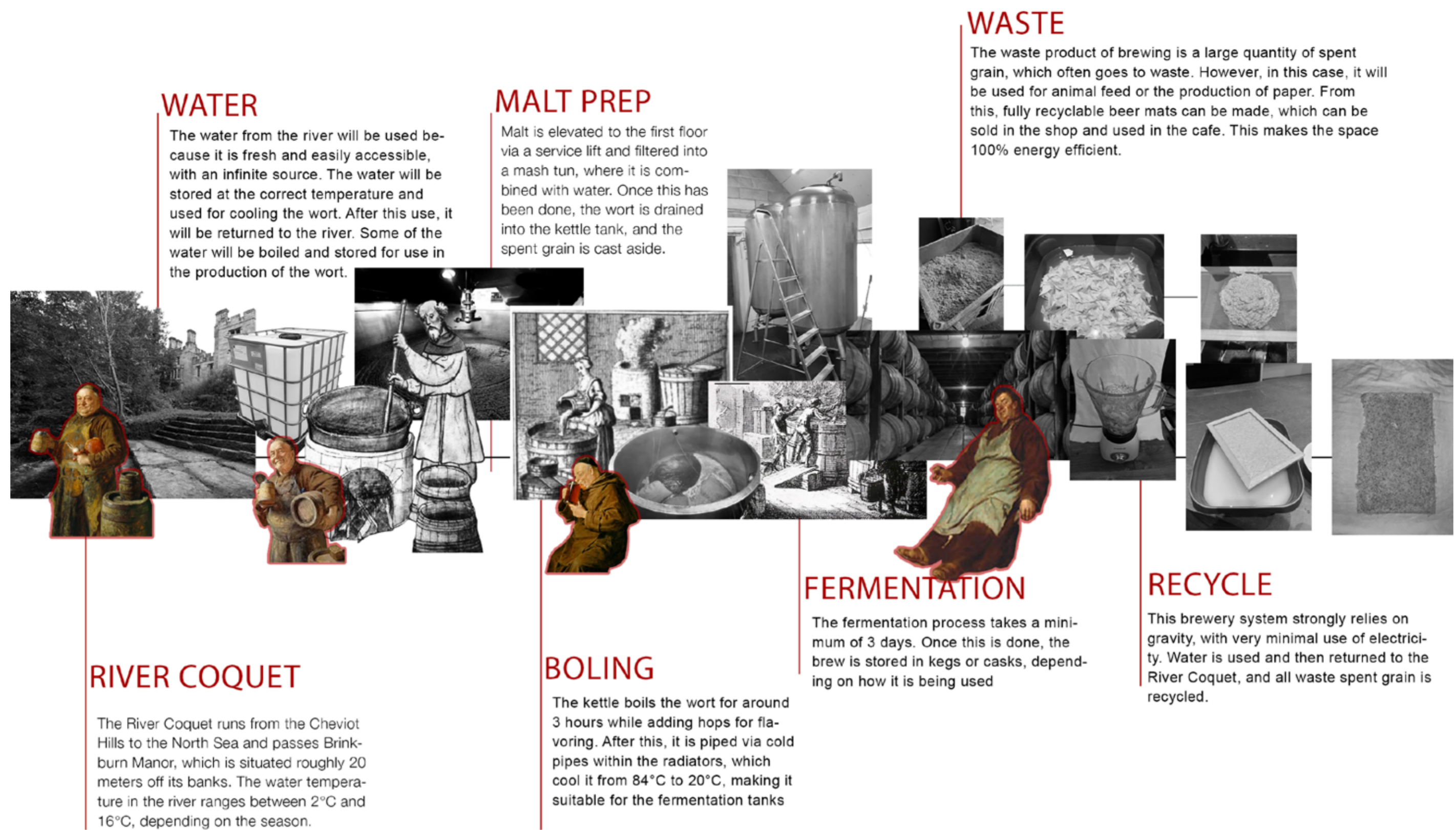
PRODUCTION



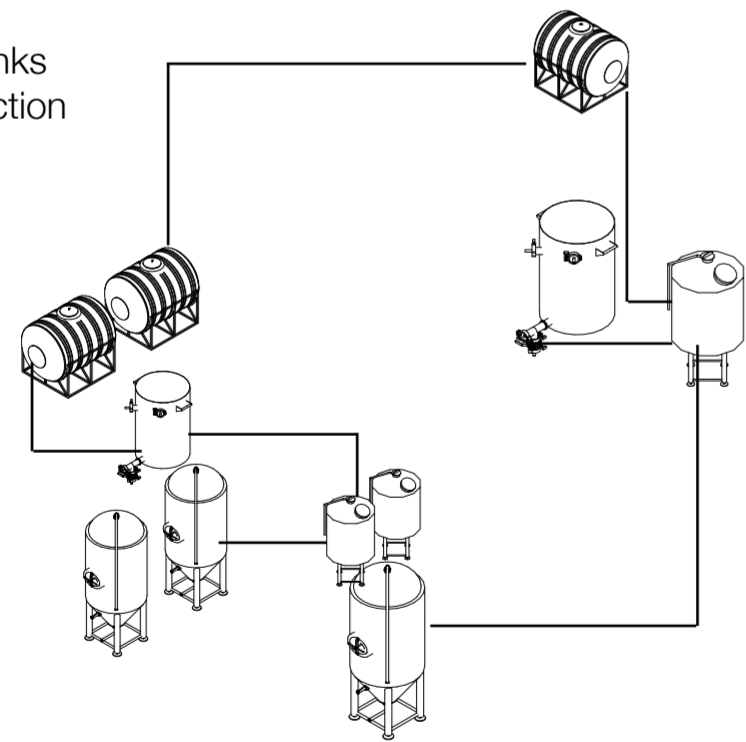
INTERVENTION

Brewery timeline

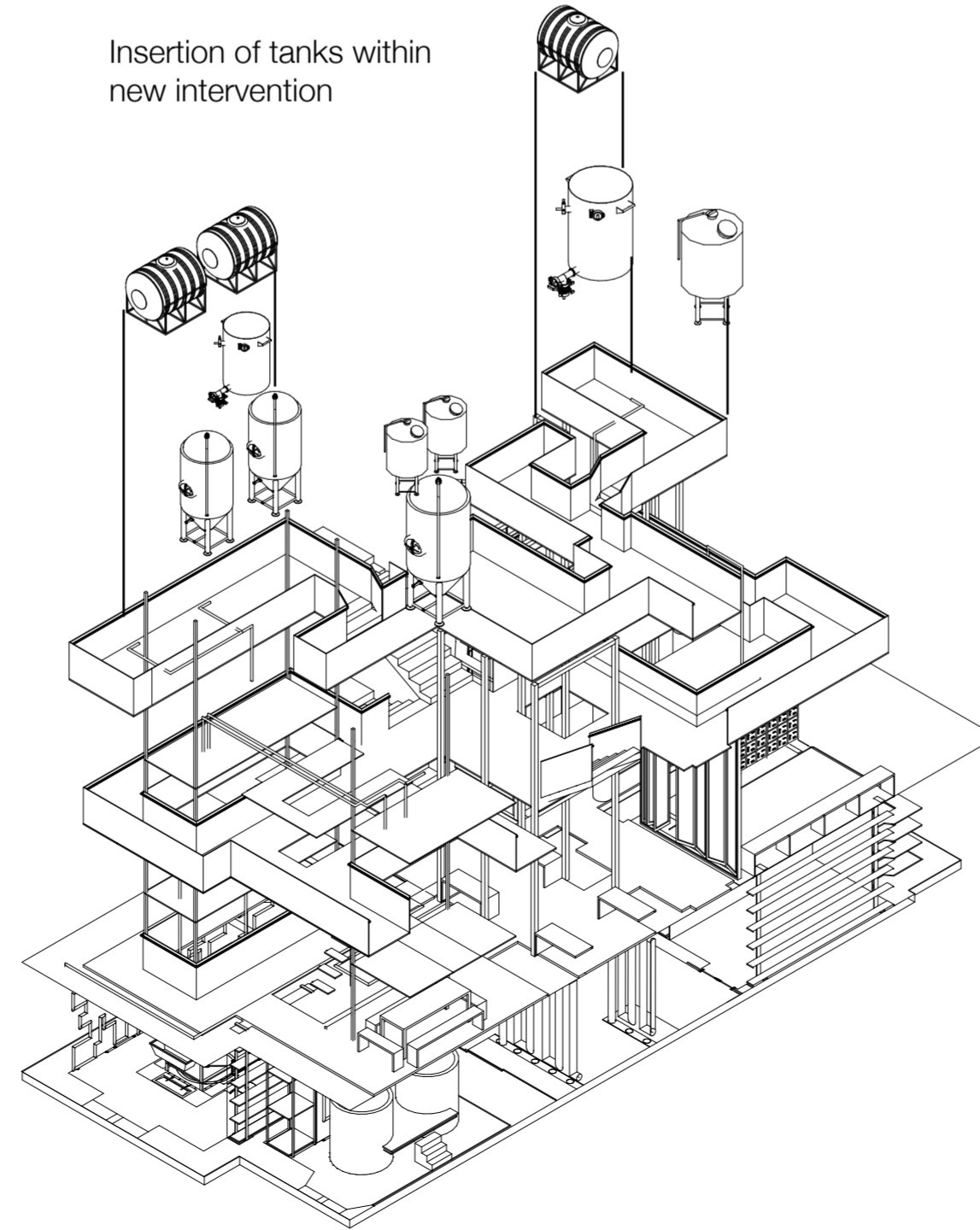
This timeline outlines each stage of the brewing process, explaining how waste materials, such as spent grain, are recycled and how water from the River Coquet is utilized.



Brewery tanks and connection

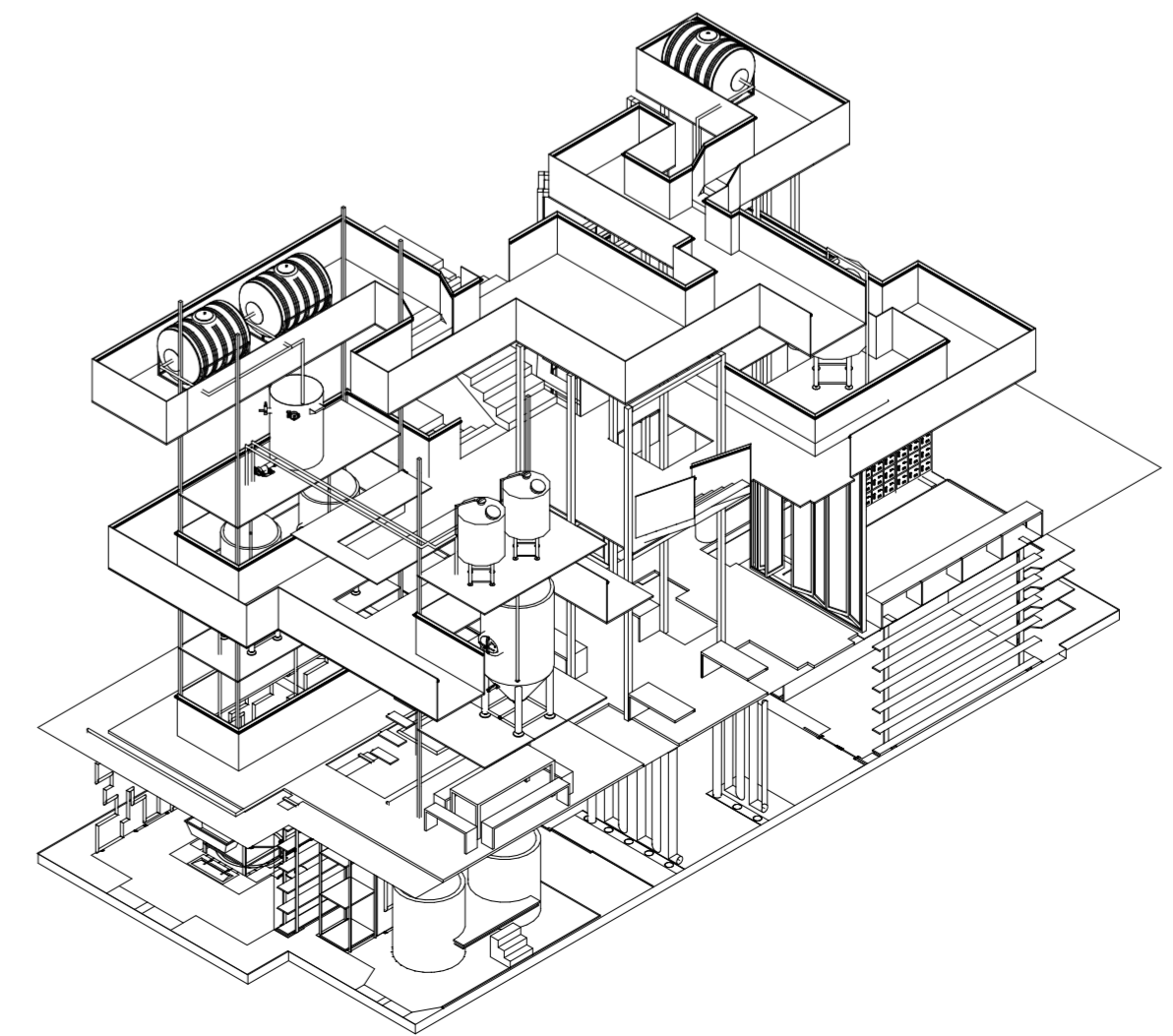


Insertion of tanks within new intervention



Intervention

These diagrams illustrate how the brewery system is integrated within the building, aligning with existing floor levels and triple-height spaces. They also highlight new walkways that provide access to different levels within the space.



MATERIALITY

Key renders



Visual 1: This illustration depicts the new walkway within Brinkburn Manor, showcasing the materiality (Corten steel) and the tower brewery production levels



Visual 2: This illustration depicts the fermentation tanks along with access to the production level. Including a tasting area

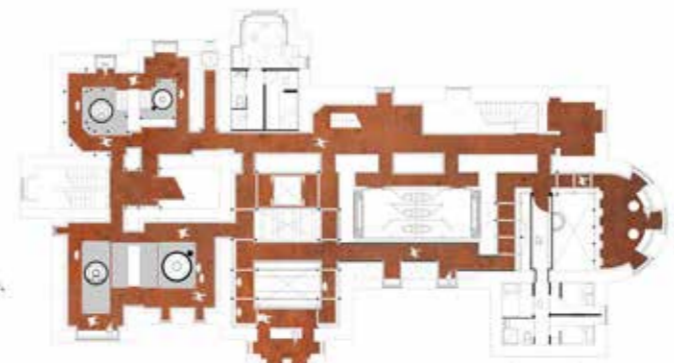
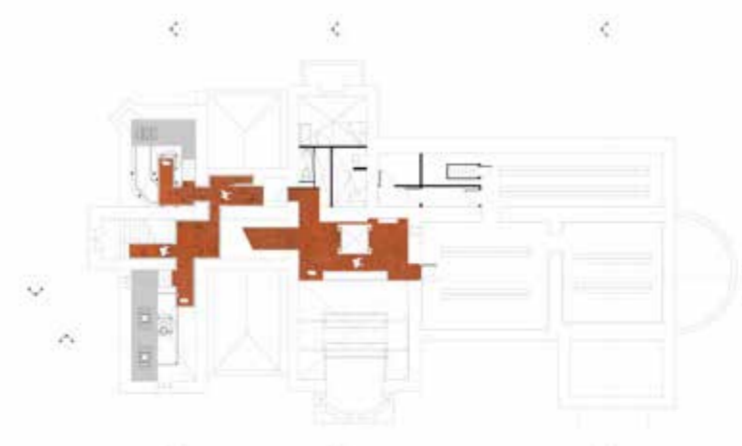


Visual 3: This illustration depicts the cafe space where the self service beer tap is on show

Detail model making at 1-30 investigating tower brewery and materiality



1-20 detail axonometric study showing tiered levels and materiality



Aluminium

Main material used for walkway balustrade for its light weight and excellent strength properties.



Copper

Copper pipes are used within the brewery although it is expensive it has excellent heat conductivity and antimicrobial properties. Maintaining the quality and flavour of the beer.



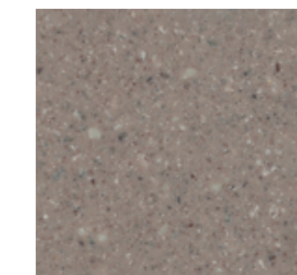
Corten Steel

Corten Steel is the main material used in this scheme it is used on the floor of the walkway as it is durable, low maintenance and contrasts well to the existing building



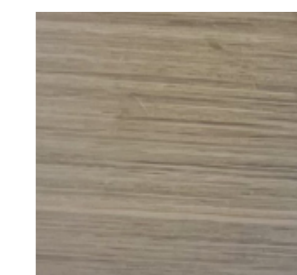
Neo Timber cladding

Made from sustainable materials and easily recyclable. Use on the ground floor because it is durable and give the same warmth as real timber



Resin floor tile

Used for the cafe and bar area for its seamless design and durable surface contrasts well against the timber flooring



Oak wood

Used for the handrails and the furniture for its strength, durability and long lasting properties

