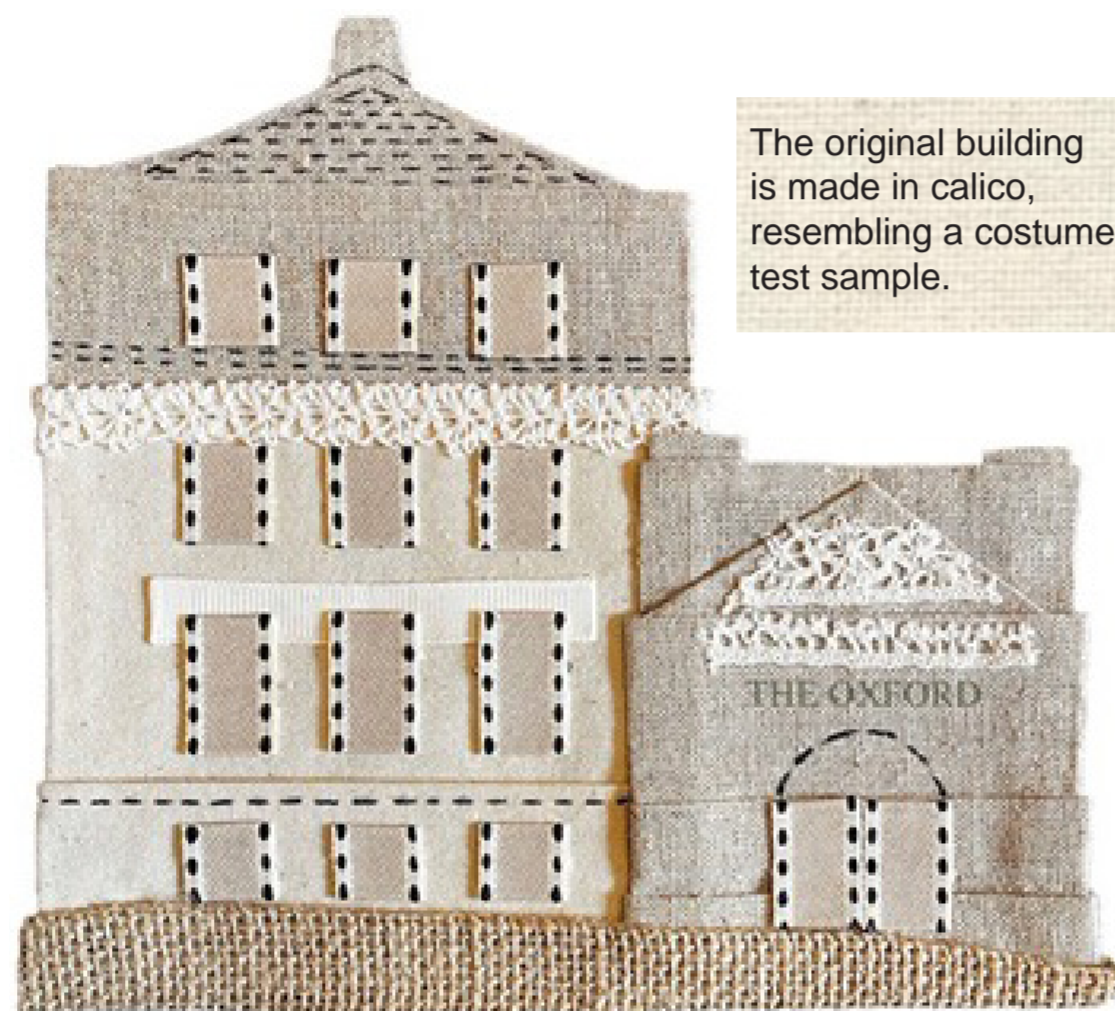


# THEATRICAL STITCH

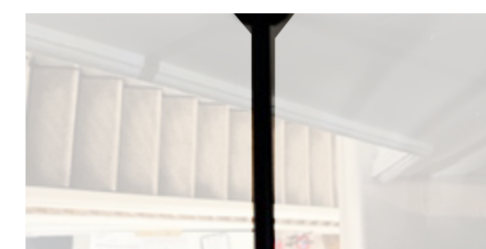
## John Dobson House - Theatre Costume Design



### Building Response:



The original building is made in calico, resembling a costume test sample.



The exposed structure in the building is like the hidden structure in a theatre costume.



### Serial Vision:

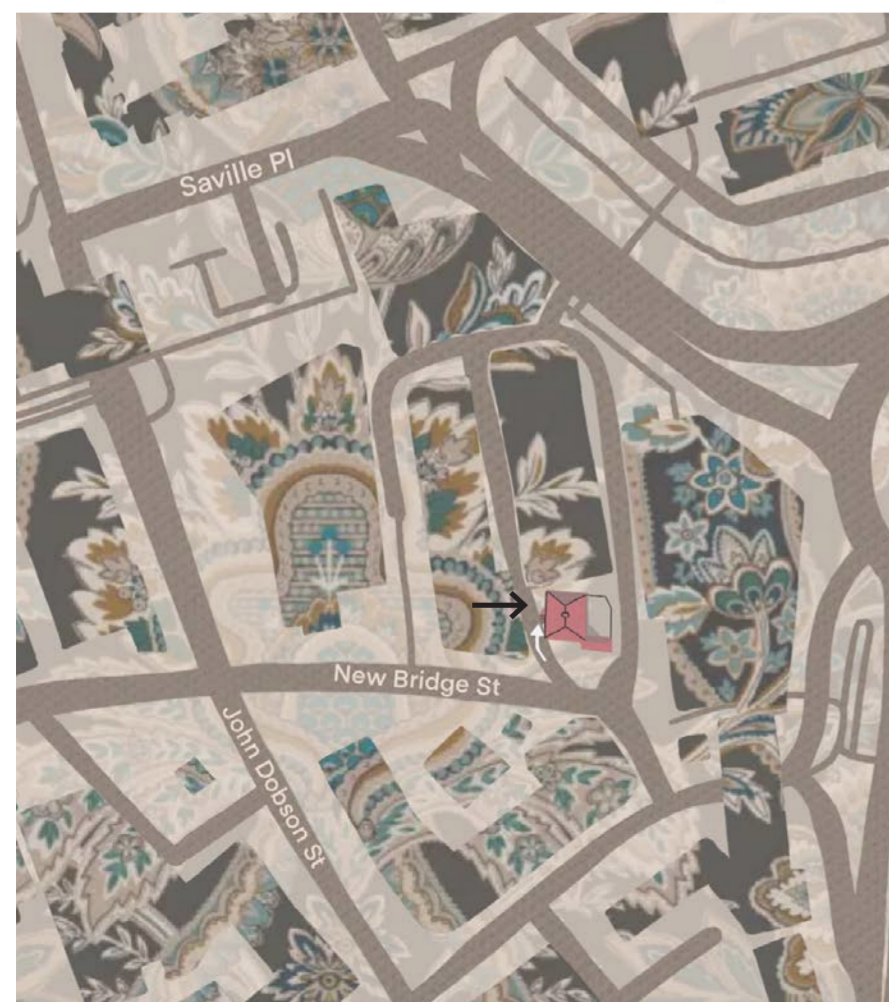


John Dobson house is located in Newcastle upon Tyne on New Bridge Street, built in 1823 by Architect John Dobson as a family home it is now Grade II\* listed. Over the years it has been "stitched onto" with a new 2nd floor, portico and various rear extensions which have since been demolished.

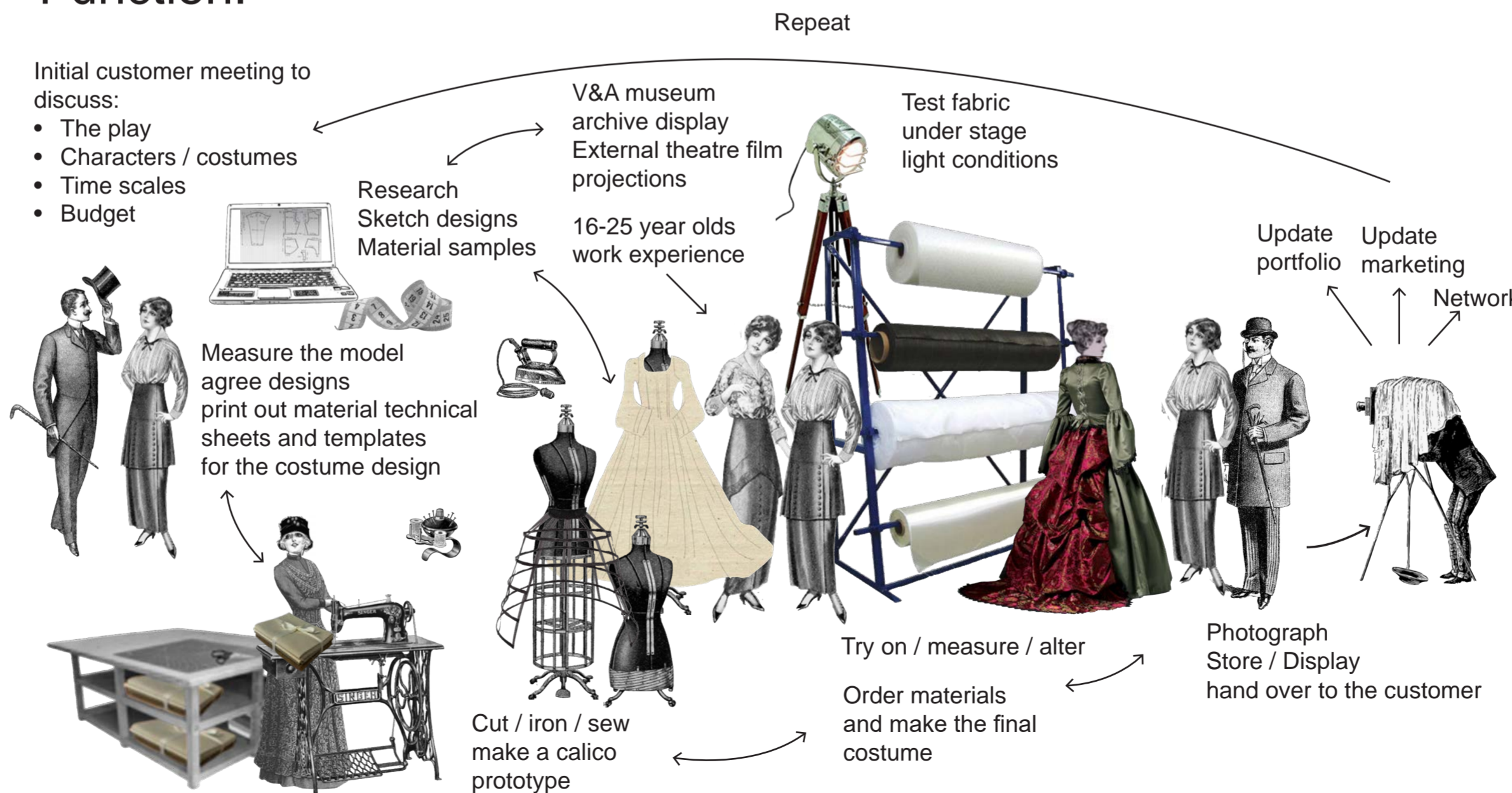
Researching John Dobson focused the attention onto materiality and theatres. At age 11 he designed damask patterns for local material artists and he built the first theatre in Newcastle in 1835. The building is located on the blue carpet within the CCZ funding area for 16 - 25 year olds to get involved with theatre production.

This proposal will commercially design and producing costumes for the 10 local theatres. Enabling young adults to gain work experience, update their CV, portfolio and be inspired by the creative surroundings, outside theatre film gatherings and archive displays from the Victoria and Albert Museum in London.

### Site Plan:



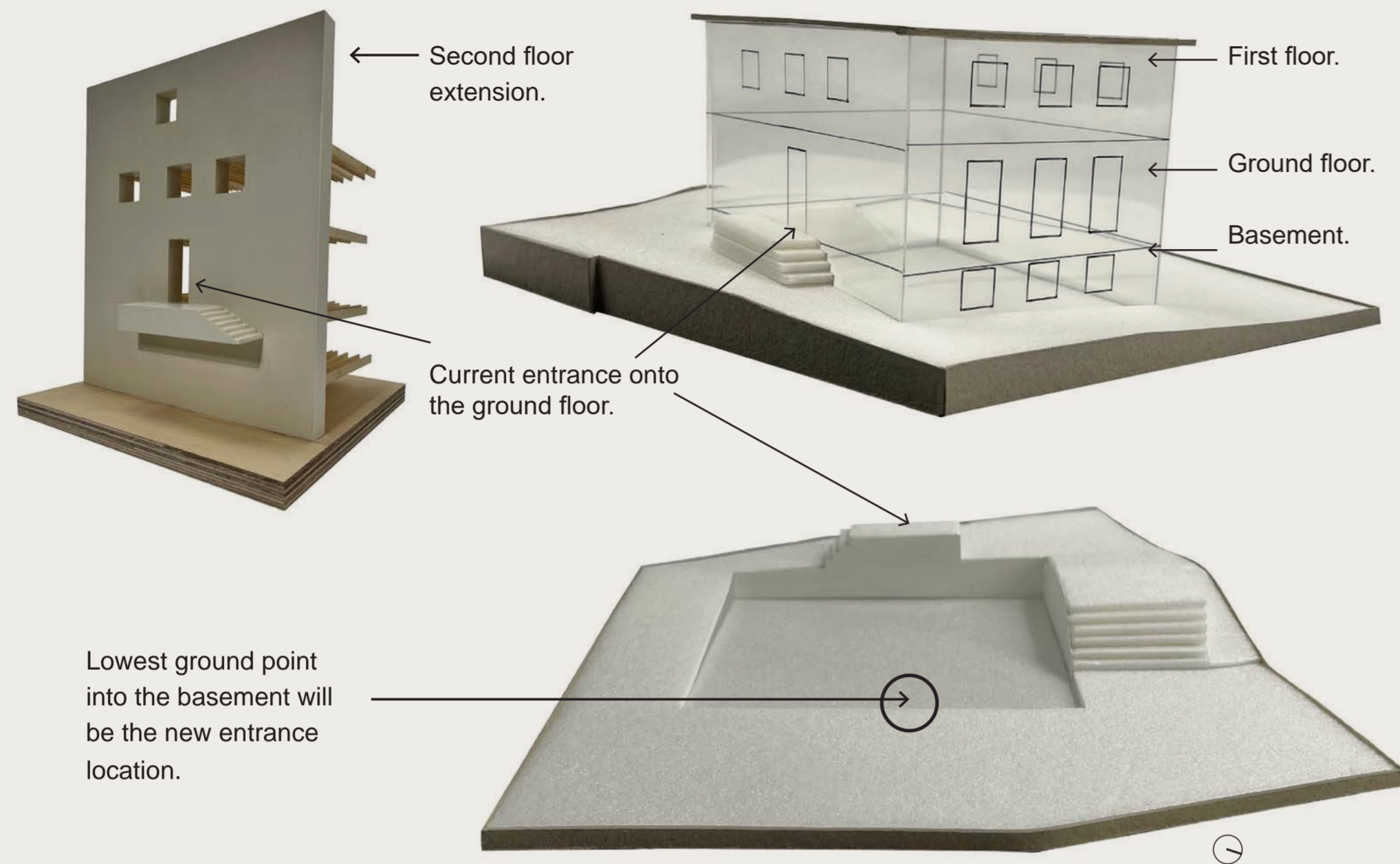
### Function:



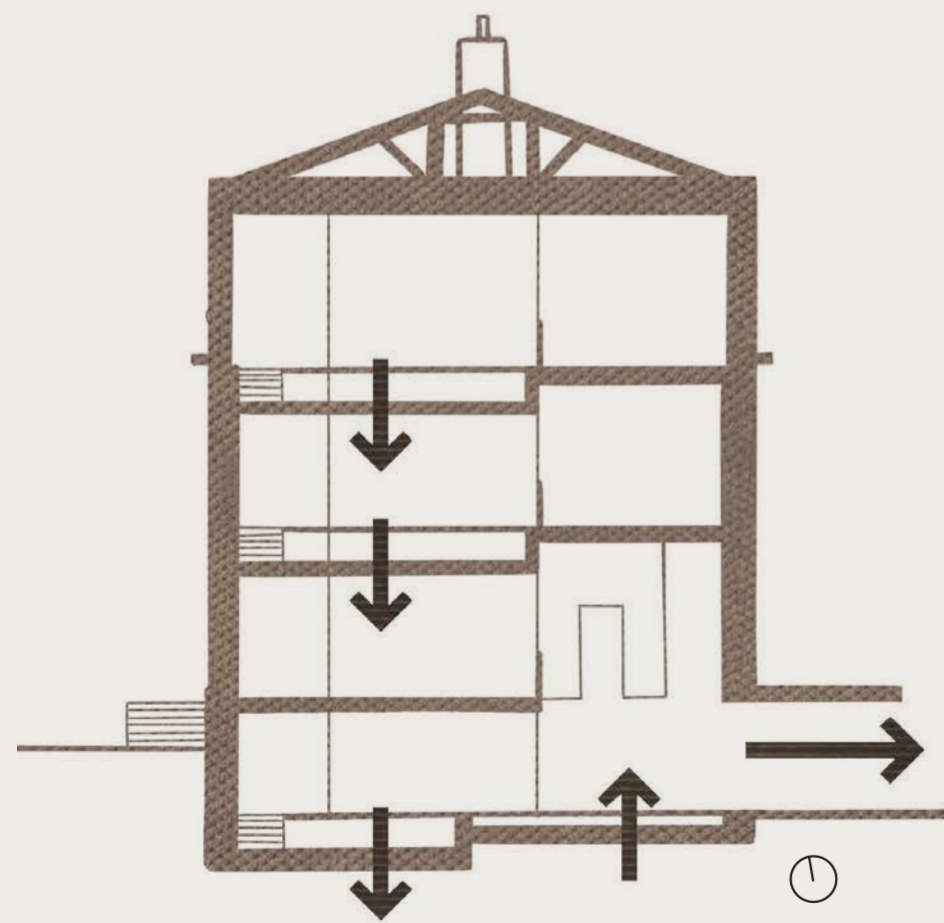
“Designing costumes surrounded by inspiration and theatrical materiality”



## Models To Show The Current Inaccessible Entrance:

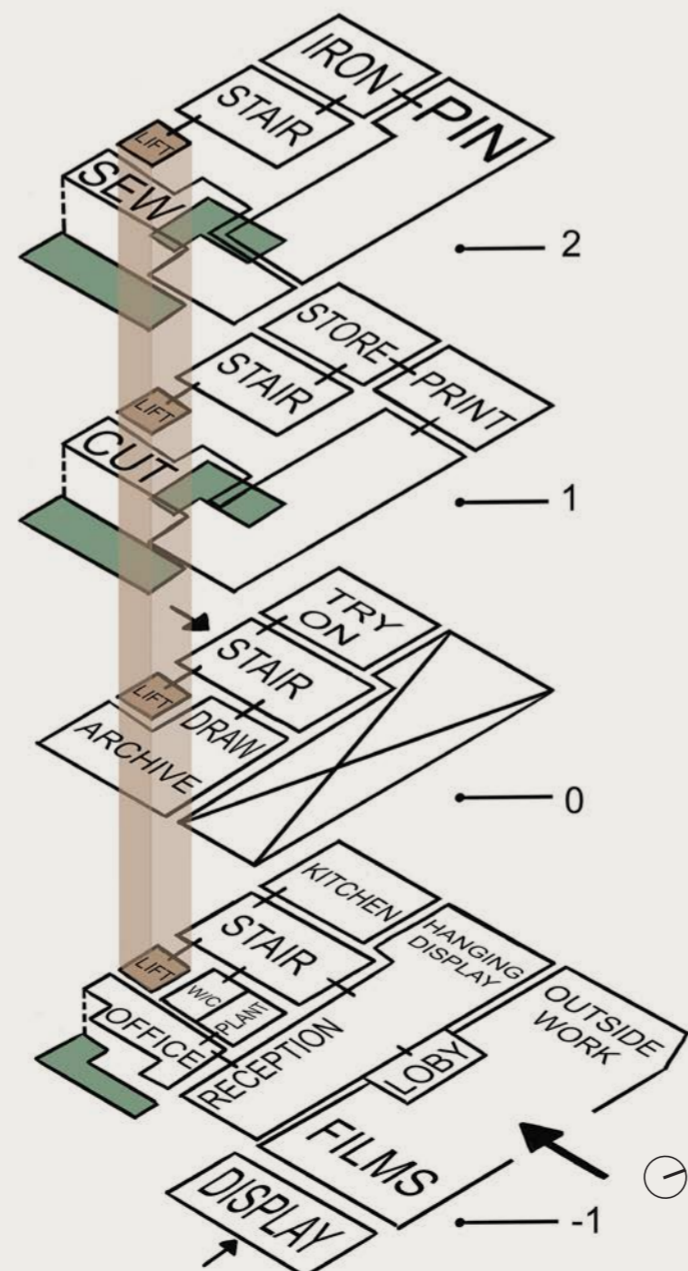


## Key Moves:

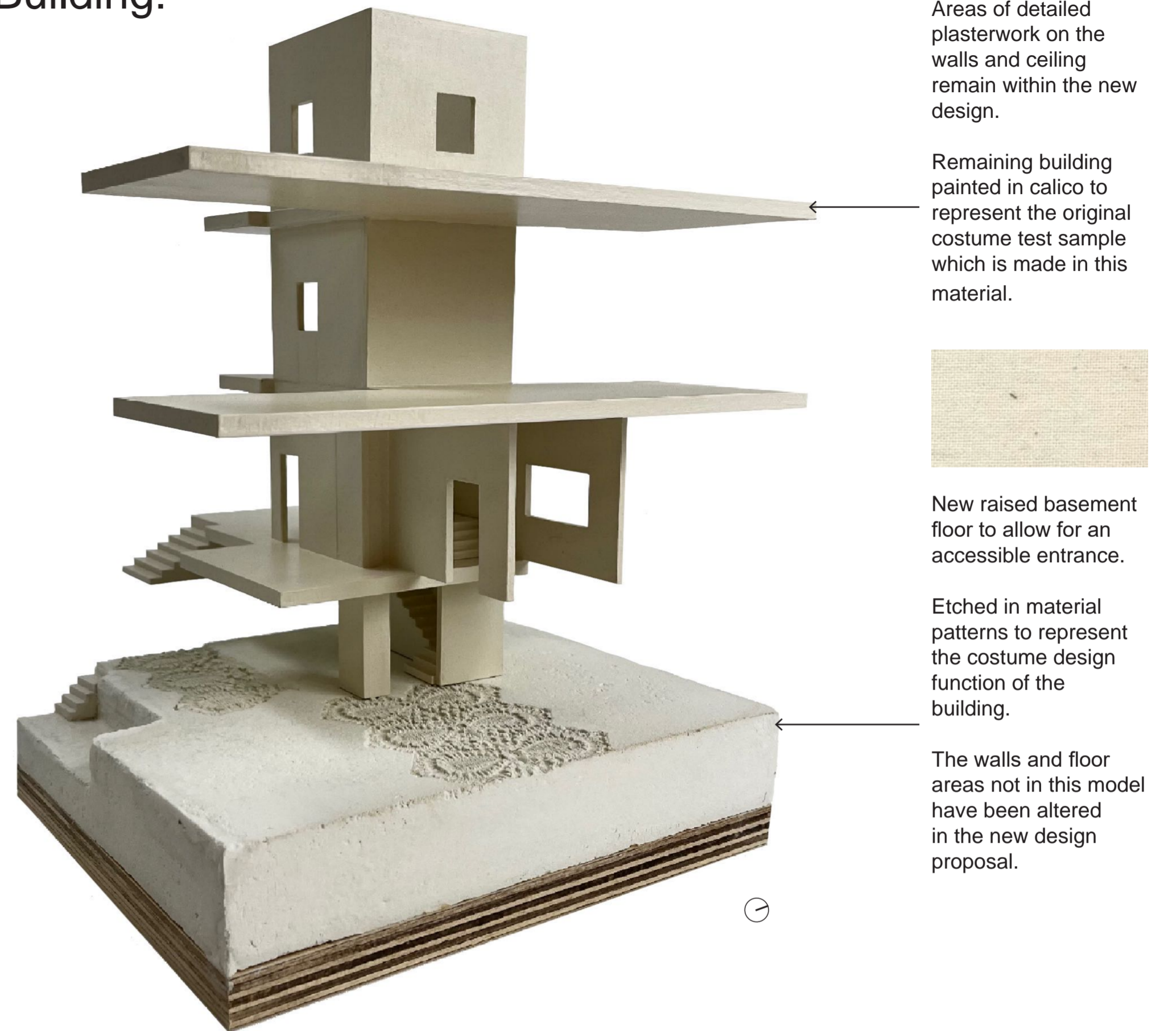


- 1 No alterations to areas of stucco plaster.
- 2 Floor level and material changes to bring in light and visual connections.
- 3 New accessible basement floor and entrance location.
- 4 Theatrical theme throughout.

## Block Plan:



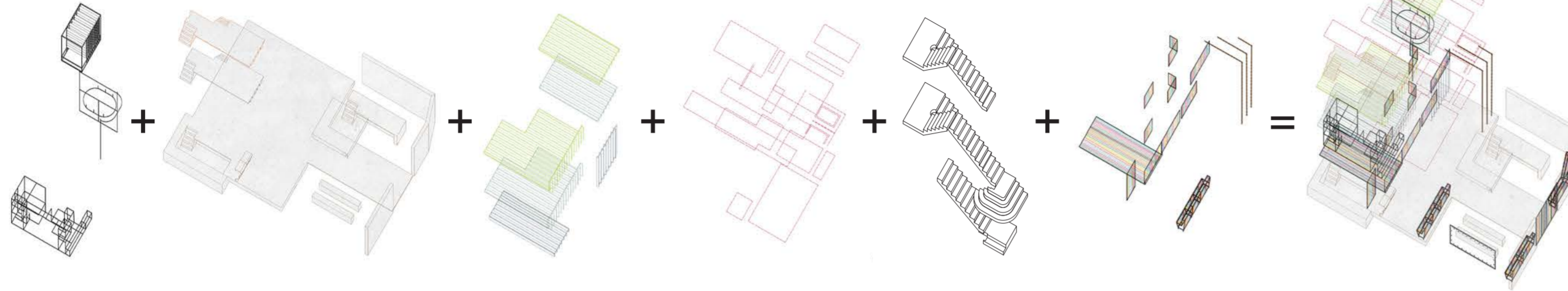
## Model To Show The New Basement Floor And Remaining Building:





# Material Strategy Diagram:

Black metal bespoke fixtures.    Material etched concrete.    Exposed joists and glazing.    Original detailed ceilings.    Original staircase.    Black metal framed thread features and display ropes.



# Short Section A:

KEY:

- 1 Sewing area.
- 2 Cutting area.
- 3 Drawing desk and archive display.
- 4 Hanging display in the double height void.
- 5 Sunken office / computers - research, design, CV and portfolios.
- 6 Reception.
- 7 Built in overhead projector and lights.
- 8 External courtyard / working / seating / networking area.



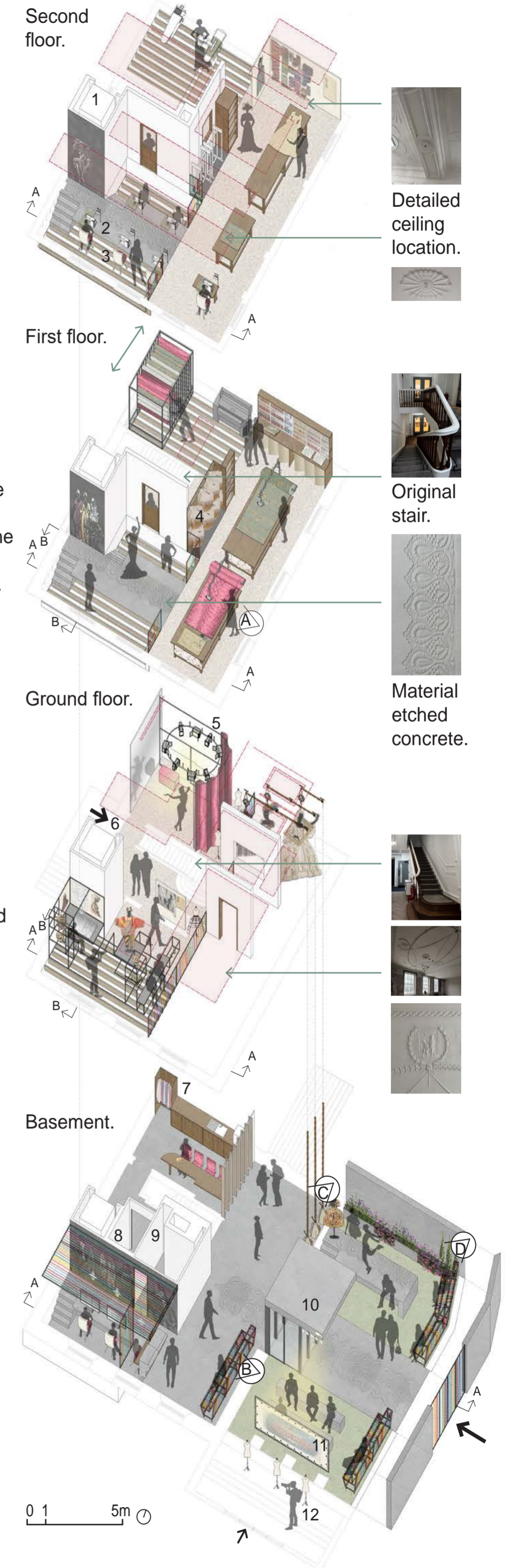
0 1 5m

# Axonometric:

KEY:

- Flat = no change
- Extruded = new design.
- Location of perspective image.
- Entrance.
- Detailed ceiling location.
- Section A cut line.
- Axo detail B location.

- 1 New larger lift.
- 2 Material etched concrete table / walkway / industrial sewing machine area.
- 3 New lowered glass floor. Hanging pattern sheets.
- 4 Velvet stage curtain for privacy when trying on the costumes and stage lighting to test out the materials under stage conditions.
- 5 Original entrance.
- 6 Staff kitchen.
- 7 Disabled unisex toilet.
- 8 Plant room.
- 9 New entrance with a 2m lobby and 1m canopy with built in projector and lights.
- 10 Projector screen.
- 11 Costume display in the portico.
- 12



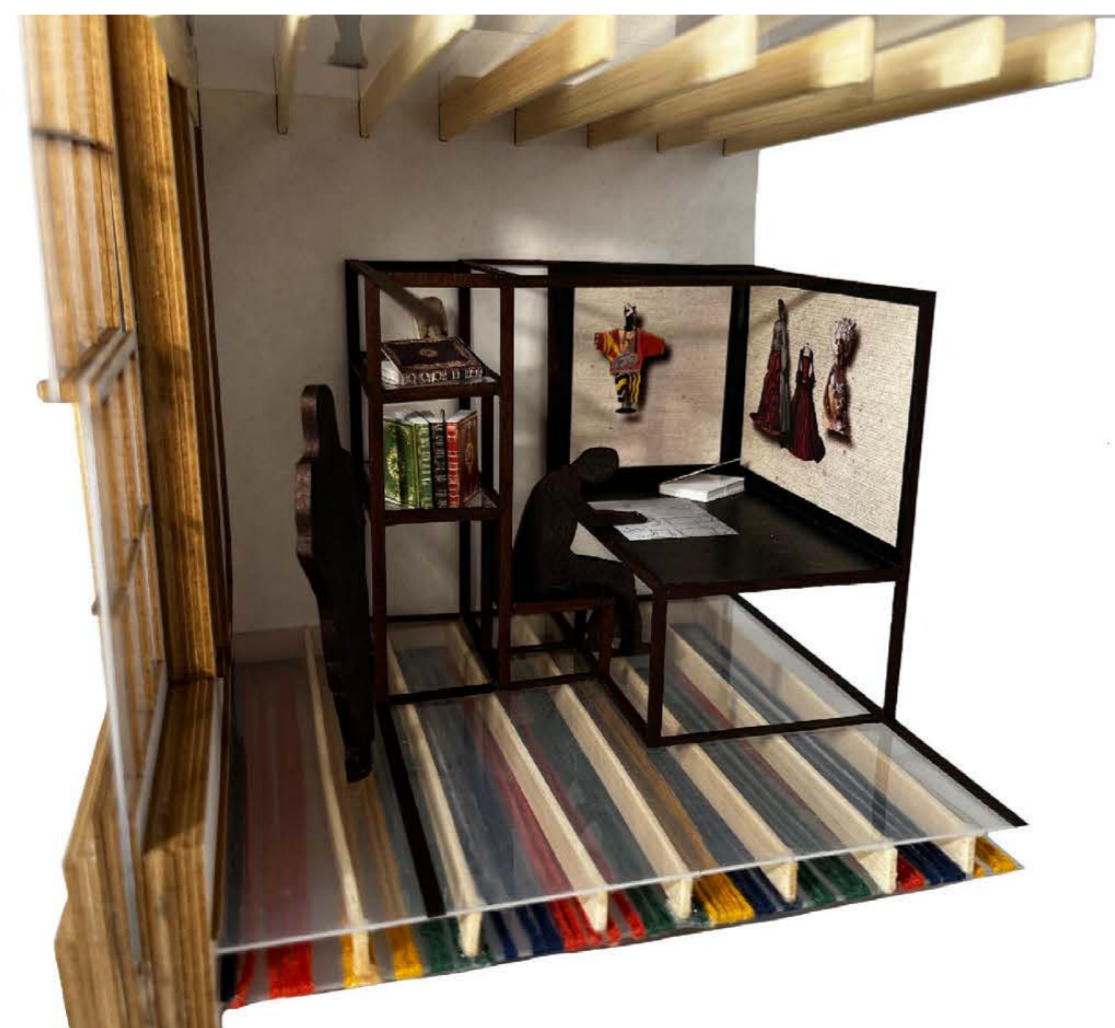
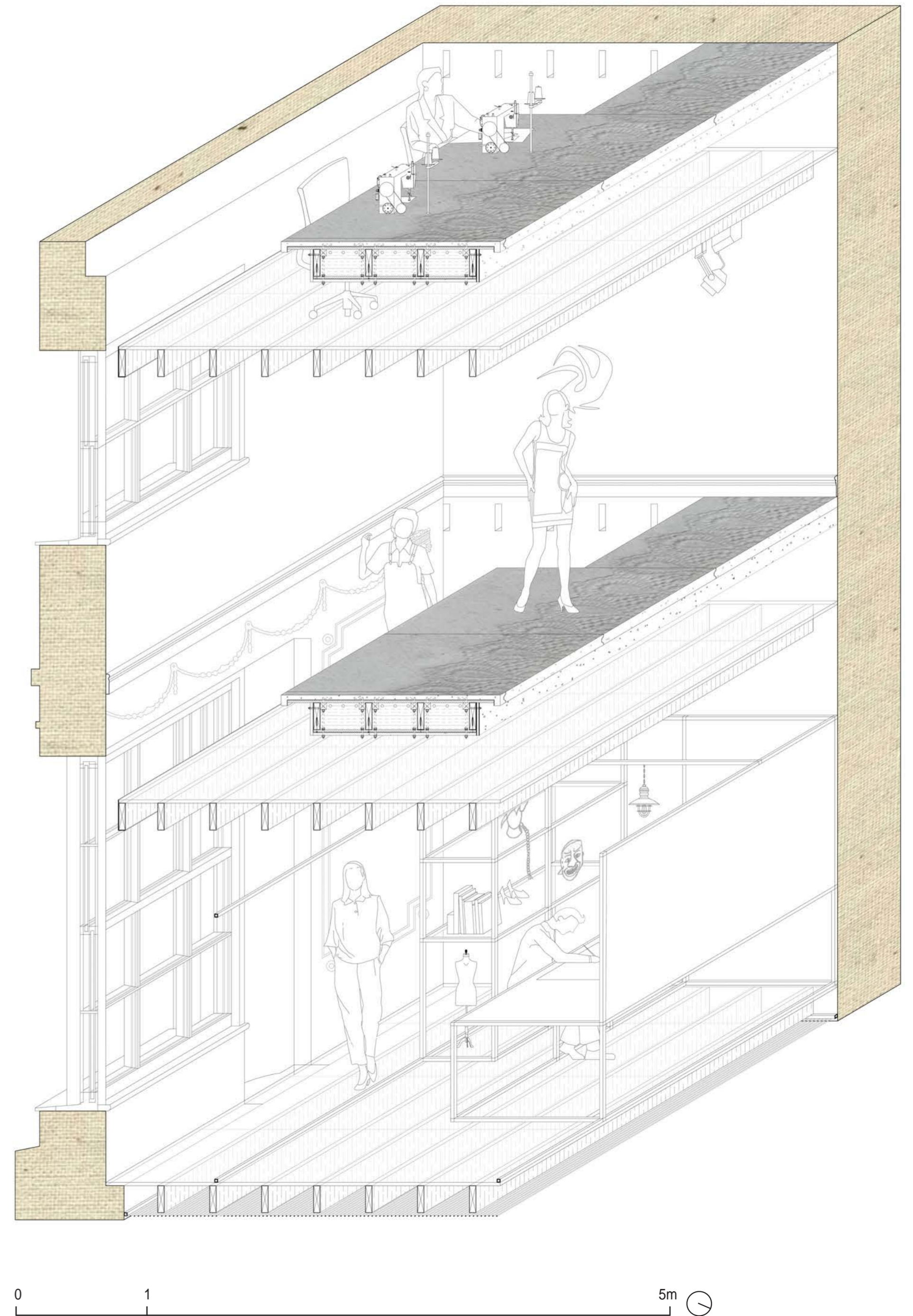
0 1 5m



1:20 Model Detail B:



1:20 Axo Detail B:





# Perspective Visuals:

- A First floor cutting room.
- B Reception - sunken orchestra pit office, views up to the ground floor archive and drawing room and above cutting room.
- C Basement - double height void, hanging displays and dramatic stage set walls, showcasing the beautiful ceilings.
- D New courtyard entrance.

