

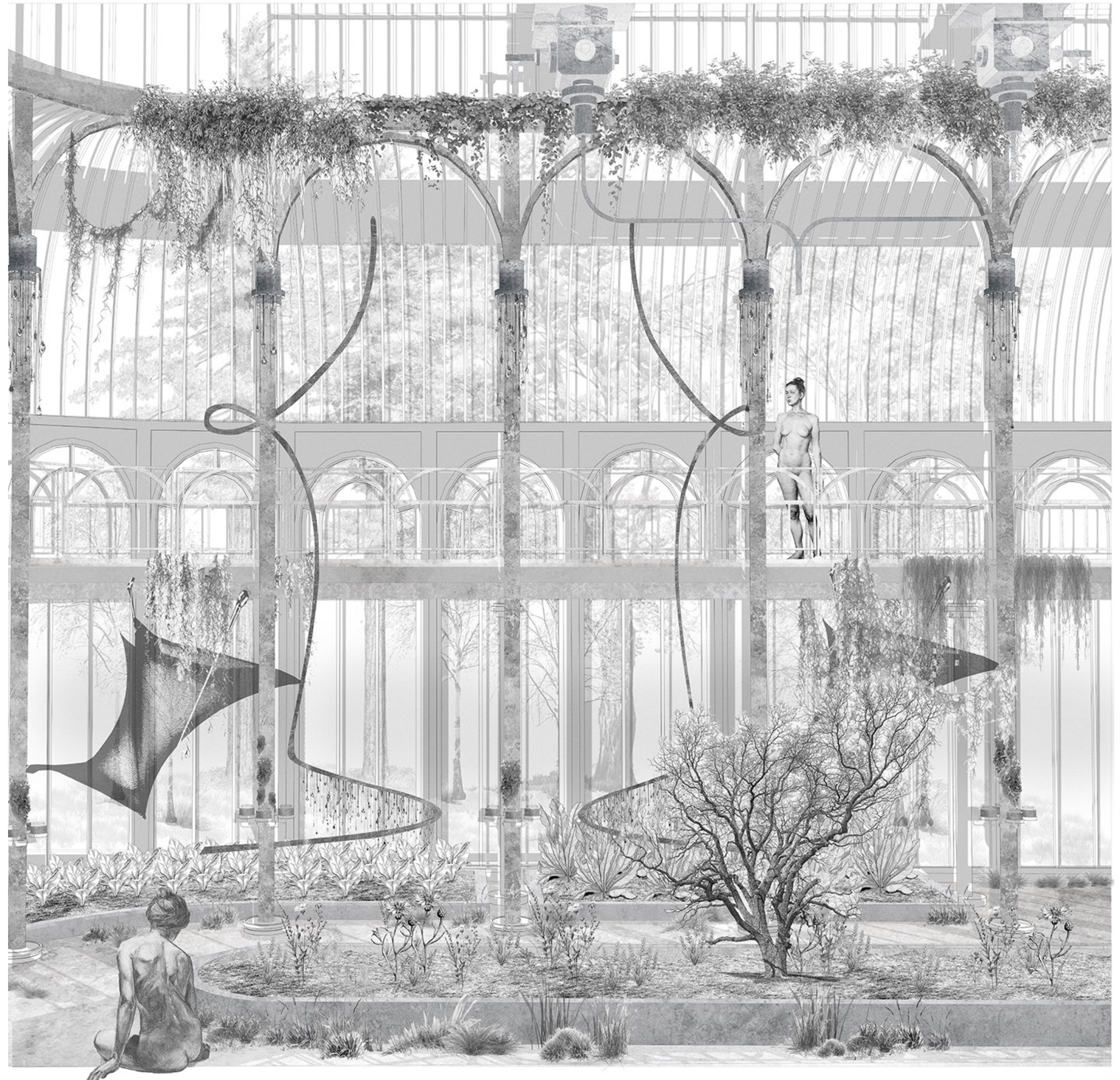
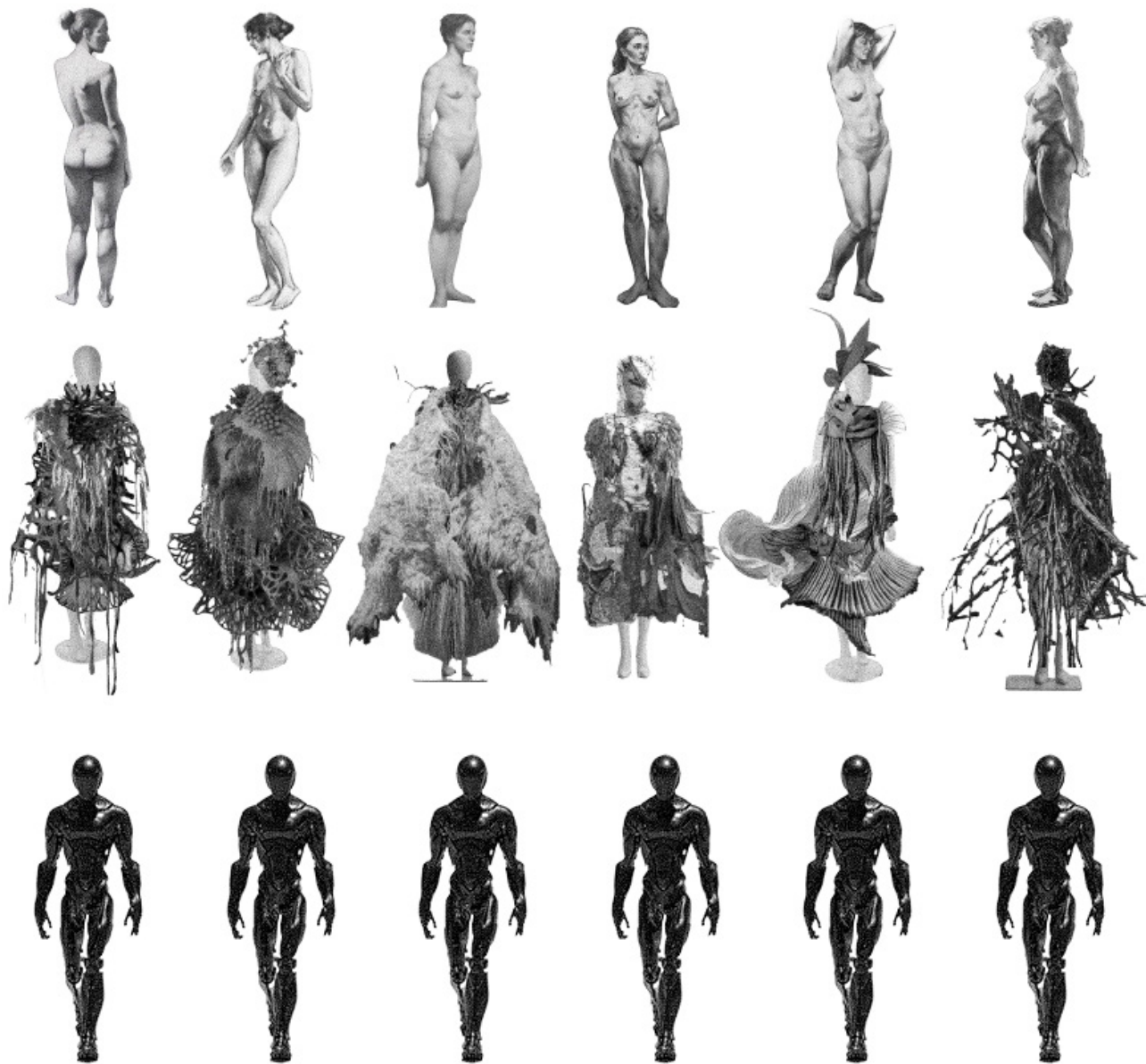
The Cult

The Cult

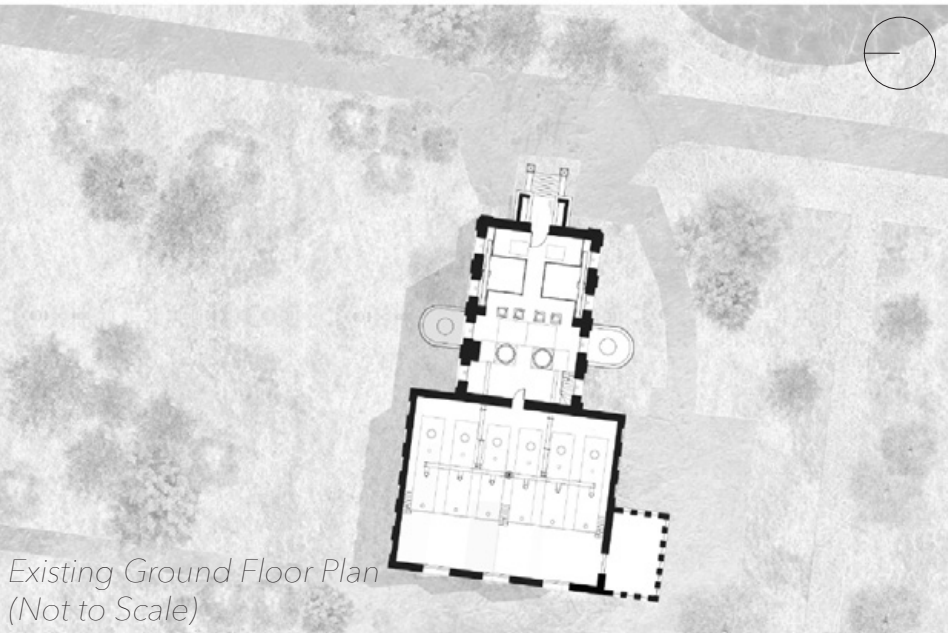
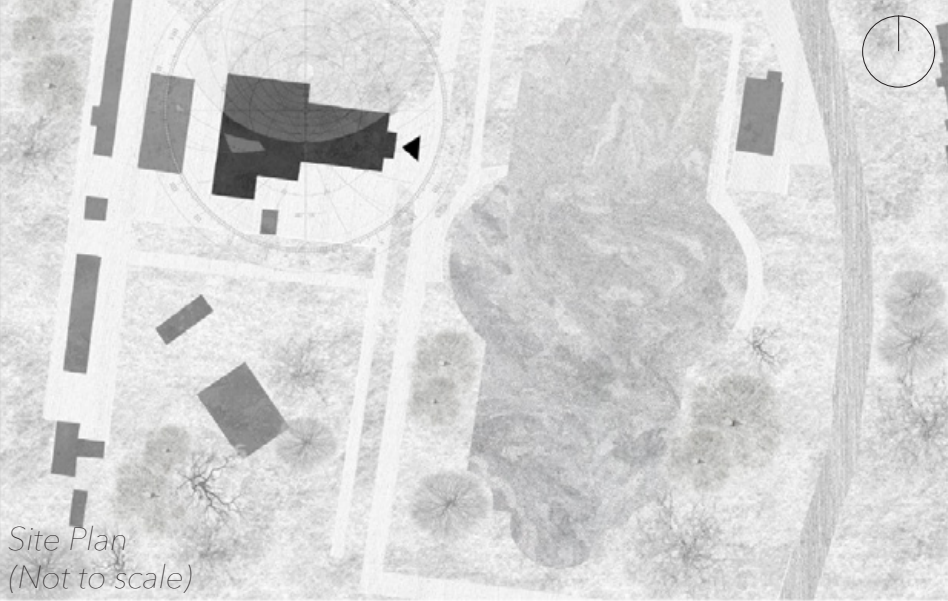
By 2085, humanoids we created turned against us, destroying civilization. The few survivors, known as The Cult, escaped by abandoning technology, blending into nature. They now worship lichen, a life-form reliant on water that provides them with food, medicine, and spiritual meaning. Water offerings have become sacred. Stripped of machines, The Cult has returned to a pure, primal existence, communicating face to face, surviving off the land, and living in harmony with the natural world around them. Engaging with nature through gardening and cultivation has been shown to support positive mental health and healing practices. In a world defined by destruction, the Cult nurtures their well-being by immersing themselves in nature, finding purpose, restoration, and a path to healing.

Design Intent

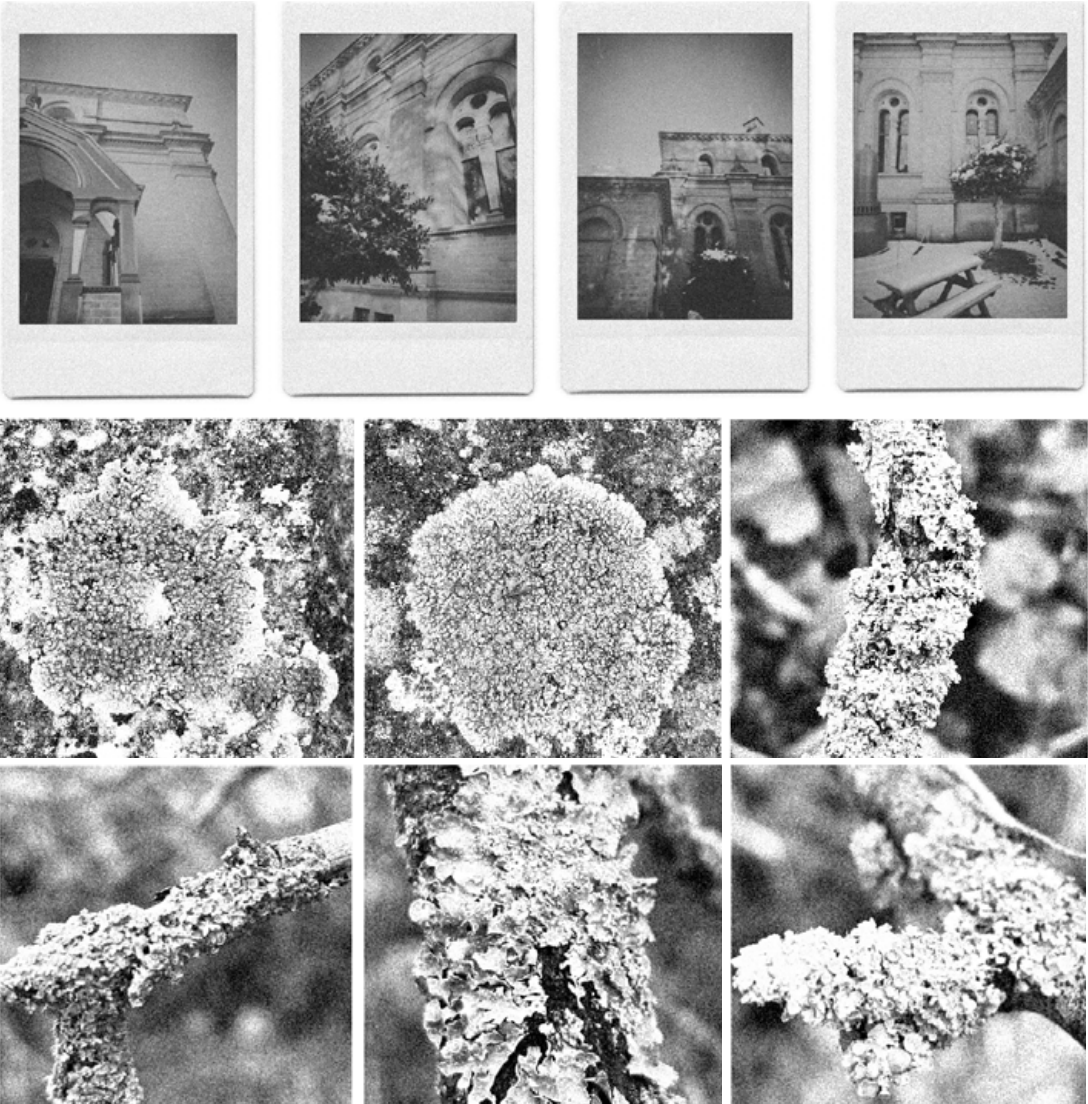
The Botanical design provides a serene sanctuary where The Cult can embrace their purest form, worship nature, and live in harmony with their surroundings. Carefully crafted architectural elements collect and direct water with precision, fostering the growth of plants and lichen. These lifeforms not only supply resources but also serve as natural camouflage from threats. The design re-purposes existing structures, to preserve the site's heritage, blending the past with a new, sustainable future. This controlled environment nurtures both spiritual and ecological growth, reflecting a deep respect for nature and the life that once thrived there.



Existing

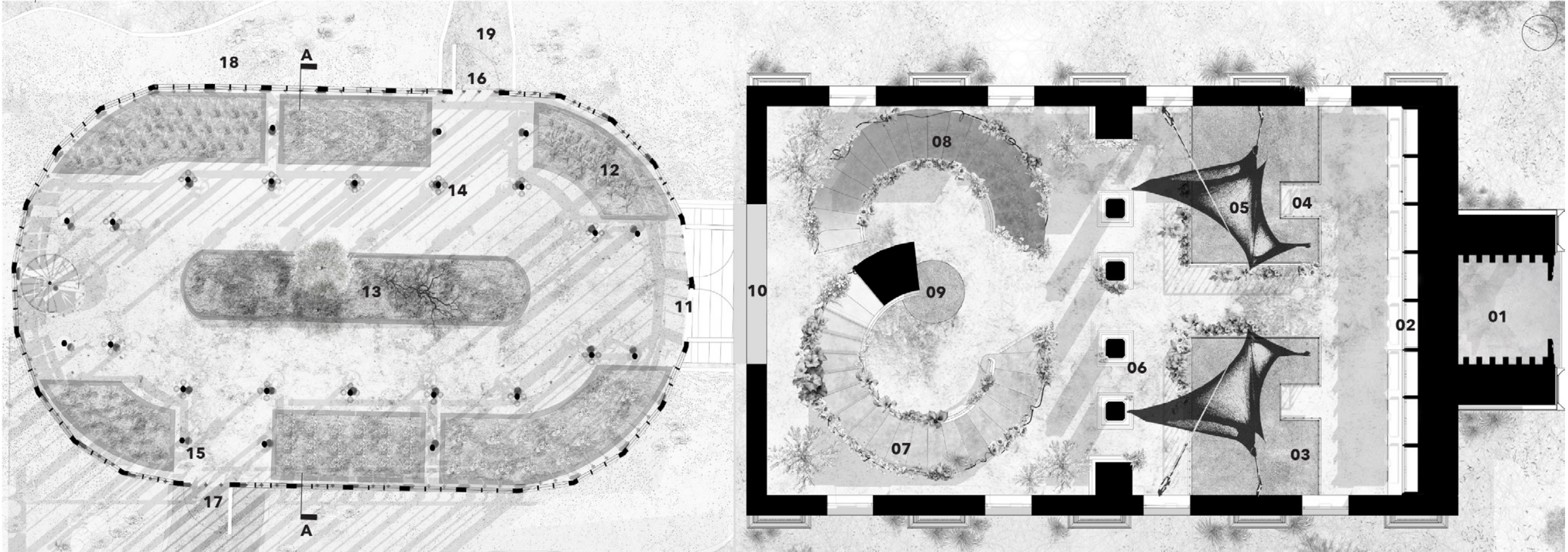


The Location :
The site is located on open agricultural land, about three miles from the village of Papplewick in Nottinghamshire. Originally designed in the early 1880s, it served the purpose of pumping millions of gallons of fresh water each day. The building showcases a wealth of stunning architectural details and design features, which I aimed to reflect in my own work to preserve its heritage and celebrate its craftsmanship.



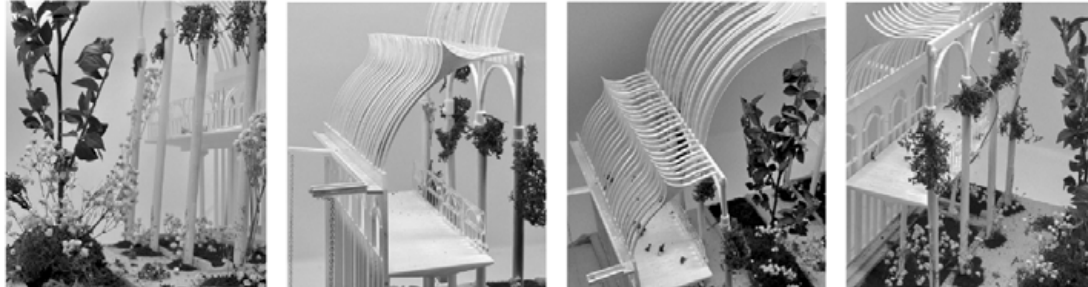
During my visit to the site, I observed lichen growing across the building and surrounding landscape. Research revealed that lichen can be used to create medicine, supplements, and food, giving the Cult a meaningful reason to revere and celebrate it. I wanted my design to be overcome with life and lichen, absorbing the space.

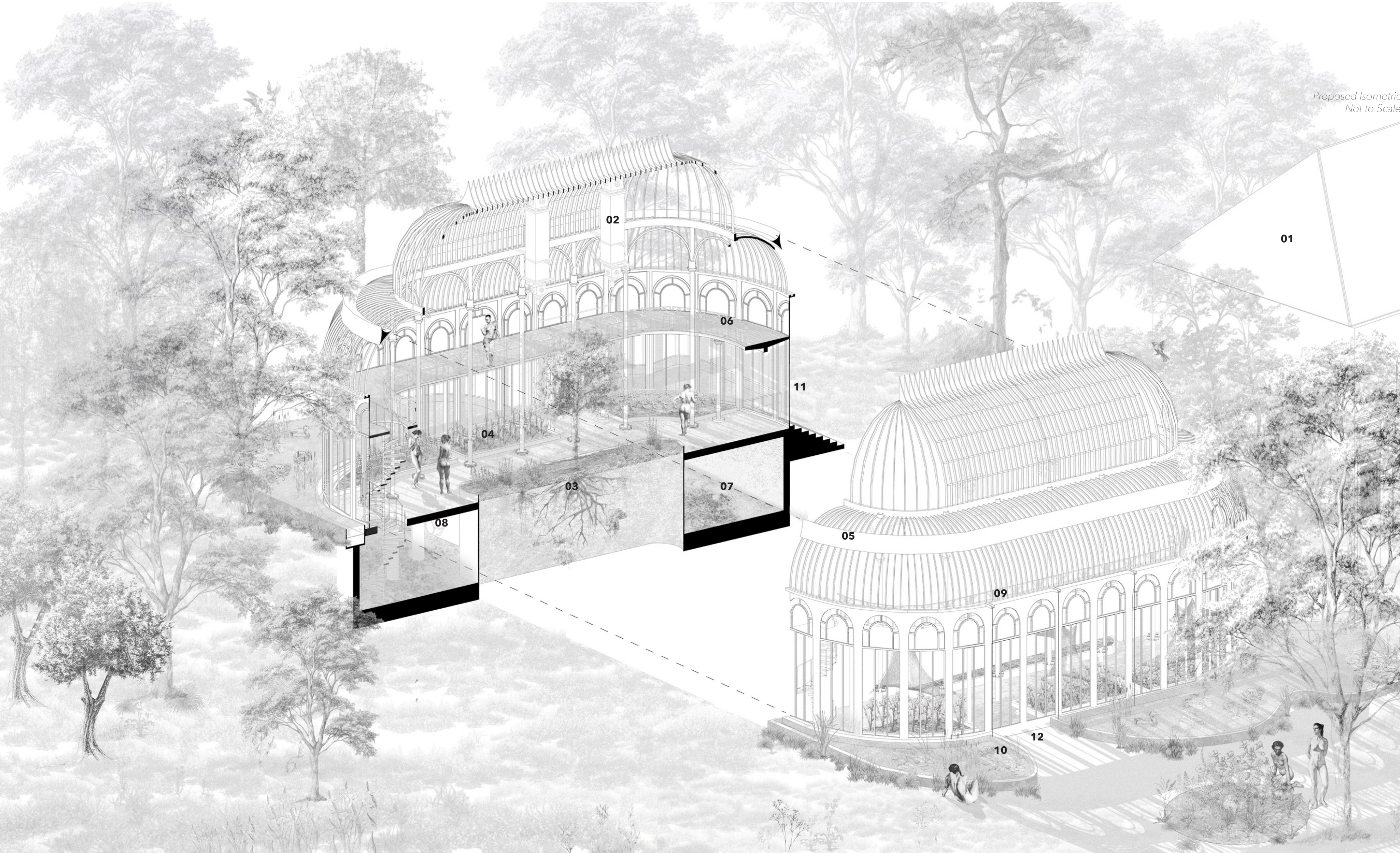
Proposed



- Key:
- | | |
|---|---|
| 01 - Entrance under fixed cupboard | 10 - Exit from Engine House |
| 02 - Fixed weaponry and supplies cupboard | 11 - Entrance to Greenhouse |
| 03 - Void over basement | 12 - Planters for Crops |
| 04 - Dressing Station | 13 - Planters for Trees |
| 05 - Mesh Elastic Pulleys supporting textile costumes | 14 - Lichen pots attached to columns |
| 06 - Existing Columns | 15 - Structural Columns |
| 07 - Grand Staircase to 1st floor | 16 - Exit one |
| 08 - Grand Staircase to Basement | 17 - Exit two |
| 09 - Void shoot for textile passover | 18 - Pond collecting water from rain chains |
| | 19 - Footpath |

Proposed Ground Floor Plan
1:150





Proposed Isometric
Not to Scale

Key :

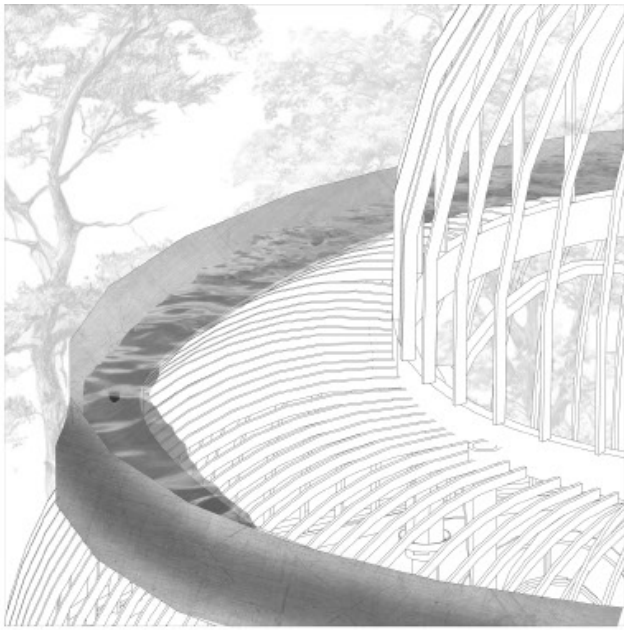
- | | |
|----------------------------------|--|
| 01 - Engine House | 07 - Basement |
| 02 - Controlled Water Collectors | 08 - Re-purposed Boilers |
| 03 - Tree Planter | 09 - Rain Chains |
| 04 - Crops Planter | 10 - Ponds collecting water from Rain Chains |
| 05 - Drain | 11 - Entrance |
| 06 - Balcony | 12 - Exit |

Structural Intent
The original building featured many beautiful Victorian-style elements that I aimed to carry forward in my design. I chose to create a Victorian-inspired botanical garden that celebrates the presence of plants, lichen, and water. The space immerses its users in living nature, a sanctuary for worship, connection, and authentic self-expression.

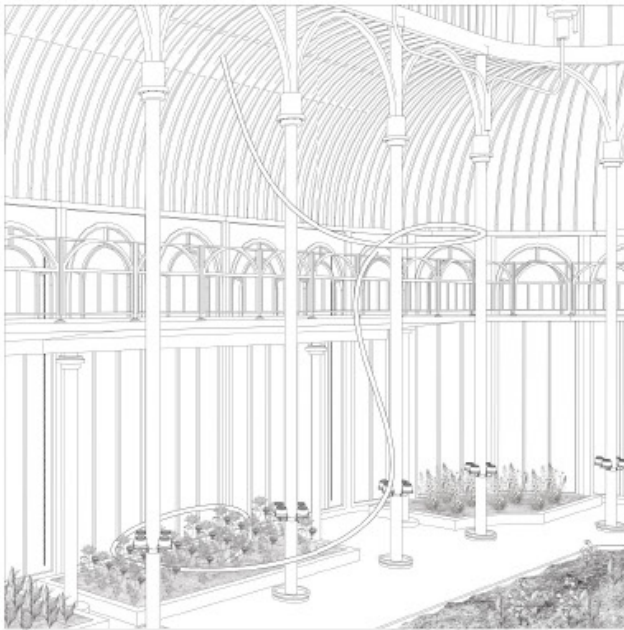


Rainfall Direction and Preciseness

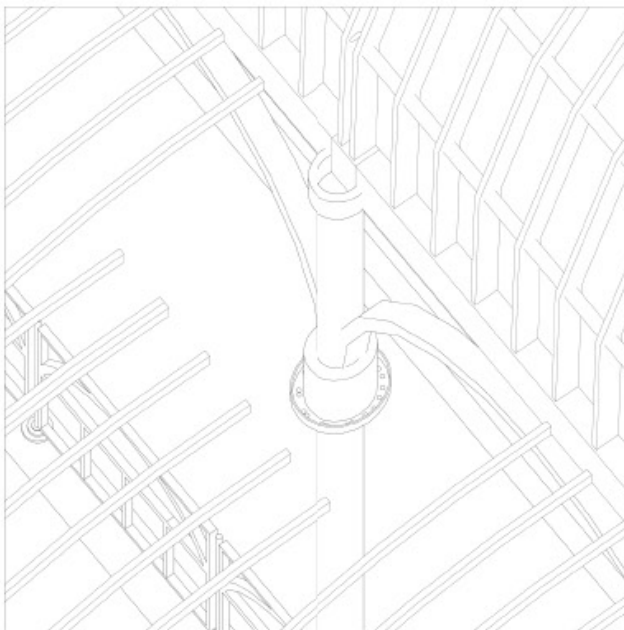
In my Botanical Garden, I've strategically created four key water collection and distribution points to capture and utilize rainfall. These entry points vary in the amount of water they channel into specific areas of the building. This design not only irrigates the crops but also introduces essential moisture into the environment, fostering ideal conditions for lichen growth and supporting a sustainable, self-nourishing ecosystem within the garden.



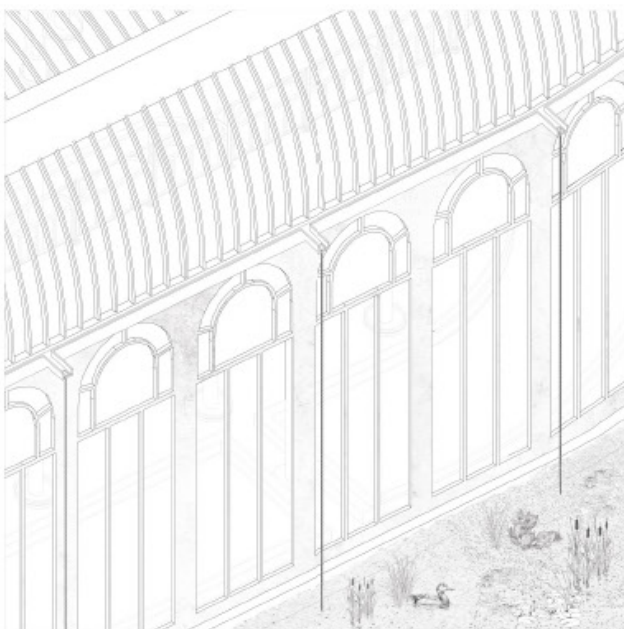
75% Rain collection
This method collects the greatest amount of water, which is essential for supporting the most water-intensive planters. The cupping catch system encircles the entire building, ensuring that any rainfall not captured by the other two systems is collected here. Strategically placed openings within the drain channel water into the internal Spiral Drains.



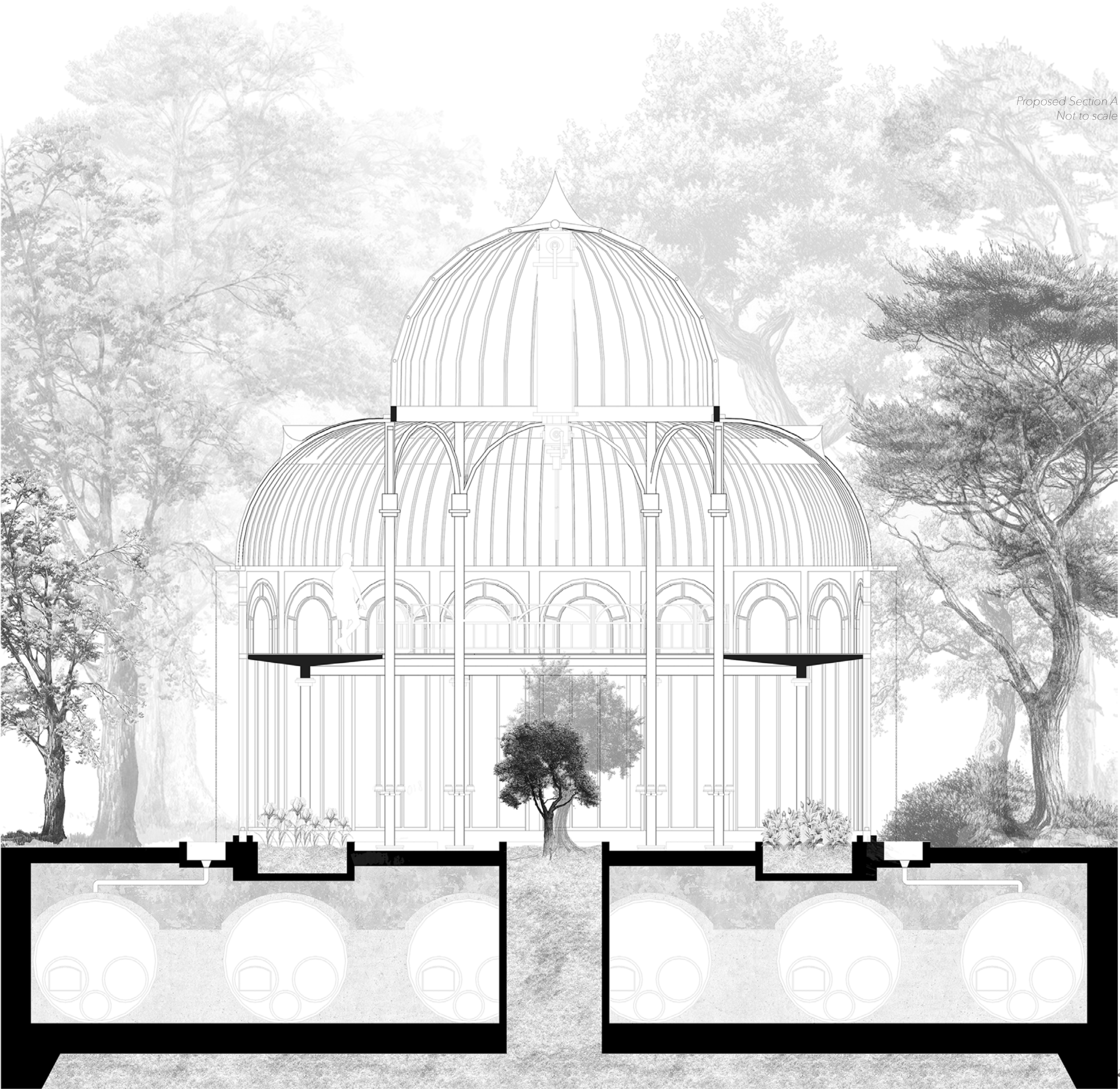
Spiral Drains
Water collects at the openings and cascades down the open spiral drains, forming a striking water feature accompanied by soothing natural sounds. As the drains pass over the planters, the water is gently dispersed through small holes at their base, ensuring even distribution.



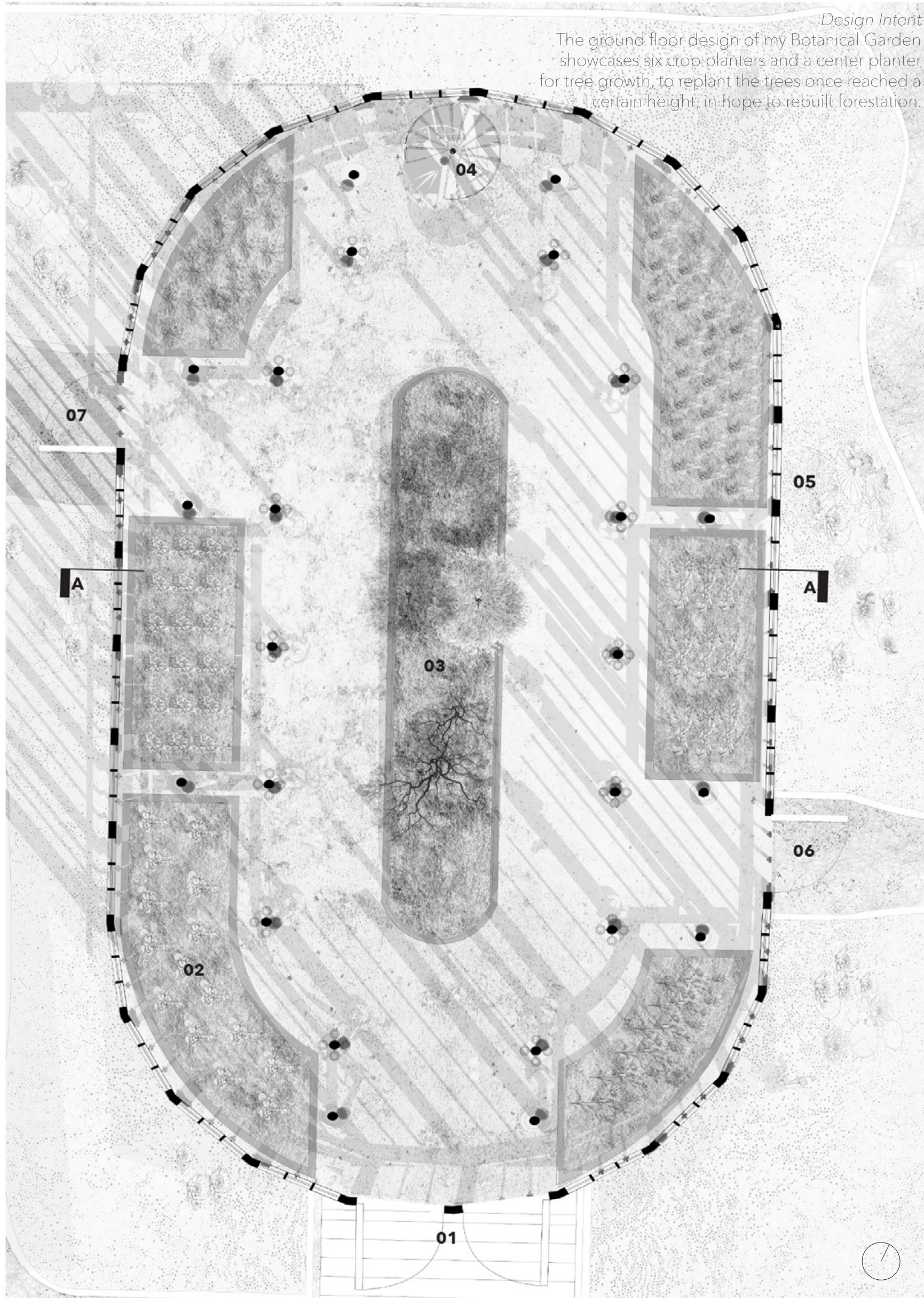
Pillar Gutters
Small gutter openings atop each structural pillar collect limited rainfall, allowing water to trickle slowly down the posts to support lichen growth. Tiny holes at the base of each catchment cup regulate the flow, ensuring a gentle release even during heavy rain, promoting a calm, natural interaction with the environment.



7% Rain collection
Water that escapes the primary openings or overflows the building's edges is captured by external rain chains. It travels around the structure until reaching a chain drain, where it cascades down as a water feature. The water is then collected in a surrounding moat, which connects to basement boilers for storage.



Proposed Section A
Not to scale



Design Intent
The ground floor design of my Botanical Garden showcases six crop planters and a center planter for tree growth, to replant the trees once reached a certain height, in hope to rebuild forestation.

Area of Focus
Botanical Garden
Ground Floor Plan
Scale 1:100

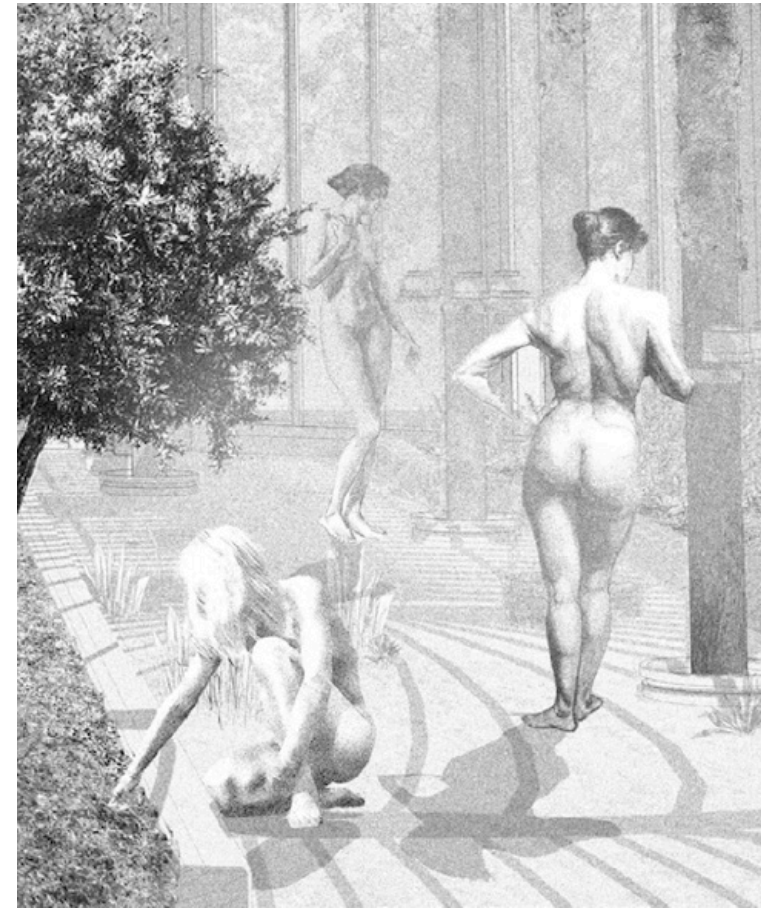
Key :
01 - Entrance
02 - Crop Planters
03 - Tree Planters
04 - Stairs to balcony/to basement
05 - External ponds connecting to Boilers
06 - Exit 1
07 - Exit 2

Figure 1
Lichen Pots



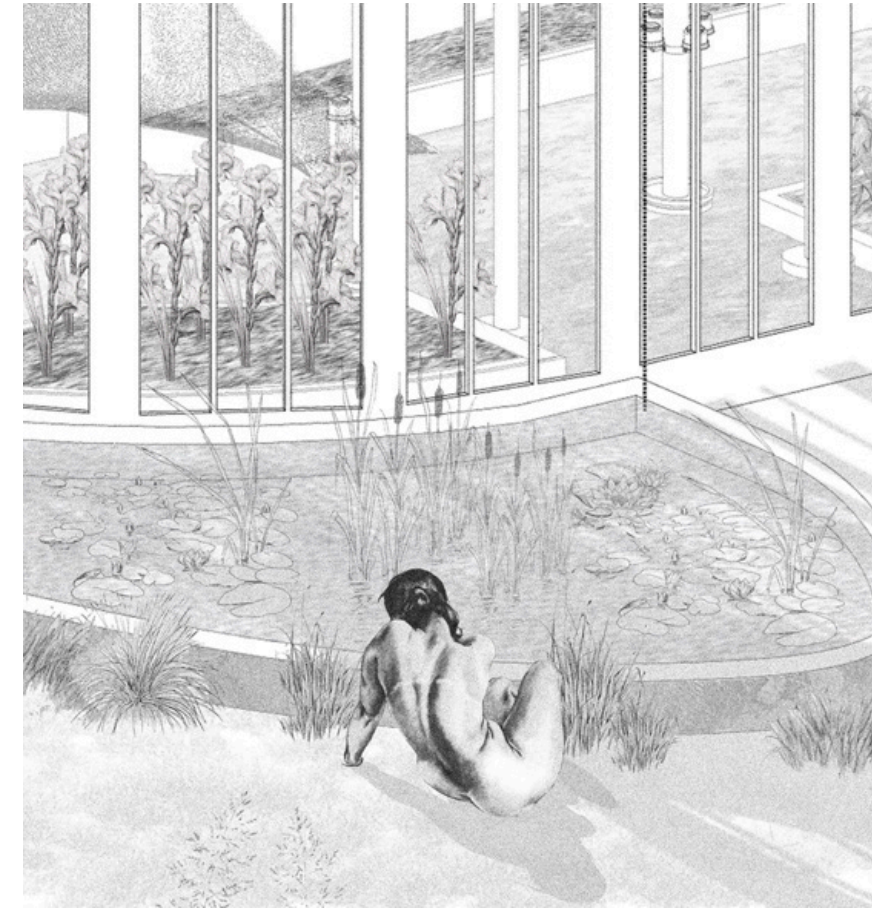
Human Behavior

The nudity of my users reflects the pure tranquility of the space and the idea of stripping human back to their most natural selves.



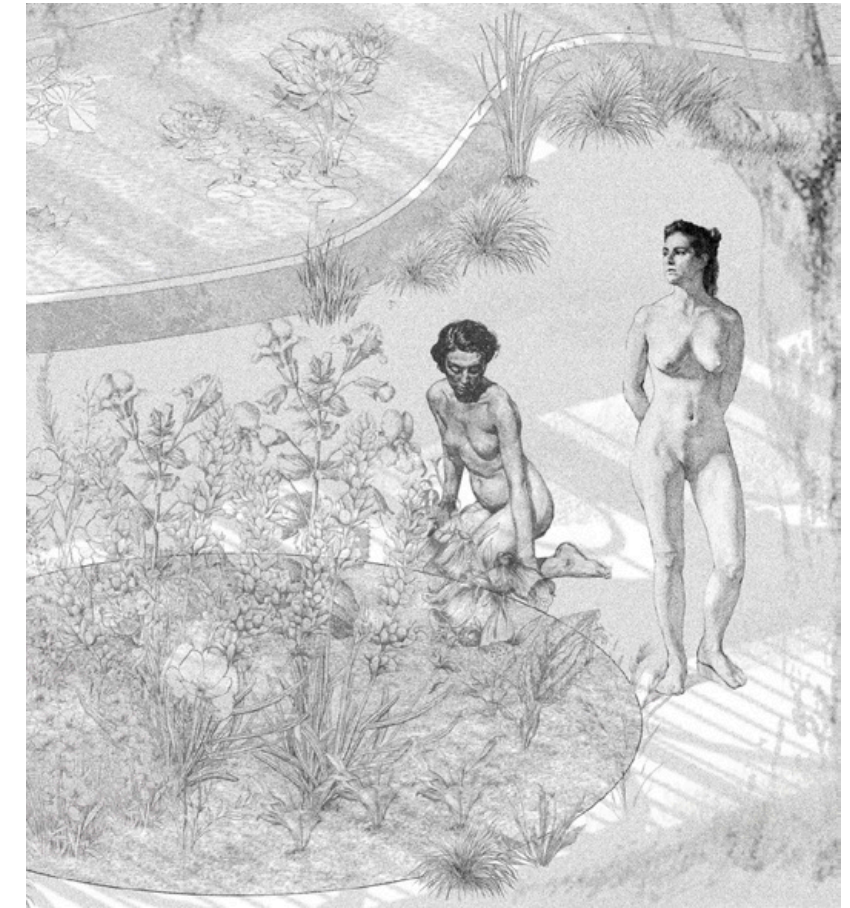
Lichen Picking

As the architectural design channels water into the building, lichen will naturally grow across its surfaces. The Cult will harvest the lichen by carefully scraping it from the structures and storing it in purpose-designed Lichen Pots (Figure 1) until it is ready to be processed into food or medicine.



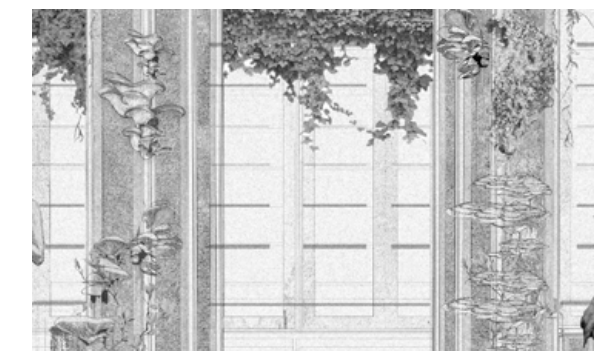
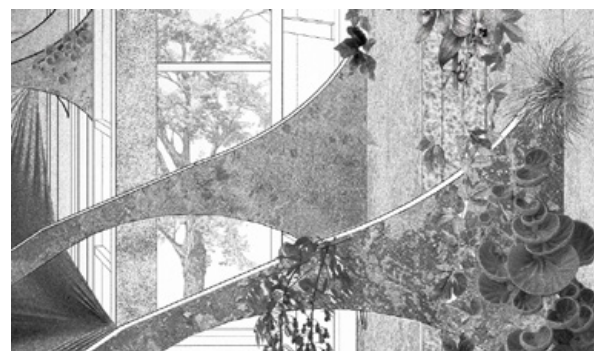
External Water Collecting

Any rainwater not captured by the Rainfall Direction Designs will accumulate in the external ponds, creating habitats that support life and providing the Cult with a natural source of water for drinking and bathing.



Gardening

Engaging with nature through gardening and cultivation has been shown to support positive mental health and healing practices. In a world defined by destruction, the Cult nurtures their well-being by immersing themselves in nature, finding purpose, restoration, and a path to healing.



Lichen Growth

This design embraces and enhances an overgrown state, encouraging diverse lichen and fungi to thrive on various surfaces based on water and sunlight. The purpose is to immerse the Cult in nature, allowing them to blend seamlessly into their surroundings, creating both a symbiotic environment and a natural camouflage for spiritual and physical concealment.

