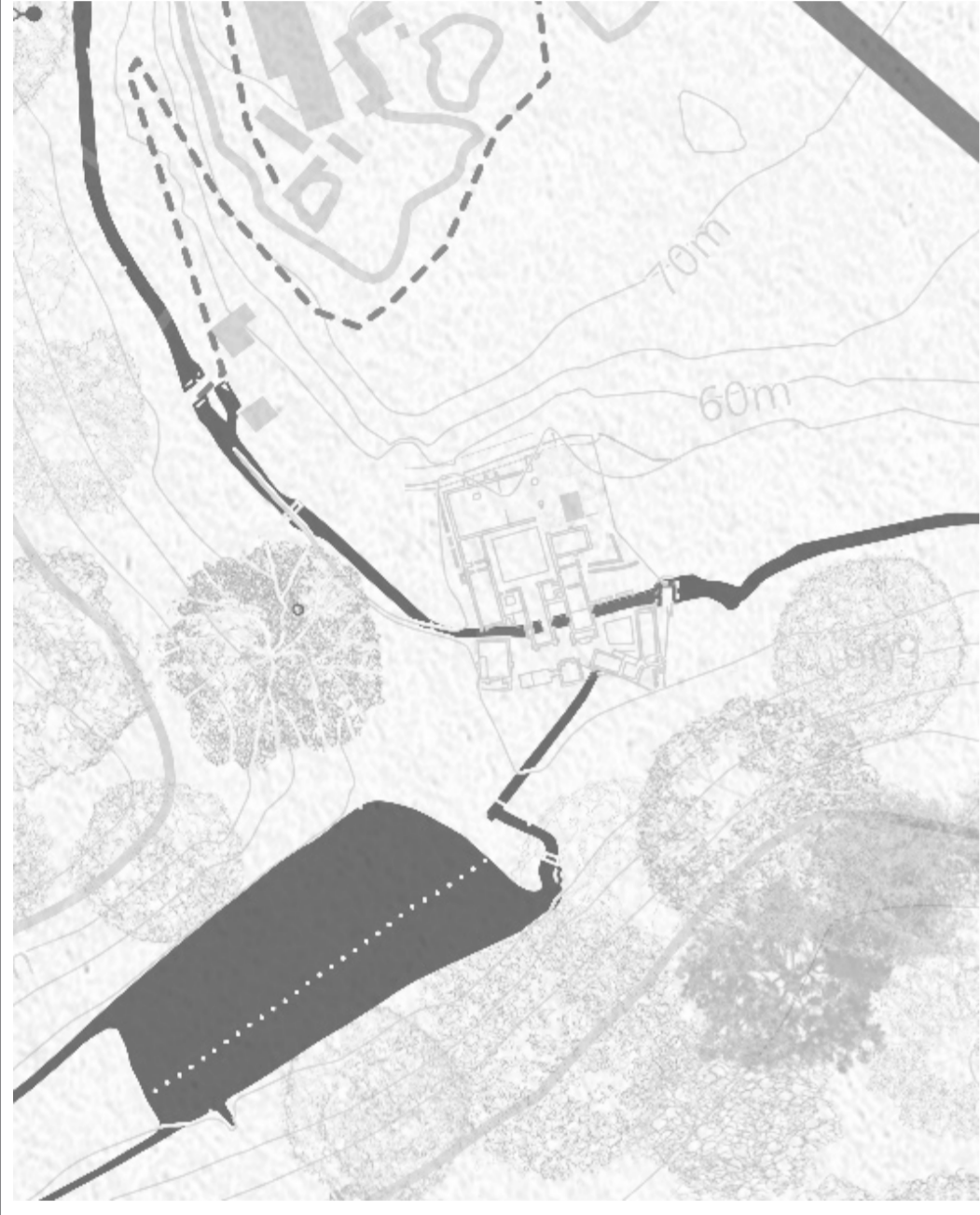


PAPER VOICES

PROJECT AIMS:

The intention of this project is to create a form of communication based rehabilitation amongst two individuals similarly to the principles of the rotary telephone and a letter. Influenced by the mechanisms within the rotary telephone, linear buildings within the site will transition the individuals from making the paper for the letter, writing the letter individually and then exchanging this at the end. The aim is to encourage individuals to talk about their emotions in a world where masking them with medication is a normality. Weaving in various physical divisions helps the individuals to adapt from being alone to being around others. The functions of each building are orientated around the sun path with the natural current of the water carrying the paper pulp through the different stages



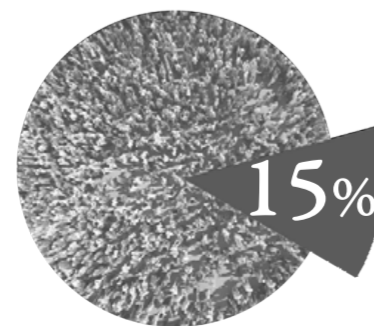
SITE SUN PATH

Sites sun path which I used to inform the placement of the processes. As the space is intending to reject technology and electricity, using this method will allow for light to enter the space only when needed, creating a natural time limit on each function

2084 COUNTER CULTURE

PROJECT SETTING:

Set in 2084, AI has taken a hold over individuals within the world following mass environmental disasters causing people to flee their homes. Overcrowding has led to people living their lives in the 'New World', within the metaverse. Resultantly individuals become physically isolated from others unable to communicate in the physical world. This results in pill addiction in order to artificially boost peoples happiness



2076 - 15% of the UK population is struggling with over stimulation and addiction to the mood altering medication



2074 - Over 32% of the worlds population becoming reliant on positive mood stimulating drugs



COLLAGE OF EXISTING SITE CONDITION



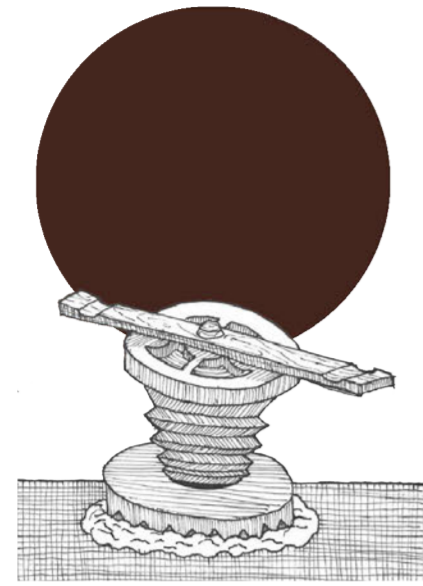
INDIVIDUAL PROCESSES UNDERTAKEN AT THE SITE

These key activities aim to encourage the two individuals on site to work together and reflect. These processes will be influenced by the highlighted mechanisms from the rotary telephone



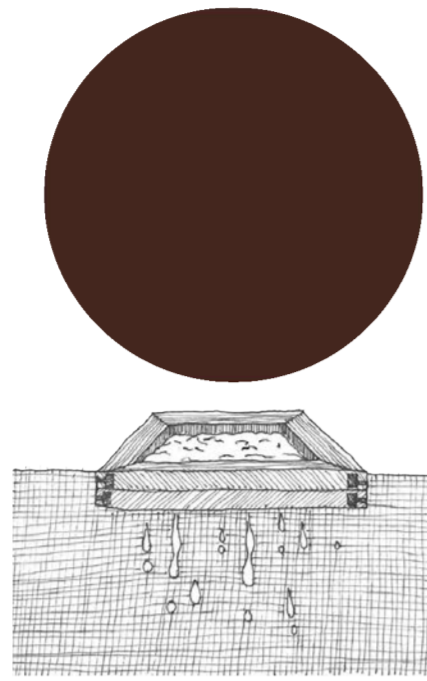
TEARING OF THE PAPER

Initial stage following the collection of the paper



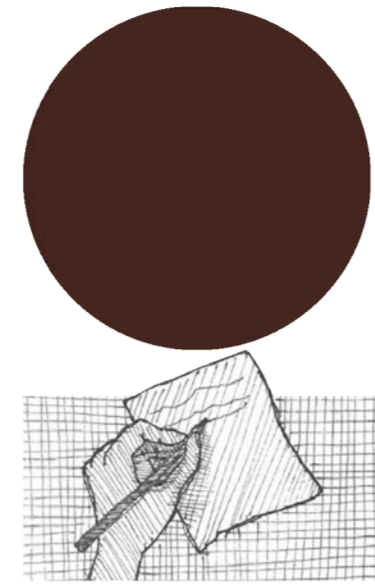
PULPING OF THE PAPER

Following the soaking period, the paper will need to be ground down into pulp



SIFTING OF THE PAPER

Pulp will need to be sifted from the water and dried within the day



WRITING THE LETTER

Expressing and reflecting of emotions

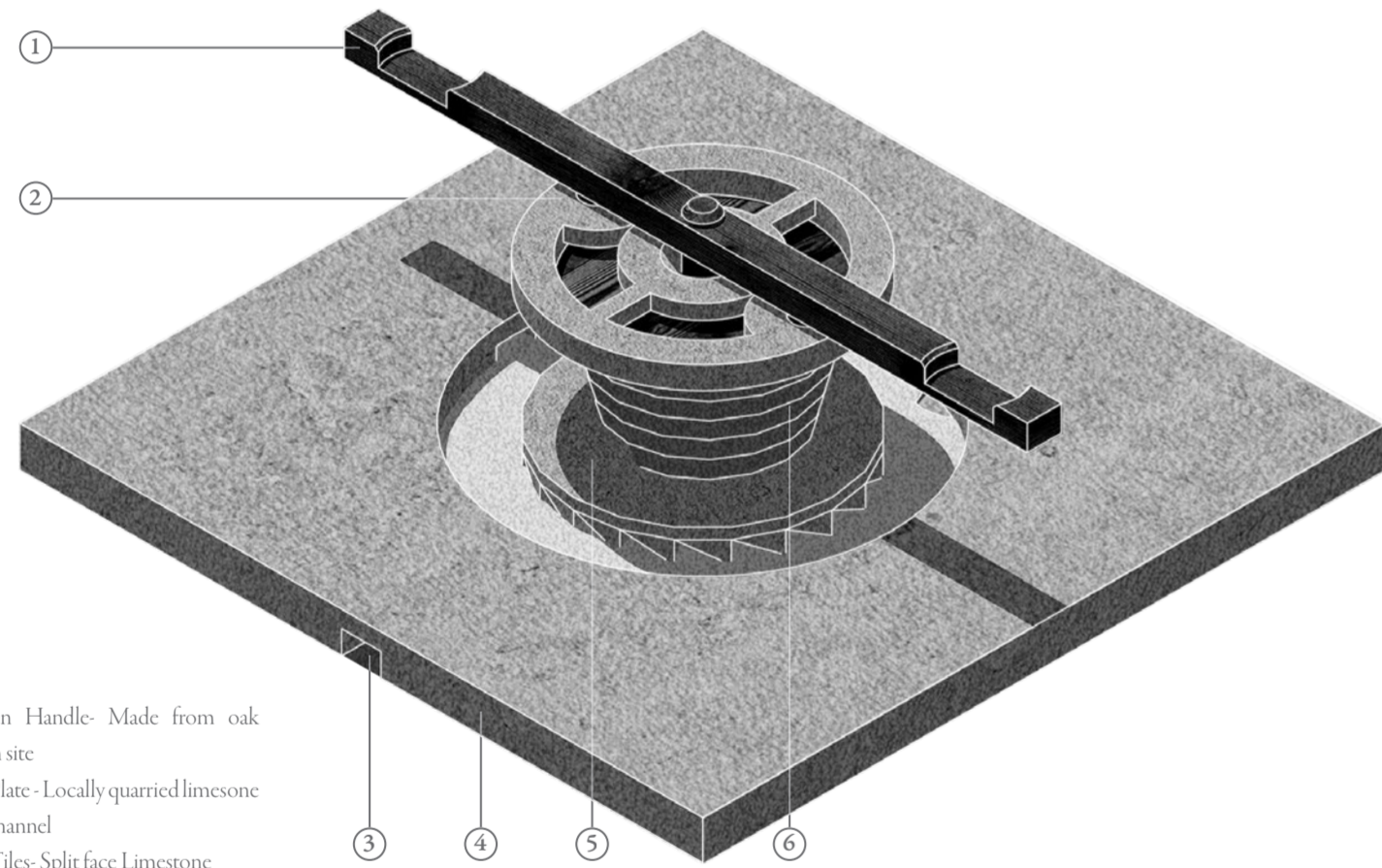


LETTER EXCHANGE

Letters exchanged before the relic, symbolising the importance of communication

PULPING WHEEL PROCESS DECONSTRUCTION

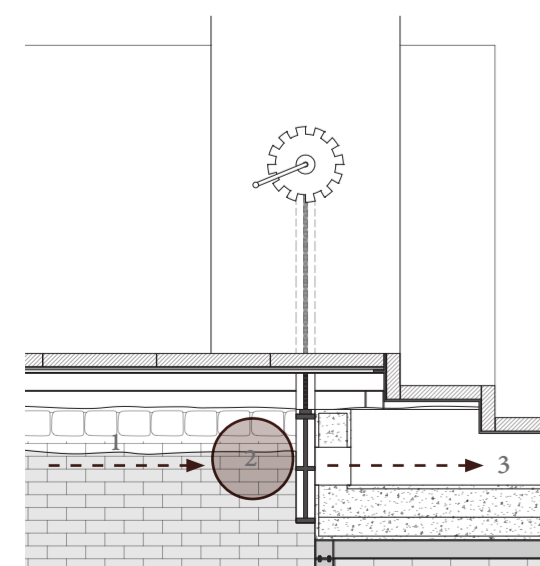
Key element of the design in order to create the paper. Working together the two individuals will use the natural current of the water to allow for the scrap paper to enter the space and be ground down. This is the first contact point of the individuals with the intention of beginning physical communication between the two



KEY:

- 1. Wooden Handle- Made from oak trees on site
- 2. Stone Plate - Locally quarried limestone
- 3. Pulp Channel
- 4. Stone Tiles- Split face Limestone
- 5. Stone Grinder
- 6. Rotary Shaft

PULPING WHEEL | ISOMETRIC VIEW



SYSTEM STEPS

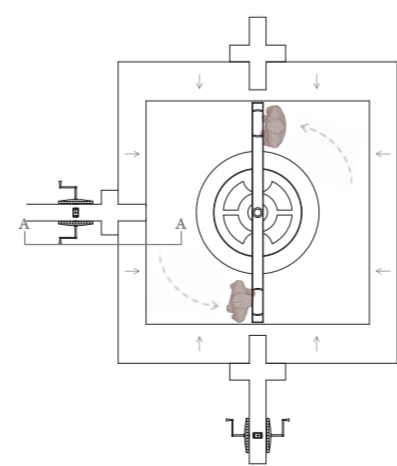
- 1. Paper is sent from the tearing space to the pulping area
- 2. Paper sits at the top of the water overnight to soak
- 3. Paper is released into the pulping space and ground down

Same process starts from the pulping space to the sifting space, carrying the pulp



SEPARATION EXPLORATION

Distance| Public 3.6 meters furthest away
As the individuals come from an introverted society and may be meeting each other for the first time, the space experiments with social distance. This slowly makes the two individuals closer until the exchange space

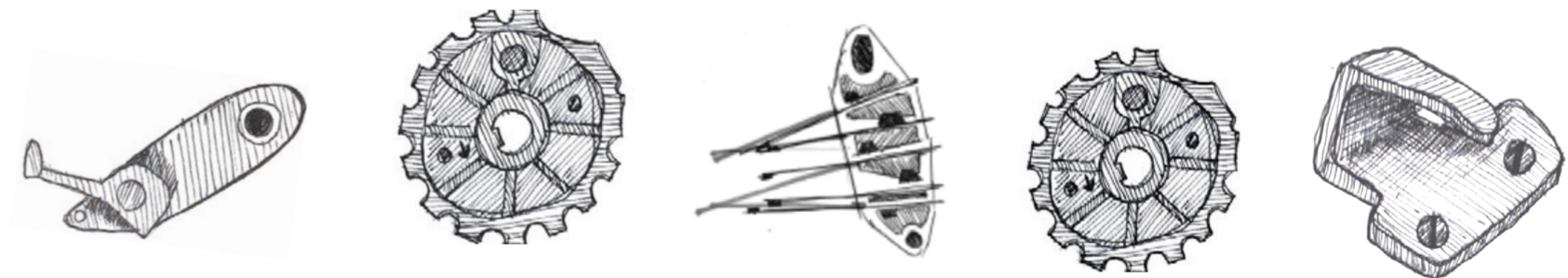


FUNCTION KEY:

- 1. Tearing Space
- 2. Accommodation
- 3. Workshop- Pulping Space
- 4. Workshop- Sifting Space
- 5. Meditation- Writing Space
- 6. Tomb- Exchange Space

SITE PLAN

Plan displaying the linear numeric layout of the site. These spaces are used for each step of the paper making process

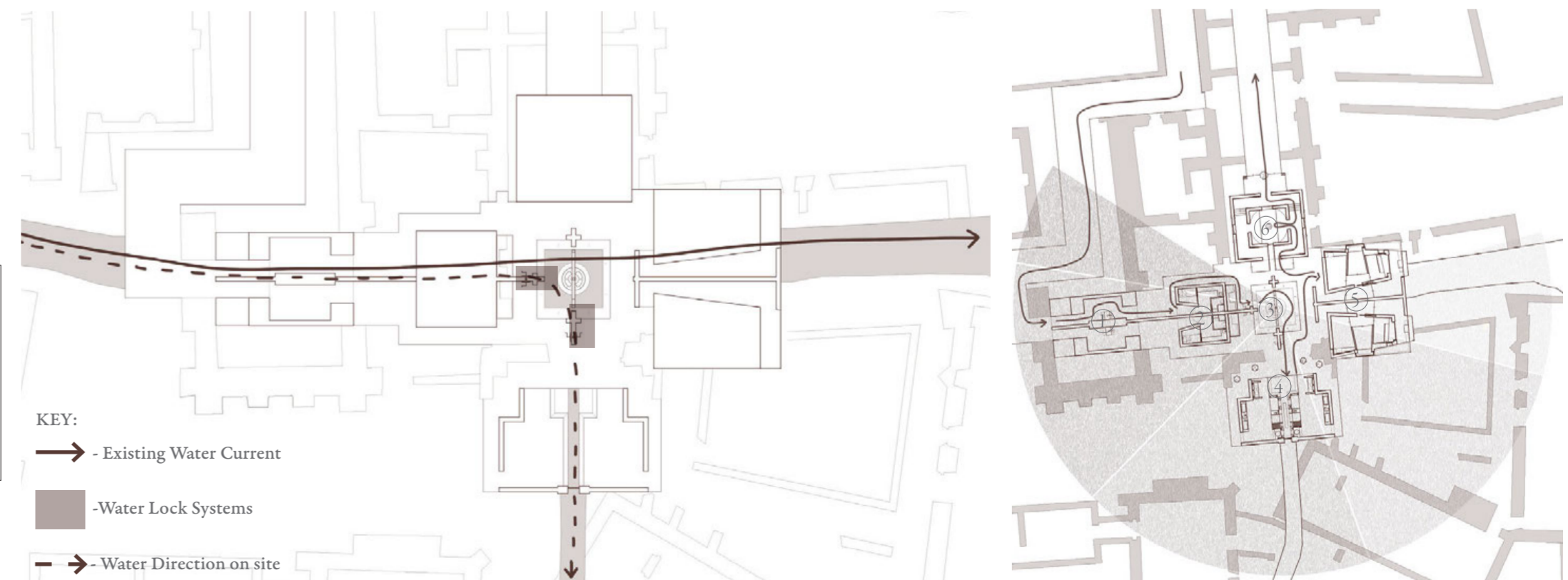


INSPIRED MECHANISM

Components within the dial mechanism which inspired the building where the paper making takes space

WATER FLOW CURRENT

Placing the site above the existing current allows for the water to naturally carry the paper through the processes with a water lock system in place to control when it enters specific areas



KEY:

- Existing Water Current
- Water Lock Systems
- Water Direction on site

PAPERMAKING PROCESS

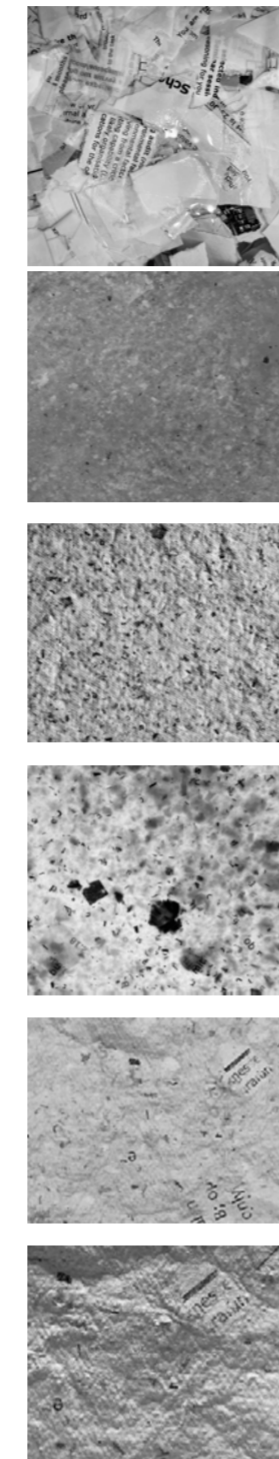
Images of making paper through the waste of old paper. This is in aim of understanding the papers various forms, equipment needed and texture. This was then used to inform my spacial requirements of each space, and how the materials could transform into materials on site



VIDEO LINK TO THE MAKING PROCESS



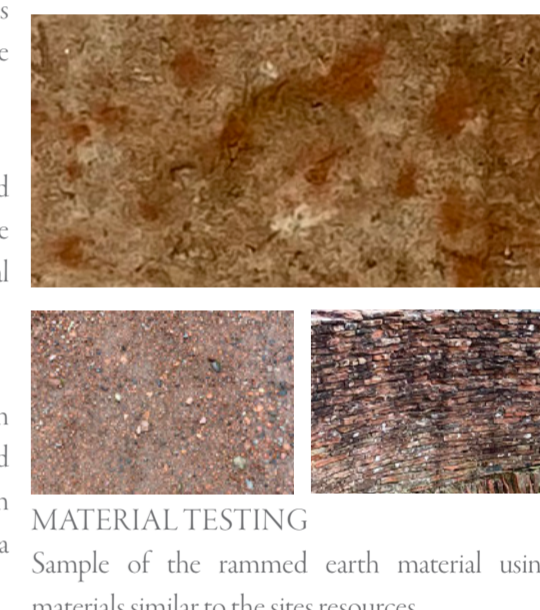
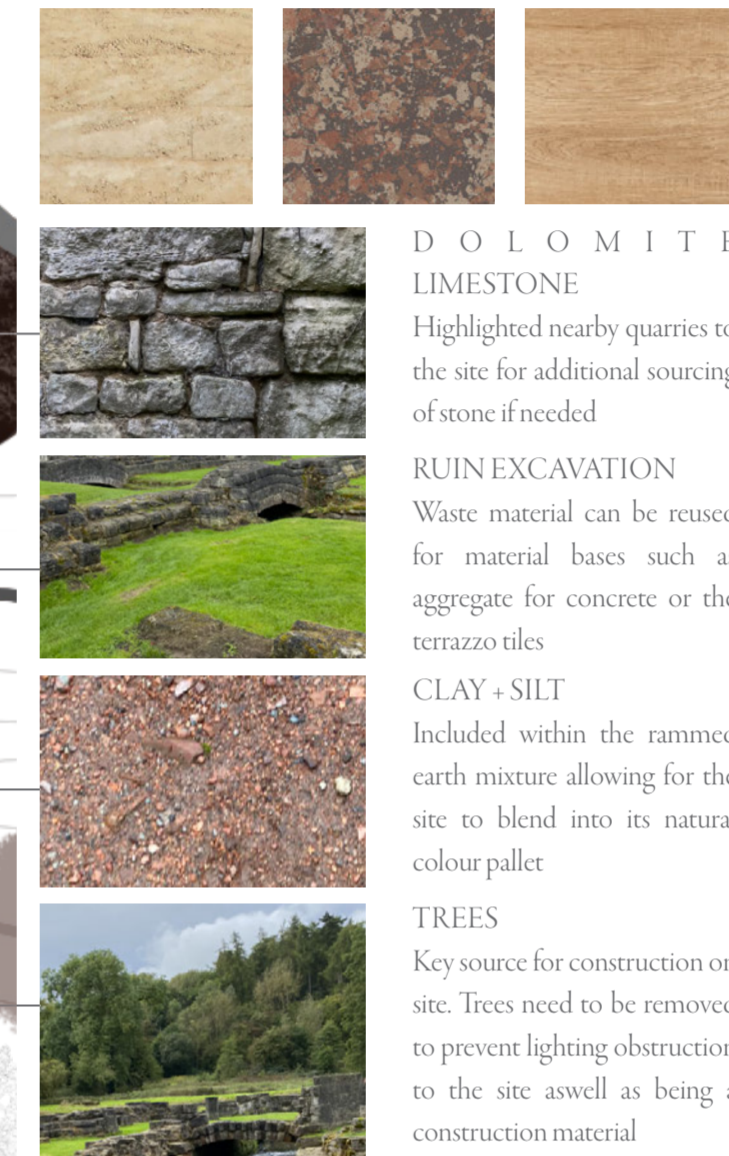
TEXTURAL EXTRACTION



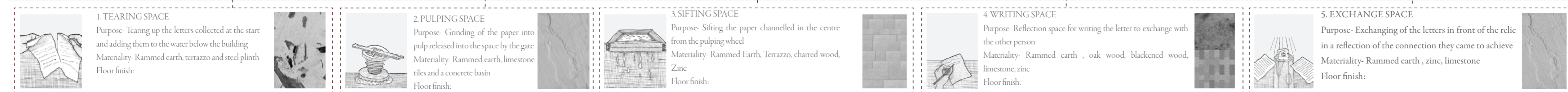
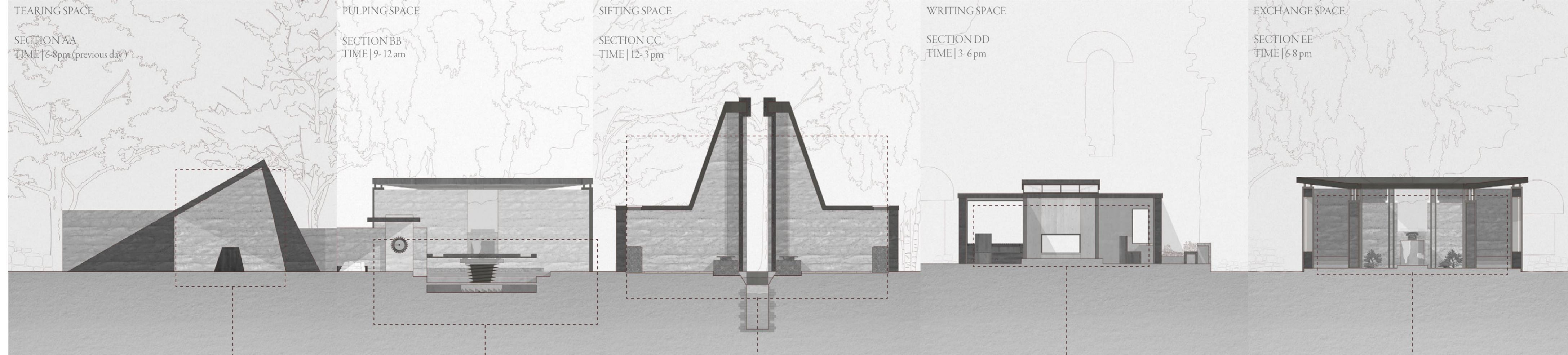
MATERIAL EXTRACTION

In aims of improving sustainability and blending the construction to the reset of the site, studies of the sites potential for materials was undertaken. Natural materials on site are available to create rammed earth, terrazzo and wood

Intended materials for extraction on site:



SPACIAL SECTION + MATERIALITY

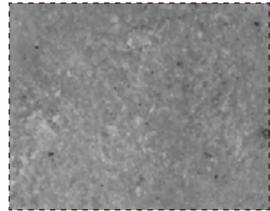


AREA OF FOCUS DESIGNS

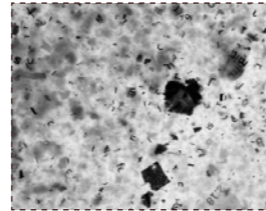
Application of these concepts within one specific area



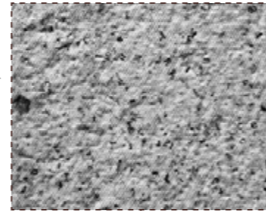
SEPARATION EXPLORATION
Distance | Social distance
1.5 meters away from each other



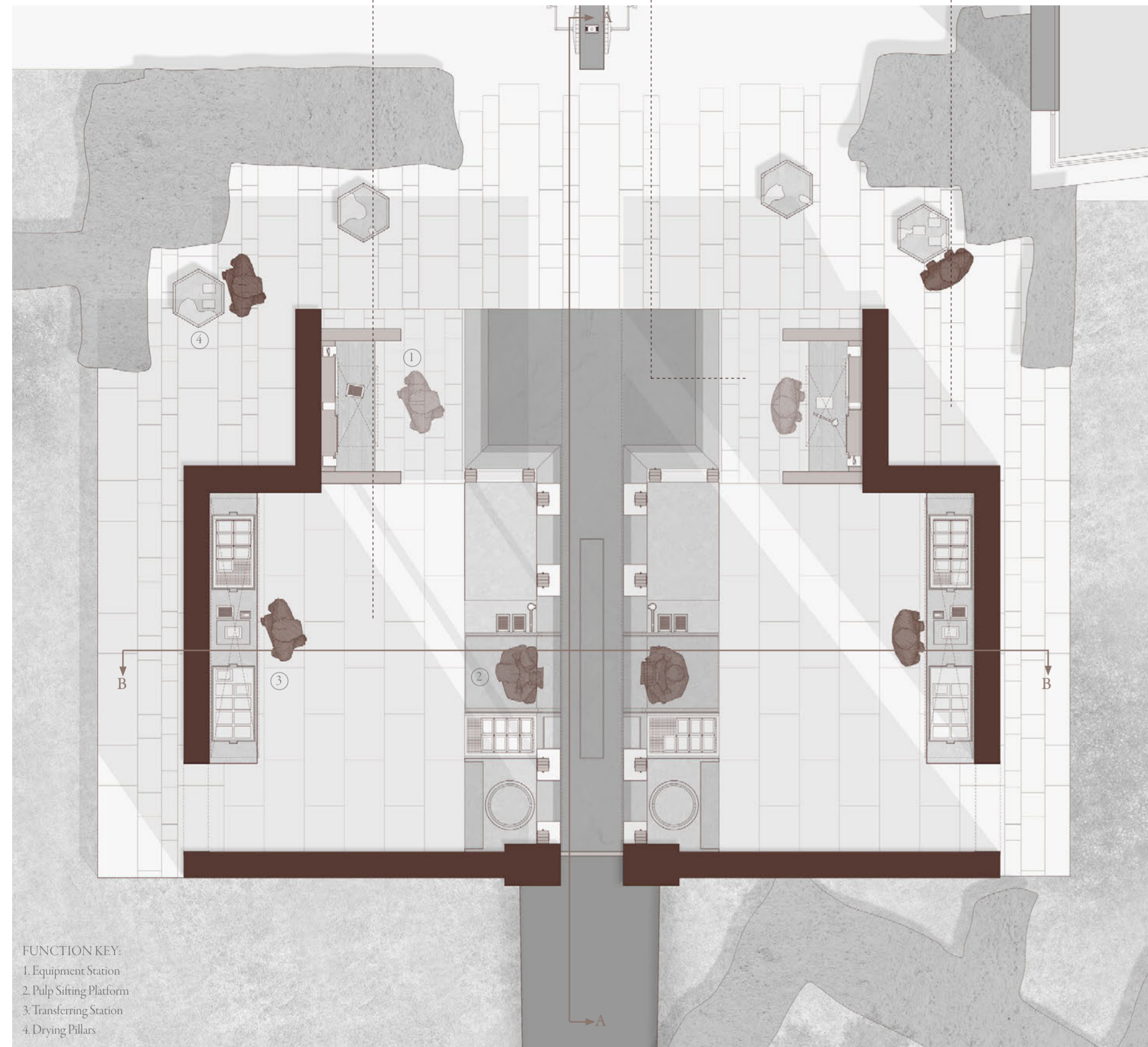
STAGE ONE | Three forms of alternating tiles, following the water route, representing the small fragments of pulp



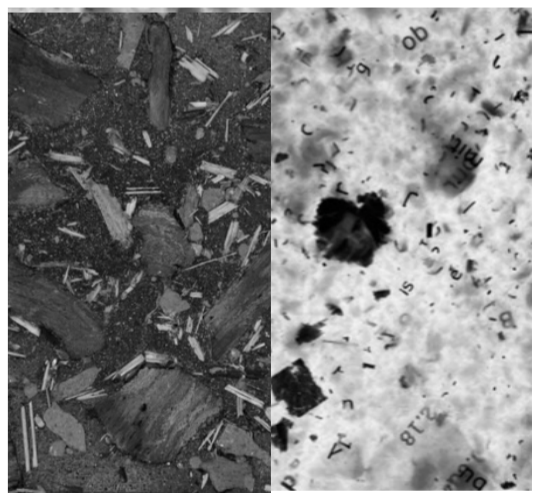
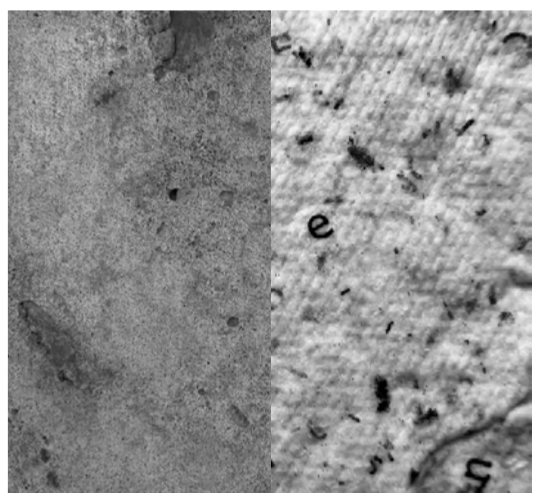
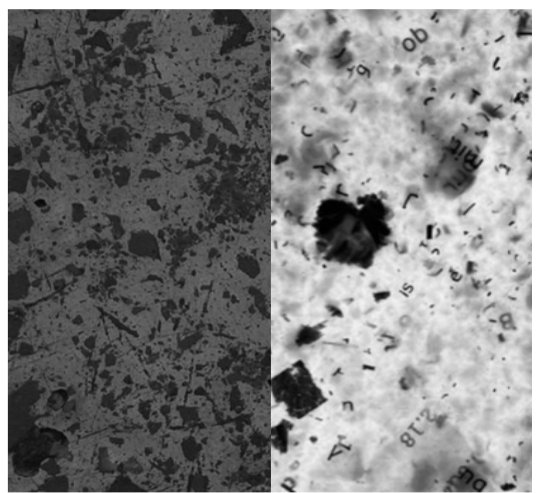
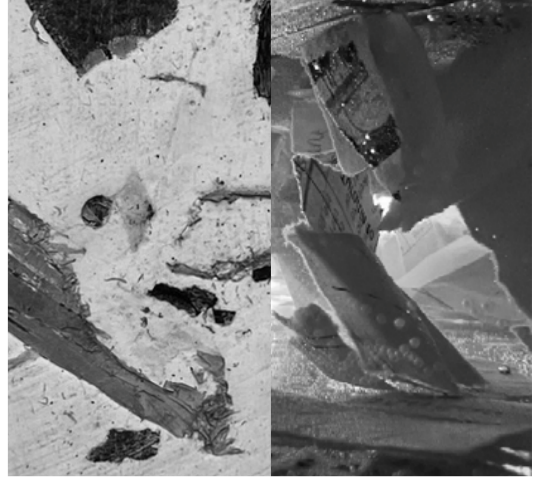
STAGE TWO | Two rows of tile patterns laid vertically representing the beginning of the paper being made



STAGE THREE | Singular formation of tiles representing the unity of the new paper made



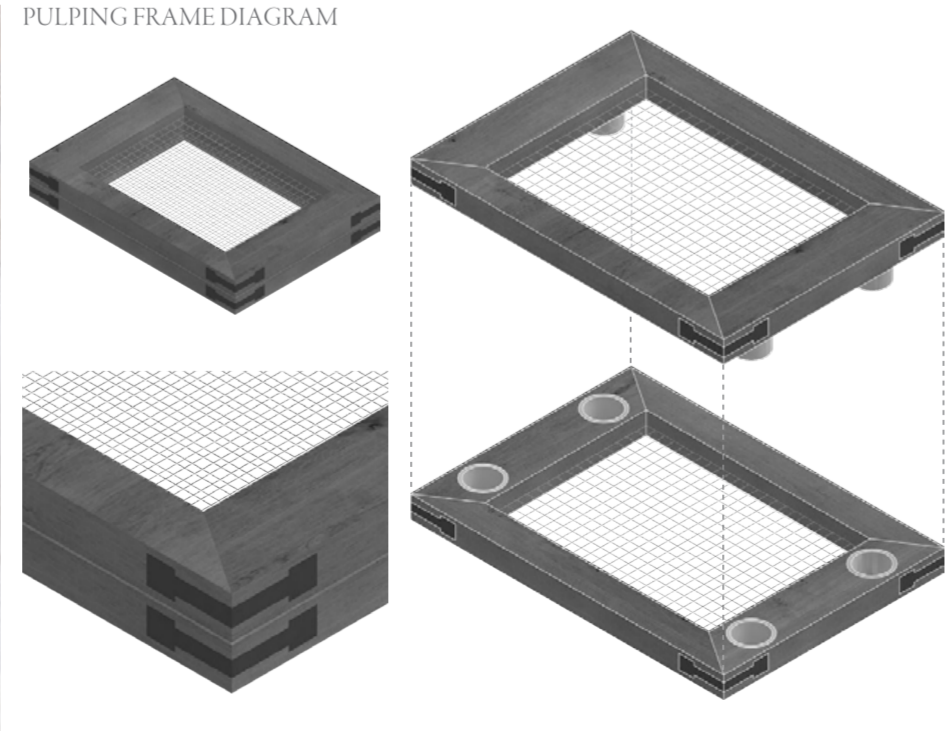
FUNCTION KEY:
1. Equipment Station
2. Pulp Sifting Platform
3. Transferring Station
4. Drying Pillars



PRIMARY RESEARCH
Transformation of the paper process into terrazzo like materials using waste on site with a Jesmonite base



SIFTING SPACE VISUAL
Area of the sifting space displaying the application of materials through the concept of the paper making



FRAME + LADLE DESIGN
Additional consideration for the equipment used for the paper making process. This enhanced details within the tools they are using, helping to further immerse the individuals within the craft



IMAGES
Images of the paper making process during the straining of the paper and mixing

