

# The Enlightenment.

## *The Enlightenment*

In 2084, society has become heavily reliant on AI for all forms of communication leading to increased asociality and a lack of authenticity.

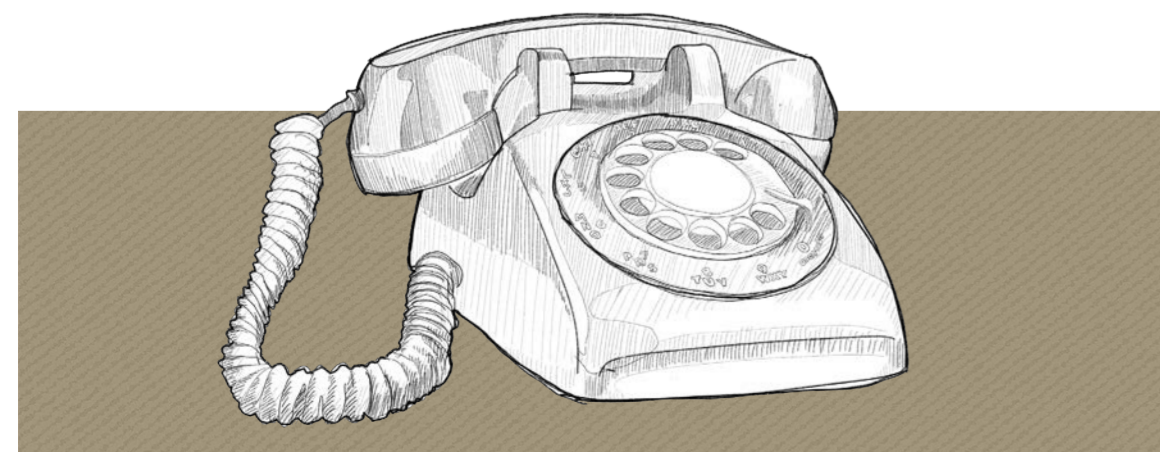
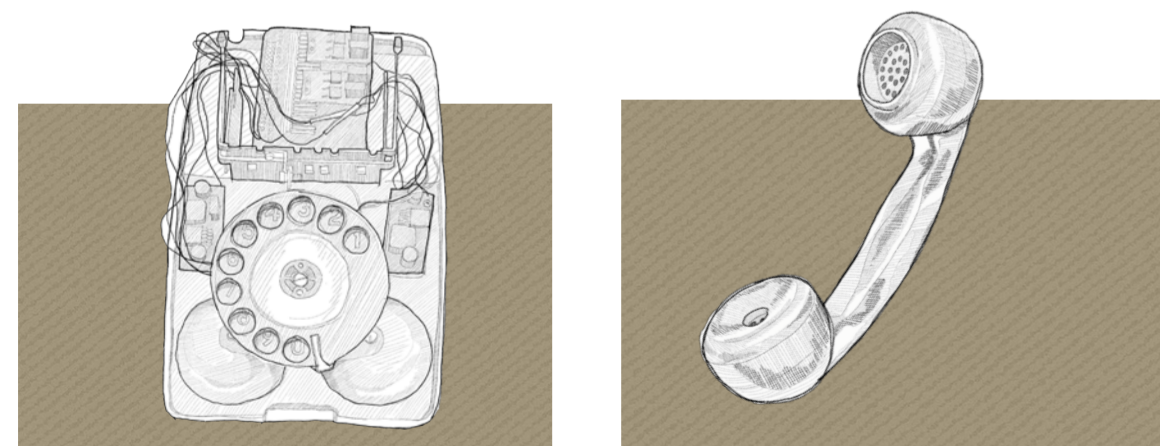
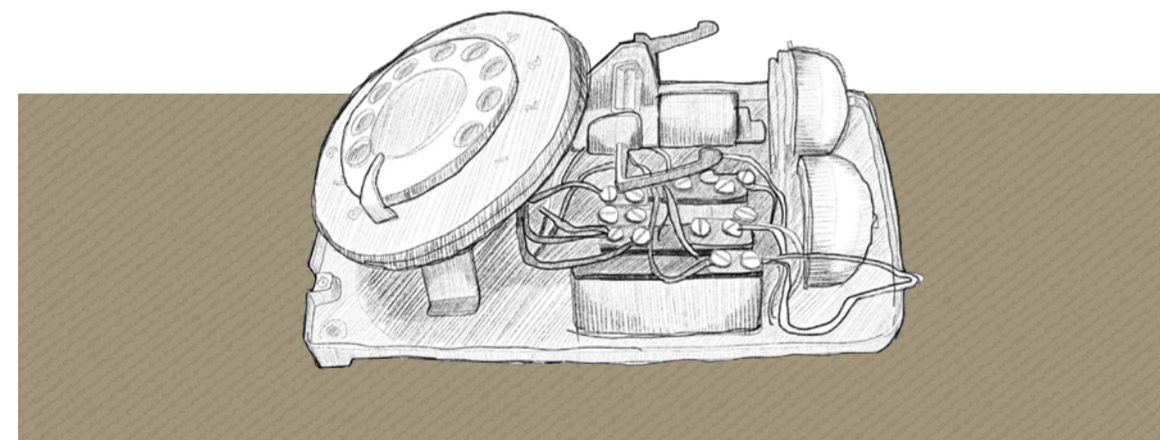
As jobs and lifestyles have become centred around technology development and production, it has formed a severe work-life imbalance, removing time out of work, and labelling social engagement unnecessary.

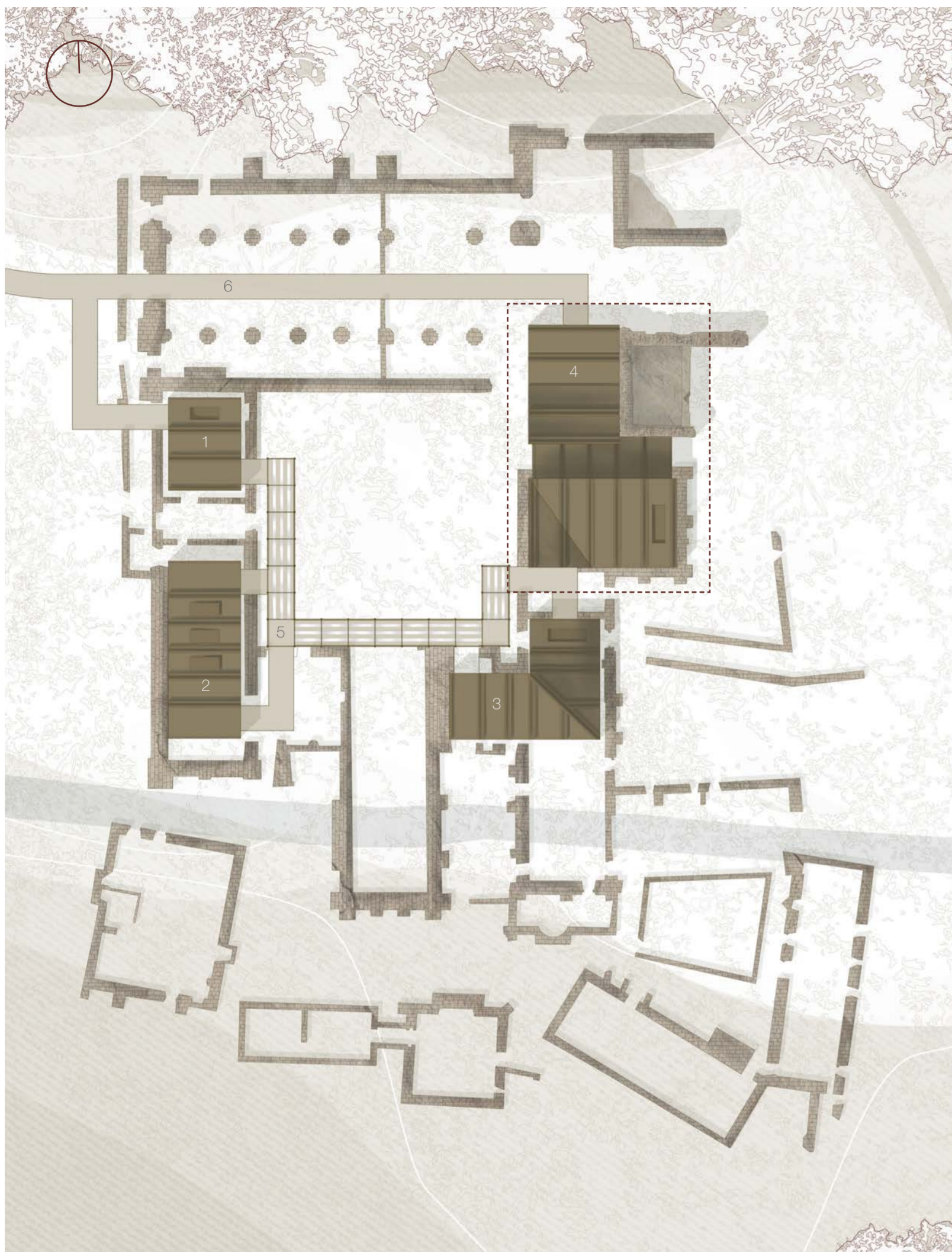
As the reliance on AI communication increased, the inability to form deep and meaningful connections has led to a widespread sense of loneliness and disconnection, a breakdown of relationships, and unachievable, suffocating lifestyles. As an escape, one morning an individual walking through the Roche Abbey ruins found the dial of an old rotary phone which sparked curiosity and inspired the 'Enlightenment' counter-culture as an attempt to bring society back to a state of communication used in past generations. The counter-culture will use the practice of making books to inspire new creativity and written communication skills in order to enable individuals to engage socially with each other once again.

## *Design Intent*

The re-purposing of Roche Abbey will create a design that will host the 'Enlightenment' counter-culture and become a meeting place for visitors to engage in with authentic communication skills. The design will take reference from the function of the relic that inspired the three core principles of the counter-culture and will help the visitors to 'connect and disconnect', find 'stability and order', and 'disrupt' the monoculture to 'communicate' with each other.

The design will be made up of four spaces; a workshop space to create egg tempera paints, the preservation space to allow visitors to learn from audio books on the rotary phone and scribe the new books, the reflection space for the pages to be painted and illuminated and lastly, the celebration space to bring everyone together when binding and displaying the books. Throughout the design, themes of transparency and illumination have been used to structurally represent the gaining of knowledge and authenticity as visitors pass through each space.





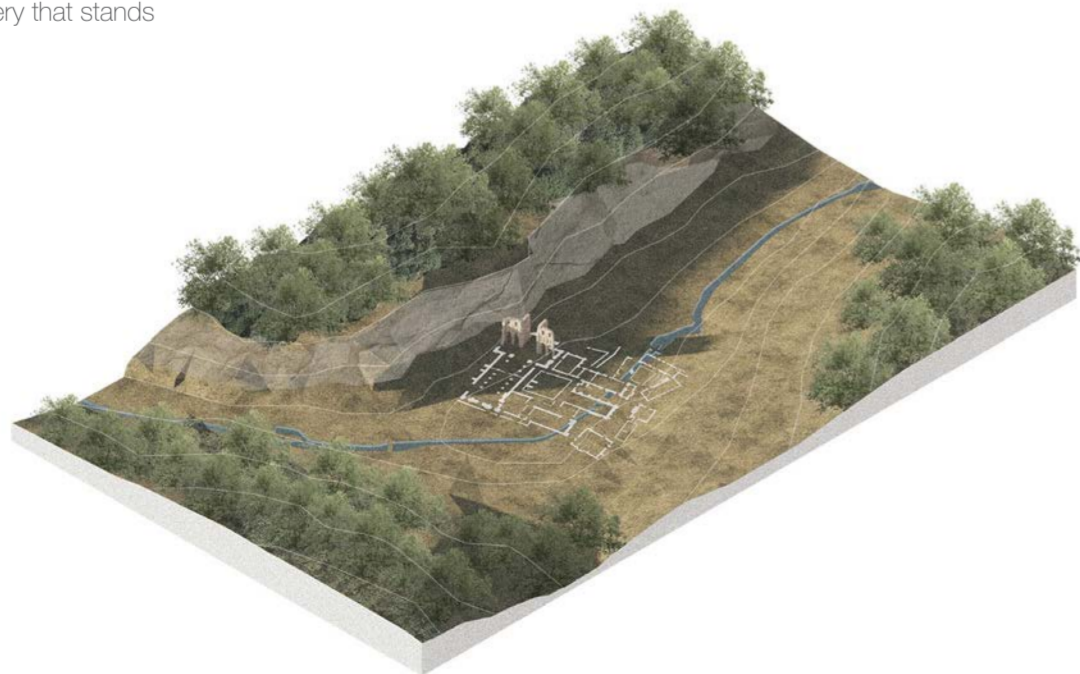
**The Location**

Situated within Rotherham, South Yorkshire, Roche Abbey is a 12th Century Cistercian Monastery that stands in a valley next to the Maltby Dike river.

**Roof Plan**

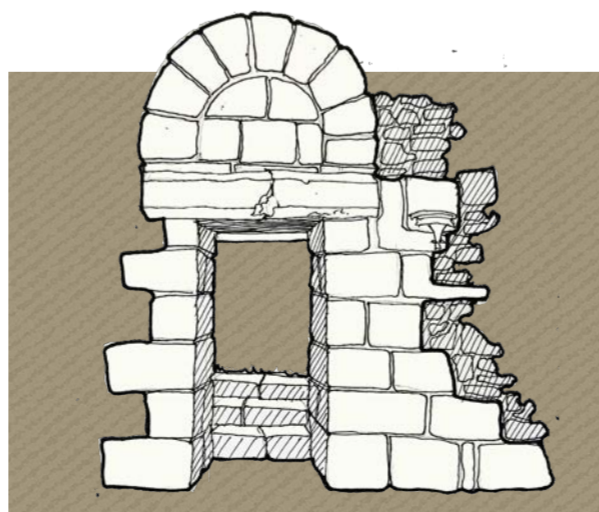
Scale 1:500

- Proposed Building
- Existing Building
- Area of Focus
- 1 Workshop Space
- 2 Preservation Space
- 3 Reflection Space
- 4 Celebration Space
- 5 Pergola
- 6 Walkway
- 7 Public Foot Path
- 8 Maltby Dike River

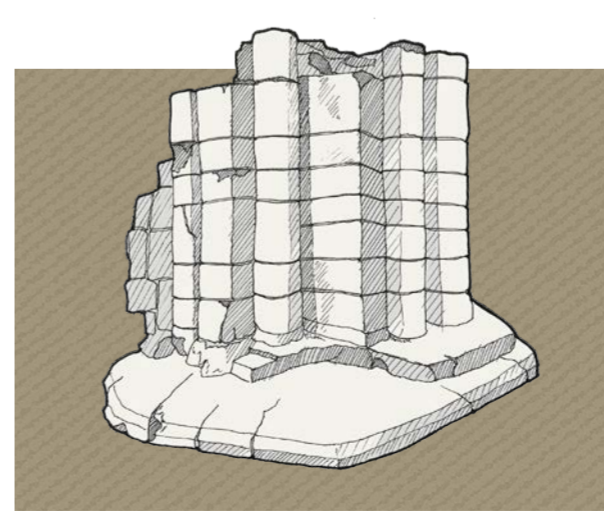


**The Remaining Chapel**

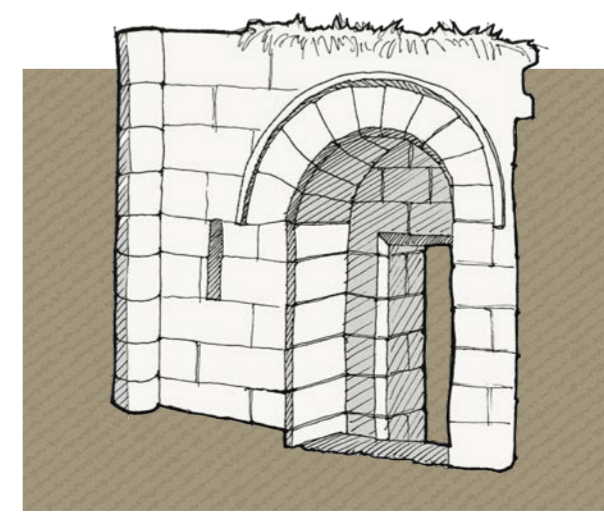
The North and South Chapel are the largest remaining part of the Roche Abbey site that also hold religious significance within the setting of the original cistercian monastery.



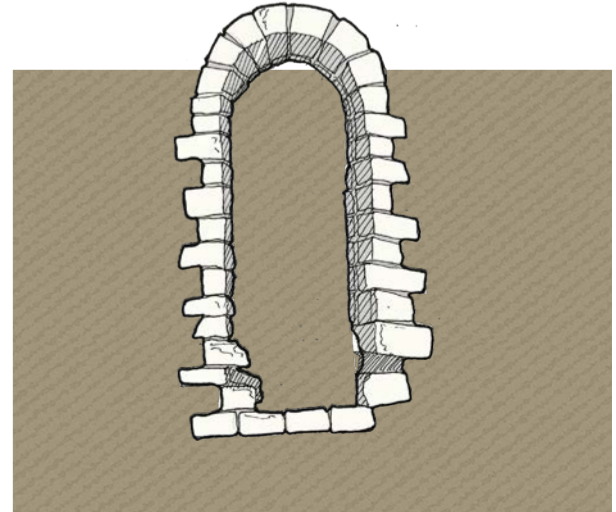
Doorway connected to South Chapel



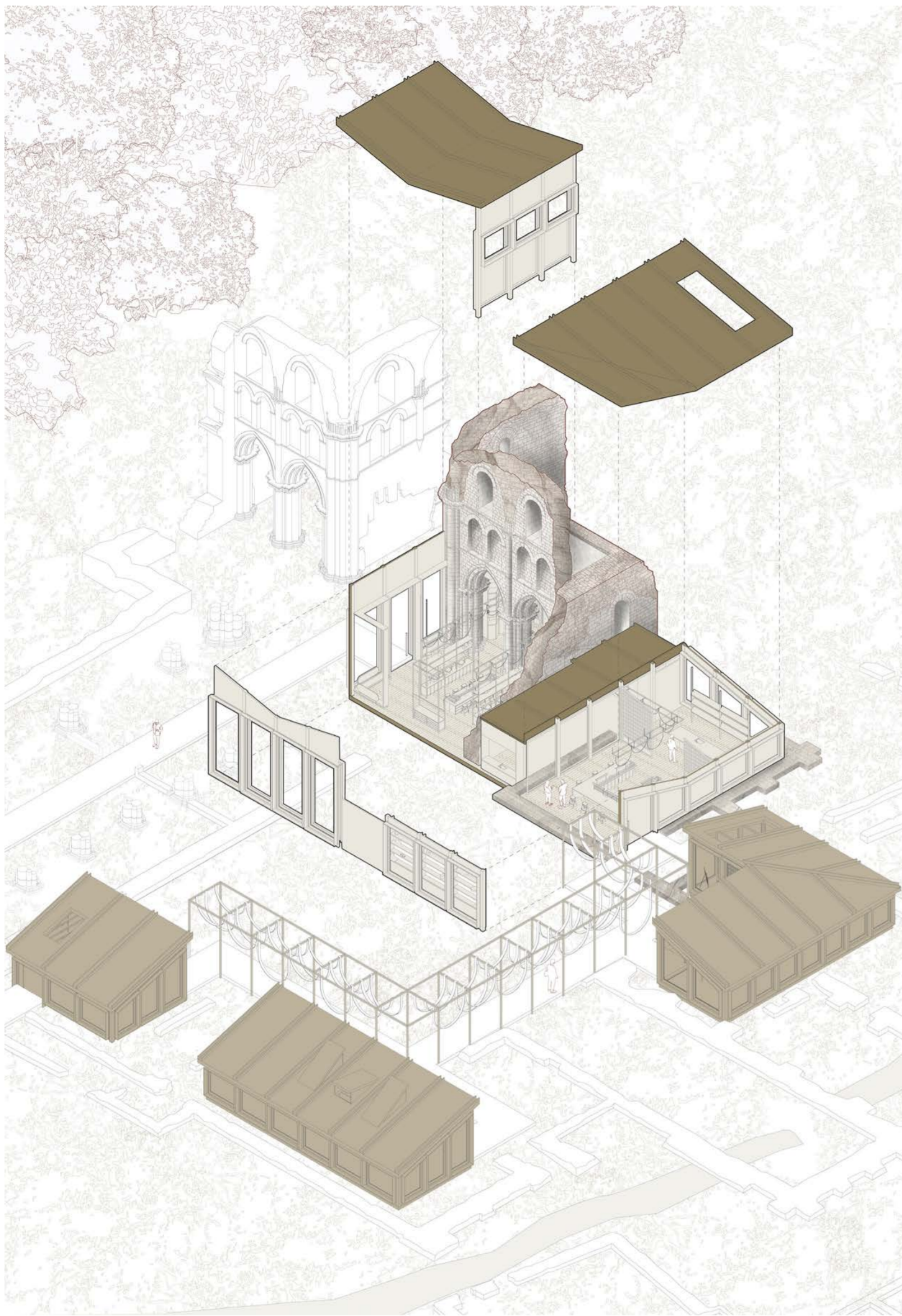
Column ruin within Chapel



Inside Doorway to South Chapel Wall



Window opening to Chapel

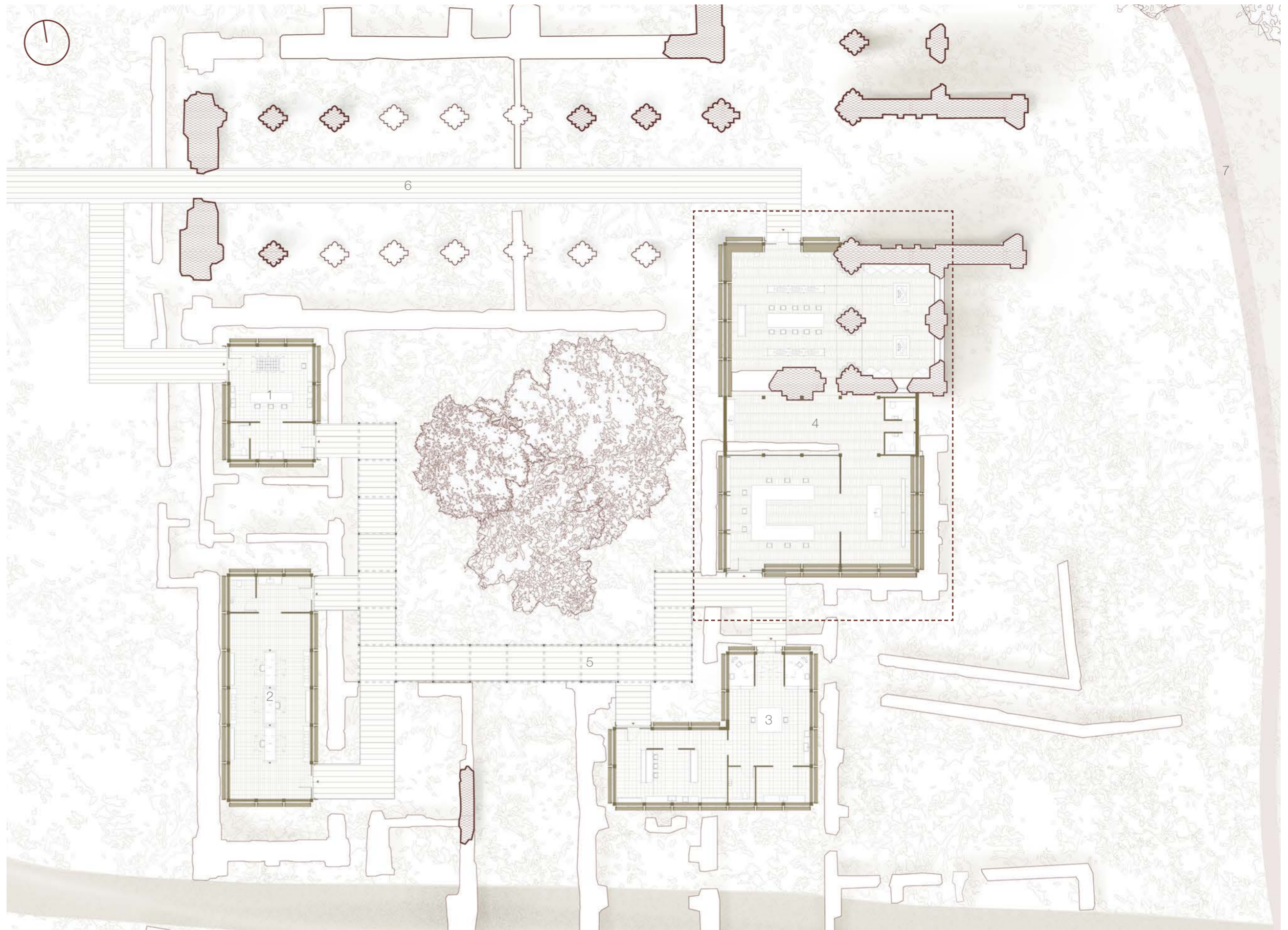


(Above)  
**Isometric**  
 Not to Scale



**The Pergola**

This looped pergola structure ties together all of the buildings and represents the sound waves of the counter-culture's three core principles. This design language can also be seen within the final area of focus space within a lighting feature.



(Top Right)  
**Master Plan**  
 Scale 1:300

|                                 |  |
|---------------------------------|--|
| Proposed Buildings              |  |
| Existing Building Above 1 Metre |  |
| Existing Building Below 1 Metre |  |
| Area of Focus                   |  |

|                   |          |                    |          |
|-------------------|----------|--------------------|----------|
| Pergola           | <b>5</b> | Workshop Space     | <b>1</b> |
| Walkway           | <b>6</b> | Preservation Space | <b>2</b> |
| Public Foot Path  | <b>7</b> | Reflection Space   | <b>3</b> |
| Maltby Dike River | <b>8</b> | Celebration Space  | <b>4</b> |



**Spatial Intent**

**1 Workshop**  
 This space will inspire creativity and craftsmanship to create egg tempera paints that will be used within the book making process. This space will be a blank canvas for colour exploration.



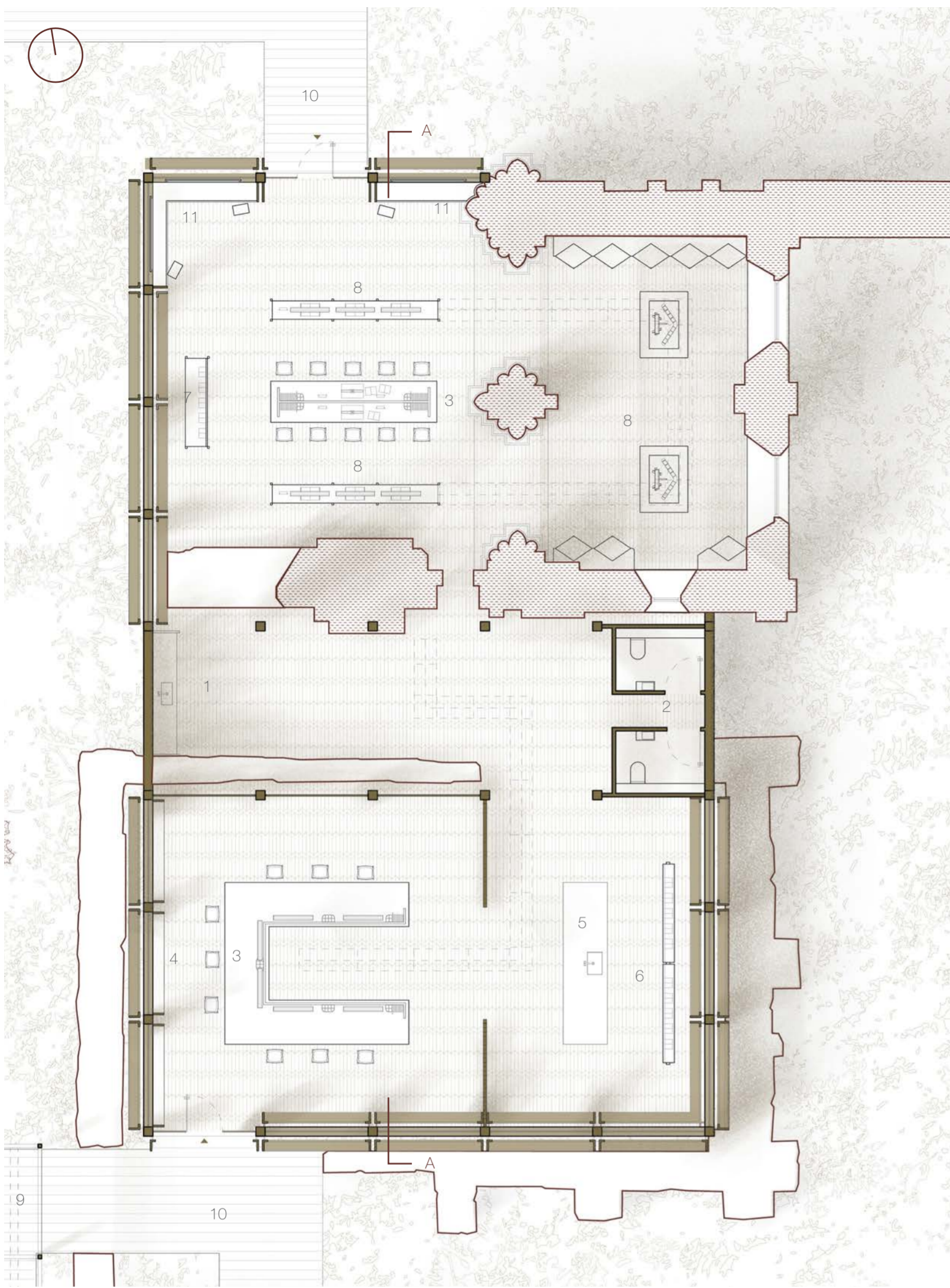
**2 Preservation**  
 The preservation ritual will consist of re-learning authentic communication skills through independent study and scribing as a form of written communication. This ritual is also to represent the ability to disconnect as well as connect in the other social rituals.



**3 Reflection**  
 The reflection space will consist of painting and illuminating the scripts in order to create visual communication. The product of these paintings will also be a visual communication of what is written within the books.



**4 Celebration**  
 The celebration space will consist of social connection. Binding the books together takes teamwork through multiple steps and will encourage visitors to engage with each other. This space represents the 'connect' principle.



Area of Focus

## Celebration Space

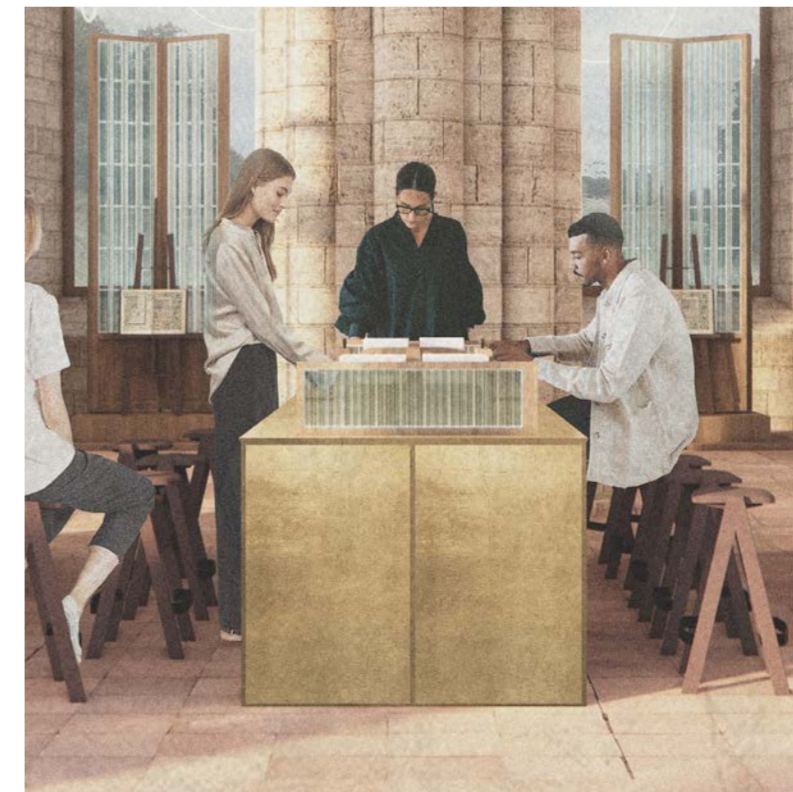
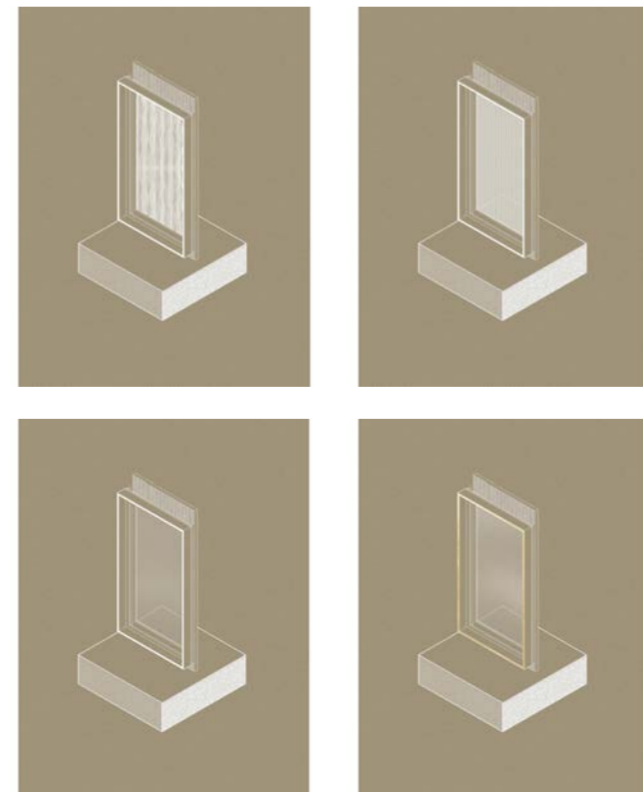
Scale 1:100

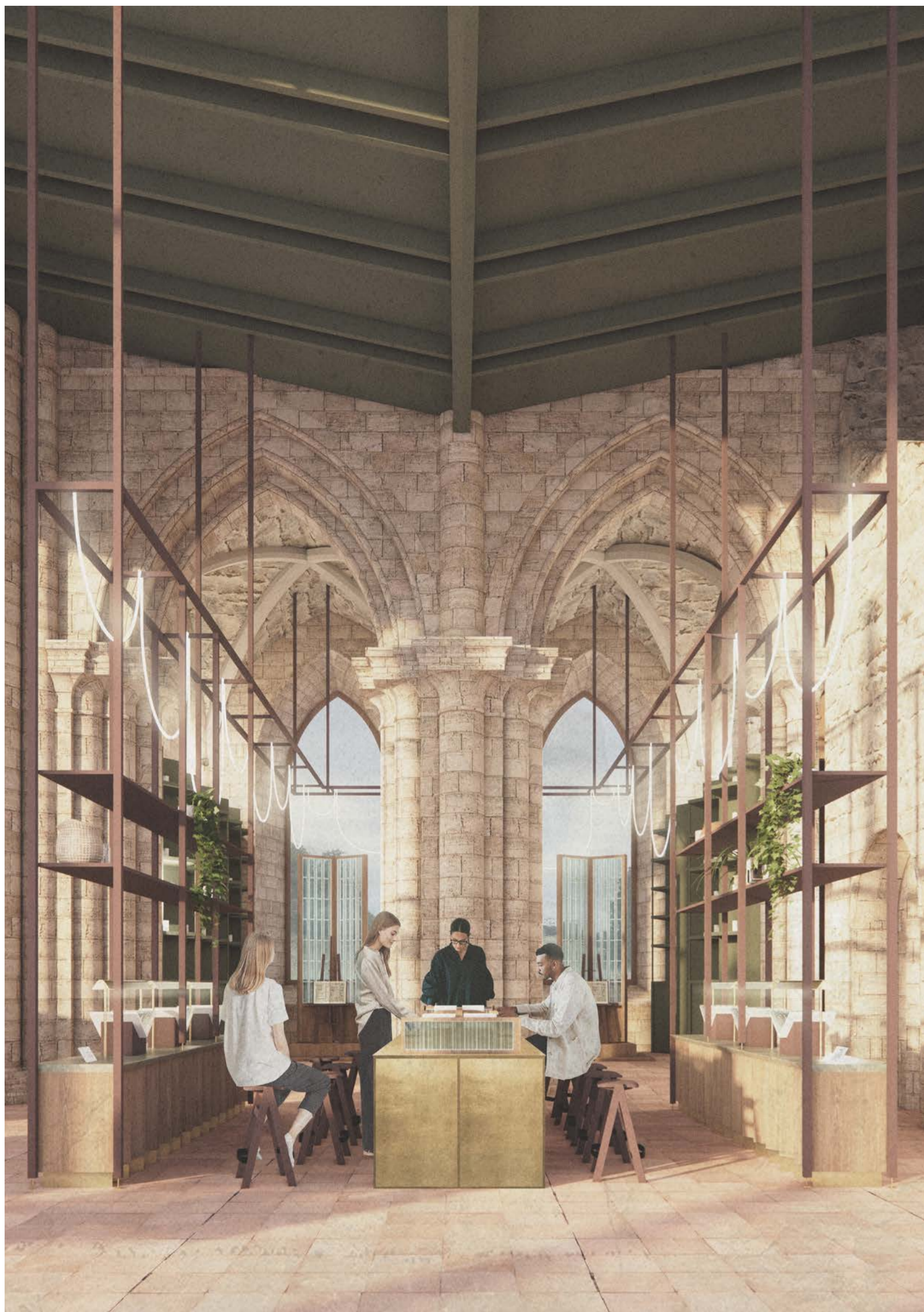
- Proposed Buildings
- Existing Building Above 1 Metre
- Existing Building Below 1 Metre

- 1 Kitchenette
- 2 W/C
- 3 Communal Desk
- 4 Storage
- 5 Cleaning Station
- 6 Drying Rack
- 7 Paper Storage
- 8 Book Display
- 9 Pergola
- 10 Site Walkway
- 11 Window Seating

### The Facade

Each building adopts a panel design language with the materiality of each panel representing the stages of authenticity learnt within. The final area of focus building also features a gold trim to represent the illumination of the books and the enlightenment of the visitors towards the final stage.





**(Left)**  
**Material Board**

**(Right)**  
**Furniture Isometric**

Fixed furniture isometric displays the application of the material palette.

This material palette is inspired by the retro rotary phone case colours and inspired by the book illumination. It features detailed floor tiles and gold fixed furniture units to represent the final stages of the Enlightenment.

**(Below)**  
**Section A**  
Not to Scale



**Spatial Purpose**

Within this space, visitors work together to bind the books and then display them within the archive for future visitors. The string lighting feature represents the counter-culture values however, also threads together the space in alignment with the activities taking place.

**The Design Language**

Throughout the final space this open book symbolism can be seen within the design details. It represents not only the book binding activity that is completed within the space but also the binding together of the visitors.