

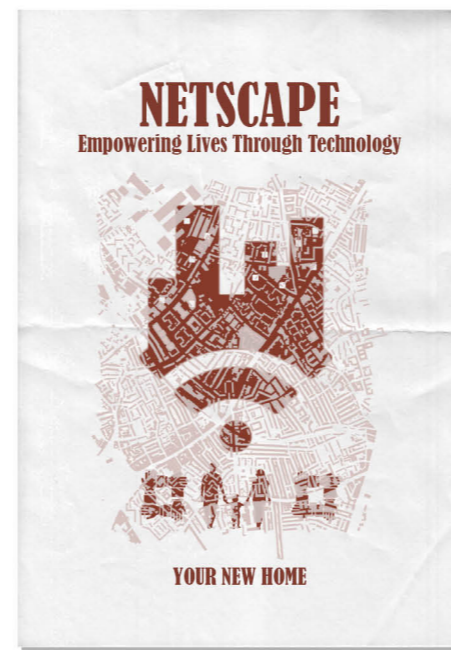
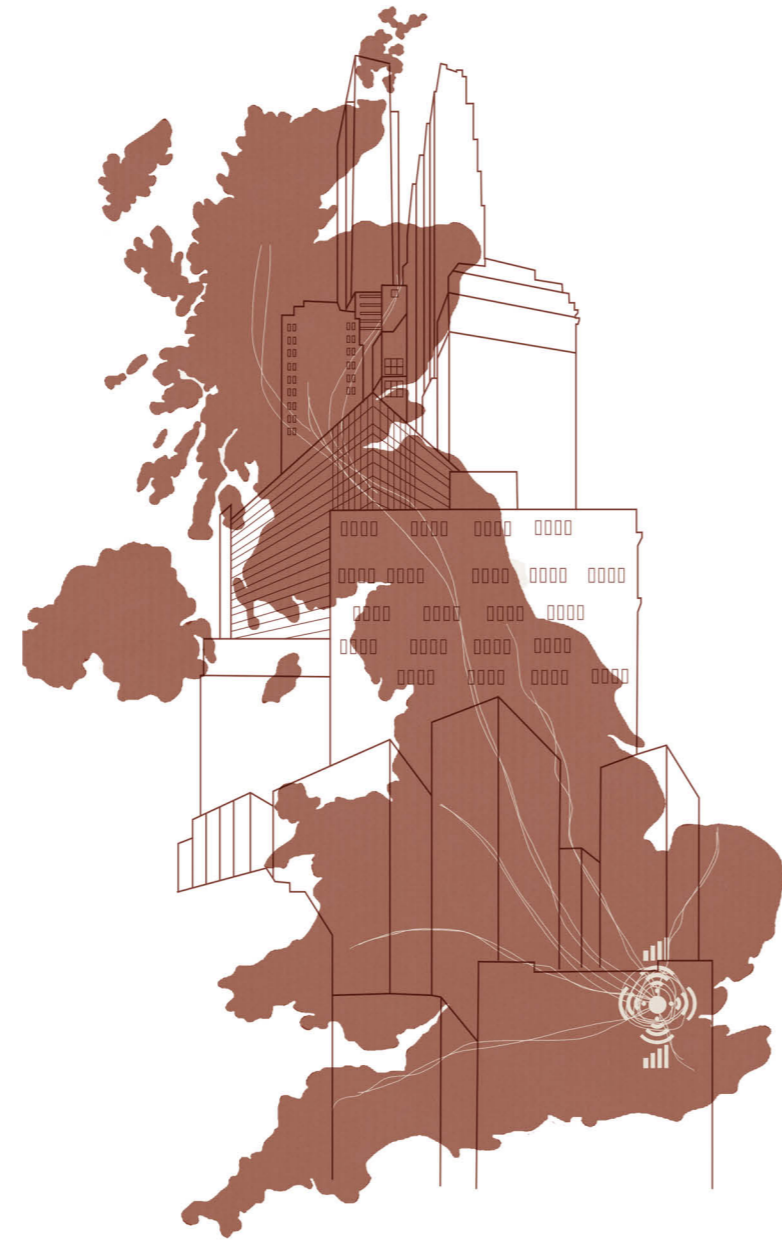
Seeking Solace

A space to encourage people to resist the technology consumed lifestyle where stress dissipates and serenity thrives.

In the innovation of a sacred space, the aim is to embrace the seasonal cycle to alleviate stress. Through the rhythm of seasonal light, lemon balm as a herbal remedy tea, is cultivated as the sacred ritual. The worship begins by sowing and pricking, honouring the plant's ability to reduce stress and connecting the visitor to the earth. Meditation intertwines with plant nurture, fostering mindful connection and personal reflection. The preservation space, celebrates the natural cycle and rhythm of the seasonal solstice and appreciates the benefits natural light exposure has on the mind. Through exploration, the hands on craft of lemon balm tea takes place, infusing the spiritual reflection of nurturing the plant with the healing essence it provides. In the embrace of seasons, the journey to solace, rejuvenation and harmony is found. A retreat where stress dissipates and serenity thrives.

2084 Speculation

In 2084, the population has migrated to the densely built up city of Netscape, due to technology advancement, attracting people to the more appealing fast pace technology consumed lifestyle. The demolition of surrounding buildings and landscape for resources to keep up with the demand of people migrating to Netscape has gone too far. Life within Netscape has become mundane and unfulfilling with no sense of seasonality, natural daylight, time and a disconnect to nature, causing the population to become increasingly stressed. After stumbling upon Roche Abbey, the charm of the site and revelation of the Zoetrope's rotational characteristic, reflecting the sun's natural orbit around earth, they yearn for the natural daylight, sense of time, seasonality and greenery to alleviate their stress. With this discovery, the Seeking Solace Retreat was founded, where the Lemon Balm plant is grown, dried and made into a herbal tea, encouraging people to re-connect to the earth's natural rhythm as well as one another while cultivating a remedy to alleviate their stress, while maximizing the site's natural charm, serenity and access to natural light.



Rural to Urban Migration in 2084

People are moving to Netscape due to the fast pace, high end and access to technology and signal. Individuals believe that this will mean a better quality of life, as they have become so heavily reliant on technology in 2084.

Building Deconstruction

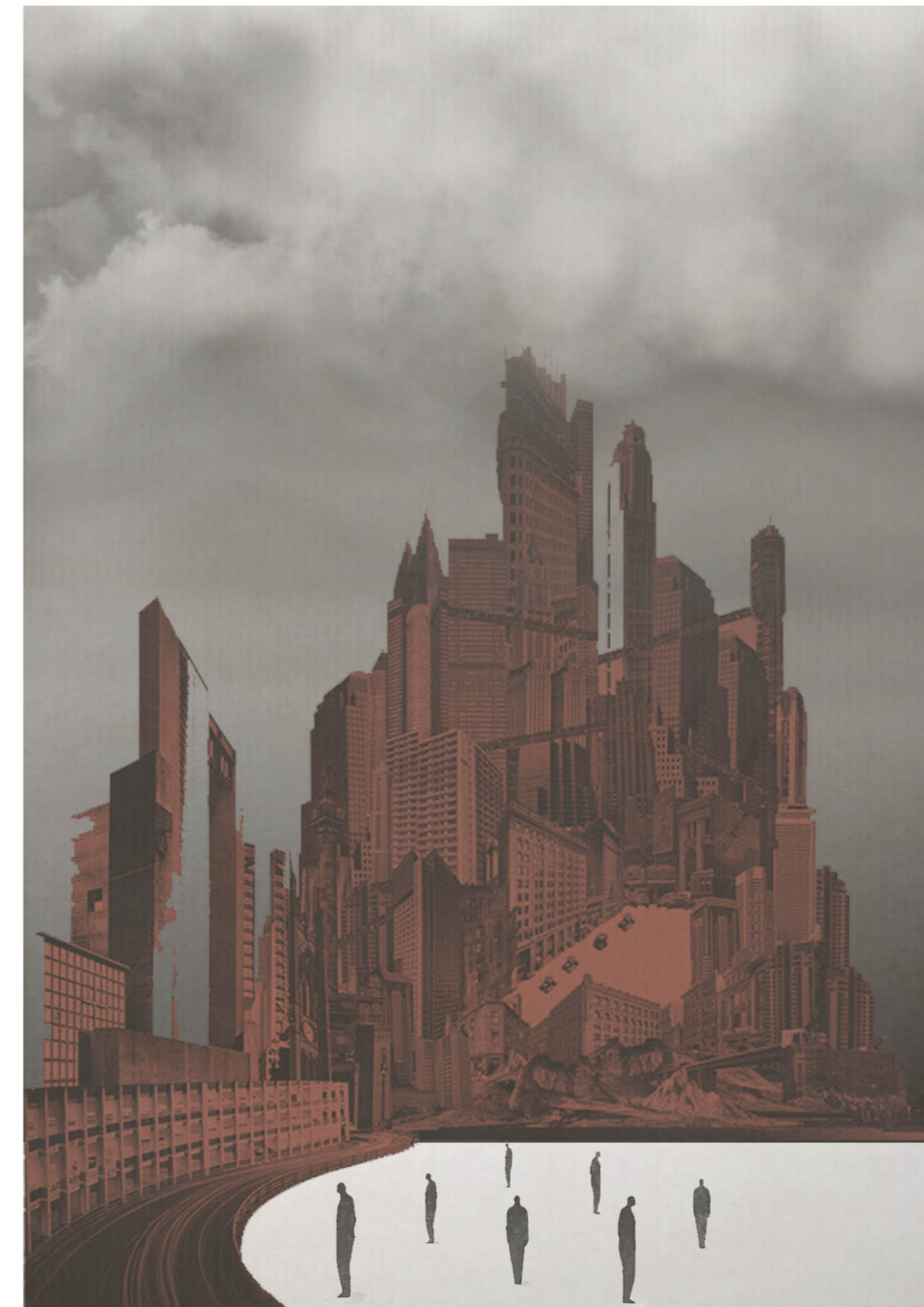
Pre 2084



2084 Landscape

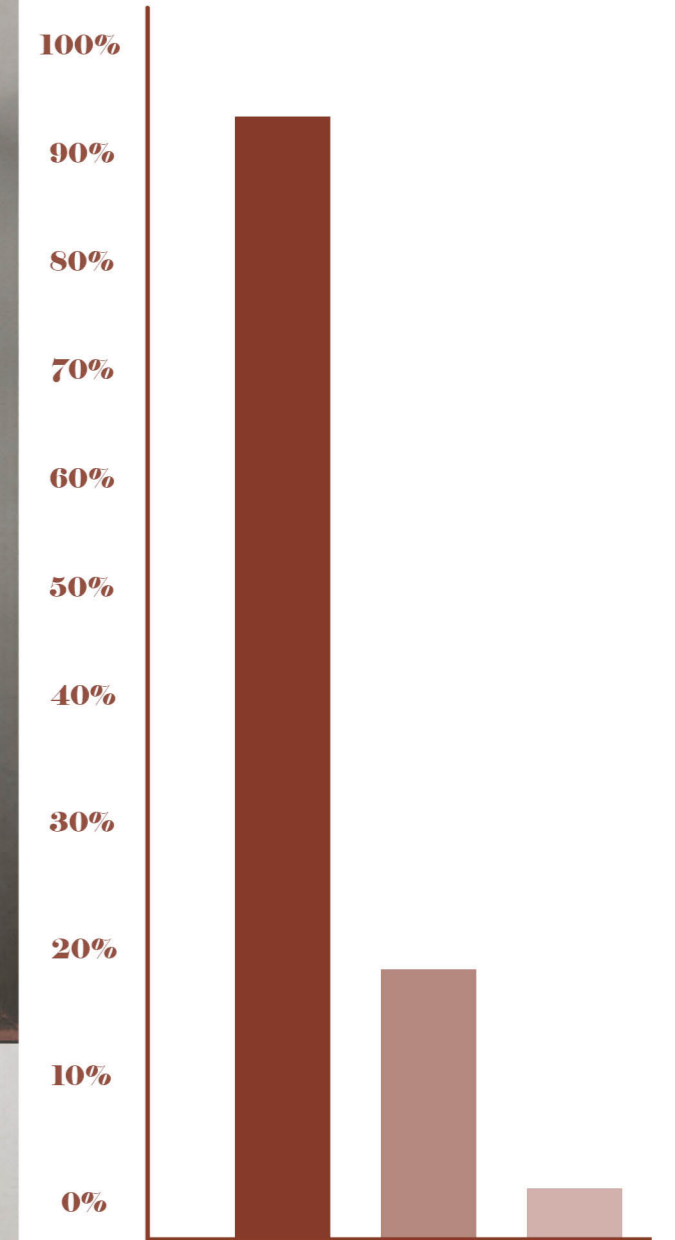


2084 Netscape



Netscape Data

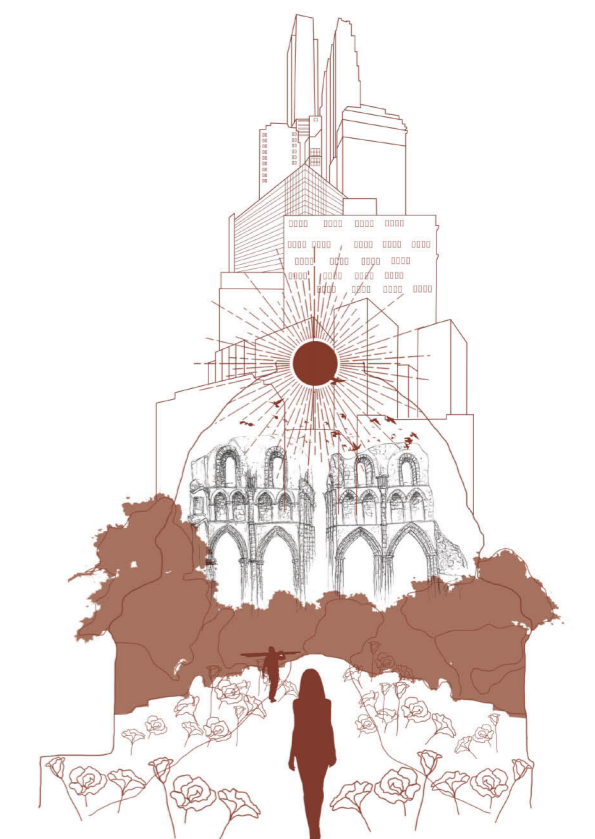
■ Screen time
■ Connectedness
■ Sun exposure



The Derive

Journey Leaving Netscape

The derive captures the journey taken by a group of collectors to survey Roche Abbey for resource collection. A wanderer from the Netscape population, tags along as she feels suffocated in the city.



The Rise Pre 2084...

Technology Advancements

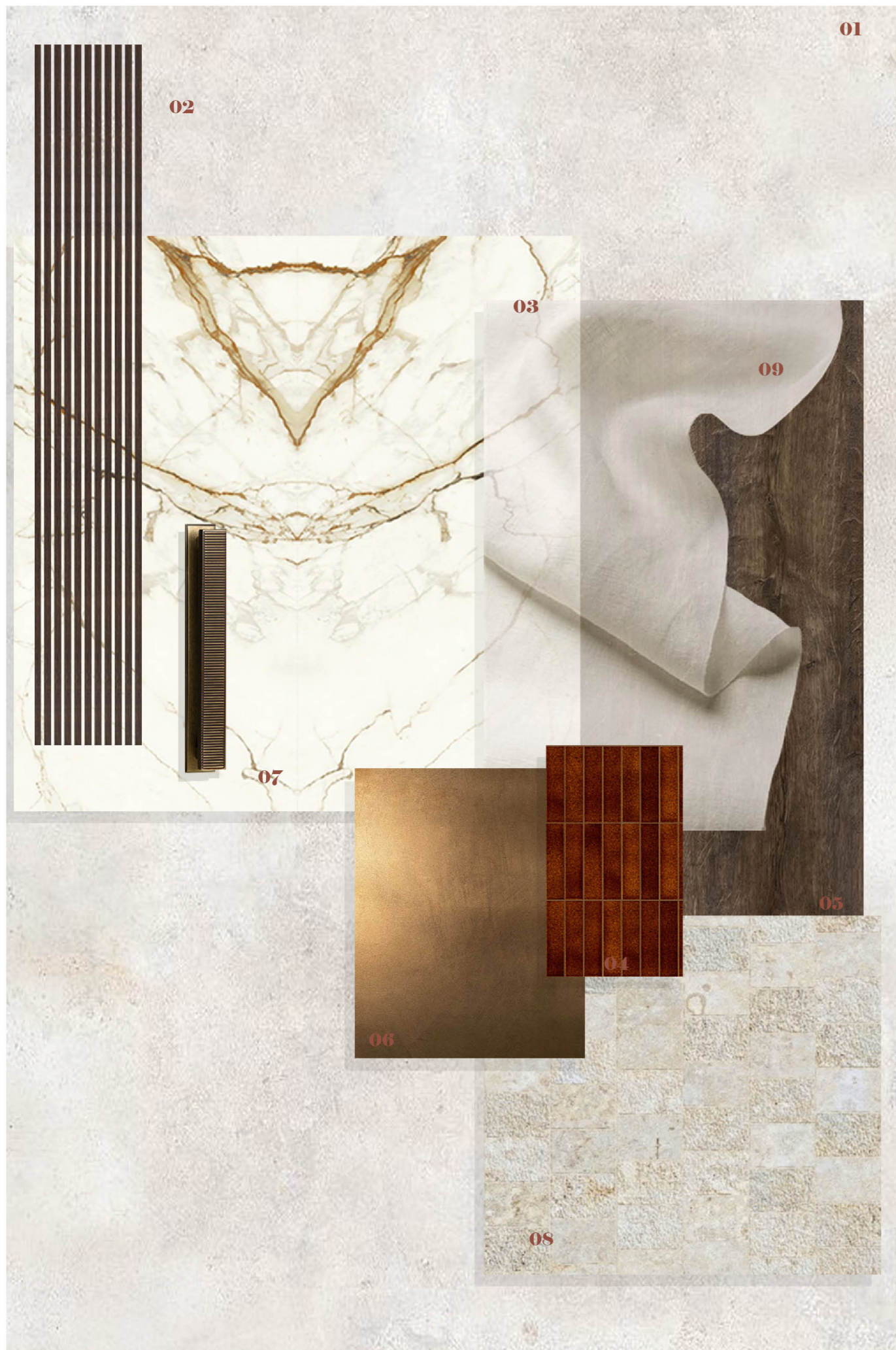
The consumer is controlled by imagery they are shown, and no longer entertain themselves without technology advancements. The constant need to give children screens to keep them entertained has stunted their ability to interpret imagery and express themselves creatively and collectively.

The Fall Now in 2084...

Loss of Connectedness to Nature

Relying so heavily on technology, the population have lost their ability to connect with the surroundings of nature and one another. This has started to create a feeling of loneliness and anxiety in humans.

Materiality



01

Key

01 Off White Limelite Plaster interal walls and some areas of flooring (tough, hard wearing finish, BBA Approved System, non-combustible to comply with BS476:4 & Certified under BES 6001 Responsible Sourcing)

02 Walnut Slats for false ceiling (bespoke sizing to fit project, (9m x 80mm x 30mm))

03 Caesarstone Calacatta Oro Quartz for splash back, worktops and fountain (made up of recycled material, EPD Certification, Greenguard Envirometnal Insitute certified) bookmatched to reflect symmetry of relic.

04 Hoxton Burnt Orange Gloss Procelain Tiles for flooring and splashbacks (produced with recycled and recyclable materials with low enviromental impact in its life cycle & reduces heating and cooling peaks in every season, moderating room temperature, saving energy)

05 Rustic Walnut with Oil Stain for cabinets, ceiling beams and shelving (hard wearing and eco friendly, wood collected from plantations where new tree is replenished regularly, stain to avoid bleaching in direct sunlight applied using The Real Milk Paint Hemp Oil leaving nutty aroma)


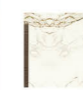
06 Satin Brass for details in scheme (LRV of 59 meaning it can bounce back more light than absorb, creating a expansive daytime feel to the space)

07 Hendel and Hendel Barrington Pull Handle for cabinets in bronze finish (180 x 20 x 9mm)

08 Re Used Limestone Flooring taken from areas of the site which have been removed, to be re used within the proposal.

09 Linen Roof Curtains naturally biodegradable

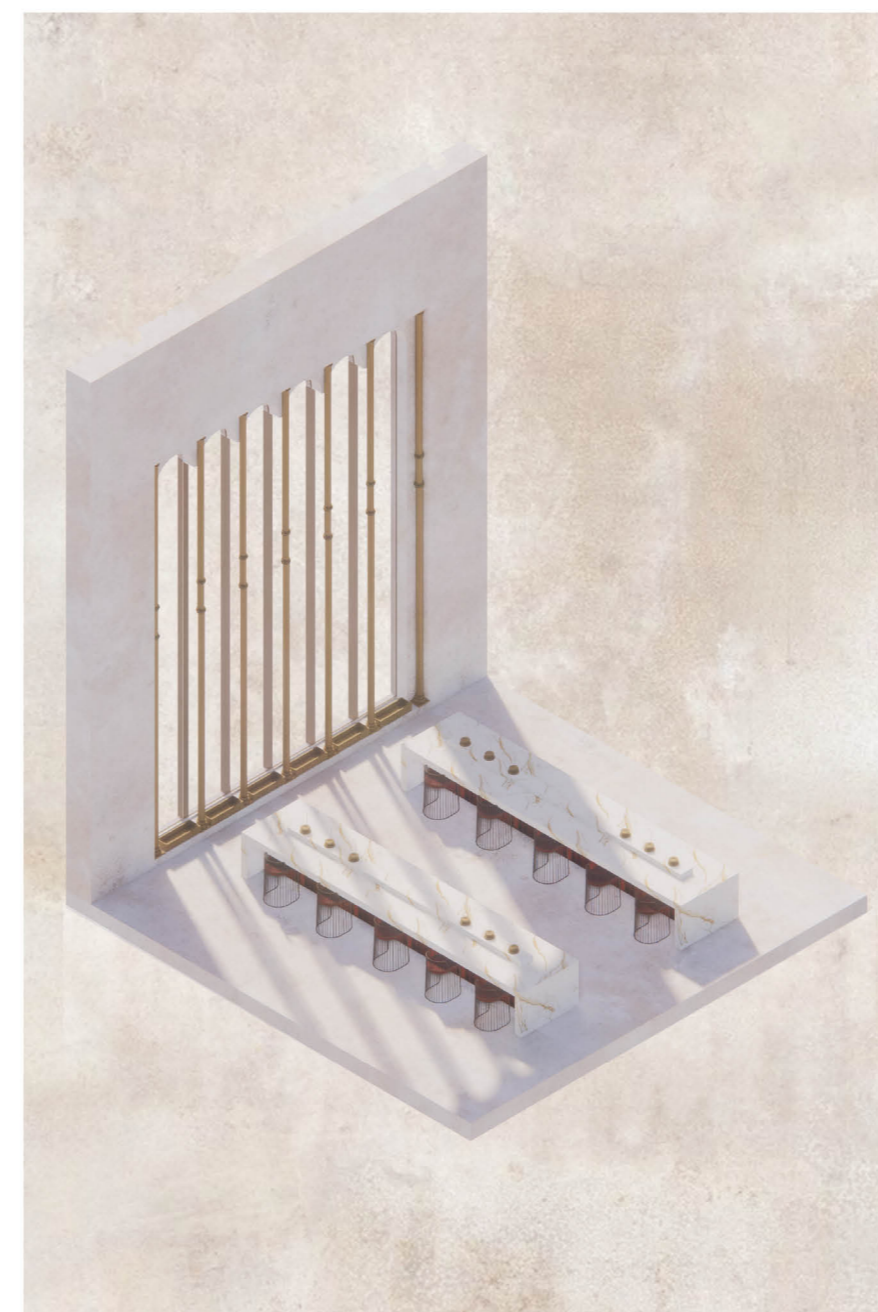
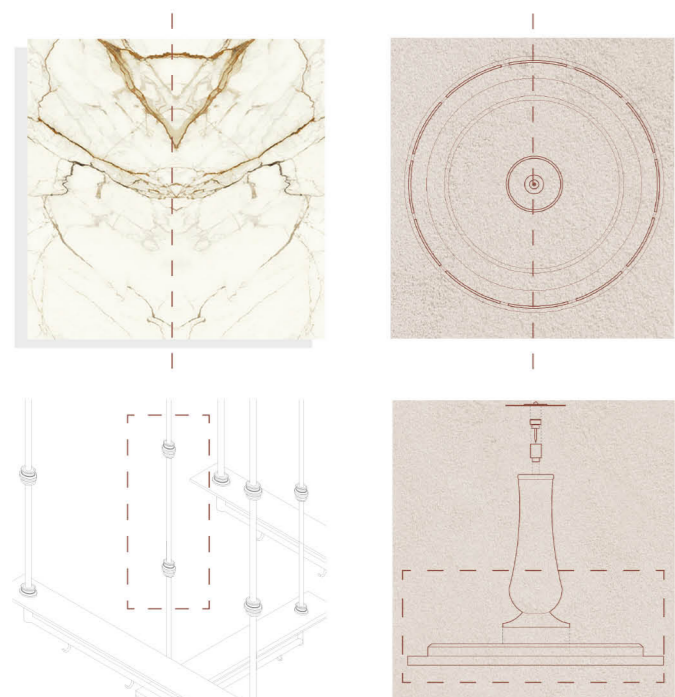
End of Life Building Interior Materials

-  75-100 years life expectancy.
-  Natural stone marble over 100 years life expectancy.
-  Re used limestone flooring, can be crushed into aggregates for concrete.

The Zoetrope's Influence

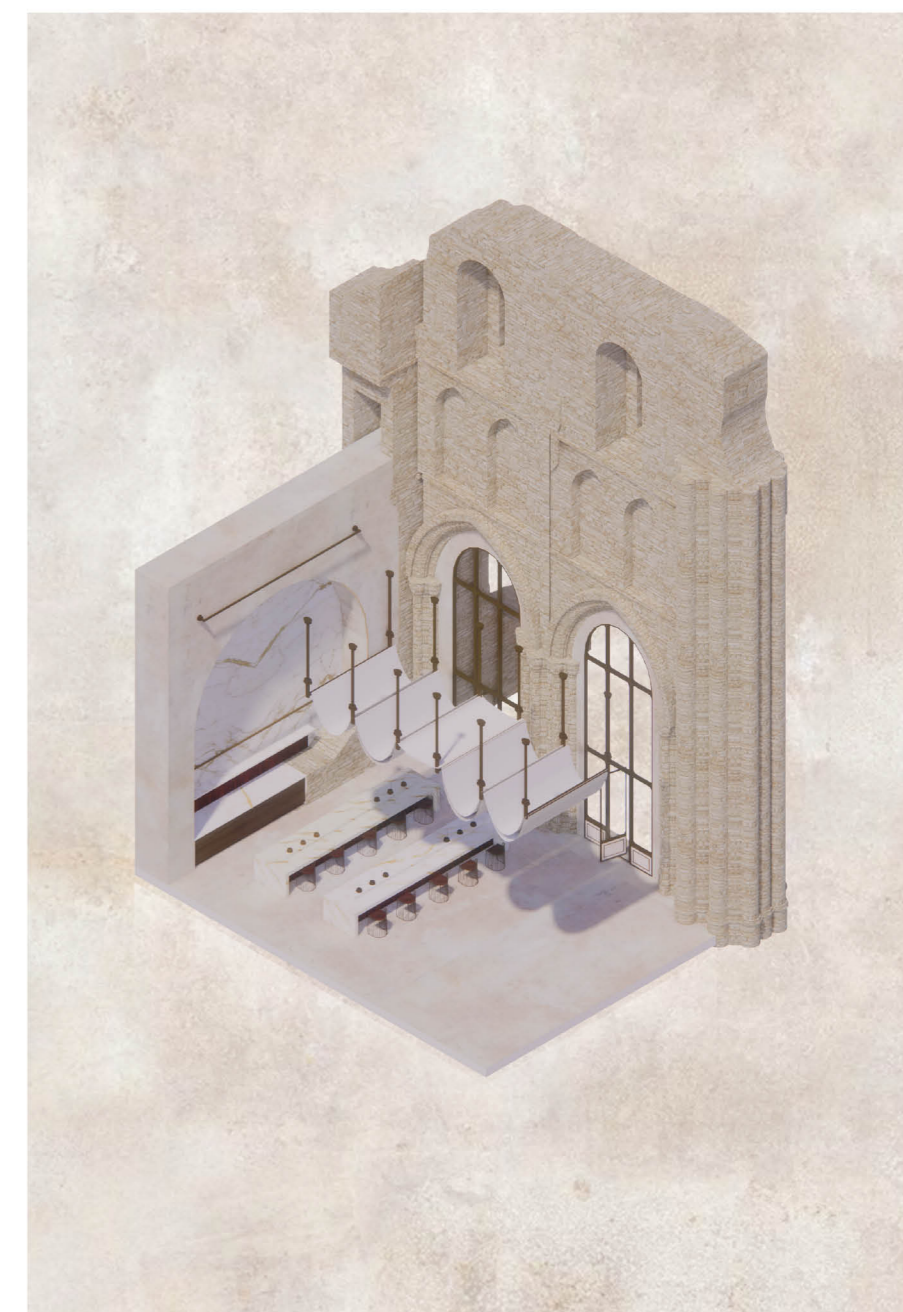
Walnut & Brass are the constituent materials of the relic, inspiring the dark, neutral and luxury feel materials. The bookmatched symmetrical marble reflects the symmetrical nature of the zoetrope, as well as catching the visitors eye, drawing them into the space first, ready to start the process of sowing and germinating the seeds.

The brass accents on the support beams reflect the stand of the Zoetrope, which supports the drum. The beams supports the hanging shelves. The accents are a design language found throughout the whole scheme, especially the area of focus, the collective Celebration space.



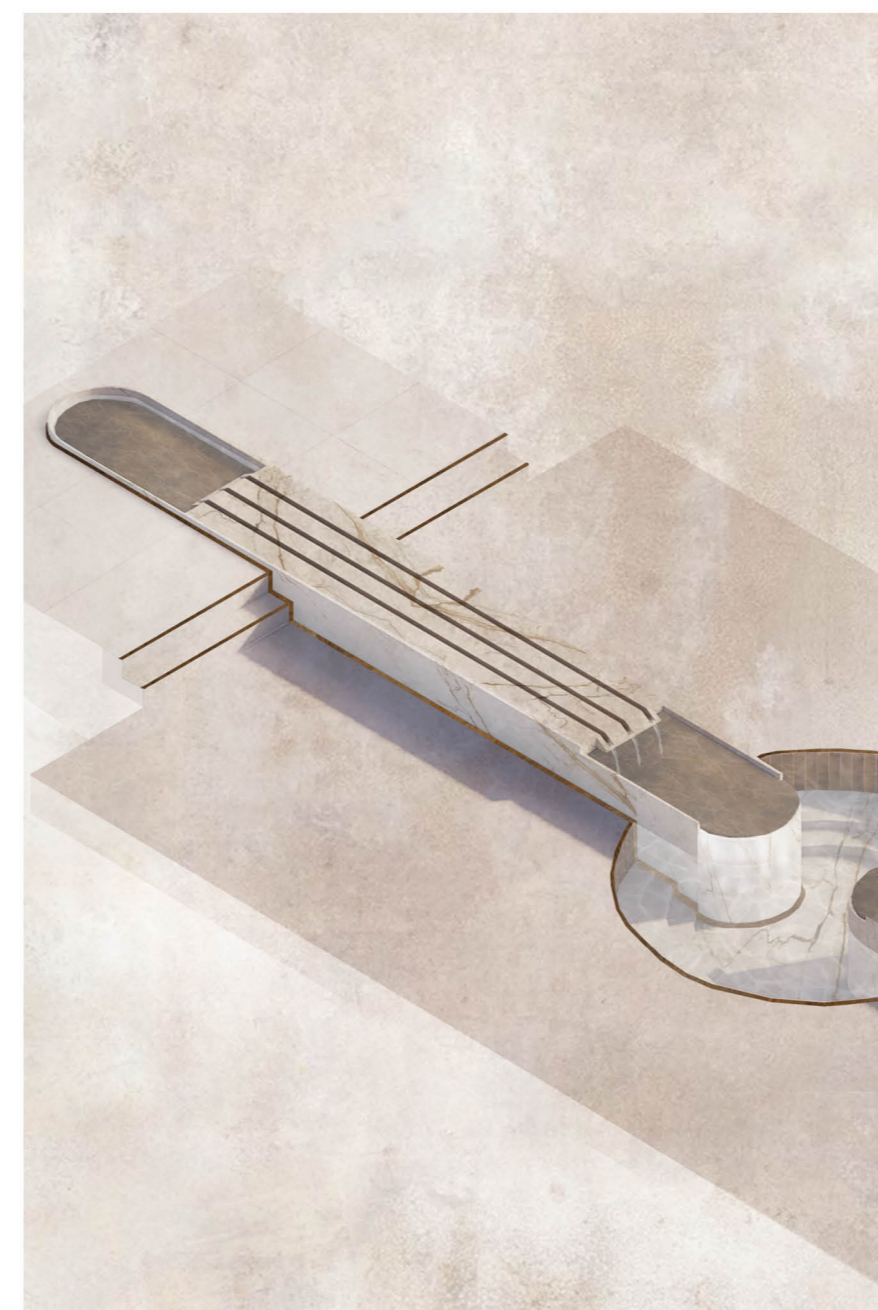
Isometric of New Windows

The window is designed to reflect the slits of the zoetrope. With 6 openings, signifying the 3,6,12 language of the relic and how it works in 12 intervals.



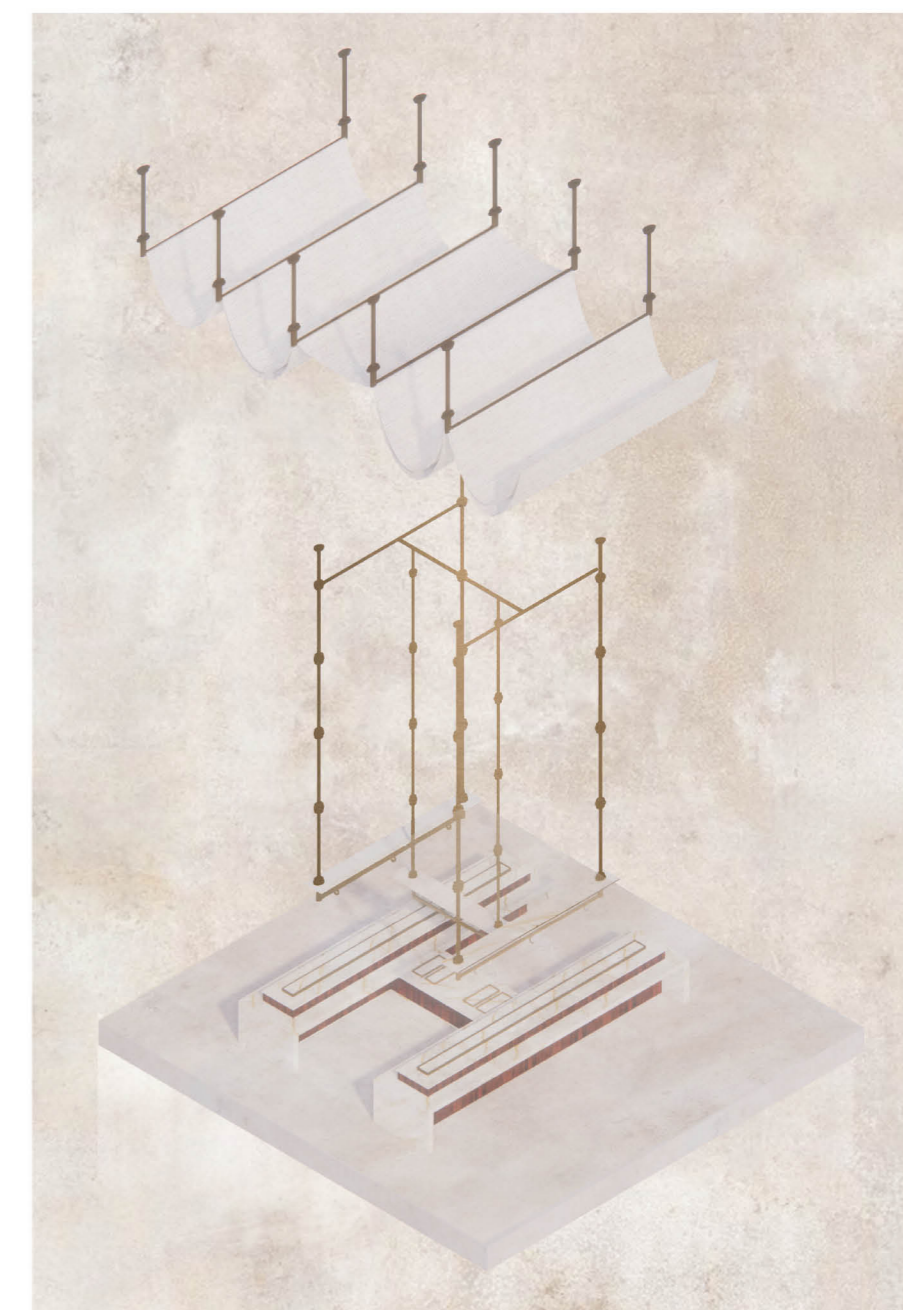
Isometric of Old & New Blend

The blend of old and new within the design is vital in preserving the layered history the Abbey holds, especially in the transepts which are the most intact part of the site.



Isometric of Fountain

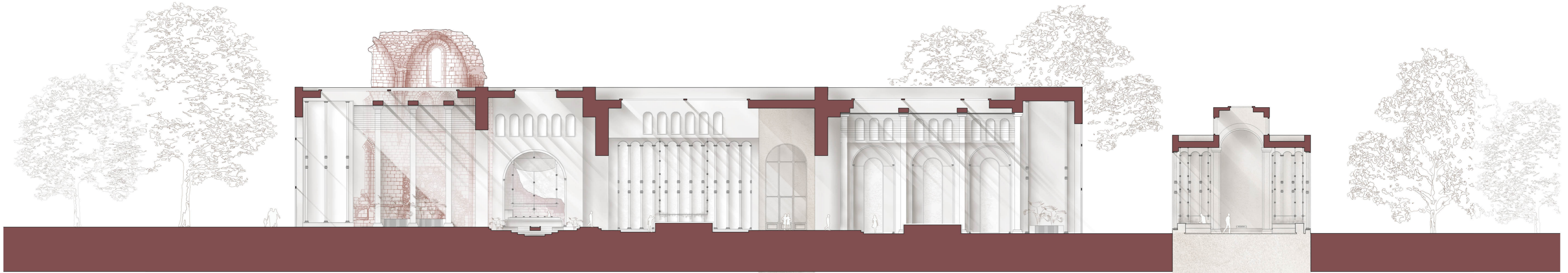
Linking the sowing to the germinating space, the fountain is built into the steps to reach each side, with the water pond central to generate a peaceful and calming ambience



Isometric of Brass Support Beams

The sun when it hits the brass poles against the new plaster and old brick will display the detail of the zoetrope influence.

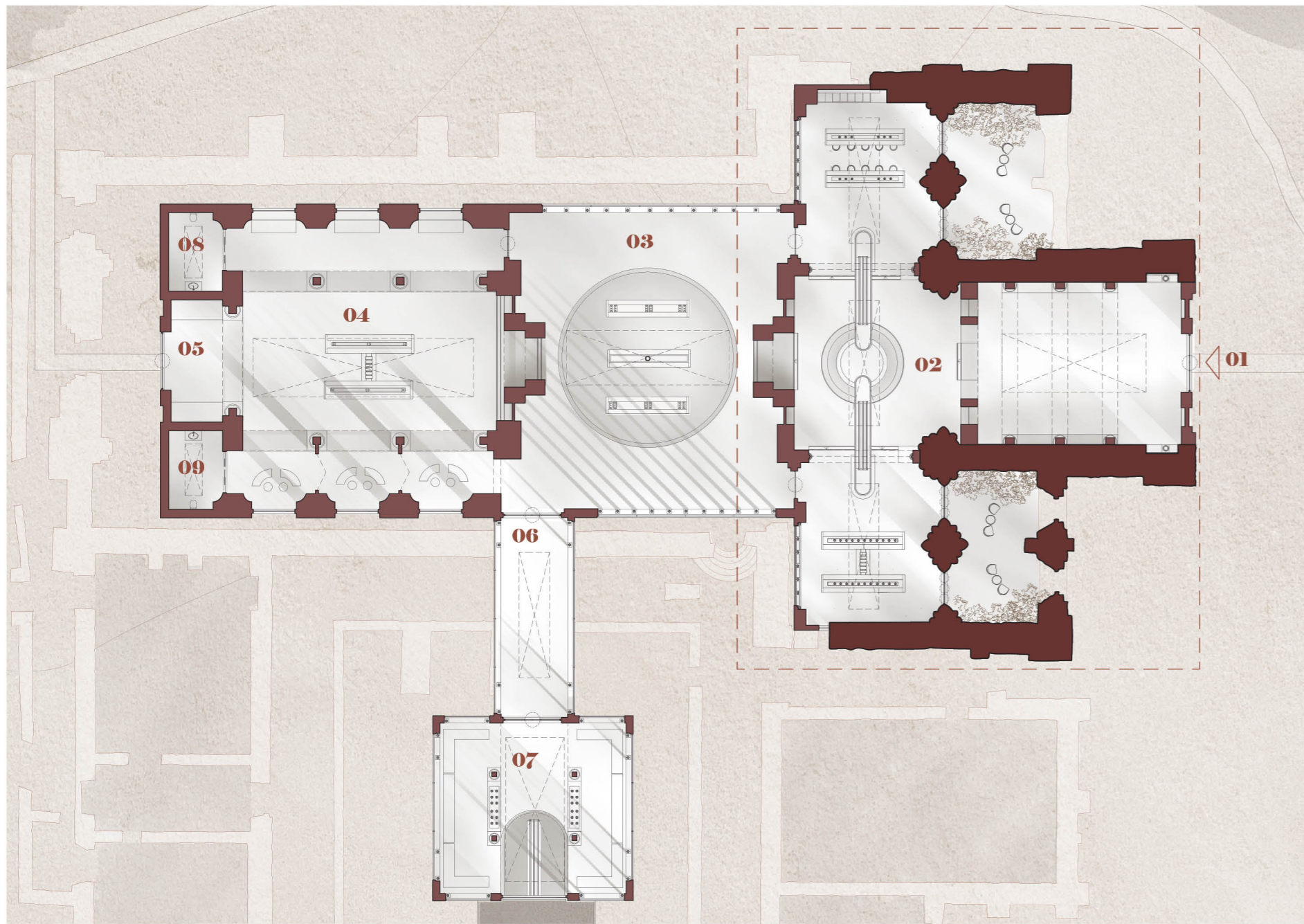
Design Proposal



Experiential Section

The Experiential Section shows the concept of light and volume in the Zoetrope formation created within the window nuances. It also shows the meditation space as its own space.

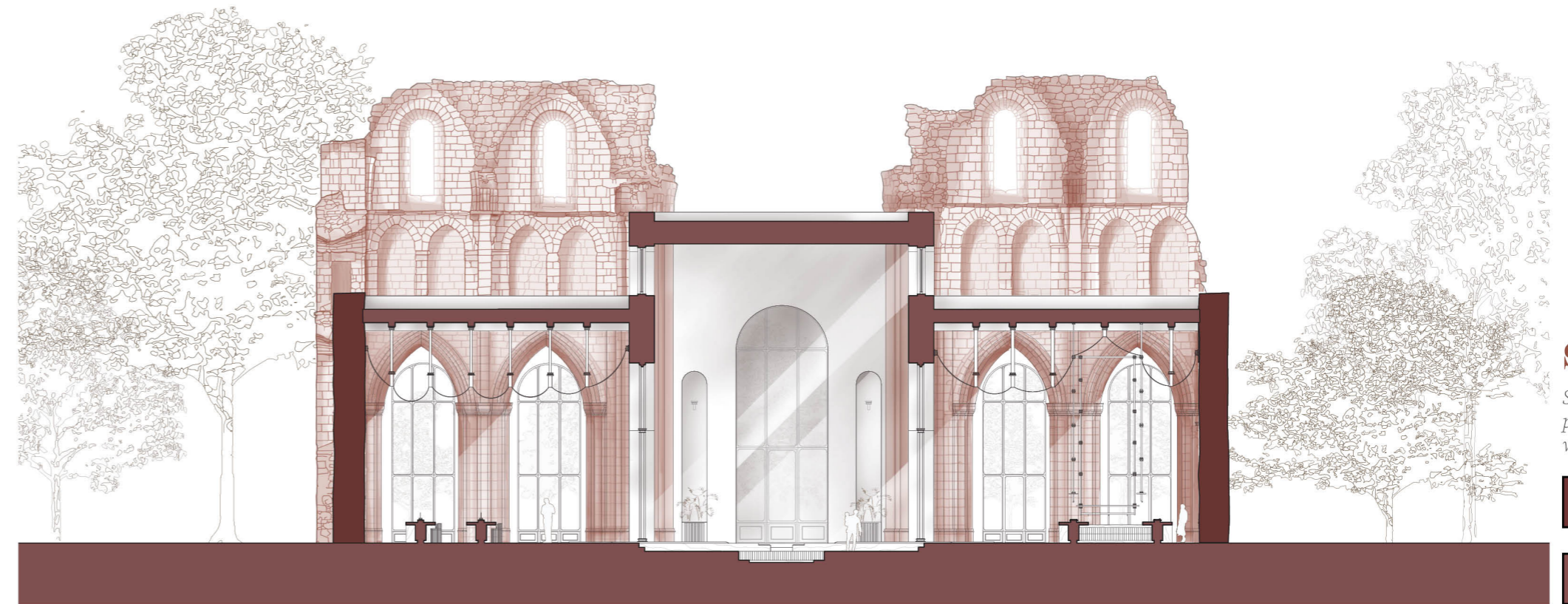
- New Cut Through
- Connection to Meditation Space



Master Plan

- Area of Focus Call Out
- Existing Cut Through
- Existing
- New Cut Through

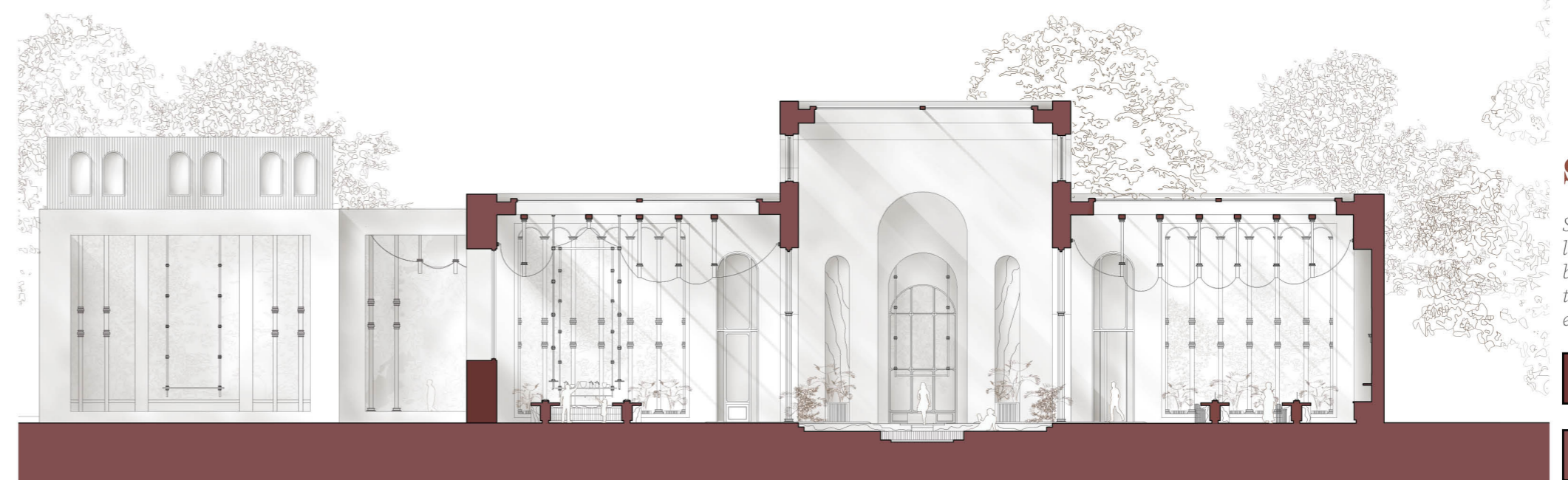
- Key**
- | | |
|--|-----------------------------|
| 01 Entrance to Seeking Solace Retreat | 07 Meditation Space |
| 02 Collective Celebration Space | <i>The Botanical Garden</i> |
| <i>The Lemon Balm Greenhouse</i> | 08 WC male |
| 03 Tomb | 09 WC female |
| <i>The Light Tomb</i> | |
| 04 Exploration Space | |
| <i>The Lemon Balm Tea Room</i> | |
| 05 Exit | |
| 06 Walkway | |



Section AA

Section AA aims to show the preservation of the abbey within the new.

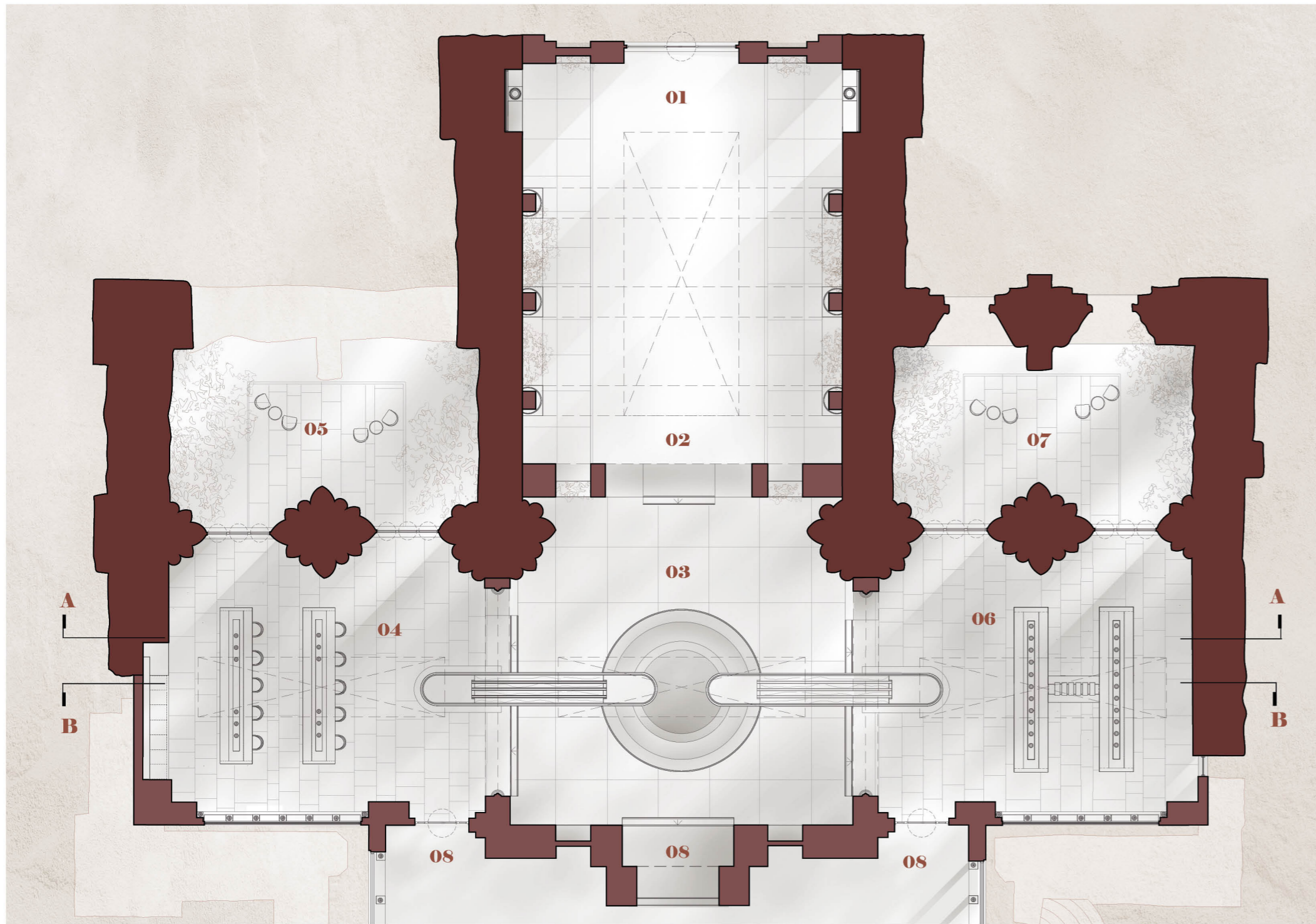
- Existing Cut Through
- New Cut Through



Section BB

Section BB aims to show the light through the skylight beams and the connection to the meditation space in elevation.

- Existing Cut Through
- New Cut Through



Collective Celebration

Area of Focus Plan
Scale 1:100
New and Existing Cut through similar colouring to emphasise the aim to blend the old and new

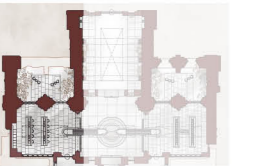
- Key**
- 01 Entrance to Seeking Solace Retreat
 - 02 Extended Walkway
 - 03 Fountain
 - 04 Sowing Area (Visual taken from)
 - 05 Outdoor Breathing Space
 - 06 Germinating Area (Visual taken from)
 - 07 Outdoor Breathing Space
 - 08 Exit to Tomb

- Existing Cut Through
- Existing
- New Cut Through



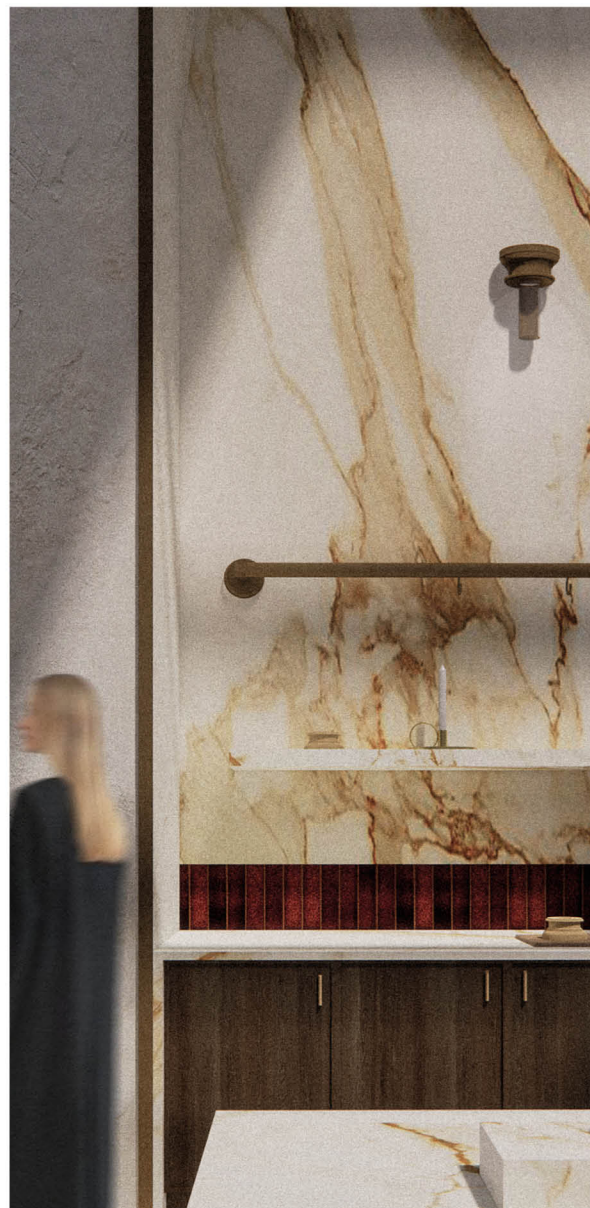
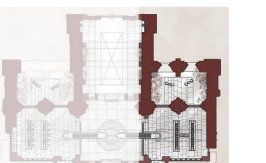
Sowing Area

Visual showing the bookmatched marble feature within the arch where the old meets the new.

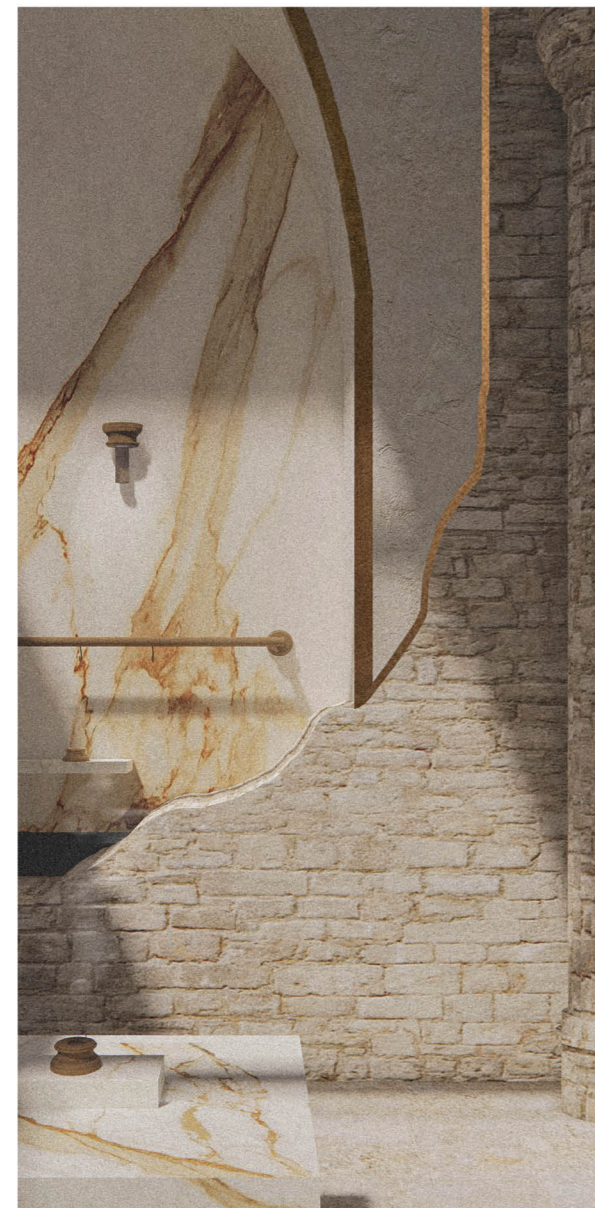


Germinating Area

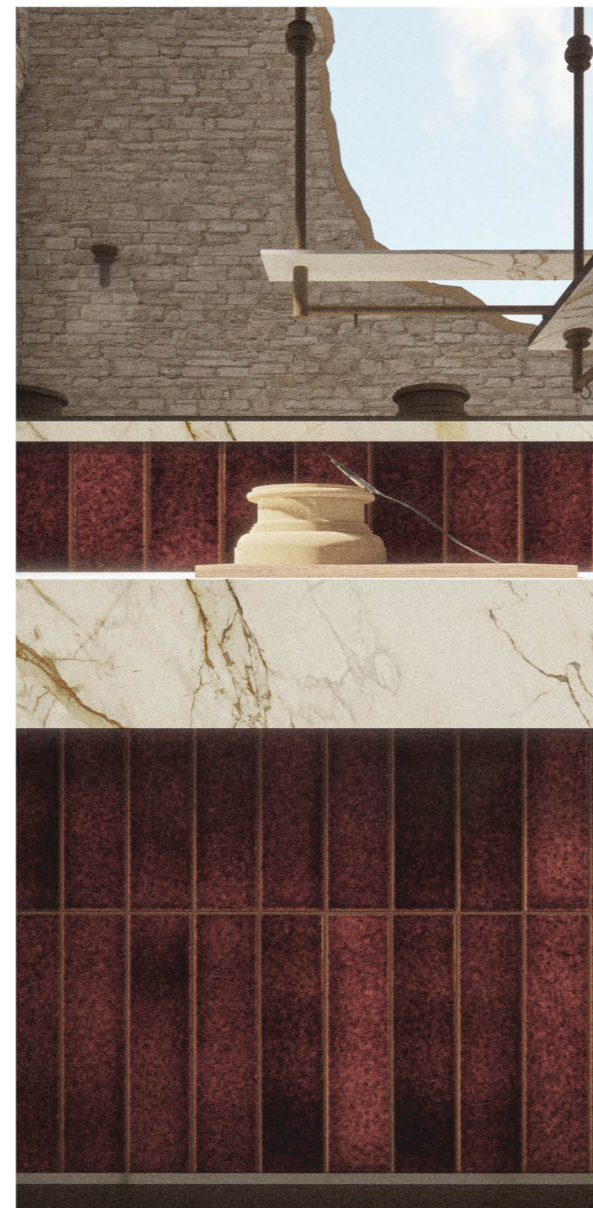
Visual showing how to space encourages visitors to communicate and work together, and the rotating door connection to the garden.



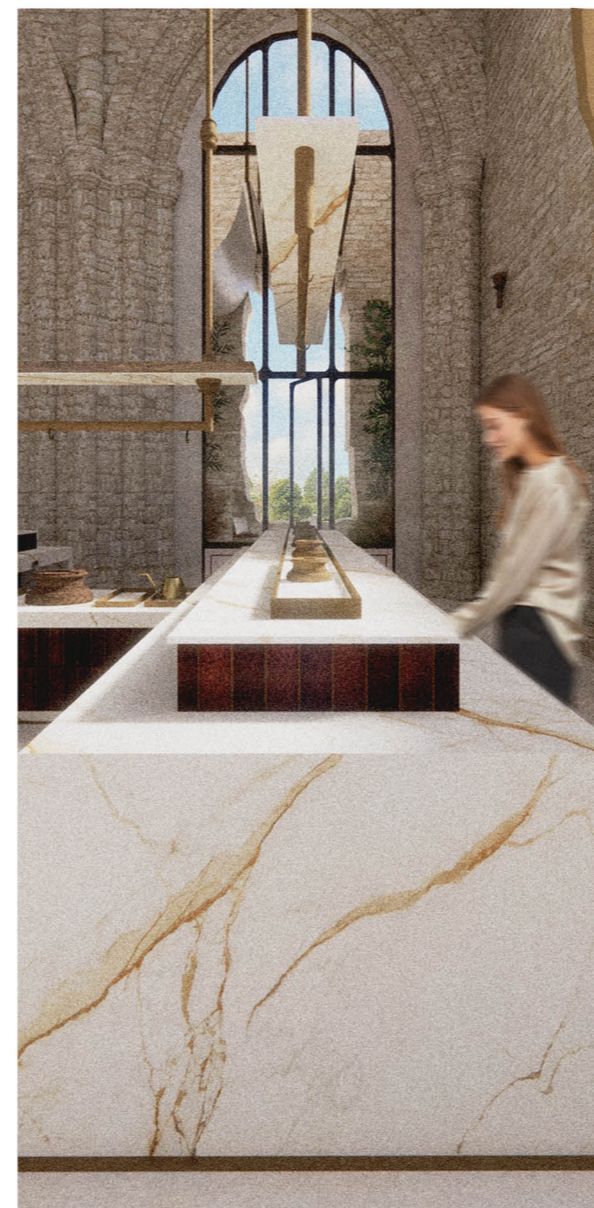
Detail Visual showing The Real Milk Paint Hemp Oil on walnut and brass materiality reflecting the Zoetrope's influence.



Detail Visual showing the new meeting the old with incense lit to create a calming environment for the visitor.



Detail Visual showing the ritual of placing the spoon on the germinating ready to carefully drip water into the pot of seeds.



Detail Visual showing the marble effect taking the eye to the view of the garden and the outside views.